



GV STRATUS Editing Workflows with Avid Nonlinear Editors

Bea Alonso, Director, GV STRATUS Business Development, Grass Valley, a Belden Brand
March 2016



The open GV STRATUS platform integrates with all the the leading nonlinear editors, including Avid NLEs. Two different workflows are possible for integration with Avid NLEs:

- Transferring media files up front, providing full access to the GV STRATUS non-linear workflow production tools
- Quickly linking to video files via AMA and editing-in-place

With either choice of streamlined GV STRATUS/Avid workflows, editors have a range of tools at their fingertips that facilitate the creative process and allow them to reduce time-to-air.

Introduction

As part of its ongoing commitment to open standards architecture, GV STRATUS facilitates integration with Avid nonlinear editors into unified production and asset management workflows. Avid editors, such as Media Composer, NewsCutter and Symphony, working in a stand-alone or Avid ISIS/Interplay configuration can edit-in-place on K2 Summit or K2 SAN systems via Avid AMA, or work in transfer mode.

As the names imply, the modes differ in how Avid editors access K2/GV STRATUS media for the editing process and each mode has its advantages and applications in production workflows. Upon the completion of editing, both transfer modes employ a publishing process to

push media from the Avid environment back to the K2/GV STRATUS system. With the edit-in-place mode, all media is accessed directly on K2 storage.

GV STRATUS natively transfers clips and sub-clips between K2 storage and Avid editors and ISIS/Interplay, as well as pushes final edits back from Avid to the GV STRATUS/K2 system.

The workflow supports Avid editors either working standalone on local storage, or as part of an ISIS workgroup. Users can therefore send content from GV STRATUS/K2 directly to an ISIS workspace with or without Interplay PAM.

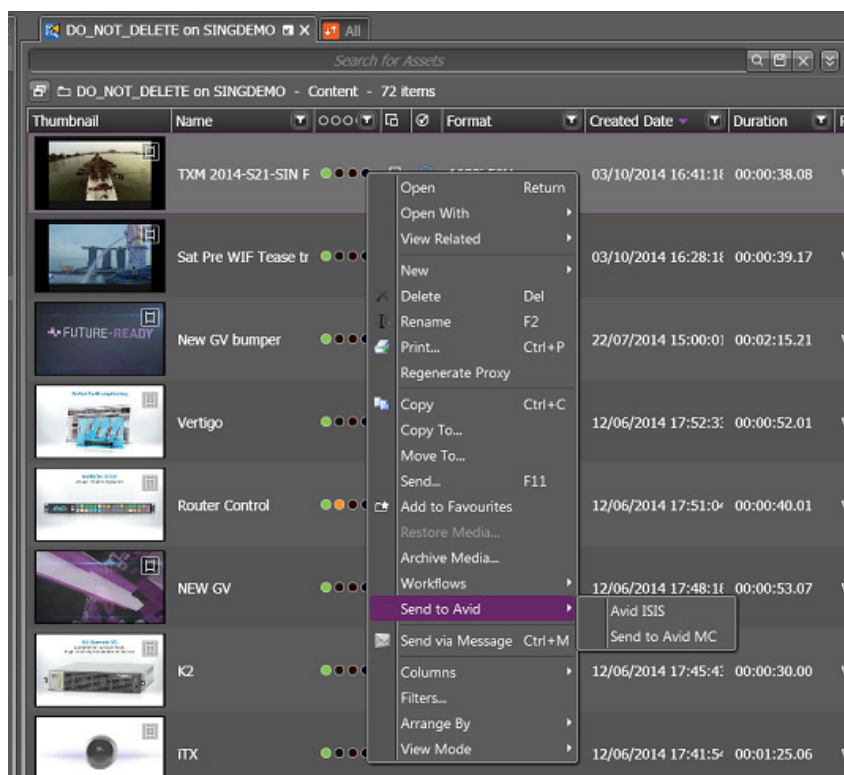
Transfer Workflow: Using GV STRATUS to Send Content to Avid

GV STRATUS offers the most powerful level of integration between Avid and K2 systems. GV STRATUS is a nonlinear media production framework including tools for ingest, browsing, logging, editing and managing media.

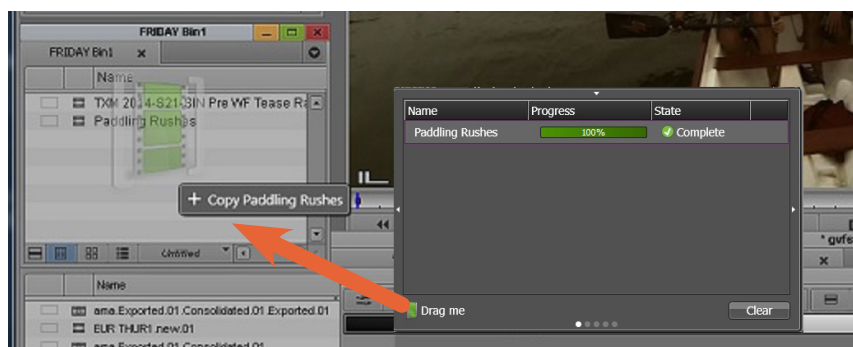
With GV STRATUS, the user can navigate to K2 folders and sub-folders, but additionally they can use the powerful and intuitive search

engine to locate and preview assets. Searches can be basic using filename, markers and keywords, or advanced on multiple specific conditions.

Once the required master clips are selected, the user can send them to their Avid editor, either to the local storage or to an ISIS workspace, with a simple right-click and send operation.



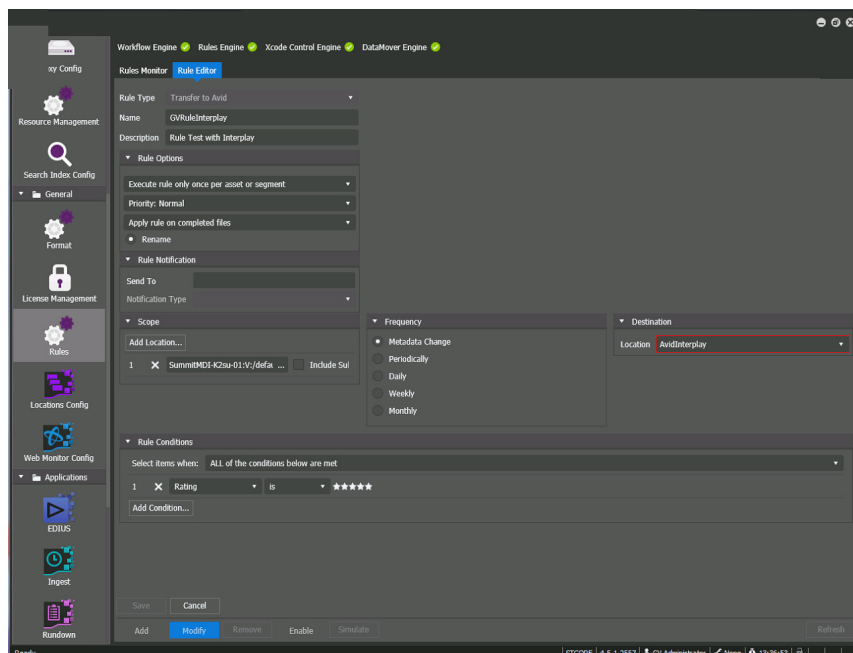
Multiple destinations can be set up to send files to the specific Avid editing workstation that needs the material (check the latest **GV STRATUS Online Topic Library** for configuration details). Both clips and sub-clips can be sent without the need to conform. This allows users to pre-select a portion of their master clips and send only that segment to Avid, considerably reducing the time and storage required for the transfer. Multiple files can be sent in a single “send” request, and monitored using the Avid jobs monitor within GV STRATUS.



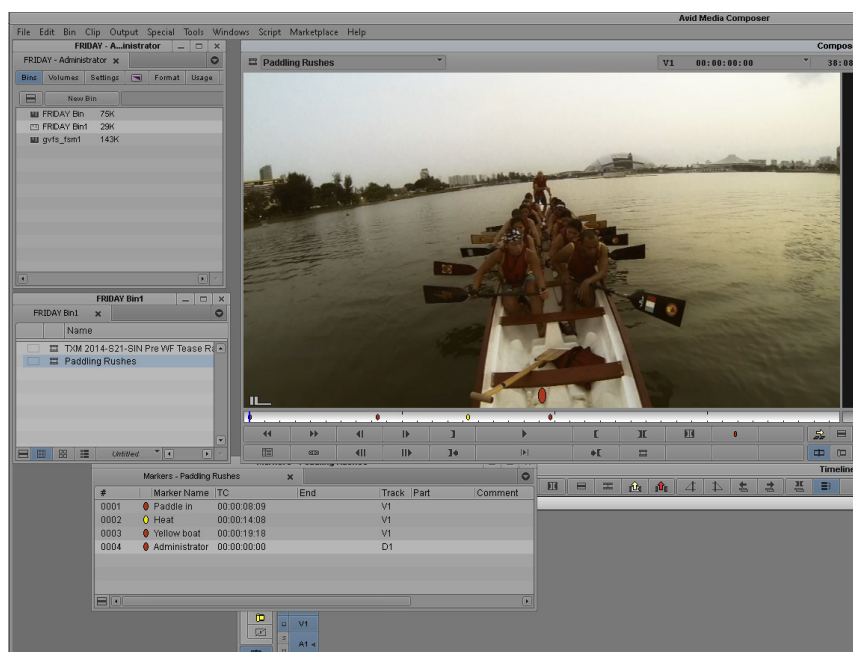
It is possible to open the file and edit within the Avid environment while it is still transferring. Simply drag and drop from the GV STRATUS Avid monitor to the Avid bin.

When working in an Interplay environment, the user can search for the transferred media on Interplay, and then work as usual within their Avid editing tools.

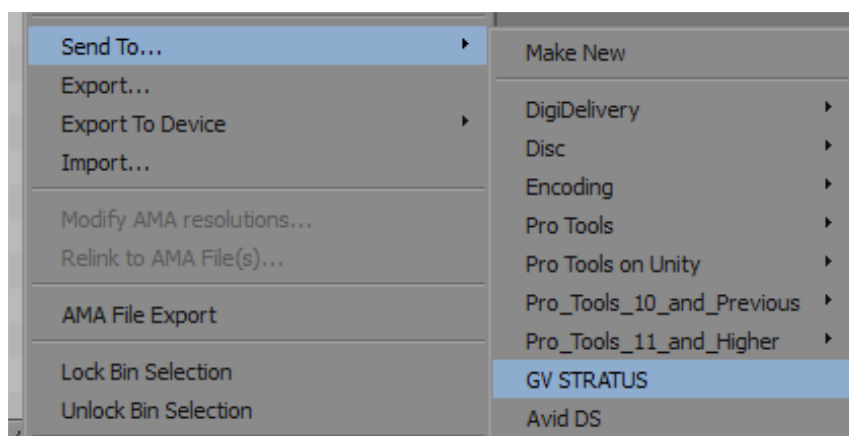
From GV STRATUS 4.5 it is possible to automate the process of sending K2 content to Avid ISIS/ Interplay using workflow rules. Based on specific criteria (for example a check box, a comment or a bin) set up by a system administrator, media will be transferred automatically to a preset ISIS workspace and metadata will be checked-in to a given Interplay folder. This allows producers or media managers to automate the process of exchanging content between both systems.



The GV STRATUS clips/sub-clips will be added to the selected bin on the Avid editor and can be viewed and edited. All GV STRATUS metadata, including markers and keywords, are passed on to the Avid environment, so that the video editor can use this information to edit more efficiently. It is possible to configure exactly which metadata fields are passed on to Avid. If a field does not exist in the Avid environment, it will be automatically created upon the transfer.



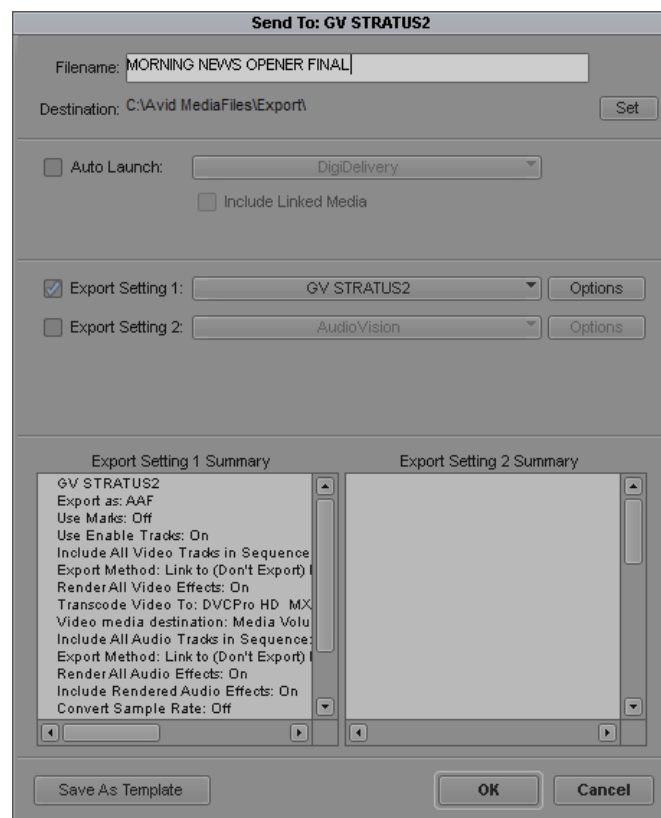
When the required source video files are loaded to the Avid bin, editing can be done as per the usual method. Once the edit is completed, the user simply right-clicks on the sequence in the Avid bin and selects “Send To.”



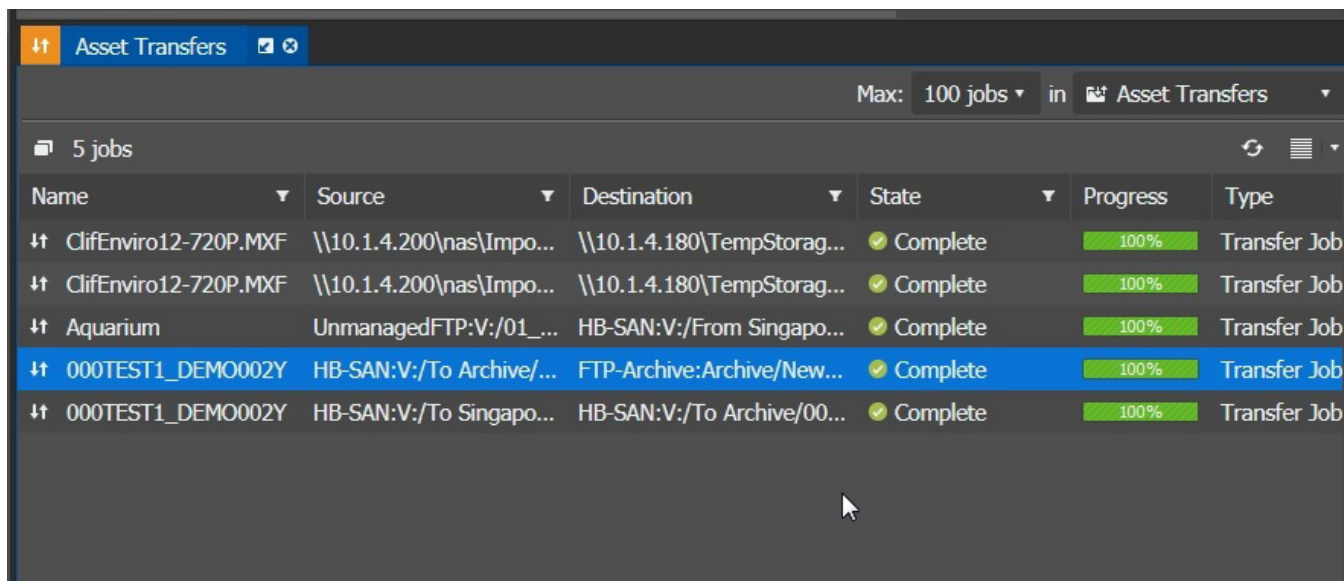
A “Send To” destination within the Avid editor needs to be created beforehand by a Super User (or by the editors themselves), with the correct video/audio settings. This operation will render the effects in the pre-set format and create an AAF file, which will trigger a transfer and export to GV STRATUS.

This process takes place in the background, thanks to the GV STRATUS Workflow Rules Engine, creating a new video file on the K2 Storage and within the pre-determined GV STRATUS/K2 bin. Multiple send destinations can be set, so that different formats and different GV STRATUS/K2 bin destinations can be selected. If the edit contains media in a mixture of formats, the transfer process can also transcode all content to a variety of formats, which can be configured using the GV STRATUS Workflow Rules Editor (this requires a chargeable GV STRATUS license). This is where multiple “Send To” destinations can have different preset formats. All media on the timeline must have the same frame rate, however.

If working in a news production environment with a Newsroom Computer System (NRCS) such as iNEWS, ENPS, Octopus or OpenMedia, it is possible to send the clip associated with the NRCS MOS ID, a.k.a., the unique identifier that links the video with the text for each story. Users simply access the GV STRATUS Assignment List to copy the correct MOS ID, and paste it on to the “Filename” field.



The user can monitor the transfer process using the GV STRATUS monitor:



Name	Source	Destination	State	Progress	Type
ClifEnviro12-720P.MXF	\\10.1.4.200\nas\Impo...	\\10.1.4.180\TempStorag...	Complete	100%	Transfer Job
ClifEnviro12-720P.MXF	\\10.1.4.200\nas\Impo...	\\10.1.4.180\TempStorag...	Complete	100%	Transfer Job
Aquarium	UnmanagedFTP:V:/01_...	HB-SAN:V:/From Singapo...	Complete	100%	Transfer Job
000TEST1_DEMO002Y	HB-SAN:V:/To Archive/...	FTP-Archive:Archive/New...	Complete	100%	Transfer Job
000TEST1_DEMO002Y	HB-SAN:V:/To Singapo...	HB-SAN:V:/To Archive/00...	Complete	100%	Transfer Job

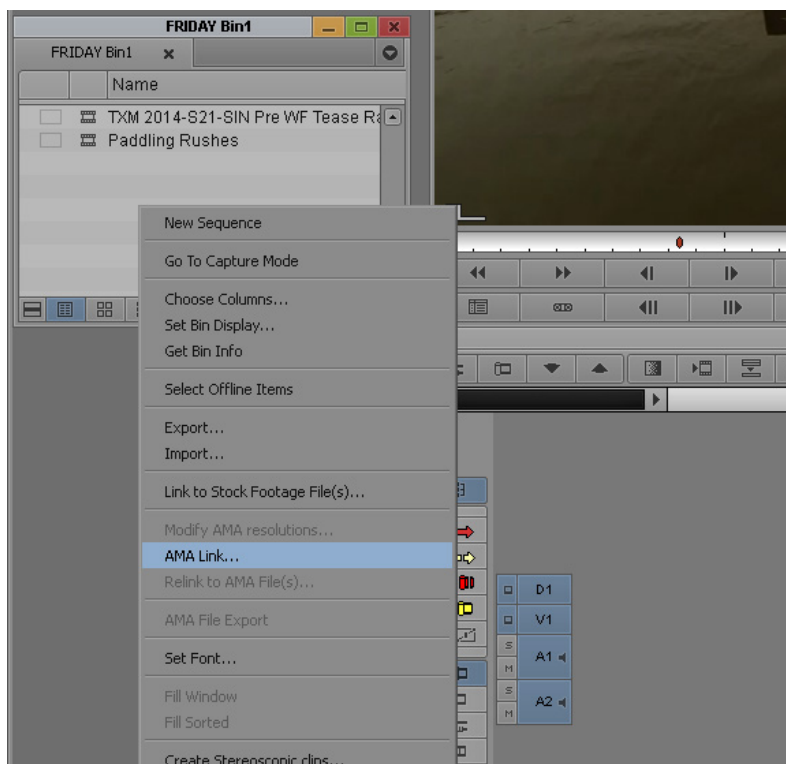
As soon as the first few seconds of the file arrive on the K2/GV STRATUS system, the file can be previewed and played out to air. In other words, growing files can be played out while still being transferred from the Avid editor to the GV STRATUS/K2 production system. Equally, the MOS-connected NRCS will update the status of the video story to “READY.” Up to three simultaneous file transfers can be sent if the system is configured to do so.

In summary, the transfer workflow with GV STRATUS provides full asset searching capabilities, proxy preview and metadata entry before sending the media to the Avid NLE.

Edit-In-Place with AMA Link

To satisfy fast turnaround and collaborative production requirements in environments such as newsrooms and studios, it can be highly desirable to be able to use various Avid edit systems connected directly to the K2 server and storage infrastructure without having to transfer or copy media first. This is accomplished using Avid Media Access (AMA) interface technology, which permits the Avid applications to view and access the K2 file system.

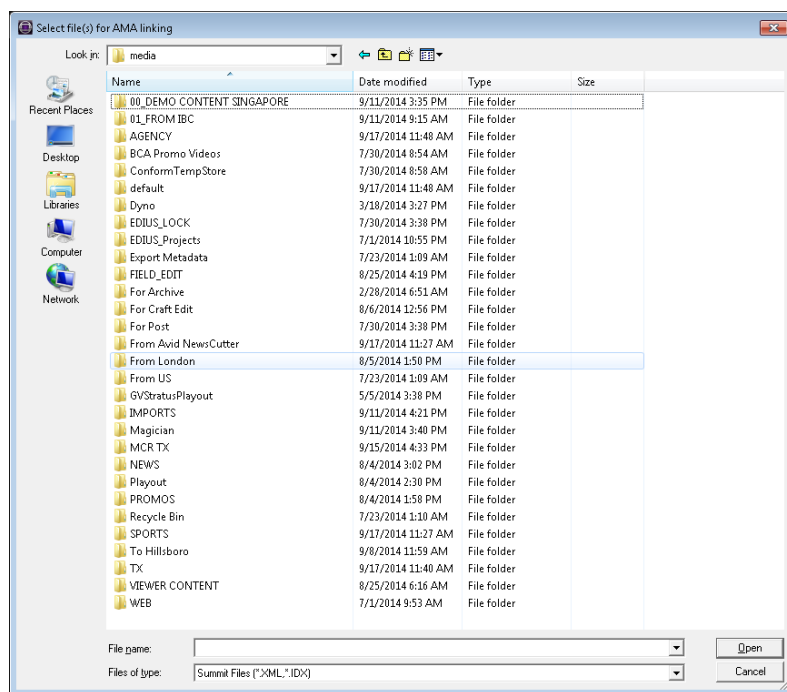
Once the Avid workstation is configured as a K2 client and networked to the K2 shared storage system, users can navigate to K2 bins, and view their contents as Windows folders.



Right-click in the Avid bin and select “AMA Link.”

The user can open individual clips/sub-clips or the whole contents of a bin, or set of bins. This process creates a direct link between the Avid NLE and the K2 storage, without the need to transfer any media up front. Once all the required master clips are within the Avid bin, edit-in-place can take place as usual. This process also works when using AMA to link to growing files, such as media that is still being recorded or imported onto the K2 storage. Asset metadata such as markers, comments, etc., are also shown on the Avid bin. The exact metadata fields being transferred can be configured on the GV STRATUS control panel.

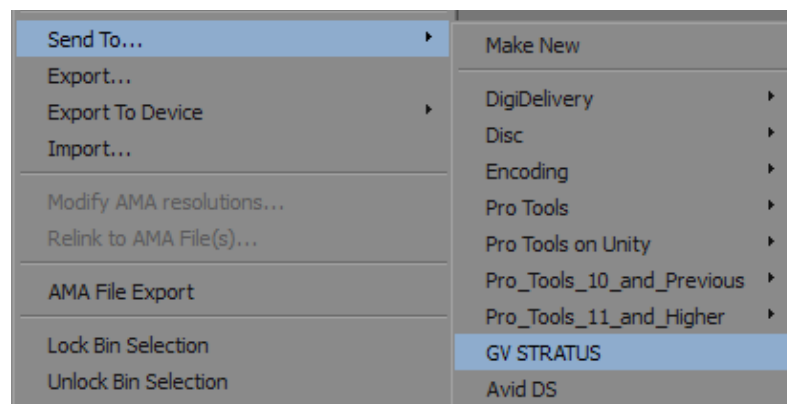
When editing is complete, the user can follow the same steps to send the material back to the GV STRATUS/K2 system, as described in the previous “Transfer Workflow” section. Users simply right-click on the sequence in the Avid bin, and select “Send To” with the pre-set destination on the K2/GV STRATUS system. From GV STRATUS version 4.5 and after it is not required for the user to consolidate their edit before sending to K2. The transfer process will automatically consolidate the edit first and then transfer to GV STRATUS/K2.



Navigate to the correct K2 storage bin, and select the relevant file(s) for editing.

Multiple send destinations can be set, so that different formats and different GV STRATUS/K2 bin destinations can be selected. The user can monitor the transfer process using the GV STRATUS monitor as shown above. If the edit contains media in a mixture of formats, the transfer process can also transcode all content to a variety of formats, which can be configured using the GV STRATUS Workflow Rules Editor (this requires a chargeable GV STRATUS license). This is where multiple “Send To” destinations can have different preset formats. All media on the timeline must have the same frame-rate, however.

Again, if working in a news production environment and with a NRCS connected to GV STRATUS via the MOS protocol, the user can use the news story’s MOS ID to name the final sequence when sending from Avid. This will then link the video placeholder to the text and update the story status to “READY”.



Considerations

- An Avid Transfer Manager server is not required for the above workflows.
- This workflow is supported from GV STRATUS version 3.5 and higher. For previous versions of GV STRATUS, please contact your Grass Valley representative.
- This workflow is supported for Avid Media Composer, NewsCutter and Symphony.
- The following video standards and formats are supported, but standards conversion during transfers — e.g., from PAL to NTSC, or 720i/720p to 1080i/1080p — is not currently possible.

Avid Systems	GV Systems	Supported formats
Media Composer 6.5 and up News Cutter 10.5 and up Symphony 6.5 and up	K2 Summit 3G 9.x and up K2 Solo 3G 9.x and up GV STRATUS 3.5 and up	SD: DVCPRO 25/50 IMX 30/40/50 HD: DVCPROHD XDCAM HD —1080i, 720p @ 25, 35, 50 Mb/s XDCAM EX AVC-Intra 50/100 (optional license) AVC-Intra Class 100 1080p 50/60 Level A (optional license) DNxHD: 120/145/185/220 Mb/s 720p and 1080i (optional license)

Summary

The open GV STRATUS platform integrates with all leading nonlinear editors, including Grass Valley EDIUS, Adobe Premiere Pro CC, Apple Final Cut Pro and Avid NLEs (including those connected to ISIS storage, with or without Avid Interplay PAM). Two different workflows are possible for integration with Avid NLEs:

- Transferring media files up front, providing full access to the GV STRATUS nonlinear workflow production tools
- Quickly linking to video files via AMA and editing-in-place

With either choice of streamlined GV STRATUS/Avid workflows, editors have a range of tools at their fingertips that facilitates the creative process and allows them to reduce time-to-air.

References

- GV STRATUS Topic Library
- GV STRATUS Blog: Transfers to Avid Media Composer (video)



GVB-1-0433C-EN-AN

WWW.GRASSVALLEY.COM

Join the Conversation at **GrassValleyLive** on Facebook, Twitter, YouTube and **Grass Valley - A Belden Brand** on LinkedIn.



Belden, Belden Sending All The Right Signals and the Belden logo are trademarks or registered trademarks of Belden Inc. or its affiliated companies in the United States and other jurisdictions. Grass Valley, EDIUS, GV STRATUS, K2 Solo and K2 Summit are trademarks or registered trademarks of Grass Valley. Belden Inc., Grass Valley and other parties may also have trademark rights in other terms used herein.

Copyright © 2015-2016 Grass Valley Canada. All rights reserved. Specifications subject to change without notice.