

# Using Final Cut Pro With DNP Products

Instruction Guide

SOFTWARE VERSION 5.1

071838100  
NOVEMBER 2004

*the most watched worldwide*

**Copyright**

Copyright © 2004 Thomson Broadcast and Media Solutions, Inc. All rights reserved. Printed in the United States of America.

This document may not be copied in whole or in part, or otherwise reproduced except as specifically permitted under U.S. copyright law, without the prior written consent of Thomson Broadcast and Media Solutions, Inc., P.O. Box 59900, Nevada City, California 95959-7900

**Trademarks**

Grass Valley, NewsEdit XT, and NewsShare are either registered trademarks or trademarks of Thomson Broadcast and Media Solutions in the United States and/or other countries. Other trademarks used in this document are either registered trademarks or trademarks of the manufacturers or vendors of the associated products. Thomson Broadcast and Media Solutions products are covered by U.S. and foreign patents, issued and pending. Additional information regarding Thomson Broadcast and Media Solutions' trademarks and other proprietary rights may be found at [www.thomsongrassvalleygroup.com](http://www.thomsongrassvalleygroup.com).

**Disclaimer**

Product options and specifications subject to change without notice. The information in this manual is furnished for informational use only, is subject to change without notice, and should not be construed as a commitment by Thomson Broadcast and Media Solutions. Thomson Broadcast and Media Solutions assumes no responsibility or liability for any errors or inaccuracies that may appear in this publication.

**U.S. Government  
Restricted Rights  
Legend**

Use, duplication, or disclosure by the United States Government is subject to restrictions as set forth in subparagraph (c)(1)(ii) of the Rights in Technical Data and Computer Software clause at DFARS 252.277-7013 or in subparagraph c(1) and (2) of the Commercial Computer Software Restricted Rights clause at FAR 52.227-19, as applicable. Manufacturer is Thomson Broadcast and Media Solutions, Inc., P.O. Box 59900, Nevada City, California 95959-7900 U.S.A.

**Revision Status**

<b>Rev Date</b>	<b>Description</b>
November 30, 2004	Release 071-8381-00 for Software Version 5.1

# ***Using Final Cut Pro With DNP Products***

---

NewsEdit allows you to work with Apple's Final Cut Pro video editing application. Files created in NewsEdit, version 5.1 and later, and created in a shared environment, include a .mov file as one of its components, which makes it compatible with the Final Cut Pro format. You can also export a sequence as an XML EDL which can be imported into Final Cut Pro for additional editing.

Use these instructions to install and use the Final Cut Pro plug-in in your newsroom.

This document discusses how to:

- Install the Grass Valley bundle plug-in
- Mount the shared database drive on the Apple computer
- Configure your system to use less bandwidth
- Create a SmartBin in NewsEdit
- Use Final Cut Pro in your newsroom workflow
- Convert existing NewsEdit files to .mov files



## Installing the Grass Valley Plug-in

The first step is to install the Grass Valley plug-in to Final Cut Pro.

To install the Grass Valley plug-in:

1. Insert the Grass Valley FCP-Menu CD-ROM into the drive of the Apple machine.
2. Copy the file **GrassValley.bundle** to Home/Library/Preferences/Final Cut Pro User Data/Plugins.

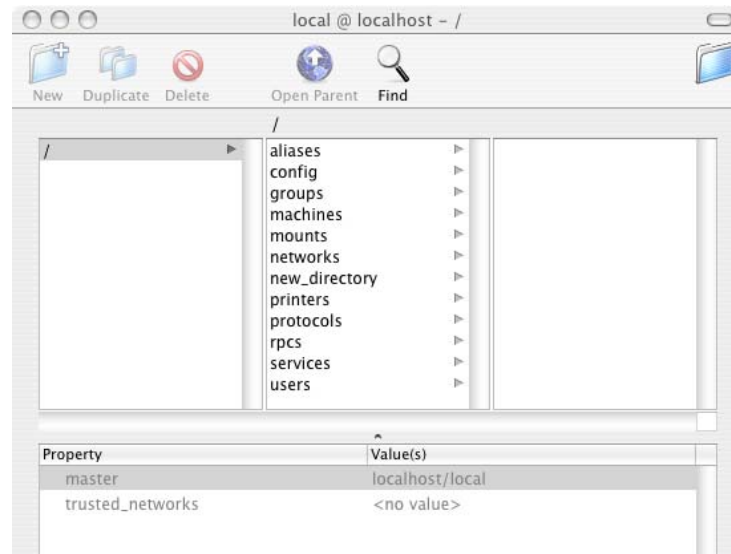
The plug-in is ready to use.

## Mounting the Shared Drive

You need to mount the V: drive onto your Apple computer in order to use files on the shared database.

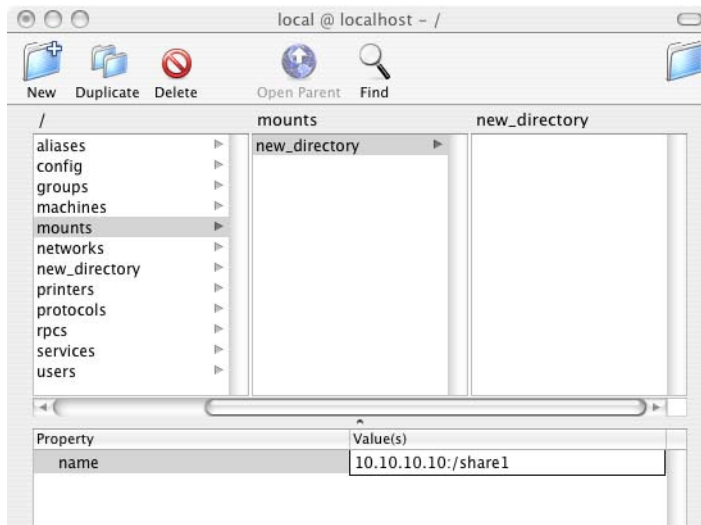
To mount the drive:

1. Launch **NetInfo Manager** from the Applications/Utilities folder.
2. Click the lock in the lower left corner and authenticate.
3. Click the **/mounts** directory.





4. Click **New+**. An item named `new_directory` appears.
5. Double-click on the Value field **new\_directory** in the bottom pane for the name property. Change it to **server IP address:/Shared Directory** (notice the extra `!` after the server IP address).

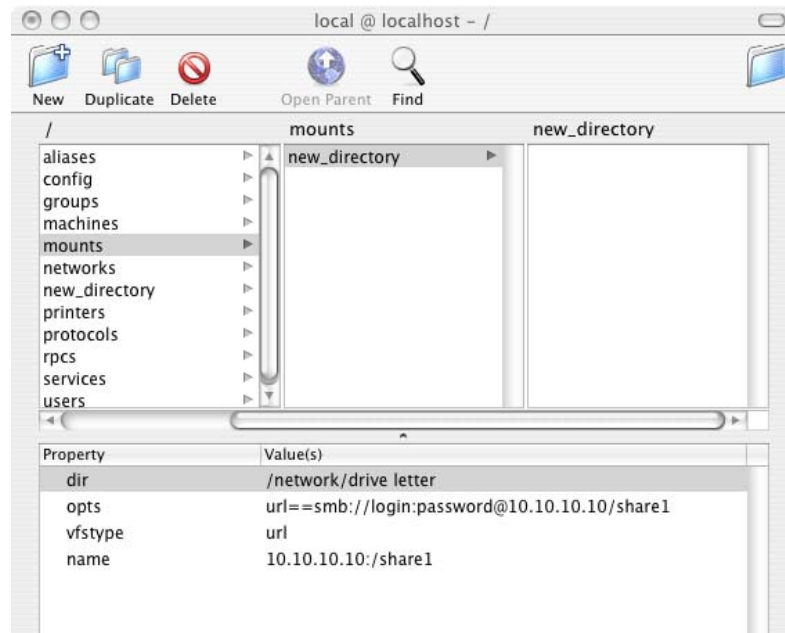


6. Select **New Property** from the Directory menu. Set the property name to **vfstype** and the value to **url**.
7. Add 2 new properties using the following names and values:

opts	<b>url==smb://loginName:password@sNASIPAddress/SharedDirectory</b> The login name and password are the same as for the Apple computer. Example: <b>url==smb://administrator:admin@10.10.10.10/share1</b>
dir	<b>/network/sharedDriveLetter</b> Example: <b>/network/V</b>



Your window should look similar to this:



8. From the Domain menu at the top of your screen, select **Save Changes** and restart your Mac.
9. Verify that the V: drive is mounted correctly.

## Configuring Your System to Use Less Bandwidth

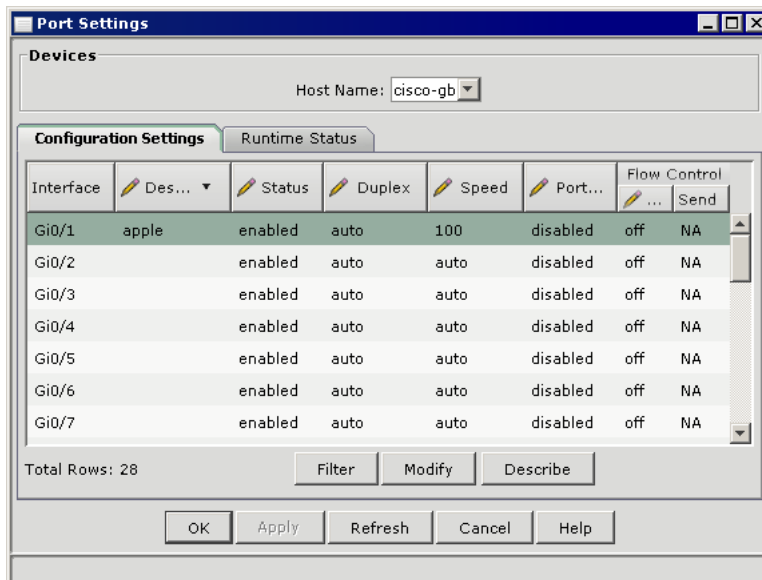
Both the Macintosh and Final Cut Pro have a tendency to use large amounts of bandwidth when doing multi-layer operations, which may result in dropped frames in NewsEdit or other systems on the NAS (storage). In order to avoid this, it is recommended that you configure your network ports to 100BaseT. You need to configure both the Cisco switch and the Apple computer running Final Cut Pro.

### Cisco Switch

To modify the port configuration:

1. Download the Cisco Network Assistant from [www.cisco.com](http://www.cisco.com).
2. Open the Cisco Network Assistant.
3. On the Connect screen, enter the IP address of your switch and click **Connect**. Logon to the application.
4. When the application opens, select **Port | Port Settings** from the left pane.

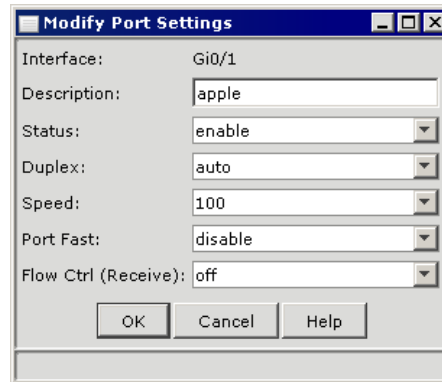
The Port Settings window appears, listing available ports.





5. Select the port you want to change and click **Modify**.

The Modify Port Settings window appears:



6. Add a description for the port.
7. In the Speed pull-down menu, select **100**.
8. Click **OK**.
9. Click **OK** again to close the Port Settings window.
10. Exit the Cisco Network Assistant.

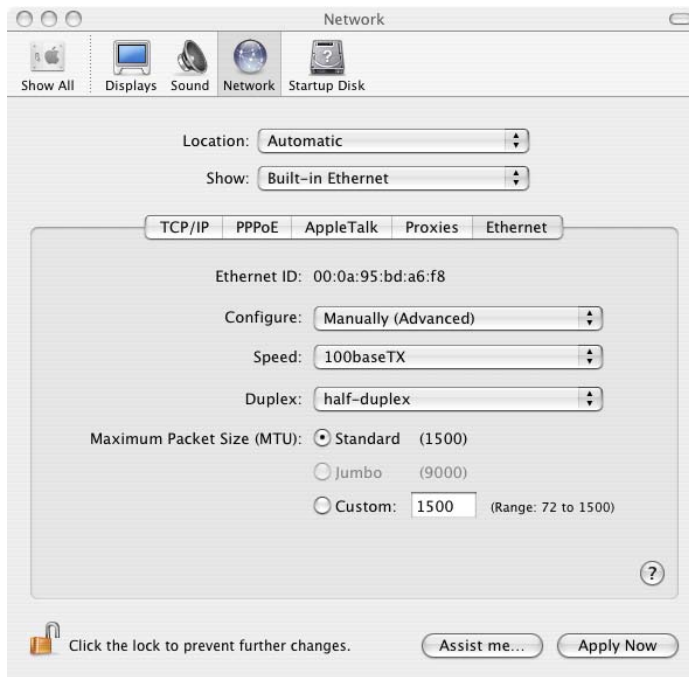


## On the Apple Computer

To set your Apple network to 100BaseT:

1. Under the Apple menu, select **System Preferences**.
2. Click **Network**.
3. In the Network window, select **Built-in Ethernet** and click the **Configure** button.
4. Under the Ethernet tab, select the following options:

Configure	<b>Manually (Advanced)</b>
Speed	<b>100baseTX</b>



5. Click **Apply Now**.
6. Close the System Preferences window.



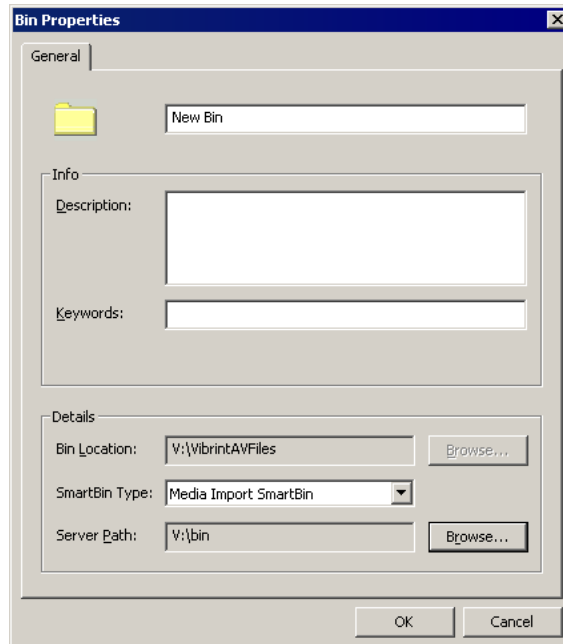
## Creating a Media Import SmartBin on NewsEdit

Media Import SmartBins allow you to automatically import QuickTime DV25 and DV50 .mov files into NewsEdit. This allows you to use Apple's Final Cut Pro video editing application, within a NAS environment, to create news footage and then automatically import it into the news system.

Once set up, whenever you export a file into the source folder, it is automatically imported into the NewsEdit Bin. You can then use it in a sequence.

To create a SmartBin:

1. Open the NewsEdit application.
2. Click the **New Bin** button on the Bin toolbar.

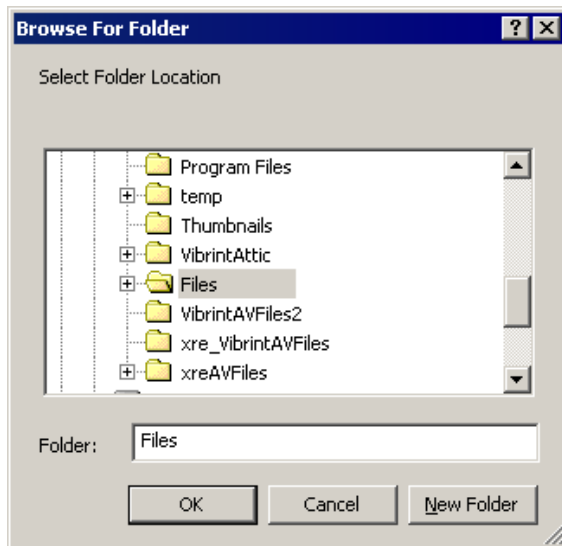


3. Select **Media Import SmartBin** from the drop-down list.

This allows you to import QuickTime DV25 .mov and DV50 .mov files.

4. Click **Browse** to the right of the Server Path field.

The Browse For Folder window appears:



5. Select the folder to monitor and click **OK**.

The Server Path fills in with the folder location.

6. Click **OK** to create the SmartBin.

NewsEdit now monitors the Media Import folder and imports new media to this bin automatically.



## Workflows

You can use Final Cut Pro and NewsEdit in two different ways in your newsroom workflow: you can create a sequence in NewsEdit and add further finish editing using Final Cut Pro, or you can create a sequence from scratch in Final Cut Pro and choose clips directly off the NAS.

### Editing on NewsEdit

When you edit a sequence in NewsEdit and use Final Cut Pro for additional tweaking, you follow this workflow:

1. Create a sequence in NewsEdit.
2. Export the sequence as a Final Cut Pro EDL (XML file).
3. Import the XML file into Final Cut Pro.
4. Tweak the sequence using Final Cut Pro.
5. Export the file to the media import SmartBin.
6. In NewsEdit, send the file for playout.

### Exporting a NewsEdit Sequence as a Final Cut Pro EDL

You can export a sequence from NewsEdit to a Final Cut Pro machine when both machines are part of a Network Attached Storage (NAS) system. This allows for quick editing of a sequence on NewsEdit and then transferring the unfinished piece to Final Cut Pro for additional editing.

Files are transferred using NewsEdit's XML EDL format and Apple's XML Interchange format. These components of the NewsEdit sequence are transferred:

- Clips
- Rendered effects and titles (if mixed down)
- Dissolves (other transitions, including wipes, pushes, and slides are converted to a dissolve)
- Varispeed
- Fit to Fill
- Audio voice disguise

To export a sequence to Final Cut Pro:

1. Highlight the sequence in the Bin you want to export.
2. Choose **File | Export | Final Cut Pro EDL**.
3. Navigate to the folder where you want to export the EDL.
4. Enter a name for the file and click **Save**.

You can now import the file using Apple's Final Cut Pro application.

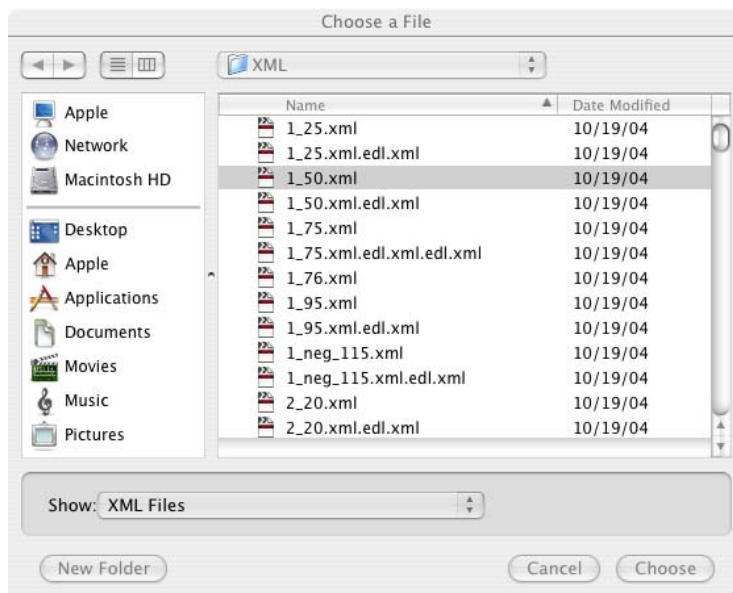
### **Importing a NewsEdit Sequence on Final Cut Pro**

You can import an XML EDL from NewsEdit into Final Cut Pro which allows you to perform additional editing.

To import an XML:

1. In Final Cut Pro, select **File | Import | XML**.

The Choose a File window appears:



2. Navigate to the folder containing the XML file you want, select the file, and click **Choose**.

The file is imported into Final Cut Pro.



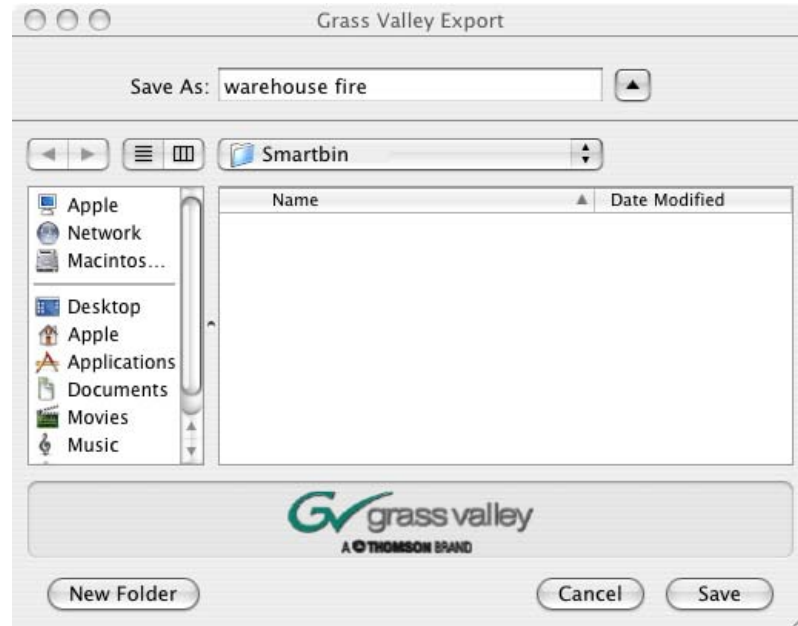
## Exporting a Final Cut Pro File

Once you are finished editing a clip in Final Cut Pro, you can export it in a format that NewsEdit recognizes. This allows you to playout the clip/sequence using a Grass Valley DNP product.

To export a Final Cut Pro file:

1. In Final Cut Pro, select **File | Export | Export to Grass Valley**.

The Grass Valley Export window appears:



2. Enter a name for the file in the Save As field.
3. Select the directory of the Media Import SmartBin you specified when you set up the SmartBin for the location.
4. Click **Save**.

The file is converted from a .mov file into a NewsEdit clip.

## Editing on Final Cut Pro

When you use Final Cut Pro for creating sequences, you follow this workflow:

1. In Final Cut Pro, get the media from NAS storage.
2. Create a local copy of your Final Cut Pro project.
3. Create a sequence in Final Cut Pro.
4. Export the file to the media import SmartBin.
5. In NewsEdit, send the file for playout.

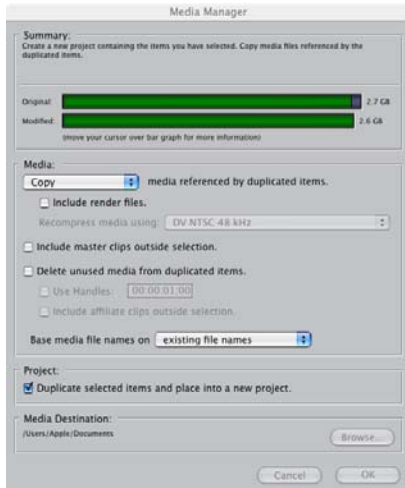
### Creating a Local Copy of a Final Cut Pro Project

To optimize bandwidth usage for projects requiring frequent access to storage, import the NewsEdit XML file and create a local copy of the media in Final Cut Pro.

Regardless of the machine's RT Extreme settings, using more than three or four layers in Final Cut Pro will result in dropped frames.

To create a local copy of your project:

1. In Final Cut Pro, select **File | Open Grass Valley** and open the XML file.
2. Select the clip in the Final Cut Pro bin.
3. Select **File | Media Manager**; the Media Manager window appears:



4. Make sure that the Media field is set to **Copy media referenced by**



**duplicated items** and the Media Destination is local on the Apple computer.

The other settings can be set to your preferences.

5. Click **OK**.

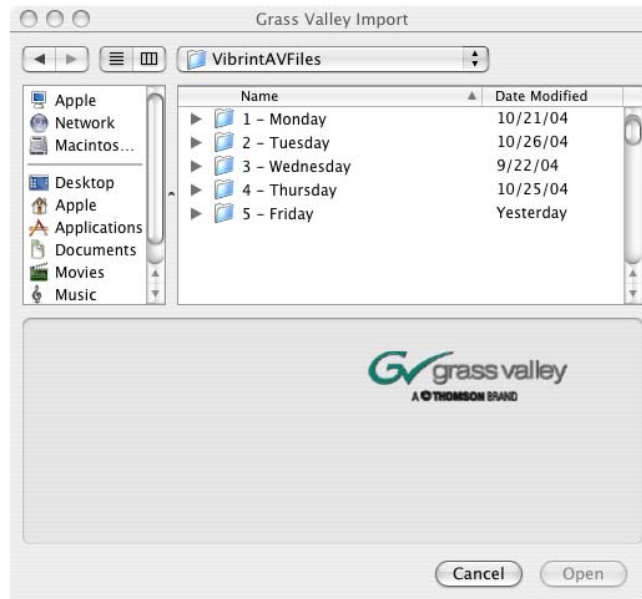
### Opening a NewsEdit Clip on Final Cut Pro

You can also open a NewsEdit clip on Final Cut Pro instead of importing the entire sequence.

To open a NewsEdit clip:

1. In Final Cut Pro, select **File | Open Grass Valley**.

The Grass Valley Import window appears:



2. Select the clip and click **Open**.

The clip opens in Final Cut Pro and is available for editing.



## **Converting Existing NewsEdit Files to .mov Format**

With the 5.1 release of NewsEdit, all clips on a Network Attached Storage (NAS) System automatically include a .mov file as one of its components. This allows you to bring a NewsEdit sequence into Final Cut Pro for additional editing.

If you need to, you can convert previously created files to .mov format:

1. Go to **Start | Program Files | Vibrant 3.0 | Utilities** and select **MediaServicesTestApp**.
2. Choose **Utility | Create MOV from VMF**.
3. Enter the name of the database server where you want to convert the files and click **OK**.
4. Select the bin that you'd like to convert and click **OK**.

The files begin converting. This process may take a while, depending on how many files you are converting.



---

*Final Cut Pro Instruction Guide*