

Kaleido-X16

Super-silent, 16 input, dual output multiviewer

Quick Start Guide

M869-9905-111

12 January 2014



A **BELDEN** BRAND

Copyright & Trademark Notice

Copyright © 2009–2014, Miranda Technologies Partnership. All rights reserved.

Belden, Belden Sending All The Right Signals, and the Belden logo are trademarks or registered trademarks of Belden Inc. or its affiliated companies in the United States and other jurisdictions. Miranda, Kaleido-X16, Kaleido-X, iControl, and Densité are trademarks or registered trademarks of Miranda Technologies Partnership. Belden Inc., Miranda Technologies Partnership, and other parties may also have trademark rights in other terms used herein.

Terms and Conditions

Please read the following terms and conditions carefully. By using Kaleido multiviewer documentation, you agree to the following terms and conditions.

Miranda Technologies Partnership (“Miranda”) hereby grants permission and license to owners of Kaleido multiviewers to use their product manuals for their own internal business use. Manuals for Miranda products may not be reproduced or transmitted in any form or by any means, electronic or mechanical, including photocopying and recording, for any purpose unless specifically authorized in writing by Miranda.

A Miranda manual may have been revised to reflect changes made to the product during its manufacturing life. Thus, different versions of a manual may exist for any given product. Care should be taken to ensure that one obtains the proper manual version for a specific product serial number.

Information in this document is subject to change without notice and does not represent a commitment on the part of Miranda.

Warranty information is available in the Support section of the Miranda Web site (www.miranda.com).

Title	Kaleido-X16 Quick Start Guide
Part Number	M869-9905-111
Revision	12 January 2014, 1:53 pm

Safety Compliance



This equipment complies with the requirements of the following standards for safety of information technology equipment:

- CSA-C22.2 No. 60950-1-07 (2nd Edition)
- UL 60950-1 (2nd Edition)
- EN 60950-1:2006 ITE
- IEC 60950-1:2005 (2nd Edition)

WARNING

An appropriately listed/certified mains supply power cord must be used for the connection of the equipment to the mains voltage at either 120V~ or 240V~

CAUTION

**This equipment is meant to be installed in a restricted access location
These servicing instructions are for use by qualified service personnel only**

To reduce the risk of electric shock, do not perform any servicing other than that contained in the operating instructions unless you are qualified to do so. Refer all servicing to qualified service personnel. Disconnect both power supply units before servicing. Servicing should be done in a static-free environment.

Battery handling

There is a danger of explosion if the battery is replaced incorrectly. Replace the battery only with the same or equivalent type recommended by the manufacturer. Dispose of used batteries according to the manufacturer's instructions. Before disposing of your Miranda equipment, please review the "Disposal and Recycling Information" appendix, in the *Kaleido-X16 Hardware Description & Installation Manual*.

Electromagnetic Compatibility



This equipment has been tested for verification of compliance with FCC Part 15, Subpart B requirements for class A digital devices.

Note: This equipment has been tested and found to comply with the limits for a Class A digital device, pursuant to Part 15 of the FCC rules. These limits are designed to provide reasonable protection against harmful interference when the equipment is operated in a commercial environment. This equipment generates, uses, and can radiate radio frequency energy, and, if not installed and used in accordance with the instruction manual, may cause harmful interference to radio communications. Operation of this equipment in a residential area is likely to cause harmful interference in which case the user will be required to correct the interference at his own expense.

CE This equipment has been tested and found to comply with the requirements of the EMC directive 2004/108/EC:

- EN 55022 Class A Radiated and conducted emissions
- EN 61000-3-2 Limits for harmonic current emissions
- EN 61000-3-3 Limitation of voltage fluctuations and flicker
- EN 61000-4-2 Electrostatic discharge immunity
- EN 61000-4-3 Radiated, radio-frequency, electromagnetic field immunity
- EN 61000-4-4 Electrical fast transient immunity
- EN 61000-4-5 Surge transient immunity
- EN 61000-4-6 Conducted disturbances immunity
- EN 61000-4-8 Power frequency magnetic field immunity
- EN 61000-4-11 Voltage dips, short interruptions and voltage variations immunity

Kaleido-X16

Setting Up Your Multiviewer

Welcome to the Kaleido family of multiviewers! This Quick Start Guide is designed to help you get your Kaleido-X16 multiviewer up and running for the first time. The following sections will guide you through the installation of a Kaleido-X16 system in its default configuration.

Summary

<i>Introduction</i>	1
<i>Getting Organized</i>	3
<i>Step 1: Physical Setup</i>	4
<i>Step 2: Networking Setup</i>	9
<i>Step 3: XEdit Installation</i>	14

Introduction

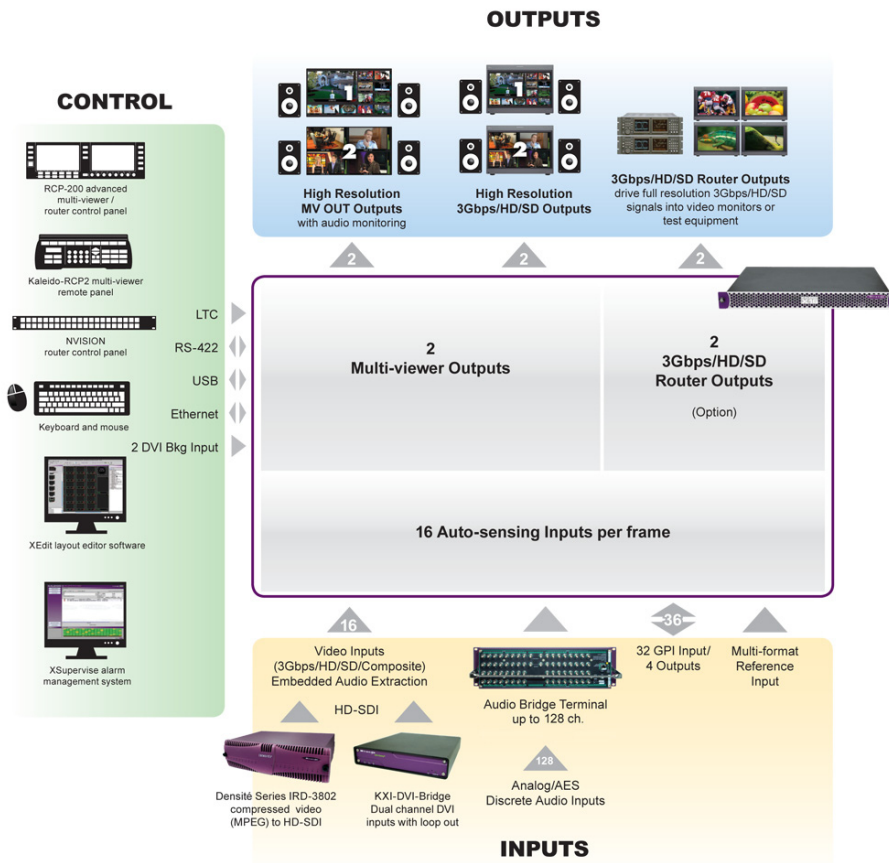
Miranda's Kaleido family of multiviewers ranges from quad-splits to large-scale, multi-room monitoring systems, with outstanding image quality and signal flexibility. The Kaleido multiviewers are available in different models: the new Kaleido-MX, the Kaleido-IP, the Kaleido-X (7RU), the Kaleido-X (4RU), the Kaleido-X16, and the Kaleido-XQUAD frames, as well as the new Kaleido-Modular-X cards, and the Kaleido-Modular KMV-3901/3911 cards.

The **Kaleido-X16** can display 16 3Gbps, HD, SD or analog inputs across two high-resolution outputs at multiple sizes. With its router option, the Kaleido-X16 can also behave as a router, with 16 input channels as sources and two router outputs as destinations. Up to three Kaleido-X16 units can be configured into a single- or dual-output cascade system supporting up to 48 inputs.

At the heart of every multiviewer system is the **Kaleido-X software**, which includes two client applications:

- **XAdmin** is a Web client that your system administrator will use to manage the multiviewer system.
- **XEdit** is a client application used to create layouts for the monitor wall, and to configure the multiviewer, from your PC or laptop.

A Kaleido-X16 multiviewer system in its default configuration includes a number of layout presets. The default output head configuration is set to automatically detect the resolution of the associated display. If this information is not available, it will fall back to 1280 × 1024 @ 60 Hz. Consult the *Kaleido-X User's Manual* (on the DVD that shipped with your system) for instructions on how to define rooms and layouts according to your specific requirements.



Kaleido-X16 system overview

The Kaleido-X16 frame is 1 RU high. Input and output connectors are mounted on a connector panel on the rear of the frame. The redundant power supply is installed in the front of the frame. The front cover can be opened to provide access to the PSUs, CompactFlash card, USB connector, and basic LEDs. The Kaleido-X16 frame incorporates the following key elements:

- A rack-mountable mechanical framework (for mounting into a 19-inch EIA rack)
- A removable door to cover and protect the front of the frame
- An optional redundant power supply
- Ventilation



Front view of the Kaleido-X16 frame (PSUs installed; front cover removed)

The Kaleido-X16 system is available in two model types: the Kaleido-X16-D and the Kaleido-X16-S. There are two heads on the Kaleido-X16-D and one head on the Kaleido-X16-S.

Getting Organized

This section provides information about system requirements, and items shipped with your Kaleido-X16.

Required Materials

Your Kaleido-X16 system package includes the following:

- A Kaleido-X16 frame with one power supply pre-installed (second power supply optional)
- Two support brackets
- One mouse
- Four serial port adapters (one with straight cabling and one with crossover cabling for each of the two RS-422 ports on your multiviewer):

Part number	Adapter cabling	RS-422 pinout at the DE-9P connector
1737-3000-102	Straight	Controller (SMPTE master) mode
1792-3700-100	Crossover	Tributary (SMPTE slave) mode

- One AC power cord per power supply
- The Kaleido-X16 Quick Start Guide (this document)
- DVD including the Release Notes for the current version of the Kaleido-X software, the Kaleido-X User's Manual, database samples, Quick Start guides and hardware reference manuals for all multiviewer models

Note: In line with our commitment to environmental preservation, only the Quick Start Guide for your multiviewer model, and some ancillary documents (e.g. welcome letters, warranty cards) are distributed in printed form. All manuals are available on the DVD that shipped with your multiviewer. See the "Documentation" section of the Release Notes for a complete list. You can obtain the latest version of the manuals, the Release Notes, as well as software and useful data, from the *Software and documentation* section of Miranda's support portal.

In addition to the above, you will need the following (not supplied):

- Up to 2 displays
- A dedicated 100Base-T Ethernet switch with enough ports for the Kaleido-X16, client PCs, Kaleido-RCP2, and Audio Bridge Terminals
- Client PC (see below for system requirements)
- Cables (to connect your multiviewer to video sources, to displays, and to the network):

Cable type	Purpose
CAT-5	For Ethernet connectivity

Cable type	Purpose
Display cables	Either extension modules—for example Miranda's DXF-200 (part number DXF-200-B)—or HDMI cables
Video cables	Standard coaxial cables with BNC connectors

Notes

- On all Miranda multiviewers, the network adapters are set to auto-negotiate. By default, the connection speed and duplex mode will be set automatically based on the corresponding port settings on the switch.
 - Do not use a DVI-to-HDMI adapter to connect a DVI cable to your multiviewer. The adapter would interfere with the multiviewer's AC cable and cause undesirable strain on the connection. You may order suitable HDMI cables from Miranda—HDMI w/Lock to DVI female cable (1ft), part no. KXC-HDMI-L-DVI.
-

System Requirements for a Client PC

A client PC running Windows XP (or Windows 7) is required to access the XAdmin Web client, as well as to run the XEdit application.

Minimum configuration	1 GB of RAM Pentium 4 at 1 GHz
Recommended	At least 2 GB of RAM Core 2 Duo at 2 GHz, or better
Hard disk	At least 125 MB free

Step 1: Physical Setup

Mounting the Kaleido-X16 in a Rack

To mount the Kaleido-X16 in a standard 19-inch rack

- 1 Install both support brackets at the back of the rack by using suitable screws and washers (not included), so that the bottom of the Kaleido-X16 frame will be supported by the brackets.
- 2 Position the Kaleido-X16 frame at the designated location within the rack, and secure the front of the frame to the rack by using suitable screws and washers (not included).

IMPORTANT

Mobile Installation

If you are deploying your Kaleido-X16 in a mobile unit, it is your responsibility to make sure the back of the multiviewer is securely attached to the rack. For instance you may install a blank panel at the back of the rack, so that it meets the top of the frame, to prevent the frame from bouncing away from the support brackets.

IMPORTANT *(continued)*

Ventilation

For proper ventilation, make sure the front and side panel air vents are not blocked and the air filter is clean.

Powering up the Kaleido-X16

To power up the Kaleido-X16

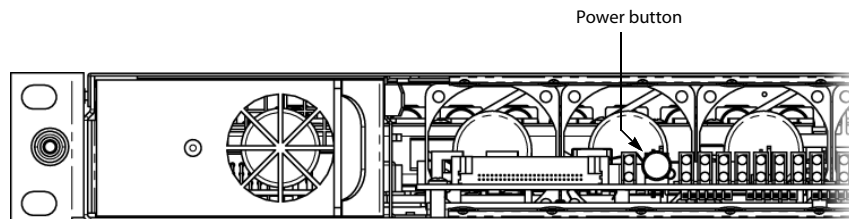
- 1 Plug the power cord(s) from the Kaleido-X16 into a grounded power outlet.

IMPORTANT

- If you only have **one PSU**, make sure you plug your power cable into the power connector on the right side of the rear connector panel (as you face the rear of the frame). This should be on the same side of the frame as the one PSU you have installed. If you do not do this, your system cannot draw power.
 - If you have two PSUs, make sure you plug in both power cables into both power connectors of the rear connector panel. If you do not do this your system cannot have PSU redundancy.
-

- 2 Press the power button at the front of the frame (behind the front cover).

The startup sequence takes a couple of minutes. The startup is completed when the CPU LED is solid green.



Setting up the Kaleido-X16 Hardware

To set up the Kaleido-X16 hardware

- 1 Make the required network and other connections to your Kaleido-X16 (see [Cabling Diagram](#), on page 8). Connect a client PC, the Kaleido-RCP2 (if available), and an Audio Bridge Terminal (if available) to a dedicated 100Base-T Ethernet switch. You can also connect a mouse and a keyboard to your Kaleido-RCP2.

Notes

- The Kaleido-RCP2, and Audio Bridge Terminal (ABT) are optional devices, and may not have been shipped with your Kaleido-X16 system. For information on these and other Kaleido-X16 options, please contact your Miranda sales representative.

Notes (continued)

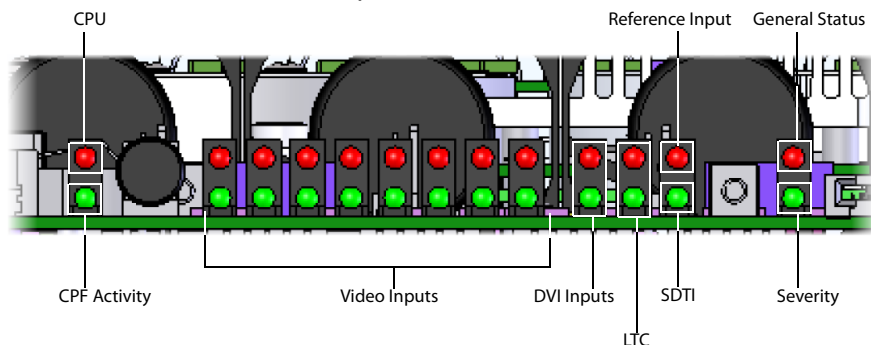
- You may need to upgrade your Audio Bridge Terminal and Kaleido-RCP2 devices (if available) to the latest firmware. The update files can be found on the DVD that shipped with your multiviewer, and on Miranda's support portal. Please refer to the *Kaleido-RCP2 Guide to Installation and Operation*, and to the *Audio Bridge Terminal Guide to Installation and Operation* (available on the DVD, and from the portal) for instructions on how to determine the firmware level, and how to perform the upgrade for these devices.

The Kaleido-X16 multiviewer has been configured to automatically detect the resolution of any connected display. If the required information is not available, then a fall-back resolution of 1280 × 1024 @ 60 Hz is used.

- Connect one output of the multiviewer to a display that supports this resolution (see [Cabling Diagram](#), on page 8). If you wish to use a different resolution, see [Changing the Output Resolution](#), below, for detailed instructions.

Note: If your display is not collocated with your Kaleido-X16 frame you may choose to employ a DXF-200 transmitter/receiver device that allows you to install a display up to 1,000 meters (3,300 feet) from the signal source. For more information on the DXF-200, refer to the *DXF-200 DVI/HDMI Optical Extension System User's Manual* (part no. M916-9900-104).

- Connect one or more video sources to your multiviewer's inputs (see [Cabling Diagram](#), on page 8).
- Check the LEDs in the Kaleido-X16 frame. Make sure that none are indicating an error condition (see table below). If a LED indicates an error condition, refer to your multiviewer's Hardware Description and Installation Manual.



LEDs on the front of the Kaleido-X16 frame (behind the cover)

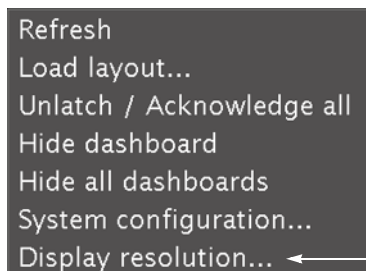
LED	LED Status						
	Green	Blinking green	Red	Blinking red	Yellow	Blinking yellow	Off
CPU	Normal operation	Application booting	Error	Live Update	OS Booting	N/A	Front cover is closed
CPF Activity	N/A	Activity	N/A	N/A	N/A	N/A	No Activity

LED	LED Status						
	Green	Blinking green	Red	Blinking red	Yellow	Blinking yellow	Off
Video Inputs	Inputs are locked	N/A	Inputs are unlocked, or no input	ERROR ON SIGNAL	N/A	N/A	Front cover is closed
DVI Inputs	Inputs are locked	N/A	Inputs are unlocked, or no input	ERROR ON SIGNAL	N/A	N/A	Front cover is closed
LTC	LTC valid	N/A	No signal	N/A	N/A	N/A	Front cover is closed
Ref. Input	Input is locked	N/A	Input is unlocked, or no input	ERROR ON SIGNAL	N/A	N/A	Front cover is closed
SDTI	Inputs are locked	N/A	Inputs are unlocked, or no input, or no SDTI signal	ERROR ON SIGNAL	N/A	N/A	Front cover is closed
Gen. Status	System OK	Intrusive self-diagnostic finished	Configuration Failed, Safe Mode	Firmware Upgrading	Boot up Diagnostic (Verbose switch on)	Firmware error	Front cover is closed
Severity	Boot OK	Booting	Boot error, Need live-update	Fatal error, CALL TECH SUPPORT	N/A	N/A	No power

Changing the Output Resolution

To change a display's resolution from the monitor wall

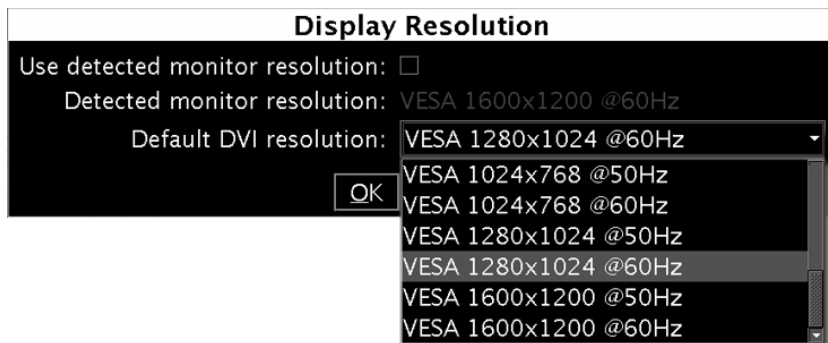
- 1 Connect a mouse to one of the USB connectors of the Kaleido-X16.
- 2 Right-click anywhere on the monitor wall, point to **Monitor wall** (if you clicked a monitor), and then click **Display resolution**:



The **Display Resolution** window appears:

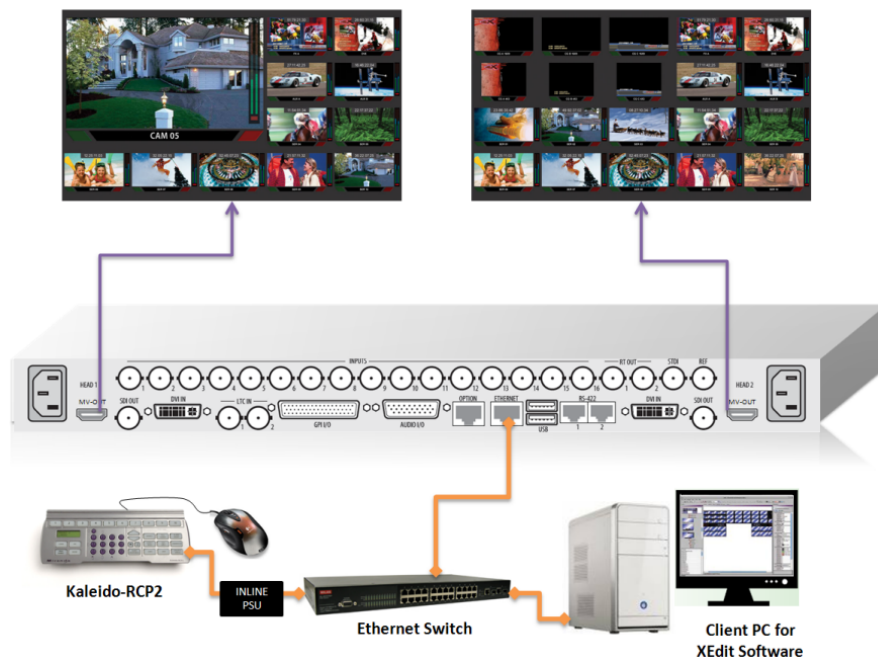


- If you would like the system to automatically select a resolution based on information from the connected display, select **Use detected monitor resolution**.
- If you would like to manually set (and fix) the resolution, select the desired resolution from the **Default DVI resolution** list:



- 3 Click **OK**.
The output resolution is adjusted accordingly.

Cabling Diagram



Kaleido-X16 cabling diagram

Step 2: Networking Setup

For the Kaleido-X16 multiviewer to join a TCP/IP network, it must be configured with an IP address, a network mask, a gateway, and a system name. In addition, a client PC must be configured to communicate with the multiviewer. You must also configure any Kaleido-RCP2, and Audio Bridge Terminal units you may have ordered.

The Kaleido-X16 is shipped with the following default settings:

System IP address	10.0.3.70
Network mask	255.255.0.0
Gateway	10.0.0.1

Note: If the IP address of the multiviewer has been changed (i.e. it no longer corresponds to the as-shipped configuration), it is still possible to determine the current setting. To determine the IP address of your Kaleido-X16 multiviewer, see [Finding the System IP Address and Application Version](#), below.

Changing the IP Address from the Monitor Wall

The IP address, system name, and other parameters can be set via a control panel on the monitor wall.

To change the IP address of the Kaleido-X16 from the monitor wall

- 1 Connect a mouse to one of the USB connectors of the Kaleido-X16.
- 2 Connect a keyboard to one of the USB connectors of the Kaleido-X16.
- 3 Right-click anywhere on the monitor wall, point to **Monitor wall** (if you clicked a monitor), and then click **System configuration**.
The **System Configuration** window appears.
- 4 Click the **Ethernet** tab.
- 5 Type the required frame IP address, network mask, and gateway address in the appropriate boxes.
- 6 Click **OK**.
- 7 When prompted to restart the system to apply your changes, click **Yes**.

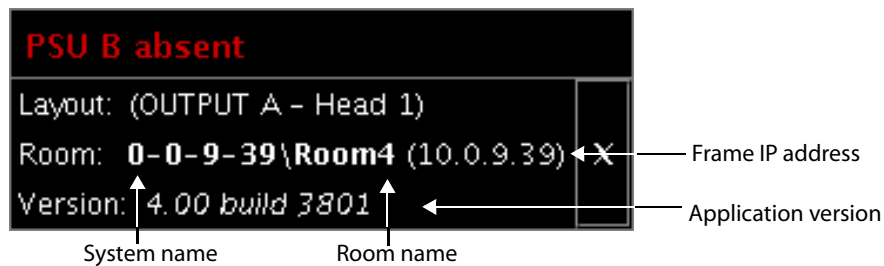
Finding the System IP Address and Application Version

To find the system IP address and application version

- 1 Connect a mouse to a USB connector: either the USB at the front of the frame or one of the two USB connectors on the rear connector panel.
- 2 Right-click anywhere on the monitor wall. On the shortcut menu, point to **Monitor wall** (if you clicked a monitor), and then click **Show dashboard** to display the dashboard associated with the current head. A small window appears, revealing the frame IP address and the system version. Take note of these values—they will be used later in the configuration process.



Display from output (partial view) showing dashboard at the bottom right



Enlarged view of dashboard.

Using the Kaleido-RCP2 with Default Settings

Note: The Kaleido-RCP2 unit is optional and is not included in the standard Kaleido-X16 package.

To start using the Kaleido-RCP2 with its default settings

- 1 Physically connect the Kaleido-RCP2 unit to the network using an Ethernet cable (see [Cabling Diagram](#), on page 8).

By default, the Kaleido-RCP2 is configured with DHCP enabled, so it will automatically be assigned an IP address by a DHCP server. If no DHCP server can be found, the

Kaleido-RCP2 will fall back to its default static IP address, subnet mask, and gateway settings:

Default IP address	10.0.3.191
Default subnet mask	255.255.0.0
Default gateway	0.0.0.0

Notes

- If you need to operate with a fixed IP address, you must use the Configuration menu to disable DHCP and set up the correct IP address, Network Mask, and Gateway (see the “Enabling or Disabling DHCP” and “Setting an IP Address, Subnet Mask and Gateway” sections in the *Kaleido-RCP2 Guide to Installation and Operation*, available on the DVD that shipped with your system.)
 - To access rooms located in other subnets, the Kaleido-RCP2 must be configured with the appropriate unicast IP addresses (see the “Configuring Unicast IP Addresses” section in the *Kaleido-RCP2 Guide to Installation and Operation*, available on the DVD that shipped with your system.)
-

- 2 On the Kaleido-RCP2 unit, press the ENTER button and hold it until the ESC button lights up.

The following message appears on the LCD display:

Configuration
ROOM SELECTION

- 3 Press ENTER again to obtain the room list from the multiviewers that are currently available on the network.

The message **ROOM Select** followed by the name of the first room available appears on the LCD display.

- 4 Press the **2** key (to move up in the list) or the **8** key (to move down the list) until **ROOMX16** is displayed.
- 5 Press ENTER, and then press ESC to exit the configuration menu.
- 6 Press the LOGIN button.

The following message appears on the LCD display:

LOGIN Position
Admin

- 7 Press ENTER to log on to your system as “Admin”.
A message prompting you for a password appears on the LCD display.
- 8 Press ENTER again (by default, there is no password).
The message “Access granted” will appear on the LCD display if the login is successful. If a mouse is connected to the Kaleido-RCP2, then you should be able to see and move the mouse pointer on the monitor wall.
- 9 Press any of the LAYOUT PRESETS buttons to load a predefined layout on the monitor wall.

If your system was configured prior to shipment, then a layout will appear on all displays. Otherwise, a gray screen will appear with the following message in the middle: "No layout has been assigned to this room. Please load a layout."

No layout has been assigned to this room. Please load a layout.

Note: To access other layouts, press the LOAD button. To assign a layout to a preset button, press and hold the button for more than six seconds while the desired layout is showing on the monitor wall.

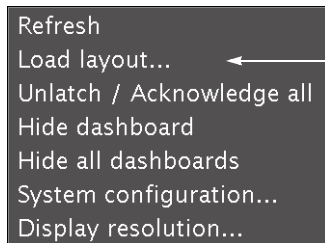
Loading a Layout

To load a layout on the monitor wall

- 1 Connect a mouse to the Kaleido-RCP2 (if available) and log on to the Kaleido-X16 from the Kaleido-RCP2, if you have not already done so (see [Using the Kaleido-RCP2 with Default Settings](#), on page 10).

Alternatively, connect the mouse directly to one of the USB ports on the Kaleido-X16 frame.

- 2 Right-click anywhere on the monitor wall, point to **Monitor wall** (if you clicked a monitor), and then click **Load layout** on the shortcut menu.



Monitor wall shortcut menu

A layout browser appears on the displays associated with the current room.

- 3 Select the layout you wish to load from the list of available layouts for this room, and then click **OK**.

The selected layout appears on the room displays.

Configuring a Client PC

The client PC that you will use to communicate with the Kaleido-X16 multiviewer (via XAdmin and XEdit) and the multiviewer itself must have IP addresses within the same subnet. The following procedure applies to a typical Windows 7 system. For Windows XP, see [Changing an IP Address on Windows XP](#), on page 14.

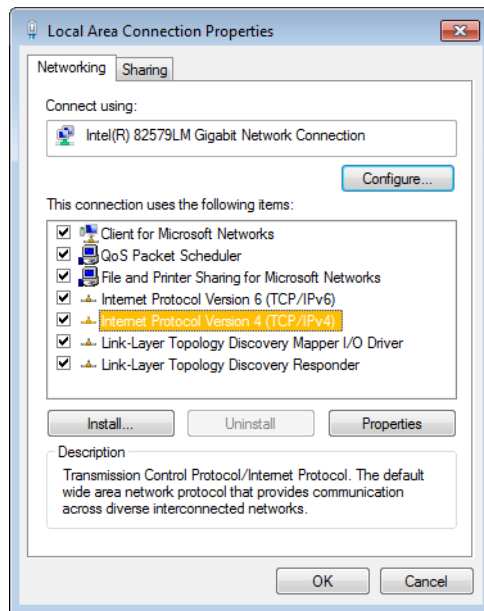
Changing an IP Address on Windows 7

To change the IP address of a client PC that has Windows 7

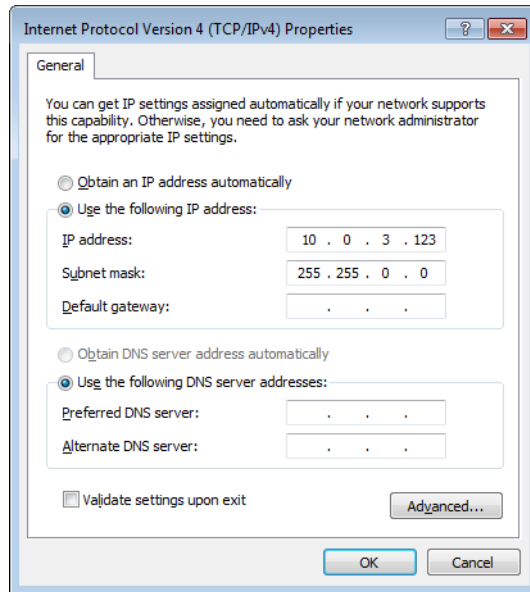
- 1 Click the **Start** button, and then click **Control Panel**. In the search box, type "adapter", and then, under **Network and Sharing Center**, click **View network connections**.

- 2 In **Network Connections**, right-click **Local Area Connection**, and then click **Properties**. If the system prompts you for an administrator password or confirmation, type the password or provide confirmation.

The **Local Area Connection Properties** window opens.



- 3 On the **Networking** tab, under **This connection uses the following items**, click **Internet Protocol Version 4 (TCP/IPv4)**, and then click **Properties**.
The **Internet Protocol Version 4 (TCP/IPv4) Properties** window opens.
- 4 On the **General** tab, click **Use the following IP address**.
- 5 Type an IP address in the same range as the default IP address of the multiviewer. For example, if the IP address of the multiviewer is 10.0.3.70, then the IP address of your client PC could be 10.0.3.123. If you are unsure, contact your network administrator.
- 6 Type a subnet mask in the same range as that of the multiviewer.



- 7 Click **OK**.
- 8 In **Local Area Connection Properties**, click **Close**.

Changing an IP Address on Windows XP

To change the IP address of a client PC that has Windows XP

- 1 On the **Start** menu, point to **Control Panel**, right-click **Network Connections**, and then click **Open** on the shortcut menu.
- 2 In **Network Connections**, right-click **Local Area Connection**, and then click **Properties** on the shortcut menu.
- 3 In **Local Area connection Properties**, select **Internet Protocol (TCP/IP)** from the list on the **General** tab, and then click **Properties**.
The **Internet Protocol (TCP/IP) Properties** window opens.
- 4 On the **General** tab, click **Use the following IP address**.
- 5 Type an IP address in the same range as the default IP address of the Kaleido-X16 frame. For example, if the IP address of the Kaleido-X16 frame is 10.0.3.70, then the IP address of your client PC could be 10.0.3.123. If you are unsure, contact your network administrator.
- 6 Type a subnet mask in the same range as that of the Kaleido-X16 frame.
- 7 Click **OK**.
- 8 In **Local Area Connection Properties**, click **Close**.

Step 3: XEdit Installation

XEdit is a client application used to create layouts for the monitor wall, and to configure your multiviewer system, from your PC or laptop. When the computer with XEdit is connected to the Kaleido-X16 through a TCP/IP network, you can use XEdit to modify layouts and settings directly on the multiviewer, or you can work locally on the computer and then export your changes to the multiviewer.

To install XEdit from your multiviewer's home page

- 1 From a workstation on the same subnet as the multiviewer, open a Web browser window and type the multiviewer's IP address in the address bar.

The Kaleido-X home page appears.

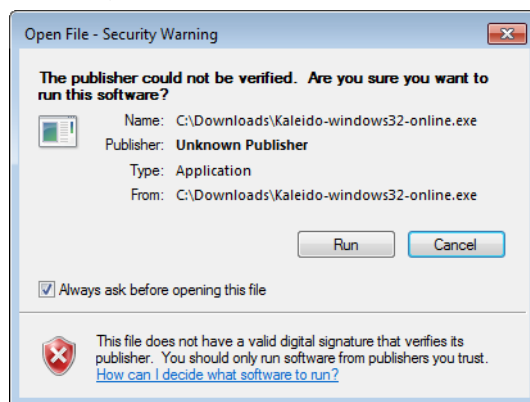


- 2 Click the **XEdit** button.

The browser prompts you to save an executable file to your hard drive (Kaleido-windows32-online.exe¹). This file is an online installer, which will download XEdit and other companion elements from your multiviewer, and install them. Some browsers may allow you to run the file directly. Depending on your browser's security features, warnings may appear, which you may safely dismiss.

- 3 Unless your browser let you run the file (and you chose to do so), navigate to the location where you saved the installer file and open it.

A security warning appears.




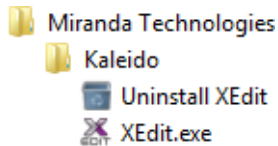
- 4 Click **Run**.

A window appears, showing the download and installation progress.

1. Installers for Linux or Mac OS X are not yet available.



At the end of the installation process, launcher icons () are added to your desktop and to the Start menu (under **All Programs**).



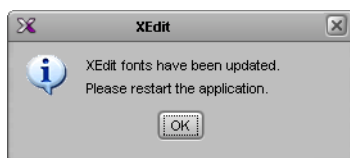
Once the installation has completed, the XEdit startup screen appears.



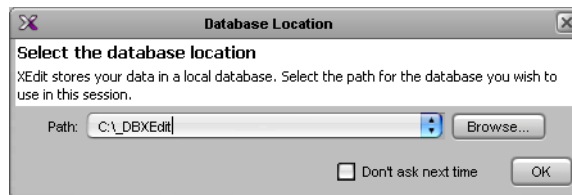
Depending on your Windows Firewall settings, a security alert may appear.

- Click **Allow access** to unblock the application.

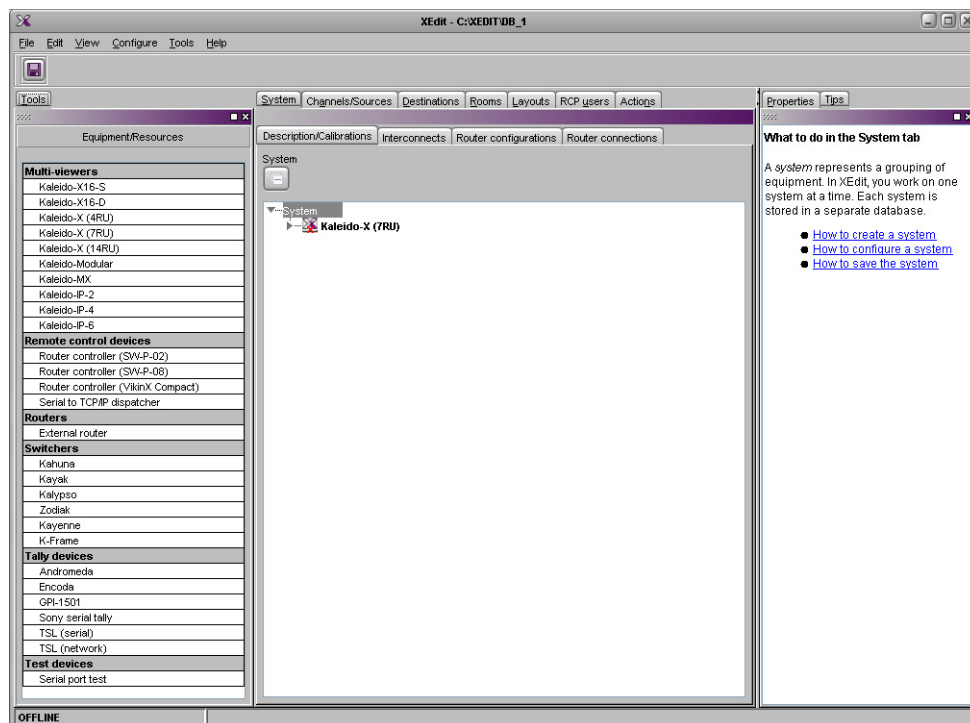
If XEdit cannot find all of the fonts it needs already on your PC or laptop, it downloads them from the multiviewer automatically, in which case a message will appear to confirm the font update, and instruct you to restart the application.




- Click **OK** to continue, and then open XEdit again, by using the launcher icon on your desktop (or on the Start menu).
- 5 When prompted to specify a database, choose one from the **Path** list, or click **Browse** to navigate to the database you wish to use as your local workspace, and then click **OK**.



- 6 Once the database has completed loading, XEdit's main application window appears.



Note: Once it has been installed from the multiviewer, XEdit remains on your PC or laptop, and can be launched from the  icon that was added to your desktop (see [page 16](#)). Whenever you install a new version of the Kaleido-X software on the multiviewer, the next time you open XEdit, your installed copy of the application will be automatically updated from the multiviewer.

For more information about calibrating your system, configuring rooms, creating layouts, and operating the monitor wall, refer to the *Kaleido-X User's Manual*, available on the DVD that shipped with your system, and from Miranda's support portal.



Miranda Technical Support

For technical assistance, please contact the Miranda Technical Support center nearest you:

Americas

Office hours: 9:00 a.m. – 9:00 p.m. (EST)
Telephone: 1-800-224-7882
Fax: +1 514 335 1614
E-mail: support@miranda.com

Asia

Office hours: 9:00 a.m. – 5:00 p.m. (GMT+8)
Telephone: +852 2539 6987
Fax: +852 2539 0804
E-mail: asiatech@miranda.com

Europe, Middle East, Africa, UK

Office hours: 9:00 a.m. – 6:00 p.m. (GMT)
Telephone: +44 118 952 3444
Fax: +44 118 952 3401
E-mail: eurotech@miranda.com

China

Telephone: +86 10 5873 1814
E-mail: asiatech@miranda.com

France

Office hours: 9:00 a.m. – 5:00 p.m. (GMT+1)
Telephone: +33 1 55 86 87 88
Fax: +33 1 55 86 00 29
E-mail: eurotech@miranda.com

EMERGENCY After Hours (Global)

Toll Free: 1-800-224-7882 (US and Canada)
Telephone: +1 514 333 1772

Corporate Head Office

Miranda Technologies
3499 Douglas-B.-Floreani, St-Laurent, Quebec, Canada H4S 2C6
Telephone: +1 514 333 1772
Fax: +1 514 333 9828
Web: www.miranda.com