

# Kalypso

VIDEO PRODUCTION CENTER  
Machine Control Interfaces

## Installation Instructions

SOFTWARE VERSION 12.0

071805605  
JANUARY 2006

*the most watched worldwide*

# CERTIFICATE

Number: 510057.001

The Quality System of:

## Thomson Broadcast & Media Solutions

**TBMS**  
400 Providence Mine Road  
Nevada City, CA 95945

**TBMS**  
Weiterstadt, Germany  
Brunnenweg 9  
D-64331 Weiterstadt, Germany

**TBMS**  
15655 SW Greystone Ct.  
Beaverton, OR 97006

**TBMS**  
Nederland B.V.  
4800 RP BREDA  
The Netherlands

**TBMS/Nextream**  
Rennes, France  
Rue du Clos Courtel  
Cesson-Sevigne, Cedex  
France

**TBMS**  
17 rue du Petit Albi-BP 8244  
95801 Cergy Pontoise  
Cergy, France

**TBMS**  
10 Presidential Way, 3<sup>rd</sup> Floor, Suite 300  
Woburn, MA 08101

**TBMS**  
2300 South Decker Lake Blvd.  
Salt Lake City, UT 84119

**TBMS - PCB**  
Rennes, France  
Rue du Clos Courtel  
Cesson-Sevigne, Cedex  
France

**TBMS/Nextream**  
Technopole Brest Iroise  
CS 73808  
29238 Brest Cedex 3  
France

Including its implementation, meets the requirements of the standard:

## ISO 9001:2000

Scope: The design, manufacture and support of video hardware and software products and related systems.

This Certificate is valid until:	June 14, 2006
Revision Date:	September 9, 2003
Renewal Date:	June 14, 2003
Issued for the first time:	June 14, 2000



H. Pierre Sallé  
President  
KEMA-Registered Quality, Inc.

The method of operation for quality certification is defined in the KRQ General Terms and Conditions for Quality Certification. Integral publication of this certificate and adjoining reports is allowed.

# Kalypso

VIDEO PRODUCTION CENTER  
Machine Control Interfaces

## Installation Instructions

SOFTWARE VERSION 12.0

071805605  
JANUARY 2006

*the most watched worldwide*

# Contacting Grass Valley

Region	Voice	Fax	Address	Web Site
North America	(800) 547-8949 Support: 530-478-4148	Sales: (530) 478-3347 Support: (530) 478-3181	Grass Valley P.O. Box 599000 Nevada City, CA 95959-7900 USA	www.thomsongrassvalley.com
Pacific Operations	+852-2585-6688 Support: 852-2585-6579	+852-2802-2996		
U.K., Asia, Middle East	+44 1753 218 777	+44 1753 218 757		
France	+33 1 45 29 73 00			
Germany, Europe	+49 6150 104 782	+49 6150 104 223		

Copyright © Grass Valley. All rights reserved.

## Grass Valley Web Site

The [www.thomsongrassvalley.com](http://www.thomsongrassvalley.com) web site offers the following:

**Online User Documentation** — Current versions of product catalogs, brochures, data sheets, ordering guides, planning guides, manuals, and release notes in .pdf format can be downloaded.

**FAQ Database** — Solutions to problems and troubleshooting efforts can be found by searching our Frequently Asked Questions (FAQ) database.

**Software Downloads** — Software updates, drivers, and patches can be downloaded.

# Contents

<b>Section 1 — Machine Control Overview</b> .....	9
Introduction .....	9
Encore Control System Overview .....	9
Machine Control Support Software Installation .....	11
What You Should Install .....	11
Install Machine Control Support Software .....	12
Confirm Machine Control Support Installation .....	16
Add User to Data Base .....	18
Encore IP Address Change Procedure .....	23
Saving Encore Machine Control Configurations .....	25
Backup Procedure .....	25
Restore Procedure .....	26
Restore After Drive Replacement .....	26
Enhanced Menu Panel Restore .....	26
Original Menu Panel Restore .....	26
Uninstall Old Omnibus User Interface .....	27
Reverting to Earlier Machine Control Software .....	27
<b>Section 2 — Profile Interface</b> .....	29
Introduction .....	29
Overall Profile Configuration Procedure .....	30
Profile Installation and Configuration .....	31
Default Profile IP Address .....	31
Unique Profile IP Addresses .....	31
Connect Profile Ethernet to Kalypso Switch .....	31
Uninstall Old VDRCS .....	31
Install VDRCS from CD .....	32
Install VDRCS over Network .....	38
Edit Batch File for Fibre Channel or PLS 200 .....	39
Connect Profile Video Outputs to Kalypso Inputs .....	40
Kalypso Installation and Configuration .....	40
Install Encore Software .....	40
Create a New Profile Device Definition .....	41
Assign Profile Devices to Kalypso Sources .....	45
Map Each Source to a Kalypso Panel Button .....	48
Save Kalypso Configuration Files .....	48
Encore Configuration .....	49
Configure Encore Software for Profile .....	49
Access OUI and Log In as SYS .....	49
Name Profile Device and Set Device Type .....	54
Select Port and Set Profile API .....	54
Set Channel Number and ID, and Enable .....	54
Save Configuration .....	55
Test Lower Level Control .....	55
Test Configuration and Operation .....	57

Confirm Device Channel Configuration . . . . . 57  
 Test Playback from OUI. . . . . 59  
 Test Kalypso Profile Interface Operation . . . . . 61

**Section 3 — VTR Interface** . . . . . 63

Introduction. . . . . 63  
 Encore VTR Interface Components . . . . . 63  
 Required Materials . . . . . 63  
 Overall VTR Configuration Procedure . . . . . 65  
 Serial Engine Installation . . . . . 66  
     Install Serial Engine Hardware. . . . . 66  
     Configure Serial Engine to Defaults. . . . . 66  
     Change Serial Engine Name and IP Address Settings . . . . . 67  
     Connect Serial Engine to Network. . . . . 68  
 Kalypso Installation and Configuration . . . . . 69  
     Install Encore Software . . . . . 69  
     Create a New VTR Device Definition . . . . . 70  
     Assign VTR Devices to Kalypso Sources. . . . . 74  
     Map Each Source to a Kalypso Panel Button . . . . . 77  
     Save Kalypso Configuration Files . . . . . 77  
 Encore Configuration. . . . . 78  
     Access OUI and Log In . . . . . 79  
         Access OUI and Log In as SYS . . . . . 79  
     Add Application for VTR Control . . . . . 82  
     Define Engine the Application will Use . . . . . 84  
     Add Application to This Engine. . . . . 85  
     Identify VTR . . . . . 88  
         Save Configuration . . . . . 90  
 Test Configuration and Operation. . . . . 91  
     Test VTR OUI Operation . . . . . 91  
     Test Kalypso VTR Interface Operation . . . . . 92

**Section 4 — Using the Encore Operational User Interface (OUI)** . . . . . 93

Introduction. . . . . 93  
 Common Display Features . . . . . 94  
     Encore Desktop . . . . . 94  
     Buttons . . . . . 96  
     Icons and Windows . . . . . 96  
     Messages . . . . . 99  
         Message Window (with options) . . . . . 99  
         Message Window (without options) . . . . . 100  
         Selecting options . . . . . 100  
 Procedures. . . . . 100  
     Logging onto the OUI . . . . . 100  
     Loading an Application . . . . . 102  
         Loading a Local Application . . . . . 102  
         Loading a Remote Application . . . . . 103  
         Requesting an Application from Another User . . . . . 103  
     Dropping an Application. . . . . 104  
     OUI Station Status Window . . . . . 105  
         Ancillary Options . . . . . 106  
         Shortcut Key Editor. . . . . 107

- Logging off the OUI ..... 109
- Local Machine Control Panel (LMCP) ..... 110
  - Opening the LMCP ..... 112
  - Clip Area ..... 112
    - Creating a New Clip on a Video Disk Server ..... 112
    - Creating a New Clip on a VTR ..... 112
    - Loading a Clip ..... 112
    - Modifying Clips ..... 113
    - Saving a Clip ..... 113
  - Device Selection and Control ..... 113
    - Setting Options ..... 114
    - Automatic Control ..... 114
    - Time Base Correction Panel ..... 115
    - Using the Device Control Area ..... 116
    - Transport Control Buttons ..... 117
  - Cue Points Area ..... 118
  - Using the Cueing Control Buttons ..... 118
  - Ancillary Area ..... 119
    - Options button ..... 119
  - Exiting the Local Machine Control Panel ..... 120
    - Memory of the LMCP ..... 120
    - Remote control of the LMCP ..... 120
- Filer-Fax ..... 121
  - Filer Mode Vs. List Mode ..... 121
  - Filer-Fax Overview ..... 121
  - Opening Filer-Fax ..... 122
  - Multi-Domain Networks ..... 122
  - File-Maintenance Mode ..... 122
    - Filtering ..... 122
      - Automatic Filters ..... 123
      - Filter and Tag-Cats Modes ..... 124
      - Logic Buttons ..... 124
  - Save Mode ..... 128
  - Load Mode ..... 129
  - Filer-Fax Memory ..... 130
- Index** ..... 131





# *Machine Control Overview*

## **Introduction**

The Kalypso system uses special interfaces for Ethernet based machine control. These interfaces reside outside the Kalypso system, on the controlled devices themselves. Different installation procedures are used for the various interfaces. After the interfaces are installed, Encore control system software residing either on the Kalypso system or elsewhere in your facility will need to be configured to recognize the devices that will be used with the Kalypso system's machine control capabilities.

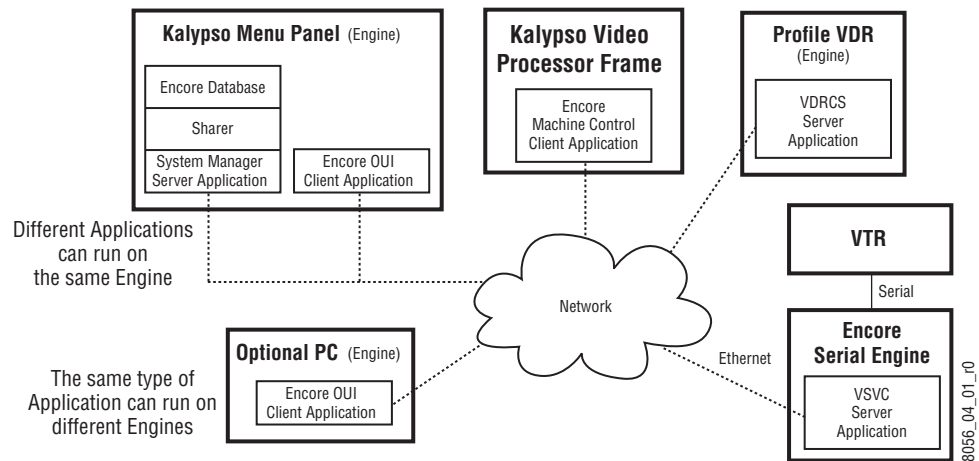
This document covers the initial installation of machine control interfaces (software and/or hardware) on the Kalypso system and on external devices, and also describes the configuration required to support the devices. It also gives a brief description of the Encore Operator User interface (OUI).

## **Encore Control System Overview**

**Note** An Encore control system is modular and scalable. Encore system capabilities range from the simple machine control covered in this manual, to complete facility wide resource management, including routing, automation, and on-air playback. For information about Encore system features not covered in this manual, see the Encore documentation provided with those products.

The Encore control system has a distributed, client/server architecture, using standard Ethernet communications protocols ([Figure 1](#)). The Encore system consists of client, server, and central core components. The central core (Sharer, Database, System Manager) is required since all other components rely on its existence. An Encore OUI is also required since it is used to configure the central core.

Figure 1. Encore System Diagram



Terms associated with an Encore system include:

**Client** — A generic term for a software component that makes use of a service provided by a server. For Kalypso systems, Encore client software is included in the core Kalypso software installed on the Video Processor frame, enabling machine control capabilities (once the interfaces are installed and configured).

**Server** — A generic term for a software component that provides a service to a client. As a machine control example, the VDRCS software residing on a Profile VDR acts as a server, because it provides a service (clip loading and playback) to the client (the Kalypso system software).

**System Manager** — The software application used for overall system management functions, including logon, access control, and configuration. On a Kalypso system it typically resides on the Menu panel, but it may reside on any PC on the network.

**Database** — A data set containing configuration information used by the various Encore system components.

**Sharer** — An Encore software component responsible for distributing the database configuration data to the various applications as they boot up. The Sharer also acts as a coordinator between the clients and servers.

**OUI** — The Encore user interface, a Windows based menu system. This is considered a client for machine control and other functions.

**Engine** — A generic term for a hardware component with specific capabilities. For example, a Profile VDR is considered an engine, as is the Menu panel or PC on which the OUI application runs.

**Application** — A generic term for a software component that can be loaded and run on an engine. For example, the VDRCS server application is installed on the Profile VDR engine hardware, while the OUI client application can be installed on the Kalypso Menu panel engine hardware.

# Machine Control Support Software Installation

## What You Should Install

Encore Control System machine control software (formerly called OmniBus software), used for external Profile and VTR device control via the Kalypso system Machine Control subpanel, is included on the Kalypso Software CD.

Sharer, System Manager, and Encore Operator User Interface (OUI) software can be installed on a Kalypso system using the Kalypso Install program. A Sharer and System Manager must be installed somewhere in your facility to control a Profile or VTR with the Kalypso system, but only one instance should be installed. Multiple versions of the Encore OUI can safely reside on the network.

The Base Install includes a Port Mapper application, used to manage system ports. This is installed regardless of which options are selected.

A default database is also included on the Kalypso Software CD, containing default IP addresses of Kalypso system and Profile devices. This database is to be installed only one time, as a baseline to begin configuration, and should not be reloaded onto an existing operating system. Default IP addresses will work if the Kalypso system and all the machine control components reside on an isolated network. If the Kalypso system is interconnected with a facility's local area network, however, the IP addresses in the Encore data base will probably need to be changed.

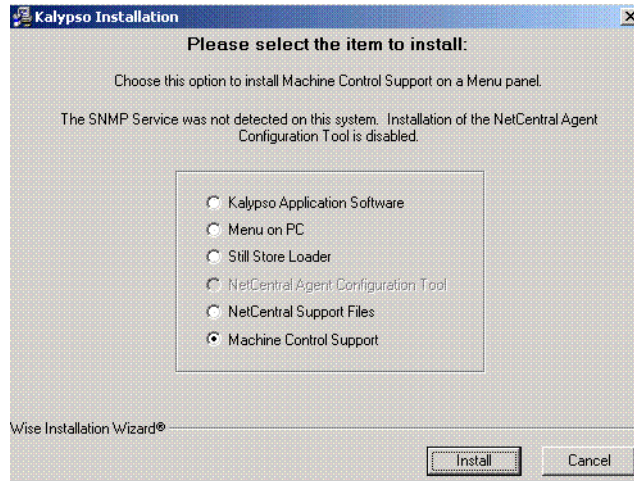
The Sharer, Database, and all the Encore/Omnibus servers must reside on the same subnet. The Encore system uses broadcast messages that do not propagate through routers.

In facilities where more than one Kalypso Menu panel exists or where multiple Kalypso systems access the same devices, it is best to install the Encore central core on a separate PC rather than on one of the Kalypso Menu panels. Otherwise, shutting down the Kalypso Menu panel with the Encore database may stop a Kalypso system from controlling the machines. The installation procedure on a PC is the same as that used on a Kalypso Menu panel (just insert the CD and follow the directions). If the core components are not installed on a Kalypso Menu panel, an Encore OUI should also be installed with the central core. This provides configuration access independent of a Kalypso Menu panel, which might be turned off or unavailable.

## Install Machine Control Support Software

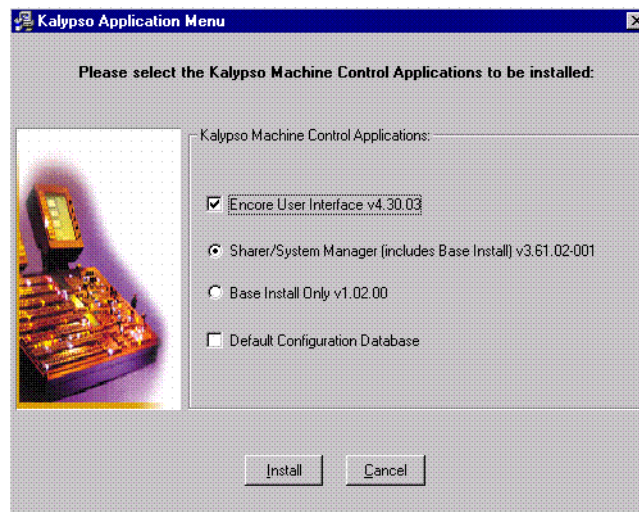
1. Exit any open applications.
2. Insert the Kalypso Software CD. The following screen appears (Figure 2).

Figure 2. Kalypso Install Screen 1



3. Select the **Machine Control Support** option, and then touch **Install**. The Kalypso Application Menu appears (Figure 3).

Figure 3. Machine Control Installation Options Menu



4. Select the appropriate installation options, as described in the following bulleted paragraphs.

**CAUTION** Only one Sharer and System Manager is to be installed on a network.

- If you are installing machine control on your Kalypso system for the first time and do not have an OmniBus facility management system on the network, select **Encore User Interface** and **Sharer/System Manager** and **Default Configuration Data Base**. Additional OmniBus or Encore system configuration steps will also be required.
- If you are updating a Kalypso system already running a machine control option and do not have an OmniBus facility management system elsewhere on the network, select **Encore User Interface** and **Sharer/System Manager**. The existing configuration will be retained.

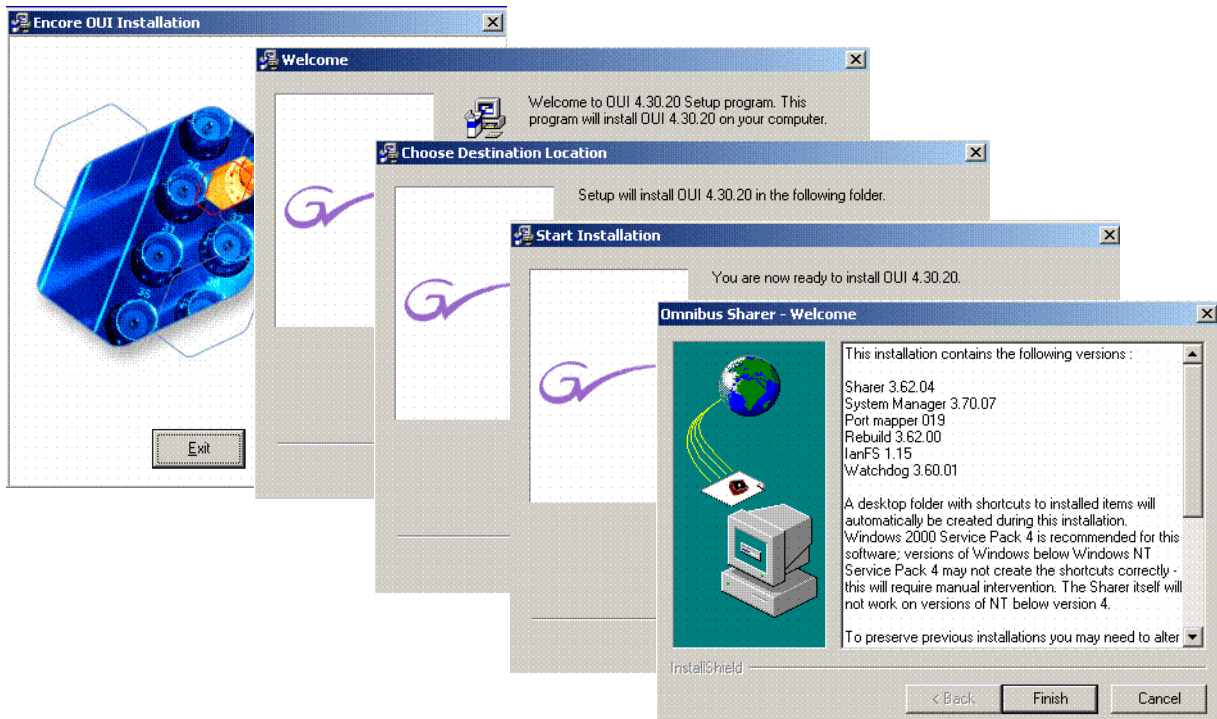
**CAUTION** If updating existing Machine Control software on a Kalypso system, do NOT choose the Default Configuration Database option, as it will overwrite the existing configuration information.

- If you are updating a Kalypso system already running a machine control option and have an Omnibus facility management system running elsewhere on the network, select **Encore User Interface** and **Base Install Only**. The existing configuration will be retained.

**CAUTION** If an existing OmniBus facility management system or an Encore control system exists on the network, do NOT choose the Default Configuration Database option. If it is installed to the same location as the existing database, the existing configuration information will be overwritten, disabling the OmniBus or Encore system.

5. After making your selections, touch **Install**. During the subsequent installation process several prompt and selection screens appear in sequence. Different screens are displayed ([Figure 4](#)), depending on the options originally chosen above. Carefully follow the on-screen directions, and always use the default selection when choices are offered.

Figure 4. Machine Control Installation Screens



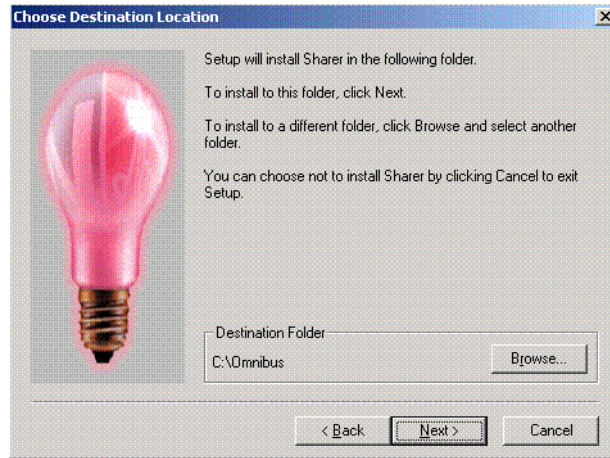
6. If you selected the **Sharer/System Manager** option, you may need to click the **Sharer Setup** tab at the bottom of the screen (Figure 5) to bring up the next menu.

Figure 5. Sharer Setup Tab



7. The Choose Destination Location screen appears next (Figure 6). Choose the default.

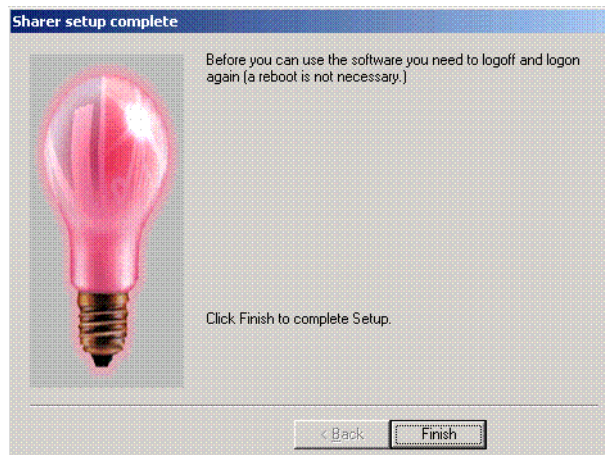
Figure 6. Sharer Choose Destination Location Screen



8. If you installed the Sharer, after you complete the installation you will need to log off and log on before you will be able to use the software, as prompted on the following screen (Figure 7).

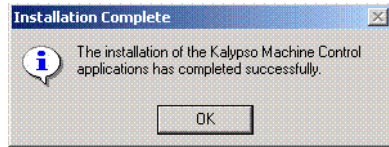
**Note** Do NOT log off at this time. You must first complete the Machine Control Support Software installation. You will logoff later at Step 11.

Figure 7. Sharer Install Logoff Message



9. Touch the **Finish** button. The following prompt will appear (Figure 8). Touch **OK**.

Figure 8. Completed Installation Prompt



10. If you upgraded existing machine control software and did NOT install the default database, you must add a KAL user to the data base (see [Add User to Data Base on page 18](#)). This is not necessary if the default database was installed.
11. With the KAL user in the database, log off and back onto the computer.

## Confirm Machine Control Support Installation

12. On startup the computer will load the Kalypso Menu application, as usual, but the following applications also load:
  - Encore User Interface
  - SysMan3
  - Portmapper
  - Sharer (to exit Sharer you must first exit WatchDog)
  - WatchDog (automatically reloads Sharer)

If you minimize the Kalypso Menu application, tabs for these applications will appear on the Windows task bar at the bottom of the screen.



13. You will also be able to touch the **Facility Manager** button on the Kalypso Menu panel to go directly to a logged on Encore User Interface screen (Figure 9). This button is active after the entire Kalypso system has completely booted up.

Figure 9.



**Note** The KAL logon has permissions for operational control only. To change configuration settings you must log on as SYS.

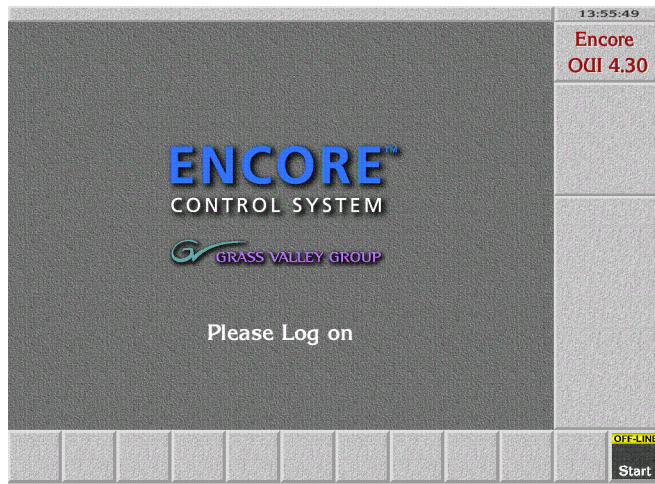
14. You have completed the Machine Control Support software installation. You can now go to Section 2 for Profile installation, or Section 3 for VTR installation.

## Add User to Data Base

If the machine control installation was an upgrade that did NOT include installation of the default database, the user KAL must be added to the data base. This permits automatic logon to the Encore User Interface when the Menu panel boots up.

1. Touch the Facility Manager button on the Menu panel to bring up the Encore User Interface (Figure 10). The button on the lower right of the menu is labeled **Start** when not logged on.

Figure 10.



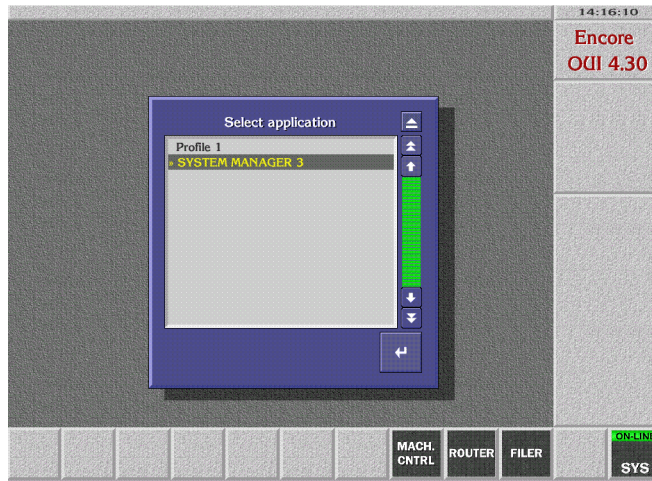
2. Click on the **Start** button and log on to the Encore GUI as user SYS (Figure 11). **SYS** will appear in place of **Start** on the lower right button.

Figure 11.



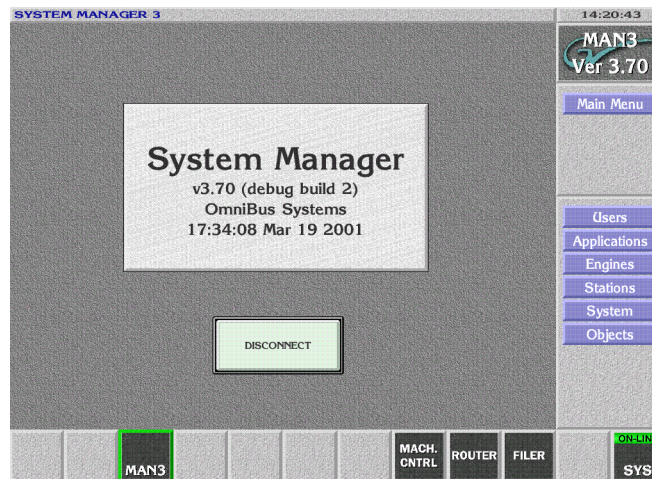
3. Close the Welcome window by clicking the button at the upper right corner of its window.
4. Click on an empty box on the task bar at the bottom of the screen. A list of applications appears (Figure 12).

Figure 12.



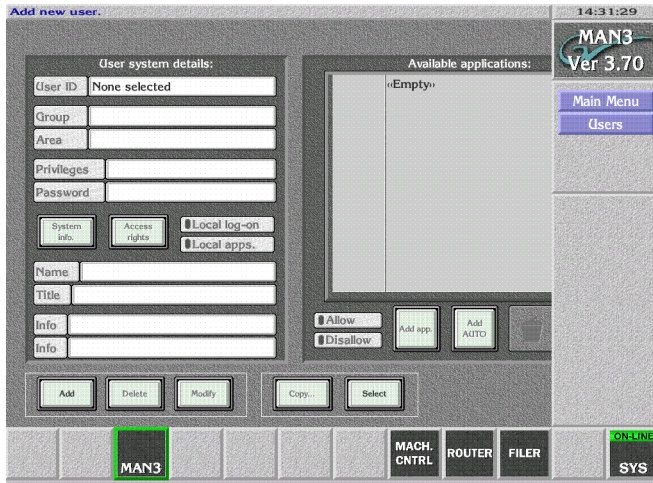
5. Select the **SYSTEM MANAGER 3** application and click the Return button located at the lower right corner of the window. The System Manager application screen appears (Figure 13).

Figure 13.



6. Select **Users** from the menu. The User System Details screen appears (Figure 14).

Figure 14.



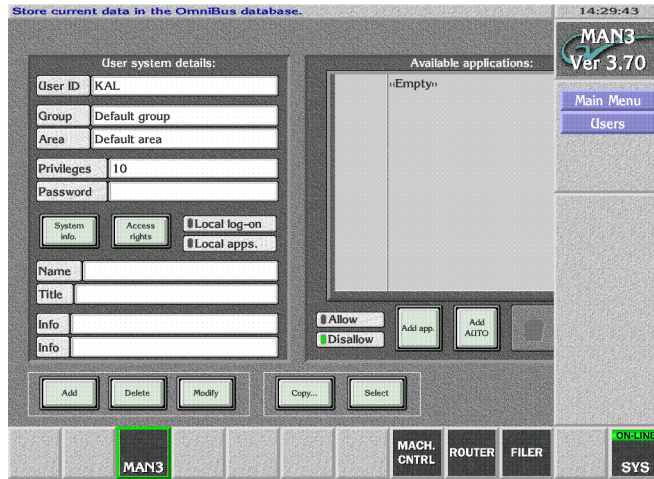
7. Select **Add** in the lower left corner of the screen. A prompt to Enter New User ID appears. Enter **KAL** (Figure 15).

Figure 15.



8. The User System Details screen re-appears. Click on the **Modify** button (Figure 16).

Figure 16.



9. Click on the **SYS** button on the lower right and select **YES** to log off the Encore User Interface (Figure 17).

Figure 17.



10. Click on the **Start** button and log on to the Encore GUI as user KAL to test that the new user was added. The name **KAL** replaces **Start** on the lower right button (Figure 18).

Figure 18.



**Note** The KAL logon has permissions for operational control only. To change configuration settings you must log on as SYS.

11. If you are doing an initial Machine Control Support Software installation, go back to [Confirm Machine Control Support Installation on page 16](#).

# Encore IP Address Change Procedure

The default Encore database installed from the Kalypso software CD contains default IP addresses of the Kalypso system components and one Profile VDR. These default addresses may need to be changed to support larger installations. Changing these addresses when Encore has been installed on the Kalypso Menu Processor involves the following steps:

- Run the Menu Processor and Encore under the old (default) address, create copies, and change their IP addresses,
- Change the Menu Processor's IP address to the new IP address,
- Restart Encore and delete the old IP addresses.

The following example procedure shows how to change from the default addresses to the following new addresses ([Table 1](#)).

Table 1. IP Address Changes

Device	Default Address	New Address
Kalypso Menu	192.168.0.25	192.65.12.41
Kalypso Frame	192.168.0.20	192.65.12.21
Profile	192.168.0.10	192.65.12.58

You need a keyboard attached to the Main panel to perform this procedure.

## To Modify Default Encore Database IP Addresses:

1. With Encore running (Sharer, System Manager and OUI), log on and enter System Manager 3 application, User **SYS**, no password.
2. Engines. Select. Should see address **192.168.0.10** (the profile) and **192.168.0.25** (menu processor as host for system manager).
3. Build a copy of Profile if you want to change its address:
  - a. **Add**, IP Address: 192 . 65 . 12 . 58 (for this example, use your profile IP address).
  - b. Name: Profile 1. (The names can be duplicated here, we are going to delete the old names).
  - c. **Copy**, at popup, select **192.168.0.10** (the old profile), **Modify**
4. Build a copy of System Manager to run at the new IP address:
  - a. **Add**, IP Address: 192 . 65 . 12 . 41 (the new IP address of the Kalypso menu processor).
  - b. Name: Kalypso Menu
  - c. **Copy**, at popup, select **192.168.0.25** (the old menu processor default IP address), **Modify**

5. Build a copy of the OUI to run at the new IP address.
    - a. **Main Menu, Stations, Select.** Should see addresses **192.168.0.20** (default frame for the frame client) and **192.168.0.25** (default menu processor for the OUI).
    - b. **Add, IP Address:** 192 . 65 . 12 . 41 (your new IP address for the menu processor).
    - c. Name: Kalypso Menu.
    - d. **Copy**, at popup, select **192.168.0.25** (old menu address for OUI), **Modify**
  6. Create a new Frame Client for the new Frame IP address:
    - a. **Add, IP Address:** 192 . 65 . 12 . 21 (the new IP address of the Kalypso Frame)
    - b. Name: Kalypso Frame
    - c. **Copy**, at popup, select **192.168.0.20** (the old default Kalypso frame address), **Modify**
- You should now have four entries in the stations/select popup: 192.168.0.20 (old frame address), 192.65.12.21 (new frame address), 192.168.0.25 (old menu processor address) and 192.168.12.41 (new menu processor address). There should also be four entries in the engines/select popup: 192.168.0.10 (old profile address), 192.65.12.58 (new profile address), 192.168.0.25 (old menu processor address) and 192.168.12.41 (new menu processor address).
7. Close Encore: stop OUI, sysman3 and Sharer.
  8. Change IP address on the menu processor: my computer/Network/TCP-IP/Properties. Enter 192 . 65 . 12 . 41. It is not necessary to reboot.
  9. Restart Encore: start Sharer, Sysman3, and OUI.
  10. Logon to Encore (user SYS, no password), enter application SYSTEM MANAGER3.
  11. Delete the engines and stations associated with the old IP addresses:
    - a. **Engines, Select**
    - b. Pick **192.168.0.10** (old Profile engine), **Delete**
    - c. Pick **192.168.0.25** (old Kalypso menu as host for manager engine), **Delete**
    - d. **Main Menu, Stations, Select**
    - e. Pick **192.168.0.20** (old Kalypso frame host for frame client). **Delete**
    - f. Pick **192.168.0.25** (old Kalypso menu host for OUI). **Delete**

Encore should now be fully functional with the new addresses.



## **Saving Encore Machine Control Configurations**

Machine Control configurations are separate from the Kalypso Engineering and Daily setups, and so are not backed up when those Kalypso setup files are saved to disk. You can back up your current Machine Control configuration to disk with the following procedure. This should be done when you first install the Machine Control software and whenever you change its configuration to avoid having to manually reconfigure the system if the files are damaged or lost or a drive needs to be replaced.

**Note** This procedure is for systems where the Sharer application is installed on the Kalypso Menu panel. Do not use this procedure if you are running Sharer on a separate PC as part of an Encore concerto Routing system.

### **Backup Procedure**

This procedure backs up the Encore Machine Control data base and configuration files. It also turns off logging and deletes log files, which can grow large in size and eventually fill the available disk space.

1. Insert a Zip disk on which you wish to backup the files into the Kalypso Zip drive.
2. On the Kalypso Menu panel, minimize the Kalypso Menu application if necessary, then open Windows Explorer and go to the **C: OMN** directory.
3. Turn off logging and delete any log files:
  - a. Open the **SharerOptions.ini** file.
  - b. Go to the heading **[Logging]**.
  - c. Set **RecordNetMessage = OFF**
  - d. Set **RecordRawCBNP = OFF**
  - e. Close the file and save the changes.
  - f. Open the **Omn/Logs** directory and delete all the files in that directory, leaving it empty.
4. Using Explorer, drag and drop the **Omn** folder to the Kalypso Zip drive. You may want to first create a directory named with the date to save the file in so you can store multiple configurations onto the same Zip disk.
5. Remove the Zip disk, label it, and store it in a safe place.

## Restore Procedure

To restore the saved Machine Control configuration files, use Explorer to drag the **Omn** folder from the Zip disk to the C: directory on the Menu panel, overwriting any existing folder with that name.

## Restore After Drive Replacement

If you replace a Kalypso Enhanced Menu panel, or replace the NT drive of an Original Menu panel, you will need to reinstall the Machine Control software, and then restore the configuration file.

### Enhanced Menu Panel Restore

1. Close all operations on the Menu panel.
2. Insert the Kalypso Software CD and follow the standard procedure to install the Machine Control Support software.
3. Insert the Zip disk that contains the backup Machine Control configuration files.
4. Use Explorer to drag the **Omn** folder from the Zip disk to the C: directory on the Menu panel, overwriting any existing folder with that name.
5. Restart Windows NT.

### Original Menu Panel Restore

1. Install the Kalypso Menu panel software using the standard procedure.
2. Install the Machine Control Support software using the standard procedure.
3. Use Explorer to drag the **Omn** folder from the Zip disk to the C: directory on the Menu panel, overwriting any existing folder with that name.
4. Restart the Windows OS.

## Uninstall Old Omnibus User Interface

If the Kalypso system has previously been running an earlier version of machine control, you can remove the older OmniBus User Interface if you wish. While leaving the older OUI installed will not cause problems when running the Encore User Interface, removing it prevents accidentally loading the older version, which could cause confusion.

1. Go to Start\Settings\Control Panel\Add/Remove programs and uninstall **OUI**.
2. If running Windows NT, delete the **wincui** icon from the desktop. Windows 2000 should remove the icon automatically.

## Reverting to Earlier Machine Control Software

If you wish to revert to an earlier version of machine control software, you must uninstall the newer machine control version before installing the older version.

1. Exit any open applications. You will need to exit Watchdog before you can exit the Sharer.
2. Go to Start\Settings\Control Panel\Add/Remove Programs.
3. Uninstall the following items:
  - **Kalypso Machine Control**
  - **Omnibus Sharer**, or **Base Install** (which of these items is present depends on the installation options selected)
  - **OUI**

**Note** The machine control database cannot be removed with Add Remove. This is intentional to prevent accidental loss of configuration data. If a new default data base is installed, it will overwrite the existing files located in C:\Omn.

4. Now install the older machine control software (OmniBus) using the older Kalypso Software CD.



# *Profile Interface*

## **Introduction**

The Profile interface software consists of:

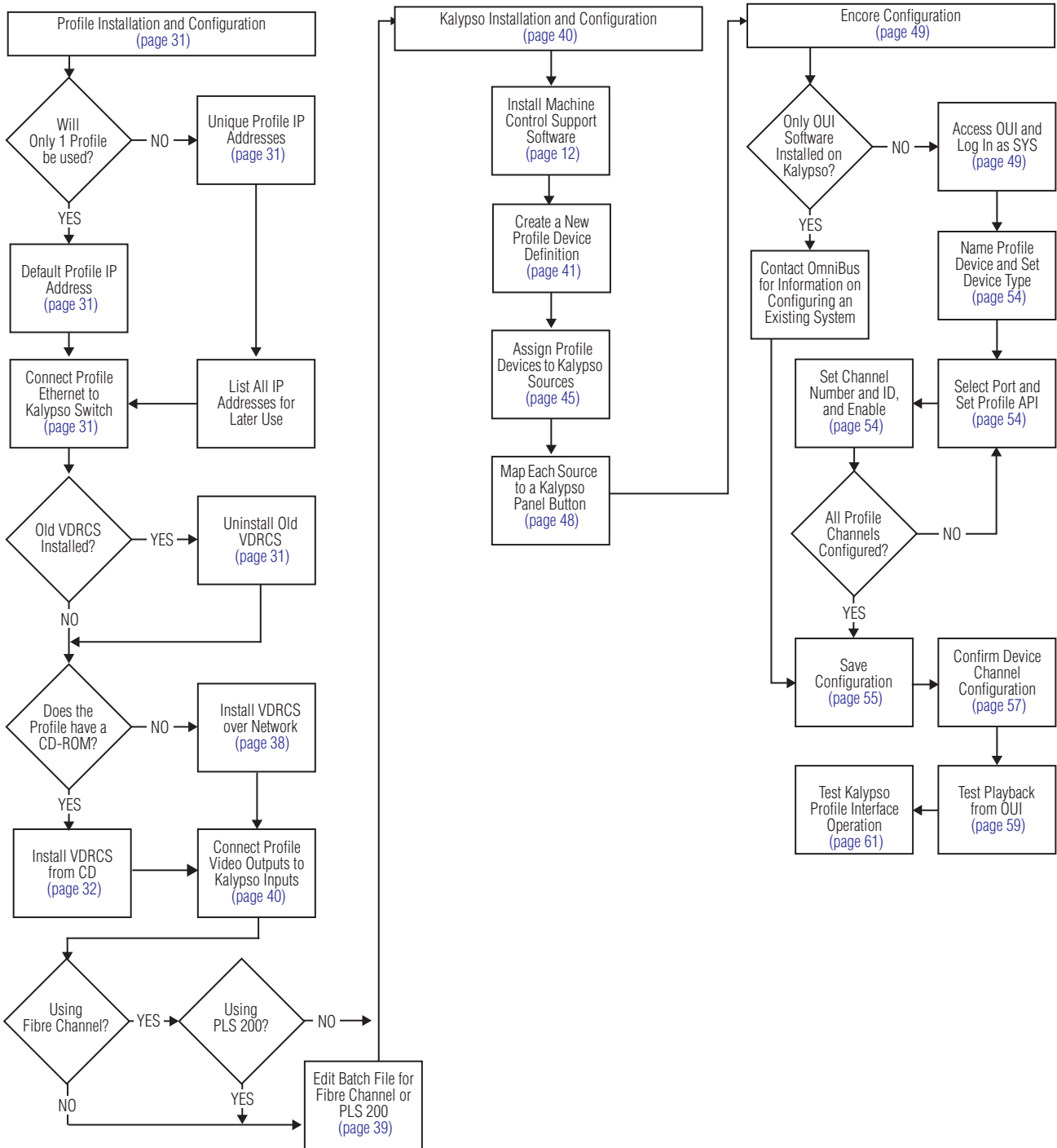
- a VDRCS application (available as an option installed on the Profile itself),
- a Sharer and a System Manager application, responsible for overseeing the entire Encore control system network and to configure users and their access to the network (provided on the Kalypso Software CD), and
- a Port Mapper application (Base Install), used to manage system networking ports (provided on the Kalypso Software CD), and
- an Encore User Interface application (provided on the Kalypso Software CD).

A Sharer and System Manager must be installed somewhere in your facility to use Kalypso system machine control. However, only one instance should be running on the network.

# Overall Profile Configuration Procedure

Interfacing a Profile VDR with the Kalypso system involves configuring the Profile VDR itself, the Encore software, and the Kalypso system (Figure 19). All three procedures must be completed in the order displayed.

Figure 19. Profile Interface Flow Diagram



# Profile Installation and Configuration

A Profile VDR is controlled from the Kalypso system using the KAL-IF-PROFILE option, which includes VDRCS software.

## Default Profile IP Address

If only one Profile is involved, use its default IP address.

## Unique Profile IP Addresses

If more than one Profile will be used, give each Profile a unique IP address. Profile IP Addresses are changed using standard Windows methods. See the *Profile Network Manual* for specific information.

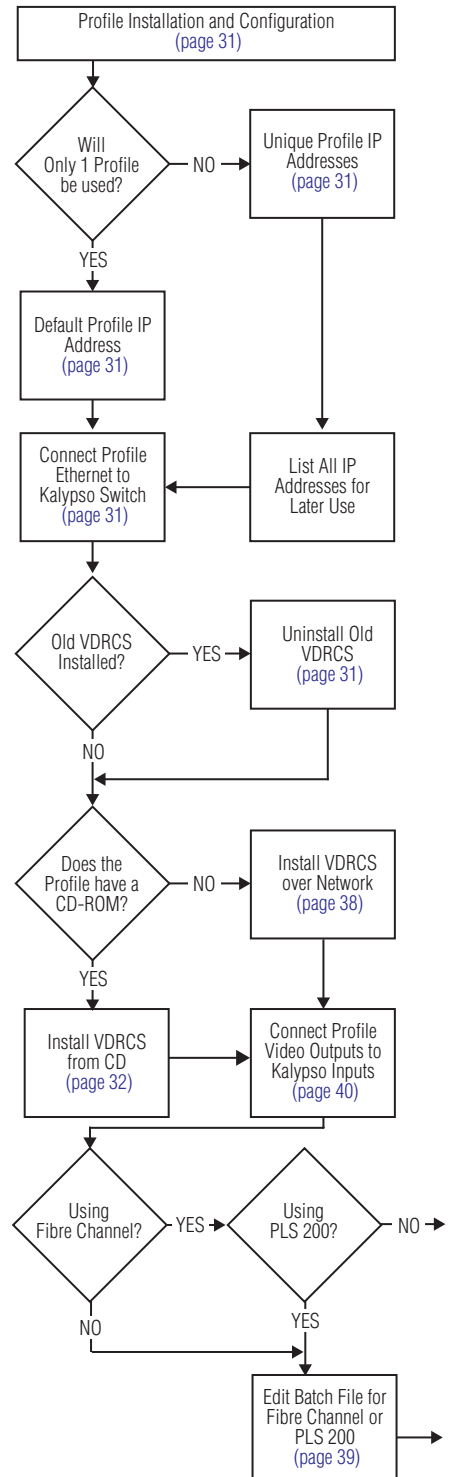
## Connect Profile Ethernet to Kalypso Switch

The Kalypso system uses an Ethernet Switch for system communications. Connect the Profile VDR Ethernet port to the Kalypso switch.

## Uninstall Old VDRCS

If an older version of VDRCS resides on the Profile, it should be removed.

1. Exit all applications on the Profile.
2. Go to Start\Settings\Control Panel\Add/Remove programs and uninstall **Omni Base Setup** and **VDRCS** following all prompts.
3. Using Explorer, go to the C: drive and delete the **Omnibus** folder.
4. Reboot the Profile.

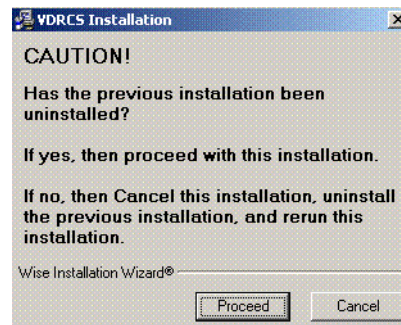


## Install VDRCS from CD

If the Profile has a CD-ROM drive, install the software using that drive.

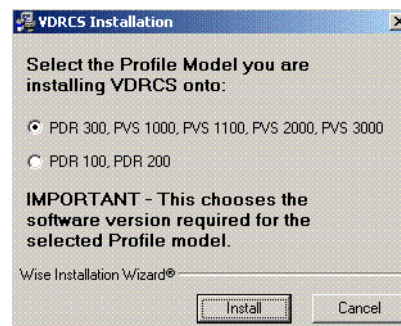
1. Exit any open applications.
2. Insert the **KAL-IF-PROFILE** CD into the CD-ROM drive of the Profile. The installer program will launch automatically and a caution message is posted reminding you to uninstall any previous instance of VDRCS, if present (Figure 20). This is required to prevent installation problems.

Figure 20.



3. Click on **Proceed** (or Cancel and do the uninstall, described on page 31). A Profile model selection screen is displayed (Figure 21).

Figure 21.



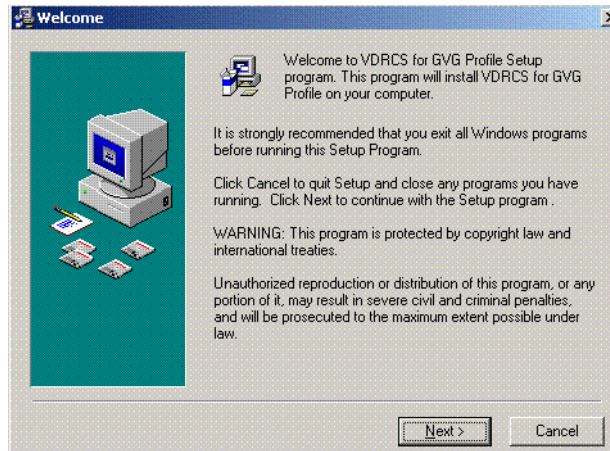
4. Select the Profile model you are installing onto and click **Install**. This is important because it chooses the software version required for that Profile model.

**Note** Later in the procedure you will be asked again for the Profile model, but that later choice does NOT select different software. It only identifies the target of the install. You must select the correct Profile model both times.



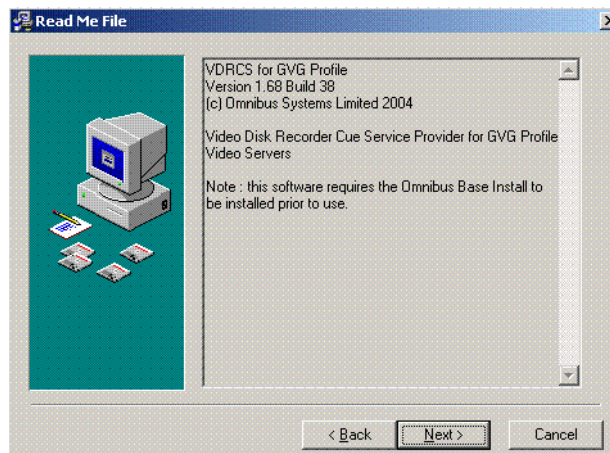
5. A Welcome window appears (Figure 22).

Figure 22.



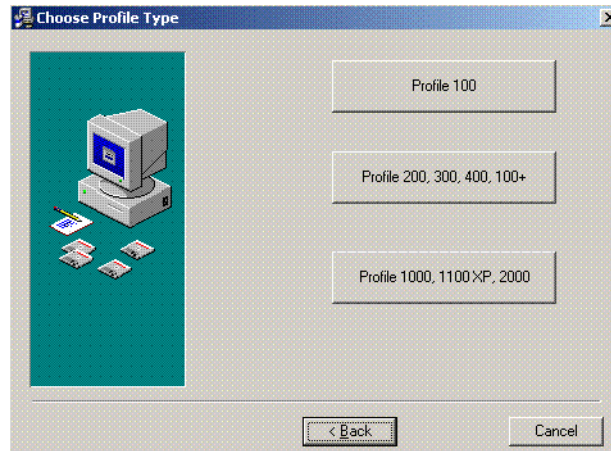
6. Read the information and click **Next>**. A Read Me screen appears (Figure 23).

Figure 23.



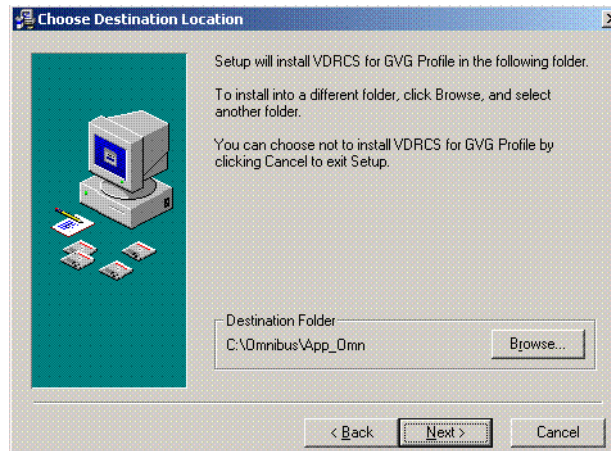
7. Click **Next>**. A Choose Profile Type screen appears (Figure 24).

Figure 24.



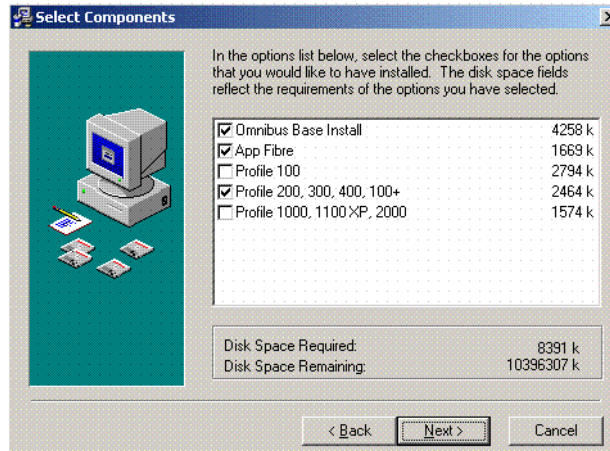
8. Once again select the Profile model you are installing VDRCS onto. A Choose Destination screen appears (Figure 25).

Figure 25.



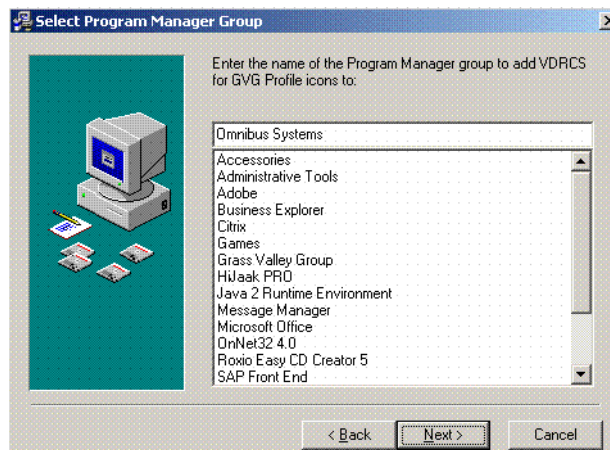
9. Select the default destination by clicking **Next>**. A Select Components screen appears (Figure 26).

Figure 26.



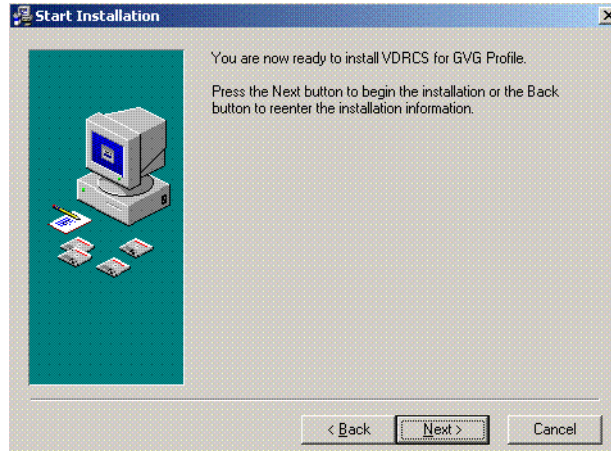
10. The Profile model previously selected will be checked along with the Omnibus Base Install. The App Fibre is also selected by default. If you are not using Fibre channel you can uncheck this box. When done, click **Next>**. The Program Manager Group screen appears (Figure 27).

Figure 27.



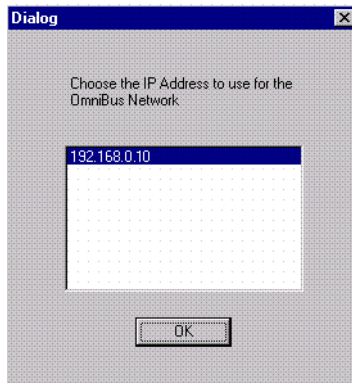
11. Use the default group name and click **Next>**. A Start Installation screen appears (Figure 28).

Figure 28.



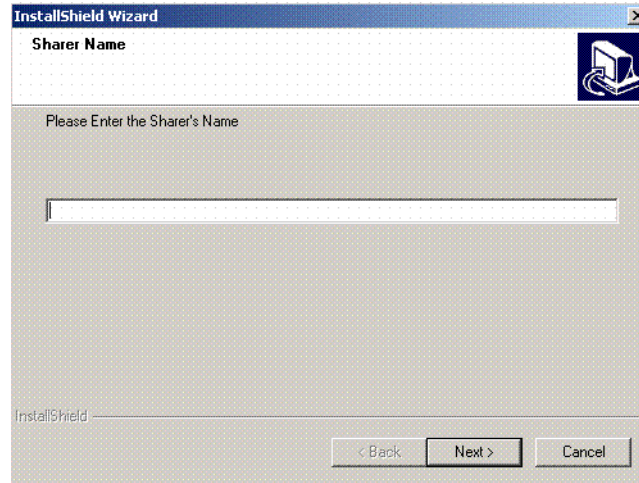
12. Click **Next>**. Windows with progress bars appear and then an IP address dialog is displayed (Figure 29).

Figure 29.



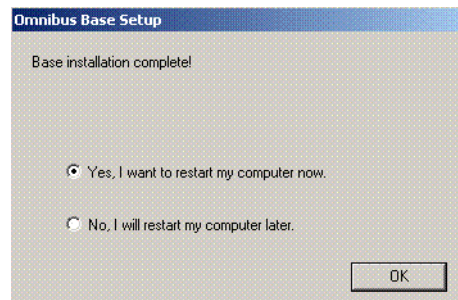
13. Click **OK** to use the default IP address displayed for the Encore network. A Sharer Name screen appears (Figure 30).

Figure 30.



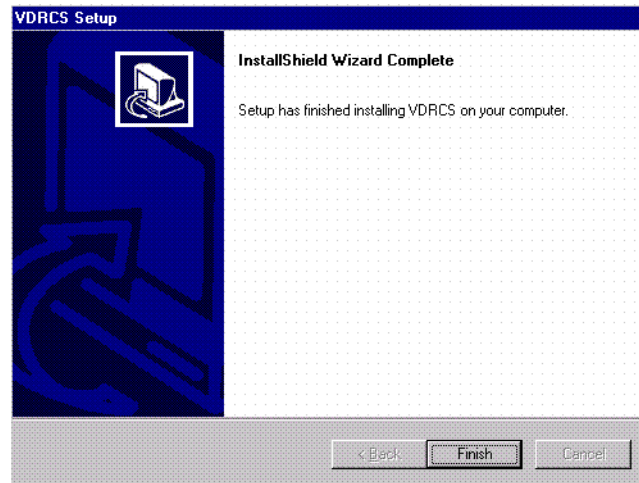
14. Enter the exact name or IP address of the computer running the Sharer application and Click **Next>**. (The Sharer computer on many Kalypso systems is the Menu panel). A progress bar will run, and an Omnibus Base Setup screen appears (Figure 31).

Figure 31.



15. Keep the **Yes** restart computer option selected and click **OK**. A finish screen appears briefly and then the computer restarts (Figure 32).

Figure 32.



16. If you chose **No** above, click **Finish**.
17. Remove the VDRCS CD from the Profile's CD-ROM drive and store it in a safe place.
18. Reboot the Profile to complete the installation.

You now must continue with the installation and configuration procedures for the Kalypso and Encore systems.

## Install VDRCS over Network

If the Profile does not have a CD-ROM drive, software can be installed over the network.

A standard PC with a CD-ROM can be connected to the network for this purpose, or

1. If necessary, set up the Profile to communicate over the network, using the Windows controls at Start\Settings\ControlPanel\Network.
2. The Kalypso system CD-ROM can be used, which should already be configured on the network. Alternatively, you can use any PC with a CD-ROM drive, but it will need to be configured and connected to the network. In either case, the devices must be in the same Windows Workgroup.
3. Insert the KAL-IF-PROFILE CD into the CD-ROM drive of the Kalypso system or PC connected to the network. You will need to know the name of the computer and the path to reach it over the network.

4. Share the disk in the CD drive of the PC:
  - a. Double click on **My Computer** and select the CD drive (generally D: or E:)
  - b. Select **File, Sharing**.
  - c. Click on **Shared As**.
  - d. Enter a share name, for example KAL\_CD.
  - e. Click on Permissions and select **Everyone, Full Control**.
  - f. Click **OK**, and click **OK** again.
5. On the Profile, use Network Neighborhood to navigate to the PC with the shared drive. The default name for the Kalypso Menu panel is Kalypsomenu1. If prompted for a name and password, enter the name **KALYPSO** and the password **kalypso** (must be lower case).
6. Open the drive and run the Install from CD procedure as described on [page 32](#).
7. If you have multiple Profiles on the network, go to each one in turn and repeat [Step 5](#).
8. Remove the CD from the PC and store it in a safe place.

## Edit Batch File for Fibre Channel or PLS 200

During installation a batch file is installed on the Profile for setting Fibre Channel and PLS200 operation. The defaults are Fibre Channel ON and PLS200 OFF. If you are not using Fibre Channel, or have a PLS 200 installed, the `c:\omnibus\app_omn\AppStart.bat` batch file will need to be edited.

1. Make the batch file editable:
  - a. Right click on **AppStart.bat** and select **Properties**.
  - b. Uncheck the **Read only** attribute and click **OK**.
2. Open the file in Notepad for editing by right clicking on **AppStart.bat** and selecting **Edit**.
3. If you will not be using Profile Fibre Channel clip transfers, add REMs to the following section:

```
REM echo Starting App_Fibre . . .
REM start "OmniBus Fibre" /D\Omni-
Bus\App_Omn\!App_fibre\ /MIN \Omni-
Bus\App_Omn\!App_fibre\App_Fibre.exe
```
4. If the Profile is connected to a PLS200 remove the REMs from the following section:

```
echo Starting App_PLS . . .  
start "OmniBus PLS" /D\OmniBus\App_Omn\!App_PLS\ /  
MIN \OmniBus\App_Omn\App_PLS.exe
```

5. Save the modified batch file.

## Connect Profile Video Outputs to Kalypso Inputs

The video outputs of each Profile channel being used are attached to Kalypso Input module connectors. List the Kalypso Input module number and J connector number for each connection for later use when configuring the Kalypso system sources. The order of the channels (1, 2, 3, etc.) will match the names of the Device Definitions.

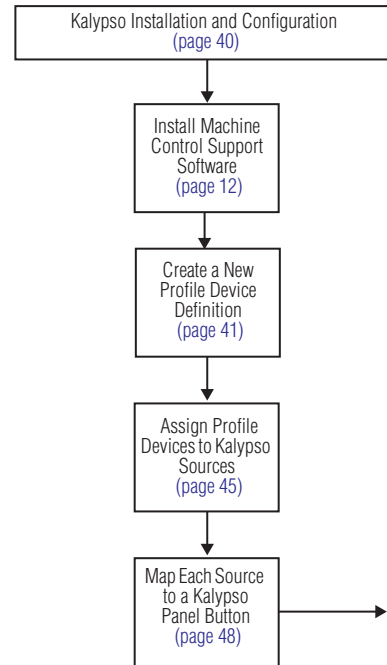
# Kalypso Installation and Configuration

## Install Encore Software

If you have not already done so, install the appropriate Encore software using the Kalypso Software CD (see *Machine Control Support Software Installation* on page 11).

**Note** If you have Omnibus already running at your facility, then do not install it on the Kalypso system. Similarly, if you have more than one Kalypso system on the network, then the Sharer and System Manager should be loaded on only one of these systems.

You now need to configure the Kalypso system to recognize the Profile for machine control.





## Create a New Profile Device Definition

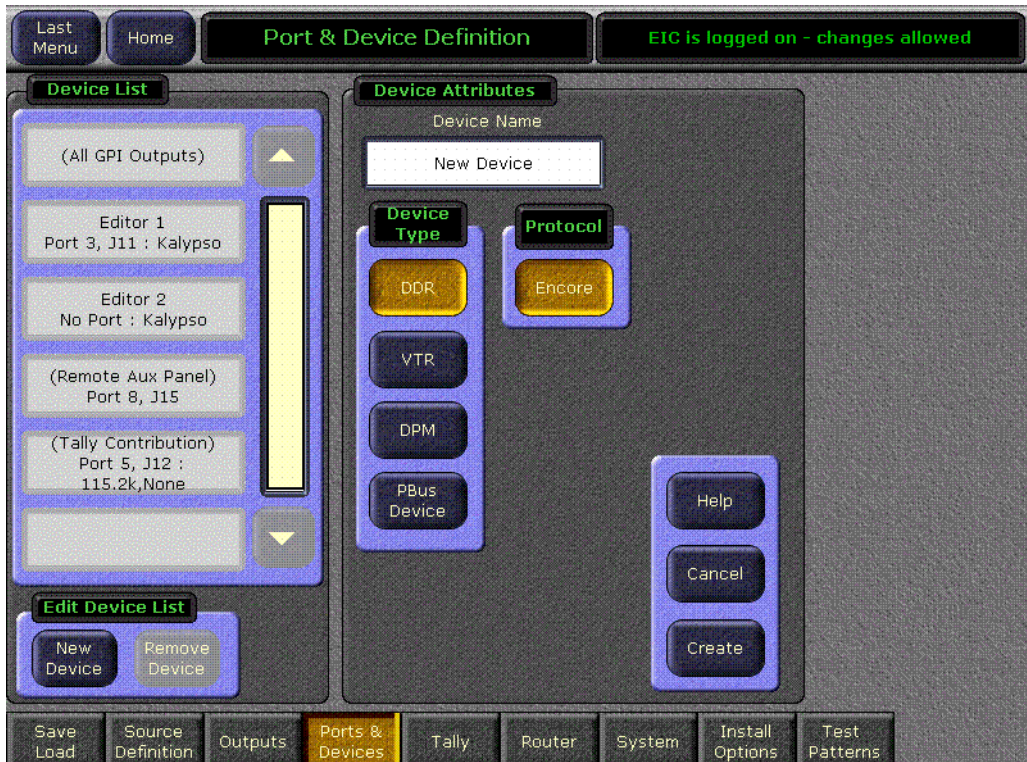
1. Log on as the EIC so you can change the Eng Setup configuration (touch **Daily Setups, EIC Login**).
2. After logging on, go to the Eng Setup Port & Device Definition menu (touch **Eng Setup, Ports & Devices**). A menu similar to [Figure 33](#) is displayed.

Figure 33. Port & Device Definition Menu



3. Touch **New Device** in the Edit Device List pane, then select **DDR** as the Device Type (Figure 34).

Figure 34. Device Definition Data Entry Menu



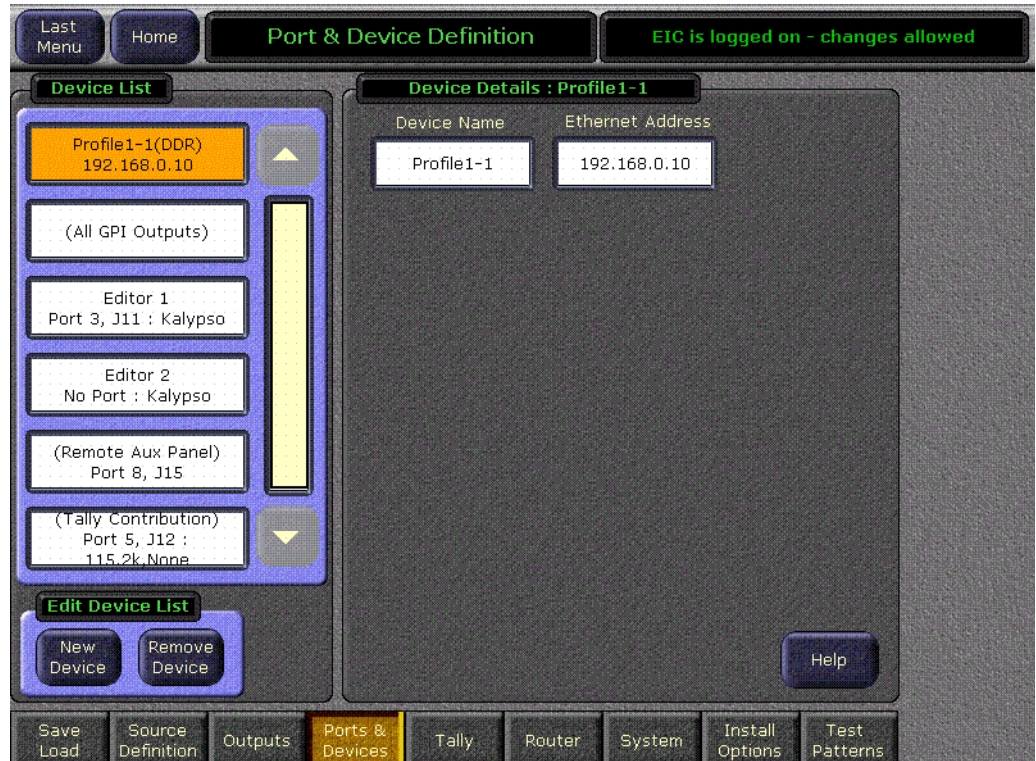
4. Touch the **Device Name** data pad and enter the name you wish to use to identify the device.
  - a. Enter **Profile1-1** (no space with dash) for the first channel of a multiple channel Profile system.

**CAUTION** The Profile **Device Name** entered here must exactly match the name used by the Encore system for that Profile channel. The names above are commonly used when an Encore system is configured, but may be different at your facility.

- b. Touch the **Create** button on the lower right. The next menu will appear.

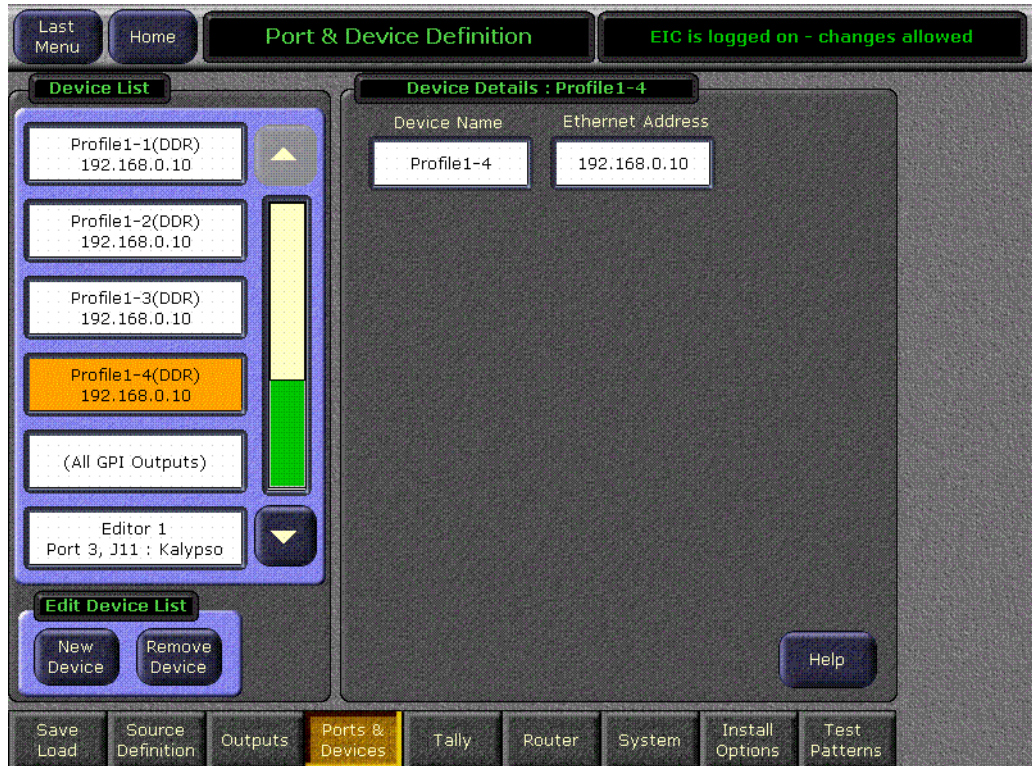
5. Touch the **Ethernet Address** data pad and enter its exact value (default Profile VDR address is 192.168.0.10). Figure 35 shows the menu after the name and IP Address have been entered.

Figure 35. Device Definition Menu with Profile Data



- Repeat this process for every channel of that Profile VDR, incrementing the number by one for each. A four channel configuration is shown in Figure 36.

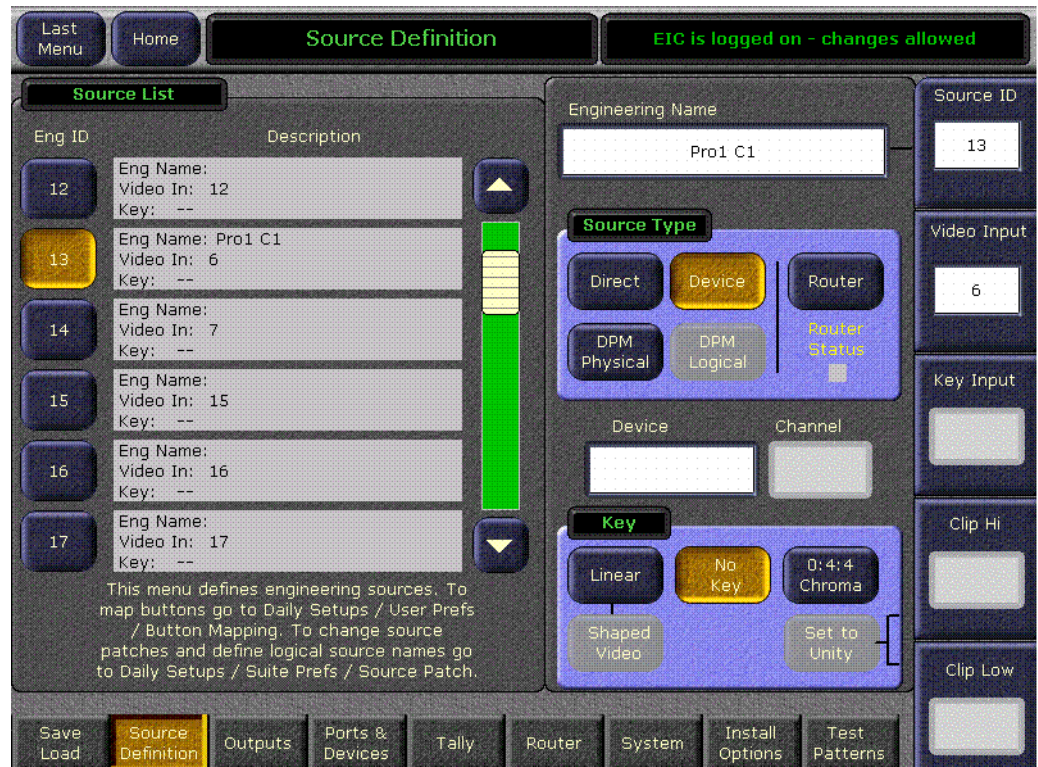
Figure 36. Device Definition Menu with Four Channel Profile Configuration



## Assign Profile Devices to Kalypso Sources

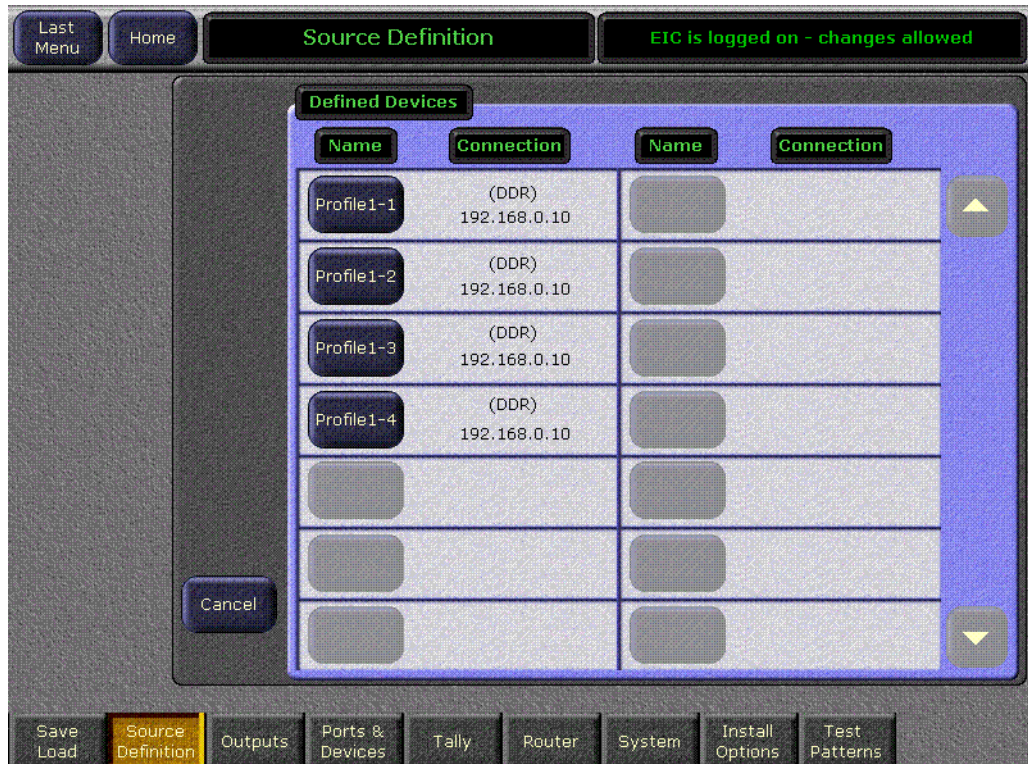
1. Touch the **Source Definition** category selection button at the bottom of the screen. Select the Engineering source on the scrolling list, name the source with the Engineering Name data pad, select the input number(s), and enter any keying information.
2. Touch the **Device** Source Type button. The Device datapad below activates (Figure 37).

Figure 37. Source Definition Menu, Available Devices



3. Touch the **Device** data pad in the new window. A menu similar to Figure 38 is displayed.

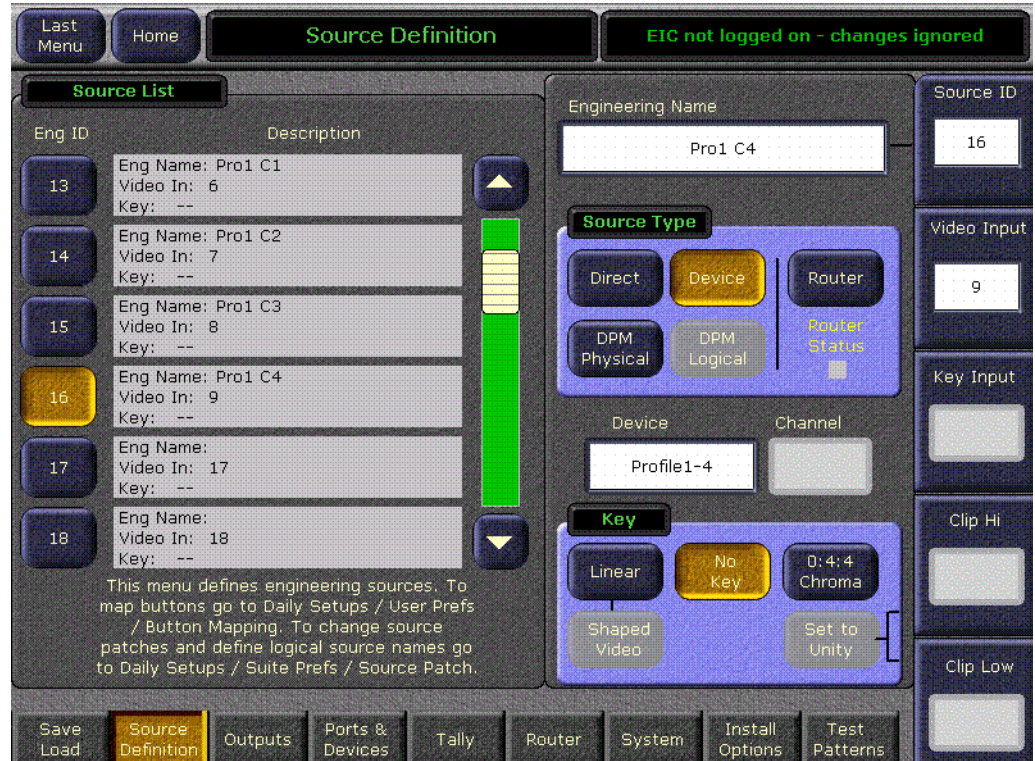
Figure 38. Source Definition Menu, Available Devices



4. Touch the name button of the desired defined device. This assigns that device for control by that selected source and the previous menu is then displayed.

- Repeat the steps above to name each additional Kalypso source as a Profile channel, select the input, and assign the appropriate device. These sources are now defined as Profile VDR channels, as shown in Figure 39.

Figure 39. Source Definition Menu, Devices Assigned



## Map Each Source to a Kalypso Panel Button

1. Go to the Button Mapping menu by touching the **Daily Setups** button on the Menu panel, then press **User Prefs** and **Button Mapping** buttons.
2. Assign each Profile VDR source from the right scrolling pane to the desired menu button on the left scrolling pane (Figure 40).

Figure 40. Button Mapping Menu with Profile Sources Assigned



## Save Kalypso Configuration Files

You should now save the Kalypso Engineering Setup file and User Prefs files that contain the new machine control settings. This is accomplished from the Save Load menu for Eng Setup, and the separate Save Load menu for Daily Setups. Refer to the separate *Kalypso User Manual* for specific instructions.

**Note** If after testing the interface, changes must be made to the Kalypso settings, remember to save the modified Eng Setup and User Prefs configuration files.



# Encore Configuration

## Configure Encore Software for Profile

After VDRCS has been installed on a Profile VDR, the Encore software itself must be configured using the Encore OUI. The following procedure assumes the Encore software and default database were properly installed onto a Kalypso system using the Kalypso software CD. For more detailed information about configuration, refer to the Encore end user documentation.

### Access OUI and Log In as SYS

1. Make sure that the Kalypso Menu panel and Profile are both connected to the network and that their IP addresses are on the same subnet.
2. Press the **Facility Manager** button on the Kalypso Menu panel to go to the Encore OUI (Figure 41).

**Note** Do not use the older **wincui** icon, if still present on your system.

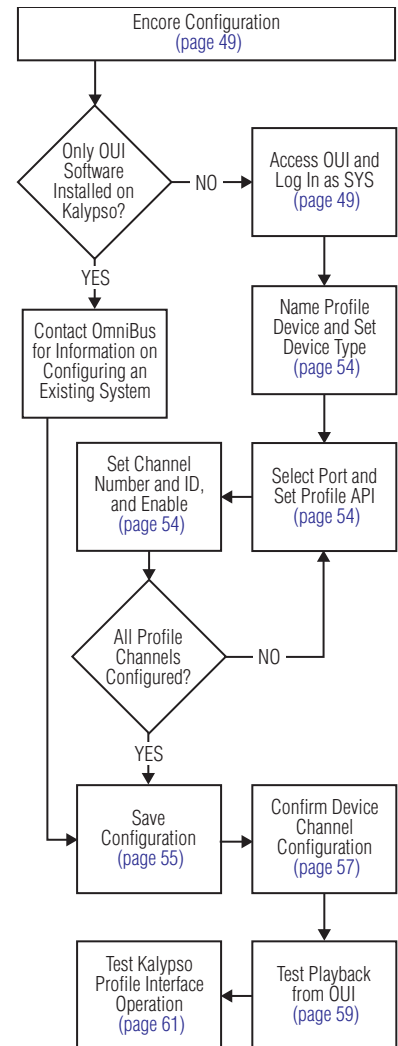


Figure 41. Encore Welcome Message. KAL Login



3. Click the button on the lower right corner of the menu labeled either **Start** (not logged in) or with the login name (**KAL** is the default shown in Figure 41). You may need to drag the window up to see the buttons.
4. If logged in as KAL the warning message shown in Figure 42 appears. Select **YES** to log off, then click on the OFF LINE button on the lower right.

Figure 42. Logoff Warning Message



5. A popup keypad will appear next. Type **SYS** and press the **Enter** key (no password required). Logging in as the system administrator ensures you have full permissions for configuration changes. A Welcome dialog will appear, with SYS identified on the lower right button (Figure 43).

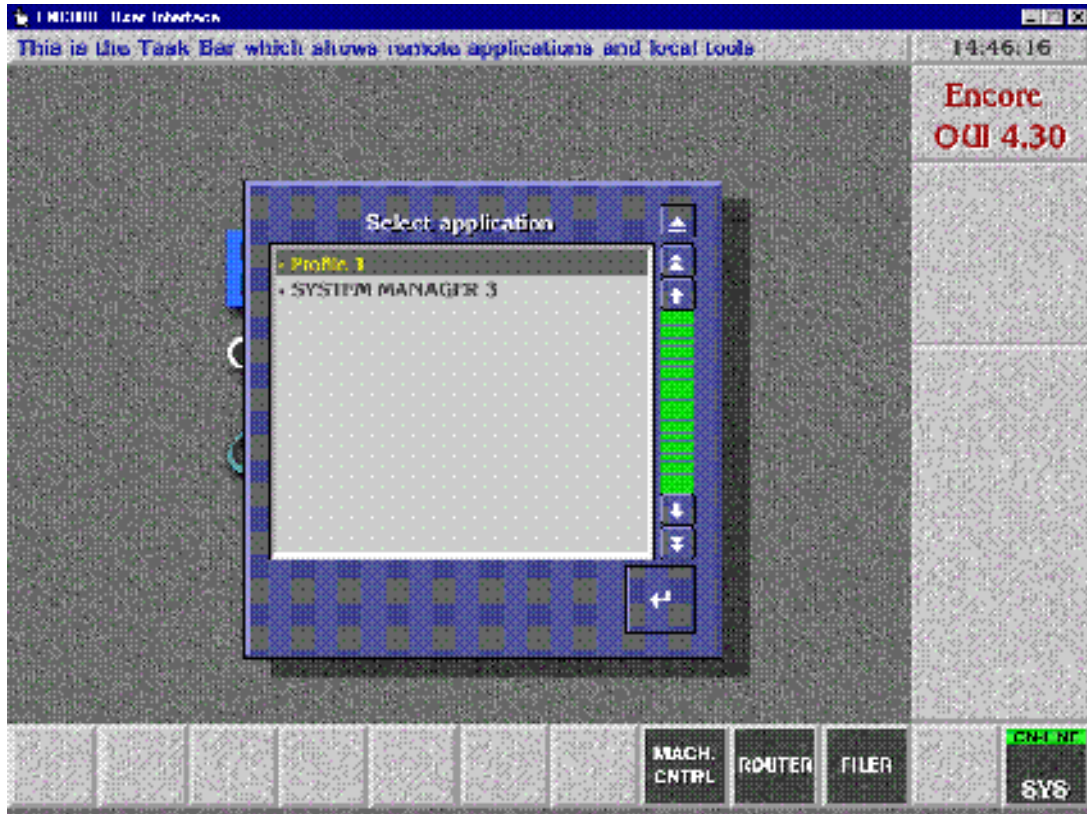
Figure 43. Encore Welcome Message, SYS Login



6. Close the Welcome to Encore screen by clicking on the upper right triangle symbol Eject box on its own window (do not use the Windows minimize or close boxes).

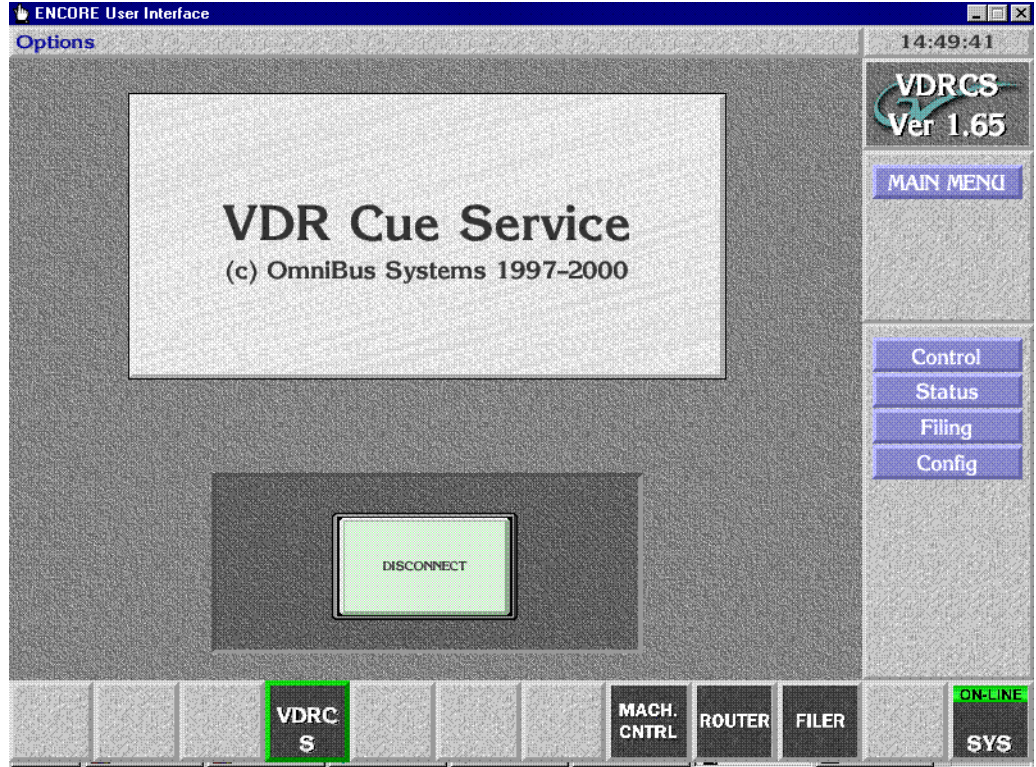
7. Click on an empty box on the task bar at the bottom of the screen. A Select Application pane appears with a list of applications (Figure 44).

Figure 44. Encore Select Application Window?



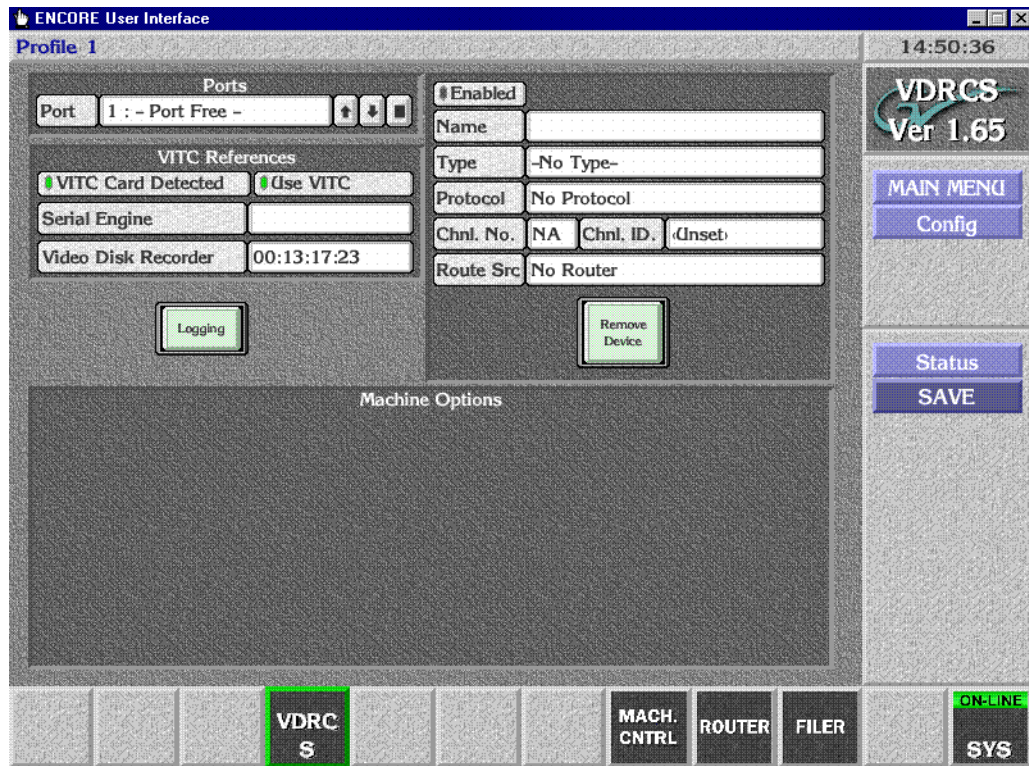
8. Select **Profile 1** by double-clicking on it, or click on it once and then click on the large angle arrow Enter button on the lower right of the selection window. The VDR Cue Service menu will appear (Figure 45).

Figure 45. Encore VDR Cue Service Menu



9. Select **Config** on the task bar on the right. A configuration window will appear (Figure 46).

Figure 46. Encore Profile Device Configuration Window



## Name Profile Device and Set Device Type

10. Click on the **Name** field, backspace over any existing characters and type **Profile1** (no space) and then press the **Enter** key.
11. Set the **Type** field to **Profile PDRx00** (depending on which type of Profile you are using).

## Select Port and Set Profile API

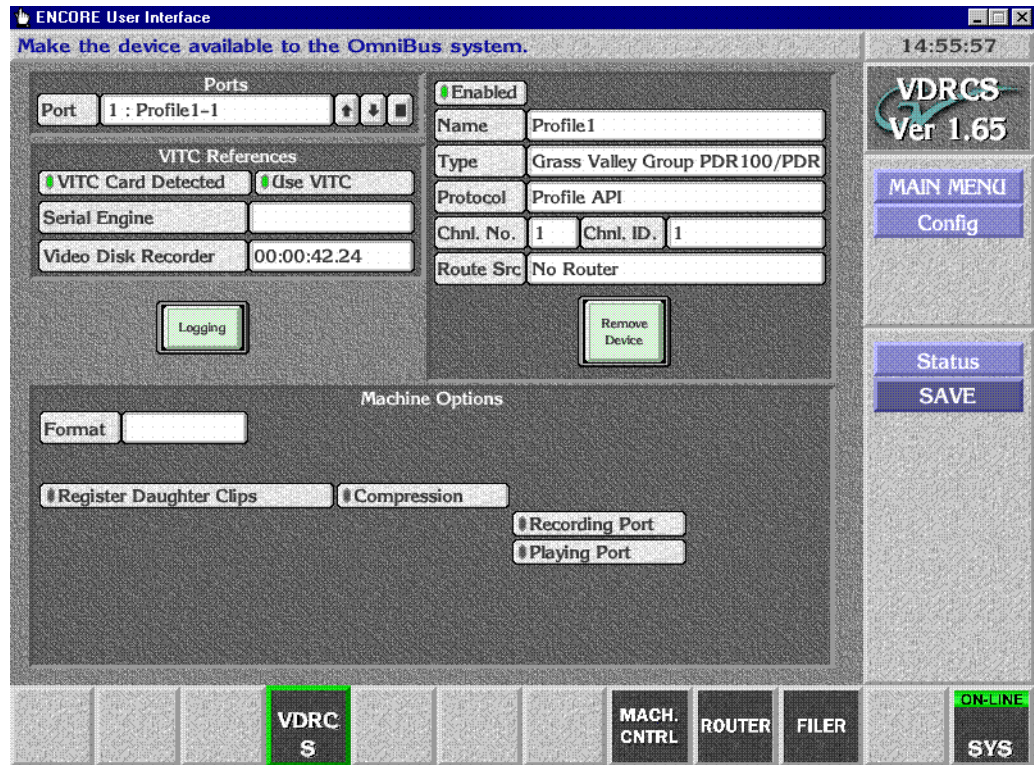
12. Click on **Port** on the upper left corner of the screen and choose the port number. Choose **Port 1** to start, then click on the angle arrow Enter button.
13. Set the **Protocol** field to **Profile API**.

## Set Channel Number and ID, and Enable

14. Set the **Chnl. No.** field for the Profile channel. Use **1** for the first Profile channel.

15. Set the **Chnl. ID** field for the Profile channel. Use **1** (back space over any existing characters) for the first Profile channel.
16. **Enable** that channel by selecting the small box above the name field so it is green. Your menu should then look like [Figure 47](#).

Figure 47. Encore Profile Device with Configuration Data



17. Repeat [Step 12](#) through [Step 16](#) for the other channels, incrementing the Port, Channel No, and Channel ID values. The Name, Type, and Protocol fields should be the same for all the channels on that Profile.

## Save Configuration

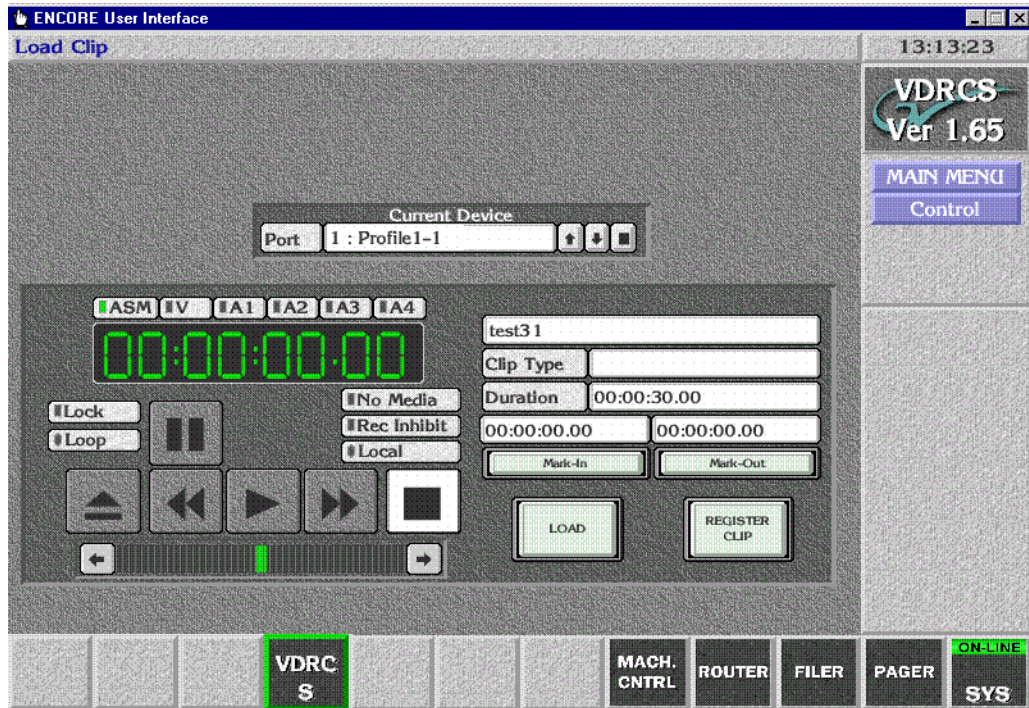
18. Click on **SAVE** on the right to save configuration for all the channels. A confirmation message box will appear over the window.
19. Click on the message box to close it.

## Test Lower Level Control

You can now test communication and control to the Profile using VDRCS. This test uses the Profile's Native Protocol and does not use the Encore Machine Control configuration settings.

20. Click on **MAIN MENU**, then click on the **Control** item on the right. A menu will appear for the Profile channel that was last selected (Figure 48).

Figure 48. VDRCS Control Menu



21. Click **LOAD** and choose a clip from the list of recorded clips.
22. Select that Profile source on a PVW bus on the Kalypso switcher so its image can be seen on a monitor.

**Note** Do not use the PGM bus, because when the device is on-air it cannot be controlled from another location.

23. On the VDRCS menu (not the Kalypso Main panel), click on the play and stop buttons to roll and stop the clip and view the monitor to confirm that control at this level exists.
24. Exit VDRCS by clicking on the **MAIN MENU** item on the right task bar, then clicking on the **Disconnect** message box.



# Test Configuration and Operation

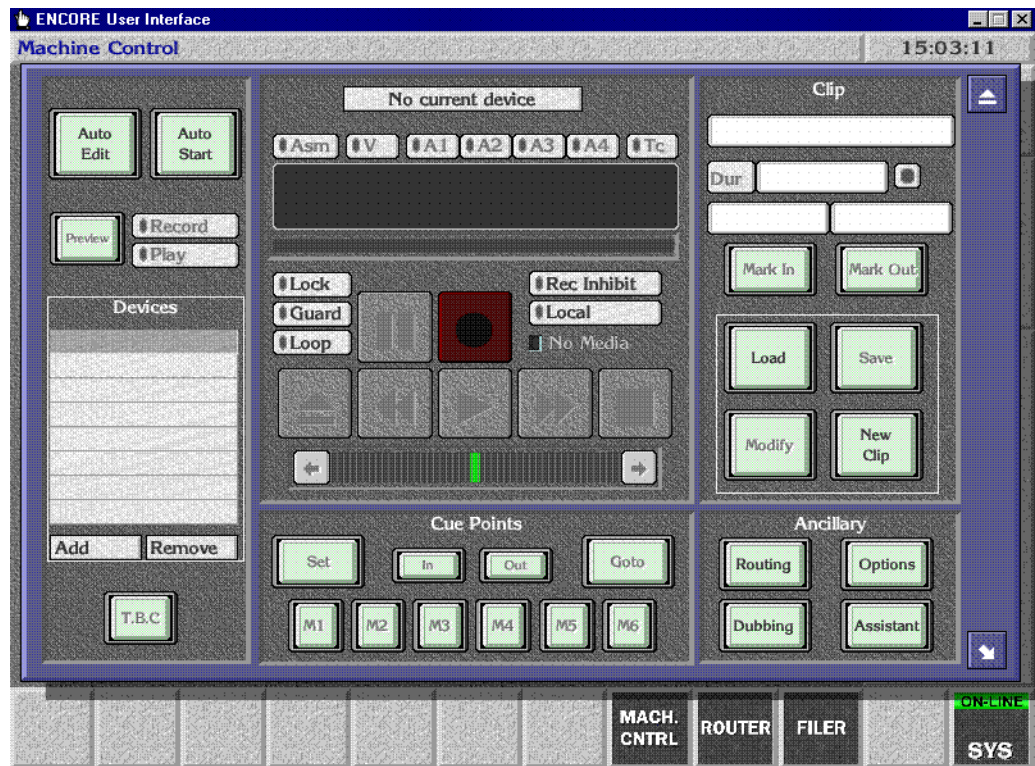
With VDRCS installed and the Kalypso and Encore systems configured, you should have machine control from the Kalypso Main panel. Source buttons mapped to devices should no longer have a ? status indicator.

If control is not working properly, you can use the following procedures to test whether the problem resides on the Encore system or the Kalypso system.

## Confirm Device Channel Configuration

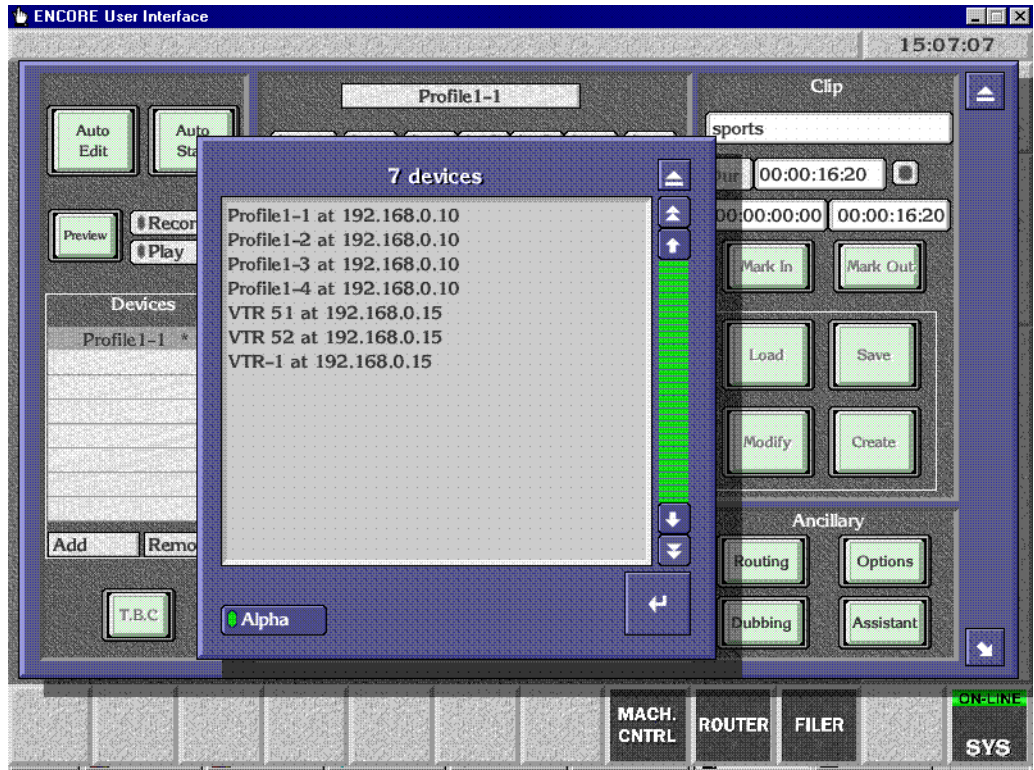
1. Access the **Local Machine Control Panel** by touching the **MACH CNTRL** button on the lower task bar. A screen like [Figure 49](#) will appear.

Figure 49. Encore Local Machine Control



2. Click on **ADD** on the left side of the screen. A list including multiple Profile devices with the same IP address should appear. [Figure 50](#) assumes a 4-channel Profile has been configured.

Figure 50. List of Configured Encore Devices



## Test Playback from OUI

You can now test that the Profile can be controlled directly with the Encore User Interface.

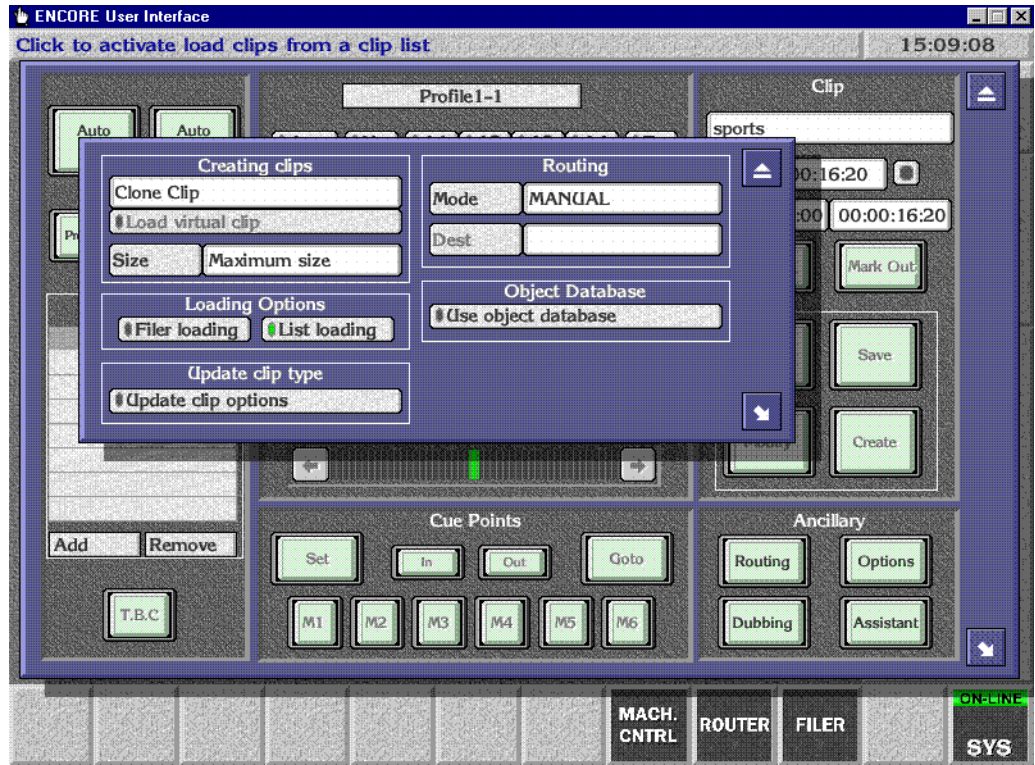
- From the list shown on [Figure 50 on page 58](#), select one of the Profile devices and click on the Enter button on the lower right of the devices list. This selects one of the devices for local control on the Machine Control menu ([Figure 51](#)).

Figure 51. Profile Selected for Encore Local Control



4. Click on the **Options** button on the lower right to open a clips menu, and make sure the **List Loading** option has been selected. This ensures you can load clips residing on the Profile (Figure 52).

Figure 52. Encore List Loading Option



5. Close the clips menu, then click on the **Load** button on the middle right. If clips have been recorded on the Profile a list of these clip will appear. Select one to play.

- Click on the Play symbol button in the center of the screen. Timecode should advance while the clip plays (Figure 53), demonstrating that machine control exists.

Figure 53. Encore Profile Clip Playback



## Test Kalypso Profile Interface Operation

Test that the Profile can be controlled directly with the Kalypso Machine Control subpanel.

- Select a Profile channel to control on the PGM PST B bus (or whatever bus has been delegated),
- Scroll through a list of available Profile clips, viewing their names on the readout,
- Cue and load a selected clip, and
- Play, Stop, Fast Forward, and Rewind the loaded clip.

You have now completed the Profile interface installation and configuration for Kalypso control.

**Note** You should now back up the Encore configuration files (see [Saving Encore Machine Control Configurations on page 25](#)).



# VTR Interface

## Introduction

The Kalypso system can be interfaced to control VTRs, using the Encore control system.

### Encore VTR Interface Components

The VTR interface components consist of:

- Serial Control Engine hardware running the Acorn OS, and capable of controlling up to six VTRs,
- VSVC application software (provided on two specially formatted floppy disks, used for installation on the Serial Control Engine),
- a Sharer/System Manager application, responsible for overseeing the entire Encore network and to configure users and their access to the network (provided on the Kalypso Software CD),
- a Port Mapper application (Base Install), used to manage system networking ports (provided on the Kalypso Software CD), and,
- an Encore OUI (Operator User Interface) application, (provided on the Kalypso Software CD).

A Sharer and System Manager must be installed somewhere in your facility to use Kalypso system machine control. However, only one instance should be running on the network.

### Required Materials

You will need the following additional materials and signals to install the VTR interface:

- Black Burst with house VITC
- Category 5 Ethernet cable
- RS-422 Serial cable (9-pin for ports 1-4)

**Note** Serial Engine ports 5 and 6 have a single 44 pin connector. See the OmniBus Serial Engine documentation for pinout information.

You will also need the following additional materials if you are not using default Kalypso and Serial Engine configurations:

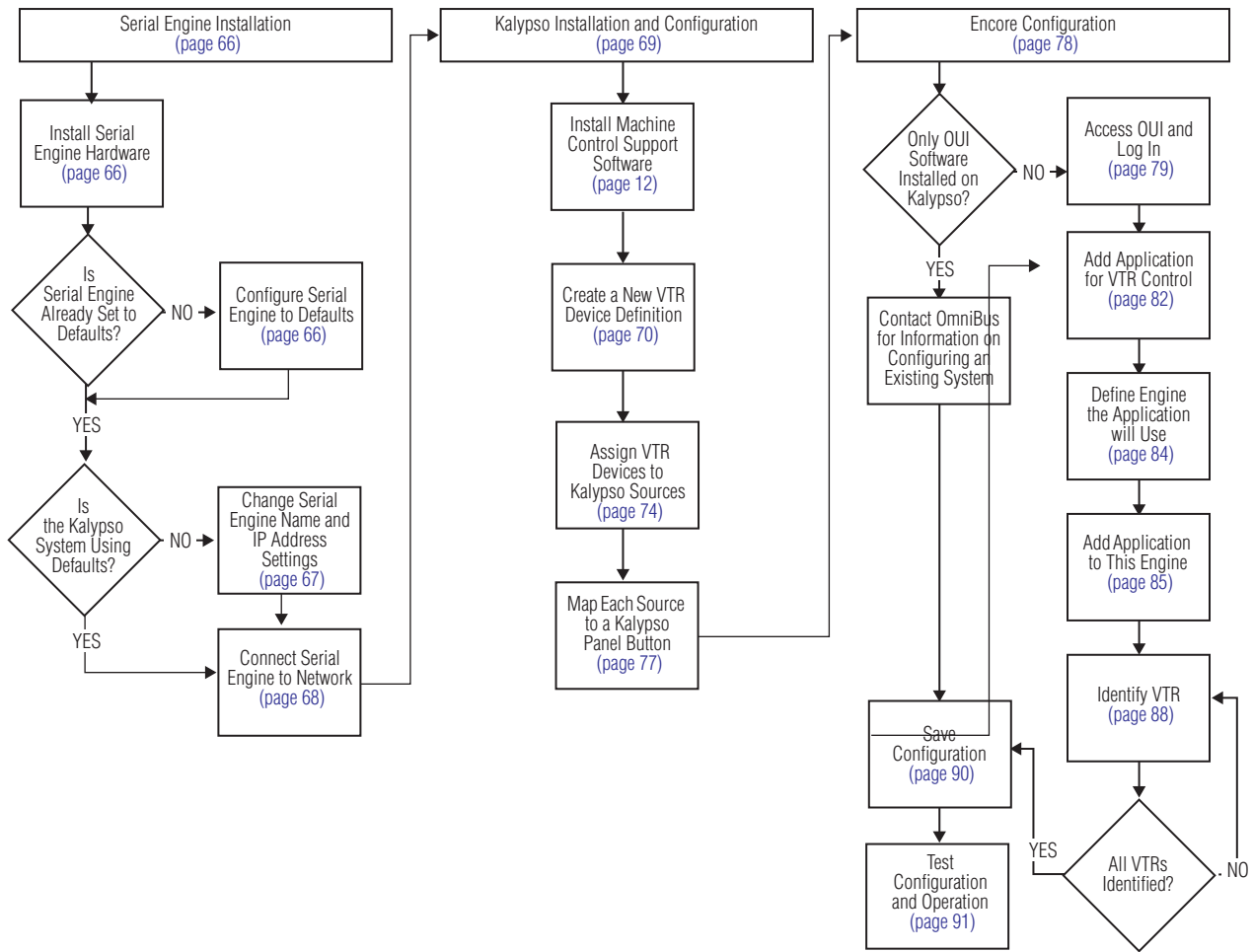
- VGA Monitor
- PC keyboard (European or American)
- Mouse (3 button required; left, right, and center presses may be needed)



# Overall VTR Configuration Procedure

Interfacing a VTR with the Kalypso system involves configuring the Serial Engine itself, the Encore software used for system integration, and the Kalypso system (Figure 54). All three procedures must be completed in the order displayed in the flow diagram.

Figure 54. VTR Interface Flow Diagram



# Serial Engine Installation

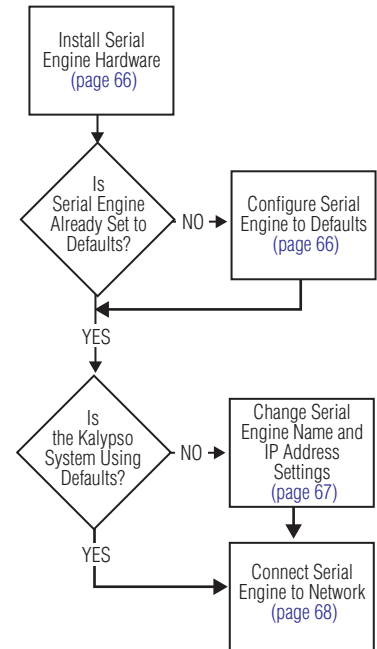
## Install Serial Engine Hardware

1. Install the Serial Engine frame in a standard rack, leaving space above and below for cooling.
2. Connect a Black Burst signal carrying house VITC.
3. Connect RS-422 serial cables from each VTR to a Serial Engine port. Note the number of each port used for each VTR for later use during configuration.

**Note** To prevent possible IP Address conflicts, do not connect the Ethernet Cable to the Kalypso switch now. This will be done after the Serial Engine has been configured with its correct IP address.

4. Power up the Serial Engine by connecting its power cable, and then check its current settings.

**Note** If on power up the Serial Engine reports **VTR Control 1** and **IP 192.168.0.15** on its front panel it has already been set to defaults. You can skip the procedure below and go to [Change Serial Engine Name and IP Address Settings on page 67](#).



## Configure Serial Engine to Defaults

This procedure copies files from floppy disks to install software and configure the Serial Engine to default settings.

1. Power down the Serial Engine by disconnecting its power cable.
2. Remove the front panel from the Serial Engine.
3. Insert the **VTR Interface Software (Disk 1 of 2)** floppy disk into the floppy drive.
4. Power up the Serial Engine by connecting its power cable.
5. Eject the first floppy disk and insert the **VTR Interface Configuration (Disk 2 of 2)** floppy disk into the floppy drive.
6. Reset the Serial Engine by disconnecting and reconnecting its power cable.

7. Check that **VTR Control 1** and **IP 192.168.0.15** appear on the front control panel, which indicates the Serial Engine is now set to default values.
8. Eject the second floppy disk and store both disks in a safe place.

## Change Serial Engine Name and IP Address Settings

**Note** If your Kalypso system is using default IP addresses, you can use the default Serial Engine settings set above. Proceed to [Connect Serial Engine to Network on page 68](#). If your Kalypso system uses different IP addresses, follow the procedure below.

1. Power down the Serial Engine by disconnecting its power cable.

**CAUTION** The Serial Engine must not be powered when connecting cables behind the front panel.

2. Remove the front panel.
3. Connect a VGA monitor, PC keyboard, and three button mouse to the front connectors.
4. Power up the Serial Engine by connecting its power cable.
5. Left click on **HardDisc4** at the lower left corner of the screen to open a hard disk window.
6. Hold down **Shift**, then left double click on the **!Internet** folder on the scrolling list in the hard disk window to open that folder.
7. Hold down **Shift**, then left double click on the **!Configure** file. This opens a text file for internet configuration. Maximize the window by clicking on the square button at top right corner of the window.
8. Scroll to **Set Inet\$HostName** at the top of the list and enter the host name for the Serial Engine. This is an arbitrary name that appears on the front panel of the serial engine. The default line should read:

```
Set Inet$HostName "VTR CONTROL 1"
```

**Note** The quotation marks are required for all values in this text file.

You can change this if you wish, using the rules below.

- If you have a UK keyboard, you should be able to enter the text directly.
- If you have a US keyboard, you need to type the @ character to enter the " character. (On US keyboards these characters are swapped, and the Delete key behaves the same as the backspace key.)
- Typing does not replace highlighted text. Use the backspace key to delete existing text.

9. Scroll to **Set Inet\$EtherIPAddr** and enter an IP address. The default line should read:

```
set Inet$EtherIPAddr "192.168.0.15"
```

You can change this to a value compatible with your system using the " or @ key as necessary for your keyboard.

10. Scroll to **Set Inet\$EtherIPMask** and enter a subnet mask. The default line should read:

```
Set Inet$EtherIPMask "255.255.255.0"
```

You can change this to a value compatible with your system using the " or @ key as necessary for your keyboard.

11. Press **F3** to open a Save As dialog box, then click **OK** to save the configuration. Then close only the two configuration windows by clicking on the x boxes in the top left corner of each. Leave the **HardDisk4** window open.
12. Check that the configuration is correct by pressing **Ctrl Break** to reboot the Serial Engine. Error messages will appear because the Serial Engine is not connected to a network with the Encore sharer application running. This is the expected behavior and these messages can be safely ignored. Press **Esc** to return to the Acorn desktop. Confirm that the new name and/or new IP address appear on the front control panel.
13. Power off the Serial Engine.
14. Disconnect the monitor, keyboard, and mouse.
15. Reattach the front panel.

## Connect Serial Engine to Network

1. Power off the Serial Engine.
2. Connect the Ethernet cable to the rear of the Serial Engine.
3. Power up the Serial Engine.

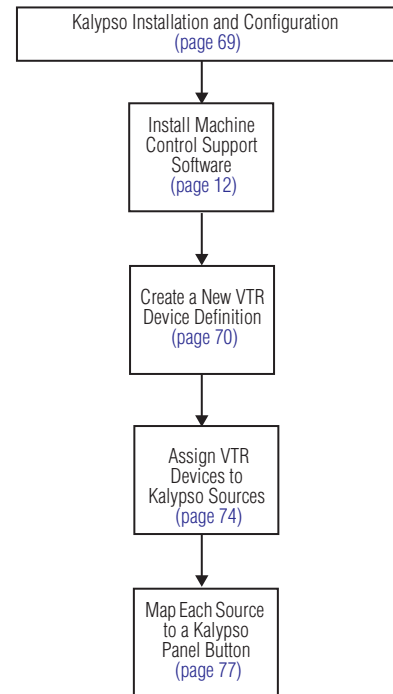
# Kalypso Installation and Configuration

## Install Encore Software

If you have not already done so, install the appropriate Encore software using the Kalypso Software CD (see *Machine Control Support Software Installation* on page 11).

**Note** If you have Omnibus already running at your facility, then do not install it on the Kalypso system. Similarly, if you have more than one Kalypso system on the network, then the Sharer and System Manager should be loaded on only one of these systems.

You now need to configure the Kalypso system to recognize the VTR for machine control.



## Create a New VTR Device Definition

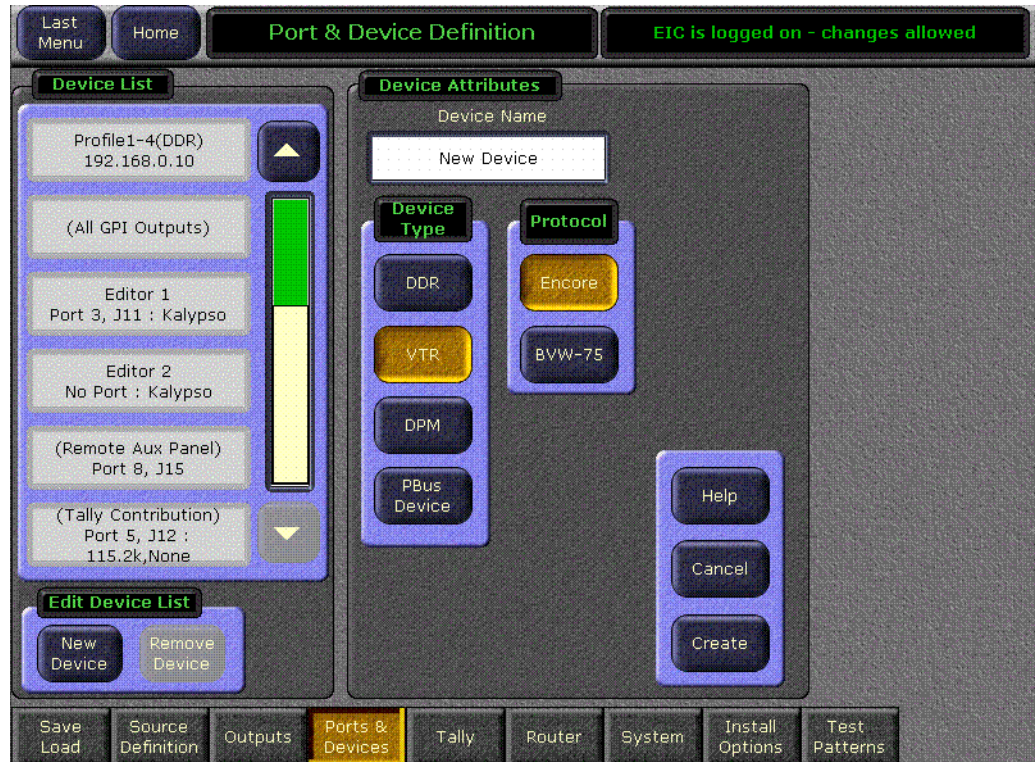
1. Logon to the Kalypso system as the EIC so you can change the Eng Setup configuration (touch **Daily Setups, EIC Login**).
2. After logging on, go to the Eng Setup Port & Device Definition menu (touch **Eng Setup, Ports & Devices**). A menu similar to [Figure 55](#) is displayed.

Figure 55. Port & Device Definition Menu



3. Touch **New Device** in the Edit Device List pane, then select **VTR** as the Device Type and **Encore** as the Protocol (Figure 56).

Figure 56. Device Definition Data Entry Menu



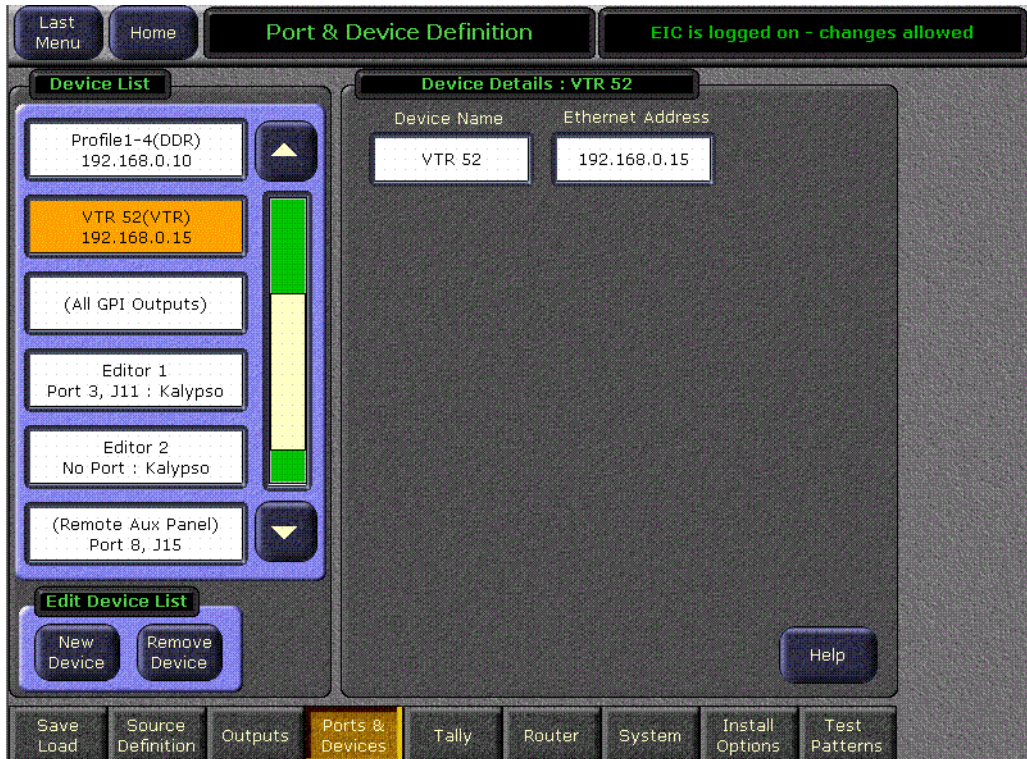
4. Touch the **Device Name** data pad and enter the name you wish to use to identify the device.
  - a. Enter **VTR X** (whatever name you used to identify that VTR).

**CAUTION** The VTR **Device Name** entered here must exactly match the name used by the Encore system for that VTR.

- b. Touch the **Create** button on the lower right. The next menu will appear.

5. Touch the **Ethernet Address** data pad and enter the exact value used for the Serial Engine. **Figure 57** shows the menu after the name and IP Address have been entered. In this example the address is 192.168.0.15, which is compatible with the default Kalypso system IP addresses.

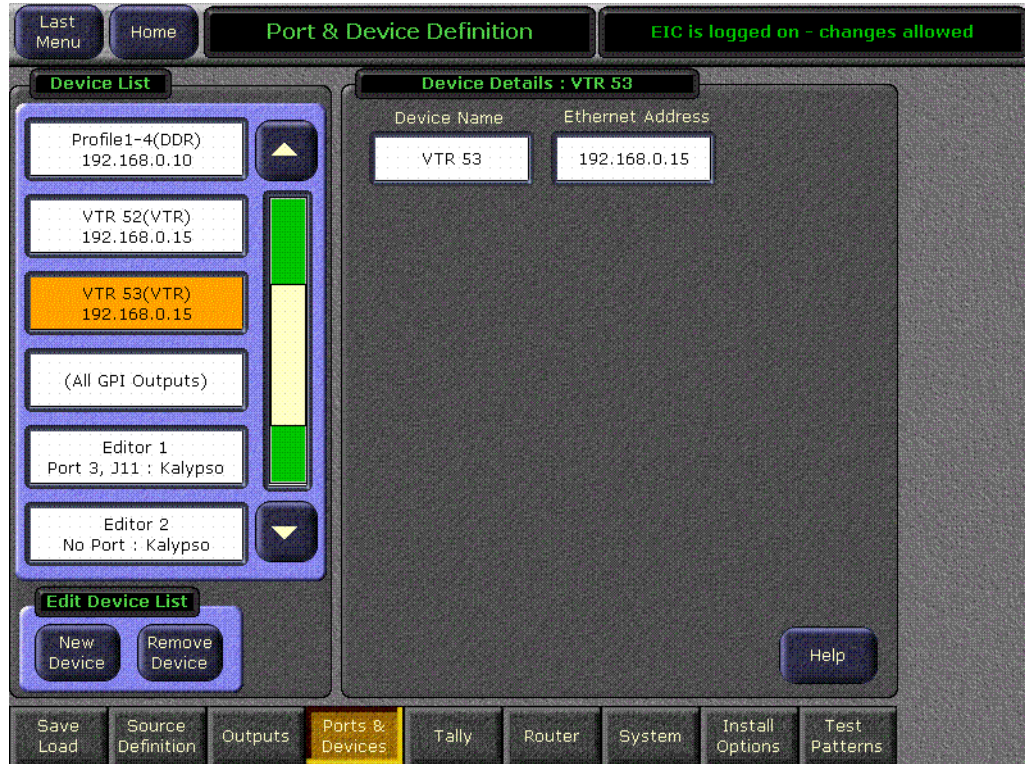
Figure 57. Device Definition Menu with Profile Data





- Repeat this process for every VTR controlled by that Serial Engine. A two VTR configuration is shown in Figure 58.

Figure 58. Device Definition Menu with Four Channel Profile Configuration



## Assign VTR Devices to Kalypso Sources

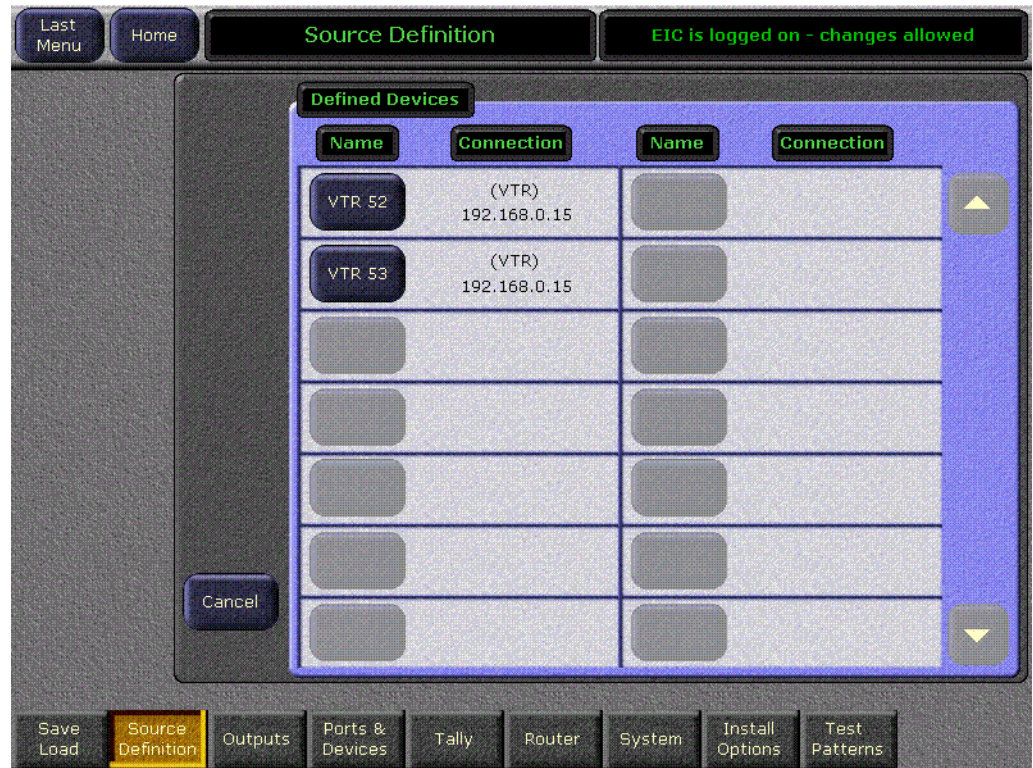
1. Touch the **Source Definition** category selection button at the bottom of the screen. Select the Engineering source on the scrolling list, name the source with the Engineering Name data pad, select the input number(s), and enter any keying information.
2. Touch the **Device** Source Type button. The Device datapad below activates (Figure 59).

Figure 59. Source Definition Menu, Available Devices



3. Touch the **Device** data pad. A menu similar to Figure 60 is displayed.

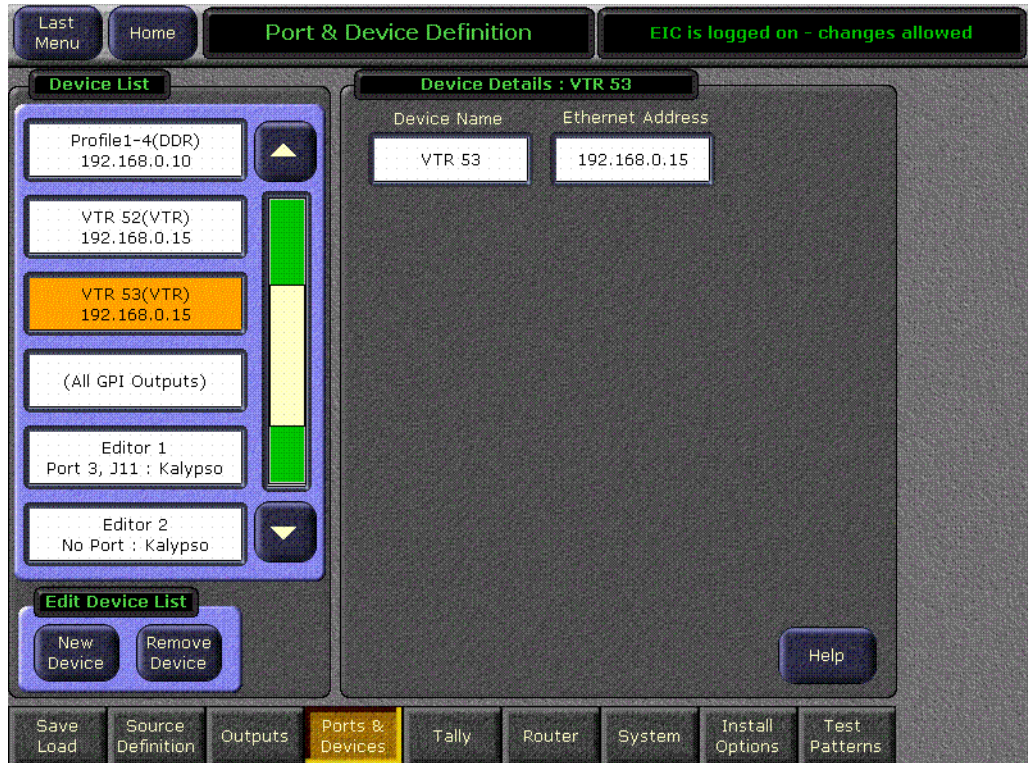
Figure 60. Source Definition Menu, Available Devices



4. Touch the name button of the desired defined device. This assigns that device for control by that selected source, and the previous menu is displayed.

- Repeat the steps above to name each additional Kalypso source as a VTR channel, select the input, and assign the appropriate device. These sources are now defined as VTR channels, as shown in [Figure 61](#).

Figure 61. Source Definition Menu, Devices Assigned



## Map Each Source to a Kalypso Panel Button

1. Go to the Button Mapping menu by touching the **Daily Setups** button on the Menu panel, then press **User Prefs** and **Button Mapping** buttons.
2. Assign each VTR source from the right scrolling pane to the desired menu button on the left scrolling pane (Figure 62).

Figure 62. Button Mapping Menu, with Profile Sources Assigned



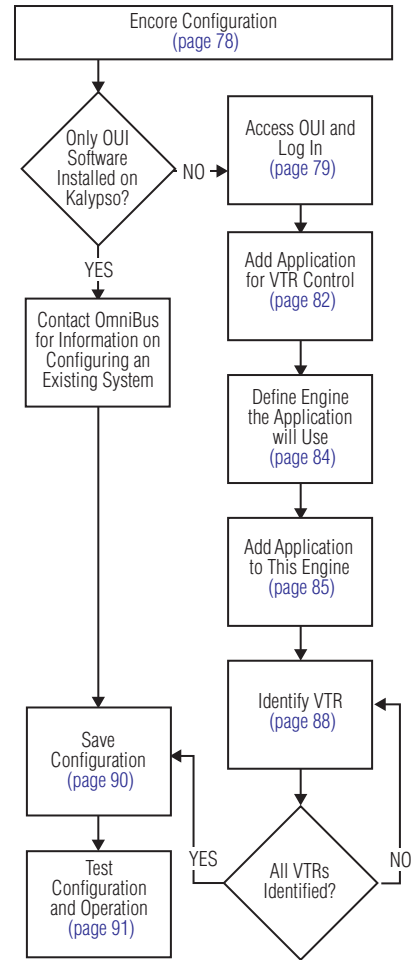
## Save Kalypso Configuration Files

You should now save the Kalypso Engineering Setup file and User Prefs files that contain the new machine control settings. This is accomplished from the Save Load menu for Eng Setup, and the separate Save Load menu for Daily Setups. Refer to the separate *Kalypso User Manual* for specific instructions.

**Note** If after testing the interface, changes must be made to the Kalypso settings, remember to save the modified Eng Setup and User Prefs configuration files.

# Encore Configuration

This procedure assumes the Encore software has already been installed on the Kalypso system. A keyboard is required for this procedure, and a mouse is recommended for easier OUI navigation.



## Access OUI and Log In

### Access OUI and Log In as SYS

1. Make sure that the Kalypso Menu panel and Serial Engine are both connected to the network and that their IP addresses are on the same subnet.
2. Press the **Facility Manager** button on the Kalypso Menu panel to go to the Encore OUI (Figure 63).

**Note** Do not use the older **wincui** icon, if still present on your system.

Figure 63. Encore Welcome Message. KAL Login



3. Click the button on the lower right corner of the menu labeled either **Start** (not logged in) or with the login name (**KAL** is the default shown in Figure 63).

4. If logged in as KAL the following warning message appears (Figure 64). Select **YES** to logoff.

Figure 64. Logoff Warning Message



5. A popup keypad will appear next. Type **SYS** and press the **Enter** key (no password required). Logging in as the system administrator ensures you have full permissions for configuration changes. A Welcome dialog will appear, with SYS identified on the lower right button (Figure 65).

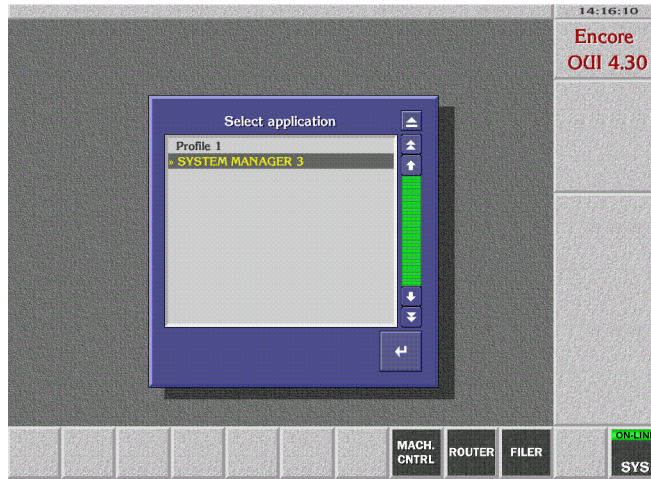
Figure 65. Encore Welcome Message, SYS Login





6. Close the Welcome to Encore screen by clicking on the upper right triangle symbol Eject box on its own window (do not use the Windows minimize or close boxes).
7. Click on an empty box on the task bar at the bottom of the screen. A Select Application pane appears with a list of applications (Figure 66).

Figure 66.



8. Double click **SYSTEM MANAGER 3** on the list. A System Manager Main Menu window will appear (Figure 67).

Figure 67. Encore System Manager Main Menu

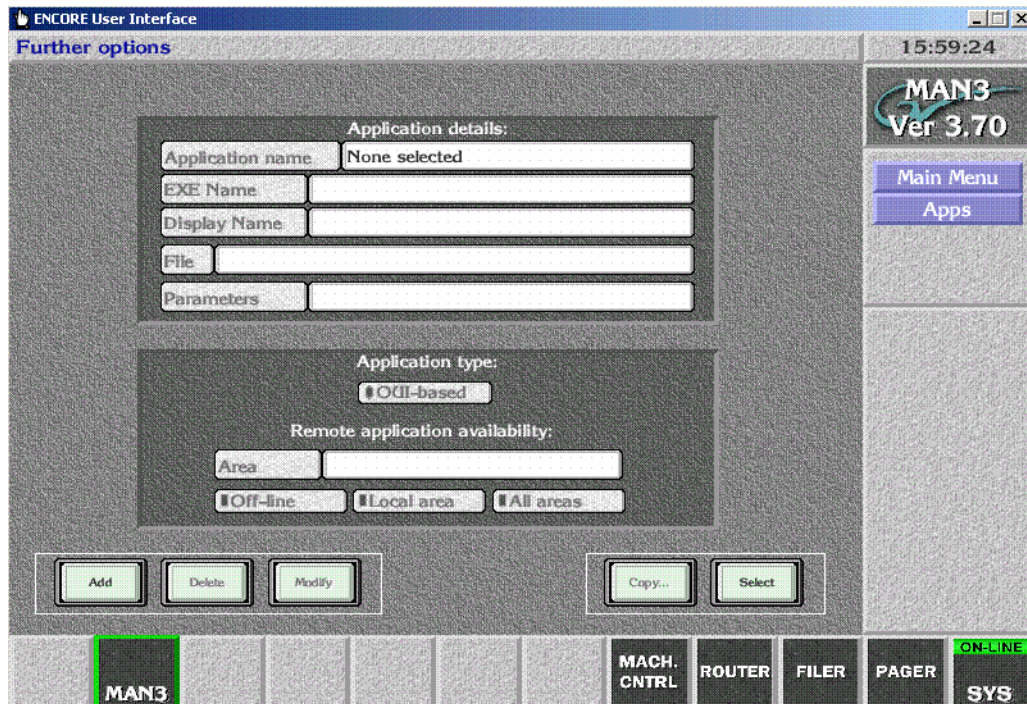


**Note** If a **No Engines Available** message appears, make sure the System Manager application is running on the Kalypso system Windows NT desktop.

## Add Application for VTR Control

- Click **Applications** on the task bar on the right side of the Main Menu. The Application Setup window appears.

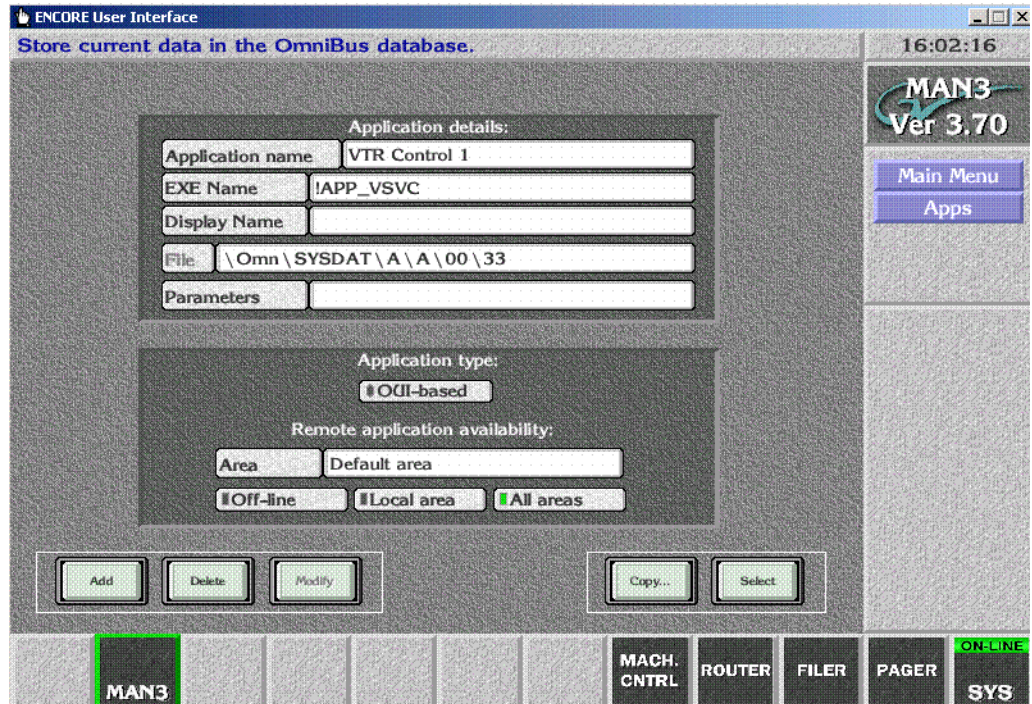
Figure 68. Encore Application Setup Menu



- Click on **Add** in the lower left corner of the window. A pop up window appears asking for the application name. An **!APP\_** prefix that cannot be edited is automatically entered into the window.
- Type in **VSVC** and press **Enter**. A pop up window will appear asking for an application name.
- Type in **VTR Control 1** and press **Enter**.
- Check the **All Areas** box in the middle of the screen so its green light is illuminated.

- Click on **Modify** to save the record to the database. The path will appear in the File field.

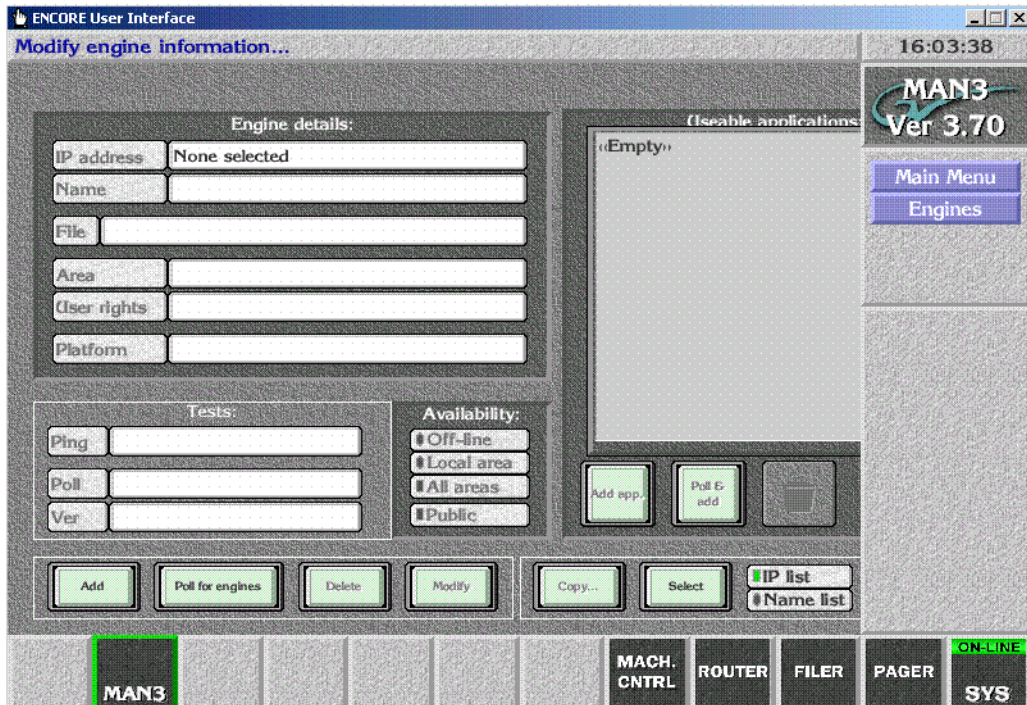
Figure 69. VTR Application Data Saved



## Define Engine the Application will Use

- Click on **Main Menu** in the right menu bar to return to the Main menu, click on **Engines** in the right menu bar (Figure 70).

Figure 70. Encore Engines Menu



- Click on **Add** on the lower left corner of the screen. You are prompted for an IP address. Type the IP address of the Serial Engine you configured earlier (the default Serial Engine IP address often used is 198.162.0.15) and then press **Enter**.

**Note** This IP address must be the same as the Serial Engine's. You can check the front panel display of the Serial Engine for its configured IP address.

- A prompt will then appear asking for an engine name. Type in **VTR Control 1** (same as the application name) and press **Enter**.
- For the Platform, select **Device Control Engine (RISC-OS)**.
- Select **All Areas** under Availability in the lower center part of the screen.

20. Click **Modify** to save the configuration change. The path will appear in the window (Figure 71).

Figure 71. VTR Engine Data Saved



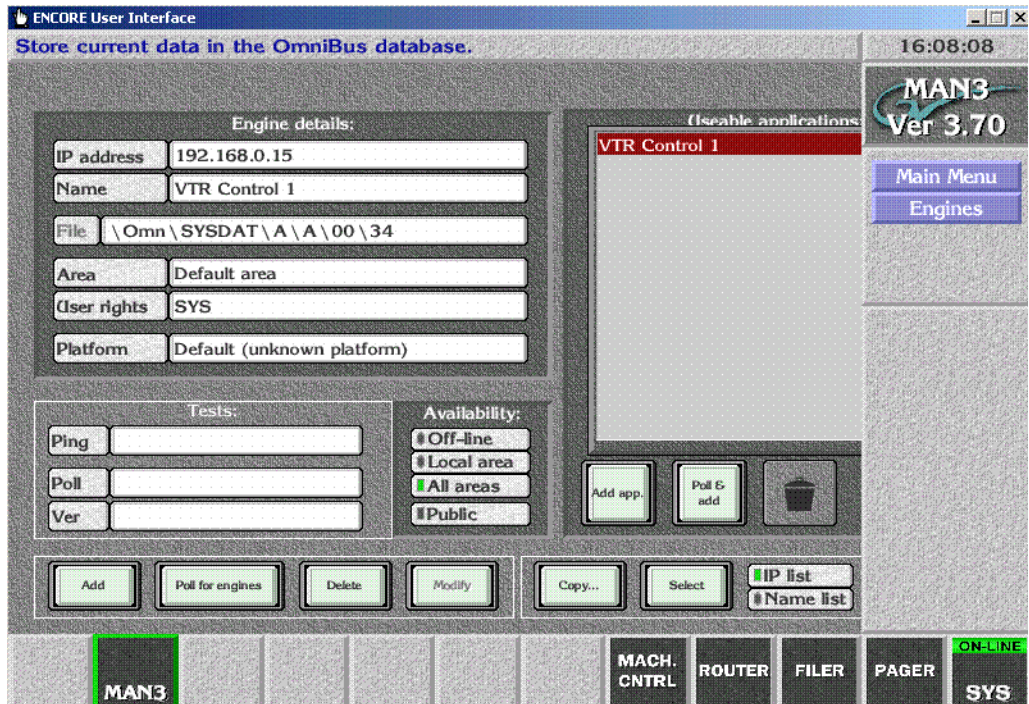
## Add Application to This Engine

These steps tell the Encore system which application that engine can run.

21. Click the **Add App.** button on the lower area of the screen. A list of the current applications will be displayed.
22. Select **VTR Control 1** from the list and press **Enter**. It will appear in red on the Usable Applications list.

23. Click **Modify** to save the configuration (Figure 72).

Figure 72. Application Added to Engine



24. Click **Main Menu** on the task bar on the right, and click **Disconnect** (Figure 72).

Figure 73. System Manager Disconnect

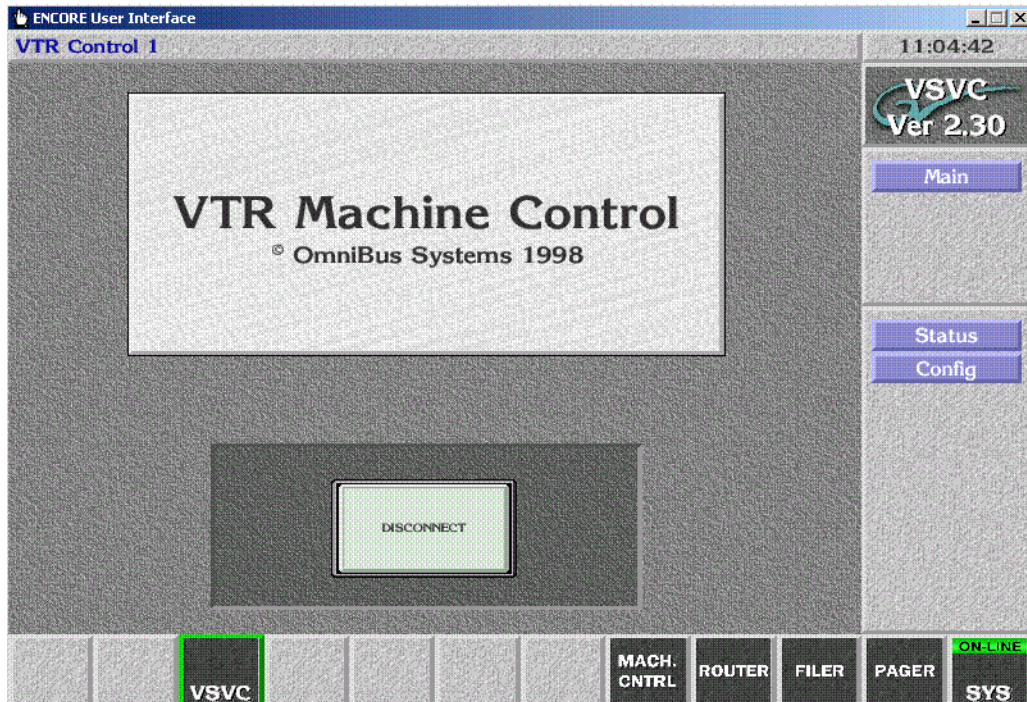


You are now finished defining the Engine and Application.

## Identify VTR

25. On the Encore OUI, click on any blank button at the bottom of the menu, then double click on **VTR Control 1** (Figure 74).

Figure 74. Encore VTR Machine Control

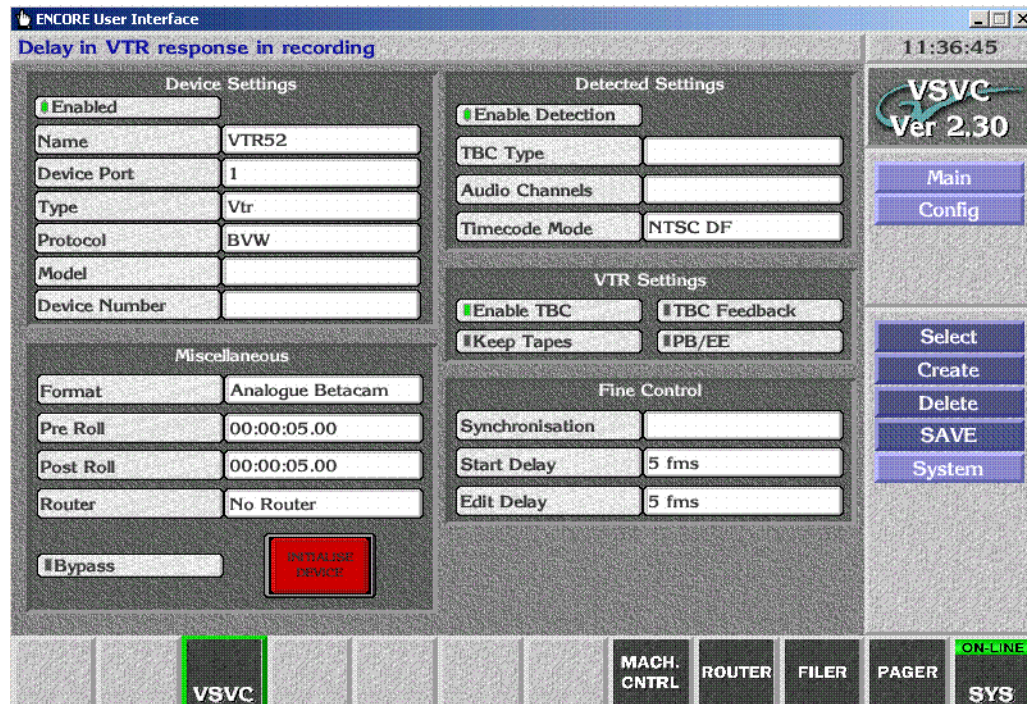


26. Click Config on the right task bar.
27. Click on **Create**, and type in **VTR X** (or whatever name you wish to use to identify that VTR).
28. Click on **Device Port**, and select the port the VTR was connected to on the Serial Engine.
29. Click **Type**, and select **Vtr**. The system automatically detects the type of VTR and displays this information on the screen.



30. Make sure **Enabled** is on in the upper left corner (Figure 75).

Figure 75. VTR Identified

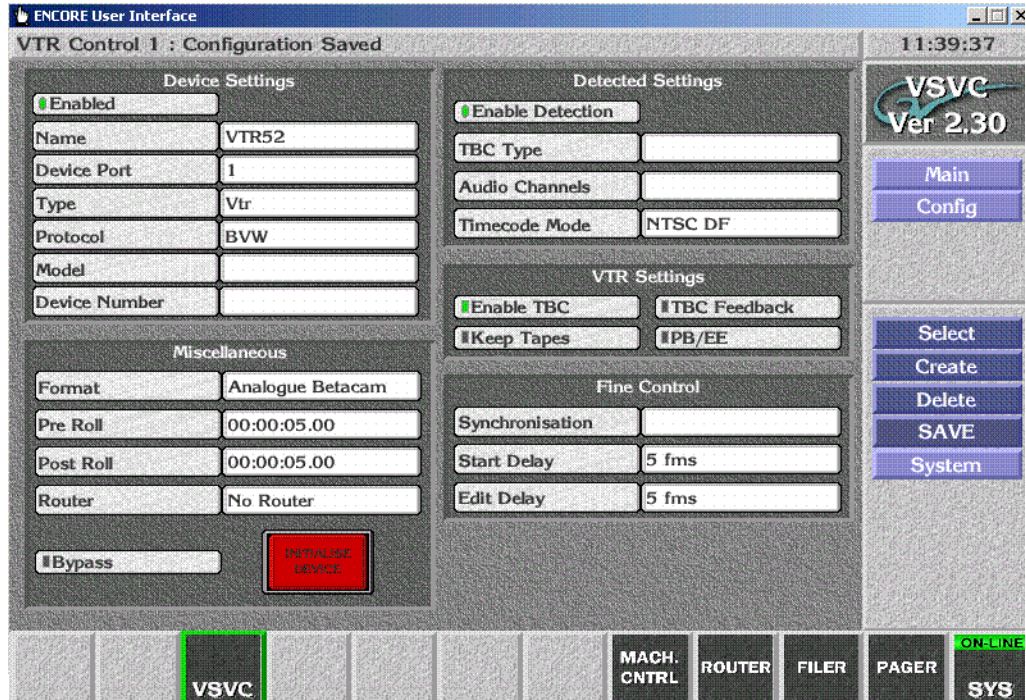


31. Repeat steps Step 27 through Step 30 for each VTR connected to the Serial Engine ports.

## Save Configuration

32. Save the config by clicking on **SAVE** in the right task bar. A Configuration Saved message will appear (Figure 76).

Figure 76. VTR Configuration Saved



33. Click **Main** on the task bar on the right, and click **Disconnect**.

This completes the Encore database configuration. You should now test VTR operation using the Encore OUI.

## Test Configuration and Operation

With VSVC installed and the Kalypso and Encore systems configured, you should have machine control from the Kalypso Main panel. Source buttons mapped to devices should no longer have a ? status indicator.

If control is not working properly, you can use the following procedures to test whether the problem resides on the Encore system or the Kalypso system.

### Test VTR OUI Operation

1. Click on the Local **MACH. CNTRL** button at the bottom of the screen.
2. Press the **Add** button on the lower left to display a list of devices.
3. Select a VTR on the list and press **Enter**.
4. Load a video tape into the selected VTR, making sure it is in remote operation mode.
5. Press the Play, Stop, and Rewind buttons on the OUI. Timecode values on the screen should be updated as the tape moves (Figure 77).

Figure 77. Encore Local Machine Control



This test proves that a VTR is under Encore control. You can now test control of the VTR from the Kalypso Main panel.

## Test Kalypso VTR Interface Operation

Test that the VTR can be controlled directly with the Kalypso system.

- Select a VTR to control on the PGM PST B bus (or whatever bus has been delegated),
- Load a VTR into that machine
- Make sure the VTR is in remote operation mode, and
- Play, Stop, Fast Forward, and Rewind the tape using the Kalypso Machine Control subpanel.

You have now completed the VTR interface installation and configuration for Kalypso control.

**Note** You should now back up the Encore configuration files (see [Saving Encore Machine Control Configurations on page 25](#)).

# *Using the Encore Operational User Interface (OUI)*

## **Introduction**

Kalypso system operators can use the Encore OUI to control external devices independent of the Kalypso Machine Control subpanel. This can be used for troubleshooting (as described earlier in the Profile installation section), or as an additional control mechanism. After installation and configuration, touching **Facility Manager** on the Kalypso Home menu brings up the Encore OUI.

To get the most out of this section, you should:

- Have a basic understanding of media clips,
- Know how files are organized and maintained on the Encore network, and
- Know how to use any remote applications you select.

This section describes how to:

- Use the Encore Operational User Interface (OUI) and local applications,
- Use the Local Machine Control Panel to work with clips on networked devices,
- Use the Filer-Fax to manage files, and
- Use the OmniPager to send short messages around the network.

**Note** The exact capabilities of your Encore system may vary. Refer to the separate Encore Control System documentation for information about features not covered in this section.

# Common Display Features

## Encore Desktop

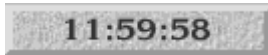
When you logon to the system, the Encore Desktop appears (Figure 78).

Figure 78. The Encore Desktop



This is the help bar

**Help Bar** — As you move the mouse pointer around the screen, the Help Bar displays information on the areas it passes over.



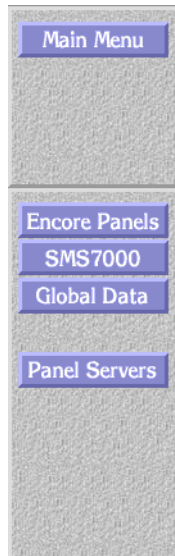
**Clock** — Click the Clock in the top right corner of the Desktop to show or hide the Menu Bar. The Menu Bar appears to the right on the Desktop.



**Title Box** — The Title Box displays the name of the currently active application. Click the Title Box to view the status information your workstation.



**Task Bar** — When an application is open, its icon shows on the Task Bar. To load an application, click its icon. You can switch between applications by clicking different icons.



**Menu Bar** — The Menu Bar has an upper and a lower section. The lowest button in the upper section acts as a heading for the lower section. The buttons on the Menu Bar may be different, depending on the application you’re viewing / using at the moment.

There may be two types of buttons on the Menu Bar:

- Light-blue buttons represent categories; click one to display a further level of options.
- Dark-blue buttons control a specific action. The Menu Bar contents change depending on the category you select from the Main Menu.

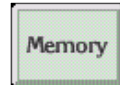
## Buttons



**Indicator Button** — An indicator button has an indicator which changes color when you click the button. The indicator may be a small rectangle or the whole button.



**Greyed-out Button** — You cannot select greyed-out buttons.



**Active Button** — You can select a button that is not greyed out.

## Icons and Windows



**Re-Size Icon** — Use the Re-size icon to alter the size of a window. The icon is in the bottom right corner of the window.

To re-size a window, click the icon and drag the mouse while holding the mouse button down.

To move a window without affecting the size, click-hold on the window edge and drag the mouse.



**Enter/Return Icon** — Click this icon to confirm information you enter. You can also use the **Enter/Return** key on your keyboard for this purpose.

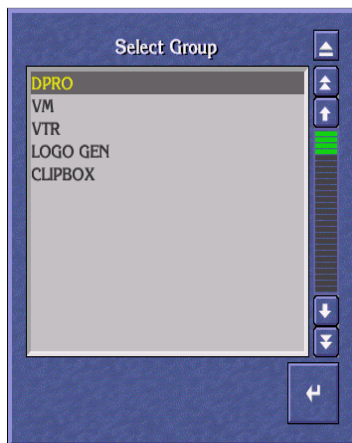


**Eject Icon** — Click this icon to close a window. This icon is located in the top right corner of windows. You can also use your keyboard **Esc** key for the same purpose.







**Alphanumeric Keypad** — You can use the Alphanumeric Keypad to enter text and numbers. Click the keys on the Keypad or use the keyboard of your workstation.



**List Window** — A List window contains a list of items which you can search, view or select.

Click the Single Arrow icons (   ) to scroll up and down the list by one line at a time

Click the Double Arrow icons (   ) to scroll up and down the list by one page at a time

Click and move the green slider bar (  ) to scroll through a list window.

If you press a character on your workstation keyboard, the list scrolls until the first item that starts with that character appears at the top. For example, press M to move to the first item beginning with the letter M.

You can also use the arrow keys and the **Page Up/ Page Down** keys on the keyboard to search.






**Numeric Keypad** — Use the Numeric Keypad to enter time codes.

To enter time codes in frames, click the **Frames** button.

To enter time codes in hours, minutes, seconds and frames, click the **Tcode** button.

Click the double arrow icons (   ) to the left of the window to increase or decrease the time code in one-second steps.

Click the single arrow icons (   ) to the right of the window to increase or decrease the time code by one frame at a time.

Clicking the decimal point (  ) causes a colon (:) to appear in the timecode display so that:

**15** enters as **00:00:00:15** (15 frames)

**15.** enters as **00:00:15:00** (15 seconds)

**15.** enters as **00:15:00:00** (15 minutes)

To enter a Keypad number or function, click a key on the Numeric Keypad graphic, or use your keyboard.

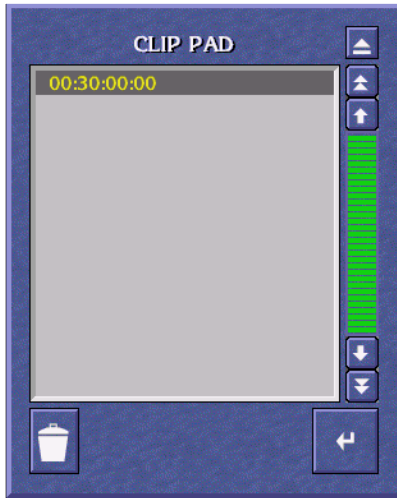
Use the     keys to perform simple calculations.



**Copy To Clip Pad** — Use the **Copy To Clip Pad** icon to copy text or numbers to the **Clip Pad** list window.



**Retrieve From Clip Pad** — Use the **Retrieve From Clip Pad** icon to select the **Clip Pad** so that you can retrieve information.



**Clip Pad** — Use the **Clip Pad** to store useful information. To retrieve a Clip Pad item, highlight it in the list window, then click the **Enter/Return** icon.



**Dustbin Icon** — To remove an entry from the Clip Pad, highlight the item and click the **Dustbin Icon**.

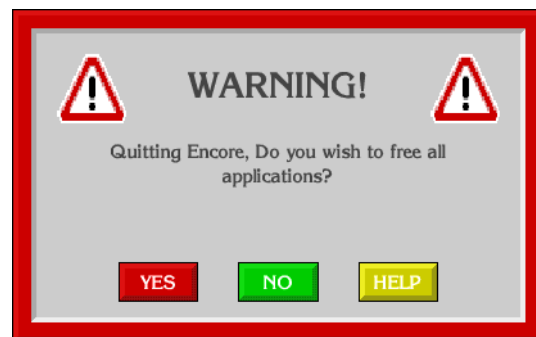
## Messages

### Message Window (with options)

A Message Window may appear when you are using an Encore application. The message may ask you to confirm an action by clicking one of the buttons in the Window.

To continue, click a button; or, using your keyboard, press the first letter of the button name (for example, press the **Y** key instead of clicking the **Yes** button).

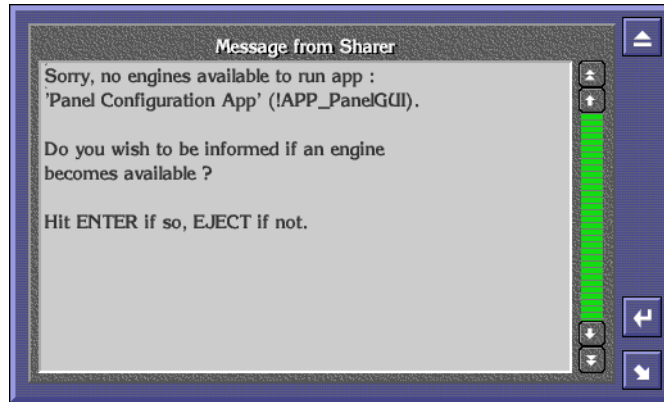
Figure 79. Message Window With Options



## Message Window (without options)

If there are no options, click the window or press the **Enter/Return** key on your keyboard.

Figure 80. Message Window Without Options



## Selecting options

You can usually select options in two ways:

- Double click the required option, or
- Click once to highlight the option, and then press the **Enter/Return** key on your keyboard.

## Procedures

This section describes how to:

- Logon to the OUI,
- Load an application,
- Request an application from another user, and
- Log off the OUI.

## Logging onto the OUI

When you switch on your OUI workstation, the system displays the OUI Logon Screen. From this screen you can logon to your OUI workstation and load the applications you want to use.

1. Click the **Start** button on the right of the task bar. The Logging-On User Identity Box appears.

2. Type your **User Identity** (given to you by the System Administrator) into the User ID Window; then press the **Enter/Return** key or click the **Enter/Return** icon.

You can use either your workstation keyboard or the on-screen Alpha-numeric Keypad. Type either upper or lower case characters — the ID detector is not case-sensitive.

3. Type your password (given to you by the System Administrator); then press the **Enter/Return** key or click the **Enter/Return** icon.

**Note** Password entry is an optional feature, determined by the system configuration; a password-entry window appears only if the option is chosen. The password is case-sensitive — you must type it exactly as it was given to you by the System Administrator.

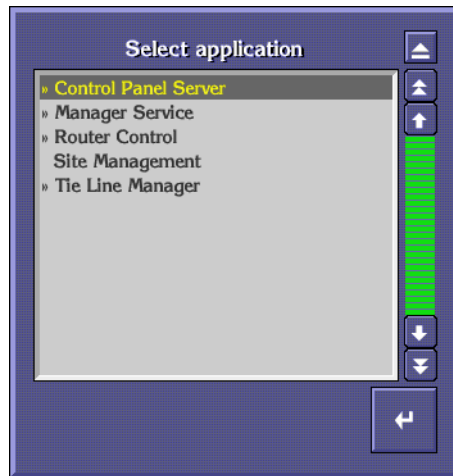
A Welcome to Encore message is displayed, in addition to your user information and any messages entered via the Manager Service (System Manager) application or the System Administrator. Your User Name (or the first part of it) appears on the **Start** button. Icons that enable you to access local OUI applications are displayed on the Task Bar.

Figure 81. Typical Log-On Welcome Screen



4. Press the **Enter/Return** key on the keyboard or click the **Enter/Return** icon. A list of remotely configured (i.e., server-based) Encore applications is displayed in the center of the screen.

Figure 82. Typical Select Application List



**Note** Before you can use a remote application, the necessary hardware and software must be suitably configured and accessible (subject to routing arrangements and password) from your OUI workstation. Refer to your System Administrator if you are having system-configuration problems.

## Loading an Application

After you logon to the OUI workstation, you can load any available and suitably configured Encore application programs.

### Loading a Local Application

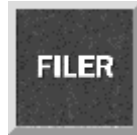
The four OUI local applications are available at all times. To load an application, click its icon in the Task Bar. The icons are shown below with a brief description of the application.



**Local Machine Control Panel** — Provides local control of devices available on the Encore Network and information on the status of selected devices.



**Local Router Panel** — Provides routing facilities between available source and destination devices.



**Filer-Fax** — Provides management facility for all clips on the Encore system as it accesses the Sharer. It is used to filter and select clips to load via the LMCP.



**OmniPager** — This application provides a messaging service between all workstations on the Encore network.

**Note** You can load more than one local application. If you exit an application when more than one is loaded, the screen reverts to the application previously displayed. You can toggle between local applications by clicking the icons in the Task Bar.

## Loading a Remote Application

1. Click a blank button on the taskbar. A list of remote applications is displayed (See [Figure 82 on page 102](#)); those that are available are marked with a double arrow (>>).
2. If the application you require is available, double-click its name in the list (or click once and then click the **Enter/Return** icon).

**Note** If the application you require is not available, you must request it from another user before you can load it (see [Requesting an Application from Another User on page 103](#))

Once the remote application is loaded, its main screen is displayed and its icon appears in the Task Bar. Refer to the application's Reference Guide or Tutorial for information on how to use it.

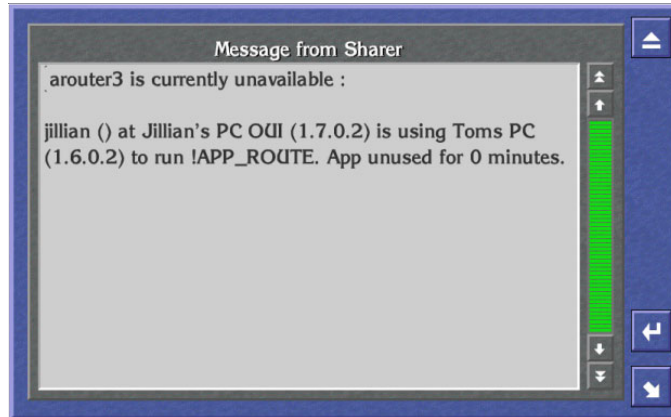
**Note** You can toggle between remote applications by clicking the icons in the Task Bar.

## Requesting an Application from Another User

1. From the list of remote applications, select the one you require by double clicking its name. (You know the application is in use since it is not marked with a double chevron.) The Application Sharer Message Screen is then displayed.
2. Click the **Enter/Return** icon to send a message to the current user, requesting use of the application. The Message Screen disappears.

3. The other user acknowledges the Application Request Message by clicking the **Enter/Return** icon. When the user exits the application, the system sends you a message indicating that the application is available.
4. You can load the application as described in *Loading a Remote Application* on page 103.

Figure 83. Typical Application Message Sharer Screen

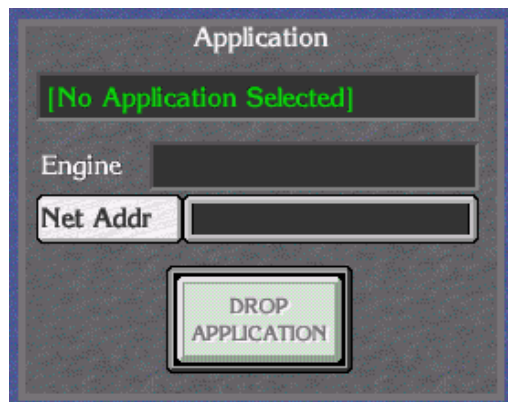


**Note** If you do not need the application urgently, click the **Eject** icon - no Application Request Message is sent.

## Dropping an Application

1. Click the Title Box to display the OUI Station Status Window. The OUI shows the application currently in use in the Application Area.
2. Click the **Drop Application** button. If more than one application is open, then the OUI shows the last application used. Continue to click the **Drop Application** button until you close the applications you want to.
3. Close the window by clicking the **Eject** button.

Figure 84. Application Section of the OUI Station Status Dialog Box

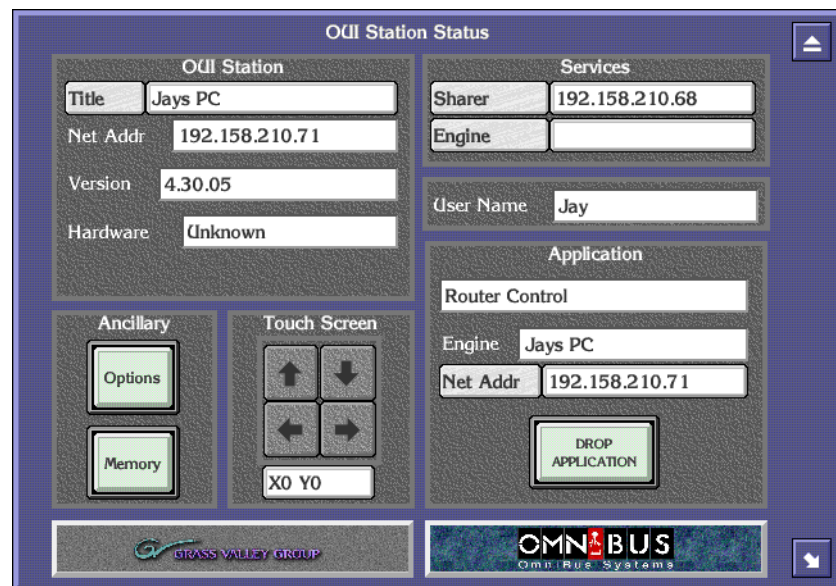




## OUI Station Status Window

To display the OUI Station Status Window from the Encore Desktop, click the Title Box.

Figure 85. OUI Station Status Window



The OUI Station Status Window has five areas:

**OUI Station** — The OUI displays the name of the workstation that you are logged onto, its IP address and the version number of the OUI that is running.

**Ancillary** — This has two buttons, **Memory** and **Options**. If the OUI is running on an Acorn workstation, click the **Memory** button to view memory-usage details. For more information about the **Options** button, see [Ancillary Options](#).

**Touch Screen** — This enables you to adjust the settings of an attached touch screen.

**Services** — Click the buttons in this area to confirm that the Sharer and a specific engine are online.

**Application** — In this area, the OUI displays details of the remote application currently highlighted on the Task Bar.

## Ancillary Options

Figure 86. Ancillary Options



Click the appropriate button:



**Prompts to help bar** — Display error prompts and messages on the Help Bar.



**Swipe Menu Bar** — Switch off the Menu Bar if it overlaps other items on the screen. Otherwise, the OUI permanently displays the Menu Bar. With the option chosen, you can cause the Menu Bar to appear and disappear by clicking the Clock in the top right corner of the Desktop.



**Number dialogues show days** — Show time codes, if they are longer than 24 hours, in the format days:hours:minutes:seconds:frames. For example, 1:16:32:19:10. Otherwise, the system shows time codes as hours:minutes:seconds:frames. For example, 40:32:19:10.

**Enable direct text entry** — Allows you to type entries directly into fields in the OUI. When this feature is disabled, clicking those same fields opens a separate dialog for data entry.



**Layout1, Layout2** — Choose different keyboard layouts. The OUI displays a list of keyboard options.

ARC Serial	
Serial Port 1	AVS Panel Protocol
Serial Port 2	Not set

**ARC Serial, Serial Port 1, Serial Port 2**— Set up Encore hardware devices on the serial ports of your workstation. The OUI displays a list of hardware devices.

Shortcut List	z dmd shortcuts
---------------	-----------------

**Shortcut List** — Record one or more actions to replay later. When you click this button, the OUI displays the Shortcut Key Editor. See *Shortcut Key Editor* and *How to Create a Shortcut or Macro* on page 108 for more details.

## Shortcut Key Editor

Use the Shortcut Key Editor to create and maintain shortcuts and macros.

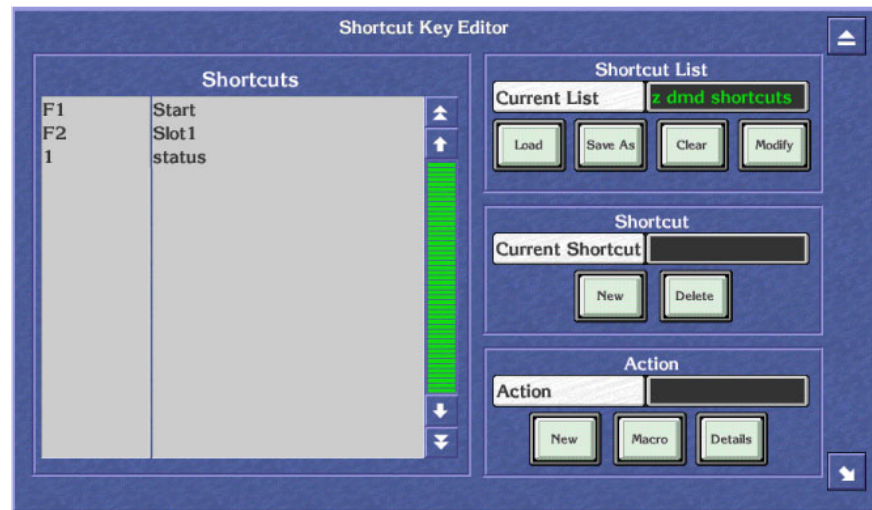
- A shortcut is a single action you record to replay later.
- A macro is a sequence of actions you record to replay later.

You can replay shortcuts and macros as many times as you want.

To display the Editor from the Encore Desktop, follow these steps:

1. Click the Title Box. The OUI Station Status Window appears.
2. Click the **Options** button.
3. Click the **Shortcut List** button. The OUI displays the Shortcut Key Editor.

Figure 87. Shortcut Key Editor



The list on the left shows the shortcuts and macros currently assigned to function keys.

## Shortcut Key Editor Buttons

Use the Shortcut Key Editor buttons to perform tasks:

### Shortcut List

**Load** — Load a shortcut list. The system displays shortcut lists from which you can select the one you want to load. Note: The OUI saves this setting when you switch off your workstation.

**Save As** — Save the current shortcut list with a new name.

**Clear** — Delete the current list.

**Modify** — Save changes to the list.

### Shortcut

**Current Shortcut** — Assign a function key to a shortcut or macro.

**New** — Create a new shortcut or macro.

**Delete** — Delete the highlighted entry in the shortcut list.

### Action

**Action** — Change the name of the shortcut or macro. Warning: If you change the name of a macro, make sure you change the name to that of an existing macro.

**New** — Record a new shortcut or macro.

**Macro** — Load a previously saved macro. The OUI displays the currently loaded macros in the Shortcut list in the left of the window.

**Details** — Displays a list of the actions in a shortcut or macro.

## How to Create a Shortcut or Macro

1. In the Shortcut Area, click the **New** button. A blank entry with the name "None" appears in the Shortcut list on the left.
2. Click the **Current Shortcut** button. Enter the function key you want to assign to the shortcut or macro (for example, F1, F2 etc.). Alternatively, press the appropriate function key on your keyboard.
3. In the Action Area, click the **New** button. The system displays the Action Box which has four buttons — from left to right, **Record**, **Stop**, **Play** and **Enter**.

4. Click the **Record** button to start recording.
5. Perform the action (or actions) you want to record.
6. When you finish, press the **Stop** button.

**Note** If you want to replay your shortcut or macro to check it, press the **Play** button.

7. When you are satisfied with your shortcut or macro, press the **Enter/Return** button.
8. Enter a description for your shortcut or macro.

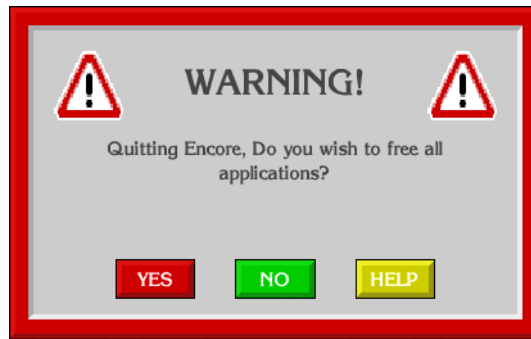
**Note** If you performed more than one action, the system displays the Save Macro Filer-Fax to allow you to save your sequence of actions as a macro. Click the **Name** button and enter a name for your macro. Press the **Enter/Return** key; then press the **Save** button.

9. In the Shortcut List Area, click the **Modify** button to save the shortcut or macro to the currently loaded list. To save the shortcut to a new list, click the **Save As** button.

## Logging off the OUI

1. Click the **Start** button on the right of the Task Bar.
2. The system displays a warning message.
3. Do one of the following:
4. Click **YES** (or press **Y** on your keyboard) to log off.
5. Click **NO** (or press **N** on your keyboard) if you do not want to log off.
6. Click **HELP** (or press **H** on your keyboard) if you require help.
7. If you select **YES** the system exits all the applications you have been using, leaving remote applications free for other Users. The workstation returns to the OUI Logon Screen.

Figure 88. Log Off Warning Message



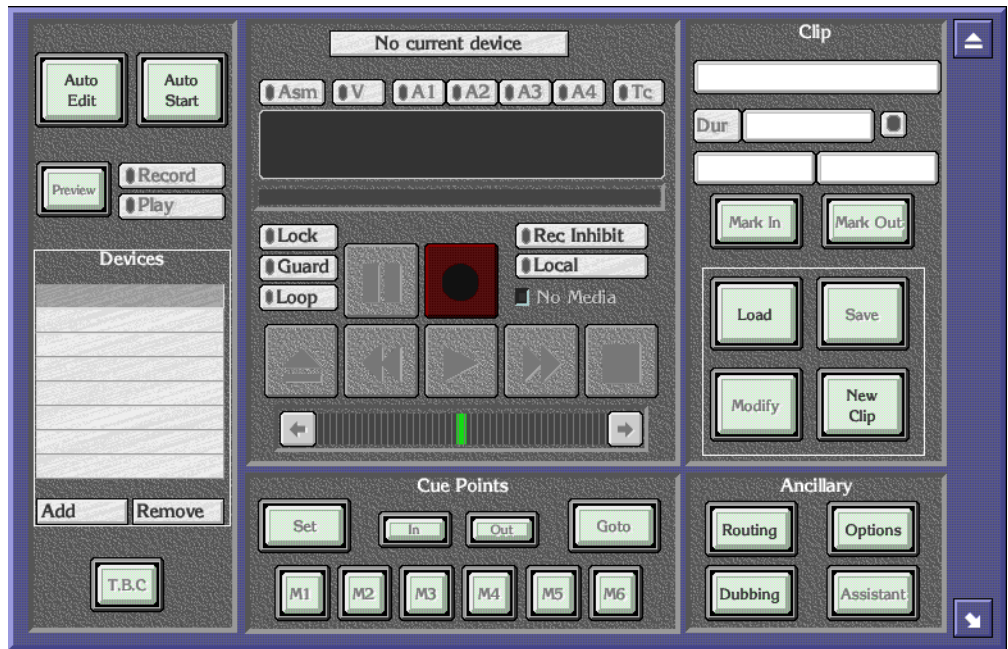
**CAUTION** Before you turn off your workstation you must close down each remote Encore application by selecting either the **Disconnect** or **Drop Application** option to allow other Users access to those applications.

## Local Machine Control Panel (LMCP)

The Local Machine Control Panel provides local control of the devices that are available on the Encore Network. It also provides information on the status of selected devices.

**Note** To use the LMCP you must have the proper software, and in some cases hardware components or peripherals, properly installed and configured on the device you wish to control. For example, to control a Grass Valley Group Profile, you must purchase, install, and configure the optional VDRCS application. Similarly, to control a VTR you must purchase, install, and configure the Serial Control Engine peripheral, the VSVC application, and an RS-422 serial (machine control) cable.

Figure 89. Main Screen



The LMCP Main Screen has five areas:

- Device Selection area,
- Device Control area,
- Cue Points area,
- Clip area, and
- Ancillary area.

## Opening the LMCP



Click the Local Machine Control Panel icon on the Task Bar.

## Clip Area

The Clip Area displays information about the current clip, and enables you to work with clips. The information shown is **Clip Name**, **Duration**, **In Point** and **Out Point**.

Click the **Hold Duration** indicator button (to the right of the **Dur** Window) to toggle it on or off. When the button shows green, the clip duration remains constant. When the button shows black, the clip duration changes if the In/Out-Points change.

## Creating a New Clip on a Video Disk Server

1. Load a disk device into the Devices panel.
2. Click the **Create** button. The system displays the Clip types list window.
3. Select the type of clip you require.
4. Click the **Enter/Return** button.
5. The window disappears and the system displays the Filer-Fax in save mode. You can name the clip, categorize and save it (see [Filer-Fax on page 121](#) for more information).

**Note** If the selected device is a VTR, or if no device is selected, then the **New Clip** button is displayed in place of the **Create** button (see [Creating a New Clip on a VTR](#)).

## Creating a New Clip on a VTR

1. Load a VTR device into the Devices panel.
2. Click the **New Clip** button. The system displays the Clip types list window.
3. Select a type for the new clip; then press the **Enter/Return** button.
4. The system shows the default values for the selected clip type.

## Loading a Clip

1. Click the **Load** button. The Filer-Fax appears.



2. Highlight the clip you want to load.
3. Click the **Enter/Return** button. The clip information appears in the Clip Area.

**Note**     [Step 4](#) applies only if no device is selected in the Devices panel.

4. When the Select a Device list window appears showing devices that can load a clip, select one of the devices.

The Select a Device list window disappears. The system adds the device to the Devices panel and loads the clip.

**Note**     If you select 'No Device: Clip Data Only' from the list, a device is not added to the Devices panel but the clip data is still displayed. You can therefore alter the clip information rather than the media. Use this method of selecting a clip if you do not know whether a clip is on a tape or a disk.

## Modifying Clips

1. Click the **Mark In** button to change the in-point of the clip. The in-point will be changed to the time code reached at the moment you press the **Mark In** button.
2. Click the **Mark Out** button to change the out-point of the clip. The out-point will be changed to the time code reached at the moment you press the **Mark Out** button.
3. To rename a clip, click the **Clip Name** window and enter a new name on the displayed Keypad.
4. To save a clip, see [Saving a Clip](#).

**Note**     New in-points and out-points are not recorded unless you modify or save the clip.

## Saving a Clip

Either:

1. Click the **Modify** button to save over the current clip.

Or:

2. Click the **Save** button to save a new instance of the clip.

## Device Selection and Control

The Device Selection Area consists of an 8-slat panel for selecting and displaying the names of up to eight devices, and two buttons to add or remove devices to or from the list.

## Setting Options

Before you can select options for a device, you must add them to the Devices panel.

### Adding a device

1. Highlight an empty slot.
2. Click the **Add** button to display the devices list window.

If **Use Object Database** is switched off in the Ancillary Options window (the Button indicator shows black), the list shows all devices (Video Disk Servers and VTRs) currently available on the network.

If **Use Object Database** is switched on (the Button indicator shows green), the listed devices will be ones which are configured within the object database; any given one of these may or may not be available on the network — the system will check when you select one.

3. Select the device you require by highlighting it and pressing return.
4. Once a device is selected, the list window disappears and the new device name is shown in the Devices panel.

### Removing a Device

1. Highlight the slot displaying the device you want to remove.
2. Click the **Remove** button.
3. The button then becomes blank and is free for another device.

## Automatic Control

Using automatic control it is possible to record from a live feed to more than one destination at once, or to transmit several clips simultaneously. It is also a useful way of copying a clip to different locations.

### Playing and recording clips

1. Add the devices you require to the Devices panel and lock them.
2. Route the required sources to the correct destinations.
3. To record, you must create a clip for each device; to play, load a clip to each device. You can execute both operations together providing the resources required are available.
4. Click the **Record** button to record, or the **Play** button to transmit.
5. Click the **Auto Start** button to automatically start all devices. The button text changes to **Auto Stop**.

6. Click the **Auto Stop** button to automatically stop all devices.

### Copying (dubbing) a clip to a new location

1. Add the destination and source devices to the Devices panel and lock them.
2. Load a clip onto the source device and set the play flag.
3. Create a clip on the destination device (see *Creating a New Clip on a Video Disk Server on page 112*), give the clip an appropriate duration and set the record flag.
4. Ensure that you route the source to the correct destination.
5. Click the **Auto Edit** button to automatically start the devices. The button becomes yellow while devices are cueing. The button becomes green once cueing is complete.
6. When the edit is complete, click the **Auto Edit** button.

**Note** You can execute this action by using the **Auto Start** button. The LMCP always refers to the currently selected device, even if another user has locked the device.

## Time Base Correction Panel

If the currently selected device is a VTR, click the **T.B.C.** button (Time Based Corrector) to display the **T.B.C.** window. You can adjust the output levels of the signals by using this panel. Click the scroll bar or the arrows on either side. Move the bar to the right to increase the level. Move the bar to the left to decrease it.

Figure 90. Time Base Correction window



### Setting Time Base Correction

1. The **Preset** indicator button shows if the default setting is on (indicator shows green) or off (indicator shows black) and can be selected for individual signals. If a signal is using the preset value, changing this value automatically switches off the preset option.

2. Click the **Video** button to adjust the output level of the video signal. This can be regarded as adjusting the brightness.
3. Click the **Chroma** button to adjust the output level of the chrominance signal. This can be regarded as adjusting the color.
4. Click the **Y/C Delay** button to adjust the Y/C delay. This can be regarded as adjusting the synchronization between the luminance and chrominance.
5. Click the **Black Level** button to adjust the black level. This can be regarded as adjusting the darkest part of the picture, which has reference 'Black'.
6. Click the **Chroma Phase** button to adjust the chroma phase. This can be regarded as adjusting the hue.

## Using the Device Control Area

This area of the screen is used to control the device currently selected in the Devices panel. The identity of the device is shown in the label at the top of the Control Area.

The **Guard** button disables all the control buttons. It prevents you operating the controls accidentally; for example, pressing **Stop** when a clip is playing to air. While the button is activated the control buttons are greyed out. The indicator shows green if the device is guarded, and black if it is not.

The **No Media** indicator button shows if a VideoDisk has a clip currently loaded or if a VTR device has a tape loaded. The indicator shows green if the device is empty, and black if it is loaded.

The **Rec Inhibit** button shows if the currently loaded clip can be recorded into or edited. The indicator shows green if recording is inhibited; it shows black if you are able to overwrite or edit the clip.

The **Local** button shows if the currently selected device can only be operated locally. The LMCP enables you to operate a device remotely, but circumstances may be such that a device must be operated locally. For example, an engineer may require it for maintenance purposes. The indicator shows green if the device can only be operated locally; it shows black if you can operate it remotely.

The **Time code Display** window shows the time code status of the currently selected device, even if another user has locked it.

You can use the Clip Progress Bar (located directly below the Time code Display) to move quickly to an approximate position in the clip that is currently playing and pause the clip there.

## Transport Control Buttons

The transport control buttons represent the buttons of a video tape recorder: clicking the **Pause** button pauses the currently selected device, clicking the **Play** button plays the loaded clip, and so on. When you click a button it shows white. The button is automatically deselected and shows grey if you click another button.

### How to Record Using the Transport Control Buttons

**CAUTION** The procedure you should follow depends on the device you have installed. We describe a typical procedure below, but it may not apply to your installation.

1. From the Devices panel select a device to record to (destination device).
2. Select which tracks to record with the **Recording Mode Selection** indicator buttons.
3. Click the **Lock** indicator button to lock the device if this is required.
4. Click the **Create** button. The system displays a list of clip types.
5. Choose a clip type. The system displays the Filer-Fax.
6. Select the categories you require. See *Filer-Fax* on page 121 for more information.
7. Save the clip by pressing the **Save** button.
8. Click the **Preview** indicator button to switch it on (button becomes green), or off (button becomes grey) as required.
9. The currently selected device is ready to record. Click the **Record** button to start recording.
10. The LMCP records into the clip you created using whatever source is routed to the destination device.

### How the other controls respond

Clicking the **Eject** button ejects what is loaded in the currently selected device; the button shows white. Any information referring to the clip in the Clip Area disappears. If the selected device is a VTR, the tape is ejected.

Clicking the **Rewind** button rewinds the clip that is loaded in the currently selected device; the button shows white. Once rewinding is complete, the **Rewind** button shows grey and the **Pause** button is automatically selected and shows white.

Clicking the **Play** button plays the clip in the currently selected device — the button shows white. Once play-out is complete, the **Play** button shows grey and the **Pause** button is automatically selected and shows white.

Clicking the **Fast Forward** button fast-forwards the clip that is loaded in the currently selected device; the button shows white. Once fast-forwarding is complete, the **Fast Forward** button shows grey and the **Pause** button is automatically selected and shows white.

Clicking the **Stop** button stops the currently selected device; the button shows white.

The **Shuttle Bar** provides incremental control of the currently selected device.

## Cue Points Area

The Cue Points Area enables you to recall a clip at relevant points within the clip. The functions of the different buttons are described below.

## Using the Cueing Control Buttons

1. Load a clip.
2. Play the clip.
3. Click the **Set** button so it becomes green.
4. Click one of the **Cueing Control (M1 to M6)** buttons to store the time code of a point in the clip. The **Set** indicator button becomes grey. (You can pause the clip at the point before storing the time code if you want to.)
5. Click the **Set** button (so it becomes green) and then a **Cueing Control** button for each time code you want to store.
6. While the **Set** button is grey, clicking a **Cueing Control** button pauses the clip at the stored time code.
7. Click the **GoTo** button and enter a time code in the Keypad displayed. The clip pauses at that time code.
8. Click the **In** button or the **Out** button to pause the clip at the marked-in or marked-out point.

**Note** The Cueing Control buttons store the time codes you allocate to them. The time codes are not stored with the clip, and are only retained during the LMCP session in which you define them. They are lost if you overwrite them or if you switch the OUI workstation off. If you load a new clip, the stored time codes apply to this also.

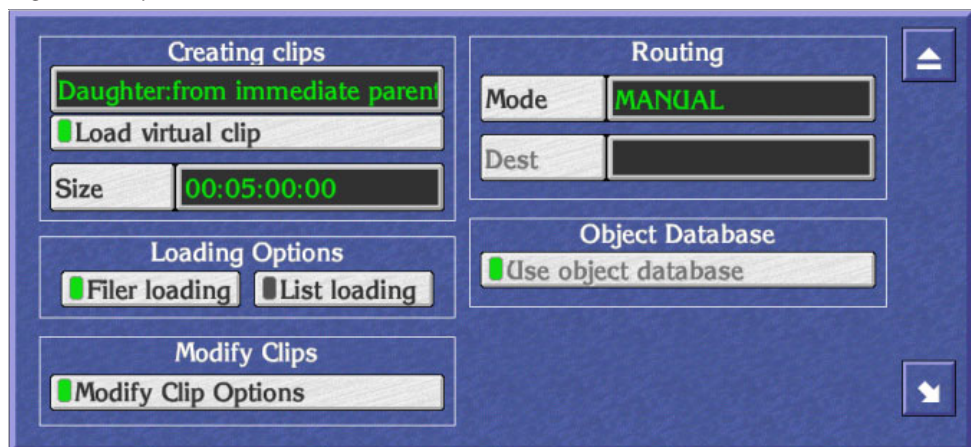
## Ancillary Area

The buttons in the Ancillary Area are used to access specific functions of the LMCP application.

### Options button

1. Click the **Options** button to display the Options window.
2. Click the first button bar to select the option for creating daughter and clone clips.
3. Switch on the **Load virtual clip** indicator if you want to activate this option.
4. Click the **Size** button to set the default duration of a new clip.
5. Select either the **Filer Loading** or **List Loading** option by clicking the respective indicator buttons; an indicator shows green to highlight your choice. (See *Filer-Fax* on page 121).
6. Switch on the **Modify Clip Options** button (so its indicator shows green), if you want the system to update the current clip options when you change the clip type. If you do not switch it on, the system leaves the clip options unchanged.
7. Click the **Mode** button to select the routing option required; the selected option is displayed in the button bar.
8. If you select Auto Mode, click the **Dest** button to display the Router Destinations list window and select one of the available router destinations. The one you select is shown next to the **Dest** button. If you select Manual Mode, the **Dest** button is unavailable.
9. Select **Use object database** if you want the LMCP to use the object database — you need special system privileges to change this setting.

Figure 91. Options window



## Exiting the Local Machine Control Panel

You may exit the LMCP at any time by clicking the **Eject** icon in the top right corner of the screen.

### Memory of the LMCP

When you switch off the OUI workstation, the system saves all of the LMCP options.

### Remote control of the LMCP

Another application such as Lines Record may remotely open an LMCP display with devices that it chooses. When it does, it displays an **alt** LED at the top of the device selection panel and disables the Add button. Devices already in the LMCP are not removed. You can return the original LMCP display either by clicking the LMCP icon on the Task Bar or by pressing the up arrow key on the keyboard.



# Filer-Fax

## Filer Mode Vs. List Mode

**CAUTION** The Encore client residing on the Kalypso frame works in **List loading** mode. If the Encore system Mach Cntrl application is set to **Filer loading** mode the listing of clips seen from the Mach Cntrl tab of the Encore OUI will differ from those seen on the Kalypso system panel and menus.

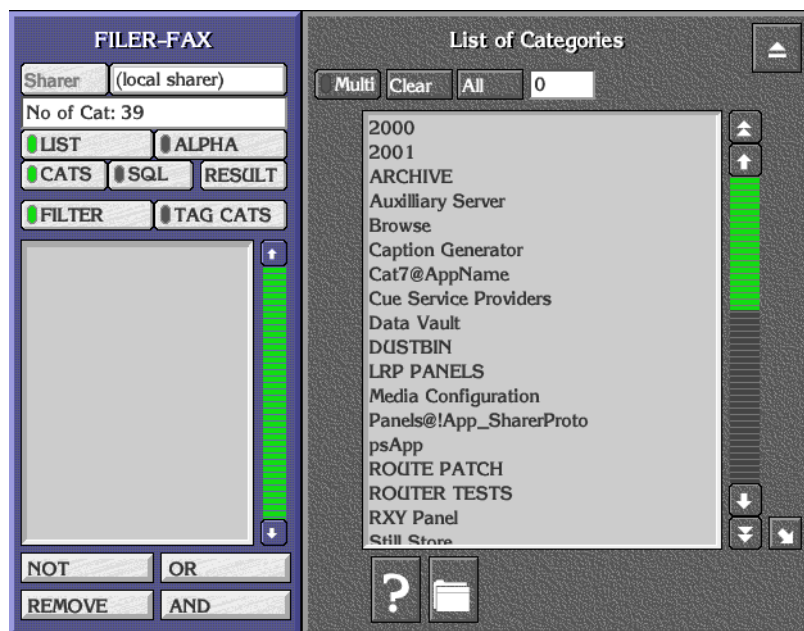
If the Encore system is being used only as a machine control interface for Kalypso, the Filer loading mode view will probably not show any clips, since they must be registered with the Encore/Omnibus sharer. However, using Filer loading mode can be beneficial in some cases, especially if an Encore/OmniBus system is used for facility and asset management. In this case the Encore OUI can be used to load clips based on that view, then the Kalypso system can manipulate the loaded clip.

The loading mode is set in the Encore Mach Cntrl application by selecting the **Options** button in the Ancillary pane, then choosing either **Filer loading** or **List loading**.

## Filer-Fax Overview

The Filer-Fax enables you to manage clips and other files on your Encore System. Use the Filer-Fax to filter and select clips to load via the LMCP.

Figure 92. Typical Main Screen



The Filer-Fax Main Screen has:

- A filter window and control buttons on the left.
- A list window (showing either categories or files) on the right.

## Opening Filer-Fax



Click the Filer-Fax icon on the OUI Task Bar to load the Filer-Fax.

## Multi-Domain Networks

A multi-domain network is a network with more than one Sharer. In a multi-domain network, you can use Filer-Fax to manage the files that reside on Sharers other than your local Sharer; that is, files in other domains.

To work with the files on a particular Sharer, click the Sharer button. Select a Sharer from the list displayed by the application.

## File-Maintenance Mode

The Filer-Fax opens in file-maintenance mode. It displays a screen which is used to show files from selected categories and to perform file-management tasks; for example, tagging files to certain categories. Through the use of filters it is possible to select files with similar properties.

### Filtering

You can view certain types of file by specifying categories. This is known as filtering and is done by applying Boolean Logic to the categories. You use the Boolean operators AND, OR, and NOT to define the filter; these appear in the filter window between '<' and '>' symbols. The following example illustrates filtering.

Suppose only three files and three categories exist, and the files are tagged to the categories as shown in this file categorization example.

		News	Sport	1997
Files	Clip A	X	X	X
	Clip B	X		X
	Clip C		X	X

The following table shows examples of filters you could create and the corresponding files which would be displayed.

Filter Applied	Files Displayed
1997	Clip A, Clip B, Clip C
News <AND> Sport	Clip A
News <OR> Sport	Clip A, Clip B, Clip C
News <NOT> Sport	Clip B

An example of a more complex filter is:

News <AND> 1997 <NOT> Sport <OR> Travel

This displays all News stories from 1997, apart from Sport, and all Travel stories.

**Note** The application interprets the filter logic from left to right (or from top to bottom as the categories appear in the filter window).

The simplest filter is a single category. From the List of Categories, you select one by: either double-clicking it; or highlighting it and pressing the **Enter/Return** key on the Keyboard. The files tagged to that category appear in the File Maintenance window.

You can modify the filter by displaying the List of Categories, highlighting the required category, and clicking a **Logic** button.

**Note** The system automatically tags some files to certain categories, depending on the file type and the application used to create the file. It is not possible to remove a system category from the filter if it has been added by an application.

## Automatic Filters

The **DUSTBIN** and **ARCHIVE** categories are used in a special way. They are automatically added to every filter by default, and are preceded by the logical flag <NOT>. So the filter always requests the files not dustbinned and not archived. Archived files appropriate to the filter can be added to the File List by switching on the **ARCHIVE** button in the File Maintenance window.

**Note** The **DUSTBIN** and **ARCHIVE** categories can also be added to the filter by explicit instructions from you; e.g., if you wish to view only the archived files which match the filter, you must add <AND> ARCHIVE to the filter.

## Filter and Tag-Cats Modes

You can toggle the **FILTER** and **TAG CATS** buttons to show two different views of the database; this enables you to tag and untag files to and from different categories.

## Logic Buttons

When you select a category and add it to the filter using the **NOT** button, <NOT> precedes the category in the filter. (You can also use the '-' key on the Keyboard as a shortcut.)

When you select a category and add it to the filter using the **OR** button, <OR> precedes the category in the filter.

When you select a category and add it to the filter using the **AND** button, <AND> precedes the category in the filter. (You can also use the '+' key on the Keyboard as a shortcut.) By default the first category added to the filter is preceded by <AND>.

The **REMOVE** button removes any categories highlighted in the filter window. Double clicking this button clears the filter window.

The **LIST** and **ALPHA** buttons change the viewing format of the file and category lists. Selecting **LIST** formats each list in a plain alphabetical sequence. Selecting **ALPHA** adds **Alpha-Selection** buttons to help you navigate through the list. You can toggle between the two formats by clicking the **LIST** or **ALPHA** button; the button indicator shows green to highlight your choice.

**Note** Clicking an **Alpha-Selection** button displays items beginning with the letters on that button; e.g., the **CD** button displays an alphabetical list of items beginning with the letters 'C' and 'D'. You can also use the Keyboard to navigate through the list.

## Managing Categories with Filer-Fax

Use the Filer-Fax buttons to manage categories:

**CATS** — select the categories you require from the List of Categories. Use the logic buttons (**NOT**, **OR**, **REMOVE**, **AND**) when you select multiple categories.

**Clear** — cancel all selections.

**Multi** — highlight more than one item in the list.

**All** — highlight all items in the list. The system displays the number of items you've selected in the window next to the button.

**Request Information** icon (**F2**) — display the File Information window (single selection only).

**Create Category** icon (**F6**) — name a new category (Category List Window only).

**Archive** button (indicator shows green) — add archived files to the file list.

**Tag/UnTag** icons — tag selected files to/from categories.

### Searching for Files Using Filters

1. Click the **FILTER** button.
2. Click the **CATS** button to show the List of Categories.
3. Select categories to include in the filter; combine them by clicking logic buttons.

The File Maintenance window appears showing the file list that results from applying the filter.

4. Click the **CATS** button and the **RESULT** button to toggle between the List of Categories and the File Maintenance window on the display.

**Note** If you only want to use one category in the filter, double-click its name in the List of Categories while there is no other category in the filter. The File Maintenance window appears automatically, showing the files tagged to that category.

### Tagging Files to Categories

When you select the filter mode (the **FILTER** button indicator shows green), Filer-Fax uses the filter shown in the filter window to produce a list of files in the File Maintenance window. You can then select files from this list and tag them to the categories included in the other filter (which you define for the *tag-cats mode*).

1. Click the **TAG CATS** button.
2. Click the **CATS** button to show the List of Categories.
3. Select one or more categories to which you want to tag files. These appear in the filter window on the left.
4. Click the **FILTER** button.
5. Click the **CATS** button to show the List of Categories.
6. Select categories and use logic buttons to define a filter; this should give you a list of files in the File Maintenance window that includes the one(s) you want to tag.
7. Select one or more file(s).

**Note** Clicking the **Multi** button enables you select more than one file.

8. Click the **Tag** button.

**Note** Each time a filter definition changes, the File Maintenance window appears showing the file list that results from applying the filter. Click the **CATS** button if you want to see the List of Categories; click the **RESULT** button to show the file list.

### Untagging Files from Categories

When you select the tag-cats mode (the **TAG CATS** button indicator shows green), the File Maintenance window shows a list of files tagged to the categories shown in the filter window. You can select files from the list and untag them from these categories.

1. Click the **TAG CATS** button.
2. Check the File Maintenance window appears; if necessary, click the **RESULT** button.
3. Select one or more files you want to untag.

**Note** clicking the **Multi** button enables you to select more than one file.

4. Click the **Untag** button.

### Finding File Information

1. Select a file.
2. Click the **Request Information** button (the one with the question-mark icon) to display the File Information window; alternatively, press **F2** on your keyboard.
3. Use your keyboard if you want to enter information in the Notes window.

### Previewing a File

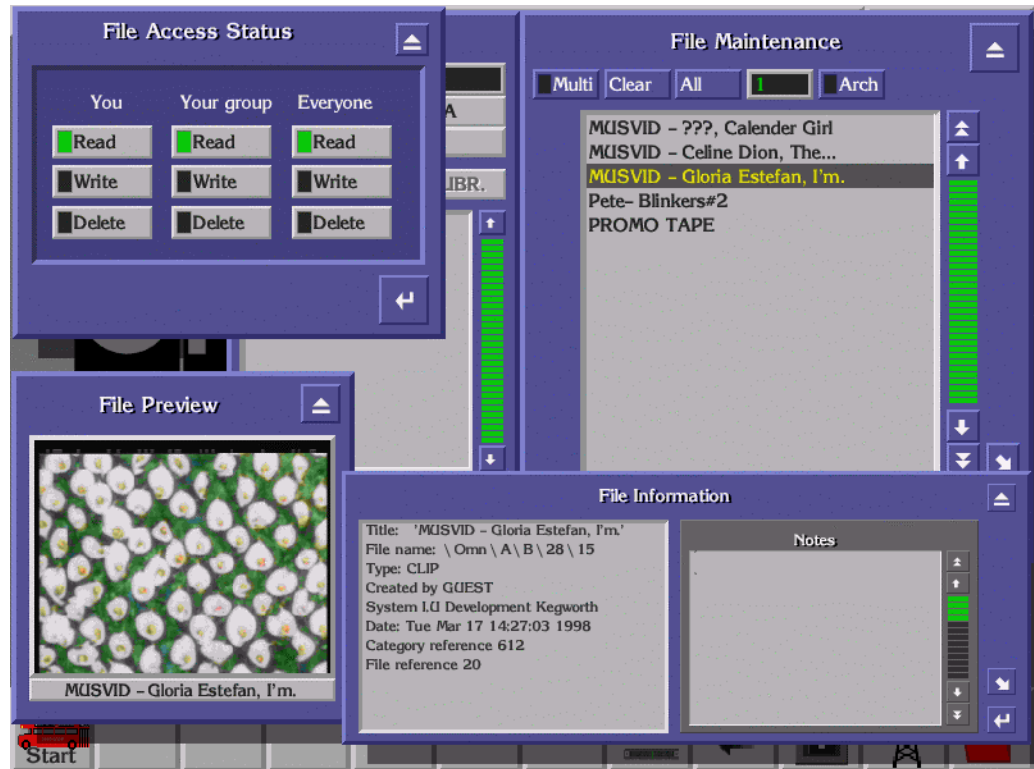
1. Select a file.
2. Click the **Preview** button (the one with the screen icon) to view a MiniPic in the File Preview window; alternatively, press **F4** on your keyboard.

### Security

1. Select a file.
2. Click the **File Security** button (the one with the padlock icon) to display the File Access Status window; alternatively, press **F5** on your keyboard.
3. Click the **Delete** buttons to select deletion rights for the file.

You can view the File Information, File Preview and File Access Status windows simultaneously by sizing and moving the windows to suitable positions on the screen. The information changes as you highlight different files in the File Maintenance window.

Figure 93. Typical Screen Showing Simultaneous Viewing



## Deleting Files

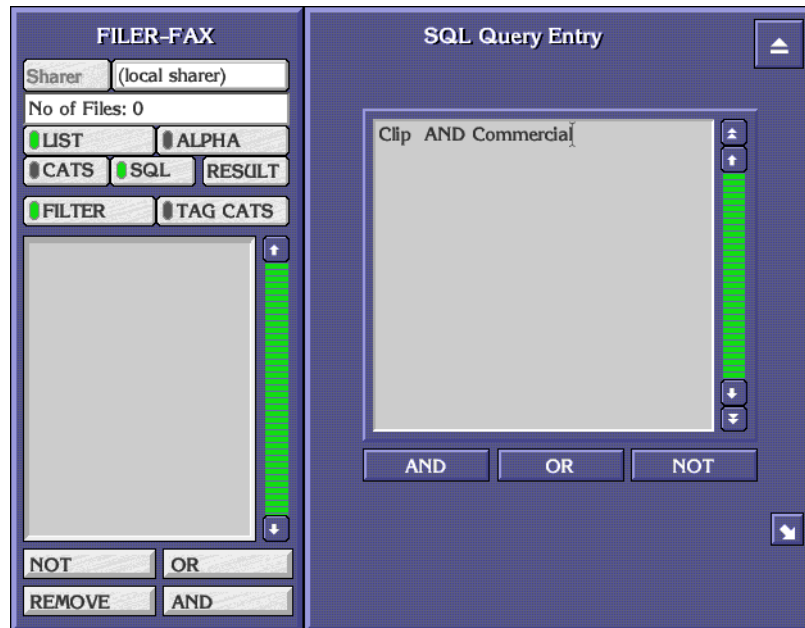
1. From the file list select the file(s) you want to put in the dustbin.
2. Click the DUSTBIN icon (or press **F1**).

## SQL Search

Use the **SQL** button to perform a keyword search. The system searches for and displays files that match a keyword that you enter. You can use the **AND**, **OR** and **NOT** buttons to narrow the search.

1. Select the filter mode: click the **FILTER** button.
2. In the filter window define the filter you want to use for the search.
3. Click the **SQL** button to display the SQL Query Entry window.

Figure 94. SQL Query Entry Window



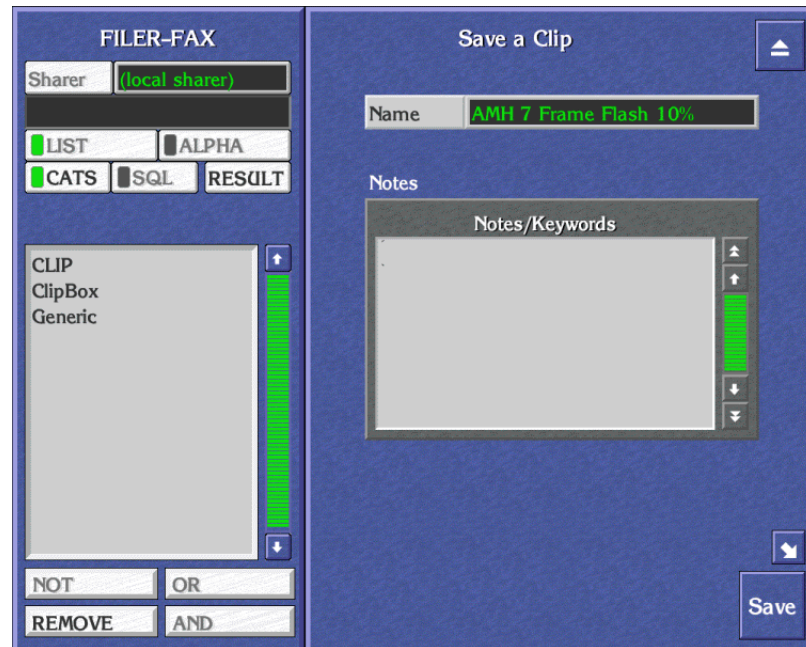
4. Enter one or more keywords in the window; link them with the logic operators (AND, OR, NOT).
5. Click the **RESULT** button. Filer-Fax performs the search and displays the result in the File Maintenance window.

## Save Mode

When saving a file from within another application, the Filer-Fax displays the Save Screen. The filter window shows the categories to which the file is tagged; the Save Area is displayed on the right.



Figure 95. Typical Save Screen



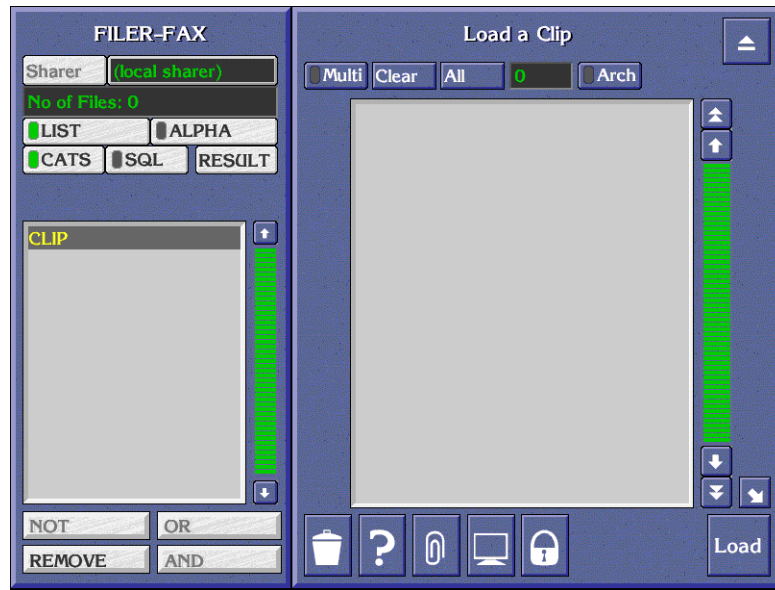
### Saving a file

1. Click the **Name** button.
2. Enter a name on the displayed Keypad. The system displays the name on the **Name** button.
3. In the Notes Area, enter any useful information you want to associate with the saved file. You can tag further clips to the category if you want.
4. Click the **Save** button to save the file. The Filer-Fax Save Screen disappears.

## Load Mode

When you load a file while using an application the Filer-Fax Load Screen is displayed.

Figure 96. Typical Load Screen



### Loading a file

1. Find the file you want to load using the filter if necessary (see [Filtering on page 122](#)) and highlight it.
2. Click the **Load** button.

### Exiting the Filer-Fax

You may exit the Filer-Fax at any time by clicking the Eject icon in the top right corner of the screen.

## Filer-Fax Memory

If you exit the Filer-Fax or switch to another application, some details are remembered by the Filer-Fax (unless the OUI workstation is switched off):

1. If the List of Categories or the File Maintenance List is displayed, and the items in the list.
2. If the **ALPHA** indicator button is selected and an **Alpha-Selection** button.
3. Whether the **FILTER** or **TAG CATS** button is selected.
4. The categories displayed in the filter.

# Index

## A

- Acorn workstation 105
- active application 95
- adding Encore users 18
- address (IP)
  - changing for serial engine 67
  - changing in Encore 23
  - for Profile 31
  - specifying in Profile device definition 43
- Ancillary Area 119
- API
  - setting in Encore 54
- application
  - adding to Encore for VTR control 82
  - adding to engine 85
  - defining which it will use 84
  - launching in Encore 19
- application share 103
- arrow keys 97
- assigning
  - Profile device to Kalypso source 45
  - VTR device to Kalypso source 74
- automatic control 114
- aving a file 128

## B

- backup
  - configurations 25
  - procedures 25
- batch file
  - editing for fibre channel or PLS 200 39
- Black Burst
  - required for VTR interface 63
- black level 116
- brightness 116
- button
  - mapping to Profile source 48
  - mapping to VTR source 77

## C

- Cat 5 Ethernet cable
  - required for VTR interface 63
- CD-ROM drive
  - installing software without 38
- changing IP addresses in Encore 23
- channel configuration confirmation 57
- channel number and ID
  - setting and enabling in Encore 54
- chroma phase 116
- chrominance 116
- chrominance signal 116
- clip
  - duration 112
  - loading 112
  - modifying 113
  - playing/recording 114
- Clip Pad copy/retrieve 98
- configurations
  - backing up 25
  - confirming device channel 57
  - overview of VTR interface procedures 65
  - restoring 26
  - saving Encore 55
  - saving in Encore for VTR 90
  - testing Encore and Kalypso 57
- configuring
  - Encore for VTR 78
  - Encore software 49
  - Profile interface 30
  - serial engine for VTR interface 66
- connections
  - input 40
  - serial engine to network 68
  - video output 40
- creating
  - Profile device definition 41
  - VTR device definition 70
- Cue Service menu 53
- cueing 118

## D

- database for Encore 11
- defining engine for application use 84
- definition
  - creating for VTR device 70
- device
  - channel configuration confirmation 57
  - matching VTR name 71
  - name matching 42
  - naming in Encore 54
  - setting type in Encore 54
- device definition
  - creating for Profile 41
  - creating for VTR 70
- documentation online 4
- Drop Application button 104
- dustbin 127

## E

- editing batch file for fibre channel or PLS 200 39
- enabling channel no. and ID in Encore 54
- Encore
  - adding users 18
  - changing IP addresses 23
  - configuring 49
  - identifying VTR 88
  - installation procedure 12
  - launching applications 19
  - logging on 49, 79
  - naming Profile devices 54
  - OUI required for machine control 11
  - OUI required for VTR interface 63
  - Port Mapper required for machine control 11
  - saving VTR configuration 90
  - selecting Profile port 54
  - setting and enabling channel no. and ID 54
  - setting device types 54
  - setting Profile API 54
  - Sharer required for machine control 11
  - System Manager software required for machine control 11
  - testing configuration 57
  - testing playback 59
  - testing VTR control 91
  - VTR interface components 63
- Encore applications

- dropping 104
- list 101
- logoff 109
- machine control 110
- remote 103
- requesting 103
- Encore configuration
  - saving 25
- Encore desktop 94
- Encore machine control
  - saving configuration 25
- engine
  - adding application to 85
  - defining for application use 84
- Ethernet cable (Cat 5)
  - required for VTR interface 63
- exit applications 109

## F

- FAQ database 4
- fibre channel
  - editing batch file for 39
- Filer-Fax 112, 121
- filtering 122
- frequently asked questions 4
- function key 107

## G

- Grass Valley web site 4

## H

- Help Bar display 94

## I

- icon 96
- ID detector 100
- indicator button 96
- input connections 40
- installing
  - machine control software (Encore) 12
  - older machine control software 27
  - VDRCS over network 38

- without CD-ROM drive 38
- interface
  - components for VTR 63
  - configuration procedure for VTR 65
  - software for Profile 29
  - testing Profile operation 61
  - testing VTR operation 92
- IP address 105
  - changing for serial engine 67
  - changing in Encore 23
  - for Profile 31
  - specifying in Profile device definition 43

## K

- keystroke shortcut 107

## L

- launching
  - applications in Encore 19
- LMCP
  - exiting 120
- LMCP application 119
- load a file 129
- loading a clip 112
- log files
  - size 25
- logging onto Encore as Sys(tem Admin) 18
- logoff 109
- logon 94
- luminance/chrominance 116

## M

- machine control 110
- machine control software
  - installing older version 27
  - installing without CD-ROM drive 38
  - reinstalling software 26
  - requirements 11
  - restoring configurations 26
  - reverting to earlier version 27
- macros 107
- mapping
  - Profile to panel button 48
  - VTR to panel button 77

- message window options 99
- modifying a clip 113

## N

- name matching VTR device 71
- naming Profile devices in Encore 54
- network
  - connecting serial engine 68
- numeric keypad 98

## O

- OmniBus
  - Profile interface software 29
  - uninstalling 27
- online documentation 4
- OUI
  - required for machine control 11
  - required for VTR interface 63
  - testing VTR operation 91
- OUI options 106
- OUI version 105
- output (video) connections 40

## P

- panel button
  - mapping to Profile source 48
  - mapping to VTR source 77
- password entry 100
- playback
  - testing from Encore 59
- playing/recording 114
- PLS 200
  - editing batch file for 39
- port
  - selecting in Encore 54
- Port Mapper
  - required for machine control 11
  - required for VTR interface 63
- Profile
  - assigning device to Kalypso source 45
  - configuration procedure 30
  - device definition creation 41
  - device name matching requirements 42

- interface operation test 61
- interface software 29
- IP address 31
- naming device in Encore 54
- selecting port in Encore 54
- setting API in Encore 54
- setting channel no. and ID in Encore 54
- specifying IP address 43
- VDRCS application 29

## R

- record live feed 114
- recording mode selection 117
- reinstalling machine control software 26
- remote application logoff 109
- removing VDRCS 31
- requesting an application 103
- requirements
  - software for machine control 11
- restoring
  - configurations 26
- reverting to earlier machine control software 27
- RS-422 Serial cable
  - required for VTR interface 63

## S

- saving
  - Encore configuration 55
  - Encore machine control configurations 25
  - VTR configuration in Encore 90
- scroll arrow 97
- selecting port in Encore 54
- serial cable (RS-422)
  - required for VTR interface 63
- Serial Control Engine (OmniBus)
  - required for VTR interface 63
- serial engine
  - changing IP address 67
  - changing name 67
  - configuration 66
  - connecting to network 68
  - hardware installation 66
  - installation for VTR interface 66
- setting
  - API in Encore 54

- channel no. and ID in Encore 54
- device types in Encore 54
- setting time base correction 115
- Sharer
  - filer-fax 122
  - required for machine control 11
  - required for VTR interface 63
- Sharer confirmation 105
- shortcut 107
- show/hide display 95
- software
  - installing for machine control 12
  - installing older version 27
  - Profile interface from OmniBus 29
  - requirements for machine control 11
  - reverting to earlier version 27
  - updating for machine control 13
  - VDRCS application for Profile 29
- software download from web 4
- source
  - mapping Profile to panel button 48
  - mapping VTR to panel button 77
  - Profile device assignment 45
  - VTR device assignment 74
- Start button 100
- store information 98
- synchronization 116
- Sys(tem Admin)
  - logging on as 18
- System Manager software
  - adding Encore users 18
  - required for machine control 11
  - required for VTR interface 63
- system-configuration problem 102

## T

- testing
  - Encore and Kalypso configuration 57
  - Encore VTR control 91
  - playback from Encore 59
  - Profile interface operation 61
  - VTR interface operation 92
- time base corrector 115
- time code
  - entry 98
- Title Box display 95

touch screen settings 105  
 transport control button 117

## U

uninstalling  
   OmniBus 27  
   software to revert to earlier version 27  
   VDRCS 31  
 updating machine control software 13  
 user identity 100  
 users  
   adding to Encore system 18  
 using message windows 99

## V

VDR Cue Service menu 53  
 VDRCS  
   installing over network 38  
   required for interface 29  
   uninstalling 31  
 video output connections 40  
 video output level 116  
 VITC (house)  
   required for VTR interface 63  
 VSVC 63  
 VTR  
   adding application to Encore for control 82  
   assigning device to Kalypso source 74  
   creating device definition 70  
   device name matching 71  
   Encore interface components 63  
   identifying in Encore 88  
   interface operation test 92  
   mapping source to panel button 77  
   overview of config procedure 65  
   saving configuration in Encore 90  
   testing control from OUI 91  
 VTR control 110  
 VTR device 112

## W

web site documentation 4  
 web site FAQ database 4  
 web site Grass Valley 4

web site software download 4  
 window icon 96  
 workstation  
   keyboard 97  
   Status Window 105

## Y

Y/C synchronization 116

