



# Kayak HD

DIGITAL PRODUCTION SWITCHER

Release Notes  
Software Version 7.0.3



Affiliate with the N.V. KEMA in The Netherlands



# CERTIFICATE

Certificate Number: 510040.001

The Quality System of:

**Thomson Inc, and it's worldwide Grass Valley division affiliates DBA GRASS VALLEY**

**Headquarters**  
400 Providence Mine Rd  
Nevada City, CA 95959  
United States

15655 SW Greystone Ct.  
Beaverton, OR 97006  
United States

10 Presidential Way  
Suite 300  
Woburn, MA 01801  
United States

Kapittelweg 10  
4827 HG Breda  
The Netherlands

7140 Baymeadows Way  
Ste 101  
Jacksonville, FL 32256  
United States

2300 So. Decker Lake Blvd.  
Salt Lake City, UT 84119  
United States

Rue du Clos Courtel  
CS 31719  
35517 Cesson-Sevigné Cedex  
France

1 rue de l'Hautil  
Z.I. des Boutries BP 150  
78702 Conflans-Sainte  
Honorine Cedex  
France

Technopole Brest-Iroise  
Site de la Pointe du Diable  
CS 73808  
29238 Brest Cedex 3  
France

40 Rue de Bray  
2 Rue des Landelles  
35510 Cesson Sevigné  
France

Spinnereistrasse 5  
CH-5300 Turgi  
Switzerland

Brunnenweg 9  
D-64331 Weiterstadt  
Germany

Carl-Benz-Strasse 6-8  
67105 Schifferstadt  
Germany

Including its implementation, meets the requirements of the standard:

## ISO 9001:2008

Scope:

The design, manufacture and support of video and audio hardware and software products and related systems.

This Certificate is valid until: June 14, 2012  
This Certificate is valid as of: June 14, 2009  
Certified for the first time: June 14, 2000

H. Pierre Sallé  
President  
KEMA-Registered Quality

The method of operation for quality certification is defined in the KEMA General Terms And Conditions For Quality And Environmental Management Systems Certifications. Integral publication of this certificate is allowed.

**KEMA-Registered Quality, Inc.**  
4377 County Line Road  
Chalfont, PA 18914  
Ph: (215)997-4519  
Fax: (215)997-3809

**Accredited By:**  
ANAB

Experience you can trust.



# Kayak HD

DIGITAL PRODUCTION SWITCHER

Release Notes  
Software Version 7.0.3

# Contacting Grass Valley

<b>International Support Centers</b>	<b>France 24 x 7</b>	+800 8080 2020 or +33 1 48 25 20 20	<b>United States/Canada 24 x 7</b>	+1 800 547 8949 or +1 530 478 4148
<b>Local Support Centers (available during normal business hours)</b>	<b>Asia</b>	<b>Hong Kong, Taiwan, Korea, Macau:</b> +852 2531 3058 <b>Indian Subcontinent:</b> +91 22 24933476 <b>Southeast Asia/Malaysia:</b> +603 7805 3884 <b>Southeast Asia/Singapore:</b> +65 6379 1313 <b>China:</b> +861 0660 159 450 <b>Japan:</b> +81 3 5484 6868		
		<b>Australia and New Zealand:</b> +61 1300 721 495	<b>Central/South America:</b> +55 11 5509 3443	
		<b>Middle East:</b> +971 4 299 64 40 <b>Near East and Africa:</b> +800 8080 2020 or +33 1 48 25 20 20		
	<b>Europe</b>	<b>Belarus, Russia, Tadzikistan, Ukraine, Uzbekistan:</b> +7 095 2580924 225 <b>Switzerland:</b> +41 1 487 80 02 <b>S. Europe/Italy-Roma:</b> +39 06 87 20 35 28 <b>-Milan:</b> +39 02 48 41 46 58 <b>S. Europe/Spain:</b> +34 91 512 03 50 <b>Benelux/Belgium:</b> +32 (0) 2 334 90 30 <b>Benelux/Netherlands:</b> +31 (0) 35 62 38 42 1 <b>N. Europe:</b> +45 45 96 88 70 <b>Germany, Austria, Eastern Europe:</b> +49 6150 104 444 <b>UK, Ireland, Israel:</b> +44 118 923 0499		

Copyright © Thomson, Inc. All rights reserved.  
This product may be covered by one or more U.S. and foreign patents.

## Grass Valley Web Site

The [www.grassvalley.com](http://www.grassvalley.com) web site offers the following:

**Online User Documentation** — Current versions of product catalogs, brochures, data sheets, ordering guides, planning guides, manuals, and release notes in .pdf format can be downloaded.

**FAQ Database** — Solutions to problems and troubleshooting efforts can be found by searching our Frequently Asked Questions (FAQ) database.

**Software Downloads** — Download software updates, drivers, and patches.



## END-OF-LIFE PRODUCT RECYCLING NOTICE

Grass Valley's innovation and excellence in product design also extends to the programs we've established to manage the recycling of our products. Grass Valley has developed a comprehensive end-of-life product take back program for recycle or disposal of end-of-life products. Our program meets the requirements of the European Union's WEEE Directive, the United States Environmental Protection Agency, and U.S. state and local agencies.

Grass Valley's end-of-life product take back program assures proper disposal by use of Best Available Technology. This program accepts any Grass Valley branded equipment. Upon request, a Certificate of Recycling or a Certificate of Destruction, depending on the ultimate disposition of the product, can be sent to the requester.

Grass Valley will be responsible for all costs associated with recycling and disposal, including freight. However, you are responsible for the removal of the equipment from your facility and packing the equipment to make it ready for pickup.



For further information on the Grass Valley product take back system please contact Grass Valley at + 800 80 80 20 20 or +33 1 48 25 20 20 from most other countries. In the U.S. and Canada please call 800-547-8949 or 530-478-4148, and ask to be connected to the EH&S Department. Additional information concerning the program can be found at: [www.thomsongrassvalley.com/environment](http://www.thomsongrassvalley.com/environment)



# Contents

- Section 1 — Kayak HD Release Notes** ..... 1
  - Introduction ..... 1
  - New Features ..... 1
  - Compatibility ..... 2
    - New Probel Router Driver ..... 2
    - New Menu Panel Touch Screen Driver ..... 2
    - Input Timing ..... 2
  - Available Documentation on V7.0.3 Release CD ..... 3
  - New Features Using Kayak Control Panels ..... 4
    - Aux Bus Transitions ..... 4
    - ..... 5
  - Software Installation ..... 6
    - Installing the Sidepanel Software ..... 6
    - Installing Panel and Mainframe Software ..... 11



# *Kayak HD Release Notes*

## **Introduction**

This document includes notes for software installation, licenses, new features changes and enhancements, and other information specific to the release of Kayenne XL control panel, Kayenne XL menu panel and the Kayak HD video frame that have changed since Kayak/Kayenne XL software release V702.

## **New Features**

- Aux Transition for Kayenne XL Control Panel
- Aux Transition for Kayak Control Panels
- Single button and Module disabling for Kayenne XL Control Panels
- New enhanced Macro Editor for Kayenne XL control panels
- Stand alone Kayenn XL Macro Editor for external PC
- Enhancement up to 32 external router outputs.  
Possibility to enter Router Output Names (only Kayenne XL)
- Bugfix: New Probel driver. Refer section [Compatibility on page 2](#)
- User Manual and Online Help updates and enhancements
- Installation Manual updates, e.g. Satellite Panel

## Compatibility

The Software is compatible for connected device types

- Kayenne XL control panel
- Kayenne XL menu panel
- Kayak control panel
- Kayak HD mainframes

if the software has been installed from the same Release CD.

To run the Kayenne XL control panel on a Kayak HD mainframe, the Software License '**Kayenne XL Frame**' must be installed at the Kayak HD mainframe.

With V700 the Kayenne XL menu panel DS1220.xxx (1280x768Pix) replaces the former KayakHD Sidepanel version DS0203.xxx (640X480 Pix).

The software version 7.0.3 does not support the following hardware

- Kayak DD-1 and Kayak DD-2 Production Switcher
- Kayak HDX Control Panels (former DD35/XtenDD Control Panels)

## New Probel Router Driver

Because of a new Probel driver in V703 it is recommended to select the new drivers (**probel\_ctrl\_v703** respectively **probel\_syst\_v703**) after software installation in order to establish the connection to the router properly.

## New Menu Panel Touch Screen Driver

With software release V703 the Sidepanel Menu Navigation Panel and - Operation Panel run in a common window. Due to this change, the menu panel can also run with the new version of touch screen driver **UniWinDriver V6.34**.

Earlier software releases however still need the **UniWinDriver V6.20**. An update from V6.20 to V6.34 is not necessary.

Both versions are available on the software installation CD.

## Input Timing

With introduction of AUX Transitions in software release V703, the input timing range is reduced by 80 pixels. After software installation, the input source timing must be checked again.



## **Available Documentation on V7.0.3 Release CD**

The V7.0.3 Release CD contains the following documentation:

- ReleaseNote.pdf (this document)
- Release Note Addendum.pdf
- Kayenne\_XL\_ISM\_V703.pdf (Installation and Service Manual)
- Kayenne\_XL\_User\_Manual\_V703.pdf (User Manual)

V694 Documentation for Kayak HD

- Kayak\_User\_Manual\_V693.pdf (User Manual)
- KayakHDV694IPM845103.pdf, KayakHDV694ISM844806.pdf (Installation and Service Manual)

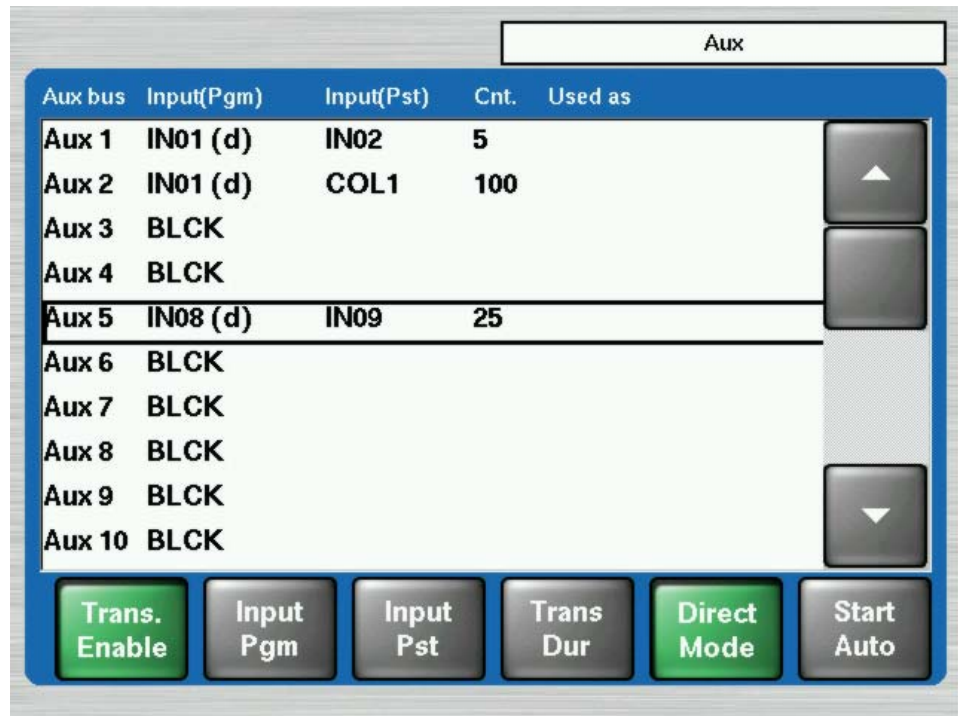
# New Features Using Kayak Control Panels

## Aux Bus Transitions

AUX Bus Transition is a new feature introduced with software version V703. It offers the possibility to execute up to two AUX-AUTO-MIX transitions simultaneously from any Kayenne XL or Kayak control panel. The AUX transition control settings **Transition Mode** and **Transition Duration** can be enabled individually per AUX Bus of the video frame and are stored with the frame's configuration settings.

Compared to the new Kayenne XL Control Panel the Kayak Control Panels do not have the **Direct Trans** and **Auto Trans** buttons. Therefore AUX Transitions can only be made when **Direct Mode** is activated in the Kayak's Aux menu. If **Auto Mode** activated, Aux Transition can only be executed using the menu buttons.

Figure 1. Kayak Aux Menu



- **Trans. Enable:**  
Toggles the AUX Transition activation for the selected Aux Bus (Aux5). If the AUX Transition is enabled you get access to the AUX transition control buttons **Input Preset**, **Trans Dur**, **Direct Mode** and **Start Auto**.
- **Input (Pgm)**  
Switch the AUX source immediately to a new input source.
- **Input (Pst)**  
Set the new preset source for the next AUX Transition execution.
- **Trans Dur**  
Set the transition duration for subsequent AUX Transition executions (in frames). While the AUX Transition is running, the **Cnt.** column shows the transition count down value.
- **Direct Mode**  
If **Direct Mode** is enabled, selecting a new AUX source on the Kayak Control Panel starts an AUX transition. If **Direct Mode** is disabled the Control Panels AUX source selection cuts to the new source.
- **Start Auto**  
Starts the AUX Transition to the Input (Pst) source. At the end of an AUX Transition, the AUX Pgm and AUX Pst inputs swap. During the transition the source button lamp flashes to indicate the transition

**Note** The running transition can be finished by pressing the **Start Auto** button again. A pause of the running transition is not possible.

**Note** During transition it is possible to change the source (Pst) by simple pressing another source button. The transition will be completed in the remaining time.

# Software Installation

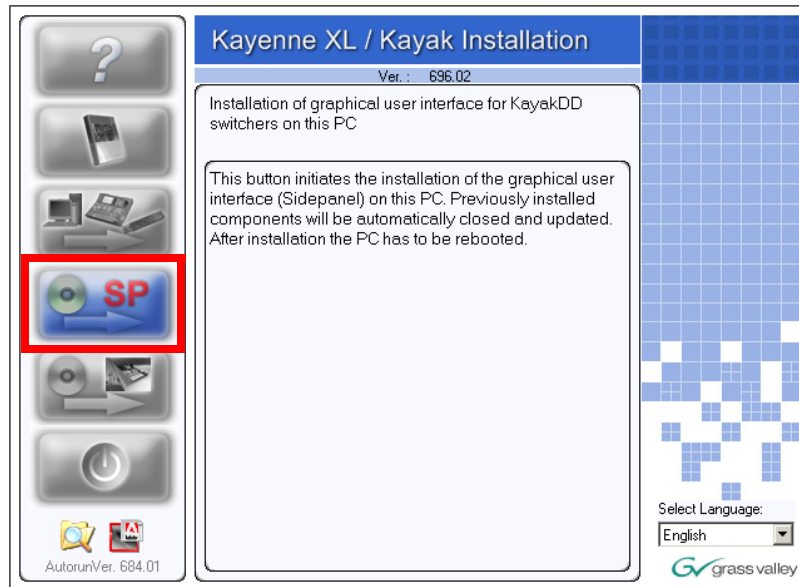
## Installing the Sidepanel Software

- Insert the Kayak HD Software CD into your computer's CD-ROM drive. Or download the software from [www.thomsongrassvalley.com](http://www.thomsongrassvalley.com). Copy the software to a USB device (flash memory or hard disk).
- Connect the USB device at the right side of the Menu Panel.
- Kayak HD Software uses an autorun application to help installing the software. Navigate to the following directory:

\ds0206\Autorun\Autorun.exe

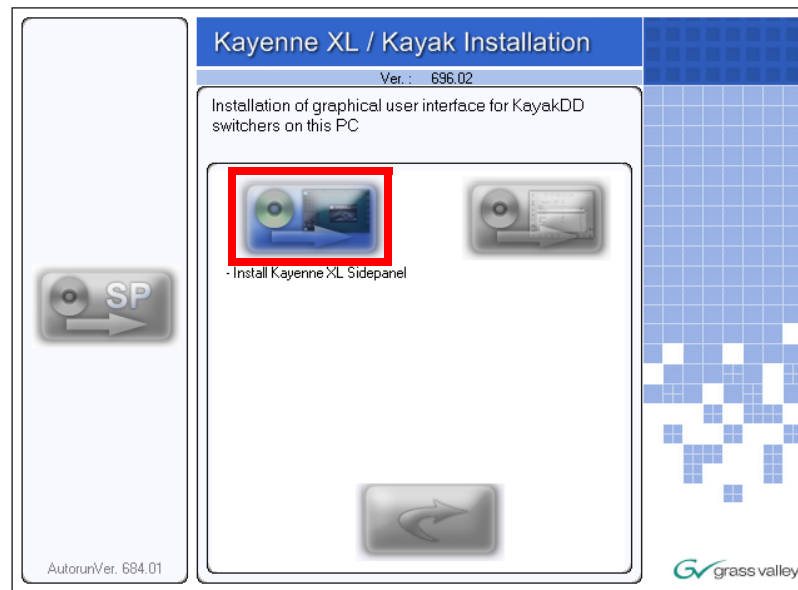
- Select '**Installation of graphical user interface**' at the Kayak HD / Kayak Installation wizard:

Figure 2. Side Panel Installation (Example)



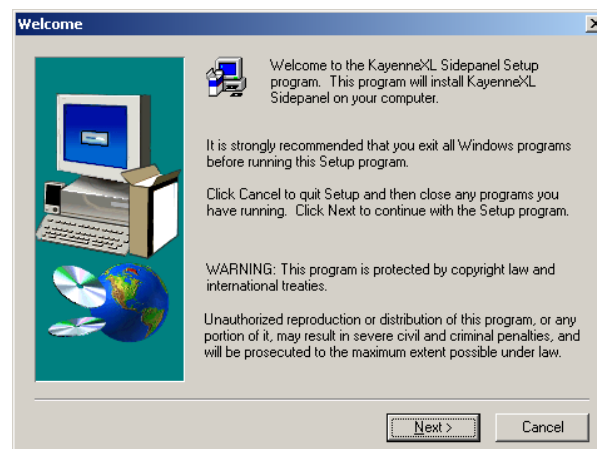
- Click on **Install Kayenne XL Sidepanel** to launch the installation.

Figure 3. Kayenne Side Panel Installation



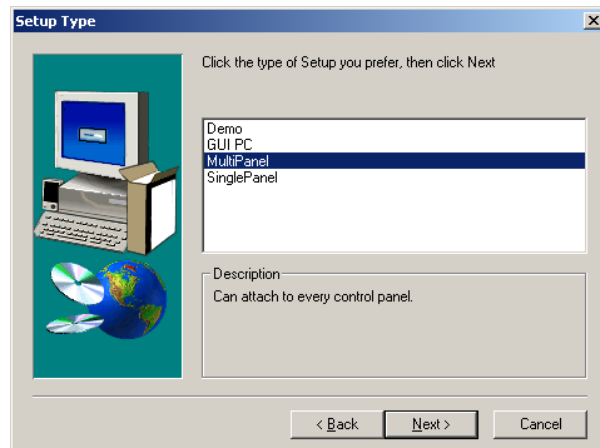
- The Sidepanel Software Installation Welcome screen displays. Click **Next**.

Figure 4. Confirm



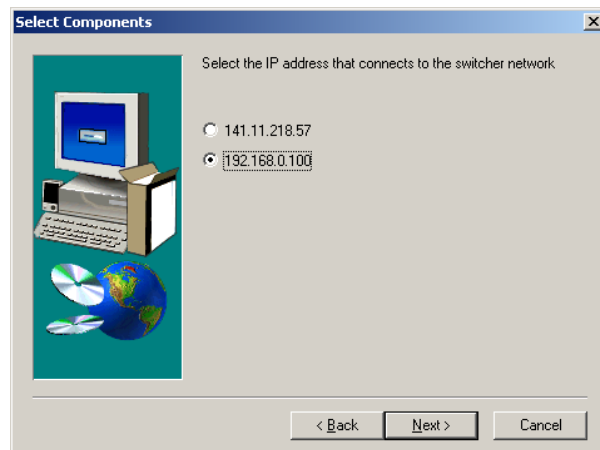
- Choose the type of installation you wish to perform:
  - **Demo:** Demo version, no connection to a panel or a frame.
  - **GUI PC:** Connection only to a frame, not to a panel.
  - **MultiPanel:** Connection to frame and panel.
  - **SinglePanel:** Connection to a specified panel during installation.

Figure 5. Installation type



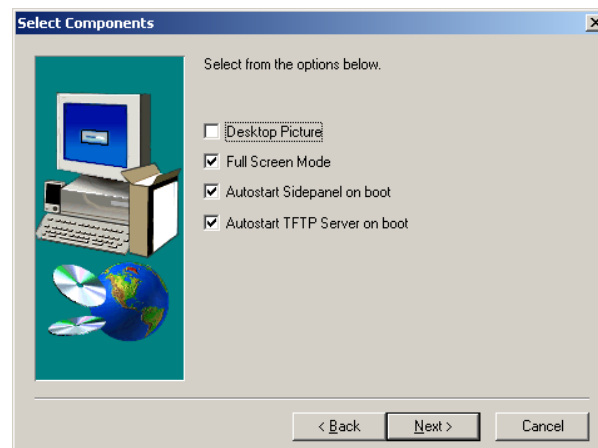
- Select the network which is used for the switcher network and click **Next:**

Figure 6. Select component



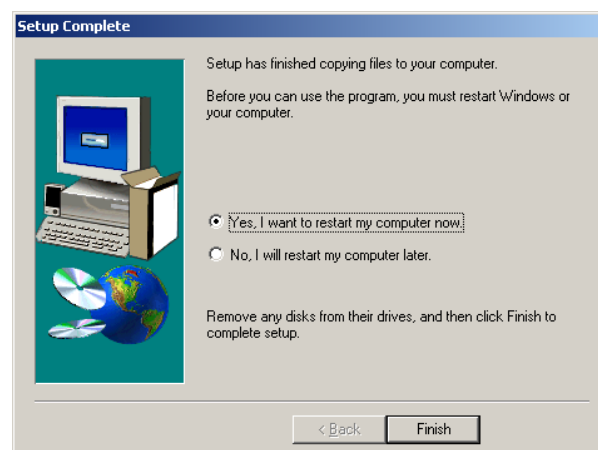
- Click to select or deselect the checkbox for **Desktop Picture, Full Screen Mode, Autostart Sidepanel on boot** and **Autostart TFTP Server on boot.**

Figure 7. Select options



- Click to select the checkbox for **Yes, I want to restart my computer now** and click **Finish**.

Figure 8. Confirm restart



To complete the computer connection to the panel and frame after the computer has rebooted.

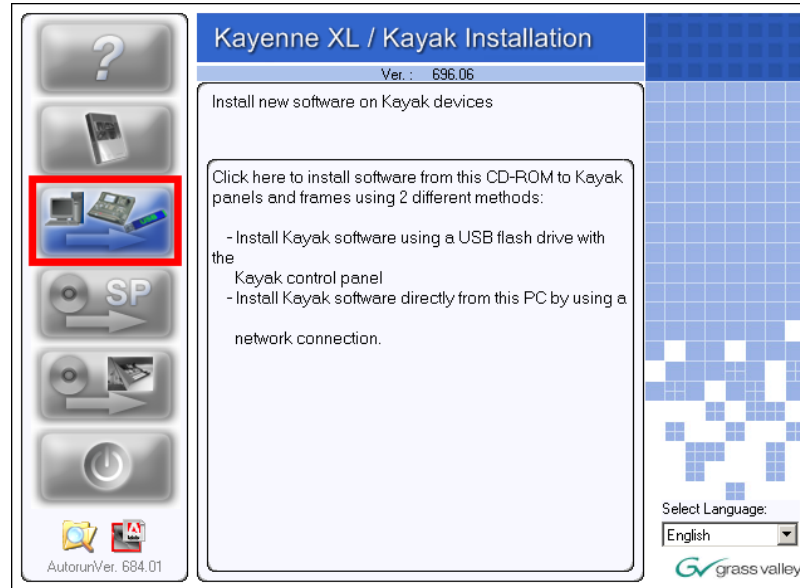
- Launch the Sidepanel software application.
- Click to select the box for **E-Box** at the top of the screen. A blue line displays in the bottom of the box to indicate that it has been selected.
- Click to select the box for **Panel** at the top of the screen.
- Click to select the name and IP address for the frame and the panel from the scrolling list at the bottom of the screen.
- Click the **Connect** button to connect the frame to the panel and to the computer Sidepanel software for this session.
- Click **Attach** to make the connection from the frame to the panel and to the computer Sidepanel software persistent so that it will remain after the computer reboots.



## Installing Panel and Mainframe Software

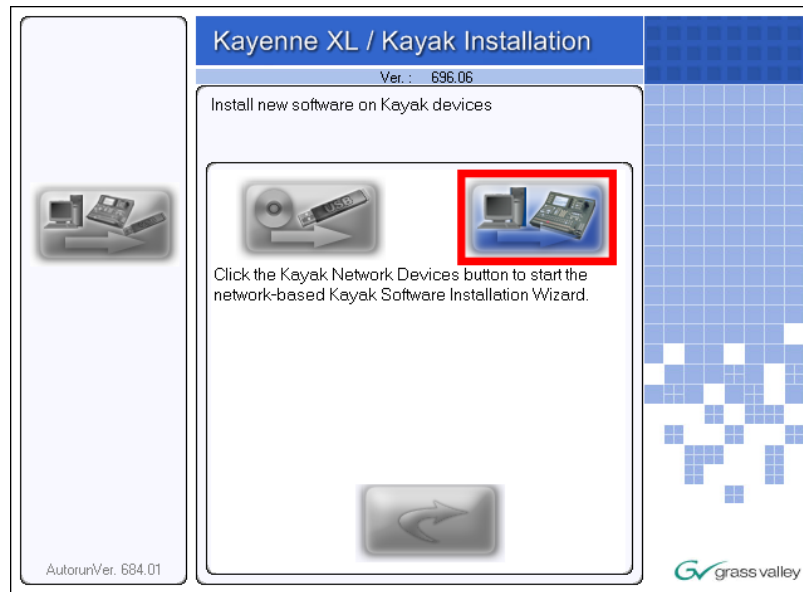
- From the **CD Installer Welcome screen** click on the **Install new software** button (third from the top on the left as shown in Figure below):

Figure 9. Software installation



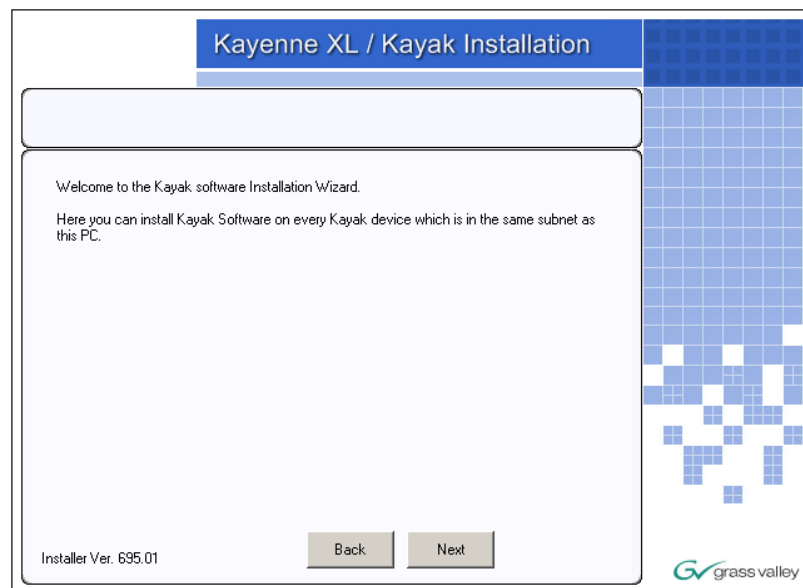
- The Install new software selection screen is displayed. Click on **Network Devices** button on the right to install software over the network.

Figure 10. Network Devices



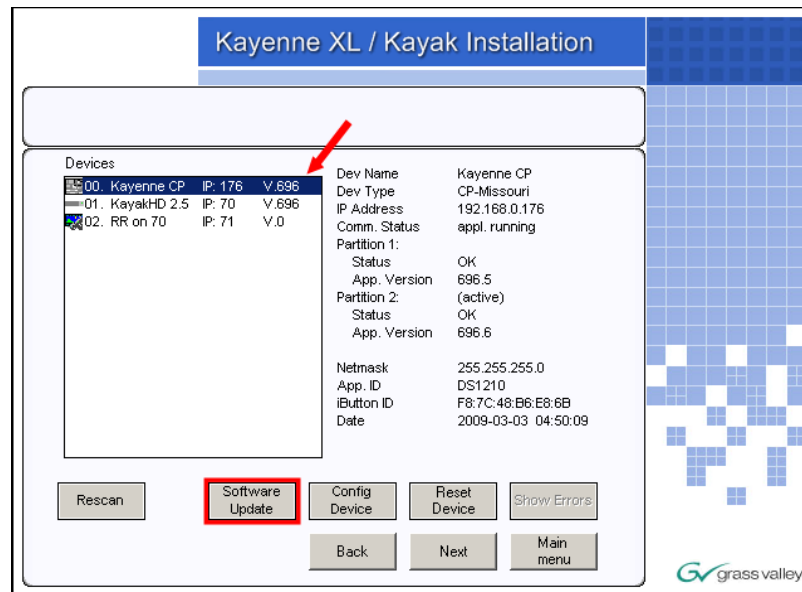
- In the **Device Selection** screen every Kayak HD and Kayak devices connected to your computer's network are displayed here in the window. Click on a name in the list to select a device for installation.
- Click on **Next**.

Figure 11. Next



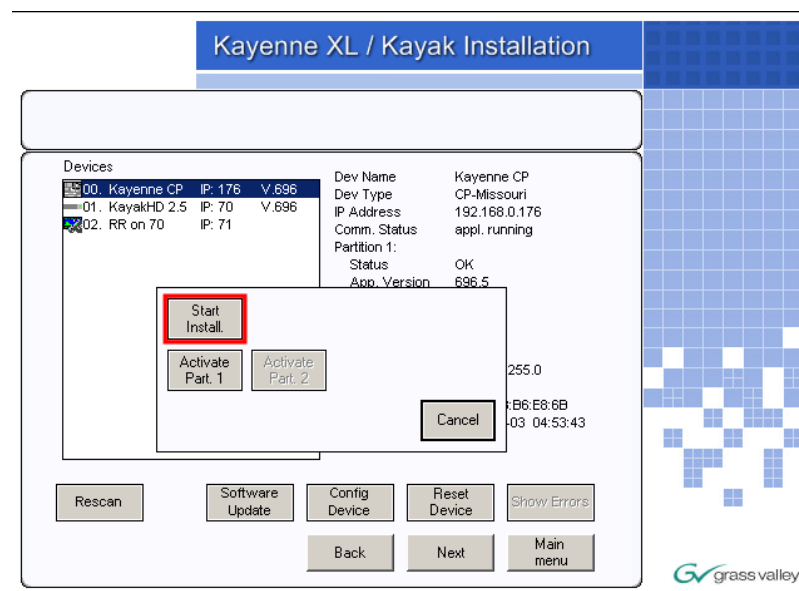
- Once you have selected the frame or the panel, click on **Software Update** below the device list to start the software installation.

Figure 12. Software Update



- Select **Start Install** to start the software installation on the selected device.

Figure 13. Start Installation



- Confirm with **Yes**. The installation progress will be shown at the top of the screen.
- Confirm the reboot with **Yes** to complete the software installation.

Figure 14. Confirm

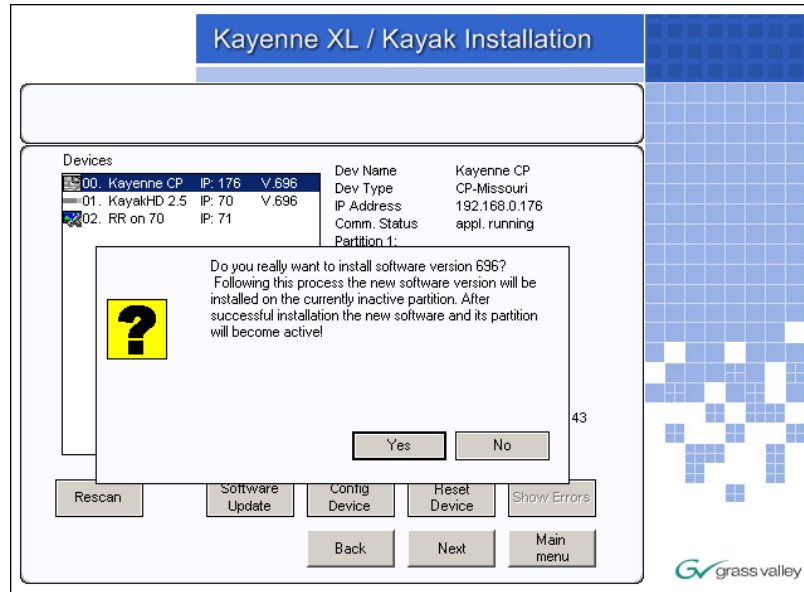


Figure 15. Progress bar Software update

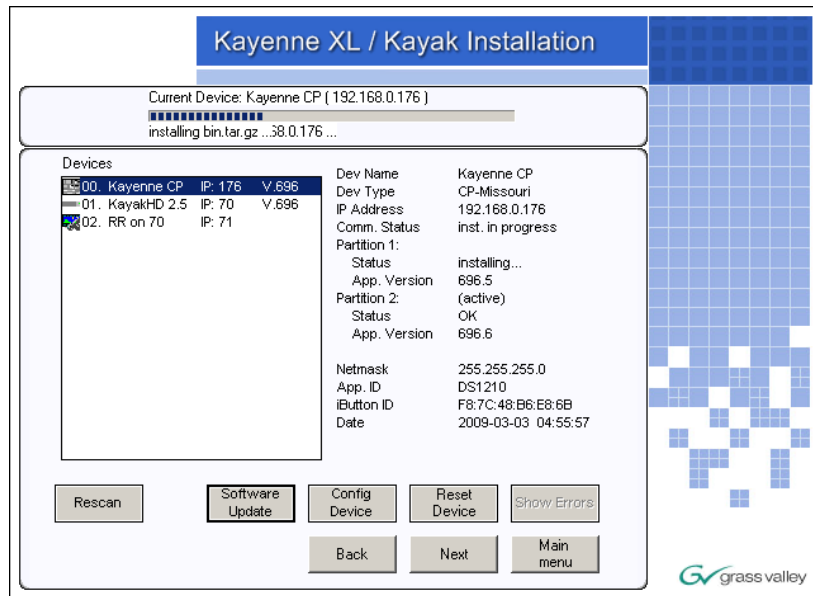


Figure 16. Reset device

