



Kayak HD

DIGITAL PRODUCTION SWITCHER

Release Notes
Software Version 7.0.4



Affiliate with the N.V. KEMA in The Netherlands



CERTIFICATE

Certificate Number: 510040.001

The Quality System of:

Thomson Inc, and it's worldwide Grass Valley division affiliates DBA GRASS VALLEY

Headquarters
400 Providence Mine Rd
Nevada City, CA 95959
United States

15655 SW Greystone Ct.
Beaverton, OR 97006
United States

10 Presidential Way
Suite 300
Woburn, MA 01801
United States

Kapittelweg 10
4827 HG Breda
The Netherlands

7140 Baymeadows Way
Ste 101
Jacksonville, FL 32256
United States

2300 So. Decker Lake Blvd.
Salt Lake City, UT 84119
United States

Rue du Clos Courtel
CS 31719
35517 Cesson-Sevigné Cedex
France

1 rue de l'Hautil
Z.I. des Boutries BP 150
78702 Conflans-Sainte
Honorine Cedex
France

Technopole Brest-Iroise
Site de la Pointe du Diable
CS 73808
29238 Brest Cedex 3
France

40 Rue de Bray
2 Rue des Landelles
35510 Cesson Sevigné
France

Spinnereistrasse 5
CH-5300 Turgi
Switzerland

Brunnenweg 9
D-64331 Weiterstadt
Germany

Carl-Benz-Strasse 6-8
67105 Schifferstadt
Germany

Including its implementation, meets the requirements of the standard:

ISO 9001:2008

Scope:

The design, manufacture and support of video and audio hardware and software products and related systems.

This Certificate is valid until: June 14, 2012
This Certificate is valid as of: June 14, 2009
Certified for the first time: June 14, 2000

H. Pierre Sallé
President
KEMA-Registered Quality

The method of operation for quality certification is defined in the KEMA General Terms And Conditions For Quality And Environmental Management Systems Certifications. Integral publication of this certificate is allowed.

KEMA-Registered Quality, Inc.
4377 County Line Road
Chalfont, PA 18914
Ph: (215)997-4519
Fax: (215)997-3809

Accredited By:
ANAB

Experience you can trust.



Kayak HD

DIGITAL PRODUCTION SWITCHER

Release Notes
Software Version 7.0.4

Contacting Grass Valley

International Support Centers	France 24 x 7	+800 8080 2020 or +33 1 48 25 20 20	United States/Canada 24 x 7	+1 800 547 8949 or +1 530 478 4148
Local Support Centers (available during normal business hours)	Asia	Hong Kong, Taiwan, Korea, Macau: +852 2531 3058 Indian Subcontinent: +91 22 24933476 Southeast Asia/Malaysia: +603 7805 3884 Southeast Asia/Singapore: +65 6379 1313 China: +861 0660 159 450 Japan: +81 3 5484 6868		
		Australia and New Zealand: +61 1300 721 495	Central/South America: +55 11 5509 3443	
		Middle East: +971 4 299 64 40 Near East and Africa: +800 8080 2020 or +33 1 48 25 20 20		
	Europe	Belarus, Russia, Tadzikistan, Ukraine, Uzbekistan: +7 095 2580924 225 Switzerland: +41 1 487 80 02 S. Europe/Italy-Roma: +39 06 87 20 35 28 -Milan: +39 02 48 41 46 58 S. Europe/Spain: +34 91 512 03 50 Benelux/Belgium: +32 (0) 2 334 90 30 Benelux/Netherlands: +31 (0) 35 62 38 42 1 N. Europe: +45 45 96 88 70 Germany, Austria, Eastern Europe: +49 6150 104 444 UK, Ireland, Israel: +44 118 923 0499		

Copyright © Thomson, Inc. All rights reserved.
This product may be covered by one or more U.S. and foreign patents.

Grass Valley Web Site

The www.grassvalley.com web site offers the following:

Online User Documentation — Current versions of product catalogs, brochures, data sheets, ordering guides, planning guides, manuals, and release notes in .pdf format can be downloaded.

FAQ Database — Solutions to problems and troubleshooting efforts can be found by searching our Frequently Asked Questions (FAQ) database.

Software Downloads — Download software updates, drivers, and patches.



END-OF-LIFE PRODUCT RECYCLING NOTICE

Grass Valley's innovation and excellence in product design also extends to the programs we've established to manage the recycling of our products. Grass Valley has developed a comprehensive end-of-life product take back program for recycle or disposal of end-of-life products. Our program meets the requirements of the European Union's WEEE Directive, the United States Environmental Protection Agency, and U.S. state and local agencies.

Grass Valley's end-of-life product take back program assures proper disposal by use of Best Available Technology. This program accepts any Grass Valley branded equipment. Upon request, a Certificate of Recycling or a Certificate of Destruction, depending on the ultimate disposition of the product, can be sent to the requester.

Grass Valley will be responsible for all costs associated with recycling and disposal, including freight. However, you are responsible for the removal of the equipment from your facility and packing the equipment to make it ready for pickup.



For further information on the Grass Valley product take back system please contact Grass Valley at + 800 80 80 20 20 or +33 1 48 25 20 20 from most other countries. In the U.S. and Canada please call 800-547-8949 or 530-478-4148, and ask to be connected to the EH&S Department. Additional information concerning the program can be found at: www.thomsongrassvalley.com/environment



Contents

- Section 1 — Kayak HD Release Notes** 1
 - Introduction 1
 - New Features 1
 - Compatibility 2
 - New Probel Router Driver 2
 - New Menu Panel Touch Screen Driver 2
 - Input Timing 2
 - Available Documentation on V7.0.4 Release CD 3
 - Software Installation 4
 - Installing the Sidepanel Software 4
 - Installing Panel and Mainframe Software 9

Kayak HD Release Notes

Introduction

This document includes notes for software installation, licenses, new features changes and enhancements, and other information specific to the release of Kayenne XL control panel, Kayenne XL menu panel and the Kayak HD video frame that have changed since Kayak/Kayenne XL software release V703.

New Features

- DPM Corner Pinning (available with 'Kurl' license)
- DPM Channel Opacity
- Grass Valley Camera Control available from the Kayenne XL Control Panel MFM module and from Sidepanel GUI.
- Updated User Manuals for Kayak HD and Kayenne XL. The Kayenne XL User Manual is available in the context sensitive help system of the Sidepanel.
- The joystick button of the Kayenne XL's MFM module got context sensitive reset functionality.
- Support of long source names in the Kayenne XL source name displays.
- Support of up to 14 remote AUX-CPs on the Kayak HD mainframe.

Note Corner Pinning and Camera Control is available with Kayenne XL Control Panels and Sidepanel GUI only!

Compatibility

The Software is compatible for connected device types

- Kayenne XL control panel
- Kayenne XL menu panel
- Kayak control panel
- Kayak HD mainframes

if the software has been installed from the same Release CD.

To run the Kayenne XL control panel on a Kayak HD mainframe, the Software License '**Kayenne XL Frame**' must be installed at the Kayak HD mainframe.

With V700 the Kayenne XL menu panel DS1220.xxx (1280x768Pix) replaces the former KayakHD Sidepanel version DS0203.xxx (640X480 Pix).

The software version 7.0.4 does not support the following hardware

- Kayak DD-1 and Kayak DD-2 Production Switcher
- Kayak HDX Control Panels (former DD35/XtenDD Control Panels)

New Probel Router Driver

Because of a new Probel driver in V703 it is recommended to select the new drivers (**probel_ctrl_v703** repectively **probel_syst_v703**) after software installation in order to establish the connection to the router properly.

New Menu Panel Touch Screen Driver

With software release V703 the Sidepanel Menu Navigation Panel and - Operation Panel run in a common window. Due to this change, the menu panel can also run with the new version of touch screen driver **UniWinDriver V6.34**.

Earlier software releases however still need the **UniWinDriver V6.20**. An update from V6.20 to V6.34 is not necessary.

Both versions are available on the software installation CD.

Input Timing

With introduction of AUX Transitions in software release V703, the input timing range is reduced by 80 pixels. After software installation, the input source timing must be checked again.

Available Documentation on V7.0.4 Release CD

The V7.0.4 Release CD contains the following documentation:

- ReleaseNote.pdf (this document)
- Release Note Addendum.pdf
- Kayenne_XL_ISM_V704.pdf (Installation and Service Manual)
- Kayenne_XL_USR_V704.pdf (User Manual)

V704 Documentation for Kayak HD

- Kayak_HD_USR_V704.pdf (User Manual)
- KayakHDV694IPM845103.pdf, KayakHDV694ISM844806.pdf (Installation and Service Manual)

Software Installation

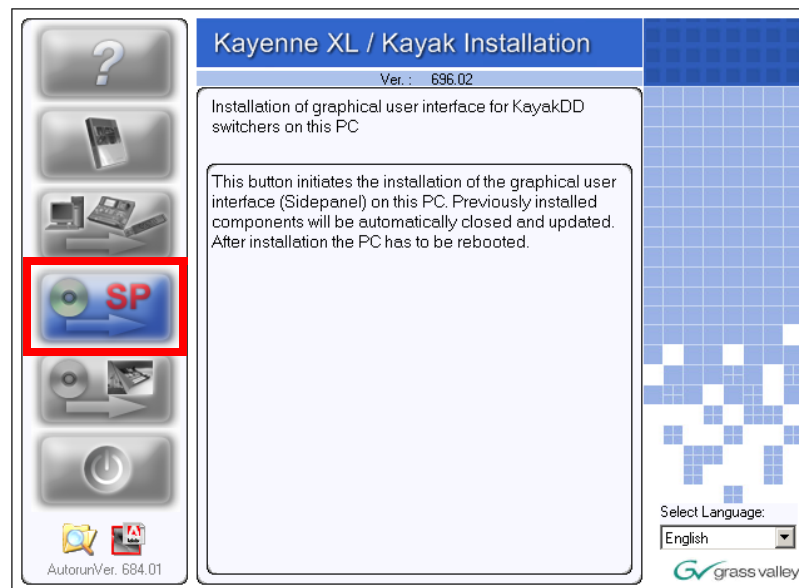
Installing the Sidepanel Software

- Insert the Kayak HD Software CD into your computer's CD-ROM drive. Or download the software from www.thomsongrassvalley.com. Copy the software to a USB device (flash memory or hard disk).
- Connect the USB device at the right side of the Menu Panel.
- Kayak HD Software uses an autorun application to help installing the software. Navigate to the following directory:

\ds0206\Autorun\Autorun.exe

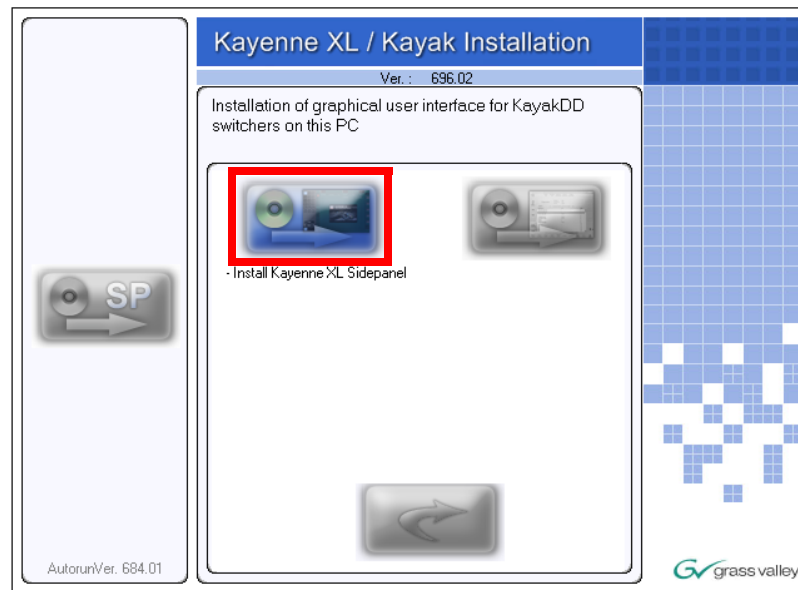
- Select '**Installation of graphical user interface**' at the Kayak HD / Kayak Installation wizard:

Figure 1. Side Panel Installation (Example)



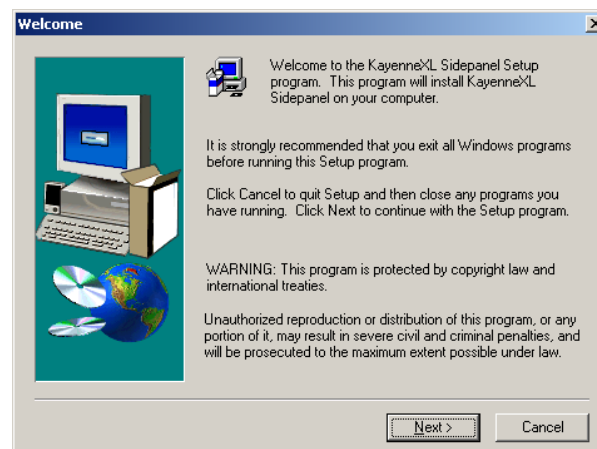
- Click on **Install Kayenne XL Sidepanel** to launch the installation.

Figure 2. Kayenne Side Panel Installation



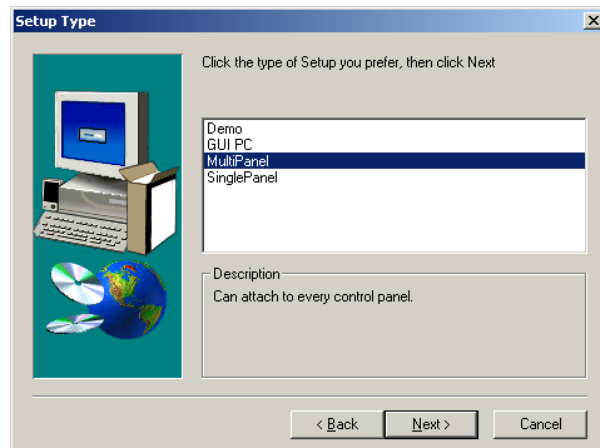
- The Sidepanel Software Installation Welcome screen displays. Click **Next**.

Figure 3. Confirm



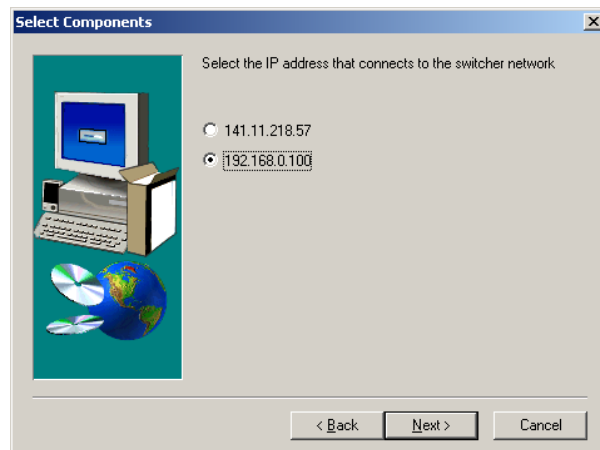
- Choose the type of installation you wish to perform:
 - **Demo:** Demo version, no connection to a panel or a frame.
 - **GUI PC:** Connection only to a frame, not to a panel.
 - **MultiPanel:** Connection to frame and panel.
 - **SinglePanel:** Connection to a specified panel during installation.

Figure 4. Installation type



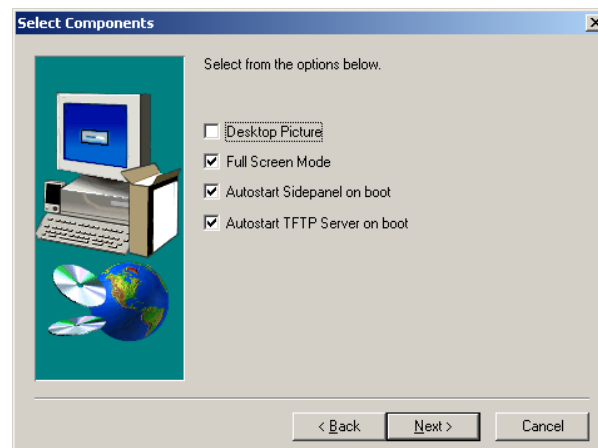
- Select the network which is used for the switcher network and click **Next:**

Figure 5. Select component



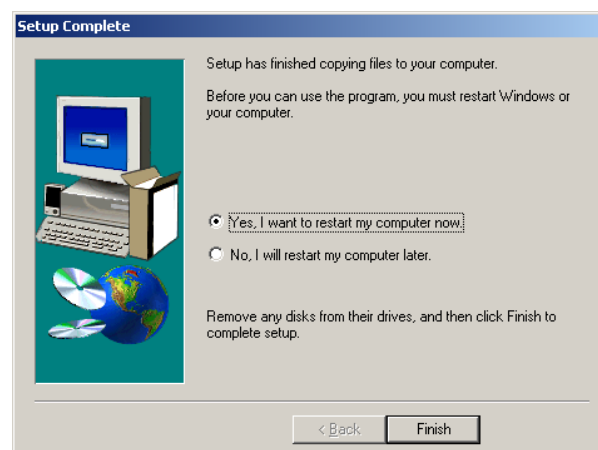
- Click to select or deselect the checkbox for **Desktop Picture, Full Screen Mode, Autostart Sidepanel on boot** and **Autostart TFTP Server on boot.**

Figure 6. Select options



- Click to select the checkbox for **Yes, I want to restart my computer now** and click **Finish**.

Figure 7. Confirm restart



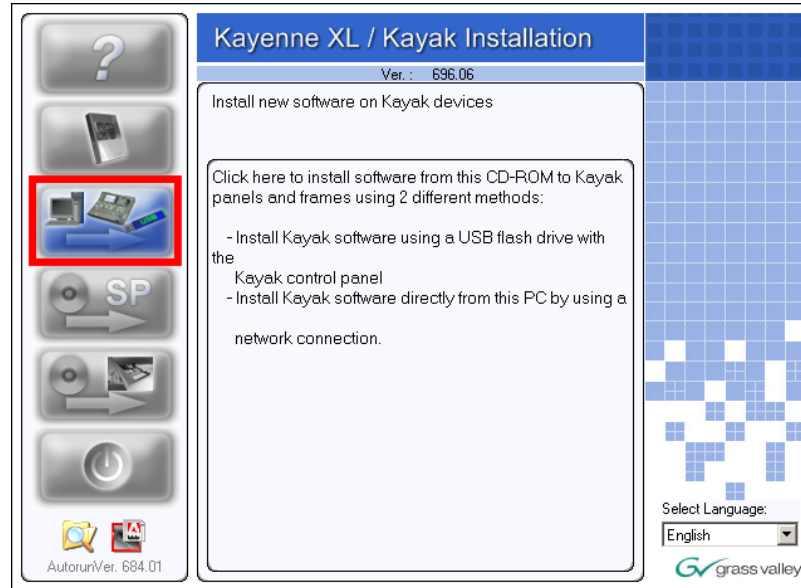
To complete the computer connection to the panel and frame after the computer has rebooted.

- Launch the Sidepanel software application.
- Click to select the box for **E-Box** at the top of the screen. A blue line displays in the bottom of the box to indicate that it has been selected.
- Click to select the box for **Panel** at the top of the screen.
- Click to select the name and IP address for the frame and the panel from the scrolling list at the bottom of the screen.
- Click the **Connect** button to connect the frame to the panel and to the computer Sidepanel software for this session.
- Click **Attach** to make the connection from the frame to the panel and to the computer Sidepanel software persistent so that it will remain after the computer reboots.

Installing Panel and Mainframe Software

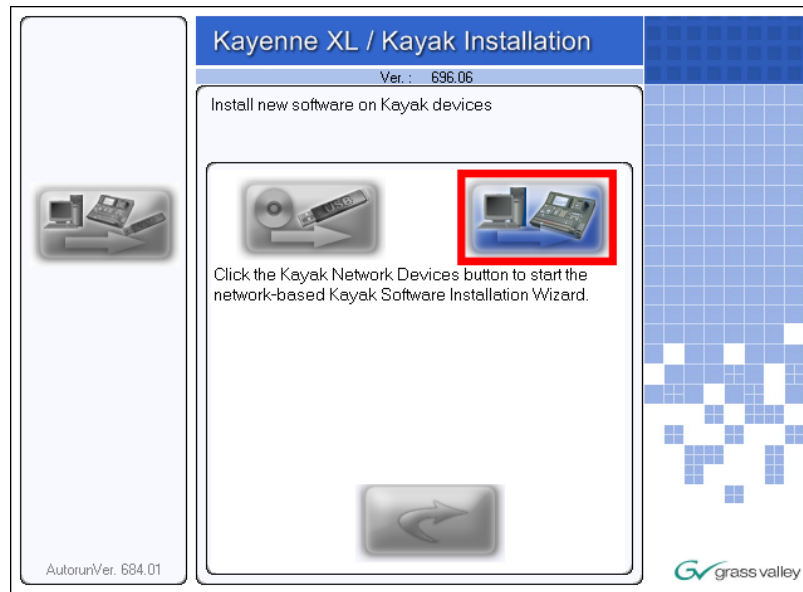
- From the **CD Installer Welcome screen** click on the **Install new software** button (third from the top on the left as shown in Figure below):

Figure 8. Software installation



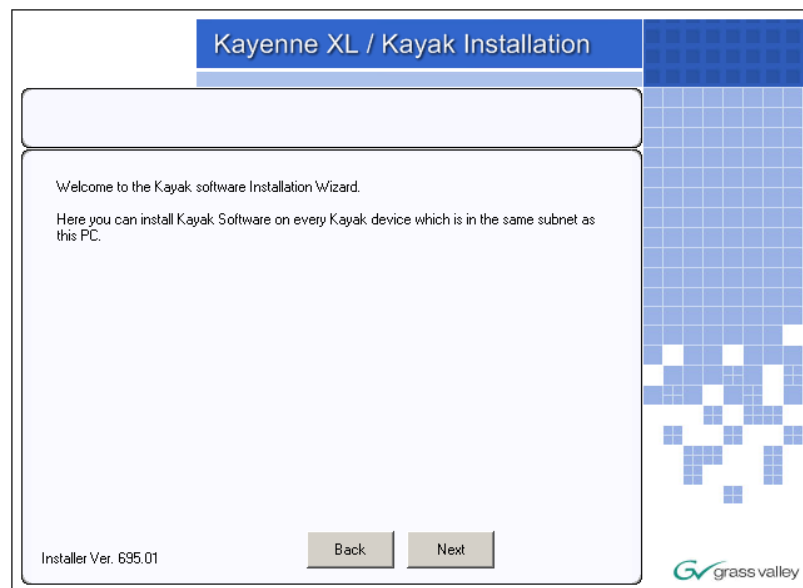
- The Install new software selection screen is displayed. Click on **Network Devices** button on the right to install software over the network.

Figure 9. Network Devices



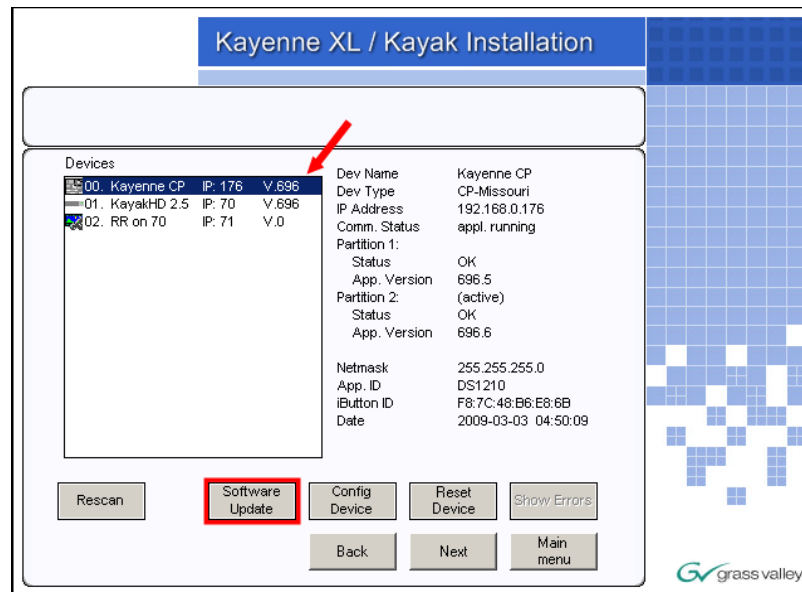
- In the **Device Selection** screen every Kayak HD and Kayak devices connected to your computer's network are displayed here in the window. Click on a name in the list to select a device for installation.
- Click on **Next**.

Figure 10. Next



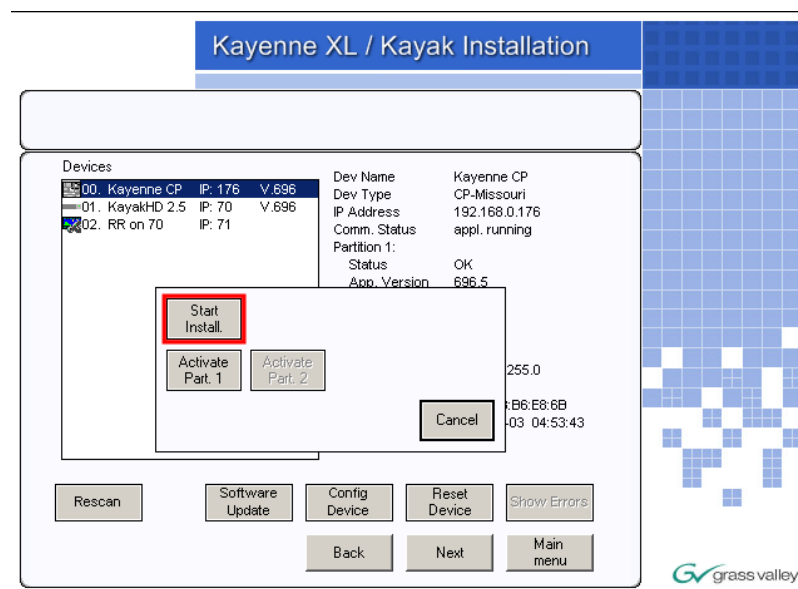
- Once you have selected the frame or the panel, click on **Software Update** below the device list to start the software installation.

Figure 11. Software Update



- Select **Start Install** to start the software installation on the selected device.

Figure 12. Start Installation



- Confirm with **Yes**. The installation progress will be shown at the top of the screen.
- Confirm the reboot with **Yes** to complete the software installation.

Figure 13. Confirm

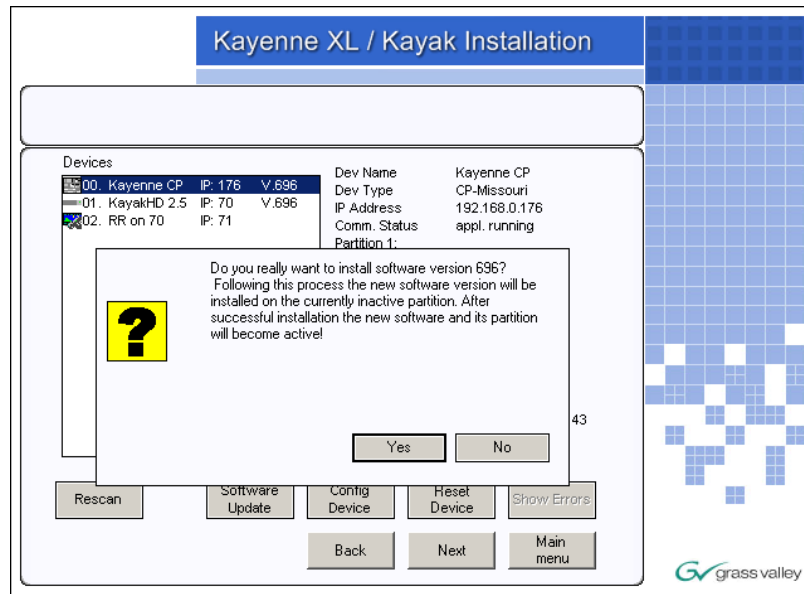


Figure 14. Progress bar Software update

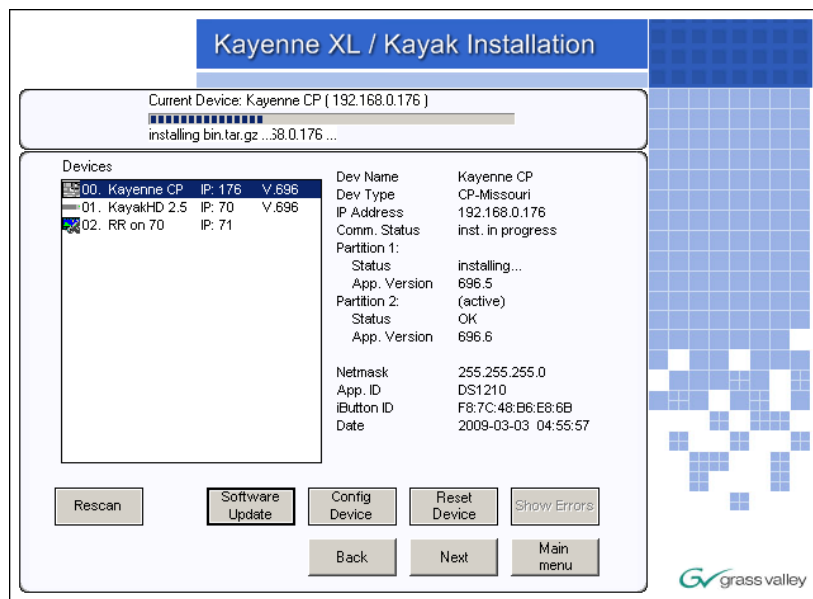


Figure 15. Reset device

