

# KayakDD

DIGITAL PRODUCTION SWITCHER

## Release Notes



SOFTWARE VERSION 6.6.8

071831409  
JANUARY 2005

*the most watched worldwide*

## Contacting Grass Valley

Region	Voice	Fax	Address	Web Site
North America	(800) 547-8949 Support: 530-478-4148	Sales: (530) 478-3347 Support: (530) 478-3181	Grass Valley P.O. Box 599000 Nevada City, CA 95959- 7900 USA	www.thomsongrassvalley.com
Pacific Operations	+852-2585-6688 Support: 852-2585-6579	+852-2802-2996		
U.K., Asia, Middle East	+44 1753 218 777	+44 1753 218 757		
France	+33 1 45 29 73 00			
Germany, Europe	+49 6150 104 782	+49 6150 104 223		

Copyright © Thomson Broadcast and Media Solutions All rights reserved.

### Grass Valley Web Site

The [www.thomsongrassvalley.com](http://www.thomsongrassvalley.com) web site offers the following:

**Online User Documentation** – Current versions of product catalogs, brochures, data sheets, ordering guides, planning guides, manuals, and release notes in .pdf format can be downloaded.

**FAQ Database** – Solutions to problems and troubleshooting efforts can be found by searching our Frequently Asked Questions (FAQ) database.

**Software Downloads** – Software updates, drivers, and patches can be downloaded.

# KayakDD Digital Production Switcher

## Important Notice

The following options are only available if the corresponding license is activated:

- Switcher Type
- Number of Inputs
- Number of AUX buses
- Chroma Key 1...4
- Number of Ram Recorder channels
- RGB Correction
- DPM Channels (Channel 1 license is part of basic system; Channels 2,3,4 are licensed with option KDD1-TE, KDD2-TE-1, KDD2-TE-P respectively)
- DPM Extended Effects (licensed with option KDD1-TE, KDD2-TE-1, KDD2-TE-P respectively)

For basic operation it is absolutely necessary to have at least licenses installed for "Switcher Type", "Number of Inputs" and "Number of AUX buses".

***NOTE - Special license handling for DPM channels:***

***Software releases prior to V661 (or higher) enabled the TE-Channel 2 (CH2) even if a license for CH1 was installed only. This was due to delayed basic software features implementation for Transform Engine.***

***With software release V661 (or higher) Channel 2 will again be part of the KDD1-TE, KDD2-TE-P, and KDD2-TE-1 option respectively!***

## Software Installation Note

- Software updates for KayakDD can be downloaded from THOMSON server. After copying on a USB flash memory stick it can be installed from there to any Kayak DD device connected to the switcher network. Prior to the installation procedure the system checks the software update for completeness and against modifications. If a modification is detected, the installation process is not started, and a related error message is displayed. (There is as well a check during Installation, and in the unlikely event of modification during installation the process breaks at 99%) In this case the previous installation remains active. (A CD-ROM with the KayakDD software and documentation is available through customer service.)
- With software release V650 onwards a second CPLD update process is appended on system demand. Refer details in the respective section below.
- A description about the complete installation process you find in the KayakDD Planning and Installation Manual.

## Licenses

### Basics

Kayak DD has a software option licensing system that is activated with software version V630.x onwards. Number and type of possible Licenses can be viewed on the KayakDD menu under '**Install | System licenses | Licenses**'. This menu is also used to add licenses to a system. Licenses are generally applied to an "iButton", a removable knob that is located at the front side on the mainframe main board. So removing (moving) an iButton means to remove (move) functionality. KayakDDs delivered with V630 or higher have already installed at least a set of basic licenses on their "iButton", all others don't have.

### How to install

A license is a text line in the following format (example for a chromakey license):

```
key="LIC_CHROMA_KEY1", "1", "0000:00:00", "9999:12:31", "00:00:00:22:1e:ec", "8-xyz", "3489c00db5b1c548e9daf7fbe0ed67eb21"
```

It contains the

```
license name: LIC_CHROMA_KEY1
license value: 1
start date: 0000:00:00
end date: 9999:12:31
iButtonID: 00:00:00:22:1e:ec
wksID: 5-xyz
licenseKey: 3489c00db5b1c548e9daf7fbe0ed67eb21
```

After having installed software version V630 you can add licenses to the system. There are two ways to do this:

#### With USB memory stick (recommended):

1. Copy the file 'sp\_license.txt' (which contains all your licenses) to the root directory of your memory stick.
2. Connect the KayakDD control panel to the mainframe.
3. Insert memory stick at control panel USB port 2 or 4 (same procedure as for SW installation) and enter the '**Install | System licenses | Licenses**' - menu
4. Push the button '**ReadFile**' and follow the instructions. After installation you have to agree to a mainframe reset.

#### Manual entry with internal GUI keyboard:

1. Connect the KayakDD control panel to the mainframe.
2. Enter the CP menu '**Install | System licenses | Licenses**'
3. Select the option **LIC\_CHROMA\_KEY1** with the menu cursor
4. Push the '**Enter License**' button. This starts a keyboard dialog. A window appears with headline 'Enter value for Chroma Key 1'
  - a) Enter the value **1** (without quotation marks) and press OK the next window appears with headline 'Enter start date for Chroma Key 1'

- b) Enter the value **0000:00:00** (without quotation marks) and press OK (normally this value is already supposed) the next window appears with headline 'Enter end date for Chroma Key 1'
  - c) Enter the value **9999:12:31** (without quotation marks) and press OK (normally this value is already supposed) the next window appears with headline 'Enter iButton ID for Chroma Key 1'
  - d) Enter the value **00:00:00:22:1e:ec** (without quotation marks) and press OK (normally this value is already supposed) the next window appears with headline 'Enter wks ID for Chroma Key 1'
  - e) Enter the value **8-xyz** (without quotation marks) and press OK the next window appears with headline 'Enter license key for Chroma Key 1'
  - f) Enter the value **3489c00db5b1c548e9daf7fbe0ed67eb21** (without quotation marks) and press OK
5. If all values are correct the license will be installed successfully
  6. Enter all the remaining licenses in the same way and do a power cycle at the mainframe afterwards.

## New Features and Changes

### Software Release V6.6.8

#### New features

- New special edit protocol DS0179.668. This is a GVG 200 protocol specialized for BBE2000 editor.

#### Improvements / Changes

- RamRec: During power cycle occasionally the ram recorder content became corrupted in case of video stills only had been recorded.
- RamRec: After software reset on units with battery buffered ram recorder, occasionally the system booted twice.
- New version of AMP Protocol (DS0138.668) allows queuing with THOMSON M-Series.

## Restrictions

- On KayakDD-2 panel the Low Light adjustment is not available.
- Kayak DD panels:  
USB-Ports 1 + 3 are not supported yet (use port 2 or 4 instead)
- Kayak DD panel:  
If a Flash Memory Stick is detected at USB port during startup the panel remains 'black'. Remove the Flash Memory Stick and reboot the system by doing a Power OFF / ON.
- Matrix Wipes are not implemented yet.

## Compatibility

- Saved DPM effects created with software versions earlier than V662 may show a different scaling of some DPM parameters!
- Saved application data created with software versions earlier than V622 cannot be used any more. Loading those applications will deliver unpredictable results!

## Updating the CPLD Firmware

At the end of each installation process the system checks whether an CPLD update is necessary. This is done by comparing the versions of the installed CPLD firmware files on flash with the current CPLD version tags stored within an EEPROM of each hardware board. If the version of at least one file is newer an update of the CPLD is necessary and the user is notified.

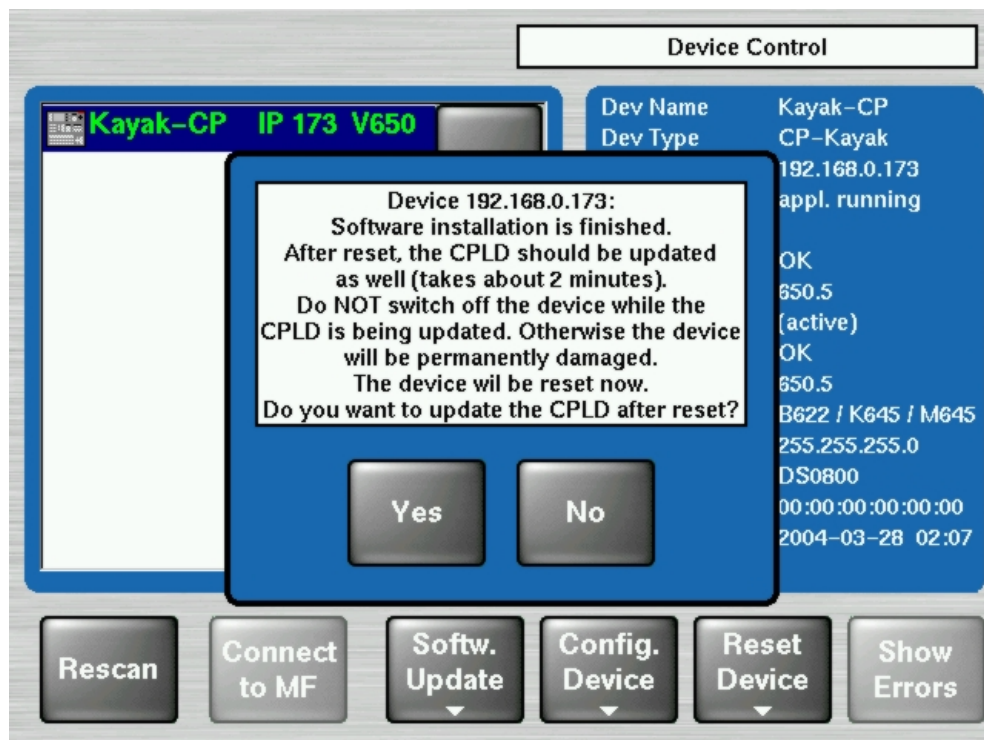


Figure 1 CPLD Update

To skip the CPLD update press **No**, to confirm the update press the **Yes** button (recommended). After the user has confirmed the update, the device will be restarted. During this sequence the CPLD will be updated. The progress of the update procedure is displayed in percent within the Device Control menu. The currently installed file (file name) is shown as well.

***Don't change to a menu other than the Device Control menu after initiating an CPLD update on a Kayak mainframe! Otherwise the update process can't be monitored.***

### **CAUTION!**

***Do NOT switch off the device while the CPLD update is running – monitored by red progress indication. Otherwise the device will be permanently damaged!***

After the CPLD update is finished the system has to be restarted. This brings the device to normal operation mode. If the installation process is terminated from the system refer to section Trouble Shooting below.

## CPLD Update Trouble Shooting

### Inconsistent EEPROM Data

When the software installation process checks whether an CPLD update is necessary or not, it initiates a plausibility check of the EEPROM data of each hardware board. If the EEPROM data is not plausible the user is notified and the update will not be initiated.

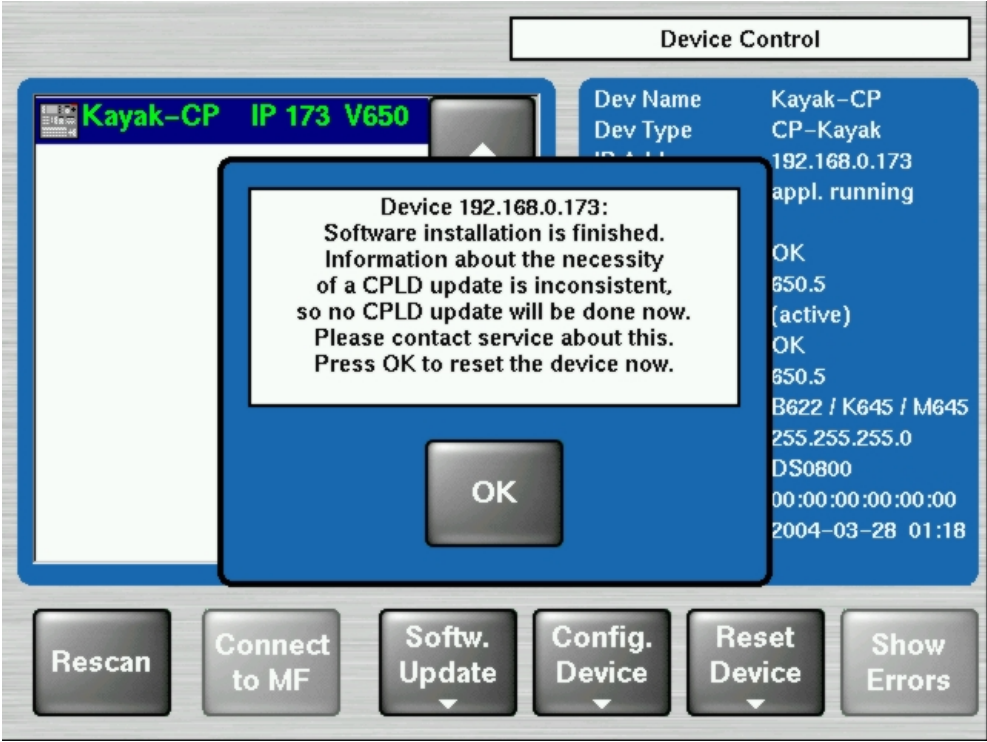


Figure 2 Error Message during CPLD update

The CPLD update can be performed manually at any time. An update even tries to correct inconsistent EEPROM data. Nevertheless an manually CPLD update should always be done by qualified service engineers or experienced users only!



## Wrong Position of CPLD Program Switch

There is a switch (ETX. BSCAN) on each hardware board that controls external or internal programming of the CPLD. If this switch is set to **ON** the CPLD can't be updated by the software installation process. In this case the user is informed by an error message ("**CPLD update failed: validating chain failed, check test switch (EXT. BSCAN)**") and the update process will be terminated. If this happens contact your Thomson Grass Valley service engineers.

To bring the system back to normal operation mode, perform a reset.