

# KayakDD

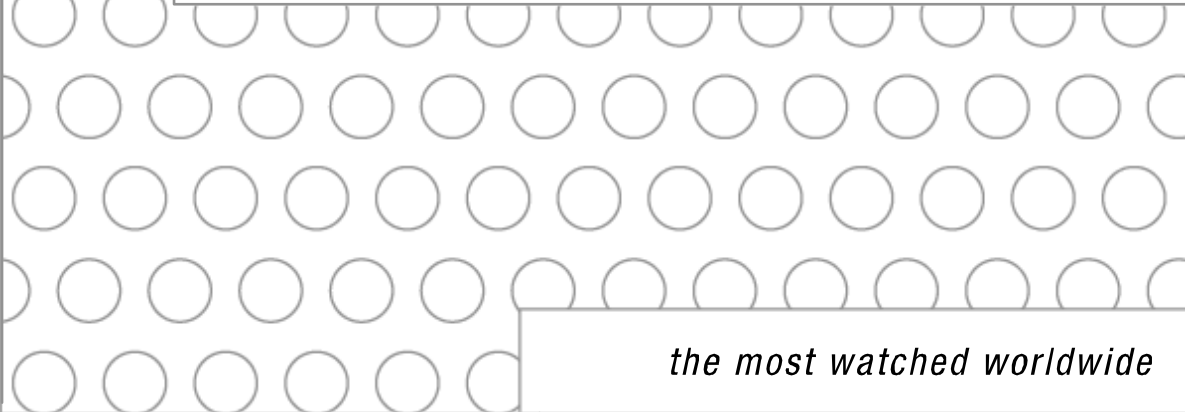
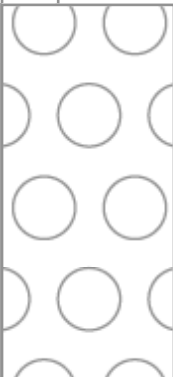
DIGITAL PRODUCTION SWITCHER

## Release Notes



SOFTWARE VERSION 6.7.1

071831410  
JUNE 2005



*the most watched worldwide*

## Contacting Grass Valley

Region	Voice	Fax	Address	Web Site
North America	(800) 547-8949 Support: 530-478-4148	Sales: (530) 478-3347 Support: (530) 478-3181	Grass Valley P.O. Box 599000 Nevada City, CA 95959- 7900 USA	www.thomsongrassvalley.com
Pacific Operations	+852-2585-6688 Support: 852-2585-6579	+852-2802-2996		
U.K., Asia, Middle East	+44 1753 218 777	+44 1753 218 757		
France	+33 1 45 29 73 00			
Germany, Europe	+49 6150 104 782	+49 6150 104 223		

Copyright © Thomson Broadcast and Media Solutions All rights reserved.

### Grass Valley Web Site

The [www.thomsongrassvalley.com](http://www.thomsongrassvalley.com) web site offers the following:

**Online User Documentation** – Current versions of product catalogs, brochures, data sheets, ordering guides, planning guides, manuals, and release notes in .pdf format can be downloaded.

**FAQ Database** – Solutions to problems and troubleshooting efforts can be found by searching our Frequently Asked Questions (FAQ) database.

**Software Downloads** – Software updates, drivers, and patches can be downloaded.

# KayakDD Digital Production Switcher

## Important Notice

The following options are only available if the corresponding license is activated:

- Switcher Type
- Number of Inputs
- Number of AUX buses
- Chroma Key 1...4
- Number of Ram Recorder channels
- RGB Correction
- DPM Channels (Channel 1 license is part of basic system; Channels 2,3,4 are licensed with option KDD1-DPM, KDD2-DPM-1, KDD2-DPM-P respectively)
- DPM Extended Effects (licensed with option KDD1-DPM, KDD2-DPM-1, KDD2-DPM-P respectively)

For basic operation it is absolutely necessary to have at least licenses installed for "Switcher Type", "Number of Inputs" and "Number of AUX buses".

**NOTE - SPECIAL LICENSE HANDLING FOR DPM CHANNELS:**  
*Software releases prior to V661 (or higher) enabled the DPM Channel 2 (CH2) even if a license for CH1 was installed only. This was due to delayed basic software features implementation for Digital Picture Manipulator.*  
*With software release V661 (or higher) Channel 2 will again be part of the KDD1-DPM, KDD2-DPM, and KDD2-DPM-1 option respectively!*

## Software Installation Note

- Software updates for KayakDD can be downloaded from THOMSON server. After copying on a USB flash memory stick it can be installed from there to any Kayak DD device connected to the switcher network. Prior to the installation procedure the system checks the software update for completeness and against modifications. If a modification is detected, the installation process is not started, and a related error message is displayed. There is as well a check during installation, and in the unlikely event of modification during installation the process breaks at 99%. In this case the previous installation remains active.  
A CD-ROM with the KayakDD software and documentation is available through customer service.
- With software release V650 onwards a second CPLD update process is appended on system demand. Refer details in the respective section below.
- A description about the complete installation process you find in the KayakDD Planning and Installation Manual.

## Licenses

### Basics

Kayak DD has a software option licensing system that is activated with software version V630.x onwards. Number and type of possible Licenses can be viewed on the KayakDD menu under '**Install | System licenses | Licenses**'. This menu is also used to add licenses to a system. Licenses are generally applied to an "iButton", a removable knob that is located at the front side on the mainframe main board. So removing (moving) an iButton means to remove (move) functionality. KayakDDs delivered with V630 or higher have already installed at least a set of basic licenses on their "iButton", all others don't have.

### How to install

A license is a text line in the following format (example for a chromakey license):

```
key="LIC_CHROMA_KEY1", "1", "0000:00:00", "9999:12:31", "00:00:00:22:1e:ec", "8-xyz", "3489c00db5b1c548e9daf7fbe0ed67eb21"
```

It contains the

```
license name: LIC_CHROMA_KEY1
license value: 1
start date: 0000:00:00
end date: 9999:12:31
iButtonID: 00:00:00:22:1e:ec
wksID: 5-xyz
licenseKey: 3489c00db5b1c548e9daf7fbe0ed67eb21
```

After having installed software version V630 you can add licenses to the system. There are two ways to do this:

#### With USB memory stick (recommended):

1. Copy the file 'sp\_license.txt' (which contains all your licenses) to the root directory of your memory stick.
2. Connect the KayakDD control panel to the mainframe.
3. Insert memory stick at control panel USB port 2 or 4 (same procedure as for SW installation) and enter the '**Install | System licenses | Licenses**' - menu
4. Push the button '**ReadFile**' and follow the instructions. After installation you have to agree to a mainframe reset.

#### Manual entry with internal GUI keyboard:

1. Connect the KayakDD control panel to the mainframe.
2. Enter the CP menu '**Install | System licenses | Licenses**'
3. Select the option **LIC\_CHROMA\_KEY1** with the menu cursor
4. Push the '**Enter License**' button. This starts a keyboard dialog. A window appears with headline 'Enter value for Chroma Key 1'
  - a) Enter the value **1** (without quotation marks) and press OK the next window appears with headline 'Enter start date for Chroma Key 1'

- b) Enter the value **0000:00:00** (without quotation marks) and press OK (normally this value is already supposed) the next window appears with headline 'Enter end date for Chroma Key 1'
  - c) Enter the value **9999:12:31** (without quotation marks) and press OK (normally this value is already supposed) the next window appears with headline 'Enter iButton ID for Chroma Key 1'
  - d) Enter the value **00:00:00:22:1e:ec** (without quotation marks) and press OK (normally this value is already supposed) the next window appears with headline 'Enter wks ID for Chroma Key 1'
  - e) Enter the value **8-xyz** (without quotation marks) and press OK the next window appears with headline 'Enter license key for Chroma Key 1'
  - f) Enter the value **3489c00db5b1c548e9daf7fbe0ed67eb21** (without quotation marks) and press OK
5. If all values are correct the license will be installed successfully
  6. Enter all the remaining licenses in the same way and do a power cycle at the mainframe afterwards.

## New Features and Changes

### Software Release V6.7.1 (07june2005)

#### New Features

- SNMP agent stuff for NetCentral monitoring added
- DPM: Supporting "x,y,z" gang edit for spin path controls
- DPM: Implemented live mode for DPM menu (basically an effect shot box)
- Kayak-CD setup program "Autorun" added
- Diagnosis menu added
- When controlling Kayak menu via mouse on PS/2 connector, a 'right click' can be used to return to the 'Home' menu.
- DPM: "UseDPMSources" allows the front/back sources to be stored in the effect.
- DPM: "SureTouch" feature added
- DPM: Save/Recall menu supports Cut / Copy / Paste / Swap / Undo.
- DPM: In "Show Timeline" menu the "Constant Duration" button has been activated. "Constant duration" allows operator to delete a keyframe without shifting the position of any other keyframes.
- DPM: In "Key Priority Misc" menu the "Use Src" and "Loop On" buttons have been added.
- DPM: In "Timeline" menu support of playback modes "Loop" and "Bounce" added.
- DPM: Path control feature "All Xforms" added.
- DPM: In 'Timeline' menu, "Modify all" and "Modify Range" buttons activated. Modify Keyframe All applies current keyframe change to all keyframes.
- DPM: Apply "lock" to prevent "delete effect".
- DPM: "Timeline Offset" is now supported and allows any timeline to be shifted to start interpolation at a later time.
- DPM: "DPM Transition". Effects can be controlled with the fader.
- Some remote protocols got an option list extension (all GVG200 based protocols, AMP, Odetics, VDCCP, BVW75). The options can be selected in the protocols install sections.
- RamRec: In "RAM Recorder Transf. Clips to USB" menu, still/clip transfer to/from USB stick added.

## Improvements / Changes

- Abekas\_A57 protocoLL is working now
- In the Kayak menus the timecode generally is displayed with a leading asterisk indicating field1.
- Changes to DPM section
  - DPM timeline 'UserWaits' are displayed per channel
  - DPM supports multiple effects to be recalled by TiM/E-Memo
  - If Z-Priority is set to zero, channels with higher number are placed on top.
  - DPM Timelines are stopping precisely at the user waits.
  - Recorded DPM tape motion commands in macros are controlling the right effect now during macro play
  - LOOP and BOUNCE mode are now recalled correctly
  - Problems with PAUSE after changing start time of a channel has been fixed
- Wipe menu distinguishes between Wipe and UserWipe menu.
- From now on an application is always saved on that panel (CP or SP) where the command came from. Overwriting a saved application is executed after passing a warning dialog.
- Ram Recorder file transfer menu now also displays files written in lower case letters.
- Power supply diagnosis added
- Software crash removed when using DPM transition and disable channels afterwards.
- Obsolete Sidepanel controls are hidden (all related to Ext. DSK and RSAT).
- Possible application name length during application save has been increased from 26 to 31 characters.
- Protocol options are implemented in Kayak menus. Determines special behavior for some protocols. E.g. GVG-200 protocol supports GVG native wipe pattern assignments.
- DPM: Tape motion commands are even supported when global channel is selected in Timeline menu. In this case the current effect (e.g. the last one loaded) is controlled.
- TiM/E-Memo: All TiM/E Memo effects are stored on the flash disk now. During operation they are hold as a copy on a RAM disk.
- ColorLimiter for BGD Mattes now works correct with TiM/E Memo recalls. When color limiter was in a limiting state, subsequent recall of legal colors had been driven different than stored.
- DPM: In the 'Timeline' Menu some button labels have been changed ('Scroll', 'Start Time')
- DPM: Keyframe duration displays the duration of the current keyframe(s) when channels have the same duration value. Also allows modification of the applied duration prior to insert or modification of a keyframe.

- The following DPM defects have been repaired:
  - When rewinding an effect, the enables are being reset and prevent "disabling" a selected level.
  - DPM Timeline problem of continuous run beyond end of effect
  - During editing and immediately following the insert of a pause, reverse run fails to pause.
  - Pauses are not following the keyframes after subsequent shifts of position.
  - Delete and re-insert of pause sometimes leaves unwanted keyframes.
  - If an effect with different durations for ch1 and ch2 is at END, and REV Play, than both channels start simultaneously.
  - Page Turn Angle does not allow negative values.
  - Power off with global off, comes back with global on.
  - Global enables are failing upon recall
  - Upon reboot of panel, timelines were not being redrawn with initialization.
  - The interpolation path near parameter limit values (min/max) sometimes goes beyond the limits.
  - When converting from 4x3 to 16x9, in some cases the values are not rescaled
  - Tape motion bar in timelines menu does not track correctly
  - Keyframe editing sometimes does not refresh the tape motion bar state correctly.
  - Defect in which the "save" action was automatically updating the enables to the current enables, but this was not the desired result when using copy/paste
  - Pauses are sometimes shown on a channel that has no pause if another channel that is no longer enabled once had a pause at that point.
  - Global enables in setup menu are not always updated correctly
  - Repair file driver for effect Info

## Restrictions

- On KayakDD-2 panel the Low Light adjustment is not available.
- Kayak DD panels:  
USB-Ports 1 + 3 are not supported yet (use port 2 or 4 instead)
- Kayak DD panel:  
If a Flash Memory Stick is detected at USB port during startup the panel remains 'black'. Remove the Flash Memory Stick and reboot the system by doing a Power OFF / ON.
- Matrix Wipes are not implemented yet.



## Compatibility

- DPM effects built with software version earlier than V671 sometimes appeared in a different position when loading an effect from a stored application. The reason for this was the settings of the global channel that has been stored only partially. If those problems occur with stored DPM effects the following work around repairs it:
  - a) Recall the effect
  - b) Put the effect into edit mode by pushing "Edit", effectNum, "Enter",...
  - c) Now go to the Misc/setup and turn off the "globals"
  - d) Save the effect. The new state (globals off) will be saved without changing anything else in the effect.
- With software version DS0205.671 protocol options have been implemented in some protocols (see modifications list). When updating from software versions prior to V671 those protocols have to be reselected to establish connection. The same procedure has to be applied if old environment files are reloaded into the system.
- Saved DPM effects created with software versions earlier than V662 may show a different scaling of some DPM parameters!
- Saved application data created with software versions earlier than V622 cannot be used any more. Loading those applications will deliver unpredictable results!

## Updating the CPLD Firmware

At the end of each installation process the system checks whether an CPLD update is necessary. This is done by comparing the versions of the installed CPLD firmware files on flash with the current CPLD version tags stored within an EEPROM of each hardware board. If the version of at least one file is newer an update of the CPLD is necessary and the user is notified.

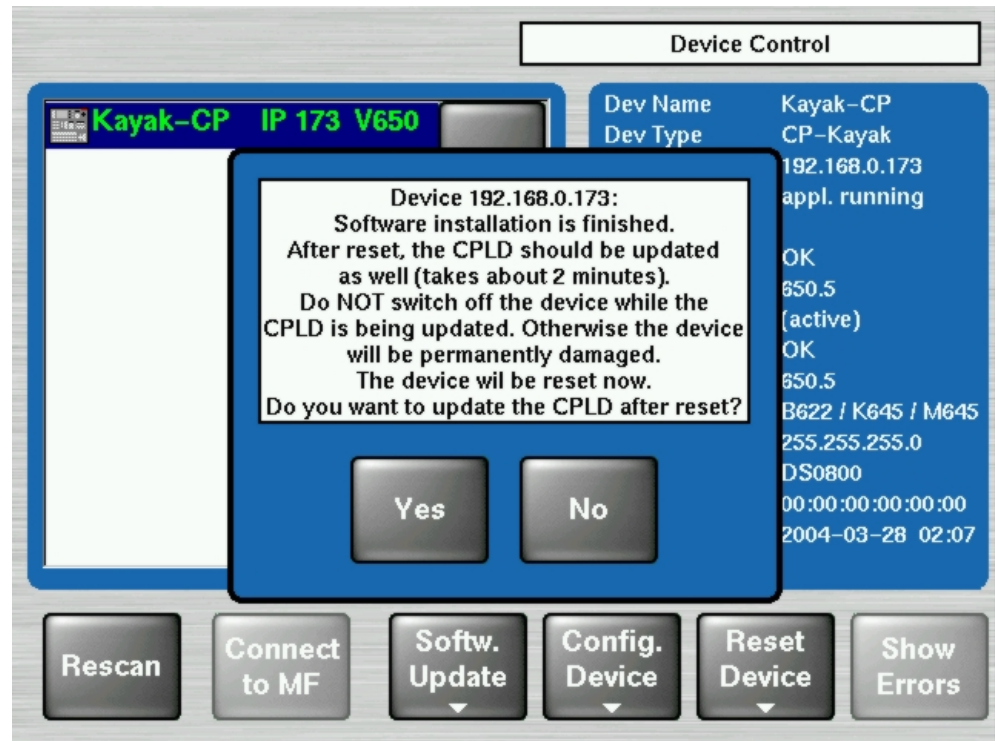


Figure 1 CPLD Update

To skip the CPLD update press **No**, to confirm the update press the **Yes** button (recommended). After the user has confirmed the update, the device will be restarted. During this sequence the CPLD will be updated. The progress of the update procedure is displayed in percent within the Device Control menu. The currently installed file (file name) is shown as well.

***Don't change to a menu other than the Device Control menu after initiating an CPLD update on a Kayak mainframe! Otherwise the update process can't be monitored.***

### **CAUTION!**

***Do NOT switch off the device while the CPLD update is running – monitored by red progress indication. Otherwise the device will be permanently damaged!***

After the CPLD update is finished the system has to be restarted. This brings the device to normal operation mode. If the installation process is terminated from the system refer to section Trouble Shooting below.

## CPLD Update Trouble Shooting

### Inconsistent EEPROM Data

When the software installation process checks whether an CPLD update is necessary or not, it initiates a plausibility check of the EEPROM data of each hardware board. If the EEPROM data is not plausible the user is notified and the update will not be initiated.

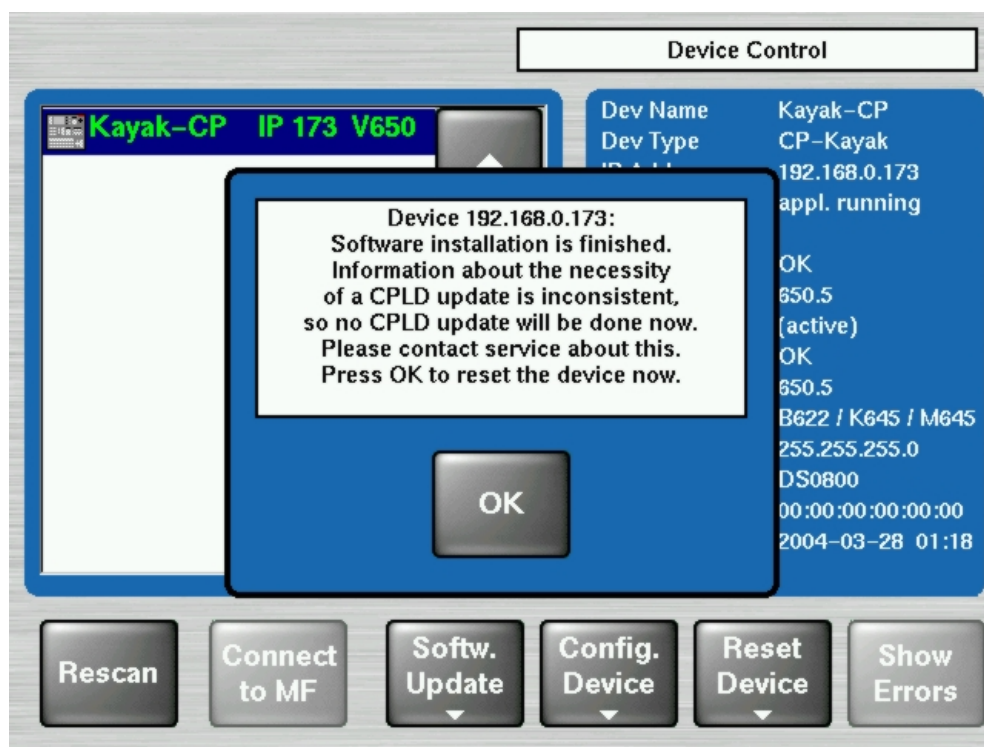


Figure 2 Error Message during CPLD update

The CPLD update can be performed manually at any time. An update even tries to correct inconsistent EEPROM data. Nevertheless an manually CPLD update should always be done by qualified service engineers or experienced users only!

### **Wrong Position of CPLD Program Switch**

There is a switch (ETX. BSCAN) on each hardware board that controls external or internal programming of the CPLD. If this switch is set to **ON** the CPLD can't be updated by the software installation process. In this case the user is informed by an error message ("**CPLD update failed: validating chain failed, check test switch (EXT. BSCAN)**") and the update process will be terminated. If this happens contact your Thomson Grass Valley service engineers.

To bring the system back to normal operation mode, perform a reset.