



grass valley

A **BELDEN** BRAND

# K-FRAME

KAYENNE/KARRERA/GV KORONA  
VIDEO PRODUCTION CENTER

Release Notes

Software Version 10.0

# CERTIFICATE

Certificate Number: 510040.001

The Quality System of:

## Grass Valley, A Belden Brand and its Grass Valley Affiliates

<b>Headquarters:</b> 3499 Douglas-B Floreani St. Laurent, Quebec H4S 2C6 Canada	3030 NW Aloclek Drive Hillsboro, OR 97124 United States
Street Bergschot 69 4817 PA Breda The Netherlands	125 Crown Point Court Grass Valley, CA 95945 United States

Including its implementation, meets the requirements of the standard:

## ISO 9001:2008

Scope:

St. Laurent HQ: The design, manufacture and support of video and audio products and systems.

Grass Valley and Hillsboro: Design, outsource manufacture and support.

Breda: Design, manufacture, including outsource manufacture, and support.

This Certificate is valid until: June 14, 2018

This Certificate is valid as of: June 14, 2015

Certified for the first time: June 14, 2000

Dr. Cem O. Onus  
Managing Director, Business Assurance  
DEKRA Certification, Inc.

The method of operation for quality certification is defined in the DEKRA Master Services Agreement. Integral publication of this certificate is allowed.

DEKRA Certification, Inc.  
1120 Welsh Road, Suite 210  
North Wales, PA 19454  
USA  
Ph: (215)997-4519  
Fax: (215)997-3810  
ISO 9001 Cert 02642015 Rev C

Accredited By:  
ANAB





grass valley

A **BELDEN** BRAND

# K-FRAME

## VIDEO PRODUCTION CENTER

Release Notes

Software Version 10.0

## Copyright & Trademark Notice

Copyright © 2015, Grass Valley USA, LLC. All rights reserved.

Belden, Belden Sending All The Right Signals, and the Belden logo are trademarks or registered trademarks of Belden Inc. or its affiliated companies in the United States and other jurisdictions. Grass Valley is a trademark or registered trademark of Grass Valley USA, LLC. Belden Inc., Grass Valley USA, LLC, and other parties may also have trademark rights in other terms used herein.

## Grass Valley Web Site

The Grass Valley Web ([www.grassvalley.com](http://www.grassvalley.com)) site offers the following:

**Online User Documentation** — Current versions of product catalogs, brochures, data sheets, ordering guides, planning guides, manuals, and release notes are available.

**FAQ Database** — Solutions to problems and troubleshooting efforts can be found by searching our Frequently Asked Questions (FAQ) database.

**Software Downloads** — Download software updates, drivers, and patches.

## Grass Valley Technical Support

For technical assistance, contact our international support center, at 1-800-547-8949 (US and Canada) or +1 514 333 1772.

To obtain a local phone number for the support center nearest you, please consult the Contact Us section of Grass Valley's Web site ([www.grassvalley.com](http://www.grassvalley.com)).

An online form for e-mail contact is also available from the Web site.

## Recycling

Visit [www.grassvalley.com](http://www.grassvalley.com) for recycling information.

# Contents

Copyright & Trademark Notice .....	4
Grass Valley Web Site .....	4
Grass Valley Technical Support .....	4
Recycling .....	4
<b>Kayenne/Karrera/GV Korona K-Frame Release Notes .....</b>	<b>7</b>
Introduction .....	7
New in Release 10.0 .....	7
Firmware Update for Version 10.0 .....	8
New K-Frame GV Korona .....	8
About RossTalk Xpression .....	8
Configure an External Device for Xpression Control .....	8
Take Xpression IDs .....	9
About Using Extended GFX Xpression Controls .....	10
Fire Xpression GPI Sets .....	11
About the K-Frame Software Update .....	13
Third-party Updates .....	13
Sample Files .....	13
Materials Required .....	14
Update the K-Frame Software .....	14
Backup Current Configuration and Effects Files .....	14
Deploy Switcher Update Package Files and Installer .....	15
K-Frame Installer Program Description .....	16
Update the System .....	18
About Updating Spare Kayenne Control Panel Modules .....	19
Update/Install the Menu Panel Application .....	19
About Updating the Host Address Decoder (HAD) FPGA .....	22
Clear NV RAM for Control Panel and Frame .....	22
Install .NET for First Time Menu on PC Installation .....	23
Soft Panel Installation .....	24
Install NetConfig and Newton Configurator (Optional) .....	24
Check Software Versions .....	25
Confirm System Operation .....	25
Backup New Configuration and Effects Files .....	26
Update Other Grass Valley Switcher Systems Software .....	26
Individual Switcher System Component Update .....	26
K-Frame Software Removal With Windows OS .....	26
Deployment Archive Files .....	27
Calibrate the Lever Arm and Joystick .....	27
K-Frame System Default IP Addresses .....	27
IP Addresses and Single Control Surface Systems .....	28
IP Addresses and Multiple Control Surfaces and Suites .....	28



# *Kayenne/Karrera/GV Korona K-Frame Release Notes*

## **Introduction**

This document describes new features, installation, and other information specific to Kayenne/Karrera K-Frame Video Production Center Release 10.0 software. See [page 14](#) for system update instructions.

### **New in Release 10.0**

- New firmware with Version 10.0 requires a HAD update (see [Firmware Update for Version 10.0 on page 8](#))
- RossTalk added for Xpression Control (see [About RossTalk Xpression on page 8](#))
- Software update instructions (see [About the K-Frame Software Update on page 13](#))

## Firmware Update for Version 10.0

Each CPU or Image Store board installed in a Grass Valley K-Frame Video Processing Frame has a PCI Express endpoint for communication with the host processor. These PCI endpoints are governed by the HAD FPGA. Software updates can include firmware updates for these endpoint HADs.

Refer to the *K-Frame Kayenne/Karrera/GV Korona Installation & Service Manual* for complete instructions on verifying and performing HAD firmware updates.

**CAUTION** HAD (Host Address Decoder) FPGA (Field Programmable Gate Array) updates are to be performed by qualified personnel only.

## New K-Frame GV Korona

GV Korona K-Frame S-series systems have a built-in touchscreen menu system, innovative touch screens in the transition areas, and a K-Frame S-series video processing engine. The systems come pre-configured with 1 M/E or 2 M/Es, 32 inputs and 16 outputs, and software licenses that include floating iDPMs and chromakeyers, 2D DPMS for each keyer, internal 16 GB ImageStore, two multiviewers, and FlexiKey functionality.

For more information, see the *K-Frame Kayenne/Karrera/GV Korona Installation Planning Guide, Installation & Service Manual, and User Manual* or go online at [www.grassvalley.com](http://www.grassvalley.com).

## About RossTalk XPression

K-Frame systems provide control of up to four external XPression graphic devices and the ability to fire up to four GPI triggers, using RossTalk. XPression controls can be recorded into macros that can be triggered from any K-Frame Control Panel or menu application.

## Configure an External Device for XPression Control

You can configure up to four XPression devices; GFX 1-GFX 4, allowing you to send commands from the Control Panel or menu to your external device.



You can take IDs, fire up to four GPI sets, clear buffers, and override or fine tune the controls.

1. Select **Eng Setup, Ports & Devices, External Devices** in the GV application menu.



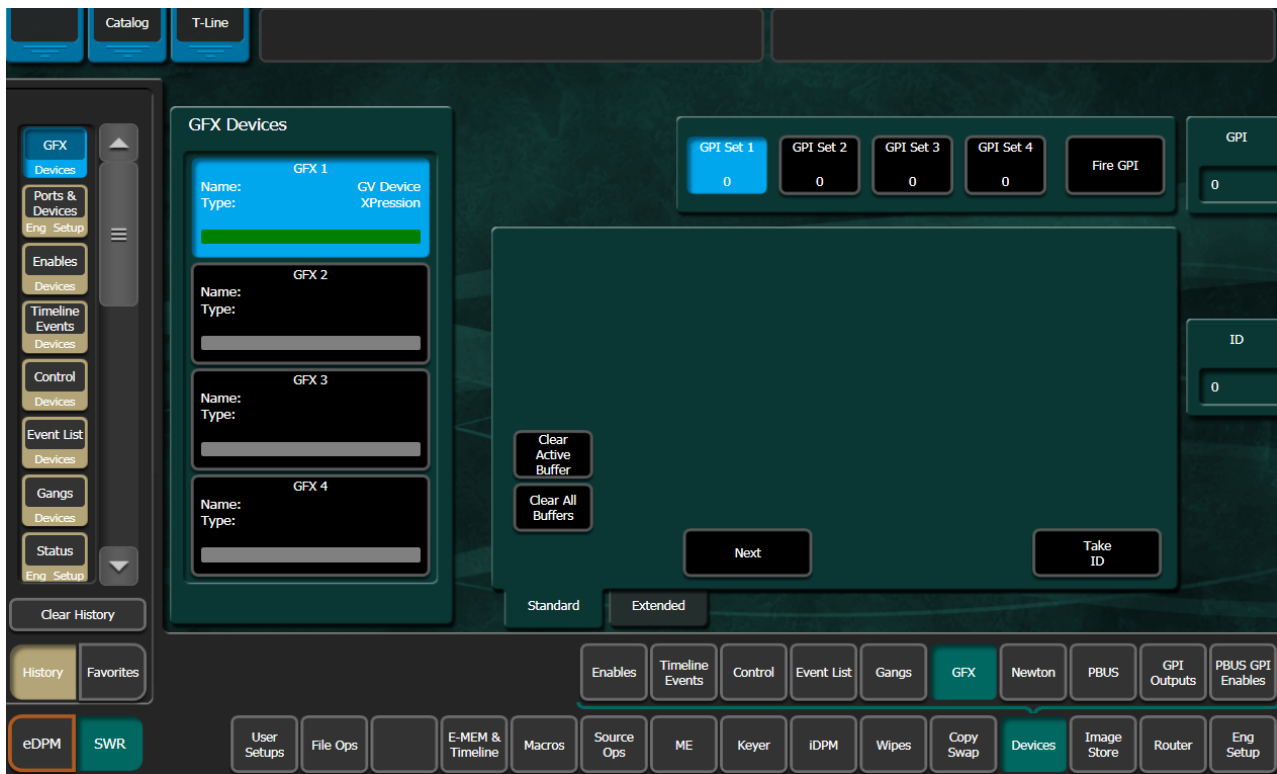
2. In the External Devices pane, scroll down until GFX 1-GFX 4 is displayed and select one.
3. Select the **Device Name** data pad, enter a name using the pop-up keypad, and select **Enter**.
4. Select the IP Address data pad and enter the IP Address of an XPression device in the pop-up keypad and select **Enter**.

## Take XPression IDs

The Standard GFX workflow allows you to take IDs from an external XPression device then take the next IDs in the list. Functions are also provided to clear the active buffer and all buffers.

1. Select **Devices, GFX** in the menu.

Figure 1. GFX Standard Menu



2. Select an ID by either scrolling with the soft knob or selecting the ID data pad and entering an ID and selecting **Enter**.
3. Select **Take ID**.
4. Optionally, select **Next** to take the next ID in the list; repeat to take the next ID and so on.
5. To clear the buffers, either select the **Clear Active Buffer** or **Clear All Buffers**.

## About Using Extended GFX XPression Controls

Setup XPression controls for an ID, a buffer, and a layer, and send those commands to your external device. Typically, the commands are embedded in the ID but the menu function buttons allow you to override or fine tune those controls and clear buffers.

1. Select **Devices**, **GFX**, **Extended** in the menu to access the GFX XPression controls.

Figure 2. Extended GFX XPression Control Buttons.



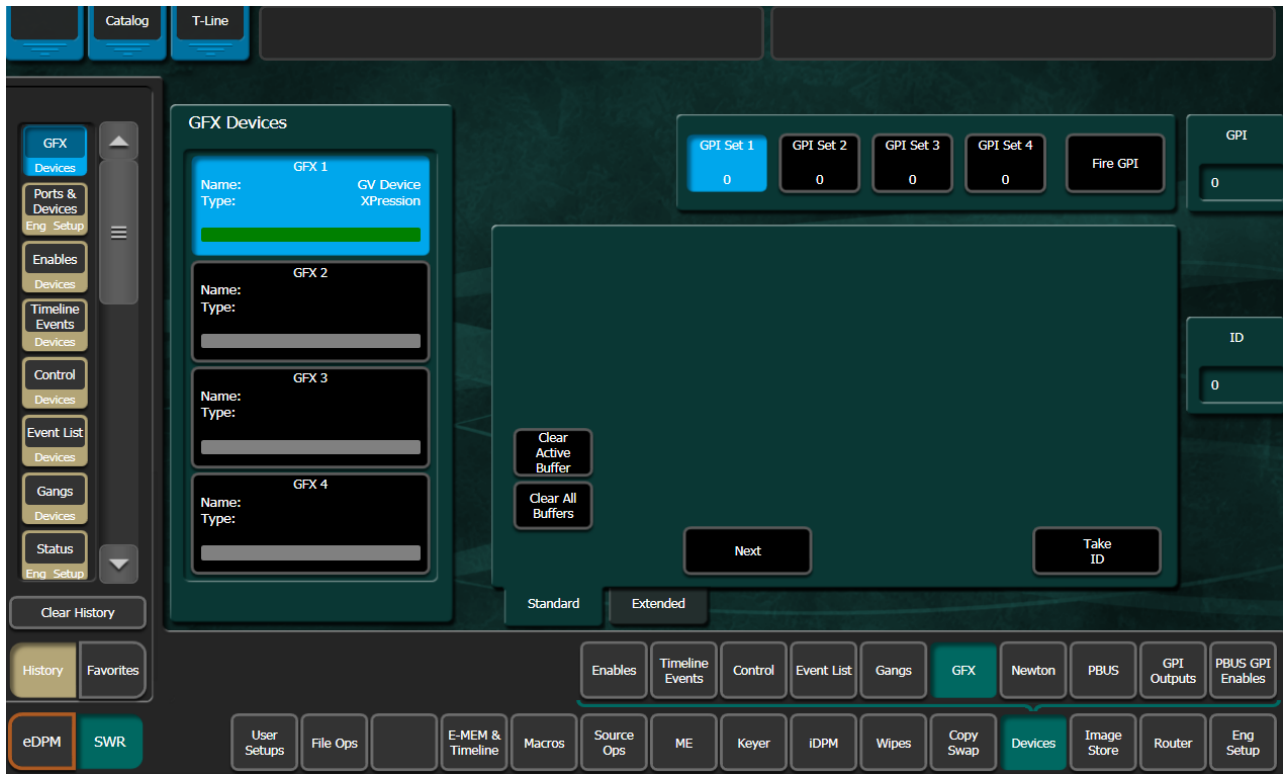
2. Select an **ID**, **Buffer**, or **Layer** by either scrolling with the soft knob or selecting the ID data pad and entering an ID and selecting **Enter**.
3. Use the function buttons in the Extended pane to set controls for IDs, Buffers and Layers

## Fire XPression GPI Sets

There are four XPression GPI Sets that can be fired from the GV switcher, GPI Set 1-GPI Set 4. There is macro support for firing the GPIs. Creating a macro to fire a GPI means the GPI ID you preset to one of the four GPI buttons will be fired when the macro is triggered; not GPI 1-GPI 4 presets but the GPI ID assigned to each.

1. Select **Devices**, **GFX** in the menu.

Figure 3. GPI Fire Menu Pane



2. Select a GPI number you have configured in the external device by either scrolling with the soft knob or selecting the GPI data pad and entering the GPI and selecting **Enter**. Repeat for each GPI Set preset.
3. Select one of the GPI presets, then select **Fire GPI**.

**Note** Only one GPI preset can be fired at a time.

4. You can also create a macro to select and fire the GPI preset ID, from the Control Panel or Macros menu.

## About the K-Frame Software Update

K-Frame systems are shipped with the current software version installed on the Frame and Control Surface. Updates to K-Frame system software are available for download from the Grass Valley website. Software installation tools are provided with each update package.

The K-Frame Deployment Tool extracts and copies Grass Valley switcher system files to a Menu Panel or PC. These files include the K-Frame Installer Program.

The K-Frame Installer Program is used to install the extracted software to Grass Valley Video Processor Frame(s) and Control Panel(s) over the network. The K-Frame Installer Program also launches other installation tools (wizards). One wizard installs the Menu application directly on the Menu Panel or PC running the installer program. If multiple Menu Panels (or PCs running the Menu application) exist, each must be updated individually. Installation wizards can also be launched for the KSP and NetConfig features.

### Third-party Updates

Certain Third-party libraries are needed on the PC that runs the Menu software and Switcher Installer software. These “Third-party Updates” are available in a directory on the Grass Valley Switcher Software Download Site. They are also included on the Switcher Software USB Memory Stick shipped with each Grass Valley switcher system. The Third Party Updates include a Menu Auditor program. The Menu Auditor Program is run to verify that the required Third Party Updates are installed on a PC or Menu PC. The Menu Auditor will indicate which updates need to be installed to create an up-to-date system. Not having the updates installed could cause the menu to be unstable or not run at all.

To check for the third party updates on a PC or the menu system, run the Menu Auditor Program and press Scan. The Auditor will check each relevant install and indicate the state of the computer environment. The Diagnose button runs the scan and puts windows machine data into a file for diagnostic purposes.

The user can bring the environment up to date by installing identified Third Party Updates using the Menu Auditor by selecting the Install button displayed if updates are required.

### Sample Files

Sample show files or other elements and instructions for use are available with an installer from the Grass Valley website starting with version 8.0. When upgrading, install the samples after the initial software upgrade;

visit [www.grassvalley.com](http://www.grassvalley.com). The installer can be used to place the K-Frame samples in the C:\K\_Frame\user\Samples directory on the GV Switcher system. New K-Frame systems are shipped with the sample directory installed.

**Note** For Compact S-series Frames, samples that are built using more than four keyers will need some customization before incorporating those elements into a production.

## Materials Required

You will need the following materials for this update:

- Version 10.0 Software; **K-FrameSetup.exe**, which can be downloaded from the Grass Valley Customer Support website along with the latest Clip-Store/Summit software, Release Notes, and Release Notes Addendum, and copied to a USB stick,
- Backup media for configuration and effects files,
- USB mouse and keyboard, and
- a Menu Panel, or user PC, properly configured on the switcher system network.

## Update the K-Frame Software

### Backup Current Configuration and Effects Files

This software update procedure assumes your Grass Valley switcher system is fully operational with all network communications properly configured. Refer to the *K-Frame Kayenne/Karrera/GV Korona Installation and Service Manual* for configuration instructions.

1. Save your system configuration files (Eng Setup, User Setups), and your operational registers (EMEM, Macros, etc.) and other settings. You can create a Show file that contains all this information. See the *K-Frame Kayenne/Karrera/GV Korona User Manual* for file operations instructions.

**Note** A convenient location to save these backup files is on the USB stick of the software version that created the files (the older software being updated). Create a new folder on that older software USB stick for the file and name the Show file with the current date.

2. Store the backup media in a safe place. You may want to use these files if you decide to back down to that earlier software version.

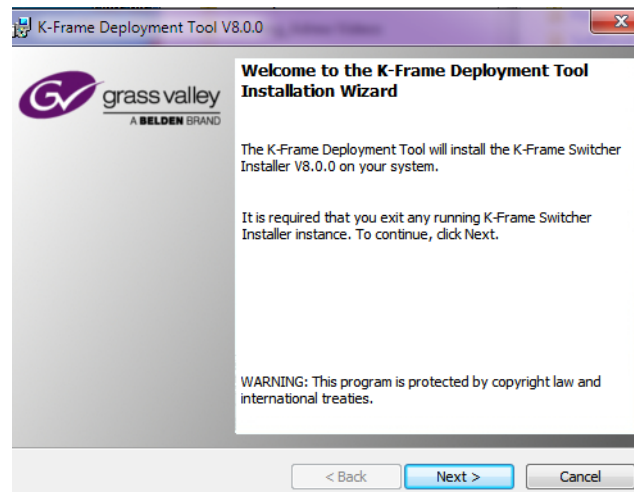
## Deploy Switcher Update Package Files and Installer

1. Exit the Menu application and any other applications that may be running on the Menu Panel or PC.
2. Disable any virus protection, Windows firewall, and any other firewall protections that may have been installed on the Menu Panel or PC. Firewalls must be inactive to allow switcher system software installation over the network.
3. Run the K-Frame Setup application. Either:
  - Insert the K-Frame Software USB stick into an available port on the Menu Panel or PC. Locate the removable disk in My Computer and double-click on the **K-FrameSetup.exe** and click **OK**.
  - or -
  - Download the **K-FrameSetup.exe** file from the Grass Valley download site, double-click on the file, then click **OK**.

**Note** If the same K-Frame Deployment Tool version files are detected, a Repair/Remove screen is displayed, allowing re-installation or removal of the Deployment files.

4. The K-Frame Deployment Tool will then launch, click **Next**.

Figure 4. K-Frame Deployment Tool Welcome Screen



5. Accept the license agreement and click **Next**.
6. Click **Next** to accept the default deploy location. Alternatively, you can Browse to a different location to deploy the files. The Ready to Install the Application Screen appears next.
7. Click **Next** to deploy the files.

8. When the deployment completes the K-Frame Installer Program will launch automatically.

Figure 5. Installer Icon

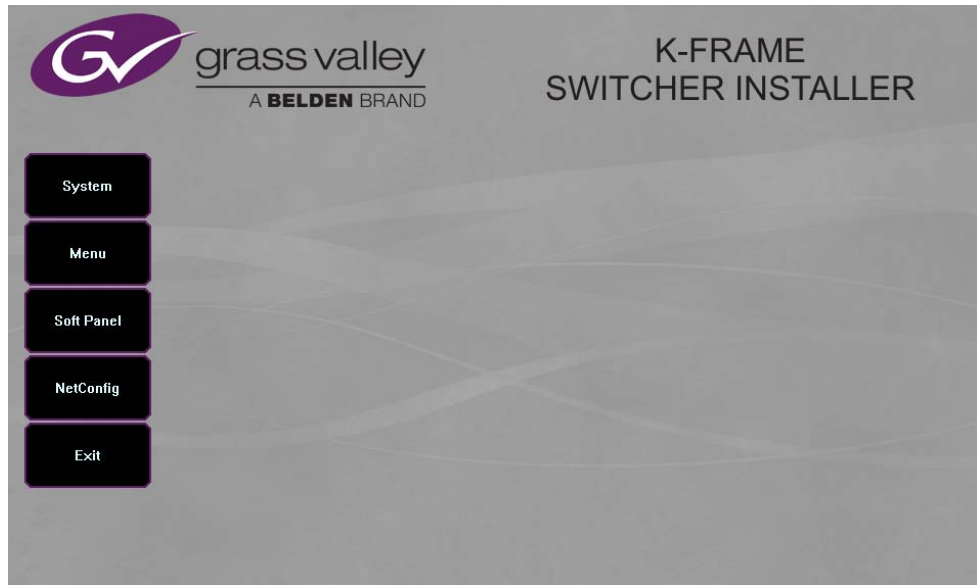


After the switcher files have been deployed, the K-Frame Installer Program can be launched at any time by clicking on its desktop icon.

## K-Frame Installer Program Description

The K-Frame Installer Program initial screen has buttons on the left used to select various installers.

Figure 6. K-Frame Installer Program Initial Screen



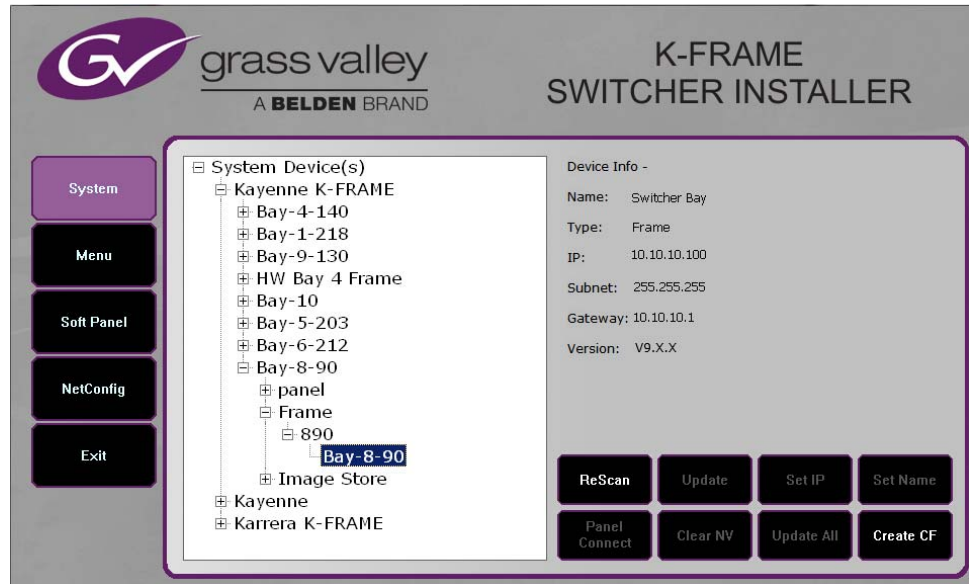
The **Exit** button at the bottom left closes the K-Frame Installer Program.

When **System** is selected, a screen appears with an expandable central hierarchy window, information on the upper right, and function buttons on the lower right.



Navigate to the Kayenne or Karrera device in the hierarchy to display information for that device or install software. The same methods of installation work for both products.

Figure 7. K-Frame Installer Program Expanded Hierarchy Window



**System Devices** is at the top of the hierarchy window. Clicking on that item displays the types of switchers (**Kayenne** and/or **Karrera**) residing on the network. Clicking on a switcher type displays the system names present on the network of that switcher type. Each system name is taken from the Video Processor Frame name. Clicking on a system name reveals **Frame**, **Panel**, and optional **Image Store** items for that system, which when opened allows selection of the individual devices making up that system. When a specific device is selected, information for it is displayed on the right. This hierarchy allows easy identification of each switcher system's components when multiple switchers reside on the same network.

The K-Frame Installer program has the following other features, accessed by clicking on its labeled button:

**Rescan** - Re-scans the network for devices. This refreshes the screen to show the currently connected components and any modified system names.

**Update** - Updates the software on the selected device using the software deployed with this K-Frame Installer version.

**Set Name** - Opens a window allowing you to change the name of the selected device.

**Set IP** - (Control Panel selected in hierarchy window) - Opens a window allowing you to enter the IP address the Control Panel will use to communicate with the Video Processor Frame.

**Clear NV** - (Frame or Control Panel selected) Clears NV Memory.

**Update All** - (System selected) Updates software to all devices for the selected system, excluding Menus.

**Create CF** - Allows the creation of a Control Panel Compact Flash Card onto another CF Card.

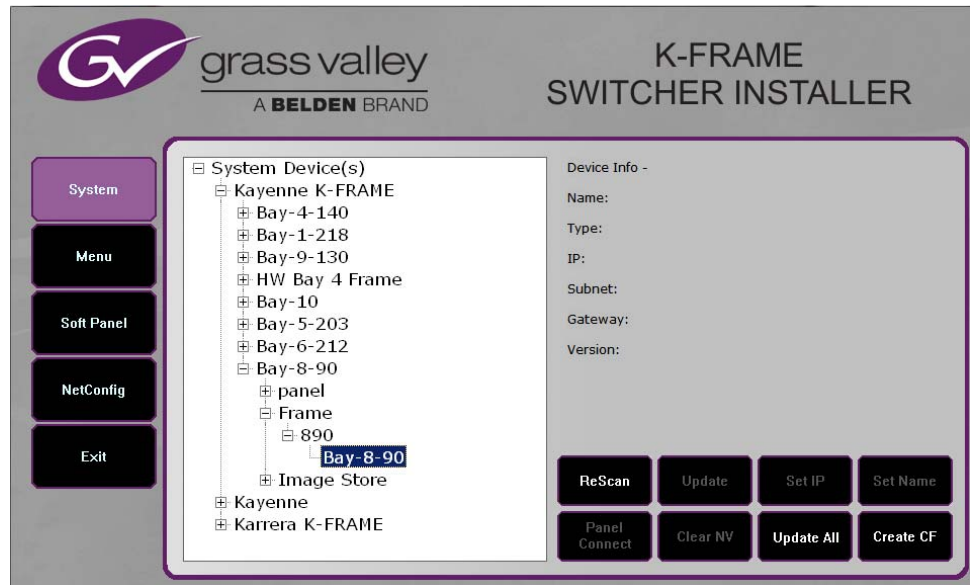
**CAUTION** This formats the CF card.

## Update the System

A system's Video Processor Frame, Control Panels, and optional Image Stores can be updated with one operation.

1. With the K-Frame Switcher Installer Program launched, click on the **System** button.

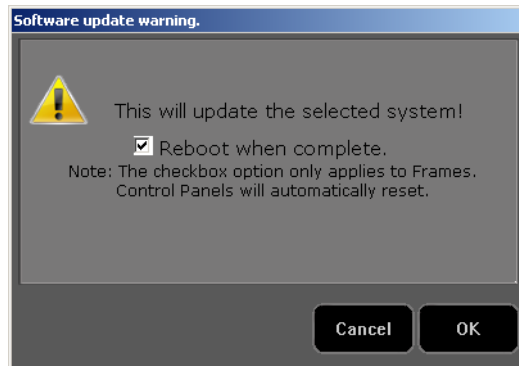
Figure 8. K-Frame Installer, System Button Selected



2. Each K-Frame Switcher system consists of a Video Processor Frame, associated PCU(s) (Control Panels), and optional Image Store. Use the mouse to navigate to the desired system (not an individual system device). When a system has been selected the **Update All** button becomes active.

3. Click **Update All**. The following reboot message appears.

Figure 9. K-Frame Installer, Reboot Screen



4. If the **Reboot when complete** box is checked, the Video Processor Frame, optional Image Store, and all associated Control Panels will automatically reboot after the software update. If the box is not checked, you will need to manually reboot the Video Processor Frame and optional Image Store after the software files have finished being transferred to them. Control Panels are always rebooted after a software update.
5. Click **OK**.
6. Click **Finish** when complete.

## About Updating Spare Kayenne Control Panel Modules

The Kayenne K-Frame Control Panel FPGAs will automatically be updated with software installation. However spare Kayenne Control Panel Modules must be connected to the Control Panel after initial software installation and the Control Panel software re-installed so all modules are loaded with the current FPGAs and ready for use when needed.

**CAUTION** Do not interrupt power to GV switcher systems during software installation; the FPGAs will revert to an older version. If power is lost during software installation, install the software once the power has been restored.

## Update/Install the Menu Panel Application

The first-time installation of the Menu application onto a user PC may require installing Windows .NET Framework software. See [Install .NET for First Time Menu on PC Installation on page 23](#) for more information.

The K-Frame Deployment Tool must be run on each Menu Panel or PC onto which you will be installing the Menu Panel application. See [Deploy Switcher Update Package Files and Installer on page 15](#).

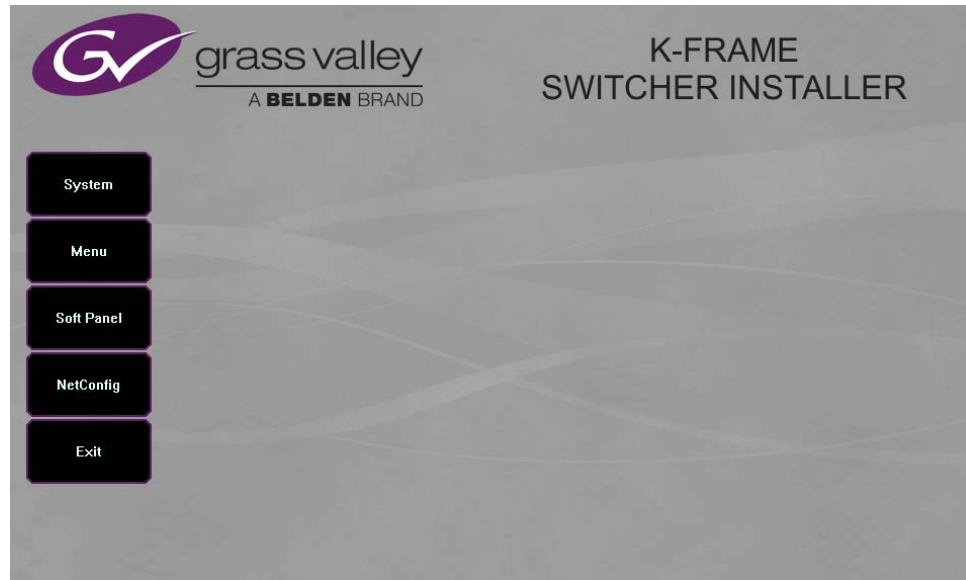
**CAUTION** For Menu on PC, you must be logged on as administrator or the installation will fail.

Figure 10. Installer Icon



1. Click on the K-Frame Switcher Installer desktop icon, if necessary, to launch the K-Frame Switcher Installer Program.

Figure 11. K-Frame Installer Program Initial Screen



2. Click the **Menu** button. The K-Frame Menu Installation tool will launch.

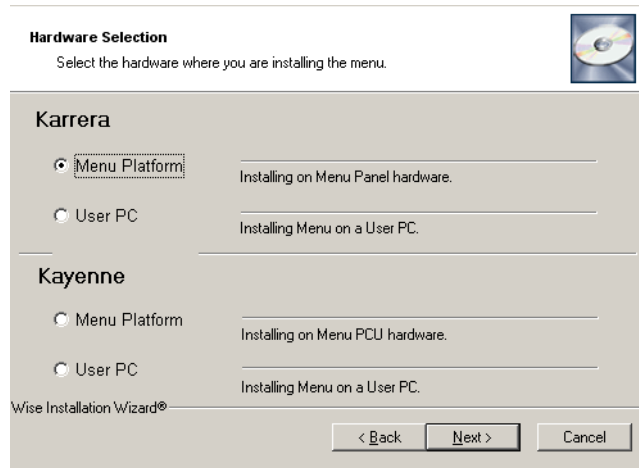
Figure 12. K-Frame Menu Installer



3. Click **Next**.

- In either the Karrera or Kayenne Control Panel area, choose either **Menu Platform** (the Touch Screen Menu Panel) or **User PC**, and click **Next**.

Figure 13. K-Frame Menu Installer, Hardware Selection



- Enter a name and organization in the User Information screen, leave the **Anyone who uses this computer** setting selected, and click **Next**.

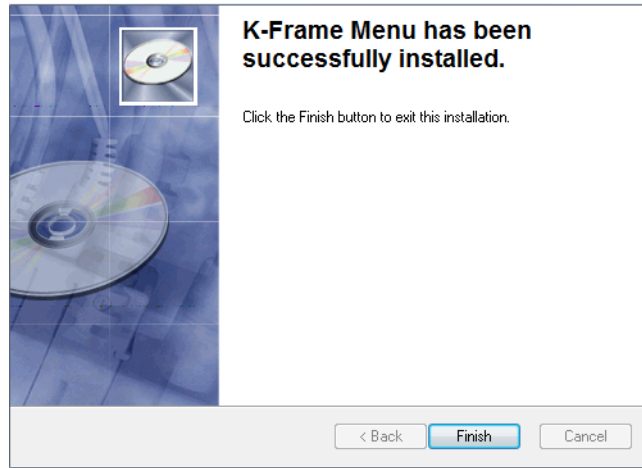
**Note** Selecting **Only for me** limits some settings to the currently logged in user. This may be appropriate if the Menu application is installed onto a PC shared by several users. However, this is not a fool-proof security method and should not be relied on for mission-critical applications.

- Click **Next** to accept the default installation location. Alternatively, you can Browse to a different location to install the application.
- In the Ready to Install the Application menu, click **Next**.

- When done, the Menu Successfully Installed screen appears, Click **Finish**.

If you installed onto Menu hardware you will be prompted to reboot the computer.

Figure 14. K-Frame Menu Installer Success



- Click **Exit** and answer **Yes** to the prompt to exit the K-Frame Installer.

Figure 15. Switcher Menu Icon



Clicking on the K-Frame Menu icon now launches the new version of the Menu Panel application.

## About Updating the Host Address Decoder (HAD) FPGA

Each CPU or Image Store board installed in a Grass Valley K-Frame Video Processing Frame has a PCI Express endpoint for communication with the host processor. These PCI endpoints are governed by the HAD FPGA. Software updates can include firmware updates for these endpoint HADs.

For HAD FPGA update instructions, see the maintenance information in the *K-Frame Kayenne/Karrera/GV Korona Installation & Service Manual*.

**CAUTION** It is recommended that HAD (Host Address Decoder) FPGA (Field Programmable Gate Array) updates are performed by qualified personnel only, i.e. an EIC (Engineer In Charge).

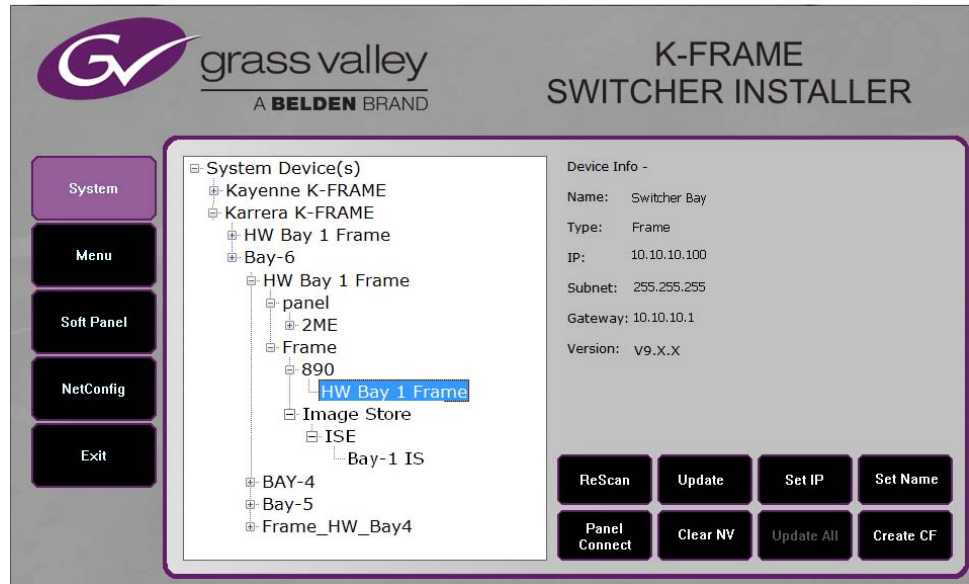
## Clear NV RAM for Control Panel and Frame

Use the following procedure on the Menu Panel or Menu on PC running the Menu Panel application that operates with the updated Video Processor Frame.

**Note** A new Menu Panel or PC that has not been used with the switcher system will need to be configured as a Control Surface Node before it can operate with a switcher system. See the *Karrera or Kayenne Installation and Service Manual* for specific instructions.

From the K-Frame Installer menu, touch the **System** button and touch the device to be cleared. Touch the **Clear NV** button. Repeat for Control Panel and Frame.

Figure 16. K-Frame Installer Program Clear NV



## Install .NET for First Time Menu on PC Installation

The Windows .NET Framework software is required for Menu on PC application operation, you can go to the PC's Add or Remove Programs to see what, if any .NET versions have already been installed. The Menu application requires at least .NET version 4.0 for XP or 4.5 for Windows 7 to operate and other third party software listed in the Third-party updates folder on the download site.

The .NET framework software is included on the K-Frame Software USB stick, and is also available on the Grass Valley website.

1. Insert the K-Frame Software USB stick into the PC's USB port.
2. Open the Third-party Updates folder, and in the **DotNet** folder run:
  - For Windows XP: dotNetFx40\_Full\_x86\_x64.exe, or
  - For Windows 7: dotNetFx45\_Full\_x86\_x64.exe file.

Files will be extracted to your PC and then the .NET Framework Setup application will run. Accept the license agreement and click **Install**.

3. When done, the message **Download complete. You can now disconnect from the Internet** will be displayed. Exit the .NET installer application and relaunch the K-Frame Installer Program.
4. You will now be able to install the Menu application onto the PC (see [Update/Install the Menu Panel Application on page 19](#)).
5. Add the PC's Name and IP Address with the Menu on PC software to the node list in the Eng Setup, Control Surfaces menu. For more information, see the *Kayenne or Karrera Installation & Service Manual*.

## Soft Panel Installation

Clicking on the **Soft Panel** button launches an individual installer for the KSP option. This installer is similar to the Menu Panel installer, and is intended for customer provided PC (not a Menu Panel). Follow the directions displayed to install KSP onto that PC. See the *KSP Switcher Soft Panel Graphical User Interface Instruction Manual* for more information.

Soft Panel requirements:

- The installed menu software matches the K-Frame system
- 1920 x1080 display resolution
- Microsoft .NET Framework 4.0 for XP/4.5 Windows 7 (see [Install .NET for First Time Menu on PC Installation](#)).
- Microsoft Visual Studio 2010. The file is named vcredist\_x86.exe and is included in the Third-party Updates\VisualStudio2010 folder.

Add the PC's Name and IP Address with the KSP software to the node list in the Eng Setup, Control Surfaces menu.

The KSP option is activated with a purchased license key.

## Install NetConfig and Newton Configurator (Optional)

Clicking on the **NetConfig** button launches an individual installer similar to the Menu Panel installer. Both NetConfig and the Newton Configurator plug-in will be installed. Follow the directions displayed to install these applications onto that Menu Panel or PC.

**Note** The K-Frame Installer Application and the separate NetConfig application cannot run simultaneously on the same Menu Panel or PC.



## Check Software Versions

Launch the Menu application. The Status Menu will list the switcher system devices. Ensure all the components are running the same software version. Mismatched versions will be reported with red text.

Figure 17. Mismatched Software Versions—K-Frame

The screenshot displays the 'KAYENNE K-FRAME VIDEO PRODUCTION CENTER' interface. A central table lists system components and their software versions. The 'KRR 2ME Menu' component is highlighted in red, indicating a mismatched version (V7.0.1) compared to other components (V9.0.0).

Node Name	Control Surface	Node Type	IP Address	Version	Date
Kayenne Frame		Video Proc Frame	192.168.0.170	V9.0.0	Jul 30 2015
ImageStore		Image Store	192.168.0.171	V9.0.0	Jul 30 2015
Kayenne	1A	Kayenne Panel	192.168.0.173	V9.0.0	Jul 30 2015
KYN 4ME Menu	1A	Menu Panel	192.168.0.175	V9.0.0	Jul 30 2015
Karrera	2A	Karrera Panel	192.168.0.177	V9.0.0	Jul 30 2015
KRR 2ME Menu	2A	Menu Panel	192.168.0.176	V7.0.1	Apr 13 2014
Clip Store		Clip Store	192.168.0.180	V9.0.0	Jul 30 2015

Additional interface elements include a 'Menu Version' box showing 'Ver V7.0.0', 'Memory Usage' at 15.5%, and various control buttons like 'Eng Login', 'SetDef MatchDef', 'Source Definition', 'Outputs', 'Ports & Devices', 'Switcher Tally', 'Router', 'ClipStore Config', 'Video Settings', 'Node Settings', 'Install Options', 'Test Patterns', 'Status', 'Save Load', 'Acquire Resources', 'User Setups', 'File Ops', 'E-MEM & Timeline', 'Macros', 'Source Ops', 'ME', 'Keyer', 'IDPM', 'Wipes', 'Copy Swap', 'Devices', 'Image Store', 'Router', and 'Eng Setup'.

## Confirm System Operation

1. Check that all the installed MEs are operational. Select different crosspoints on the Control Panel and fly a key with an iDPM.
2. Check that any software enabled options operate correctly. Existing authorization codes should work with the new software.
3. Check that EMEMs run properly. Older effects should work with the new software. If there are differences, however, you will need to edit or rebuild the effect with the new software version.
4. Reload the Macros and check that they operate correctly.
5. Load some Image Store images and confirm they display correctly.

## Backup New Configuration and Effects Files

1. When you are satisfied with system operation, save the new configuration files and effects as a Show file to a folder you've created on that version's K-Frame Software USB stick.
2. Label the media with the version and date and store it in a safe place.
3. Reactivate any virus protection on the Menu panel that may have been disabled at the start of this procedure.

This completes the standard switcher system software update procedure.

## Update Other Grass Valley Switcher Systems Software

More than one switcher system (multiple Video Processor Frames) may reside on your network. Each system can operate simultaneously with different software versions, as long as all the components in each system run the same software version.

Additional switcher systems are updated using the same procedure described before.

1. Select the other switcher system on the K-Frame Installer Program System hierarchy screen, and choose **Update All**.
2. Insert the K-Frame Software USB stick into each Menu Panel or PC associated with that switcher system and choose the **Menu** software update button.

## Individual Switcher System Component Update

Individual components can be selected for update (just the Video Processor Frame, optional Image Store, or just one Control Panel). However, all components of a switcher system must run the same software version. If updating components individually, make sure they all are at the same version before resuming K-Frame system operation.

**CAUTION** Allow the Video Processor Frame and optional Image Store to completely finish rebooting before attempting to install Control Panel software. The Control Panel update process requires the Frame to be operational.

## K-Frame Software Removal With Windows OS

K-Frame Deployment Tool versions and Menu Panel programs can be removed using standard Windows techniques (Setup/Add or Remove Programs/Uninstall or Change Programs, etc.).

## Deployment Archive Files

When new software versions are installed with the K-Frame Deployment tool, older version deployment files are not automatically removed. Each K-Frame deployment creates its own software version folder. If the default installation location, or the same alternative destination, is always chosen, all the version folders will be listed together.

Default destinations:

- C:\Program Files (x86)\ Grass Valley \ GV Switcher \ K\_Frame\_Switcher\_VX.X for 64-bit
- C:\Program Files\ Grass Valley \ GV Switcher \ K\_Frame\_Switcher\_VX.X for 32-bit systems.

Running the K\_FrameInstaller.exe file in any version's folder will permit installation of that version's files.

**CAUTION** Before installing an older version of the Menu Panel application, you must first un-install the newer, currently installed Menu Panel version, either using that newer version's K-Frame Deploy Tool or Windows Add/Remove Programs.

**Note** All the components of a switcher system must run the same software version. If you want to return to an earlier version of software, you should back-down the software on the Video Processor Frame, all Control Panels, and all Menu Panel applications used with that switcher system.

## Calibrate the Lever Arm and Joystick

See the *K-Frame Kayenne/Karrera/GV Korona* Installation Service Manual, in the Maintenance section.

## K-Frame System Default IP Addresses

K-Frame systems are shipped with default IP addresses. These default addresses can be used if the K-Frame system is operating on a dedicated network with no other devices present. Note that these addresses can be changed during installation, and so your system may not be using these defaults.

Table 1. *Kayenne/Karrera K-Frame System Default IP Addresses*

Device	IP Address
Video Processor Frame CPU	192.168.0.170
Image Store CPU	192.168.0.171

Table 1. Kayenne/Karrera K-Frame System Default IP Addresses

Device	IP Address
Control Panel Surface 1A	192.168.0.173
Touch Screen Menu Panel 1	192.168.0.175
Touch Screen Menu Panel 2	192.168.0.176
Control Panel Surface 1B	192.168.0.177
Control Panel Surface 2A	192.168.0.178
Control Panel Surface 2B	192.168.0.179
ClipStore Server	192.168.0.180
32-Crosspoint Remote Aux Panels V1.6.5 and higher software: (hard reset with the front panel buttons)	IP Address: 192.168.1.2 Frame IP: 192.168.1.1 Gateway IP: 192.168.1.1 Subnet Mask 255.255.255.0  <b>Note</b> 32-Crosspoint Remote Aux Panel default settings must be changed to operate with a Karrera system whose other components are configured with their default IP addresses.
All Subnet Masks)	255.255.255.0
All Gateways (except V1.6.5 software Remote Aux panel)	192.168.0.1
<b>Reserved For Future Use</b>	<b>CAUTION</b> Do not connect any devices configured with the following IP addresses to a Karrera network.
Video Processor Frame Gigabit Ethernet	<b>192.168.0.172</b>
PCU Panel Reserved LAN Port	<b>192.168.0.174</b>

**Note** Customer orders with multiple Control Panels will be pre-configured to the listed IP addresses. However, if one of these additional Control Panels is reset to factory defaults, it will be given the standard 1A default 192.168.0.173 address.

## IP Addresses and Single Control Surface Systems

A new Grass Valley system will operate on an isolated network with the default IP addresses configured at the factory (except for 32 Crosspoint Remote Aux panels). However, if you wish to integrate the system into an existing network, wish to use gateway communications, or wish to add more control surface components, then the IP addresses may need to be changed.

## IP Addresses and Multiple Control Surfaces and Suites

If you plan to use multiple control surfaces (for example, more than one Control Panel or more than one Menu Panel) with the same Video Processor frame, you must make sure the IP addresses of the additional items are unique before connecting them to the network. Using default IP addresses will cause network conflicts and unpredictable system operation.

See the *K-Frame Kayenne/Karrera/GV Korona Installation Service Manual* for network configuration information.

