

# Zodiak

DIGITAL PRODUCTION SWITCHER

## Release Notes



● → SOFTWARE VERSION 4.0

071812709  
NOVEMBER 2004

*the most watched worldwide*

# Contacting Grass Valley

Region	Voice	Fax	Address	Web Site
North America	(800) 547-8949 Support: 530-478-4148	Sales: (530) 478-3347 Support: (530) 478-3181	Grass Valley P.O. Box 599000 Nevada City, CA 95959-7900 USA	www.thomsongrassvalley.com
Pacific Operations	+852-2585-6688 Support: 852-2585-6579	+852-2802-2996		
U.K., Asia, Middle East	+44 1753 218 777	+44 1753 218 757		
France	+33 1 45 29 73 00			
Germany, Europe	+49 6150 104 782	+49 6150 104 223		

Copyright © Thomson Broadcast and Media Solutions All rights reserved.

## Grass Valley Web Site

The [www.thomsongrassvalley.com](http://www.thomsongrassvalley.com) web site offers the following:

**Online User Documentation** — Current versions of product catalogs, brochures, data sheets, ordering guides, planning guides, manuals, and release notes in .pdf format can be downloaded.

**FAQ Database** — Solutions to problems and troubleshooting efforts can be found by searching our Frequently Asked Questions (FAQ) database.

**Software Downloads** — Software updates, drivers, and patches can be downloaded.

# Contents

- Zodiak Release Notes** ..... 5
  - Introduction ..... 5
    - New Features in Release 4.0 ..... 5
    - Changes in Release 4.0 ..... 6
    - Additional Information ..... 6
      - FTP Software Compatibility Issues ..... 6
  - Glow and Defocus ..... 7
    - Glow and Defocus Menus ..... 7
      - Glow Menu ..... 7
      - Defocus Menu ..... 9
      - Keyer Menu Defocus Mask ..... 11
  - Router Destination Selection Menu ..... 12
  - External Device Time Code Selection ..... 13
  - Effects Send Menu ..... 15
  - Menu on PC Knobs ..... 16
  - Frame Software Diagnostics Tools ..... 17
    - Diagnostics Data File Transfer ..... 17
    - Diagnostics Data Collection ..... 18
  - Zodiak 4.0 Update ..... 19
    - Hardware Notes and Requirements ..... 19
      - Mix Effect Module Heat Sinks ..... 19
      - Control Processor SBC1000 Submodule ..... 19
      - Dual Mix Effects Module Fuse Upgrade ..... 20
  - Installing Zodiak System Software ..... 20
    - Update Software with Zodiak Software Update Tool ..... 21
      - Install Zodiak System Software ..... 21
      - Install Still Store Loader ..... 28
  - Verify Switcher Operation ..... 30
  - Verify or Set Date and Time of System Components ..... 31
    - Verify or Set Menu Panel Date and Time ..... 31
    - Verify or Set Video Processor Date and Time ..... 32
    - Verify or Set Main Panel Date and Time ..... 33
  - Other Zodiak Update Information ..... 34
    - Drain NV RAM Procedure ..... 34
    - Zodiak System Default IP Addresses ..... 37



# Zodiak Release Notes

## Introduction

This document describes installation and other information specific to Zodiak Digital Production Switcher Release 4.0 software.

**WARNING** Make sure that required heat sinks have been added to the Mix Effects module(s) in the Zodiak Video Frame before you install this version of Zodiak software. Your hardware must be modified before software installation or the Mix Effects module(s) will overheat.

**CAUTION** Zodiak 3.x and higher software requires an SBC1000 Frame Processor upgrade for optimum performance on 3 M/E systems. The SBC1000 sub-module requires 2.2 or later software. You must install compatible software BEFORE you install the SBC1000.

**CAUTION** Five amp replacement fuses must be installed in the Zodiak Dual Mix Effects module 671634700 before you install the 3.x or higher software. See [page 20](#) for specific Zodiak system update instructions.

## New Features in Release 4.0

- Defocus/Glow (see [page 7](#)).
- Router Destination selection menu (see [page 12](#)).
- External Device Time Code Selection (see [page 13](#)).
- Effects Send Menu (see [page 15](#))
- Menu on PC Knobs (see [page 16](#)).
- Frame Software Diagnostic Tools (see [page 17](#)).
- Disk Space Status (**Available** and **Capacity**) is now reported on the Zodiak Frame Web Browser page.

- 32-Crosspoint Remote Aux Panel Software Update is available for download from the Thomson Grass Valley website. Refer to the separate Remote Aux Panel Update Instructions supplied with the package for specific information.

## Changes in Release 4.0

- The **Dsk Link** (Downstream Key Link) feature now dissolves linked downstream keyers, instead of cutting them on and off. The behavior of Dsk Link has also changed to correct a design incompatibility. The current Dsk Link state is no longer saved as part of an E-MEM effect. To use Downstream Key Link with effects, activate the **Dsk Link** Main panel button before recalling the effect.

## Additional Information

### FTP Software Compatibility Issues

The FTP server built into the Zodiac system is tested with the Microsoft Internet Explorer browser and the Microsoft FTP utilities. These are the recommended programs to use for FTP with Zodiac systems.

Some browsers and FTP utilities are not compatible with the Zodiac frame FTP software. These browsers do not recognize the Phar Lap Real-Time Operating System FTP server used by Zodiac systems, and do not follow the established standard of performing binary transfers when communicating with an unrecognized FTP server. If your browser or FTP program does not work with a Zodiac system, use the programs recommended above instead, or contact the maker of that browser or FTP program to request a fix.

# Glow and Defocus

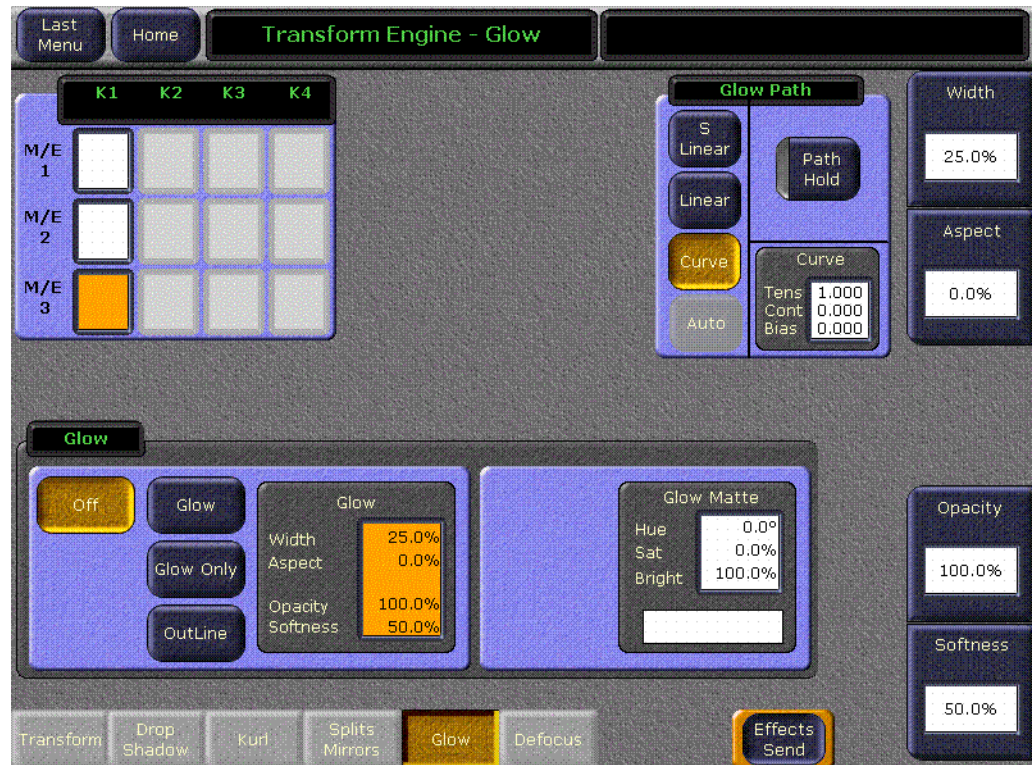
Two image processing features have been added with this Zodiac release. Glow adds a soft edged variable opacity border around keys, leaving the original keyed image unmodified, and is a standard feature available on all Zodiac systems. Defocus blurs the actual keyed image, and is available with the Transform Engine option.

## Glow and Defocus Menus

### Glow Menu

Glow controls are available on the Transform Engine Glow menu, accessed via **Transform, Glow** (Figure 1). You must turn Effects Send on for each keyer on you wish to use the glow feature (touch the **Effects Send** button, then touch the desired keyers). The Glow controls on the menu affect the delegated keyer. Only one keyer can be delegated at a time (Figure 1).

Figure 1. Glow Menu





### Glow Pane

**Off** — The Glow effect is deactivated.

**Glow** — The Glow effect is applied around the keyed image which remains visible.

**Glow Only** — The glow effect is applied to the entire keyed area, replacing the original keyed image. Only the glow is shown.

**Outline** — The glow effect is shown around the keyed area, but the original keyed image is not shown. Only the border area of the glow is visible.

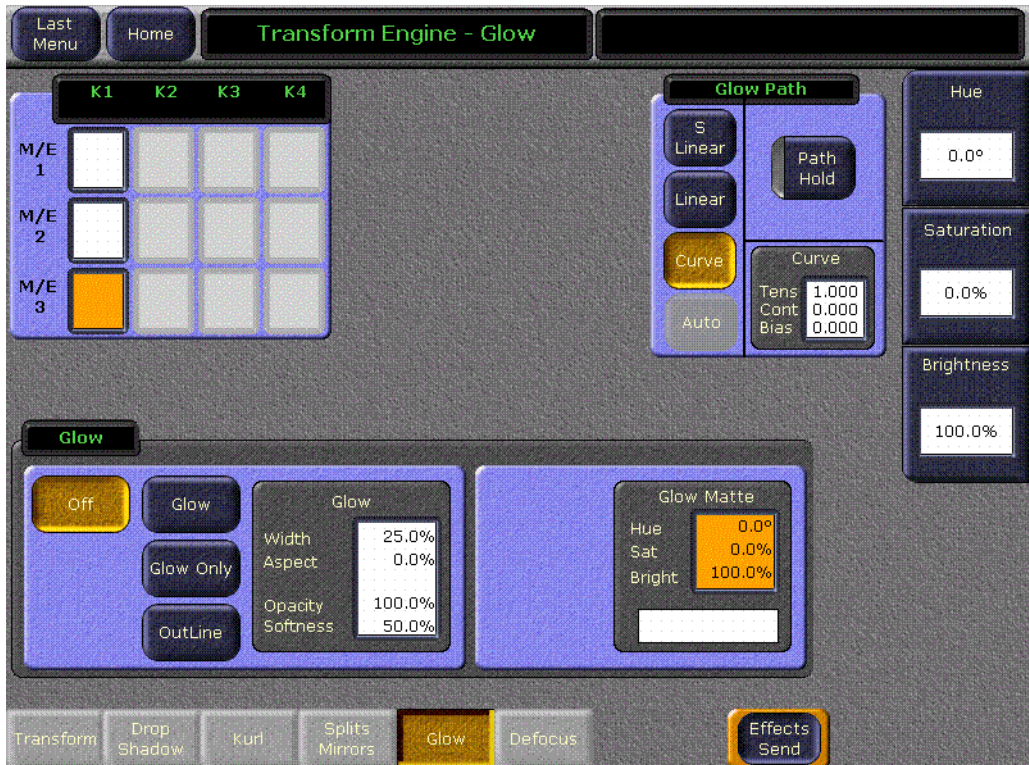
When the Glow pane is activated, knob controls for Glow **Width**, **Aspect**, **Opacity**, and **Softness** are available.

**Note** The Glow Softness parameter value is shared with Drop Shadow Softness. Adjusting either Glow or Drop Shadow Softness will affect both Glow and Drop Shadow Softness.

### Glow Matte Pane

When the Glow matte pane is activated, knob controls for matte **Hue**, **Saturation**, and **Brightness** become available. An approximation of the color of the matte is shown at the bottom of the pane (Figure 2).

Figure 2. Glow Menu, Matte Controls Activated





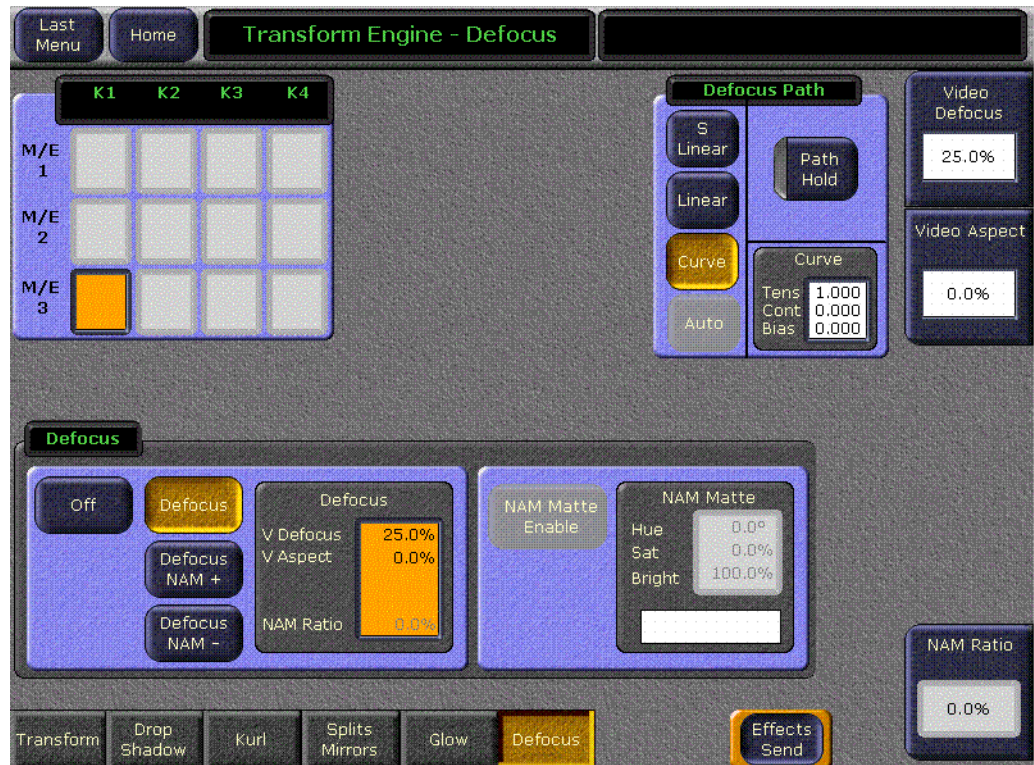
## Glow Path Pane

Controls for glow path, using the standard **Hold**, **S Linear**, **Linear**, and **Curve** parameters, are applied when the Glow feature is activated.

## Defocus Menu

Defocus controls are available on the Transform Engine Glow menu, accessed via **Transform, Defocus** (Figure 3). This menu is only available when a Transform Engine option has been installed.

Figure 3. Defocus Menu



## Defocus Pane

**Off** — The Defocus effect is deactivated.

**Defocus** — The Defocus effect is applied to the original keyed image.

**Defocus NAM +** — The defocused image is compared to the original image on a pixel by pixel basis, and the lighter (higher luminance) pixel of the two is used in the final image.

**Defocus NAM -** — The defocused image is compared to the original image on a pixel by pixel basis, and the darker (lower luminance) pixel of the two is used in the final image.

When the Defocus pane is activated, knob controls for **Video Defocus**, **Video Aspect**, and **NAM Ratio** are available.

**Video Defocus** — Adjusts the total amount of defocus applied to the image.

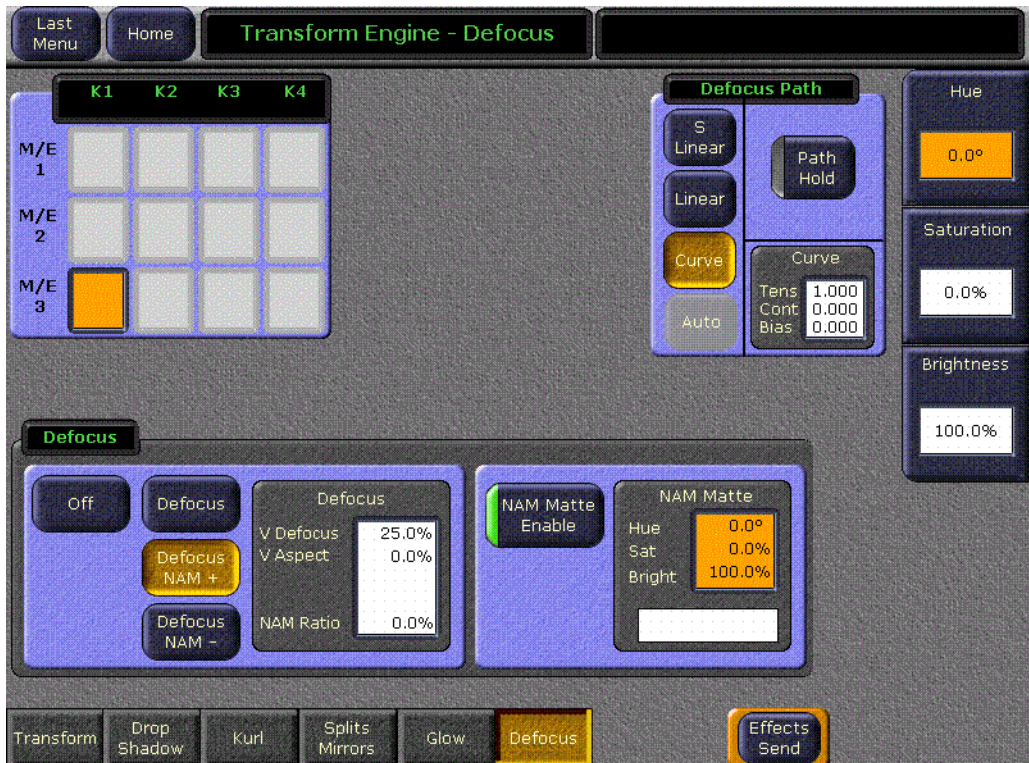
**Video Aspect** — Adjusts the percentage of defocus applied to the vertical and horizontal axes of the image.

**NAM Ratio** — Adjusts the level of luminance at which the Defocus effect will be applied to NAM pixels. This value applies to both NAM + and NAM - modes.

### NAM Matte Pane

**NAM Matte Enable** — When selected a matte color is applied to the selected NAM (lighter or darker) portion of the keyed image (Figure 4).

Figure 4. Defocus Menu, NAM Matte Activated

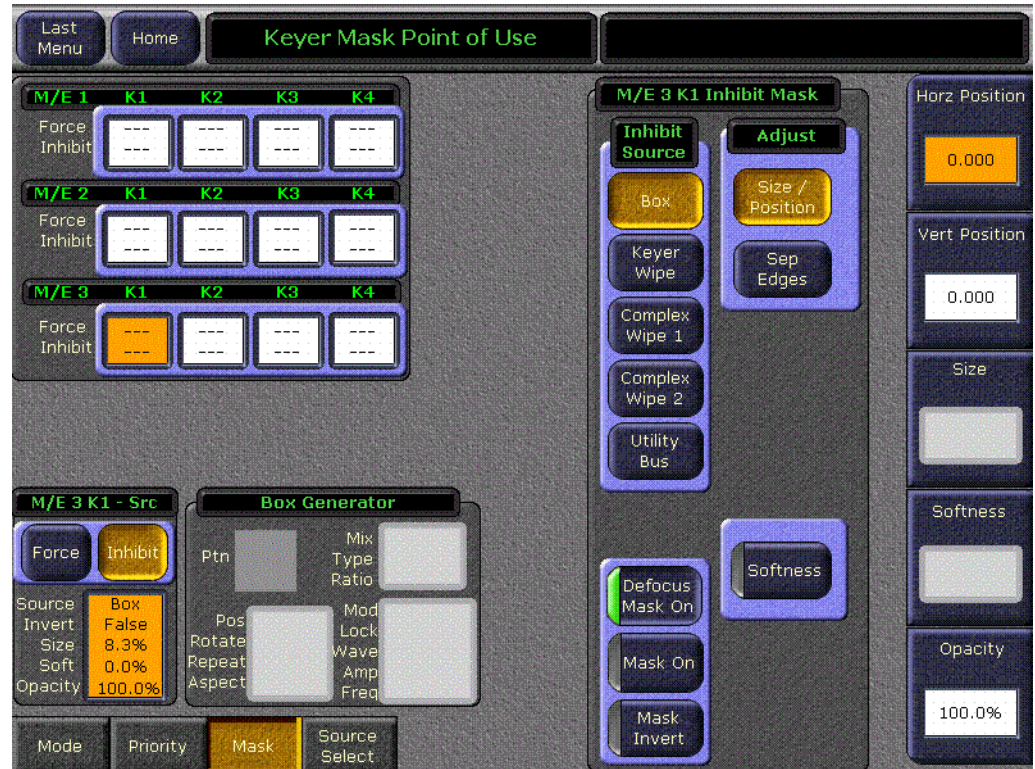


When the NAM Matte pane is activated, knob controls for matte **Hue**, **Saturation**, and **Brightness** become available. An approximation of the color of the matte is shown at the bottom of the pane.

## Keyer Menu Defocus Mask

A **Defocus Mask On** button has been added to the Keyer Mask menu. This feature is available when the delegated keyer has Defocus turned on and an **Inhibit** mask has been selected (Figure 5).

Figure 5. Keyer Mask Menu, Defocus Mask On



When on, the Defocus effect can be masked so it is applied to only a portion of the image.

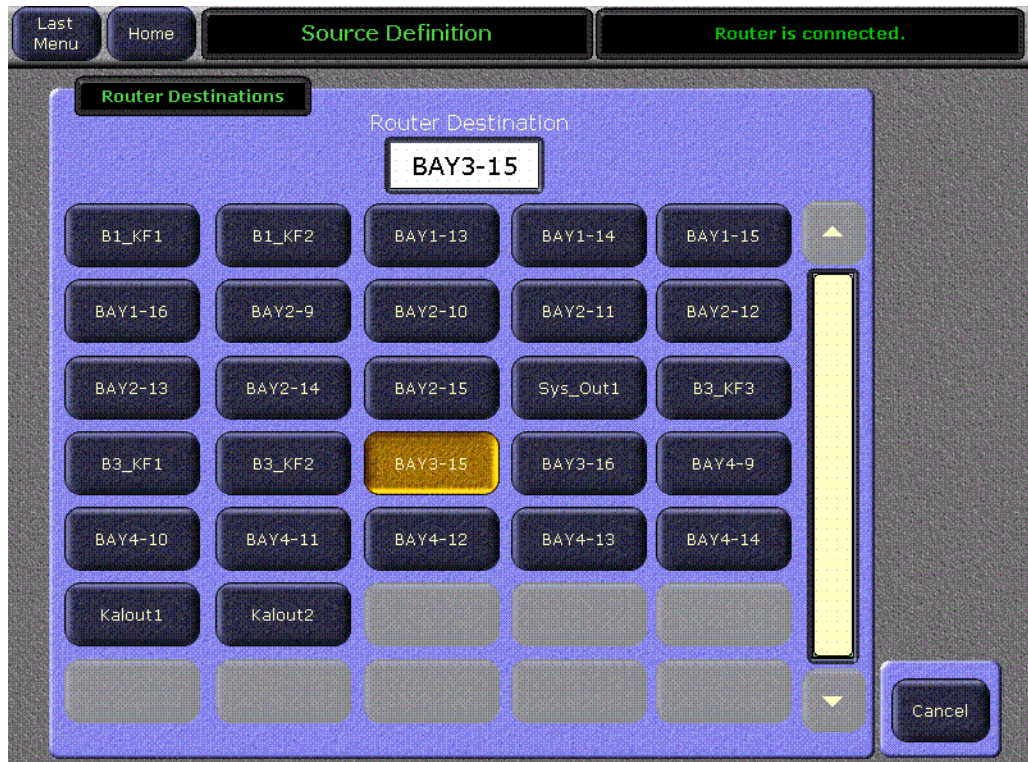
Defocus is not available with a **Force** mask.



## Router Destination Selection Menu

On Zodiac systems configured to operate with an external router, you can now select router destinations for Zodiac sources from a menu. In the Eng Setup Source Definition menu, when choosing a source with a **Router** source type assigned, touching the **Destination** data pad takes you to a menu similar to Figure 6.

Figure 6. Router Destination Selection Menu



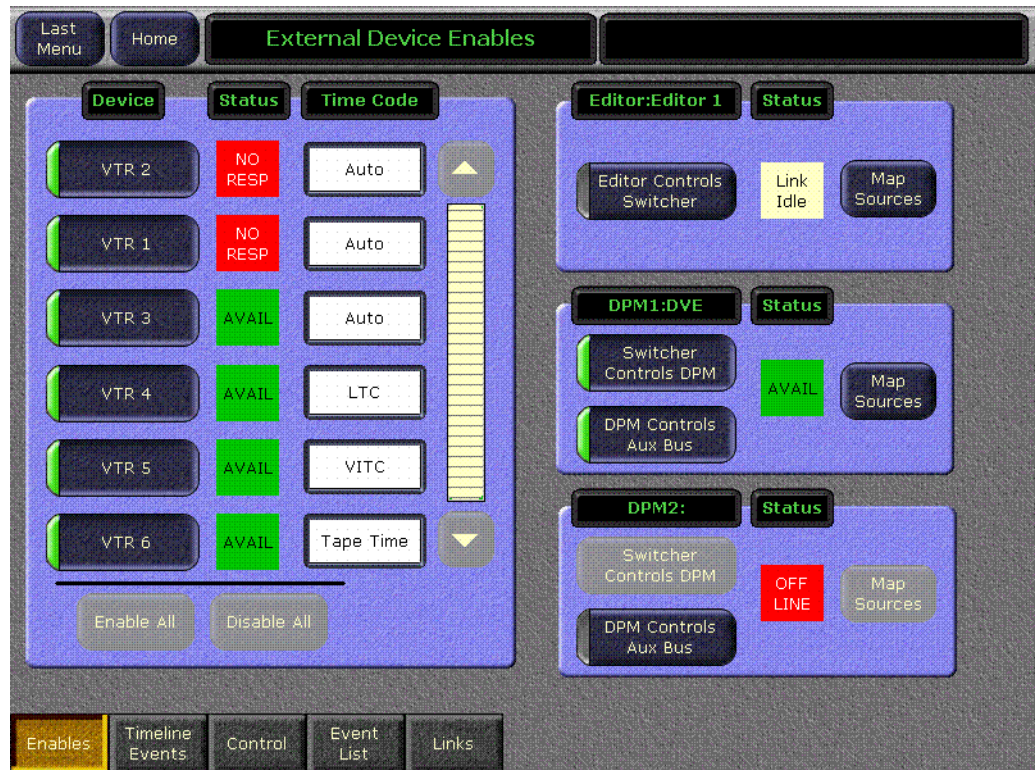
The Zodiac Video Processor frame receives a list of destinations from the router and displays them on this menu. Touching the button for the desired destination assigns it to the previously selected Zodiac router source.

Router destination names can still be entered manually. Touching the **Router Destination** data pad at the top of this menu opens an alphanumeric keypad.

# External Device Time Code Selection

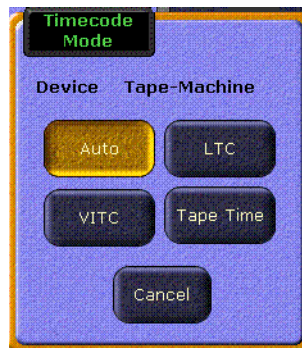
On the External Device Enables menu you can specify what type of time-code the Zodiak system will use with each device. It is assumed the controlled external device is operating with the same time code type as selected. The current time code mode is displayed in the Time Code column (Figure 7).

Figure 7. External Device Enables Menu



Touching the **Time Code** data pad for a device opens a Timecode Mode window (Figure 8).

Figure 8. Time Code Mode Selection Window



**Auto** — The controlled device returns the best source of timecode available. At speeds less than 0.25 play Longitudinal Time Code (LTC) will be used if it can be read. At these slow speeds if LTC is not found but Vertical Interval Time Code (VITC) is available, VITC will be used. At speeds greater than 0.25 play, VITC will be used if it can be read. At these higher speeds if VITC is not found but LTC is available, LTC will be used. At any speed, if neither LTC or VITC is readable, Corrected LTC will be used, which is the last good LTC time corrected by the tape timer.

**LTC** — Longitudinal Time Code will be used.

**VITC** — Vertical Interval Time Code will be used.

**Tape Time** — The current zero based tape time setting of the controlled device will be used.

Selecting a timecode mode assigns that setting to the device and closes the pane.

## Effects Send Menu

The Effects Send menu is accessible from the M/E and Transform Engine Menus by touching the **Effects Send** button (Figure 9).

Figure 9. Effects Send Menu



The buttons on this menu activate the **Int DPM** Effects Send loop on each keyer of each M/E. This menu allows you to turn the Effects Send loop on and off without having to first delegate that keyer on the Main panel.

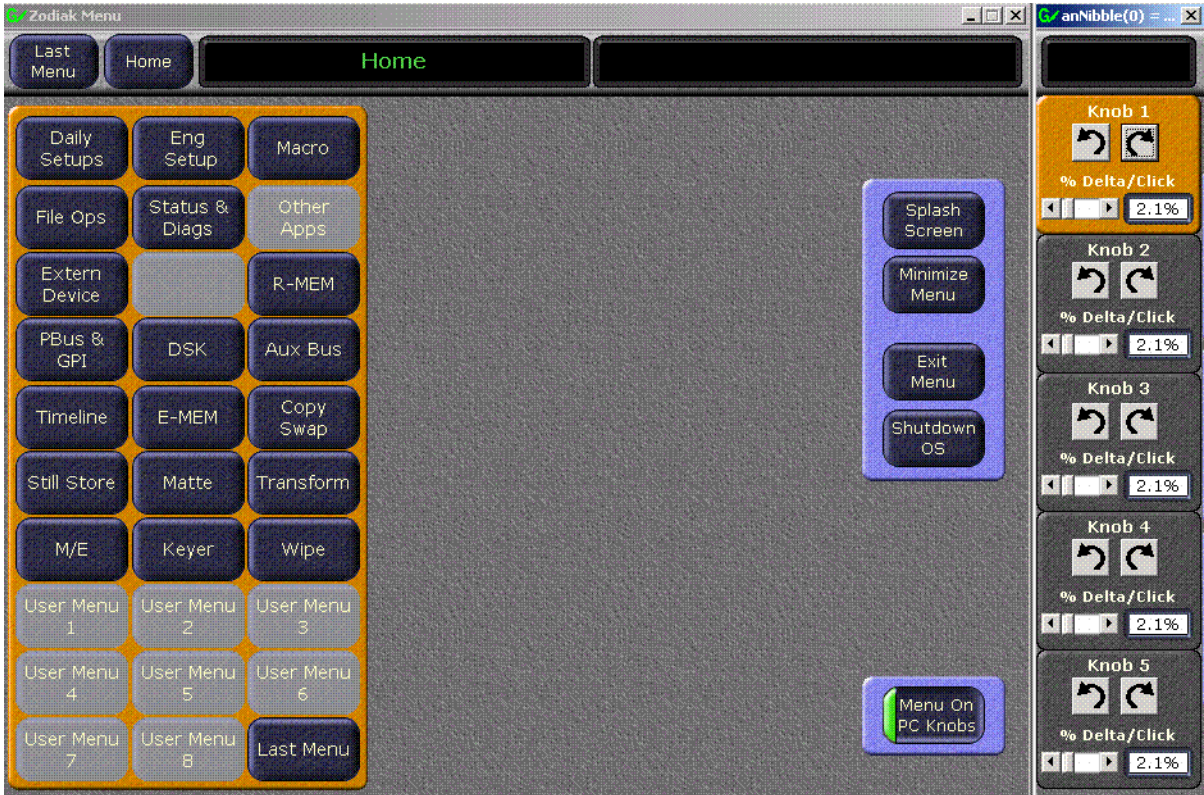
Activating Effects Send is also a necessary precursor to using the Glow feature, which is standard on Zodiac systems.



# Menu on PC Knobs

Knob controls are now available to users of the Menu on PC application. From the Home menu, touch the **Menu on PC Knobs** button to display the controls (Figure 10).

Figure 10. Menu on PC Knob Controls



Clicking on the clockwise and counterclockwise arrows changes the associated knob value. The % **Delta/Click** slider control changes how much the knob value changes per click. Other parameters (like menu item selections) are not affected by the delta control.

# Frame Software Diagnostics Tools

## Diagnostics Data File Transfer

A **Grab SW Diag Data** button has been added to the Status and Diagnostics menu. This button provides a convenient method to save the current configuration files (Eng Setup, User Prefs, Suite Prefs), E-MEM, Macro, and also any frame software diagnostics data files that may exist (see Diagnostic Data Collection below). If you need to contact Grass Valley for assistance about any software problems, the engineering team will need these files for efficient troubleshooting.

Figure 11. Status - Versions Menu



Pressing the **Grab SW Diag Data** button opens a file browser window. After selecting the destination for the files, pressing the **Save SW Diag Data** button on this browser menu initiates the file copy process. The time required to transfer the files varies depending on the amount of data being saved, and may take a couple minutes. The Zodiac Main panel can be operated during the file transfer process. However, it is recommended not to exit from the browser menu while the files are being copied. A SW Diag Data directory will be created for the files. If a directory of that name already exists at that destination, it will be overwritten. After the files have been copied, the

entire contents of the directory should be compressed into a .zip archive. Grass Valley Customer Service can provide instructions on how to send this information to the engineering team for analysis.

## Diagnostics Data Collection

Zodiak systems incorporate internal code that gathers information should software problems occur. If the Video Processor frame crashes, extensive data detailing the current state of the frame software is automatically logged onto the frame hard drive. This data can help the Grass Valley engineering team quickly address the problem. The information is retained indefinitely, but is overwritten should another frame crash occur.

Zodiak systems running version 4.0 or later software have an additional internal diagnostic tool available that can force the logging of the state of the frame software at any time. To accomplish this, the frame software must be halted and a frame reset will be required to resume system operation.

**CAUTION** The Diagnostics Data Collection tool should only be used under the guidance of Grass Valley Customer Service or the Zodiak engineering team.

The tool is activated by turning the Zodiak Video Processor frame COM Boot Dial switch to **6** (six) and leaving it there for more than one second. Do not reset the processor at this time. The processor will halt and the status LEDs on the module will count in binary as the diagnostic information is written to the frame hard drive. When all of the data is recorded (about 30 seconds), the counting stops and all the frame's CPU status LEDs will illuminate. The COM boot dial switch should then be set back to **0** (zero) and the frame reset. The Zodiak system will then return to normal operation.

# Zodiak 4.0 Update

## Hardware Notes and Requirements

### Mix Effect Module Heat Sinks

Before installing this version of Zodiak software, make sure that required heat sinks were added to the Mix Effects module(s) in the Zodiak Video Frame. The heat sinks and instructions were provided with each version 2.1 software CD shipped.

In a 2.5-M/E Zodiak system, there is one Dual Mix Effects module in slot 2 of the Video Frame requiring 8 heat sinks. In a 3-M/E system there is a Dual Mix Effects module in slot 2 (8 heat sinks) and a single Mix Effects module in slot 3 (4 heat sinks). Each FMN kit will include enough heat sinks for a 3-M/E system.

**WARNING** Your hardware must be modified before software installation or the Mix Effects module(s) will overheat. The ICs on this module may be quite hot when the module is first removed from the frame. Let the module cool before proceeding.

Refer to Field Modification Note (FMN) 075-0693-00 for specific heat sink installation instructions.

### Control Processor SBC1000 Submodule

A new SBC1000 (single board computer) submodule is now installed on Zodiak Frame Control Processor modules shipping from the factory (part number 671-6346-02).

**CAUTION** Zodiak 3.0 software requires an SBC1000 Frame Processor upgrade for optimum performance on 3 M/E systems. The SBC1000 submodule requires 2.2 or later software, for proper boot kernel file. You must install compatible software BEFORE you install the SBC1000. Once installed, if you wish to back down to 2.1 or earlier software you will need to reinstall the earlier Frame processor before you load the older software.

Zodiak 3 M/E systems need additional computing power to support some advanced features. While 4.0 software will run on the earlier slower frame processors, some complex effects may not run smoothly. The processing time required for complicated effects may exceed the time available within a frame, and so frames could occasionally be skipped. Installing the

SBC1000 processor upgrade will prevent this from occurring. Note that Zodiac systems running at 50 Hz have longer field times, and so are less likely to be adversely affected if they use an earlier Frame processor.

1. If you have not already received an SBC1000 processor for your 3 M/E system by prior arrangement, contact Grass Valley Customer Service for ordering information.
2. After the 4.0 software has been installed, remove the existing Video Processor frame Control Processor submodule and replace it with the SBC1000 submodule. Refer to the Field Modification Note (FMN) document supplied with your SBC1000 processor for specific hardware installation procedures.

### **Check Zodiac System Operation**

After the processor upgrade, confirm that the Zodiac system operates properly before you continue.

### **Dual Mix Effects Module Fuse Upgrade**

Additional power consumption by newer software can cause the 3 amp fuses on the Dual Mix Effects module 671634700 to blow. A Field Modification Kit should have been sent to all Zodiac users that contains 5 amp replacement fuses. These fuses must be installed before you upgrade the Zodiac software. Contact Customer Service if you did not receive the FMN kit. Refer to FMN 075075800 for specific instructions.

## **Installing Zodiac System Software**

Perform the Zodiac software update in the following order:

1. Back-up all system configuration and E-MEM files to the Zip disk.
2. Verify that the heat sinks are installed on the Mix Effects module(s).
3. Update Zodiac system software with Software Update Tool.

**Note** If updating from earlier software, prompts for updating the frame kernel will appear.

4. Install Still Store Loader application with Software Update Tool (optional).
5. Verify correct switcher operation after update. If this is an upgrade from a version earlier than 2.2, reconfigure existing Serial and CPL ports and devices with new Ports & Devices menu.
6. Verify date and time settings on the Menu panel, Video Frame, and Main panel.



7. Drain NV RAM (optional).
8. Perform Lever Arm and Joystick Calibration, refer to the *Zodiac Installation and Service Manual*.
9. Reload saved configuration.

## Update Software with Zodiac Software Update Tool

The Zodiac Software Update Tool installs various software elements to Zodiac system devices. The Update Tool and all the associated software is provided on the Zodiac Software CD. The Update Tool installs on the Menu panel and creates backup copies of the current and previous versions of software.

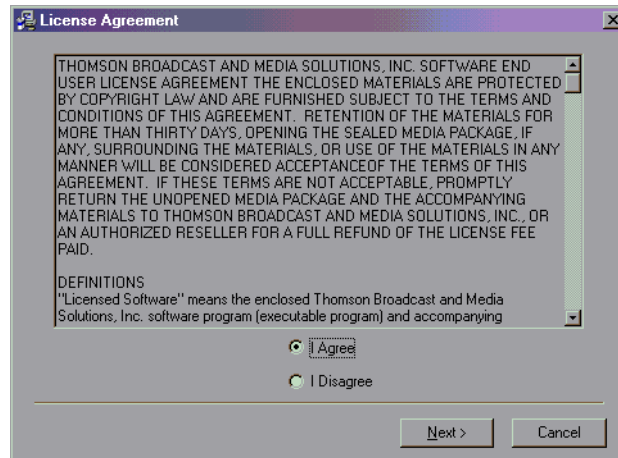
A mouse and PC computer keyboard are useful for a standard software installation. However, if IP addresses are to be changed from their defaults, mouse and keyboard are required.

## Install Zodiac System Software

1. If you have not already done so, save your system configuration files and E-MEM registers to Zip disk and store it in a safe place. You will need these files if you decide to return to the earlier software version or if you perform the Drain NV RAM procedure.
2. Check that the rotary Boot switches on both the Video frame ([Figure 20 on page 26](#)) and the Main panel ([Figure 21 on page 27](#)) are set to **0**.  
The normal operating position is **0** on both.
3. Exit the currently running Zodiac Menu by touching the **Home** button, then the **Exit Menu** button on the Home menu. Exit any other running applications on the Windows Toolbar (including Still Store Loader, etc.).
4. Insert the Zodiac Software CD into the CD-ROM drive on the right side of the Zodiac Menu panel. The Zodiac installation program will automatically launch.

5. A license agreement screen will appear (Figure 12).

Figure 12. Grass Valley License Agreement



6. Agree to the terms and touch **Next >**.

**Note** If a Internet Explorer Installation box appears, touch OK. The upgrade of Explorer is not necessary for the Software Update but is recommended. Internet Explorer is available from Microsoft.

Figure 13. Internet Explorer



The Zodiac Installation screen appears (Figure 14) with the following options.

- Zodiac Application Software — Used for installing software on actual Zodiac system hardware.
- Menu on PC — Installs only the Zodiac Menu application on a PC or an additional Menu panel, which when networked with the Zodiac system provides an additional control point.
- Still Store Loader — Installs the Still Store Loader utility program on the system where the CD is currently mounted, either a PC or the Zodiac Menu panel.
- NetCentral Agent Configuration Tool — Used to install the NetCentral Agent, required for the NetCentral option, on a Zodiac system. Available only when SNMP is configured.

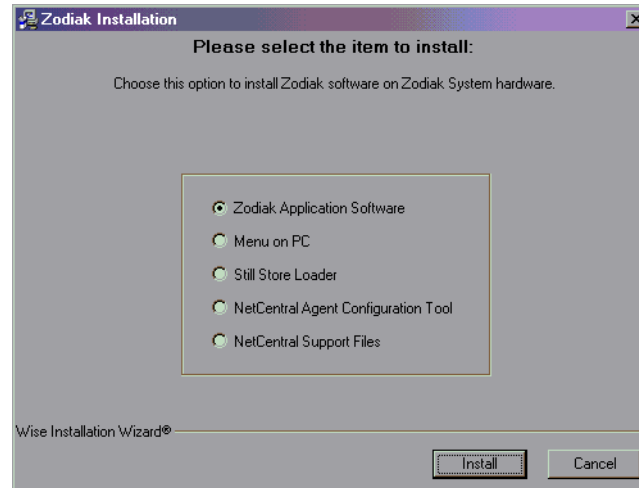


- NetCentral Support Files — Installs NetCentral support files for Zodiak monitoring on a NetCentral Monitoring Station. SNMP and NetCentral must be installed on the NetCentral Monitoring Station before you install these files.

Only one option can be selected at a time.

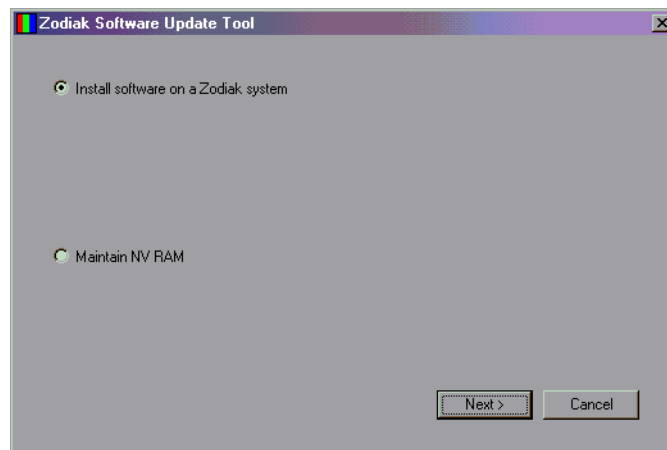
7. Select the **Zodiak Application Software** button and then touch the **Install** button.

Figure 14. Zodiak Application Software Selected



8. Select the **Install Software on a Zodiak system radio** button and then touch the **Next >** button.

Figure 15. Zodiak Application Software Selected

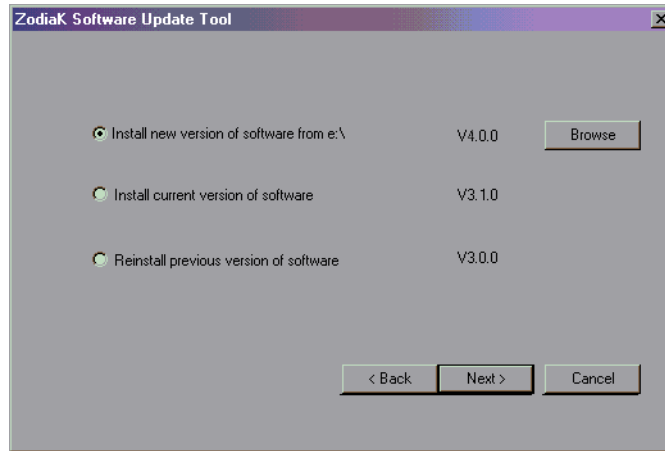


The following three options are available. Only one can be selected at a time.

- **Install new version of software** — Select this option if you are updating your system software. It installs new software from the inserted CD. The **Browse** button is intended for software installation over the network, if the CD disk is not available.
- **Install current version of software** — Re-installs the currently loaded version of software from Menu Panel hard drive. This is generally used to install the current software on new Zodiac hardware attached to the system.
- **Reinstall previous version of software** — Installs the previously loaded software from the Menu Panel hard drive.

9. Select **Install new version of software** option then touch the **Next>** button.

Figure 16. Install New Version of Software Selected

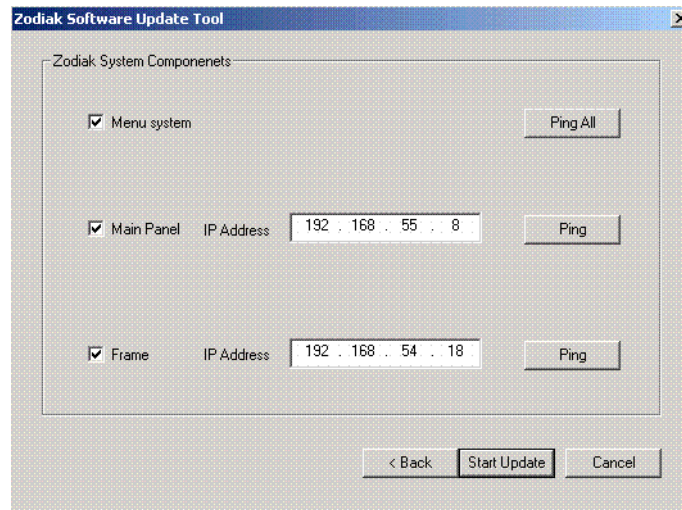


The following Zodiac system component installation options are available. Only the software of the selected targets will be affected.

- **Menu System** — Installs the Zodiac menu application software onto the Menu panel hard disk.
- **Main Panel** — Installs software to the Zodiac Main panel.
- **Frame** — Installs software to the Video Frame.

**Note** Typically check all boxes when installing a new software version.

Figure 17. Zodiac Software Install Screen 2



10. Touch the **Ping All** button on the upper right, after checking the boxes of all the devices you wish to install. Valid IP addresses are required. The previously used IP addresses are displayed by default.

- If communications succeeds, an **All selected targets Pinged ok** message will appear.
- If a device fails to respond, that device will be identified with a **No reply to Ping** message. The device might be disconnected from the network, be unpowered, or the IP address may be incorrect. If necessary, change the IP addresses on the screen using a standard computer keyboard and mouse connected to the ports on the rear of the Menu panel as described in Section 3 – Configuration of the Zodiac Installation and Service manual. You can test whether a single device is communicating with its individual **Ping** button.

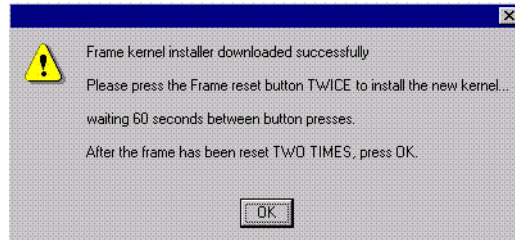
**Note** All selected devices should Ping successfully before proceeding. If Ping for a selected device fails, continuing installation will make the Update Tool exit.

11. When the installation option selections and IP addresses are correct, touch the **Start Update** button.

If you are updating from a version earlier than 2.2 a kernel update screen will display informing you that the kernel must be replaced. Press **OK** to continue.

Once the new software kernel is downloaded successfully, a screen similar to [Figure 18](#) will prompt you to reset the frame at 60 second intervals.

Figure 18. Kernel Update Reset Message



**CAUTION** Follow the instructions to reset the Frame Control Processor twice, waiting the specified time (60 seconds) between resets (see Figure 20 on page 26 for Reset button location). When done, touch **OK** on the Reset screen.

The installer will return to the Zodiac Software Install screen (Figure 17 on page 25). The kernel is now updated but the software has not been loaded. Select the **Start Update** button to complete the update.

During software installation, a Zodiac Download Status screen appears and installation begins. A progress bar is displayed and the components being loaded are identified.

**Note** If a **Locked .dll** error message appears select **ignore**.

12. When the file transfers are complete, a screen similar to Figure 19 appears. Touch **OK**. The Menu panel automatically resets itself, but you must manually reset the other hardware components you updated (Figure 20 and Figure 21).

Figure 19. Zodiac Hardware Install Reset Prompt

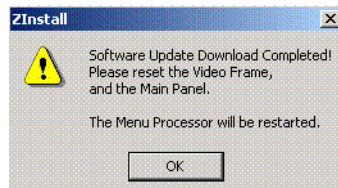


Figure 20. Frame Reset Button

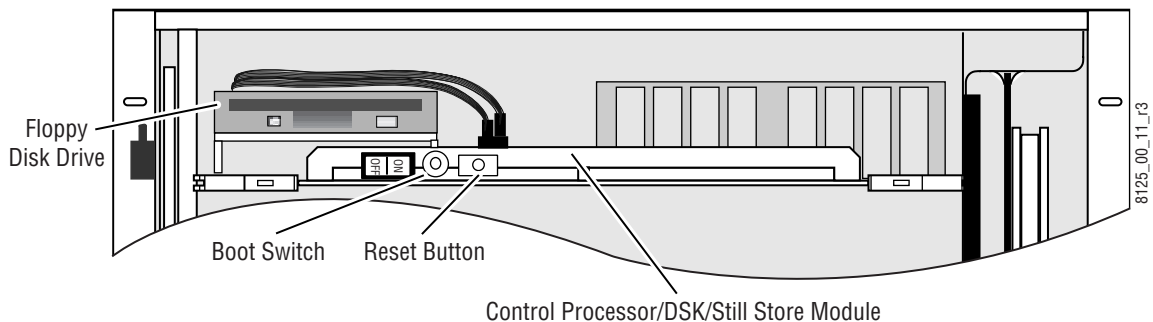
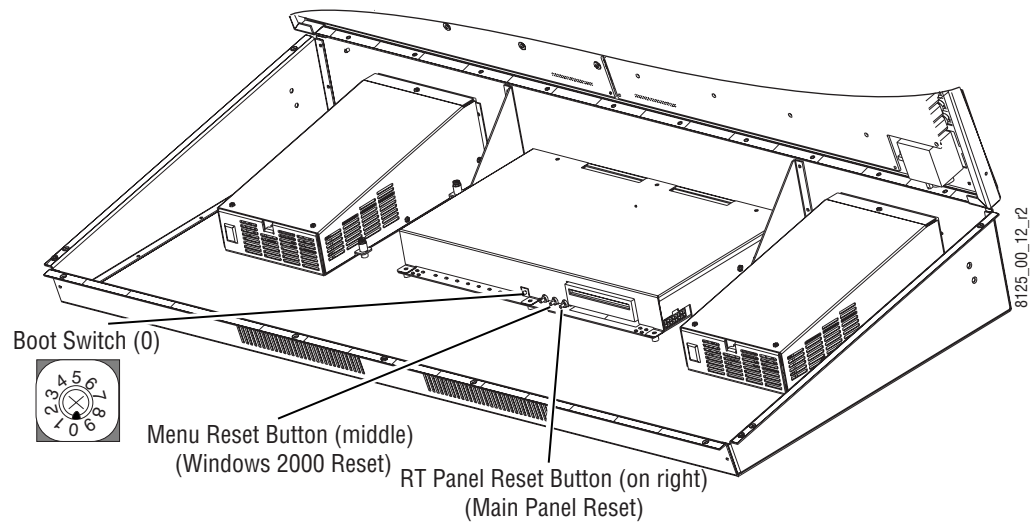
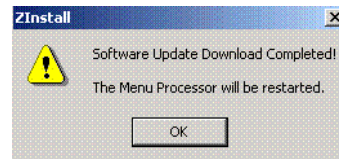


Figure 21. Main Panel Reset Button



If you selected only the Menu panel to update, the following screen appears (Figure 22). Touch **OK** to restart the Menu panel.

Figure 22. Zodiac Menu Panel Reset Prompt



13. When Menu panel initialization completes (which may occur before the Video Processor initializes) a Windows logon window appears. You do not have to enter a user name or password. Just touch **OK**.
14. The Zodiac Menu application will then load, run, and display its startup screen. Touch the **Home** button, then the **Status & Diag** button to verify the correct software version has been installed (Figure 23).

Figure 23. Zodiac Status Screen



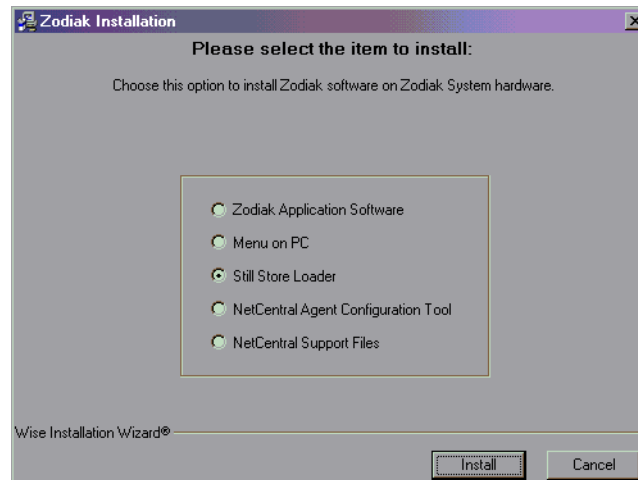
## Install Still Store Loader

A Still Store Loader application is available to allow downloading and uploading of images to and from a networked device and the Zodiac Still Store. Still Store capture and storage is part of the Zodiac feature set in software version 1.3.0 and later. You may install the Still Store Loader application to the Zodiac Menu panel or a networked PC.

### To Install the Still Store Loader Application:

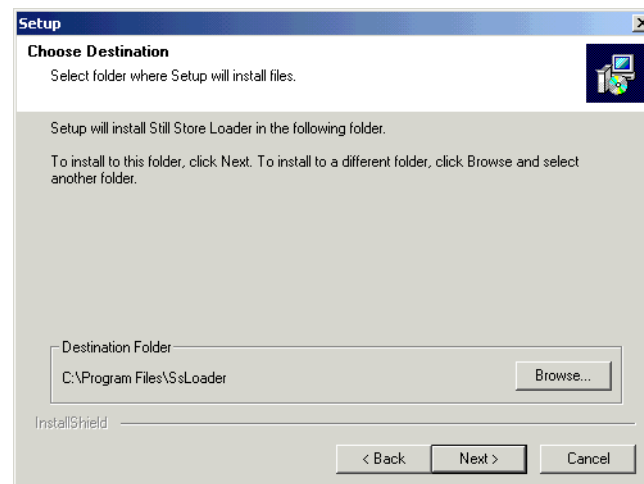
1. Run the Zodiac Install program from the Zodiac Software CD.
2. When the initial Zodiac Installation screen appears, select **Still Store Loader** (Figure 24 on page 29).

Figure 24. Zodiac Software Update, Still Store Loader Selected



3. Click on the **Install** button, and then click **OK** on the following screen.
4. Choose where you wish to install the program. The default C:\Program Files\SsLoader folder is recommended (especially if installing on the Zodiac system), and can be selected now by clicking on the **Next >** button (Figure 25). You can use the **Browse** button to choose a different location if you wish.

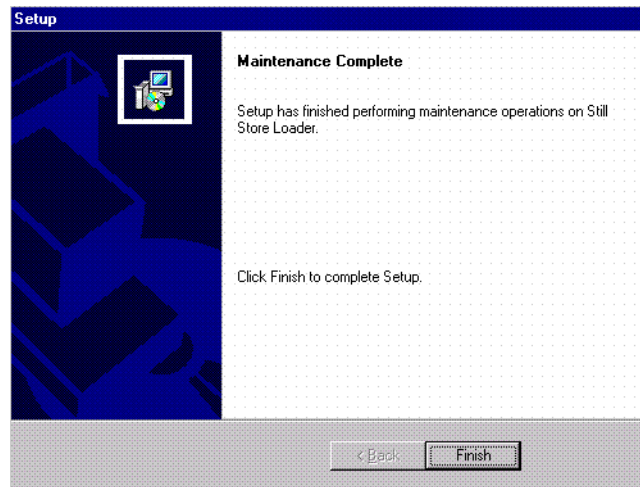
Figure 25. Still Store Loader Installation Destination



5. The installation occurs after the **Next >** button is pressed, and when finished the following screen appears (Figure 26). It is recommended you restart the computer now by clicking **Finish**. However, you can choose to restart the computer later if you wish.



Figure 26. Still Store Loader Installation Reset Computer



Refer to the *Zodiak User Manual* provided on the Documentation CD-ROM for complete details on using the Still Store Loader application.

### To Uninstall the Still Store Loader Application:

1. Run the Windows **Add/Remove Programs** utility from the desktop.

## Verify Switcher Operation

After software installation is complete, verify switcher operation by performing the following checks:

1. Check overall switcher operations. Make sure panel and frame communication is working by checking crosspoint selection from the Main panel and Menu panel DPOPs.
2. Check that your Eng Setup and Daily Setup configuration settings are correct. Older settings should be the same as before, but the new software may have additional settings that will need to be defined.

**Note** This includes the new Ports & Devices menu in Eng Setup. This menu modifies serial and CPL port configuration. Existing serial and CPL ports in use will need to be reconfigured with this new menu.

3. Check that your effects run properly. Older effects should work with the new software. If there are differences, however, you will need to edit or rebuild the effect with the new software version.

If you experience system errors or unusual switcher behavior, perform the *Drain NV RAM Procedure* on page 34.

If all system operational checks are correct, save the new configuration file and effects to a new Zip disk and store in a safe place. Do not overwrite the files previously saved from the old software. New configuration and effect files will not work with older software.

## Verify or Set Date and Time of System Components

After software installation is complete and switcher operation has been verified, verify that your system components (Menu panel, Video Frame, and Main panel) are all set to the correct date and time. Incorrect date and time settings can interfere with the use of Temporary Authorization codes issued for enabling switcher options.

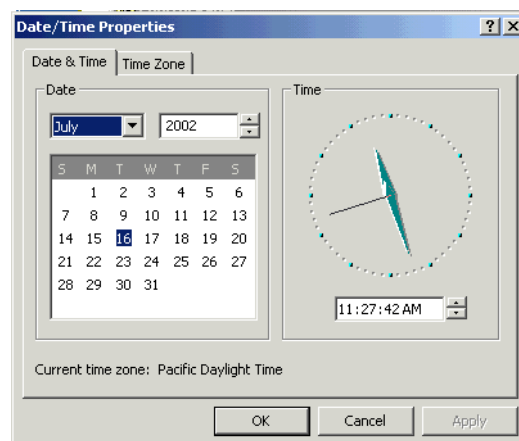
**Note** These procedures use a keyboard and mouse connected to the Menu panel.

### Verify or Set Menu Panel Date and Time

To verify or set the date, time, and time zone on the Menu panel, do the following:

1. Minimize the Zodiac Menu panel application by selecting the **Home** button, then the **Minimize Menu** button in the Home menu to view the Windows 2000 desktop.
2. Under the Windows **Start** button, select **Settings/Control Panel/Date/Time**.
3. This will bring up the Date/Time Properties screen ([Figure 27](#)). In the Date & Time tab verify or set the correct time and date.
4. Under the Time Zone tab, verify or set the correct time zone.
5. Select **OK** and close the window.

Figure 27. Verify or Set Windows 2000 Date and Time



## Verify or Set Video Processor Date and Time

To verify or set the date and time on the Video Frame, do the following:

1. With the Zodiac Menu panel application minimized, open Windows Internet Explorer on the Menu panel.
2. In the web browser's address field, type the Video Processor's frame IP address, 192.168.54.18 (the factory default), for example.
3. This will bring up the main Zodiac Web Access screen (not shown). Select the link on the left labeled **Frame Date and Time**.
4. In the Frame Date and Time screen (Figure 28), enter the current date and time to match that of the Menu panel
5. When finished, select the **Save New Settings** button.
6. Select the RT Panel link in the Frame Date and Time screen.

Figure 28. Video Frame Date and Time Screen

**Zodiak Web Access**

[Software Versions](#)

[Frame Status](#)

[Frame Message Log](#)

[Frame Network Addresses](#)

[Frame Date and Time](#)

[RT Panel](#)

### Frame Date And Time

**Date**

Day :  Range 1 to 31

Month :  Range 1 to 12

Year :

**Time**

Hour :  Range 0 to 23

Minute :  Range 0 to 59

Second :  Range 0 to 59

## Verify or Set Main Panel Date and Time

To verify or set the date and time on the Main (RT) panel, do the following:

1. From the Frame Date and Time screen, select the **RT Panel** link ([Figure 28 on page 32](#)).

**Note** The Main panel (RT) Web Access screens may also be reached by entering the Main panel IP address in the address line of the web browser.

2. This will bring up the main web access screen for the Main panel (not shown). Select the Main Panel Date and Time link.
3. In the Main Panel Date and Time screen ([Figure 29](#)), verify or set the correct date and time to match that of the Video Frame and the Menu panel.
4. Select the **Save New Settings** button to finish.
5. Close the web browser.

Figure 29. Verify or Set Date and Time on Main Panel

The screenshot shows the 'Zodiak Web Access' interface. On the left is a navigation menu with links: [Main Panel Message Log](#), [Main Panel Network Addresses](#), [Main Panel Date and Time](#) (highlighted), and [Zodiak Frame](#). The main content area is titled 'Main Panel Date And Time' and contains the following fields:

Date		
Day	: <input type="text" value="16"/>	Range 1 to 31
Month	: <input type="text" value="7"/>	Range 1 to 12
Year	: <input type="text" value="2002"/>	
Time		
Hour	: <input type="text" value="11"/>	Range 0 to 23
Minute	: <input type="text" value="27"/>	Range 0 to 59
Second	: <input type="text" value="53"/>	Range 0 to 59

At the bottom of the form are two buttons: 'Save New Settings' and 'Refresh'.

## Other Zodiac Update Information

### Drain NV RAM Procedure

When the system software installation is complete perform this optional procedure if you want to drain NV RAM.

**Note** Make sure you have backed up configuration and E-MEM data to the Zip drive.

Zodiac system non-volatile memory (NV RAM) contains Engineering, Suite, and User configuration data, and also has data for all the E-MEM registers. This data is stored as files on the Video Frame hard disk, and is loaded on bootup. Errors in this data could cause Zodiac system problems, which may be overcome, perhaps only temporarily, by draining the NV RAM using this procedure.

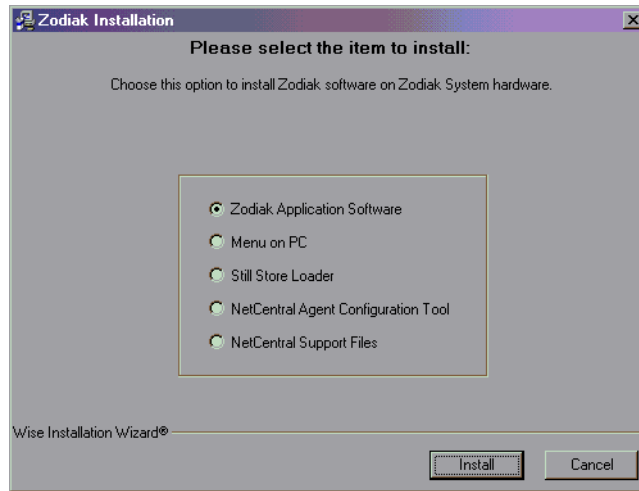
You should always maintain current backup copies of your configuration and E-MEM files compatible with your current software version, so that they can easily be restored after the NV RAM is drained. Draining NV RAM reverts the system back to default values. Installing backup files immediately returns your system to its fully operation state. Without backup files you will need to re-enter all the Engineering, Suite, and User settings and rebuild all your effects.

#### To Drain the Zodiac NV RAM:

1. Reset the Video Frame using the engineering boot dial setting **1** (one).
  - a. Turn the Control Processor/Still Store/DSK module **S2** boot dial switch to position **1**. Position 1 boots the control processor operating system without launching the Zodiac application, to permit software update if the application hangs.
  - b. Press the **Reset** button and allow at least 30 seconds for the system to reboot. The frame must be reset after changing the boot switch position. Simply moving the switch does not affect a running system.
2. Drain NV RAM.
  - a. Run the Zodiac Install program from the Menu panel desktop or from the Zodiac Software CD (the CD is not required).

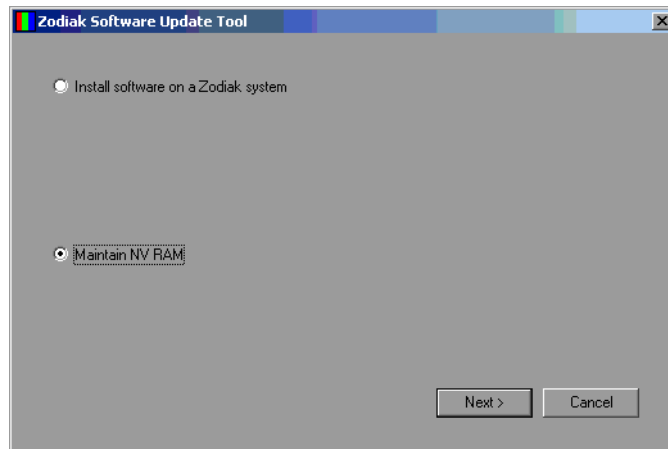
- b. Select the **Zodiak Application Software** button and then touch the **Install** button.

Figure 30. Zodiac Application Software Selected



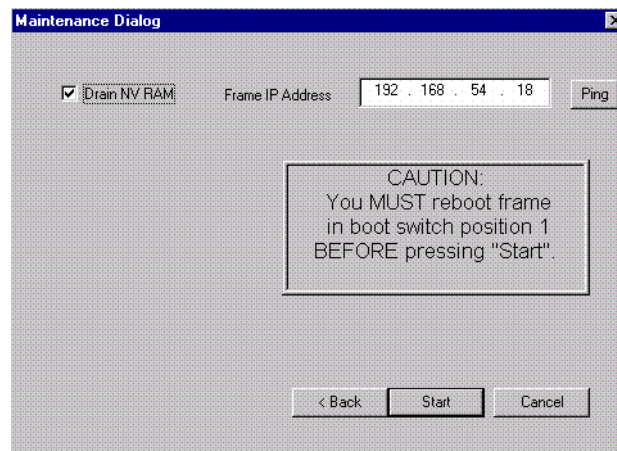
- c. Select the **Maintain NV RAM** box, then press **Next**.

Figure 31. Maintain NV RAM Selected



The following screen will appear (Figure 32 on page 36).

Figure 32. Drain NV RAM Screen



- d. Communications must exist between the Menu panel and the Video Frame, where NV RAM resides. Touch **Ping** to test the connection. If unsuccessful, the communications problem must be corrected before proceeding (it could be an incorrect IP address).
        - e. After a successful Ping, check the **Drain NV RAM** check box and touch **Start**, and confirm the dialog box by touching **OK**.
        - f. A progress bar will be displayed. When done, touch **OK**.
3. Reset the Video Frame again, using the operation boot dial setting.
  - a. Turn the Frame Control Processor/Still Store/DSK module **S2** boot dial switch to position **0**.
  - b. Press the **Reset** button and allow at least 30 seconds for the system to reboot.
4. Restore your backup files in the following order:
  - a. Reload your backup Engineering Setup file and make sure it is correct by, for example, checking that the proper source names appear in the Eng Setups Sources menu.
  - b. Load a Suite Profile, and check that the Suite Preferences settings are correct.
  - c. Load a User Profile and check that the User Preferences settings are correct.
  - d. Load a bin of E-MEMs and run them to check that they operate correctly.
  - e. Load Source Memory and test their defaults.



5. If there are any problems with any of the restored files, they may have become corrupted and need to be deleted and rebuilt. If a problem file locks the system, you may need to drain NV RAM again to restore system operation, but you will know what file is responsible. Contact Grass Valley Group Customer Service if you need troubleshooting assistance.

**Note** After NV RAM files are removed, the Still Store will not be prepared for use until NV RAM File Saves are enabled. This may take 2 minutes. If you are using the Still Store or viewing the Stillstore menus at the time of system reset, a **Still store disconnected** message will appear. Once the files have been saved, the Stillstore menu bar will report **Still store – connected**. You will then need to refresh the Stillstore menu manually by making a menu change on the Menu panel.

## Zodiac System Default IP Addresses

The default IP addresses shipped from the factory have been chosen to make Zodiac configuration easy. Numbers were chosen to work with other Grass Valley Group devices in a default standalone network configuration.

Table 1. Default IP Addresses

Device	IP Address	Address Set/Viewed In:
Video Processor Frame	IP Address: 192.168.54.18 (Menu or Facility LAN)	Web browser
	IP Address: 192.168.55.18 (Panel LAN)	
	Gateway IP: 192.168.54.1 (External Gateway)	
Main Panel	Panel IP Address: 192.168.55.8 (Panel LAN)	Web browser or Main Panel Configuration procedure
	Panel Gateway IP: 192.168.55.18 (To Menu Panel)	
	Frame IP Address: 192.168.55.18 (Panel LAN)	
	Menu IP Address: 192.168.54.8	
Menu Panel	IP Address: 192.168.54.8 (Menu LAN)	Windows 2000 Network and Dial Up Connections
	Default Gateway: 192.168.54.1 (External Gateway)	
	Frame IP: 192.168.54.18	Eng Setup – System – Config Menu
	RT Panel IP: 192.168.55.8	
32 Crosspoint Remote Aux panels (when hard reset with the front panel buttons)	V0.0.2a Software: IP Address: 192.168.0.250 Frame IP: 192.168.0.251 Gateway IP: 192.168.0.1 Subnet Mask 255.0.0.0,	Web browser  Note that 32-Crosspoint Remote Aux panel default IP addresses must be changed to operate with a Zodiac system whose other components are configured with default IP addresses.
	V1.6.5 Software: IP Address: 192.168.1.2 Frame IP: 192.168.1.1 Gateway IP: 192.168.1.1 Subnet Mask 255.255.255.0,	

