

Zodiak

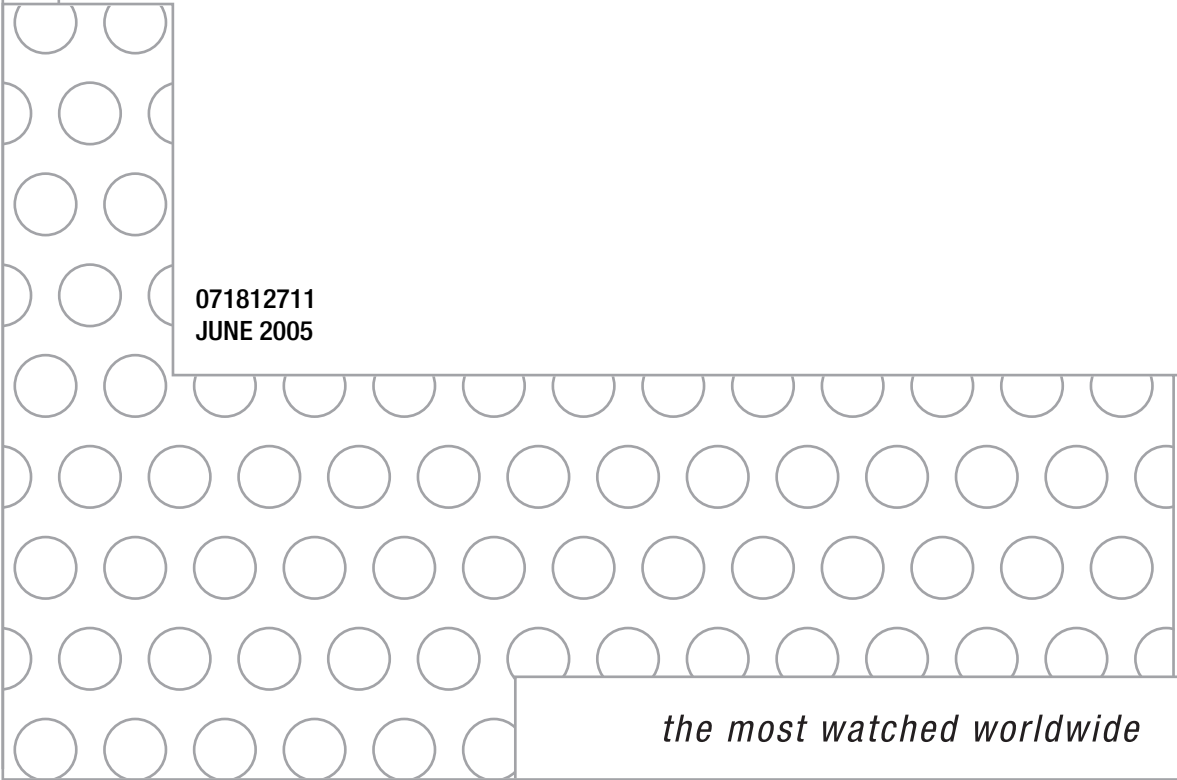
DIGITAL PRODUCTION SWITCHER

Release Notes



SOFTWARE VERSION 5.1

071812711
JUNE 2005



the most watched worldwide

Contacting Grass Valley

Region	Voice	Fax	Address	Web Site
North America	(800) 547-8949 Support: 530-478-4148	Sales: (530) 478-3347 Support: (530) 478-3181	Grass Valley P.O. Box 599000 Nevada City, CA 95959-7900 USA	www.thomsongrassvalley.com
Pacific Operations	+852-2585-6688 Support: 852-2585-6579	+852-2802-2996		
U.K., Asia, Middle East	+44 1753 218 777	+44 1753 218 757		
France	+33 1 45 29 73 00			
Germany, Europe	+49 6150 104 782	+49 6150 104 223		

Copyright © Thomson Broadcast and Media Solutions All rights reserved.

Grass Valley Web Site

The www.thomsongrassvalley.com web site offers the following:

Online User Documentation — Current versions of product catalogs, brochures, data sheets, ordering guides, planning guides, manuals, and release notes in .pdf format can be downloaded.

FAQ Database — Solutions to problems and troubleshooting efforts can be found by searching our Frequently Asked Questions (FAQ) database.

Software Downloads — Software updates, drivers, and patches can be downloaded.

Contents

Zodiak Release Notes	5
Introduction	5
New Features in Release 5.0	5
Changes in Release 5.1	6
Macro Recall from E-MEM	7
E-MEM Prefs Macro Sublevel Assignment	7
Macro Catalog Menu	8
E-MEM Pane	8
E-MEM 300 Mode	9
Overview	9
E-MEM Prefs Menu	10
300 Mode Operation	10
No Shift Source Selection	12
Video Processing Pixelator	13
Video Processing Menu	13
Pixelator Controls	13
DDR/VTR Variable Play Speed	14
AMP Serial Machine Control	15
Zodiak 5.1 Update	17
Hardware Notes and Requirements	17
Mix Effect Module Heat Sinks	17
Control Processor SBC1000 Submodule	17
Dual Mix Effects Module Fuse Upgrade	18
Installing Zodiak System Software	18
Zodiak System Update Checklist - Revised for 5.1	18
Update Software with Zodiak Software Update Tool	19
Install Zodiak System Software	20
Drain NV RAM	26
Restore Backup Files	29
Verify Switcher Operation	29
Backup New Configuration and Effects Files	30
Verify or Set Date and Time of System Components	31
Verify or Set Menu Panel Date and Time	31
Verify or Set Video Processor Date and Time	32
Verify or Set Main Panel Date and Time	33
Calibrate Lever Arms and Joystick	33
Other Zodiak Update Information	34
Zodiak System Default IP Addresses	34

Zodiak Release Notes

Note The Zodiak 5.1 software has no new features and operates the same as the 5.0 version Zodiak software, except some software problems have been corrected. Refer to the Zodiak 5.1.0 Release Notes Addendum for specific information. The remainder of this document is essentially identical to the 5.0 Release Notes.

Introduction

This document describes installation and other information specific to Zodiak Digital Production Switcher Release 5.1 software. See [page 17](#) for specific Zodiak system update instructions.

CAUTION The recommended Zodiak software update procedure has been changed for increased reliability. Zodiak system files must be saved, NV Memory cleared, and the system files then must be reloaded. Carefully read the revised installation instructions and follow the procedures precisely.

WARNING Make sure that required heat sinks have been added to the Mix Effects module(s) in the Zodiak Video Frame before you install this version of Zodiak software. Your hardware must be modified before software installation or the Mix Effects module(s) will overheat.

CAUTION Zodiak 3.x and higher software requires an SBC1000 Frame Processor upgrade for optimum performance on 3 M/E systems. The SBC1000 sub-module requires 2.2 or later software. You must install compatible software BEFORE you install the SBC1000.

CAUTION Five amp replacement fuses must be installed in the Zodiak Dual Mix Effects module 671634700 before you install the 3.x or higher software.

New Features in Release 5.0

- Macro recall from E-MEM (see [page 7](#))
- E-MEM 300 Mode Operation (see [page 9](#))
- No Shift Source Selection (see [page 12](#))

- Video Processing Pixelator (see [page 13](#))
- DDR/VTR Variable Play Speed (see [page 14](#))
- AMP Serial Machine Control (see [page 15](#))

Changes in Release 5.1

- Restrictions regarding the need to apply delays when using certain E-MEM commands in combination in macros (**Recall**, **Put**, **Get**, **Mod**, **Mod All**, **Clear WkBfr**) have been removed in Release 5.0. However, delays are still needed for multiple time cursor changes (**Next KF**, **Prev KF**, **Begin**, **End**, **Go To KF**, **Go To Time**, and **Rewind**). If you wish to use two or more of these commands adjacent to each other in a macro, a delay of at least one frame between them is required for consistent system behavior.

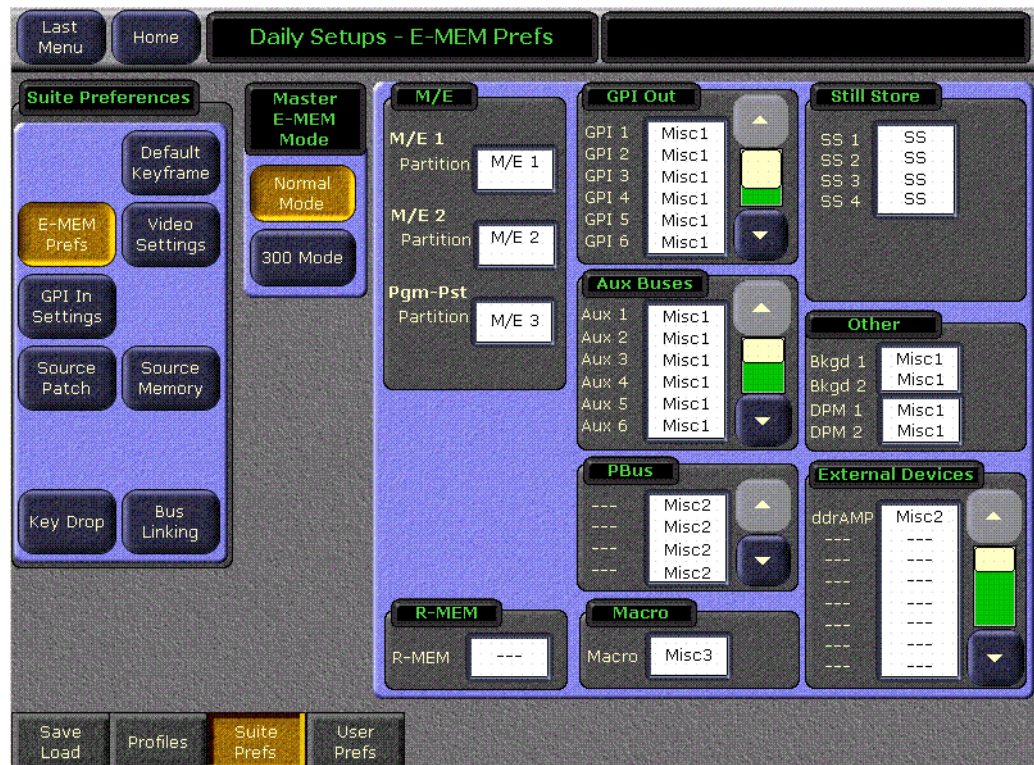
Macro Recall from E-MEM

A macro can be added to an E-MEM keyframe and be executed when that E-MEM register is recalled and run. Only the macro register number (and its Enabled state) is saved to the E-MEM register, not the actual macro commands. If a macro is subsequently changed, any E-MEM specifying that macro register will run the modified macro.

E-MEM Prefs Macro Sublevel Assignment

A Macro sublevel can be assigned to any E-MEM level (default is **Misc 3**). This assignment is accomplished with the E-MEM Prefs menu, accessed via **Daily Setups, Suite Prefs, E-MEM prefs** (Figure 1).

Figure 1. E-MEM Prefs Menu



If you want to be able to prevent any assigned macro from running in an effect, make sure the Macro sublevel is assigned to a separate level, and then enable or disable that level to turn all the E-MEM macros on or off.

Macro Catalog Menu

The Macro Catalog menu is used to add a macro register number and its Enabled state to an E-MEM effect. The operator navigates to the desired location in the current effect, selects the desired Macro, and inserts or modifies a keyframe to associate that macro to that location in the effect.

Figure 2. Macro Catalog Menu



E-MEM Pane

Touching the E-MEM data pad opens the Macro selection menu, from which you select the desired macro. The name of the selected macro is then displayed in the data pad.

Note Do not attempt to use the Macro Catalog pane on the left or the Macro Register knob control on the right to associate a Macro to an E-MEM. The E-MEM data pad is used for this purpose.

The **Enable** button enables or disables that specific macro. It defaults to On whenever a macro is selected.

Both the selected macro register number and its Enable state are added to the current effect location when a keyframe is inserted or modified.

E-MEM 300 Mode

Overview

300 Mode is an alternative Master E-MEM method of operation that mimics the behavior of the Grass Valley Group Model 300 switcher. In this mode, Master E-MEM Learn operations store the register numbers of the individual M/Es, allowing the recall of different combinations of M/E registers with a single button press. In this operating mode Master E-MEM Learn operations do not change any existing contents of the individual M/E E-MEM registers. Only M/Es are affected. Other E-MEM levels (DPM, Still Store, etc.) behave the same in either Normal or 300 Mode. The current Master E-MEM operating mode is saved and loaded as a Suite Preference.

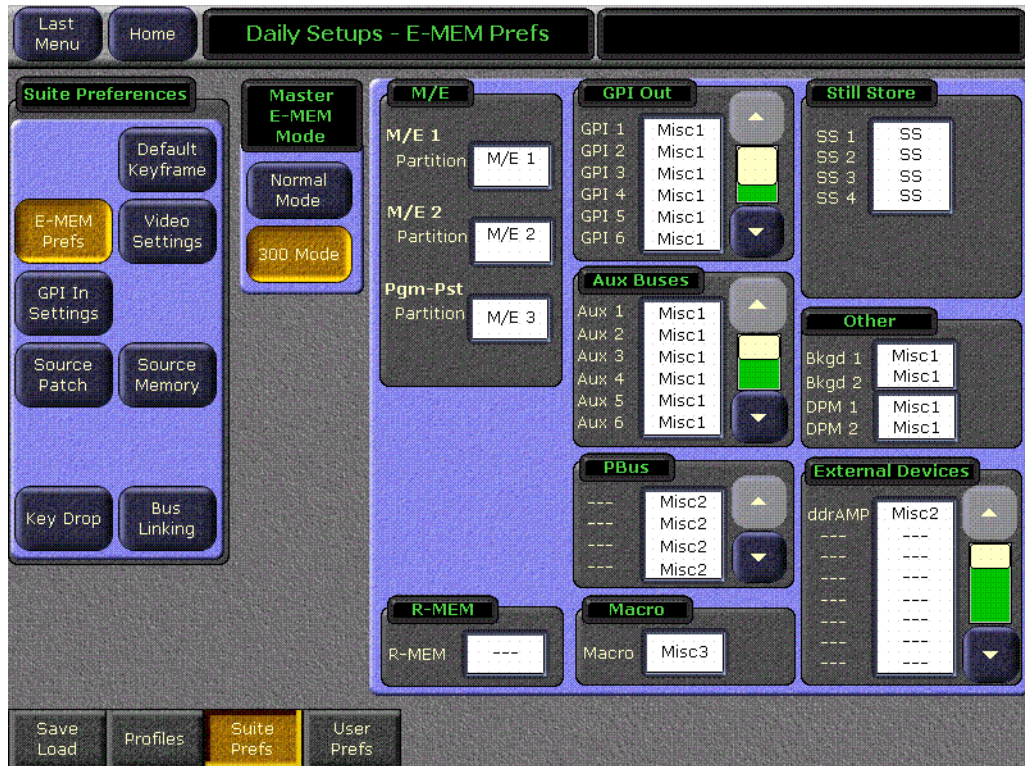
When operating in 300 Mode, the user Learns the first keyframe of the each effect into individual M/E E-MEM registers. If an effect has additional keyframes, they are created using Master E-MEM keyframe editing (delegating that M/E and using Insert, Modify, etc.). When all the individual M/E effects registers are complete, the user selects the desired register on each individual M/E E-MEM subpanel, delegates the M/E levels involved, and then Learns that Master E-MEM register. Recalling that Master E-MEM register then brings up the individual M/E registers that were learned (along with the settings of any other non-M/E delegated levels).

In general, you will need to decide which Master E-MEM operating mode you wish to use, and then build all your effects for use in only that mode. While effects built in one Master E-MEM mode will recall and run on a system operating in the other mode, the results will probably not be what you expect. If you find your effects behaving oddly, check that the correct Master E-MEM operating mode is selected.

E-MEM Prefs Menu

The Master E-MEM operating mode is selected on the E-MEM Prefs menu, accessed via **Daily Setups, Suite Prefs, E-MEM Prefs** (Figure 3).

Figure 3. E-MEM Prefs Menu



300 Mode Operation

Use the following procedure to operate in Master E-MEM 300 Mode:

1. Select 300 Mode by going to the E-MEM Prefs menu (touch **Daily Setups, Suite Prefs, E-MEM Prefs**) and touching **300 Mode**. Alternatively, you can recall a Suite Pref that was saved with this mode selected.
2. Setup first keyframe on one of the M/Es, press the individual M/E's E-MEM **Learn** button, then select the bank and register on that subpanel to which you wish to save those settings.
3. If that effect will have multiple keyframes, delegate the Master E-MEM subpanel to only that M/E and edit the effect using keyframe editing, Inserting, Deleting, and Modifying keyframes as required.
4. Repeat [Step 2](#) and [Step 3](#) for all the effects you plan to use on that M/E.

5. Select a different M/E, and repeat the steps immediately above for all the effects for that M/E. Continue until you have built all the effects on all the M/Es you intend to use.

Note Unlike Grass Valley 4000 switchers, Zodiac systems allow keyframe Inserts between keyframes. When you change Master E-MEM delegations, the effect time cursor does not move, so it may be between keyframes on the newly delegated M/E. On a 4000 switcher, since this location is not on a keyframe you would be prevented from inserting, but a Zodiac system allows this. When using 300 mode, check that you are at the correct location in the effect on a newly delegated M/E before you insert any keyframes.

6. Select the individual M/E registers you wish to recall together on each individual M/E E-MEM subpanel involved.
7. Delegate the Master E-MEM subpanel to the desired M/Es, press the Master E-MEM **Learn** button, then select the bank and register on the Master E-MEM subpanel to which you wish to save those settings.
8. Repeat the above step for all the combinations of M/E effects you wish to recall together, being sure to Learn them to different Master E-MEM registers.
9. To recall any of the desired combinations of M/E effects, simply press the appropriate Master E-MEM bank and register keypad buttons. You can use **Auto Recall** to automatically delegate the levels involved in that effect.

Note In 300 Mode, if an empty M/E register has work buffer values set but they haven't yet been learned on that individual M/E, performing a Learn on Master E-MEM will not save those settings to that register. Only the register number is saved for that Master E-MEM register in 300 Mode. There is no indication of this except the register will continue to report itself empty on the E-MEM readout displays.

No Shift Source Selection

You can configure the Zodiac system to have 24 source selection buttons on the Main panel. In this mode, the farthest right **Shift** button becomes a normal source selector like the other buttons. No shifted sources are available directly on the M/E bus in this mode. However, any E-MEMs learned with shifted sources selected can still be used to recall those sources even if the No Shift mode is active.

The No Shift operating mode can be set on the Shift Preferences menu, accessed via **Daily Setups, User Prefs, Shift Prefs** (Figure 4). This setting is saved and loaded with Suite Prefs.

Figure 4. User Prefs, Shift Preferences Menu



Video Processing Pixelator

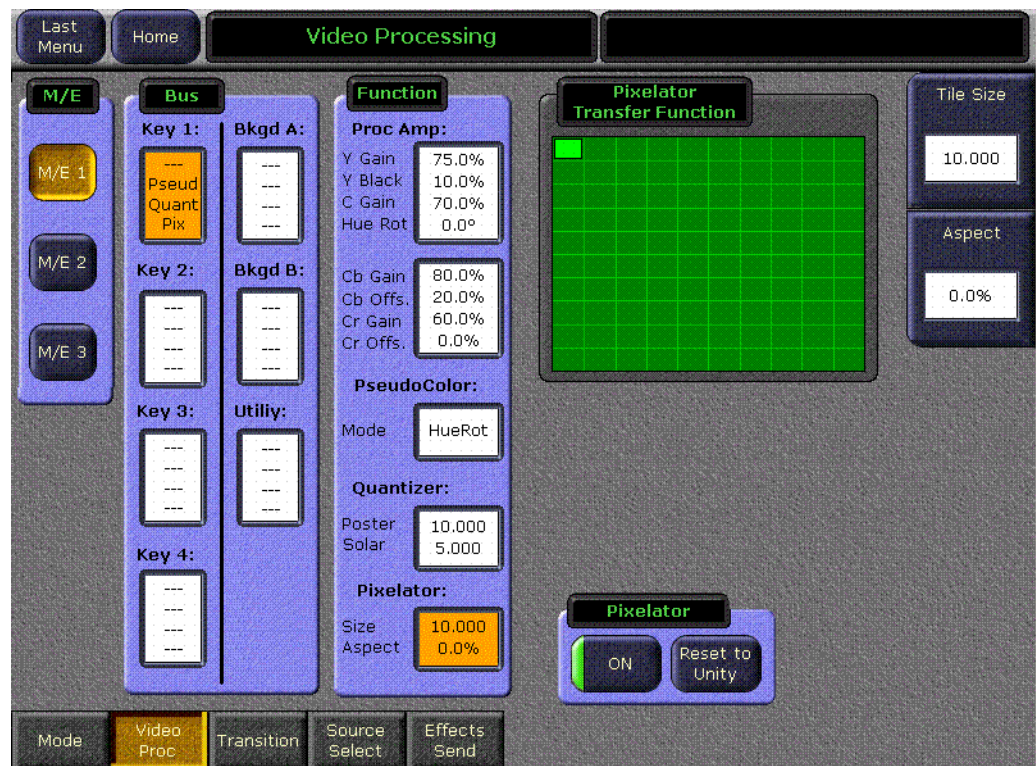
The Pixelator is available on the Video Processing menu, accessed via **M/E**, **Video Processing**.

Video Processing Menu

Pixelator Controls

Touching **Pixelator** in the Function panel displays the Pixelator menu (Figure 5). The Pixelator produces a mosaic appearance. A representation of the resulting mosaic effect is shown in the Pixelator Transfer Function display.

Figure 5. Pixelator Controls



The **Tile Size** soft knob adjusts size of the tiles, in pixels. (The reading is actually overly accurate, to accommodate interpolation. The actual width in pixels of a tile is rounded upward to the nearest multiple of 4).

The **Aspect** soft knob controls the tile aspect ratio. The range is -1.00 to +1.00.

The **Reset to Unity** button sets both values to zero, resulting in no mosaic.

DDR/VTR Variable Play Speed

The External Device Control menu now permits variable speed playback of DDRs and VTRs (Figure 6).

Figure 6. External Device Control Menu, Variable Play Speed



The **Var Play Speed** button turns the variable speed function On and Off. When On, the device will play at the speed displayed when the Play button is pressed. When Off, normal forward play speed occurs regardless of the rate displayed in the Play Speed data pad.

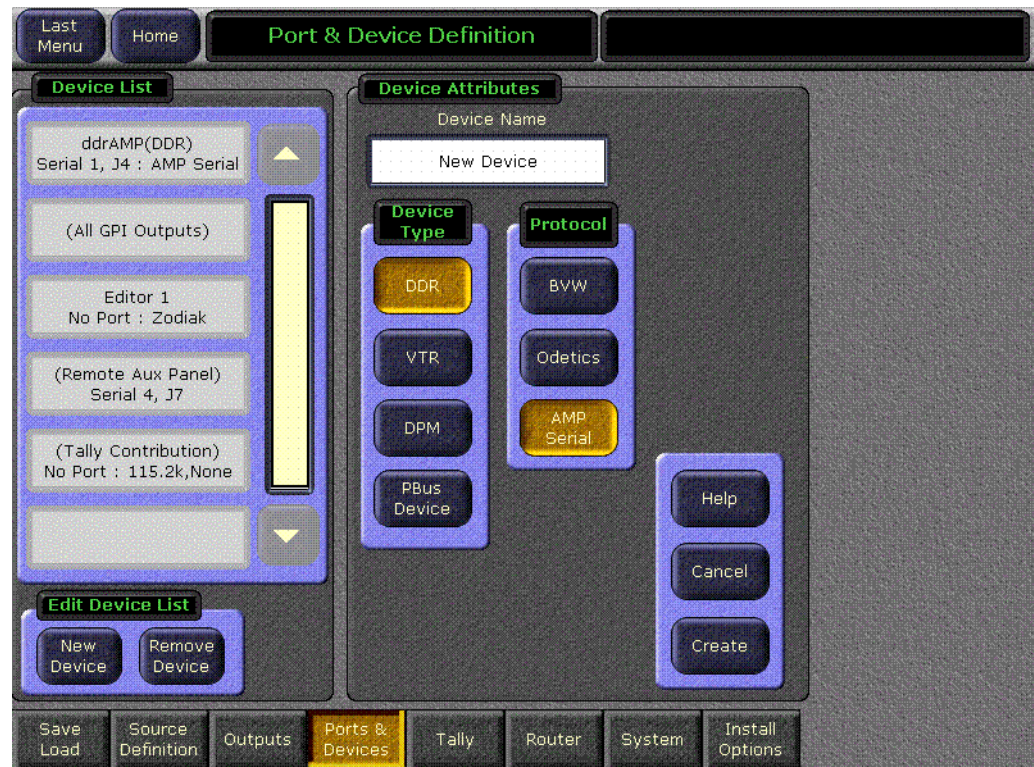
The Play Speed data pad is used to set the variable speed playback rate, as a percentage. The range is $\pm 5000\%$, corresponding to 50x forward and backward play speeds. Touching the data pad brings up a keypad for entering the play speed.

A variable play speed set in the larger left pane is retained for use on that device if control is swapped to a smaller pane on the right. Pressing the smaller pane's **Play** button plays that device at the speed that was set for that device in the left pane.

AMP Serial Machine Control

The AMP serial external device control protocol supports multiple clip directories and clip file names of up to 80 characters. The BVW protocol does not support clips, and the Odetics protocol supports only the default folder and DOS style eight character plus extension file names. None of these protocols support negative timecode. The AMP Serial Machine Control feature is a software enabled option. Use the **AMP Serial** button on the Port & Devices menu to create this type of external device (Figure 7).

Figure 7. Port & Device Definition Menu, New AMP Serial Device



On the External Device Control menu (Figure 8), touching a **Preset Clip** or **Program Clip** data pad brings up a menu from which you can select the desired folder and then choose a clip in that folder to load for playback (Figure 9). A similar menu is used with the Clip Browser on the External Device Event List menu, and for loading clips in the Timeline Events menu.

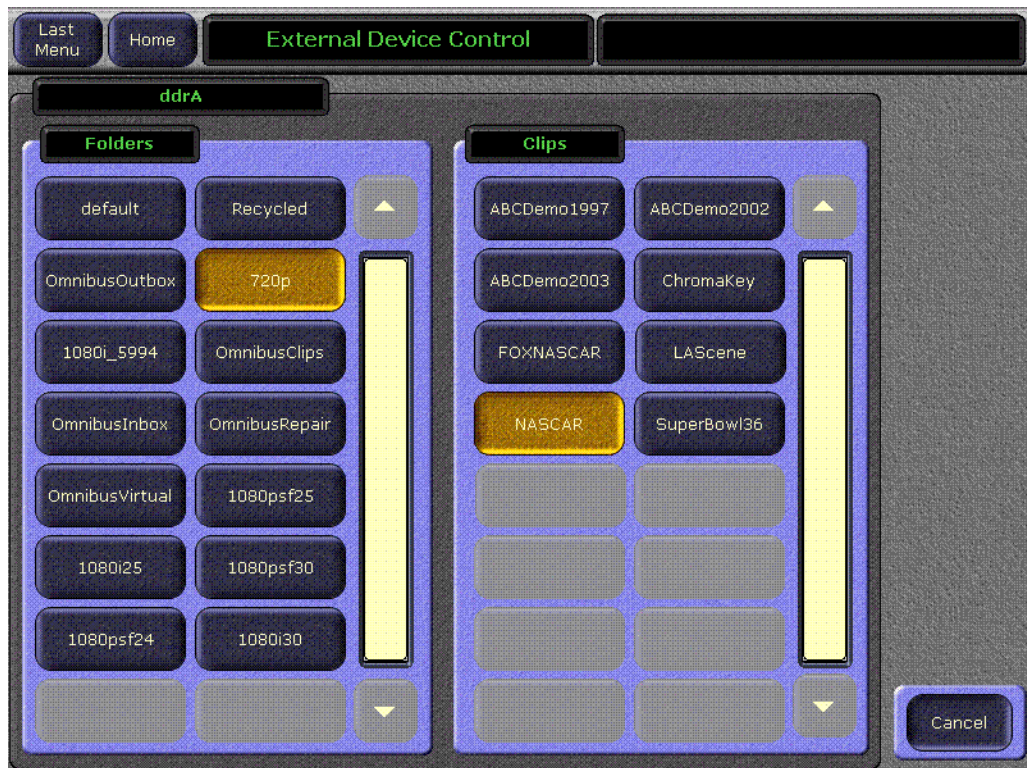
If you change a clip locally on the Profile DDR, that clip name will not be updated on the Zodiak External Device menus. If the folder list or clip list are incomplete, re-enabling the device will fetch the entire folder and clip list.

Note Do not create file or folder names that have the pound character (#) along with either the dash (-) or underscore (_) character, and avoid blank spaces (for example, use “DeadEnd” not “Dead End”). This can inhibit clip access.

Figure 8. External Device Control Menu



Figure 9. Folder and Clip Selection Menu



Zodiak 5.1 Update

Hardware Notes and Requirements

Mix Effect Module Heat Sinks

Before installing this version of Zodiak software, make sure that required heat sinks were added to the Mix Effects module(s) in the Zodiak Video Frame. The heat sinks and instructions were provided with each version 2.1 software CD shipped.

In a 2.5-M/E Zodiak system, there is one Dual Mix Effects module in slot 2 of the Video Frame requiring 8 heat sinks. In a 3-M/E system there is a Dual Mix Effects module in slot 2 (8 heat sinks) and a single Mix Effects module in slot 3 (4 heat sinks). Each FMN kit will include enough heat sinks for a 3-M/E system.

WARNING Your hardware must be modified before software installation or the Mix Effects module(s) will overheat. The ICs on this module may be quite hot when the module is first removed from the frame. Let the module cool before proceeding.

Refer to Field Modification Note (FMN) 075-0693-00 for specific heat sink installation instructions.

Control Processor SBC1000 Submodule

A new SBC1000 (single board computer) submodule is now installed on Zodiak Frame Control Processor modules shipping from the factory (part number 671-6346-02).

CAUTION Zodiak 3.0 software requires an SBC1000 Frame Processor upgrade for optimum performance on 3 M/E systems. The SBC1000 submodule requires 2.2 or later software, for proper boot kernal file. You must install compatible software BEFORE you install the SBC1000. Once installed, if you wish to back down to 2.1 or earlier software you will need to reinstall the earlier Frame processor before you load the older software.

Zodiak 3 M/E systems need additional computing power to support some advanced features. While 5.1 software will run on the earlier slower frame processors, some complex effects may not run smoothly. The processing time required for complicated effects may exceed the time available within a frame, and so frames could occasionally be skipped. Installing the

SBC1000 processor upgrade will prevent this from occurring. Note that Zodiac systems running at 50 Hz have longer field times, and so are less likely to be adversely affected if they use an earlier Frame processor.

1. If you have not already received an SBC1000 processor for your 3 M/E system by prior arrangement, contact Grass Valley Customer Service for ordering information.
2. After the 5.1 software has been installed, remove the existing Video Processor frame Control Processor submodule and replace it with the SBC1000 submodule. Refer to the Field Modification Note (FMN) document supplied with your SBC1000 processor for specific hardware installation procedures.

Check Zodiac System Operation

After the processor upgrade, confirm that the Zodiac system operates properly before you continue.

Dual Mix Effects Module Fuse Upgrade

Additional power consumption by newer software can cause the 3 amp fuses on the Dual Mix Effects module 671634700 to blow. A Field Modification Kit should have been sent to all Zodiac users that contains 5 amp replacement fuses. These fuses must be installed before you upgrade the Zodiac software. Contact Customer Service if you did not receive the FMN kit. Refer to FMN 075075800 for specific instructions.

Installing Zodiac System Software

CAUTION The recommended Zodiac software update procedure has been changed for increased reliability. Zodiac system files must be saved, NV Memory cleared, and the system files then must be reloaded. Carefully read the revised installation instructions and follow the procedures precisely.

Zodiac System Update Checklist - Revised for 5.1

The following checklist is an overview of the steps involved in updating a system running recent Zodiac software to version 5.1. These actions should be performed in the listed order. Detailed instructions for all the procedures are provided later in this document.

- Verify heat sinks are installed on the Mix Effects module(s), an SBC1000 is installed, and the Mix Effects Module fuses have been upgraded.

- REQUIRED** – Backup Eng Setups, Suite Profile, User Prefs, Source Memory, Macros, and E-MEM files.

Note You will need these backup files to restore system data after the update, and if you reinstall older software.

- Update Zodiak system software with the Software Update Tool.

Note If updating from earlier software, prompts for updating the frame kernel will appear.

- REQUIRED**– Clear NV Memory:

- Close the Zodiak Menu application and any other running programs.
- Set the Video Processor frame boot dial switch to **1**.
- Reset the frame and wait at least 30 seconds for reboot.
- Run the Zodiak Install program and select Clear NV Memory
- Set the Video Processor frame boot dial switch back to zero (0) and reboot the frame.

- REQUIRED** – Reload saved configuration files.

- Verify correct switcher operation after update. If this is an upgrade from a version earlier than 2.2, reconfigure existing Serial and CPL ports and devices with new Ports & Devices menu.

- Save the current Eng Setups, Suite Prefs, User Prefs, Source Memory, Macros, and E-MEM files to a NEW backup

- Verify date and time settings on the Menu panel, Video Frame, and Main panel.

- Perform Lever Arm and Joystick Calibration.

- OPTIONAL** – Install Still Store Loader application with Software Update Tool (see [page 21](#)).

- Consult Release Notes for new features and config changes.

Update Software with Zodiak Software Update Tool

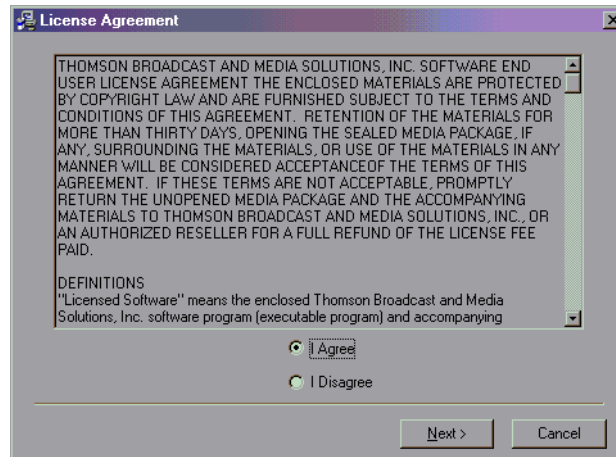
The Zodiak Software Update Tool installs various software elements to Zodiak system devices. The Update Tool and all the associated software is provided on the Zodiak Software CD. The Update Tool installs on the Menu panel and creates backup copies of the current and previous versions of software.

A mouse and PC computer keyboard are useful for a standard software installation. However, if IP addresses are to be changed from their defaults, mouse and keyboard are required.

Install Zodiac System Software

1. If you have not already done so, save your system configuration files and E-MEM registers to Zip disk and store it in a safe place. You will need these files if you decide to return to the earlier software version or if you perform the Drain NV RAM procedure.
2. Check that the rotary Boot switches on both the Video frame (Figure 18 on page 25) and the Main panel (Figure 19 on page 25) are set to **0**.
The normal operating position is **0** on both.
3. Exit the currently running Zodiac Menu by touching the **Home** button, then the **Exit Menu** button on the Home menu. Exit any other running applications on the Windows Toolbar (including Still Store Loader, etc.).
4. Insert the Zodiac Software CD into the CD-ROM drive on the right side of the Zodiac Menu panel. The Zodiac installation program will automatically launch.
5. A license agreement screen will appear (Figure 10).

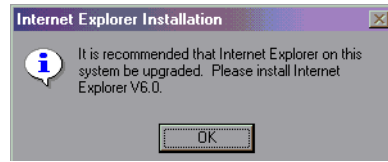
Figure 10. Grass Valley License Agreement



6. Agree to the terms and touch **Next >**.

Note If a Internet Explorer Installation box appears, touch OK. The upgrade of Explorer is not necessary for the Software Update but is recommended. Internet Explorer is available from Microsoft.

Figure 11. Internet Explorer



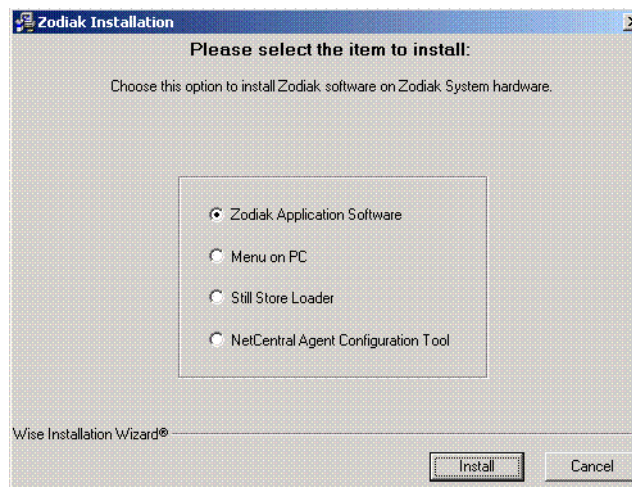
The Zodiak Installation screen appears (Figure 12) with the following options.

- Zodiak Application Software — Used for installing software on actual Zodiak system hardware.
- Menu on PC — Installs only the Zodiak Menu application on a PC or an additional Menu panel, which when networked with the Zodiak system provides an additional control point.
- Still Store Loader — Installs the Still Store Loader utility program on the system where the CD is currently mounted, either a PC or the Zodiak Menu panel.
- NetCentral Agent Configuration Tool — Used to install the NetCentral Agent, required for the NetCentral option, on a Zodiak system. Available only when SNMP is configured.

Only one option can be selected at a time.

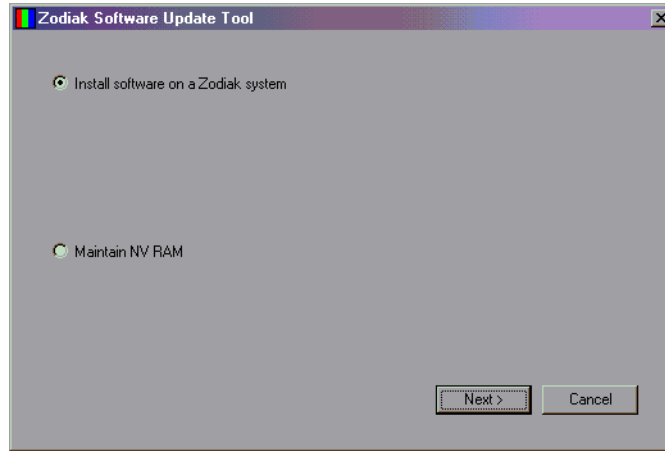
7. Select the **Zodiak Application Software** button and then touch the **Install** button.

Figure 12. Zodiak Application Software Selected



8. Select the **Install Software on a Zodiac system radio** button and then touch the **Next >** button.

Figure 13. Zodiac Application Software Selected

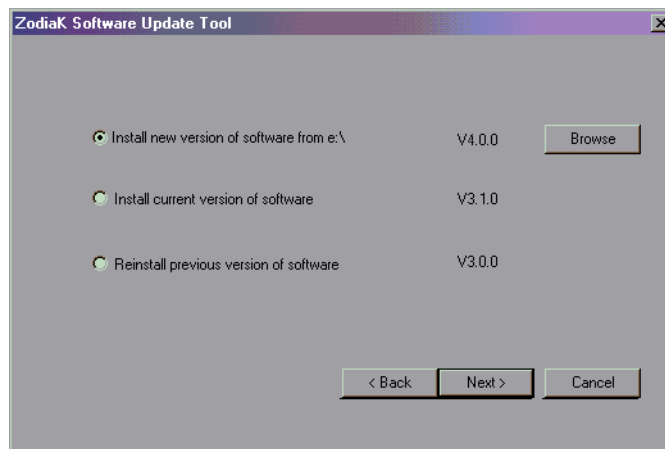


The following three options are available. Only one can be selected at a time.

- **Install new version of software** — Select this option if you are updating your system software. It installs new software from the inserted CD. The **Browse** button is intended for software installation over the network, if the CD disk is not available.
- **Install current version of software** — Re-installs the currently loaded version of software from Menu Panel hard drive. This is generally used to install the current software on new Zodiac hardware attached to the system.
- **Reinstall previous version of software** — Installs the previously loaded software from the Menu Panel hard drive.

9. Select **Install new version of software** option then touch the **Next>** button.

Figure 14. Install New Version of Software Selected

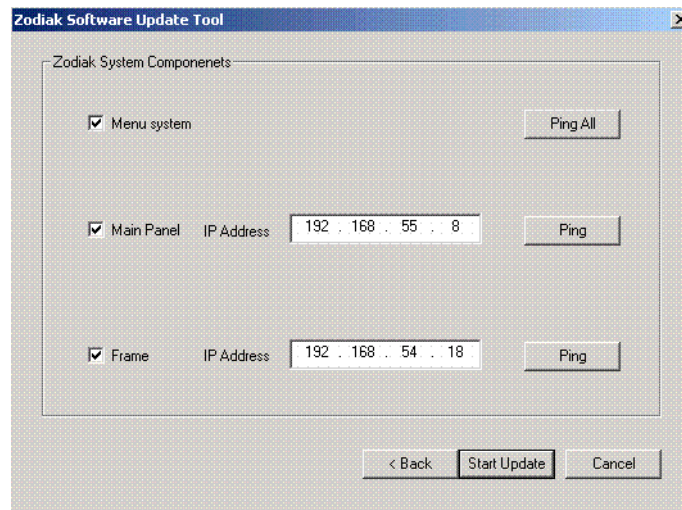


The following Zodiak system component installation options are available. Only the software of the selected targets will be affected.

- **Menu System** — Installs the Zodiak menu application software onto the Menu panel hard disk.
- **Main Panel** — Installs software to the Zodiak Main panel.
- **Frame** — Installs software to the Video Frame.

Note Typically check all boxes when installing a new software version.

Figure 15. Zodiak Software Install Screen 2



10. Touch the **Ping All** button on the upper right, after checking the boxes of all the devices you wish to install. Valid IP addresses are required. The previously used IP addresses are displayed by default.

- If communications succeeds, an **All selected targets Pinged ok** message will appear.
- If a device fails to respond, that device will be identified with a **No reply to Ping** message. The device might be disconnected from the network, be unpowered, or the IP address may be incorrect. If necessary, change the IP addresses on the screen using a standard computer keyboard and mouse connected to the ports on the rear of the Menu panel as described in Section 3 – Configuration of the Zodiak Installation and Service manual. You can test whether a single device is communicating with its individual **Ping** button.

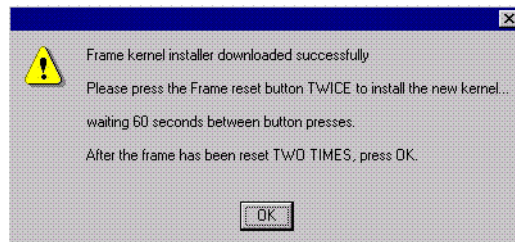
Note All selected devices should Ping successfully before proceeding. If Ping for a selected device fails, continuing installation will make the Update Tool exit.

11. When the installation option selections and IP addresses are correct, touch the **Start Update** button.

If you are updating from a version earlier than 2.2 a kernel update screen will display informing you that the kernel must be replaced. Press **OK** to continue.

Once the new software kernel is downloaded successfully, a screen similar to [Figure 16](#) will prompt you to reset the frame at 60 second intervals.

Figure 16. Kernel Update Reset Message



CAUTION Follow the instructions to reset the Frame Control Processor twice, waiting the specified time (60 seconds) between resets (see [Figure 18 on page 25](#) for Reset button location). When done, touch **OK** on the Reset screen.

The installer will return to the Zodiac Software Install screen ([Figure 15 on page 23](#)). The kernel is now updated but the software has not been loaded. Select the **Start Update** button to complete the update.

During software installation, a Zodiac Download Status screen appears and installation begins. A progress bar is displayed and the components being loaded are identified.

Note If a **Locked .dll** error message appears select **ignore**.

12. When the file transfers are complete, a screen similar to [Figure 17](#) appears. Touch **OK**. The Menu panel automatically resets itself, but you must manually reset the other hardware components you updated ([Figure 18](#) and [Figure 19](#)).

Figure 17. Zodiac Hardware Install Reset Prompt

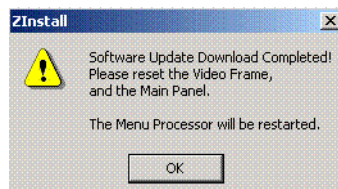


Figure 18. Frame Reset Button

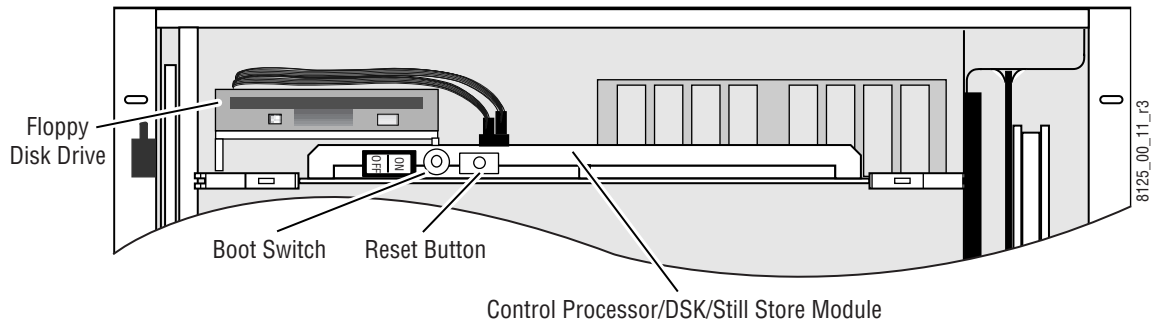
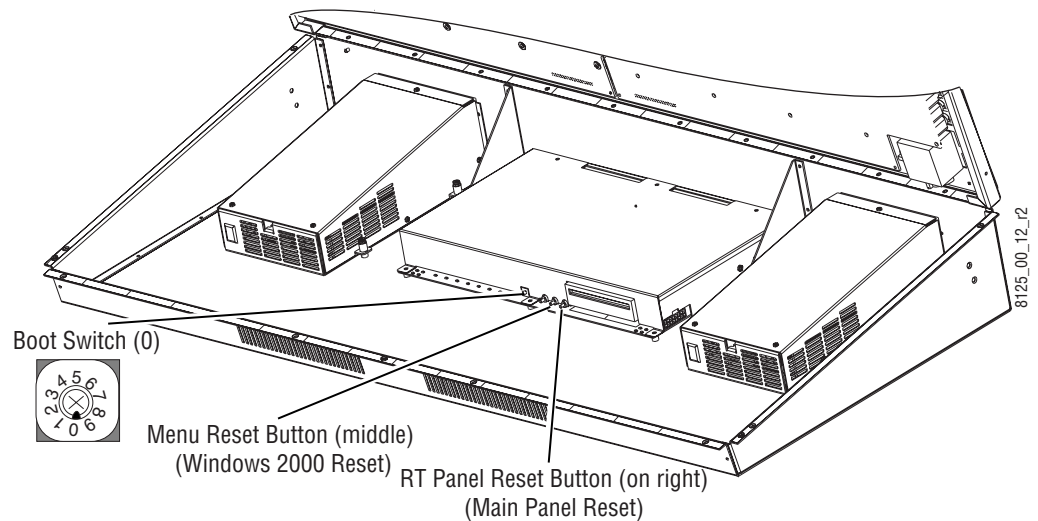
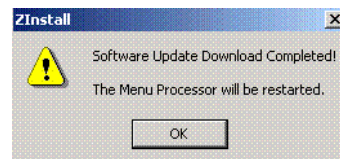


Figure 19. Main Panel Reset Button



If you selected only the Menu panel to update, the following screen appears (Figure 20). Touch **OK** to restart the Menu panel.

Figure 20. Zodiac Menu Panel Reset Prompt



13. When Menu panel initialization completes (which may occur before the Video Processor initializes) a Windows logon window appears. You do not have to enter a user name or password. Just touch **OK**.
14. The Zodiac Menu application will then load, run, and display its startup screen. Touch the **Home** button, then the **Status & Diag** button to verify the correct software version has been installed (Figure 21).

Figure 21. Zodiac Status Screen



Drain NV RAM

Note Make sure you have backed up configuration, E-MEM, and Macro data to the Zip drive.

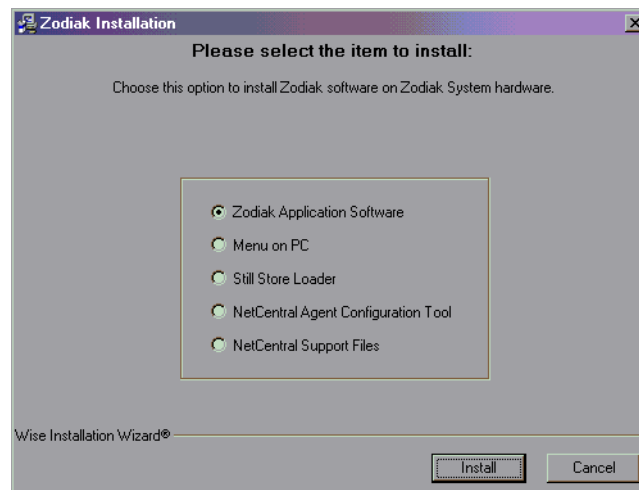
Zodiac system non-volatile memory (NV RAM) contains Engineering, Suite, and User configuration data, and also has data for all the E-MEM registers. This data is stored as files on the Video Frame hard disk, and is loaded on bootup. Errors in this data could cause Zodiac system problems, which may be overcome, perhaps only temporarily, by draining the NV RAM using this procedure.

You should always maintain current backup copies of your configuration E-MEM, and Macro files compatible with your current software version, so that they can easily be restored after the NV RAM is drained. Draining NV RAM reverts the system back to default values. Installing backup files immediately returns your system to its fully operation state. Without backup files you will need to re-enter all the Engineering, Suite, and User settings and rebuild all your effects. and macros

To Drain the Zodiac NV RAM:

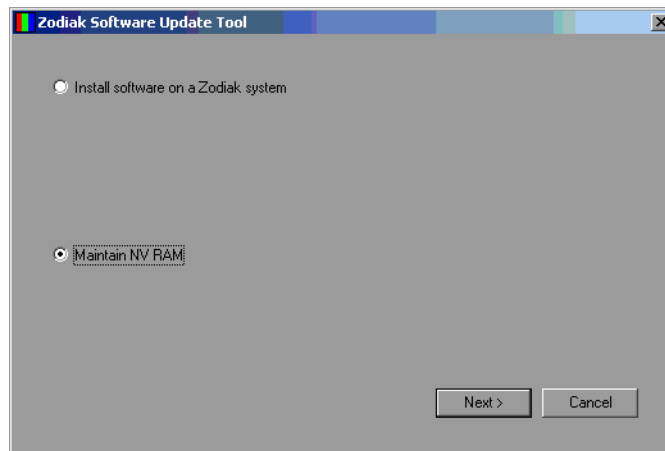
15. Reset the Video Frame using the engineering boot dial setting **1** (one).
 - a. Turn the Control Processor/Still Store/DSK module **S2** boot dial switch to position **1**. Position 1 boots the control processor operating system without launching the Zodiac application, to permit software update if the application hangs.
 - b. Press the **Reset** button and allow at least 30 seconds for the system to reboot. The frame must be reset after changing the boot switch position. Simply moving the switch does not affect a running system.
16. Drain NV RAM.
 - a. Run the Zodiac Install program from the Menu panel desktop or from the Zodiac Software CD (the CD is not required).
 - b. Select the **Zodiac Application Software** button and then touch the **Install** button.

Figure 22. Zodiac Application Software Selected



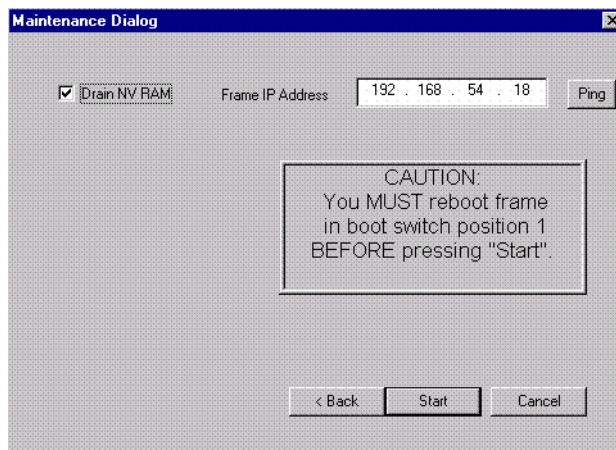
- c. Select the **Maintain NV RAM** box, then press **Next**.

Figure 23. Maintain NV RAM Selected



The following screen will appear (Figure 24 on page 28).

Figure 24. Drain NV RAM Screen



- d. Communications must exist between the Menu panel and the Video Frame, where NV RAM resides. Touch **Ping** to test the connection. If unsuccessful, the communications problem must be corrected before proceeding (it could be an incorrect IP address).
 - e. After a successful Ping, check the **Drain NV RAM** check box and touch **Start**, and confirm the dialog box by touching **OK**.
 - f. A progress bar will be displayed. When done, touch **OK**.
17. Reset the Video Frame again, using the operation boot dial setting.
- a. Turn the Frame Control Processor/Still Store/DSK module **S2** boot dial switch to position **0**.

- b. Press the **Reset** button and allow at least 30 seconds for the system to reboot.

Restore Backup Files

18. Restore your backup files in the following order:
 - a. Reload your backup Engineering Setup file and make sure it is correct by, for example, checking that the proper source names appear in the Eng Setups Sources menu.
 - b. Load a Suite Profile, and check that the Suite Preferences settings are correct.
 - c. Load a User Profile and check that the User Preferences settings are correct.
 - d. Load a bin of E-MEMs and run them to check that they operate correctly.
 - e. Reload your Macros and test their operation.
 - f. Load Source Memory and test their defaults.
19. If there are any problems with any of the restored files, they may have become corrupted and need to be deleted and rebuilt. If a problem file locks the system, you may need to drain NV RAM again to restore system operation, but you will know what file is responsible. Contact Grass Valley Group Customer Service if you need troubleshooting assistance.

Note After NV RAM files are removed, the Still Store will not be prepared for use until NV RAM File Saves are enabled. This may take 2 minutes. If you are using the Still Store or viewing the Stillstore menus at the time of system reset, a **Still store disconnected** message will appear. Once the files have been saved, the Stillstore menu bar will report **Still store – connected**. You will then need to refresh the Stillstore menu manually by making a menu change on the Menu panel.

Verify Switcher Operation

After software installation is complete, verify switcher operation by performing the following checks:

20. Check overall switcher operations. Make sure panel and frame communication is working by checking crosspoint selection from the Main panel and Menu panel DPOPs.
21. Check that your Eng Setup and Daily Setup configuration settings are correct. Older settings should be the same as before, but the new software may have additional settings that will need to be defined.

Note This includes the new Ports & Devices menu in Eng Setup. This menu modifies serial and CPL port configuration. Existing serial and CPL ports in use will need to be reconfigured with this new menu.

22. Check that your effects run properly. Older effects should work with the new software. If there are differences, however, you will need to edit or rebuild the effect with the new software version.

If you experience system errors or unusual switcher behavior, perform the [Drain NV RAM on page 26](#).

If all system operational checks are correct, save the new configuration file and effects to a new Zip disk and store in a safe place. Do not overwrite the files previously saved from the old software. New configuration and effect files will not work with older software.

Backup New Configuration and Effects Files

23. When you are satisfied the configuration works properly, save the new configuration file and effects to a new Zip disk.

CAUTION Do not overwrite the files previously saved from the old software. Newer software files do not work with older software.

24. Label the disk with the version and date and store it in a safe place.
25. Reactivate any virus protection on the Menu panel that may have been disabled at the start of this procedure.
26. The software installation process is complete. System time checks and hardware calibration should be done next.

Verify or Set Date and Time of System Components

After software installation is complete and switcher operation has been verified, verify that your system components (Menu panel, Video Frame, and Main panel) are all set to the correct date and time. Incorrect date and time settings can interfere with the use of Temporary Authorization codes issued for enabling switcher options.

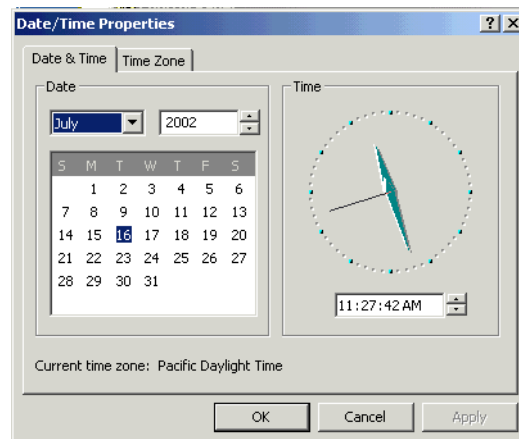
Note These procedures use a keyboard and mouse connected to the Menu panel.

Verify or Set Menu Panel Date and Time

To verify or set the date, time, and time zone on the Menu panel, do the following:

1. Minimize the Zodiak Menu panel application by selecting the **Home** button, then the **Minimize Menu** button in the Home menu to view the Windows 2000 desktop.
2. Under the Windows **Start** button, select **Settings/Control Panel/Date/Time**.
3. This will bring up the Date/Time Properties screen (Figure 25). In the Date & Time tab verify or set the correct time and date.

Figure 25. Verify or Set Windows 2000 Date and Time



4. Under the Time Zone tab, verify or set the correct time zone.
5. Select **OK** and close the window.

Verify or Set Video Processor Date and Time

To verify or set the date and time on the Video Frame, do the following:

1. With the Zodiac Menu panel application minimized, open Windows Internet Explorer on the Menu panel.
2. In the web browser's address field, type the Video Processor's frame IP address, 192.168.54.18 (the factory default), for example.
3. This will bring up the main Zodiac Web Access screen (not shown). Select the link on the left labeled **Frame Date and Time**.
4. In the Frame Date and Time screen (Figure 26), enter the current date and time to match that of the Menu panel

Figure 26. Video Frame Date and Time Screen

Zodiak Web Access

[Software Versions](#)

[Frame Status](#)

[Frame Message Log](#)

[Frame Network Addresses](#)

[Frame Date and Time](#)

[RT Panel](#)

Frame Date And Time

Date

Day : Range 1 to 31

Month : Range 1 to 12

Year :

Time

Hour : Range 0 to 23

Minute : Range 0 to 59

Second : Range 0 to 59

5. When finished, select the **Save New Settings** button.
6. Select the RT Panel link in the Frame Date and Time screen.

Verify or Set Main Panel Date and Time

To verify or set the date and time on the Main (RT) panel, do the following:

1. From the Frame Date and Time screen, select the **RT Panel** link (Figure 26 on page 32).

Note The Main panel (RT) Web Access screens may also be reached by entering the Main panel IP address in the address line of the web browser.

2. This will bring up the main web access screen for the Main panel (not shown). Select the Main Panel Date and Time link.
3. In the Main Panel Date and Time screen (Figure 27), verify or set the correct date and time to match that of the Video Frame and the Menu panel.
4. Select the **Save New Settings** button to finish.
5. Close the web browser.

Figure 27. Verify or Set Date and Time on Main Panel

Zodiak Web Access

[Main Panel Message Log](#)

[Main Panel Network Addresses](#)

[Main Panel Date and Time](#)

[Zodiak Frame](#)

Main Panel Date And Time

Date

Day : Range 1 to 31

Month : Range 1 to 12

Year :

Time

Hour : Range 0 to 23

Minute : Range 0 to 59

Second : Range 0 to 59

Calibrate Lever Arms and Joystick

The Main panel must be booted to a calibration mode to calibrate the Lever Arms and Joystick. If the Main panel hardware is not behaving properly, open the Main panel, set the boot switch to position **9**, then reset the Main panel. After about 30 seconds the panel comes up in calibration mode. Use the M/E 2 E-MEM display and buttons to step through the calibration process. Refer to the *Zodiak Installation and Service Manual* for specific instructions.

Other Zodiac Update Information

Zodiak System Default IP Addresses

The default IP addresses shipped from the factory have been chosen to make Zodiac configuration easy. Numbers were chosen to work with other Grass Valley Group devices in a default standalone network configuration.

Table 1. Default IP Addresses

Device	IP Address	Address Set/Viewed In:
Video Processor Frame	IP Address: 192.168.54.18 (Menu or Facility LAN)	Web browser
	IP Address: 192.168.55.18 (Panel LAN)	
	Gateway IP: 192.168.54.1 (External Gateway)	
Main Panel	Panel IP Address: 192.168.55.8 (Panel LAN)	Web browser or Main Panel Configuration procedure
	Panel Gateway IP: 192.168.55.18 (To Menu Panel)	
	Frame IP Address: 192.168.55.18 (Panel LAN)	
	Menu IP Address: 192.168.54.8	
Menu Panel	IP Address: 192.168.54.8 (Menu LAN)	Windows 2000 Network and Dial Up Connections
	Default Gateway: 192.168.54.1 (External Gateway)	
	Frame IP: 192.168.54.18	Eng Setup – System – Config Menu
	RT Panel IP: 192.168.55.8	
32 Crosspoint Remote Aux panels (when hard reset with the front panel buttons)	V0.0.2a Software: IP Address: 192.168.0.250 Frame IP: 192.168.0.251 Gateway IP: 192.168.0.1 Subnet Mask 255.0.0.0,	Web browser
	V1.6.5 Software: IP Address: 192.168.1.2 Frame IP: 192.168.1.1 Gateway IP: 192.168.1.1 Subnet Mask 255.255.255.0,	Note that 32-Crosspoint Remote Aux panel default IP addresses must be changed to operate with a Zodiac system whose other components are configured with default IP addresses.