

Moving Profiles from one GV File System to another



Version History

Date	Version	Release by	Reason for changes
01-06-2015	1.0	Andy Gingell	Document originated (1 st proposal)
17-12-2016	2.0	Jon Metcalf	Updated for XF re-brand
27-06-2018	2.1	Jon Metcalf	Updated fo V3.0.1.10
14-05-2019	2.2	Jon Metcalf	GV re-brand & update for V4.0.0.20
30-07-2019	2.3	Jon Metcalf	Update for V4.0.1.2
03-08-2020	2.4	Jon Metcalf	Add procedure for Watch Folders

Table of Contents

1. Introduction	4
2. Moving User Profiles, Procedure:.....	4
3. Moving Watch Folder Configurations, Procedure.....	6

1. Introduction

It is often useful to be able to move a User Profile generated on one GV File, to another GV File system. The following procedure explains how to achieve this.

Before attempting to move the Profile, it is recommended that the GV File system that contains the Profiles to be copied, is running the same version of GV File code as the recipient GV File system.

If the GV File system that contains the Profiles to be copied, is down level, the existing User Profiles will be Migrated to the new version of code, when the GV File System is upgraded. This happens automatically as part of the upgrade process.

The procedure may also be extended to include Watch Folder Configurations.

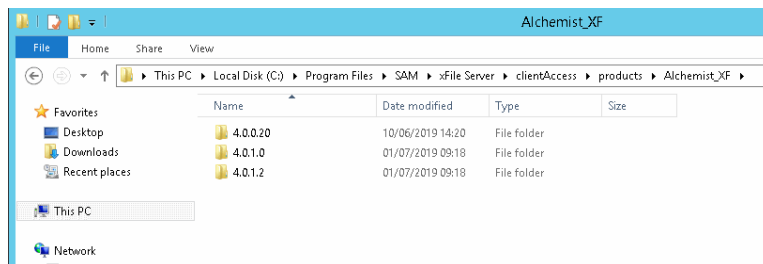
2. Moving User Profiles, Procedure:

1. On the Alchemist File host machine (the machine where the Alchemist File Server is running), navigate to the User Profiles folder:

C:\Program Files\SAM\xFile Server\ClientAccess\products\Alchemist_XF4.0.1.2\user_profiles

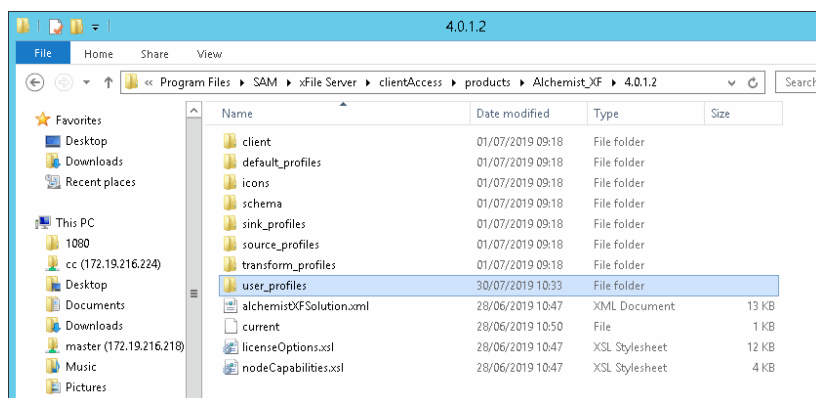
Note that the paths still refer to SAM and xFile – this is normal.

When the folder **Alchemist File** is reached, this folder will contain folders for all the previous versions of Alchemist File installed on the host machine:

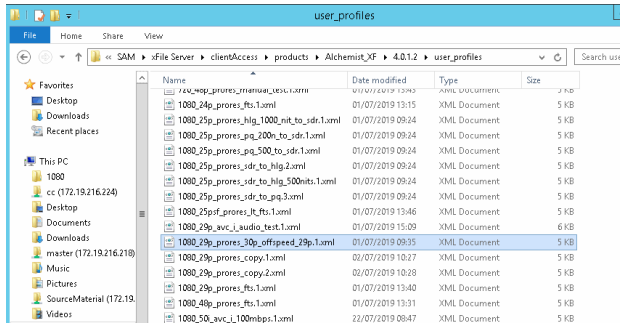


The latest version folder should be selected. In this example the folder 4.0.1.2 would be selected.

Navigate on down to the User Profile folder:



2. Locate the User Profile you wish to export to another system:



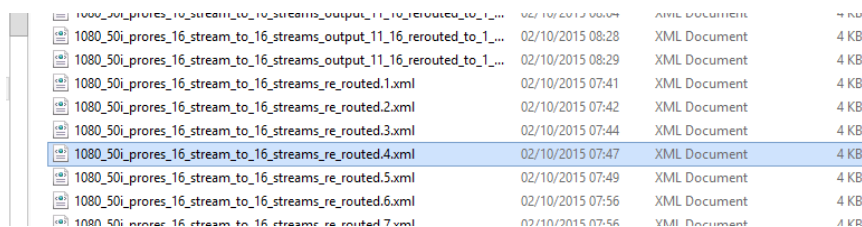
Copy this XML file and save it to a convenient location.

3. Repeat the above procedure, part 1, on the Alchemist File host machine that is to be the recipient of the copied User Profile.
4. Paste the copied User Profile into User Profiles folder.
5. If the GV File Client is running, close it, then re-open.

The copied User Profile will now be available for use on the second Alchemist File system.

The procedure is now complete.

Note: A User Profile that is edited and renamed, when viewed in the User Profile folder, will still retain its original User Profile name. The XML file will not update its name as specified in the Alchemist File Client. The original name will be appended with an iterating numeral each time it is renamed:



In this example, the highlighted User Profile has been edited and renamed an additional three times, but the XML file still retains the original name.

3. Moving Watch Folder Configurations, Procedure.

Note – this procedure will effectively delete any existing Watch Folders present on the recipient GV File system.

1. With regard to the GVFile that the config files are to be copied from, on the host machine (the machine where the GV File Server is running), navigate to the folder:

```
C:\Users\Administrator\AppData\Local\Snell Advanced Media\xFile_Watcher
```

Within this folder there will be a single XML file called:

```
WatchFolders1.xml
```

This XML file contains the configs of all Watch Folders configured on the host machine.

Copy this file to a USB Drive.

2. On the second GV File system, that is to be the recipient of the Watch Folder configurations, locate the same folder:

```
C:\Users\Administrator\AppData\Local\Snell Advanced Media\xFile_Watcher
```

Again, within this folder there will be a single XML file called:

```
WatchFolders1.xml
```

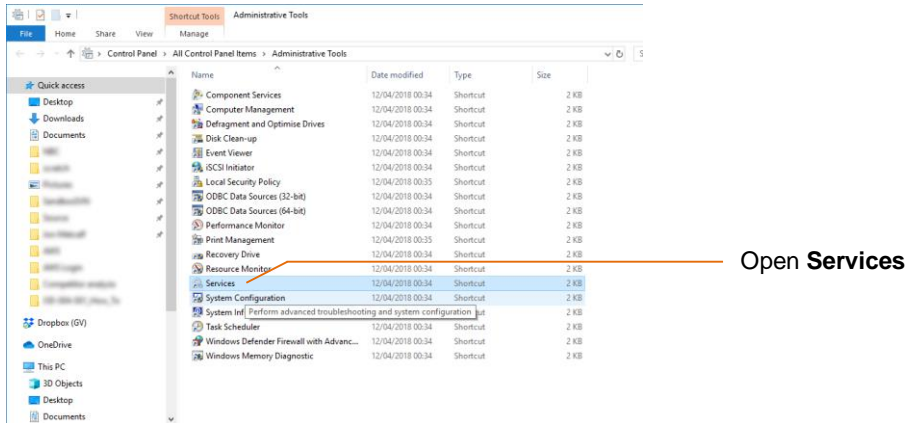
Delete this file.

3. Insert the USB Drive into the recipient GV File host machine.

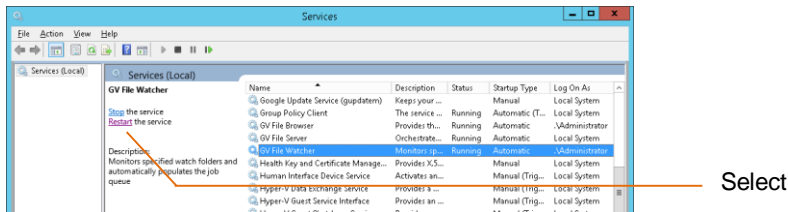
Move the file: `WatchFolders1.xml` from the USB stick, to the xFile Watcher folder (now empty):

```
C:\Users\Administrator\AppData\Local\Snell Advanced Media\xFile_Watcher
```

4. Locate the Services running on the GV file host machine:

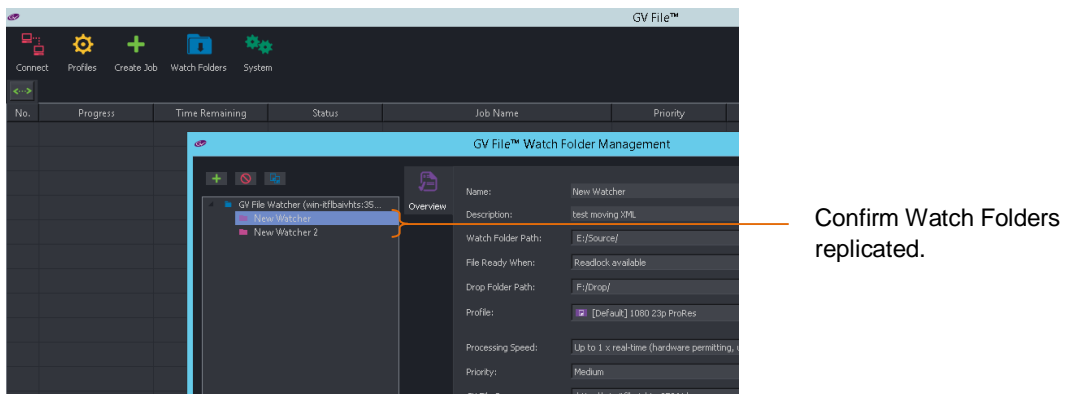


In the list of service running on the GV File host, locate the **GV File Watcher** service:



Restart the **GV Watcher** service.

5. Now in the GV Client, click on **Watch Folders** and confirm that the Watch Folders of the first GV File system are replicated on the second GV File system:



The process is now complete.