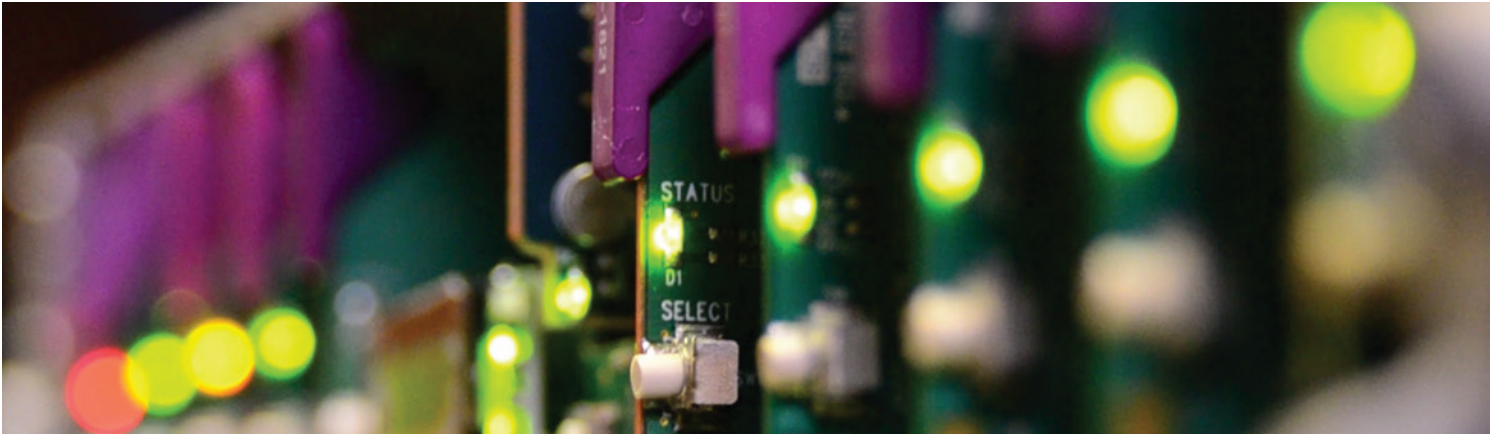


SME-1911

Monitoring Streaming Media Encoder



Space-saving, modular platform for advanced signal processing.

Designed for multiformat video/audio over IP in television facilities, the SME-1911 from Grass Valley, a Belden Brand, is a compact H.264 streaming encoder with 3G/HD/SD SDI input.

Two High Profile H.264 streams are generated simultaneously from the SDI input. The main high resolution stream is ideal for in-house IPTV applications while the low resolution proxy targets streaming and display within a control system network. Both streams are full frame rate and provide high efficiency compression.

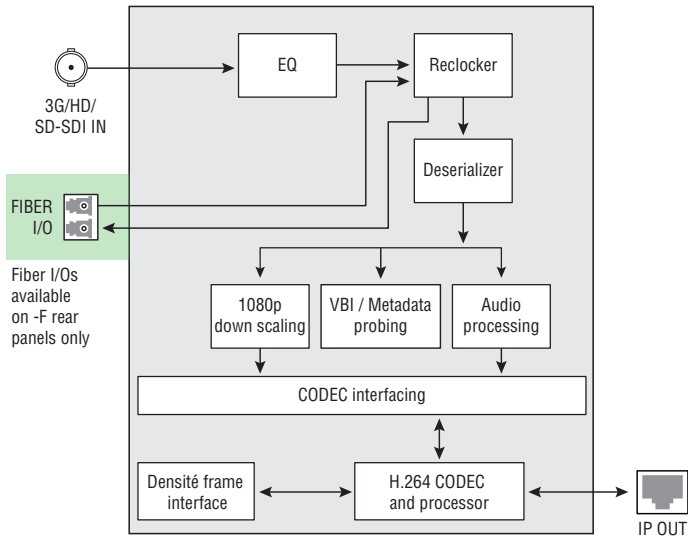
The SME-1911 operates with a wide range of decoders, and offers exceptional space and power efficiency with up to 20 dual stream encoders in a Densité 3 frame configuration.



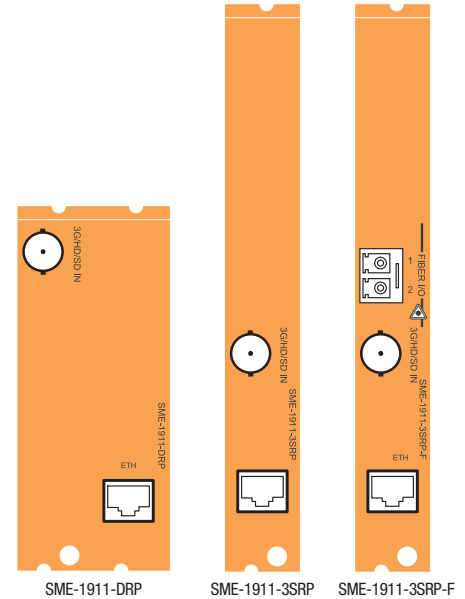
SME-1911 Monitoring Streaming Media Encoder

KEY FEATURES

- Space and power efficient design offers up to 20 streaming encoders per Densité 3 frame
- Integrated fiber I/O using optional SFP module
- Audio encoding of 2 channels of AAC or MPEG-1 Layer II
- Dolby Digital can be passed to the streaming output
- Effective management of embedded audio with:
 - Selection of 2 channel out of 16
 - Selection of 5.1 channel for downmix
- Comprehensive metadata probing includes timecode, closed caption (608, 708), AFD, WSS and teletext
- H.264 high profile video encoding up to level 4.0 for optimized bandwidth utilization
- Full frame rate encoding, with encoded resolutions up to 1080i59.94/50, including 720p59.94/50 standards
- Flexible bandwidth management using fixed presets from 128x96 at 256 Kb/s to 3G/HD at 8 Mb/s
- Dual resolution streaming allows simultaneous output of lower resolution proxy plus high quality main stream
- Operates with wide range of decoders, including STBs, PC clients and Grass Valley's iControl facility monitoring and Kaleido-IP multiviewers
- Supports streaming of MPEG-TS over unicast or multicast using RTP/UDP



SME-1911 Functional Block Diagram



SPECIFICATIONS

Electrical Input

Signal:

3G/HD/SD-SDI SMPTE 424M, 292M, and 259M-C compliant

Supports data rates of: 270, 1483.5, 1485, 2967, 2970 Mb/s

Cable length (Belden 1694A):

3G: 110m (360 ft.) at 3 Gb/s
 HD: 200m (656 ft.) at 1.5 Gb/s
 SD: 400m (1,312 ft.) at 270 Mb/s

Return loss:

>15 dB for up to 1.5 GHz
 >10 dB from 1.5 GHz to 3 GHz

IP Input/Output

Quantity: 1

Connector: 100 Mb/s Ethernet with RJ45 connector IEEE 802.3

Processing Performance: IP Streaming

Signal path: 8 bits

Compression: H.264 high profile (level 4.0)

Frame rate: Full rate of input signal - except 3G is half the rates

Bitrate: 256 Kb/s to 8 Mb/s

Audio encoding: AAC, MPEG-1 Layer II

Electrical

Power: 9W

ORDERING

Densité 2 Frame

SME-1911

SME-1911-DRP

Description

Streaming media encoder

Densité 2 double rear connector panel

Fiber Option

SFP-R-LC

SFP-T-S13-LC

Single fiber Rx (input) cartridge with LC/PC connector

Single fiber Tx (output) cartridge at 1310 nm with LC/PC connector

Densité 3 Frame

SME-1911-3RU

SME-1911-3SRP

SME-1911-3SRP-F

Description

Streaming media encoder

Densité 3 single rear connector panel

Densité 3 single rear connector panel with fiber option support

Remote Control

iControl, iControl Solo



GVB-1-0418D-EN-DS

WWW.GRASSVALLEY.COM

Join the Conversation at **GrassValleyLive** on Facebook, Twitter, YouTube and **Grass Valley - A Belden Brand** on LinkedIn.



Belden, Belden Sending All The Right Signals and the Belden logo are trademarks or registered trademarks of Belden Inc. or its affiliated companies in the United States and other jurisdictions. Grass Valley, Densité and iControl are trademarks or registered trademarks of Grass Valley, Belden Inc., Grass Valley and other parties may also have trademark rights in other terms used herein.

Copyright © 2015-2016 Grass Valley USA, LLC. All rights reserved. Specifications subject to change without notice.