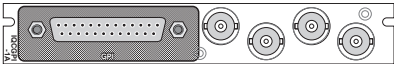


IQGPI00-04

Configurable General Purpose Interface



The IQGPI00/01/03/04 is a configurable control module for external devices and all RollCall compatible products.

This module uses the latest intelligent control software developed from the RollPod technology from Grass Valley, a Belden Brand. This will allow the GPI to become a central controller for the most demanding network configuration. GPIs can be assigned to RollCall commands as before, but now with the aid of a PC program (RollPod Designer) the GPI can literally interact with the RollCall network environment, unleashing complex interactivity between external devices and/or other Grass Valley products.

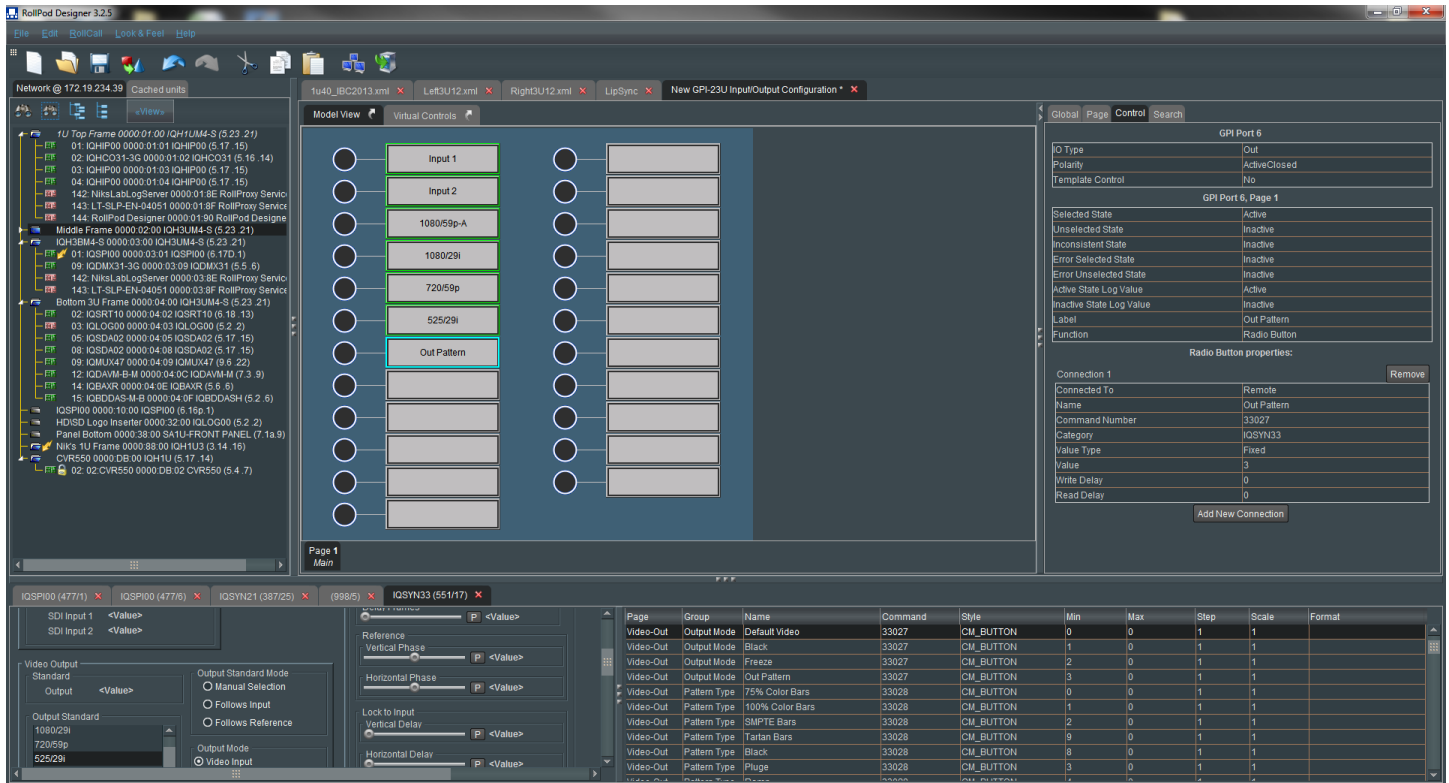
Why should you choose this module?

- Flexible bridging between RollCall and third-party products to provide comprehensive control and tally solutions
- Multiple events to multiple units can be initiated from a single GPI trigger
- External GPI inputs can be configured to trigger multiple RollCall events to multiple units on the RollCall network
- Configuration via the RollPod Designer GUI allows you to browse the RollCall network, select controllable devices then drag and drop the required functionality straight onto the relevant RollPod device from a simple software user interface allowing control of the functions on your Grass Valley equipment. RollPod Designer is provided with the free RollCall Lite download available from the Grass Valley website

KEY FEATURES

- Control products on the RollCall Network via external events, or vice versa
- 11 optically isolated I/O interfaces, plus 1 which is non-isolated (IQGPI01, 03, 04)
- Outputs from IQGPI03/4 can switch up to $\pm 48V$ at currents up to $\pm 1A$
- 23 GPI non-isolated unbalanced I/O interfaces (IQGPI00)
- Customizable solution allows programming of multiple events from a single trigger
- Outputs may drive relays or LEDs
- Direct connection to the RollCall network
- 200 mA 5V power supply available on connector

IQGPI00-04 Configurable General Purpose Interface



SPECIFICATIONS

Inputs and Outputs

GPI
User power supply

Indicators

Data received
PSU overload

Additional RollCall Functions

Configure GPI
GPI input triggers RollTrack output(s)
GPI input triggers RollCall logging messages
RollTrack input triggers GPI output, plus additional RollTrack outputs

General Specifications

Inputs/Outputs
IQGPI00 Connector/format: 25-way D-Type, 23 unbalanced optically isolated
IQGPI01/03/04 Connector/format:
25-way D-Type, 11 balanced optically isolated
25-way D-Type, 1 unbalanced optically isolated

Input Specification

Voltage limits: -5V to +30V
Logic 1: +2.5V to +30V

Output Specification

Maximum on current: 50 mA (1A – IQGPI03, IQGPI04)

Power Source

Voltage: 5V ± 0.5V
Maximum current: 100 mA
Maximum load: Short-circuit

Power Consumption

Module power consumption:
2.5W Max (A Frames)
2.0 PR Max (B frames)
5W Max (IQGPI03, IQGPI04)

EMC Performance Information

Environment: Commercial and light industrial E2
Peak mains inrush current following a 5 second mains interruption: No mains input
Performance information: No performance degradations or cable length limitations

ORDERING

IQGPI0015-1A

Configurable General Purpose Interface

1x D25, 23x Unbalanced GPI input or output ports, 1x RollNet BNC

IQGPI0115-1A

Configurable General Purpose Interface

1x D25, 12x GPI input or output ports (11 Balanced, 1 Unbalanced), 1x RollNet BNC

IQGPI0315-1A

Configurable General Purpose Interface

1x D25, 12x GPI High Power Output Ports (11 Balanced, 1 Unbalanced), 1x RollNet BNC

IQGPI0415-1A

Configurable General Purpose Interface

1x D25, 12x GPI High Power Relay Output Ports (11 Balanced, 1 Unbalanced), 1x RollNet BNC
For more details on enclosure types please refer to Frames and Hardware section.



WWW.GRASSVALLEY.COM

Join the Conversation at [GrassValleyLive](#) on Facebook, Twitter, YouTube and [Grass Valley - A Belden Brand](#) on LinkedIn.



www.grassvalley.com/blog

GVB-1-0756A-EN-DS

Belden, Belden Sending All The Right Signals, the Belden logo, Grass Valley and the Grass Valley logo are trademarks or registered trademarks of Belden Inc. or its affiliated companies in the United States and other jurisdictions. Grass Valley products listed above are trademarks or registered trademarks of Belden Inc., GVBH Holdings S.A.R.L. or Grass Valley Canada. Belden Inc., GVBH Holdings S.A.R.L., Grass Valley Canada and other parties may also have trademark rights in other terms used herein.

Copyright © 2018 Grass Valley Canada. All rights reserved. Specifications subject to change without notice.