

IQLAM00

3G/HD/SD-SDI Logo Assurance Module

The IQLAM00 detects on-air logos and generates graphical alarms in case of a logo absence or mismatch, ensuring confidence your channel branding remains correct during live broadcasts.

The IQLAM00 from Grass Valley provides a fast and efficient way to monitor channel branding by detecting an on-air logo and comparing it with a stored logo signature file. Multiple logo files can be stored on the card and loaded via triggers from the automation system as required to provide confidence that the channel branding is correct. Similarly, the IQLAM00 can feed back its logging and reporting information for the automation system's "as run log," enabling any anomalies to be captured for later analysis. It does this by generating and comparing region-specific video signatures from the SDI stream and its stored logo signature file then reporting back the detection confidence value and an alarm should there be a mismatch.

Being fully compatible with Grass Valley's RollMap graphical monitoring software means that logo detection confidence values and alarms from across the system can be shown in a single display graphic providing confidence at a glance.

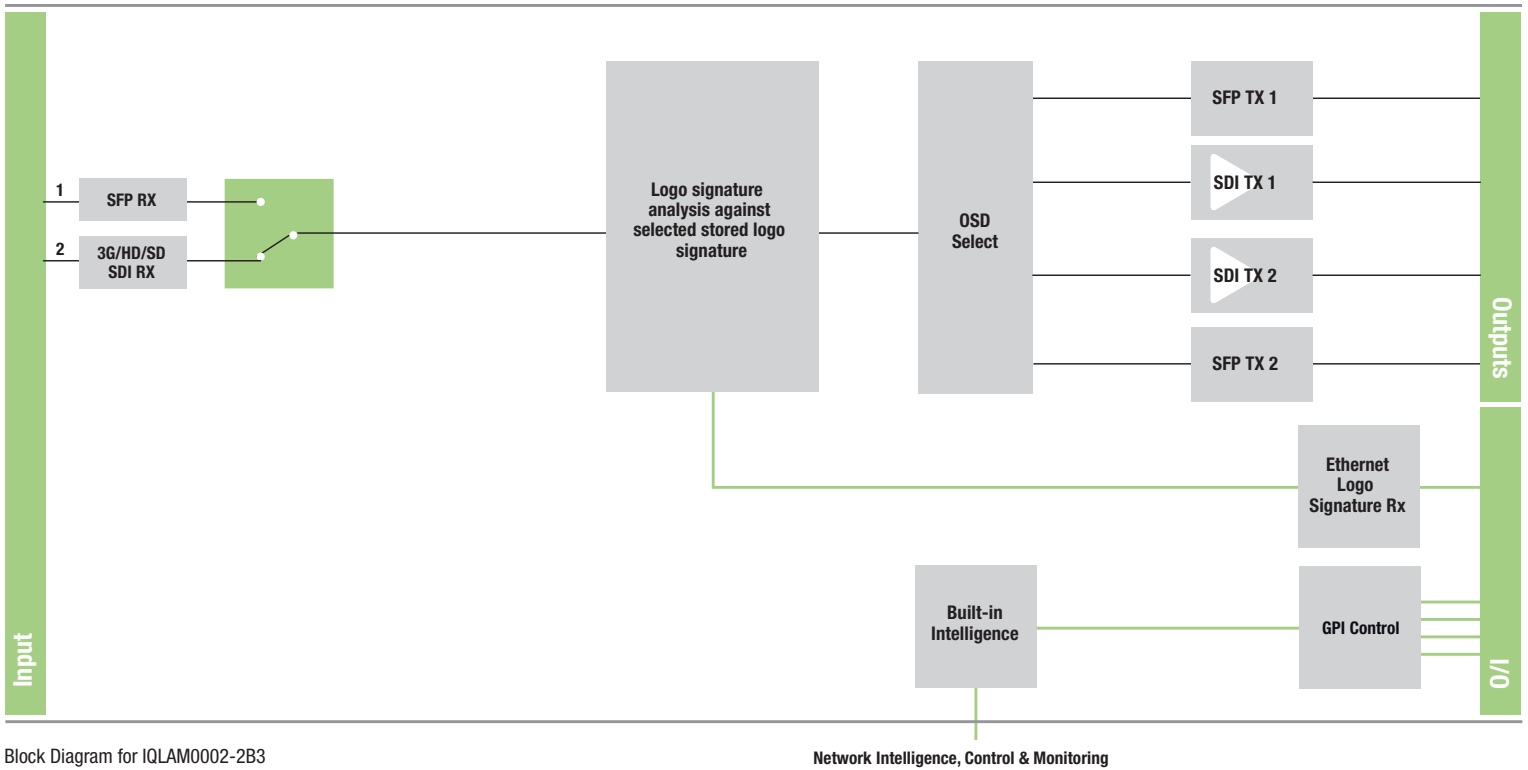
Alternatively, native SNMP support enables the IQLAM00 to be integrated with other network management or automation systems.

Why should you choose this module?

- Provides confidence that channel branding remains correct during live operations
- On-screen display available for logo detection region setup and confidence reporting
- With direct links to Grass Valley's network management and automation systems via RollCall, confidence values and alarms from across the system can be shown in a single display graphic providing confidence "at a glance." This link also enables query logos to be changed should they be different between programs by recalling memories on the module and specifying the detection periods to avoid false alarms for periods when the logo is not on screen, such as during advertisements
- Alternatively, APIs and native SNMP support enables the IQLAM00 to be integrated with other network management or automation systems

KEY FEATURES

- Detects the presence of logos in 3G/HD/SD-SDI video streams with reference to a stored "target" logo signature
- Can report presence or absence of target logo using the RollCall control and monitoring system, or via SNMP
- Multiple logos can be downloaded to the card simply via RollCall, and stored for recall during playout
- Standards supported:
 - 3G-SDI to SMPTE ST 424/425 level A compatible
 - HD-SDI to SMPTE ST 292/274/296
 - SD-SDI to SMPTE ST 259-C
 - Fiber to SMPTE ST 297-2006
- SFP cage enables I/O over fiber or additional SDI via HD-BNC
- 16x user and logo memories, save/recall/rename
- RollTrack triggers for logo presence and absence created to enable action by other RollTrack enabled units
- RollCall control and monitoring compatible with standard logging and reporting features



Block Diagram for IQLAM0002-2B3

SPECIFICATIONS

Inputs and Outputs

Signal Inputs

SDI inputs: 1x

Electrical:

- 3 Gb/s SDI, SMPTE ST 424 (425-level A)
- 1.5 Gb/s HD-SDI, SMPTE ST 292
- 270 Mb/s SDI, SMPTE ST 259-C

Connector/format: BNC/75Ω panel jack on standard GV connector panel

Input cable length:

- Up to 80m Belden 1694A @ 3 Gb/s
- Up to 150m Belden 1694A @ 1.5 Gb/s
- Up to 250m Belden 1694A @ 270 Mb/s

Fiber Signal Input

Inputs: 1

Optical: 3 Gb/s HD-SDI, 1.485 Gb/s HD-SDI or 270 Mb/s SD-SDI

Connector/format: LC singlemode

Standard: SMPTE ST 297-2006

Signal Outputs

SDI output: 2 with selectable logo region OSD

Electrical:

- 3 Gb/s SDI, SMPTE ST 424
- 1.5 Gb/s HD-SDI, SMPTE ST 292
- 270 Mb/s SDI, SMPTE ST 259-C

Connector/format:

- BNC/75Ω panel jack on standard GV connector panel
- HD/SD-SDI outputs 7x (1 selectable main or monitoring)

Return loss: >-15 dB to 1.5 GHz, better than -10 dB to 3 GHz

Fiber Signal Output

Outputs: Up to 2*

Optical: 3 Gb/s HD-SDI, 1.485 Gb/s HD-SDI or 270 Mb/s SD-SDI

Connector/format: LC singlemode

Conforms to SMPTE ST 297-2006

*Note: Optical I/O and control dependent on type of SFP module fitted

Control Interface

GPI: 2x closing contact I/O interface (ST) (rear panel dependent)

Electrical: 10/100base-T Ethernet to IEEE 802.3

Connector/format: RJ-45 panel jack on standard Grass Valley connector panel

Controls

Indicators

Power: OK (Green)

CPU: OK (Flashing)

Content Status

Summary:

- OK (Green)
- Warning (Yellow)
- Error (Red)

Functions

Output routing:

- Video Input Program
- Pattern
- Mute
- Video Input with OSD

Detection region: Manual Left, Right, Top, Bottom adjustment (%) controls

Preset region recalls: Top Left, Top Right, Bottom Left, Bottom Right

Match Results

Match level value (%)

Match level temporal counter: Fail Level (%), Fail, Warning, Fail Hold (in seconds)

Match setup: Run/Stop

Alarm status: Logo missing, logo present

Mode selection: Low Translucency, High Translucency, Opaque 1, Opaque 2

Logo File Select: Select/next logo signature file from list, delete logo signature file from list

Other Controls

GPI/O 1&2: Input, output

GPI input low/high select: RollTrack Only, Select Channel 1, Logo Match Active, Logo Match Stopped, Display Memories 1-16, User Memories 1-16

GPI output source: RollTrack Only, Select Channel 1 selected, Input Channel 1 OK, Logo Match Active, Logo Match Stopped, Display Memories 1-16, User Memories 1-16

Pattern select: RP219, Checkfield, 75% Color Bar

Default output: Video input, black, pattern, mute

User memories: 16x Save/Recall/Rename

Display memories: 16x Save/Recall/Rename

Reporting & logging: Input loss; input line standard; logo detected state, logo detection confidence (%), logo signature filename used, Logo Alarm Mode (logo missing, logo present), GPI/O 1&2 state, SFP state

Information window: Video input status, SFP status

RollTrack index: Up to 32 RollTrack destinations

RollTrack sources: Unused, Input 1 state & Std, GPI/O 1&2 state, Display Memory 1-16, User Memory 1-16

Factory default: Resets all module settings to factory specified default values and clears memories

Default settings: Resets all module settings to factory specified defaults but does not clear memories

Restart: Software restart of the module

Module information:

Reports following module information: Software version, Serial number, Build number, KOS version, Firmware version, PCB version, Rear ID, Product name

Electrical

Standards Supported

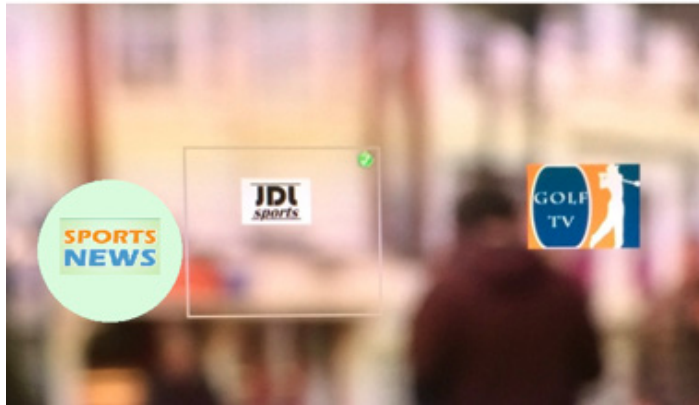
1080/50p, 1080/59p, 1080/60p, 750(720)/60p, 750(720)/59p, 750(720)/50p, 1125(1080)/29i, 1125(1080)/30p, 1125(1080)/29p, 1125(1080)/25i, 1125(1080)/25p, 1125(1080)/24p, 1125(1080)/23p, 525(480)/29i, 625(576)/25i

Power Consumption

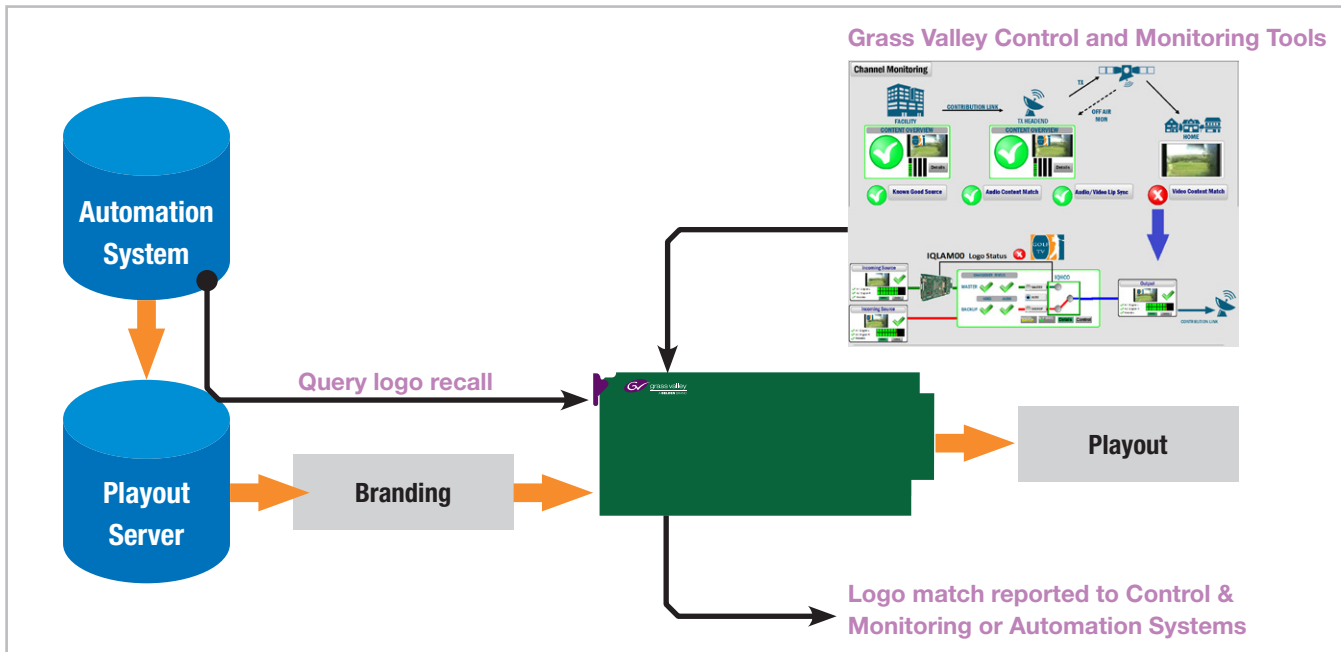
Module power consumption:

14 PR (B Frames)

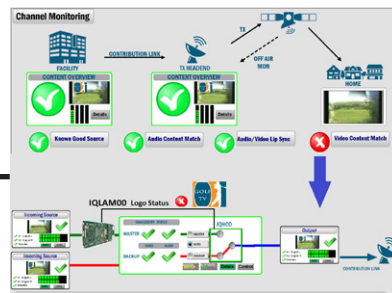
Signature of Query Logo



On-screen display for logo detection region setup and confidence reporting — logo detected OK within region.



Grass Valley Control and Monitoring Tools



ORDERING

IQLAM0000-1B3

3G/HD/SD-SDI Logo Assurance Module. 1 SDI input, 2 SDI outputs, 2 GPIs, 1 SFP interface, Ethernet I/O.
For more details on enclosure types please refer to the IQ Modular Enclosures datasheet.

SFP Options

- FC1-13T1**
Single 1310 nm fiber Tx
- FC1-15T1**
Single 1550 nm fiber Tx
- FC1-R1**
Single fiber Rx

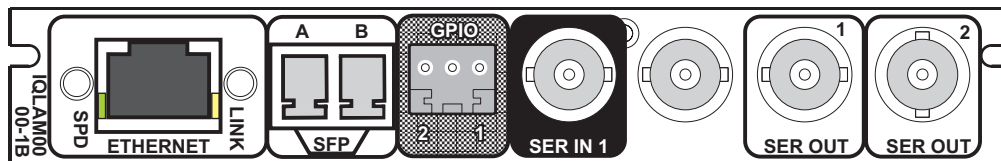
FC1-13TR

Fiber transceiver 1310 nm Tx/Rx

FC1-HDBTR

HD-BNC transceiver

Note: SFP type must be ordered in addition to the module.



GVB-2-0856A-EN-DS



WWW.GRASSVALLEY.COM

Join the Conversation at **GrassValleyLive** on Facebook, Twitter, YouTube and **Grass Valley - A Belden Brand** on LinkedIn.



www.grassvalley.com/blog

This product may be protected by one or more patents. For further information, please visit: www.grassvalley.com/patents.

Belden®, Belden Sending All The Right Signals®, the Belden logo, Grass Valley®, GV® and the Grass Valley logo are trademarks or registered trademarks of Belden Inc. or its affiliated companies in the United States and other jurisdictions. Grass Valley products listed above are trademarks or registered trademarks of Belden Inc., GVBH Holdings S.A.R.L. or Grass Valley Canada. Belden Inc., GVBH Holdings S.A.R.L., Grass Valley Canada and other parties may also have trademark rights in other terms used herein.

Copyright © 2019 Grass Valley Canada. All rights reserved. Specifications subject to change without notice.