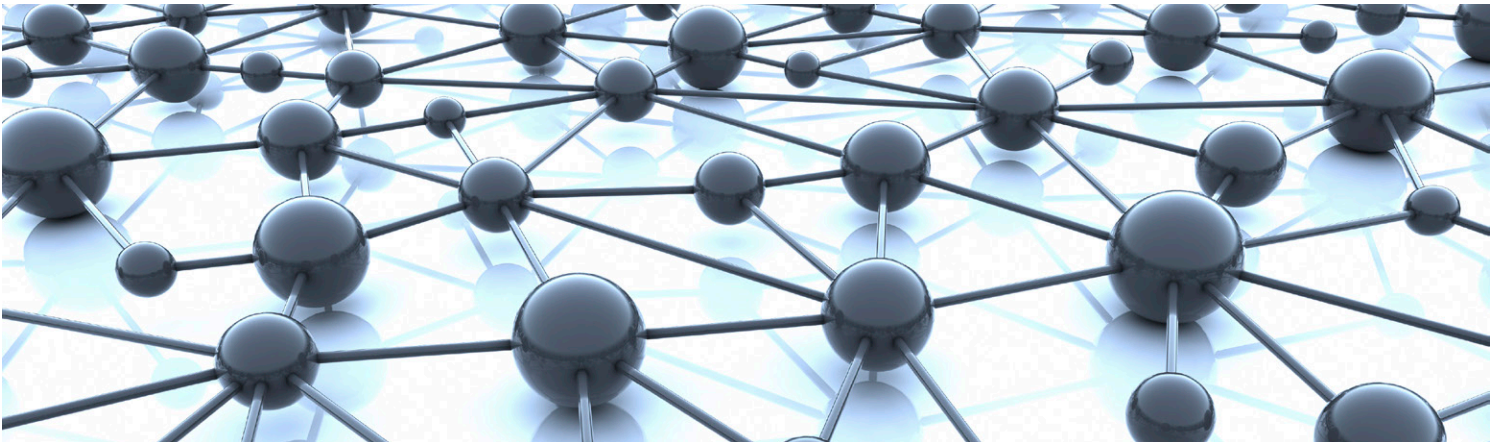


IQSDA32

3G/HD/SD-SDI Re-clocking Distribution Amplifier with RollCall



Provides seven equalized and re-clocked outputs of the input in a single width package, with the option of ordering 3G/HD/SD or HD/SD with the ability to upgrade to add 3G at a later time.

The IQSDA32 from Grass Valley, a Belden Brand, is a distribution amplifier for HD-SDI 3 Gb/s, 1.5 Gb/s or 270 Mb/s SD-SDI signals providing seven equalized and re-clocked outputs of the input in a single width package. Its 80m 3G, 180m HD input equalization performance and non-re-clocking distribution of wide-band signals make it ideal for all distribution applications. For HD/SD only applications an HD/SD-SDI version is available, with an option to upgrade firmware for 3 Gb/s operation when required.

Why should you choose this module?

- Space efficient design with seven outputs of the input in single width, allowing 16 modules in 3 RU or four in 1 RU
- Useful for critical installation thanks to outstanding input equalization capability
- Operation at SMPTE ST 424 data rates allows future proof system design
- Emergency input to output bypass option allows added protection for critical signal paths or 24/7 operations

KEY FEATURES

- Intelligent 3 Gb/s SDI, HD-SDI and SD-SDI re-clocking distribution amplifier
- Will distribute DVB-ASI and other wide-band signals
- Equalizes up to 80m at 3 Gb/s, 180m at 1.5 Gb/s and more than 350m at 270 Mb/s when using Belden 1694A cable
- Standards supported:
 - 3G-HD to SMPTE ST 424
 - HD-SDI to SMPTE ST 292
 - SD-SDI to SMPTE ST 259-C
 - DVB-ASI
- Emergency input bypass option enables the SDI input signal to be passed through to SDI output 2 in the event of frame power failure or module removal
- RollCall monitoring allows all signal paths to be managed

IQSDA32 3G/HD/SD-SDI Re-clocking Distribution Amplifier with RollCall

SPECIFICATIONS

Inputs and Outputs

Signal Input

SDI input: 1 x

Input cable length:

Up to 80m Belden 1694A @ 3 Gb/s

Up to 180m Belden 1694A @ 1.5 Gb/s

>350m Belden 1694A @ 270 Mb/s

Signal Outputs

SDI outputs: x7 (1, 3, 5, 7 DVB-ASI compatible)

Controls

Indicators

Power: OK (Green)

CPU: OK (Green flashing)

Input: OK (Green), Bypass (Orange), Loss (Red)

RollCall Functions

Input select: Auto, 3G, HD, SD, DVB-ASI, Bypass (reclocking off)

Input status: Present, loss/unknown, data rate

Logging:

Input type

Input data rate

Input present

Input error

Input loss

RollTrack controls: On/off, index, source, address, command, status, sending

RollTrack outputs:

Unused

Input present

Input rate unknown

Input loss

Input 3G

Input HD

Input SD

Other Controls

User memories: Name, save and recall 16 user memories

General Specifications

Electrical:

3 Gb/s SDI, SMPTE ST 424

1.5 Gb/s HD-SDI, SMPTE ST 292

270 Mb/s SDI, SMPTE ST 259-C/DVB-ASI

Connector/format: BNC/75Ω panel jack on standard Grass Valley connector panel

Return loss: >-15 dB (270 Mb/s, 1.5 Gb/s)

>-10 dB (3 Gb/s)

Output jitter: SD-SDI 0.2 UI (10 Hz) / 0.2 UI (1 kHz), 3G/HD-SDI 1.0 UI (10 Hz) / 0.2 UI (100 kHz)

Power Consumption

Module power consumption:

3 W max (A frames)

3 PR (B frames)

With relay rear: 3.5W max.

ORDERING

IQSDA3247-1A3, IQSDA3247-1B3

3G/HD/SD-SDI Re-clocking Distribution Amplifier. 1 input, 7 outputs.

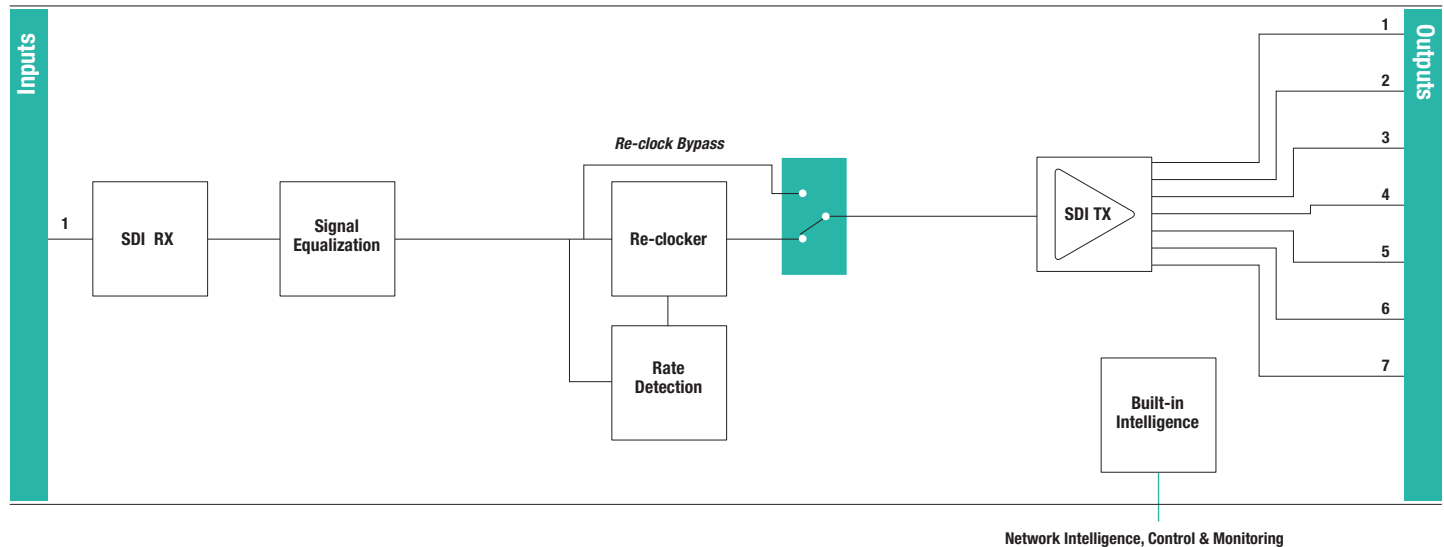


IQSDA3261-1A3, IQSDA3261-1B3

3G/HD/SD-SDI Re-clocking Distribution Amplifier with Relay Bypass. 1 input, 6 outputs.



For more details on enclosure types please refer to the IQ Modular Enclosures datasheet.



Block Diagram for IQSDA3247-1A3



WWW.GRASSVALLEY.COM

Join the Conversation at **GrassValleyLive** on Facebook, Twitter, YouTube and **Grass Valley - A Belden Brand** on LinkedIn.



www.grassvalley.com/blog

GVB-1-0770A-EN-DS

This product may be protected by one or more patents. For further information, please visit: www.grassvalley.com/patents.

Belden®, Belden Sending All The Right Signals®, the Belden logo, Grass Valley® and the Grass Valley logo are trademarks or registered trademarks of Belden Inc. or its affiliated companies in the United States and other jurisdictions. Grass Valley products listed above are trademarks or registered trademarks of Belden Inc., GVBB Holdings S.A.R.L. or Grass Valley Canada. Belden Inc., GVBB Holdings S.A.R.L., Grass Valley Canada and other parties may also have trademark rights in other terms used herein.

Copyright © 2019 Grass Valley Canada. All rights reserved. Specifications subject to change without notice.