

RCP-200 Densité Remote Control Panel



Advanced Remote Control Panel for Densité Cards, Kaleido Multiviewers and NVISION/Third-party Routing Switchers

Space-saving, modular platform for advanced signal processing.

The Grass Valley RCP-200 advanced remote control panel for Densité cards, Kaleido multiviewers and NVISION/third-party routers provides a highly intuitive graphical interface. It simplifies video/audio signal processing and control in both single and multiuser environments.

The 3 RU rack-mounted panel features two large touchscreen displays for easy readability and quick adjustments. The left screen is dedicated to device selection and router control while the right screen is reserved for parameter adjustments of the selected device. The high-resolution screens and color graphics allow a wide range of information to be displayed simultaneously. Eight rotary controls are assigned to parameters to minimize menu navigation, and provide an ergonomic interface to the user.

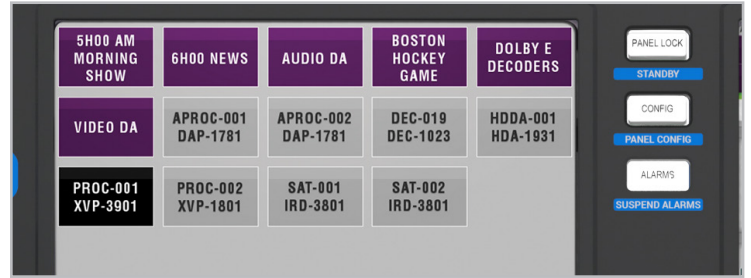
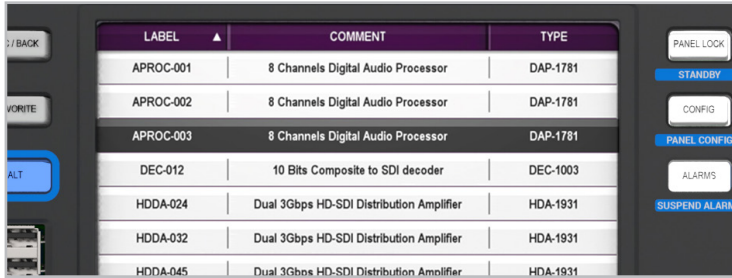
The panel can be used alongside the iControl monitoring and control system, with synchronized control between the systems, or as a standalone device for direct control of multiple types of devices including Densité cards, multiviewers or routing switchers

KEY FEATURES

- Dual, large color touchscreen displays provide rapid and easy control of complex signal processing infrastructures
- Supports most Densité Series cards, Kaleido products and NVISION/third-party routers
- Four navigation methods are provided: List, Groups, Router and a Customizable view
- Access to parameter categories using touchscreen buttons
- 8 rotary/push controls for easy and precise parameter adjustment with ballistics modeling
- Synchronizes automatically with other RCP-200 panels and the iControl signal monitoring system in multiuser environments
- Lockable controls to prevent accidental parameter changes
- Hierarchical visual notification of out-of-comfort zone values
- Provides direct access via push-buttons to station default settings for easy restore operations
- Entire Panel Lock/Unlock button
- Very quiet operation
- 3 RU rack mount design (rack mount ears included)
- Optional desk mount kit or rack mount bracket (4 RU) that provides 8 possible viewing angles in 6° steps for up to 42°
- Optional redundant power supply for mission critical uses

Using the RCP-200 For Fast Control

The left pane of the control panel provides navigation views to guide the user efficiently through multiple Densité cards, routers or multiviewers. It offers three different ways for accessing a card: the List View, the Group View and the Router View.

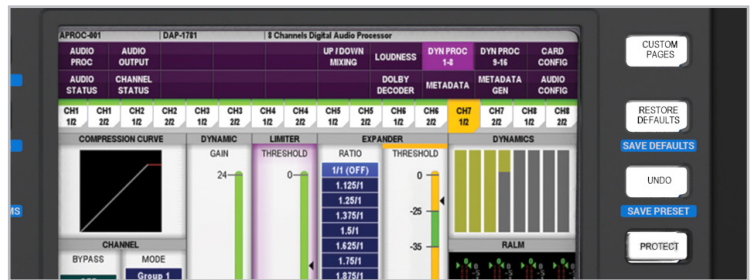
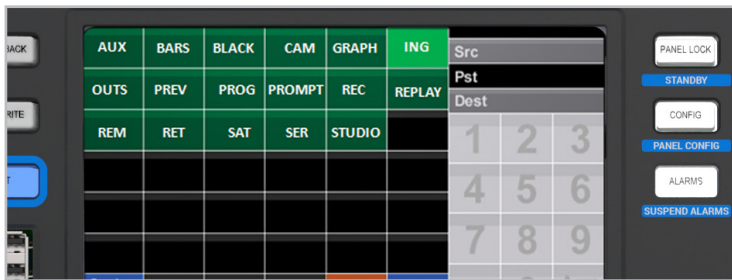


The List View

- Cards under control are clearly visible from the list
- Each column can be sorted up or down by touching the title zone
- Filters can be applied recursively to accelerate card selection
- Controllable devices filtering can be enabled to speed up navigation and declutter the navigation screen

The Groups View

- Containers can be created to help organize equipment pool following user's own logic
- Cards can also be mixed with containers in any Groups view
- Button illumination adapts dynamically according to control options



Advanced Control for Multiple Users

The Router View

- Prefixes are used in a Router navigation mode to group similar types of equipment or locations within an installation
- Intuitive numeric keypad guides the user through the process of inputting a numeral by highlighting the valid entries as they type

This view can be used to select devices or to control routers. When router control mode is enabled, this view also gives direct access to four user defined destination buses through four soft keys.

The Control View

Once a card has been selected using one of the navigator views, the controls for this card are presented on the right LCD screen using the Control View.

- Controls are grouped by categories and pages for quick access to a specific parameter
- Binary selections can be toggled simply by pressing on the associated control knob
- Knobs can be used to select an item from a list of possible choices
- Tabs are used to select pages within a category
- Various monitoring zones are provided to help the user monitor the impact of an adjustment
- Analog type of control with intuitive turn-knob operation and direct entry box
- Vertical sliders with color coding visually informs the user when a parameter is out of the comfort zone. This information can be relayed to upper levels for quick identification and access to these parameters

THE RCP-200 CAN BE USED TO CONTROL A VARIETY OF DEVICES FOR BOTH LARGE AND SMALL INSTALLATIONS

Benefits

- Enables advanced functionalities provided by application server — such as proxy streaming
- Concentrates control of routers and Densité cards onto applications server, therefore limiting network traffic and allowing shared access to common resources
- Permits other types of client applications to access resources — such as iCWeb, iNavigator or Matrix — for alternate workflows

Required Ordering Items

- RCP-200
- IC-SW-V8
- IC-HW-R340XL
- IC-ROUTER-CLIENT

SPECIFICATIONS

Displays (2): 178 mm (7 in.), 800 X 480 pixels, 262,144 colors

Button illumination: RGB LED driven back light

Connectivity:

- 4x USB 2.0 ports (2 rears, 2 fronts)
- 1x 10/100 BASE-T Ethernet port
- 1x RS-422 port
- 4x GPI inputs or outputs (programmable)
- Dual 12 VDC input terminals for redundancy

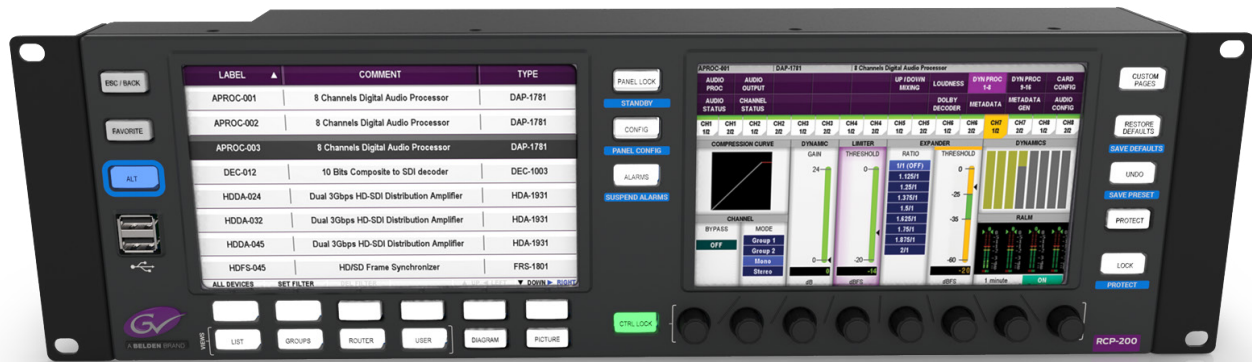
Power: 45W

Weight: RCP-200: 2.8 kg (6.16 lbs.)

RCP-200-PSU: 0.4 kg (0.9 lbs.)

Rack mount kit: 1.18 kg (2.6 lbs.)

Desk mount kit: 953g (2.1 lbs.)



ORDERING

RCP-200

Advanced remote control panel

IC-HW-R340XL

iControl 1 RU server with dual power supplies, 4-core Intel CPU, dual 480 GB SSD with RAID, and 64 GB RAM

IC-VM-V8

iControl version 8 monitoring and control application on a virtual machine

IC-ROUTER-CLIENT

iControl router control software

Notes: RCP-200 ships with one RCP-200-PSU.

Options

RCP-200-RMK

RCP-200 4 RU rack mount kit

RCP-200-PSU

RCP-200 redundant external power supply unit

RCP-200-DMK

RCP-200 desk mount kit

Note: See Applications section for required ordering items based on application.



WWW.GRASSVALLEY.COM

Join the Conversation at **GrassValleyLive** on Facebook, Twitter, YouTube and **Grass Valley** on LinkedIn.



www.grassvalley.com/blog

This product may be protected by one or more patents. For further information, please visit: www.grassvalley.com/patents.

Grass Valley®, GV® and the Grass Valley logo are trademarks or registered trademarks of Grass Valley USA, LLC, or its affiliated companies in the United States and other jurisdictions. Grass Valley products listed above are trademarks or registered trademarks of Grass Valley USA, LLC or its affiliated companies, and other parties may also have trademark rights in other terms used herein.

Copyright © 2021 Grass Valley Canada. All rights reserved. Specifications subject to change without notice.