

EdgeVision

Multichannel Quality of Experience Monitoring



Stay in control with customizable monitoring and interfaces.

EdgeVision from Grass Valley offers richly featured, Quality of Experience (QoE) monitoring across an entire network for satellite/cable/IPTV operators and broadcasters, using high-performance video/audio streaming and extensive signal probing. By remotely monitoring signals received at set-top boxes, it allows operators to accurately see and hear the quality of signals received in viewers' homes.

EdgeVision can provide both low-quality and high-quality audio/video streams, with fully selectable resolution and bitrates. This allows remote

monitoring of signals over a LAN or WAN, without a negative impact on network capacity.

EdgeVision can operate as a standalone monitoring system, using the EdgeVision Player multiviewer, or it can operate as a high performance set-top box probe with the iControl and Kaleido-IP monitoring systems.

KEY FEATURES

High-quality audio/video streaming

- High-efficiency H.264 video streaming for remote viewing
- High-quality stereo or Dolby Digital audio streaming with acoustic monitoring and audio metering
- Full flexibility in streaming resolution, quality, frame rate and bit rate
- Each EdgeVision input features both a high-resolution and a low-resolution streaming encoder
- Streams to EdgeVision Player, iControl, Kaleido-IP multiviewer or generic players like VLC

Full compatibility with HD and SD Set-top boxes

- Features a full complement of connections for digital and analog audio/video signals, including high-definition video and 5.1 audio signals
- Optional Dolby Digital decoding for multichannel monitoring and Dolby Metadata extraction and analysis, including dialnorm

Advanced signal quality probing and alarming

- Performs detection and alarms on video faults, including freeze, black and macro-block detection
- Audio probing includes silence detection, overload, mono and out of phase
- Metadata probing includes closed captioning*, AC-3 metadata
- Optionally performs audio loudness monitoring
- Detected alarms can be logged by iControl, and channel performance can be assessed

STB remote control and multichannel cycling

- Infrared port for remote control and channel selection, including infrared learning capabilities
- Users can remotely control STBs to access interactive and VOD services
- Supports control of all leading models of STBs and DVRs from several manufacturers
- EdgeVision Player allows parallel infrared control of multiple STBs

Available with SDI outputs

- HD/SD-SDI outputs are available on single, dual and quad-input models
- Provides embedding of analog or Dolby Digital AC-3 digital audio into SDI
- SDI output signal follows input selection

Robust, compact design

- Available in dual and quad input configurations
- NEBS compliant for high reliability
- Compact unit 1 RU high, 330.2 mm (13 in.) deep
- Available with redundant power supply

Easy and secured deployment

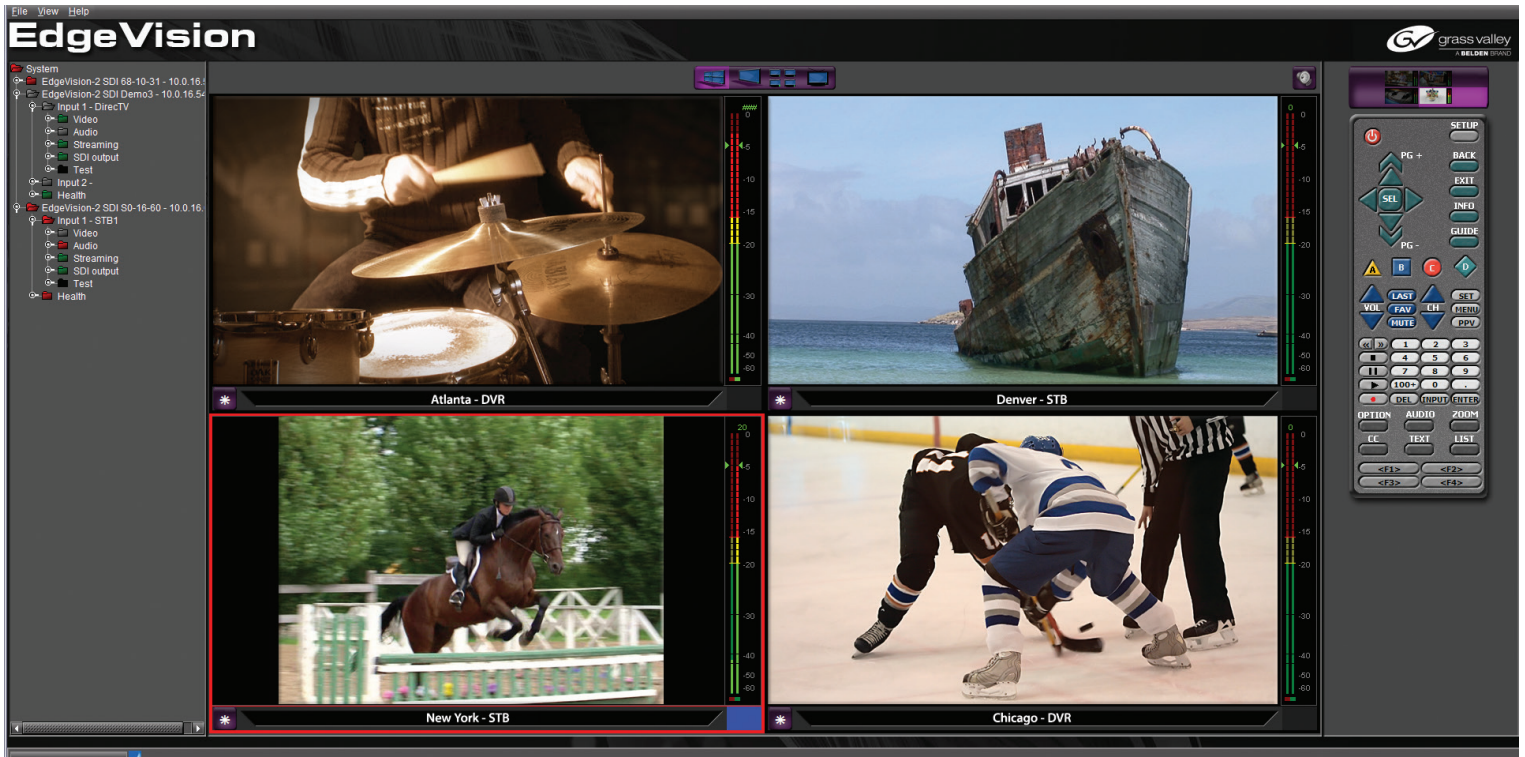
- User authentication to control access
- Dynamic IP allocation to accelerate commissioning

*Only available with composite input.

Richly Featured Quality of Experience Monitoring

The EdgeVision Player multiviewer interface offers easy to use and highly effective Quality of Experience monitoring.

Quad-split view



Silence, overload, mono, out of phase, and loudness audio alarms

Freeze and black video alarms including macro-block detection

Audio loudness monitoring

Under monitor labeling clearly identifies the signal source

Quad or single window monitoring

Multichannel audio metering

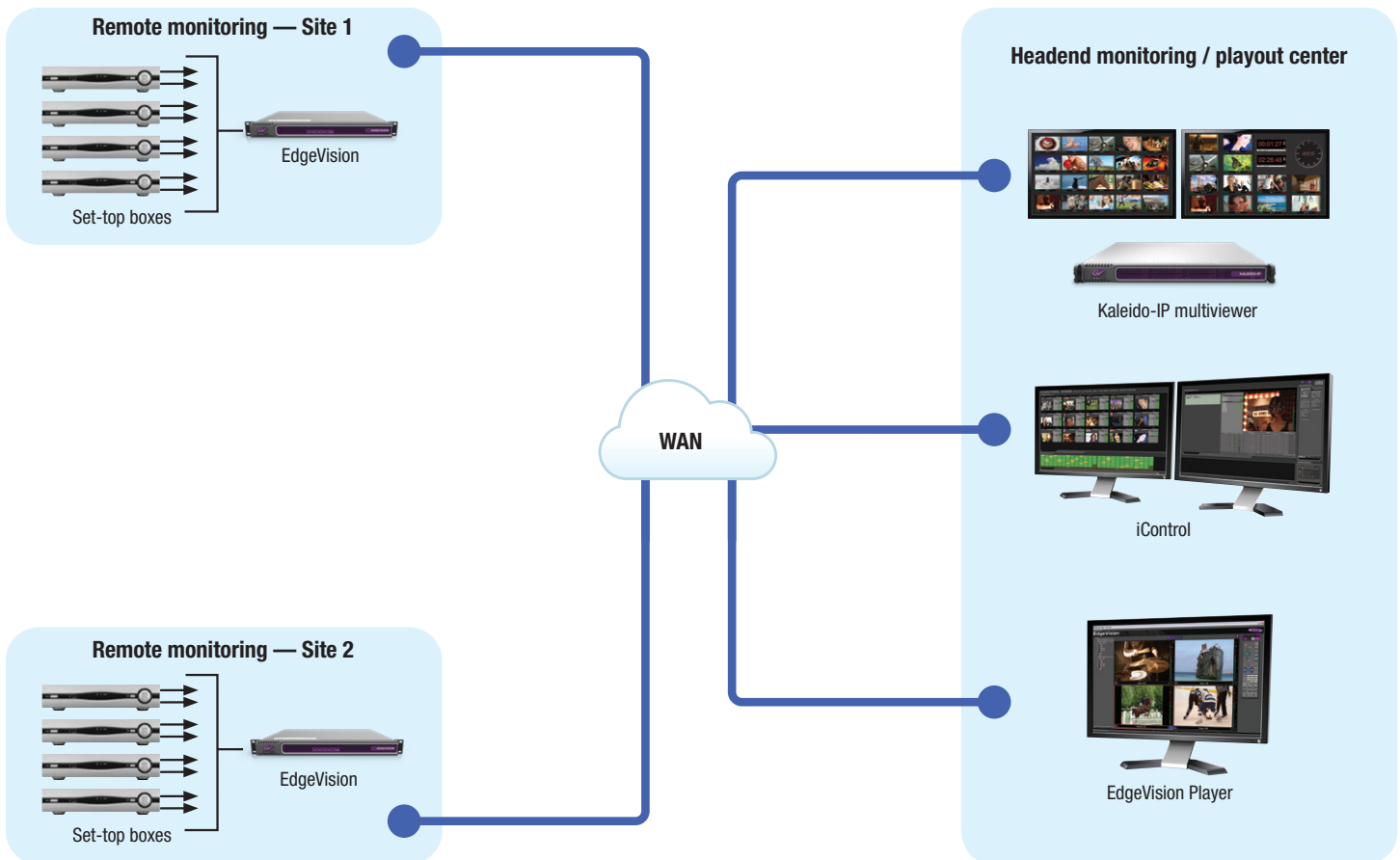
Set-top box control



Full screen view

Integration with Other Quality of Experience Monitoring Systems

EdgeVision can also operate as an advanced, multichannel video/audio signal probe with other Grass Valley systems. Signal alarms, Metadata and audio loudness levels as well as audio/video streams generated by EdgeVision can be remotely monitored by the EdgeVision Player, iControl Web as well as Kaleido-IP multiviewers.



SPECIFICATIONS

Physical

Weight: Approx. 3.75 kg (8.27 lbs.)
Dimensions: 1 RU
 Rackmountable in EIA 48.26 cm (19 in.) racks

Electrical

Power supply: single PSU, second redundant PSU available as an option
Power consumption: Maximum of 50W at 12V

Compliance

Telcordia-NEBS, CE, FCC and CSA

Ethernet

Dual Gigabit Ethernet IEEE 802.3 ports (RJ45)
 External Set-top Box Control
 Up to four infrared connectors
 Both infrared and electrical 3.5 mm (0.13 in.) supported

HD-SDI/SD-SDI Output (up to 4)

Connector: BNC (75Ω)
Signal: 4:2:2 SMPTE ST 259-C (270 Mb/s), SMPTE ST 272-1994, 4:2:2 SMPTE ST 292-C (1.5 Gb/s)
Format: 525, 625, 480i, 576i, 720p, 1080i

Audio/Video Input (up to 4)

Video connectors: HDMI-IN*, RCA
Video input: HDMI, analog component, analog composite
Audio connectors: HDMI-IN, S/PDIF-IN, RCA
Audio input: 48 kHz analog, PCM audio or AC-3 Dolby Digital audio (optional)

IP Streaming

Streaming mode: RTSP/ES over UDP/RTP, RTSP/TS over UDP/RTP, Unicast TS over UDP/RTP, Multicast TS over UDP/RTP, RTSP/TS over TCP, Multicast TS over UDP
Signal path: 8 bits
Compression: H.264 high profile (level 4.1)
Frame rate: Full rate down to 5 fps

Bit rate: 125 kb/s to 4 Mb/s

Resolution: 128x96 to 1920x1080

TS Mux mode: VBR or CBR

Audio encoding: AAC, MPEG-1 Layer II or AC-3 (forwarded from input)

Probing

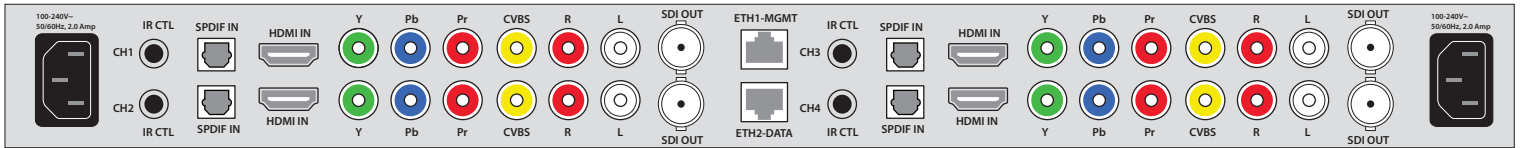
Video: Loss, black, freeze, macroblock, luma too high
Audio: Silence, overload, out of phase, mono error, loudness error
Loudness measurement: EBU R128, ATSC A/85, ARIB TR B-32
 Audio-video Fingerprints

Metadata

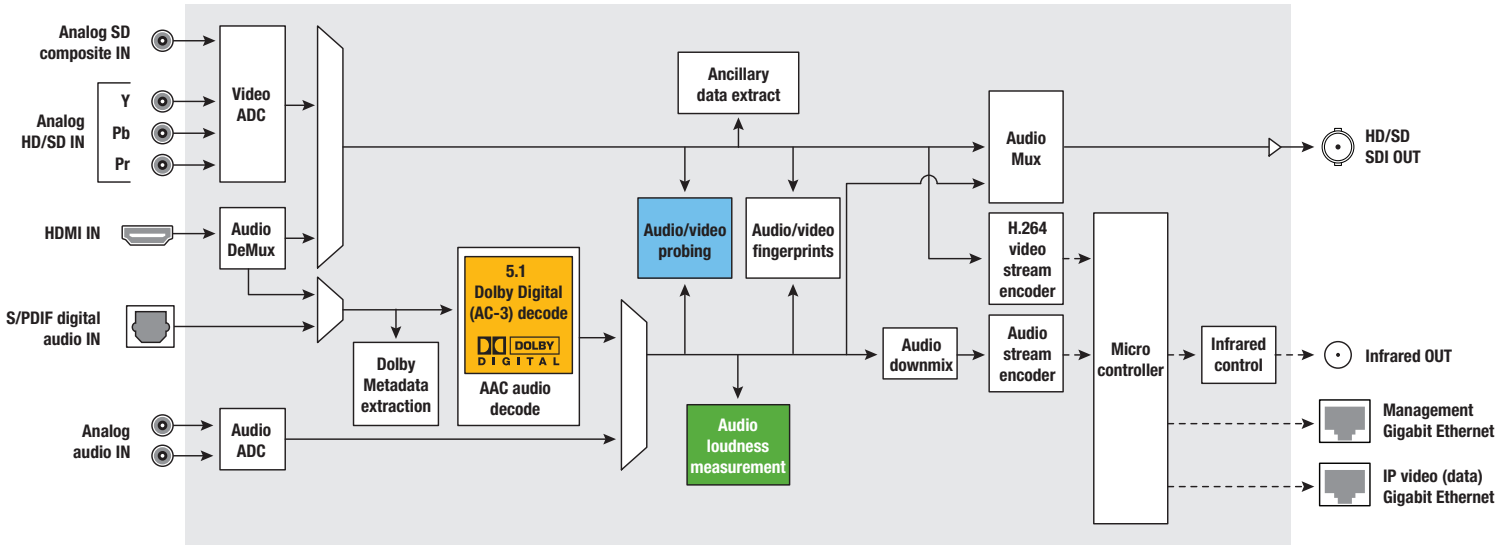
Video: Format, rate
Audio: Type, AC3 metadata, channel allocation
608: CC loss, V-Chip loss, TSID loss, station ID loss

* HDMI signal must not be subjected to HDCP copy protection.





Rear view of the quad-input EdgeVision



EdgeVision Channel Functional Block Diagram

Options

- EDGE-VISION-OPT-AV-PROBE
- EDGE-VISION-OPT-DOLBY
- EDGE-VISION-OPT-LOUD

ORDERING

EDGEVISION-2

Edge signal monitoring device — dual channel

EDGEVISION-2-SDI

Edge signal monitoring device — dual channel with SDI outputs

EDGEVISION-4

Edge signal monitoring device — quad channel

EDGEVISION-4-SDI

Edge signal monitoring device — quad channel with SDI outputs

General Options

EDGEVISION-OPT-AV-PROBE

Audio/video signal probing option (1 per channel)

EDGEVISION-OPT-CABLE-KIT

Optional cable kit for EdgeVision, includes the following cables (1 per input):

- One 2 meter / 6 foot HDMI
- One 2 meter / 6 foot S/PDIF audio
- One 2 meter / 6 foot infrared

EDGEVISION-OPT-IR-LEARNING

Optional infrared remote control learning kit

EDGEVISION-OPT-LOUD

Audio loudness monitoring option (1 per channel)

EDGEVISION-2-OPT-DOLBY

Dolby digital (AC-3) audio monitoring option for dual input device

EDGEVISION-4-OPT-DOLBY

Dolby digital (AC-3) audio monitoring option for quad input device

EDGEVISION-PSU

Redundant power supply module for single or dual input device

EDGEVISION-4-PSU

Redundant power supply module for quad input device

Related Products

KIP-X330

Kaleido-IP X330 multi-image IP processor

KIP-X130

Kaleido-IP X130 multi-image IP processor



WWW.GRASSVALLEY.COM

Join the Conversation at **GrassValleyLive** on Facebook, Twitter, YouTube and **Grass Valley** on LinkedIn.



www.grassvalley.com/blog

This product may be protected by one or more patents. For further information, please visit: www.grassvalley.com/patents.

Grass Valley®, GV® and the Grass Valley logo are trademarks or registered trademarks of Grass Valley USA, LLC, or its affiliated companies in the United States and other jurisdictions. Grass Valley products listed above are trademarks or registered trademarks of Grass Valley USA, LLC or its affiliated companies, and other parties may also have trademark rights in other terms used herein.

Copyright © 2014, 2016, 2021 Grass Valley Canada. All rights reserved. Specifications subject to change without notice.