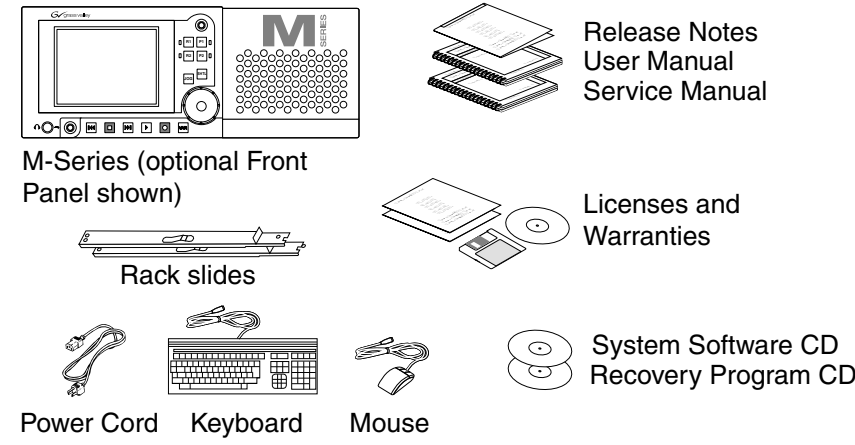
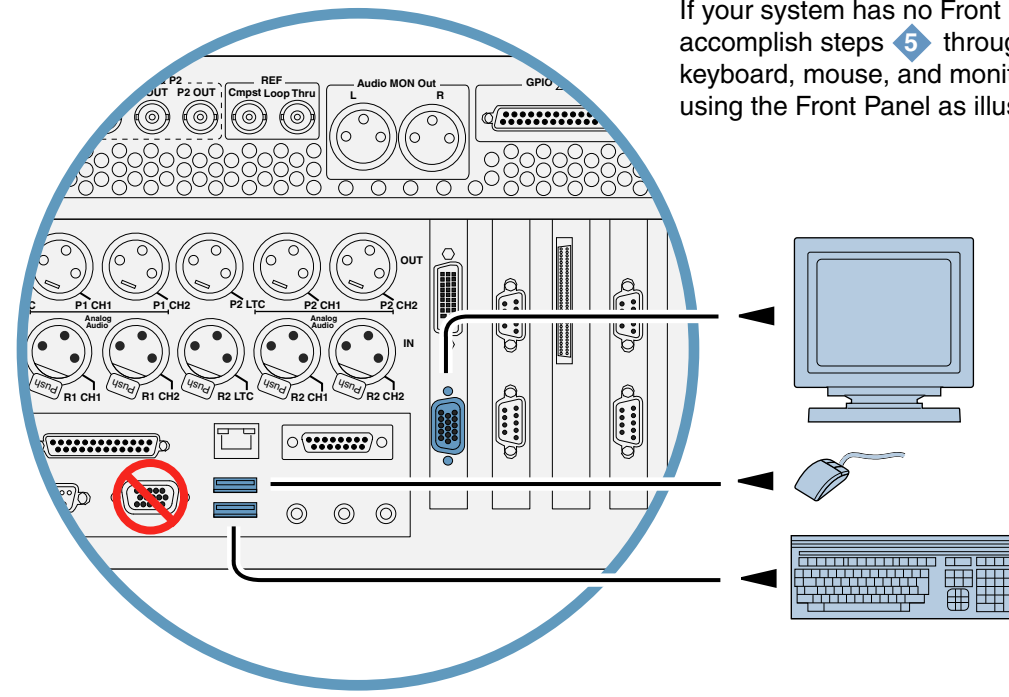


# M-Series Quick Start Guide

Before you begin, unpack and identify the following items:

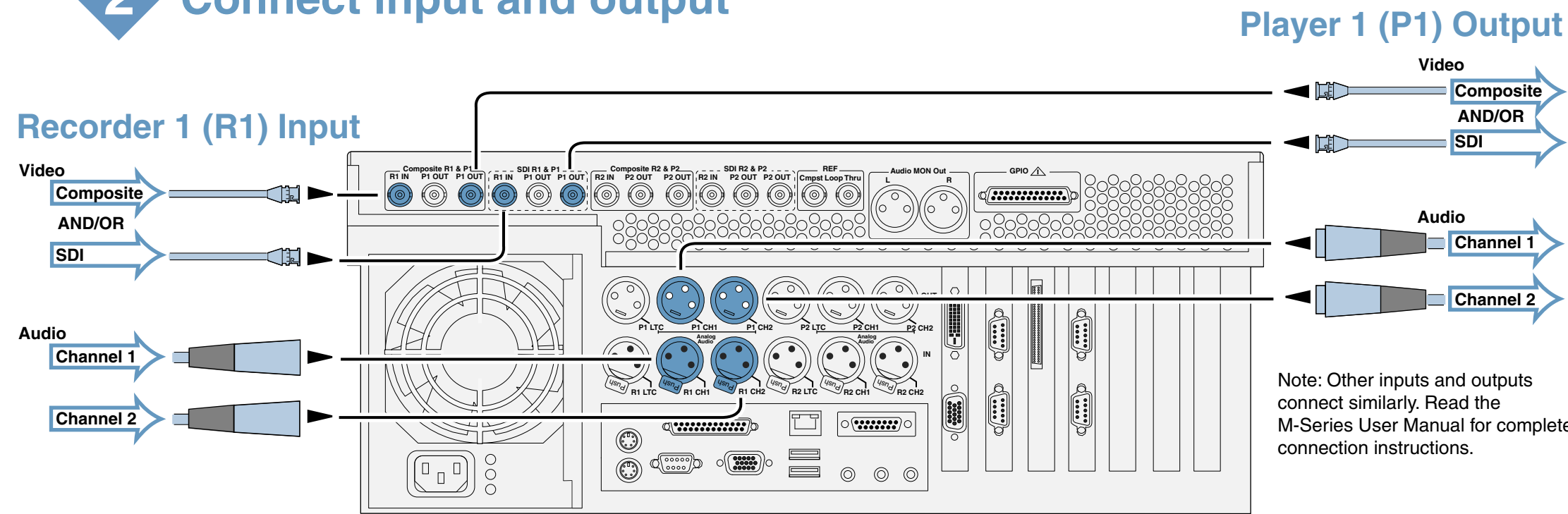


## 1 For systems with no Front Panel, connect keyboard, mouse, and monitor



If your system has no Front Panel you must accomplish steps 5 through 8 using keyboard, mouse, and monitor rather than using the Front Panel as illustrated.

## 2 Connect input and output



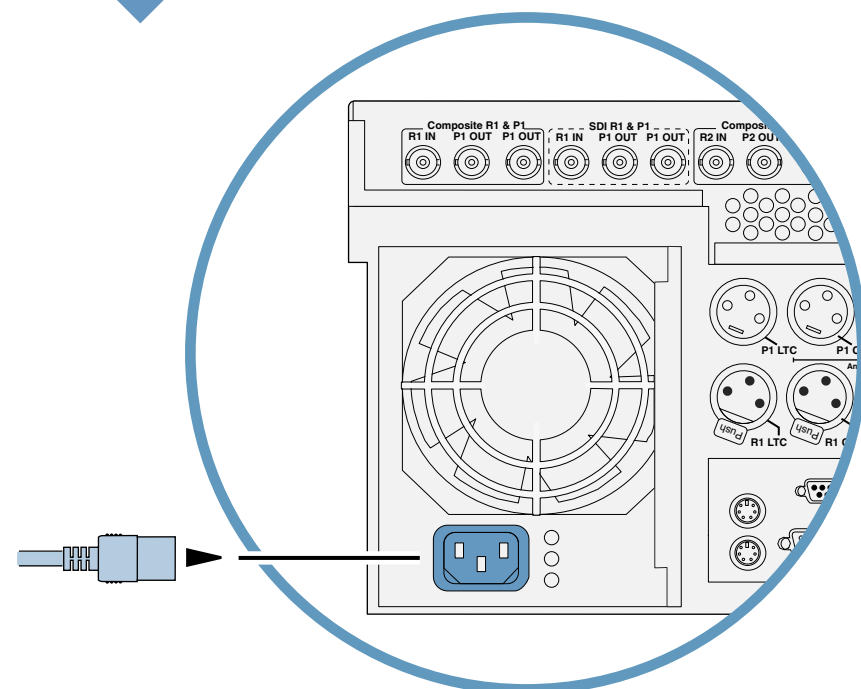
Player 1 (P1) Output

Video  
Composite  
AND/OR  
SDI

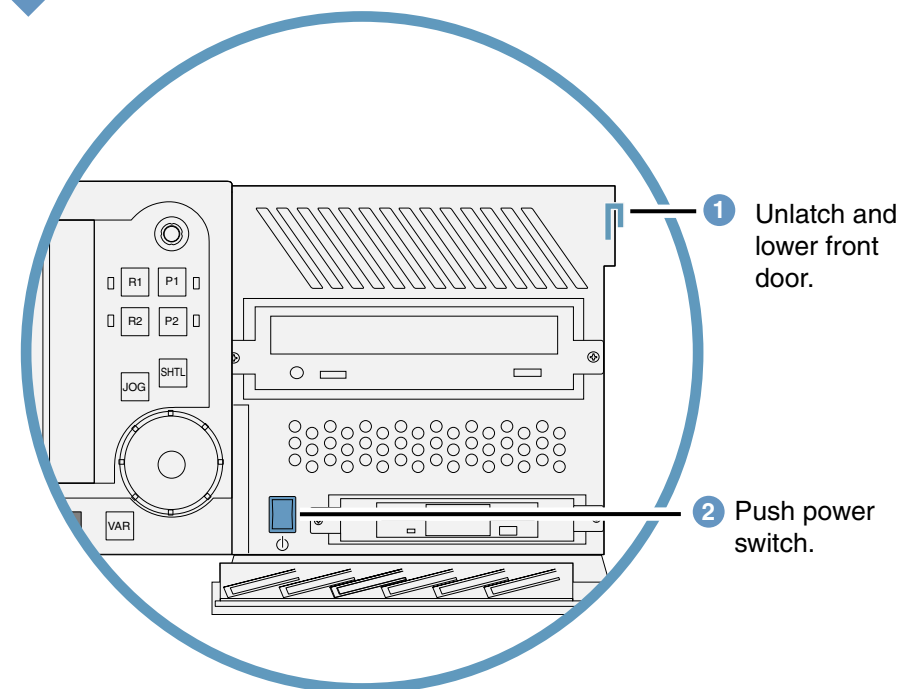
Audio  
Channel 1  
Channel 2

Note: Other inputs and outputs connect similarly. Read the M-Series User Manual for complete connection instructions.

## 3 Connect power cable



## 4 Switch power on



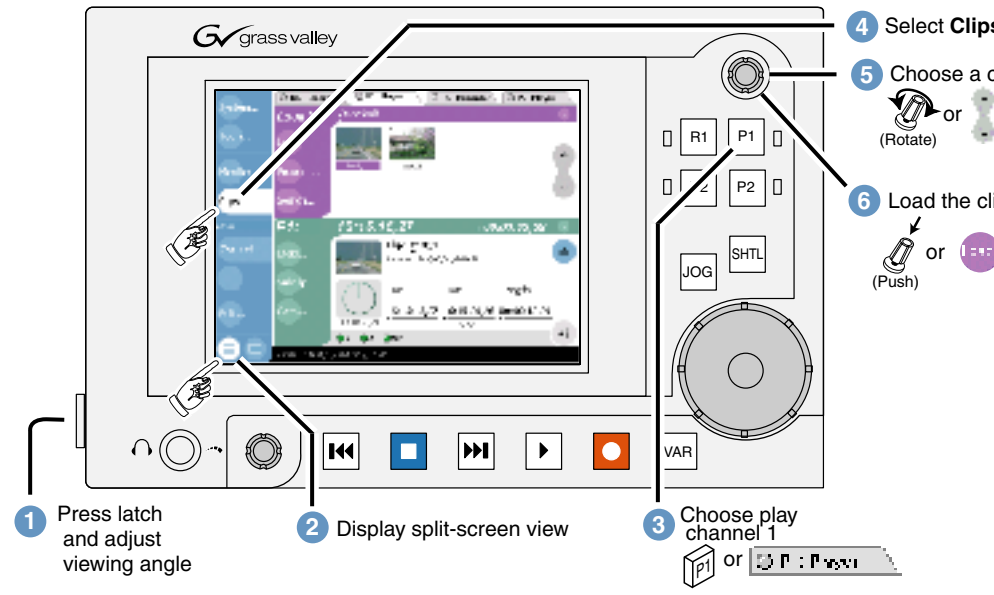
1 Unlatch and lower front door.

2 Push power switch.

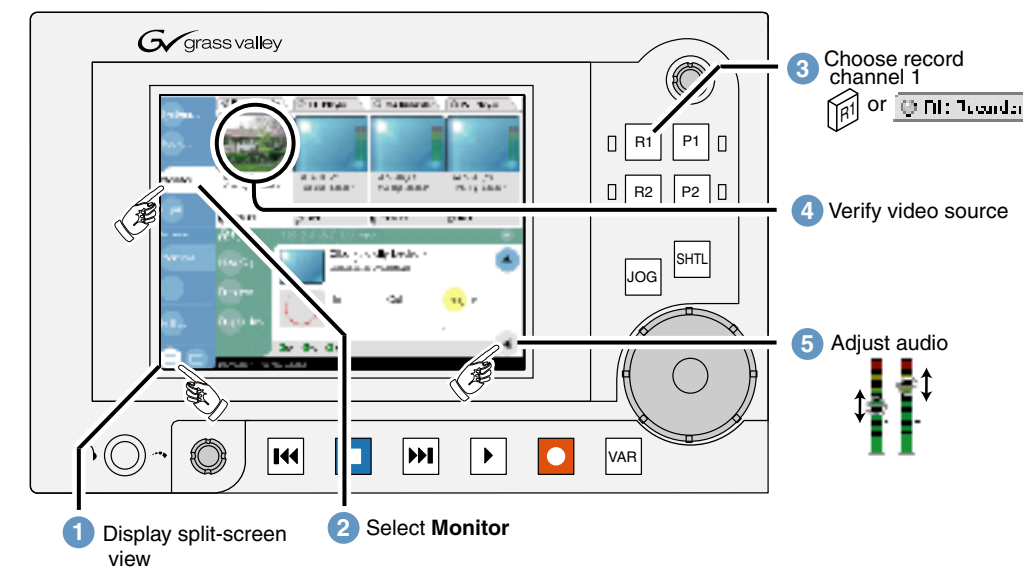
Note: Wait for startup processes to complete. M-Series applications start automatically.

## 5 Play a clip

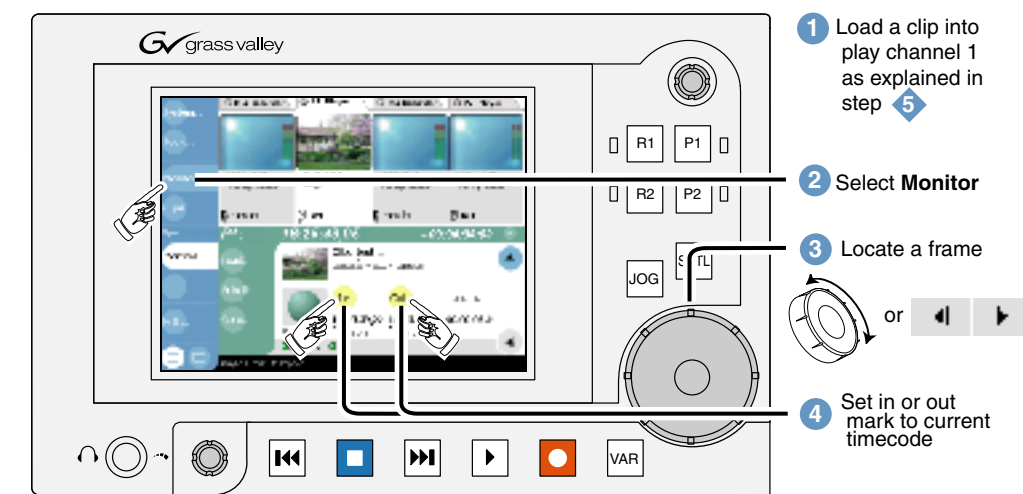
Note: Touch-screen on Front Panel.



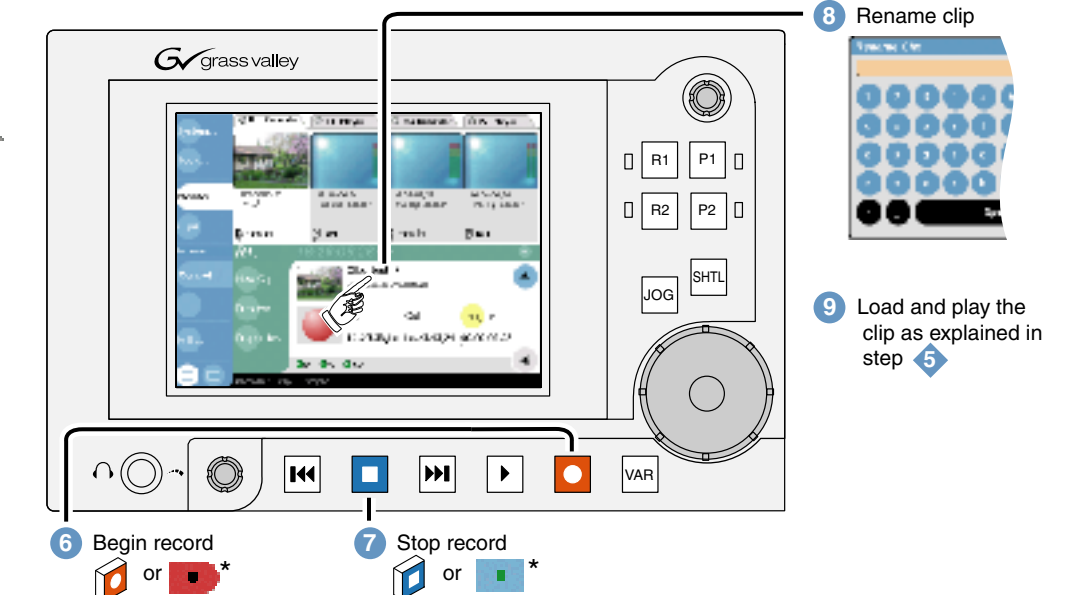
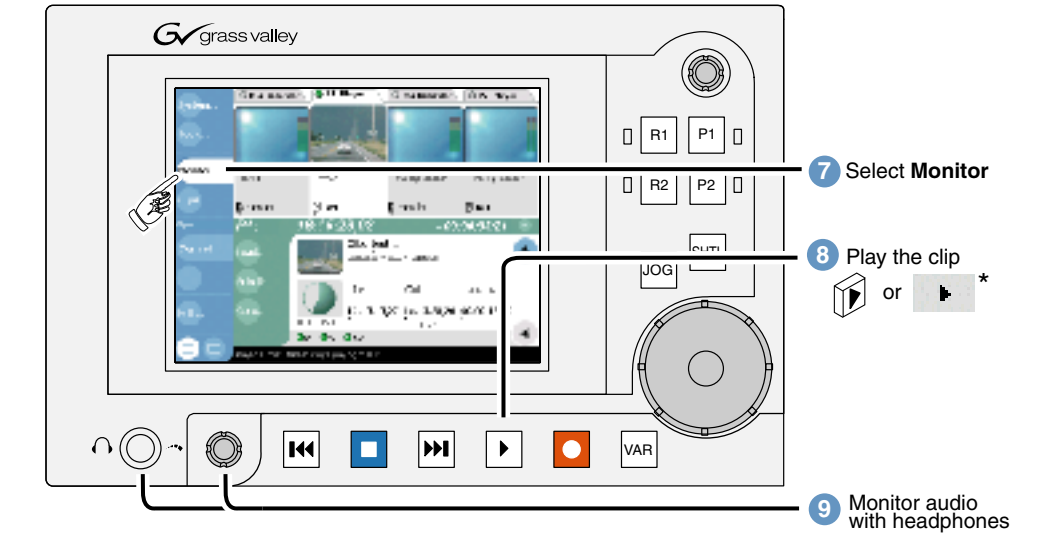
## 6 Record a clip



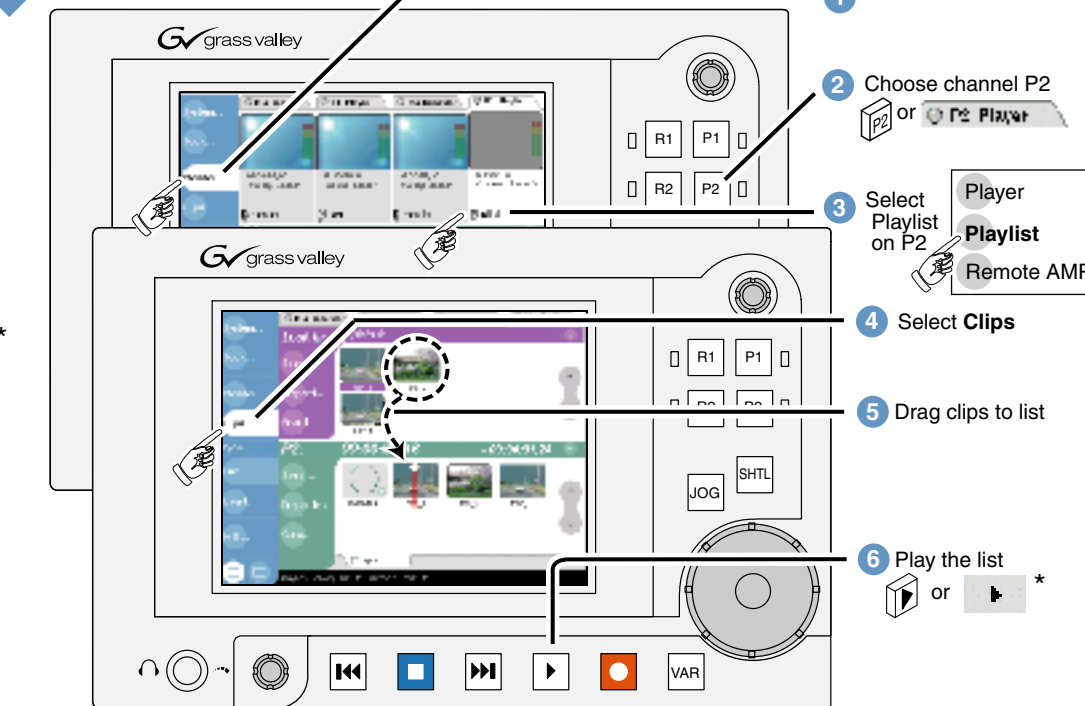
## 7 Trim a clip



\*Note: Controls marked with an asterisk (\*) are provided on the VGA monitor only.



## 8 Create a playlist



### If you have a problem with...

- Video standard (NTSC/PAL)
- Video input source (SDI/Composite)
- Recording timecode
- Playing a clip
- The VGA monitor

### Make corrections here...

- System | Configuration | System
- System | Configuration | Channel | R1 | Video Input
- On the Recorder context menu choose Select Timecode Source
- Verify that the clip is loaded in a play channel rather than a record channel
- Verify the monitor connection as in step 4

For other problems refer to the M-Series Service Manual