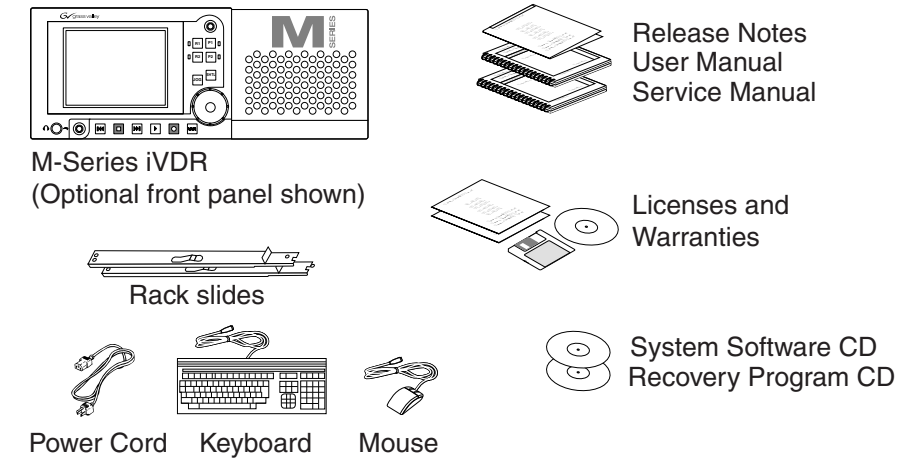


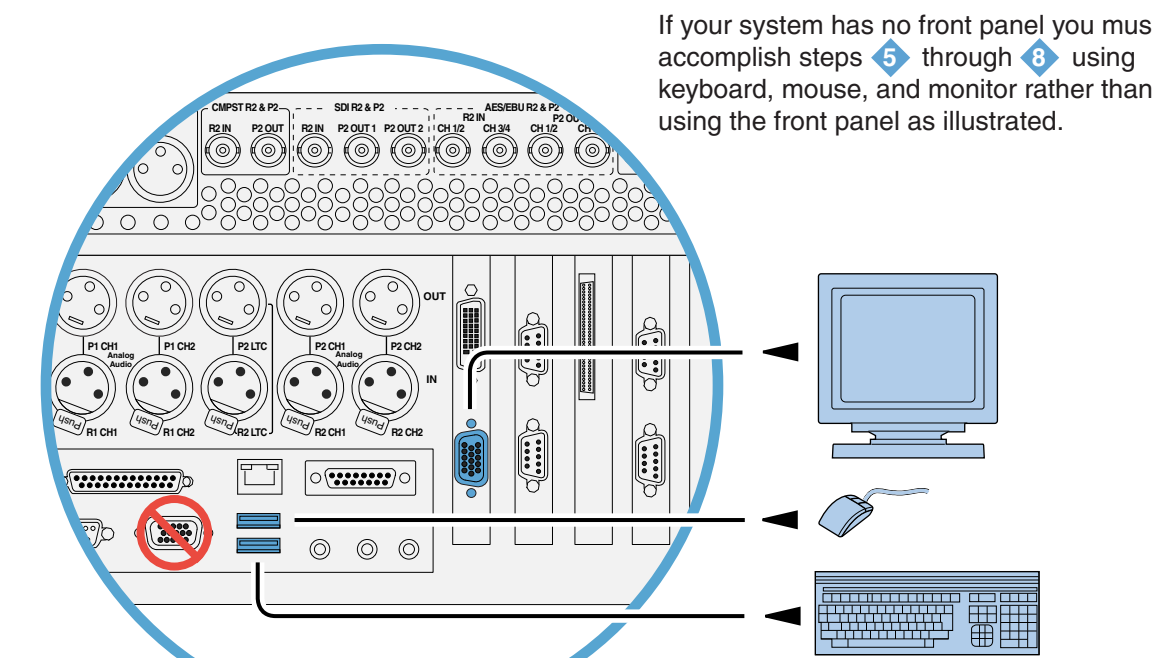
M-Series iVDR Quick Start Guide

For models with digital audio

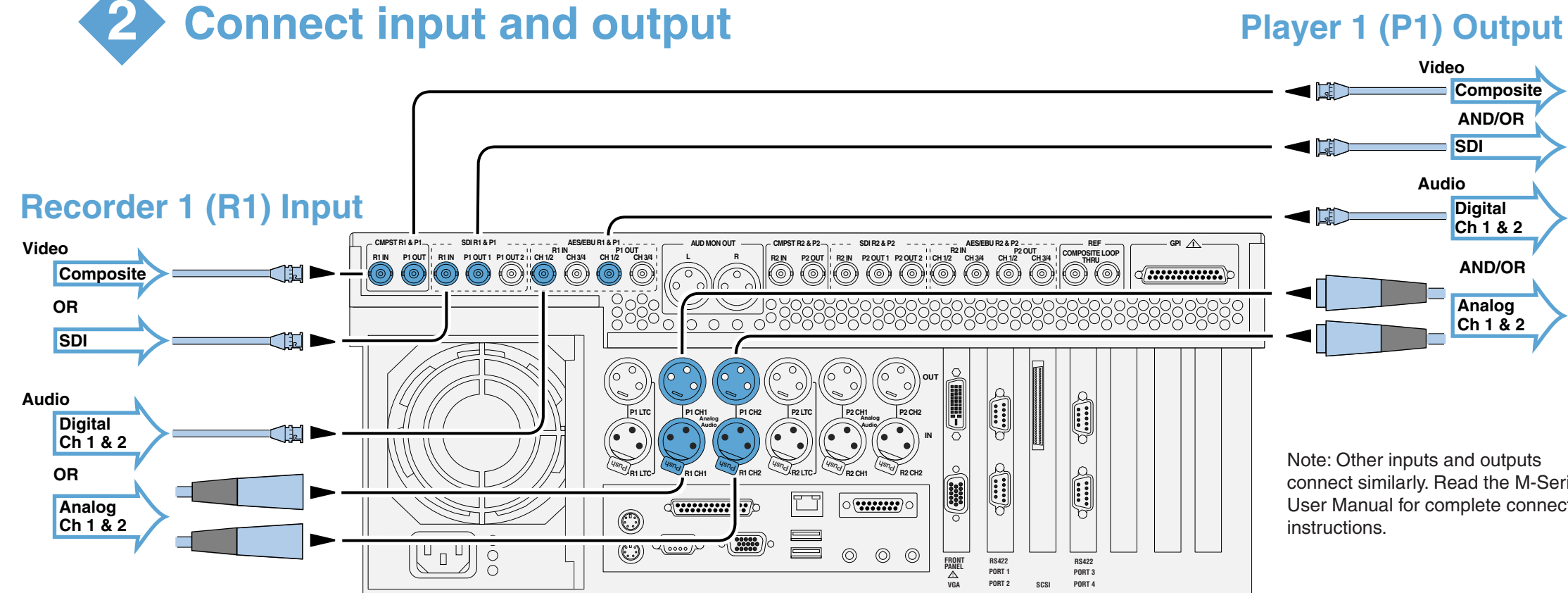
Before you begin, unpack and identify the following items:



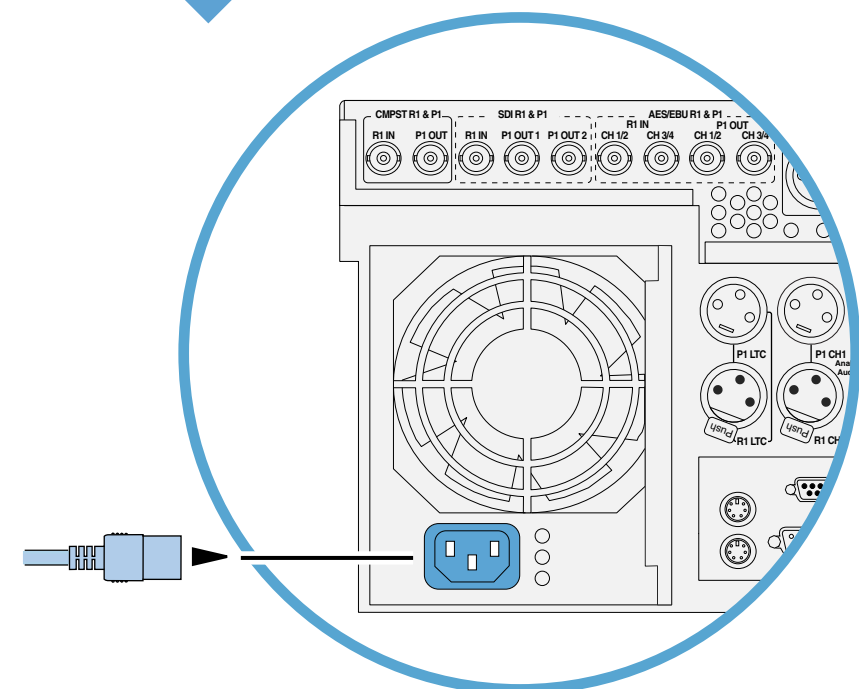
1 For systems with no front panel, connect keyboard, mouse, and monitor



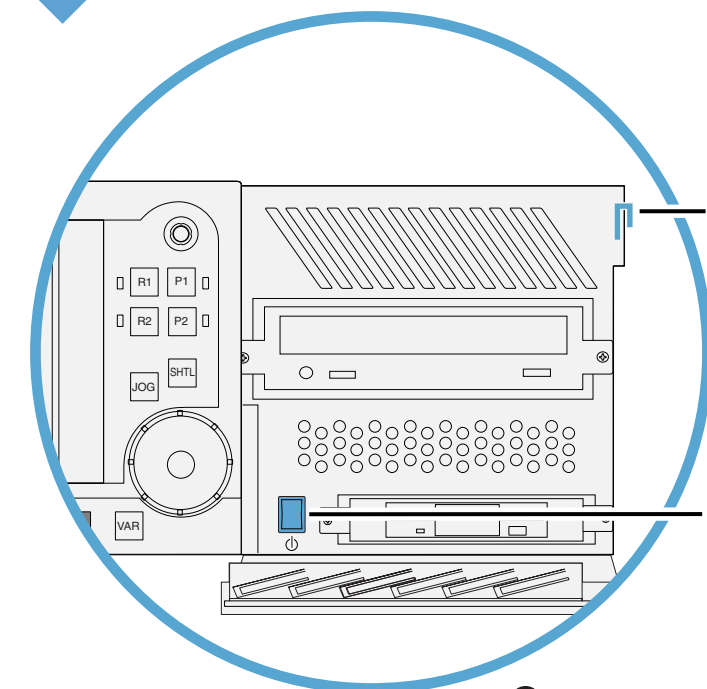
2 Connect input and output



3 Connect power cable

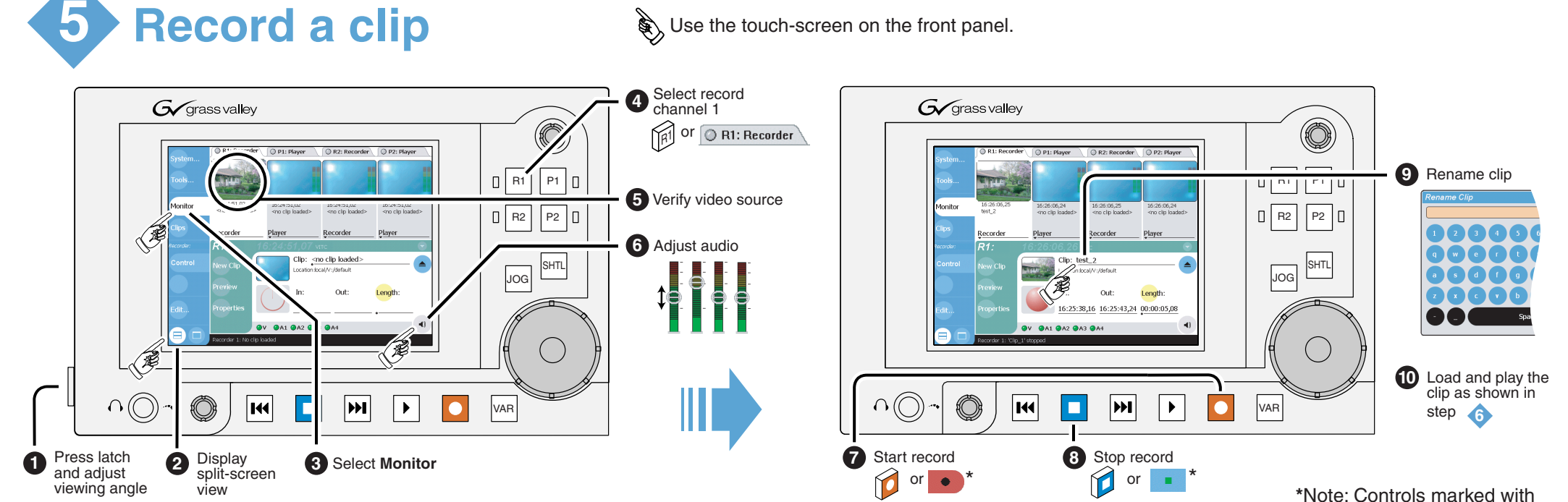


4 Switch power on

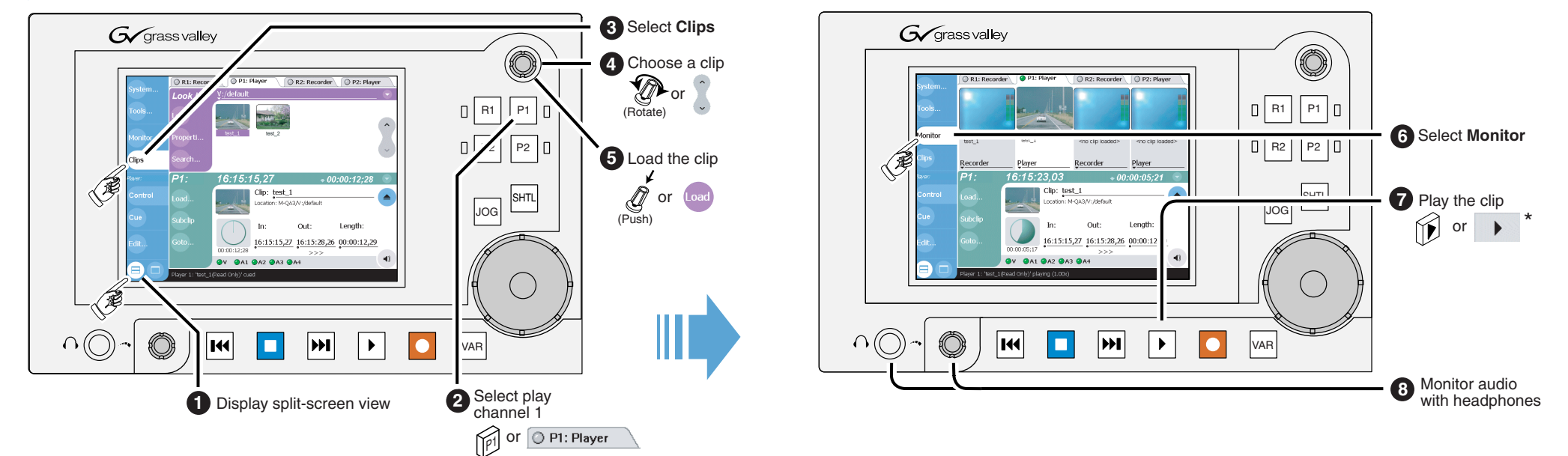


3 If no front panel, press **Ctrl + Alt + C** after startup to set correct VGA display settings. To modify VGA display settings, see the *M-Series User Manual*.

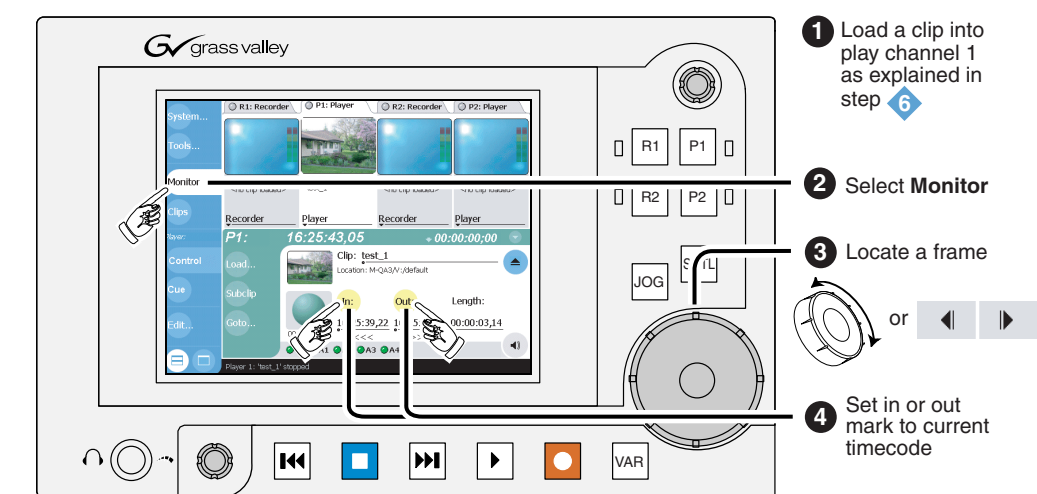
5 Record a clip



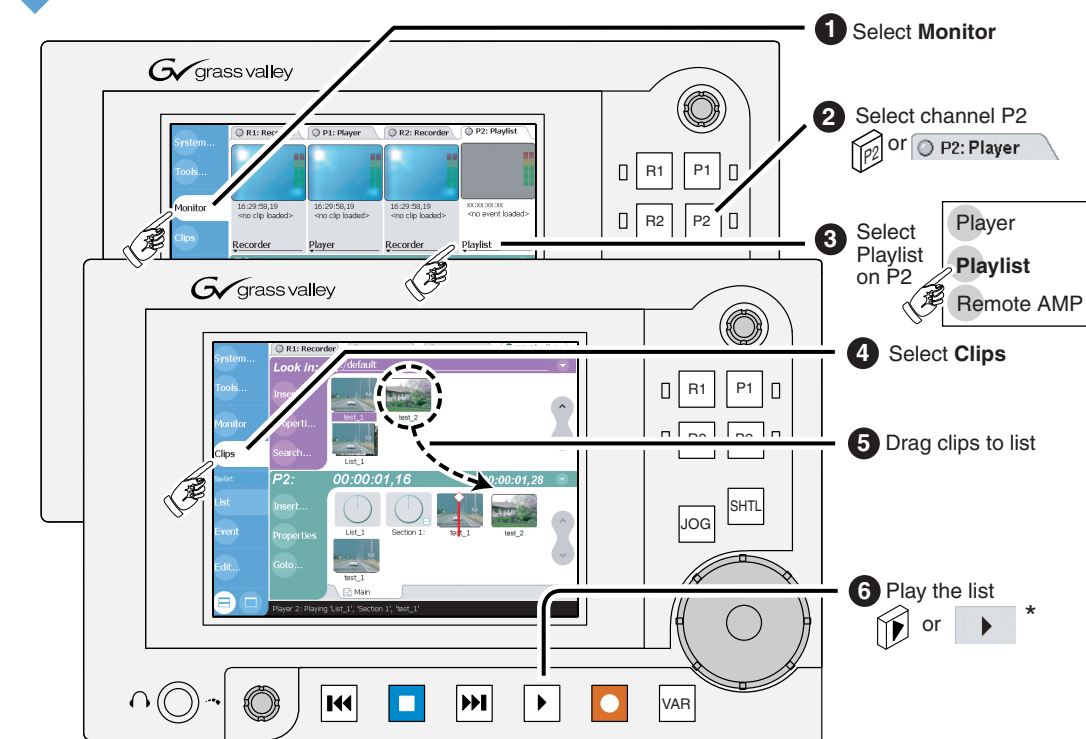
6 Play a clip



7 Trim a clip



8 Create a playlist



If you have a problem with...

- Video standard (NTSC/PAL)
- Video input source (SDI/Composite)
- Audio input source (Analog, Digital, Embedded)
- Audio output (Embedded Audio Group)
- Recording timecode
- Playing a clip
- The VGA monitor

Make corrections here...

- System | Configuration | System
- System | Configuration | Channel | R1 | Video Input
- System | Configuration | Channel | R1 | Audio Input
- System | Configuration | Channel | P1 | Audio Output
- On the Recorder context menu choose **Options** | Timecode
- Verify that the clip is loaded in a play channel rather than a record channel
- Verify the monitor connection as in step 4

For other problems refer to the M-Series Service Manual.