

# MasterLogo

Logo Conversion Tool for MCEs and MCPMs

## User's Guide

UG0063-01

7 Nov 2012



---

A **BELDEN** BRAND

---

## Copyright © 2012 by Miranda Technologies

All rights reserved. No part of this manual may be reproduced in any form by photocopy, microfilm, xerography or any other means, or incorporated into any information retrieval system, electronic or mechanical, without the written permission of Miranda Technologies, Inc..

- Document Revision: 1.1
- Document Part Number: UG0063-01
- Software Version: 7.2.9.0

## Change History

Rev.	Date	ECO	Description	Approved
1.0	29 Nov 11	17941	Conforms to software release 7.2.0. This document started as a copy of UG0008.	D.Cox
1.1	07 Nov 12	18617	Conforms to software release 7.2.9.	D.Cox

## Notice

Due to continued product development, the accuracy of the information in this document may change without notice. The information and intellectual property contained herein is confidential between Miranda and the client and remains the exclusive property of Miranda. If you find any problems in the documentation, please report them to us in writing. Miranda does not warrant that this document is error-free.

## **FC** FCC Statement

This equipment has been tested and found to comply with the limits for a Class A digital device, pursuant to part 15 of the FCC Rules. These limits are designed to provide reasonable protection against harmful interference when the equipment is operated in a commercial environment. This equipment generates, uses, and can radiate radio frequency energy and, if not installed and used in accordance with the instruction manual, may cause harmful interference to radio communications. Operation of this equipment in a residential area is likely to cause harmful interference in which case the user will be required to correct the interference at his own expense.

## **CE** Declaration of Conformance (CE)

All of the equipment described in this manual has been designed to conform with the required safety and emissions standards of the European Community. Products tested and verified to meet these standards are marked as required by law with the CE mark.

When shipped into member countries of the European Community, this equipment is accompanied by authentic copies of original Declarations of Conformance on file in Miranda USA offices in Grass Valley, California USA.

## Trademarks

Miranda is a registered trademark of Miranda Technologies, Inc.

Brand and product names mentioned in this manual may be trademarks, registered trademarks or copyrights of their respective holders. All brand and product names mentioned in this manual serve as comments or examples and are not to be understood as advertising for the products or their manufactures.

## **Software License Agreement and Warranty Information**

Contact Miranda for details on the software license agreement and product warranty.

## **Important Safeguards and Notices**

This section provides important safety guidelines for operators and service personnel. Specific warnings and cautions appear throughout the manual where they apply. Please read and follow this important information, especially those instructions related to the risk of electric shock or injury to persons.

---

### **WARNING**

Any instructions in this manual that require opening the equipment cover or enclosure are for use by qualified service personnel only. To reduce the risk of electric shock, do not perform any service other than that contained in the operating instructions unless you are qualified to do so.

---

## **Restriction on Hazardous Substances (RoHs)**

Miranda is in compliance with EU Directive RoHS 2002/95/EC governing the restricted use of certain hazardous substances and materials in products and in our manufacturing processes.

Miranda has a substantial program in place for RoHS compliance that includes significant investment in our manufacturing process, and a migration of Miranda product electronic components and structural materials to RoHS compliance.

It is our objective at Miranda GVD to maintain compliance with all relevant environmental and product regulatory requirements. Detailed information on specific products or on the RoHS program at Miranda is available from Miranda Customer Support at

1-800-719-1900 (toll-free) or  
1-530-265-1000 (outside the U.S.).

---

## Symbols and Their Meanings



The lightning flash with arrowhead symbol within an equilateral triangle alerts the user to the presence of dangerous voltages within the product's enclosure that may be of sufficient magnitude to constitute a risk of electric shock to persons.



The exclamation point within an equilateral triangle alerts the user to the presence of important operating and maintenance/service instructions.



The ground symbol represents a protective grounding terminal. Such a terminal must be connected to earth ground prior to making any other connections to the equipment.



The fuse symbol indicates that the fuse referenced in the text must be replaced with one having the ratings indicated.



The presence of this symbol in or on Miranda equipment means that it has been designed, tested and certified as complying with applicable Underwriter's Laboratory (USA) regulations and recommendations.



The presence of this symbol in or on Miranda equipment means that it has been designed, tested and certified as essentially complying with all applicable European Union (CE) regulations and recommendations.

## General Warnings

A warning indicates a possible hazard to personnel which may cause injury or death. Observe the following general warnings when using or working on this equipment:

- Heed all warnings on the unit and in the operating instructions.
- Do not use this equipment in or near water.
- This equipment is grounded through the grounding conductor of the power cord. To avoid electrical shock, plug the power cord into a properly wired receptacle before connecting the equipment inputs or outputs.
- Route power cords and other cables so they are not likely to be damaged.
- Disconnect power before cleaning the equipment. Do not use liquid or aerosol cleaners; use only a damp cloth.
- Dangerous voltages may exist at several points in this equipment. To avoid injury, do not touch exposed connections and components while power is on.
- Do not wear rings or wristwatches when troubleshooting high current circuits such as the power supplies.
- To avoid fire hazard, use only the specified fuse(s) with the correct type number, voltage and current ratings as referenced in the appropriate locations in the service instructions or on the equipment. Always refer fuse replacements to qualified service personnel.
- To avoid explosion, do not operate this equipment in an explosive atmosphere.
- Have qualified service personnel perform safety checks after any service.

## General Cautions

A caution indicates a possible hazard to equipment that could result in equipment damage. Observe the following cautions when operating or working on this equipment:

- When installing this equipment, do not attach the power cord to building surfaces.
- To prevent damage to equipment when replacing fuses, locate and correct the problem that caused the fuse to blow before re-applying power.
- Use only the specified replacement parts.
- Follow static precautions at all times when handling this equipment.
- This product should only be powered as described in the manual. To prevent equipment damage, select the proper line voltage on the power supply(ies) as described in the installation documentation.
- To prevent damage to the equipment, read the instructions in the equipment manual for proper input voltage range selection.
- Some products include a backup battery. There is a risk of explosion if the battery is replaced by a battery of an incorrect type. Dispose of batteries according to instructions.
- Products that have (1) no on/off switch and (2) use an external power supply must be installed in proximity to a main power output that is easily accessible.



# toc

## Table of Contents

<b>1</b>	<b>MasterLogo .....</b>	<b>1</b>
	Summary .....	1
	MCPMs .....	1
	MCEs .....	2
	Logo Basics .....	2
	Installation .....	3
	Starting MasterLogo .....	3
	Managing Logo Images .....	4
	Theory .....	4
	MCPMs.....	4
	MCEs.....	4
	Process .....	4
	Working with MasterLogo.....	6
	Preliminary Steps for Static Logos.....	6
	Preliminary Steps for Animated Logos .....	6
	Creating a Static Logo .....	7
	Creating an Animated Logo .....	9
	Uploading Logos to the MCPM .....	11
	Single Logo .....	11
	All Logos .....	13
	Other Topics.....	16
	File Menu .....	16
	Communication Menu .....	17
	View Menu .....	17
	Tools Menu .....	17
	Help Menu .....	17
	Notes .....	19
	Troubleshooting .....	20
<b>2</b>	<b>Misc.....</b>	<b>21</b>
	Installation .....	21
	PC Configuration .....	22
	Selecting MCPMs and MCEs .....	24
	IP Address Dialog .....	24
	MCPM Tree Area .....	24
	XML Files.....	25
	<b>Index.....</b>	<b>27</b>
	<b>Contact Us .....</b>	<b>31</b>

## Table of Contents

---



# 1 MasterLogo

This chapter describes MasterLogo, an application that adapts graphic images and animations for use with the iMC master control system.

## Topics

<a href="#">Summary</a> .....	1
<a href="#">Installation</a> .....	3
<a href="#">Starting MasterLogo</a> .....	3
<a href="#">Managing Logo Images</a> .....	4
<a href="#">Working with MasterLogo</a> .....	6
<a href="#">Other Topics</a> .....	16

## Summary

MasterLogo is a small program that converts your logo artwork to the format required by the logo inserters integral to the MCPM. MasterLogo also sends logos to the MCPM. (MasterConfig invokes MasterLogo when you write a configuration to an MCPM.)

MasterLogo supports MCEs, which are MCPMs having new architecture. MCEs provide additional support for logos.

In practice, logos are used to identify a television station during programming and have now become an integral part of a station's overall branding regimen. Logos are often animated and used to advertise upcoming programs or events, identify sponsors, or to provide information about the current program.

A logo can be any graphic image, of course; it need not be a "company logo" *per se*.

MasterLogo has two functions: (1) convert graphics to logo format and (2) create lists of logo files that are to be loaded with MCPM configurations.

MCPMs and MCEs support animated or stationary logos. Animated logos may run once or loop, and if they loop, they may pause at the end of the loop.

## MCPMs

MCPMs have up to 128MB or up to 512MB of RAM in which to store logos, depending on the model. HD logos require the larger memory. The maximum number of logos of any type is 64.

- ▲ The first logo (identified in the MasterConfig logo images list by selno 1) is stored in non-volatile memory (flash) and is always available immediately after an MCPM restarts. It must be static, and must be less than 1.7 MB in size. The MCPM stores all other logos in logo RAM (volatile) and you must upload these logos to the MCPM prior to use. The upload process is semi-automatic. You will be prompted to upload them after a reset initiated by MasterConfig. You must upload logos manually after a power cycle. The maximum file size for these logo images is 2.3MB per image.

- ▲ The maximum number of frames for an animated logo image is 256. At 30 fps, that amounts to 8.5 seconds of animation. At 25 fps, that is 10.2 seconds of animation.

## MCEs

MCEs have up to 2 GB of memory in which to store logos. The maximum number of logos of any type is presently 400. The maximum number of frames for an animated logo image is 108,000 (approximately 1 hour at 30 fps).

- ▲ All logos in an MCE reside in non-volatile storage. It is not necessary to reload logos at every restart.

## Logo Basics

A logo is a graphic element stored in the MCPM. A logo comprises one or more files to be keyed into the program video signal. There are two principle types of logos:

- A basic (or static) logo. This logo type uses one image file (the fill) and, usually, one mask file (the key). After MasterLogo processes a static logo, it combines the key and fill in a single file. The mask (key) is a pixel matrix of the same dimension as the image (fill) file. When the fill and key are combined, black pixels in the mask completely hide the logo pixel on the video mix and white pixels completely reveal the logo pixel in the video mix. Gray values in the key allow partially opaque (or partially transparent) logo pixels.
- An animated logo. The source for this logo type is a set of files whose names include sequence numbers at the end of the name:

`motion01.tga, motion02.tga, motion03.tga, motion04.tga, ...`

Each of these files corresponds to one video frame. If the frame rate is 30 fps, and the animation has 60 files, the animation lasts 2 seconds.

- ▲ Preferred source files for animations are Targa flip-book format files. (Acceptable Targa files are 24-bit RGB + 8-bit alpha. The alpha channel is the logo key.) Other file types are acceptable but do not generally have an alpha channel and result in a self-keying animation.

### Preparation of graphics for logos

Your graphics department will typically prepare logo images and provide them electronically, in a common file format, to be converted by MasterLogo and managed by MasterConfig users. MasterLogo converts that file format into the internal format required by the MCPM.

MasterLogo converts the following file formats:

Format	Name	Description
TIF	Tagged Image File	Images in this format work quite well and provide very good quality.
BMP	Bitmap	A bitmap can provide a high quality logo. However, some BMP files have reduced color sets.
JPEG, JPG	Joint Picture Experts Group	A compressed file format. Because JPEG format suppresses fine detail, and introduces artifacts, it might not be the best choice. Some JPEG files can be very noisy. Repeatedly saving JPEG files can result in image degradation.
PNG	Portable Network Graphic	Images in this format work quite well.

Format	Name	Description
TGA	Targa	This is a preferred format. The Targa file includes key or alpha channel information so a separate key file <i>is not needed</i> .
GIF	Graphics Interchange Format	GIF files are indexed color files and often used for Internet graphics. They are usually not suitable for photos or continuous tone images.

Logo graphics for use with the master control should meet the following basic requirements:

- A graphic file contains the logo image *actual size*. MasterLogo does not resize graphics. It is important that the image *never* exceed the dimension of your video format.
- For all but one of the graphic file types, a logo will require separate files for the logo fill and the logo key. Targa flip-book files and Targa individual files provide both fills and keys that MasterLogo recognizes; therefore, separate files are not required.
- ▲ Although “full screen” logos are possible and occasionally useful, small logos that can be positioned in MasterConfig (and repositioned by the operator) are more efficient and occupy less memory. When logos are small, you can fit more logos in an MCPM’s logo memory.

The quality of the resultant logo image will depend heavily upon the original artwork and specifically the key signal (or alpha channel) — just as it would with any other keyer source. For other than Targa files, you should provide a separate file for the key signal whenever possible.

It is possible to have MasterLogo create a key signal based on luminance values from the fill, but as with any “luma key,” results will probably be sub-optimal, especially concerning transparency or shadow.

## Installation

MasterLogo is part of the software available on the installation disk (SB0243) you received with your master control system.

Follow the simple installation procedure outlined in the Master Control Quickstart Guide or the Master Control Installation Guide.

User accounts for PCs used for master control must be set to ‘Standard User’ or better. Master control software does not function properly when user accounts are set to ‘Restricted User’ or its equivalent.

## Starting MasterLogo

Although MasterLogo is very simple, you should be familiar with the concepts presented in the preceding [Summary](#) before using MasterLogo.

There are 3 ways to launch MasterLogo:

- Use the Windows Start menu.  
Programs > NVISION > Master Control > MasterLogo - Convert and Load Logos into MCPM
- Double-click the actual program file. This is the default:  
C:\Program Files\NVISION\Master Control\bin\MasterLogo.exe
- Double-click a shortcut (that you have created) to the actual program file.

## Managing Logo Images

There are 4 steps to creating and using a logo successfully. The first two steps use MasterConfig. The last two steps use MasterLogo.

### Theory

An MCPM configuration has a numbered list of up to 64 *logo image* names. An MCE configuration has a numbered list of up to 400 *logo image* names. Each entry in the list also specifies whether the logo is to be a static or an animated logo. Each of the configuration's logo names can be used by any of up to 64 (MCPM) or 400 (MCE) *logo keyers*. The keyers define parameters such as logo opacity and position within the video frame. The same logo image can be used by different logo keyers with different parameters.

As a MasterLogo user, you will create one or more logo files, either static or animated. Each static logo is a single file; each animation is a set of files, one for each animation frame.

MasterLogo creates an association between a logo file (static or animated) and one of the MCPM's logo names. MasterLogo stores up to 64 such associations in a .XML file (for each MCPM) within Master Control's 'config\system' folder.

When you write a configuration to an MCPM or MCE—using MasterConfig—MasterConfig invokes MasterLogo to upload the logo files. MasterLogo reads the .XML file for the specific MCPM or MCE to determine which logos to upload.

You can view all current file-to-logo-name associations—in detail—by issuing a “Write to MCPM>All Logos” command in MasterLogo.

- ▲ To associate a logo file with a logo image name requires that you have an MCPM installed, running, and selected in MasterLogo.
- ▲ The targeted MCPM must have enough logo memory for you to upload the logo.
- ▲ The process creates an MCPM configuration with logos. The resulting configuration can be applied to other MCPMs (of the same type), and not just the MCPM to which you originally sent logos from MasterLogo.

MCEs are different from other MCPMs.

### MCPMs

The first logo (selno 1, in MasterConfig) is always written to flash. Other logos are written to RAM. The first logo is non-volatile and need not be loaded after every MCPM reset.

- ▲ It is prudent to assign your most important logo as the first logo.

MCPM logo memory is either 128 MB or 512 MB. MCPMs allow up to 64 logo images and 64 logo keyer definitions.

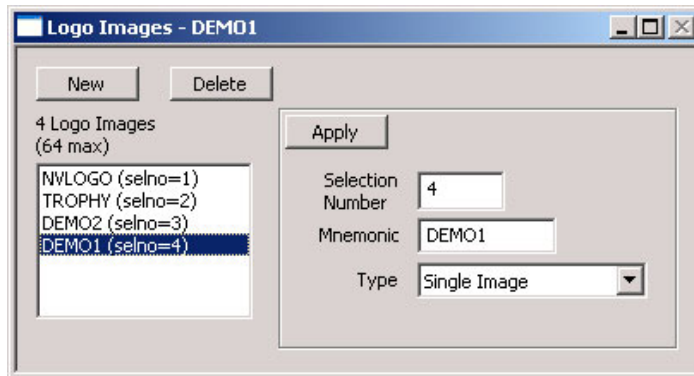
### MCEs

All logos are written to non-volatile memory. MCE memory is 2 GB. MCEs allow up to 400 logo images and 400 logo keyer definitions

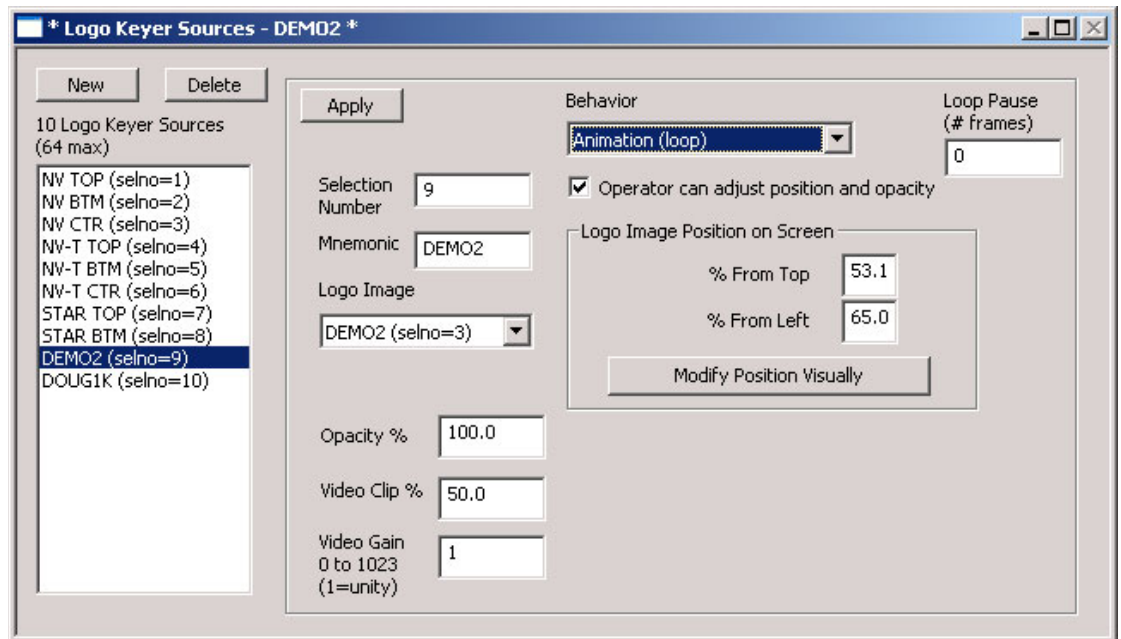
### Process

Follow these steps to create and use a logo:

- 1 Determine the name you want to use for the logo. Enter the name into the Logo Images list in MasterConfig. MasterConfig allows up to 64 images in this list:



Next, define logo attributes such as position, behavior, and opacity using the Logo Keyer Sources window in MasterConfig:



Save the configuration and write it to the MCPM you will use in MasterLogo.

(See the *iMC Reference Manual* for details regarding logo parameters.)

- 2 In MasterLogo, create the logo (static or animated) by opening a graphics file. Saving the file as a logo converts the logo to the format required by an MCPM.

See [Working with MasterLogo](#), next.

- 3 Using MasterLogo, upload the logo into MCPM memory.

It is this last step that associates the logo name in MasterConfig with the logo file. You must perform this step only once. Thereafter, both MasterLogo and MasterConfig can automatically upload your logo(s) to the MCPM. You can change the association later, if you wish.

- ▲ After the logo is in MCPM memory, you might wish to view and adjust its behavior on a preview monitor. You can then make adjustments to its default position and opacity values in MasterConfig.

Repeat these steps for other logos.

## Working with MasterLogo

Before using MasterLogo, you must prepare your graphic input files.

Decide whether to use a static logo or animated logo.

Consider factors such as the position and size of the logo within your target video output and the opacity (or transparency) of the logo. Note that an MCPM configuration might allow an master control operator to adjust logo opacity and position.

### Preliminary Steps for Static Logos

Create or obtain a graphic image file in one of the recognized formats. Decide whether to use a separate key file.

- ▲ A separate key file is recommended, except for Targa files. MasterLogo assumes that your Targa file has 24-bit RGB color and an 8-bit alpha channel. (A Targa file generated from Photoshop, for example, might not.)

If you use a separate key file, it must reside in the same folder as the image (fill) file and its name must be the same as the image file's name but with "key" added at the end of the name. For example, if your logo fill file is "logoNV.tif," the matching key file should be named "logoNVkey.tif."

If you do not use a separate key file, then you must use the luminance from the fill file to create the key. (In MasterLogo, choose 'Tools > Use Luminance...!') When you choose this option, MasterLogo does not look for a key file, and will ignore the key if it is present.

### Preliminary Steps for Animated Logos

Decide the how long the animation is to be. The MCPM displays one animation file for each video frame. The length of your animation is a function of the number of files you create and the frame rate of the target video output. At 30 fps, a 2-second animation requires 60 Targa files.

- ▲ Prior to software revision 6.3.1, animations were limited to 256 frames. At software revision 6.3.1, an MCE's animations may be up to 900 frames. Animations in other MCPMs are still limited to 256 frames.
- ▲ For MCPMs other than MCEs, the first logo in the Logo Images list in MasterConfig **must not** be an animation because it is to reside (by itself) in flash memory.

Decide whether the animation will loop and, if it does, how much of a delay you want before the animation repeats.

Create or obtain a set of animation files. The preferred type for animations is Targa format. MasterLogo assumes that your Targa files have 24-bit color and 8-bit alpha channels. The animation files must all be in the same folder, and have identical names except that the files must be sequentially numbered, the number coming at the end of the file name:

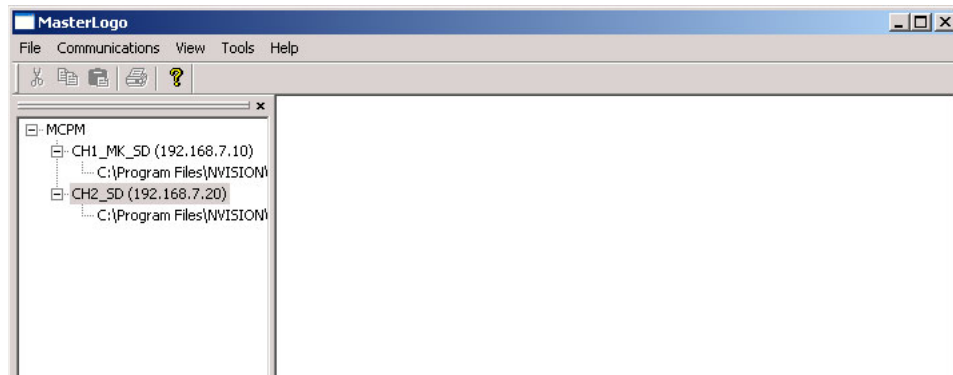
anim01.tga, anim02.tga, anim03.tga, anim04.tga, ...

Gaps must not exist in the sequence. If a gap occurs, MasterLogo assumes that it terminates the sequence.

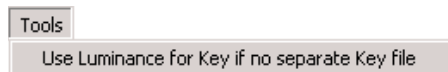
## Creating a Static Logo

Follow these steps to create a logo:

- 1 Launch MasterLogo.

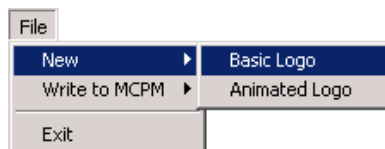


- 2 In the 'Tools' menu, ensure that the setting of the luminance key toggle matches the logo file(s) you want to open:

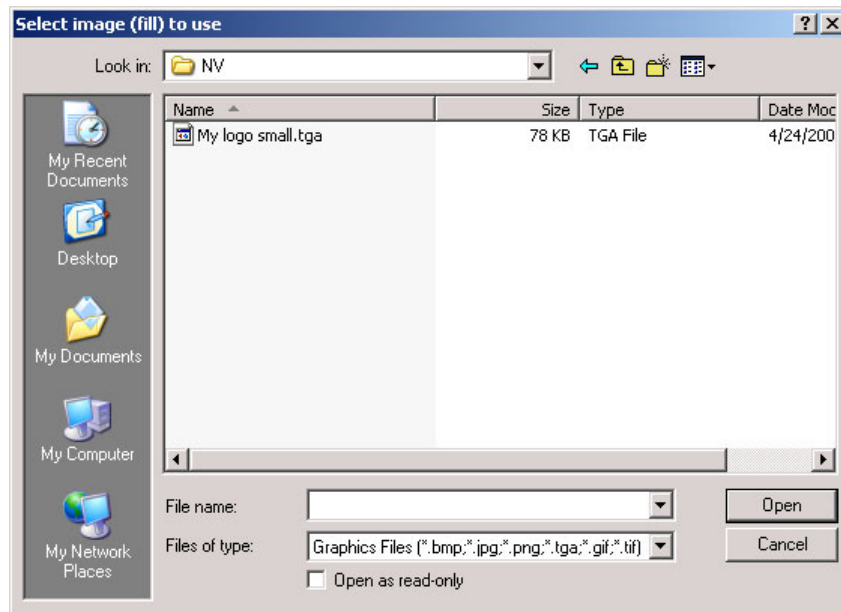


Check "Use Luminance..." item if you have no key file. Leave the option unchecked for Targa files.

- 3 Select File > New > Basic Logo to open a static file.

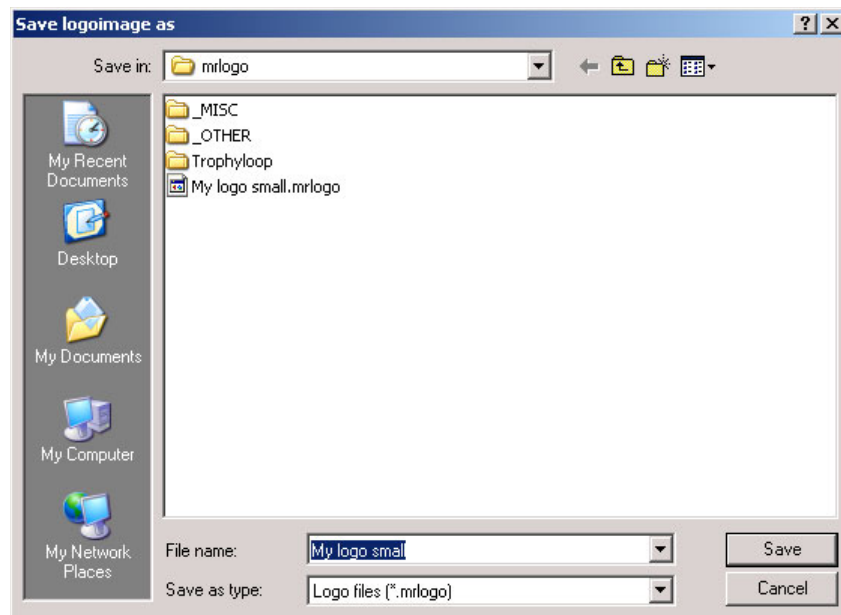


A "Select image (fill) to use" dialog appears:



Browse to the location of the logo image file(s). Select the fill file and click 'Open'. If the logo requires a key file, MasterLogo looks for it. If it does not find a key file, it issues a warning and tells you it will use luminance from the fill file as the key.

4 After a moment, a "Save logoimage as" dialog opens:



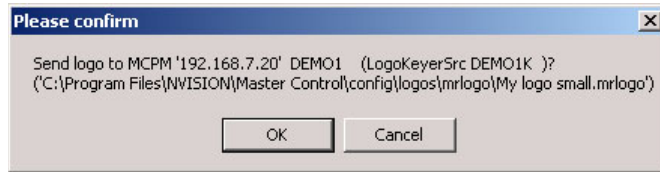
Enter the name for the processed logo file. Its extension must be **.mrlogo**.

▲ We recommend saving .mrlogo files in the default location:

C:\Program Files\NVISION\MasterControl\config\logo\mrlogo\



5 A confirmation alert appears:



Click 'OK' to proceed.

6 Finally, an 'Info' message displays the details of the static logo created:

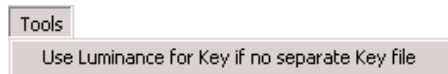


Click 'OK'. The logo is ready to upload.

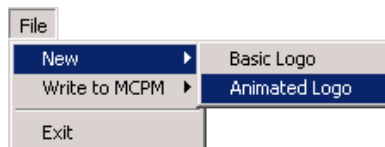
## Creating an Animated Logo

Follow these steps to create a logo:

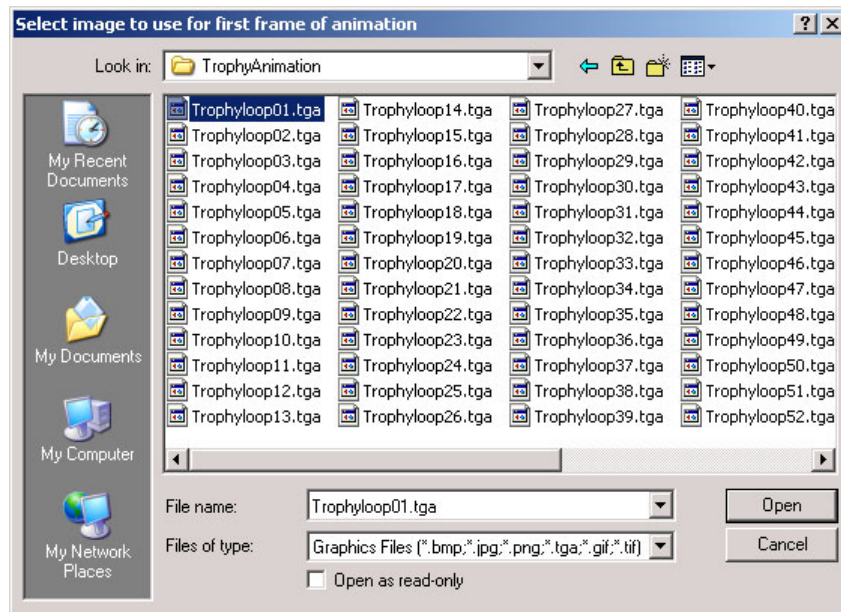
- 1 Launch MasterLogo.
- 2 In the 'Tools' menu, ensure that the luminance key toggle is off (unchecked):



- 3 Select 'File > New > Animated Logo' to open an animated logo.



A "Select image to use for first frame of animation" dialog appears:

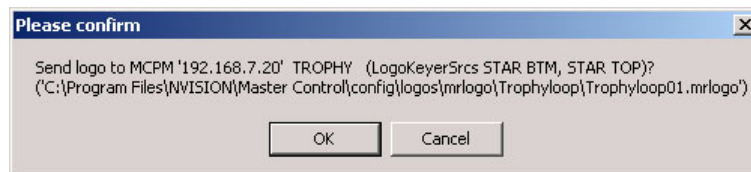


Browse to the location of the animation file(s). Select the file whose name ends in "01" and click 'Open'.

MasterLogo then displays this dialog asking you to name the animation:



The suggested name is the base name of the animation file set. MasterLogo creates a folder of the name you specify. MasterLogo will then ask you whether you really want to create the animation files:



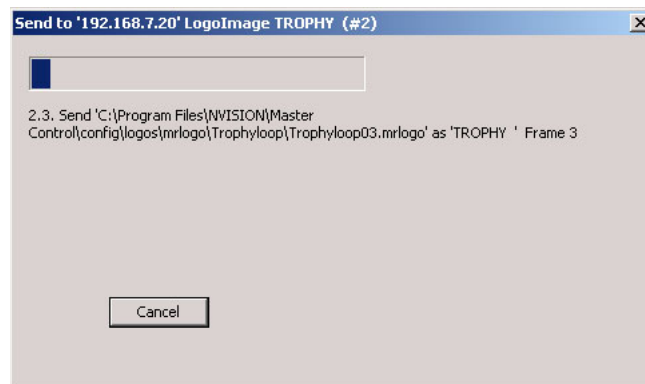
Click 'Yes' to create the files.

The names of the files in the folder are the same as the folder's name with numbers at the end. The extension for the file names is **.mrlogo**.

- ▲ If you do not select the first file in the animation sequence, the result will be a shorter sequence. For example, if you clicked the third file (out of 30 files), MasterLogo will create an animation of 28 files. The file numbered 01 matches your number 03 Targa file and file number 28 matches your number 30 Targa file.)

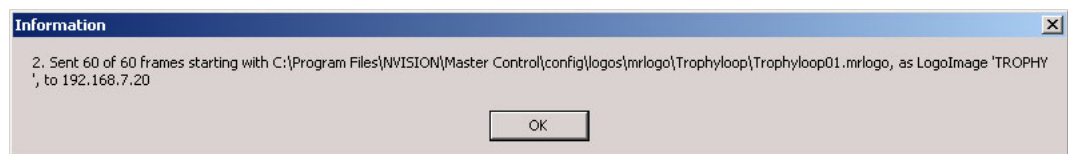
- ▲ If MasterLogo finds a gap in the sequence, it stops at the file with the highest number before the gap. For example, if the '05' file is missing from a sequence of 01–60, MasterLogo creates an animation of the first 4 files only.

4 Processing time depends on PC performance and animation length and complexity. You will see a progress display:



Click 'Cancel' to terminate the operation before it completes.

5 At completion, the progress panel disappears and a confirmation appears:



The animation is ready for you to upload to the selected MCPM.

## Uploading Logos to the MCPM

You can upload either a single logo (animated or static) or all logos. “All logos” means all the logos you have associated with logo names in the target MCPM.

Keep in mind the following points:

- A maximum of 64 logo files may be loaded into the MCPM memory, subject to the limits of logo memory.
- Logo file storage.

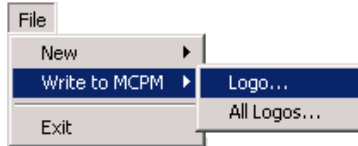
For MCPM that are not MCEs, the first logo image is stored in non-volatile flash memory; all other logo files are stored in RAM and will be lost when the MCPM restarts. The first logo image is defined as the first entry in MasterConfig's Logo Images table. All other logo images must be uploaded to the MCPM every time power is lost or the MCPM is reset. (The first logo must not be an animation.)

### Single Logo

To write *one* logo to the MCPM follow these steps:

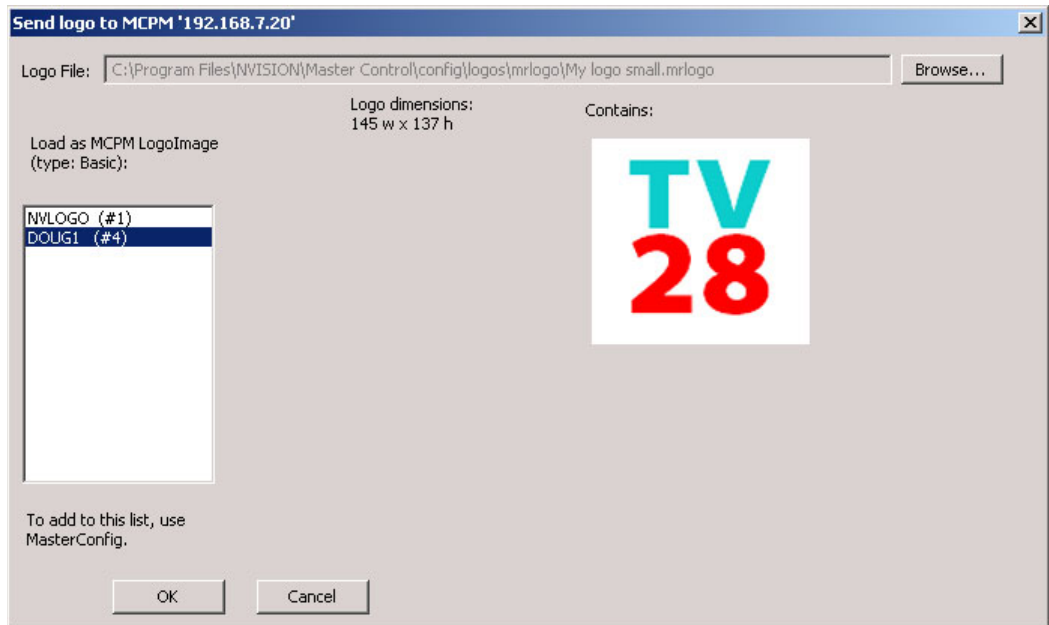
- 1 Make sure that MasterConfig has an entry and settings for the logo you want to transfer. The configuration that includes the logo must have been loaded in the target MCPM.
- 2 Launch MasterLogo.

- 3 Set (or choose) the IP address of the MCPM to which you want to add the logo.  
There are several ways to select an MCPM. See [Selecting MCPMs and MCEs](#) on page 24.
- 4 Select File > Write to MCPM > Logo....



If you have not designated an IP address (to select an MCPM), MasterLogo prompts you for one. Enter the target MCPM's IP address and click OK.

- ▲ Be sure you are not writing a logo to the wrong MCPM!
- 5 After a moment, a list of logo image names appears:



(MasterLogo reads in the list of basic logo images from the target MCPM. Animations are not included in this list.)

Choose the logo image name with which you wish to associate your logo file.

MasterLogo displays the pathname of the logo file that it will send. If you wish to select another logo file, click 'Browse' to display a window in which to select another file. (Valid logo files have the extension mrlogo.) Click 'Open' when you have chosen a file.

Finally, click 'OK' in the 'Send logo' window. MasterLogo sends the logo across the master control network to the MCPM.

- ▲ It is this step that associates the logo image name in the MCPM's configuration with the logo file. You must perform this step only once. Thereafter, both MasterLogo and Master-Config can automatically upload your logo(s) to the MCPM. You can change the association at any time.

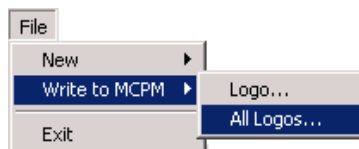
## All Logos

Writing logos to an MCE is different from writing logos to other MCPMs. (All logo storage in MCEs is non-volatile.)

## MCPMs

To write *all* logos to an MCPM, follow these steps:

- 1 Make sure that MasterConfig has entries and settings for the logos you want to transfer.
- 2 Launch MasterLogo.
- 3 Set (or choose) the IP address of the MCPM to which you want to add the logo.  
There are several ways to select an MCPM. See [Selecting MCPMs and MCEs](#) on page 24.
- 4 Select File > Write to MCPM > All Logos....



If you have not designated an IP address (to select an MCPM), MasterLogo prompts you for one. Enter the target MCPM's IP address and click OK.

- ▲ Be sure you are not writing the logos to the wrong MCPM!

- 5 The "Send these logos" dialog appears:

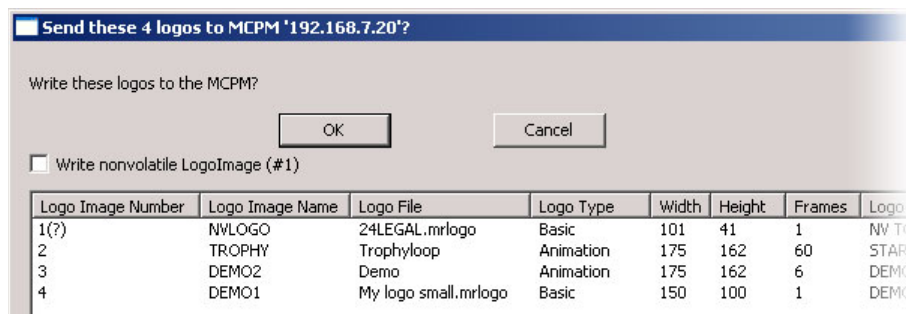


Fig. 1-1: Left Side of the Display

This is an information display only. The one option you have is whether to write logo 1 to non-volatile memory (flash) or to skip writing it. In this example, Master Control will send 3 logos, two of which are animations. It will not send logo 1.

(Logo 1 always resides in flash within the MCPM and will remain there forever unless you want to change it. It is not necessary to load logo 1 every time you load all logos. It also take a extra time to load it because flash updates more slowly than RAM.)

Click 'OK' if you want to send these logos. Click 'Cancel' if you do not.

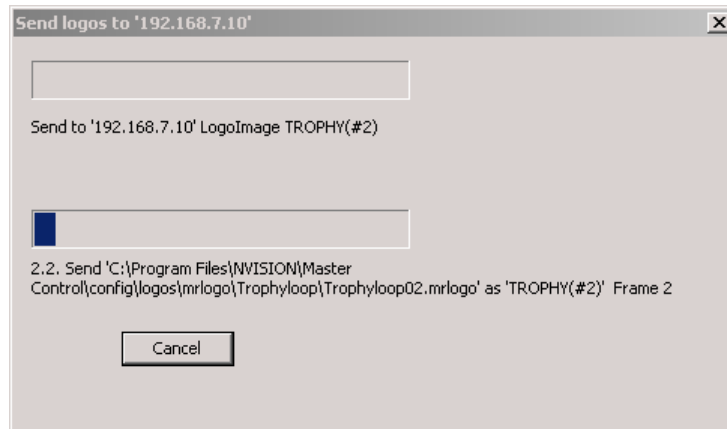
The display has many (adjustable) columns. The columns on the left include:

Logo Image Number	The logo selection numbers as defined in MasterConfig.
Logo Image Name	The logo names as given in MasterConfig.
Logo File	The base name of the logo file. The base name of an animation is presented without any sequence number.
Logo Type	Either "Basic" or "Animation."

Width, Height	The size of the logo, in pixels.
Frames	The number of frames in the logo. Static logos have only one frame.
Logo Keyer Source(s)	The keyer settings that use the particular logo. There could be more than one.
Complete logo file name and path	The pathname of the logo image. Pathnames are contained in the .XML file for this MCE's logos.

---

Finally, when you click 'OK', MasterLogo displays a progress panel:



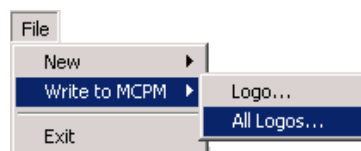
Click 'Cancel' if you want to terminate the transfer before it completes.

- 6 After some time passes (it might be several minutes, depending on the number and complexity of the logos), the logos will have been transferred across the network and the progress panel disappears.

## MCEs

To write *all* logos to an MCE, follow these steps:

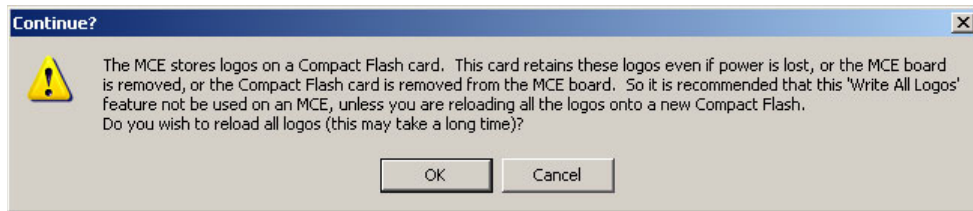
- 1 Make sure that MasterConfig has entries and settings for the logos you want to transfer.
- 2 Launch MasterLogo.
- 3 Set (or choose) the IP address of the MCE to which you want to add the logo.  
There are several ways to select an MCE. See [Selecting MCPMs and MCEs](#) on page 24.
- 4 Select File > Write to MCPM > All Logos....



If you have not designated an IP address (to select an MCE), MasterLogo prompts you for one. Enter the target MCE's IP address and click OK.

- ▲ Be sure you are not writing the logos to the wrong MCE!

Because writing logos to an MCE takes a long time and it is usually not necessary, MasterLogo displays this message:



Click 'OK' if you really want to write all logos or click 'Cancel' if you do not.

5 If you clicked 'OK' in step 4, the "Send these logos" dialog appears:

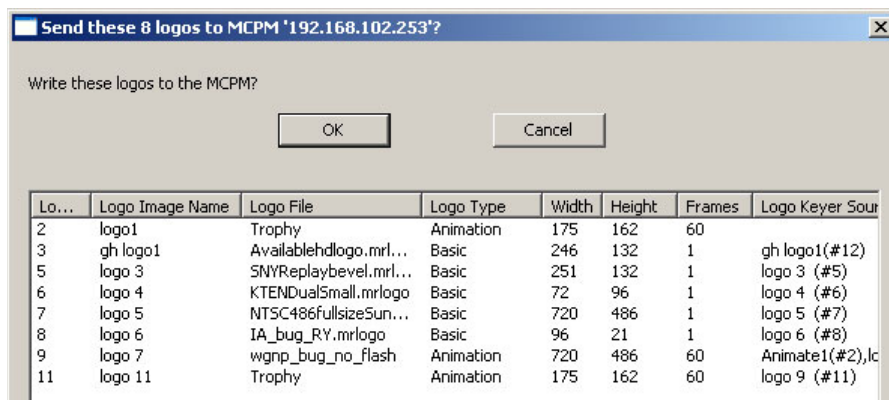


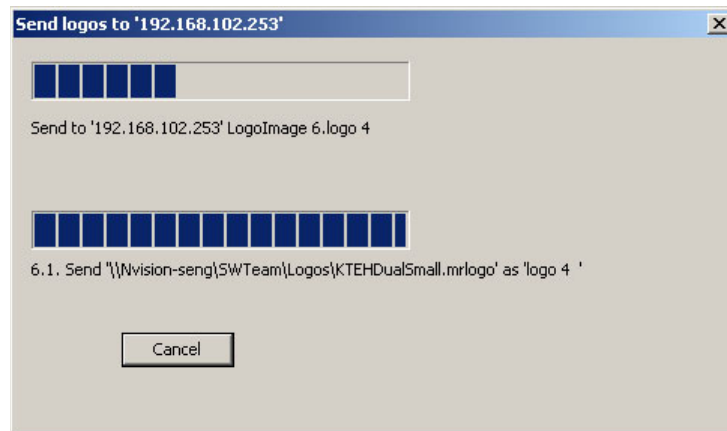
Fig. 1-2: Left Side of the Display

This is an information display only. Click 'OK' if you want to send these logos. Click 'Cancel' if you do not.

The display has many (adjustable) columns. The columns on the left include:

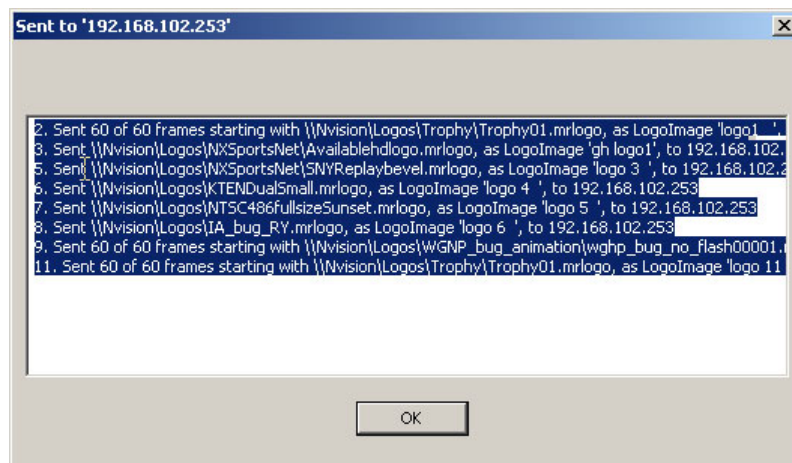
Logo Image Number	The logo selection numbers as defined in MasterConfig.
Logo Image Name	The logo names as given in MasterConfig.
Logo File	The base name of the logo file. The base name of an animation is presented without any sequence number.
Logo Type	Either "Basic" or "Animation."
Width, Height	The size of the logo, in pixels.
Frames	The number of frames in the logo. Static logos have only one frame.
Logo Keyer Source(s)	The keyer settings that use the particular logo. There could be more than one.
Complete logo file name and path	The pathname of the logo image. Pathnames are contained in the .XML file for this MCE's logos.

Finally, when you click 'OK', MasterLogo displays a progress panel:



Click 'Cancel' if you want to terminate the transfer before it completes.

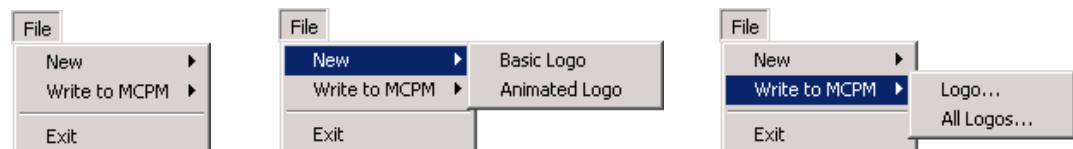
- 6 After some time passes (it might be several minutes, depending on the number and complexity of the logos), the logos will have been transferred across the master control network and the progress panel disappears. A confirmation panel appears:



Click 'OK' to dismiss it.

## Other Topics

### File Menu



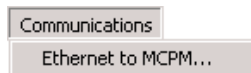
Choose 'New' to create a new logo from a graphics file. You can create a basic (static) logo or an animation.



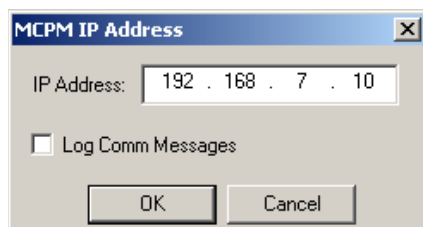
Choose 'Write to MCPM' to upload a logo to the MCPM. You can upload a single logo or all logos. See [Uploading Logos to the MCPM](#) on page 11 for information.

Click 'Exit' to close and leave MasterLogo.

## Communication Menu

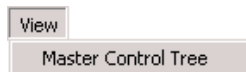


Choose 'Ethernet to MCPM...' to specify the IP address of the MCPM with which you want to work. MasterLogo displays the following dialog in which to enter the IP address:



By checking 'Log Comm Messages', you can create a log file of messages between the MCPM and your PC. When you check the option, MasterLogo displays a browser dialog in which you can choose the folder and file in which to keep the log.

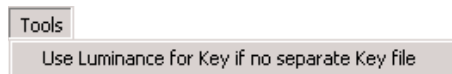
## View Menu



Click 'Master Control Tree' to display the MCPM list. (The list mimics the appearance of a Windows directory tree, with expandable and collapsible entries.) The command is not a toggle. To close the tree area, click the small X in its upper right corner. You can resize the tree area by dragging its right-hand border to the right or left.

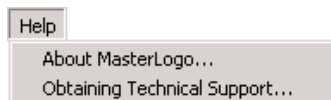
You might have to populate the MCPM list, at least initially. See [Selecting MCPMs and MCEs](#) on page 24.

## Tools Menu



Check 'Use Luminance for key if no separate key file' when there is no separate key file for the logo. Leave the option unchecked otherwise.

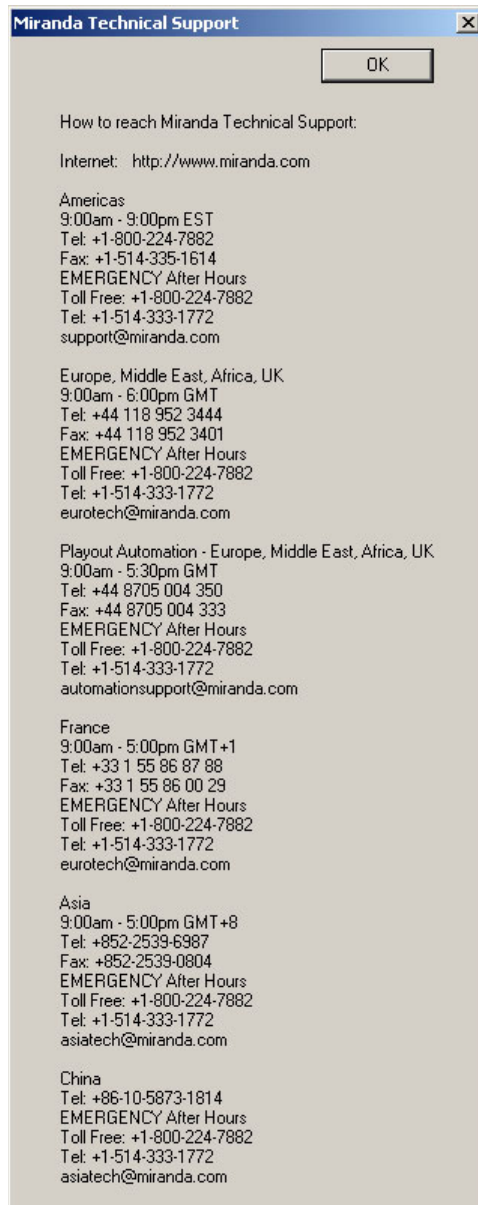
## Help Menu



The 'Help' menu does not actually provide help, but it identifies the product revision:



and tells you how to reach Miranda technical support:



## Notes

The current revision of MasterLogo revision is 7.2.9.0.

Adobe Photoshop is an excellent image processing tool, especially for creating masks (or keys). It can save files in many formats, including PNG, JPEG, TGA, BMP, TIF, and GIF formats. Not all its formats or variations of formats are necessarily acceptable or useful to MasterLogo. If you are using Photoshop, verify that its output can be used by MasterLogo.

Photoshop can save 16-bit, 24-bit, and 32-bit Targa files. You want 24-bit color with an 8-bit alpha channel.

There are many variations of GIF format.

## Tip

Here is a straightforward way to generate a mask (or key) in Photoshop.

- 1 Create or acquire artwork (layered or not). A transparent background works best.
- 2 Select the art using any of the Photoshop tools and techniques you prefer. Your selection will become the mask. The selection or portions of it can be feathered.
  - ▲ It is not always easy to make a good selection. It is not always easy to predict the effect a mask will have on the resulting video. You can try again or you can edit the mask afterwards.
- 3 Having a selection, click the "quick mask mode" icon in the toolbar. Your selection will turn color (typically reddish) and the "marching ants" selection lines disappear.
- 4 Go to the channels palette (switching away from the layers palette). Clear all channels except the Quick Mask channel. Select all.
- 5 Switch back to the layers palette. Be sure quick mask mode is off. Now paste your selection from the Quick Mask channel. It should become a new layer.
- 6 The new layer can be used as a mask. Post-process the mask as you require. Remember that, to MasterLogo, white selects and black masks (and grays are proportionally in between). You might need to invert your mask.

## Troubleshooting

The following is a list of common problems with logos:

<b>Problem</b>	<b>Possible Solution</b>
MasterLogo does not recognize a key file.	Luminance key mode enabled. Uncheck 'Use Luminance' in the Tools menu.  Rename the "key" file according to convention. If the fill file name is "ABC," then the key file must be named "ABCkey."
After writing logos to the MCPM, they are not visible when placed on-air.	Required configuration settings are missing. Review the settings in MasterConfig's 'Logo Images' and 'Logo Key Sources' pages.
Keyed logo does not appear as expected.	Check the type and structure of your original graphic file(s). Be sure that the luminance key mode is set properly.  Examine the gain, clip, and opacity settings in MasterConfig's 'Logo Key Sources' page.

Chapter 2 provides miscellaneous information about MasterLogo.

## Topics

<i>Installation</i> .....	21
<i>PC Configuration</i> .....	22
<i>Selecting MCPMs and MCEs</i> .....	24

## Installation

The assumption in this guide is that your software was already installed. If you need to install the software, the process is simple:

- 1 Obtain the master control 7.2.9.0 software installation CD. (That has part number SB0243.) Insert the disk in your CD drive. After a few seconds, the auto-run application will launch. Use its buttons to select and operate the installer.  
(You may also browse the CD directory and double-click InstallConfig.msi, which will then start and wait for your input.)
- 2 When the installer is running, follow the instructions given, clicking 'Next' as you proceed to move from step to step. The entire installation process takes less than a minute.  
If you have any existing Miranda master control software, you must remove it before you can install new master control software.

- 3 Create a desktop shortcut (if you wish) for MasterLogo. Its default pathname is

C:\Program Files\Miranda\Master Control\bin\MasterLogo.exe

The default path in the Windows Start menu is:

Programs > Miranda > Master Control > MasterLogo - Convert and Load Logos into MCPM

Documentation, including this manual, is available on either CD.

To launch MasterLogo, (1) choose the application from the Windows Start menu, (2) double-click the application in its folder, or (3) double-click its desktop shortcut.

- ▲ Reinstallation does not overwrite any of *your* configuration files, but it might overwrite the ones installed as defaults in the master control folder, such as `cecp_gui.uicfg`. To be safe, save a copy of your old configuration files before installing new master control software.

Configuration files stored outside the master control folder are never affected.

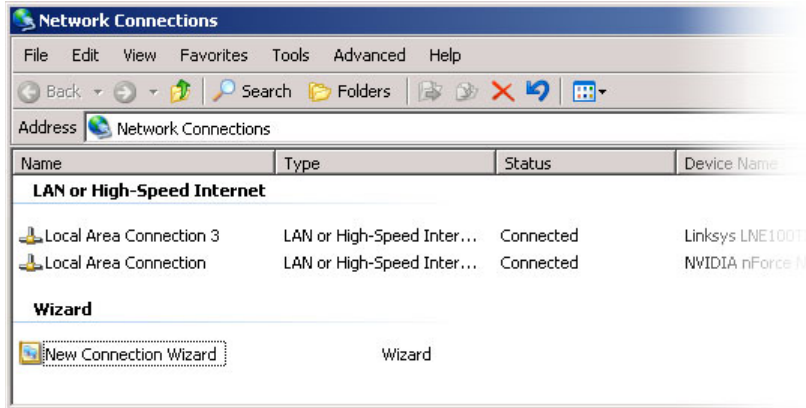
- ▲ If you delete the old master control folder before reinstalling new software, you might inadvertently lose certain important files. In particular, you could lose the .XML files that support MasterLogo and MasterConfig.

## PC Configuration

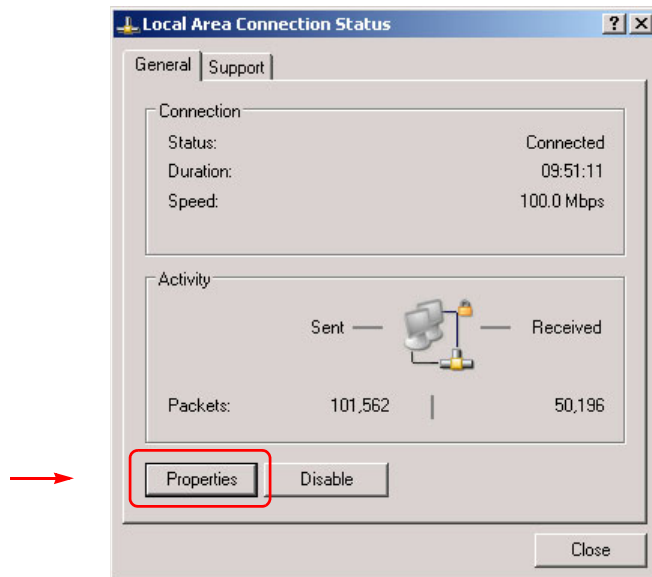
You (or your system administrator) must connect the PC on which your software runs to the master control network. To do that, you must assign the PC an IP address (and mask) on the NIC that connects the PC to the master control network. (The PC must also be connected to the Ethernet switch of the network.)

Follow these steps to set the IP address of your PC:

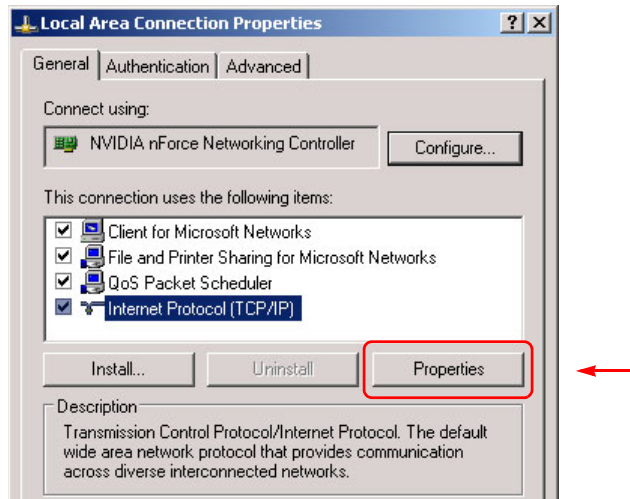
- 1 Launch 'Settings>Network Configuration' from you PC's Start menu. The following window appears:



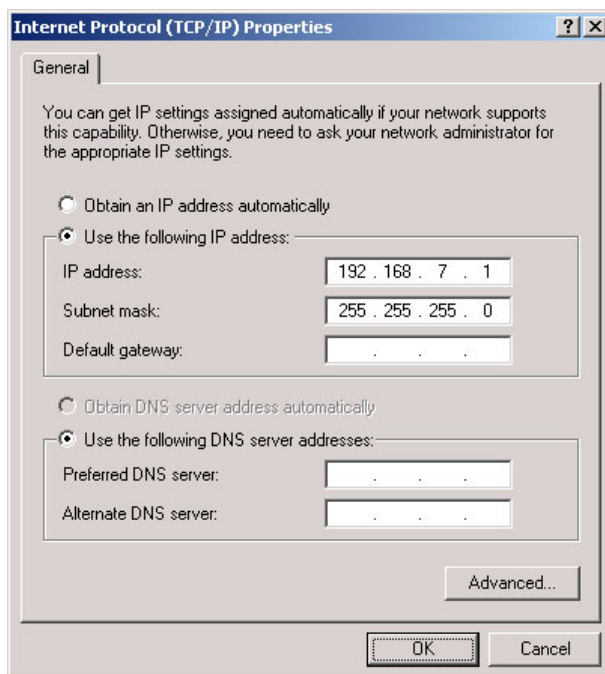
- 2 Double-click the appropriate 'Local Area Connection' for your master control network. Then, choose the General tab and click 'Properties'.



3 Select Internet Protocol (TCP/IP). Click 'Properties' again here:



4 Select 'Use the following IP address' and enter an IP address for your PC. Use the default subnet mask.



The IP address must be unique on the network. (The subnet mask must be 255.255.255.0.)

5 Click OK and it is done. Close all the Network Connections windows.

## Selecting MCPMs and MCEs

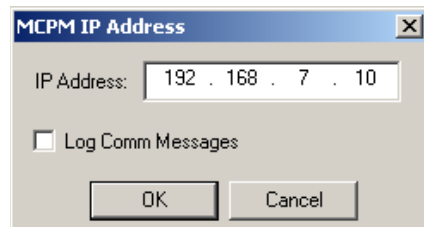
To upload logos to an MCPM, you must select the MCPM. There are two ways:

- Through the IP address dialog.
- In the MCPM “tree” area.

(MCEs are MCPMs with advanced architecture and are included in the MCPM “tree.”)

### IP Address Dialog

Choose ‘Ethernet to MCPM...’ from the ‘Communication’ menu to display a dialog in which to enter an IP address.

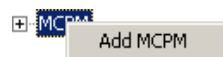


Consult your system administrator if you need to obtain the IP addresses for MCPMs in your system.

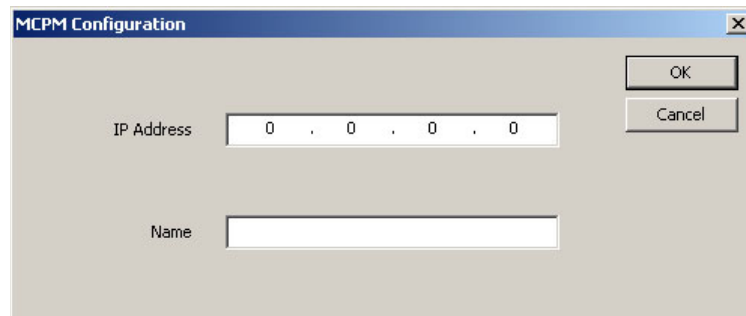
### MCPM Tree Area

Choose ‘Master Control Tree’ from the ‘View’ menu to display the MCPM list, if it is not already displayed. To select an MCPM, simply click the list entry for the MCPM in the MCPM list.

The first time you use MCPM list, it will probably be empty. To add an MCPM to the list, right-click the word MCPM at the top of the tree area and then click the ‘Add MCPM’ button:



The MCPM Configuration dialog appears.



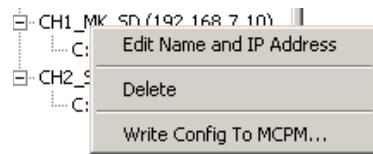
Enter the IP address and optionally a name for the MCPM.

- ▲ You can create list entries for MCPMs that do not (yet) exist, although you cannot write to non-existent MCPMs.

Consult your system administrator if you need to obtain the IP addresses for MCPMs in your system.



You can change any MCPM in the list by right-clicking it and choosing an option:



You may re-enter the MCPM's IP address and name or delete the MCPM from the list.

Click 'Write Config to MCPM...' to upload configuration data from a file to the MCPM.

- ▲ The configuration is one created in MasterConfig. A configuration is often, but not always associated with the MCPM list entry in MasterLogo's tree area.

### XML Files

The MCPM list in the tree area is supported by an XML file in the Master Control program folder.

Both MasterLogo and MasterConfig share the XML file. After the list has been populated in MasterConfig, it will appear automatically in MasterLogo's tree area. The reverse is true. After the list has been populated in MasterLogo, it will appear automatically in MasterConfig's tree area.

Occasionally the MCPM list will have been created on someone else's computer. If the list is large, it might be worth your while to obtain the XML file from the other PC. If you copy the list to your program folder, MasterLogo and MasterConfig will automatically display the MCPM list.

The default pathname of the XML file on any PC is:

```
C:\Program Files\Miranda\Master Control\config\system\mcpm.xml
```

The location of your software might be different. In any case, the subfolder `config\system` is where to find the XML file and where it must reside for proper operation.

Ensure that there is an `mcpm.xsd` file in that same folder. If you have no such XSD file, you might have to reinstall the master control software.

- ▲ You will probably find other XML (and XSD) files in that folder. Do not remove these files unless you are sure of what you are doing.



# Index

## Symbols

.bmp (file format)	2
.gif (file format)	3
.jpg (file format)	2
.mrlogo, file extension	8, 10, 12
.png (file format)	2
.tga (file format)	
see Targa files	
.tif (file format)	2

## A

Adding an MCPM	24
Address, IP	12–14, 17, 22–24
Adobe (Photoshop)	19
Africa, contact	31
Agreement, license	iii
Alpha channel	6
Americas, contact	31
Animated logos	1–2, 6, 9
Asia, contact	31

## B

Bitmap, BMP	2
BMP files	2, 19

## C

cautions	v
CE	ii
change history	ii
Channel, alpha	6
Chapters	
1, MasterLogo	1
2, Misc.	21
China, contact	31
Communication menu	17, 24
Communication>Ethernet to MCPM...	17
Configuration PC	22
Contact Miranda	31
Corporate office, contact	31
Creating a logo	4, 7, 9

Creating a new logo	16
Customer support	31

## D

Declaration of Conformance	ii
Document	
notice of use	ii
part number	ii
revision	ii

## E

E-mail address	31
Ethernet to MCPM (command)	17
Europe, contact	31
Exit (command)	17

## F

Fax number	31
FCC statement	ii
File extension	8, 10, 12
File menu	16
File>exit	17
File>new	7, 9, 16
File>write to MCPM	17
Fill, logo	2, 6, 8
Flash memory	1, 6
Flip-book format, Targa	2–3
Format	
BMP	2, 19
GIF	3, 19
JPEG, JPG	19
PNG	2
TGA	3, 6, 19
TIF	2, 19
Formats	
graphic files	2
France, contact	31

**G**

- GIF files ..... 3, 19
- Graphic file formats ..... 2
- Graphic files ..... 3
- Graphics Interchange Format, GIF ..... 3

**H**

- Hardware symbols ..... iv
- Hazardous substance ..... iii
- Help menu ..... 17
- hours of operation ..... 31

**I**

- Installation ..... 21
  - MasterLogo ..... 3
  - SB0221 disk ..... 3
- Internet Protocol (TCP/IP) ..... 23
- IP address ..... 12–14, 17, 22–24

**J**

- JPEG (JPG) files ..... 2, 19

**K**

- Key, logo ..... 2, 6, 17, 19

**L**

- Launching MasterLogo ..... 3
- license ..... iii
- Limits for logos ..... 1
- List of MCPMs ..... 24–25
- Local Area Connection ..... 22
- Log comm messages (checkbox) ..... 17
- Logo
  - basics ..... 2
  - fill ..... 2, 6, 8
  - graphic files ..... 3
  - images ..... 4
  - images window, MasterConfig ..... 5, 11, 20
  - key ..... 2, 6, 17, 19
  - key sources window, MasterConfig ..... 20

- key sources window, MasterConfig ..... 5
- limits ..... 1
- RAM ..... 1–2, 4, 11
- storage ..... 1–2, 11
- Logo, new ..... 16
- Logos
  - animated ..... 1–2, 6, 9
  - creating ..... 4, 7, 9
  - static ..... 1, 6–7
  - uploading ..... 5, 11
- Loss of power ..... 1
- Luminance ..... 3, 6, 9, 17

**M**

- Managing logo images ..... 4
  - Master control tree (command) ..... 17, 24
  - MasterConfig ..... 1–2, 4–6, 11, 20, 25
  - MasterLogo
    - installation ..... 3
    - launching ..... 3
    - summary ..... 1
    - usage ..... 3
  - MasterLogo, executable file ..... 3, 21
  - MCPM
    - adding ..... 24
    - flash memory ..... 1
    - list ..... 24–25
    - logo storage ..... 1–2
    - memory ..... 5, 11
    - selecting ..... 17, 24
    - writing to ..... 4, 12–14, 17, 25
  - Memory ..... 1–2, 4–6, 11
  - Menus ..... 16
    - communication ..... 17, 24
    - file ..... 16
    - help ..... 17
    - tools ..... 7, 17
    - view ..... 17, 24
    - Windows start ..... 3, 21
  - Middle East, contact ..... 31
  - Miranda technical support ..... 18
  - Miranda, contact ..... 31
- N**
- Network Configuration ..... 22
  - Network Connections ..... 23
  - New (command) ..... 7, 9, 16
  - Notes ..... 19
  - Notice, use ..... ii

## O

Office hours .....	31
Other topics .....	16

## P

part number, document .....	ii
PC Configuration .....	22
Phone numbers .....	31
Photoshop .....	6, 19
tip .....	19
PNG files .....	2
Portable Network Graphic, PNG .....	2
Power cycle .....	1
Power loss .....	1

## Q

Quick mask (Photoshop) .....	19
------------------------------	----

## R

Restrictions .....	iii
Revision, document .....	ii
RoHS .....	iii

## S

Safeguards .....	iii
Safety notices .....	iii
Save logoimage as (dialog) .....	8
SB0221 installation disk .....	3
Select image to use for first frame of animation (dialog) .....	10
Selecting an MCPM .....	17, 24
Send these logos (dialog) .....	13, 15
Settings, Windows .....	22
Shortcuts .....	3
Software license .....	iii
Start menu, Windows .....	3, 21
Starting MasterLogo .....	3
Static logos .....	1, 6–7
Summary, MasterLogo .....	1
Support, contact .....	31

Symbols, meaning .....	iv
------------------------	----

## T

Tagged Image File, TIF .....	2
Targa	
flip-book format .....	2–3
Targa files, TGA .....	2–3, 6, 19
technical support .....	31
TIF files .....	2, 19
Tip, PhotoShop .....	19
Tools menu .....	7, 17
Tools>Use Luminance .....	17
Trademarks .....	iii
Transparency .....	3
Tree, master control .....	17, 24–25
Troubleshooting .....	20

## U

United Kingdom, contact .....	31
Uploading logos .....	5, 11
Usage .....	3
Use Luminance... (command) .....	6–7, 17

## V

View menu .....	17, 24
View>master control tree .....	17

## W

Warnings, hardware .....	iv
Warranty .....	iii
Web site .....	31
Windows	
settings .....	22
Start menu .....	3, 21
Write Config to MCPM... (command) .....	25
Write to MCPM... (command) .....	4, 12–14, 17

## X

XML files .....	4, 25
-----------------	-------





## Miranda Technical Support

For technical assistance, please contact the Miranda Technical Support center nearest you:

### Americas

Office hours: 9:00 a.m. – 9:00 p.m. (EST)  
Telephone: +1-800-224-7882  
Fax: +1-514-335-1614  
E-mail: techsupp@miranda.com

### Asia

Office hours: 9:00 a.m. – 5:00 p.m. (GMT+8)  
Telephone: +852-2539-6987  
Fax: +852-2539-0804  
E-mail: asiotech@miranda.com

### Europe, Middle East, Africa, UK

Office hours: 9:00 a.m. – 6:00 p.m. (GMT)  
Telephone: +44 118 952 3444  
Fax: +44 118 952 3401  
E-mail: eurotech@miranda.com

### China

Telephone: +86-10-5873-1814  
E-mail: asiotech@miranda.com

### France

Office hours: 9:00 a.m. – 5:00 p.m. (GMT+1)  
Telephone: +33 1 55 86 87 88  
Fax: +33 1 55 86 00 29  
E-mail: eurotech@miranda.com

## Corporate Head Office

Miranda Technologies Inc.

3499 Douglas-B.-Floreani, St-Laurent, Quebec, Canada H4S 2C6

Telephone: 514-333-1772  
Fax: 514-333-9828  
Web: [www.miranda.com](http://www.miranda.com)



---

A **BELDEN** BRAND