

# FeedClip

INTERACTIVE INGEST TOOL

User Guide

SOFTWARE VERSION 5.0

071831100  
APRIL 2004

*the most watched worldwide*

# FeedClip

INTERACTIVE INGEST TOOL

User Guide

SOFTWARE VERSION 5.0

071831100  
APRIL 2004

*the most watched worldwide*

## Copyright

Copyright © 2004 Thomson Broadcast and Media Solutions, Inc. All rights reserved. Printed in the United States of America.

This document may not be copied in whole or in part, or otherwise reproduced except as specifically permitted under U.S. copyright law, without the prior written consent of Thomson Broadcast and Media Solutions, Inc., P.O. Box 59900, Nevada City, California 95959-7900

## Trademarks

ContentShare, Grass Valley, NewsEdit XT, NewsQ, NewsQ Pro, NewsShare, Media Manager, and Profile are either registered trademarks or trademarks of Thomson Broadcast and Media Solutions in the United States and/or other countries. Other trademarks used in this document are either registered trademarks or trademarks of the manufacturers or vendors of the associated products. Thomson Broadcast and Media Solutions products are covered by U.S. and foreign patents, issued and pending. Additional information regarding Thomson Broadcast and Media Solutions' trademarks and other proprietary rights may be found at [www.thomsongrassvalleygroup.com](http://www.thomsongrassvalleygroup.com).

## Disclaimer

Product options and specifications subject to change without notice. The information in this manual is furnished for informational use only, is subject to change without notice, and should not be construed as a commitment by Thomson Broadcast and Media Solutions. Thomson Broadcast and Media Solutions assumes no responsibility or liability for any errors or inaccuracies that may appear in this publication.

## U.S. Government Restricted Rights Legend

Use, duplication, or disclosure by the United States Government is subject to restrictions as set forth in subparagraph (c)(1)(ii) of the Rights in Technical Data and Computer Software clause at DFARS 252.277-7013 or in subparagraph c(1) and (2) of the Commercial Computer Software Restricted Rights clause at FAR 52.227-19, as applicable. Manufacturer is Thomson Broadcast and Media Solutions, Inc., P.O. Box 59900, Nevada City, California 95959-7900 U.S.A.

## Revision Status

Rev Date	Description
April 16, 2004	Release 071-8311-00 for Software Version 5.0

# Contents

---

## Preface

Grass Valley Product Support . . . . .	7
Safety Summaries . . . . .	9
Safety Terms and Symbols. . . . .	11
Service Safety Summary . . . . .	12
Certifications and Compliances . . . . .	13
Environmental Criteria . . . . .	16

## Chapter 1

### Introducing FeedClip

What is FeedClip? . . . . .	18
Quick Overview of Creating Clips with FeedClip . . . . .	19
Tour of the FeedClip Window . . . . .	20
The Viewer Window . . . . .	22
The Record Tab . . . . .	23
The Playback Tab . . . . .	24
The Scheduler Tab . . . . .	25
Working in Shared or Local Mode . . . . .	26
Navigating in FeedClip . . . . .	27
Using the Mouse . . . . .	27
Using the Keyboard . . . . .	27
Using the Shortcut Menus . . . . .	27
Tour of the FeedClip Keyboard. . . . .	28
The Record Button . . . . .	28
Mark Point Buttons . . . . .	28
Transport Control Buttons . . . . .	29
Other FeedClip Buttons . . . . .	29

## Chapter 2

### Scheduling Feeds For Recording

Tour of the Scheduler Tab . . . . .	32
Toolbar . . . . .	33
Understanding the Scheduler List Colors . . . . .	34
Enabling the Scheduler. . . . .	35
Adding New Entries . . . . .	36
Modifying Entries . . . . .	40
Editing Entries . . . . .	40
Disabling Scheduled Events . . . . .	40
Scheduling Recurring Events . . . . .	41
Adding a New Entry . . . . .	41
Editing an Entry . . . . .	44
Removing an Entry . . . . .	44
Using the Context-Sensitive Scheduler Menu . . . . .	45



---

## Contents

<b>Chapter 3</b>	<b>Recording Feeds and Creating Clips</b>	
	Tour of the Record Tab . . . . .	48
	Recording a Feed . . . . .	49
	Adjusting Audio Input . . . . .	51
	Adjusting the Volume . . . . .	51
	Muting Audio Channels . . . . .	51
	Creating a Playlist While Recording . . . . .	52
	Using the Auto-Mark Feature . . . . .	53
	Rearranging Your Playlist . . . . .	53
	Reordering Clips . . . . .	53
	Deleting Clips . . . . .	53
	Grouping Clips . . . . .	54
	Using the Context-Sensitive Record Menu . . . . .	55
<b>Chapter 4</b>	<b>Playing Feeds and Clips</b>	
	Tour of the Playback Tab . . . . .	58
	Opening a Feed . . . . .	59
	Closing a Feed . . . . .	59
	Playing Feeds and Clips . . . . .	60
	Playing a Feed . . . . .	60
	Playing Clips in the Playlist . . . . .	60
	Changing the Playing Speed While Viewing . . . . .	61
	Creating a Playlist . . . . .	62
	Using the Auto-Mark Feature . . . . .	63
	Rearranging Your Playlist . . . . .	63
	Reordering Clips . . . . .	63
	Deleting Clips . . . . .	63
	Grouping Clips . . . . .	64
	Adjusting Audio Output . . . . .	65
	Adjusting the Volume . . . . .	65
	Muting Audio Channels . . . . .	65
	Using the Context-Sensitive Playback Menu . . . . .	66
<b>Chapter 5</b>	<b>Trimming Clips</b>	
	Tour of the Trimmer . . . . .	68
	How to Trim a Clip . . . . .	68
	Navigating Through Clips . . . . .	69
	Playing Clips . . . . .	70
	Moving to Specified Frames . . . . .	70
	Changing Mark In and Out Points . . . . .	71
	More Ways to Use the Trimmer . . . . .	71
	Using Handles to Add Frames to Your Clips . . . . .	71
	Locking the Duration of a Clip . . . . .	72

	Playing Past Out . . . . .	72
	Using Control Track . . . . .	73
	Looping Playback. . . . .	73
	Resetting the Mark Points on the Clip . . . . .	73
<b>Chapter 6</b>	<b>Sending Clips</b>	
	Grouping Clips . . . . .	76
	Sending Clips . . . . .	78
	Understanding Clip Status Colors. . . . .	80
<b>Appendix A</b>	<b>The FeedClip Keyboard . . . . .</b>	<b>81</b>
<b>Appendix B</b>	<b>Configuring FeedClip . . . . .</b>	<b>85</b>
<b>Appendix C</b>	<b>Tips for Using FeedClip . . . . .</b>	<b>103</b>
	<b>Index</b>	



---

*Contents*

## Grass Valley Product Support

To get technical assistance, check on the status of problems, or report new problems, contact Grass Valley Product Support via e-mail, the Web, or by phone or fax.

### Web Technical Support

To access support information on the Web, visit the product support Web page on the Grass Valley Web site. You can download software or find solutions to problems by searching our Frequently Asked Questions (FAQ) database.

**World Wide Web:** <http://www.thomsongrassvalley.com/support/>

**Technical Support E-mail Address:** [gvgtechsupport@thomson.net](mailto:gvgtechsupport@thomson.net)

### Phone Support

Use the following information to contact product support by phone during business hours. Afterhours phone support is available for warranty and contract customers.

United States	(800) 547-8949 (Toll Free)	France	+33 (1) 34 20 77 77
Latin America	(800) 547-8949 (Toll Free)	Germany	+49 6155 870 606
Eastern Europe	+49 6155 870 606	Greece	+33 (1) 34 20 77 77
Southern Europe	+33 (1) 34 20 77 77	Hong Kong	+852 2531 3058
Middle East	+33 (1) 34 20 77 77	Italy	+39 06 8720351
Australia	+61 3 9721 3737	Netherlands	+31 35 6238421
Belgium	+32 2 3349031	Poland	+49 6155 870 606
Brazil	+55 11 5509 3440	Russia	+49 6155 870 606
Canada	(800) 547-8949 (Toll Free)	Singapore	+656379 1390
China	+86 106615 9450	Spain	+ 34 91 512 03 50
Denmark	+45 45968800	Sweden	+46 87680705
Dubai	+ 971 4 299 64 40	Switzerland	+41 (1) 487 80 02
Finland	+35 9 68284600	UK	+44 870 903 2022





## **Authorized Support Representative**

A local authorized support representative may be available in your country. To locate the support representative for your country, visit the product support Web page on the Grass Valley Web site.

## **Profile Users Group**

You can connect with other Profile XP Media Platform users to ask questions or share advice, tips, and hints. Send e-mail to [profile-users@thomson.net](mailto:profile-users@thomson.net) to join the community and benefit from the experience of others.

# Safety Summaries

## General Safety Summary

Review the following safety precautions to avoid injury and prevent damage to this product or any products connected to it.

*Only qualified personnel should perform service procedures.*

While using this product, you may need to access other parts of the system. Read the *General Safety Summary* in other system manuals for warnings and cautions related to operating the system.

Review all system operator manuals, including manuals in electronic format on the system hard drive.

## Injury Precautions

### **Use Proper Power Cord**

To avoid fire hazard, use only the power cord specified for this product.

### **Ground the Product**

This product is grounded through the grounding conductor of the power cord. To avoid electric shock, the grounding conductor must be connected to earth ground. Before making connections to the input or output terminals of the product, ensure that the product is properly grounded.

### **Do Not Operate Without Covers**

To avoid electric shock or fire hazard, do not operate this product with covers or panels removed.

### **Do Not Operate in Wet/Damp Conditions**

To avoid electric shock, do not operate this product in wet or damp conditions.

### **Do Not Operate in an Explosive Atmosphere**

To avoid injury or fire hazard, do not operate this product in an explosive atmosphere.

### **Avoid Exposed Circuitry**

To avoid injury, remove jewelry such as rings, watches, and other metallic objects. Do not touch exposed connections and components when power is present.



---

*Preface*

## **Product Damage Precautions**

<b>Use Proper Power Source</b>	Do not operate this product from a power source that applies more than the voltage specified.
<b>Provide Proper Ventilation</b>	To prevent product overheating, provide proper ventilation.
<b>Do Not Operate With Suspected Failures</b>	If you suspect there is damage to this product, have it inspected by qualified service personnel.
<b>Battery Replacement</b>	To avoid damage, replace only with the same or equivalent type recommended by the circuit board manufacturer. Dispose of used battery according to the circuit board manufacturer's instructions.

## Safety Terms and Symbols

### Terms in This Manual

These terms may appear in this and other product manuals:



*WARNING:* Warning statements identify conditions or practices that can result in personal injury or loss of life.



*CAUTION:* Caution statements identify conditions or practices that can result in damage to the equipment or other property.

### Terms on the Product

These terms may appear on the product:

*DANGER* indicates a personal injury hazard immediately accessible as one reads the marking.

*WARNING* indicates a personal injury hazard not immediately accessible as you read the marking.

*CAUTION* indicates a hazard to property including the product.

### Symbols on the Product

The following symbols may appear on the product:



DANGER high voltage



Protective ground (earth) terminal



ATTENTION – refer to manual



## **Service Safety Summary**

**Do Not Service  
Alone**

Do not perform internal service or adjustment of this product unless another person capable of rendering first aid and resuscitation is present.

**No Power Switch**

To avoid electric shock, disconnect the main power by means of the power cord. The power cord is the main power disconnect. Ensure that the power cord is easily accessible at the rear of the product or at the power receptacle.

**Use Care When  
Servicing With  
Power On**

Dangerous voltages or currents may exist in this product. Disconnect power and remove battery (if applicable) before removing protective panels, soldering, or replacing components.

To avoid electric shock, do not touch exposed connections.

## **Certifications and Compliances**

### **Canadian Certified Power Cords**

Canadian approval includes the products and power cords appropriate for use in the North America power network. All other power cords supplied are approved for the country of use.

### **FCC Emission Control**

This equipment has been tested and found to comply with the limits for a Class A digital device, pursuant to Part 15 of the FCC Rules. These limits are designed to provide reasonable protection against harmful interference when the equipment is operated in a commercial environment. This equipment generates, uses, and can radiate radio frequency energy and, if not installed and used in accordance with the instruction manual, may cause harmful interference to radio communications. Operation of this equipment in a residential area is likely to cause harmful interference in which case the user will be required to correct the interference at his own expense. Changes or modifications not expressly approved by Grass Valley can affect emission compliance and could void the user's authority to operate this equipment.

### **Canadian EMC Notice of Compliance**

This digital apparatus does not exceed the Class A limits for radio noise emissions from digital apparatus set out in the Radio Interference Regulations of the Canadian Department of Communications.

Le présent appareil numérique n'émet pas de bruits radioélectriques dépassant les limites applicables aux appareils numériques de la classe A prescrites dans le Règlement sur le brouillage radioélectrique édicté par le ministère des Communications du Canada.

### **Canadian Certified AC Adapter**

Canadian approval includes the AC adapters appropriate for use in the North America power network. All other AC adapters supplied are approved for the country of use.

### **EN55022 Class A Warning**

For products that comply with Class A. In a domestic environment this product may cause radio interference in which case the user may be required to take adequate measures.



## **Laser Compliance**

### **Laser Safety Requirements**

The device used in this product is a Class 1 certified laser product. Operating this product outside specifications or altering its original design may result in hazardous radiation exposure, and may be considered an act of modifying or new manufacturing of a laser product under U.S. regulations contained in 21CFR Chapter 1, subchapter J or CENELEC regulations in HD 482 S1. People performing such an act are required by law to recertify and reidentify this product in accordance with provisions of 21CFR subchapter J for distribution within the U.S.A., and in accordance with CENELEC HD 482 S1 for distribution within countries using the IEC 825 standard.

### **Laser Safety**

Laser safety in the United States is regulated by the Center for Devices and Radiological Health (CDRH). The laser safety regulations are published in the “Laser Product Performance Standard,” Code of Federal Regulation (CFR), Title 21, Subchapter J.

The International Electrotechnical Commission (IEC) Standard 825, “Radiation of Laser Products, Equipment Classification, Requirements and User’s Guide,” governs laser products outside the United States. Europe and member nations of the European Free Trade Association fall under the jurisdiction of the Comité Européen de Normalization Electrotechnique (CENELEC).

### **FCC Emission Limits**

This device complies with Part 15 of the FCC Rules. Operation is subject to the following two conditions: (1) This device may not cause harmful interference, and (2) this device must accept any interference received, including interference that may cause undesirable operation.

## **Certification**

<b>Category</b>	<b>Standard</b>
Safety	<i>Designed/tested for compliance with:</i> <b>ANSI/UL60950-2000</b> - Safety of Information Technology Equipment <b>IEC 60950</b> - Safety of Information Technology Equipment (3rd edition, 1999) <b>CAN/CSA C22.2, No. 60950-00</b> - Safety of Information Technology Equipment <b>EN60950:2000</b> - Safety of Information Technology Equipment (3rd edition)





## Environmental Criteria

The following table lists the environmental criteria for the FeedClip system.

Characteristics	Description
Operating Temperature	<i>Requirement:</i> 10° to 40°C
Storage Temperature	<i>Requirement:</i> -40° to 65°C
Operating Altitude	<i>Requirement:</i> To 10,000 feet <i>Supplemental Data:</i> IEC 60950 compliant to 2000 meters
Storage Altitude	<i>Requirement:</i> To 40,000 feet
Mechanical Shock	<i>Supplemental Data:</i> Class 5 (30G) Grass Valley 001131500
Random Vibration	<i>Requirement:</i> Operational: Class 6 Grass Valley 001131500 <i>Requirement:</i> Non-Operational: Class 5 Grass Valley 001131500
Transportation	<i>Requirement:</i> Grass Valley 001131500
Equipment Type	<i>Supplemental Data:</i> Information Technology
Equipment Class	<i>Supplemental Data:</i> Class 1
Installation Category	<i>Requirement:</i> Category II Local level mains, appliances, portable equipment, etc.
Pollution Degree	<i>Requirement:</i> Level 2 operating environment, indoor use only.
Relative Humidity	<i>Requirement:</i> Operating 80% from +30° to +40°C Non-Operating 90% from +30° to +60°C Do not operate with visible moisture on the circuit boards

## ***Introducing FeedClip***

FeedClip is a digital, interactive feed capture system for news applications that enables broadcasters to quickly turn around live events faster than is possible in a tape environment. With FeedClip, you can record video while simultaneously creating, organizing, and playing back clips—you can save clips and use them in a broadcast or export them to a NewsEdit workstation for further editing.

This manual shows you how to use FeedClip effectively and efficiently to record news feeds and create clips for use in a broadcast news show.

This chapter discusses:

- What FeedClip is
- The feed capture process using FeedClip
- The FeedClip window
- Working in Local or Shared mode
- How to navigate around FeedClip
- How to use the FeedClip keyboard



## What is FeedClip?

FeedClip is a feed capture system that allows you to record video and audio to a disk and create and organize clips. You can mark clips on the fly while recording a live broadcast or from a previously recorded file, then use clips for broadcast or export selected clips to NewsEdit for further editing.

With FeedClip, you can undertake multiple tasks such as recording, clip marking, scrubbing, and editing all at the same time—bringing greater efficiency to your news and broadcasting operation.

FeedClip also lets you schedule events to record in the future.

Examples of use for FeedClip include:

- The President calls a news conference prior to your evening news broadcast. You start FeedClip and begin recording the news conference in its entirety. While the broadcast is recording, you review the incoming video and mark clips in the recording. You then edit and organize these clips for broadcast during your nightly news program.
- There is a live breaking news event in the middle of your evening broadcast. You start FeedClip and begin marking clips. You then edit those clips and play them back on the air without any transfer between machines.
- You need to create a highlight package of a sports event for your late sports segment. You play the recording and mark clips of the highlights you want to include in the broadcast, then organize a highlight package. When you play back the clips, you can play them normally or in slow motion.

## **Quick Overview of Creating Clips with FeedClip**

You create clips with FeedClip following these general steps:

1. Record news feeds to disk.

You can record manually or schedule feeds to record at specific times on specific dates.

2. Create clips from the news feed.

You can create clips while a feed is recording or later during playback.

3. Trim the clips, if necessary.

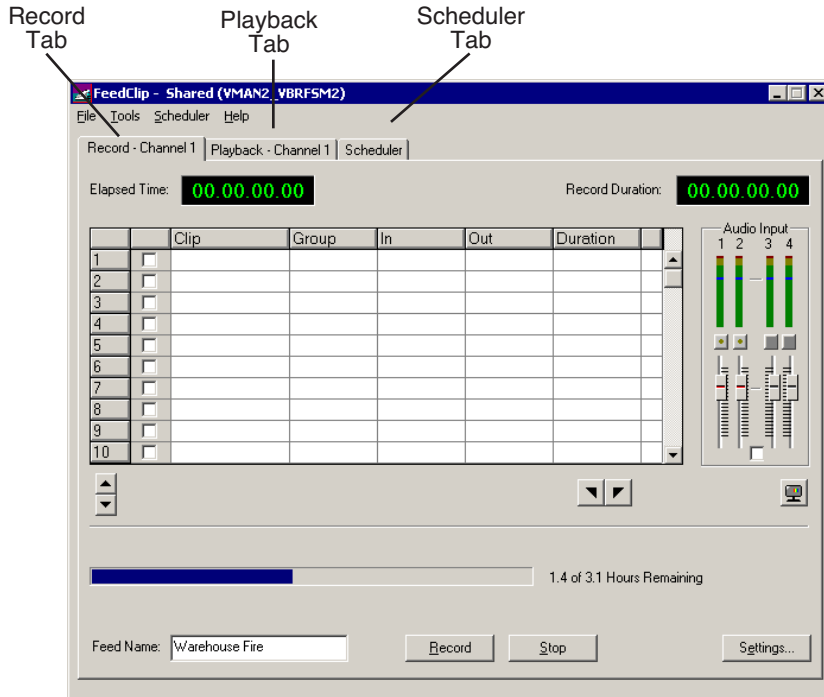
4. Send the clips to a NewsEdit workstation for additional editing or to a network server to play to air.

This manual takes you through the process of recording feeds and creating clips with FeedClip.



## Tour of the FeedClip Window

The FeedClip window consists of a viewer window and three tabs — the Record tab, the Playback tab, and the Scheduler tab.

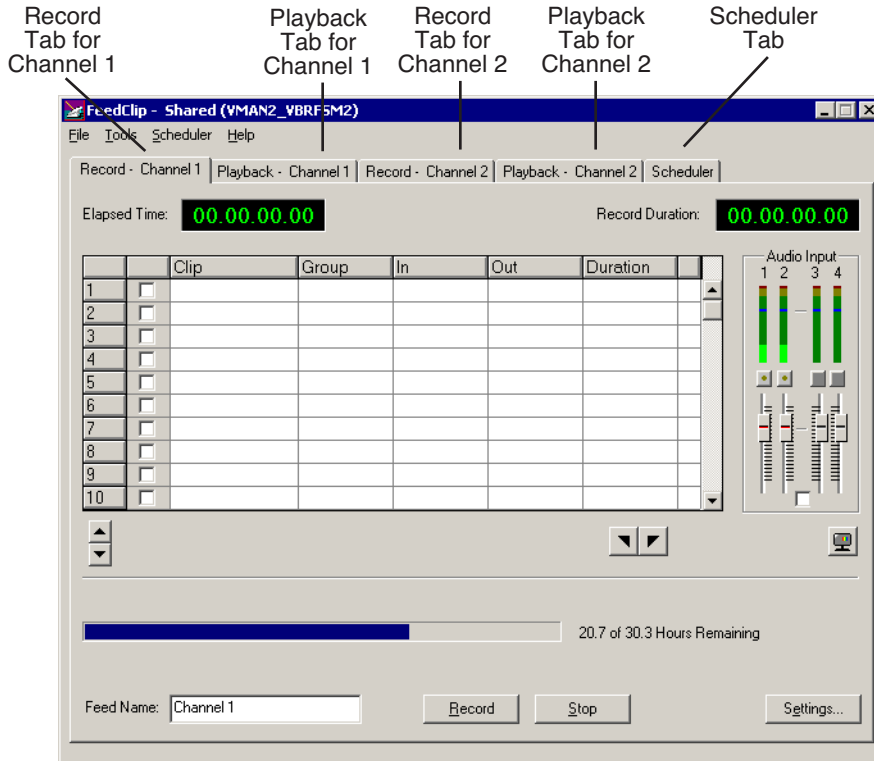


Viewer Window



## Tour of the FeedClip Window

If you are using two channels with FeedClip, you have two Record tabs and two Playback tabs — one for each channel, and one Scheduler for both channels. You also have a viewer window for each channel.



Viewer Windows





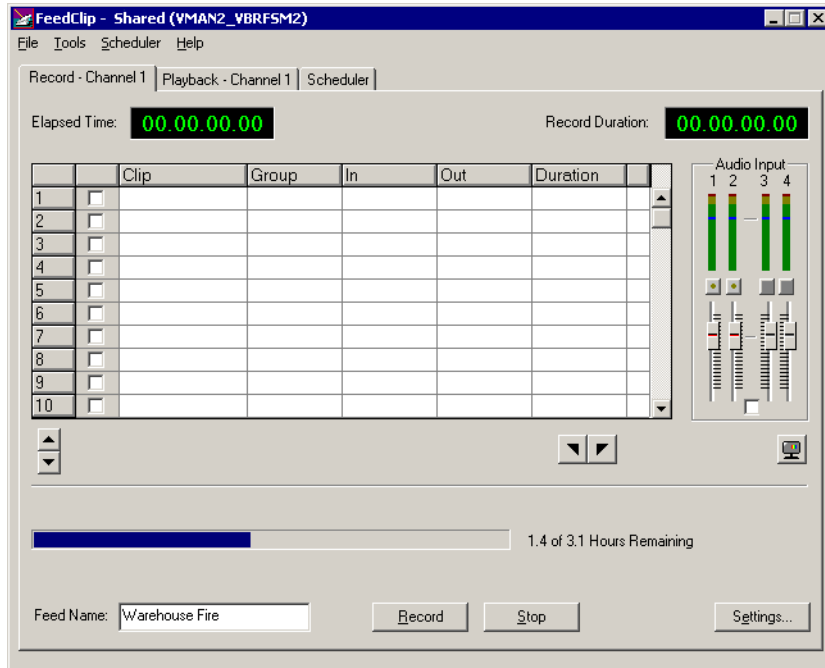
## The Viewer Window

The viewer window lets you monitor the video while you are recording, scrubbing, or playing back. You can view the video at full size, half size, or quarter size.



## The Record Tab

The Record tab lets you record feeds immediately and create clips on the fly. If you've scheduled a feed, it displays in the Record tab when it records. You can also adjust the audio input levels.



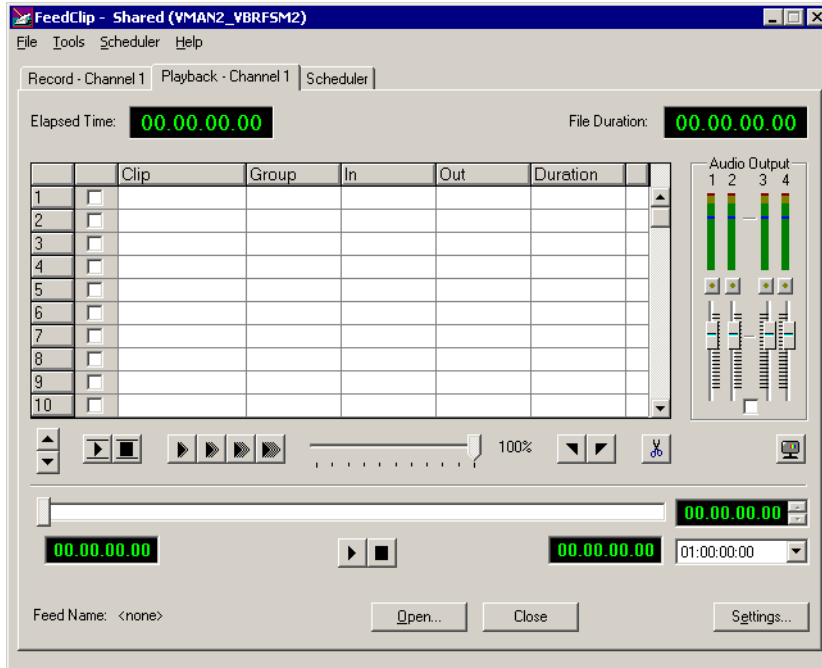
See Chapter 3, “Recording Feeds and Creating Clips,” for details on recording feeds.





## The Playback Tab

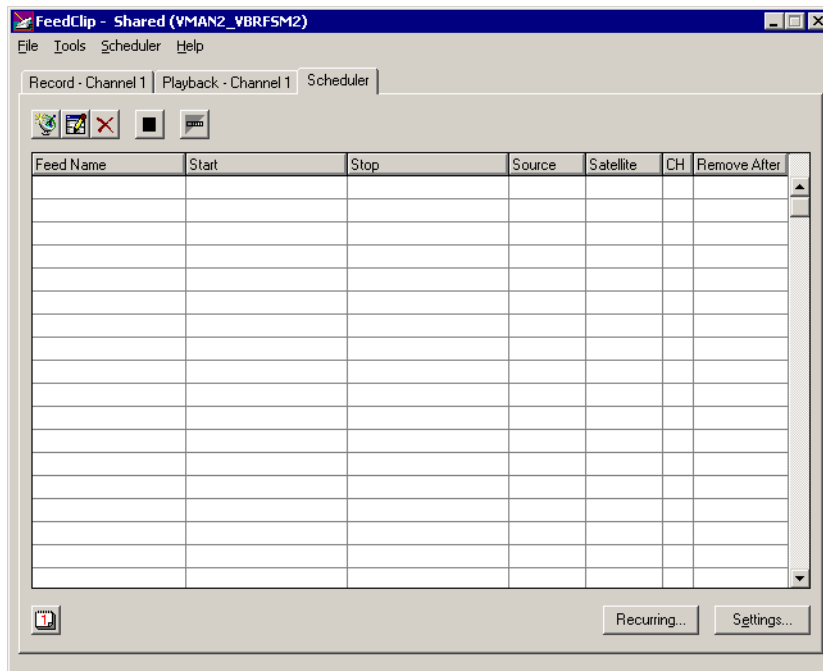
The Playback tab lets you open a recorded feed and create clips. You can also trim a clip, if necessary, and adjust the audio output levels.



See Chapter 4, “Playing Feeds and Clips,” for details on using recorded feeds.

## The Scheduler Tab

The Scheduler lets you set up feeds to record automatically at pre-defined times and dates. You can also schedule recurring events, allowing you to record the same feed every day of the week or once a week — you define the dates and times.



See Chapter 2, “Scheduling Feeds For Recording,” for details on using the scheduler to automatically record feeds.



## Working in Shared or Local Mode

You can use FeedClip either in shared or local mode:

- Shared mode uses a shared media database. All Digital News Production workstations access the same bins; the bins are locked so two editors can't make changes to the same file at the same time.
- Local mode uses your computer's local disk storage and a local media database. Each FeedClip workstation has its own Bin on the FeedClip machine, and cannot share the Bin. In order to use someone else's files, you need to import them.

You can change modes from the General Options menu; see "Setting General Options" on page 90 for instructions.

FeedClip indicates your current mode at the top of the window.

FeedClip in Shared Mode



You record and play back media in FeedClip the same way regardless of what mode you are working in. The main difference is that your Bin is shared, and all editors using a Digital News Production workstation have access to the same media files you do.

## Navigating in FeedClip

You work in FeedClip with the mouse, the keyboard, or a combination of both. This manual includes instructions for both mouse and keyboard commands, allowing you to use the method you prefer. You may generally find keyboard operation easier.

### Using the Mouse

To execute a mouse command, move the mouse pointer to a given menu or button, then click the left mouse button. This manual uses the term *click* when you press the mouse button once; *double-click* when you press the mouse button twice in quick succession; *press* when you press and hold the mouse button.

### Using the Keyboard

The keyboard is customized with color-coded keys that allow you to see commands at a glance. Keyboard commands are either a single keystroke or a key combination. You execute key combinations such as **Ctrl+TAB** by pressing and holding the first key in the combination, and then pressing the second key. A complete list of the keyboard keys and functions is in *Appendix A*.

### Using the Shortcut Menus

FeedClip also makes use of right-click shortcut menus, which provide a quick way to access relevant commands without having to move the mouse pointer to the toolbar or menu bar. To access these menus, press the right mouse button once and a menu appears. The commands that appear depend on the position of the mouse pointer when you right-click. For example, when you right-click in the playlist on the Record tab, the shortcut menu provides quick access to recording commands.

If you are comfortable using a mouse, shortcut menus provide a valuable means of accessing commands quickly.



## Tour of the FeedClip Keyboard

FeedClip's keyboard uses color-coded keys that correspond to FeedClip functions. The keyboard you use with FeedClip is the same keyboard you use with other Digital News Production products, including NewsEdit. Some of the keys are used exclusively for NewsEdit and are not used with FeedClip. Keys listed here apply to FeedClip functions. For a complete key reference, see *Appendix A*.



### The Record Button



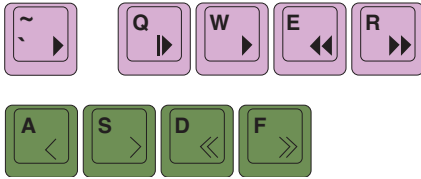
The record button is red, and allows you to start recording with one key press.

### Mark Point Buttons



You use the dark purple buttons to set and control the mark In and Out points.

## Transport Control Buttons

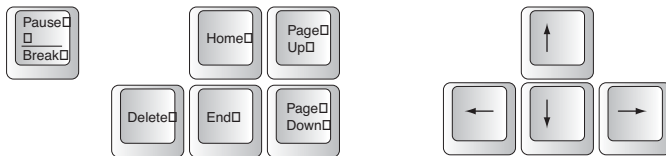


You use the light purple buttons for playing clips; you use the avocado green buttons to control movement within a clip.

## Other FeedClip Buttons



You use this green button to send clips to other workstations or video servers. The black buttons round out the FeedClip application.





---

*Chapter 1 Introducing FeedClip*

## ***Scheduling Feeds For Recording***

Most news stations have several feeds coming in each day, and managing those feeds and ensuring on-time and accurate recording can be difficult. With the FeedClip Scheduler, you can set up feeds to record automatically at pre-defined times and dates. You can also schedule recurring events, allowing you to record the same feed every day of the week or once a week—you define the dates and times.

This chapter discusses how to:

- Use the Scheduler to schedule feeds for recording
- Enable the Scheduler
- Add entries
- Modify or delete entries
- Add and modify recurring entries





## Tour of the Scheduler Tab

To schedule feeds for recording, you use the FeedClip Scheduler. The Scheduler is a good way to ensure that feeds are recorded on-time all the time. You can set up FeedClip to record at any time of the day or night. You can also set up feeds to record at the same time every day of the week, or whenever you record feeds. FeedClip controls the recording so you don't have to.

To use the Scheduler, click the Scheduler tab to bring it to the front of the window.

Feed Name	Start	Stop	Source	Satellite	CH	Remove After
quick record	3:02:05 pm 11/15/2001	3:03:00 pm 11/15/2001	My source	My Satellite	1	11/18/2001
Residential address_11	7:00:00 pm 11/15/2001	8:00:00 pm 11/15/2001	My source	My Satellite	1	3 Days
satellite feed	10:00:00 pm 11/15/2001	12:00:00 am 11/16/2001	My source	My Satellite	1	3 Days
sports wrapup_11.15.20	11:00:00 pm 11/15/2001	12:00:00 am 11/16/2001	My source	My Satellite	1	3 Days
sports wrapup_11.16.20	11:00:00 pm 11/16/2001	12:00:00 am 11/17/2001	My source	My Satellite	1	3 Days
sports show	10:00:00 pm 11/19/2001	11:30:00 pm 11/19/2001	My source	My Satellite	1	3 Days






Annotations:

- Toolbar
- List of Scheduled Feeds
- Enable the Scheduler
- Schedule Recurring Feeds
- Change Scheduler Settings

## Toolbar



The Scheduler Toolbar lets you access common features:

Icon	Function
	Creates a new scheduled entry for recording.
	Edits a scheduled entry.
	Deletes the selected scheduled entry.
	Stops a scheduled entry from recording if it is already recording.
	Disables an entry so it won't record at the scheduled time, but doesn't delete the entry from the scheduler.



## Understanding the Scheduler List Colors

Each entry in the Scheduler displays a certain color according to its status in FeedClip. The colors are:

Feed Name	Start	Stop	Source	Satellite	CH	Remove After
quick record	3:02:05 pm 11/15/2001	3:03:00 pm 11/15/2001	My source	My Satellite	1	11/18/2001
Presidential address_11	7:00:00 pm 11/15/2001	8:00:00 pm 11/15/2001	My source	My Satellite	1	3 Days
satellite feed	10:00:00 pm 11/15/2001	12:00:00 am 11/16/2001	My source	My Satellite	1	3 Days
sports wrapup_11.15.20	11:00:00 pm 11/15/2001	12:00:00 am 11/16/2001	My source	My Satellite	1	3 Days
sports wrapup_11.16.20	11:00:00 pm 11/16/2001	12:00:00 am 11/17/2001	My source	My Satellite	1	3 Days
sports show	10:00:00 pm 11/19/2001	11:30:00 pm 11/19/2001	My source	My Satellite	1	3 Days

Row Background Color	Description
Red	The entry is recording.
Gold	The entry is waiting to record and is next to record.
Green	The entry has recorded.
Blue	The entry is selected.
Gray	The entry is disabled and will not record.
Black	The scheduled entry overlaps another recording.

## Enabling the Scheduler

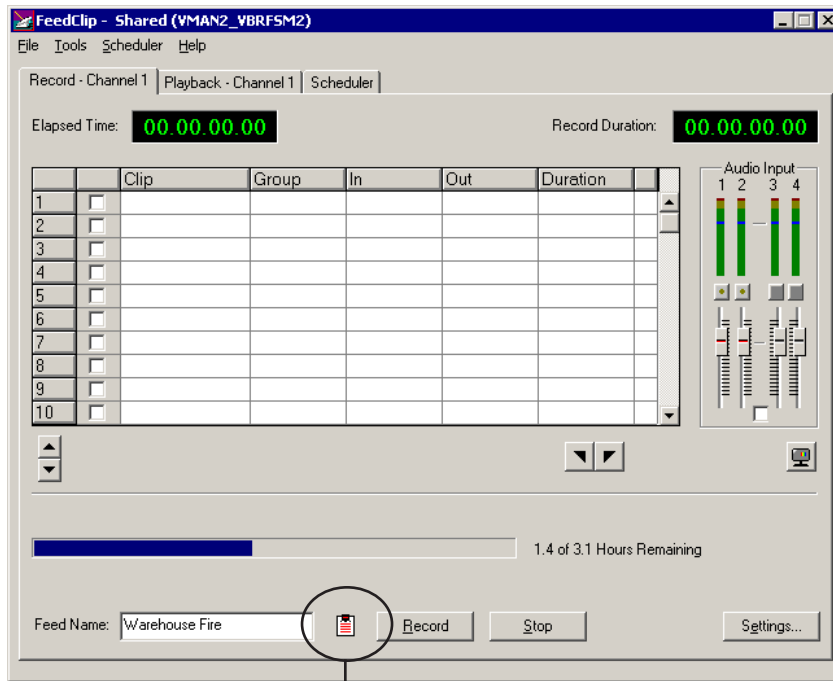
In order for feeds to record at scheduled times and dates, you need to enable the Scheduler. You can set up feeds to record, but unless you enable the Scheduler, the feeds will not record at the appropriate time.

To enable the scheduler:



- Click the **Enable Scheduler** button on the Scheduler tab.

The Record tab displays an icon indicating that scheduling can occur.



Scheduler Enabled

If you disable the scheduler, any scheduled feeds will not record.

**NOTE:** If you are using two channels with FeedClip, you need to click the **Enable Scheduler** buttons for each individual channel in order to schedule feeds.



## Adding New Entries

To record feeds, you add a scheduled entry for each feed you want to record. You provide information about the feed and FeedClip adds the entry to the Scheduler. The entry also displays on the Record tab while it's recording.

If you want to schedule a feed to record on more than one occasion, such as every day of the week, see “Scheduling Recurring Events” on page 41 for instructions.

**NOTE:** *You must allow at least thirty seconds of time between two scheduled feeds on the same channel.*

To add a new entry:



1. Click the **Add Entry** button or double-click a row in the scheduling list.

The Add Entry window opens.

**Add Scheduled Entry**

Feed Info

Name: satellite feed

Description: feed from satellite at 10:00 PM

Location: \New Bin

Do Not Remove      Remove After: 3 Day(s)

Time/Date Info

Start Record Now       Open Ended Record

Start Time: 10:00:00 PM      Stop Time: 12:00:00 AM

Start Date: 3 / 4 /2003      Stop Date: 3 / 4 /2003

Misc

Source:      Satellite:

Channel: 1

OK      Cancel

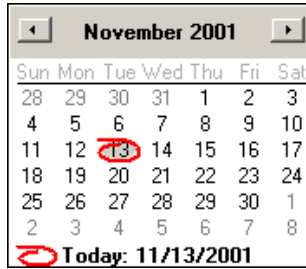
2. Fill out the information for the feed you are scheduling:
- **Name** — Enter the name of the scheduled feed.
  - **Description** — Enter a description of the feed (optional).
  - **Location** — Displays the path to the Bin where this feed is stored.  
(See “General Settings” on page 95 for instructions on setting the default bin for recording)
  - **Do Not Remove** — Check this box if you want to keep feeds stored on your system or server. Otherwise, feeds and clips will delete automatically after a period of time.
  - **Remove After** — Enter the number of days for a scheduled feed to remain on the system. After that period of time, the entry and the recorded clip are deleted from your system.
  - **Start Record Now**— Check this box if you want a recording to start as soon as you click OK. If you check this box, you need to provide an ending time for the record. Can be used with Open Ended Record.
  - **Open Ended Record**— Check this box if you want a recording to continue until you manually stop it. You provide a start time for the record. Can be used with Start Record Now.
  - **Start Time**— Enter the time you want the recording to start. Enter the time using the format **hour:minutes:seconds** along with **AM/PM**.
  - **Stop Time** — Enter the time you want the recording to end. Enter the time using the format **hour:minutes:seconds** along with **AM/PM**.
  - **Start Date** — Select the day you want the recording to start on using the drop-down calendar. Move to a different month using the arrows at the top



---

## Chapter 2 Scheduling Feeds For Recording

of the calendar.



- **Stop Date** — Select the day you want the recording to end on using the drop-down calendar. Move to a different month using the arrows at the top of the calendar.
  - **Source** — Select the source to record from on the drop-down list (optional).
  - **Satellite** — Select the satellite to record from on the drop-down list (optional).
  - **Channel** — Select the channel on which to record the scheduled event.
3. Click **OK**.







## Modifying Entries

Once you create an entry and it is listed on the scheduler, you can edit or delete it. You can also disable scheduled events without deleting a clip.

### Editing Entries

If you need to edit an entry for any reason:



1. Select the entry you want to edit and click **Edit Entry**.

You can also double-click the entry.

2. Make your changes in the Edit Entry window.
3. Click **OK**.

The entry updates and displays in the Scheduler.

### Removing Entries

If you need to delete an entry:



- Select the entry you want to delete and click **Delete Entry**.

You can also click once on an entry to select it and press the Delete key.

The entry is removed from the Scheduler list.

### Disabling Scheduled Events

Sometimes you may need to delete a specific recording but you don't want to remove it from the Scheduler list. Recurring Events cannot be deleted, so you must disable them in order to stop the recording.

To disable an event:



- Select the entry you want to edit and click **Disable Entry**.

You can also right-click on the entry and select **Disable Entry**.

The entry background turns gray (indicating it will not record) but remains in the Scheduler.

When you want to re-enable the entry, click the **Disable Entry** button again.





The Add Recurring Entry window opens.

The screenshot shows a dialog box titled "Add Recurring Entry". It is divided into three sections: "Feed Info", "Time/Day Info", and "Misc".  
- **Feed Info:** "Name" is "daily satellite feed", "Description" is "daily feed for national news updates". There is a checkbox for "Do Not Remove" (unchecked) and a "Remove After" field set to "3" days.  
- **Time/Day Info:** "Start Time" is "6:00:00 PM" and "Stop Time" is "7:00:00 PM". Checkboxes are checked for Mon., Tues., Wed., Thurs., Fri., Sat., and Sun.  
- **Misc:** "Source" and "Satellite" are dropdown menus. "Channel" is set to "1".  
Buttons for "OK" and "Cancel" are at the bottom.

3. Fill out the information for the recurring feed:

- **Name** — Enter the name of the scheduled feed.
- **Description** — Enter a description of the feed (optional).
- **Do Not Remove** — Check this box if you want to keep feeds stored on your system or server. Otherwise, feeds and clips will delete automatically after a period of time.
- **Remove After** — Enter the number of days for a scheduled feed to remain on the system. After that period of time, the entry and the recorded clip are deleted from your system.
- **Start Time**— Enter the time you want the recording to start. Enter the time using the format **hour:minutes:seconds** along with **AM/PM**.
- **Stop Time** — Enter the time you want the recording to end. Enter the time using the format **hour:minutes:seconds** along with **AM/PM**.
- **Days of the Week**— Check the boxes for the day or days you want the entry to record. For example, if you want to record a feed every Monday at the same time, check the box for Monday.





## Editing an Entry

If you need to edit a recurring entry for any reason:

1. Click the **Recurring...** button.
2. Select the entry you want to edit and click **Edit Entry**.



You can also double-click the entry.

3. Make your changes in the Edit Recurring Entry window.
4. Click **OK**.

The entry updates and displays in the Recurring Events list and in the Scheduler.

## Removing an Entry

If you need to delete a recurring entry:



1. Click the **Recurring...** button.
2. Select the entry you want to delete and click **Delete Entry**.

The entry deletes and is removed from the Recurring Events list.

To prevent a single instance of a recurring entry from recording, disable it from the Scheduler tab.

## Using the Context-Sensitive Scheduler Menu

Several FeedClip features are available by right-clicking in the clip list in the Scheduler window. The menu is context-sensitive; that is, you will see a different list of available features depending on what is selected.

<b>Menu Item</b>	<b>Description</b>
Add Entry	Opens the Add Scheduled Entry window allowing you to create a new feed to record.
Edit Entry	Opens the entry in the Edit window allowing you to make changes to the scheduled feed.
Disable Entry	Stops the entry from recording at the scheduled time; does not remove the entry from the list.
Delete	Removes the scheduled feed from the list; you cannot undo this function.
Stop Recording	Use this to stop a feed from recording; use when the feed is currently recording.



---

*Chapter 2 Scheduling Feeds For Recording*

## ***Recording Feeds and Creating Clips***

One of FeedClip's most powerful features is the ability to record and mark clips at the same time. This means that while a feed is recording you can mark, group, trim and otherwise organize clips without interrupting the recording. This is one of the advantages of working digitally.

You can record a feed and create clips at the same time, or record a feed and create the clips at a later time.

This chapter discusses how to:

- Record feeds
- Adjust audio input
- Create a playlist while recording
- Rearrange the playlist
- Use the context-sensitive menu





## Tour of the Record Tab

You use the Record tab to record all of your feeds. You can also create clips while you are recording a feed. If you schedule feeds using the FeedClip Scheduler, they appear in the playlist when they record.

To record feeds, click the Record tab to bring it to the front of the window.

Annotations for the FeedClip Record Tab interface:

- Playlist
- Reorder items in the list
- Name of feed
- Adjust the audio
- Show or hide the Viewer window
- Mark in and out points
- Starts recording current feed
- Stops recording
- Change settings

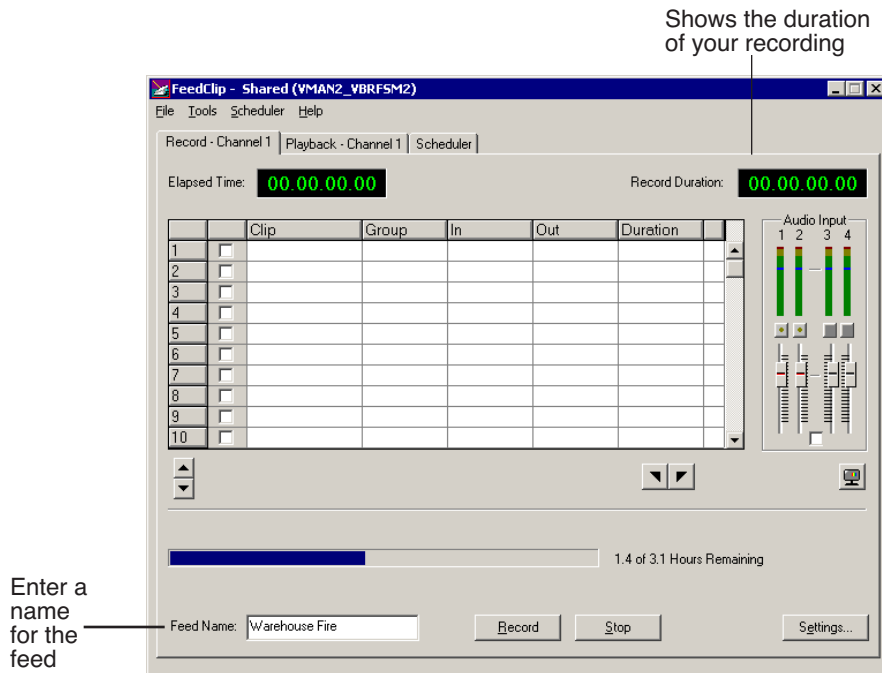
	Clip	Group	In	Out	Duration
1	<input checked="" type="checkbox"/>	Untitled 1	14.46.09.00	14.46.12.04	00.00.03.05
2	<input checked="" type="checkbox"/>	Untitled 2	14.46.09.28	14.46.16.17	00.00.06.20
3	<input checked="" type="checkbox"/>	Untitled 3	14.46.14.27	14.46.24.27	00.00.10.01
4	<input checked="" type="checkbox"/>	Untitled 4	14.46.22.09	14.46.28.17	00.00.06.09
5	<input checked="" type="checkbox"/>	Untitled 5	14.46.29.05	14.46.36.05	00.00.07.01
6	<input checked="" type="checkbox"/>	Untitled 6	14.46.34.28	14.46.40.26	00.00.05.29
7	<input checked="" type="checkbox"/>	Untitled 7	14.46.40.12	14.46.47.22	00.00.07.11
8	<input type="checkbox"/>				
9	<input type="checkbox"/>				
10	<input type="checkbox"/>				

## Recording a Feed

You record a feed within the Record tab. The Record Duration box tells you the amount of time the feed has been recording.

To record a feed:

1. Enter a name for the feed in the Feed Name box.



2. Adjust the audio input if necessary.  
See “Adjusting Audio Input” on page 51 for instructions.
3. Click the **Record** button or press **F12** on your keyboard to start recording.  
The Record Duration number becomes red and starts counting your feed.



---

## Chapter 3 *Recording Feeds and Creating Clips*

4. Create clips while recording the feed if you want to.

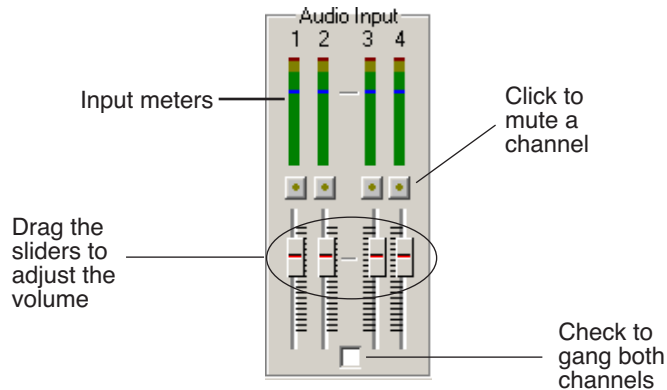
See “Creating a Playlist While Recording” on page 52 for instructions.

5. When you are done recording, press the **Stop** button or press the space bar on your keyboard.

Make sure you are really done recording before you stop. Once you stop recording, the feed is saved to your default location and the playlist no longer appears on the screen. The playlist is saved along with the feed.

## Adjusting Audio Input

You can adjust the audio input before you record a feed to customize the audio levels for your particular needs. You can also make adjustments while the feed is recording.



## Adjusting the Volume

You can use the Master Audio Sliders to adjust the input level for your feeds.

To use the Master Audio Sliders:

- Drag the slider for the appropriate channel up or down to set the input level.  
Check the Master Gang box to adjust both channels simultaneously (unlabeled).

## Muting Audio Channels

By default, FeedClip monitors all audio channels. You can mute specific channels or mute multiple channels at a time.

To Mute a specific track:

- Click the **Master Mute** button for the channel (or channels) you want to mute.

To turn off muting, click the Master Mute button again.



## Creating a Playlist While Recording

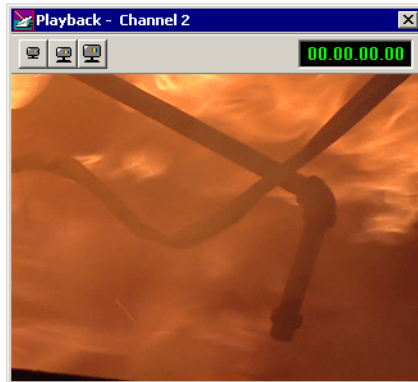
As mentioned before, an important feature of FeedClip is the ability to create clips from a feed as it's recording. You can then open the playlist in the Playback tab and trim the clips if necessary. You can also send clips to another workstation if an editor needs them before the recording is done.

To create a playlist:

1. Make sure the Record tab is selected.
2. Watch the recording in the Viewer window.



If you need to turn on the viewer, press the **Show/Hide Viewer** button.



3. To create a clip, select a Mark In point by clicking the **Mark In** button or pressing **I** or **F5** on your keyboard.



4. End the clip by clicking the **Mark Out** button or pressing **O** or **F6** on your keyboard.
5. Continue marking In and Out points to create as many clips as you want while recording.

## Using the Auto-Mark Feature

FeedClip provides an easy way to automatically mark Out points while creating your playlist. Auto-marking lets you set a default duration for the length of clips.

When you create an In point for a clip, FeedClip automatically marks an Out point based on the duration you set.

To set up automarking, see “Auto-Marking Settings” on page 96.

## Rearranging Your Playlist

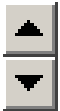
While you are recording the feed and creating clips, you may want to create groups for your clips, or rearrange the clips that are already in the playlist.

### Reordering Clips

You can change the position of a clip in the playlist by moving it up or down in the list.

To reorder a clip:

1. Highlight the clip you want to move by clicking its row number in the leftmost column.
2. Click the Reorder Up or Down button to move the clip to the desired position in the list.



### Deleting Clips

If you need to remove a clip from the playlist at any time, highlight the clip by clicking its row number and press the **Delete** button on your keyboard. You can also right-click on the clip and select **Delete Selection**.



## Grouping Clips

Grouping clips is a way to create a sequence comprised of several clips. When you send a playlist to another workstation or server, each clip is sent as a separate file. A group of clips, on the other hand, is sent as one file, using the name of the group as the filename.

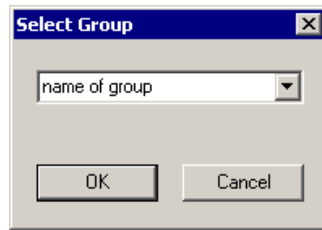
To group clips:

1. Select the clips you want to group by clicking on the row number of the clip in the playlist.

To select a group of consecutive clips, hold down the **Shift** key and click on the clips you want to group; to select a group of non-consecutive clips in the playlist, hold down the **Ctrl** key and click on the clips to group.

2. Right-click on one of the clips in the playlist and select **Group Selection**.

The Select Group window opens.



3. Type a name for the group of clips or select one from the list.
4. Click **OK**.

The name of the group appears in the Group column for each clip in the group.

## Using the Context-Sensitive Record Menu

Several FeedClip features are available by right-clicking on a clip in the playlist in the Record window. The menu is context-sensitive; that is, you will see a different list of available features depending on what is selected.

<b>Menu Item</b>	<b>Description</b>
Mark In	Marks an In point at the current location in the feed.
Mark Out	Marks an Out point at the current location of the feed.
Delete Selection	Removes the selected clip(s) from your playlist.
Send Selection	Sends the selected clip(s) to your primary send destination, if you've set one. See "Sending Clips" on page 78.
Send Selection To...	Allows you to select the send location for the selected clip(s).
Group Selection...	Adds selected clips to a new or existing group.
Remove Selection From Group	Removes the selected clip(s) from the current group.





---

*Chapter 3 Recording Feeds and Creating Clips*

## ***Playing Feeds and Clips***

Once a feed has been recorded, you can use the features of the Playback tab to play feeds, trim clips, or adjust the audio output of a clip. If you didn't create a playlist while the feed was recording, you can create one during playback.

This chapter discusses how to:

- Open and play feeds
- Create a playlist
- Rearrange a playlist
- Adjust audio output
- Use the context-sensitive menu



## Tour of the Playback Tab

You use the Playback tab to open and play feeds you are currently recording or already recorded. While playing the feed, you can create a playlist if you didn't create one while the feed was recording. Once you create a playlist (or have one you created while recording), you can trim clips, rearrange them, and adjust the audio.

To play feeds, click the Playback tab to bring it to the front of the window.

The screenshot shows the 'FeedClip - Shared (VMAN2\_VBRFSM2)' window. At the top, there are tabs for 'Record - Channel 1', 'Playback - Chann 1', and 'Scheduler'. Below the tabs, 'Elapsed Time' is shown as 00:00:03.05 and 'File Duration' as 00:02:55.26. A central table lists clips with columns for 'Clip', 'Group', 'In', 'Out', and 'Duration'. To the right of the table is an 'Audio Output' section with four channels (1-4) and volume sliders. Below the table are playback controls including a play button, a stop button, a trimmer, and a volume knob. At the bottom, there are buttons for 'Open...', 'Close', and 'Settings...'. The 'Feed Name' is 'Warehouse Fire'. Various callouts with arrows point to these elements, explaining their functions.

	Clip	Group	In	Out	Duration
1	<input checked="" type="checkbox"/>	flame shot	14.46.09.00	14.46.12.04	00.00.03.05
2	<input checked="" type="checkbox"/>	fire trucks	14.46.09.28	14.46.16.17	00.00.06.20
3	<input checked="" type="checkbox"/>	procession	14.46.14.27	14.46.24.27	00.00.10.01
4	<input checked="" type="checkbox"/>	ceremony	14.46.22.09	14.46.28.17	00.00.06.09
5	<input checked="" type="checkbox"/>	parade	14.46.29.05	14.46.36.05	00.00.07.01
6	<input checked="" type="checkbox"/>	chief interview	14.46.34.28	14.46.40.26	00.00.05.29
7	<input checked="" type="checkbox"/>	aftermath	14.46.40.12	14.46.47.22	00.00.07.11
8	<input type="checkbox"/>				
9	<input type="checkbox"/>				
10	<input type="checkbox"/>				

Labels and their corresponding functions:

- Playlist
- Reorder items in the list
- Adjust the audio
- Show or hide the Viewer window
- Open the Trimmer
- Mark in and out points
- Change settings
- Close the feed
- Lets you choose a feed to open
- Stop playing the feed
- Play the feed
- Change the playback speed
- Stop playing the clip
- Play the selected clip

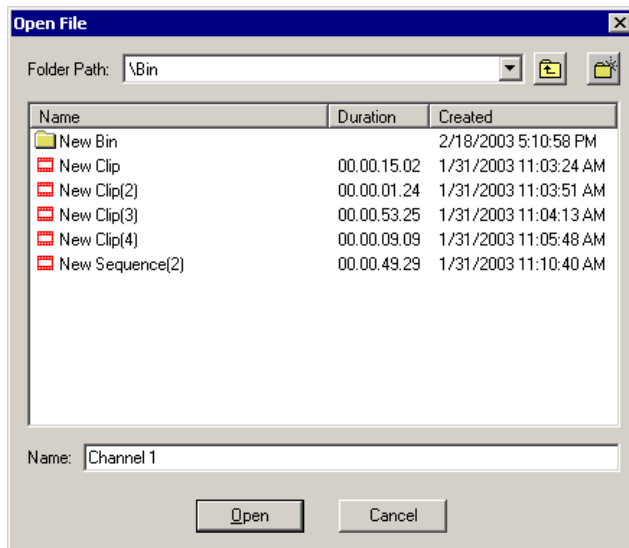
## Opening a Feed

Once a feed is recorded, you can open it in the Playback tab to play it and create a playlist. If you have already created a playlist, you can review the clips and trim them if necessary.

To open a feed:

1. Click the **Open ...** button on the Playback tab.

The Open File window opens.



2. Select the feed from the list and click **Open**.

The feed opens in the Playback tab. If you've created a playlist, the clips display as well; if not, the playlist is empty.

## Closing a Feed

When you want to close a feed, click the **Close File** button on the Playback tab. The feed and playlist close and the Playback tab is empty.



## Playing Feeds and Clips

Once a feed is open, you can play it in order to create a playlist. If a playlist exists, you can play all of the clips or an individual clip.

### Playing a Feed

If a playlist doesn't exist for the currently open feed, you need to play the feed before creating a playlist.

To play a feed:



- Click the **Play Feed** button or press the ~ or **W** keys on your keyboard.

To create a playlist, follow the instructions in “Creating a Playlist” on page 62.

### Playing Clips in the Playlist

Once you have clips in your playlist, you can play each clip individually or as a group.

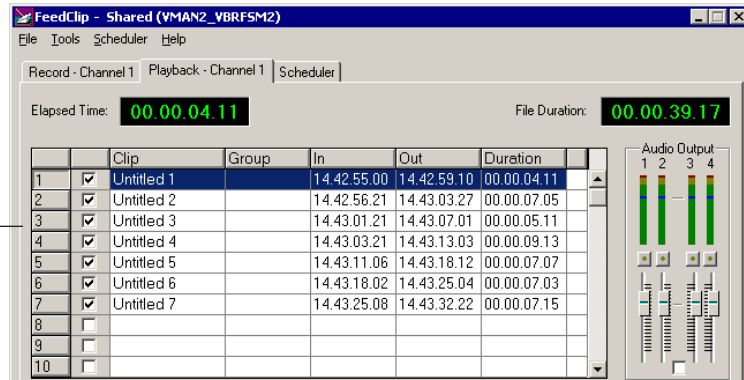


To play a single clip, highlight the clip and click the **Play Clip** button.

To play a group of clips:

1. Check the box next to the clip name for each clip you want to play.

All clips selected for playing



2. Click the **Play Clip** button.

## **Changing the Playing Speed While Viewing**





While playing a feed, you can adjust the speed at which you view the footage in order to speed it up or slow it down.

Changing the speed does not change the speed of the clips when saved; it is used only for viewing.

To change the play speed:

- Click one of the playback speed buttons.

The buttons are predefined as follows:

<b>Button</b>	<b>Playback Speed</b>
	0%
	50%
	75%
	100%

You can define the speed each of the playback speed buttons represents. See “Slow Motion Settings” on page 99 for instructions.



## Creating a Playlist

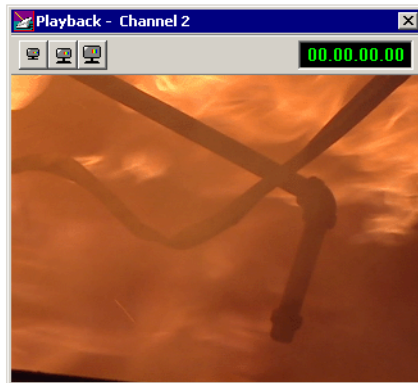
If you didn't create a playlist while your feed was recording, you can do it using the Playback tab. As you play the feed, you can create clips just as you do using the Record tab. You can also trim clips if you need to.

To create a playlist:

1. Open a feed by clicking the **Open** button on the Playback tab.
2. Play the feed by pressing the **Play Feed** button on the Playback tab or pressing **~** or **W** on your keyboard.
3. Watch the recording in the Viewer window.



If you need to turn on the viewer, press the **Show/Hide Viewer** button.



4. To create a clip, select a Mark In point by clicking the **Mark In** button or pressing **I** or **F5** on your keyboard.



5. End the clip by clicking the **Mark Out** button or pressing **O** or **F6** on your keyboard.
6. Continue marking In and Out points to create as many clips as you want while the feed is playing.

You can use the slider bar on the Playback tab to quickly jump to different positions in a clip.

## Using the Auto-Mark Feature

FeedClip provides an easy way to automatically mark Out points while creating your playlist. Auto-marking lets you set a default duration for the length of clips.

When you create an In point for a clip, FeedClip automatically marks an Out point based on the duration you set.

To set up automarking, see “Auto-Marking Settings” on page 96.

## Rearranging Your Playlist

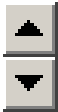
While you are playing the feed and creating clips, you may want to create groups for your clips, or rearrange the clips that are already in the playlist.

Rearranging the playlist in the Playback tab is the same as rearranging the playlist in the Record tab. You can group clips to send as a sequence, reorder the playlist, and delete clips.

## Reordering Clips

You can change the position of a clip in the playlist by moving it up or down in the list.

To reorder a clip:



1. Highlight the clip you want to move.
2. Click the Reorder Up or Down buttons to move the clip to the desired position in the list.

## Deleting Clips

If you need to remove a clip from the playlist at any time, highlight the clip and press the **Delete** button on your keyboard. You can also right-click on the clip and select **Delete Selection**.





## Grouping Clips

Grouping clips is a way to create a sequence comprised of several clips. When you send a playlist to another workstation or server, each clip is sent as a separate file. A group of clips, on the other hand, is sent as one file, using the name of the group as the filename.

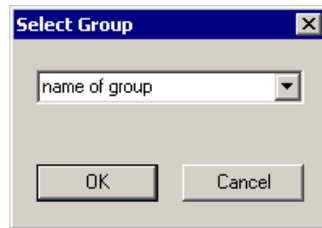
To group clips:

1. Select the clips you want to group by clicking on the row number of the clip in the playlist.

To select a group of consecutive clips, hold down the **Shift** key and click on the clips you want to group; to select a group of non-consecutive clips in the playlist, hold down the **Ctrl** key and click on the clips to group.

2. Right-click in the playlist and select **Group Selection**.

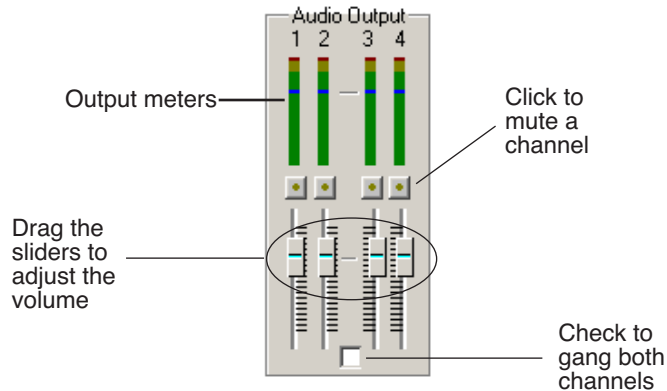
The Select Group window opens.



3. Type a name for the group of clips or select one from the list.
4. Click **OK**.

## Adjusting Audio Output

You can adjust the audio output after you record a feed to customize the audio levels for your particular needs. You can also adjust the volume while you are playing a feed.



## Adjusting the Volume

You can use the Master Audio Sliders to adjust the output level for your feeds.

To use the Master Audio Sliders:

- Drag the slider for the appropriate channel up or down to set the output volume.

Check the Master Gang box to adjust both channels simultaneously (unlabeled).

## Muting Audio Channels

By default, FeedClip monitors all audio channels. You can mute specific channels or mute multiple channels at a time.

To Mute a specific track:

- Click the **Master Mute** button for the channel (or channels) you want to mute.

To turn off muting, click the Master Mute button again.



## Using the Context-Sensitive Playback Menu

Several FeedClip features are available by right-clicking in the clip list in the Playback window. The menu is context-sensitive, that is, you will see a different list of available features depending on what is selected.

Menu Item	Description
Play Selection	Begins playing the selected clip.
Stop Playing	Stops playing the current clip.
Mark In	Marks an In point at the location of the cursor.
Mark Out	Marks an Out point at the location of the cursor.
Trim Clip..	Opens the Trimmer so you can edit a clip.
Delete Selection	Removes the selected clip(s) from your playlist.
Send Selection	Sends the selected clip(s) to your primary send destination.
Send Selection To...	Allows you to select the send location for the selected clip(s).
Group Selection...	Combines selected clips into one group that you can name.
Remove Selection From Group	Removes the selected clip(s) from the current group.

## ***Trimming Clips***

After you create clips, you may need to trim a clip to fit or edit out bad frames. FeedClip provides a method for trimming so you can create quality clips.

This chapter discusses how to:

- Use the FeedClip Trimmer
- Navigate through clips
- Change Mark In and Mark Out points
- Use additional features of the Trimmer

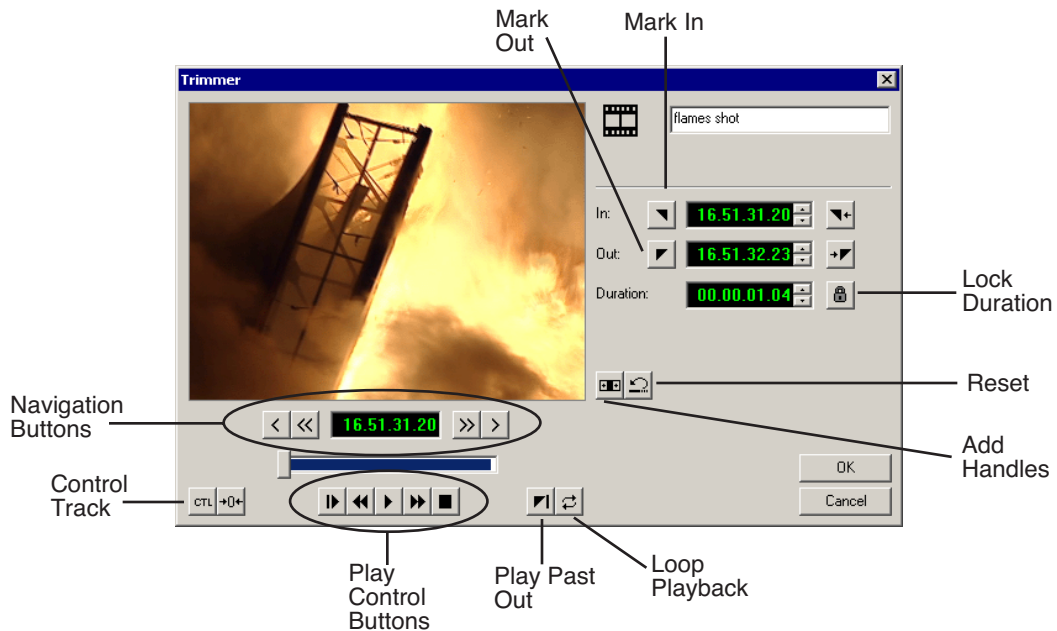


## Tour of the Trimmer

You may often need to shorten your clips or change the starting or ending frame. With FeedClip, you trim clips by changing the Mark In and Mark Out points using the FeedClip Trimmer. The Trimmer is available on the Playback tab.



To open a clip for trimming, select the clip and click the **Trim** icon, or double-click the clip. The Trimmer window opens.



## How to Trim a Clip

Trimming a clip involves these general steps:



1. On the Playback tab, select the clip you want to trim and click the **Trim** icon.
2. Play the clip using any of the navigation methods.



3. Change the Mark In and/or Mark Out Points on the clip.
4. Click **OK** when you are done trimming the clip to save your changes.

The rest of this chapter explains each step in detail.

## Navigating Through Clips

FeedClip provides some quick ways to navigate through your clips to find the frames you need for trimming. You use the Play Control buttons to play through the clip and the Navigation buttons to move to a specified frame.

You can either click the icons or press the corresponding keys on the keyboard.








If you want to change the name of the clip, type the new name in the specified area.







## Playing Clips

The Play Control buttons let you play through your clip — these buttons work like a tape deck.

Icon	Keyboard Key	Description
	<b>Q</b>	Starts playing the clip from the beginning.
	<b>E</b>	Rewinds the clip.
	<b>~</b> or <b>W</b>	Starts playing from the position of the cursor.
	<b>R</b>	Fast forwards the clip.
	<b>space bar</b>	Stops playing the clip.

## Moving to Specified Frames

The Navigation buttons let you move through your clip by frames.

Icon	Keyboard Key	Description
	<b>A</b>	Move back 1 frame.
	<b>D</b>	Move back 10 frames.
	<b>F</b>	Move forward 10 frames.
	<b>S</b>	Move forward 1 frame.

## Changing Mark In and Out Points

Trimming clips with FeedClip is simple. All you need to do is mark new In and Out points for each clip you want to trim.

To trim a clip:



1. Select the clip and click the **Trim** icon to open the Trimmer window.
2. If you need to trim the beginning of the clip, press **F10 (Play)** to play the clip and stop at the frame where you want the clip to start.



You can also use the slider to move to the approximate In point and then use the **A**, **S**, **D**, and **F** keys on the keyboard to find the exact spot.



3. Press **I (Mark In)** on the keyboard to mark a new In point.
4. If you want to trim the end of the same clip, play the clip again and stop at the frame where you want the clip to end.



5. Press **O (Mark Out)** on the keyboard to mark a new Out point.

## More Ways to Use the Trimmer

In addition to trimming clips by marking new In and Out points, there are several other features you can use while trimming.

### Using Handles to Add Frames to Your Clips

When you create clips with FeedClip, handles are automatically added on to the beginning and end of the clip so you have additional frames to choose from when trimming your clips.

To use handles:



1. Click the **Add Handles** icon.

The handles appear as additional frames on the slider in the Trimmer.

2. Mark new In and Out points for your clip using the additional material.





## Locking the Duration of a Clip

Sometimes you need to maintain the length of the clip, but still need to trim it. Using the Lock Duration feature, you can keep the exact length of the clip intact while trimming. FeedClip uses the extra frames in the handles and adjusts the clip. For instance, if you move the Mark In point 5 frames from the beginning of the clip, the Mark Out point moves automatically 5 frames to keep the duration time intact.



To lock the duration of a clip:

- Click the **Lock Duration** icon.

## Playing Past Out

Playing Past Out allows you to create an Out point on the fly while continuing to view media after the Mark Out point. This is useful if you're not sure if the Out point is in the right place.



To play past the Out point:

1. Click the **Play Past Out** icon.
2. Play your clip.

The clip continues playing past the Mark Out point, letting you see the rest of the footage in the clip.

## Using Control Track

Control track is a way to see the actual count of a clip or piece of tape instead of using the timecode.

To use control track:



- Click the **Control Track** icon.

The timecode field changes and the text becomes yellow.

To switch back to viewing the timecode, click the Control Track icon again.

To reset the control track to zero:



- Click the **Reset Control Track** icon while in Control Track mode.

## Looping Playback

You can play the clip in the Trimmer continuously in a loop if you want.

To loop playback:



- Click the **Loop Playback** icon.

To stop looping the playback, click the Loop Playback icon again.

## Resetting the Mark Points on the Clip

If you want to remove edits you've made to the clip, you can reset the clip to the mark point positions from the last time you saved the clip or the last time you used the Trimmer window.

To reset the mark points back to their original positions:



- Click the **Reset** icon.



---

*Chapter 5 Trimming Clips*

## ***Sending Clips***

Once you create clips, you export them for use in a news broadcast. You can send clips to another workstation for further editing, to a network video server for storing, or to a playout machine to play to air.

This chapter discusses how to:

- Group clips for sending
- Select and send your clips to another workstation or video server
- Understand clip status colors



## Grouping Clips

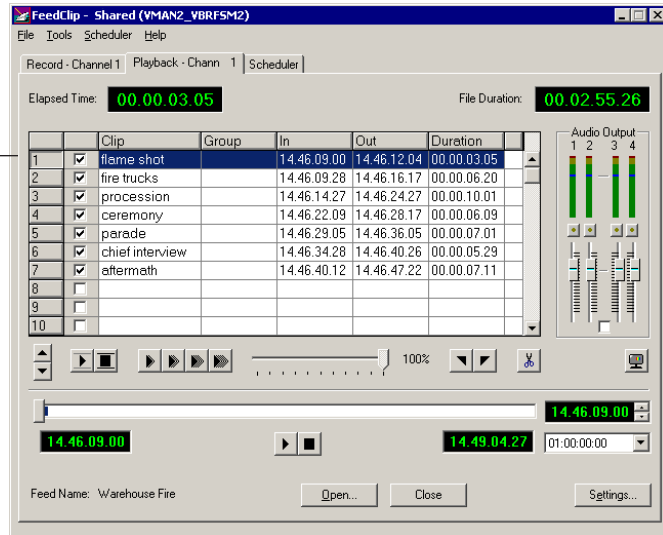
Usually when you send clips to another FeedClip workstation, a NewsEdit workstation, or a video server, the clips are sent as individual clips. You can also create a group of clips that gets sent as a sequence. This is especially useful if you are sending the clips to play to air.

You can group clips from either the Recording or the Playback tab.

To group clips:

1. Select the clips you want to group by clicking on the number of the clip in the playlist.

Clip #1  
selected

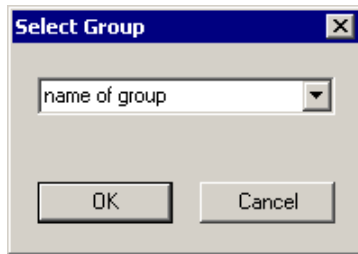


To select a group of consecutive clips, hold down the **Shift** key and click on the clips you want to group.

To select a group of non-consecutive clips in the playlist, hold down the **Ctrl** key and click on the clips to group.

2. Right-click in the playlist and select **Group Selection**.

The Select Group window opens.



3. Type a name for the group of clips or select one from the list.
4. Click **OK**.

When you send a group of clips, FeedClip sends the group as one file with the group name as the name of the sequence.



## Sending Clips

Sending your completed clips to a playback server is the most common way to use FeedClip. You can also send your clips to another workstation or to a network server.

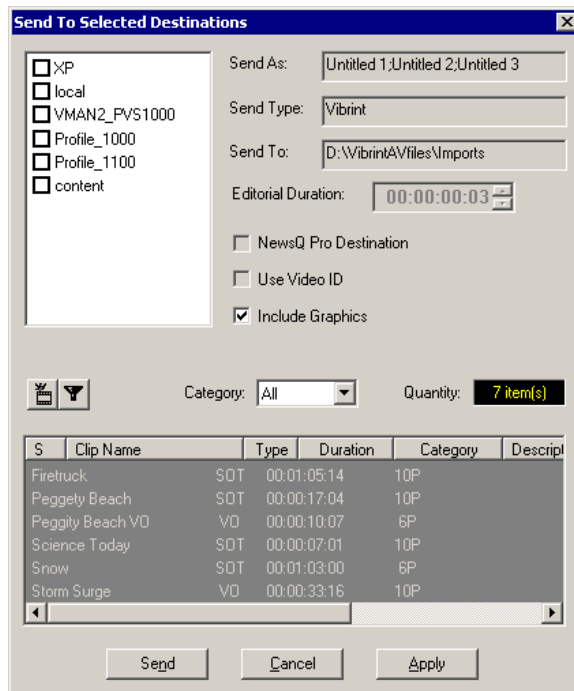
If you have a Profile Video Server, you can send your clips to the server for almost instant playback to air. Once you establish a network between a Profile server and other FeedClip workstations, you can send clips to other workstations as well as to the Profile Video Server.

You follow the same steps to send clips to any FeedClip or NewsEdit workstation or compatible video or playback server.

To send clips:

1. Select the clip(s) you want to send.
2. Press **F2** on the keyboard or right-click in the playlist and select **Send Selection**.

The Select Destination window opens, showing all available locations:



***NOTE: If you need to add another destination, see “Setting Up Send Locations” on page 91.***

3. Click to check the box where you want to send the clip(s).  
Click **Apply** to set this send location as the default.
4. If you want to change the name of the clip, type it in the **Send As:** field.  
You cannot change the **Send Type** or **Send To** fields.
5. Click **Send** to send your clip.  
You can also press **Enter** on the keyboard to send the clip quickly.  
The color in the status column turns yellow while the clip is sent and turns green when its done sending.









## Understanding Clip Status Colors

In the Recording and Playback tabs, a status column lets you know what state each clip is in. As a clip moves through different stages while sending, the colors in the status column change.

If you need to see what each color means, you can view the status legend:

- Select **Help | Status Legend**.



Status Color		Status Description
	Yellow	FeedClip is in the process of sending the selected clip(s) to the file in your Bin.
	Green	The clip(s) have been successfully sent to the file.
	Red	There was an error in the send procedure and the clip was not sent. Try sending your clip again.
	Blue	This clip was overwritten by another file. To prevent this from happening, go to <b>Settings   Loop Record</b> from the Record tab and change the Loop Duration time or turn the loop record option off. You should also uncheck the checkbox <b>Delete Expired Clips Automatically</b> in order to prevent clips being deleted.

## ***The FeedClip Keyboard***















This appendix lists all of the keyboard functions that control FeedClip, including key combinations using the Control and Shift keys.

The keyboard you use with FeedClip is the same keyboard you use with other Digital News Production products, including NewsEdit. Some of the keys are used exclusively for NewsEdit and are not used with FeedClip.

Keys listed in this appendix apply to FeedClip functions.



Appendix *The FeedClip Keyboard*

Icon	Key	Name	Function
	<b>F2</b>	Send	Lets you send a clip or sequence to another destination.
	<b>F3</b>		While recording, marks an In and Out point using the Automarking feature. See “Auto-Marking Settings” on page 96.
	<b>F4</b>		
	<b>F5</b>	Trim In	Cuts the beginning of the clip, the top, off of the selected clips on the timeline.
	<b>F6</b>	Trim Out	Cuts the end of the clip, the tail, off of the selected clips on the timeline.
	<b>F7</b>	Go to Mark In	In the Trimmer, moves to the Mark In point.
	<b>F8</b>	Go to Mark Out	In the Trimmer, moves to the Mark Out point.
	<b>F12</b>	Record	Starts recording the feed.
	<b>~</b>	Play	Plays a clip.
	<b>Q</b>	Play From Start	Plays sequence or clip starting at the beginning.
	<b>W</b>	Play	Plays the Timeline, source or clip.
	<b>Shift + W</b>	Reverse Play	Plays sequence in the Timeline in reverse.
	<b>E</b>	Rewind	Rewinds for both Timeline and Source.
	<b>R</b>	Fast Forward	Fast Forwards for both Timeline and Source.
	<b>Ctrl + R</b>	Record	Starts recording from source or source bin.
	<b>I</b>	Mark In	Marks an In point. If you are using the Automark feature, automatically marks an Out point as well.
	<b>Ctrl + I</b>	Go to Mark In	In the Trimmer, moves to the Mark In point.

Icon	Key	Name	Function
	<b>O</b>	Mark Out	Marks an Out point. If you are using the Automark feature, automatically marks an In point as well.
	<b>Ctrl + O</b>	Go to Mark Out	In the Trimmer, moves to the Mark Out point.
	<b>A</b>	Move 1 frame left	Moves position one frame to the left.
	<b>S</b>	Move 1 frame right	Moves position one frame to the right.
	<b>Ctrl + S</b>	Save	Saves your sequence.
	<b>D</b>	Move 10 frames left	Moves position 10 frames to the left.
	<b>Ctrl + D</b>	Move one second left	Moves position 1 second to the left.
	<b>F</b>	Move 10 frames right	Moves position 10 frames to the right.
	<b>Ctrl + F</b>	Move one second right	Moves position 1 second to the right.
<b>CTL</b>	<b>B</b>	Control Track	In the Trimmer, toggles between Timecode and Control Track.
	<b>N</b>	Reset Control Track	In the Trimmer, resets the Control Track to 00:00:00:00.
Home	<b>Home</b>	Go to Start	Moves the position to the beginning of a clip.
Page  Up	<b>Page Up</b>	Page Up	In the playlist on the Record and Playback tabs, scrolls up one page at a time.  In the Trimmer, moves the clip forward 1/5 of the way with each button press.
Delete	<b>Delete</b>	Delete	Deletes the selected clip from the Bin or the Timeline.
End	<b>End</b>	Go to End	Moves the position to the end of a clip or sequence.
Page  Down	<b>Page Down</b>	Page Down	In the playlist on the Record and Playback tabs, scrolls down one page at a time.  In the Trimmer, moves the clip backward 1/5 of the way with each button press.



---

Appendix *The FeedClip Keyboard*

Icon	Key	Name	Function
←	<b>Left arrow</b>	Shuttle Rewind	Shuttles left in increments of -50%, -75%, -1x, -2x, -3x.
→	<b>Right arrow</b>	Shuttle Fast Forward	Shuttles right in increments of +50%, +75%, -1x, -2x, -3x.
↑	<b>Up arrow</b>	Up arrow	Moves the highlight to the previous clip.
↓	<b>Down arrow</b>	Down arrow	Moves the highlight to the next clip.
←	<b>Numberpad 4</b>	Left 1 frame	Moves the selected clip to the left one frame.
	<b>Ctrl + Numberpad 4</b>	Left 10 frames	Moves the selected clip to the left 10 frames.
→	<b>Numberpad 6</b>	Right 1 frame	Moves the selected clip to the right one frame.
	<b>Ctrl + Numberpad 6</b>	Right 10 frames	Moves the selected clip to the right 10 frames.
	<b>Space Bar</b>	Play/Stop	Toggles between playing and stopping a clip. If you are recording, also stops recording a feed.

## ***Configuring FeedClip***

FeedClip has many options that let you define how your system is set up. While your FeedClip system was pre-configured at the factory, you may want to adjust some options based on how you use FeedClip in your newsroom.

This appendix discusses the FeedClip options.



## Default Configuration Settings

Your FeedClip software sets most configuration options to a default value, as listed below:

Option	Configuration Item		Default Value
Tools/Options/General	Connection Mode	Local	Dependent on software installation choice
		Shared	
	Use House Clock		off
	NTSC Timecode		SMPTE - Drop Frame
	Prompt Before File Overwrite		✓
	Display Time Remaining for Playback		✓
	Abort Time (Hours Remaining)		0.1 (6 mins)
	Channel		1
	Channel 1	Record Name	Channel 1
		Playback Name	Channel 1
Channel 2	Record Name	Channel 2	
	Playback Name	Channel 2	
.../Handles	Edit Clips	In Handles	1 second
		Out Handles	1 second
	Send to File	In Handles	1 second
		Out Handles	1 second
.../Workgroup	Share Name		VibrintAVFiles
.../Send			<<none set up>>
.../Colors			<<as is>>
.../Control Panel	COM Port		None

Option	Configuration Item	Default Value	
.../NewsQ Pro	Primary Database	Server	localhost
		Ports	2000/2001
	Backup Database	Server	<<blank>>
		Ports	2002/2003
	Thumbnails	Server	localhost
		Path	C:\
Record Settings/General	Video Format	NTSC	
	Has Setup	✓	
	Record To	E:/VibrintAVFiles	
	Bit Rate	16 mbits	
	Compression Type	MPEG2	
	Chroma Format	4:2:2	
	Video Resolution	720x480	
	Video Aspect	4:3	
.../Auto-Marking	Adjust Mark In by Reaction Time	Disabled — 1 second	
	Auto-Mark Out Clip From Duration	Disabled — 30 seconds	
.../Inputs	Video Source	Composite	
	Audio Source	Balanced Analog	
.../Outputs	Video Output	Composite	
	Audio Output	Unbalanced Analog	
.../Audio Channel Settings	Channel 1	✓	
	Channel 2	✓	
.../Automation	Protocol	None	
	Comm Port	<None>	





Appendix *Configuring FeedClip*

Option	Configuration Item		Default Value
Playback Settings/General	Video Format		NTSC
	Has Setup		✓
	PreRoll		0
	Turn Off Audio During PreRoll		off
	PostRoll		0
	Turn Off Audio During PostRoll		off
.../Slow Motion	Enable Slow Motion Controls		✓
	Use Full Range in Speed Slider		✓
	Speed 1		0%
	Speed 2		50%
	Speed 3		75%
	Speed 4		100%
.../Genlock	Enable Genlock		off
	Horizontal Phase		0
	Subcarrier Phase		0
.../Outputs	Video Output		Composite
	Audio Output		Unbalanced Analog
.../Automation	Protocol		None
	Comm Port		<None>
Schedule Settings/General	Add Recurring Entries	1-30 days	1 day
	Remove Entries After	1-365 days	3 days
.../Colors			<<as is>>

---

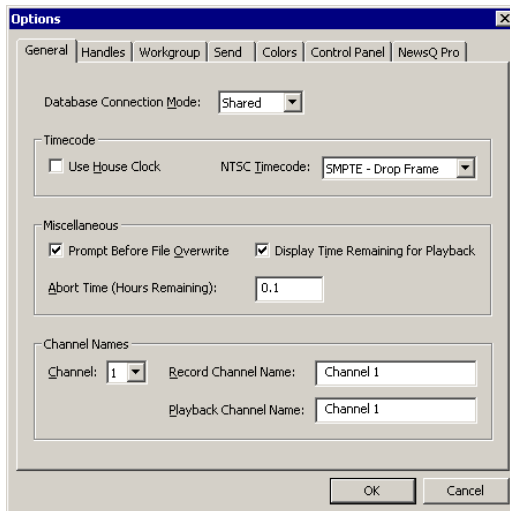
# Setting Options for Your Newsroom

You need to configure FeedClip for the specific equipment you are using in your newsroom.

To configure your FeedClip system:

1. Choose **Tools | Options**.

The Options window opens:



2. Go through each tab on the Options window and configure FeedClip using the descriptions in the sections below.
3. Click **OK** when you are done configuring your system.



## Setting General Options

Setting	Options	Description
Database Connection Mode	<b>Local</b> <b>Shared</b>	Select <b>Local</b> if you are using local disk storage and a local FeedClip database. You have access to files on your local machine only.  Select <b>Shared</b> if you are using shared disk storage and a shared database. You share the Bin with all FeedClip workstations that are part of the NewsShare network.
Use House Clock	<b>On</b> <b>Off</b>	Check this if you want to have FeedClip use your newsroom's house clock to synchronize feeds.  If you turn on this option without having a house clock connected, FeedClip uses the workstation's system clock for the timecode.
NTSC Timecode	<b>SMPTE - Drop Frame</b>	Recommended setting to avoid the time slipping problems associated with non-drop frame.
	<b>SMPTE</b>	Standard format used to represent timecode.
Prompt Before File Overwrite	<b>On</b> <b>Off</b>	Check this option to receive a confirmation prompt before overwriting existing files.
Display Time Remaining for Playback	<b>On</b> <b>Off</b>	Check this option to have FeedClip show you how much time is remaining while playing back a clip in the playlist.
Abort Time (Hours Remaining)	N/A	Enter the amount of time (in hours) before recording stops; FeedClip stops recording when this amount of time is remaining for recording. The default time is 0.1.
Channel	<b>1</b>	Select the channel to name.
	<b>2</b>	
Record Channel Name	N/A	Enter a name for the record channel.
Playback Channel Name	N/A	Enter a name for the playback channel.

---

## Setting Handles

You use Edit Clips handles when you want additional footage at the beginning and end of a clip for additional editing. The default duration is 5 seconds. You use Send to File handles when sending a clip or feed to another workstation or server. The default duration is 2 seconds.

If you want to change the handle duration, type the new number in the field.

## Setting Up Your Workgroup

In order for your FeedClip workstation to be able to send media to other workstations or media servers, you need to set up a workgroup.

To set up a workgroup:

1. Make sure that your Share Name is **VibrantAVFiles**.
2. Click **Update Workgroup List**.

The system lists the available machines for file export.

3. Click **OK**.

## Setting Up Send Locations

Once you create a series of clips, you can send them to another NewsEdit workstation or to a network video server. In order to send clips, you first need to configure FeedClip with each of the send locations you will use.

A send location can be a NewsEdit XT workstation, a Profile Media Server, or a Bin you specify. If you want to store clips on your computer, you can also add a send location for your PC.

To set up a send location:

1. Click **Add**.

The Add Named Destination to Send List window appears.

2. Enter the name of the send location.



3. Select the type of location from the drop-down list.

Send Type	Description
<b>Vibrint</b>	Select <b>Vibrint</b> when the send location is another NewsEdit, FeedClip, or NewsQ workstation, or a NewsQ Pro system.
<b>Profile</b>	Select <b>Profile</b> when the send location is a Profile Media Server.
<b>SeaChange</b>	Select <b>SeaChange</b> when the send location is a SeaChange server.
<b>GXF ftp</b>	Select <b>GXF ftp</b> to send the completed sequence as a GXF stream which can be used for a generic FTP site.
<b>GXF ftp</b>	Select <b>GXF ftp</b> to send the completed sequence as a GXF stream which can be used for a generic FTP site.

4. Check the **Include Graphics** box if you want all graphics to remain with the sequence.
5. Click **Browse** and select the file destination path.  
If you are setting up a Profile Media Server as a send location, open Media Manager, click on the desired destination directory, and drag the folder from Media Manager into this field.
6. If you are setting up a Profile, SeaChange, or GXF ftp send location, enter the following information:
  - **Host Name** — For Profile, automatically fills in with the computer name for the Profile Video Server; for the others, enter the name of the computer.
  - **User Name** — For Profile, automatically fills in as **movie**; leave as is; for the others, enter your user name.
  - **Password** — For Profile, leave this field blank; for the others, enter the password for the send location, if you have one.
7. Check the **NewsQ Pro Destination** box if this send location is a NewsQ Pro server.
8. Click **OK**.

---

## Setting Colors

In the clip list, different colors indicate the status of clips. If you want to change any of the colors in the FeedClip interface:

1. Click the **Change...** button for the playlist row color you want to change.  
The Color window opens.
2. Pick the new color and click **OK**.
3. Change other colors, if you wish.
4. Click **OK** when you are done.

## Setting Controller Options

If you are using an external controller with FeedClip, select the COM Port you are using.

## Setting NewsQ Pro Options

Setting		Description
Primary Database	Server	Enter the server name where the primary NewsQ Pro database resides.
	Ports	Enter the port numbers used to access the primary NewsQ Pro database.
Backup Database	Server	Enter the server name where the secondary NewsQ Pro database resides.
	Ports	Enter the port numbers used to access the secondary NewsQ Pro database.
Thumbnails	Server	Enter the server name where NewsQ Pro stores video clip thumbnails.
	Path	Enter the path to the thumbnail directory.
Categories		Lists the currently configured NewsQ Pro categories.

NewsQ Pro lets you create playlists for airing news broadcasts. Categories let you better organize your clips and separate them for different news shows, for example.

If you want to add categories for NewsQ Pro:

1. Click **Add**; the Add Category window appears.
2. Enter a name for the new category and click **OK**.



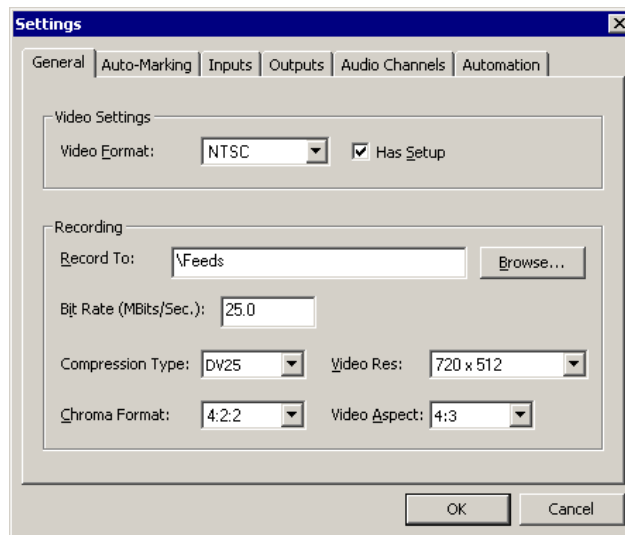
## Configuring Record Settings

You need to configure FeedClip for the type of recording you are doing in your newsroom.

To configure your FeedClip system:

1. Click the **Settings...** button on the Record tab.

The Settings window opens:



2. Go through each tab on the Settings window and configure FeedClip using the descriptions in the sections below.
3. Click **OK** when you are done configuring your system.

## General Settings

Setting	Options	Description
Video Format	<b>NTSC</b> <b>PAL</b>	Select the Video Format you are using.  NTSC has a frame rate of 29.97 frames/sec and is used primarily in the Americas and Japan. PAL has a frame rate of 25 frames/sec and is used in Europe, most of Asia, and Australia.
Has Setup	<b>On</b> <b>Off</b>	Check Has Setup if the analog composite signal carries setup information.
Record To		Enter the default bin location for recorded media files.
Bit Rate	<b>4-50 mbits</b>	Enter the Bit Rate specified by your newsroom engineer. More than 25 mbits is optimal.  Set by newstation engineer. 25 MBits or more is optimal.
Compression Type	<b>MPEG2</b> <b>DV25</b> <b>DV50</b> <b>IMX30</b> <b>IMX40</b> <b>IMX50</b>	Select a Compression Type based on your newstation preference.  The <b>DV50</b> and <b>IMX</b> formats are optional and may not be available on all systems.
Chroma Format	<b>4:1:1</b>	Select the <b>4:1:1</b> Chroma Format if you use DV25 compression.
	<b>4:2:0</b>	Select the <b>4:2:0</b> Chroma Format if you use MPEG2 compression.
	<b>4:2:2</b>	Select the <b>4:2:2</b> Chroma Format if you use DV50 or MPEG2 compression. 4:2:2 offers more color resolution than 4:2:0.
Video Resolution	<b>704 x 480</b>	Select for NTSC systems using MPEG2 compression.
	<b>720 x 480</b>	Select for NTSC systems using DV25, DV50, or MPEG2 compression.
	<b>720 x 512</b>	Select for NTSC systems using MPEG2 compression.
	<b>704 x 576</b>	Select for PAL systems using MPEG2 compression.
	<b>720 x 576</b>	Select for PAL systems using DV25, DV50, or MPEG2 compression.
	<b>720 x 608</b>	Select for PAL systems using MPEG2 compression.
Video Aspect	<b>4:3</b>	Select <b>4:3</b> Video Aspect for regular television format.
	<b>16:9</b>	Select <b>16:9</b> Video Aspect for wide-screen television format.





## Auto-Marking Settings

Setting	Description
Adjust Mark In by Reaction Time	Check this to have FeedClip adjust the Mark In by the reaction time you set. The default duration is 1 second.
Auto-Mark Out Clip From Duration	Check this to have FeedClip automatically create a Mark Out based on the duration of the clip. The default duration is 30 seconds.

## Input Settings

Setting	Options	Description
Video Source	<b>Composite</b> <b>S-Video</b> <b>Component</b> <b>Serial D1</b>	Select the Video Source option that corresponds to the video source's connection to FeedClip.  If you are using the Pro D&A Break Out Box, the Component Y output defaults to a second composite output unless you select <b>Component</b> Video.
Audio Source	<b>Balanced Analog</b> <b>Unbalanced Analog</b> <b>AES/EBU</b> <b>SDI Embedded</b> <b>TDIFF</b>	Select the Audio Source option that corresponds to the audio source's connection to FeedClip.

## Output Settings

Setting	Options	Description
Video Output	<b>Composite</b> <b>S-Video</b> <b>Component</b> <b>Serial D1</b>	Select the Video Output option that corresponds to the video source's connection to FeedClip.  If you are using the Pro D&A Break Out Box, the Component Y output defaults to a second composite output unless you select <b>Component</b> Video.
Audio Output	<b>Balanced Analog</b> <b>Unbalanced Analog</b> <b>AES/EBU</b> <b>SDI Embedded</b> <b>TDIFF</b> <b>SPDIF</b>	Select the Audio Output option that corresponds to the audio source's connection to FeedClip.

---

## Audio Channel Settings

Check the boxes for each of the audio channels you are using for FeedClip input. For example, if you are using two channels make sure to deselect the other two.

## Automation Settings

Setting	Options	Description
Protocol	<b>None</b> <b>Odetics Control Protocol</b>	Select <b>Odetics Control Protocol</b> if you are using an automation system, like NewsQ Pro, to control your NewsQ workstation; otherwise, select <b>None</b> .
Comm Port	<b>COM3</b> through <b>COM10</b>	If you are using the Odetics Control Protocol, select the COM Port to which it is connected.



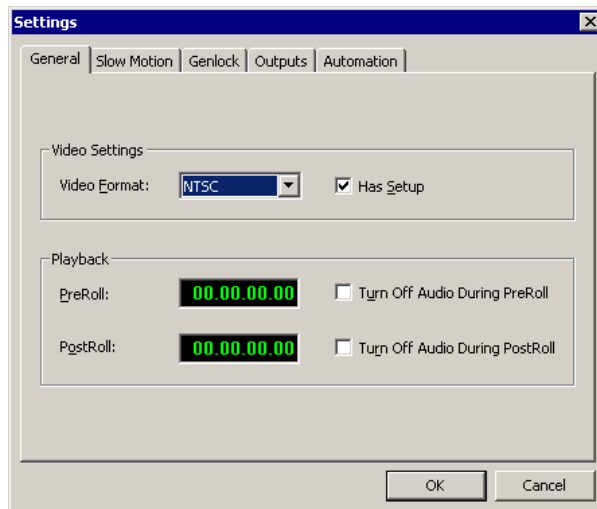
## Configuring Playback Settings

You need to configure FeedClip for the type of playback you are using in your newsroom.

To configure your FeedClip system:

1. Click the **Settings...** button on the Playback tab.

The Settings window opens:



2. Go through each tab on the Settings window and configure FeedClip using the descriptions in the sections below.
3. Click **OK** when you are done configuring your system.

## General Settings

Setting	Options	Description
Video Format	<b>NTSC</b> <b>PAL</b>	Select the Video Format you are using. NTSC has a frame rate of 29.97 frames/sec and is used primarily in the Americas and Japan. PAL has a frame rate of 25 frames/sec and is used in Europe, most of Asia, and Australia.
Has Setup	<b>On</b> <b>Off</b>	Check <b>Has Setup</b> if the analog composite signal carries setup information.
PreRoll		Enter the number of seconds of preroll you want to use for playback of clips. The default duration is zero seconds.
Turn Off Audio During PreRoll	<b>On</b> <b>Off</b>	Check this option if you don't want to hear audio during preroll.
PostRoll		Enter the number of seconds of postroll you want to use when playing clips. The default duration is zero seconds.
Turn Off Audio During PostRoll	<b>On</b> <b>Off</b>	Check this option if you don't want to hear audio during postroll.

## Slow Motion Settings

Setting	Options	Description
Enable Slow Motion Controls	<b>On</b> <b>Off</b>	Check this option to view clips in slow motion during playback.
Use Full Range In Speed Slider	<b>On</b> <b>Off</b>	Check this option to use the slider range of 0% to 100% instead of 0% to the selected top speed.
Speed 1 - Speed 4	<b>0% to 100%</b>	Enter the percentage speed for each of the four speeds. The speeds are on the Playback tab.  The default speeds are: Speed 1 — 0% Speed 2 — 50% Speed 3 — 75% Speed 4 — 100%



## Genlock Settings

Setting	Options	Description
Enable Genlock	<b>On</b> <b>Off</b>	Check this option to use Genlock with FeedClip. Genlock is the synchronization of two television signals at the vertical, horizontal, and chroma phase levels such that the signals may be cut, mixed, or cross-faded without noticeable roll, jump, or chroma shift.
Horizontal Phase	<b>-5148 to +5148</b>	Select the appropriate Horizontal Phase by moving the sliders, typing the number, or using the up and down arrows.
Subcarrier Phase	<b>-180 to +180</b>	Select the appropriate Subcarrier Phase by moving the sliders, typing the number, or using the up and down arrows.
Use Defaults		Click this button to return Genlock settings to their default positions.

## Output Settings

Setting	Options	Description
Video Output	<b>Composite</b> <b>S-Video</b> <b>Component</b> <b>Serial D1</b>	Select the Video Output option that corresponds to the video source's connection to FeedClip.  If you are using the Pro D&A Break Out Box, the Component Y output defaults to a second composite output unless you select <b>Component</b> Video.
Audio Output	<b>Unbalanced Analog</b> <b>Balanced Analog</b> <b>AES/EBU</b> <b>SDI Embedded</b>	Select the Audio Output option that corresponds to the audio source's connection to FeedClip.

## Automation Settings

Setting	Options	Description
Protocol	<b>None</b> <b>Odetics Control Protocol</b>	Select <b>Odetics Control Protocol</b> if you are using an automation system, like NewsQ Pro, to control your NewsQ workstation; otherwise, select <b>None</b> .
Comm Port	<b>COM3</b> through <b>COM10</b>	If you are using the Odetics Control Protocol, select the COM Port to which it is connected.

---

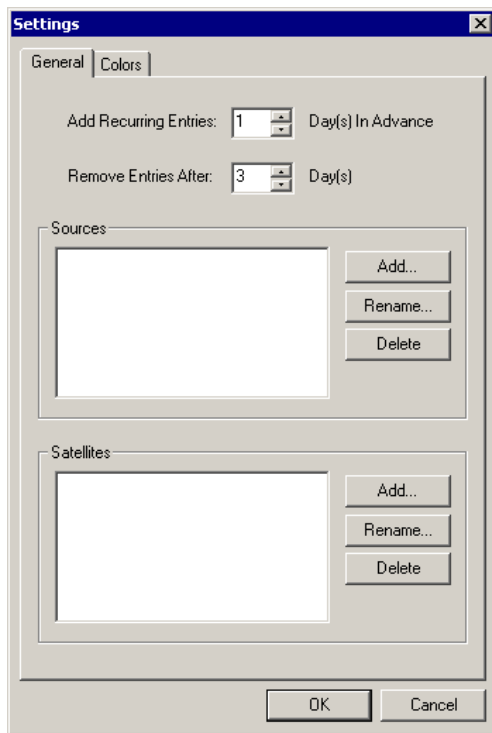
## Configuring Scheduler Settings

You need to configure FeedClip for your scheduling preferences.

To configure your FeedClip system:

1. Click the **Settings...** button on the Scheduler tab.

The Settings window opens:



2. Go through each tab on the Settings window and configure FeedClip using the descriptions in the sections below.
3. Click **OK** when you are done configuring your system.



## General Settings

Setting	Options	Description
Add Recurring Entries	1 - 30 days	Number of days to display recurring entries in the Record tab. The default duration is 1 day.
Remove Entries After	1 - 365 days	Number of days to keep recorded entries before deleting. The default duration is 3 days.

### Adding New Sources or Satellites

You may need to add a new source or satellite to use with FeedClip:

1. Click **Add** in the Sources or Satellites area of the General tab.
2. Enter a name for the new source and click **OK**.

The name of the source is a label to help you identify sources. Names do not affect functionality and are not required.

You can also rename or delete a source or satellite by highlighting the source and clicking the Rename or Delete button.

### Color Settings

In the scheduler list, different colors indicate the status of feeds. If you want to change any of the scheduling colors in the FeedClip interface:

1. Click the **Change...** button for the scheduling row color you want to change.  
The Colors window opens.
2. Pick the new color and click **OK**.
3. If you wish, change other colors.
4. Click **OK** when you are done.

## ***Tips for Using FeedClip***

This appendix describes various tips you can use while recording and playing back feeds. Various techniques for improving FeedClip performance are also provided.





---

Appendix *Tips for Using FeedClip*

Following is a list of tips and techniques for using FeedClip:

- Due to technical limitations with calculating the amount of time available for recording, leave at least a 30 minute safety buffer for available recording time to prevent running out of disk space during recording.
- If you hit the **Stop** button after marking an In and Out of the record page during a feed, the clip you just marked will be removed from the Playlist after a few seconds.

To see the clip you just marked, go to the Playback page and open the file you just created.

- To open a clip on the Playback page, be sure and close any other clips that are currently open.
- When removing clips through **File | Remove**, the total record time indicator will not update for 30 seconds or more.
- If sending subclips seems slow, you can adjust the send handles length at **Tools | Options | Handles** to speed up the send. The trade off is that if you shorten the handles, then you don't have the additional handle material to use for editing once the clip is sent.
- Using **File | Remove**, you can only remove clips created with FeedClip.
- If you can't see source video or audio, click on the **Settings** button on the Record page and go to the Inputs tab to insure your settings for video and audio sources are set correctly.
- If you are using a dual NewsEdit and FeedClip machine, start NewsEdit first to capture the primary channel, then start FeedClip.
- The Playback tab video and audio will always take precedence over the Record tab when monitoring video and audio.
- Long recordings may fragment hard drives fairly quickly and may result in decreased drive performance.

It is advisable to defragment your media drive(s) every 100 hours of use.

- You must enter whole time increments into the loop record duration entry box. It will not accept frames or seconds.

- 
- If you turn on loop record with the loop button and you get an error stating that you don't have enough space for the operation, you should note the maximum duration in the error message, go into **Settings | Loop Record** on the Record page and change the loop duration to less than the maximum amount indicated in the message.
  - You must have Loop Record turned off before using the Scheduler and you must have the Scheduled Record button enabled before scheduled records will take place.
  - It is advisable to leave a safety time buffer of 30 seconds between feeds rather than scheduling feeds immediately subsequent to each other.



---

*Appendix Tips for Using FeedClip*

# Index

---

## A

- adding
  - frames to clips 71
  - new entries to Scheduler 36
- adjusting
  - audio input 51
  - volume 51
- audio
  - adjusting volume 51
  - muting audio channels 51
- audio channels, configuring 97
- auto-marking
  - configuring 96
  - feeds 53
- automation, configuring 97

## B

- buttons
  - mark point 28
  - recording 28
  - transport control 29

## C

- certifications 13
- changing
  - mark points in Trimmer 71
  - playlist colors 34
- clip
  - changing mark points in Trimmer 71
  - deleting 53
  - grouping 54
  - grouping for sending 76
  - locking duration 72

- looping playback in Trimmer 73
- moving to frames in Trimmer 70
- navigating in Trimmer 69
- overview of trimming 68
- playing in Trimmer 70
- reordering 53
- sending 78
- status colors 80
- colors
  - configuring for Scheduler 102
  - definition of 80
  - playlist 34
- compliances 13
- configuring
  - controller 93
  - creating send locations 91
  - general options 90
  - NewsQ Pro 93
  - overview 89
  - playback
    - automation settings 97
    - general settings 99
    - genlock 100
    - output settings 100
    - slow motion 99
  - playlist colors 93
  - recording
    - audio channels 97
    - auto-marking clips 96
    - automation settings 97
    - general settings 95
    - input settings 96
    - output settings 96



---

## Index

- scheduler
  - colors 102
  - general settings 102
  - setting handles 91
  - workgroup 91, 95
- control track, using 73
- controller, setting up 93
- creating
  - clips, overview 19
  - group of clips 54
  - playlist 52
  - sequence 54
- criteria, environmental 16

## D

- database, shared 26
- default configuration settings 86
- deleting clips 53
- disabling a feed 40

## E

- editing feeds 40
- enabling the Scheduler 35
- environmental criteria 16

## F

- feed
  - auto-marking 53
  - disabling an event 40
  - editing 40
  - modifying 40
  - recording 49
  - removing 40

- scheduling 36

## FeedClip

- audio input 51
- auto-marking feeds 53
- creating a playlist 52
- default settings 86
- definition of 18
- description of keyboard 82
- keyboard 28
- navigating 27
- overview 19
- overview of window 20
- playback tab, description of 24
- rearranging playlist 53
- record tab, description of 23
- recording a feed 49
- scenarios for using 18
- scheduler tab, description of 25
- setting options 89
- tips for using 104
- Trimmer, description of 68
- two channel window, description of
  - 21
- viewer window 22

FeedClip modes 26

## G

- genlock, configuring 100
- getting around FeedClip 27
- grouping
  - clips 54
  - clips for sending 76
- guidelines, safety 9

## H

handles

- adding frames to clips 71
- setting 91

## K

keyboard

- description of 28
- description of keys 82
- mark point buttons 28
- navigating around FeedClip 27
- recording buttons 28
- transport control buttons 29

## L

local mode 26

locking clip duration 72

looping clip playback 73

## M

mark point buttons 28

mark points, resetting in Trimmer 73

menus

- navigating around FeedClip 27
- right-click 27

modes, FeedClip 26

modifying entries in the Scheduler 40

mouse, navigating around FeedClip 27

moving to frames in Trimmer 70

muting audio channels 51

## N

navigating

- around FeedClip 27
- clips in Trimmer 69
- keyboard 27
- mouse 27
- shortcut menus 27

NewsQ Pro

- setting up 93
- using with FeedClip 93

## O

options

- creating send locations 91
- default settings 86
- handles 91
- playback
  - automation 97
  - general settings 99
  - genlock 100
  - output settings 100
  - slow motion 99

recording

- audio channels 97
- auto-marking clips 96
- automation 97
- general settings 95
- input settings 96
- output settings 96

scheduler

- colors 102
- general settings 102
- setting for your newsroom 89
- setting general options 90



- setting playlist colors 93
- setting up controller 93
- setting up NewsQ Pro 93
- setting up send locations 91
- setting workgroup 91, 95

Out Point, making on the fly 72

overview

- creating clips 19
- FeedClip window 20

## P

playback window 24

playback, using context-sensitive menu  
66

playing clips in Trimmer 70

playing clips to air 78

- grouping clips 76

playing past out 72

playlist

- deleting clips 53
- rearranging 53
- reordering clips 53

playlist colors 34

- setting up 93

precautions 9, 10

product support 7

## R

rearranging playlist 53

recording

- buttons 28
- creating a playlist 52
- description of window 48
- feeds 49

- using context-sensitive menu 55

recording window 23

removing feeds from Scheduler 40

reordering clips 53

## S

safety guidelines 9

scenarios for using FeedClip 18

Scheduler

- adding new entries 36
- configuring colors 102
- description of 32
- enabling 35
- modifying entries 40
- playlist colors 34
- removing feeds 40
- using context-sensitive menu 45

scheduling

- feeds 36, 40
- window 25

send locations, creating 91

sending

- clips 78
- completed sequences, setting up lo-  
cations 91

service safety 12

setting

- handles 91
- overview of options 89

setting up FeedClip

- controller 93
- default settings 86
- general options 90
- handles 91

NewsQ Pro 93  
playback  
    automation 97  
    general settings 99  
    genlock 100  
    output settings 100  
    slow motion 99  
playlist colors 93  
recording  
    audio channels 97  
    auto-marking clips 96  
    automation 97  
    general settings 95  
    input settings 96  
    output settings 96  
scheduler  
    colors 102  
    general settings 102  
send locations 91  
workgroup 91, 95  
shared mode 26  
slow motion, configuring 99  
status colors 80  
support 7

## T

technical support 7  
tips 104  
toolbar, Scheduler 33  
transport control buttons 29  
Trimmer  
    adding frames to clips 71  
    changing mark points 71  
    control track 73

description of 68  
locking clip duration 72  
looping clip playback 73  
moving to frames 70  
navigating clips 69  
overview 68  
playing clips 70  
resetting mark points 73

## U

using the scheduling tool 35

## V

viewer window 22  
volume, adjusting 51

## W

window  
    playback 24  
    recording 23  
    scheduling 25  
    two channels 21  
    viewing media 22  
workgroup, setting up 91, 95





---

*Index*