

# NewsroomSuite

DIGITAL NEWS PRODUCTION TOOLS

Installation and Configuration Guide

SOFTWARE VERSION 5.1

071829400  
MARCH 2004

*the most watched worldwide*

# CERTIFICATE

Number: 510057.001

The Quality System of:

## Thomson Broadcast & Media Solutions

**TBMS**  
400 Providence Mine Road  
Nevada City, CA 95945

**TBMS**  
Weiterstadt, Germany  
Brunnenweg 9  
D-64331 Weiterstadt, Germany

**TBMS**  
15655 SW Greystone Ct.  
Beaverton, OR 97006

**TBMS**  
Nederland B.V.  
4800 RP BREDA  
The Netherlands

**TBMS/Nextream**  
Rennes, France  
Rue du Clos Courtel  
Cesson-Sevigne, Cedex  
France

**TBMS**  
17 rue du Petit Albi-BP 8244  
95801 Cergy Pontoise  
Cergy, France

**TBMS**  
10 Presidential Way, 3<sup>rd</sup> Floor, Suite 300  
Woburn, MA 08101

**TBMS**  
2300 South Decker Lake Blvd.  
Salt Lake City, UT 84119

**TBMS - PCB**  
Rennes, France  
Rue du Clos Courtel  
Cesson-Sevigne, Cedex  
France

**TBMS/Nextream**  
Technopole Brest Iroise  
CS 73808  
29238 Brest Cedex 3  
France

Including its implementation, meets the requirements of the standard:

## ISO 9001:2000

Scope: The design, manufacture and support of video hardware and software products and related systems.

This Certificate is valid until:	June 14, 2006
Revision Date:	September 9, 2003
Renewal Date:	June 14, 2003
Issued for the first time:	June 14, 2000



H. Pierre Sallé  
President  
KEMA-Registered Quality, Inc.

The method of operation for quality certification is defined in the KRQ General Terms and Conditions for Quality Certification. Integral publication of this certificate and adjoining reports is allowed.

# NewsroomSuite

DIGITAL NEWS PRODUCTION TOOLS

Installation and Configuration Guide



SOFTWARE VERSION 5.1

071829400  
MARCH 2005

*the most watched worldwide*

## Copyright

Copyright © 2005 Thomson Broadcast and Media Solutions, Inc. All rights reserved. Printed in the United States of America.

This document may not be copied in whole or in part, or otherwise reproduced except as specifically permitted under U.S. copyright law, without the prior written consent of Thomson Broadcast and Media Solutions, Inc., P.O. Box 59900, Nevada City, California 95959-7900

## Trademarks

ContentShare, Grass Valley, M-Series, Media Manager, NewsEdit XT, NewsQ, NewsQ Pro, NewsShare, and Profile are either registered trademarks or trademarks of Thomson Broadcast and Media Solutions, Inc. in the United States and/or other countries. Other trademarks used in this document are either registered trademarks or trademarks of the manufacturers or vendors of the associated products. Thomson Broadcast and Media Solutions, Inc. products are covered by U.S. and foreign patents, issued and pending. Additional information regarding Thomson Broadcast and Media Solution, Inc.'s trademarks and other proprietary rights may be found at [www.thomsongrassvalleygroup.com](http://www.thomsongrassvalleygroup.com).

## Disclaimer

Product options and specifications subject to change without notice. The information in this manual is furnished for informational use only, is subject to change without notice, and should not be construed as a commitment by Thomson Broadcast and Media Solutions, Inc. Thomson Broadcast and Media Solutions, Inc. assumes no responsibility or liability for any errors or inaccuracies that may appear in this publication.

## U.S. Government Restricted Rights Legend

Use, duplication, or disclosure by the United States Government is subject to restrictions as set forth in subparagraph (c)(1)(ii) of the Rights in Technical Data and Computer Software clause at DFARS 252.277-7013 or in subparagraph c(1) and (2) of the Commercial Computer Software Restricted Rights clause at FAR 52.227-19, as applicable. Manufacturer is Thomson Broadcast and Media Solutions, Inc., P.O. Box 59900, Nevada City, California 95959-7900 U.S.A.

## Revision Status

Rev Date	Description
March 28, 2005	Initial release, part number 071-8294-00

# Contents

---

## **Preface**

Grass Valley Product Support .....	5
Safety Summaries .....	7
Safety Terms and Symbols .....	8
Service Safety Summary .....	9
Certifications and Compliances .....	10
Environmental Criteria .....	13

## **Chapter 1**

### **Introducing the NewsroomSuite System**

The XT Family Components .....	16
Computer .....	16
Breakout Box .....	17
Keyboard and Mouse .....	17
Monitor .....	17
Software .....	18
Comparing the NewsEdit Products .....	18
NewsEdit SC .....	19
NewsEdit LT .....	19
Other Components .....	19
Storage Options .....	20
Digital News Production Workgroup Layout .....	21

## **Chapter 2**

### **Setting Up the Hardware**

Site Requirements .....	24
Power Requirements .....	24
Synchronization Requirements .....	25
Environmental Requirements .....	25
Networking Requirements .....	25
Fibre Channel .....	25
Ethernet Switch .....	25
Cabling Guidelines .....	26
Connecting System Cables .....	28
Connecting the Keyboard and Mouse .....	29
Connecting the Computer Monitor .....	29
Connecting the Power Cable .....	29
Connecting the Breakout Box .....	30
Pro Digital/Analog Breakout Box .....	30
Pro Analog Breakout Box .....	30
Connecting the ATI Input Adapter .....	30
Connecting the Breakout Box Directly .....	30
Using an External Monitor .....	31



## Contents

---

	Connecting Network Cables . . . . .	31
	Ethernet Connection . . . . .	31
	Fibre Channel Connection . . . . .	31
	Connecting a Video Tape Recorder . . . . .	32
	Connecting Audio and Video Cables to the Breakout Box . . . . .	32
	Connecting an Audio Mixer . . . . .	34
<b>Chapter 3</b>	<b>Connecting External Controllers to NewsEdit</b>	
	Introducing the External Controllers . . . . .	36
	Connecting an External Controller to the NewsEdit Workstation . . . . .	37
	Connecting the Jog/Shuttle Controller . . . . .	37
	Connecting the Motorized Fader or the Effects Controller . . . . .	37
	Verifying the COM Port . . . . .	38
	Assigning a COM Port for the Controller . . . . .	39
<b>Chapter 4</b>	<b>Turning On the NewsroomSuite Computer</b>	
	Powering Up the System . . . . .	42
	Standalone System . . . . .	42
	Rackmount System . . . . .	42
	Understanding the System Self Test . . . . .	43
	Running the System Self Test Manually . . . . .	44
	Troubleshooting the System Self Test . . . . .	45
	Launching the NewsroomSuite Applications . . . . .	46
<b>Chapter 5</b>	<b>Installing Software</b>	
	Installing Profile Software . . . . .	48
	Installing the NewsroomSuite Software . . . . .	50
	Local Storage System . . . . .	51
	Shared Storage System . . . . .	52
	Configuring the Disk Volume . . . . .	53
	Obtaining a Software License Number . . . . .	54
<b>Chapter 6</b>	<b>Configuring Your System</b>	
	Setting Up the Host Table . . . . .	56
	Setting Up Media Files for Sharing . . . . .	57
	Setting Up the NewsEdit Bin . . . . .	58
	Organizing Your Bins . . . . .	58
	Creating a New Bin . . . . .	59
	Setting Up a SmartBin . . . . .	60
	Creating a Video Server SmartBin . . . . .	61
	Creating a Media Import SmartBin . . . . .	62

<b>Chapter 7</b>	<b>Configuring NewsEdit Options</b>	
	Default Configuration Settings . . . . .	64
	Adding Video Sources to NewsEdit . . . . .	68
	Setting General Source Options . . . . .	69
	Setting Connections . . . . .	69
	Setting Record Channels . . . . .	70
	Setting Preroll . . . . .	70
	Setting Record Handles . . . . .	70
	Setting Options for Your Newsroom . . . . .	71
	Setting General Options . . . . .	72
	Setting Record Options . . . . .	73
	Setting Output Options — NewsEdit XT only . . . . .	74
	Setting Up a Workgroup . . . . .	74
	Setting Up Send Locations . . . . .	75
	Setting Handles . . . . .	77
	Setting Timeline Options . . . . .	77
	Setting Graphics Options . . . . .	78
	Setting Controller Options . . . . .	78
	Setting NewsQ Pro Options . . . . .	79
<b>Chapter 8</b>	<b>Configuring FeedClip Options</b>	
	Default Configuration Settings . . . . .	82
	Setting Options for Your Newsroom . . . . .	86
	Setting General Options . . . . .	87
	Setting Handles . . . . .	88
	Setting Up Your Workgroup . . . . .	88
	Setting Up Send Locations . . . . .	88
	Setting Colors . . . . .	90
	Setting Controller Options . . . . .	90
	Setting NewsQ Pro Options . . . . .	90
	Configuring Record Settings . . . . .	91
	General Settings . . . . .	92
	Auto-Marking Settings . . . . .	93
	Input Settings . . . . .	93
	Output Settings . . . . .	93
	Audio Channel Settings . . . . .	94
	Automation Settings . . . . .	94
	Configuring Playback Settings . . . . .	95
	General Settings . . . . .	96
	Slow Motion Settings . . . . .	96
	Genlock Settings . . . . .	97
	Output Settings . . . . .	97
	Automation Settings . . . . .	97



---

## Contents

	Configuring Scheduler Settings . . . . .	98
	General Settings . . . . .	99
	Color Settings . . . . .	99
<b>Chapter 9</b>	<b>Configuring NewsQ Options</b>	
	Default Configuration Settings . . . . .	102
	Setting Options for Your Newsroom . . . . .	104
	Setting General Options . . . . .	105
	Setting Output Options . . . . .	106
	Setting Up a Workgroup . . . . .	106
	Setting Up Send Locations . . . . .	107
	Setting Handles . . . . .	108
	Setting NewsQ Pro Options . . . . .	109
	Configuring Playback Channel Settings . . . . .	110
	Configuring GPIO Settings . . . . .	111
	Configuring Genlock Settings . . . . .	113
	Configuring Automation Settings . . . . .	113
<b>Appendix A</b>	<b>Pin Assignments . . . . .</b>	<b>115</b>
<b>Appendix B</b>	<b>Field Replacable Parts . . . . .</b>	<b>119</b>
	<b>Index</b>	



## Grass Valley Product Support

To get technical assistance, check on the status of problems, or report new problems, contact Grass Valley Product Support via e-mail, the Web, or by phone or fax.

### Web Technical Support

To access support information on the Web, visit the product support Web page on the Grass Valley Web site. You can download software or find solutions to problems by searching our Frequently Asked Questions (FAQ) database.

**World Wide Web:** <http://www.thomsongrassvalley.com/support/>

**Technical Support E-mail Address:** [gvgtechsupport@thomson.net](mailto:gvgtechsupport@thomson.net)

### Phone Support

Use the following information to contact product support by phone during business hours. Afterhours phone support is available for warranty and contract customers.

United States	(800) 547-8949 (Toll Free)	France	+33 (1) 34 20 77 77
Latin America	(800) 547-8949 (Toll Free)	Germany	+49 6155 870 606
Eastern Europe	+49 6155 870 606	Greece	+33 (1) 34 20 77 77
Southern Europe	+33 (1) 34 20 77 77	Hong Kong	+852 2531 3058
Middle East	+33 (1) 34 20 77 77	Italy	+39 06 8720351
Australia	+61 1300 721 495	Netherlands	+31 35 6238421
Belgium	+32 2 3349031	Poland	+49 6155 870 606
Brazil	+55 11 5509 3440	Russia	+49 6155 870 606
Canada	(800) 547-8949 (Toll Free)	Singapore	+656379 1390
China	+86 106615 9450	Spain	+ 34 91 512 03 50
Denmark	+45 45968800	Sweden	+46 87680705
Dubai	+ 971 4 299 64 40	Switzerland	+41 (1) 487 80 02
Finland	+35 9 68284600	UK	+44 870 903 2022



---

## *Preface*

### **Authorized Support Representative**

A local authorized support representative may be available in your country. To locate the support representative for your country, visit the product support Web page on the Grass Valley Web site.

### **Profile Users Group**

You can connect with other Profile XP Media Platform users to ask questions or share advice, tips, and hints. Send e-mail to [profile-users@thomson.net](mailto:profile-users@thomson.net) to join the community and benefit from the experience of others.

# Safety Summaries

## General Safety Summary

Review the following safety precautions to avoid injury and prevent damage to this product or any products connected to it.

*Only qualified personnel should perform service procedures.*

While using this product, you may need to access other parts of the system. Read the *General Safety Summary* in other system manuals for warnings and cautions related to operating the system.

Review all system operator manuals, including manuals in electronic format on the system hard drive.

## Injury Precautions

### **Use Proper Power Cord**

To avoid fire hazard, use only the power cord specified for this product.

### **Ground the Product**

This product is grounded through the grounding conductor of the power cord. To avoid electric shock, the grounding conductor must be connected to earth ground. Before making connections to the input or output terminals of the product, ensure that the product is properly grounded.

### **Do Not Operate Without Covers**

To avoid electric shock or fire hazard, do not operate this product with covers or panels removed.

### **Do Not Operate in Wet/Damp Conditions**

To avoid electric shock, do not operate this product in wet or damp conditions.

### **Do Not Operate in an Explosive Atmosphere**

To avoid injury or fire hazard, do not operate this product in an explosive atmosphere.

### **Avoid Exposed Circuitry**

To avoid injury, remove jewelry such as rings, watches, and other metallic objects. Do not touch exposed connections and components when power is present.



## Product Damage Precautions

<b>Use Proper Power Source</b>	Do not operate this product from a power source that applies more than the voltage specified.
<b>Provide Proper Ventilation</b>	To prevent product overheating, provide proper ventilation.
<b>Do Not Operate With Suspected Failures</b>	If you suspect there is damage to this product, have it inspected by qualified service personnel.
<b>Battery Replacement</b>	To avoid damage, replace only with the same or equivalent type recommended by the circuit board manufacturer. Dispose of used battery according to the circuit board manufacturer's instructions.

## Safety Terms and Symbols

### Terms in This Manual



These terms may appear in this and other product manuals:

**WARNING:** Warning statements identify conditions or practices that can result in personal injury or loss of life.



**CAUTION:** Caution statements identify conditions or practices that can result in damage to the equipment or other property.

### Terms on the Product

These terms may appear on the product:

**DANGER** indicates a personal injury hazard immediately accessible as one reads the marking.

**WARNING** indicates a personal injury hazard not immediately accessible as you read the marking.

**CAUTION** indicates a hazard to property including the product.

**Symbols on the Product**



The following symbols may appear on the product:

DANGER high voltage



Protective ground (earth) terminal



ATTENTION – refer to manual

## **Service Safety Summary**

**Do Not Service Alone**

Do not perform internal service or adjustment of this product unless another person capable of rendering first aid and resuscitation is present.

**No Power Switch**

To avoid electric shock, disconnect the main power by means of the power cord. The power cord is the main power disconnect. Ensure that the power cord is easily accessible at the rear of the product or at the power receptacle.

**Use Care When Servicing With Power On**

Dangerous voltages or currents may exist in this product. Disconnect power and remove battery (if applicable) before removing protective panels, soldering, or replacing components.

To avoid electric shock, do not touch exposed connections.



---

## Certifications and Compliances

### **Canadian Certified Power Cords**

Canadian approval includes the products and power cords appropriate for use in the North America power network. All other power cords supplied are approved for the country of use.

### **FCC Emission Control**

This equipment has been tested and found to comply with the limits for a Class A digital device, pursuant to Part 15 of the FCC Rules. These limits are designed to provide reasonable protection against harmful interference when the equipment is operated in a commercial environment. This equipment generates, uses, and can radiate radio frequency energy and, if not installed and used in accordance with the instruction manual, may cause harmful interference to radio communications. Operation of this equipment in a residential area is likely to cause harmful interference in which case the user will be required to correct the interference at his own expense. Changes or modifications not expressly approved by Grass Valley can affect emission compliance and could void the user's authority to operate this equipment.

### **Canadian EMC Notice of Compliance**

This digital apparatus does not exceed the Class A limits for radio noise emissions from digital apparatus set out in the Radio Interference Regulations of the Canadian Department of Communications.

Le présent appareil numérique n'émet pas de bruits radioélectriques dépassant les limites applicables aux appareils numériques de la classe A prescrites dans le Règlement sur le brouillage radioélectrique édicté par le ministère des Communications du Canada.

### **Canadian Certified AC Adapter**

Canadian approval includes the AC adapters appropriate for use in the North America power network. All other AC adapters supplied are approved for the country of use.

### **EN55022 Class A Warning**

For products that comply with Class A. In a domestic environment this product may cause radio interference in which case the user may be required to take adequate measures.

## **Laser Compliance**

### **Laser Safety Requirements**

The device used in this product is a Class 1 certified laser product. Operating this product outside specifications or altering its original design may result in hazardous radiation exposure, and may be considered an act of modifying or new manufacturing of a laser product under U.S. regulations contained in 21CFR Chapter 1, subchapter J or CENELEC regulations in HD 482 S1. People performing such an act are required by law to recertify and reidentify this product in accordance with provisions of 21CFR subchapter J for distribution within the U.S.A., and in accordance with CENELEC HD 482 S1 for distribution within countries using the IEC 825 standard.

### **Laser Safety**

Laser safety in the United States is regulated by the Center for Devices and Radiological Health (CDRH). The laser safety regulations are published in the “Laser Product Performance Standard,” Code of Federal Regulation (CFR), Title 21, Subchapter J.

The International Electrotechnical Commission (IEC) Standard 825, “Radiation of Laser Products, Equipment Classification, Requirements and User’s Guide,” governs laser products outside the United States. Europe and member nations of the European Free Trade Association fall under the jurisdiction of the Comité Européen de Normalization Electrotechnique (CENELEC).

### **FCC Emission Limits**

This device complies with Part 15 of the FCC Rules. Operation is subject to the following two conditions: (1) This device may not cause harmful interference, and (2) this device must accept any interference received, including interference that may cause undesirable operation.



## Certification

Category	Standard
Safety	<i>Designed/tested for compliance with:</i> <b>ANSI/UL60950-2000</b> - Safety of Information Technology Equipment <b>IEC 60950</b> - Safety of Information Technology Equipment (3rd edition, 1999) <b>CAN/CSA C22.2, No. 60950-00</b> - Safety of Information Technology Equipment <b>EN60950:2000</b> - Safety of Information Technology Equipment (3rd edition)



## Environmental Criteria

The following table lists the environmental criteria for the NewsroomSuite system.

Characteristics	Description
Operating Temperature	<i>Requirement:</i> 10° to 40°C
Storage Temperature	<i>Requirement:</i> -40° to 65°C
Operating Altitude	<i>Requirement:</i> To 10,000 feet <i>Supplemental Data:</i> IEC 60950 compliant to 2000 meters
Storage Altitude	<i>Requirement:</i> To 40,000 feet
Mechanical Shock	<i>Supplemental Data:</i> Class 5 (30G) Grass Valley 001131500
Random Vibration	<i>Requirement:</i> Operational: Class 6 Thomson Grass Valley 001131500 <i>Requirement:</i> Non-Operational: Class 5 Thomson Grass Valley 001131500
Transportation	<i>Requirement:</i> Thomson Grass Valley 001131500
Equipment Type	<i>Supplemental Data:</i> Information Technology
Equipment Class	<i>Supplemental Data:</i> Class 1
Installation Category	<i>Requirement:</i> Category II Local level mains, appliances, portable equipment, etc.
Pollution Degree	<i>Requirement:</i> Level 2 operating environment, indoor use only.
Relative Humidity	<i>Requirement:</i> Operating 80% from +30° to +40°C Non-Operating 90% from +30° to +60°C Do not operate with visible moisture on the circuit boards



---

*Preface*

## ***Introducing the NewsroomSuite System***

The NewsroomSuite system is a combination of hardware and software that provides you with the tools necessary to create and manage content for your news broadcasts.

The Digital News Production products include the XT family, NewsEdit SC, and NewsEdit LT. The XT family, which includes NewsEdit, FeedClip, and NewsQ, provides the most powerful system for news editing. NewsEdit SC provides editing capabilities in a software codec system, and NewsEdit LT provides portable editing capability in the field.

This chapter discusses:

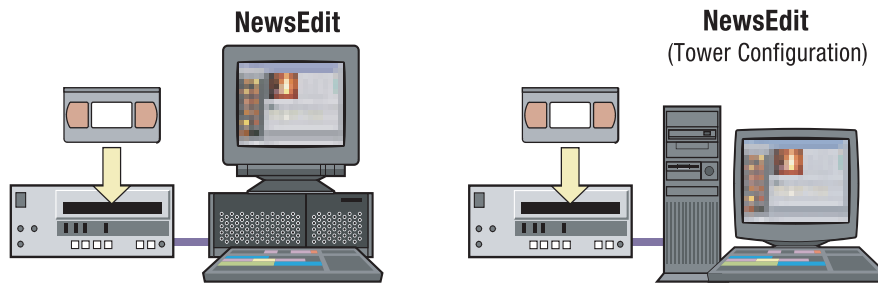
- The XT family components
- How the NewsEdit products compare
- NewsEdit SC
- NewsEdit LT
- Other components
- Storage Options
- The Digital News Production workgroup layout



## The XT Family Components

The XT family consists of several components comprising a digital news production system. All of the NewsroomSuite software applications, NewsEdit XT, FeedClip, and NewsQ run on the XT platform.

### Computer

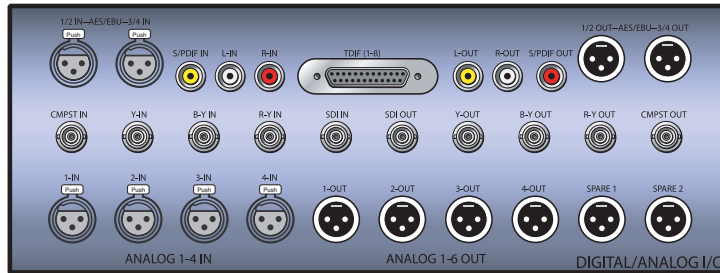


The XT computer is a personal computer housing these components:

- One of 4 Targa boards to provide video compression: DV25 (with MPEG50); DV50; IMX; or Dual DV50 and IMX.
- VGA card
- RS-422 controller card
- Hard drive with NTFS format for operating system
- 3.5 inch floppy drive; reads and writes to 1.44 MB diskettes
- CD-ROM reader; required for installing software
- Media drives (36, 72, or 146 GB)
- Built-in TCP/IP compatible Ethernet LAN connection
- Windows2000 operating system
- Two serial ports
- Optional Fibre Channel or Gigabit Ethernet network cards

The XT system is available in either a standalone or rackmount version.

## Breakout Box



Pro Digital/Analog Breakout Box

The NewsroomSuite computer comes with a Breakout Box (BOB) to provide video and audio input and output. The BOB connects to the NewsroomSuite computer's Targa board. All video and audio inputs and outputs to be used with NewsEdit, FeedClip, and NewsQ plug into the BOB.

There are 2 different types of Breakout Boxes: Pro Analog and Pro Digital/Analog.

## Keyboard and Mouse



The XT system's keyboard has color-coded keys that allow you to see editing commands at a glance. Keys correspond to NewsEdit, FeedClip, and NewsQ functions. The NewsroomSuite system also includes a standard PS/2 mouse.

## Monitor

You can have one or two computer monitors attached to your NewsroomSuite system. In a dual-monitor configuration, one monitor usually displays multiple bins, while the rest of the NewsroomSuite applications display on the other monitor.



## Software

NewsroomSuite software consists of the following Digital News Production applications:

- NewsEdit—Nonlinear editor
- FeedClip—Feed capture system, designed for live events and sporting contests
- NewsQ—Manual playback system

## Comparing the NewsEdit Products

This table shows how each of the NewsEdit products, XT, SC, and LT compare in their features:

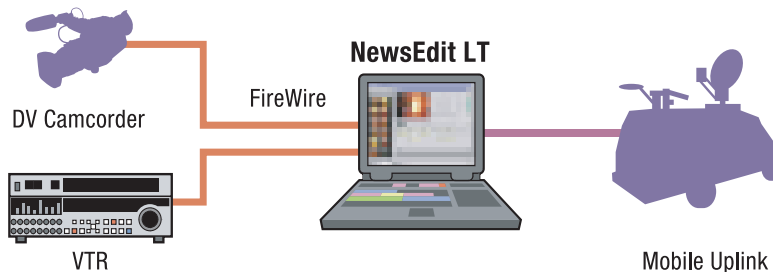
	<b>NewsEdit XT</b>	<b>NewsEdit SC</b>	<b>NewsEdit LT</b>
Codec	Hardware Targa 3K	Software	Software
Platform	Tower or Rack	Tower or Rack	Laptop
Media Formats NTSC	DV, DVCAM, DVCPRO + MPEG, IMX	DV, DVCAM, DVCPRO	DV, DVCAM, DVCPRO
Media Formats PAL	DV, DVCAM, DVCPRO + MPEG, IMX	DV, DVCAM, DVCPRO	DV, DVCAM, DVCPRO
Max Data Rate	50 Mb/s	25 Mb/s	25 Mb/s
Breakout Box Required	Yes	No (IEEE 1394 Firewire)	No (IEEE 1394 Firewire)
Ethernet Workgroup	Yes	Yes	Yes
Fibre Channel Option	Yes	Yes (no for SCE Option)	No
GXF Transfer Support	Yes	Yes	Yes
Color Correction and 2D Support	Yes	Yes	Yes
3D Support	Yes	No	No
Titling Options	Yes	Yes	Yes
Cuts and Transitions	Yes	Yes	Yes

## NewsEdit SC

The NewsEdit SC system is the same personal computer as the XT platform computer, except it has no video compression board; video compression is accomplished with software. Available with DV25 video compression, it also includes a 1394 card for deck control and audio/visual interfacing.

NewsEdit SC uses the Windows XP operating system.

## NewsEdit LT



Designed for field editing, the NewsEdit LT system is a laptop computer with DV25 video compression accomplished with software, just like the NewsEdit SC system. It also includes a 1394 network card and 60 GB of internal storage.

NewsEdit LT comes with a color-coded keyboard, like NewsEdit XT, letting you perform editing functions quickly.

NewsEdit LT uses the Windows XP operating system.

## Other Components

There are several additional components you may wish to use with your NewsroomSuite system:

- XRE Server, used for these services:
  - SmartBin Service (see the *SmartBins Instruction Guide*, part number 071-8370)
  - Domain Controller for Open SAN security (see the *Open SAN Security Instruction Guide*, part number 071-8369)
- Video Tape Recorder (VTR)—Allows you to use footage from video tapes.



---

## Chapter 1 *Introducing the NewsroomSuite System*

- External monitor—Displays standard NTSC or PAL output.
- Audio mixer, such as Mackie 1402VLZPro—Allows greater control of audio input.
- External controllers—The Jog/Shuttle Controller, Motorized Fader Controller, and Effects Controller (available from Thomson Grass Valley) allow you to control the NewsroomSuite applications. See Chapter 3, “Connecting External Controllers to NewsEdit” for more information.
- Speakers

### Storage Options

With the NewsroomSuite system, you have three options for storing news files:

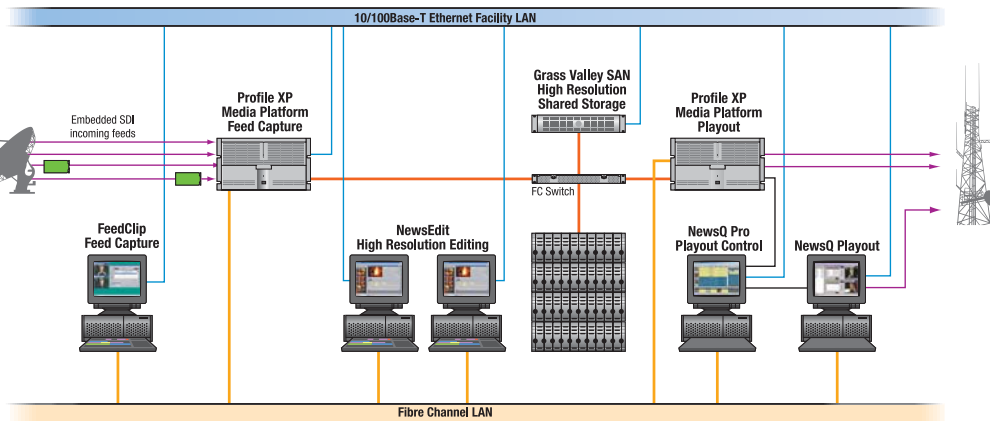
- Local storage on the NewsroomSuite computer
- Open SAN network, a shared storage network consisting of these components:
  - Profile Media Server(s), for encoding and playing out broadcast-quality video
  - RAID arrays provide storage for all media
  - File System Manager (FSM), one or two servers which control access to the RAID arrays and host asset databases
- Network Attached Storage (NAS) network, a shared storage network consisting of these components:
  - NAS Server, to manage the network file systems
  - RAID arrays provide storage for all media
  - Database System Manager (DSM), which hosts the News database and optionally the SmartBin Service

For a detailed discussion of the shared storage network options available with NewsEdit, see the *NewsShare Technical Reference Guide* (part number 071-8371).



# Digital News Production Workgroup Layout

This illustration shows a typical setup for a NewsroomSuite computer within the Digital News Production workgroup.





---

*Chapter 1 Introducing the NewsroomSuite System*

## ***Setting Up the Hardware***

Once you understand the site requirements and cabling guidelines, you can set up your NewsroomSuite computer system and connect the cables.

This chapter discusses:

- Site requirements
- Guidelines for cabling your NewsroomSuite system
- Connecting system cables
- Connecting network cables
- Connecting a Video Tape Recorder
- Connecting audio and video to the Breakout Box
- Connecting an audio mixer



## Site Requirements

This section details site requirements for your NewsroomSuite system.

### Power Requirements

It is highly recommended that you use a surge protector and an uninterruptible power supply (UPS) with your system. There must be a 20 A, 110 to 120 V alternating current, 60 Hz or 10 A, 220 to 224 V alternating current, 50 Hz circuit breaker and an isolated ground.

Storage upgrades may require additional electrical service. Consider the equipment nameplate ratings and consult your Thomson Grass Valley representative.

The NewsroomSuite system is designed to work with a single-phase (three-wire) power cord with a grounded neutral conductor. To reduce the risk of electric shock, always plug the cord into a powered off grounded power outlet.

For best performance, keep all system power connections on the same power feed distribution panel. Do not connect any other equipment to the same outlet that is powering the NewsroomSuite equipment.

This table lists the power requirements for the system components.

Component	Voltage	Frequency	Power
NewsroomSuite Computer	120/240 VAC	50/60	300 Watts
Pro Analog Breakout Box	N/A	N/A	N/A
Pro Digital/Analog Breakout Box	120/240 VAC		1.5 Amps
17" Monitor (optional; spec based on Viewsonic A70)	100/240 VAC	50/60	2 Amps
Mackie 1402VLZ Pro (optional)	120/240 VAC	50/60	25 W
Fostex Speakers (optional)	120 VAC		5 W
Brocade Silkworm 2400 (optional 8 port)	100/240 VAC	50/60	1.5 Amps
Brocade Silkworm 2800 (optional 16 port)	100/240 VAC	50/60	1.5 Amps
Netgear FS516 Ethernet Switch (optional 16 port)	100/240 VAC	50/60	29 W

## **Synchronization Requirements**

You must have a stable video reference source to synchronize the system if you are playing directly to air. The system needs no reference if the output is not required to be genlocked. The Pro Analog and Pro Digital/Analog Breakout Boxes each have Reference In connections.

## **Environmental Requirements**

This table lists the specifications for a standard broadcast environment.

<b>Condition</b>	<b>Range</b>
Operating temperature	50 to 75 degrees Fahrenheit
Storage temperature	0 to 140 degrees Fahrenheit
Relative humidity	20% to 80%
Altitude	0 to 6000 ft. (0 to 1829 m)

## **Networking Requirements**

Your system is designed to work over industry-standard local area networks (LANs) and wide area networks (WANs) using standard TCP/IP networking protocols. Install all possible network cabling before the equipment arrives and make note of the network IP addresses that reside within the network.

### **Fibre Channel**

The NewsroomSuite system transfers files to the playback server through a Fibre Channel switch connection. Typically, fibre-optic cable is run along or inside facilities ductwork using 62.5-micron termination connectors, SC type for the Emulex Fibre Channel card and LC type for the Q-Logic Fibre Channel card. Contact Thomson Grass Valley for sources for custom or off-the-shelf length cables.

### **Ethernet Switch**

The Ethernet switch routes data between all NewsroomSuite systems, the playout server, and newsroom systems. A 100-BaseT Ethernet switch is required to connect network devices within NewsroomSuite production workgroups. A Gigabit Ethernet switch is available and used for the Network Attached Storage product. Status LEDs on the hub show network activity.



## Cabling Guidelines

Creating a floor plan of your facility with user and equipment locations marked will help you determine necessary cable lengths. Follow these guidelines to install your NewsroomSuite system:

- Use all cables delivered with your NewsroomSuite system. All supplied cables are tested and qualified for Thomson Grass Valley broadcast system configurations.
- The monitors should be within 6 feet of the NewsroomSuite computer. You may use VGA cable extensions, though video images degrade with increased length.
- The keyboard and mouse should be within 6 feet of the NewsroomSuite computer. Use keyboard and mouse extensions only if necessary.
- The Breakout Box should be within 6 feet of the NewsroomSuite computer.
- The VTR should be within 15 feet of the NewsroomSuite computer for a standard RS-422 length cable. An extension cable can be added for greater distances.
- A fibre-channel switch should be within 1650 feet (500 meters) from the NewsroomSuite computer when using a standard Multimode cable.

These cables ship with your NewsroomSuite system:

Cable Description	Length	Connects
Standard power cords	Up to 6 ft. (1.8m)	All physical hardware with designated power supply
Keyboard cable	Up to 6 ft. (1.8m) (Quality PS/2 extender cables can be used)	Keyboard to NewsroomSuite computer
Mouse cable	Up to 6 ft. (1.8m) (Quality PS/2 extender cables can be used)	Mouse to NewsroomSuite computer
Digital tether data cable	6 ft. (1.8m)	Digital/Analog Breakout Box to video board on NewsroomSuite computer
Purple ATI Input Adapter	5 ft. (1.8m)	ATI to mini-DIN connection on graphics card on NewsroomSuite computer

---

## Cabling Guidelines

Cable Description	Length	Connects
S-Video cable	6 ft. (1.8m)	S-Video connection on Analog Breakout Box to ATI Input Adapter
ATI Output Adapter Octopus cable	6 inches (approximately)	A/V OUT connection on VGA board on NewsroomSuite computer to a single or dual monitor

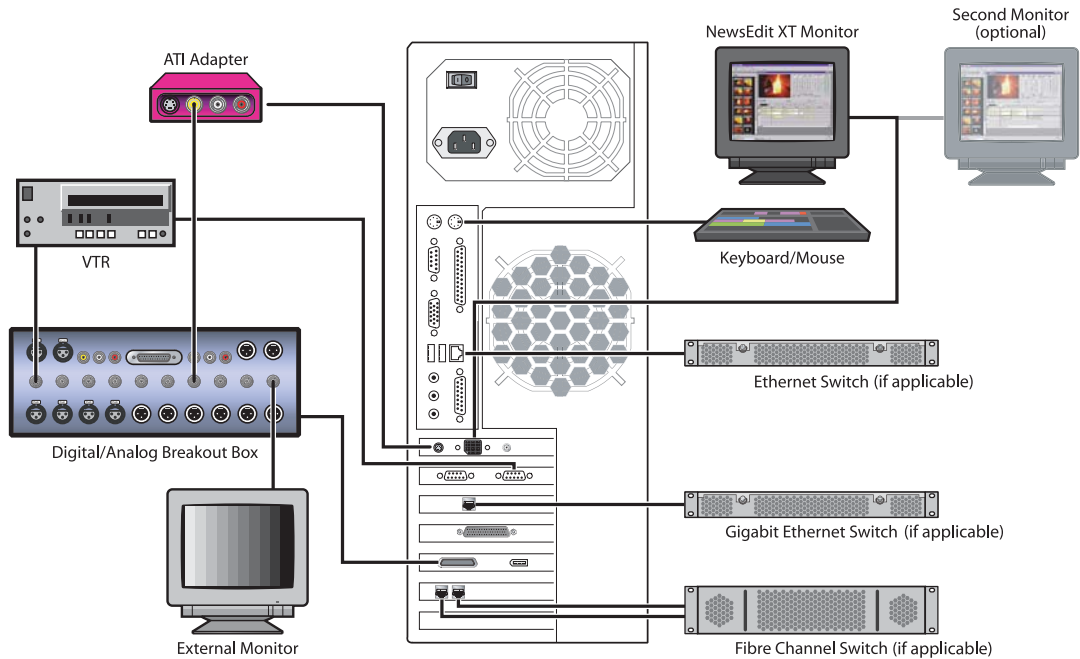
You need to supply these cables for your NewsroomSuite system:

Cable Description	Length	Connects
Fibre optic	62.5-micron, SC or LC Multimode type, up to 1650 ft. (500m)	Fibre channel switch to server fibre port
RJ-45 Cat5 Ethernet	Customer desired	Ethernet hub or switch to NewsroomSuite computer ethernet port
Remote serial	Up to 15 ft. (4.6m) (Quality RS422 extension module can be used)	Remote control from VTR to RS-422 card on NewsroomSuite computer
BNC video	8 ft.	Digital I/O composite or component Y to ATI Input Adapter
BNC video reference	Customer desired	Reference on Breakout Box
BNC video	Customer desired	Customer equipment to Breakout Box
XLR Audio	Customer desired	Customer supplied equipment to Breakout Box



## Connecting System Cables

This illustration shows a typical setup of how each of the components connect to the NewsroomSuite computer. The following sections describe each connection in detail.





## **Connecting the Keyboard and Mouse**

To connect the keyboard and mouse:

1. Plug the keyboard cable into the purple PS/2 port on the back of the NewsroomSuite computer.
2. Plug the mouse cable into the green PS/2 port on the back of the NewsroomSuite computer.

## **Connecting the Computer Monitor**

You can connect one or two computer monitors to your system.

To connect a single monitor:

1. Plug the ATI output adapter cable into the **A/V OUT** port on the back of the NewsroomSuite computer.
2. Plug the **VGA1** connector on the other end of the ATI output adapter cable into the monitor cable (for the primary monitor).
3. If necessary, plug the other end of the monitor cable to the **VIDEO IN** port on the back of the monitor.

Some computer monitors have the cable permanently attached to the back of the monitor.

4. Plug the monitor's power cable into the back of the monitor and into a power strip or wall outlet.

To connect two computer monitors to your system:

- Follow the instructions for the single monitor, but in addition, plug the **VGA2** connector on the ATI output adapter cable into the monitor cable for the second monitor.

## **Connecting the Power Cable**

To connect the power cable:

- Plug the power cable from the back of the NewsroomSuite computer to a power strip or wall outlet.



## Connecting the Breakout Box

You connect the Breakout Box to the NewsroomSuite computer. If you are using two channels with NewsEdit, FeedClip, or NewsQ, you have two Breakout Boxes; each connect to the NewsroomSuite computer the same way. See “Connecting Audio and Video Cables to the Breakout Box” on page 32 for instructions on connecting audio and video cables to the Breakout Box.

### Pro Digital/Analog Breakout Box

To connect the Breakout Box:

1. Plug the mini-SCSI cable from the left most port on the back of the Breakout Box to the mini-SCSI connector on the back of the NewsroomSuite computer.
2. Plug the power cable from the right most port on the back of the Breakout Box into the power supply box, and then plug the cable from the power supply into a power strip or wall outlet.

### Pro Analog Breakout Box

To connect the Breakout Box, plug the cable from the back of the Breakout Box into the mini-SCSI connector on the back of the NewsroomSuite computer.

## Connecting the ATI Input Adapter

The purple ATI Input Adapter lets you see video on the computer monitor through the NewsEdit user interface. You can connect the ATI Input Adapter in two ways. The first way connects the Breakout Box to the adapter directly; the second way connects the Breakout Box to an external monitor and then to the adapter. The adapter then connects to the NewsroomSuite computer.

### Connecting the Breakout Box Directly

1. Plug the cable end of the ATI input adapter into the **VID IN** connector on the back of the NewsroomSuite computer.
2. Plug one end of a BNC video cable into the yellow Video In connector on the ATI input adapter and the other end into the **Y OUT** connector on the Breakout Box.

***NOTE:** If you are using the Pro Analog Breakout Box, plug the BNC video cable into the S-Video connector on the Breakout Box.*

## Using an External Monitor

1. Plug the cable end of the ATI input adapter into the **VID IN** connector on the back of the NewsroomSuite computer.
2. Plug one end of a BNC video cable into the yellow Video In connector on the ATI input adapter and the other end into the **VID OUT** connector on the external monitor.
3. Using another BNC video cable, plug one end into the **VID IN** connector on the external monitor and the other end into the **Y OUT** connector on the Breakout Box.

***NOTE:** If you are using the Pro Analog Breakout Box, plug the BNC video cable into the S-Video connector on the Breakout Box.*

## Connecting Network Cables

Depending on the type of network you have, and the type of storage system you've chosen to use, you have different boards in your NewsroomSuite system.

### Ethernet Connection

If you are using a Network Attached Storage (NAS) system, you are using a Gigabit ethernet connection.

To connect an ethernet switch to the NewsroomSuite computer:

- Plug the end of the RJ45 cable into the Gigabit port on the back of the NewsroomSuite computer and the other end into your ethernet switch.

### Fibre Channel Connection

If you are using a Profile Media Server as part of your NewsroomSuite system, or creating a shared storage system with an Open SAN network, you are using fibre channel connections. You may have a single- or dual-port fibre channel board.

To connect a fibre channel switch to the NewsroomSuite computer:

- Plug the ends of the network cable into the **TX** and **RX** connectors on the back of the NewsroomSuite computer and the other ends into your fibre channel switch.



## Connecting a Video Tape Recorder

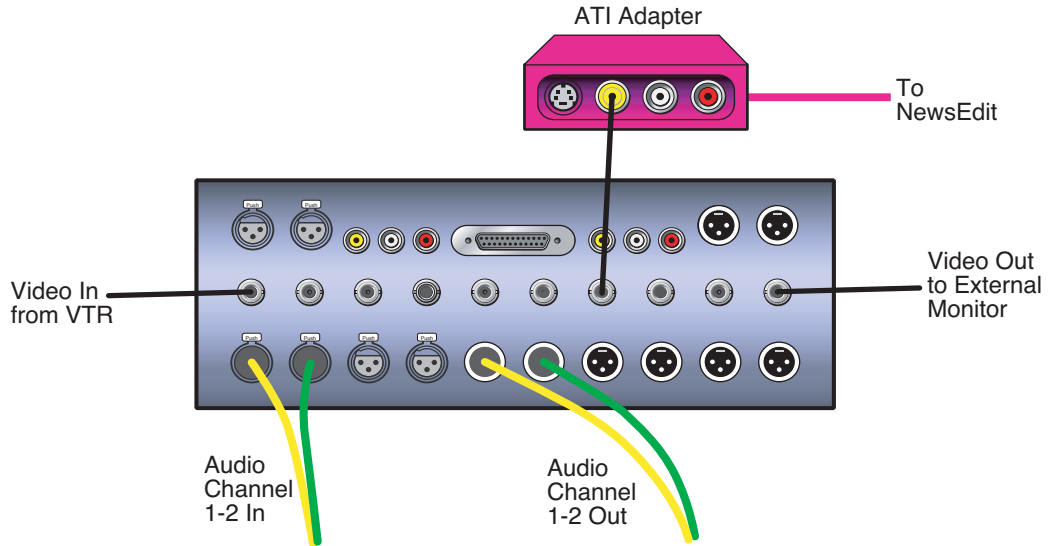
In most situations, you connect a VTR to your system to get footage from tape.

To connect a VTR to your system:

1. Using a remote serial cable, plug one end into the top RS-422 port on the back of the NewsroomSuite computer.
2. Plug the other end of the cable into the back of the VTR.

## Connecting Audio and Video Cables to the Breakout Box

The following illustration and table details how to connect other video and audio cables to your NewsroomSuite computer system.



## *Connecting Audio and Video Cables to the Breakout Box*

Analog Audio without a Mixer	VTR Channel 1 output	Breakout Box balanced IN left channel	XLR-female to XLR-male
	VTR Channel 2 output	Breakout Box balanced IN right channel	XLR-female to XLR-male
	Breakout Box Balanced Left Out	VTR Channel 1 input	XLR-male to XLR-female
	Breakout Box Balanced Right Out	VTR Channel 2 input	XLR-male to XLR-female
	Breakout Box Unbalanced Left Out	Left desktop speaker	RCA-male to XLR-male or 1/4" male
	Breakout Box Unbalanced Right Out	Right desktop speaker	RCA-male to XLR-male or 1/4" male
Digital Audio	VTR AES/EBU Channels 1&2 Output	Breakout Box AES/EBU Channels 1&2 Input	XLR-male to XLR-male
	Breakout Box AES/EBU Channels 1&2 Output	VTR AES/EBU Channels 1&2 Input	XLR-male to XLR-female
	Breakout Box Unbalanced Left Out	Left desktop speaker	RCA-male to XLR-male or 1/4" male
	Breakout Box Unbalanced Right Out	Right desktop speaker	RCA-male to XLR-male or 1/4" male
Video	VTR-SDI Output	Breakout Box SDI Input	Single BNC-BNC
	Breakout Box SDI Output	VTR SDI Input	Single BNC-BNC
	VTR Composite Output	Breakout Box Composite Input	Single BNC-BNC
	Breakout Box Composite Output	VTR Composite Input	Single BNC-BNC
	VTR Component Output	Breakout Box Component Input	Tri BNC-BNC harness
	Breakout Box Component Output	VTR Component Output	Tri BNC-BNC harness



## Connecting an Audio Mixer

You can add an audio mixer to enhance NewsEdit XT's audio capabilities by feeding multiple inputs into the editor. The following table is a suggested configuration on the setup of a mixer and NewsEdit XT, based on the Mackie 1402VLZPro.

<b>Input</b>	<b>From</b>	<b>To</b>	<b>Cable type</b>
Analog Audio with a Mixer	VTR Channel 1 output	Mixer channel 1 line IN	XLR-female to 1/4"-male
	VTR Channel 2 output	Mixer channel 2 line IN	XLR-female to 1/4"-male
	Main mixer out left channel	Breakout Box balanced IN left channel	XLR-female to XLR-male
	Main mixer out right channel	Breakout Box balanced IN right channel	XLR-female to XLR-male
	Breakout Box Balanced Left Out	VTR Channel 1 input	XLR-male to XLR-male
	Breakout Box Balanced Right Out	VTR Channel 2 input	XLR-male to XLR-male
	Breakout Box Unbalanced Left Out	Left desktop speaker	RCA-male to XLR-male or 1/4" male
	Breakout Box Unbalanced Right Out	Right desktop speaker	RCA-male to XLR-male or 1/4" male

## ***Connecting External Controllers to NewsEdit***

There are three external controllers you can use with NewsEdit: the Motorized Fader Controller, the Jog/Shuttle Controller, and the Effects Controller.

This chapter discusses how to:

- Connect each of the external controllers to a NewsEdit workstation
- Assign a COM port to a particular controller
- Verify that the COM ports are configured correctly



## Introducing the External Controllers

An external controller lets you control features of NewsEdit easily and quickly.

Name of Controller	Description	Supported Products
Jog/Shuttle	Lets you control NewsEdit XT or SC externally, making news editing faster. The controller incorporates a jog/shuttle wheel for convenient searching, buttons to minimize keyboard strokes, and a back-lit LCD timecode display for accurate editing.	NewsEdit XT NewsEdit SC
Motorized Fader	Lets you control the audio features of NewsEdit externally, making refining and perfecting the audio mix of your sequences easier. The controller features four touch-sensitive, motorized faders, 16 channel switches, 4 function keys, and bank shift buttons for control of NewsEdit audio functions.	NewsEdit XT NewsEdit LT NewsEdit SC
Effects	Lets you control creating and modifying effects in NewsEdit externally. The controller is a 3-axis joystick mechanism with five rotary encoders and 10 switches for control of NewsEdit effect functions.	NewsEdit XT NewsEdit LT NewsEdit SC



## Connecting an External Controller to the NewsEdit Workstation

You connect the controller to your NewsEdit computer using an RS-422 port for the Jog/Shuttle Controller and a USB port for the Fader or Effects Controller.

The NewsEdit computer comes configured to use COM4 for the Jog/Shuttle Controller.

### Connecting the Jog/Shuttle Controller

1. Plug the controller's 9-pin connector into the bottom RS-422 port on the back of the NewsEdit computer (COM4).
2. Plug the controller's power connector into a DC power adapter connection.
3. Verify that the following information appears on the controller's display when it powers up:

**Grass Valley  
NewsEdit  
Rev 1.04**

4. Turn on your NewsEdit XT or SC computer as usual.

### Connecting the Motorized Fader or the Effects Controller

1. Plug the controller's USB connector into one of the two available USB ports on the back of your NewsEdit XT, LT or SC computer (usually COM5 for the Motorized Fader Controller and COM6 for the Effects Controller).
2. If you are connecting the Motorized Fader Controller, plug the controller's power connector into a DC power adapter connection.

The Effects Controller is powered off the USB cable.

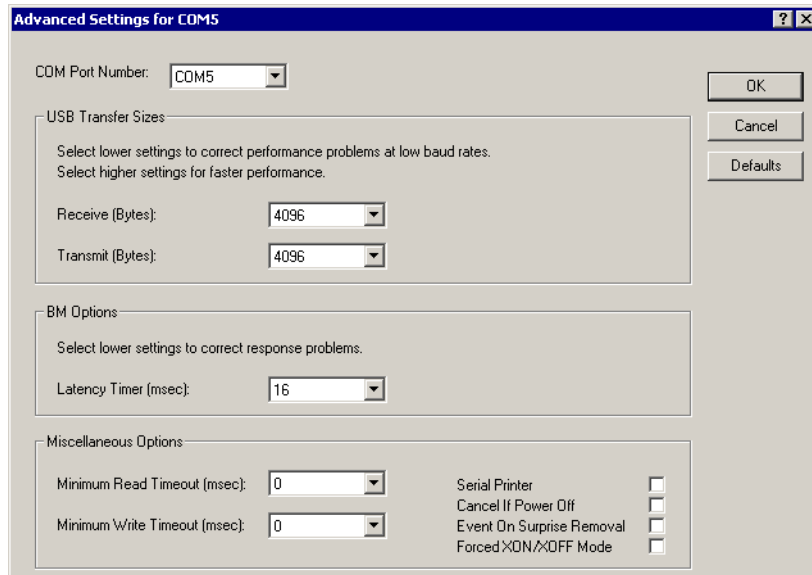
3. Turn on your NewsEdit computer as usual.
4. When the New Hardware Wizard appears, follow the directions on the screen.
5. When asked for the controller's driver, navigate to: **C:\Program Files\Vibrint 3.0\Drivers\JLC USB Drivers.**
6. Finish the new hardware installation.



## Verifying the COM Port

To verify that the COM port is set correctly in the Device Manager:

1. Right-click on My Computer and select **Properties**.
2. Click the Hardware tab on the System Properties window and click **Device Manager**.
3. Click the **+** symbol next to the Ports item.
4. Click on **JLCooper USB to Serial (COM#)** and select **Properties**.
5. Click the Port Settings tab on the Properties tab and click **Advanced**.



6. In the COM Port Number field, select the correct COM port from the pull-down list.
7. Click **OK** to close the Advanced window.
8. Click **OK** again to close the Properties window.

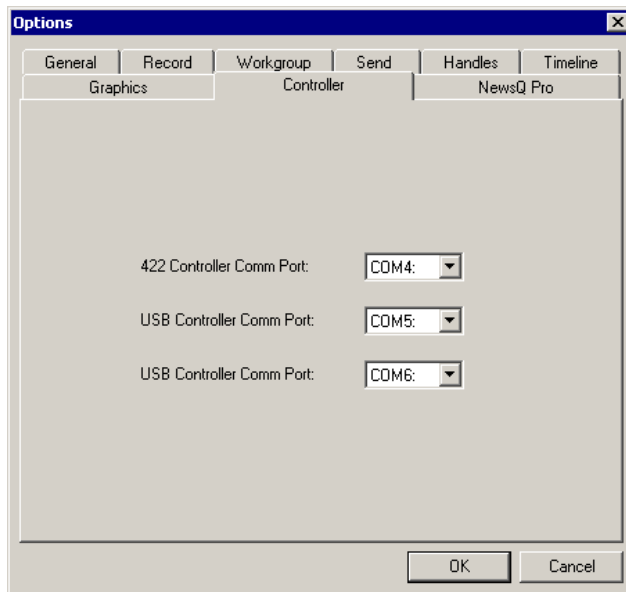
## Assigning a COM Port for the Controller

To use any of the controllers, you need to assign a specific COM port in NewsEdit for the controller. NewsEdit has pre-configured COM ports as follows:

COM Port	Type of Port	Configured Device
1	GPIO	NewsQ GPIO
2		
3	RS-422	Video Tape Recorder (VTR)
4	RS-422	Jog/Shuttle Controller
5	USB	Motorized Fader Controller
6	USB	Effects Controller

To assign a COM port:

1. In NewsEdit XT/LT/SC, choose **Tools | Options | Controller**.





---

Chapter 3 *Connecting External Controllers to NewsEdit*

2. For the Jog/Shuttle Controller, select the correct COM port from the **422 Controller Comm Port** drop-down list; for the other controllers, select the correct COM port from the **USB Controller Comm Port** drop-down list.

The COM port needs to match the number of the USB port where you connected the controller.

3. Click **OK**.

You can now use the controller to control features on NewsEdit.

## ***Turning On the NewsroomSuite Computer***

Once your computer is cabled, you are ready to turn it on and launch the NewsroomSuite applications.

This chapter discusses:

- How to power up the system
- The System Self Test
- How to launch NewsroomSuite applications



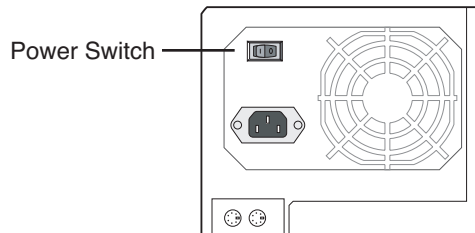
## Powering Up the System

You power up the NewsroomSuite computer differently depending on your type of system.

### Standalone System

The standalone NewsroomSuite computer has two power switches—one on the back of the computer and one on the front. To power up the system:

1. Turn the power switch on the back of the computer to on.

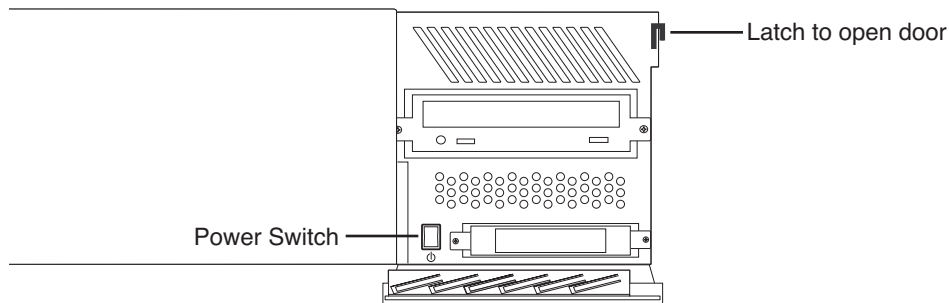


2. Press the power button on the front of the computer to turn it on.

You can leave the power switch on the back of the computer on and control the power to the computer using the button on the front of the NewsroomSuite system.

### Rackmount System

The rackmount NewsroomSuite computer only has one power switch. To power up the system:



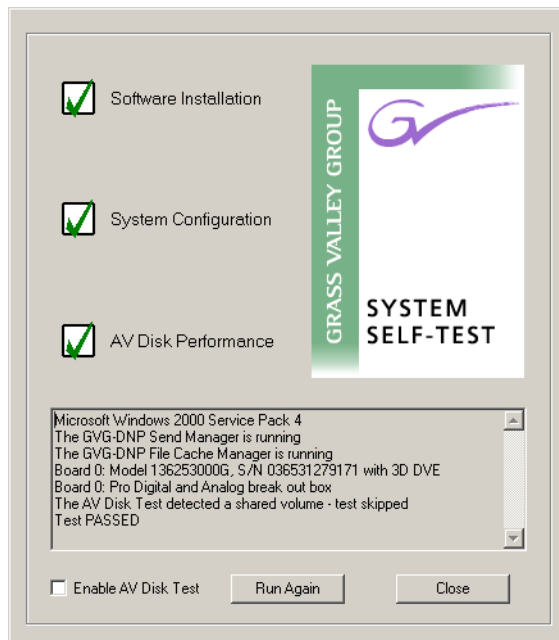
1. On the front of the computer, flip down the right side door.
2. Press the power switch to turn it on.
3. Close the computer door.

## Understanding the System Self Test

The NewsroomSuite computer runs a System Self Test automatically each time that you boot the computer. The System Self Test looks at three areas:

- **Software Installation**—Checks for the correct version of Profile software, Direct X driver, Targa drivers (for NewsEdit XT), operating system and video drivers (NewsEdit LT and SC), and export and cache service. In an Open SAN system, this test also checks the CVFS version.
- **System Configuration**—In NewsEdit XT, checks for the correct version of Targa board and Breakout Box firmware; in NewsEdit LT and SC, checks for the correct version of the audio renderer and the VMR.
- **AV Disk Performance**—Tests the media drives input and output performance.

As the System Self Test runs, you see the results in the System Self Test window:








---

## Chapter 4 *Turning On the NewsroomSuite Computer*

Each area tested can have one of three results:

This symbol...	Means...	Do this...
	The test passed.	Use your NewsroomSuite computer as usual.
	The test is currently running.	Wait for the test to complete.
	The test failed.	See “Troubleshooting the System Self Test” on page 45 for instructions.

If you are using shared storage, the AV Disk Performance Test is skipped and you see this message: *The AV Disk Test detected a shared volume - test skipped.*

### Running the System Self Test Manually

You can run the System Self Test anytime you want to test the system. Before running the System Self Test, make sure that the NewsEdit program is not running.

To run the System Self Test:

- Go to **Program | Startup | System Self Test.**

The Self Test runs.



## Troubleshooting the System Self Test

If any of the three tests fail, use this table to determine the cause and fix the problem.

If you see this message...	It means...
<p><b>Hardware Query Failed</b></p>	<p>The system can't find the Targa card.</p> <p>Reseat the Targa card in its slot and run the System Self Test again. If the test fails again with the same message, your Targa board may need replacing. Contact your Customer Service Representative.</p>
<p><b>Codi driver ___ is not supported.</b>  <b>Video card driver ___ is not supported.</b>  <b>CVFS client file system ___ is not supported.</b>  <b>DirectX driver version ___ is not supported.</b>  <b>Emulex LAN driver ___ is not approved.</b>  <b>Emulex SCSI driver ___ is not approved.</b>  <b>QLogic LAN driver ___ is not approved.</b>  <b>QLogic SCSI driver ___ is not approved.</b></p>	<p>You have an incorrect version of one of the drivers installed on your system.</p> <ol style="list-style-type: none"> <li>1. Insert the NewsroomSuite CD into the CD-ROM drive on the computer.</li> <li>2. Navigate to the Drivers directory.</li> <li>3. Install the latest driver.</li> </ol> <p>Contact your Customer Service Representative for further details.</p>
<p><b>No break out box detected.</b>  <b>Unsupported break out box detected.</b></p>	<ol style="list-style-type: none"> <li>1. Check all cable connections from the Breakout Box and to the NewsroomSuite computer.</li> <li>2. Check that the power cable is connected correctly to the Breakout Box.</li> </ol>
<p><b>Bob version ___ is not approved.</b></p>	<p>You have an outdated version of the break out box firmware.</p> <ol style="list-style-type: none"> <li>1. Go to <b>C:\Program Files\Vibrint 3.0\Utilities</b>.</li> <li>2. Double-click <b>ProDABobUpdate.exe</b>.</li> </ol> <p>The update runs and updates your break out box firmware.</p>
<p><b>Profile Errors:</b>  <b>Installed Profile software is version ____.</b>  <b>Profile software not found.</b>  <b>The approved version of the Profile software is x.x.</b></p>	<p>The Profile software is either not installed on your machine or is not the current version.</p> <ol style="list-style-type: none"> <li>1. Insert the NewsroomSuite CD into the CD-ROM drive on the computer.</li> <li>2. Navigate to the <b>Software Installs/Profile version/XP</b> directory.</li> <li>3. Double-click on the file <b>Setup.exe</b>.</li> <li>4. Follow the instructions for "Installing Profile Software" on page 48.</li> </ol>



## Chapter 4 Turning On the NewsroomSuite Computer

If you see this message...	It means...
<b>The XX database server is not compatible.</b>	<p>The shared database is not compatible with your version of NewsroomSuite software.</p> <p>On your FSM or DSM, run the <b>SetupNewsShareServer</b> utility, which can be found on the NewsroomSuite CD-ROM.</p> <p>For more information, see the <i>NewsShare Technical Reference Guide</i>.</p>
<b>No boards found or driver not running. No boards found.</b>	<p>The system can locate the Targa board but the CODI software isn't completely installed.</p> <ol style="list-style-type: none"><li>1. Uninstall the NewsroomSuite software.</li><li>2. Uninstall the CODI software.</li><li>3. Reinstall the NewsroomSuite software.</li></ol> <p>The CODI software installs with the NewsroomSuite software.</p>
<b>ERROR during AV Disk Test: remote volume detected.</b>	<p>You are using shared storage. The AV Disk Performance test checks the local media drives, so the test doesn't run if shared storage is used.</p>
<b>ERROR during AV Disk Test:</b>	<p>Your local disk drive is too slow; it needs to be &lt;12 Mb read/write.</p>

## Launching the NewsroomSuite Applications



To launch the application from your local hard drive:

- Double-click the application icon on the computer desktop or open the program by clicking **Start | Programs | Vibrint | <name of program>**.

## ***Installing Software***

The NewsroomSuite software should already be installed on your computer when your system arrives. However, if you ever need to install the Profile or NewsroomSuite software, this chapter provides instructions.

This chapter discusses how to:

- Install Profile software
- Install the NewsroomSuite software
- Obtain a software license number



## Installing Profile Software

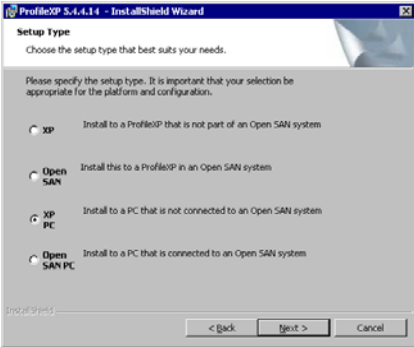
The Profile software should already be installed on your computer when your system arrives. However, if you ever need to install the Profile software, follow these instructions.

***NOTE:** If you have a version of Profile software installed on your machine, you need to uninstall it before installing the latest version of Profile software.*

To install the Profile software:

1. Insert the NewsroomSuite CD into your CD drive.
2. Navigate to **Software Installs | Profile version | XP**.
3. Double-click on **Setup.exe**.
4. Install the software following these instructions:

On this screen...	Do this...
Welcome	Click <b>Next</b> .
License Agreement	Read and accept, then click <b>Next</b> .

On this screen...	Do this...
Setup Type	 <p>Select your type of setup and click <b>Next</b>:</p> <ul style="list-style-type: none"> <li>• <b>XP PC</b>—Select this type if your system is part of a local network and using local storage, or is part of a Network Attached Storage (NAS) system and using shared storage.</li> <li>• <b>Open SAN PC</b>—Select this type if your system is part of an Open SAN system using shared storage.</li> </ul> <p>&gt;&gt;&gt;&gt; <b>WARNING: The other setup types are for installing Profile software on a Profile Video Server and should never be used on a NewsroomSuite computer.</b></p>
Ready to Install	Click <b>Install</b> .
Installation Complete	Click <b>Finish</b> . The computer prompts you to reboot so the new settings take effect.



## Installing the NewsroomSuite Software

The NewsroomSuite software should already be installed on your computer when your system arrives. If you ever need to install the NewsroomSuite software, follow these instructions.

***NOTE:** If you have a version of NewsroomSuite software installed on your machine, you need to uninstall it before installing the latest version of NewsroomSuite software.*

To install the NewsroomSuite software:

1. Insert the NewsroomSuite CD into your CD drive and navigate to **Software Installs | DNP Application**.

If you are installing NewsEdit LT or SC, navigate to the **Software Installs** directory.

2. Double-click on **SetupNewsRoomSuite.exe** (or **SetupNewsEditLT.exe**, or **SetupNewsEditSC.exe**).
3. Follow the directions below for using Local or Shared Storage. If your system is part of an Open SAN system or connected to Network Attached Storage (NAS), use the instructions for Shared Storage; otherwise, use the instructions for Local Storage.

## Local Storage System

Follow these instructions if you are installing the NewsroomSuite software on a system using local storage:

On this screen...	Do this...
Welcome	Click <b>Next</b> .
Select Destination Directory	Leave set at the default location and click <b>Next</b> .
Select Shared or Local Installation	Select <b>Local</b> and click <b>Next</b> .
Specify Directory for Video and Audio Files	Leave set at the default location and click <b>Next</b> .
Ready to Install	Click <b>Next</b> to begin the installation.
Installation Complete	Click <b>OK</b> to close the installation program. The computer prompts you to reboot so the new settings take effect.

Once the computer reboots, NewsEdit sets up a News database to store your news files and installs necessary drivers. A System Self Test then runs, testing your software configuration and software versions.



## Shared Storage System

Follow these instructions if you are installing the NewsroomSuite software on a system using shared storage, that is part of an Open SAN system or connected to Network Attached Storage (NAS):

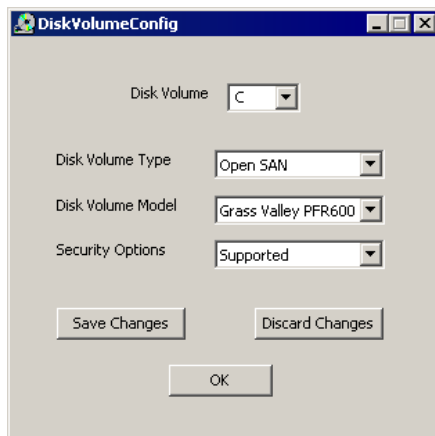
On this screen...	Do this...
Welcome	Click <b>Next</b> .
Select Destination Directory	Leave set at the default location and click <b>Next</b> .
Select Shared or Local Installation	<ol style="list-style-type: none"><li>1. Select your media server type: <b>Open SAN</b> or <b>NAS</b>.</li><li>2. If you want to use security on your shared database, check <b>Domain Security</b>.</li><li>3. Click <b>Next</b>.</li></ol>
Specify the Servers for the Shared Database	Enter the names of the primary and secondary (if applicable) File System Managers (or Database System Manager for the NAS system) and click <b>Next</b> .
Specify Directory for Shared Video and Audio Files	Leave set at the default location and click <b>Next</b> .
Specify Directory for AV Cache Files	Leave set at the default location and click <b>Next</b> .
Specify Location for Shared Thumbnails	Leave set at the default location and click <b>Next</b> .
Specify Directory for Local Video and Audio Files	Leave set at the default location and click <b>Next</b> .
Specify the Shared Drives for use with NAS	<i>Network Attached Storage only:</i> Enter the drive letter(s) of the drives you are using on the shared system. Separate multiple drives with commas, such as V,W,X.
Ready to Install	Click <b>Next</b> to begin the installation.
<i>Note: If the DiskVolumeConfig window appears, see “Configuring the Disk Volume” on page 53 for instructions.</i>	
Installation Complete	Click <b>OK</b> to close the installation program. The computer prompts you to reboot so the new settings take effect.

Once the computer reboots, NewsEdit sets up a News database to store your news files and installs necessary drivers. A System Self Test then runs, testing your software configuration and software versions. See the *NewsShare Technical Reference Guide* (part number 071-8371) for details on the shared news database.



## Configuring the Disk Volume

When you install the NewsroomSuite 5.1 software for the first time, the Disk Volume Configuration window appears during installation. You need to configure the shared volume for your type of network and equipment. The Disk Volume Configuration only needs to be done once on each shared volume, on the first NewsroomSuite system installing the 5.1 version of software.



To configure the disk volume:

1. Select the drive letter of the disk volume to configure.
2. Select your configuration as follows:

Setting	Options	Description
Disk Volume Type	<b>Unknown</b> <b>Local Disk</b> <b>Open SAN</b> <b>NAS</b>	Select your type of shared storage.
Disk Volume Model	<b>Unknown</b> <b>GV PFR500, PFR600, PFR700, PFR800</b> <b>Ciprico 1700, 2400, 3600</b> <b>IBM NAS</b>	<i>Open SAN:</i> Choose <b>GV PFR500, PFR600, PFR700, or PFR800</b> ; if you don't know, select <b>PFR600</b> .  <i>NAS:</i> Choose <b>Ciprico 1700, 2400, 3600, or IBM NAS</b> .
Security Options	<b>Supported</b> <b>Not Supported</b>	Select <b>Supported</b> if your system is configured to use Windows Security; if not, select <b>Not Supported</b> .

3. Click **OK** to save changes and return to the software installer.



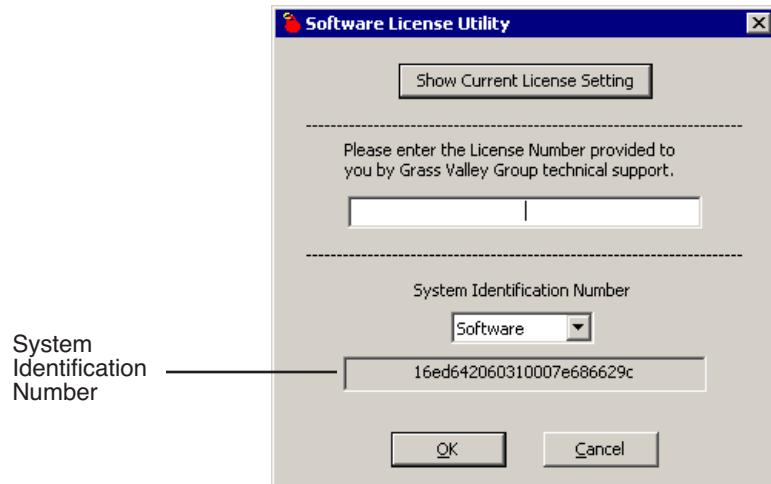
## Obtaining a Software License Number

Once you've installed the NewsroomSuite software, you need to get a License Number from Grass Valley.

To obtain a License Number:

1. Open Windows Explorer and browse to **C: | Program Files | Vibrint 5.1 | Utilities**.
2. Double-click the file **License.exe** to open it.

The Software License Utility opens:



Your System Identification Number appears in the bottom field of the window.

3. Call Grass Valley Product Support at 1-800-547-8949 and provide the customer service representative with your System Identification Number, as well as the software version and the original order number for the system.
4. Enter the License Number provided to you by Grass Valley Product Support and click **OK**.

## ***Configuring Your System***

Before you can use your NewsEdit, FeedClip, or NewsQ system, you need to configure some basic settings.

This chapter discusses how to:

- Modify the host table file
- Set up media files for sharing
- Set up the NewsEdit Bin



## Setting Up the Host Table

The host table is a file that resides on the NewsroomSuite computer. This file resolves names of NewsroomSuite computers and Profile servers with their IP addresses. NewsEdit uses this file to make sure that clips sent between NewsEdit workstations or to Profile servers are sent using TCP/IP.

A sample hosts file looks like this:

```
# Copyright (c) 1993-1999 Microsoft Corp.
#
# This is a sample HOSTS file used by Microsoft TCP/IP for Windows.
#
# This file contains the mappings of IP addresses to host names. Each
# entry should be kept on an individual line. The IP address should
# be placed in the first column followed by the corresponding host name.
# The IP address and the host name should be separated by at least one
# space.
#
# Additionally, comments (such as these) may be inserted on individual
# lines or following the machine name denoted by a '#' symbol.
#
# For example:
#
#       102.54.94.97       rhino.acme.com           # source server
#       38.25.63.10      x.acme.com             # x client host

150.234.187.36  VMAN2_MAN_Broker_fc0
10.16.56.179    GV004739_fc0
150.234.187.21  PVS100000_fc0
150.234.187.22  VMAN2_PVS1000_fc0
150.234.187.23  vman2_pvs1000_fc0
150.234.187.31  VMAN_DEMO1_FC0
150.234.187.32  DEMONEWSEEDIT2_FC0
150.234.187.33  VMAN_DEMO3_FC0
150.234.187.34  VMAN_DEMO4_FC0
150.234.187.35  GV006906_fc0
150.234.187.36  VMAN2_GV011265_FC0
150.234.187.37  VMAN_PRO6_FC0
150.234.187.38  VMAN2_DEMO5
150.234.187.42  vman2_xre1650_fc0
150.234.187.43  vman_NE6_fc0
150.234.187.34  VMAN2_DEMO4_fc0
150.234.187.110 PDR200_2_fc0
10.16.56.174    nbclient
```

On each NewsroomSuite system, set up the hosts files:

1. Open the following file using Notepad, or some other text editor.  
C:\WINNT\System 32\Drivers\etc\hosts
2. Enter text in a single line for each NewsroomSuite computer and Profile server on your network, as follows:

Type the IP address, then use the TAB key or Space bar to insert a few spaces. Then type the machine name, such as NewsEdit1 followed by the characters \_XXX to specify network type, as indicated:

Characters	Network Type
FC0	Fibre Channel
HE0	Gigabit Ethernet
LE0	Ethernet

Be sure to use the zero character, not the letter ‘o’.

3. Save the file and exit the text editor.
4. Copy the new hosts file onto all the other NewsEdit machines so you don’t have to edit each hosts file separately.

## Setting Up Media Files for Sharing

Before you can transfer media files to another NewsEdit workstation, you need to set up your computer for sharing. Your system may already be set up for sharing.

To share files:

1. In Windows Explorer, open the drive where your media files will be stored, usually drive D:.
2. Right click on the VibrintAVFiles folder and choose **Sharing**.
3. Choose the **Shared As** option button and leave the default share name **VibrintAVFiles**.
4. Click **OK**.

The folder you shared appears with the standard Windows sharing icon.



VibrintAVFiles



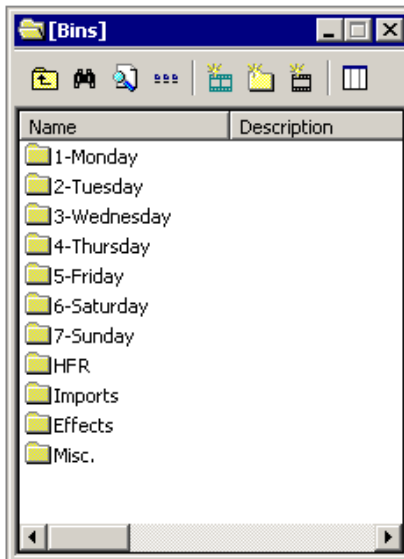
## Setting Up the NewsEdit Bin

The Bin window is empty when you open NewsEdit for the first time. Before you can begin using NewsEdit, you need to create bins to store your work. You can create and organize your bins to suit your work style. For instance, you could create a bin for each day of the week and within those set up a bin for each individual story or for each editor.

## Organizing Your Bins

There are several ways to organize your bins, and the organization you choose depends mostly on your job function as well as your organizational style.

A typical setup for a newsroom might be:



Bins **1-Monday through 7-Sunday** are used for everyday stories.

Bin **HFR** (Hold For Release) is used when you are editing a story on one day but airing it on another.

Bin **Imports** is set up as a single location where other NewsEdit workstations can send clips over the network to you.

Bin **Effects** holds saved video effects.

Bin **Misc.** is a folder to hold any clips to be saved, such as Whiteflash, Black, Color Bars and Tone, Reporter Outcues, repeated effects, etc.

It is also important that, within each day of the week, you create another bin with the title of the specific project you are working on. This helps to keep the bins organized, especially if you have more than one editor working on the same NewsEdit system.

NewsEdit automatically monitors your bins and refreshes the display if anyone places a file in one of your bins. For instance, as a breaking story develops, station staff can place the latest footage in a given directory. It then appears in your Bin where you can use it in your sequence.

To refresh your Bin manually, press **F5** or select **View | Refresh**.

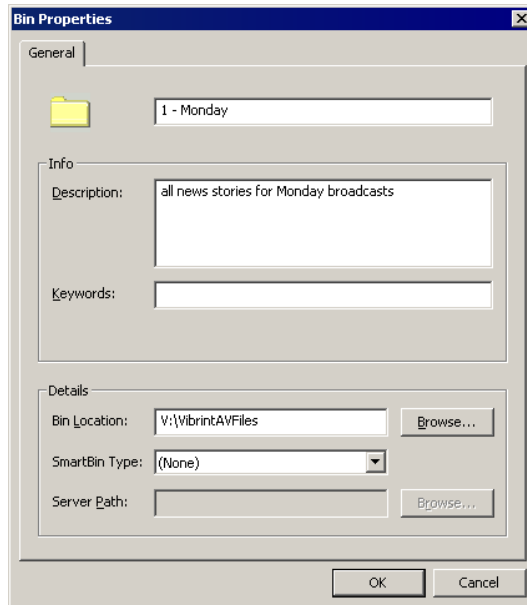
## Creating a New Bin

To create a new bin:



1. In NewsEdit, click the **New Bin** button on the Bin toolbar.

The Bin Properties window appears:



2. Enter the bin Name.
3. Enter a bin Description.
4. Enter bin Keywords if desired.  
You can use keywords to search for a specific bin.
5. Click **Browse** and select a location for the Bin, if different from the default
6. Click **OK**.

If you want to create a SmartBin, see the next section.



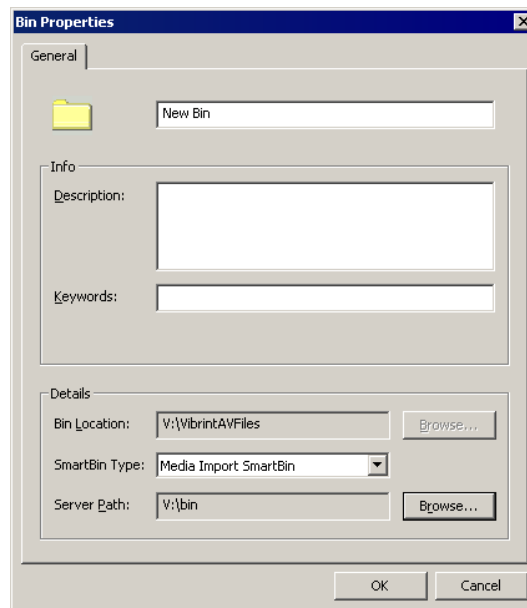
## Setting Up a SmartBin

If you are using NewsEdit in shared mode, you can have clips from a Media Server appear in one of your bins automatically. This type of Bin is called a SmartBin. NewsEdit monitors the server folder you specify and updates the SmartBin automatically when new clips or updated feeds appear. You don't need to go into the server directory and copy the media into your NewsEdit bin in order to use it for playout.

To create a SmartBin:



1. Click the **New Bin** button on the Bin toolbar.



2. Select the SmartBin Type from the drop-down list:

Video Server SmartBin	Allows clips from a Media Server to update automatically in a NewsEdit Bin.
Media Import SmartBin	Allows QuickTime DV25 .mov and DV50 .mov files to import automatically into a NewsEdit Bin.

3. Follow the directions below for the type of SmartBin you are creating.

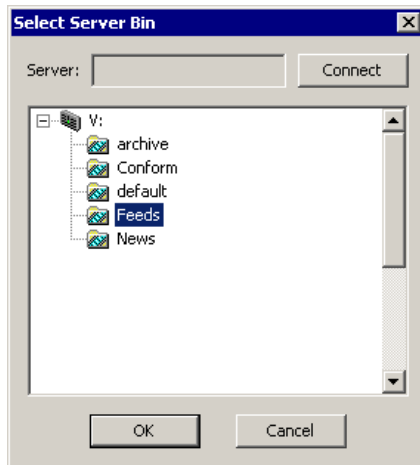


## Creating a Video Server SmartBin

To create a Video Server SmartBin:

1. Click **Browse** to the right of the Server Path field.

The Select Server Bin window appears:



2. If you are using a Network Attached Storage server, enter the name of the server and hit **Connect**; if you are using a Profile of M-Series iVDR server, the Server field is grayed out.

***NOTE:** You only need to enter the name of the server the first time you connect; the server connects automatically once you've set it up.*

3. Select the bin to monitor and click **OK**.

The Server Path fills in with the selected Bin and the Enable SmartBin checkbox gets checked.

4. Click **OK** to create the SmartBin.

NewsEdit now monitors the Media Server folder and adds new media to this bin automatically.



## Creating a Media Import SmartBin

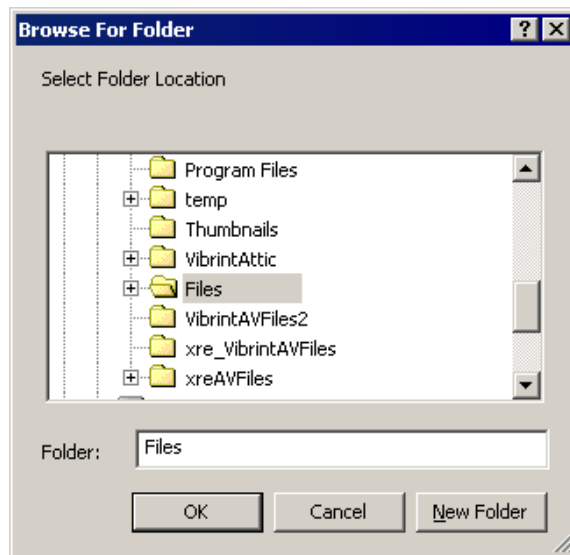
Media Import SmartBins allow you to automatically import QuickTime DV25 and DV50 .mov files into NewsEdit. This allows you to use Apple's Final Cut Pro video editing application, within a NAS environment, to create news footage and then import it into NewsEdit.

Once set up, whenever you export a file into the source folder, it is automatically imported into the NewsEdit Bin. You can then use it in a sequence.

To create a Media Import SmartBin:

1. Click **Browse** to the right of the Server Path field.

The Browse For Folder window appears:



2. Select the folder to monitor and click **OK**.

The Server Path fills in with the folder location.

3. Click **OK** to create the SmartBin.

NewsEdit now monitors the Media Import folder and imports new media to this bin automatically.

## ***Configuring NewsEdit Options***

Before you can successfully use NewsEdit, you need to configure it for the particular equipment in your newsroom.

This chapter discusses how to:

- Add video sources to NewsEdit
- Set options for your newsroom



## Default Configuration Settings

Your NewsEdit software sets most configuration options to a default value, as listed below:

Option	Configuration Item	Default Value
Add Source/General	Source Name	<<blank>>
	Description	<<blank>>
	Source Type	Video Source
.../Connections	Video Input	Composite
	Audio Input	Balanced Analog
	Deck Protocol	No remote deck controls
	Comm Port	<<grayed out>>
.../Record Channels	Video	✓
	Channel 1 Audio	A1
	Channel 2 Audio	A2
	Channel 3 Audio	A3
	Channel 4 Audio	A4
.../Preroll	Get Preroll From Deck	✓
	Preroll	3 seconds
	Aux Preroll	3 seconds
.../Record Handles	In Handles	1 second
	Out Handles	1 second

## *Default Configuration Settings*

<b>Option</b>	<b>Configuration Item</b>	<b>Default Value</b>	
Tools/Options/General	Video Format	NTSC	
	Has Setup	✓	
	Database Connection Mode	Local	Dependent on software installation choice
		Shared	
	Default Bins Location	V:\VibrintAVFiles	
	NTSC Timecode	SMPTE - Drop Frame	
	Prompt Before Deleting Items	✓	
	Reserve COM1 and COM2 for GPIO	off	
Test for Invalid Video Server Characters	off		
.../Record	Compression Type	NewsEdit XT: MPEG2 NewsEdit LT/SC: DV25	
	Bit Rate	NewsEdit XT: 16 mbits NewsEdit LT/SC: 25 mbits	
	Chroma Format	NewsEdit XT: 4:2:2 NewsEdit LT/SC: 4:1:1	
	Video Aspect	4:3	
	Video Resolution	720x480	
	Mix MPEG & IMX Compression Types	<<off>>	
	Use Tape ID	<<off>>	
.../Output (NewsEdit XT only)	Video Connections	Composite	
	Audio Connections	Balanced Analog	
	Video Output to VGA	Composite	
.../Workgroup	Share Name	VibrintAVFiles	
.../Send		<<None set up>>	



---

## Chapter 7 *Configuring NewsEdit Options*

Option	Configuration Item	Default Value	
.../Handles	Handle Type	Import	1 second
		Export	1 second
		Trimmer	10 seconds
		Consolidation	10 seconds
		Render	1 second
.../Timeline	Audio Input	A1 to A8	1+2
	Undo/Redo Limit		32
	Default Play Speed		200%
	Review Edit Duration		3 seconds
	Output Channels		2 or 4 Based on Breakout Box
.../Graphics	Initial Duration		5 seconds
	Fade In		10 frames
	Fade Out		10 frames
	Advanced Mode Enabled		<<Based on licensing>>
	Templates Folder		C:/LyricDemo
.../Controller	422 Controller Comm Port		None
	USB Controller Comm Port (2)		None

---

*Default Configuration Settings*

<b>Option</b>	<b>Configuration Item</b>		<b>Default Value</b>
.../NewsQ Pro	Primary Database	Server	localhost
		Ports	2000/2001
	Backup Database	Server	<<blank>>
		Ports	2002/2003
	Thumbnails	Server	localhost
		Path	C:\
	Categories		All
	Background Row Color		<<as is>>
	Text Row Color		<<as is>>



## Adding Video Sources to NewsEdit

Before using footage from a particular source, you need to add the source to the NewsEdit source list. NewsEdit pre-installs two sources for you — a video source and a clip source:

- The video source, usually a tape deck, allows you to record footage directly into the Timeline or Bin.
- The clip source allows you to edit a clip as a Timeline source directly in the Bin, which is useful for large clips so you don't have to go back and forth from a tape deck. You only need one clip source; you don't have to create a new clip source for each clip you want to use.

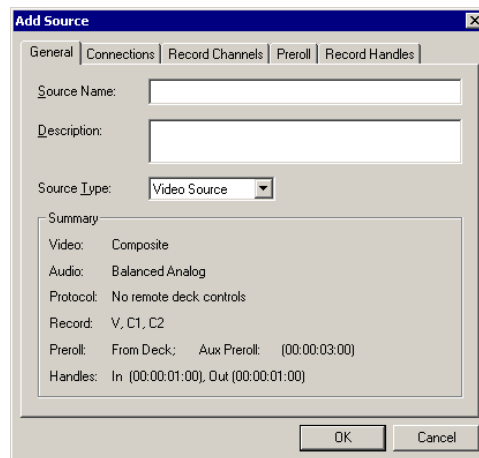
To add other sources to NewsEdit:

1. Choose **View | Sources**.

The Sources window appears, listing the currently configured sources.

2. Click **Add**.

The Add Source window appears:



3. Go through each Add Source tab to configure the new source.

The following sections describe each tab in the Add Source window.

4. Click **OK** when you are done setting up the new source.



## Setting General Source Options

Setting	Options	Description
Source Name		Enter a name for the source, such as Tape Deck.
Description		Enter a description for the source.
Source Type	<b>Video Source</b>	Select <b>Video Source</b> for all incoming sources, including audio sources.
	<b>Clip Source</b>	Select <b>Clip Source</b> to use an existing clip in the bin as a source.
	<b>Microphone</b>	Select <b>Microphone</b> for any microphone sources.

## Setting Connections

Setting	Options	Description
Video Input	<b>Composite S-Video Component Serial D1 IEEE 1394</b>	Select the Video Input option that corresponds to the source's connection to NewsEdit.  The S-Video interface requires the Analog Breakout Box; the Serial Digital interface ( <b>SDI</b> ) requires the Pro Digital/Analog Breakout Box.
Audio Input	<b>Balanced Analog Unbalanced Analog AES/EBU SDI/Embedded TDIFF IEEE 1394</b>	Select the Audio Input option that corresponds to the source's connection to NewsEdit.  The <b>AES/EBU</b> and <b>SDI/Embedded</b> options require the Pro Digital/Analog Breakout Box.
Deck Protocol	<b>No remote deck controls Sony 422 Protocol Sony DNW-A100 DV 1394</b>	Select the Deck Protocol that corresponds to the type of tape deck control you are using with NewsEdit.  If you are adding a clip source, video router, or a non-video source, select <b>No remote deck controls</b> .
Comm Port	<b>None COM1 - COM10</b>	Select the Comm Port you are using to connect the source to NewsEdit.
Input Latency		For NewsEdit LT/SC only: Enter a duration to add an input latency when using a 1394 converter.
Number Loop Tones		Enter a duration to set how many seconds exist between loop record takes; each second a tone plays through the system speakers.



## Setting Record Channels

Setting	Options	Description
Video		Check <b>Video</b> if you want to record video with this source.
Channel 1 Audio	<b>A1 to A8</b>	Check each audio channel that should record audio from this source and select the default audio track (A1–A8) on the Timeline to which you want the channel routed.
Channel 2 Audio	<b>A1 to A8</b>	
Channel 3 Audio	<b>A1 to A8</b>	
Channel 4 Audio	<b>A1 to A8</b>	

## Setting Preroll

Setting	Description
Get Preroll From Deck	Check <b>Get Preroll From Deck</b> to use the preroll settings from your tape deck instead those configured in NewsEdit XT.
Preroll	Enter the number of seconds of preroll to use when recording from this source. This setting overrides the source's Preroll setting unless you check <b>Get Preroll From Deck</b> .
Aux Preroll	Enter the number of seconds of auxiliary preroll you want to use when using an auxiliary input or a non-remote source.

## Setting Record Handles

Setting	Description
In Handles	Enter the number of seconds for the In and Out Handle length.  Handles provide the extra frames necessary to trim or add transition effects at the head or tail of a clip. When you Mark In and Mark Out, NewsEdit XT begins recording the specified number of seconds before your Mark In and after your Mark Out. Only the material between your marks is edited to the Timeline.
Out Handles	

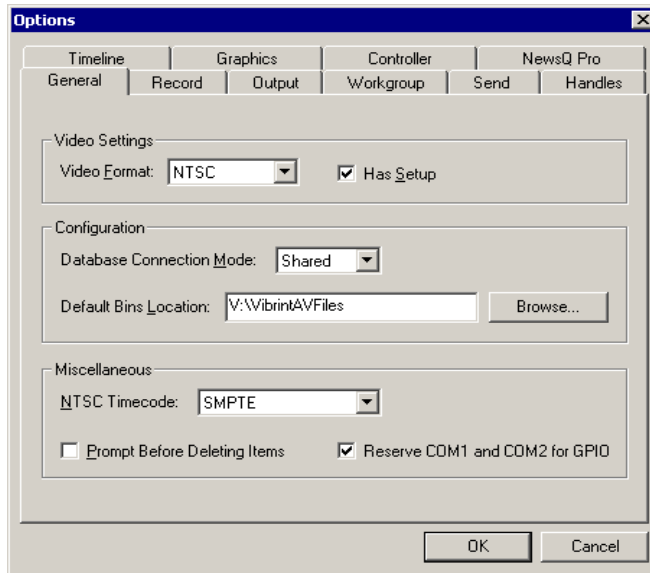
## Setting Options for Your Newsroom

You need to configure NewsEdit for your particular newsroom equipment.

To configure your NewsEdit system:

1. Choose **Tools | Options**.

The Options window appears:



2. Go through each Options tab to configure NewsEdit.

The following sections describe each tab in the Options window.

3. Click **OK** when you are done configuring your system.



## Setting General Options

Setting	Options	Description
Video Format	<b>NTSC</b> <b>PAL</b>	Select the Video Format you are using.  NTSC has a frame rate of 29.97 frames/second and is used primarily in the Americas and Japan. PAL has a frame rate of 25 frames/second and is used in Europe, most of Asia, and Australia.
Has Setup	<b>On</b> <b>Off</b>	Check Has Setup if the analog composite signal carries setup information.
Database Connection Mode	<b>Local</b> <b>Shared</b>	Select <b>Local</b> if you are using local disk storage and a local NewsEdit database. You have access to files on your local machine only.  Select <b>Shared</b> if you are using shared disk storage and a shared database. You share the Bin with all NewsEdit workstations that are part of the NewsShare network, according to security settings.
Default Bins Location		Enter the default path to your media files.
NTSC Timecode	<b>SMPTE - Drop Frame</b>	Recommended setting to avoid the time slipping problems associated with non-drop frame.
	<b>SMPTE</b>	Standard format used to represent timecode.
Prompt Before Deleting Items	<b>On</b> <b>Off</b>	Check this option to receive a confirmation prompt before deleting files.
Reserve COM1 and COM2 for GPIO	<b>On</b> <b>Off</b>	For NewsEdit XT only: Check this option to keep COM ports 1 and 2 available for an input device to control NewsEdit XT.
Test for Invalid Video Server Characters	<b>On</b> <b>Off</b>	Check this option to have NewsEdit check for invalid characters when creating files, including creating a new clip, creating a new sequence, renaming a Bin object, sending a sequence with a video ID, importing a P2 clip, and editing the name of the sequence when sending to another destination.  Invalid characters are: * \   / < > : “ ? [ ] % & ‘

## Setting Record Options

Setting	Options	Description
Compression Type	<b>MPEG2</b> <b>DV25</b> <b>DV50</b> <b>IMX30</b> <b>IMX40</b> <b>IMX50</b>	Select a Compression Type based on your newsroom preference.  The <b>DV50</b> and <b>IMX</b> formats are optional and may not be available on all systems. The <b>DV25</b> format is the only option for the NewsEdit LT and SC systems.
Bit Rate	<b>4-50 mbits</b>	Enter the Bit Rate specified by your newsroom engineer. More than 25 mbits is optional, and is the standard Bit Rate for NewsEdit LT and SC systems.
Chroma Format	<b>4:1:1</b>	Select the <b>4:1:1</b> Chroma Format if you use DV25 compression.
	<b>4:2:0</b>	Select the <b>4:2:0</b> Chroma Format if you use MPEG2 compression.
	<b>4:2:2</b>	Select the 4:2:0 Chroma Format if you use DV50 or MPEG2 compression. <b>4:2:2</b> offers more color resolution than <b>4:2:0</b> with MPEG2.
Video Aspect	<b>4:3</b>	Select <b>4:3</b> Video Aspect for regular television format.
	<b>16:9</b>	Select <b>16:9</b> Video Aspect for wide-screen television format.
Video Resolution	<b>704 x 480</b>	Select for NTSC systems using MPEG2 compression.
	<b>720 x 512</b>	Select for NTSC systems using MPEG2 compression.
	<b>720 x 480</b>	Select for NTSC systems using DV25, DV50, or MPEG2 compression. You must use <b>720 x 480</b> to transfer files to a Profile server.
	<b>704 x 576</b>	Select for PAL systems using MPEG2 compression.
	<b>720 x 576</b>	Select for PAL systems using DV25, DV50, or MPEG2 compression. You must use <b>720 x 576</b> to transfer files to a Profile server.
	<b>720 x 608</b>	Select for PAL systems using MPEG2 compression.
Mix MPEG and IMX Compression Types		For NewsEdit XT only: Check this option to allow video clips of both MPEG and IMX compression types to be used on this NewsEdit XT system. If you are using IMX compression and sending clips to a Profile for storage and playout, the Profile Server converts the clips to MPEG compression. Therefore, you want to check this option so you can use these clips from the Profile Server at a later time.
Use Tape ID		Check this option to identify which source tape a particular clip came from; used in the Source Tool.



## Setting Output Options — NewsEdit XT only

Setting	Options	Description
Video Connections	<b>Composite</b> <b>S-Video</b> <b>Component</b> <b>Serial D1</b>	Select the Video Connection option that corresponds to the video source's connection to NewsEdit XT.  The <b>S-Video</b> connection is for the Analog Breakout Box only.  If you are using the Pro Digital/Analog Breakout Box, the Component Y output defaults to a second composite output unless you select <b>Component Video</b> .
Audio Connections	<b>Balanced Analog</b> <b>Unbalanced Analog</b> <b>AES/EBU</b> <b>SDI Embedded</b> <b>TDIFF</b> <b>SPDIF</b>	Select the Audio Connection option that corresponds to the audio source's connection to NewsEdit XT.
Video Output to VGA	<b>Composite</b> <b>S-Video</b>	Select the Video Output type for your VGA card.

## Setting Up a Workgroup

In order for a NewsEdit workstation to pull media from other NewsEdit workstations, you need to set up a workgroup. Before setting up the workgroup, make sure all of the NewsroomSuite machines are powered on and logged in; otherwise, not all workstations will appear in the workgroup.

To set up a workgroup:

1. Verify that your Share Name matches the folder name you configured for Default Bins on the General Tab.

If your Default Bins folder has a different name than **VibrintAVFiles**, change it by typing the name in the Share Name field.

2. Click **Update Workgroup List**.

The system lists the available machines for file import or export.

3. Click **OK**.

In addition to setting up a workgroup, you also need to share your media folder to receive files from other NewsEdit workstations. See “Setting Up Media Files for Sharing” on page 57 for instructions.

## Setting Up Send Locations

After completing a sequence you can send it to a playout machine or to a network video server. To send completed sequences or individual clips, you first need to configure NewsEdit with each of your send locations.

A send location can be another NewsEdit workstation, a Media Server, or a Bin you specify. If you want to store completed sequences on your computer, you can also add a send location for your PC.

To set up a send location:

1. Click **Add**.

The Add Named Destination to Send List window appears.

2. Enter the name of the send location.
3. Select the type of location from the drop-down list:

Send Type	Description
<b>Vibrint</b>	Select <b>Vibrint</b> when the send location is another NewsEdit, FeedClip, or NewsQ workstation.
<b>Profile</b>	Select <b>Profile</b> when the send location is a Profile Server or an M-Series iVDR.
<b>Publish</b>	Select <b>Publish</b> when you are using NewsQ Pro to control NewsQ in a shared environment.
<b>SeaChange</b>	Select <b>SeaChange</b> when the send location is a SeaChange server.
<b>GXF ftp</b>	Select <b>GXF ftp</b> to send the completed sequence as a GXF stream which can be used for a generic FTP site.
<b>GXF file</b>	Select <b>GXF file</b> to send the sequence as a GXF file; used to exchange files with other systems.
<b>DV Video ES</b>	Select <b>DV Video ES</b> to send the completed sequence as a DV video elementary stream; used for Publison NewsMix.

4. Check the **Include Graphics** box if you want all graphics to remain with the sequence.
5. Click **Browse** and select the file destination path.

If you are setting up a Profile Media Server as a send location, open Media Manager, click on the desired destination directory, and drag the folder from Media Manager into this field.



---

## Chapter 7 *Configuring NewsEdit Options*

6. Complete the following for your specific type of send location:
  - a. If you are setting up a Profile, SeaChange, or GXF ftp send location, enter the following information:
    - **Host Name** — For Profile, automatically fills in with the computer name for the Profile Video Server; for the others, enter the name of the computer.
    - **User Name** — For Profile, automatically fills in as **movie**; leave as is; for the others, enter your user name.
    - **Password** — For Profile, leave this field blank; for the others, enter the password for the send location, if you have one.
  - b. If you are setting up a Publish-type send location, check the **Render All Effects** box if you want all transitions and effects rendered before sending.
  - c. If you are setting up a DV Video ES-type send location, check the **Include EDL for Sequence** box if you want an EDL of the sequence sent to the same destination folder as the DV video elementary stream.
7. Check the **NewsQ Pro Destination** box if this send location is a NewsQ Pro server.
8. Click **OK**.
9. For NewsEdit XT only—On the Send tab, check the **GXF Sequence Transfer** box if you want to send sequences via GXF. If unselected, NewsEdit can send sequences to a Profile Server in an Open SAN system, without using a fiber channel IP connection.



## Setting Handles

Setting		Description
Handle Type	<b>Import</b>	Select <b>Import</b> when you are importing a file from another workstation to your own.
	<b>Export</b>	Select <b>Export</b> when you are exporting files from your workstation to another workstation or server.
	<b>Trimmer</b>	Select <b>Trimmer</b> when you are trimming a clip with the Trim Tool and trim the set duration from either side of your clip.
	<b>Consolidation</b>	Select <b>Consolidation</b> when you are consolidating a clip or sequence, which reduces the file size by removing unused footage.
	<b>Render</b>	Select <b>Render</b> when you are using media with effects and transitions; provides handles to effects that are mixed down.

To change the handle durations, select the handle type from the drop-down menu and enter the new duration in the In or Out fields.

## Setting Timeline Options

Setting	Options	Description
Audio Output	<b>1+2</b> <b>3+4</b> <b>All</b>	Select the output routing for each audio channel and set its pan direction.
Undo/Redo Limit	<b>1 - 1024</b>	Enter the number of undo levels you want NewsEdit XT to track. <i><b>NOTE: Increasing the number of undo levels increases NewsEdit's system memory usage.</b></i>
Default Play Speed		Enter the speed at which to play clips when reviewing them in the Timeline. The default Play Speed is 200%.
Review Edit Duration		Enter the amount of preroll to play on a clip prior to playing the edit you're reviewing. The default Edit Duration is 3 seconds.
Output Channels	<b>1-8</b>	Select the number of output channels you are using.



## Setting Graphics Options

Setting	Description
Initial Duration	Enter the initial duration for a graphic placed on the Timeline.
Fade In	Enter the number of frames over which the graphic fades in to the clip.
Fade Out	Enter the number of frames over which the graphic fades out to the next clip.
Editor	Indicates whether the Chyron plug-in is installed with the system.
Advanced Mode Enabled	Check to use the Advanced Mode of the Title Tool; you need the Chyron plug-in installed to use this feature.
Templates Folder	Enter the path to the Graphics template directory.

## Setting Controller Options

Setting	Options	Description
422 Controller Comm Port	<b>None</b> <b>COM1</b> through <b>COM10</b>	If you are using an external controller with NewsEdit, select the COM port to which it is connected. Otherwise, select None.
USB Controller Comm Port		
USB Controller Comm Port		

## Setting NewsQ Pro Options

It is recommended that you review the NewsQ Pro documentation before configuring NewsQ Pro options.

Setting		Description
Primary Database	Server	Enter the server name where the primary NewsQ Pro database resides.
	Ports	Enter the port numbers used to access the primary NewsQ Pro database.
Backup Database	Server	Enter the server name where the secondary NewsQ Pro database resides.
	Ports	Enter the port numbers used to access the secondary NewsQ Pro database.
Thumbnails	Server	Enter the server name where NewsQ Pro stores video clip thumbnails.
	Path	Enter the path to the thumbnail directory.
Categories		Lists the currently configured NewsQ Pro categories. If you are using NewsQ Pro version 1.5 or later, you don't need to add categories here. Categories are set in the SDB Server options and propagated to NewsEdit.  To add a category: Click <b>Add</b> , enter a category name, and click <b>OK</b> .
Background Row Colors		Displays the Background and Text Rows in different colors to alert other editors that this sequence is being edited.
Text Row Colors		



---

*Chapter 7    Configuring NewsEdit Options*

## ***Configuring FeedClip Options***

Before you can successfully use FeedClip, you need to configure it for the particular equipment in your newsroom.

This chapter discusses how to:

- Set options for your newsroom
- Configure record settings
- Configure playback settings
- Configure scheduler settings



## Default Configuration Settings

Your FeedClip software sets most configuration options to a default value, as listed below:

Option	Configuration Item		Default Value
Tools/Options/General	Connection Mode	Local	Dependent on software installation choice
		Shared	
	Use House Clock		off
	NTSC Timecode		SMPTE - Drop Frame
	Prompt Before File Overwrite		✓
	Display Time Remaining for Playback		✓
	Test for Invalid Video Server Characters		off
	Delete Subclips When Removing Scheduled Feeds		✓
	Abort Time (Hours Remaining)		0.1 (6 mins)
	Channel		1
	.../Handles	Channel 1	Record Name
Playback Name			Channel 1
Channel 2		Record Name	Channel 2
		Playback Name	Channel 2
.../Handles	Edit Clips	In Handles	1 second
		Out Handles	1 second
	Send to File	In Handles	1 second
		Out Handles	1 second
.../Workgroup	Share Name		VibrintAVFiles
.../Send			<<none set up>>
.../Colors			<<as is>>

## *Default Configuration Settings*

<b>Option</b>	<b>Configuration Item</b>		<b>Default Value</b>
.../Control Panel	COM Port		None
.../NewsQ Pro	Primary Database	Server	localhost
		Ports	2000/2001
	Backup Database	Server	<<blank>>
		Ports	2002/2003
	Thumbnails	Server	localhost
		Path	C:\
	Categories		All
	Background Row Colors		<<as is>>
Text Row Colors		<<as is>>	
Record Settings/General	Video Format		NTSC
	Has Setup		✓
	Record To		E:/VibrintAVFiles
	Create Files In Subfolders		✓
	Bit Rate		16 mbits
	Compression Type		MPEG2
	Chroma Format		4:2:2
	Video Resolution		720x480
	Video Aspect		4:3
.../Auto-Marking	Adjust Mark In by Reaction Time		Disabled — 1 second
	Auto-Mark Out Clip From Duration		Disabled — 30 seconds
.../Inputs	Video Source		Composite
	Audio Source		Balanced Analog



---

## Chapter 8 *Configuring FeedClip Options*

Option	Configuration Item	Default Value
.../Outputs	Video Output	Composite
	Audio Output	Unbalanced Analog
.../Audio Channel Settings	Channel 1	✓
	Channel 2	✓
.../Automation	Protocol	None
	Comm Port	<None>
Playback Settings/General	Video Format	NTSC
	Has Setup	✓
	PreRoll	0
	Turn Off Audio During PreRoll	off
	PostRoll	0
	Turn Off Audio During PostRoll	off
.../Slow Motion	Enable Slow Motion Controls	✓
	Use Full Range in Speed Slider	✓
	Speed 1	0%
	Speed 2	50%
	Speed 3	75%
	Speed 4	100%
.../Genlock	Enable Genlock	off
	Horizontal Phase	0
	Subcarrier Phase	0
.../Outputs	Video Output	Composite
	Audio Output	Unbalanced Analog



---

*Default Configuration Settings*

<b>Option</b>	<b>Configuration Item</b>		<b>Default Value</b>
.../Automation	Protocol		None
	Comm Port		<None>
Schedule Settings/General	Add Recurring Entries	1-30 days	1 day
	Remove Entries After	1-365 days	3 days
	Enable Schedule Locking		off
.../Colors			<<as is>>



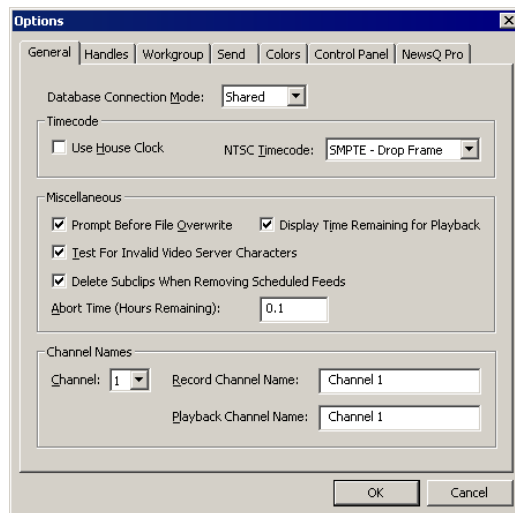
## Setting Options for Your Newsroom

You need to configure FeedClip for the specific equipment you are using in your newsroom.

To configure your FeedClip system:

1. Choose **Tools | Options**.

The Options window opens:



2. Go through each tab on the Options window and configure FeedClip using the descriptions in the sections below.
3. Click **OK** when you are done configuring your system.

## Setting General Options

Setting	Options	Description
Database Connection Mode	<b>Local</b> <b>Shared</b>	Select <b>Local</b> if you are using local disk storage and a local FeedClip database. You have access to files on your local machine only.  Select <b>Shared</b> if you are using shared disk storage and a shared database. You share the Bin with all FeedClip workstations that are part of the NewsShare network.
Use House Clock	<b>On</b> <b>Off</b>	Check this if you want to have FeedClip use your newsroom's house clock to synchronize feeds.  If you turn on this option without having a house clock connected, FeedClip uses the workstation's system clock for the timecode.
NTSC Timecode	<b>SMPTE-Drop Frame</b>	Recommended setting to avoid the time slipping problems associated with non-drop frame.
	<b>SMPTE</b>	Standard format used to represent timecode.
Prompt Before File Overwrite	<b>On</b> <b>Off</b>	Check this option to receive a confirmation prompt before overwriting existing files.
Display Time Remaining for Playback	<b>On</b> <b>Off</b>	Check this option to have FeedClip show you how much time is remaining while playing back a clip in the playlist.
Test for Invalid Video Server Characters	<b>On</b> <b>Off</b>	Check this option to have FeedClip check for invalid characters when creating files.  Invalid characters are: * \   / < > : " ? [ ] % & '
Delete Subclips When Removing Scheduled Feeds	<b>On</b> <b>Off</b>	Check this option to allow any subclips that are created with a scheduled feed to be deleted when the scheduled feed is removed from the scheduler. If unchecked, a scheduled feed will not be deleted if any subclips are associated with the feed.
Abort Time (Hours Remaining)	N/A	Enter the amount of time (in hours) before recording stops; FeedClip stops recording when this amount of time is remaining for recording. The default time is 0.1.
Channel	<b>1/2</b>	Select the channel to name.
Record Channel Name	N/A	Enter a name for the record channel.
Playback Channel Name	N/A	Enter a name for the playback channel.



## Setting Handles

You use Edit Clips handles when you want additional footage at the beginning and end of a clip for additional editing. The default duration is 5 seconds. You use Send to File handles when sending a clip or feed to another workstation or server. The default duration is 2 seconds.

If you want to change the handle duration, type the new number in the field.

## Setting Up Your Workgroup

In order for your FeedClip workstation to be able to send media to other workstations or media servers, you need to set up a workgroup.

To set up a workgroup:

1. Make sure that your Share Name is **VibrintAVFiles**.
2. Click **Update Workgroup List**.

The system lists the available machines for file export.

3. Click **OK**.

In addition to setting up a workgroup, you also need to share your media folder in order to receive files from other FeedClip workstations. See “Setting Up Media Files for Sharing” on page 57 for instructions.

## Setting Up Send Locations

Once you create a series of clips, you can send them to another NewsEdit workstation or to a network video server. In order to send clips, you first need to configure FeedClip with each of the send locations you will use.

A send location can be a NewsEdit XT workstation, a Profile Media Server, or a Bin you specify. If you want to store clips on your computer, you can also add a send location for your PC.

To set up a send location:

1. Click **Add**.

The Add Named Destination to Send List window appears.

2. Enter the name of the send location.

3. Select the type of location from the drop-down list.

Send Type	Description
<b>Vibrint</b>	Select <b>Vibrint</b> when the send location is another NewsEdit, FeedClip, or NewsQ workstation.
<b>Profile</b>	Select <b>Profile</b> when the send location is a Profile Server or an M-Series iVDR.
<b>SeaChange</b>	Select <b>SeaChange</b> when the send location is a SeaChange server.
<b>GXF ftp</b>	Select <b>GXF ftp</b> to send the completed sequence as a GXF stream which can be used for a generic FTP site.
<b>GXF file</b>	Select <b>GXF file</b> to send the sequence as a GXF file; used to exchange files with other systems.

4. Check the **Include Graphics** box if you want all graphics to remain with the sequence.
5. Click **Browse** and select the file destination path.

If you are setting up a Profile Media Server as a send location, open Media Manager, click on the desired destination directory, and drag the folder from Media Manager into this field.
6. If you are setting up a Profile, SeaChange, or GXF ftp send location, enter the following information:
  - **Host Name** — For Profile, automatically fills in with the computer name for the Profile Video Server; for the others, enter the name of the computer.
  - **User Name** — For Profile, automatically fills in as **movie**; leave as is; for the others, enter your user name.
  - **Password** — For Profile, leave this field blank; for the others, enter the password for the send location, if you have one.
7. Check the **NewsQ Pro Destination** box if this send location is a NewsQ Pro server.
8. Click **OK**.



## Setting Colors

In the clip list, different colors indicate the status of clips. If you want to change any of the colors in the FeedClip interface:

1. Click the **Change...** button for the playlist row color you want to change.  
The Color window opens.
2. Pick the new color and click **OK**.
3. Change other colors, if you wish.
4. Click **OK** when you are done.

## Setting Controller Options

If you are using an external controller with FeedClip, select the COM Port you are using.

## Setting NewsQ Pro Options

It is recommended that you review the NewsQ Pro documentation before configuring NewsQ Pro options.

Setting		Description
Primary Database	Server	Enter the server name where the primary NewsQ Pro database resides.
	Ports	Enter the port numbers used to access the primary NewsQ Pro database.
Backup Database	Server	Enter the server name where the secondary NewsQ Pro database resides.
	Ports	Enter the port numbers used to access the secondary NewsQ Pro database.
Thumbnails	Server	Enter the server name where NewsQ Pro stores video clip thumbnails.
	Path	Enter the path to the thumbnail directory.
Categories		Lists the currently configured NewsQ Pro categories. If you are using NewsQ Pro version 1.5 or later, you don't need to add categories here. Categories are set in the SDB Server options and propagated throughout the system.  To add a category, click <b>Add</b> , enter a category name, and click <b>OK</b> .
Background Row Colors		Displays the Background and Text Rows in different colors to alert other editors that this sequence is being edited.
Text Row Colors		

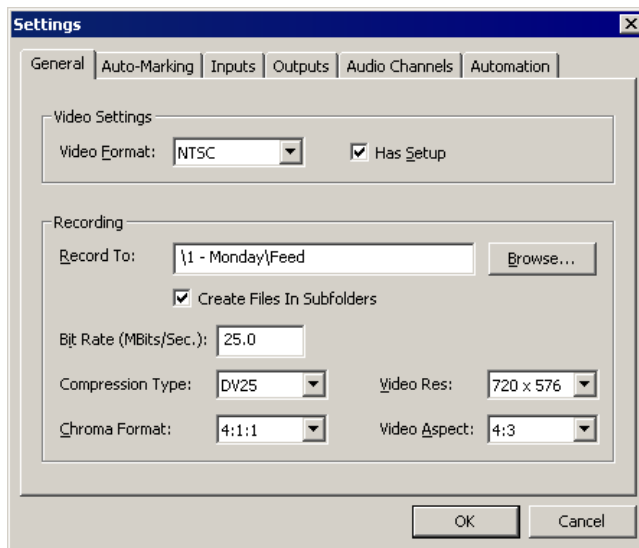
## Configuring Record Settings

You need to configure FeedClip for the type of recording you are doing in your newsroom.

To configure your FeedClip system:

1. Click the **Settings...** button on the Record tab.

The Settings window opens:



2. Go through each tab on the Settings window and configure FeedClip using the descriptions in the sections below.
3. Click **OK** when you are done configuring your system.



## General Settings

Setting	Options	Description
Video Format	<b>NTSC</b> <b>PAL</b>	Select the Video Format you are using. NTSC has a frame rate of 29.97 frames/sec and is used primarily in the Americas and Japan. PAL has a frame rate of 25 frames/sec and is used in Europe, most of Asia, and Australia.
Has Setup	<b>On</b> <b>Off</b>	Check Has Setup if the analog composite signal carries setup information.
Record To		Enter the default bin location for recorded media files.
Create Files In Subfolders	<b>On</b> <b>Off</b>	Check this option to have recorded feeds and associated subclips stored in a separate subfolder. If the Record To location for recorded files is a SmartBin, you must leave this checkbox unchecked. When the scheduler is enabled, this box is grayed out.
Bit Rate	<b>4-50 mbits</b>	Enter the Bit Rate specified by your newsroom engineer. More than 25 mbits is optimal.
Compression Type	<b>MPEG2</b> <b>DV25</b> <b>DV50</b> <b>IMX30</b> <b>IMX40</b> <b>IMX50</b>	Select a Compression Type based on your newstation preference.  The <b>DV50</b> and <b>IMX</b> formats are optional and may not be available on all systems.
Chroma Format	<b>4:1:1</b>	Select the <b>4:1:1</b> Chroma Format if you use DV25 compression.
	<b>4:2:0</b>	Select the <b>4:2:0</b> Chroma Format if you use MPEG2 compression.
	<b>4:2:2</b>	Select the <b>4:2:2</b> Chroma Format if you use DV50 or MPEG2 compression. 4:2:2 offers more color resolution than 4:2:0.
Video Resolution	<b>704 x 480</b>	Select for NTSC systems using MPEG2 compression.
	<b>720 x 480</b>	Select for NTSC systems using DV25, DV50, or MPEG2 compression.
	<b>720 x 512</b>	Select for NTSC systems using MPEG2 compression.
	<b>704 x 576</b>	Select for PAL systems using MPEG2 compression.
	<b>720 x 576</b>	Select for PAL systems using DV25, DV50, or MPEG2 compression.
	<b>720 x 608</b>	Select for PAL systems using MPEG2 compression.
Video Aspect	<b>4:3</b>	Select <b>4:3</b> Video Aspect for regular television format.
	<b>16:9</b>	Select <b>16:9</b> Video Aspect for wide-screen television format.



## Auto-Marking Settings

Setting	Description
Adjust Mark In by Reaction Time	Check this to have FeedClip adjust the Mark In by the reaction time you set. The default duration is 1 second.
Auto-Mark Out Clip From Duration	Check this to have FeedClip automatically create a Mark Out based on the duration of the clip. The default duration is 30 seconds.

## Input Settings

Setting	Options	Description
Video Source	<b>Composite</b> <b>S-Video</b> <b>Component</b> <b>Serial D1</b>	Select the Video Source option that corresponds to the video source's connection to FeedClip.  If you are using the Pro D&A Break Out Box, the Component Y output defaults to a second composite output unless you select <b>Component</b> Video.
Audio Source	<b>Balanced Analog</b> <b>Unbalanced Analog</b> <b>AES/EBU</b> <b>SDI Embedded</b> <b>TDIFF</b>	Select the Audio Source option that corresponds to the audio source's connection to FeedClip.

## Output Settings

Setting	Options	Description
Video Output	<b>Composite</b> <b>S-Video</b> <b>Component</b> <b>Serial D1</b>	Select the Video Output option that corresponds to the video source's connection to FeedClip.  If you are using the Pro D&A Break Out Box, the Component Y output defaults to a second composite output unless you select <b>Component</b> Video.
Audio Output	<b>Balanced Analog</b> <b>Unbalanced Analog</b> <b>AES/EBU</b> <b>SDI Embedded</b> <b>TDIFF</b> <b>SPDIF</b>	Select the Audio Output option that corresponds to the audio source's connection to FeedClip.



## Audio Channel Settings

Check the boxes for each of the audio channels you are using for FeedClip input. For example, if you are using two channels make sure to deselect the other two.

## Automation Settings

Setting	Options	Description
Protocol	<b>Odetics Control Protocol</b>	Select <b>Odetics Control Protocol</b> if you are using an automation system to control your FeedClip workstation; otherwise, select <b>None</b> .
Comm Port	<b>COM1 - COM10</b>	If you are using the Odetics Control Protocol, select the COM Port to which it is connected.

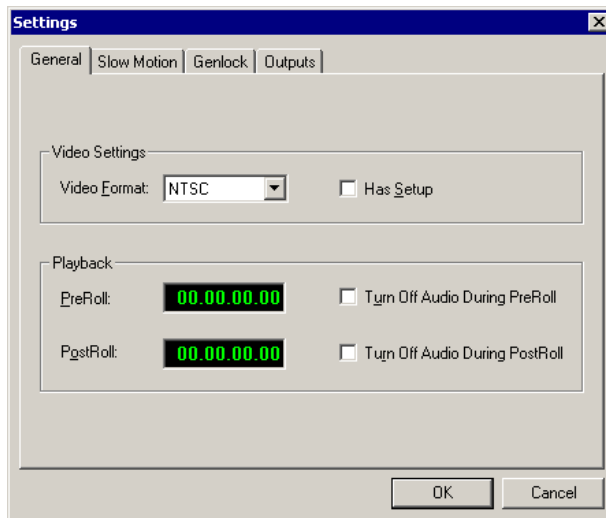
## Configuring Playback Settings

You need to configure FeedClip for the type of playback you are using in your newsroom.

To configure your FeedClip system:

1. Click the **Settings...** button on the Playback tab.

The Settings window opens:



2. Go through each tab on the Settings window and configure FeedClip using the descriptions in the sections below.
3. Click **OK** when you are done configuring your system.



## General Settings

Setting	Options	Description
Video Format	<b>NTSC</b> <b>PAL</b>	Select the Video Format you are using.  NTSC has a frame rate of 29.97 frames/sec and is used primarily in the Americas and Japan. PAL has a frame rate of 25 frames/sec and is used in Europe, most of Asia, and Australia.
Has Setup	<b>On</b> <b>Off</b>	Check <b>Has Setup</b> if the analog composite signal carries setup information.
PreRoll		Enter the number of seconds of preroll you want to use for playback of clips.  The default duration is zero seconds.
Turn Off Audio During PreRoll	<b>On</b> <b>Off</b>	Check this option if you don't want to hear audio during preroll.
PostRoll		Enter the number of seconds of postroll you want to use when playing clips.  The default duration is zero seconds.
Turn Off Audio During PostRoll	<b>On</b> <b>Off</b>	Check this option if you don't want to hear audio during postroll.

## Slow Motion Settings

Setting	Options	Description
Enable Slow Motion Controls	<b>On</b> <b>Off</b>	Check this option to view clips in slow motion during playback.
Use Full Range In Speed Slider	<b>On</b> <b>Off</b>	Check this option to use the slider range of 0% to 100% instead of 0% to the selected top speed.
Speed 1 - Speed 4	<b>0% to 100%</b>	Enter the percentage speed for each of the four speeds. The speeds are on the Playback tab.  The default speeds are: Speed 1 — 0% Speed 2 — 50% Speed 3 — 75% Speed 4 — 100%

## Genlock Settings

Setting	Options	Description
Enable Genlock	<b>On Off</b>	Check this option to use Genlock with FeedClip. Genlock is the synchronization of two television signals at the vertical, horizontal, and chroma phase levels such that the signals may be cut, mixed, or cross-faded without noticeable roll, jump, or chroma shift.
Horizontal Phase	<b>-5148 to +5148</b>	Select the appropriate Horizontal Phase by moving the sliders, typing the number, or using the up and down arrows.
Subcarrier Phase	<b>-180 to +180</b>	Select the appropriate Subcarrier Phase by moving the sliders, typing the number, or using the up and down arrows.
Use Defaults		Click this button to return Genlock settings to their default positions.

## Output Settings

Setting	Options	Description
Video Output	<b>Composite S-Video Component Serial D1</b>	Select the Video Output option that corresponds to the video source's connection to FeedClip.  If you are using the Pro D&A Break Out Box, the Component Y output defaults to a second composite output unless you select <b>Component Video</b> .
Audio Output	<b>Unbalanced Analog Balanced Analog AES/EBU SDI Embedded</b>	Select the Audio Output option that corresponds to the audio source's connection to FeedClip.

## Automation Settings

Setting	Options	Description
Protocol	<b>Odetics Control Protocol</b>	Select <b>Odetics Control Protocol</b> if you are using an automation system, like NewsQ Pro, to control your FeedClip workstation; otherwise, select <b>None</b> .
Comm Port	<b>COM1 - COM10</b>	If you are using the Odetics Control Protocol, select the COM Port to which it is connected.



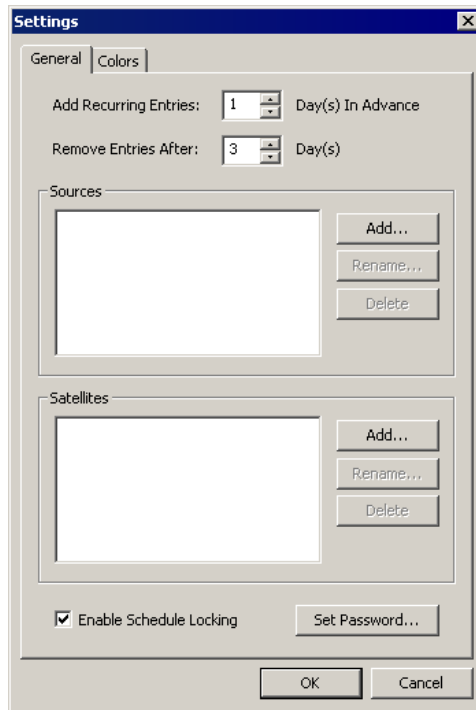
## Configuring Scheduler Settings

You need to configure FeedClip for your scheduling preferences.

To configure your FeedClip system:

1. Click the **Settings...** button on the Scheduler tab.

The Settings window opens:



2. Go through each tab on the Settings window and configure FeedClip using the descriptions in the sections below.
3. Click **OK** when you are done configuring your system.

## General Settings

Setting	Options	Description
Add Recurring Entries	1 - 30 days	Number of days to display recurring entries in the Record tab. The default duration is 1 day.
Remove Entries After	1 - 365 days	Number of days to keep recorded entries before deleting. The default duration is 3 days.
Enable Schedule Locking	<b>On</b> <b>Off</b>	Check this option to require a password to make changes to the FeedClip recording schedule.  When you check this option, click <b>Set Password</b> and enter a password for this feature. Once set, a password is required to lock or unlock the scheduler.
Sources and Satellites		Lists the currently configured sources and satellites. If you need to add a new source or satellite to use with FeedClip:  Click <b>Add</b> , enter a name for the new source, and click <b>OK</b> .  The name of the source is a label to help you identify sources. Names do not affect functionality and are not required.  You can also rename or delete a source or satellite by highlighting the source and clicking the Rename or Delete button.

## Color Settings

In the scheduler list, different colors indicate the status of feeds. If you want to change any of the scheduling colors in the FeedClip interface:

1. Click the **Change...** button for the scheduling row color you want to change.  
The Colors window opens.
2. Pick the new color and click **OK**.
3. If you wish, change other colors.
4. Click **OK** when you are done.



*Chapter 8 Configuring FeedClip Options*



## ***Configuring NewsQ Options***

Before you can successfully use NewsQ, you need to configure it for the particular equipment in your newsroom.

This chapter discusses how to:

- Set options for your newsroom
- Configure playback channel settings



## Default Configuration Settings

Your NewsQ software sets most configuration options to a default value, as listed below:

Option	Configuration Item		Default Value
Tools/Options/General	Video Format		NTSC
	Has Setup		✓
	Database Connection Mode	Local	Dependent on software installation choice
		Shared	
	Default Bins Location		E:\VibrantAVFiles
	NTSC Timecode		SMPTE - Drop Frame
	Prompt Before Deleting Items		✓
Test for Invalid Video Server Characters		off	
.../Output	Video Connections		Composite
	Audio Connections		Balanced Analog
	Channels		1
.../Workgroup	Share Name		VibrantAVFiles
.../Send			<<None set up>>
.../Handles	Handle Type	Import	1 second
		Trimmer	10 seconds
		Consolidation	10 seconds
		Render	1 second

*Default Configuration Settings*

<b>Option</b>	<b>Configuration Item</b>		<b>Default Value</b>
.../NewsQ Pro	Primary Database	Server	localhost
		Ports	2000/2001
	Backup Database	Server	<<blank>>
		Ports	2002/2003
	Thumbnails	Server	localhost
		Path	C:\
	Categories		All
	Background Row Colors		<<as is >>
Text Row Colors		<<as is>>	
Playback Settings/GPIO	Enable Triggers		off
	Trigger	1 Channel	<None>
	Commands (First, Second, Third)		<None>
.../Genlock	Enable Genlock		off
	Horizontal Phase		0
	Subcarrier Phase		0
.../Automation	Protocol		None
	Comm Port		<None>
	Default Bin		<<blank>>



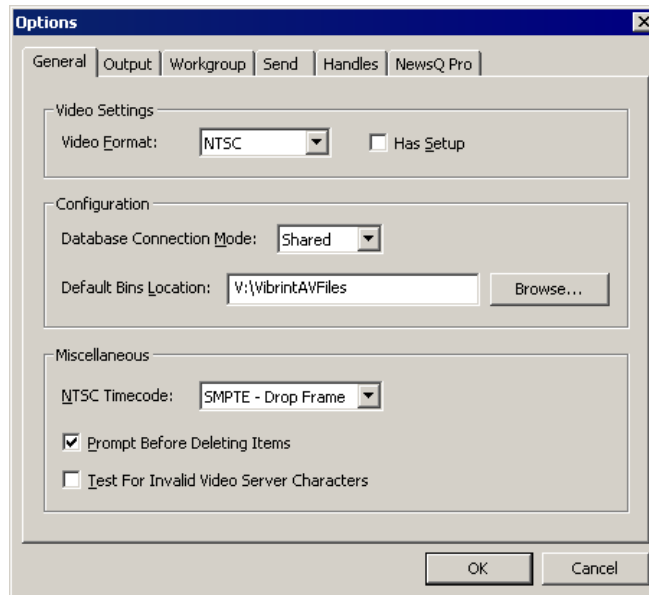
## Setting Options for Your Newsroom

You need to configure NewsQ for the specific equipment you are using in your newsroom.

To configure your NewsQ system:

1. Choose **Tools | Options**.

The Options window opens:



2. Go through each tab on the Options window and configure NewsQ using the descriptions in the sections below.
3. Click **OK** when you are done configuring your system.

## Setting General Options

Setting	Options	Description
Video Format	<b>NTSC</b> <b>PAL</b>	Select the Video Format you are using.  <b>NTSC</b> has a frame rate of 29.97 frames/second and is used primarily in the Americas and Japan. <b>PAL</b> has a frame rate of 25 frames/second and is used in Europe, most of Asia, and Australia.
Has Setup	<b>On</b> <b>Off</b>	Check <b>Has Setup</b> if the analog composite signal carries setup information.
Database Connection Mode	<b>Local</b> <b>Shared</b>	Select <b>Local</b> if you are using local disk storage and a local NewsQ database. You have access to files on your local machine only.  Select <b>Shared</b> if you are using shared disk storage and a shared database. You share the Bin with all NewsQ workstations that are part of the NewsShare network.
Default Bins Location		Enter the default path to your media files.
NTSC Timecode	<b>SMPTE - Drop Frame</b>	Recommended setting to avoid the time slipping problems associated with non-drop frame.
	<b>SMPTE</b>	Standard format used to represent timecode.
Prompt Before Deleting Items	<b>On</b> <b>Off</b>	Check this option to receive a confirmation prompt before deleting files. The default is On.
Test for Invalid Video Server Characters	<b>On</b> <b>Off</b>	Check this option to have NewsQ check for invalid characters when creating files, including creating a new clip, creating a new sequence, renaming a Bin object, sending a sequence with a video ID, and editing the name of the sequence when sending to another destination.  Invalid characters are: * \   / < > : " ' ? [ ] % & ' & #



## Setting Output Options

Setting	Options	Description
Video Connections	<b>Composite</b> <b>S-Video</b> <b>Component</b> <b>Serial D1</b>	Select the Video Connection option that corresponds to the video source's connection to NewsQ.  If you are using the Pro D&A Break Out Box, the Component Y output defaults to a second composite output unless you select <b>Component</b> video.
Audio Connections	<b>Balanced Analog</b> <b>Unbalanced Analog</b> <b>AES/EBU</b> <b>SPDIF</b> <b>TDIFF</b> <b>SDI Embedded</b>	Select the Audio Connection option that corresponds to the audio source's connection to NewsQ.
Channels	<b>1</b> <b>2</b>	Select the channel for which you are currently setting output options.

## Setting Up a Workgroup

In order for each NewsQ workstation to be able to pull media from other Digital News Production workstations, you need to set up a workgroup.

To set up a workgroup:

1. Make sure that your Share Name is **VibrantAVFiles**.
2. Click **Update Workgroup List**.

The system lists the available machines for file import or export. This may take several minutes while the network is searched.

3. Click **OK**.

In addition to setting up a workgroup, you also need to share your media folder in order to receive files from other workstations. See “Setting Up Media Files for Sharing” on page 57 for instructions.

## Setting Up Send Locations

In addition to creating playlists, you can send a clip or sequence from your Bin to a playout machine or to a network video server. In order to send completed sequences or individual clips, you first need to configure NewsQ with each of the send locations you will use.

A send location can be a NewsEdit XT workstation, a Profile Media Server, or a Bin you specify. If you want to store clips on your computer, you can also add a send location for your PC.

To set up a send location:

1. From the Send tab, click **Add**.

The Add Named Destination to Send List window appears.

2. Enter the name of the send location.
3. Select the type of location from the drop-down list.

Send Type	Description
<b>Vibrint</b>	Select <b>Vibrint</b> when the send location is another NewsEdit, FeedClip, or NewsQ workstation.
<b>Profile</b>	Select <b>Profile</b> when the send location is a Profile Server or an M-Series iVDR.
<b>Publish</b>	Select <b>Publish</b> when you want to send completed sequences directly to air; all material for playing to air goes to one location.
<b>SeaChange</b>	Select <b>SeaChange</b> when the send location is a SeaChange server.
<b>GXF ftp</b>	Select <b>GXF ftp</b> to send the completed sequence as a GXF stream which can be used for a generic FTP site.
<b>GXF file</b>	Select <b>GXF file</b> to send the sequence as a GXF file; used to exchange files with other systems.

4. Check the **Include Graphics** box if you want all graphics to remain with the sequence.
5. Click **Browse** and select the file destination path.

If you are setting up a Profile Media Server as a send location, open Media Manager, click on the desired destination directory, and drag the folder from Media Manager into this field.



6. If you are setting up a Profile, SeaChange, or GXF ftp send location, enter the following information:
  - **Host Name** — For Profile, automatically fills in with the computer name for the Profile Video Server; for the others, enter the name of the computer.
  - **User Name** — For Profile, automatically fills in as **movie**; leave as is; for the others, enter your user name.
  - **Password** — For Profile, leave this field blank; for the others, enter the password for the send location, if you have one.
7. If you are setting up a Publish-type send location, check the **Render All Effects** box if you want all transitions and effects rendered before sending.
8. Check the **NewsQ Pro Destination** box if this send location is a NewsQ Pro server.
9. Click **OK**.

## Setting Handles

Setting		Description
Handle Type	<b>Import</b>	Select <b>Import</b> when you are importing a file from another workstation to your own.
	<b>Trimmer</b>	Select <b>Trimmer</b> when you are trimming a clip with the Trim Tool and trim the set duration from either side of your clip.
	<b>Consolidation</b>	Select <b>Consolidation</b> when you are consolidating a clip or sequence, which reduces the file size by removing unused footage.
	<b>Render</b>	Select <b>Render</b> when you are using media with effects and transitions; handles provide additional media between clips in case you need it.

To change the handle durations, select the handle type from the drop-down menu and enter the new duration in the In or Out fields.



## Setting NewsQ Pro Options

Setting		Description
Primary Database	Server	Enter the server name where the primary NewsQ Pro database resides.
	Ports	Enter the port numbers used to access the primary NewsQ Pro database.
Backup Database	Server	Enter the server name where the secondary NewsQ Pro database resides.
	Ports	Enter the port numbers used to access the secondary NewsQ Pro database.
Thumbnails	Server	Enter the server name where NewsQ Pro stores video clip thumbnails.
	Path	Enter the path to the thumbnail directory.
Categories		<p>Lists the currently configured NewsQ Pro categories. If you are using NewsQ Pro version 1.5 or later, you don't need to add categories here. Categories are set in the SDB Server options and propagated throughout the system.</p> <p>To add a category, click <b>Add</b>, enter a category name, and click <b>OK</b>.</p>
Background Row Colors		Displays the Background and Text Rows in different colors to alert other editors that this sequence is being edited.
Text Row Colors		



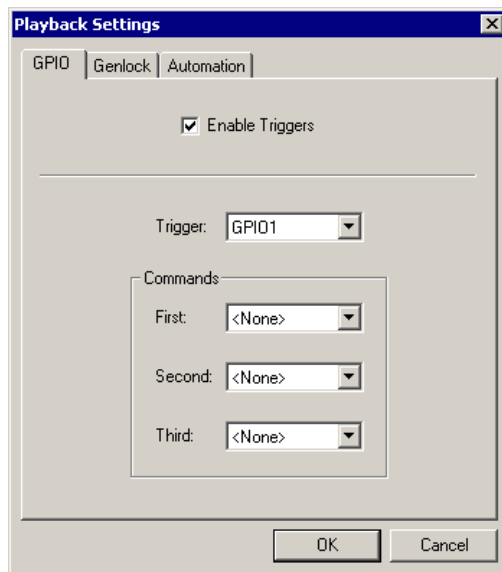
## Configuring Playback Channel Settings

You need to configure NewsQ for the type of playback you are using in your newsroom.

To configure playback channel settings:

1. Click the **Settings** button on the Playback Channel window.

The Playback Settings window opens:



2. Go through both tabs and configure NewsQ using the descriptions in the sections below.
3. Click **OK** when you are done configuring playback channel settings.

## Configuring GPIO Settings

General Purpose Interface (GPIO) inputs allow you to connect a switcher or other control device to the NewsQ system and use it as an input device to control the NewsQ software application.

For example, you set GPI01 to **Cue Selected** as the first function and **Play** as the second function. When you activate GPI trigger 1 on the controller, the selected clip will cue up and then play.

To reassign the function of any of the GPI inputs, select the GPI trigger number and the function you want the GPI to perform.

Setting	Options	Description
Enable Triggers	<b>On</b> <b>Off</b>	Check this option if you want to use GPI inputs to control the NewsQ software.
Trigger	Single-channel system: <b>GPI01 - GPI06</b>  Dual-channel system: <b>GPI01 - GPI03</b> for Channel 1 <b>GPI01 - GPI03</b> for Channel 2	Select the number of the GPI trigger you are configuring.



---

## Chapter 9 *Configuring NewsQ Options*

<b>Setting</b>	<b>Options</b>	<b>Description</b>
First, Second, and Third Functions	<b>&lt;None&gt;</b>	No action selected.
	<b>Re-Cue</b>	Re-cues the currently selected clip in the playback list.
	<b>Cue Next</b>	Cues the next clip in the playback list.
	<b>Cue Previous</b>	Cues the previous clip in the playback list.
	<b>Cue Selected</b>	Cues the selected clip in the playback list.
	<b>Play</b>	Plays the cued clip.
	<b>Reorder Down</b>	Moves the selected clip down one space in the playback list.
	<b>Reorder Up</b>	Moves the selected clip up one space in the playback list.
	<b>Select Next</b>	Selects the next clip in the playlist.
	<b>Select Previous</b>	Selects the previous clip in the playlist.
	<b>Stop</b>	Stops playing a clip.

## Configuring Genlock Settings

Setting	Options	Description
Enable Genlock	<b>On</b> <b>Off</b>	Check this option to use Genlock with NewsQ. Genlock is the synchronization of two television signals at the vertical, horizontal, and chroma phase levels such that the signals may be cut, mixed, or cross-faded without noticeable roll, jump, or chroma shift.
Horizontal Phase	<b>-5148 to +5148</b>	Select the appropriate Horizontal Phase by moving the slider, typing the number, or using the up and down arrows.
Subcarrier Phase	<b>-180 to +180</b>	Select the appropriate Subcarrier Phase by moving the slider, typing the number, or using the up and down arrows.
Use Defaults		Click this option to return Genlock settings to their default positions.

## Configuring Automation Settings

Setting	Options	Description
Protocol	<b>None</b> <b>Odetics Control Protocol</b>	Select <b>Odetics Control Protocol</b> if you are using an automation system, like NewsQ Pro, to control your NewsQ workstation; otherwise, select <b>None</b> .
Comm Port	<b>COM3</b> through <b>COM10</b>	If you are using the Odetics Control Protocol, select the COM Port to which it is connected.
Default Bin		Enter the default path to your media files for playout.



---

*Chapter 9    Configuring NewsQ Options*

## ***Pin Assignments***

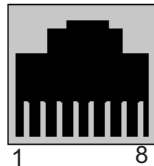
This appendix provides pin assignments for various connections to the NewsroomSuite computer workstation.



## RJ-45 Connectors

Category 5 unshielded twisted pair (UTP) cable supports up to 100 megabits per second. The cable contains four twisted pairs of wires, for a total of eight wires.

The four pairs of wires in UTP cable are color-coded so that they can be identified at each end of the cable. Typically, the pairs are made up of a solid color and the same color striped with white. The following illustration and table shows the standard pin configuration for an 8-pin RJ-45 connector.



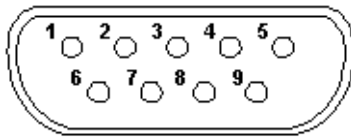
Pin	Color Code
1	Orange/white stripe
2	Orange
3	Green/white stripe
4	Blue
5	Blue/white stripe
6	Green
7	Brown/white stripe
8	Brown



---

## GPI Pin Assignments

There are 2 COM port connectors on the backplane of the NewsroomSuite computer, COM1 and COM2, which are located alongside the other motherboard connectors. Both COM ports are generally used for the NewsQ application but can also be used with NewsEdit XT. See the User Guide for setting up the GPI Commands in relationship to the pins shown in the illustration and table below.



Pin	COM1 Function	COM2 Function
1	-	-
2	-	-
3	-	-
4	-	-
5	Chassis Ground	Chassis Ground
6	IN 2	IN 5
7	+12V	+12V
8	IN 1	IN 4
9	IN 3	IN 6

Provide +5 to +24 volts to an input to trigger.



---

*Appendix Pin Assignments*

## ***Field Replacable Parts***

This appendix lists those parts in the NewsroomSuite system that can be replaced. The following table lists each part, including the Thomson Grass Valley order number, and a description of the part. The parts listed in this table are the parts that you can order from Thomson Grass Valley and replace on-site.



Appendix *Field Replacable Parts*

Part Number	Description	Notes
Codecs and Breakout Boxes		
115-0007-xx	Board, Targa 3100-50-OEM Dual DVX-MX50 Codec	50Mbit
115-0006-xx	Board, Targa 3100-25-OEM Dual DVX-MX25 Codec	25Mbit
115-0048-xx	TARGA 3D DVE Option board	3D daughter board; works with DNP V4.5 and greater
116-0975-xx	EQPT, Digital & Analog I/O Interface, Breakout Box	Pro Digital/Analog
116-0973-xx	EQPT, Analog I/O Interface, Breakout Box	Pro Analog
630-0111-xx	Digital/Analog Breakout Box rackmount kit	Purchasable item
620-0072-xx	PWR SPLY,85-265VAC IEC	Power supply for Pro Digital/Analog Breakout Box
Media Drives		
Media Drives for Tower and Vibrint Legacy (Black) Rack Systems		
117-0003-xx	EQPT, 18GB DRIVE OPTION	18Gb Drive (IBM)
117-0056-xx	EQPT, 36GB 68PIN ULTRA	36GB Drive (IBM)
117-0005-xx	EQPT, 72GB DRIVE OPTION	72Gb Drive (Seagate)
119-8027-xx	EQPT, DISK DRIVE 181GB	181Gb Drive (Seagate)
117-0038-xx	EQPT, DISK DRIVE 146GB	146GB Drive
Media Drives for "M" Chassis Rackmount Systems		
119-8168-xx	36G ULTRA320 SCSI 80 PIN	Current 36GB drive for Mango Chassis
117-0026-xx	EQPT, RAID DRIVE 73GB	73GB drive
117-0037-xx	HARD DRIVE, 146GB 80PIN LVD	146GB drive
Included in Rack and Tower Systems		
115-0035-xx	ATI ALL-IN-WONDER RADEON	VGA Card (NewsEdit XT only)

<b>Part Number</b>	<b>Description</b>	<b>Notes</b>
115-0016-xx	SCSI Controller (Adaptec)	LVD SCSI Controller
119-8075-xx	DISK DRIVE 41.6G IDE	System drive for NewsEdit XT and SC, FeedClip, NewsQ
156-9150-xx	IC, SDRAM MODULE 128M 133MHZ 168 PIN	128meg memory
156-9151-xx	IC, UP BX80526C866256E	866Mhz Pentium III
620-0022-xx	PWR SPLY, 90-264VAC 450W	For "M" Chassis Rack systems
620-0028-xx	PWR SPLY, 95-132/180-264VAC 400W ATX	For Vibrint Legacy (Black) Rack System only
117-0059-xx	PC POWER SUPPLY 480W	For Tower System only
119-8154-xx	CD ROM Drive	M-Chassis CDRom works in old towers also
119-8032-xx	EQPT, DRIVE 1.44 Floppy Drive	For Rack System only
119-8034-xx	EQPT, DRIVE 1.44 Floppy Drive TEAC	For Tower System only
117-0002-xx	NewsEdit PC keyboard	4.0 and above systems

Options

115-0012-xx	BRD, INT ERNAL 64-BIT FIBRE ADAPTER	Emulex Fibre channel card
11-50040-xx	EQPT, DUAL CHANNEL FIBRE ADAPTER	Q logic 2 port FC Card (used in NewsShare systems)
116-0972-xx	2-Port RS-422 SMPTE	Control 422 card
11-60983-xx	JL Cooper External Jog shuttle controller	Works with V4.0 and above.
116-0983-xx	EQPT, ES-450 UNIVERSAL Power Supply	For JL Cooper Controller & Fader
115-0048-xx	TARGA 3D DVE OPT	3-D DVE option board for the Targa board



---

*Appendix Field Replacable Parts*

# Index

---

## A

- adding NewsEdit sources 68
  - connections 69
  - general options 69
  - preroll 70
  - record channels 70
  - record handles 70
- ATI Input Adapter
  - connecting directly to system 30
  - connecting to external monitor 31
- audio mixer, connecting to system 34
- audio/video cables, connecting to BOB 32
- auto-marking, FeedClip 93
- automatic Bin monitoring 60
- automation
  - FeedClip playback 97
  - FeedClip recording 94
  - NewsQ 113

## B

- Bin
  - automatic Profile monitoring 60
  - creating 59
  - organizing 58
  - setting up in NewsEdit 58
  - SmartBin
    - creating Media Import 62
    - creating Video Server 61
- Breakout Box
  - connecting audio & video cables 32
  - connecting Pro Analog 30
  - connecting Pro Digital/Analog 30

- connecting to system 30
- description 17

## C

- cabling
  - connecting audio & video to BOB 32
  - connecting audio mixer 34
  - connecting system 28
  - guidelines 26
  - keyboard and mouse 29
  - VTR 32
- certifications 10
- colors, FeedClip 90
- COM port for external controller
  - assigning 39
  - verifying 38
- comparing NewsEdit products 18
- compliances 10
- computer monitor, connecting 29
- computer, part of XT family 16
- configuring FeedClip
  - colors 90
  - controller options 90
  - default settings 82
  - general options 87
  - handles 88
  - NewsQ Pro options 90
  - playback 95
  - record 91
  - scheduler 98
  - send locations 88
  - workgroup 88
- configuring NewsEdit



## Index

---

- controller options 78
- default settings 64
- general options 72
- graphics options 78
- handles 77
- NewsQ Pro options 79
- output options 74
- record options 73
- send locations 75
- sharing media files 57
- timeline options 77
- workgroup 74
- configuring NewsEdit video sources
  - connections 69
  - general options 69
  - preroll 70
  - record channels 70
  - record handles 70
- configuring NewsQ
  - default settings 102
  - general options 105
  - handles 108
  - NewsQ Pro options 109
  - output options 106
  - playback channel 110
  - send locations 107
  - workgroup 106
- configuring NewsroomSuite
  - host table 56
  - NewsEdit Bin 58
  - sharing media files 57
- connecting
  - external controller 37
  - keyboard and mouse cables 29

- network cables
  - Ethernet 31
  - Fibre Channel 31
- power cable 29
- system cables 28
- connections, setting for new source 69
- controller options
  - FeedClip 90
  - NewsEdit 78
- creating new bin 59
- criteria, environmental 13

## D

- default configuration settings
  - FeedClip 82
  - NewsEdit 64
  - NewsQ 102
- DNP workgroup layout 21

## E

- Effects Controller, connecting to
  - NewsEdit 37
- environmental
  - criteria 13
  - requirements 25
- Ethernet
  - connecting cables 31
  - networking requirements 25
- external controller
  - assigning COM port 39
  - connecting to NewsEdit 37
  - description 36
  - verifying COM port 38



## F

- Fibre Channel
  - connecting cables 31
  - network requirements 25
- files, sharing 57

## G

- general options
  - FeedClip 87
  - NewsEdit 72
  - NewsQ 105
  - setting for new source 69
- Genlock
  - FeedClip 97
  - NewsQ 113
- GPIO, NewsQ 111
- graphics options, NewsEdit 78
- guidelines
  - cabling system 26
  - safety 7

## H

- handles
  - FeedClip 88
  - NewsEdit 77
  - NewsQ 108
- host table, setting up 56

## I

- installing software
  - NewsroomSuite 50
    - local storage system 51
    - shared storage system 52
  - Profile 48
  - software license number 54

## J

- Jog/Shuttle Controller, connecting to NewsEdit 37

## K

- keyboard, used with NewsroomSuite 17

## L

- launching applications 46
- layout, workgroup 21
- license number for software 54
- local storage software installation 51

## M

- Media Import SmartBin, creating 62
- Motorized Fader Controller, connecting to NewsEdit 37



---

*Index*

## **N**

network cables, connecting 31

networking requirements 25

    Ethernet Switch 25

    Fibre Channel 25

NewsEdit

    comparing products 18

    connecting external controller 37

    external controllers 36

    setting up Bin 58

NewsEdit LT, description of 19

NewsEdit SC, description of 19

NewsQ Pro options

    FeedClip 90

    NewsEdit 79

    NewsQ 109

NewsroomSuite

    installing software 50

    launching applications 46

    storage options 20

## **O**

options

    FeedClip

        colors 90

        controller 90

        default settings 82

        general 87

        handles 88

        NewsQ Pro 90

        playback 95

        record 91

        scheduler 98

        send locations 88

    workgroup 88

NewsEdit

    controller 78

    default settings 64

    general 72

    graphics 78

    handles 77

    NewsQ Pro 79

    output 74

    record 73

    send locations 75

    timeline 77

    workgroup 74

NewsQ

    default settings 102

    general 105

    handles 108

    NewsQ Pro 109

    output 106

    playback channel 110

    send locations 107

    workgroup 106

    sharing media files 57

options for storage 20

organizing Bin 58

output options

    NewsEdit 74

    NewsQ 106

**P**

- playback channel settings, NewsQ
  - automation 113
  - Genlock 113
  - GPIO 111
- playback settings, FeedClip
  - automation 97
  - general 96
  - Genlock 97
  - output 97
  - slow motion 96
- power cable, connecting 29
- power requirements 24
- powering up system 42
  - rackmount system 42
  - standalone system 42
- precautions 7, 8
- preroll, setting for new source 70
- Pro Analog Breakout Box, connecting 30
- Pro Digital/Analog Breakout Box, connecting 30
- product support 5
- Profile
  - automatic monitoring, NewsEdit 60
  - installing software 48

**R**

- rackmount system, powering on 42
- record channels, setting for new source 70
- record handles, setting for new source 70
- record options, NewsEdit 73
- record settings, FeedClip

- audio channel 94
- auto-mark 93
- automation 94
- general 92
- input 93
- output 93
- requirements
  - environmental 25
  - networking 25
  - power 24
  - site 24
  - synchronization 25

**S**

- safety guidelines 7
- scheduler settings, FeedClip
  - color 99
  - general 99
- send locations
  - FeedClip 88
  - NewsEdit 75
  - NewsQ 107
- service safety 9
- setting up
  - FeedClip, See configuring FeedClip
  - host table 56
  - NewsEdit Bin 58
  - NewsEdit, See configuring NewsEdit
  - NewsQ, See configuring NewsQ
  - sharing media files 57
- shared storage software installation 52
- sharing media files 57
- site requirements 24



---

## Index

- slow motion, FeedClip 96
  - SmartBin
    - Media Import 62
    - Video Server 61
  - software license number, obtaining 54
  - software, installing
    - local storage 51
    - NewsroomSuite 50
    - Profile 48
    - shared storage 52
  - software, NewsroomSuite 18
  - sources, in NewsEdit
    - See video sources, NewsEdit
  - standalone system, powering on 42
  - storage options 20
  - support 5
  - synchronization requirements 25
  - system cables, connecting 28
    - ATI Input Adapter 30
      - connecting directly to system 30
      - using external monitor 31
    - Breakout Box 30
    - computer monitor 29
    - network cables 31
    - power cable 29
    - VTR 32
  - system self test
    - description 43
    - running manually 44
    - troubleshooting 45
  - system, powering on 42
- T**
- technical support 5
  - timeline options, NewsEdit 77
- V**
- Video Server SmartBin, creating 61
  - video sources, NewsEdit
    - adding 68
    - connections 69
    - general options 69
    - preroll 70
    - record channels 70
    - record handles 70
  - VTR, connecting to system 32
- W**
- workgroup
    - FeedClip 88
    - layout 21
    - NewsEdit 74
    - NewsQ 106
- X**
- XT components
    - additional components 19
    - Breakout Box 17
    - computer 16
    - keyboard 17
    - monitor 17
    - mouse 17
    - software 18
    - storage options 20