

NewsroomSuite

DIGITAL NEWS PRODUCTION TOOLS

Installation and Configuration Guide

SOFTWARE VERSION 5.5

071829401
NOVEMBER 2005

the most watched worldwide

CERTIFICATE

Number: 510057.001

The Quality System of:

Thomson Broadcast & Media Solutions

TBMS
400 Providence Mine Road
Nevada City, CA 95945

TBMS
Weiterstadt, Germany
Brunnenweg 9
D-64331 Weiterstadt, Germany

TBMS
15655 SW Greystone Ct.
Beaverton, OR 97006

TBMS
Nederland B.V.
4800 RP BREDA
The Netherlands

TBMS/Nextream
Rennes, France
Rue du Clos Courtel
Cesson-Sevigne, Cedex
France

TBMS
17 rue du Petit Albi-BP 8244
95801 Cergy Pontoise
Cergy, France

TBMS
10 Presidential Way, 3rd Floor, Suite 300
Woburn, MA 08101

TBMS
2300 South Decker Lake Blvd.
Salt Lake City, UT 84119

TBMS - PCB
Rennes, France
Rue du Clos Courtel
Cesson-Sevigne, Cedex
France

TBMS/Nextream
Technopole Brest Iroise
CS 73808
29238 Brest Cedex 3
France

Including its implementation, meets the requirements of the standard:

ISO 9001:2000

Scope: The design, manufacture and support of video hardware and software products and related systems.

This Certificate is valid until:	June 14, 2006
Revision Date:	September 9, 2003
Renewal Date:	June 14, 2003
Issued for the first time:	June 14, 2000



H. Pierre Sallé
President
KEMA-Registered Quality, Inc.

The method of operation for quality certification is defined in the KRQ General Terms and Conditions for Quality Certification. Integral publication of this certificate and adjoining reports is allowed.

NewsroomSuite

DIGITAL NEWS PRODUCTION TOOLS

Installation and Configuration Guide



SOFTWARE VERSION 5.5

071829401
NOVEMBER 2005

the most watched worldwide

Copyright

Copyright © 2005 Thomson Broadcast and Media Solutions, Inc. All rights reserved. Printed in the United States of America.

This document may not be copied in whole or in part, or otherwise reproduced except as specifically permitted under U.S. copyright law, without the prior written consent of Thomson Broadcast and Media Solutions, Inc., P.O. Box 59900, Nevada City, California 95959-7900

Trademarks

ContentShare, FeedClip, Grass Valley, K2, M-Series, Media Manager, NewsEdit, NewsQ, NewsShare, and Profile are either registered trademarks or trademarks of Thomson Broadcast and Media Solutions, Inc. in the United States and/or other countries. Other trademarks used in this document are either registered trademarks or trademarks of the manufacturers or vendors of the associated products. Thomson Broadcast and Media Solutions, Inc. products are covered by U.S. and foreign patents, issued and pending. Additional information regarding Thomson Broadcast and Media Solution, Inc.'s trademarks and other proprietary rights may be found at www.thomsongrassvalleygroup.com.

Disclaimer

Product options and specifications subject to change without notice. The information in this manual is furnished for informational use only, is subject to change without notice, and should not be construed as a commitment by Thomson Broadcast and Media Solutions, Inc. Thomson Broadcast and Media Solutions, Inc. assumes no responsibility or liability for any errors or inaccuracies that may appear in this publication.

U.S. Government Restricted Rights Legend

Use, duplication, or disclosure by the United States Government is subject to restrictions as set forth in subparagraph (c)(1)(ii) of the Rights in Technical Data and Computer Software clause at DFARS 252.277-7013 or in subparagraph c(1) and (2) of the Commercial Computer Software Restricted Rights clause at FAR 52.227-19, as applicable. Manufacturer is Thomson Broadcast and Media Solutions, Inc., P.O. Box 59900, Nevada City, California 95959-7900 U.S.A.

Revision Status

Rev Date	Description
March 28, 2005	Initial release, part number 071-8294-00
November 21, 2005	Release 071-8294-01 for Software Version 5.5

Contents

Preface

Chapter 1

Introducing the NewsroomSuite System

The XT Family Components	18
Computer	18
Breakout Box	19
Keyboard and Mouse	19
Monitor	19
Software	20
Comparing the NewsEdit Products	20
NewsEdit SC	21
NewsEdit LT	21
Other Components	22
Storage Options	23
Digital News Production Workgroup Layout	24

Chapter 2

Setting Up the Hardware

Site Requirements	26
Power Requirements	26
Synchronization Requirements	27
Environmental Requirements	27
Networking Requirements	27
Fibre Channel	27
Ethernet Switch	27
Cabling Guidelines	28
Connecting System Cables	30
Connecting the Keyboard and Mouse	31
Connecting the Computer Monitor	31
Connecting the Power Cable	31
Connecting the Breakout Box	32
Pro Digital/Analog Breakout Box	32
Pro Analog Breakout Box	32
Connecting the ATI Input Adapter	32
Connecting the Breakout Box Directly	32
Using an External Monitor	33
Connecting Network Cables	33
Ethernet Connection	33
Fibre Channel Connection	33
Connecting a Video Tape Recorder	34
Connecting Audio and Video Cables to the Breakout Box	34
Connecting an Audio Mixer	36



Contents

Chapter 3	Installing the NewsEdit SC Video Board & Breakout Box (Optional)	
	Installing the XenaSD Board and Breakout Box	38
	Installing the XenaSD Driver and Control Panel	39
	Installing the XenaSD Driver	39
	Installing the XenaSD Control Panel	39
	Enabling SDI Output on NewsEdit SC	40
Chapter 4	Connecting External Controllers to NewsEdit	
	Introducing the External Controllers	42
	Connecting an External Controller to the NewsEdit Workstation	43
	Connecting the Jog/Shuttle Controller	43
	Connecting the Motorized Fader or the Effects Controller	43
	Verifying the COM Port	44
	Assigning a COM Port for the Controller	45
Chapter 5	Turning On the NewsroomSuite Computer	
	Powering Up the System	48
	Standalone System	48
	Rackmount System	48
	Understanding the System Self Test	49
	Running the System Self Test Manually	50
	Troubleshooting the System Self Test	51
	Launching the NewsroomSuite Applications	52
Chapter 6	Installing Software	
	Installing Profile Software	54
	Installing the NewsroomSuite Software	56
	Local Storage System	57
	Shared Storage System	58
	Configuring the Disk Volume	59
	Obtaining a Software License Number	60
Chapter 7	SmartBins	
	Understanding SmartBins	62
	SmartBins on an Open SAN System	62
	SmartBin Folder Synchronization	62
	Updating the Databases	64
	SmartBins on a NAS or K2 System	65
	Video Server SmartBins	65
	Media Import SmartBins	66
	Installing the Software	67

Mounting the NAS Volume	67
Configuring the SmartBins Server on a K2 Network	68
Installing the Profile Software	68
Installing the SmartBins Service	69
Obtaining a Software License Number	70
Configuring SmartBins Service on a NAS or K2 System	71
Creating SmartBins in NewsEdit	73
Creating a Video Server SmartBin	74
Creating a Media Import SmartBin	75

Chapter 8 **Installing the NewsFTP Service**

Chapter 9 **Configuring Your System**

Setting Up the Host Table	80
Setting Up Media Files for Sharing	81
Setting Up the NewsEdit Bin	82
Organizing Your Bins	82
Creating a New Bin	83

Chapter 10 **Configuring NewsEdit Options**

Default Configuration Settings	86
Adding Video Sources to NewsEdit	90
Setting General Source Options	91
Setting Connections	91
Setting Record Channels	92
Setting Preroll	92
Setting Record Handles	92
Setting Options for Your Newsroom	93
Setting General Options	94
Configuring Video Settings	95
Setting Output Options (NewsEdit XT only)	96
Setting Up a Workgroup	96
Setting Up Send Locations	97
Setting Handles	101
Setting Timeline Options	102
Setting Graphics Options	102
Setting Controller Options	103
Setting NewsQ Pro Options	103



Contents

Chapter 11

Configuring FeedClip Options

Default Configuration Settings	106
Setting Options for Your Newsroom	110
Setting General Options	111
Setting Handles	112
Setting Up Your Workgroup	112
Setting Up Send Locations	112
Setting Colors	116
Setting Controller Options	116
Setting NewsQ Pro Options	116
Configuring Record Settings	117
General Settings	118
Auto-Marking Settings	119
Input Settings	119
Output Settings	119
Audio Channel Settings	120
Automation Settings	120
Configuring Playback Settings	121
General Settings	122
Slow Motion Settings	122
Genlock Settings	123
Output Settings	123
Automation Settings	123
Configuring Scheduler Settings	124
General Settings	125
Color Settings	125

Chapter 12

Configuring NewsQ Options

Default Configuration Settings	128
Setting Options for Your Newsroom	130
Setting General Options	131
Setting Output Options	132
Setting Up a Workgroup	132
Setting Up Send Locations	133
Setting Handles	137
Setting NewsQ Pro Options	137
Configuring Playback Channel Settings	138
Configuring GPIO Settings	139
Configuring Genlock Settings	141
Configuring Automation Settings	141

Appendix A Pin Assignments 143

Appendix B Field Replacable Parts 147

Index



Contents

Grass Valley Product Support

To get technical assistance, check on the status of problems, or report new problems, contact Grass Valley Product Support via e-mail, the Web, or by phone or fax.

Web Technical Support

To access support information on the Web, visit the product support Web page on the Grass Valley Web site. You can download software or find solutions to problems by searching our Frequently Asked Questions (FAQ) database.

World Wide Web: <http://www.thomsongrassvalley.com/support/>
Technical Support E-mail Address: gvgtechsupport@thomson.net

Phone Support

Use the following information to contact product support by phone during business hours. Afterhours phone support is available for warranty and contract customers.

United States	(800) 547-8949 (Toll Free)	France	+33 (1) 34 20 77 77
Latin America	(800) 547-8949 (Toll Free)	Germany	+49 6155 870 606
Eastern Europe	+49 6155 870 606	Greece	+33 (1) 34 20 77 77
Southern Europe	+33 (1) 34 20 77 77	Hong Kong	+852 2531 3058
Middle East	+33 (1) 34 20 77 77	Italy	+39 06 8720351
Australia	+61 1300 721 495	Netherlands	+31 35 6238421
Belgium	+32 2 3349031	Poland	+49 6155 870 606
Brazil	+55 11 5509 3440	Russia	+49 6155 870 606
Canada	(800) 547-8949 (Toll Free)	Singapore	+656379 1390
China	+86 106615 9450	Spain	+ 34 91 512 03 50
Denmark	+45 45968800	Sweden	+46 87680705
Dubai	+ 971 4 299 64 40	Switzerland	+41 (1) 487 80 02
Finland	+35 9 68284600	UK	+44 870 903 2022



Preface

Authorized Support Representative

A local authorized support representative may be available in your country. To locate the support representative for your country, visit the product support Web page on the Grass Valley Web site.

Profile Users Group

You can connect with other Profile XP Media Platform users to ask questions or share advice, tips, and hints. Send e-mail to profile-users@thomson.net to join the community and benefit from the experience of others.

Safety Summaries

General Safety Summary

Review the following safety precautions to avoid injury and prevent damage to this product or any products connected to it.

Only qualified personnel should perform service procedures.

While using this product, you may need to access other parts of the system. Read the *General Safety Summary* in other system manuals for warnings and cautions related to operating the system.

Review all system operator manuals, including manuals in electronic format on the system hard drive.

Injury Precautions

Use Proper Power Cord

To avoid fire hazard, use only the power cord specified for this product.

Ground the Product

This product is grounded through the grounding conductor of the power cord. To avoid electric shock, the grounding conductor must be connected to earth ground. Before making connections to the input or output terminals of the product, ensure that the product is properly grounded.

Do Not Operate Without Covers

To avoid electric shock or fire hazard, do not operate this product with covers or panels removed.

Do Not Operate in Wet/Damp Conditions

To avoid electric shock, do not operate this product in wet or damp conditions.

Do Not Operate in an Explosive Atmosphere

To avoid injury or fire hazard, do not operate this product in an explosive atmosphere.

Avoid Exposed Circuitry

To avoid injury, remove jewelry such as rings, watches, and other metallic objects. Do not touch exposed connections and components when power is present.



Product Damage Precautions

Use Proper Power Source	Do not operate this product from a power source that applies more than the voltage specified.
Provide Proper Ventilation	To prevent product overheating, provide proper ventilation.
Do Not Operate With Suspected Failures	If you suspect there is damage to this product, have it inspected by qualified service personnel.
Battery Replacement	To avoid damage, replace only with the same or equivalent type recommended by the circuit board manufacturer. Dispose of used battery according to the circuit board manufacturer's instructions.

Safety Terms and Symbols

Terms in This Manual



These terms may appear in this and other product manuals:

WARNING: Warning statements identify conditions or practices that can result in personal injury or loss of life.



CAUTION: Caution statements identify conditions or practices that can result in damage to the equipment or other property.

Terms on the Product

These terms may appear on the product:

DANGER indicates a personal injury hazard immediately accessible as one reads the marking.

WARNING indicates a personal injury hazard not immediately accessible as you read the marking.

CAUTION indicates a hazard to property including the product.

Symbols on the Product



The following symbols may appear on the product:

DANGER high voltage



Protective ground (earth) terminal



ATTENTION – refer to manual

Service Safety Summary

Do Not Service Alone

Do not perform internal service or adjustment of this product unless another person capable of rendering first aid and resuscitation is present.

No Power Switch

To avoid electric shock, disconnect the main power by means of the power cord. The power cord is the main power disconnect. Ensure that the power cord is easily accessible at the rear of the product or at the power receptacle.

Use Care When Servicing With Power On

Dangerous voltages or currents may exist in this product. Disconnect power and remove battery (if applicable) before removing protective panels, soldering, or replacing components.

To avoid electric shock, do not touch exposed connections.



Certifications and Compliances

Canadian Certified Power Cords

Canadian approval includes the products and power cords appropriate for use in the North America power network. All other power cords supplied are approved for the country of use.

FCC Emission Control

This equipment has been tested and found to comply with the limits for a Class A digital device, pursuant to Part 15 of the FCC Rules. These limits are designed to provide reasonable protection against harmful interference when the equipment is operated in a commercial environment. This equipment generates, uses, and can radiate radio frequency energy and, if not installed and used in accordance with the instruction manual, may cause harmful interference to radio communications. Operation of this equipment in a residential area is likely to cause harmful interference in which case the user will be required to correct the interference at his own expense. Changes or modifications not expressly approved by Grass Valley can affect emission compliance and could void the user's authority to operate this equipment.

Canadian EMC Notice of Compliance

This digital apparatus does not exceed the Class A limits for radio noise emissions from digital apparatus set out in the Radio Interference Regulations of the Canadian Department of Communications.

Le présent appareil numérique n'émet pas de bruits radioélectriques dépassant les limites applicables aux appareils numériques de la classe A prescrites dans le Règlement sur le brouillage radioélectrique édicté par le ministère des Communications du Canada.

Canadian Certified AC Adapter

Canadian approval includes the AC adapters appropriate for use in the North America power network. All other AC adapters supplied are approved for the country of use.

EN55022 Class A Warning

For products that comply with Class A. In a domestic environment this product may cause radio interference in which case the user may be required to take adequate measures.

Laser Compliance

Laser Safety Requirements

The device used in this product is a Class 1 certified laser product. Operating this product outside specifications or altering its original design may result in hazardous radiation exposure, and may be considered an act of modifying or new manufacturing of a laser product under U.S. regulations contained in 21CFR Chapter 1, subchapter J or CENELEC regulations in HD 482 S1. People performing such an act are required by law to recertify and reidentify this product in accordance with provisions of 21CFR subchapter J for distribution within the U.S.A., and in accordance with CENELEC HD 482 S1 for distribution within countries using the IEC 825 standard.

Laser Safety

Laser safety in the United States is regulated by the Center for Devices and Radiological Health (CDRH). The laser safety regulations are published in the “Laser Product Performance Standard,” Code of Federal Regulation (CFR), Title 21, Subchapter J.

The International Electrotechnical Commission (IEC) Standard 825, “Radiation of Laser Products, Equipment Classification, Requirements and User’s Guide,” governs laser products outside the United States. Europe and member nations of the European Free Trade Association fall under the jurisdiction of the Comité Européen de Normalization Electrotechnique (CENELEC).

FCC Emission Limits

This device complies with Part 15 of the FCC Rules. Operation is subject to the following two conditions: (1) This device may not cause harmful interference, and (2) this device must accept any interference received, including interference that may cause undesirable operation.



Certification

Category	Standard
Safety	<i>Designed/tested for compliance with:</i> ANSI/UL60950-2000 - Safety of Information Technology Equipment IEC 60950 - Safety of Information Technology Equipment (3rd edition, 1999) CAN/CSA C22.2, No. 60950-00 - Safety of Information Technology Equipment EN60950:2000 - Safety of Information Technology Equipment (3rd edition)

Environmental Criteria

The following table lists the environmental criteria for the NewsroomSuite system.

Characteristics	Description
Operating Temperature	<i>Requirement:</i> 10° to 40°C
Storage Temperature	<i>Requirement:</i> -40° to 65°C
Operating Altitude	<i>Requirement:</i> To 10,000 feet <i>Supplemental Data:</i> IEC 60950 compliant to 2000 meters
Storage Altitude	<i>Requirement:</i> To 40,000 feet
Mechanical Shock	<i>Supplemental Data:</i> Class 5 (30G) Grass Valley 001131500
Random Vibration	<i>Requirement:</i> Operational: Class 6 Thomson Grass Valley 001131500 <i>Requirement:</i> Non-Operational: Class 5 Thomson Grass Valley 001131500
Transportation	<i>Requirement:</i> Thomson Grass Valley 001131500
Equipment Type	<i>Supplemental Data:</i> Information Technology
Equipment Class	<i>Supplemental Data:</i> Class 1
Installation Category	<i>Requirement:</i> Category II Local level mains, appliances, portable equipment, etc.
Pollution Degree	<i>Requirement:</i> Level 2 operating environment, indoor use only.
Relative Humidity	<i>Requirement:</i> Operating 80% from +30° to +40°C Non-Operating 90% from +30° to +60°C Do not operate with visible moisture on the circuit boards



Preface

Introducing the NewsroomSuite System

The NewsroomSuite system is a combination of hardware and software that provides you with the tools necessary to create and manage content for your news broadcasts.

The Digital News Production products include the XT family, NewsEdit SC, and NewsEdit LT. The XT family, which includes NewsEdit, FeedClip, and NewsQ, provides the most powerful system for news editing. NewsEdit SC provides editing capabilities in a software codec system, and NewsEdit LT provides portable editing capability in the field.

This chapter discusses:

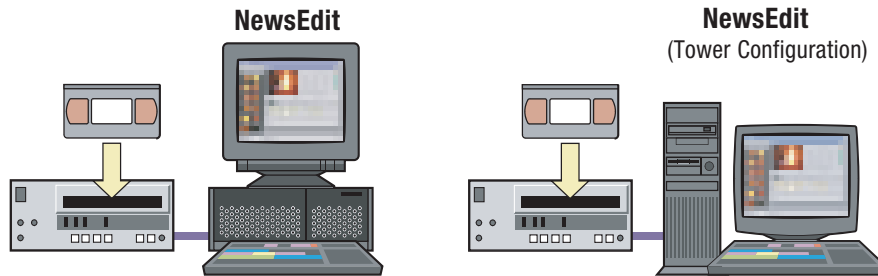
- The XT family components
- How the NewsEdit products compare
- NewsEdit SC
- NewsEdit LT
- Other components
- Storage Options
- The Digital News Production workgroup layout



The XT Family Components

The XT family consists of several components comprising a digital news production system. All of the NewsroomSuite software applications, NewsEdit XT, FeedClip, and NewsQ run on the XT platform.

Computer

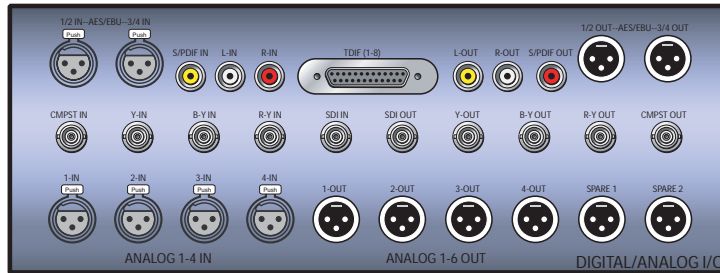


The XT computer is a personal computer housing these components:

- One of 4 Targa boards to provide video compression: DV25 (with MPEG50); DV50; IMX; or Dual DV50 and IMX.
- VGA card
- RS-422 controller card
- Hard drive with NTFS format for operating system
- 3.5 inch floppy drive; reads and writes to 1.44 MB diskettes
- CD-ROM reader; required for installing software
- Media drives (36, 72, or 146 GB)
- Built-in TCP/IP compatible Ethernet LAN connection
- Windows2000 operating system
- Two serial ports
- Optional Fibre Channel or Gigabit Ethernet network cards

The XT system is available in either a standalone or rackmount version.

Breakout Box

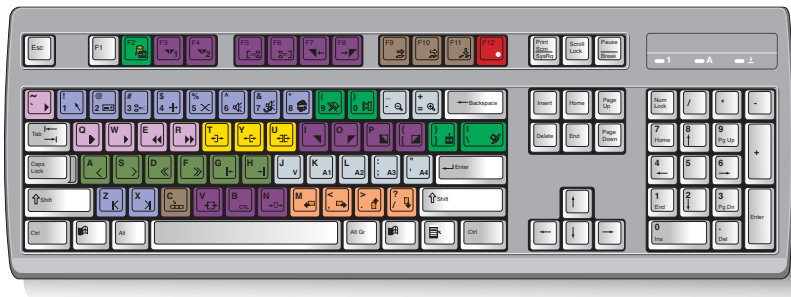


Pro Digital/Analog Breakout Box

The NewsroomSuite computer comes with a Breakout Box (BOB) to provide video and audio input and output. The BOB connects to the NewsroomSuite computer's Targa board. All video and audio inputs and outputs to be used with NewsEdit, FeedClip, and NewsQ plug into the BOB.

There are 2 different types of Breakout Boxes: Pro Analog and Pro Digital/Analog.

Keyboard and Mouse



The XT system's keyboard has color-coded keys that allow you to see editing commands at a glance. Keys correspond to NewsEdit, FeedClip, and NewsQ functions. The NewsroomSuite system also includes a standard PS/2 mouse.

Monitor

You can have one or two computer monitors attached to your NewsroomSuite system. In a dual-monitor configuration, one monitor usually displays multiple bins, while the rest of the NewsroomSuite applications display on the other monitor.



Software

NewsroomSuite software consists of the following Digital News Production applications:

- NewsEdit—Nonlinear editor
- FeedClip—Feed capture system, designed for live events and sporting contests
- NewsQ—Manual playback system

Comparing the NewsEdit Products

This table shows how each of the NewsEdit products, XT, SC, and LT compare in their features:

	NewsEdit XT	NewsEdit SC	NewsEdit LT
Codec	Hardware Targa 3K	Software	Software
Platform	Tower or Rack	Tower or Rack	Laptop
Media Formats NTSC	DV, DVCAM, DVCPRO, MPEG, IMX	DV, DVCAM, DVCPRO, MPEG (playback only)	DV, DVCAM, DVCPRO, MPEG (playback only)
Media Formats PAL	DV, DVCAM, DVCPRO, MPEG, IMX	DV, DVCAM, DVCPRO	DV, DVCAM, DVCPRO
Max Data Rate	50 Mb/s	25 Mb/s	25 Mb/s
Breakout Box Required	Yes	No (IEEE 1394 Firewire)	No (IEEE 1394 Firewire)
Ethernet Workgroup	Yes	Yes	Yes
Fibre Channel Option	Yes	Yes (no for SCE Option)	No
GXF Transfer Support	Yes	Yes	Yes
Color Correction and 2D Support	Yes	Yes	Yes
3D Support	Yes	No	No
Titling Options	Yes	Yes	Yes
Cuts and Transitions	Yes	Yes	Yes

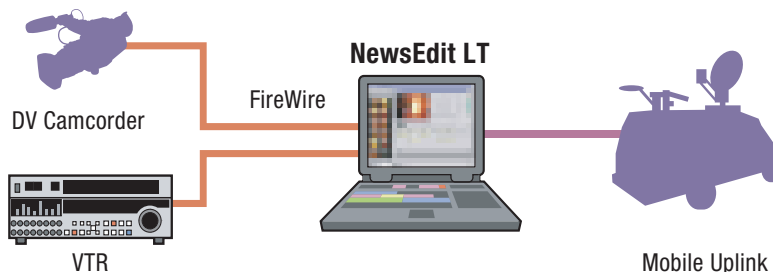
NewsEdit SC

The NewsEdit SC system is the same personal computer as the XT platform computer, except it has no video compression board; video compression is accomplished with software. Available with DV25 video compression (and MPEG compression for playback), it also includes a 1394 card for deck control and audio/visual interfacing.

NewsEdit SC uses the Windows XP operating system.

Optionally, you can add an AJA XenaSD video compression board and Breakout Box to provide video output to an external broadcast VGA monitor. When the AJA board is present, the video output is enabled by default in the playback channel, the play to tape channel, and the Bin trimmer. An additional button on the NewsEdit interface lets you enable this mode, available in most of the Timeline Tools.

NewsEdit LT



Designed for field editing, the NewsEdit LT system is a laptop computer with DV25 video compression accomplished with software, just like the NewsEdit SC system. It also includes a 1394 network card and 60 GB of internal storage.

NewsEdit LT comes with a color-coded keyboard, like NewsEdit XT, letting you perform editing functions quickly.

NewsEdit LT uses the Windows XP operating system.



Other Components

There are several additional components you may wish to use with your NewsroomSuite system:

- XRE Server, used for these services:
 - SmartBin Service (see the *SmartBins Instruction Guide*, part number 071-8370)
 - Domain Controller for Open SAN security (see the *Open SAN Security Instruction Guide*, part number 071-8369)
- Video Tape Recorder (VTR)—Allows you to use footage from video tapes.
- External monitor—Displays standard NTSC or PAL output.
- Audio mixer, such as Mackie 1402VLZPro—Allows greater control of audio input.
- External controllers—The Jog/Shuttle Controller, Motorized Fader Controller, and Effects Controller (available from Thomson Grass Valley) allow you to control the NewsroomSuite applications. See Chapter 4, “Connecting External Controllers to NewsEdit” for more information.
- Speakers

Storage Options

With the NewsroomSuite system, you have four options for storing news files:

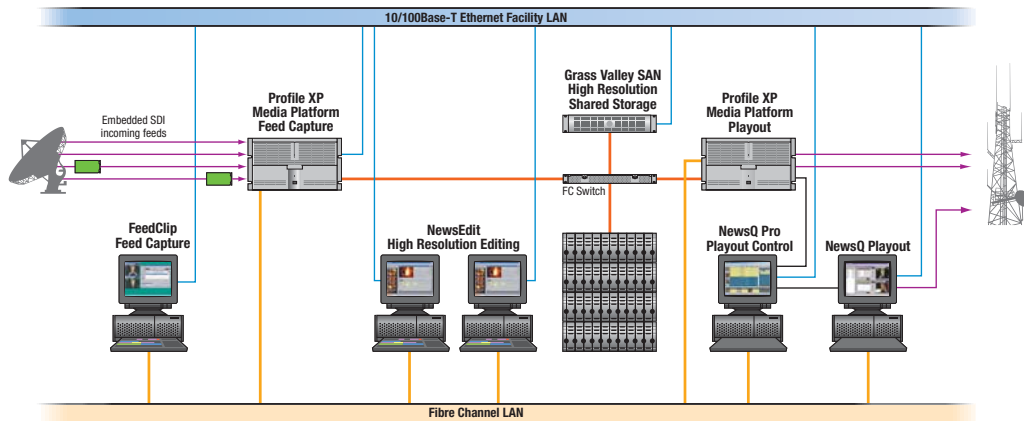
- Local storage on the NewsroomSuite computer
- Open SAN network, a shared storage network consisting of these components:
 - Profile Media Server(s), for encoding and playing out broadcast-quality video
 - RAID arrays provide storage for all media
 - File System Manager (FSM), one or two servers which control access to the RAID arrays and host asset databases
- Network Attached Storage (NAS) network, a shared storage network consisting of these components:
 - NAS Server to manage the network file systems
 - RAID arrays provide storage for all media
 - Database System Manager (DSM), which hosts the News database and optionally the SmartBin Service
- K2 network, a shared storage network consisting of these components:
 - K2 Media Server to manage the network file systems
 - RAID arrays provide storage for all media
 - Gigabit Ethernet Switch connecting the K2 Media Server and the NewsEdit client machines
 - Control point PC, which hosts the K2 Configuration application used to configure the storage system
 - Database System Manager (DSM), which hosts the News database and optionally the SmartBin Service

For a detailed discussion of the shared storage network options available with NewsEdit, see the *NewsShare Technical Reference Guide* (part number 071-8371).



Digital News Production Workgroup Layout

This illustration shows a typical setup for a NewsroomSuite computer within the Digital News Production workgroup.



Setting Up the Hardware

Once you understand the site requirements and cabling guidelines, you can set up your NewsroomSuite computer system and connect the cables.

This chapter discusses:

- Site requirements
- Guidelines for cabling your NewsroomSuite system
- Connecting system cables
- Connecting network cables
- Connecting a Video Tape Recorder
- Connecting audio and video to the Breakout Box
- Connecting an audio mixer



Site Requirements

This section details site requirements for your NewsroomSuite system.

Power Requirements

It is highly recommended that you use a surge protector and an uninterruptible power supply (UPS) with your system. There must be a 20 A, 110 to 120 V alternating current, 60 Hz or 10 A, 220 to 224 V alternating current, 50 Hz circuit breaker and an isolated ground.

Storage upgrades may require additional electrical service. Consider the equipment nameplate ratings and consult your Thomson Grass Valley representative.

The NewsroomSuite system is designed to work with a single-phase (three-wire) power cord with a grounded neutral conductor. To reduce the risk of electric shock, always plug the cord into a powered off grounded power outlet.

For best performance, keep all system power connections on the same power feed distribution panel. Do not connect any other equipment to the same outlet that is powering the NewsroomSuite equipment.

This table lists the power requirements for the system components.

Component	Voltage	Frequency	Power
NewsroomSuite Computer	120/240 VAC	50/60	300 Watts
Pro Analog Breakout Box	N/A	N/A	N/A
Pro Digital/Analog Breakout Box	120/240 VAC		1.5 Amps
17" Monitor (optional; spec based on Viewsonic A70)	100/240 VAC	50/60	2 Amps
Mackie 1402VLZ Pro (optional)	120/240 VAC	50/60	25 W
Fostex Speakers (optional)	120 VAC		5 W
Brocade Silkworm 2400 (optional 8 port)	100/240 VAC	50/60	1.5 Amps
Brocade Silkworm 2800 (optional 16 port)	100/240 VAC	50/60	1.5 Amps
Netgear FS516 Ethernet Switch (optional 16 port)	100/240 VAC	50/60	29 W

Synchronization Requirements

You must have a stable video reference source to synchronize the system if you are playing directly to air. The system needs no reference if the output is not required to be genlocked. The Pro Analog and Pro Digital/Analog Breakout Boxes each have Reference In connections.

Environmental Requirements

This table lists the specifications for a standard broadcast environment.

Condition	Range
Operating temperature	50 to 75 degrees Fahrenheit
Storage temperature	0 to 140 degrees Fahrenheit
Relative humidity	20% to 80%
Altitude	0 to 6000 ft. (0 to 1829 m)

Networking Requirements

Your system is designed to work over industry-standard local area networks (LANs) and wide area networks (WANs) using standard TCP/IP networking protocols. Install all possible network cabling before the equipment arrives and make note of the network IP addresses that reside within the network.

Fibre Channel

The NewsroomSuite system transfers files to the playback server through a Fibre Channel switch connection. Typically, fibre-optic cable is run along or inside facilities ductwork using 62.5-micron termination connectors, SC type for the Emulex Fibre Channel card and LC type for the Q-Logic Fibre Channel card. Contact Thomson Grass Valley for sources for custom or off-the-shelf length cables.

Ethernet Switch

The Ethernet switch routes data between all NewsroomSuite systems, the playout server, and newsroom systems. A 100-BaseT Ethernet switch is required to connect network devices within NewsroomSuite production workgroups. A Gigabit Ethernet switch is available and used for the Network Attached Storage product. Status LEDs on the hub show network activity.



Cabling Guidelines

Creating a floor plan of your facility with user and equipment locations marked will help you determine necessary cable lengths. Follow these guidelines to install your NewsroomSuite system:

- Use all cables delivered with your NewsroomSuite system. All supplied cables are tested and qualified for Thomson Grass Valley broadcast system configurations.
- The monitors should be within 6 feet of the NewsroomSuite computer. You may use VGA cable extensions, though video images degrade with increased length.
- The keyboard and mouse should be within 6 feet of the NewsroomSuite computer. Use keyboard and mouse extensions only if necessary.
- The Breakout Box should be within 6 feet of the NewsroomSuite computer.
- The VTR should be within 15 feet of the NewsroomSuite computer for a standard RS-422 length cable. An extension cable can be added for greater distances.
- A fibre-channel switch should be within 1650 feet (500 meters) from the NewsroomSuite computer when using a standard Multimode cable.

These cables ship with your NewsroomSuite system:

Cable Description	Length	Connects
Standard power cords	Up to 6 ft. (1.8m)	All physical hardware with designated power supply
Keyboard cable	Up to 6 ft. (1.8m) (Quality PS/2 extender cables can be used)	Keyboard to NewsroomSuite computer
Mouse cable	Up to 6 ft. (1.8m) (Quality PS/2 extender cables can be used)	Mouse to NewsroomSuite computer
Digital tether data cable	6 ft. (1.8m)	Digital/Analog Breakout Box to video board on NewsroomSuite computer
Purple ATI Input Adapter	5 ft. (1.8m)	ATI to mini-DIN connection on graphics card on NewsroomSuite computer

Cabling Guidelines

Cable Description	Length	Connects
S-Video cable	6 ft. (1.8m)	S-Video connection on Analog Breakout Box to ATI Input Adapter
ATI Output Adapter Octopus cable	6 inches (approximately)	A/V OUT connection on VGA board on NewsroomSuite computer to a single or dual monitor

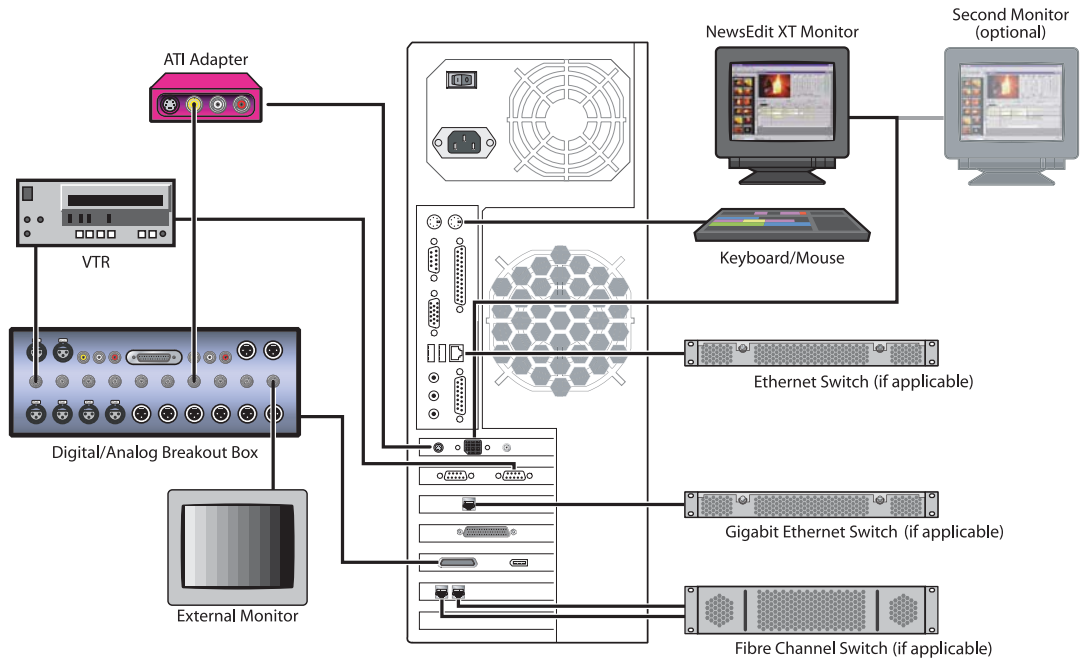
You need to supply these cables for your NewsroomSuite system:

Cable Description	Length	Connects
Fibre optic	62.5-micron, SC or LC Multimode type, up to 1650 ft. (500m)	Fibre channel switch to server fibre port
RJ-45 Cat5 Ethernet	Customer desired	Ethernet hub or switch to NewsroomSuite computer ethernet port
Remote serial	Up to 15 ft. (4.6m) (Quality RS422 extension module can be used)	Remote control from VTR to RS-422 card on NewsroomSuite computer
BNC video	8 ft.	Digital I/O composite or component Y to ATI Input Adapter
BNC video reference	Customer desired	Reference on Breakout Box
BNC video	Customer desired	Customer equipment to Breakout Box
XLR Audio	Customer desired	Customer supplied equipment to Breakout Box



Connecting System Cables

This illustration shows a typical setup of how each of the components connect to the NewsroomSuite computer. The following sections describe each connection in detail.



Connecting the Keyboard and Mouse

To connect the keyboard and mouse:

1. Plug the keyboard cable into the purple PS/2 port (or USB port) on the back of the NewsroomSuite computer.
2. Plug the mouse cable into the green PS/2 port (or USB port) on the back of the NewsroomSuite computer.

Connecting the Computer Monitor

You can connect one or two computer monitors to your system.

To connect a single monitor:

1. Plug the ATI output adapter cable into the **A/V OUT** port on the back of the NewsroomSuite computer.
2. Plug the **VGA1** connector on the other end of the ATI output adapter cable into the monitor cable (for the primary monitor).
3. If necessary, plug the other end of the monitor cable to the **VIDEO IN** port on the back of the monitor.

Some computer monitors have the cable permanently attached to the back of the monitor.

4. Plug the monitor's power cable into the back of the monitor and into a power strip or wall outlet.

To connect two computer monitors to your system:

- Follow the instructions for the single monitor, but in addition, plug the **VGA2** connector on the ATI output adapter cable into the monitor cable for the second monitor.

Connecting the Power Cable

To connect the power cable:

- Plug the power cable from the back of the NewsroomSuite computer to a power strip or wall outlet.



Connecting the Breakout Box

You connect the Breakout Box to the NewsroomSuite computer. If you are using two channels with NewsEdit, FeedClip, or NewsQ, you have two Breakout Boxes; each connect to the NewsroomSuite computer the same way. See “Connecting Audio and Video Cables to the Breakout Box” on page 34 for instructions on connecting audio and video cables to the Breakout Box.

Pro Digital/Analog Breakout Box

To connect the Breakout Box:

1. Plug the mini-SCSI cable from the left most port on the back of the Breakout Box to the mini-SCSI connector on the back of the NewsroomSuite computer.
2. Plug the power cable from the right most port on the back of the Breakout Box into the power supply box, and then plug the cable from the power supply into a power strip or wall outlet.

Pro Analog Breakout Box

To connect the Breakout Box, plug the cable from the back of the Breakout Box into the mini-SCSI connector on the back of the NewsroomSuite computer.

Connecting the ATI Input Adapter

The purple ATI Input Adapter lets you see video on the computer monitor through the NewsEdit user interface. You can connect the ATI Input Adapter in two ways. The first way connects the Breakout Box to the adapter directly; the second way connects the Breakout Box to an external monitor and then to the adapter. The adapter then connects to the NewsroomSuite computer.

Connecting the Breakout Box Directly

1. Plug the cable end of the ATI input adapter into the **VID IN** connector on the back of the NewsroomSuite computer.
2. Plug one end of a BNC video cable into the yellow Video In connector on the ATI input adapter and the other end into the **Y OUT** connector on the Breakout Box.

***NOTE:** If you are using the Pro Analog Breakout Box, plug the BNC video cable into the S-Video connector on the Breakout Box.*

Using an External Monitor

1. Plug the cable end of the ATI input adapter into the **VID IN** connector on the back of the NewsroomSuite computer.
2. Plug one end of a BNC video cable into the yellow Video In connector on the ATI input adapter and the other end into the **VID OUT** connector on the external monitor.
3. Using another BNC video cable, plug one end into the **VID IN** connector on the external monitor and the other end into the **Y OUT** connector on the Breakout Box.

NOTE: If you are using the Pro Analog Breakout Box, plug the BNC video cable into the S-Video connector on the Breakout Box.

Connecting Network Cables

Depending on the type of network you have, and the type of storage system you've chosen to use, you have different boards in your NewsroomSuite system.

Ethernet Connection

If you are using a Network Attached Storage (NAS) system, you are using a Gigabit ethernet connection.

To connect an ethernet switch to the NewsroomSuite computer:

- Plug the end of the RJ45 cable into the Gigabit port on the back of the NewsroomSuite computer and the other end into your ethernet switch.

Fibre Channel Connection

If you are using a Profile Media Server as part of your NewsroomSuite system, or creating a shared storage system with an Open SAN network, you are using fibre channel connections. You may have a single- or dual-port fibre channel board.

To connect a fibre channel switch to the NewsroomSuite computer:

- Plug the ends of the network cable into the **TX** and **RX** connectors on the back of the NewsroomSuite computer and the other ends into your fibre channel switch.



Connecting a Video Tape Recorder

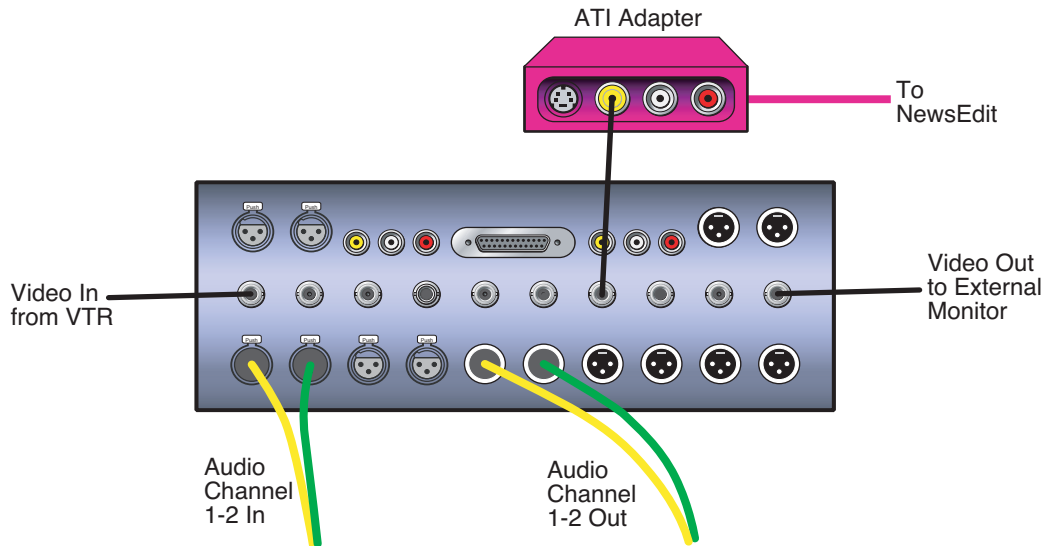
In most situations, you connect a VTR to your system to get footage from tape.

To connect a VTR to your system:

1. Using a remote serial cable, plug one end into the top RS-422 port on the back of the NewsroomSuite computer.
2. Plug the other end of the cable into the back of the VTR.

Connecting Audio and Video Cables to the Breakout Box

The following illustration and table details how to connect other video and audio cables to your NewsroomSuite computer system.



Connecting Audio and Video Cables to the Breakout Box

Analog Audio without a Mixer	VTR Channel 1 output	Breakout Box balanced IN left channel	XLR-female to XLR-male
	VTR Channel 2 output	Breakout Box balanced IN right channel	XLR-female to XLR-male
	Breakout Box Balanced Left Out	VTR Channel 1 input	XLR-male to XLR-female
	Breakout Box Balanced Right Out	VTR Channel 2 input	XLR-male to XLR-female
	Breakout Box Unbalanced Left Out	Left desktop speaker	RCA-male to XLR-male or 1/4" male
	Breakout Box Unbalanced Right Out	Right desktop speaker	RCA-male to XLR-male or 1/4" male
Digital Audio	VTR AES/EBU Channels 1&2 Output	Breakout Box AES/EBU Channels 1&2 Input	XLR-male to XLR-male
	Breakout Box AES/EBU Channels 1&2 Output	VTR AES/EBU Channels 1&2 Input	XLR-male to XLR-female
	Breakout Box Unbalanced Left Out	Left desktop speaker	RCA-male to XLR-male or 1/4" male
	Breakout Box Unbalanced Right Out	Right desktop speaker	RCA-male to XLR-male or 1/4" male
Video	VTR-SDI Output	Breakout Box SDI Input	Single BNC-BNC
	Breakout Box SDI Output	VTR SDI Input	Single BNC-BNC
	VTR Composite Output	Breakout Box Composite Input	Single BNC-BNC
	Breakout Box Composite Output	VTR Composite Input	Single BNC-BNC
	VTR Component Output	Breakout Box Component Input	Tri BNC-BNC harness
	Breakout Box Component Output	VTR Component Output	Tri BNC-BNC harness



Connecting an Audio Mixer

You can add an audio mixer to enhance NewsEdit XT's audio capabilities by feeding multiple inputs into the editor. The following table is a suggested configuration on the setup of a mixer and NewsEdit XT, based on the Mackie 1402VLZPro.

Input	From	To	Cable type
Analog Audio with a Mixer	VTR Channel 1 output	Mixer channel 1 line IN	XLR-female to 1/4"-male
	VTR Channel 2 output	Mixer channel 2 line IN	XLR-female to 1/4"-male
	Main mixer out left channel	Breakout Box balanced IN left channel	XLR-female to XLR-male
	Main mixer out right channel	Breakout Box balanced IN right channel	XLR-female to XLR-male
	Breakout Box Balanced Left Out	VTR Channel 1 input	XLR-male to XLR-male
	Breakout Box Balanced Right Out	VTR Channel 2 input	XLR-male to XLR-male
	Breakout Box Unbalanced Left Out	Left desktop speaker	RCA-male to XLR-male or 1/4" male
	Breakout Box Unbalanced Right Out	Right desktop speaker	RCA-male to XLR-male or 1/4" male

Installing the NewsEdit SC Video Board and Breakout Box (Optional)

If you want to use an external broadcast VGA monitor to provide video output with your NewsEdit SC, you need to install the AJA XenaSD board and AJA KL Breakout Box. The board and Breakout Box are available from Thomson Grass Valley.

This chapter discusses how to:

- Install the XenaSD board and KL Breakout Box
- Install the XenaSD driver and control panel
- Enable SDI output on NewsEdit SC



Installing the XenaSD Board and Breakout Box

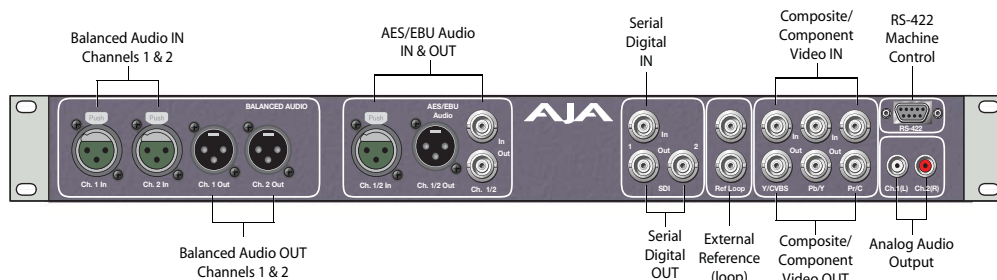
The XenaSD board installs in the NewsEdit SC computer and connects to the Breakout Box.

To install the XenaSD board:

1. Remove the cover from the NewsEdit SC computer.
2. Insert the XenaSD board into an available slot.
3. Replace the cover on the NewsEdit SC computer.
4. Connect the cables as follows:
 - a. Using the cable provided with the KL Breakout Box, connect the 60-pin connector and the three BNC connectors (labeled SDI IN, SDI OUT 1, and SDI OUT 2) to the back of the Breakout Box.
 - b. Connect the other end of the cable to the XenaSD board in the NewsEdit SC computer.

NOTE: If you aren't using the Breakout Box, use the octopus cable provided with the XenaSD board to connect the board directly to your components.

5. Connect video and audio cables to the Breakout Box as needed for your newsroom setup.



Installing the XenaSD Driver and Control Panel

Once you've installed the XenaSD board and connected the cables, you need to install the board's driver and control panel.

Installing the XenaSD Driver

The driver for the XenaSD board is located on the NewsroomSuite CD, in the **Drivers I AJA** directory. You can use either the Found New Hardware Wizard or the Update Device Driver Wizard to install the XenaSD driver.

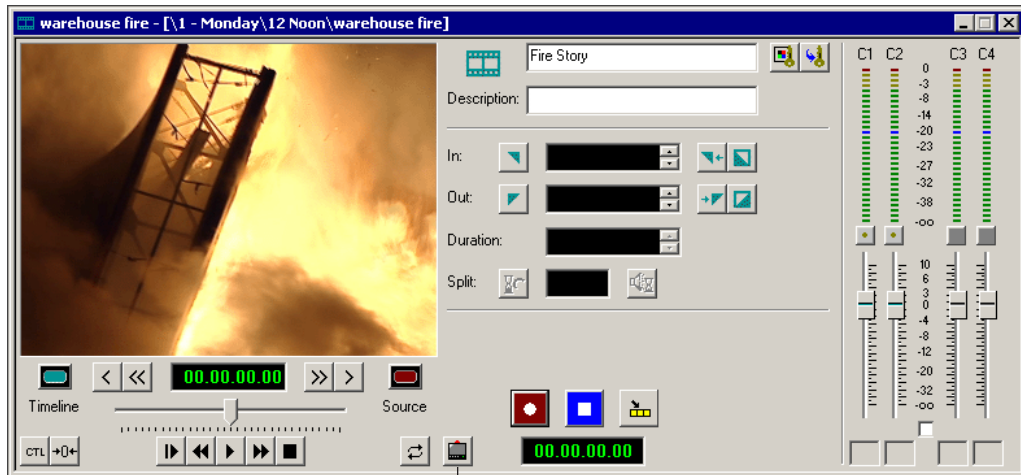
Installing the XenaSD Control Panel

1. Insert the NewsroomSuite CD into your CD drive.
2. Navigate to the **Drivers I AJA** directory.
3. Navigate to the **XenaSDControlPanel** directory.
4. Double-click on **Setup.exe**.
5. Install the control panel following the instructions on each screen.



Enabling SDI Output on NewsEdit SC

When you have the XenaSD board and Breakout Box connected to your NewsEdit SC, you can connect an external monitor to your system to view video output. To enable this feature, on any of the NewsEdit Timeline tools, click the **Use SDI Output** button.



Use SDI Output

The video output appears on the external monitor.

Connecting External Controllers to NewsEdit

There are three external controllers you can use with NewsEdit: the Motorized Fader Controller, the Jog/Shuttle Controller, and the Effects Controller.

This chapter discusses how to:

- Connect each of the external controllers to a NewsEdit workstation
- Assign a COM port to a particular controller
- Verify that the COM ports are configured correctly



Introducing the External Controllers

An external controller lets you control features of NewsEdit easily and quickly.

Name of Controller	Description	Supported Products
Jog/Shuttle	Lets you control NewsEdit XT or SC externally, making news editing faster. The controller incorporates a jog/shuttle wheel for convenient searching, buttons to minimize keyboard strokes, and a back-lit LCD timecode display for accurate editing.	NewsEdit XT NewsEdit SC
Motorized Fader	Lets you control the audio features of NewsEdit externally, making refining and perfecting the audio mix of your sequences easier. The controller features four touch-sensitive, motorized faders, 16 channel switches, 4 function keys, and bank shift buttons for control of NewsEdit audio functions.	NewsEdit XT NewsEdit LT NewsEdit SC
Effects	Lets you control creating and modifying effects in NewsEdit externally. The controller is a 3-axis joystick mechanism with five rotary encoders and 10 switches for control of NewsEdit effect functions.	NewsEdit XT NewsEdit LT NewsEdit SC

Connecting an External Controller to the NewsEdit Workstation

You connect the controller to your NewsEdit computer using an RS-422 port for the Jog/Shuttle Controller and a USB port for the Fader or Effects Controller.

The NewsEdit computer comes configured to use COM4 for the Jog/Shuttle Controller.

Connecting the Jog/Shuttle Controller

1. Plug the controller's 9-pin connector into the bottom RS-422 port on the back of the NewsEdit computer (COM4).
2. Plug the controller's power connector into a DC power adapter connection.
3. Verify that the following information appears on the controller's display when it powers up:

**Grass Valley
NewsEdit
Rev 1.04**

4. Turn on your NewsEdit XT or SC computer as usual.

Connecting the Motorized Fader or the Effects Controller

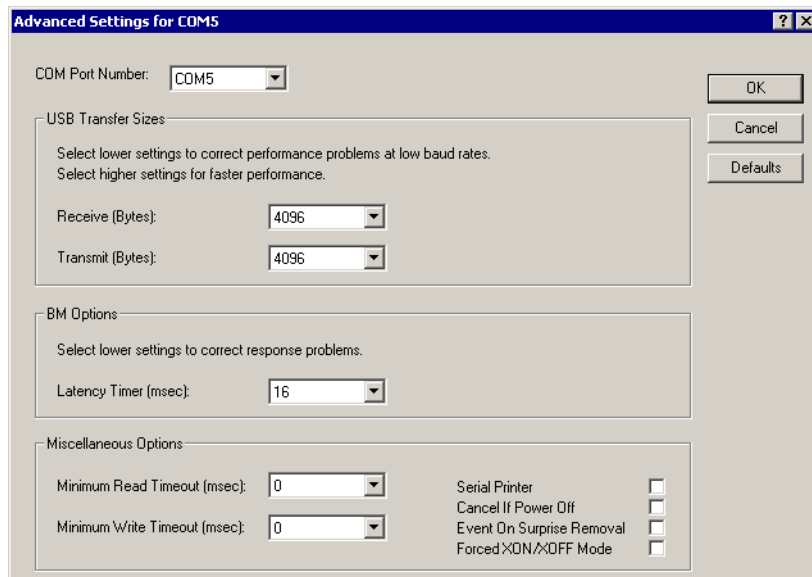
1. Plug the controller's USB connector into one of the two available USB ports on the back of your NewsEdit XT, LT or SC computer (usually COM5 for the Motorized Fader Controller and COM6 for the Effects Controller).
2. If you are connecting the Motorized Fader Controller, plug the controller's power connector into a DC power adapter connection.
The Effects Controller is powered off the USB cable.
3. Turn on your NewsEdit computer as usual.
4. When the New Hardware Wizard appears, follow the directions on the screen.
5. When asked for the controller's driver, navigate to: **C:\Program Files\Vibrint 3.0\Drivers\JLC USB Drivers.**
6. Finish the new hardware installation.



Verifying the COM Port

To verify that the COM port is set correctly in the Device Manager:

1. Right-click on My Computer and select **Properties**.
2. Click the Hardware tab on the System Properties window and click **Device Manager**.
3. Click the **+** symbol next to the Ports item.
4. Click on **JLCooper USB to Serial (COM#)** and select **Properties**.
5. Click the Port Settings tab on the Properties tab and click **Advanced**.



6. In the COM Port Number field, select the correct COM port from the pull-down list.
7. Click **OK** to close the Advanced window.
8. Click **OK** again to close the Properties window.

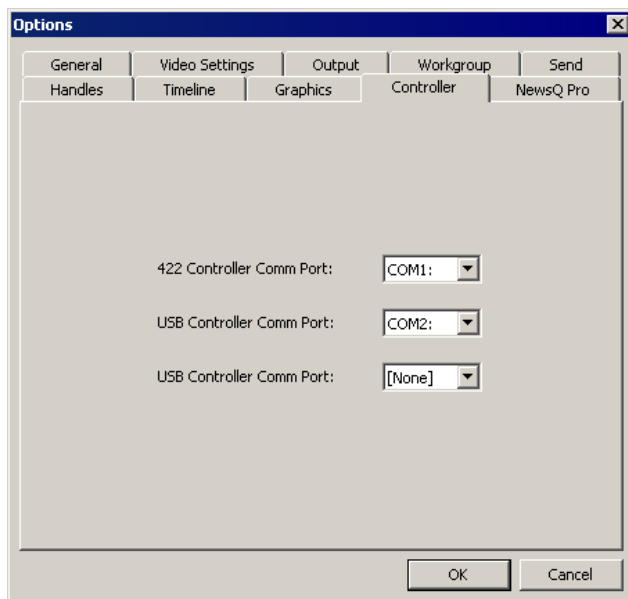
Assigning a COM Port for the Controller

To use any of the controllers, you need to assign a specific COM port in NewsEdit for the controller. NewsEdit has pre-configured COM ports as follows:

COM Port	Type of Port	Configured Device
1	GPIO	NewsQ GPIO
2		
3	RS-422	Video Tape Recorder (VTR)
4	RS-422	Jog/Shuttle Controller
5	USB	Motorized Fader Controller
6	USB	Effects Controller

To assign a COM port:

1. In NewsEdit XT/LT/SC, choose **Tools | Options | Controller**.





Chapter 4 *Connecting External Controllers to NewsEdit*

2. For the Jog/Shuttle Controller, select the correct COM port from the **422 Controller Comm Port** drop-down list; for the other controllers, select the correct COM port from the **USB Controller Comm Port** drop-down list.

The COM port needs to match the number of the USB port where you connected the controller.

3. Click **OK**.

You can now use the controller to control features on NewsEdit.

Turning On the NewsroomSuite Computer

Once your computer is cabled, you are ready to turn it on and launch the NewsroomSuite applications.

This chapter discusses:

- How to power up the system
- The System Self Test
- How to launch NewsroomSuite applications



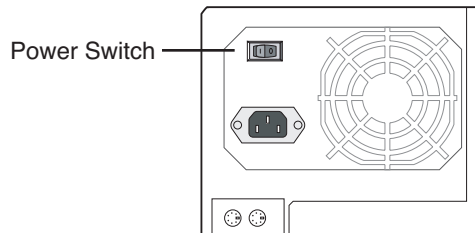
Powering Up the System

You power up the NewsroomSuite computer differently depending on your type of system.

Standalone System

The standalone NewsroomSuite computer has two power switches—one on the back of the computer and one on the front. To power up the system:

1. Turn the power switch on the back of the computer to on.

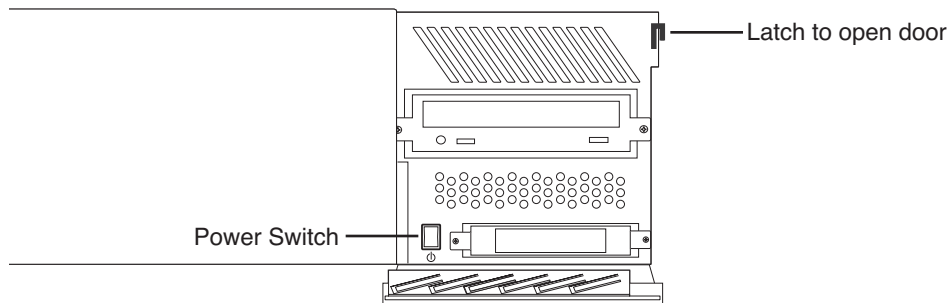


2. Press the power button on the front of the computer to turn it on.

You can leave the power switch on the back of the computer on and control the power to the computer using the button on the front of the NewsroomSuite system.

Rackmount System

The rackmount NewsroomSuite computer only has one power switch. To power up the system:



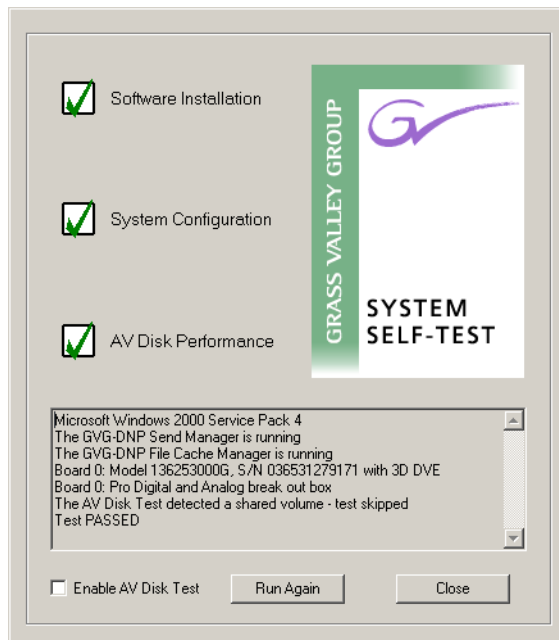
1. On the front of the computer, flip down the right side door.
2. Press the power switch to turn it on.
3. Close the computer door.

Understanding the System Self Test

The NewsroomSuite computer runs a System Self Test automatically each time that you boot the computer. The System Self Test looks at three areas:

- **Software Installation**—Checks for the correct version of Profile software, Direct X driver, Targa drivers (for NewsEdit XT), operating system and video drivers (NewsEdit LT and SC), and export and cache service. In an Open SAN system, this test also checks the CVFS version.
- **System Configuration**—In NewsEdit XT, checks for the correct version of Targa board and Breakout Box firmware; in NewsEdit LT and SC, checks for the correct version of the audio renderer and the VMR.
- **AV Disk Performance**—Tests the media drives input and output performance.




As the System Self Test runs, you see the results in the System Self Test window:





Chapter 5 *Turning On the NewsroomSuite Computer*

Each area tested can have one of three results:

This symbol...	Means...	Do this...
	The test passed.	Use your NewsroomSuite computer as usual.
	The test is currently running.	Wait for the test to complete.
	The test failed.	See “Troubleshooting the System Self Test” on page 51 for instructions.

If you are using shared storage, the AV Disk Performance Test is skipped and you see this message: *The AV Disk Test detected a shared volume - test skipped.*

Running the System Self Test Manually

You can run the System Self Test anytime you want to test the system. Before running the System Self Test, make sure that the NewsEdit program is not running.

To run the System Self Test:

- Go to **Program | Startup | System Self Test.**

The Self Test runs.

Troubleshooting the System Self Test

If any of the three tests fail, use this table to determine the cause and fix the problem.

If you see this message...	It means...
<p>Hardware Query Failed</p>	<p>The system can't find the Targa card.</p> <p>Reseat the Targa card in its slot and run the System Self Test again. If the test fails again with the same message, your Targa board may need replacing. Contact your Customer Service Representative.</p>
<p>Codi driver ___ is not supported. Video card driver ___ is not supported. CVFS client file system ___ is not supported. DirectX driver version ___ is not supported. Emulex LAN driver ___ is not approved. Emulex SCSI driver ___ is not approved. QLogic LAN driver ___ is not approved. QLogic SCSI driver ___ is not approved.</p>	<p>You have an incorrect version of one of the drivers installed on your system.</p> <ol style="list-style-type: none"> 1. Insert the NewsroomSuite CD into the CD-ROM drive on the computer. 2. Navigate to the Drivers directory. 3. Install the latest driver. <p>Contact your Customer Service Representative for further details.</p>
<p>No break out box detected. Unsupported break out box detected.</p>	<ol style="list-style-type: none"> 1. Check all cable connections from the Breakout Box and to the NewsroomSuite computer. 2. Check that the power cable is connected correctly to the Breakout Box.
<p>Bob version ___ is not approved.</p>	<p>You have an outdated version of the break out box firmware.</p> <ol style="list-style-type: none"> 1. Go to C:\Program Files\Vibrint 3.0\Utilities. 2. Double-click ProDABobUpdate.exe. <p>The update runs and updates your break out box firmware.</p>
<p>Profile Errors: Installed Profile software is version ____. Profile software not found. The approved version of the Profile software is x.x.</p>	<p>The Profile software is either not installed on your machine or is not the current version.</p> <ol style="list-style-type: none"> 1. Insert the NewsroomSuite CD into the CD-ROM drive on the computer. 2. Navigate to the Software Installs/Profile version/XP directory. 3. Double-click on the file Setup.exe. 4. Follow the instructions for "Installing Profile Software" on page 54.



Chapter 5 Turning On the NewsroomSuite Computer

If you see this message...	It means...
The XX database server is not compatible.	<p>The shared database is not compatible with your version of NewsroomSuite software.</p> <p>On your FSM or DSM, run the SetupNewsShareServer utility, which can be found on the NewsroomSuite CD-ROM.</p> <p>For more information, see the <i>NewsShare Technical Reference Guide</i>.</p>
No boards found or driver not running. No boards found.	<p>The system can locate the Targa board but the CODI software isn't completely installed.</p> <ol style="list-style-type: none">1. Uninstall the NewsroomSuite software.2. Uninstall the CODI software.3. Reinstall the NewsroomSuite software. <p>The CODI software installs with the NewsroomSuite software.</p>
ERROR during AV Disk Test: remote volume detected.	<p>You are using shared storage. The AV Disk Performance test checks the local media drives, so the test doesn't run if shared storage is used.</p>
ERROR during AV Disk Test:	<p>Your local disk drive is too slow; it needs to be <12 Mb read/write.</p>

Launching the NewsroomSuite Applications



To launch the application from your local hard drive:

- Double-click the application icon on the computer desktop or open the program by clicking **Start | Programs | Vibrint | <name of program>**.



Installing Software

The NewsroomSuite software should already be installed on your computer when your system arrives. However, if you ever need to install the Profile or NewsroomSuite software, this chapter provides instructions.

This chapter discusses how to:

- Install Profile software
- Install the NewsroomSuite software
- Obtain a software license number



Installing Profile Software

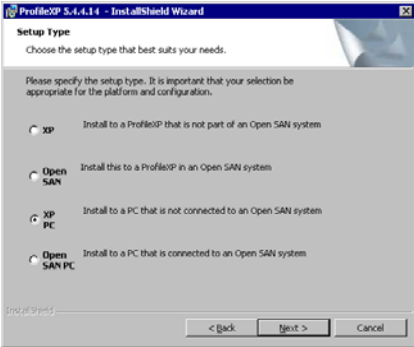
The Profile software should already be installed on your computer when your system arrives. However, if you ever need to install the Profile software, follow these instructions.

***NOTE:** If you have a version of Profile software installed on your machine, you need to uninstall it before installing the latest version of Profile software.*

To install the Profile software:

1. Insert the NewsroomSuite CD into your CD drive.
2. Navigate to **Software Installs | Profile version | XP**.
3. Double-click on **Setup.exe**.
4. Install the software following these instructions:

On this screen...	Do this...
Welcome	Click Next .
License Agreement	Read and accept, then click Next .

On this screen...	Do this...
<p>Setup Type</p>	 <p>Select your type of setup and click Next:</p> <ul style="list-style-type: none"> • XP PC—Select this type if your system is part of a local network and using local storage, or is part of a Network Attached Storage (NAS) system and using shared storage. • Open SAN PC—Select this type if your system is part of an Open SAN system using shared storage. <p>>>>> WARNING: The other setup types are for installing Profile software on a Profile Video Server and should never be used on a NewsroomSuite computer.</p>
<p>Ready to Install</p>	<p>Click Install.</p>
<p>Installation Complete</p>	<p>Click Finish. The computer prompts you to reboot so the new settings take effect.</p>



Installing the NewsroomSuite Software

The NewsroomSuite software should already be installed on your computer when your system arrives. If you ever need to install the NewsroomSuite software, follow these instructions.

***NOTE:** If you have a version of NewsroomSuite software installed on your machine, you need to uninstall it before installing the latest version of NewsroomSuite software.*

To install the NewsroomSuite software:

1. Insert the NewsroomSuite CD into your CD drive and navigate to **Software Installs | DNP Application**.

If you are installing NewsEdit LT or SC, navigate to the **Software Installs** directory.

2. Double-click on **SetupNewsRoomSuite.exe** (or **SetupNewsEditLT.exe** or **SetupNewsEditSC.exe**).
3. Follow the directions below for using Local or Shared Storage. If your system is part of an Open SAN system or connected to Network Attached Storage (NAS) or a K2 Server, use the instructions for Shared Storage; otherwise, use the instructions for Local Storage.

Local Storage System

Follow these instructions if you are installing the NewsroomSuite software on a system using local storage:

On this screen...	Do this...
Welcome	Click Next .
Select Destination Directory	Leave set at the default location and click Next .
Select Shared or Local Installation	<ol style="list-style-type: none">1. Select Local and click Next.2. If you want to use security on your database, check Domain Security.3. Click Next.
Specify Directory for Video and Audio Files	Leave set at the default location and click Next .
Ready to Install	Click Next to begin the installation.
Installation Complete	Click OK to close the installation program. The computer prompts you to reboot so the new settings take effect.

Once the computer reboots, NewsEdit sets up a News database to store your news files and installs necessary drivers. A System Self Test then runs, testing your software configuration and software versions.



Shared Storage System

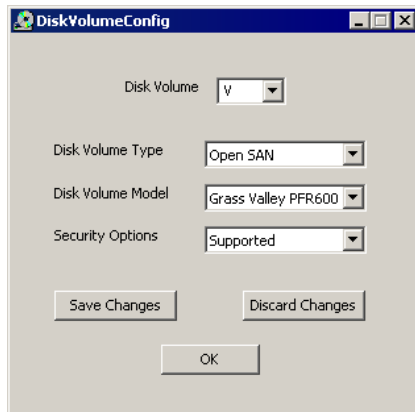
Follow these instructions if you are installing the NewsroomSuite software on a system using shared storage, that is part of an Open SAN system or connected to a K2 Server or to Network Attached Storage (NAS):

On this screen...	Do this...
Welcome	Click Next .
Select Destination Directory	Leave set at the default location and click Next .
Select Shared or Local Installation	<ol style="list-style-type: none">1. Select Shared.2. If you want to use security on your shared database, check Domain Security.3. Click Next.
Specify the Servers for the Shared Database	Enter the names of the primary and secondary (if applicable) File System Managers (or Database System Manager for the NAS system) and click Next .
Specify Directory for Shared Video and Audio Files	Leave set at the default location and click Next .
Specify Directory for AV Cache Files	Leave set at the default location and click Next .
Specify Location for Shared Thumbnails	Leave set at the default location and click Next .
Specify Directory for Local Video and Audio Files	Leave set at the default location and click Next .
Specify the shared drives for use with the shared storage	Enter the drive letter(s) of the drives you are using on the shared system. Separate multiple drives with commas, such as V,W,X.
Ready to Install	Click Next to begin the installation.
<i>Note: If the DiskVolumeConfig window appears, see “Configuring the Disk Volume” on page 59 for instructions.</i>	
Installation Complete	Click OK to close the installation program. The computer prompts you to reboot so the new settings take effect.

Once the computer reboots, NewsEdit sets up a News database to store your news files and installs necessary drivers. A System Self Test then runs, testing your software configuration and software versions. See the *NewsShare Technical Reference Guide* (part number 071-8371) for details on the shared news database.

Configuring the Disk Volume

When you install the NewsroomSuite 5.5 software for the first time, the Disk Volume Configuration window appears during installation. You need to configure the shared volume for your type of network and equipment. The Disk Volume Configuration only needs to be done once on each shared volume, on the first NewsroomSuite system installing the 5.5 version of software.



To configure the disk volume:

1. Select the drive letter of the disk volume to configure, and configure the volume as follows:

Setting	Options	Description
Disk Volume Type	Unknown LocalDisk Open SAN NAS K2 Storage	Select your type of shared storage.
Disk Volume Model	Unknown Grass Valley PFR500, PFR600, PFR700, PFR800 Ciprico 1700, 2400, 3600 IBM NAS	<i>Open SAN:</i> Choose Grass Valley PFR500, PFR600, PFR700, or PFR800 ; if you don't know, select PFR600 . <i>NAS:</i> Choose Ciprico 1700, 2400, 3600, or IBM NAS . <i>K2 Storage:</i> Choose Grass Valley PFR700 .
Security Options	Supported Not Supported	Select Supported if your system is configured to use Windows Security; if not, select Not Supported .

2. Click **OK** to save changes and return to the software installer.



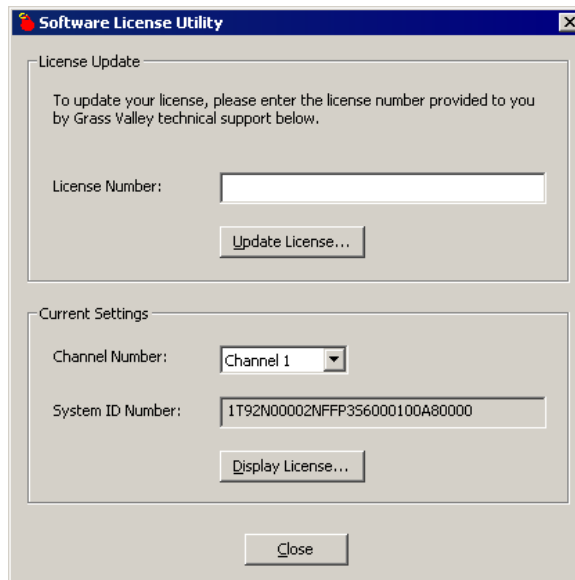
Obtaining a Software License Number

Once you've installed the NewsroomSuite software, you need to get a License Number from Grass Valley.

To obtain a License Number:

1. Open Windows Explorer and browse to **C: | Program Files | Vibrint 3.0 | Utilities**.
2. Double-click the file **License.exe** to open it.

The Software License Utility opens:



Your System Identification Number appears in the bottom field of the window.

3. Call Grass Valley Product Support at 1-800-547-8949 and provide the customer service representative with your System Identification Number, as well as the software version and the original order number for the system.
4. Enter the License Number provided to you by Grass Valley Product Support and click **Update License**.

SmartBins

SmartBins provide a way to automatically synchronize the media in NewsEdit and Video Server bins. A SmartBin is a NewsEdit bin which monitors a folder on a Video Server and automatically updates the SmartBin contents when new or updated media appears.

Video Server SmartBins handle clips from a Profile, an M-Series iVDR, or a K2 media client, and Media Import SmartBins handle QuickTime DV25/DV50 media. SmartBins work differently depending on the type of shared storage you are using:

- A Profile Media Server on an Open SAN system supports Video Server SmartBins only.
- A NAS or K2 system supports Video Server SmartBins and Media Import SmartBins.

NOTE: The NewsBrowse system includes a component called the SmartBin Encoder, which is different from a Media SmartBin or a Server SmartBin because it monitors News bins for the creation of low-resolution proxy material. The SmartBin Encoder is installed on the NewsBrowse Advanced Encoder and supports NewsBrowse systems version 3.0 or higher.

This chapter discusses:

- SmartBins on the different types of storage networks
- How to install required software
- How to configure SmartBins Service (for NAS and K2 networks)
- How to create SmartBins in NewsEdit



Understanding SmartBins

SmartBins work differently depending on the type of shared storage network you are using: Open SAN, NAS, or K2.

SmartBins on an Open SAN System

On an Open SAN system, SmartBins map folders from a bin in the NewsEdit tree view to a bin in the Profile view. As with drag and drop via ContentShare Explorer or Media Manager, this automatic synchronization never moves actual media files—the bin structure represents two different views into the shared media file system.

When you first create a bin in NewsEdit, you can map that bin to a Profile bin; after a NewsEdit bin is created, it cannot be mapped. Once an association is created, the NewsEdit and Profile bins are kept synchronized.

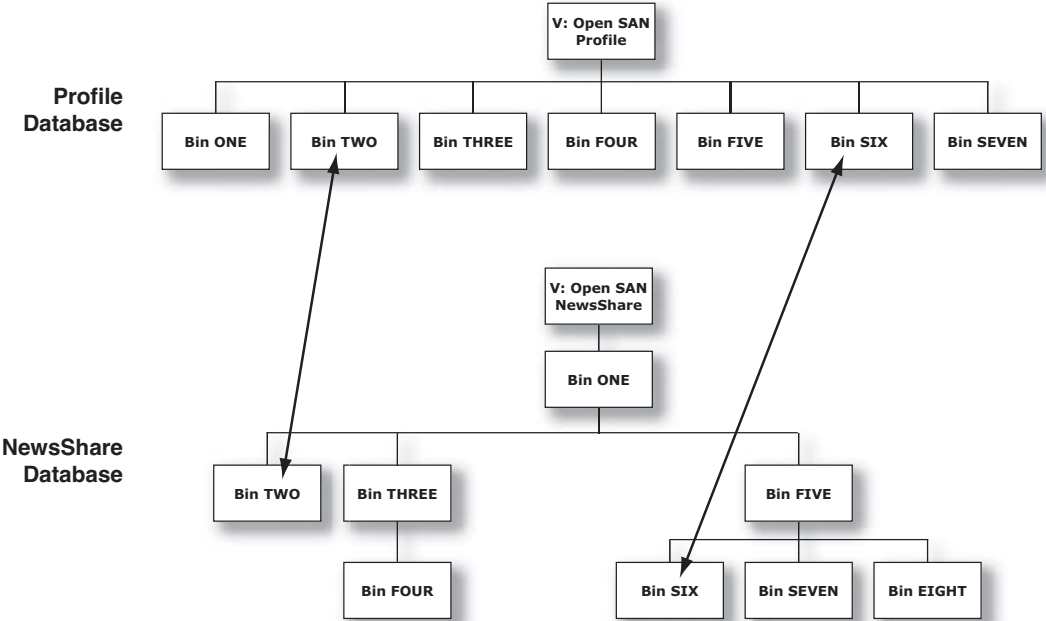
SmartBins support simple (flattened) movies, but not sequences, sub-folders, or sub-clips that the Profile cannot use directly. Also, SmartBins cannot have sub-bins.

The computer running the SmartBins SAN service must have a Fibre Channel-SCSI connection to the Open SAN and a CVFS license.

SmartBin Folder Synchronization

When the SmartBins Service starts, it determines which NewsEdit bins are associated with Profile bins and then queries the Profile database for the movies in each associated bin. Any movies in Profile bins that are not in the associated NewsEdit bin are registered to the NewsEdit database. The SmartBins service does not verify that NewsEdit clips are in the Profile database, so the synchronization is one way only—Profile to NewsEdit.

No files are moved—a mapping of the folders between the flat and tree views takes place.





Updating the Databases

The SmartBins Service constantly monitors both the NewsEdit and Profile databases. Examples of updates to the database are listed below.

Action		Profile Database	NewsEdit Database
Rename clip	on Profile	Clip renamed.	SmartBins service renames clip; if clip cannot be renamed, the databases become out-of-sync.
	on NewsEdit	Clip renamed per NewsEdit unless there is a conflict, in which case renaming fails in both databases.	Clip renamed unless there is a conflict on the Profile, in which case renaming fails in both databases.
Delete clip	on Profile	Clip deleted.	SmartBins service deletes clip; if the clip is in use, databases become out-of-sync.
	on NewsEdit	Clip deleted per NewsEdit unless there is a conflict, in which case deletion fails in both databases.	Clip deleted unless there is a conflict on the Profile, in which case deletion fails in both databases.
Delete bin	on Profile	Bin (and all movies contained within) deleted, unless a clip is being used in NewsEdit in which case the deletion fails in both databases.	
	on NewsEdit	No change; bin not deleted.	SmartBin monitoring disabled; bin and bin contents deleted.
Add a movie	on Profile	Movie added.	SmartBins service registers clip unless it is a complex movie, in which case the clip is not registered and the databases become out-of-sync.
Create master clip	on NewsEdit	SmartBins service registers master clip when recording is complete.	Master clip created while recording

SmartBins on a NAS or K2 System

NAS and K2 systems support two types of SmartBins—Video Server SmartBins, which handle clips from a Profile Media Server, M-Series iVDR, or K2 Server, and Media Import SmartBins, which handle QuickTime DV25/DV50 media.

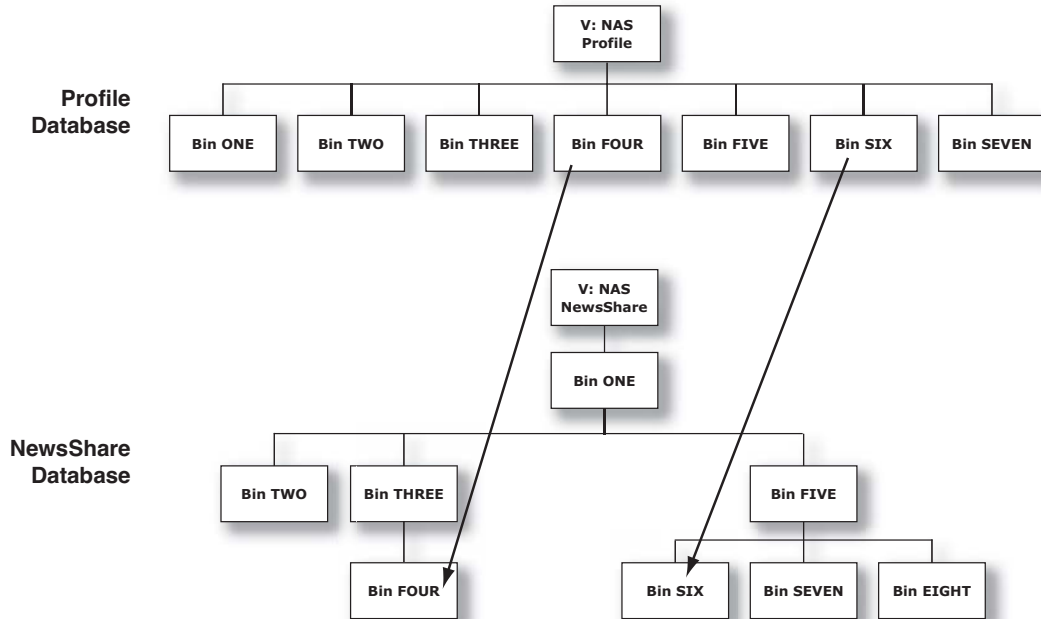
Video Server SmartBins

On a NewsShare NAS or K2 System, SmartBins map folders from a bin in the NewsEdit tree view to a bin in the video server view. Media is transferred, unidirectionally, via GXF from the video server to the NewsEdit Bin and registered in the NewsShare database so it can be seen from NewsEdit.

SmartBins use a static directory mapping so all files in a particular video server bin are monitored and automatically transferred as they arrive to a selected NewsEdit Bin, and are then (optionally) deleted from the video server.

SmartBins effectively create a buffered recording so that material is protected and redundantly saved (both on the video server and on the NAS or K2 storage) while still making the file available for shared editing or immediate playout. There is a 30-second delay before the recorded material is available on NewsEdit.

SmartBins on a NAS or a K2 system require an external XRE Server or DSM to provide the folder monitoring and transfer services to the NAS system. A DSM can support up to 4 25-Mbit record streams (2 M-Series chassis). Beyond four streams, dedicated XRE Servers should be used as necessary, budgeting 6 streams per XRE Server. You also need to mount the NAS or iSCSI volume on the machine running the SmartBins Service.



Media Import SmartBins

Media Import SmartBins allow you to import QuickTime DV25/DV50 .mov files into NewsEdit so you can use Apple's Final Cut Pro within a NAS environment. Once configured, files exported into the source folder are automatically imported into the NewsEdit bin and converted from .mov to .vmf format.

Unlike Video Server SmartBins, a file in a Media Import SmartBin must finish importing before the data is available for editing.

Installing the Software

In order to use SmartBins, you need to install Profile PC client software, install the SmartBins Service and obtain a license for the software for use in your newsroom. The software should be installed on the system that will be hosting the SmartBin Server, which may be a DSM or a separate XRE Server.

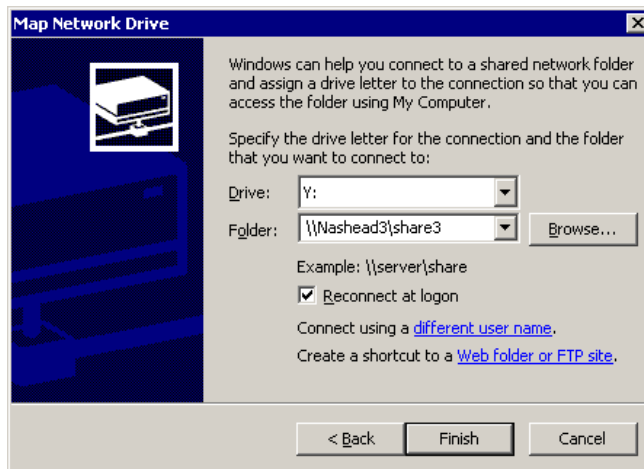
In addition, if you are using SmartBins on a NAS system, you need to mount the NAS volume on the machine running the SmartBins Service. If you are using SmartBins on a K2 system, you need to make sure the machine hosting the SmartBins Server is properly configured for the K2 network.

Mounting the NAS Volume

If you are using SmartBins on a NAS system, you need to mount the NAS volume on the machine running the SmartBins Service before installing the NewsroomSuite software.

To mount a NAS volume:

1. On the machine you want to map the drive to, open **My Computer** and select **Tools | Map Network Drive**.



2. Select the NAS drive letter from the drop-down list.
3. Type in the name of the NAS folder where the shared database resides.
4. Check the **Reconnect at login** checkbox.
5. Click **Finish**.



Configuring the SmartBins Server on a K2 Network

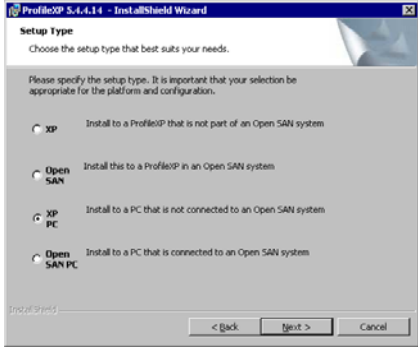
If you are running the SmartBins Service on a K2 network, you need to make sure that the machine running the SmartBins Server is properly configured. See the *NewsShare Technical Reference Guide* (part number 071-8371) for details.

Installing the Profile Software

You need to install the Profile software on the computer that will be running the SmartBins Service.

To install the Profile software:

1. Insert the NewsroomSuite CD into your CD drive.
2. Navigate to **Software Installs | Profile version | XP**.
3. Double-click on **Setup.exe**.
4. Install the software following these instructions:

On this screen...	Do this...
Welcome	Click Next .
License Agreement	Read and accept, then click Next .
Setup Type	For an Open SAN system, select Open SAN PC ; for a NAS or K2 system, select XP PC . Click Next . 
Ready to Install	Click Install .
Installation Complete	Click Finish . The computer prompts you to reboot so the new settings take effect.

Installing the SmartBins Service

To install the SmartBins Service:

1. Insert the NewsroomSuite CD into your CD drive and navigate to the **SmartBins Service** folder.
2. Double-click on **SetupSmartBinsService.exe**.
3. Follow these instructions:

On this screen...	Do this...
Welcome	Click Next .
Select Destination Directory	Leave set at the default location and click Next .
Select SmartBin Option	<ol style="list-style-type: none">1. Select SmartBins Encoder if you are installing this software on a NewsBrowse Ingest Encoder; otherwise, select Standard. <i>NOTE:</i> Selecting SmartBins Encoder also installs the NewsFTP Service. See Chapter 8, "Installing the NewsFTP Service," for details.2. If you want to use security on your shared database, check Domain Security.3. Click Next.
Specify the Servers for the Shared Database	Enter the names of the primary and secondary (if applicable) Database System Managers and click Next .
Specify Directory for Shared Video and Audio Files (Standard option only)	Leave set at the default location and click Next .
Specify Directory for AV Cache files	Leave set at the default location and click Next .
Specify the shared drive(s) for use with the shared storage	Leave set at the default location and click Next .
Ready to Install	Click Next to begin the installation.
Installation Complete	Click OK to close the installation program. The computer prompts you to reboot so the new settings take effect.



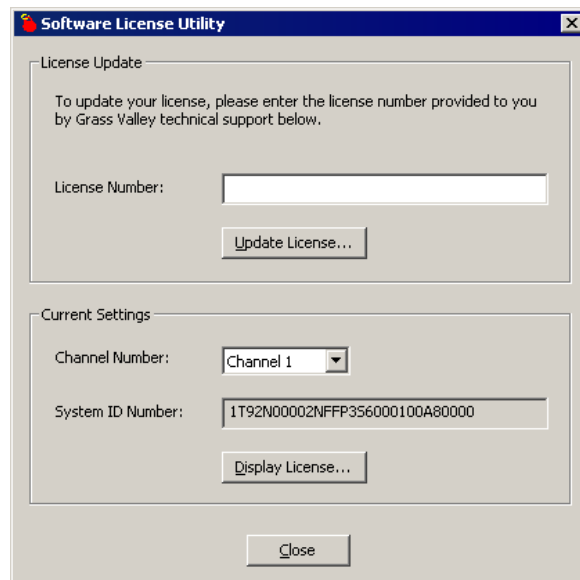
Obtaining a Software License Number

Once you've installed the SmartBins Service software, you need to get a License Number from Grass Valley.

To obtain a License Number:

1. Open Windows Explorer and browse to **C: | Program Files | Vibrint 3.0 | Utilities**.
2. Double-click the file **License.exe** to open it.

The Software License Utility opens:



Your System Identification Number appears in the bottom field of the window.

3. Call Grass Valley Product Support at 1-800-547-8949 and provide the customer service representative with your System Identification Number, as well as the software version and the original order number for the system.
4. Enter the License Number provided to you by Grass Valley Product Support and click **Update License**.

Configuring SmartBins Service on a NAS or K2 System

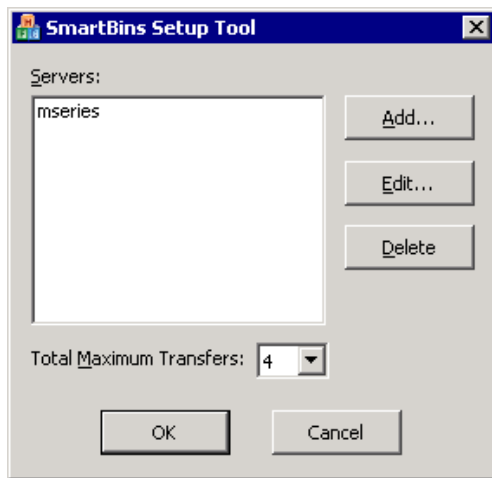
If you are using SmartBins on a NAS or K2 system, you need to configure your M-Series iVDR(s), Profile XP, or K2 Media Server to use SmartBins.

NOTE: *You don't need to configure SmartBins on an Open SAN system.*

To configure the SmartBins Service on a NAS or K2 system:

1. Go to **Start | Programs | Vibrint 3.0 | SmartBins Setup Tool**.

The SmartBins Setup Tool opens.



2. Select the **Total Maximum Transfers** from the drop-down list.

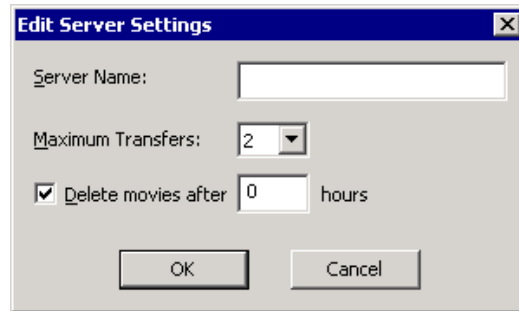
The Total Maximum Transfers is the total amount of streams for this particular instance of the SmartBins Service. Select **4** if the SmartBins Service is installed on the DSM and select **6** if the SmartBins Service is installed on a standalone PC.

NOTE: *Increasing the number of Total Maximum Transfers affects the bandwidth on the NAS system.*

3. Click **Add**.



The Edit Server Settings window appears:



4. Enter the name of the Profile Server , M-Series iVDR, or K2 Media Server you are using.
5. Select the number of **Maximum Transfers** per server from the drop-down list.
If you are installing this software on a DSM, the maximum number of transfers is 2.
6. Check **Delete movies after ___ hours**, and enter the number of hours after a transfer is complete for media to remain in the database before being automatically removed.
7. Click **OK** to close the setup tool.

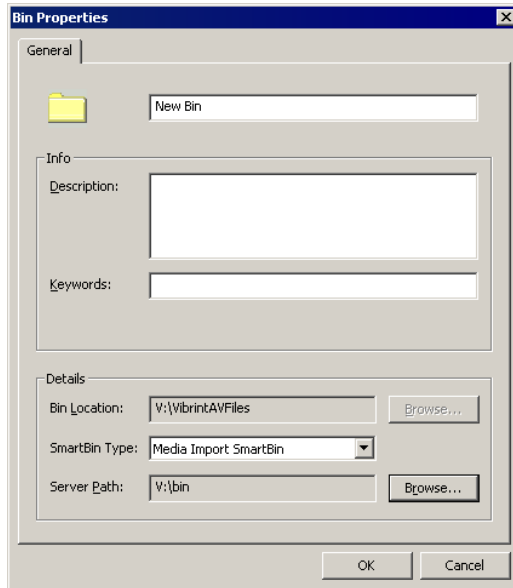
The SmartBins Service restarts.

Creating SmartBins in NewsEdit

Once you've installed the SmartBins Service, you can create SmartBins in NewsEdit which get automatically monitored and updated. A SmartBin monitors the server folder you specify and updates the content of the SmartBin automatically when new clips or updated feeds appear. You don't need to go into the server bin and copy the media into your NewsEdit bin in order to use it in for payout.

To create a SmartBin:

1. Open NewsEdit on any client workstation.
2. Click the **New Bin** button on the Bin toolbar.



3. Select the SmartBin Type from the drop-down list:

Video Server SmartBin	Allows clips from a Media Server to update automatically in a NewsEdit Bin.
Media Import SmartBin	Allows QuickTime DV25 .mov and DV50 .mov files to import automatically into a NewsEdit Bin.

4. Follow the directions below for the type of SmartBin you are creating.

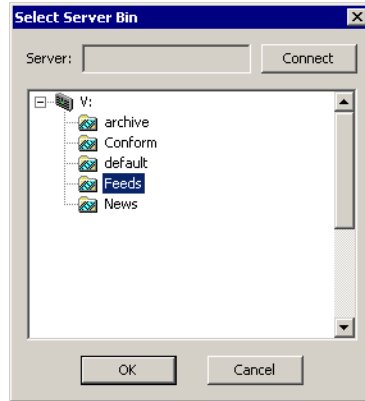


Creating a Video Server SmartBin

To create a Video Server SmartBin:

1. Click **Browse** to the right of the Server Path field.

The Select Server Bin window appears:



2. Enter the name of the server and hit **Connect** (If you have an Open SAN system, you don't need to enter the name of the server).

***NOTE:** You only need to enter the name of the server the first time you connect; the server connects automatically once you've set it up.*

3. Select the bin to monitor and click **OK**.
4. Click **OK** to create the SmartBin.

NewsEdit now monitors the Media Server folder and adds new media to this bin automatically.

Creating a Media Import SmartBin

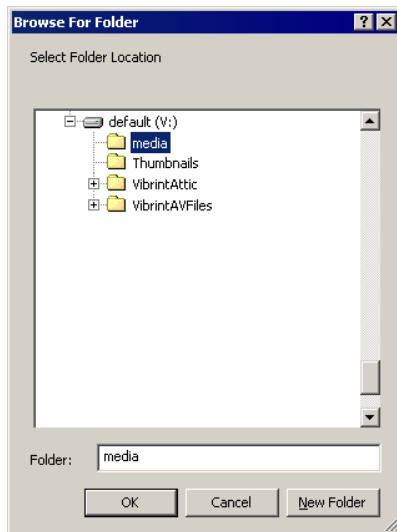
Media Import SmartBins allow you to automatically import QuickTime DV25 and DV50 .mov files into NewsEdit. This allows you to use Apple's Final Cut Pro video editing application, within a NAS environment, to create news footage and then import it into NewsEdit.

Once set up, whenever you export a file into the source folder, it is automatically imported into the NewsEdit Bin. You can then use it in a sequence.

To create a Media Import SmartBin:

1. Click **Browse** to the right of the Server Path field.

The Browse For Folder window appears:



2. Select the folder to monitor and click **OK**.

The Server Path fills in with the folder location.

3. Click **OK** to create the SmartBin.

NewsEdit now monitors the Media Import folder and imports new media to this bin automatically.



Chapter 7 SmartBins

Installing the NewsFTP Service

The NewsFTP Service is an FTP server that allows you to view the News database and serve up news assets as GXF files.

You can use the NewsFTP Service in two ways:

- Integrated with NewsBrowse
- As an archive system—You can view the News database and transfer clips from location to another using an FTP client

The NewsFTP service installs on an XRE computer that's part of your NewsroomSuite system.

NOTE: If you have installed the SmartBins Service and selected the SmartBins Encoder option, the NewsFTP Service is already installed. See “Installing the SmartBins Service” on page 55 for details.



Chapter 8 *Installing the NewsFTP Service*

To install the NewsFTP software:

1. Insert the NewsroomSuite CD into your CD drive and navigate to the NewsFTP folder.
2. Double-click on **SetupNewsFTP.exe**.
3. Install the software following these instructions:

On this screen...	Do this...
Welcome	Click Next .
Select Destination Directory	Leave set at the default location and click Next .
Select Domain Security	If you want to use security on your shared database, check Domain Security and click Next .
Specify the Servers for the Shared Database	Enter the names of the primary and secondary (if applicable) servers for your shared storage system: <ul style="list-style-type: none">• For a K2 system, enter the name of the K2 Media Server• For a NAS system, enter the name of the Database System Manager (DSM)• For an Open SAN system, enter the names of the File System Managers (FSMs)
Specify Directory for Shared Video and Audio Files	Leave set at the default location and click Next .
Specify Directory for AV Cache Files	Leave set at the default location and click Next .
Specify the shared drive(s) in use with this system	Enter the drive letter(s) of the drives you are using on the shared system. Separate multiple drives with commas, such as V,W,X.
Ready to Install	Click Next to begin the installation.
Installation Complete	Click OK to close the installation program. The computer prompts you to reboot so the new settings take effect.

NOTE: When uninstalling the NewsFTP or SmartBins Services on the NewsBrowse Advanced Encoder, you must reinstall both in order to get back up to a functioning state. Both applications rely on synchronous files that are shared; therefore, the removal of one also results in the removal of the other.

Configuring Your System

Before you can use your NewsEdit, FeedClip, or NewsQ system, you need to configure some basic settings.

This chapter discusses how to:

- Modify the host table file
- Set up media files for sharing
- Set up the NewsEdit Bin



Setting Up the Host Table

The host table is a file that resides on the NewsroomSuite computer. This file resolves names of NewsroomSuite computers and Profile servers with their IP addresses. NewsEdit uses this file to make sure that clips sent between NewsEdit workstations or to Profile servers are sent using TCP/IP.

A sample hosts file looks like this:

```
# Copyright (c) 1993-1999 Microsoft Corp.
#
# This is a sample HOSTS file used by Microsoft TCP/IP for Windows.
#
# This file contains the mappings of IP addresses to host names. Each
# entry should be kept on an individual line. The IP address should
# be placed in the first column followed by the corresponding host name.
# The IP address and the host name should be separated by at least one
# space.
#
# Additionally, comments (such as these) may be inserted on individual
# lines or following the machine name denoted by a '#' symbol.
#
# For example:
#
#       102.54.94.97       rhino.acme.com          # source server
#       38.25.63.10      x.acme.com            # x client host

150.234.187.36  VMAN2_MAN_Broker_fc0
10.16.56.179   GV004739_fc0
150.234.187.21  PVS100000_fc0
150.234.187.22  VMAN2_PVS1000_fc0
150.234.187.23  vman2_pvs1000_fc0
150.234.187.31  VMAN_DEMO1_FC0
150.234.187.32  DEMONEWSEEDIT2_FC0
150.234.187.33  VMAN_DEMO3_FC0
150.234.187.34  VMAN_DEMO4_FC0
150.234.187.35  GV006906_fc0
150.234.187.36  VMAN2_GV011265_FC0
150.234.187.37  VMAN_PRO6_FC0
150.234.187.38  VMAN2_DEMO5
150.234.187.42  vman2_xre1650_fc0
150.234.187.43  vman_NE6_fc0
150.234.187.34  VMAN2_DEMO4_fc0
150.234.187.110 PDR200_2_fc0
10.16.56.174   nbclient
```

On each NewsroomSuite system, set up the hosts files:

1. Open the following file using Notepad, or some other text editor.
C:\WINNT\System 32\Drivers\etc\hosts
2. Enter text in a single line for each NewsroomSuite computer and Profile server on your network, as follows:

Type the IP address, then use the TAB key or Space bar to insert a few spaces. Then type the machine name, such as NewsEdit1 followed by the characters _XXX to specify network type, as indicated:

Characters	Network Type
FC0	Fibre Channel
HE0	Gigabit Ethernet
LE0	Ethernet

Be sure to use the zero character, not the letter ‘o’.

3. Save the file and exit the text editor.
4. Copy the new hosts file onto all the other NewsEdit machines so you don’t have to edit each file separately.

Setting Up Media Files for Sharing

Before you can transfer media files to another NewsEdit workstation, you need to set up your computer for sharing. Your system may already be set up for sharing.

To share files:

1. In Windows Explorer, open the drive where your media files will be stored, usually drive D:.
2. Right click on the VibrintAVFiles folder and choose **Sharing**.
3. Choose the **Shared As** option button and leave the default share name **VibrintAVFiles**.
4. Click **OK**.

The folder you shared appears with the standard Windows sharing icon.



VibrintAVFiles



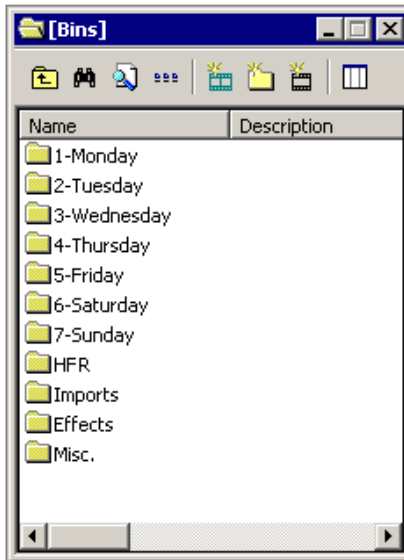
Setting Up the NewsEdit Bin

The Bin window is empty when you open NewsEdit for the first time. Before you can begin using NewsEdit, you need to create bins to store your work. You can create and organize your bins to suit your work style. For instance, you could create a bin for each day of the week and within those set up a bin for each individual story or for each editor.

Organizing Your Bins

There are several ways to organize your bins, and the organization you choose depends mostly on your job function as well as your organizational style.

A typical setup for a newsroom might be:



Bins **1-Monday through 7-Sunday** are used for everyday stories.

Bin **HFR** (Hold For Release) is used when you are editing a story on one day but airing it on another.

Bin **Imports** is set up as a single location where other NewsEdit workstations can send clips over the network to you.

Bin **Effects** holds saved video effects.

Bin **Misc.** is a folder to hold any clips to be saved, such as Whiteflash, Black, Color Bars and Tone, Reporter Outcues, repeated effects, etc.

It is also important that, within each day of the week, you create another bin with the title of the specific project you are working on. This helps to keep the bins organized, especially if you have more than one editor working on the same NewsEdit system.

NewsEdit automatically monitors your bins and refreshes the display if anyone places a file in one of your bins. For instance, as a breaking story develops, station staff can place the latest footage in a given directory. It then appears in your Bin where you can use it in your sequence.

To refresh your Bin manually, press **F5** or select **View | Refresh**.

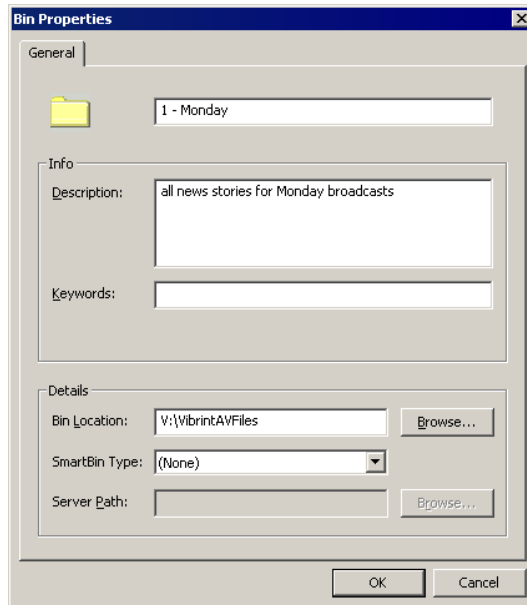
Creating a New Bin

To create a new bin:



1. In NewsEdit, click the **New Bin** button on the Bin toolbar.

The Bin Properties window appears:



2. Enter the bin Name.
3. Enter a bin Description.
4. Enter bin Keywords if desired.

You can use keywords to search for a specific bin.

5. Click **Browse** and select a location for the Bin, if different from the default
6. Click **OK**.

If you want to create a SmartBin, see “Creating SmartBins in NewsEdit” on page 73.



Chapter 9 Configuring Your System

Configuring NewsEdit Options

Before you can successfully use NewsEdit, you need to configure it for the particular equipment in your newsroom.

This chapter discusses how to:

- Add video sources to NewsEdit
- Set options for your newsroom



Default Configuration Settings

Your NewsEdit software sets most configuration options to a default value, as listed below:

Option	Configuration Item	Default Value
Add Source/General	Source Name	<<blank>>
	Description	<<blank>>
	Source Type	Video Source
.../Connections	Video Input	Composite
	Audio Input	Balanced Analog
	Deck Protocol	No remote deck controls
	Comm Port	<<grayed out>>
.../Record Channels	Video	✓
	Channel 1 Audio	A1
	Channel 2 Audio	A2
	Channel 3 Audio	A3
	Channel 4 Audio	A4
.../Preroll	Get Preroll From Deck	✓
	Preroll	3 seconds
	Aux Preroll	3 seconds
.../Record Handles	In Handles	1 second
	Out Handles	1 second

Default Configuration Settings

Option	Configuration Item	Default Value	
Tools/Options/General	Video Format	NTSC	
	Has Setup	✓	
	Database Connection Mode	Local	Dependent on software installation choice
		Shared	
	Default Bins Location	Dependent on software installation choice; for a Local system, usually D:\VibrintAVFiles or E:\VibrintAVFiles, for a Shared system, usually V:\VibrintAVFiles	
	NTSC Timecode	SMPTE - Drop Frame	
	Prompt Before Deleting Items	✓	
	Reserve COM1 and COM2 for GPIO	off	
	Test for Invalid Video Server Characters	off	
Map Hot Keys For Non-QWERTY Keyboards	off		
.../Video Settings	Compression Type	NewsEdit XT: MPEG2 NewsEdit LT/SC: DV25	
	Bit Rate	NewsEdit XT: 16 mbits NewsEdit LT/SC: 25 mbits	
	Chroma Format	NewsEdit XT: 4:2:2 NewsEdit LT/SC: 4:1:1	
	Video Aspect	4:3	
	Video Resolution	720x480	
	Mix MPEG & IMX Compression Types	off	
	Use Tape ID	off	



Chapter 10 *Configuring NewsEdit Options*

Option	Configuration Item	Default Value	
.../Output (NewsEdit XT only)	Video Connections	Composite	
	Audio Connections	Balanced Analog	
	Video Output to VGA	Composite	
.../Workgroup	Share Name	VibrinAVFiles	
.../Send		<<None set up>>	
.../Handles	Handle Type	Import	1 second
		Export	1 second
		Trimmer	10 seconds
		Consolidation	10 seconds
		Render	1 second
.../Timeline	Audio Input	A1 to A8	1+2
	Undo/Redo Limit		32
	Default Play Speed		200%
	Review Edit Duration		3 seconds
	Output Channels		2 or 4 Based on Breakout Box
.../Graphics	Initial Duration		5 seconds
	Fade In		10 frames
	Fade Out		10 frames
	Templates Folder		C:/LyricDemo
	Enable Right to Left Mode		off
.../Controller	422 Controller Comm Port		None
	USB Controller Comm Port (2)		None

Default Configuration Settings

Option	Configuration Item		Default Value
.../NewsQ Pro	Primary Database	Server	localhost
		Ports	2000/2001
	Backup Database	Server	<<blank>>
		Ports	2002/2003
	Thumbnails	Server	localhost
		Path	C:\
	Categories		All
	Background Row Color		<<as is>>
	Text Row Color		<<as is>>



Adding Video Sources to NewsEdit

Before using footage from a particular source, you need to add the source to the NewsEdit source list. NewsEdit pre-installs two sources for you — a video source and a clip source:

- The video source, usually a tape deck, allows you to record footage directly into the Timeline or Bin.
- The clip source allows you to edit a clip as a Timeline source directly in the Bin, which is useful for large clips so you don't have to go back and forth from a tape deck. You only need one clip source; you don't have to create a new clip source for each clip you want to use.

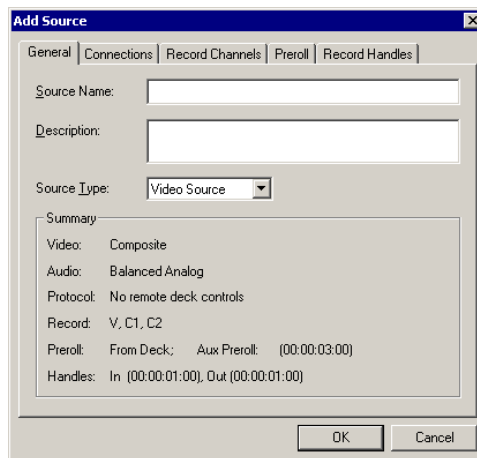
To add other sources to NewsEdit:

1. Choose **View | Sources**.

The Sources window appears, listing the currently configured sources.

2. Click **Add**.

The Add Source window appears:



3. Go through each Add Source tab to configure the new source.

The following sections describe each tab in the Add Source window.

4. Click **OK** when you are done setting up the new source.

Setting General Source Options

Setting	Options	Description
Source Name		Enter a name for the source, such as Tape Deck.
Description		Enter a description for the source.
Source Type	Video Source	Select Video Source for all incoming sources, including audio sources.
	Clip Source	Select Clip Source to use an existing clip in the bin as a source.
	Microphone	Select Microphone for any microphone sources.
	1394 Source	Select 1394 Source when connecting to a specific 1394 source if multiple IEEE devices are present.

Setting Connections

Setting	Options	Description
Video Input	Composite S-Video Component Serial D1 IEEE 1394	Select the Video Input option that corresponds to the source's connection to NewsEdit. The S-Video interface requires the Analog Breakout Box; the Serial Digital interface (SDI) requires the Pro Digital/Analog Breakout Box.
Audio Input	Balanced Analog Unbalanced Analog AES/EBU SDI/Embedded TDIFF IEEE 1394	Select the Audio Input option that corresponds to the source's connection to NewsEdit. The AES/EBU and SDI/Embedded options require the Pro Digital/Analog Breakout Box.
Deck Protocol	No remote deck controls Sony 422 Protocol Sony DNW-A100 DV 1394	Select the Deck Protocol that corresponds to the type of tape deck control you are using with NewsEdit. If you are adding a clip source, video router, or a non-video source, select No remote deck controls .
Comm Port	None COM1 - COM10	Select the Comm Port you are using to connect the source to NewsEdit.
Input Latency		Enter a duration to add an input latency when using a 1394 converter.
Number Loop Tones		Enter a duration to set how many seconds exist between loop record takes; each second a tone plays through the system speakers.



Setting Record Channels

Setting	Options	Description
Video		Check Video if you want to record video with this source.
Channel 1 Audio	A1 to A8	Check each audio channel that should record audio from this source and select the default audio track (A1–A8) on the Timeline to which you want the channel routed.
Channel 2 Audio	A1 to A8	
Channel 3 Audio	A1 to A8	
Channel 4 Audio	A1 to A8	

***NOTE:** Setting up a microphone source that does not record video (audio-only record) greatly reduces the required disk space.*

Setting Preroll

Setting	Description
Get Preroll From Deck	Check Get Preroll From Deck to use the preroll settings from your tape deck instead those configured in NewsEdit.
Preroll	Enter the number of seconds of preroll to use when recording from this source. This setting overrides the source's Preroll setting unless you check Get Preroll From Deck .
Aux Preroll	Enter the number of seconds of auxiliary preroll you want to use when using an auxiliary input or a non-remote source.

Setting Record Handles

Setting	Description
In Handles	Enter the number of seconds for the In and Out Handle length. Handles provide the extra frames necessary to trim or add transition effects at the head or tail of a clip. When you Mark In and Mark Out, NewsEdit begins recording the specified number of seconds before your Mark In and after your Mark Out. Only the material between your marks is edited to the Timeline.
Out Handles	

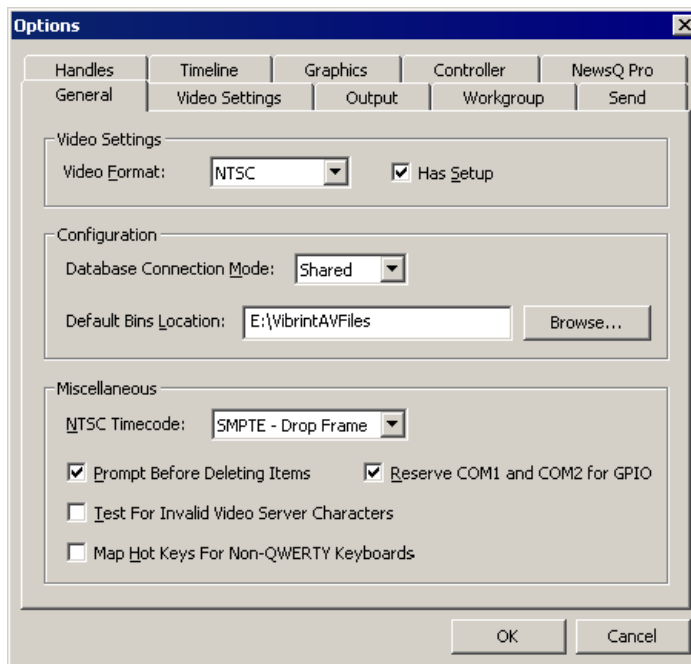
Setting Options for Your Newsroom

You need to configure NewsEdit for your particular newsroom equipment and workflow.

To configure your NewsEdit system:

1. Choose **Tools | Options**.

The Options window appears:



2. Go through each Options tab to configure NewsEdit.

The following sections describe each tab in the Options window.

3. Click **OK** when you are done configuring your system.



Setting General Options

Setting	Options	Description
Video Format	NTSC PAL	Select the Video Format you are using. NTSC has a frame rate of 29.97 frames/second and is used primarily in the Americas and Japan. PAL has a frame rate of 25 frames/second and is used in Europe, most of Asia, and Australia.
Has Setup	On Off	Check Has Setup if the analog composite signal carries setup information.
Database Connection Mode	Local Shared	Select Local if you are using local disk storage and a local NewsEdit database. You have access to files on your local machine only. Select Shared if you are using shared disk storage and a shared database. You share the Bin with all NewsEdit workstations that are part of the NewsShare network, according to security settings.
Default Bins Location		Enter the default path to your media files.
NTSC Timecode	SMPTE - Drop Frame	Recommended setting to avoid the time slipping problems associated with non-drop frame.
	SMPTE	Standard format used to represent timecode.
Prompt Before Deleting Items	On Off	Check this option to receive a confirmation prompt before deleting files.
Reserve COM1 and COM2 for GPIO	On Off	For NewsEdit XT only: Check this option to keep COM ports 1 and 2 available for an input device to control NewsEdit XT.
Test for Invalid Video Server Characters	On Off	Check this option to have NewsEdit check for invalid characters when creating files, including creating a new clip, creating a new sequence, renaming a Bin object, sending a sequence with a video ID, importing a P2 clip, and editing the name of the sequence when sending to another destination. Invalid characters are: * \ / < > : “ ? [] % & ‘
Map Hot Keys For Non-QWERY Keyboards	On Off	Check this option to have NewsEdit keep the color-coded hot key functions in place regardless of the keyboard input language; if unchecked, using a non-QWERTY keyboard causes the hot keys to follow the letter placement on the keyboard, changing the intended order.

Configuring Video Settings

Setting	Options	Description
Compression Type	MPEG2 DV25 DV50 IMX30 IMX40 IMX50	Select a Compression Type based on your newsroom preference. The DV50 and IMX formats are optional and may not be available on all systems.
Bit Rate	4-50 mbits	Enter the Bit Rate specified by your newsroom engineer. More than 25 mbits is optional.
Chroma Format	4:1:1	Select the 4:1:1 Chroma Format if you use DV25 compression.
	4:2:0	Select the 4:2:0 Chroma Format if you use MPEG2 compression.
	4:2:2	Select the 4:2:0 Chroma Format if you use DV50 or MPEG2 compression. 4:2:2 offers more color resolution than 4:2:0 with MPEG2.
Video Aspect	4:3	Select 4:3 Video Aspect for regular television format.
	16:9	Select 16:9 Video Aspect for wide-screen television format.
Video Resolution	720 x 512	Select for NTSC systems using MPEG2 compression.
	720 x 480	Select for NTSC systems using DV25, DV50, or MPEG2 compression. You must use 720 x 480 to transfer files to a Profile server.
	720 x 576	Select for PAL systems using DV25, DV50, or MPEG2 compression. You must use 720 x 576 to transfer files to a Profile server.
	720 x 608	Select for PAL systems using MPEG2 compression.
Mix MPEG and IMX Compression Types		Check this option to allow video clips of both MPEG and IMX compression types to be used on this NewsEdit XT system. If you are using IMX compression and sending clips to a Profile for storage and playout, the Profile Server converts the clips to MPEG compression. Therefore, you want to check this option so you can use these clips from the Profile Server at a later time.
Use Tape ID		Check this option to identify which source tape a particular clip came from; used in the Source Tool.



Setting Output Options (NewsEdit XT only)

Setting	Options	Description
Video Connections	Composite S-Video Component Serial D1	Select the Video Connection option that corresponds to the video source's connection to NewsEdit. The S-Video connection is for the Analog Breakout Box only. If you are using the Pro Digital/Analog Breakout Box, the Component Y output defaults to a second composite output unless you select Component Video .
Audio Connections	Balanced Analog Unbalanced Analog AES/EBU SDI Embedded TDIFF SPDIF	Select the Audio Connection option that corresponds to the audio source's connection to NewsEdit XT.
Video Output to VGA	Composite S-Video	Select the Video Output type for your VGA card.

Setting Up a Workgroup

In order for a NewsEdit workstation to pull media from other NewsEdit workstations, you need to set up a workgroup. Before setting up the workgroup, make sure all of the NewsroomSuite machines are powered on and logged in; otherwise, not all workstations will appear in the workgroup.

To set up a workgroup:

1. Verify that your Share Name matches the folder name you configured for Default Bins on the General Tab.

If your Default Bins folder has a different name than **VibrintAVFiles**, change it by typing the name in the Share Name field.

2. Click **Update Workgroup List**.

The system lists the available machines for file import or export.

3. Click **OK**.

In addition to setting up a workgroup, you also need to share your media folder to receive files from other NewsEdit workstations. See "Setting Up Media Files for Sharing" on page 81 for instructions.

Setting Up Send Locations

After completing a sequence you can send it to a playout machine or to a network video server. To send completed sequences or individual clips, you first need to configure NewsEdit with each of your send locations.

A send location can be another NewsEdit workstation, a Media Server, or a Bin you specify. If you want to store completed sequences on your computer, you can also add a send location for your PC.

To set up a send location:

1. Click **Add**.

The Add Named Destination to Send List window appears.

2. Enter the name of the send location.
3. Select the type of location from the drop-down list:

Send Type	Description
Vibrant	Select Vibrant when the send location is another NewsEdit, FeedClip, or NewsQ workstation, or a NewsQ Pro system.
Profile	Select Profile when the send location is a Profile Server, a K2 Server, or an M-Series iVDR.
Publish	Select Publish when you are using NewsQ Pro to control NewsQ in a shared environment.
SeaChange	Select SeaChange when the send location is a SeaChange server.
GXF ftp	Select GXF ftp to send the completed sequence as a GXF stream which can be used for a generic FTP site.
GXF file	Select GXF file to send the sequence as a GXF file; used to exchange files with other systems.
DV Video ES	Select DV Video ES to send the completed sequence as a DV video elementary stream; used for Publison NewsMix.



Chapter 10 *Configuring NewsEdit Options*

4. Configure the send location based on the location type:

Send Type	Option	Description
Vibrint	Use Video ID	Check Use Video ID if you will be linking to stories on a Newsroom Computer System (NRCS) that contain Video IDs. When you send a NewsEdit sequence to this location, the system uses the Video ID for the name of the file that gets sent.
	Include Graphics	Check Include Graphics if you want all graphics to remain with the sequence.
	Send to	Click Browse and select the file destination path.
Profile	Use Video ID	Check Use Video ID if you will be linking to stories on a Newsroom Computer System (NRCS) that contain Video IDs. When you send a NewsEdit sequence to this location, the system uses the Video ID for the name of the file that gets sent.
	Include Graphics	Check Include Graphics if you want all graphics to remain with the sequence.
	Send to	Open Media Manager, click on the desired destination directory, and drag the folder from Media Manager into this field.
	Host Name	Automatically fills in with the computer name for the Profile Video Server.
	User Name	Automatically fills in as movie ; leave as is.
	Password	Leave this field blank.
	NewsQ Pro Destination	Check NewsQ Pro Destination if this send location is a NewsQ Pro server.
	Send as LGOP	Check Send as LGOP to send the NewsEdit sequence as a GXF stream with MPEG2 LGOP compression. To adjust the MPEG options, click the Settings button.

Setting Up Send Locations

Send Type	Option	Description
Publish	Use Video ID	Check Use Video ID if you will be linking to stories on a Newsroom Computer System (NRCS) that contain Video IDs. When you send a NewsEdit sequence to this location, the system uses the Video ID for the name of the file that gets sent.
	Include Graphics	Check Include Graphics if you want all graphics to remain with the sequence.
	Send to	Click Browse and select the file destination path.
	Render All Effects	Check Render All Effects if you want all transitions and effects rendered before sending.
	NewsQ Pro Destination	Check NewsQ Pro Destination if this send location is a NewsQ Pro server.
SeaChange	Use Video ID	Check Use Video ID if you will be linking to stories on a Newsroom Computer System (NRCS) that contain Video IDs. When you send a NewsEdit sequence to this location, the system uses the Video ID for the name of the file that gets sent.
	Include Graphics	Check Include Graphics if you want all graphics to remain with the sequence.
	Send to	Click Browse and select the file destination path.
	Host Name	Enter the name of the server computer.
	User Name	Enter your user name.
	Password	Enter the password for the send location, if you have one.



Chapter 10 *Configuring NewsEdit Options*

Send Type	Option	Description
GXF FTP	Use Video ID	Check Use Video ID if you will be linking to stories on a Newsroom Computer System (NRCS) that contain Video IDs. When you send a NewsEdit sequence to this location, the system uses the Video ID for the name of the file that gets sent.
	Include Graphics	Check Include Graphics if you want all graphics to remain with the sequence.
	Send to	Click Browse and select the file destination path.
	Host Name	Enter the name of the server computer.
	User Name	Enter your user name.
	Password	Enter the password for the send location, if you have one.
	Send as LGOP	Check Send as LGOP to send the NewsEdit sequence as a GXF stream with MPEG2 LGOP compression. To adjust the MPEG options, click the Settings button.
GXF File	Use Video ID	Check Use Video ID if you will be linking to stories on a Newsroom Computer System (NRCS) that contain Video IDs. When you send a NewsEdit sequence to this location, the system uses the Video ID for the name of the file that gets sent.
	Include Graphics	Check Include Graphics if you want all graphics to remain with the sequence.
	Send to	Click Browse and select the file destination path.
	Send as LGOP	Check Send as LGOP to send the NewsEdit sequence as a GXF stream with MPEG2 LGOP compression. To adjust the MPEG options, click the Settings button.

Send Type	Option	Description
DV Video ES	Use Video ID	Check Use Video ID if you will be linking to stories on a Newsroom Computer System (NRCS) that contain Video IDs. When you send a NewsEdit sequence to this location, the system uses the Video ID for the name of the file that gets sent.
	Include EDL For Sequence	Check Include EDL for Sequence if you want an EDL of the sequence sent to the same destination folder as the DV video elementary stream.
	Send to	Click Browse and select the file destination path.
	NewsQ Pro Destination	Check NewsQ Pro Destination if this send location is a NewsQ Pro server.

- Click **OK**.
- On the Send tab, check the **GXF Sequence Transfer** box if you want to send sequences via GXF. If unselected, NewsEdit can send sequences to a Profile Server in an Open SAN system, without using a fiber channel IP connection.

Setting Handles

Setting	Description	
Handle Type	Import	Select Import when you are importing a file from another workstation to your own.
	Export	Select Export when you are exporting files from your workstation to another workstation or server.
	Trimmer	Select Trimmer when you are trimming a clip with the Trim Tool and trim the set duration from either side of your clip.
	Consolidation	Select Consolidation when you are consolidating a clip or sequence, which reduces the file size by removing unused footage.
	Render	Select Render when you are using media with effects and transitions; provides handles to effects that are mixed down.

To change the handle durations, select the handle type from the drop-down menu and enter the new duration in the In or Out fields.



Setting Timeline Options

Setting	Options	Description
Audio Output	1+2 3+4 All	Select the output routing for each audio channel and set its pan direction.
Undo/Redo Limit	1 - 1024	Enter the number of undo levels you want NewsEdit XT to track. <i>NOTE: Increasing the number of undo levels increases NewsEdit's system memory usage.</i>
Default Play Speed		Enter the speed at which to play clips when reviewing them in the Timeline. The default Play Speed is 200%.
Review Edit Duration		Enter the amount of preroll to play on a clip prior to playing the edit you're reviewing. The default Edit Duration is 3 seconds.
Output Channels	1-8	Select the number of output channels you are using.

Setting Graphics Options

Setting	Description
Initial Duration	Enter the initial duration for a graphic placed on the Timeline.
Fade In	Enter the number of frames over which the graphic fades in to the clip.
Fade Out	Enter the number of frames over which the graphic fades out to the next clip.
Editor	Indicates whether the Chyron plug-in is installed with the system.
Templates Folder	Enter the path to the Graphics template directory.
Enable Right to Left Mode	Check Enable Right to Left Mode to use the Title Tool with bidirectional languages, allowing users to enter text that reads from right to left.

Setting Controller Options

Setting	Options	Description
422 Controller Comm Port	None COM1 through COM10	If you are using an external controller with NewsEdit, select the COM port to which it is connected. Otherwise, select None.
USB Controller Comm Port		
USB Controller Comm Port		

Setting NewsQ Pro Options

It is recommended that you review the NewsQ Pro documentation before configuring NewsQ Pro options.

Setting	Description	
Primary Database	Server	Enter the server name where the primary NewsQ Pro database resides.
	Ports	Enter the port numbers used to access the primary NewsQ Pro database.
Backup Database	Server	Enter the server name where the secondary NewsQ Pro database resides.
	Ports	Enter the port numbers used to access the secondary NewsQ Pro database.
Thumbnails	Server	Enter the server name where NewsQ Pro stores video clip thumbnails.
	Path	Enter the path to the thumbnail directory.
Categories	Lists the currently configured NewsQ Pro categories. If you are using NewsQ Pro version 1.5 or later, you don't need to add categories here. Categories are set in the SDB Server options and propagated to NewsEdit. To add a category: Click Add , enter a category name, and click OK .	
Background Row Colors	Displays the Background and Text Rows in different colors to alert other editors that this sequence is being edited.	
Text Row Colors		



Chapter 10 Configuring NewsEdit Options

Configuring FeedClip Options

Before you can successfully use FeedClip, you need to configure it for the particular equipment in your newsroom.

This chapter discusses how to:

- Set options for your newsroom
- Configure record settings
- Configure playback settings
- Configure scheduler settings



Default Configuration Settings

Your FeedClip software sets most configuration options to a default value, as listed below:

Option	Configuration Item		Default Value
Tools/Options/General	Database Connection Mode	Local	Dependent on software installation choice
		Shared	
	Use House Clock		off
	NTSC Timecode		SMPTE - Drop Frame
	Prompt Before File Overwrite		✓
	Display Time Remaining for Playback		✓
	Test for Invalid Video Server Characters		off
	Delete Subclips When Removing Scheduled Feeds		✓
	Abort Time (Hours Remaining)		0.1 (6 mins)
	Channel		1
	.../Handles	Channel 1	Record Name
Playback Name			Channel 1
Channel 2		Record Name	Channel 2
		Playback Name	Channel 2
Edit Clips		In Handles	1 second
		Out Handles	1 second
Send to File	In Handles	1 second	
	Out Handles	1 second	
.../Workgroup	Share Name		VibrintAVFiles
.../Send			<<none set up>>
.../Colors			<<as is>>

Default Configuration Settings

Option	Configuration Item	Default Value	
.../Control Panel	422 Controller Comm Port	None	
.../NewsQ Pro	Primary Database	Server	localhost
		Ports	2000/2001
	Backup Database	Server	<<blank>>
		Ports	2002/2003
	Thumbnails	Server	localhost
		Path	C:\
	Categories		All
	Background Row Colors		<<as is>>
Text Row Colors		<<as is>>	
Record Settings/General	Video Format	NTSC	
	Has Setup	✓	
	Record To	E:/VibrintAVFiles	
	Create Files In Subfolders	✓	
	Bit Rate	16 mbits	
	Compression Type	MPEG2	
	Chroma Format	4:2:2	
	Video Resolution	720x480	
	Video Aspect	4:3	
.../Auto-Marking	Adjust Mark In by Reaction Time	Disabled — 1 second	
	Auto-Mark Out Clip From Duration	Disabled — 30 seconds	
.../Inputs	Video Source	Composite	
	Audio Source	Balanced Analog	



Chapter 11 *Configuring FeedClip Options*

Option	Configuration Item	Default Value
.../Outputs	Video Output	Composite
	Audio Output	Unbalanced Analog
.../Audio Channel Settings	Channel 1	✓
	Channel 2	✓
.../Automation	Protocol	None
	Comm Port	<None>
Playback Settings/General	Video Format	NTSC
	Has Setup	✓
	PreRoll	0
	Turn Off Audio During PreRoll	off
	PostRoll	0
	Turn Off Audio During PostRoll	off
.../Slow Motion	Enable Slow Motion Controls	✓
	Use Full Range in Speed Slider	✓
	Speed 1	0%
	Speed 2	50%
	Speed 3	75%
	Speed 4	100%
.../Genlock	Enable Genlock	off
	Horizontal Phase	0
	Subcarrier Phase	0
.../Outputs	Video Output	Composite
	Audio Output	Unbalanced Analog

Default Configuration Settings

Option	Configuration Item		Default Value
.../Automation	Protocol		None
	Comm Port		<None>
Schedule Settings/General	Add Recurring Entries	1-30 days	1 day
	Remove Entries After	1-365 days	3 days
	Enable Schedule Locking		off
.../Colors			<<as is>>



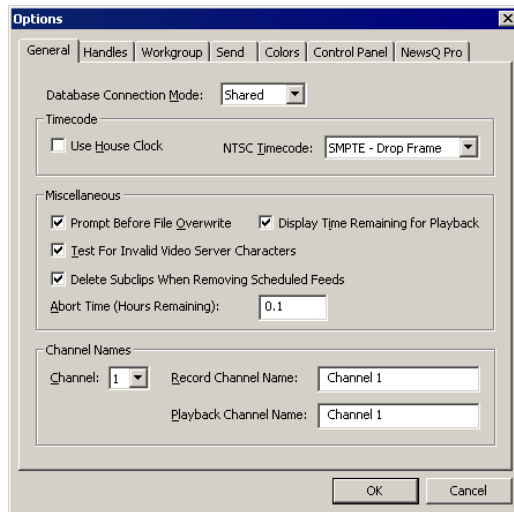
Setting Options for Your Newsroom

You need to configure FeedClip for the specific equipment you are using in your newsroom.

To configure your FeedClip system:

1. Choose **Tools | Options**.

The Options window opens:



2. Go through each tab on the Options window and configure FeedClip using the descriptions in the sections below.
3. Click **OK** when you are done configuring your system.

Setting General Options

Setting	Options	Description
Database Connection Mode	Local Shared	Select Local if you are using local disk storage and a local FeedClip database. You have access to files on your local machine only. Select Shared if you are using shared disk storage and a shared database. You share the Bin with all FeedClip workstations that are part of the NewsShare network.
Use House Clock	On Off	Check this if you want to have FeedClip use your newsroom's house clock to synchronize feeds. If you turn on this option without having a house clock connected, FeedClip uses the workstation's system clock for the timecode.
NTSC Timecode	SMPTE-Drop Frame	Recommended setting to avoid the time slipping problems associated with non-drop frame.
	SMPTE	Standard format used to represent timecode.
Prompt Before File Overwrite	On Off	Check this option to receive a confirmation prompt before overwriting existing files.
Display Time Remaining for Playback	On Off	Check this option to have FeedClip show you how much time is remaining while playing back a clip in the playlist.
Test for Invalid Video Server Characters	On Off	Check this option to have FeedClip check for invalid characters when creating files. Invalid characters are: * \ / < > : " ? [] % & '
Delete Subclips When Removing Scheduled Feeds	On Off	Check this option to allow any subclips that are created with a scheduled feed to be deleted when the scheduled feed is removed from the scheduler. If unchecked, a scheduled feed will not be deleted if any subclips are associated with the feed.
Abort Time (Hours Remaining)	N/A	Enter the amount of time (in hours) before recording stops; FeedClip stops recording when this amount of time is remaining for recording. The default time is 0.1.
Channel	1/2	Select the channel to name.
Record Channel Name	N/A	Enter a name for the record channel.
Playback Channel Name	N/A	Enter a name for the playback channel.



Setting Handles

You use Edit Clips handles when you want additional footage at the beginning and end of a clip for additional editing. The default duration is 5 seconds. You use Send to File handles when sending a clip or feed to another workstation or server. The default duration is 2 seconds.

If you want to change the handle duration, type the new number in the field.

Setting Up Your Workgroup

In order for your FeedClip workstation to be able to send media to other workstations or media servers, you need to set up a workgroup.

To set up a workgroup:

1. Make sure that your Share Name is **VibrintAVFiles**.
2. Click **Update Workgroup List**.

The system lists the available machines for file export.

3. Click **OK**.

In addition to setting up a workgroup, you also need to share your media folder in order to receive files from other FeedClip workstations. See “Setting Up Media Files for Sharing” on page 81 for instructions.

Setting Up Send Locations

Once you create a series of clips, you can send them to a NewsEdit workstation or to a network video server. To send completed sequences or individual clips, you first need to configure FeedClip with each of your send locations.

A send location can be a NewsEdit workstation, a Media Server, or a Bin you specify. If you want to store clips on your computer, you can also add a send location for your PC.

To set up a send location:

1. Click **Add**.

The Add Named Destination to Send List window appears.

2. Enter the name of the send location.

3. Select the type of location from the drop-down list.

Send Type	Description
Vibrint	Select Vibrint when the send location is another NewsEdit, FeedClip, or NewsQ workstation, or a NewsQ Pro system.
Profile	Select Profile when the send location is a Profile Server, a K2 Server, or an M-Series iVDR.
SeaChange	Select SeaChange when the send location is a SeaChange server.
GXF ftp	Select GXF ftp to send the completed sequence as a GXF stream which can be used for a generic FTP site.
GXF file	Select GXF file to send the sequence as a GXF file; used to exchange files with other systems.

4. Configure the send location based on the location type:

Send Type	Option	Description
Vibrint	Use Video ID	Check Use Video ID if you will be linking to stories on a Newsroom Computer System (NRCS) that contain Video IDs. When you send clips to this location, the system uses the Video ID for the name of the file that gets sent.
	Include Graphics	Check Include Graphics if you want all graphics to remain with the sequence.
	Send to	Click Browse and select the file destination path.



Chapter 11 *Configuring FeedClip Options*

Send Type	Option	Description
Profile	Use Video ID	Check Use Video ID if you will be linking to stories on a Newsroom Computer System (NRCS) that contain Video IDs. When you send clips to this location, the system uses the Video ID for the name of the file that gets sent.
	Include Graphics	Check Include Graphics if you want all graphics to remain with the sequence.
	Send to	Open Media Manager, click on the desired destination directory, and drag the folder from Media Manager into this field.
	Host Name	Automatically fills in with the computer name for the Profile Video Server.
	User Name	Automatically fills in as movie ; leave as is.
	Password	Leave this field blank.
	NewsQ Pro Destination	Check NewsQ Pro Destination if this send location is a NewsQ Pro server.
SeaChange	Send as LGOP	Check Send as LGOP to send the sequence as a GXF stream with MPEG2 LGOP compression. To adjust the MPEG options, click the Settings button.
	Use Video ID	Check Use Video ID if you will be linking to stories on a Newsroom Computer System (NRCS) that contain Video IDs. When you send clips to this location, the system uses the Video ID for the name of the file that gets sent.
	Include Graphics	Check Include Graphics if you want all graphics to remain with the sequence.
	Send to	Click Browse and select the file destination path.
	Host Name	Enter the name of the server computer.
	User Name	Enter your user name.
Password	Enter the password for the send location, if you have one.	

Setting Up Send Locations

Send Type	Option	Description
GXF FTP	Use Video ID	Check Use Video ID if you will be linking to stories on a Newsroom Computer System (NRCS) that contain Video IDs. When you send clips to this location, the system uses the Video ID for the name of the file that gets sent.
	Include Graphics	Check Include Graphics if you want all graphics to remain with the sequence.
	Send to	Click Browse and select the file destination path.
	Host Name	Enter the name of the server computer.
	User Name	Enter your user name.
	Password	Enter the password for the send location, if you have one.
	Send as LGOP	Check Send as LGOP to send the sequence as a GXF stream with MPEG2 LGOP compression. To adjust the MPEG options, click the Settings button.
GXF File	Use Video ID	Check Use Video ID if you will be linking to stories on a Newsroom Computer System (NRCS) that contain Video IDs. When you send clips to this location, the system uses the Video ID for the name of the file that gets sent.
	Include Graphics	Check Include Graphics if you want all graphics to remain with the sequence.
	Send to	Click Browse and select the file destination path.
	Send as LGOP	Check Send as LGOP to send the sequence as a GXF stream with MPEG2 LGOP compression. To adjust the MPEG options, click the Settings button.

5. Click **OK**.



Setting Colors

In the clip list, different colors indicate the status of clips. If you want to change any of the colors in the FeedClip interface:

1. Click the **Change...** button for the playlist row color you want to change.
The Color window opens.
2. Pick the new color and click **OK**.
3. Change other colors, if you wish.
4. Click **OK** when you are done.

Setting Controller Options

If you are using an external controller with FeedClip, select the 422 Controller Comm Port you are using.

Setting NewsQ Pro Options

Refer to the NewsQ Pro documentation before configuring NewsQ Pro options.

Setting		Description
Primary Database	Server	Enter the server name where the primary NewsQ Pro database resides.
	Ports	Enter the port numbers used to access the primary NewsQ Pro database.
Backup Database	Server	Enter the server name where the secondary NewsQ Pro database resides.
	Ports	Enter the port numbers used to access the secondary NewsQ Pro database.
Thumbnails	Server	Enter the server name where NewsQ Pro stores video clip thumbnails.
	Path	Enter the path to the thumbnail directory.
Categories		Lists the currently configured NewsQ Pro categories. If you are using NewsQ Pro version 1.5 or later, you don't need to add categories here. Categories are set in the SDB Server options and propagated throughout the system. To add a category, click Add , enter a category name, and click OK .
Background Row Colors		Displays the Background and Text Rows in different colors to alert other editors that this sequence is being edited.
Text Row Colors		

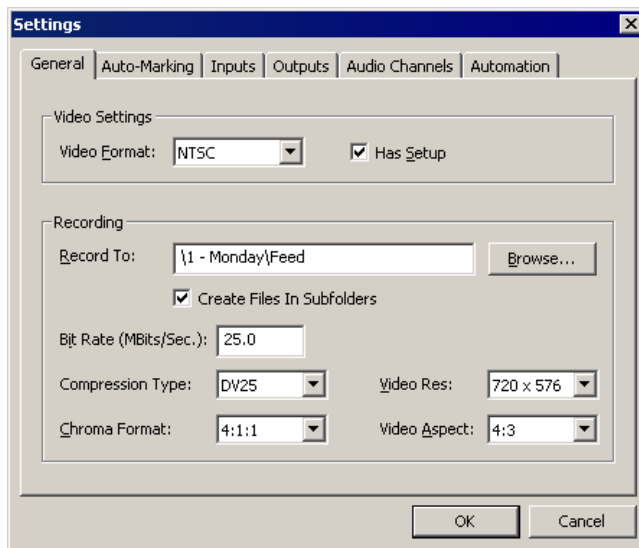
Configuring Record Settings

You need to configure FeedClip for the type of recording you are doing in your newsroom.

To configure your FeedClip system:

1. Click the **Settings...** button on the Record tab.

The Settings window opens:



2. Go through each tab on the Settings window and configure FeedClip using the descriptions in the sections below.
3. Click **OK** when you are done configuring your system.



General Settings

Setting	Options	Description
Video Format	NTSC PAL	Select the Video Format you are using. NTSC has a frame rate of 29.97 frames/sec and is used primarily in the Americas and Japan. PAL has a frame rate of 25 frames/sec and is used in Europe, most of Asia, and Australia.
Has Setup	On Off	Check Has Setup if the analog composite signal carries setup information.
Record To		Enter the default bin location for recorded media files.
Create Files In Subfolders	On Off	Check this option to have recorded feeds and associated subclips stored in a separate subfolder. If the Record To location for recorded files is a SmartBin, you must leave this checkbox unchecked. When the scheduler is enabled, this box is grayed out.
Bit Rate	4-50 mbits	Enter the Bit Rate specified by your newsroom engineer. More than 25 mbits is optimal. Set by news station engineer.
Compression Type	MPEG2 DV25 DV50 IMX30 IMX40 IMX50	Select a Compression Type based on your newstation preference. The DV50 and IMX formats are optional and may not be available on all systems.
Chroma Format	4:1:1	Select the 4:1:1 Chroma Format if you use DV25 compression.
	4:2:0	Select the 4:2:0 Chroma Format if you use MPEG2 compression.
	4:2:2	Select the 4:2:2 Chroma Format if you use DV50 or MPEG2 compression. 4:2:2 offers more color resolution than 4:2:0.
Video Resolution	720 x 480	Select for NTSC systems using DV25, DV50, or MPEG2 compression.
	720 x 512	Select for NTSC systems using MPEG2 compression.
	720 x 576	Select for PAL systems using DV25, DV50, or MPEG2 compression.
	720 x 608	Select for PAL systems using MPEG2 compression.
Video Aspect	4:3	Select 4:3 Video Aspect for regular television format.
	16:9	Select 16:9 Video Aspect for wide-screen television format.

Auto-Marking Settings

Setting	Description
Adjust Mark In by Reaction Time	Check this to have FeedClip adjust the Mark In by the reaction time you set. The default duration is 1 second.
Auto-Mark Out Clip From Duration	Check this to have FeedClip automatically create a Mark Out based on the duration of the clip. The default duration is 30 seconds.

Input Settings

Setting	Options	Description
Video Source	Composite S-Video Component Serial D1	Select the Video Source option that corresponds to the video source's connection to FeedClip. If you are using the Pro D&A Break Out Box, the Component Y output defaults to a second composite output unless you select Component Video.
Audio Source	Balanced Analog Unbalanced Analog AES/EBU SDI Embedded TDIFF	Select the Audio Source option that corresponds to the audio source's connection to FeedClip.

Output Settings

Setting	Options	Description
Video Output	Composite S-Video Component Serial D1	Select the Video Output option that corresponds to the video source's connection to FeedClip. If you are using the Pro D&A Break Out Box, the Component Y output defaults to a second composite output unless you select Component Video.
Audio Output	Balanced Analog Unbalanced Analog AES/EBU SDI Embedded TDIFF SPDIF	Select the Audio Output option that corresponds to the audio source's connection to FeedClip.



Audio Channel Settings

Check the boxes for each of the audio channels you are using for FeedClip input. For example, if you are using two channels make sure to deselect the other two.

Automation Settings

Setting	Options	Description
Protocol	None Odetics Control Protocol	Select Odetics Control Protocol if you are using an automation system, like NewsQ Pro, to control your FeedClip workstation; otherwise, select None .
Comm Port	None COM1 - COM10	If you are using the Odetics Control Protocol, select the COM Port to which it is connected.

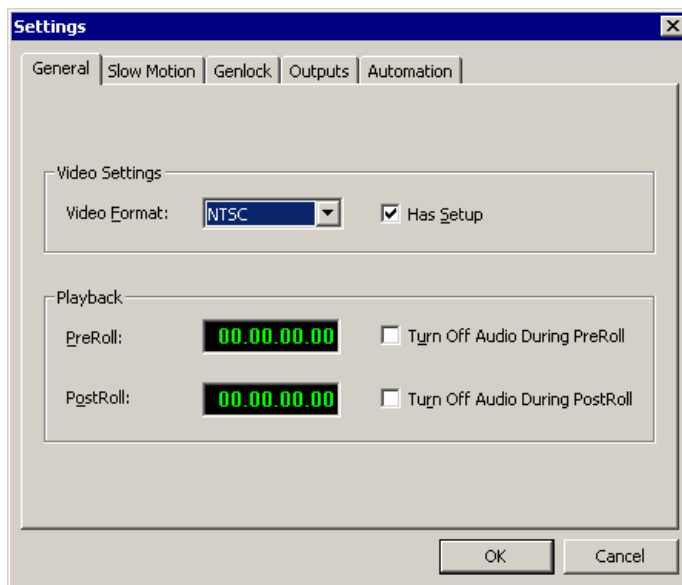
Configuring Playback Settings

You need to configure FeedClip for the type of playback you are using in your newsroom.

To configure your FeedClip system:

1. Click the **Settings...** button on the Playback tab.

The Settings window opens:



2. Go through each tab on the Settings window and configure FeedClip using the descriptions in the sections below.
3. Click **OK** when you are done configuring your system.



Chapter 11 Configuring FeedClip Options

General Settings

Setting	Options	Description
Video Format	NTSC PAL	Select the Video Format you are using. NTSC has a frame rate of 29.97 frames/sec and is used primarily in the Americas and Japan. PAL has a frame rate of 25 frames/sec and is used in Europe, most of Asia, and Australia.
Has Setup	On Off	Check Has Setup if the analog composite signal carries setup information.
PreRoll		Enter the number of seconds of preroll you want to use for playback of clips. The default duration is zero seconds.
Turn Off Audio During PreRoll	On Off	Check this option if you don't want to hear audio during preroll.
PostRoll		Enter the number of seconds of postroll you want to use when playing clips. The default duration is zero seconds.
Turn Off Audio During PostRoll	On Off	Check this option if you don't want to hear audio during postroll.

Slow Motion Settings

Setting	Options	Description
Enable Slow Motion Controls	On Off	Check this option to view clips in slow motion during playback.
Use Full Range In Speed Slider	On Off	Check this option to use the slider range of 0% to 100% instead of 0% to the selected top speed.
Speed 1 - Speed 4	0% to 100%	Enter the percentage speed for each of the four speeds. The speeds are on the Playback tab. The default speeds are: Speed 1 — 0% Speed 2 — 50% Speed 3 — 75% Speed 4 — 100%

Genlock Settings

Setting	Options	Description
Enable Genlock	On Off	Check this option to use Genlock with FeedClip. Genlock is the synchronization of two television signals at the vertical, horizontal, and chroma phase levels such that the signals may be cut, mixed, or cross-faded without noticeable roll, jump, or chroma shift.
Horizontal Phase	-5148 to +5148	Select the appropriate Horizontal Phase by moving the sliders, typing the number, or using the up and down arrows.
Subcarrier Phase	-180 to +180	Select the appropriate Subcarrier Phase by moving the sliders, typing the number, or using the up and down arrows.
Use Defaults		Click this button to return Genlock settings to their default positions.

Output Settings

Setting	Options	Description
Video Output	Composite S-Video Component Serial D1	Select the Video Output option that corresponds to the video source's connection to FeedClip. If you are using the Pro D&A Break Out Box, the Component Y output defaults to a second composite output unless you select Component Video .
Audio Output	Unbalanced Analog Balanced Analog AES/EBU SDI Embedded	Select the Audio Output option that corresponds to the audio source's connection to FeedClip.

Automation Settings

Setting	Options	Description
Protocol	None Odetics Control Protocol	Select Odetics Control Protocol if you are using an automation system, like NewsQ Pro, to control your FeedClip workstation; otherwise, select None .
Comm Port	None COM1 - COM10	If you are using the Odetics Control Protocol, select the COM Port to which it is connected.



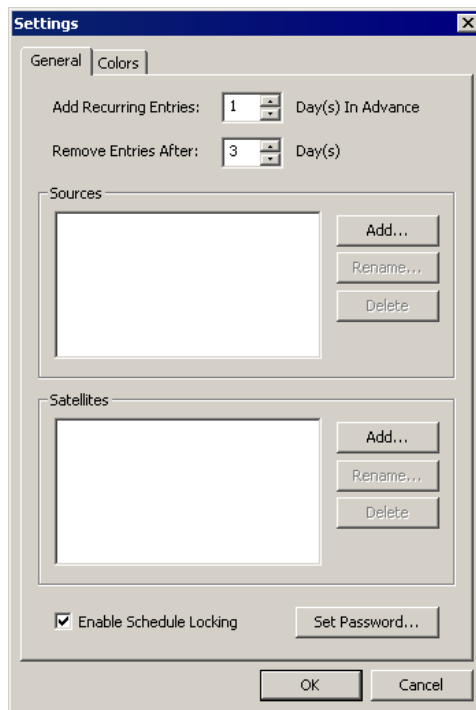
Configuring Scheduler Settings

You need to configure FeedClip for your scheduling preferences.

To configure your FeedClip system:

1. Click the **Settings...** button on the Scheduler tab.

The Settings window opens:



2. Go through each tab on the Settings window and configure FeedClip using the descriptions in the sections below.
3. Click **OK** when you are done configuring your system.

General Settings

Setting	Options	Description
Add Recurring Entries	1 - 30 days	Number of days to display recurring entries in the Record tab. The default duration is 1 day.
Remove Entries After	1 - 365 days	Number of days to keep recorded entries before deleting. The default duration is 3 days.
Enable Schedule Locking	On Off	Check this option to require a password to make changes to the FeedClip recording schedule. When you check this option, click Set Password and enter a password for this feature. Once set, a password is required to lock or unlock the scheduler.
Sources and Satellites		Lists the currently configured sources and satellites. If you need to add a new source or satellite to use with FeedClip: Click Add , enter a name for the new source, and click OK . The name of the source is a label to help you identify sources. Names do not affect functionality and are not required. You can also rename or delete a source or satellite by highlighting the source and clicking the Rename or Delete button.

Color Settings

In the scheduler list, different colors indicate the status of feeds. If you want to change any of the scheduling colors in the FeedClip interface:

1. Click the **Change...** button for the scheduling row color you want to change.
The Colors window opens.
2. Pick the new color and click **OK**.
3. If you wish, change other colors.
4. Click **OK** when you are done.



Chapter 11 Configuring FeedClip Options

Configuring NewsQ Options

Before you can successfully use NewsQ, you need to configure it for the particular equipment in your newsroom.

This chapter discusses how to:

- Set options for your newsroom
- Configure playback channel settings



Default Configuration Settings

Your NewsQ software sets most configuration options to a default value, as listed below:

Option	Configuration Item		Default Value
Tools/Options/General	Video Format		NTSC
	Has Setup		✓
	Database Connection Mode	Local	Dependent on software installation choice
		Shared	
	Default Bins Location		E:\VibrantAVFiles
	NTSC Timecode		SMPTE - Drop Frame
	Prompt Before Deleting Items		✓
	Test for Invalid Video Server Characters		off
Map Hot Keys For Non-QWERTY Keyboards		off	
.../Output	Video Connections		Composite
	Audio Connections		Balanced Analog
	Channels		1
.../Workgroup	Share Name		VibrantAVFiles
.../Send			<<None set up>>
.../Handles	Handle Type	Import	1 second
		Trimmer	10 seconds
		Consolidation	10 seconds
		Render	1 second

Default Configuration Settings

Option	Configuration Item		Default Value
.../NewsQ Pro	Primary Database	Server	localhost
		Ports	2000/2001
	Backup Database	Server	<<blank>>
		Ports	2002/2003
	Thumbnails	Server	localhost
		Path	C:\
	Categories		All
	Background Row Colors		<<as is >>
Text Row Colors		<<as is>>	
Playback Settings/GPIO	Enable Triggers		off
	Trigger	1 Channel	<None>
	Commands (First, Second, Third)		<None>
.../Genlock	Enable Genlock		off
	Horizontal Phase		0
	Subcarrier Phase		0
.../Automation	Protocol		None
	Comm Port		<None>
	Default Bin		<<blank>>



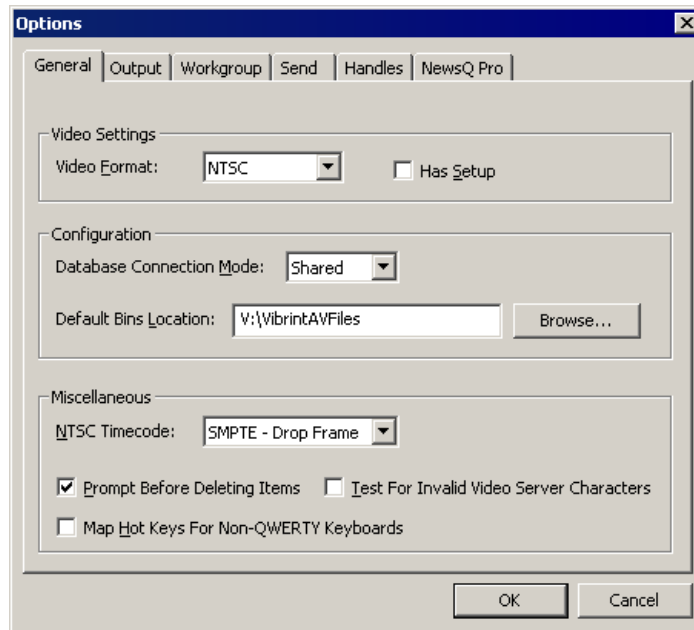
Setting Options for Your Newsroom

You need to configure NewsQ for the specific equipment you are using in your newsroom.

To configure your NewsQ system:

1. Choose **Tools | Options**.

The Options window opens:



2. Go through each tab on the Options window and configure NewsQ using the descriptions in the sections below.
3. Click **OK** when you are done configuring your system.

Setting General Options

Setting	Options	Description
Video Format	NTSC PAL	Select the Video Format you are using. NTSC has a frame rate of 29.97 frames/second and is used primarily in the Americas and Japan. PAL has a frame rate of 25 frames/second and is used in Europe, most of Asia, and Australia.
Has Setup	On Off	Check Has Setup if the analog composite signal carries setup information.
Database Connection Mode	Local Shared	Select Local if you are using local disk storage and a local NewsQ database. You have access to files on your local machine only. Select Shared if you are using shared disk storage and a shared database. You share the Bin with all NewsQ workstations that are part of the NewsShare network.
Default Bins Location		Enter the default path to your media files.
NTSC Timecode	SMPTE - Drop Frame	Recommended setting to avoid the time slipping problems associated with non-drop frame.
	SMPTE	Standard format used to represent timecode.
Prompt Before Deleting Items	On Off	Check this option to receive a confirmation prompt before deleting files. The default is On.
Test for Invalid Video Server Characters	On Off	Check this option to have NewsQ check for invalid characters when creating files, including creating a new clip, creating a new sequence, renaming a Bin object, sending a sequence with a video ID, and editing the name of the sequence when sending to another destination. Invalid characters are: * \ / < > : " ? [] % & ' `
Map Hot Keys For Non-QWERTY Keyboards	On Off	Check this option to have NewsEdit keep the color-coded hot key functions in place regardless of the keyboard input language; if unchecked, using a non-QWERTY keyboard causes the hot keys to follow the letter placement on the keyboard, changing the intended order.



Setting Output Options

Setting	Options	Description
Video Connections	Composite S-Video Component Serial D1	Select the Video Connection option that corresponds to the video source's connection to NewsQ. If you are using the Pro D&A Break Out Box, the Component Y output defaults to a second composite output unless you select Component video.
Audio Connections	Balanced Analog Unbalanced Analog AES/EBU SPDIF TDIFF SDI Embedded	Select the Audio Connection option that corresponds to the audio source's connection to NewsQ.
Channels	1 2	Select the channel for which you are currently setting output options.

Setting Up a Workgroup

In order for each NewsQ workstation to be able to pull media from other Digital News Production workstations, you need to set up a workgroup.

To set up a workgroup:

1. Make sure that your Share Name is **VibrintAVFiles**.
2. Click **Update Workgroup List**.

The system lists the available machines for file import or export. This may take several minutes while the network is searched.

3. Click **OK**.

In addition to setting up a workgroup, you also need to share your media folder in order to receive files from other workstations. See "Setting Up Media Files for Sharing" on page 81 for instructions.

Setting Up Send Locations

In addition to creating playlists, you can send a clip or sequence from your Bin to a playout machine or to a network video server. To send completed sequences or individual clips, you first need to configure NewsQ with each of the send locations you will use.

A send location can be a NewsEdit workstation, a Media Server, or a Bin you specify. If you want to store clips on your computer, you can also add a send location for your PC.

To set up a send location:

1. From the Send tab, click **Add**.

The Add Named Destination to Send List window appears.

2. Enter the name of the send location.
3. Select the type of location from the drop-down list.

Send Type	Description
Vibrint	Select Vibrint when the send location is another NewsEdit, FeedClip, or NewsQ workstation.
Profile	Select Profile when the send location is a Profile Server, a K2 Server, or an M-Series iVDR.
Publish	Select Publish when you want to send completed sequences directly to air; all material for playing to air goes to one location.
SeaChange	Select SeaChange when the send location is a SeaChange server.
GXF ftp	Select GXF ftp to send the completed sequence as a GXF stream which can be used for a generic FTP site.
GXF file	Select GXF file to send the sequence as a GXF file; used to exchange files with other systems.



Chapter 12 *Configuring NewsQ Options*

4. Configure the send location based on the location type:

Send Type	Option	Description
Vibrant	Use Video ID	Check Use Video ID if you will be linking to stories on a Newsroom Computer System (NRCS) that contain Video IDs. When you send a sequence to this location, the system uses the Video ID for the name of the file that gets sent.
	Include Graphics	Check Include Graphics if you want all graphics to remain with the sequence.
	Send to	Click Browse and select the file destination path.
Profile	Use Video ID	Check Use Video ID if you will be linking to stories on a Newsroom Computer System (NRCS) that contain Video IDs. When you send a sequence to this location, the system uses the Video ID for the name of the file that gets sent.
	Include Graphics	Check Include Graphics if you want all graphics to remain with the sequence.
	Send to	Open Media Manager, click on the desired destination directory, and drag the folder from Media Manager into this field.
	Host Name	Automatically fills in with the computer name for the Profile Video Server.
	User Name	Automatically fills in as movie ; leave as is.
	Password	Leave this field blank.
	NewsQ Pro Destination	Check NewsQ Pro Destination if this send location is a NewsQ Pro server.
Send as LGOP	Check Send as LGOP to send the sequence as a GXF stream with MPEG2 LGOP compression. To adjust the MPEG options, click the Settings button.	

Setting Up Send Locations

Send Type	Option	Description
Publish	Use Video ID	Check Use Video ID if you will be linking to stories on a Newsroom Computer System (NRCS) that contain Video IDs. When you send a sequence to this location, the system uses the Video ID for the name of the file that gets sent.
	Include Graphics	Check Include Graphics if you want all graphics to remain with the sequence.
	Send to	Click Browse and select the file destination path.
	Render All Effects	Check Render All Effects if you want all transitions and effects rendered before sending.
	NewsQ Pro Destination	Check NewsQ Pro Destination if this send location is a NewsQ Pro server.
SeaChange	Use Video ID	Check Use Video ID if you will be linking to stories on a Newsroom Computer System (NRCS) that contain Video IDs. When you send a sequence to this location, the system uses the Video ID for the name of the file that gets sent.
	Include Graphics	Check Include Graphics if you want all graphics to remain with the sequence.
	Send to	Click Browse and select the file destination path.
	Host Name	Enter the name of the server computer.
	User Name	Enter your user name.
	Password	Enter the password for the send location, if you have one.



Chapter 12 Configuring NewsQ Options

Send Type	Option	Description
GXF FTP	Use Video ID	Check Use Video ID if you will be linking to stories on a Newsroom Computer System (NRCS) that contain Video IDs. When you send a sequence to this location, the system uses the Video ID for the name of the file that gets sent.
	Include Graphics	Check Include Graphics if you want all graphics to remain with the sequence.
	Send to	Click Browse and select the file destination path.
	Host Name	Enter the name of the server computer.
	User Name	Enter your user name.
	Password	Enter the password for the send location, if you have one.
GXF File	Send as LGOP	Check Send as LGOP to send the sequence as a GXF stream with MPEG2 LGOP compression. To adjust the MPEG options, click the Settings button.
	Use Video ID	Check Use Video ID if you will be linking to stories on a Newsroom Computer System (NRCS) that contain Video IDs. When you send a sequence to this location, the system uses the Video ID for the name of the file that gets sent.
	Include Graphics	Check Include Graphics if you want all graphics to remain with the sequence.
	Send to	Click Browse and select the file destination path.
	Send as LGOP	Check Send as LGOP to send the sequence as a GXF stream with MPEG2 LGOP compression. To adjust the MPEG options, click the Settings button.

5. Click **OK**.

Setting Handles

Setting		Description
Handle Type	Import	Select Import when you are importing a file from another workstation to your own.
	Trimmer	Select Trimmer when you are trimming a clip with the Trim Tool and trim the set duration from either side of your clip.
	Consolidation	Select Consolidation when you are consolidating a clip or sequence, which reduces the file size by removing unused footage.
	Render	Select Render when you are using media with effects and transitions; handles provide additional media between clips in case you need it.

To change the handle durations, select the handle type from the drop-down menu and enter the new duration in the In or Out fields.

Setting NewsQ Pro Options

Setting		Description
Primary Database	Server	Enter the server name where the primary NewsQ Pro database resides.
	Ports	Enter the port numbers used to access the primary NewsQ Pro database.
Backup Database	Server	Enter the server name where the secondary NewsQ Pro database resides.
	Ports	Enter the port numbers used to access the secondary NewsQ Pro database.
Thumbnails	Server	Enter the server name where NewsQ Pro stores video clip thumbnails.
	Path	Enter the path to the thumbnail directory.
Categories		Lists the currently configured NewsQ Pro categories. If you are using NewsQ Pro version 1.5 or later, you don't need to add categories here. Categories are set in the SDB Server options and propagated throughout the system. To add a category, click Add , enter a category name, and click OK .
Background Row Colors		Displays the Background and Text Rows in different colors to alert other editors that this sequence is being edited.
Text Row Colors		



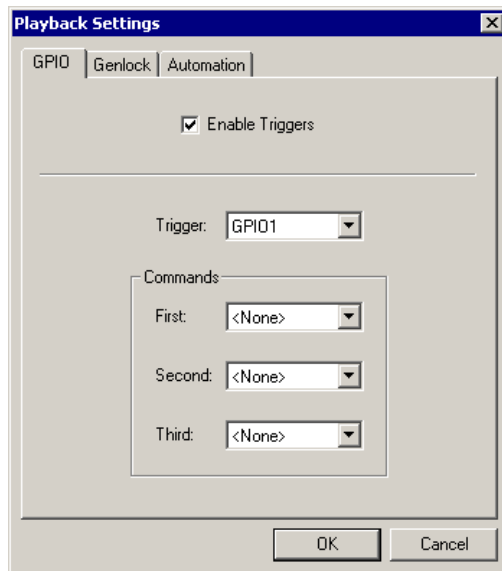
Configuring Playback Channel Settings

You need to configure NewsQ for the type of playback you are using in your newsroom.

To configure playback channel settings:

1. Click the **Settings** button on the Playback Channel window.

The Playback Settings window opens:



2. Go through both tabs and configure NewsQ using the descriptions in the sections below.
3. Click **OK** when you are done configuring playback channel settings.

Configuring GPIO Settings

General Purpose Interface (GPIO) inputs allow you to connect a switcher or other control device to the NewsQ system and use it as an input device to control the NewsQ software application.

For example, you set GPI01 to **Cue Selected** as the first function and **Play** as the second function. When you activate GPI trigger 1 on the controller, the selected clip will cue up and then play.

To reassign the function of any of the GPI inputs, select the GPI trigger number and the function you want the GPI to perform.

Setting	Options	Description
Enable Triggers	On Off	Check this option if you want to use GPI inputs to control the NewsQ software.
Trigger	Single-channel system: GPI01 - GPI06 Dual-channel system: GPI01 - GPI03 for Channel 1 GPI01 - GPI03 for Channel 2	Select the number of the GPI trigger you are configuring.



Chapter 12 *Configuring NewsQ Options*

Setting	Options	Description
First, Second, and Third Functions	<None>	No action selected.
	Re-Cue	Re-cues the currently selected clip in the playback list.
	Cue Next	Cues the next clip in the playback list.
	Cue Previous	Cues the previous clip in the playback list.
	Cue Selected	Cues the selected clip in the playback list.
	Play	Plays the cued clip.
	Reorder Down	Moves the selected clip down one space in the playback list.
	Reorder Up	Moves the selected clip up one space in the playback list.
	Select Next	Selects the next clip in the playlist.
	Select Previous	Selects the previous clip in the playlist.
	Stop	Stops playing a clip.

Configuring Genlock Settings

Setting	Options	Description
Enable Genlock	On Off	Check this option to use Genlock with NewsQ. Genlock is the synchronization of two television signals at the vertical, horizontal, and chroma phase levels such that the signals may be cut, mixed, or cross-faded without noticeable roll, jump, or chroma shift.
Horizontal Phase	-5148 to +5148	Select the appropriate Horizontal Phase by moving the slider, typing the number, or using the up and down arrows.
Subcarrier Phase	-180 to +180	Select the appropriate Subcarrier Phase by moving the slider, typing the number, or using the up and down arrows.
Use Defaults		Click this option to return Genlock settings to their default positions.

Configuring Automation Settings

Setting	Options	Description
Protocol	None Odetics Control Protocol	Select Odetics Control Protocol if you are using an automation system, like NewsQ Pro, to control your NewsQ workstation; otherwise, select None .
Comm Port	None COM3 through COM10	If you are using the Odetics Control Protocol, select the COM Port to which it is connected.
Default Bin		Enter the default path to your media files for playout.



Chapter 12 Configuring NewsQ Options

Pin Assignments

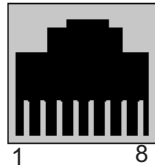
This appendix provides pin assignments for various connections to the NewsroomSuite computer workstation.



RJ-45 Connectors

Category 5 unshielded twisted pair (UTP) cable supports up to 100 megabits per second. The cable contains four twisted pairs of wires, for a total of eight wires.

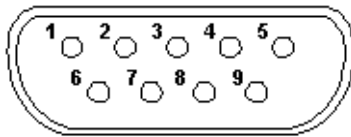
The four pairs of wires in UTP cable are color-coded so that they can be identified at each end of the cable. Typically, the pairs are made up of a solid color and the same color striped with white. The following illustration and table shows the standard pin configuration for an 8-pin RJ-45 connector.



Pin	Color Code
1	Orange/white stripe
2	Orange
3	Green/white stripe
4	Blue
5	Blue/white stripe
6	Green
7	Brown/white stripe
8	Brown

GPI Pin Assignments

There are 2 COM port connectors on the backplane of the NewsroomSuite computer, COM1 and COM2, which are located alongside the other motherboard connectors. Both COM ports are generally used for the NewsQ application but can also be used with NewsEdit XT. See the User Guide for setting up the GPI Commands in relationship to the pins shown in the illustration and table below.



Pin	COM1 Function	COM2 Function
1	-	-
2	-	-
3	-	-
4	-	-
5	Chassis Ground	Chassis Ground
6	IN 2	IN 5
7	+12V	+12V
8	IN 1	IN 4
9	IN 3	IN 6

Provide +5 to +24 volts to an input to trigger.



Appendix Pin Assignments

Field Replacable Parts

This appendix lists those parts in the NewsroomSuite system that can be replaced. The following table lists each part, including the Thomson Grass Valley order number, and a description of the part. The parts listed in this table are the parts that you can order from Thomson Grass Valley and replace on-site.



Appendix *Field Replacable Parts*

Part Number	Description	Notes
Codecs and Breakout Boxes		
115-0007-xx	Board, Targa 3100-50-OEM Dual DVX-MX50 Codec	50Mbit
115-0006-xx	Board, Targa 3100-25-OEM Dual DVX-MX25 Codec	25Mbit
115-0048-xx	TARGA 3D DVE Option board	3D daughter board; works with DNP V4.5 and greater
116-0975-xx	EQPT, Digital & Analog I/O Interface, Breakout Box	Pro Digital/Analog
116-0973-xx	EQPT, Analog I/O Interface, Breakout Box	Pro Analog
630-0111-xx	Digital/Analog Breakout Box rackmount kit	Purchasable item
620-0072-xx	PWR SPLY,85-265VAC IEC	Power supply for Pro Digital/Analog Breakout Box
Media Drives		
Media Drives for Tower and Vibrint Legacy (Black) Rack Systems		
117-0003-xx	EQPT, 18GB DRIVE OPTION	18Gb Drive (IBM)
117-0056-xx	EQPT, 36GB 68PIN ULTRA	36GB Drive (IBM)
117-0005-xx	EQPT, 72GB DRIVE OPTION	72Gb Drive (Seagate)
119-8027-xx	EQPT, DISK DRIVE 181GB	181Gb Drive (Seagate)
117-0038-xx	EQPT, DISK DRIVE 146GB	146GB Drive
Media Drives for "M" Chassis Rackmount Systems		
119-8168-xx	36G ULTRA320 SCSI 80 PIN	Current 36GB drive for Mango Chassis
117-0026-xx	EQPT, RAID DRIVE 73GB	73GB drive
117-0037-xx	HARD DRIVE, 146GB 80PIN LVD	146GB drive
Included in Rack and Tower Systems		
115-0035-xx	ATI ALL-IN-WONDER RADEON	VGA Card (NewsEdit XT only)

Part Number	Description	Notes
115-0016-xx	SCSI Controller (Adaptec)	LVD SCSI Controller
119-8075-xx	DISK DRIVE 41.6G IDE	System drive for NewsEdit XT and SC, FeedClip, NewsQ
156-9150-xx	IC, SDRAM MODULE 128M 133MHZ 168 PIN	128meg memory
156-9151-xx	IC, UP BX80526C866256E	866Mhz Pentium III
620-0022-xx	PWR SPLY, 90-264VAC 450W	For "M" Chassis Rack systems
620-0028-xx	PWR SPLY, 95-132/180-264VAC 400W ATX	For Vibrint Legacy (Black) Rack System only
117-0059-xx	PC POWER SUPPLY 480W	For Tower System only
119-8154-xx	CD ROM Drive	M-Chassis CDRom works in old towers also
119-8032-xx	EQPT, DRIVE 1.44 Floppy Drive	For Rack System only
119-8034-xx	EQPT, DRIVE 1.44 Floppy Drive TEAC	For Tower System only
117-0002-xx	NewsEdit PC keyboard	4.0 and above systems

Options

115-0012-xx	BRD, INT ERNAL 64-BIT FIBRE ADAPTER	Emulex Fibre channel card
11-50040-xx	EQPT, DUAL CHANNEL FIBRE ADAPTER	Q logic 2 port FC Card (used in NewsShare systems)
116-0972-xx	2-Port RS-422 SMPTE	Control 422 card
11-60983-xx	JL Cooper External Jog shuttle controller	Works with V4.0 and above.
116-0983-xx	EQPT, ES-450 UNIVERSAL Power Supply	For JL Cooper Controller & Fader
115-0048-xx	TARGA 3D DVE OPT	3-D DVE option board for the Targa board



Appendix Field Replacable Parts

Index

A

- adding NewsEdit sources 90
 - connections 91
 - general options 91
 - preroll 92
 - record channels 92
 - record handles 92
- ATI Input Adapter
 - connecting directly to system 32
 - connecting to external monitor 33
- audio mixer, connecting to system 36
- audio/video cables, connecting to BOB 34
- auto-marking, FeedClip 119
- automation
 - FeedClip playback 123
 - FeedClip recording 120
 - NewsQ 141

B

- Bin
 - creating 83
 - organizing 82
 - setting up in NewsEdit 82
- Breakout Box
 - connecting audio & video cables 34
 - connecting Pro Analog 32
 - connecting Pro Digital/Analog 32
 - connecting to system 32
 - description 19

C

- cabling
 - connecting audio & video to BOB 34
 - connecting audio mixer 36
 - connecting system 30
 - guidelines 28
 - keyboard and mouse 31
 - VTR 34
 - XenaSD board, breakout box 38
- certifications 12
- colors, FeedClip 116
- COM port for external controller
 - assigning 45
 - verifying 44
- comparing NewsEdit products 20
- compliances 12
- computer monitor, connecting 31
- computer, part of XT family 18
- configuring FeedClip
 - colors 116
 - controller options 116
 - default settings 106
 - general options 111
 - handles 112
 - NewsQ Pro options 116
 - playback 121
 - record 117
 - scheduler 124
 - send locations 112
 - workgroup 112
- configuring NewsEdit
 - controller options 103
 - default settings 86



- general options 94
 - graphics options 102
 - handles 101
 - NewsQ Pro options 103
 - output options 96
 - send locations 97
 - sharing media files 81
 - timeline options 102
 - video settings 95
 - workgroup 96
 - configuring NewsEdit video sources
 - connections 91
 - general options 91
 - preroll 92
 - record channels 92
 - record handles 92
 - configuring NewsQ
 - default settings 128
 - general options 131
 - handles 137
 - NewsQ Pro options 137
 - output options 132
 - playback channel 138
 - send locations 133
 - workgroup 132
 - configuring NewsroomSuite
 - host table 80
 - NewsEdit Bin 82
 - sharing media files 81
 - configuring SmartBins Service 71
 - connecting
 - external controller 43
 - keyboard and mouse cables 31
 - network cables
 - Ethernet 33
 - Fibre Channel 33
 - power cable 31
 - system cables 30
 - XenaSD board, breakout box 38
 - connections, setting for new source 91
 - controller options
 - FeedClip 116
 - NewsEdit 103
 - creating new bin 83
 - criteria, environmental 15
- D**
- default configuration settings
 - FeedClip 106
 - NewsEdit 86
 - NewsQ 128
 - DNP workgroup layout 24
- E**
- Effects Controller, connecting to
 - NewsEdit 43
 - enabling SDI output 40
 - environmental
 - criteria 15
 - requirements 27
 - Ethernet
 - connecting cables 33
 - networking requirements 27
 - external controller
 - assigning COM port 45
 - connecting to NewsEdit 43
 - description 42
 - verifying COM port 44

F

- Fibre Channel
 - connecting cables 33
 - network requirements 27
- files, sharing 81

G

- general options
 - FeedClip 111
 - NewsEdit 94
 - NewsQ 131
 - setting for new source 91
- Genlock
 - FeedClip 123
 - NewsQ 141
- GPIO, NewsQ 139
- graphics options, NewsEdit 102
- guidelines
 - cabling system 28
 - safety 9

H

- handles
 - FeedClip 112
 - NewsEdit 101
 - NewsQ 137
- host table, setting up 80

I

- installing software
 - NewsFTP 77
 - NewsroomSuite 56
 - local storage system 57

- shared storage system 58
- Profile 54, 68
- SmartBins 67
- SmartBins Service 69
- software license number 60, 70
- installing XenaSD
 - control panel 39
 - driver 39

J

- Jog/Shuttle Controller, connecting to NewsEdit 43

K

- K2 SmartBins 65
- K2, configuring SmartBins for 68
- keyboard, used with NewsroomSuite 19

L

- launching applications 52
- layout, workgroup 24
- license number for software 60, 70
- local storage software installation 57

M

- Media Import SmartBin, creating 75
- Motorized Fader Controller, connecting to NewsEdit 43



N

NAS SmartBins 65

NAS, mounting volume 67

network cables, connecting 33

networking requirements 27

 Ethernet Switch 27

 Fibre Channel 27

NewsEdit

 comparing products 20

 connecting external controller 43

 creating SmartBins 73

 external controllers 42

 setting up Bin 82

NewsEdit LT, description of 21

NewsEdit SC

 description of 21

 enabling SDI output 40

 XenaSD board, breakout box 38

NewsFTP service, installing 77

NewsQ Pro options

 FeedClip 116

 NewsEdit 103

 NewsQ 137

NewsroomSuite

 installing software 56

 launching applications 52

 storage options 23

O

Open SAN SmartBins 62

options

 FeedClip

 colors 116

 controller 116

 default settings 106

 general 111

 handles 112

 NewsQ Pro 116

 playback 121

 record 117

 scheduler 124

 send locations 112

 workgroup 112

NewsEdit

 controller 103

 default settings 86

 general 94

 graphics 102

 handles 101

 NewsQ Pro 103

 output 96

 send locations 97

 timeline 102

 video settings 95

 workgroup 96

NewsQ

 default settings 128

 general 131

 handles 137

 NewsQ Pro 137

 output 132

 playback channel 138

 send locations 133

 workgroup 132

 sharing media files 81

options for storage 23

organizing Bin 82

output options

NewsEdit 96
NewsQ 132

P

playback channel settings, NewsQ
 automation 141
 Genlock 141
 GPIO 139
playback settings, FeedClip
 automation 123
 general 122
 Genlock 123
 output 123
 slow motion 122
power cable, connecting 31
power requirements 26
powering up system 48
 rackmount system 48
 standalone system 48
precautions 9, 10
preroll, setting for new source 92
Pro Analog Breakout Box, connecting
 32
Pro Digital/Analog Breakout Box, connecting
 32
product support 7
Profile
 installing software 54, 68

R

rackmount system, powering on 48
record channels, setting for new source
 92
record handles, setting for new source 92

record settings, FeedClip
 audio channel 120
 auto-mark 119
 automation 120
 general 118
 input 119
 output 119
requirements
 environmental 27
 networking 27
 power 26
 site 26
 synchronization 27

S

safety guidelines 9
scheduler settings, FeedClip
 color 125
 general 125
send locations
 FeedClip 112
 NewsEdit 97
 NewsQ 133
service safety 11
setting up
 FeedClip, See configuring FeedClip
 host table 80
 NewsEdit Bin 82
 NewsEdit, See configuring
 NewsEdit
 NewsQ, See configuring NewsQ
 sharing media files 81
shared storage software installation 58
sharing media files 81



Index

- site requirements 26
 - slow motion, FeedClip 122
 - SmartBins
 - configuring service for NAS, K2 71
 - configuring SmartBins for K2 68
 - creating in NewsEdit 73
 - description 62
 - installing SmartBins Service 69
 - installing software 67
 - K2 system 65
 - Media Import SmartBin 75
 - mounting NAS volume 67
 - NAS 65
 - Open SAN 62
 - Video Server SmartBin 74
 - software license number, obtaining 60, 70
 - software, installing
 - local storage 57
 - NewsroomSuite 56
 - Profile 54, 68
 - shared storage 58
 - SmartBins Service 69
 - software, NewsroomSuite 20
 - sources, in NewsEdit
 - See video sources, NewsEdit
 - standalone system, powering on 48
 - storage options 23
 - support 7
 - synchronization requirements 27
 - system cables, connecting 30
 - ATI Input Adapter 32
 - connecting directly to system 32
 - using external monitor 33
 - Breakout Box 32
 - computer monitor 31
 - network cables 33
 - power cable 31
 - VTR 34
 - system self test
 - description 49
 - running manually 50
 - troubleshooting 51
 - system, powering on 48
- T**
- technical support 7
 - timeline options, NewsEdit 102
- V**
- Video Server SmartBin, creating 74
 - video setting options, NewsEdit 95
 - video sources, NewsEdit
 - adding 90
 - connections 91
 - general options 91
 - preroll 92
 - record channels 92
 - record handles 92
 - VTR, connecting to system 34
- W**
- workgroup
 - FeedClip 112
 - layout 24
 - NewsEdit 96
 - NewsQ 132

X

XenaSD

- installing control panel 39

- installing driver 39

XenaSD board, breakout box 38

XT components

- additional components 22

- Breakout Box 19

- computer 18

- keyboard 19

- monitor 19

- mouse 19

- software 20

- storage options 23



Index