

Windows Driver Installation Guide

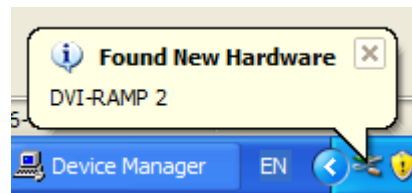
Files Required

[miranda_dviramp2_usb_XP_Vista.zip](#)

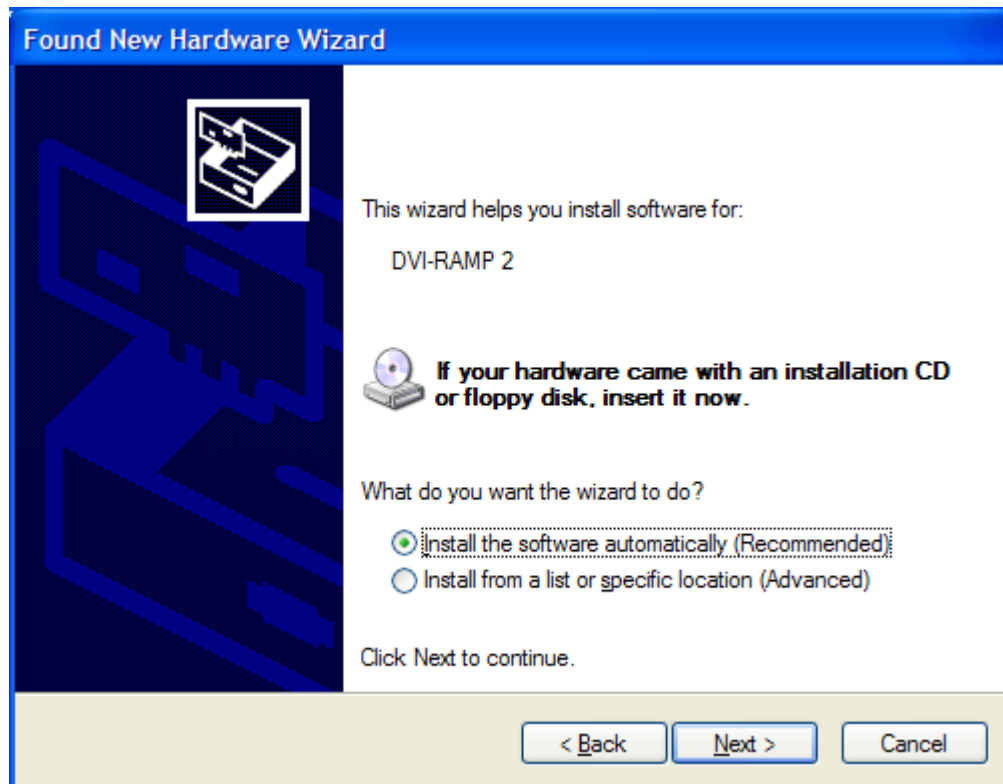
Windows Installation Guide

This is a step-by-step guide on how to install Dviramp2's USB driver on Windows platforms. **You must have Administrator privileges before you continue.**

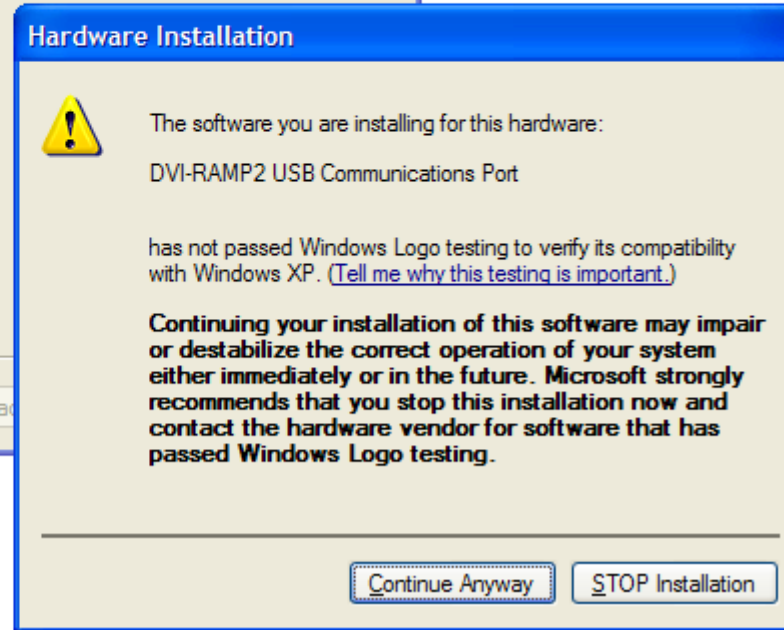
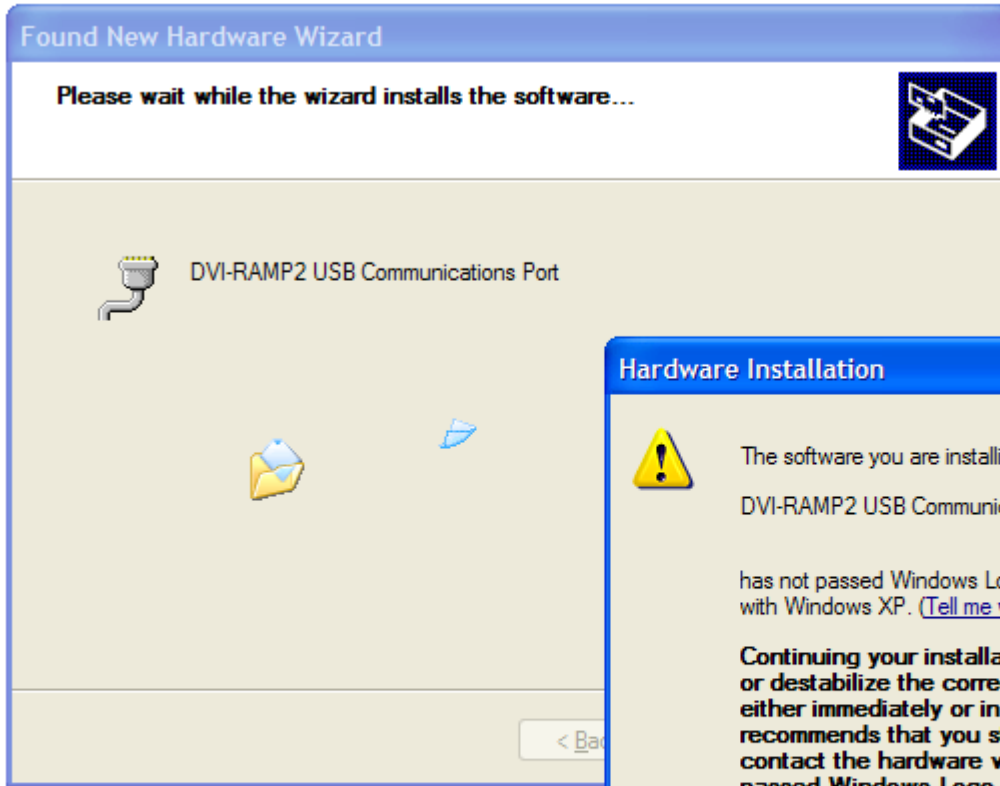
- Download the file **miranda_dviramp2_usb_XP_Vista.zip** from the previous section and unzip its contents to a temporary folder.
- From this temporary folder, double click on **installdriver.bat** to copy the necessary files.
- Connect the DVI-Ramp2 to the PC with a USB cable.
- Power up the DVI-Ramp2 and wait for the "Found New Hardware" wizard to come up.
- Follow the instructions below.



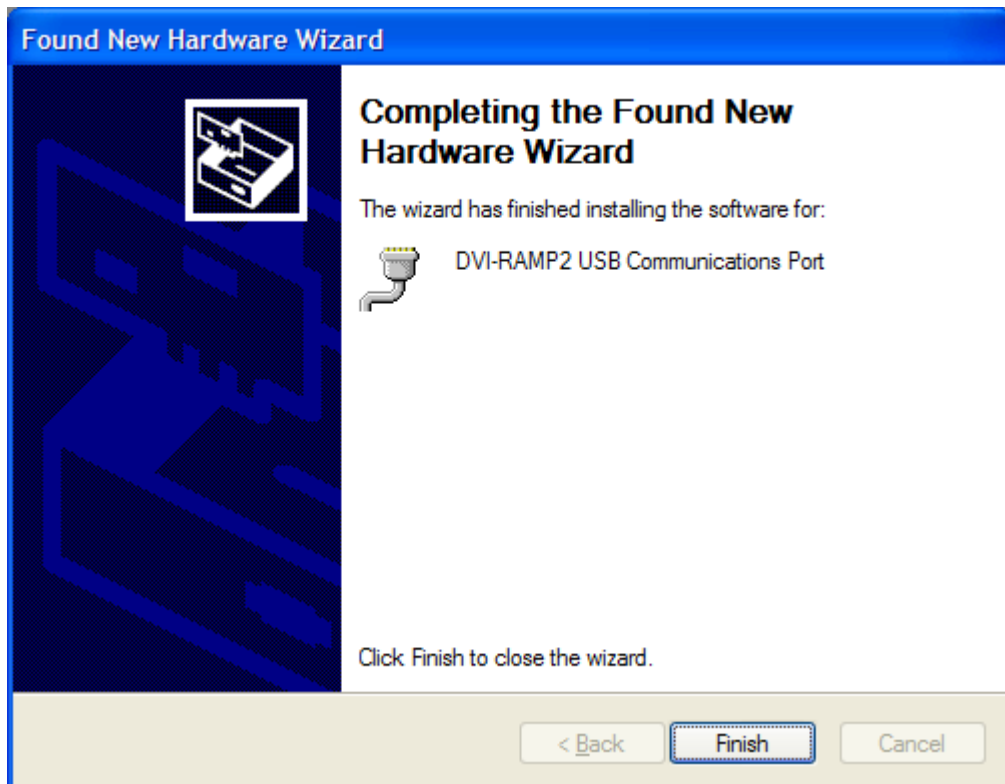
Select "No, not this time" then Click "Next". When asked about installation CD, Select "Install software automatically. (Recommended)" then Click "Next".



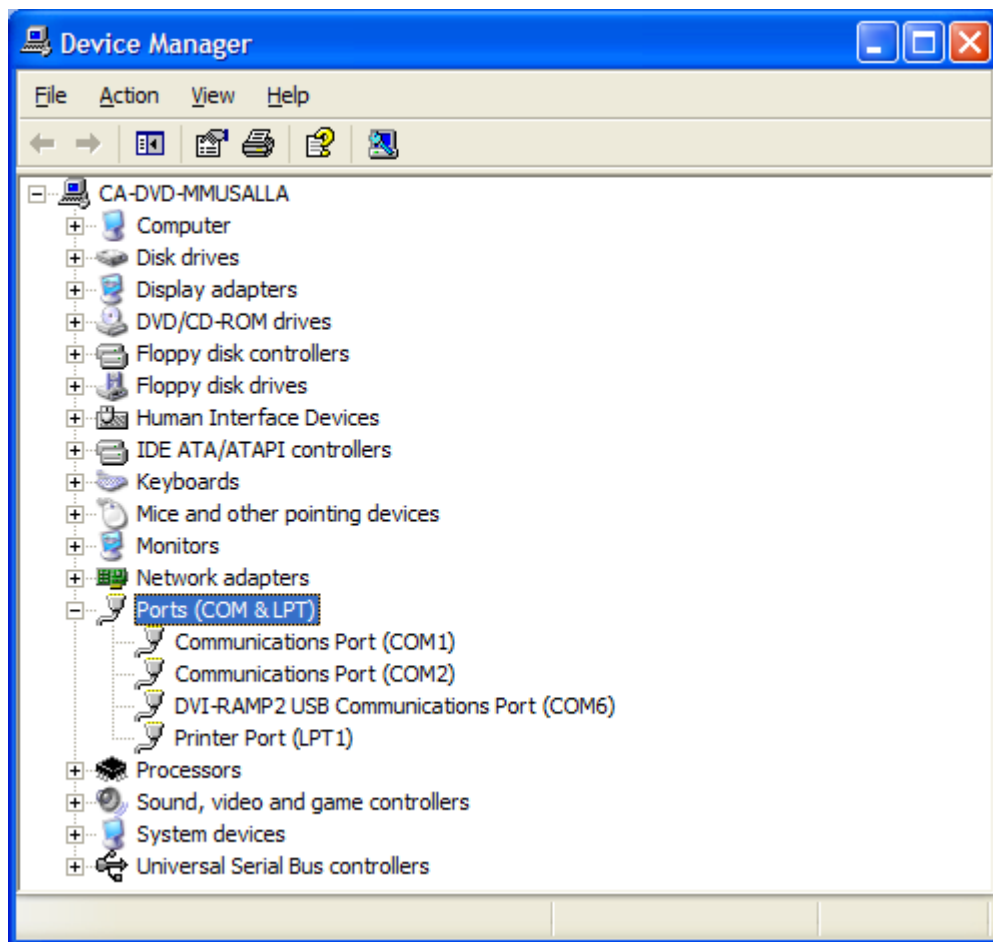
During installation, you might be prompted with a window like this:



Click "Continue Anyway". Once everything is completed you'll be presented with a window like this:



Click "Finish". **Driver installation is now complete.** To verify your installation, go to "Device Manager". Under "Ports" you'll find a device named "DVI-RAMP2 USB Communications Port(COMx)" which will specify the COM port on which Dviramp2 is loaded.



DVI-Ramp2 Firmware Update Guide

Files Required

[DVI-Ramp2 Control Software](#)

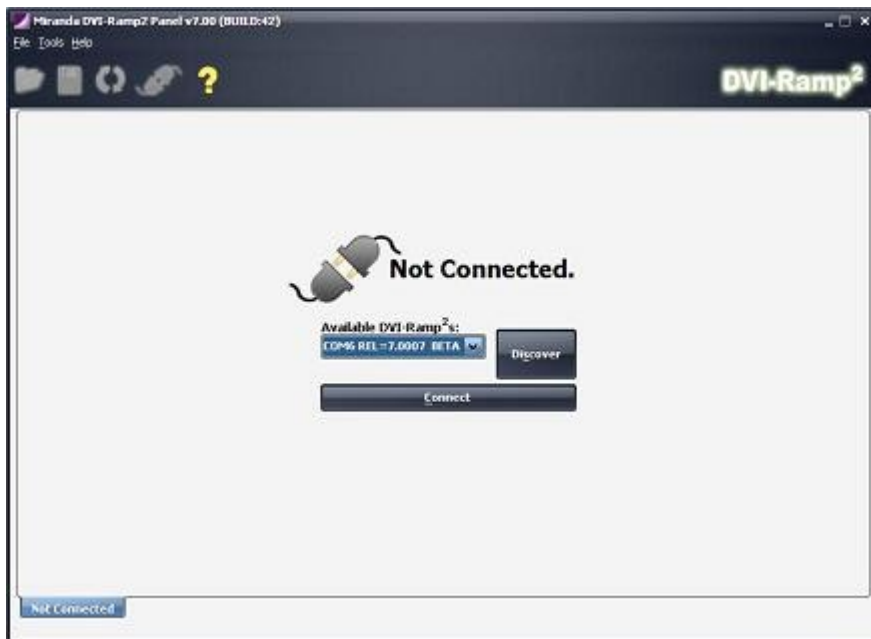
Notes

- You must use the latest Control Software (version 7.60 and later) to upgrade firmware
- If updating through USB, make sure DVI-Ramp2 unit is connected directly to the PC or to a USB Hub which is connected to the PC directly (not a PCI-USB card). There are reports of firmware update failure caused by PCI-USB cards.
- If updating through USB, make sure no RS232 dongle is connected to the unit. If RS232 dongle was connected during a firmware update, the update application will not be able to communicate through USB with unit.

If an RS232 dongle was present, simply unplug the RS232 dongle and reset unit before retrying Firmware Update through USB.

Instructions

1. Launch DVI-Ramp2 Control Software.



2. Go to menu **Tools->DVI-Ramp2 Updater** (Ctrl+U). You'll get the following screen.



3. Select COM (/dev/ttyS* or /dev/ttyUSB* under linux) port of unit to update.
4. Click on "Load..." to select update package (.zip file) Contact Technical Support for Firmware Updates
5. Click on "Update"
6. Wait for update process to complete - it's a multi-step process.

SafeBoot Mode

This mode is a fallback in case the unit can't power-up into normal operation mode (e.g. bad firmware was loaded or Firmware got corrupt). In that case, SafeBoot mode will put the unit in Firmware Update state for us to load a new firmware.

Getting into SafeBoot Mode:

- Turn off unit.
- Insert a paper clip through the hole above ETH & USB/RS232 LEDs
- Power on unit.

To get out of SafeBoot Mode, either load a new firmware or simply Power-Cycle the unit.

At this point, the unit will power-up in SafeBoot, USB communications is up, USB/RS232 LED is amber, ETH LED is off and all other LEDs are Red.

At this point, we follow the normal "DVI-Ramp2 Firmware Update" Guide

DVI-Ramp2 Control Software

Windows Installation

Requirements:

[DVI-Ramp2 Control Software](#)

[JRE1.5 Download](#)

Note:

Although this software works with JRE version 1.5, JRE1.6 is preferred for a better user experience.

[JRE1.6 Download](#)

Instructions:

- Install Java Runtime Environment (JRE) of your choice (1.5 or 1.6)
- Download DVI-Ramp2 Control Software and unzip the file to a known location.
- Double-Click on **.jar** file to launch application