



grass valley

A **BELDEN** BRAND

NV96XX

VIRTUAL PANELS

Windows Setup Guide

VERSION 1.3

UG0020-08

2015-07-20

www.grassvalley.com

Copyright and Trademark Notice

Copyright © 2015, Grass Valley USA, LLC. All rights reserved.

Belden, Belden Sending All The Right Signals, and the Belden logo are trademarks or registered trademarks of Belden Inc. or its affiliated companies in the United States and other jurisdictions. Grass Valley USA, LLC, Miranda, NV96xx, Kaleido, NVISION, iControl, and Densité are trademarks or registered trademarks of Grass Valley USA, LLC. Belden Inc., Grass Valley USA, LLC, and other parties may also have trademark rights in other terms used herein.

Terms and Conditions

Please read the following terms and conditions carefully. By using Virtual panel documentation, you agree to the following terms and conditions.

Grass Valley hereby grants permission and license to owners of Virtual panels to use their product manuals for their own internal business use. Manuals for Miranda products may not be reproduced or transmitted in any form or by any means, electronic or mechanical, including photocopying and recording, for any purpose unless specifically authorized in writing by Miranda.

A Miranda manual may have been revised to reflect changes made to the product during its manufacturing life. Thus, different versions of a manual may exist for any given product. Care should be taken to ensure that one obtains the proper manual version for a specific product serial number.

Information in this document is subject to change without notice and does not represent a commitment on the part of Miranda.

Warranty information is available in the Support section of the Miranda Web site (www.grassvalley.com).

Title NV96xx Setup Guide

Part Number UG0020-08

Revision April 7, 2015 3:31 pm

Electrostatic Discharge (ESD) Protection



Electrostatic discharge occurs when electronic components are improperly handled and can result in intermittent failure or complete damage adversely affecting an electrical circuit. When you remove and replace any card from a frame always follow ESD-prevention procedures:

- Ensure that the frame is electrically connected to earth ground through the power cord or any other means if available.
- Wear an ESD wrist strap ensuring that it makes good skin contact. Connect the grounding clip to an *unpainted surface* of the chassis frame to safely ground unwanted ESD voltages. If no wrist strap is available, ground yourself by touching the *unpainted* metal part of the chassis.
- For safety, periodically check the resistance value of the antistatic strap, which should be between 1 and 10 megohms.
- When temporarily storing a card make sure it is placed in an ESD bag.
- Cards in an earth grounded metal frame or casing do not require any special ESD protection.

Protection contre les décharges électrostatiques (DES)



Une décharge électrostatique peut se produire lorsque des composants électroniques ne sont pas manipulés de manière adéquate, ce qui peut entraîner des défaillances intermittentes ou endommager irrémédiablement un circuit électrique. Au moment de remplacer une carte dans un châssis, prenez toujours les mesures de protection antistatique appropriées :

- Assurez-vous que le châssis est relié électriquement à la terre par le cordon d'alimentation ou tout autre moyen disponible.
- Portez un bracelet antistatique et assurez-vous qu'il est bien en contact avec la peau. Connectez la pince de masse à une *surface non peinte* du châssis pour détourner à la terre toute tension électrostatique indésirable. En l'absence de bracelet antistatique, déchargez l'électricité statique de votre corps en touchant une surface métallique *non peinte* du châssis.
- Pour plus de sécurité, vérifiez périodiquement la valeur de résistance du bracelet antistatique. Elle doit se situer entre 1 et 10 mégohms.
- Si vous devez mettre une carte de côté, assurez-vous de la ranger dans un sac protecteur antistatique.
- Les cartes qui sont reliées à un châssis ou boîtier métallique mis à la terre ne nécessitent pas de protection antistatique spéciale.

Précautions pour les écrans LCD et TFT



Regarder l'écran pendant une trop longue période de temps peut nuire à votre vision. Prenez une pause de 10 minutes, après 30 minutes d'utilisation.

Si l'écran LCD ou TFT est brisé, manipulez les fragments de verre avec précaution au moment de vous en débarrasser. veillez à ce que le cristal liquide n'entre pas en contact avec la peau ou la bouche. En cas de contact avec la peau ou les vêtements, laver

immédiatement à l'eau savonneuse. Ne jamais ingérer le liquide. La toxicité est extrêmement faible, mais la prudence demeure de mise en tout temps.

Recycling

Visit www.grassvalley.com for recycling information.

Certification and Compliance

Safety Compliance



c

This equipment complies with the requirements of CSA/UL/IEC/EN 60950-1, 2nd Ed. + AM1, Safety of information technology equipment.

The power cords supplied with this equipment meet the appropriate national standards for the country of destination.

Electromagnetic Compatibility



This equipment has been tested for verification of compliance with FCC Part 15, Subpart B requirements for class A digital devices.

Note: This equipment has been tested and found to comply with the limits for a Class A digital device, pursuant to Part 15 of the FCC rules. These limits are designed to provide reasonable protection against harmful interference when the equipment is operated in a commercial environment. This equipment generates, uses, and can radiate radio frequency energy, and, if not installed and used in accordance with the instruction manual, may cause harmful interference to radio communications. Operation of this equipment in a residential area is likely to cause harmful interference in which case the user will be required to correct the interference at his own expense.



This equipment has been tested and found to comply with the requirements of the EMC directive 2004/108/EC:

- EN 55022 Class A Radiated and conducted emissions
- EN 61000-3-2 Limits for harmonic current emissions
- EN 61000-3-3 Limitation of voltage fluctuations and flicker
- EN 61000-4-2 Electrostatic discharge immunity
- EN 61000-4-3 Radiated, radio-frequency, electromagnetic field immunity
- EN 61000-4-4 Electrical fast transient immunity
- EN 61000-4-5 Surge transient immunity
- EN 61000-4-6 Conducted disturbances immunity
- EN 61000-4-8 Power frequency magnetic field immunity
- EN 61000-4-11 Voltage dips, short interruptions and voltage variations immunity






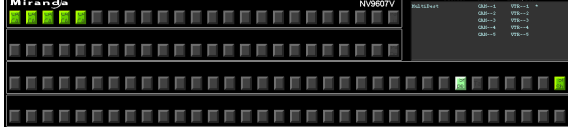


Virtual Control Panels

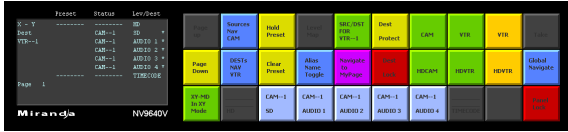
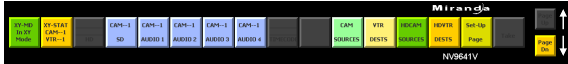

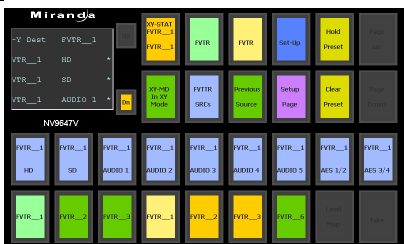

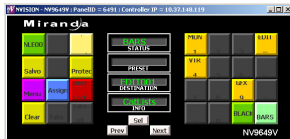

This document tells you how to install and set up virtual control panels on computers running Windows.

Introduction

Miranda's virtual panels are software control panels (a.k.a. GUIs) for NV9000 router control systems. A virtual panel runs on a computer connected to your NV9000's house network or to your NV9000 router/panel network.

The virtual panels correspond closely to physical control panels of similar names:

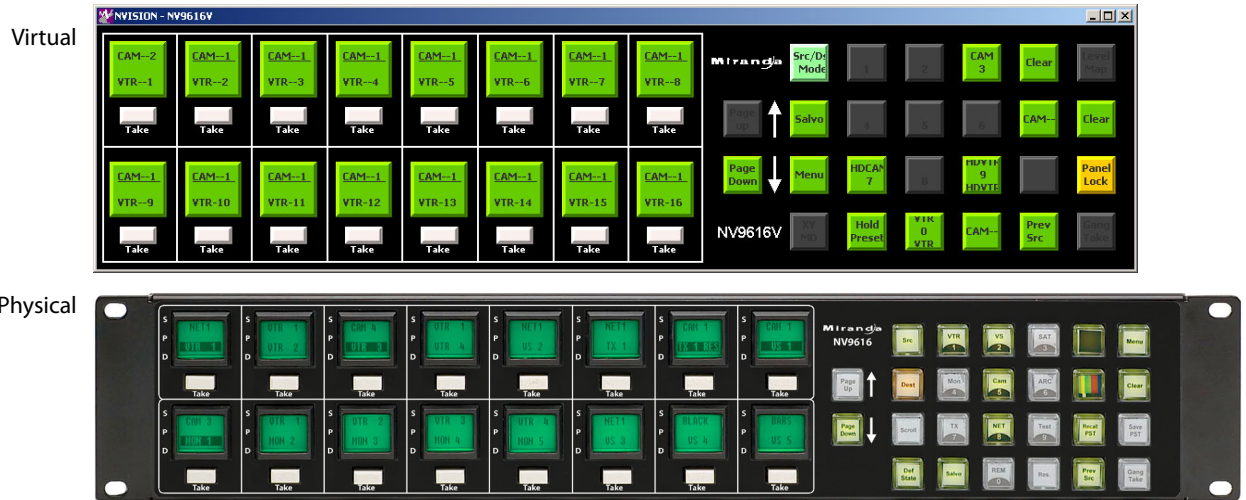
Virtual Panel	Physical Panel	Thumbnail
NV9601V	NV9601	
NV9602V	NV9602	
NV9603AV	NV9603A	
NV9605V	NV9605	
NV9606V	NV9606	
NV9607V	NV9607	
NV9609V	NV9609	
NV9616V	NV9616	

Virtual Panel	Physical Panel	Thumbnail
NV9640V	NV9640	
NV9641V	NV9641	
NV9642V	NV9642	
NV9647V	—	
NV9648V	NV9648	
NV9649V	NV9649	
NV9654V	NV9654	

Virtual panels use the same configurations as the corresponding physical panels. Using a virtual control is the same as using the matching physical control panel except for a few minor points.

Physical panels have tactile pushbuttons. Some physical panels have displays; others have GPIO buttons at the rear of the panel. The virtual panels emulate the buttons and displays

of the physical panels, but of course, have no GPIO connections. Compare, for example, the NV916V with the NV9616:



(The configurations shown here are samples only; your configurations will differ.)

This document discusses a few configuration issues. If you want to understand panel configuration refer to the NV9000-SE Utilities User's Guide or its help files, or to the NV9000 User's Guide and its associated control panel user's guides.

Requirements

Virtual panels run under Macintosh and Windows, subject to the following constraints:

- Windows 2000, XP, Vista, or Windows 7.
- Mac OS X, version 10.4.x or newer, with JRE (Java runtime environment) 1.6.0 or newer.

To use a virtual panel, your computer must be connected to an NV9000 router control system.

Requirements:

NV9000-SE Utilities: revision 6.4.0 or newer	NV9601V: SV0696-04 or newer
NV9000: revision 6.4.0 or newer	NV9602V: SV0949-02 or newer
Monitor: 1152 horizontal pixels or more	NV9603AV: SV0698-04 or newer
	NV9605V: SV0700-05 or newer
	NV9606V: SV0952-02 or newer
	NV9607V: SV0953-02 or newer
	NV9609V: SV0806-03 or newer
	NV9616V: SV0702-04 or newer
	NV9640V: SV0704-05 or newer
	NV9641V: SV0706-04 or newer
	NV9642V: SV0743-02 or newer
	NV9647V: SV1140-00 or newer

NV9648V: SV1210-00 or newer

NV9649V: SV1208-00 or newer

NV9654V: SV1166-00 or newer

Installation

You will find the virtual panel installation programs on the NV9000 Virtual Panels Installation disk (SB0217-08) you received from Miranda. Load the CD in your CD drive and navigate to the installation program for the virtual panel of your choice. You can install any or all virtual panels. Choose the Windows folder (for Windows installation). The Windows installation program has a .exe extension. Each installation program installs one virtual panel. All 12 installation programs are the same except for the name of the control panel.

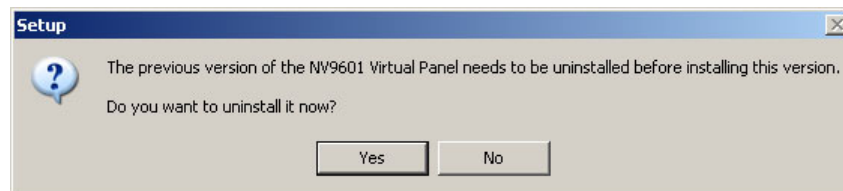
- ▲ Your computer need **not** be connected to a router control system when you run the installation program(s).

Double-click the installation program and wait a few seconds while it loads. Then you will see its initial screen:



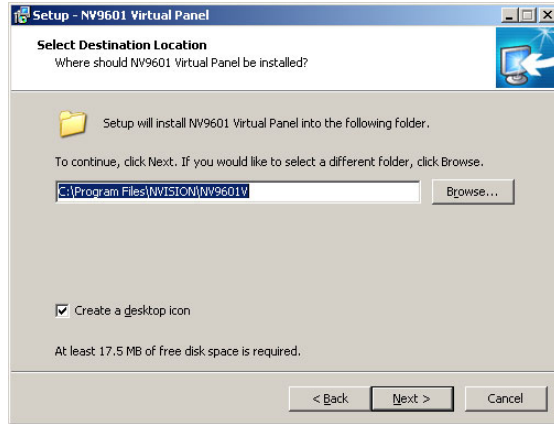
Click 'Cancel' if you wish to quit; click 'Next' to proceed.

If you have a previous version of the virtual panel, you will be asked for permission to uninstall it:



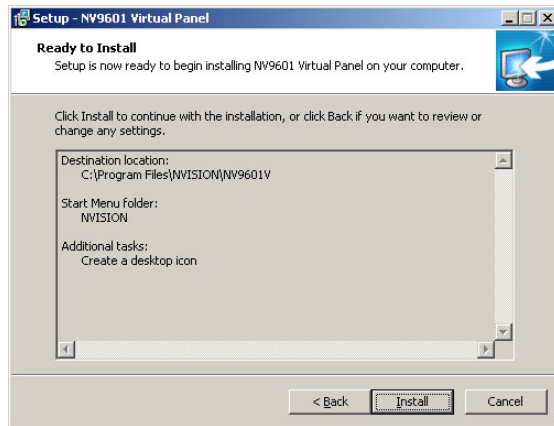
Respond 'Yes' if you want to proceed with your installation.

The next screen allows you to specify where to install the software:



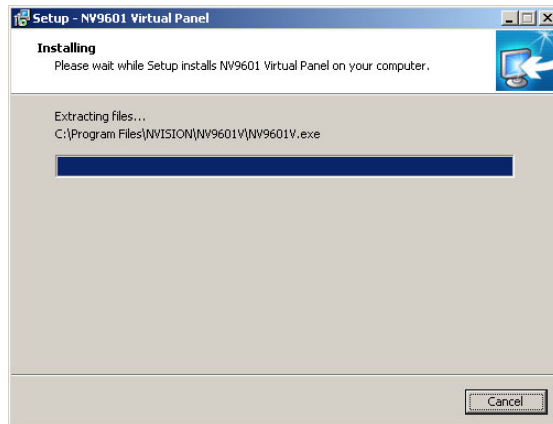
We recommend that you use the default installation folder. However, you can click 'Browse...' to navigate to the folder in which to install the panel software. Click 'Cancel' if you wish to quit; click 'Next' to proceed. Click 'Back' if you want to go back to the previous screen.

The next screen summarizes your choices so that you can make changes if necessary:

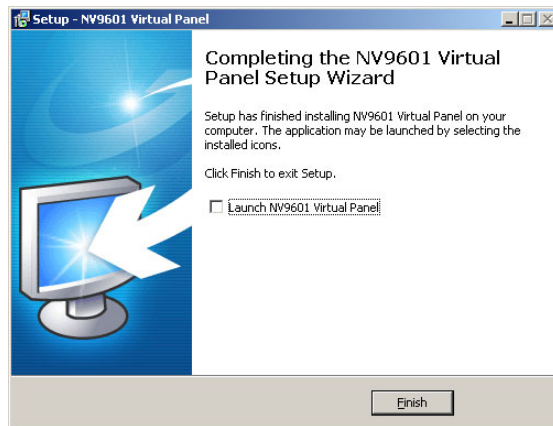


Click 'Cancel' if you wish to quit; click 'Back' if you want to go back to the previous screen. Click 'Install' to start the actual installation.

The next screen is a progress indicator:



The installation does not take long. The final screen appears indicating that installation is complete:



If the installation fails, call Tech Support.

The default installed pathname for any of the virtual panels is

C:\Program Files\NVISION*<panelname>**<panelname>*.exe

The default path in the start menu

Start > Programs > NVision > *<panelname>*

The installer places a shortcut to your virtual panel on your desktop.

Initial Setup

At some time after you install the virtual panel, and before it becomes operational, you must perform a brief setup. The setup (1) identifies the router control system's primary controller (or a redundant system's virtual IP address) and (2) selects a configuration for the virtual panel.

- ▲ Your computer must be connected to your router control system.
- ▲ You can use NV9000-SE Utilities to review existing panel configurations. (These are labelled HW Panels.) If you have no configuration of the type required for a virtual panel, you will have to create one.

Follow these steps to perform the setup:

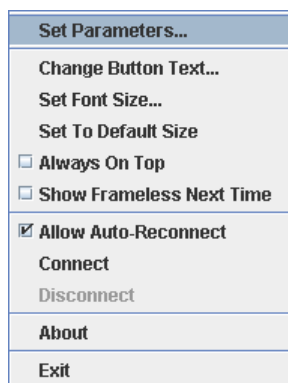
1 Launch the virtual panel.

Either double-click the application directly, double-click its desktop shortcut, or choose the program from the Windows start menu. The panel will appear after several seconds and it will appear black with dark gray buttons.

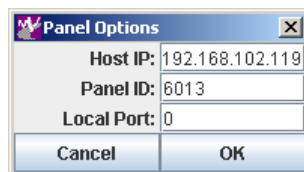
- ▲ If a panel does not appear, or the panel is minimized, take the corrective steps outlined under [Upgrading Old Virtual Panels](#) on [page 15](#).

Every virtual panel has a context menu in which to select options. (There is no other menu.) Right-click anywhere in the virtual panel (except over a “display” region) to get the context menu.

This is the context menu:



2 Choose ‘Set Parameters’ from the context menu. The ‘Panel Options’ dialog appears:



Enter the IP address of the primary system controller (or the virtual IP address of a redundant system). Enter the panel ID of the panel configuration you want to use. Click ‘OK’.

In general, a “local port” value of 0 will be suitable. If, after setting up your virtual panel, it fails to function (because of firewall or security protection), set the local port to a non-zero value, corresponding to an enabled port on your firewall.

Multiple panels need distinct local port numbers. (A zero value tells the operating system to use the next available port.)

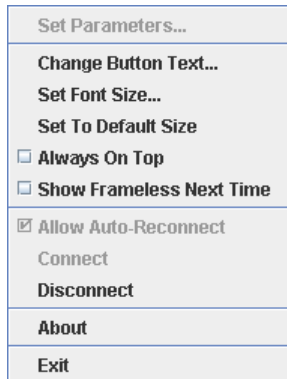
- ▲ The term “host” refers to the active system controller.

3 Open the context menu again and Click ‘Connect’.

If the IP address and panel ID were valid entries, the panel buttons and display (if present) will illuminate in appropriate colors and with appropriate text, defined by the panel configuration, and the panel will be connected to the router control system.

(You define panel configurations and panel IDs in NV9000-SE Utilities.)

When a panel is connected, the context menu changes slightly:



The 'Set Parameter', 'Connect', and 'Allow Auto-Reconnect' commands become disabled and the 'Disconnect' command becomes enabled. You cannot change the IP address or panel ID when the virtual panel is connected.

Other commands remain enabled.

- 4 Open the context menu once again and Click 'Exit'.

The 'Exit' command closes the virtual panel. After a few seconds, the router control system will detect that the panel is off-line.

When panel operators start a virtual panel that has been set up this way, it will automatically reconnect (if so enabled) to the router control system. If automatic reconnect is not enabled, the operator must reconnect manually.

- ▲ There is no real difference between choosing 'Exit' and clicking the close button (X) at the top right of the panel window.

For a review of the context menu options, see [Context Menu Commands](#) on page 10.

Configuration

It is in NV9000-SE Utilities that you create and manage configurations for the virtual panels (and other control panels).

NV9000-SE Utilities supports what are called hardware panels and software panels. Software panels are the EC9700 (for router control) and EC9710 (for router status).

NV9000-SE Utilities knows nothing about "virtual panels." Virtual panels can be considered "virtual *hardware* panels" and to create a configuration for a virtual panel in NV9000-SE Utilities, you create a hardware panel configuration of matching type. For example, go to "HW panels" and create an NV9616 panel configuration to use with an NV9616V virtual panel.

A panel configuration consists of a configuration file (with a suffix such as .601, .640, etc.) and a .legends file. The configuration file provides initial *states* for the panel. The .legends file provides *fixed button text* for the virtual panel. The configuration files are generated by NV9000-SE Utilities every time you save a panel configuration. The panel configurations do not become active until you issue either an "Update Panel Configuration" or "Write Configuration to Local System" command in NV9000-SE Utilities.

Every virtual panel requires a unique panel ID. (In fact, *all* control panels must have a unique panel ID.) You can run multiple instances of any virtual panel on your computer. Each instance requires a distinct panel ID, even if the multiple instances are to have identical configurations. Configuration files are, however, identified by panel ID. Consequently, you must have a unique configuration file for every instance of every panel. If your system has 12 panels all using the same configuration, you must have 12 copies of that configuration file (and 12 copies of the matching .legends file).

- ▲ Physical hardware panels ignore the .legends file. Button legends for some of the physical panels are placed on the button using clear plastic overlays.

Minor Configurations

In addition to the panel configuration, the virtual panels also allow minor display configurations. Virtual panel operators may change display parameters during operation. The display configurations include:

- Resizing the panel on the screen.
- Changing the font size.
- Setting the 'Always On Top' flag. When this option is enabled, the panel is always displayed in front of every other window on your Windows "desktop."
- Displaying the panel with, or without, its Windows frame.
- Whether to reconnect to the router control system automatically (on startup or restart of the control system).

The options are available in the context menu. See [Context Menu Commands](#) on [page 10](#).

- ▲ Each instance of any panel starts with settings contained in the last saved .INI file for that panel.

Usage

Functionally, the virtual panels are exactly identical to their matching hardware panels. However, there are a few slight operational differences. The most obvious is that with a physical panel, you press a physical button and with a virtual panel, you click on a colored rectangle (a virtual "button") that might change color or text, depending on context.

Differences between virtual panels and hardware panels

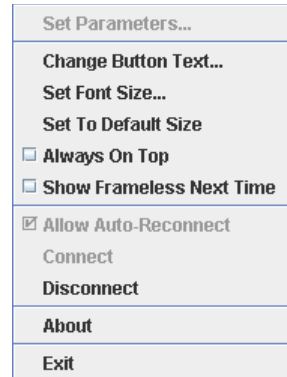
- 1 Virtual panels have no GPIOs. GPIO configurations apply to the NV9605, NV9640, and NV9641 hardware panels and are ignored by the virtual panels.
- 2 Virtual panel buttons are relegendable. Buttons on some physical panels have fixed legends (plastic button inserts). (The NV9616, NV9640, NV9641, and NV9642 physical panels do have relegendable buttons.)
- 3 The virtual panels have a context menu with which to connect or disconnect the panel and to select certain display options. (See [Minor Configurations](#) previous.)
- 4 The virtual panels can be resized and repositioned on your screen.
- 5 Dark (i.e. disabled) buttons illuminate if you click on them and hold the mouse down.

Context Menu Commands

The context menu presents 3 dialogs, 3 checkbox options, and 5 commands:



Before Connection



After Connection

When a virtual panel is not connected to a router control system, the 'Disconnect' command is disabled.

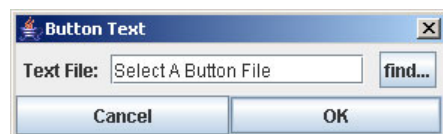
When a virtual panel is connected to a router control system, the 'Set Parameters', 'Connect', and 'Allow Auto Reconnect' options are disabled.

Set Parameters . . .

Use this command to set the IP address of the primary system controller and the panel ID. See [Initial Setup](#) on [page 6](#) for a discussion.

Change Button Text . . .

Normally you would never use this command. You might occasionally use this command to update the button text for your virtual panel. It displays a dialog in which you can browse to select the appropriate .legends file:



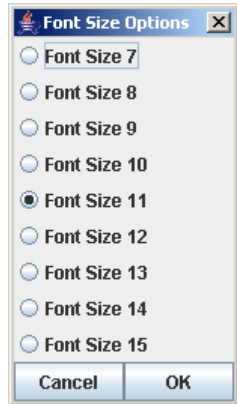
In most cases, you will find .legends files in the following folder in the NV9000 system controller (and not on your PC):

```
C:\NVision\envy\usersys\live\
```

(A .legends file provides the fixed button text for the panel configuration.)

Set Font Size . . .

Use this command to select the text size for your virtual panel. The command presents a dialog having these choices:



The panel retains its selected font size from session to session.

Set to Default Size

Use this command to restore the virtual panel to its default size.

The panel retains its screen position and its size (whether default or not) from session to session.

Always On Top

If you mark the 'Always On Top' checkbox, the virtual panel is always displayed in front of every other window on your Windows "desktop."

If you have more than one designated "always on top," the panel you are actively using is in front of the others.

The panel retains its "always on top" setting from session to session.

Show Frameless Next Time

If you mark the 'Show Frameless Next Time' checkbox, the virtual panel is displayed without its Windows frame, and slightly smaller, the next time you start the panel. The option remains set until you change it.

When the checkbox is unmarked, the virtual panel has a Windows frame with Windows controls.

Allow Auto Reconnect

If you mark the 'Allow Auto Reconnect' checkbox, the virtual panel reconnects to the router control system automatically (on startup). You will have to assign new and unique panel IDs to every instance before you connect it.

▲ The panel ID of any control panel anywhere in a router control system must be unique.

Connect

Use this command to connect a virtual panel to the router control system.

Disconnect

Use this command to disconnect a virtual panel from the router control system.

About

Use this command to obtain the current software revision data:



It is especially important to know this information when you are placing calls to technical support.

Exit

Use this command to close the virtual panel application. It is automatically disconnected. The router control system requires a few seconds to detect that the panel was disconnected.

Notes

Diagnostic Launch

(Diagnostic launch is available only under Windows.)

By holding the CTRL key down when you launch a virtual panel, you can place the panel in a diagnostic mode. This mode displays a "DOS box" (in addition to the virtual panel) that you can use to monitor the exchange between the virtual panel software and the system controller.

This is an example of such an exchange:

```

NV9601V.exe
cwd: C:\Program Files\NUVISION\NU9601Um
cmd: "C:\Program Files\NUVISION\NU9601Um\jre\bin\java.exe" -classpath "C:\Program
Files\NUVISION\NU9601Um\msutil.jar;C:\Program Files\NUVISION\NU9601Um\msbase.jar;
C:\Program Files\NUVISION\NU9601Um\bin;C:\Program Files\NUVISION\NU9601Um\forms-1.
0.6.jar;C:\Program Files\NUVISION\NU9601Um\mssqlserver.jar;C:\Program Files\NUISI
ON\NU9601Um\lax.jar;" com.zerog.lax.LAX "C:/Program Files/NUVISION/NU9601Um/NU960
1U.lax" "C:/Documents and Settings/EnvyAdmin/Local Settings/Temp/lax29.tmp"
LAX Version = 7.0
Creating Remote Address using: /172.16.1.1
Creating Local Address using: /172.16.1.1:0
Sent Read File Command for: \nvision\envy\usersys\live\QC2.601.legends
Received response for: \nvision\envy\usersys\live\QC2.601.legends
Just sent SW version
Just sent SW version
Just sent SW version
Just sent SW version
-
  
```

Hints

Multiple Instances of the Same Virtual Panel

Every instance starts with the last saved .INI file for that virtual panel type. (There is one and only one .INI file for any application program.)

Resizing the Panel that is Displayed with No Frame

When the panel has no frame, dragging the lower right corner works, but does not provide any feedback until you release the cursor. Then the frame displays at its new size.

Reducing the panel size will generally crop off many of the panel's buttons and features.

Resizing non-uniformly might distort panel buttons and features considerably.

The frame can be restored to its default size with the context menu's 'Set Default Size' command.

Restarting a Panel

Wait at least 10 seconds between stopping a panel and restarting the panel. The router control system needs a few seconds to register the fact that the panel went off-line. No harm will come if you do not wait, but it might take longer (up to 30 seconds) for the panel to reconnect.

Dark Buttons

Some panel buttons can be disabled dynamically when you perform certain operations. Disabled buttons are dark gray and you probably will not be able to read the button text. If you need to read the text of a disabled button, click-and-hold the cursor on the button. It will illuminate and you can read the text.

In cases where buttons do go dark (become disabled), it is advisable to know what buttons you can or should click. Read the NV9000-SE Utilities User's Guide or help files, or the

NV9000 User's Guide and its associated control panel user's guides, for information on panel functions.

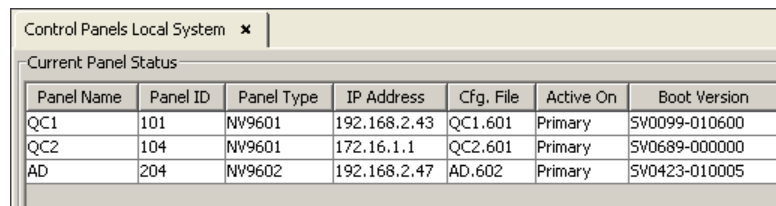
Caveat about Reconfiguration

If you reconfigure a virtual panel while it is on-line, you might see button text that does not conform to the new configuration.

Therefore, after you reconfigure a virtual panel, open its context menu, choose 'Set Parameters' and click 'OK'. Doing this forces an update of the button text.

IP Addresses

When you are viewing control panels in your system (using NV9000-SE Utilities), active virtual panels appear in the list. In this illustration, the panel named "QC2" with the panel ID 104 is a virtual panel:



Panel Name	Panel ID	Panel Type	IP Address	Cfg. File	Active On	Boot Version
QC1	101	NV9601	192.168.2.43	QC1.601	Primary	SV0099-010600
QC2	104	NV9601	172.16.1.1	QC2.601	Primary	SV0689-000000
AD	204	NV9602	192.168.2.47	AD.602	Primary	SV0423-010005

Note, however, that IP addresses for the *physical* panels are those assigned to the panel and vary. The IP addresses for *virtual* panels are, in most cases, those for your computers and vary if you have more than one computer on your router control network.

Virtual panels running directly on a primary system controller take the IP address of the primary system controller and that IP address does not vary.

Pathnames

The pathname of the configuration file folder (which is in the NV9000 system controller, not on your PC) is

```
C:\NVision\envy\usersys\live\
```

in case you need to browse the configuration files.

Legacy Configurations

A very old panel configuration might have no .legend file and will not work with a virtual panel. The remedy is to open the old configuration in NV9000-SE Utilities (version 4.2.0 or later) and re-save the configuration. After creating the new configuration and associated .legends file, the virtual panel should run properly with the new configuration.

- ▲ NV9000-SE Utilities requires that you must make at least some slight change to a configuration before you save it. (For example, uncheck an option and then re-check it. The 'Save' button will become enabled.)

Copies of Configurations

NV9000-SE Utilities has a mechanism by which you can make copies of configurations, but neglects to copy the configuration's associated .legends file. If you intend to make copies of a configuration, open every copy and save it. Here again, NV9000-SE Utilities requires that

you must make at least some slight change to a configuration before you save it. (For example, uncheck an option and then re-check it. The 'Save' button will become enabled.)

Upgrading Old Virtual Panels

If you install a new virtual panel, it will not work properly with the .INI file of an old virtual panel. There are 3 ways to solve this problem.

- Use the Windows 'Add or Remove Programs' command to remove the old virtual panel software entirely before installing the new software.
- Delete the .INI file from the old virtual software folder. The new virtual panel will initialize properly if there is no old .INI file.
- The default location of the .INI file is

`C:\Program Files\NVISION\<panel>\<panel>.ini`

where *<panel>* is NV9601V, NV9602V, as appropriate.

- If the new virtual panel appears minimized at first launch, drag a corner to resize its window. Then click anywhere in the black region to get the context menu. There, click 'Set Default Size'. Then click 'Set Font Size' in the context window and choose one of the font sizes listed.
- That will be sufficient to make the panel usable. You can either close the panel or continue with its setup at this point.



Miranda Technical Support

For technical assistance, contact our international support center, at 1-800-547-8949 (US and Canada) or +1 530 478 4148.

To obtain a local phone number for the support center nearest you, please consult the Contact Us section of Miranda's website (www.grassvalley.com).

An online form for e-mail contact is also available from the website.

Corporate Head Office

Miranda
3499 Douglas-B.-Floreani
St-Laurent, Quebec H4S 2C6
Canada
Telephone: +1 514 333 1772
Fax: +1 514 333 9828
www.grassvalley.com