

# GV CONVERGENT

IP/SDI ROUTER CONTROL



## Quick Start Guide

13-00952-020\_AB

1/16/18

#### Copyright and Trademark Notice

Copyright © 2018, Grass Valley USA, LLC. All rights reserved.

Belden, Belden Sending All The Right Signals, and the Belden logo are trademarks or registered trademarks of Belden Inc. or its affiliated companies in the United States and other jurisdictions. Grass Valley, K-Frame, Kayenne, Karrera, and GV Korona are trademarks or registered trademarks of Grass Valley USA, LLC. Belden Inc., Grass Valley USA, LLC, and other parties may also have trademark rights in other terms used herein.

## Terms and Conditions

Please read the following terms and conditions carefully. By using Video Production Center documentation, you agree to the following terms and conditions.

Grass Valley hereby grants permission and license to owners of Video Production Centers to use their product manuals for their own internal business use. Manuals for Grass Valley products may not be reproduced or transmitted in any form or by any means, electronic or mechanical, including photocopying and recording, for any purpose unless specifically authorized in writing by Grass Valley.

A Grass Valley manual may have been revised to reflect changes made to the product during its manufacturing life. Thus, different versions of a manual may exist for any given product. Care should be taken to ensure that one obtains the proper manual version for a specific product serial number.

Information in this document is subject to change without notice and does not represent a commitment on the part of Grass Valley.

Warranty information is available from the Legal Terms and Conditions section of Grass Valley's website ([www.grassvalley.com](http://www.grassvalley.com)).

Title GV Convergent Quick Start Guide  
 Part Number 13-00952-020\_AB  
 Revision 16 January 2018, 10:41 am

## Important Safeguards and Notices

This section provides important safety guidelines for operators and service personnel. Specific warnings and cautions appear throughout the manual where they apply. Please read and follow this important information, especially those instructions related to the risk of electric shock or injury to persons.

### Symbols and Their Meanings



Indicates that dangerous high voltage is present within the equipment enclosure that may be of sufficient magnitude to constitute a risk of electric shock.



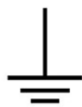
Indicates that the user, operator or service technician should refer to the product manuals for important operating, maintenance, or service instructions.



This is a prompt to note the fuse rating when replacing fuses. The fuse referenced in the text must be replaced with one having the ratings indicated.



Identifies a protective grounding terminal which must be connected to earth ground prior to making any other equipment connections.



Identifies an external protective grounding terminal which may be connected to earth ground as a supplement to an internal grounding terminal.



Indicates that static sensitive components are present, which may be damaged by electrostatic discharge. Use anti-static procedures, equipment and surfaces during servicing.



Indicates that the equipment has more than one power supply cord, and that all power supply cords must be disconnected before servicing to avoid electric shock.



The presence of this symbol in or on equipment means that it has been tested and certified as complying with applicable Canadian Standard Association (CSA) regulations and recommendations for USA/Canada.



The presence of this symbol in or on equipment means that it has been tested and certified as complying with applicable Underwriters Laboratory (UL) regulations and recommendations for USA/Canada.



The presence of this symbol in or on equipment means that it has been tested and certified as complying with applicable Intertek Testing Services regulations and recommendations for USA/Canada.



The presence of this symbol in or on product means that it complies with all applicable European Union (CE) directives.



The presence of this symbol in or on product means that it complies with safety of laser product applicable standards.

## Warnings



A warning indicates a possible hazard to personnel, which may cause injury or death. Observe the following general warnings when using or working on this equipment:

- Appropriately listed/certified mains supply power cords must be used for the connection of the equipment to the mains voltage at either 120 V AC or 240 V AC.
- This product relies on the building's installation for short-circuit (over-current) protection. Ensure that a fuse or circuit breaker for 120 V AC or 240 V AC is used on the phase conductors.
- Any instructions in this manual that require opening the equipment cover or enclosure are for use by qualified service personnel only.
- Do not operate the equipment in wet or damp conditions.
- This equipment is grounded through the grounding conductor of the power cords. To avoid electrical shock, plug the power cords into a properly wired receptacle before connecting the equipment inputs or outputs.
- Route power cords and other cables so they are not likely to be damaged. Properly support heavy cable bundles to avoid connector damage.
- Disconnect power before cleaning the equipment. Do not use liquid or aerosol cleaners; use only a damp cloth.
- Dangerous voltages may exist at several points in this equipment. To avoid injury, do not touch exposed connections and components while power is on.
- High leakage current may be present. Earth connection of product is essential before connecting power.
- Prior to servicing, remove jewelry such as rings, watches, and other metallic objects.
- To avoid fire hazard, use only the fuse type and rating specified in the service instructions for this product, or on the equipment.
- To avoid explosion, do not operate this equipment in an explosive atmosphere.
- Use proper lift points. Do not use door latches to lift or move equipment.
- Avoid mechanical hazards. Allow all rotating devices to come to a stop before servicing.

- Have qualified service personnel perform safety checks after any service.

## Cautions



A caution indicates a possible hazard to equipment that could result in equipment damage. Observe the following cautions when operating or working on this equipment:

- This equipment is meant to be installed in a restricted access location.

---

Note: Limited access restrictions apply to Video Processor Frames and Servers, not to operator controlled equipment such as Control Panels, Menus, Aux Panels, etc.

---

- When installing this equipment, do not attach the power cord to building surfaces.
- Products that have no on/off switch, and use an external power supply must be installed in proximity to a main power outlet that is easily accessible.
- Use the correct voltage setting. If this product lacks auto-ranging power supplies, before applying power ensure that each power supply is set to match the power source.
- Provide proper ventilation. To prevent product overheating, provide equipment ventilation in accordance with the installation instructions.
- Do not operate with suspected equipment failure. If you suspect product damage or equipment failure, have the equipment inspected by qualified service personnel.
- To reduce the risk of electric shock, do not perform any servicing other than that contained in the operating instructions unless you are qualified to do so. Refer all servicing to qualified service personnel. Servicing should be done in a static-free environment.
- This unit may have more than one power supply cord. Disconnect all power supply cords before servicing to avoid electric shock.
- Follow static precautions at all times when handling this equipment.

## Electrostatic Discharge (ESD) Protection



Electrostatic discharge occurs when electronic components are improperly handled and can result in intermittent failure or complete damage adversely affecting an electrical circuit. When you remove and replace any card from a frame always follow ESD-prevention procedures:

- Ensure that the frame is electrically connected to earth ground through the power cord or any other means if available.
- Wear an ESD wrist strap ensuring that it makes good skin contact. Connect the grounding clip to an *unpainted surface* of the chassis frame to safely ground unwanted ESD voltages. If no wrist strap is available, ground yourself by touching the *unpainted* metal part of the chassis.
- For safety, periodically check the resistance value of the antistatic strap, which should be between 1 and 10 megohms.
- When temporarily storing a card make sure it is placed in an ESD bag.

- Cards in an earth grounded metal frame or casing do not require any special ESD protection.

## Battery Handling



This product includes a backup battery. There is a danger of explosion if the battery is replaced incorrectly. Replace the battery only with the same or equivalent type recommended by the manufacturer. Dispose of used batteries according to the manufacturer's instructions. Before disposing of your Grass Valley equipment, please review the *Disposal and Recycling Information* appendix.

## Cautions for LCD and TFT Displays



Excessive usage may harm your vision. Rest for 10 minutes for every 30 minutes of usage.

If the LCD or TFT glass is broken, handle glass fragments with care when disposing of them. If any fluid leaks out of a damaged glass cell, be careful not to get the liquid crystal fluid in your mouth or skin. If the liquid crystal touches your skin or clothes, wash it off immediately using soap and water. Never swallow the fluid. The toxicity is extremely low but caution should be exercised at all times.

## Mesures de sécurité et avis importants

La présente section fournit des consignes de sécurité importantes pour les opérateurs et le personnel de service. Des avertissements ou mises en garde spécifiques figurent dans le manuel, dans les sections où ils s'appliquent. Prenez le temps de bien lire les consignes et assurez-vous de les respecter, en particulier celles qui sont destinées à prévenir les décharges électriques ou les blessures.

## Signification des symboles utilisés



Signale la présence d'une tension élevée et dangereuse dans le boîtier de l'équipement ; cette tension peut être suffisante pour constituer un risque de décharge électrique.



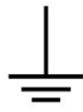
Avertit l'utilisateur, l'opérateur ou le technicien de maintenance que des instructions importantes relatives à l'utilisation et à l'entretien se trouvent dans la documentation accompagnant l'équipement.



Invite l'utilisateur, l'opérateur ou le technicien de maintenance à prendre note du calibre du fusible lors du remplacement de ce dernier. Le fusible auquel il est fait référence dans le texte doit être remplacé par un fusible du même calibre.



Identifie une borne de mise à la terre de protection. Il faut relier cette borne à la terre avant d'effectuer toute autre connexion à l'équipement.



Identifie une borne de mise à la terre externe qui peut être connectée en tant que borne de mise à la terre supplémentaire.



Signale la présence de composants sensibles à l'électricité statique et qui sont susceptibles d'être endommagés par une décharge électrostatique. Utilisez des procédures, des équipements et des surfaces antistatiques durant les interventions d'entretien.



Le symbole ci-contre signifie que l'appareil comporte plus d'un cordon d'alimentation et qu'il faut débrancher tous les cordons d'alimentation avant toute opération d'entretien, afin de prévenir les chocs électriques.



La marque C-CSA-US certifie que l'appareil visé a été testé par l'Association canadienne de normalisation (CSA) et reconnu conforme aux exigences applicables en matière de sécurité électrique en vigueur au Canada et aux États-Unis.



La marque C-UL-US certifie que l'appareil visé a été testé par Underwriters Laboratory (UL) et reconnu conforme aux exigences applicables en matière de sécurité électrique en vigueur au Canada et aux États-Unis.



La marque ETL Listed d'Intertek pour le marché Nord-Américain certifie que l'appareil visé a été testé par Intertek et reconnu conforme aux exigences applicables en matière de sécurité électrique en vigueur au Canada et aux États-Unis.



Le marquage CE indique que l'appareil visé est conforme aux exigences essentielles des directives applicables de l'Union européenne en matière de sécurité électrique, de compatibilité électromagnétique et de conformité environnementale.



Le symbole ci-contre sur un appareil Grass Valley ou à l'intérieur de l'appareil indique qu'il est conforme aux normes applicables en matière de sécurité laser.

## Avertissements



Les avertissements signalent des conditions ou des pratiques susceptibles d'occasionner des blessures graves, voire fatales. Veuillez vous familiariser avec les avertissements d'ordre général ci-dessous :

- Un cordon d'alimentation dûment homologué doit être utilisé pour connecter l'appareil à une tension de secteur de 120 V CA ou 240 V CA.
- La protection de ce produit contre les courts-circuits (surintensités) dépend de l'installation électrique du bâtiment. Assurez-vous qu'un fusible ou un disjoncteur pour 120 V CA ou 240 V CA est utilisé sur les conducteurs de phase.
- Dans le présent manuel, toutes les instructions qui nécessitent d'ouvrir le couvercle de l'équipement sont destinées exclusivement au personnel technique qualifié.
- N'utilisez pas cet appareil dans un environnement humide.

- Cet équipement est mis à la terre par le conducteur de mise à la terre des cordons d'alimentation. Pour éviter les chocs électriques, branchez les cordons d'alimentation sur une prise correctement câblée avant de brancher les entrées et sorties de l'équipement.
- Acheminez les cordons d'alimentation et autres câbles de façon à ce qu'ils ne risquent pas d'être endommagés. Supportez correctement les enroulements de câbles afin de ne pas endommager les connecteurs.
- Coupez l'alimentation avant de nettoyer l'équipement. Ne pas utiliser de nettoyeurs liquides ou en aérosol. Utilisez uniquement un chiffon humide.
- Des tensions dangereuses peuvent exister en plusieurs points dans cet équipement. Pour éviter toute blessure, ne touchez pas aux connexions ou aux composants exposés lorsque l'appareil est sous tension.
- Avant de procéder à toute opération d'entretien ou de dépannage, enlevez tous vos bijoux (notamment vos bagues, votre montre et autres objets métalliques).
- Pour éviter tout risque d'incendie, utilisez uniquement les fusibles du type et du calibre indiqués sur l'équipement ou dans la documentation qui l'accompagne.
- Ne pas utiliser cet appareil dans une atmosphère explosive.
- Présence possible de courants de fuite. Un raccordement à la masse est indispensable avant la mise sous tension.
- Après tout travail d'entretien ou de réparation, faites effectuer des contrôles de sécurité par le personnel technique qualifié.

## Mises en garde



Les mises en garde signalent des conditions ou des pratiques susceptibles d'endommager l'équipement. Veuillez vous familiariser avec les mises en garde ci-dessous :

- L'appareil est conçu pour être installé dans un endroit à accès restreint.
- Au moment d'installer l'équipement, ne fixez pas les cordons d'alimentation aux surfaces intérieures de l'édifice.
- Les produits qui n'ont pas d'interrupteur marche-arrêt et qui disposent d'une source d'alimentation externe doivent être installés à proximité d'une prise de courant facile d'accès.
- Si l'équipement n'est pas pourvu d'un modules d'alimentation auto-adaptables, vérifiez la configuration de chacun des modules d'alimentation avant de les mettre sous tension.
- Assurez une ventilation adéquate. Pour éviter toute surchauffe du produit, assurez une ventilation de l'équipement conformément aux instructions d'installation.
- N'utilisez pas l'équipement si vous suspectez un dysfonctionnement du produit. Faites-le inspecter par un technicien qualifié.
- Pour réduire le risque de choc électrique, n'effectuez pas de réparations autres que celles qui sont décrites dans le présent manuel, sauf si vous êtes qualifié pour le faire. Confiez les réparations à un technicien qualifié. La maintenance doit se réaliser dans un milieu libre d'électricité statique.



- L'appareil peut comporter plus d'un cordon d'alimentation. Afin de prévenir les chocs électriques, débrancher tous les cordons d'alimentation avant toute opération d'entretien.
- Veillez à toujours prendre les mesures de protection antistatique appropriées quand vous manipulez l'équipement.

## Protection contre les décharges électrostatiques (DES)



Une décharge électrostatique peut se produire lorsque des composants électroniques ne sont pas manipulés de manière adéquate, ce qui peut entraîner des défaillances intermittentes ou endommager irrémédiablement un circuit électrique. Au moment de remplacer une carte dans un châssis, prenez toujours les mesures de protection antistatique appropriées :

- Assurez-vous que le châssis est relié électriquement à la terre par le cordon d'alimentation ou tout autre moyen disponible.
- Portez un bracelet antistatique et assurez-vous qu'il est bien en contact avec la peau. Connectez la pince de masse à une *surface non peinte* du châssis pour détourner à la terre toute tension électrostatique indésirable. En l'absence de bracelet antistatique, déchargez l'électricité statique de votre corps en touchant une surface métallique *non peinte* du châssis.
- Pour plus de sécurité, vérifiez périodiquement la valeur de résistance du bracelet antistatique. Elle doit se situer entre 1 et 10 mégohms.
- Si vous devez mettre une carte de côté, assurez-vous de la ranger dans un sac protecteur antistatique.
- Les cartes qui sont reliées à un châssis ou boîtier métallique mis à la terre ne nécessitent pas de protection antistatique spéciale.

## Remplacement et élimination des piles



L'appareil renferme une pile. Pour réduire le risque d'explosion, vérifiez la polarité et ne remplacez la pile que par une pile du même type, recommandée par le fabricant. Mettez les piles usagées au rebut conformément aux directives du fabricant. Avant de vous défaire de l'équipement, assurez-vous d'avoir lu l'appendice *Disposal and Recycling Information*.

## Précautions pour les écrans LCD et TFT



Regarder l'écran pendant une trop longue période de temps peut nuire à votre vision. Prenez une pause de 10 minutes, après 30 minutes d'utilisation.

Si l'écran LCD ou TFT est brisé, manipulez les fragments de verre avec précaution au moment de vous en débarrasser. veillez à ce que le cristal liquide n'entre pas en contact avec la peau ou la bouche. En cas de contact avec la peau ou les vêtements, laver immédiatement à l'eau savonneuse. Ne jamais ingérer le liquide. La toxicité est extrêmement faible, mais la prudence demeure de mise en tout temps.

## Recycling

Visit [www.grassvalley.com](http://www.grassvalley.com) for recycling information.

## Certification and Compliance

### Safety Compliance



This equipment complies with the requirements of CSA/UL/IEC/EN 60950-1, 2<sup>nd</sup> Ed. + AM1: 2009, AM2:2013, AM22014, Safety of information technology equipment.

The power cords supplied with this equipment meet the appropriate national standards for the country of destination.

K-FRM-CTRL-CS, K-FRM-INPUT, K-FRM-IO, K-FRM-IO-10GE, K-FRM-ME-DPM-S, K-FRM-OUTPUT and KRR-PRO-PS 部件名称 Part name	铅 (Pb)	汞(Hg)	镉(Cd)	六价铬 (Cr6)	多溴联苯 (PBB)	多溴二苯 (PBDE)
电路模块 Circuit Modules	X	O	O	O	O	O
金属零件 Metal Parts	X	O	O	O	O	O
有毒有害物质或元素 (Toxic or hazardous Substances and Elements)						
KOR-PNL-LAN-20 部件名称 Part name	铅 (Pb)	汞(Hg)	镉(Cd)	六价铬 (Cr6)	多溴联苯 (PBB)	多溴二苯 (PBDE)
电缆及电缆组件 Cables and Cable Assemblies	X	O	O	O	O	O
有毒有害物质或元素 (Toxic or hazardous Substances and Elements)						
KOR-PNL-KIT 部件名称 Part name	铅 (Pb)	汞(Hg)	镉(Cd)	六价铬 (Cr6)	多溴联苯 (PBB)	多溴二苯 (PBDE)
电路模块 Circuit Modules	X	O	O	O	O	O
<p>O: 表示该有毒有害物质在该部件所有均质材料中的含量均在 SJ/T 11364-2014 规定的限量要求以下。                      O: Indicates that this toxic or hazardous substance contained in all of the homogeneous materials for this part is below the limit requirement in GB/T 26572-2011.</p> <p>X: 表示该有毒有害物质至少在该部件的某一均质材料中的含量超出 SJ/T 11364-2014 规定的限量要求。                      X: Indicates that this toxic or hazardous substance contained in at least one of the homogeneous materials for this part is above the limit requirement in GB/T 26572-2011.</p> <p>技术条款解释:                      此声明所依据之数据由 Grass Valley 环境管理部门向我们的部件供应商获取。Grass Valley 公司相信此信息的正确性, 但由于数据来源于公司外部, 我们无法保证它的完整和准确。所有这些特性可能在未获通知的情况下更改。</p> <p>Technical explanations:                      This statement is based on the information provided by our suppliers of components and collected through our Grass Valley's environmental management system. Grass Valley believes this environmental information to be correct but cannot guarantee its completeness or accuracy as it is based on data received from sources outside our company. All specifications are subject to change without notice.</p>						

## Electromagnetic Compatibility



This equipment has been tested for verification of compliance with FCC Part 15, Subpart B requirements for class A digital devices.

---

**Note:** This equipment has been tested and found to comply with the limits for a Class A digital device, pursuant to Part 15 of the FCC rules. These limits are designed to provide reasonable protection against harmful interference when the equipment is operated in a commercial environment. This equipment generates, uses, and can radiate radio frequency energy, and, if not installed and used in accordance with the instruction manual, may cause harmful interference to radio communications. Operation of this equipment in a residential area is likely to cause harmful interference in which case the user will be required to correct the interference at his own expense.

---



This equipment has been tested and found to comply with the requirements of the EMC directive 2004/108/EC:

- EN 55022 Class A Radiated and conducted emissions
- EN 61000-3-2 Limits for harmonic current emissions
- EN 61000-3-3 Limitation of voltage fluctuations and flicker
- EN 61000-4-2 Electrostatic discharge immunity
- EN 61000-4-3 Radiated, radio-frequency, electromagnetic field immunity
- EN 61000-4-4 Electrical fast transient immunity
- EN 61000-4-5 Surge transient immunity
- EN 61000-4-6 Conducted disturbances immunity
- EN 61000-4-8 Power frequency magnetic field immunity
- EN 61000-4-11 Voltage dips, short interruptions and voltage variations immunity



# GV Convergent Quick Start

The purpose of the *GV Convergent Quick Start Guide* is to provide the minimum steps required to install and configure a GV Convergent Controller. The steps include both the hardware and software installation and configuration.

## Summary

*Requirements, on page 1*

*Verifying the GV Convergent Kit, on page 2*

*Installing the GV Convergent Controller, on page 2*

*Powering on a GV Convergent Controller, on page 3*

*Configuring GV Convergent, on page 3*

*Installing GV Convergent Client, on page 7*

## Requirements

Before you begin, ensure that you have the following:

- GV Convergent Kit
- Management Ethernet cable
- *SuperMicro, SuperServer® Manual*, available on the Super Micro website ([www.supermicro.com/manuals/superserver/1U/MNL-1591.pdf](http://www.supermicro.com/manuals/superserver/1U/MNL-1591.pdf))

Ensure that you know the following:

- Management Interface IP address
- Network mask
- Gateway server address
- A PC with the following configuration for the GV Convergent Client application:

### Client platform specifications for optimal performance

Operating System	Microsoft Windows 10, Windows 8.1, Windows 8, or Windows 7
Processor	Intel Core i3, the minimum required by the operating system, or better
Memory	8 GB RAM minimum, the minimum required by the operating system, or more
Disk Space	The minimum required by the operating system plus one GB, or more
Supported Web Browser	Google Chrome only (most recent version)

## Step 1: Verifying the GV Convergent Kit

**IMPORTANT:** Please verify the completeness and condition of all parts before performing the procedures in this guide. If any items are missing or damaged, contact Grass Valley Customer Support immediately.

### GV Convergent Kit Contents

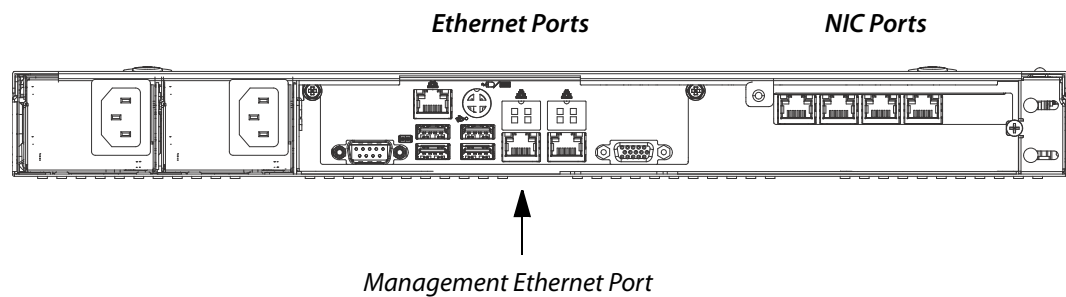
- 1-RU SuperMicro© SYS-6018R-MTR server (1)
- Power cords (2)
- Rack mounting kit (1)

## Step 2: Installing the GV Convergent Controller

**Note:** Before attempting to install the chassis into a server rack, we recommend that you read the **Warnings and Precautions** section in the Server Installation chapter of the *SuperServer 6018R-MTR Series User's Manual*.

### To install the GV Convergent Controller hardware

- 1 Install your GV Convergent hardware in a rack following the directions in the *SuperServer Installation Manual*.
- 2 Connect your management Ethernet cable to the management Ethernet port. By default, this is the Ethernet port on the left (em1).



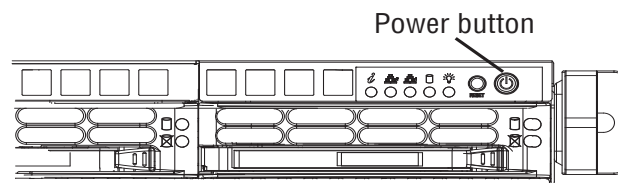
## Step 3: Powering on a GV Convergent Controller

To power on a GV Convergent Controller for the first time:

- 1 Remove the bezel, following the directions in the *SuperMicro, SuperServer® Manual*.



- 2 Press the Power button.



## Step 4: Configuring GV Convergent

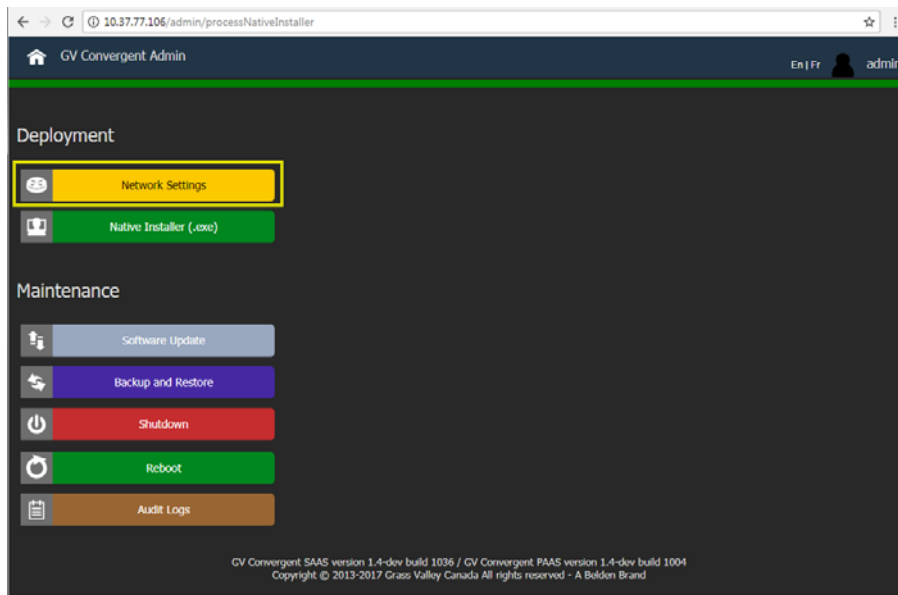
**Note:** Ensure that the PC or laptop, you are using to connect to GV Convergent, is within the same subnet as the management Ethernet port (em1) on GV Convergent.

To configure the GV Convergent Controller Network Settings

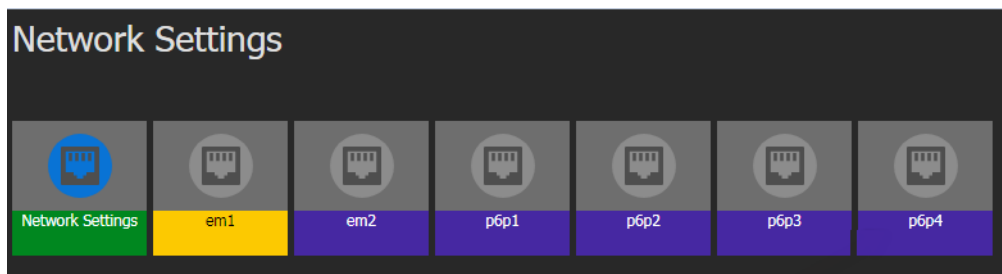
- 1 In a web browser, enter the Management IP address of the GV Convergent controller.  
The default is 10.0.3.10.  
The GV Convergent login screen appears.



- 2 Enter **admin** in both the **User name** and **Password** text boxes and click **Log in**.  
The main GV Convergent Admin screen appears.



- 3 Click **Network Settings**.  
The Network Settings screen appears.



**Note:** The external NIC ports are listed in reverse order on the UI, due to Known Issue PEG #8585.

The following table shows how the Ethernet and the NIC ports on GV Convergent Admin UI correspond to the physical ports on the GV Convergent Controller. See the diagram in [step 2](#) on page 2.

GV Convergent Admin UI	GV Convergent Controller
<b>Ethernet Ports</b>	
em1	left
em2	right
<b>NIC Ports</b>	
p6p4	left
p6p3	2nd from the left



GV Convergent Admin UI	GV Convergent Controller
p6p2	2nd from the right
p6p1	right

## Configuring the Network Management Interface

The next step is to configure the Network Management port. This is done on the Network Settings page.

### To configure the Ethernet Management Port

- 1 On the Network Settings page, select your management Ethernet port.

The screenshot shows the 'Network Settings' page. On the left, there are several interface icons: 'Network Settings' (green), 'em1' (yellow, selected), 'em2' (purple), 'p6p1' (purple), 'p6p2' (purple), 'p6p3' (purple), and 'p6p4' (purple). On the right, the configuration for the selected 'em1' interface is displayed in a table:

Interface Name	em1
Description	Management Network
HW Address	0c:c4:7a:7e:c5:cc
Status	UP
IP Address	192.168.1.15
Network Mask	255.255.255.0
Gateway	192.168.1.1

At the bottom right, there are 'Apply' and 'Revert' buttons.

This is the Ethernet port you used for connecting the management Ethernet cable. By default, it is **em1**.

- 2 Enter meaningful text to identify the port, such as **Management Network**, in the **Description** text box.
- 3 Enter the management interface IP address in the **IP address** text box.
- 4 Enter the address of the network mask in the **Network Mask** text box.
- 5 Enter the gateway server IP address in the **Gateway** text box.
- 6 Click **Apply**.  
The network service restarts automatically.
- 7 Verify network connectivity with the server using the *ping* command.

## Enabling the Network Interfaces

**Note:** Due to Known Issue PEG #8585, only the em1 interface is enabled on startup of GV Convergent Admin. Therefore, you must enable all other network interfaces manually, as in the following procedure.

### To enable the Network Interfaces

- 1 Launch PuTTY and connect to your controller via SSH.
- 2 Ensure that the network interfaces you are enabling are added to the interfaces file on the controller: `/etc/network/interfaces`  
In this procedure, the second Ethernet port is em2. The NIC ports are p6p1 to p6p4.
- 3 Enter **auto em2** to enable em2.  
Using the `auto` command ensures that the interface is enabled when GV Convergent is rebooted.
- 4 Enter **auto p6p1** to enable p6p1.
- 5 Enter **auto p6p2** to enable p6p2.
- 6 Enter **auto p6p3** to enable p6p3.
- 7 Enter **auto p6p4** to enable p6p4.
- 8 Enter **reboot** to restart the GV Convergent controller.
- 9 Verify network connectivity on each port using the `ping` command if IP addresses are assigned.

This procedure is illustrated in the following example.

```
# This file describes the network interfaces available on your system
# and how to activate them. For more information, see interfaces(5).
# The loopback network interface
auto lo
iface lo inet loopback
# The primary network interface
auto em1
auto p6p1
# dns-nameservers 10.36.140.10 10.36.40.10 <--= use
/etc/resolvconf/resolv.conf.d.base
iface em1 inet static
    role            Management
    name            Management Network
    address         10.37.72.52
    netmask         255.255.255.0
    network         10.37.72.0
    broadcast       10.37.72.255
    gateway         10.37.72.1
#           dns-* options are implemented by the resolvconf package, if
installed
iface p6p1 inet static
    name            TEST
    address         192.168.0.10
    netmask         255.255.255.0
    network         192.168.0.0
    broadcast       192.168.0.255
```

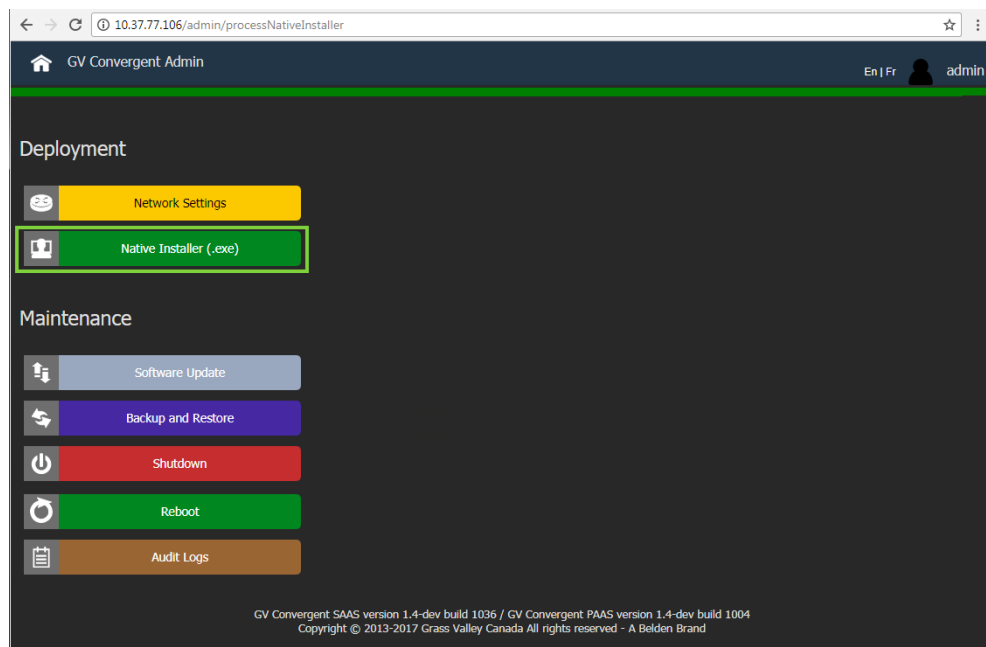
## Step 5: Installing GV Convergent Client

### To install GV Convergent Client

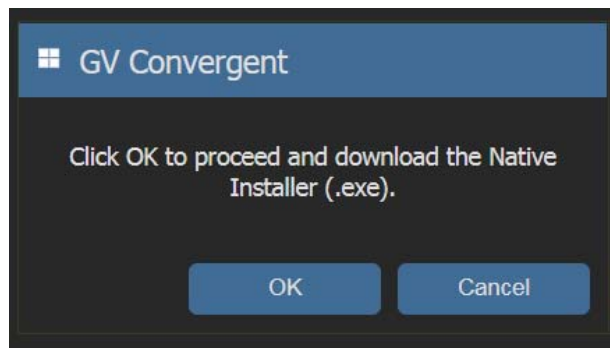
- 1 In a web browser, enter the Management IP address of the GV Convergent server.  
The default is 10.0.3.10.  
The GV Convergent login screen appears.



- 2 Enter **admin** in both the **User name** and **Password** text boxes and click **Log in**.  
The main GV Convergent Admin screen appears.

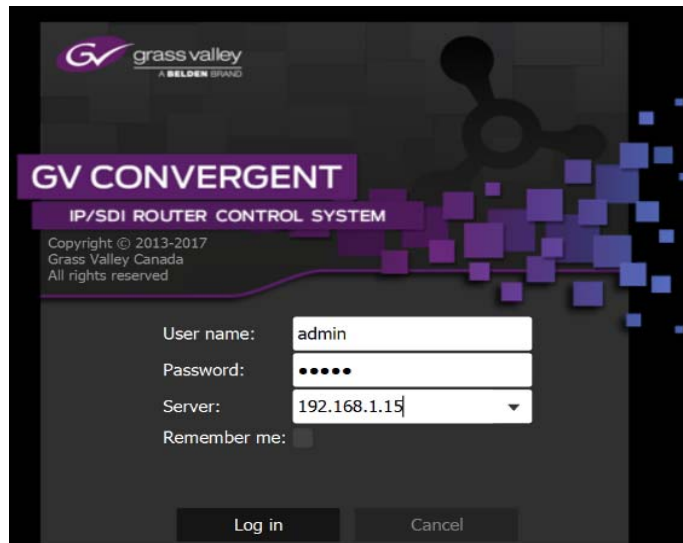


- 3 Click **Native Installer**.  
You are prompted to download and install GV Convergent Client.

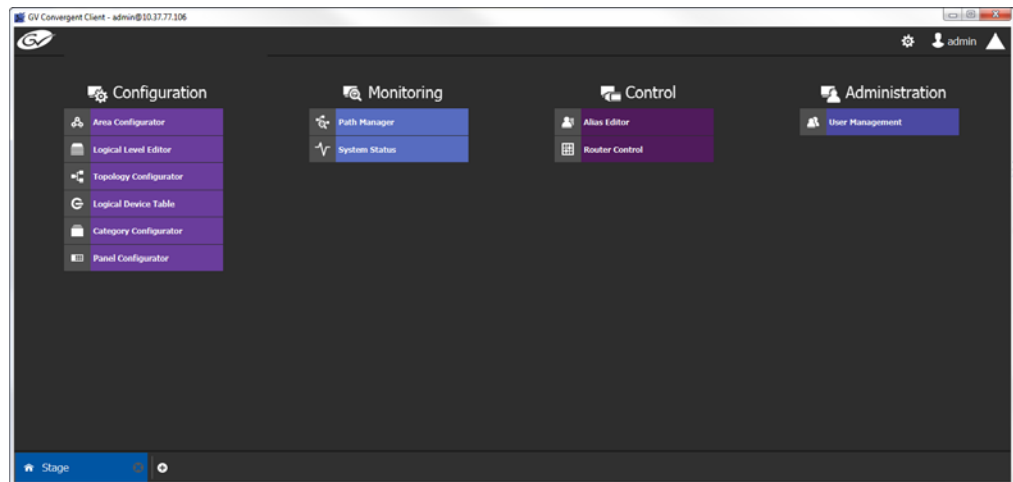


- 4 Click **OK** to continue.
- 5 Open the `GVConvergentClient.exe` file from your local download folder.
- 6 Click **Run**.

When the installation procedure is completed, the GV Convergent Client login screen appears.



- 7 Enter **admin** in both the **User name** and **Password** text boxes.
- 8 Enter the GV Convergent controller IP address in the **Server** text box.
- 9 Click **Log in**.
- 10 The GV Convergent Client appears.



GV Convergent tasks are grouped under Configuration, Monitoring, Control, and Administration.

---

**TIP** After opening tasks, click the blue plus (+) button to return to the main Stage task window.

---





## **Grass Valley Technical Support**

For technical assistance, contact our international support center, at 1-800-547-8949 (US and Canada) or +1 530 478 4148.

To obtain a local phone number for the support center nearest you, please consult the Contact Us section of Grass Valley's website ([www.grassvalley.com](http://www.grassvalley.com)).

An online form for e-mail contact is also available from the website.

## **Corporate Head Office**

Grass Valley  
3499 Douglas-B.-Floreani  
St-Laurent, Quebec H4S 2C6  
Canada  
Telephone: +1 514 333 1772  
Fax: +1 514 333 9828  
[www.grassvalley.com](http://www.grassvalley.com)