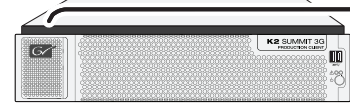


K2 Summit 3G Production Client Quick Start Guide

071-8722-03 February 2, 2012

Before you begin, unpack the following items.



K2 Summit 3G Production Client

Recovery Flash Drive contains:

- K2 Release Notes
- K2 Doc Set
- Software and disk images.

NOTE: Do not lose the Recovery Flash Drive. It contains the recovery disk image for this specific K2 Summit system.



Rack slides



Licenses and Warranties



Power cords



LTC cables

Locate the documentation you need on the Recovery Flash Drive or download from http://www.grassvalley.com/dl/k2_summit

Documentation path to install K2 Summit system with internal storage



Documentation path to install K2 Summit systems with SAN or direct-connect storage

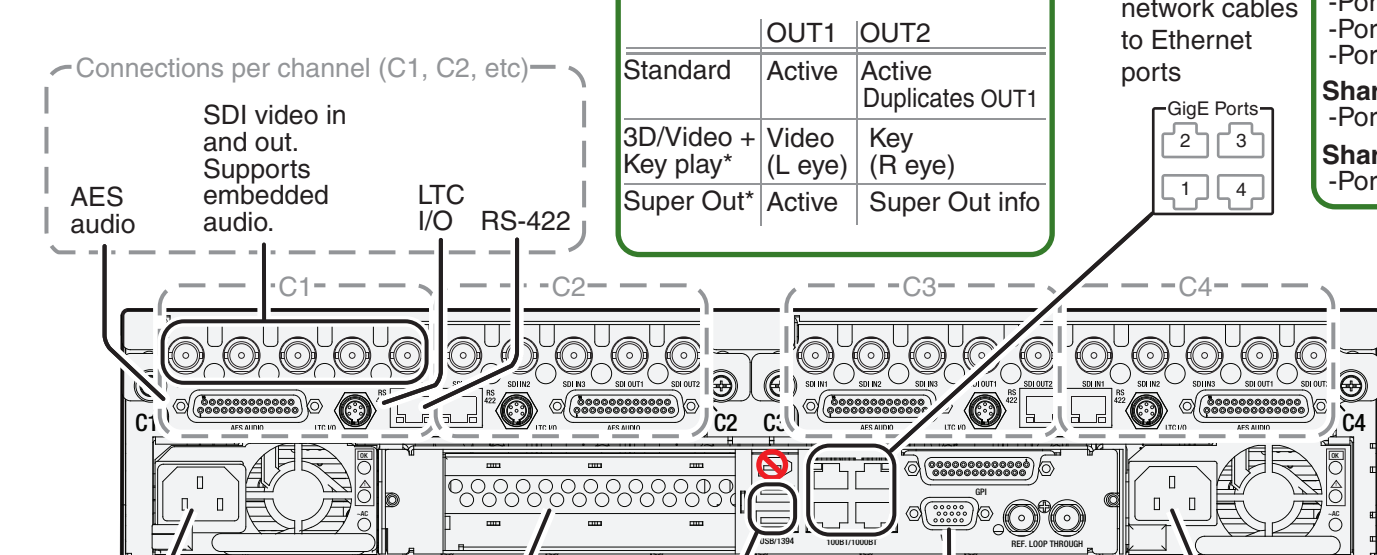


*Cabling Guide packed with RAID primary chassis

1. Make cable connections

Standard bi-directional channels
Each channel (C1, C2, etc.) can be an input (record channel) or an output (play channel). Connect video/audio IN and OUT to each channel, as appropriate for your intended use.

1 Make SDI connections on each channel

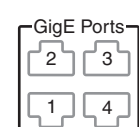


- 5 Connect power cord
- Optional Fibre Channel card for connection to standalone direct-connect storage or shared Fibre Channel storage.
- 3 Connect keyboard and mouse
- 4 Connect VGA monitor
- 5 Connect power cord

SDI connections

	IN1	IN2	IN3
Standard	Active		
Multi-Cam*	Video1	Video2	
3D/Video + Key record*	Video (L eye)	Key (R eye)	
Super Slo-Mo*	Phase1	Phase2	Phase3
	OUT1	OUT2	
Standard	Active	Active Duplicates OUT1	
3D/Video + Key play*	Video (L eye)	Key (R eye)	
Super Out*	Active	Super Out info	

2 Connect network cables to Ethernet ports



Ethernet cabling
Internal or direct-connect storage:
-Port 1 - Control network
-Port 2 - FTP/Streaming
-Ports 3 & 4 - Not used
Shared iSCSI storage basic:
-Port 1 - Control network
-Port 2 - Media (iSCSI) network
Shared iSCSI storage redundant:
-Port 1 & 4 - Control network
-Port 2 - Media (iSCSI) network A
-Port 3 - Media (iSCSI) network B
Shared FC storage basic:
-Port 1 - Control network
Shared FC storage redundant:
-Port 1 & 4 - Control network

*Some SDI connections require special licensing and configuration. Refer to the *K2 AppCenter User Manual*.

Make other connections as needed. Refer to the *K2 System Guide* for complete instructions.

2. Start up

- Before power on, take note of the chassis serial number, located behind the bezel/fan.
- Identify the Recovery Flash Drive, which is labeled with this unit's serial number. Make sure it remains stored with this specific unit.
- Replace the bezel/fan and identify the following:
Service LED, Standby switch, Power LED
- Press the standby switch to power on.
- Log on with the default Windows admin account:
-Username: Administrator
-Password: adminGV!
- On the Windows desktop, check the system tray. When the network icon indicates connectivity, the K2 Summit system is operational.

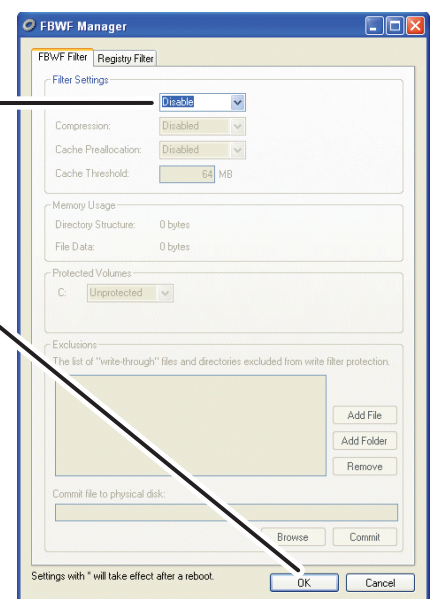
Normal startup sequence
Power LED goes on and stays on. Service LED stays off.

3. Disable write filter

The K2 Summit system has a file-based write filter to protect from changes and increase on-air reliability. The write filter must be disabled before making changes and enabled after changes are complete.

Disable the write filter as follows:

- Click **Start | All Programs | Grass Valley | Write Filter Utility**. FBWF Manager opens.
- Set Filter to **Disable**.
- Click **OK**.
- When prompted, restart the K2 Summit Production Client.



To enable the write filter, set Filter to **Enable** and restart.

4. Configure network and, if necessary, storage

- Use SiteConfig as appropriate for your K2 system and on-site networking.
 - Stand-alone internal or direct-connect storage** – Install SiteConfig on a control point PC, discover the K2 Summit system, and configure network interfaces.
 - Configure Control Team for the control network.
 - If desired, configure Media Connection #1 for the FTP/Streaming network.
 Refer to *K2 Release Notes* for instructions.
 - Shared storage** – Configure network interfaces as instructed in the *K2 SAN Installation and Service Manual*.
- Configure network name resolution via host files or otherwise, as required by on-site networking. FTP/Streaming network hostnames must include “_he0” suffix.
- Configure storage as follows:
 - Internal storage** – No storage configuration is necessary. Storage is pre-configured.
 - Direct-connect storage** – Use Storage Utility to Bind RAID disks and make file system. Refer to the *K2 System Guide*.
 - Shared storage** – Use the K2Config application to add the K2 Summit system to the K2 SAN and configure it on the SAN. Refer to the *K2 SAN Installation and Service Manual*.
- When changes are complete, enable the write filter.

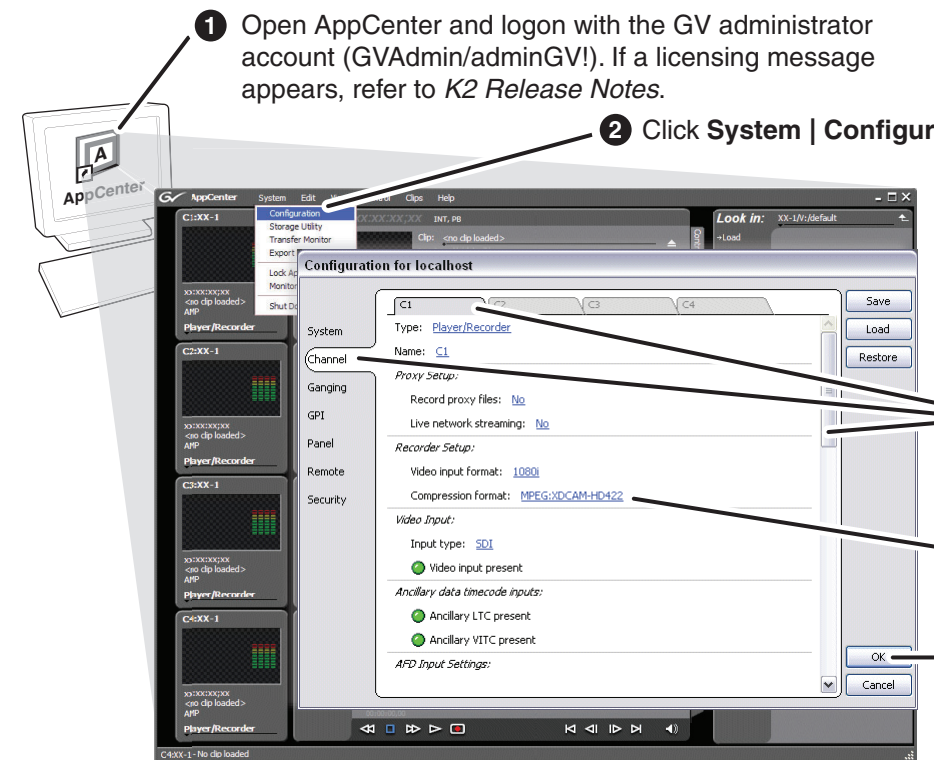
Default network settings
DHCP is enabled and the chassis serial number is the hostname.

Ethernet connection names

This rear panel GigE port...	Is named this in Windows Network Connections...
1	Control Team (Control Connection #1)
2	Media Connection #1
3	Media Connection #2
4	Control Team (Control Connection #2)

5. Configure channels

- Open AppCenter and logon with the GV administrator account (GVAdmin/adminGV!). If a licensing message appears, refer to *K2 Release Notes*.
- Click **System | Configuration**.
- Click tabs, buttons, and scroll bar to locate settings.
- Select from drop-down lists to make settings.
- Click **OK** and **Yes** to save settings.



Continue with Quick Start procedures on the reverse side.

6. Record and play

Bi-directional channels

A channel becomes an input channel when you begin recording. The same channel becomes an output channel when you load a clip for playback.

1 Select a channel

2 Begin record

3 Stop record

4 Drag a clip into the channel

5 Adjust audio level as needed

6 Play the clip

Timecode for Record

On the AppCenter menu, click **Control | Options**. On the Options dialog box click **Timecode** and select the timecode for recording and display.

7. Create a playlist

1 Select Playlist

2 Drag clips into the channel

3 Play the list

Refer to the AppCenter Help menu for complete information about playlist functionality and other operations, such as editing subclips.

8. Monitor

Click **View | Video Monitor**

- Toolbar
- Full Screen
- Video Monitor

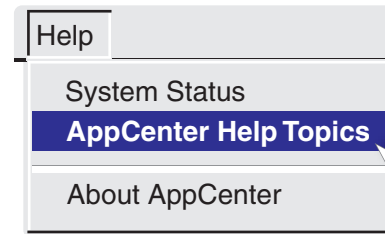
Video monitor support

The VGA resolution must be 1024 x 768 x 32 or greater to support live (moving) video monitoring.



9. For more information...

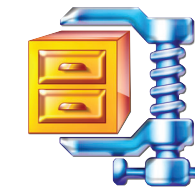
In AppCenter, click **Help | AppCenter Help Topics** and read the complete documentation for operating and configuring K2 Summit system channels.



Go to <http://www.grassvalley.com/support> and find solutions to problems.



Find the complete documentation set for K2 products in the K2 Doc Set zip file on the Recovery Flash Drive or by downloading from http://www.grassvalley.com/dl/k2_summit.



- User Guide
- System Guide
- Service Manual
- SAN Manual
- Cabling Guide
- RAID Instruction Manuals



Use the following information to contact product support by phone during business hours. Afterhours phone support is available for warranty and contract customers.

International (France)	+800 80 80 20 20
International (United States, Canada)	+33 1 48 25 20 20
	+800 547 8949
	+1 530 478 4148

Go to <http://www.grassvalley.com/support/contact> for phone numbers to contact your local support center directly during normal business hours.

