

Profile XP PVS3000 & 3500

MEDIA PLATFORMS FOR STANDARD AND HIGH DEFINITION

Installation Guide

SOFTWARE VERSION 5.4

071-8255-01
JULY 2004

the most watched worldwide

Copyright

Copyright © 2004 Thomson Broadcast and Media Solutions, Inc. All rights reserved. Printed in the United States of America.

This document may not be copied in whole or in part, or otherwise reproduced except as specifically permitted under U.S. copyright law, without the prior written consent of Thomson Broadcast and Media Solutions, Inc., P.O. Box 59900, Nevada City, California 95959-7900

Trademarks

Grass Valley, Profile, and Profile XP are either registered trademarks or trademarks of Thomson Broadcast and Media Solutions, Inc. in the United States and/or other countries. Other trademarks used in this document are either registered trademarks or trademarks of the manufacturers or vendors of the associated products. Thomson Broadcast and Media Solutions, Inc. products are covered by U.S. and foreign patents, issued and pending. Additional information regarding Thomson Broadcast and Media Solutions, Inc. trademarks and other proprietary rights may be found at www.thomsongrassvalley.com.

Disclaimer

Product options and specifications subject to change without notice. The information in this manual is furnished for informational use only, is subject to change without notice, and should not be construed as a commitment by Thomson Broadcast and Media Solutions, Inc. Thomson Broadcast and Media Solutions, Inc. assumes no responsibility or liability for any errors or inaccuracies that may appear in this publication.

**U.S. Government
Restricted Rights
Legend**

Use, duplication, or disclosure by the United States Government is subject to restrictions as set forth in subparagraph (c)(1)(ii) of the Rights in Technical Data and Computer Software clause at DFARS 252.277-7013 or in subparagraph c(1) and (2) of the Commercial Computer Software Restricted Rights clause at FAR 52.227-19, as applicable. Manufacturer is Thomson Broadcast and Media Solutions, Inc., P.O. Box 59900, Nevada City, California 95959-7900 U.S.A.

Revision Status

Rev Date	Description
February 23, 2004	First release. 071-8255-00
23 July 2004	Removed PFC500 and PRF500 RAID..

Before getting started

This installation guide provides step-by-step instructions for installing the PVS3000 and PVS3500 Media Platforms using factory default settings. After installing the Profile XP Media Platform using this installation guide, you can refer to the *Profile XP System Guide* to customize system settings for your installation.

For Grass Valley Customer Support information, refer to page 45 of this Installation Guide.

About channels and factory default configuration

Profile applications use channels to control disk recording and playback. A channel defines a grouping of Profile XP video, audio, and timecode resources and is identified by a unique name. Profile XP software supports three channel types: Recorder channel, Player channel, or Player/Recorder channel. For more information on channel types and creating or modifying channels, refer the *Profile XP System Guide*.

Your Profile XP Media Platform is shipped with default Recorder and Player channels. These default channels are named Vtr1, Vtr2, Vtr3 and so on. The following table describes the video and audio connections you'll make for the two channel types. On the pages that follow, you'll find specifics about the type and number of default channels in your system, and their video and audio I/O connections.

Default channel type	Video I/O connections	Audio connections ^a	Timecode I/O
Recorder	1 SD SDI video input or 1 HD SDI video input	2, 4, or 8 audio I/Os	Uses the internal timecode generator.
Player	1 SD SDI video output or 1 HD SDI video output	2, 4, or 8 audio I/Os	Recorded timecode is used to generate VITC on the HD SDI video output

^a. The number of audio I/Os is determined by your PVS3000 Series model and the number of Audio boards installed.

Rack-mounting the Profile XP Media Platform Chassis

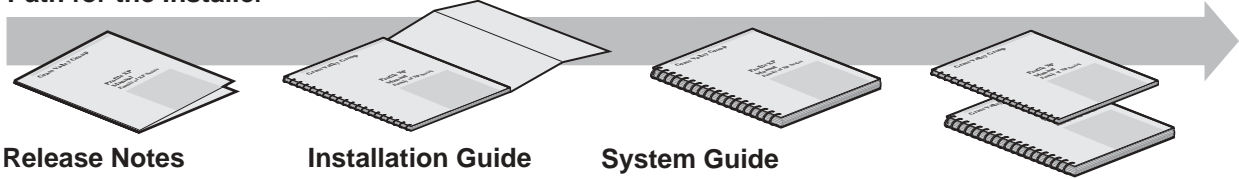
This procedure assumes you have already rack-mounted the PVS3000 or PVS3500, PFR600 or PFR700 Fibre Channel RAID Chassis, I/O Panel, and audio interface option as required. For rack-mounting information, see Appendix C, "Rack Mounting Information and Rear Panel Drawings" in the *Profile XP System Guide*.



Referring to Related Documentation

This manual is part of a full set of support documentation for the Profile XP Media Platform. The following illustrates how to use the Profile XP documentation depending on the task you are performing.

Path for the Installer



Release Notes

Contains the latest information about Profile XP hardware and software shipped with your system.

Installation Guide

Contains essential steps for installing your Profile XP system with local storage, using factory default settings.

System Guide

Contains the product description and step-by-step instructions for modifying system settings.

Other Manuals

These manuals include:
- PFC500 Instruction Manual
- PFR500 Instruction Manual
- PFR600 Instruction Manual
- PFR700 Instruction Manual
- Profile XP Service Manual

Use alternate procedures for shared storage option.



Open SAN Instruction Manual and Release Notes

Contains instructions for installing storage that is shared by multiple Profile XP systems.

Path for the Operator



Release Notes

Contains the latest information about Profile XP hardware and software shipped with your system.

User Manuals

Contains complete instructions for using Profile applications. These manuals include:
- Profile XP User Manual
- Other user manuals you received with optional Profile applications.

Installers consult the User Manuals as needed.

Referring to Safety Summaries



WARNING: Be sure to review all safety precautions listed in the Profile XP System Guide in order to avoid personal injury and prevent damage to this product and its peripheral products.

Checking standard accessories

Your Profile XP Media Platform is shipped with several standard accessories as shown in the table. Locate the accessories you need for your installation and proceed.

Standard PVS3000 Accessories	
Keyboard and Mouse	Ethernet Cable
I/O Panel and interface cable	Windows NT Software Disk and Documentation
Rack-mount slides	Profile XP Software CD-ROM and Release Notes

About PVS3000 and PVS3500

The PVS 3000 Series introduces the ability to use standard and high definition hardware in the same Media Platform. Various models provide different capabilities, depending on the hardware and software licenses that you purchase.

PVS 3000

The PVS 3000 provides separate SD and HD hardware in a single Media Platform. You can define SD and HD channels that can run concurrently in your system.

SD channels allow you to record SD clips in MPEG (I-frame, Long GoP, or D-10), DVCPRO 25, and DVCPRO 50 formats using your standard definition SDI inputs. You can play clips in any combination of these formats on any SD channel using an SDI output.

HD channels let you record and play high definition clips with your HD-SDI inputs and outputs.

PVS 3500

The PVS 3500 includes an Agile Output software license that enables you to play SD and HD clips through an HD decoder.

If your Definition Independent HD/SD Player channel includes a standard definition SDI output, SD clips play out normally, and all HD clips are down-converted to SD format with the aspect ratio conversion that you set with Configuration Manager.

If your HD/SD Player channel includes an HD-SDI output, all HD clips play out in the configured output format for your system (1080i or 720p), and all SD clips are up-converted to HD format with the aspect ratio conversion that you set with Configuration Manager.

NOTE: SD clips must be in MPEG 4:2:0 format to play out on a Definition Independent channel.



System power-off and reboot procedure

When you power-off or reboot your Profile XP Platform and RAID storage system, you must follow the proper sequence as described in the following procedure.

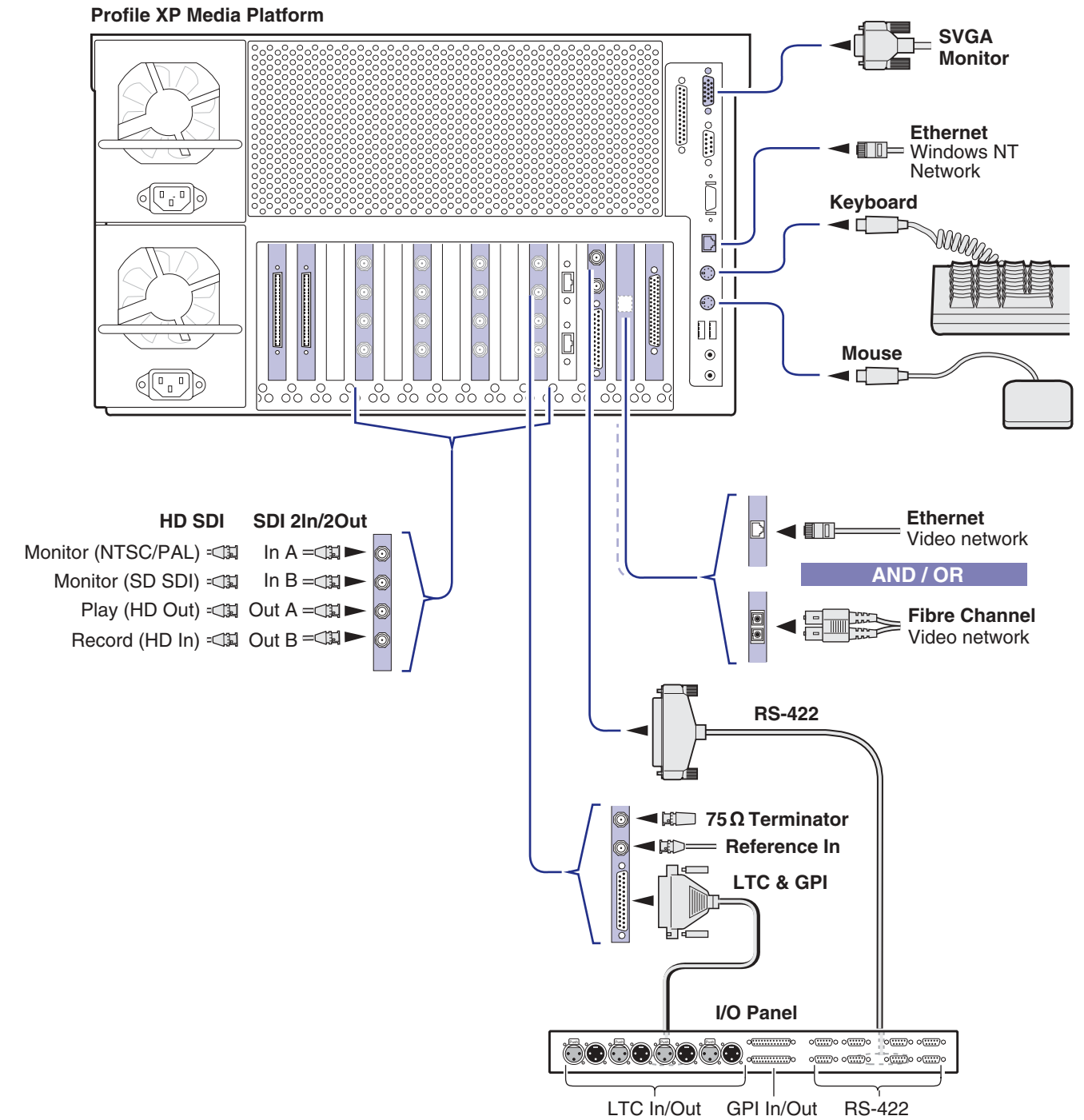
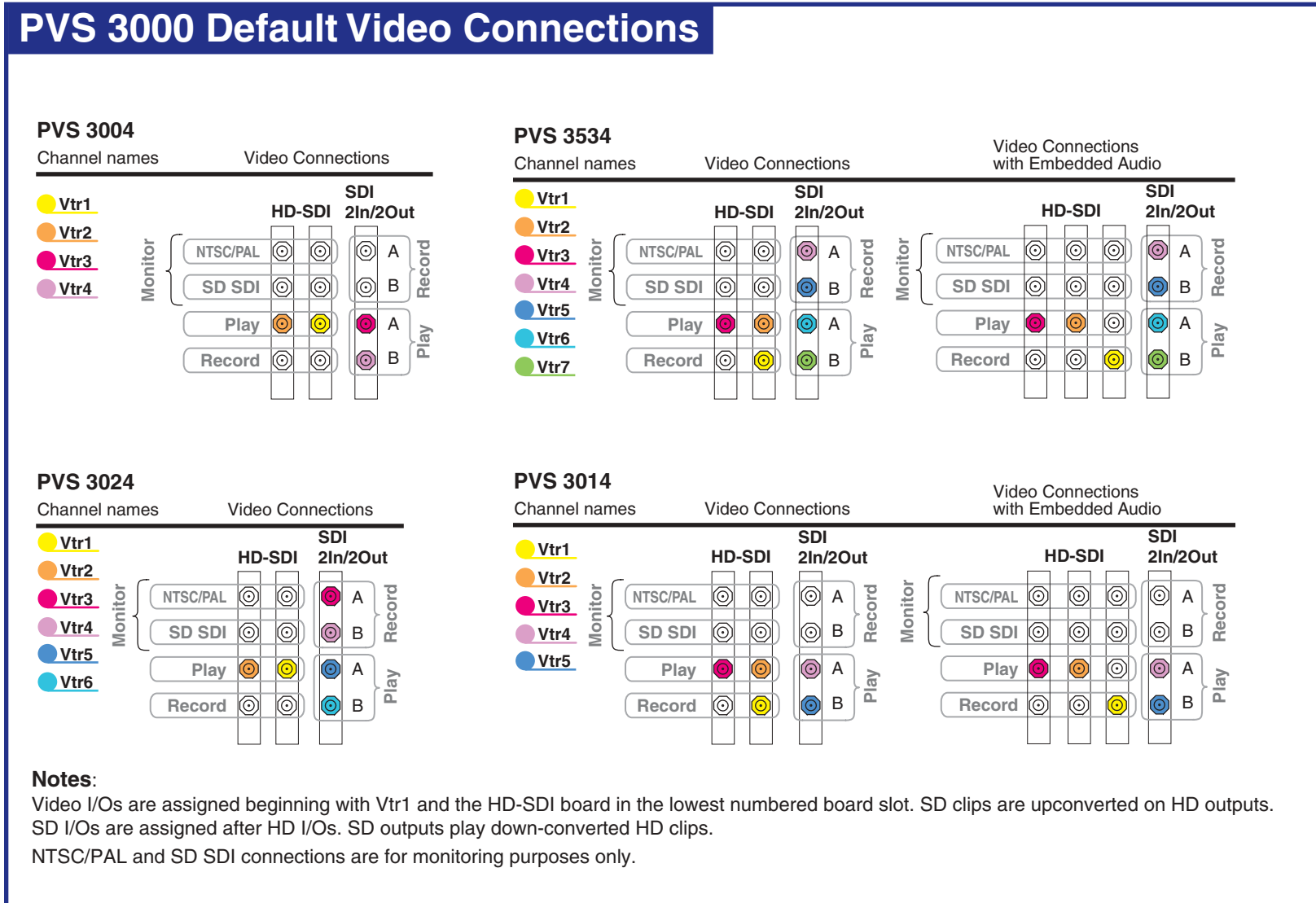
NOTE: *If your Profile XP Media Platform is part of an Open SAN, disregard this procedure, and refer to the instructions in the Open SAN Instruction Manual for shutting down the Open SAN.*

1. Power-off the RAID storage system by powering-off the RAID Controller chassis prior to, or at the same time as the RAID Expansion chassis.
2. Wait approximately 30 seconds for the disk drives to spin down, then power-on all RAID Expansion chassis, then all RAID Controller chassis. Always power-on the RAID Expansion chassis prior to, or at the same time as the RAID Controller chassis.
3. Wait for RAID storage initialization, as follows:
 - **PFR700 RAID Storage systems** - Wait until all disk access LEDs are steady — approximately 4 minutes. The controller READY LED must be ON, the front Power LED must be ON, and the front Service LED must be OFF. (Refer to the *PFR 700 Instruction Manual* to interpret other disk access LED or status LED behavior.)
 - **PFR600 RAID Storage systems** - Wait until all disk access LEDs are steady green— approximately 4 minutes. The rear panel 7-segment LED displays the chassis address. (Refer to the *PFR 600 Instruction Manual* to interpret other disk access LED or 7-segment LED behavior.)

On the Profile XP Media Platform, shut down and restart the Windows operating system. Wait for auto-logon as described in “Start your system” on page 13.

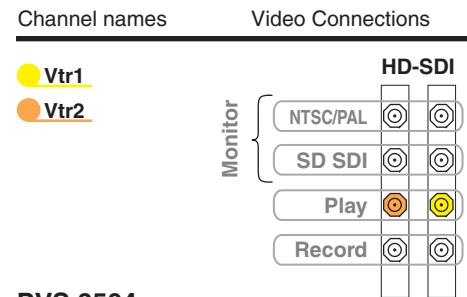
1 Set up system hardware and connect video

Using the diagrams on this or the following page, set up the system hardware as shown, then locate your PVS3000 Series model (PVS3000 or PVS3500) under Default Video Connections. Use the color coding to make the video I/O connections for the recorder and player channels.

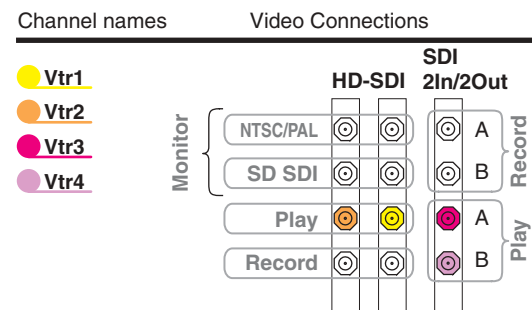


PVS 3500 Default Video Connections

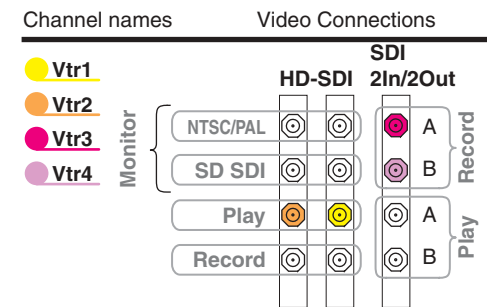
PVS 3502



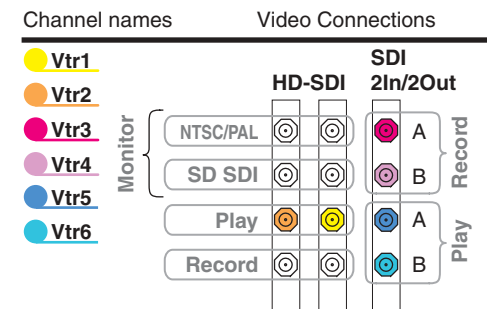
PVS 3504



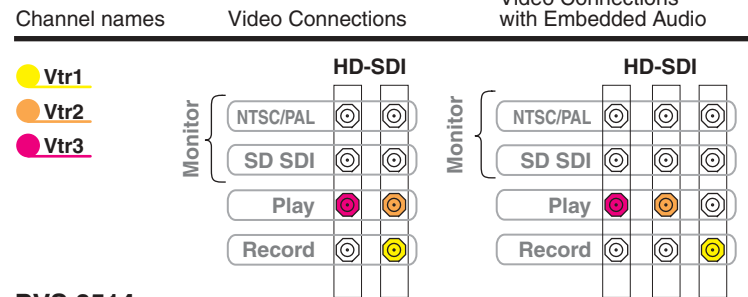
PVS 3522



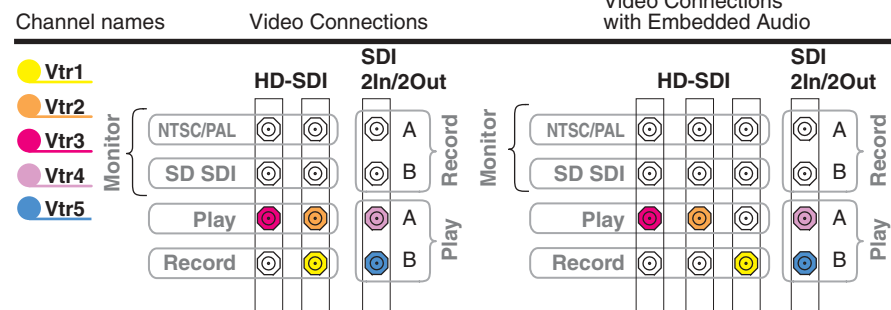
PVS 3524



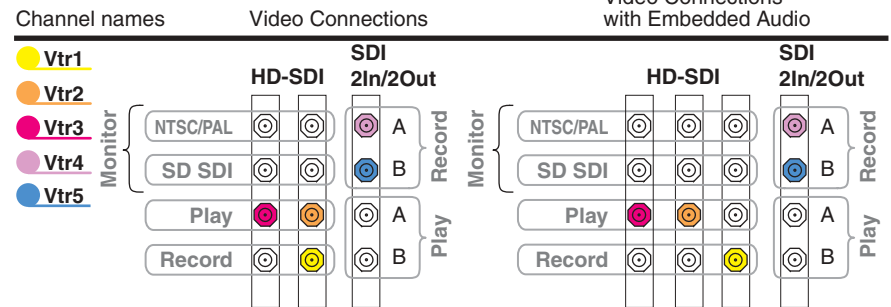
PVS 3512



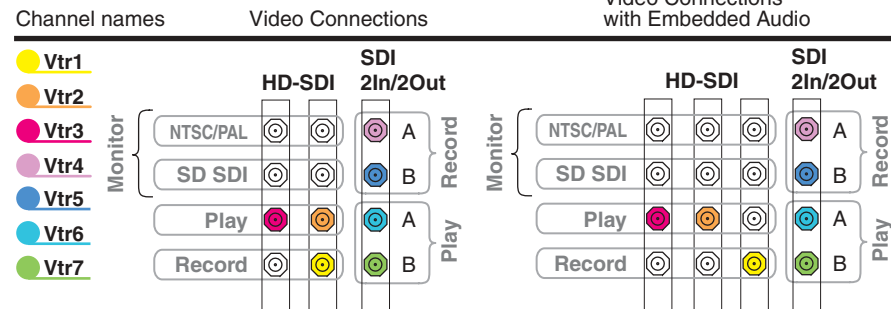
PVS 3514



PVS 3532



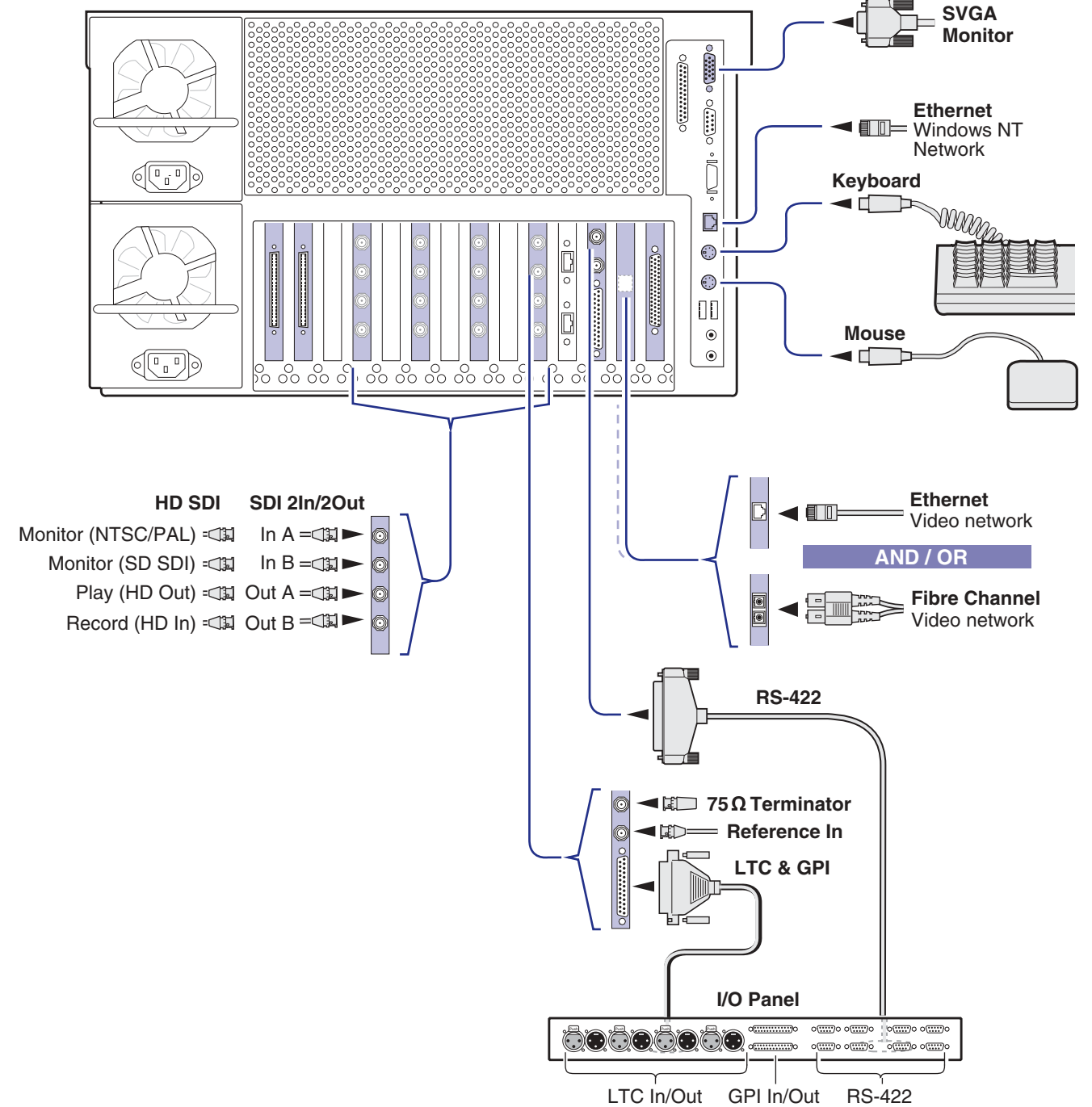
PVS 3534



Notes:

Video I/Os are assigned beginning with Vtr1 and the HD-SDI board in the lowest numbered board slot. SD clips are upconverted on HD outputs. SD I/Os are assigned after HD I/Os. SD outputs play down-converted HD clips. NTSC/PAL and SD SDI connections are for monitoring purposes only.

Profile XP Media Platform



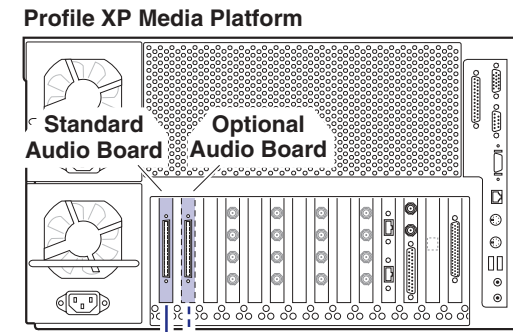
2 Connect audio

Determine if your PVS3000 Series media platform has one or two audio boards installed as shown on this diagram, then use the color coding to determine the audio I/O connections for each video channel for your model.

Channel Names	Audio I/O Assignments
Vtr1	1 - 2
Vtr2	3 - 4
Vtr3	5 - 6
Vtr4	7 - 8
Vtr5	9 - 10
Vtr6	11 - 12
Vtr7	13 - 14
Vtr8	15 - 16

Channel Names	Audio I/O Assignments
Vtr1	1 - 4
Vtr2	5 - 8
Vtr3	9 - 12
Vtr4	13 - 16
Vtr5	1 - 4
Vtr6	5 - 8
Vtr7	9 - 12
Vtr8	13 - 16

Opt. Bd
Std. Bd



Channel Names	Audio I/O Assignments
Vtr1	1 - 4
Vtr2	5 - 8
Vtr3	9 - 12
Vtr4	13 - 16
Vtr5	1 - 4
Vtr6	5 - 8
Vtr7	9 - 12
Vtr8	13 - 16

Opt. Bd
Std. Bd



Audio I/O Connections: One Audio Board Installed

PVS 3014, 3024, 3034, 3514, 3524, 3532, 3534

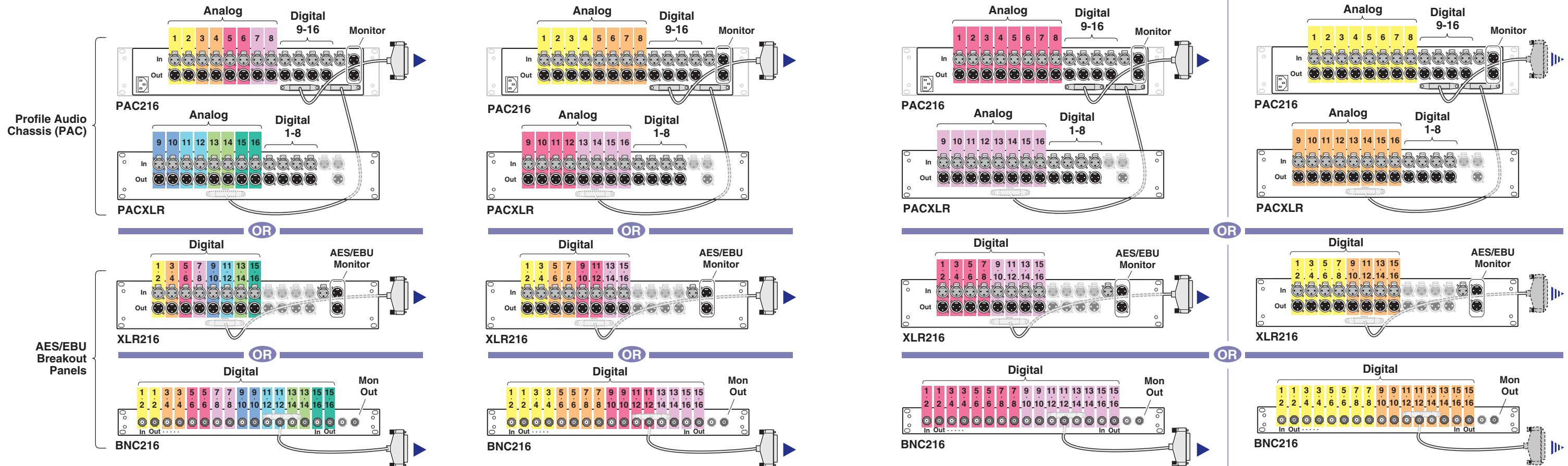
Audio I/O Connections: One Audio Board Installed

PVS 3004, 3502, 3504, 3512, 3522

Audio I/O Connections: Two Audio Boards Installed

To Standard Audio Board

To Optional Audio Board

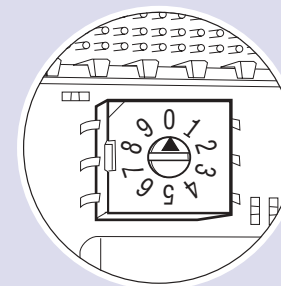
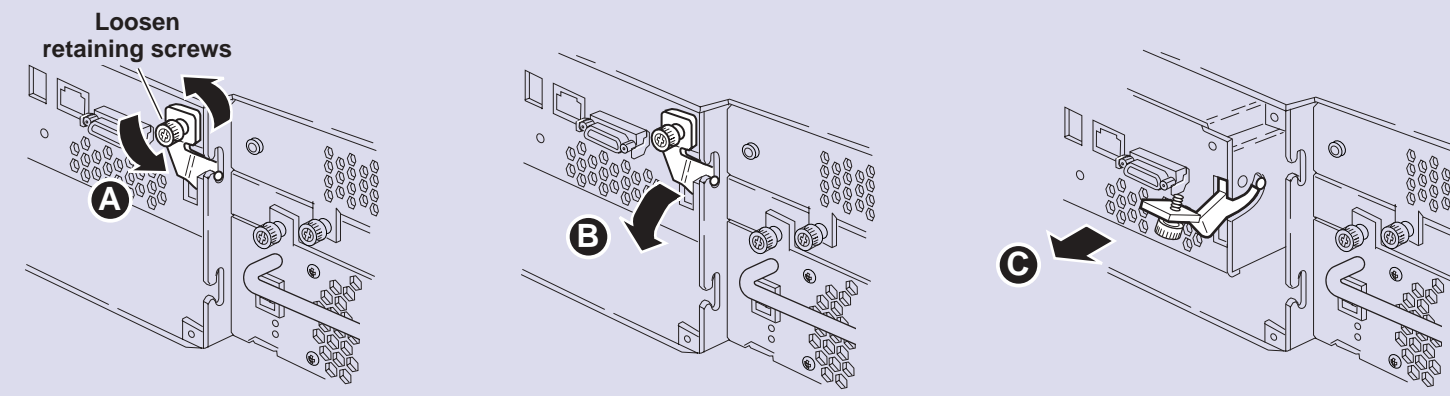


IMPORTANT: If you are installing your PVS3000 Series (PVS3000 or PVS3000 Series) as part of an Open SAN, do not perform this RAID storage setup. Instead, follow the instructions in the Open SAN Instruction Manual for setting up RAID storage.

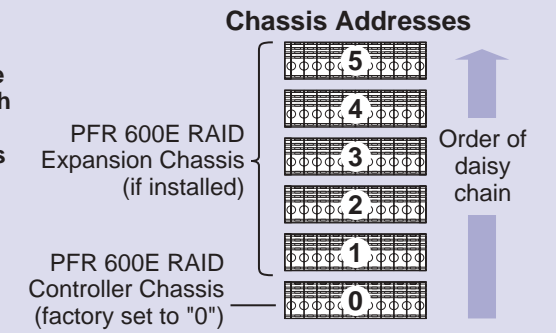
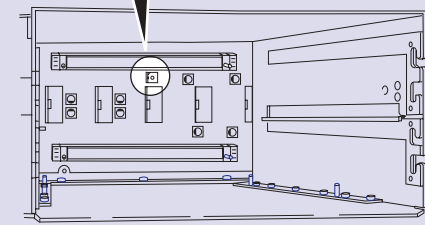
3 Set up the RAID Storage: PFR 600/E (Local storage only)

Use this diagram to set up the PFR 600/E chassis addresses and to connect Fibre Channel cabling, then proceed to step 3a on the next page.

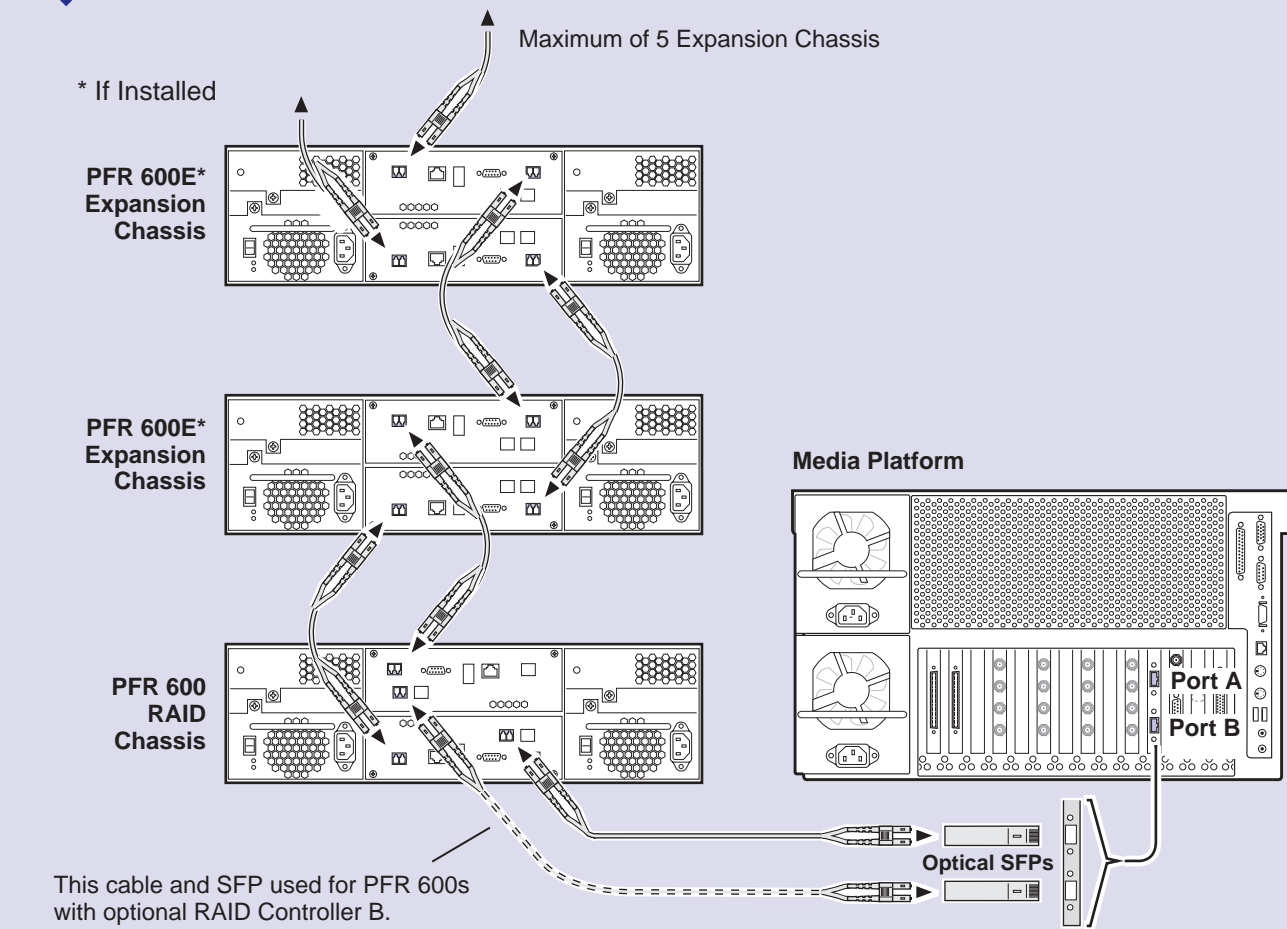
1 Set chassis addresses on all PFR 600E Expansion Chassis.



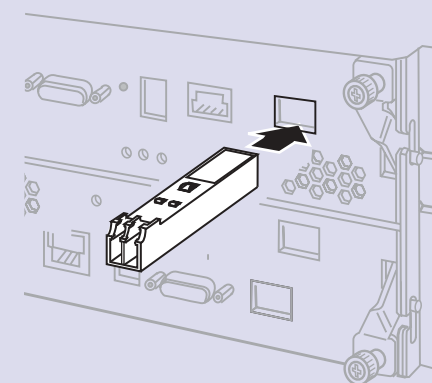
D Remove both Loop Bypass Board modules to access the chassis address switch on the midplane board. Set the switch to the appropriate address as shown in the Chassis Address diagram.



2 Install all SFPs provided so that you can connect Fibre Channel cabling as shown.



Installing an SFP (Small Form-Factor Pluggable Interface)



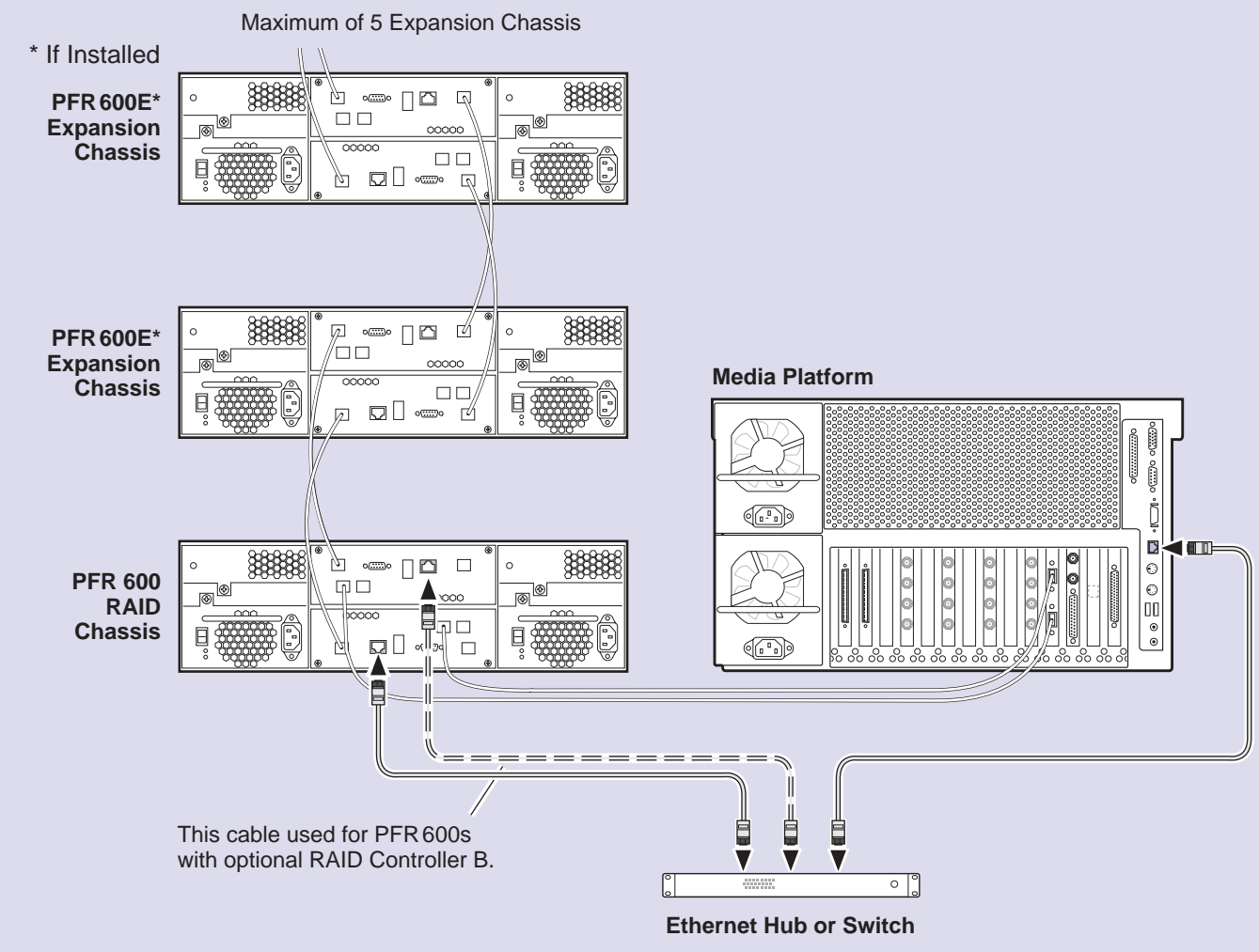
3a

Set up RAID Storage: PFR 600/E (Local storage only)

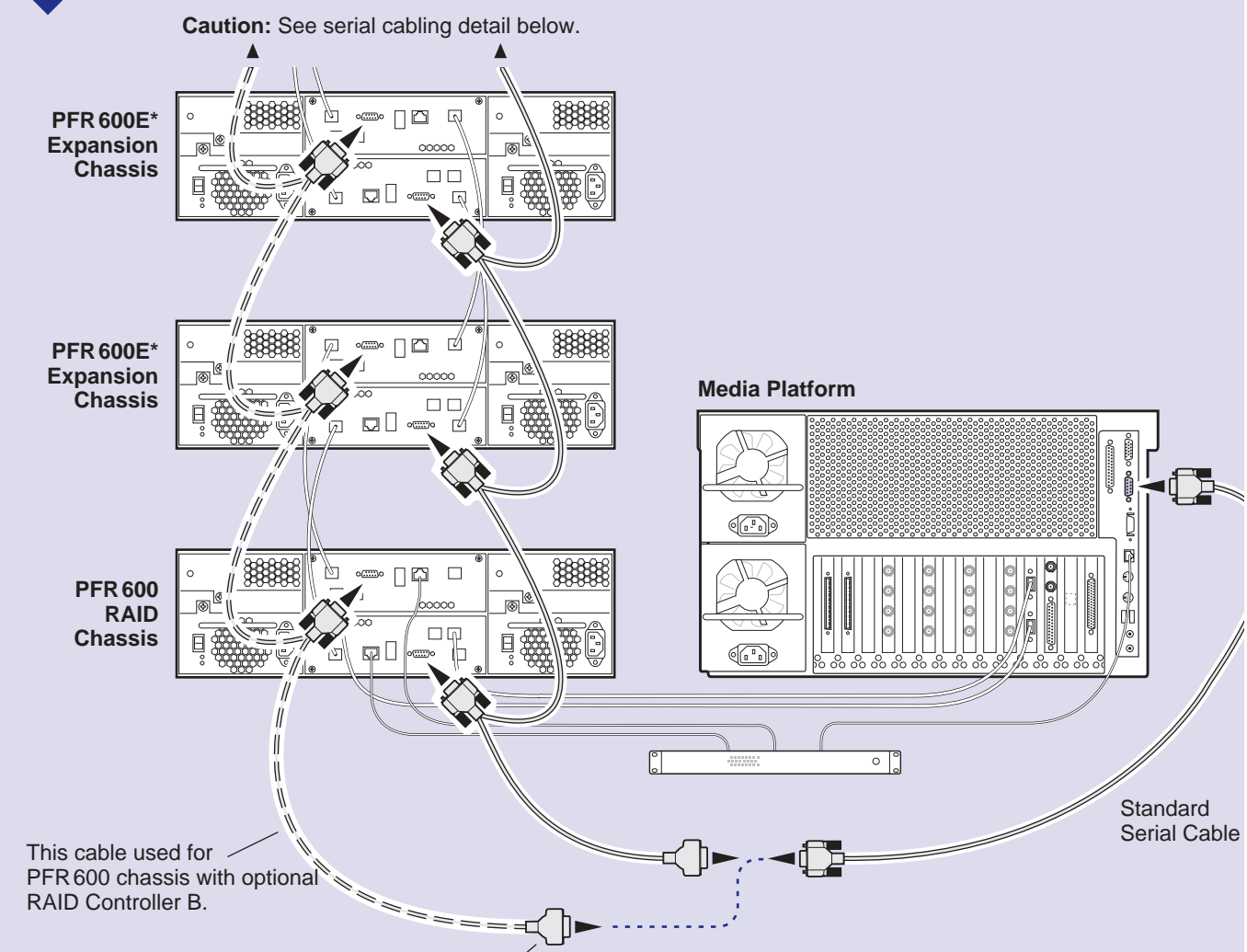
Use this diagram to connect Ethernet and serial interface cabling required for monitoring the PFR 600/E with NetCentral Lite or NetCentral Manager and microcode updates.

IMPORTANT: If you are installing your PVS3000 as part of an Open SAN, do not perform this RAID storage setup. Instead, follow the instructions in the Open SAN Instruction Manual for setting up RAID storage.

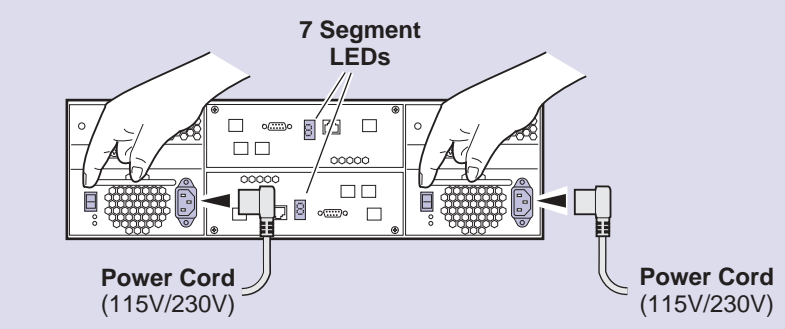
3 Install ethernet cabling and switch or hub as shown.



4 Install serial cabling as shown.

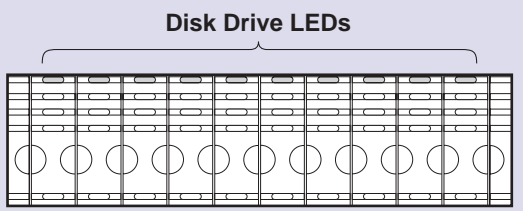


5 Connect power cords, and turn on power as shown. You must power-up the PFR 600E Expansion chassis prior to, or at the same time as the PFR 600 RAID Controller chassis. Verify power-up as shown.

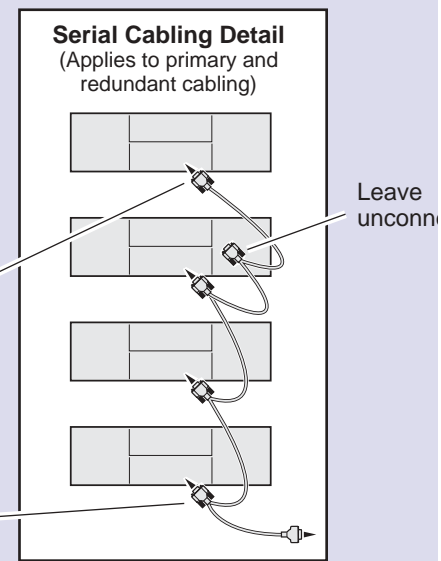


Power-up Verification

- Rear panel "7 Segment LED" displays the chassis address as set in step 1.
- All disk drive LEDs are green after approximately 3 minutes.
- Refer to the PFR 600 Instruction Manual if there is a problem.



After RAID Controller A is configured, the standard serial cable will be moved to this connector to configure RAID Controller B, if installed.



Always plug the end connector of daisy chain cable into last expansion chassis.

3b Set up the RAID Storage: PFR 700/E (Local storage only)

Use this diagram to set up the PFR 700/E Fibre Channel addresses and to connect Fibre Channel, Ethernet, and diagnostic cabling.

IMPORTANT: If you are installing your PVS 3000 as part of a Media Area Network, do not perform this RAID storage setup. Instead, follow the instructions in the Open SAN Instruction Manual for setting up RAID storage.

1 Set Fibre Channel addresses on both PFR 700 controllers.

Address ID = 2*
*If Installed

Address ID = 1

3 Connect Fibre Channel cabling as shown.

* If Installed Maximum of 1 Expansion Chassis

PFR 700E* Expansion Chassis

PFR 700 RAID Chassis

Media Platform

Port A

Port B

Optical SFPs

This cable and SFP used for PFR 700 with optional RAID Controller 1.

5 Connect power cords, and turn on power as shown. You must power-up the PFR 700E Expansion chassis prior to, or at the same time as the PFR 700 RAID Controller chassis. Verify power-up as shown.

Ready LED

Ready LED

Power Cords (115V/230V)

2 Set the same Chassis Address and diagnostic ID on both PFR 700E Expansion Adapters, if installed.

Chassis Address = 1

ID = "0"

4 Install Ethernet and diagnostic cabling as shown.

* If Installed

PFR 700E* Expansion Chassis

PFR 700 RAID Chassis

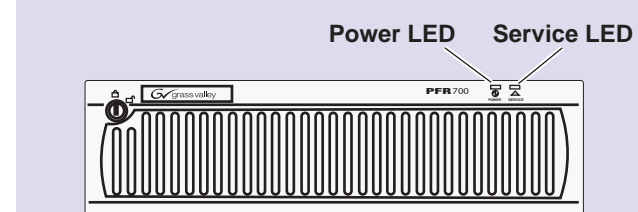
Media Platform

Ethernet cables

Ethernet Hub or Switch

Diagnostic cables*

- Power-up Verification**
- Ready LEDs on RAID controllers are steady ON.
 - Front panel Power LED is ON, Service LED is OFF after approximately 3 minutes.
- Refer to the *PFR 700 Instruction Manual* if there is a problem.

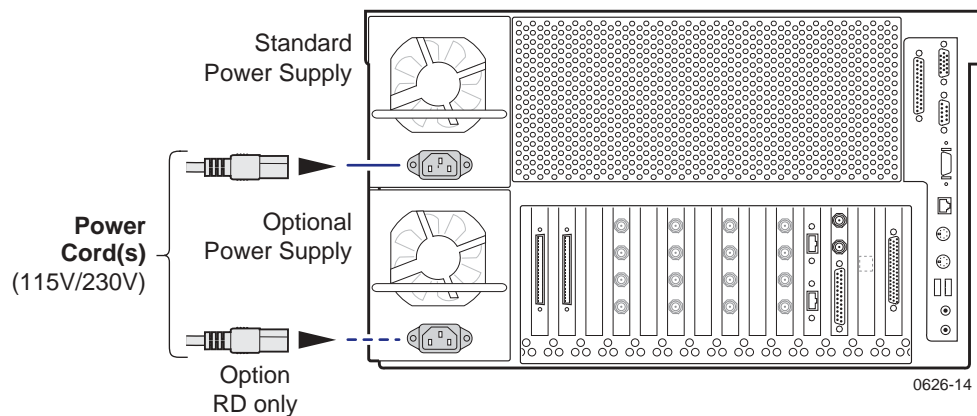


4 Start your system

IMPORTANT: If you are installing your Profile XP Media Platform as part of an Open SAN, disregard this step. Instead, follow the instructions in the Open SAN Instruction Manual for starting your Profile XP Media Platform.

To start your system:

1. Connect power cords to the Profile XP Media Platform and all peripheral devices.



2. Turn on power to all peripheral devices connected to the Profile XP Media Platform.

NOTE: Do not power-on the Profile XP Media Platform until the RAID storage system is fully initialized. Refer to RAID storage power-up verification steps on pages 10-12.

3. Turn on the Profile XP Media Platform using the front panel standby switch, and wait for Windows NT to initialize and perform auto-logout. The Windows NT desktop will appear after successful auto-logout.

During initialization, the Profile XP system software checks the RAID storage system for a video file system. Since at first power-up one is not found, an error message may be displayed regarding loss of the video file system.

Proceed with the next procedure to create a new video file system.

NOTE: You must use the proper power-off sequence when turning off or rebooting the Profile XP Platform and RAID storage system. Refer to “System power-off and reboot procedure” on page 6.



Start your system

5 Create a video file system

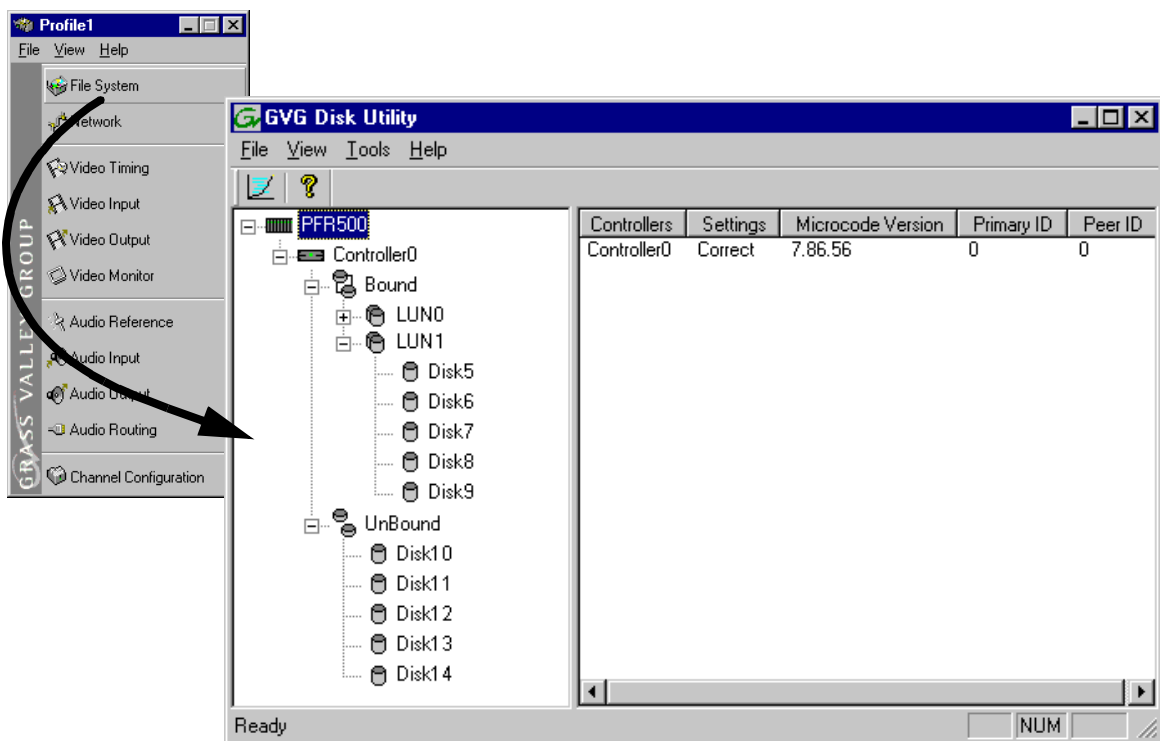
IMPORTANT: If you are installing your Profile XP Media Platform as part of an Open SAN, disregard this step. Instead, follow the instructions in the Open SAN Instruction Manual for starting your Profile XP Media Platform.

Before you can use your Profile XP Media Platform system, you must create a video file system on the Fibre Channel RAID Chassis using the Disk Utility.

NOTE: If you want to configure some drives as hot spare drives, do not perform this procedure. Instead, perform the procedures found in Chapter 3 of the Profile XP System Guide in the section titled “Configuring RAID storage using GVG Disk Utility”, then proceed with the next procedure in this guide.

To create a video file system:

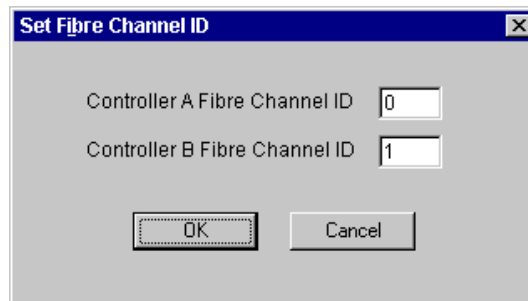
1. Start Configuration Manager using the desktop shortcut or by selecting **Start | Programs | Profile Applications | Configuration Manager**. The Configuration Manager dialog box appears.



2. Click **File System** to start the GVG Disk Utility.

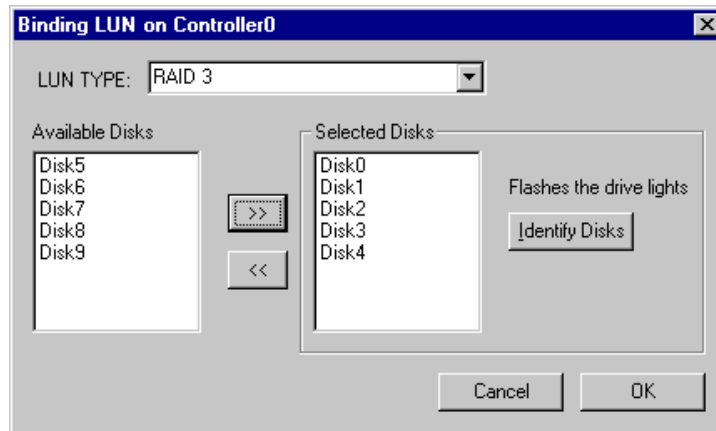



3. If you are configuring a PFR 600 storage system, perform the following steps to set the Fibre Channel ID, otherwise, proceed to step 4.
 - a. Expand the tree view and right-click the **Controller0** icon under PFR 600, then select **Set Fibre Channel ID** in the context menu.



- b. In the Set Fibre Channel ID dialog box, enter IDs as shown, then click **OK**.
 - c. Click **OK** in the Operation Successful dialog box.
 - d. Cycle the power on the RAID Controller chassis. Leave the power off for about 30 seconds before powering on again. You can leave the Expansion chassis powered on during this time.
 - e. After the RAID Controller chassis has finished initializing, restart the Windows NT operating system on the Profile XP Platform.
 - f. Start Configuration Manager using the desktop shortcut or by selecting **Start | Programs | Profile Applications | Configuration Manager**.
 - g. In Configuration Manager dialog box appears. click **File System** to start the GVG Disk Utility.
 4. Expand the tree view and identify bound LUNs and unbound disks by their placement in the hierarchy of the tree view.
 5. If there are unbound LUNs displayed in the tree view, you must perform the following steps, otherwise, proceed to step 6.
 - a. To bind unbound disks, right-click the **Unbound** node for a controller, then select **Bind LUNs** in the context menu. Peer controllers that share the same set of disks are automatically selected as a pair.

The Binding LUN... dialog box opens showing all unbound disks for the controller listed in the Available Disk list.



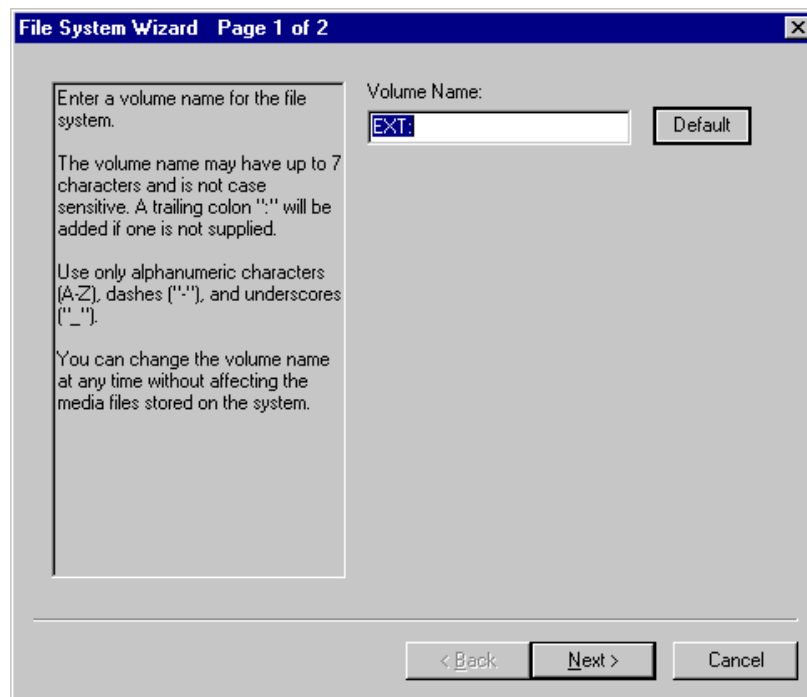
- b. Select RAID 3 using the LUN TYPE drop-down box.
- c. Select five contiguous disks, then click the add button  to add them to the Selected Disks list. (TIP: Use 'shift-click' to select disks.)
- d. Click **OK** to close the Binding LUN... dialog box and begin the binding process. The Progress Report dialog box opens, showing the status of the binding process.
- e. Repeat step a through step d for all unbound disks on all remaining controllers displayed in the tree view.

NOTE: PFR 600 controllers take less than a minute to bind a LUN, but can bind only one LUN at a time. You must wait until binding is completed before binding the next LUN. PFR 700 controllers take several hours to bind a LUN, but allow multiple binding processes at the same time.

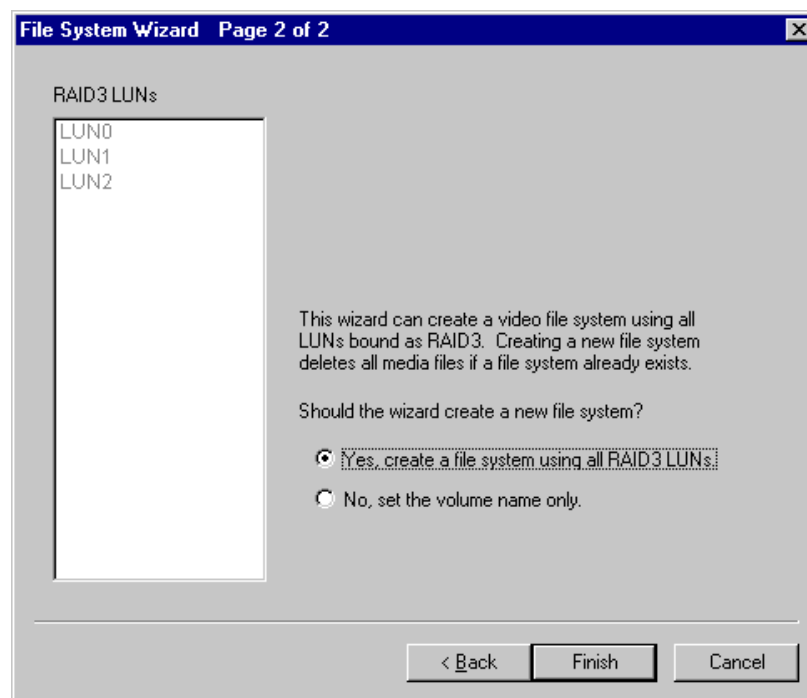
- f. Upon 100% completion, click **Close** in Progress Report window.

NOTE: Do not proceed until all LUNs are finished binding.

- g. Restart the Windows NT operating system on the Profile XP Platform.
 - h. Start Configuration Manager using the desktop shortcut or by selecting **Start | Programs | Profile Applications | Configuration Manager**.
 - i. In Configuration Manager, click **File System** to start the GVG Disk Utility.
6. In the GVG Disk Utility main menu, click **Tools | Make File System**. The File System wizard appears.



7. Enter a volume name or accept the default name, then click **Next**.



8. Select **Yes, create a file system using all RAID3 LUNs**, then click **Finish**.

9. Click **OK**, in the warning message box. The Progress Report window appears showing the create file system task status.

10. Upon 100% completion, click **Close** in Progress Report window.
11. When the reboot message appears, click **OK**, then restart the Windows NT operating system on the Profile XP Platform.
12. Continue with the next procedure in this guide.



6 Set up PFR 600 network settings

This procedure explains how to modify factory default PFR600 network and SNMP settings for monitoring with NetCentral Lite or NetCentral Manager.

PFR 600 network is set up using a console program accessed through the serial port on the RAID Controller and Hyperterminal, running on the Profile XP system. Both RAID controllers must be configured if the optional RAID Controller B is installed. Refer to the *Profile XP Service Manual* for information on using NetCentral Lite.

Modifying network and SNMP settings on RAID Controller A

This procedure assumes the PFR 600 is cabled and powered-up as shown on pages 10 and 11.

To configure PFR600 network and SNMP settings:

1. Start a Hyperterminal session using the following steps:
 - a. Click **Start | Programs | Accessories | Hyperterminal | HyperTerminal**.
 - b. In the Connection Description dialog box, type `pfr`, then click **OK**.
 - c. In the Connect To dialog box, click **OK**.
 - d. In the Com1 Properties dialog box, click **Restore Defaults**, then click **OK**. (9600, 8 bits, parity none, stop bit 1, flow control none) A flashing cursor appears in the terminal window.
2. Use the instructions in the following table to modify RAID controller settings.

>>> **CAUTION:** Use only the PFR600 commands specified in this procedure. Modifying some system parameters may render your RAID chassis inoperable.

Instructions	Text entered and displayed in terminal window
<p>Press Enter to receive the command prompt, then type <code>reboot</code>, and press Enter.</p> <p>NOTE: If you fail to receive the command prompt, check cabling and verify Hyper Terminal setup. Try cycling the power on the RAID Controller chassis. You can leave the Expansion chassis on. The boot screen should appear.</p>	<pre>Ciprico# reboot</pre>



Instructions	Text entered and displayed in terminal window
<p>The boot screen appears. After default settings are displayed, press any key within 10 sec, otherwise, the RAID controller will initialize and display a command prompt.</p> <p>NOTE: If you miss the 10 second window, type reboot again when the command prompt appears, then press Enter, or try cycling the power on the RAID Controller chassis. You can leave the Expansion chassis on. The boot screen should appear.</p>	<pre>Rebooting now - this will kill this shell. Ciprico Web Manager Copyright Ciprico Inc. 2000 ----- NETWORK INTERFACE PARAMETERS: IP address on LAN is 192.168.0.11 LAN interface's subnet mask is 255.255.255.0 COMMUNICATION PARAMETERS: Serial channels will use a baud rate of 9600 HARDWARE PARAMETERS: This board's MAC Address is 0:20:46:11:14:23 APPLICATION PARAMETERS: Boot Ciprico Network Server Mail and SNMP notification will occur for Hardware changes, Warnings, and Critical events. SNMP TRAP CONFIGURATION: TRAP COMMUNITY NAME 'public' TRAP MANAGER #1 IP Address 192.168.0.10 After board is reset, start-up code will wait 10 seconds ----- To change any of this, press any key within 10 seconds.</pre>
<p>Press Enter to modify settings.</p>	<pre>(M)odify any of this or (C)ontinue? [M]</pre>
<p>Press Enter to configure a LAN interface.</p>	<pre>For each of the following questions, you can press <Return> to select the value shown in braces, or you can enter a new value. NETWORK INTERFACE PARAMETERS: Do you want a LAN interface? [Y]</pre>
<p>Type the IP address for this RAID Controller, then press Enter.</p> <p>NOTE: RAID Controller A and the optional RAID Controller B must use different IP addresses. Also, the subnet must match the Profile XP subnet unless a gateway is used.</p>	<pre>IP address(0.0.0.0 = RARP, 255.255.255.255 = DHCP/BOOTP)? [192.168.0.11] <enter your IP address></pre>
<p>Type the subnet mask value, then press Enter.</p>	<pre>Subnet mask for LAN (0 for none)? [255.255.255.0] 255.255.255.0</pre>
<p>If a gateway is used, type y, then press Enter, to provide a Gateway address, otherwise, just press Enter to continue.</p>	<pre>Should there be a default gateway for packet routing? [N]</pre>
<p>Press Enter to accept defaults.</p>	<pre>COMMUNICATION PARAMETERS: Baud rate for serial channels [9600]</pre>

Instructions	Text entered and displayed in terminal window
Press Enter to accept defaults.	APPLICATION PARAMETERS: Boot Choices: [1]Factory Flash Loader or [2]Ciprico Network Server Your Choice (1 or 2)? [2]
Type 1, then press Enter . [NOTE: The default value may appear different than shown here.]	Mail and SNMP notification level: 1 (most verbose) through 5 (off)? [2] 1
Press Enter .	Modify User Password? [N]
Type y, then press Enter .	Modify SNMP Trap Information? [N] y
Type public, then press Enter .	Trap Community Name? [] public
Type the Profile XP IP address, then press Enter. Add additional trap destinations, if needed (up to four total), or press Enter a number of times to advance to the next step—Modify SNMP MIB Communities. NOTE: You can enter the factory default IP address for your Profile XP system (192.168.0.10) unless you are modifying it for an existing network.	You may enter up to 4 Hosts to receive Traps sent by this device Enter Trap Manager #1 IP Address? [0.0.0.0] 192.168.0.10 Enter Trap Manager #2 IP Address? [0.0.0.0] Enter Trap Manager #3 IP Address? [0.0.0.0] Enter Trap Manager #4 IP Address? [0.0.0.0]
Press Enter .	Modify SNMP MIB Communities? [N]
Press Enter .	Modify Mail parameters? [N]
Press Enter to accept defaults. NOTE: Default value may appear different than shown here.	How long (in seconds) should CPU delay before starting up? [10]
RAID controller configuration is displayed showing your settings.	NETWORK INTERFACE PARAMETERS: IP address on LAN is 192.168.0.11 LAN interface's subnet mask is 255.255.255.0 COMMUNICATION PARAMETERS: Serial channels will use a baud rate of 9600 HARDWARE PARAMETERS: This board's MAC Address is 0:20:46:11:14:23 APPLICATION PARAMETERS: Boot Ciprico Network Server Mail and SNMP notification will occur for Hardware changes, Warnings, and Critical events. SNMP TRAP CONFIGURATION: TRAP COMMUNITY NAME 'public' TRAP MANAGER #1 IP Address 192.168.0.10 After board is reset, start-up code will wait 10 seconds



Instructions	Text entered and displayed in terminal window
Type c, then press Enter .	(M)odify any of this or (C)ontinue? [M] c
Wait for non-volatile storage update.	Updating non-volatile storage. This may take a while...Done
<p>Wait for initialization.</p> <p>NOTE: If the network cable is not connected, the console stops at the message “Waiting for Ethernet Link...”. If you cannot connect network cabling at this time, cycle the power on the PFR500 Controller chassis, then continue with this procedure.</p>	<p>Initializing Enclosure Services Interface.....Done</p>
<p>Wait for reboot, plus 10 seconds, to allow the Enclosure Services Interface initialization to start.</p>	<p>Rebooting now for new system parameters to take effect</p> <p>Ciprico Web Manager Copyright Ciprico Inc. 2000</p> <p>-----</p> <p>NETWORK INTERFACE PARAMETERS: IP address on LAN is 192.168.0.11 LAN interface's subnet mask is 255.255.255.0</p> <p>COMMUNICATION PARAMETERS: Serial channels will use a baud rate of 9600</p> <p>HARDWARE PARAMETERS: This board's MAC Address is 0:20:46:11:15:81</p> <p>APPLICATION PARAMETERS: Boot Ciprico Network Server Mail and SNMP notification will occur for Warnings and Critical events.</p> <p>SNMP TRAP CONFIGURATION: TRAP COMMUNITY NAME 'public' TRAP MANAGER #1 IP Address 192.168.0.10 After board is reset, start-up code will wait 10 seconds</p> <p>-----</p> <p>To change any of this, press any key within 10 seconds</p>

Instructions	Text entered and displayed in terminal window
<p>Wait for initialization, then proceed to step 3 of this procedure.</p> <p>NOTE: If the network cable is not connected, the console stops at the message “Waiting for Ethernet Link...”. If you cannot connect network cabling at this time, cycle the power on the RAID Controller chassis, then proceed to step 3 following this table. You will not be able to monitor your RAID chassis with NetCentral, or update its firmware.</p>	<pre> Initializing Enclosure Services Interface.....Done Started Monitor Started SNMP Agent Started FTP Flash Loader Started Web Server Started Telnet Server ***** * Ciprico Web Manager Network Server * * Revision: 2.3.7 * * Compiled: 01/23/02 00:28:24 CST * ***** Ciprico# </pre>

3. If the optional RAID Controller B is installed, perform the following steps, otherwise, proceed to step 4.
 - a. Move the standard serial cable connector to the daisy chain cable connected to RAID Controller B.
 - b. Repeat the instructions for modifying network and SNMP settings in step 2 of this procedure.
4. Exit Hyperterminal.

Now that the RAID controller network and SNMP settings are configured, you can proceed to “Start NetCentral Lite monitoring software” on page 29.



7

Set up PFR 700 network settings

This procedure explains how to modify factory default PFR 700 network and SNMP settings for monitoring with NetCentral Lite or NetCentral Manager.

Refer to the *Profile XP Service Manual* for information on using NetCentral Lite.

Configuring PFR 700 network and SNMP settings

Network and SNMP settings are set and stored on the LAN card. Therefore the PFR 700 RAID chassis, including its one or two RAID controllers, is a single networked device. This is different than other PFR series RAID devices in which each controller is a networked device.

You can use the GVG Disk Utility to configure the following settings for the PFR 700 RAID chassis:

- IP address
- Subnet mask
- Gateway Address
- SNMP trap destinations

To configure these settings, do the following:

1. In the GVG Disk Utility, right-click the icon for a PFR 700 controller and select **Set Network Properties**. The Controller Network Settings dialog box opens.



Controller Network Settings

Network Configuration

IP Address: 10 . 16 . 38 . 157

Subnet Mask: 255 . 255 . 252 . 0

Gateway Address: 10 . 16 . 36 . 1

SNMP Configuration

Trap Address 1: 10 . 16 . 38 . 143

Trap Address 2: 10 . 16 . 38 . 51

Trap Address 3: 0 . 0 . 0 . 0

OK Cancel

2. Enter network settings for the RAID chassis.
3. For each SNMP manager to which you want to send SNMP trap messages, enter the IP address of the PC hosting the manager. If you are monitoring the PFR 700/E with your NetCentral Lite on your Profile XP Media Platform, enter its IP address. If you are monitoring the PFR 700/E with NetCentral, enter the IP address of the NetCentral server (NetCentral 4.x and higher) or NetCentral monitoring station (NetCentral 3.x and lower).
4. Click **OK** to save settings and close.

Now that the RAID controller network and SNMP settings are configured, you can proceed to “Start NetCentral Lite monitoring software” on page 29.

8 Start NetCentral Lite monitoring software

NetCentral Lite monitoring software is installed and preconfigured to run on your Profile XP Media Platform to monitor system status. Using NetCentral Lite, you can check status information for all major subsystems in the Profile XP Media Platform and receive alert messages when a subsystem is operating at reduced capacity or is no longer functioning.

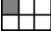

Since the Profile XP network and SNMP settings are preconfigured at the factory, you can start NetCentral now to begin monitoring your Profile XP's subsystems.

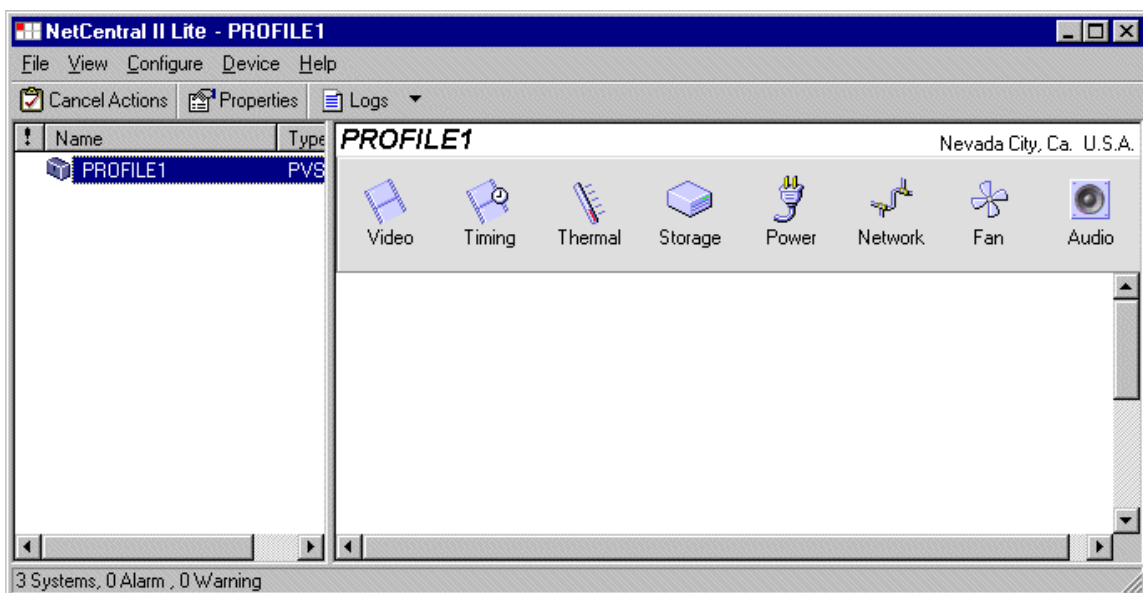
NOTE: *If you are connecting your Profile XP system to a network, and need to reconfigure network settings, you must refer to the NetCentral Lite setup instructions in the Profile XP Service Manual to reconfigure SNMP settings.*

Starting NetCentral Lite on the Profile XP system

Use the following steps to start NetCentral Lite and begin monitoring the Profile XP Media Platform.

To start NetCentral Lite:

1. Click **Start | Programs | NetCentral | NetCentral Lite**. After NetCentral Lite starts, the NetCentral icon  is displayed in the system tray of your Windows task bar. The moving block in the icon provides visual confirmation that the system is operational, using these colors to indicate device status level:
Green = Normal; Red = Warning; Red = Alarm/Dead or Off-line
2. Double click the NetCentral icon  in the system tray to display the NetCentral window. Refer to the *Profile XP Service Manual* for information on using NetCentral Lite monitoring software.





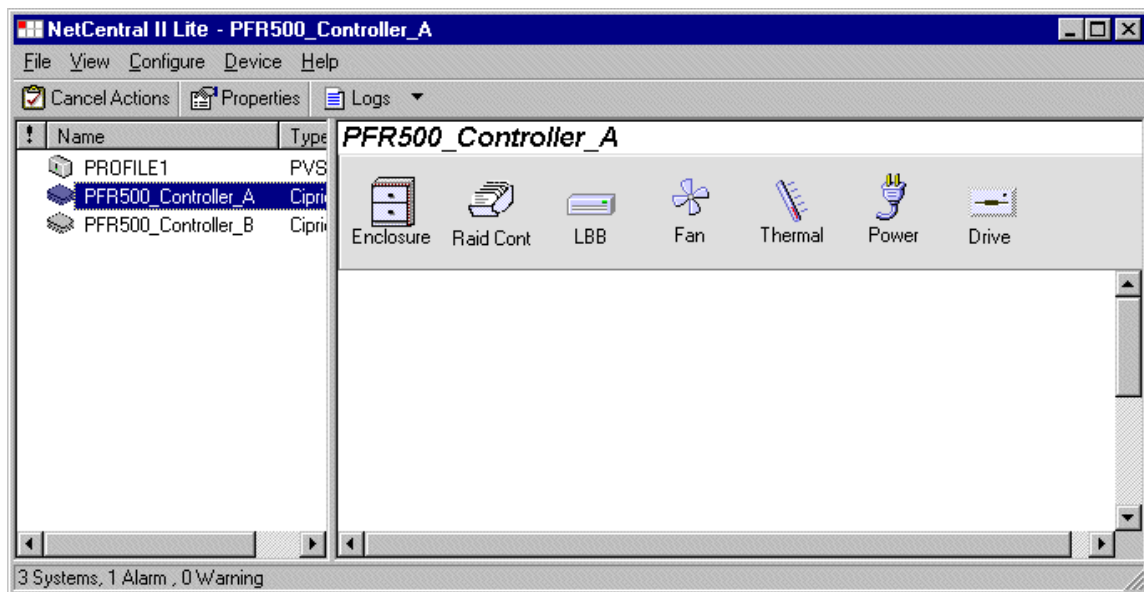
Adding the PFR 600 or PFR700 RAID storage device

This procedure explains how to add the PFR 600 or PFR 700 Fibre Channel RAID Chassis to the NetCentral device list. This step is required in order to monitor the RAID chassis.

To add the PFR 600 or PFR 700 RAID storage chassis to the device list:

1. In the NetCentral main menu, click **File | Add Device**.
2. In the Add Device dialog box, enter the IP address or host name for RAID Controller A, then click **OK**. You can use the following default address if you have not modified network settings: controller A = 192.168.0.11.

NetCentral contacts RAID Controller A, and adds it to the device list. The RAID Controller is labeled using the controller IP address or the host name if network name resolution is setup for the Profile XP system. (Refer to “Setting up a simple network” in the *Profile XP System Guide*.)



3. Repeat step 1 and step 2 for RAID Controller B, if installed. You can use the following default address if you have not modified network settings: controller B = 192.168.0.12.
4. Refer to the *Profile XP Service Manual* for information on using NetCentral Lite monitoring software.

9 Select audio I/O format

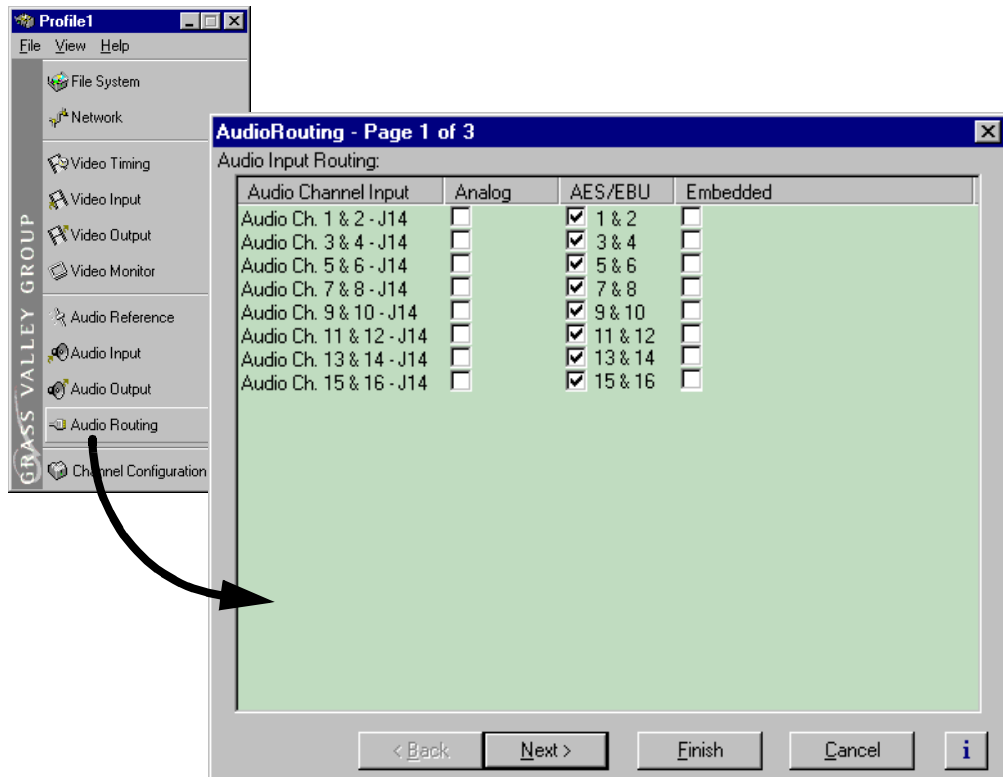
You must verify the audio I/O format for the audio channels assigned to the default video channels and change it if required.

The Profile XP Media Platform supports three audio I/O formats: AES/EBU, embedded audio, and analog audio formats. An interface chassis is required for analog audio and AES/EBU digital audio. If you are using only embedded audio, no interface chassis is required.

Select audio input format

To select audio input format:

1. Click **Audio Routing** in the Configuration Manager window. The Audio Input Routing dialog box appears.

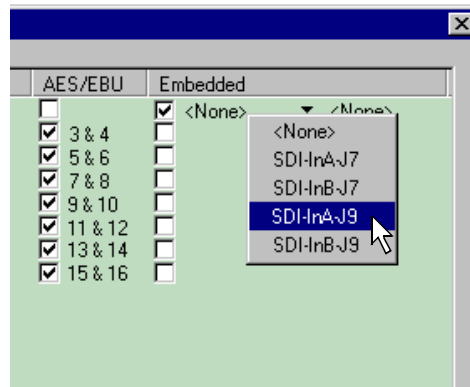


2. Select the audio input format for each audio channel pair.



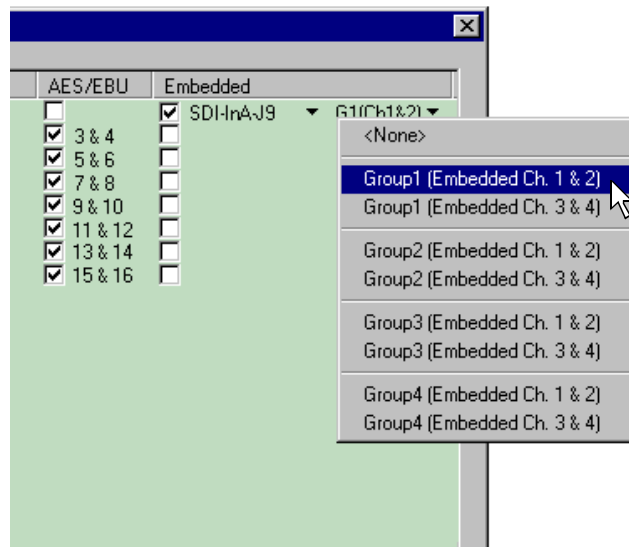
3. If you selected embedded audio format, perform the following steps for each audio channel input pair requiring embedded audio:
 - a. Click the left-hand drop-down list arrow in the Embedded column for the channel pair you want to configure, and select a video input as shown.

NOTE: With one audio board, only the first 4 video inputs are selectable.



- b. Click the right-hand drop-down list arrow in the Embedded column for the channel pair you want to configure, and select an audio group and channel pair as shown.

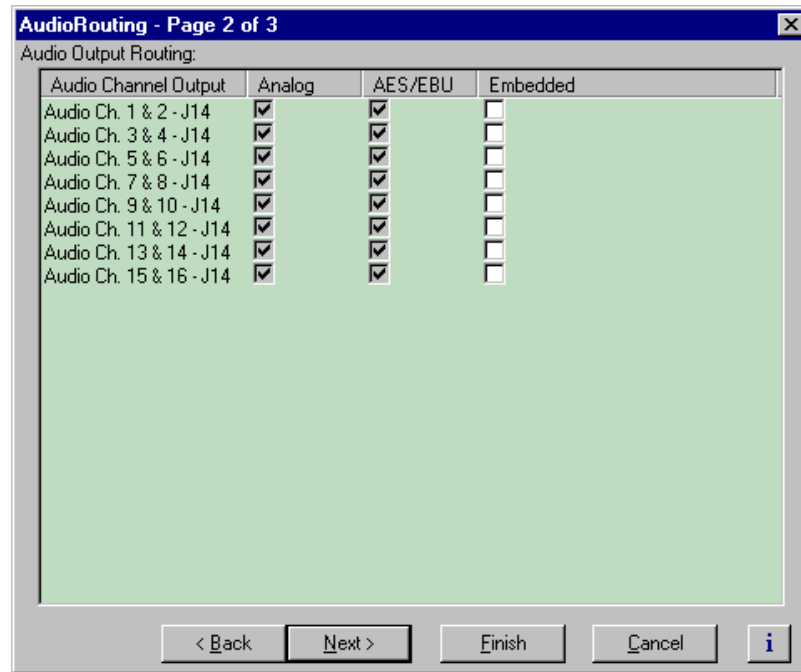
NOTE: Up to two audio groups (8 audio channels) can be extracted from a single video input.



Select audio output format

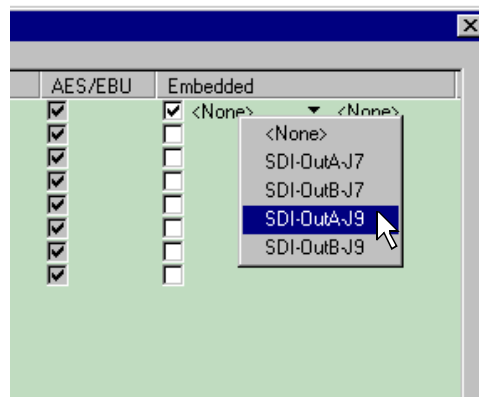
To select audio output format:

1. Click **Next** to navigate to Page 2 of the Audio Output Routing dialog box as shown.



2. For AES/EBU or Analog audio, no selection is required. These audio formats are selected automatically when the system sees the audio interface is attached.
3. Select embedded audio output using the following steps:
 - a. For embedded audio, select the **Embedded** check box for each audio channel pair that require embedded audio.
 - b. Click the left-hand drop-down list arrow in the **Embedded** column for the channel pair you want to configure, and select a video output as shown.

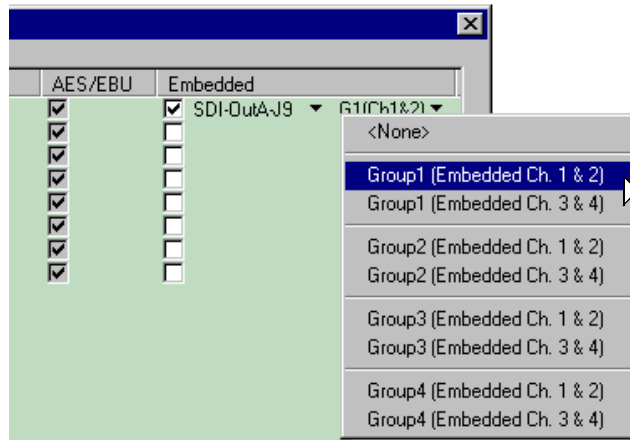
NOTE: With one audio board, only the first 4 video outputs are selectable.





- c. Click the right-hand drop-down list arrow in the **Embedded** column for the channel pair you want to configure, and select an audio group and channel pair as shown.

NOTE: Up to two audio groups (8 audio channels) can be embedded on a single video output. Embedded audio can only be allocated by groups of 4 channels. In some cases, with two audio boards installed, you may have to select embedded audio outputs first, then select the audio inputs for each audio board to be able to select all the desired embedded outputs.



4. Click **Finish** to save your settings.
5. Continue with the next procedure in this guide to test your system setup.

10 Test your system setup using VdrPanel

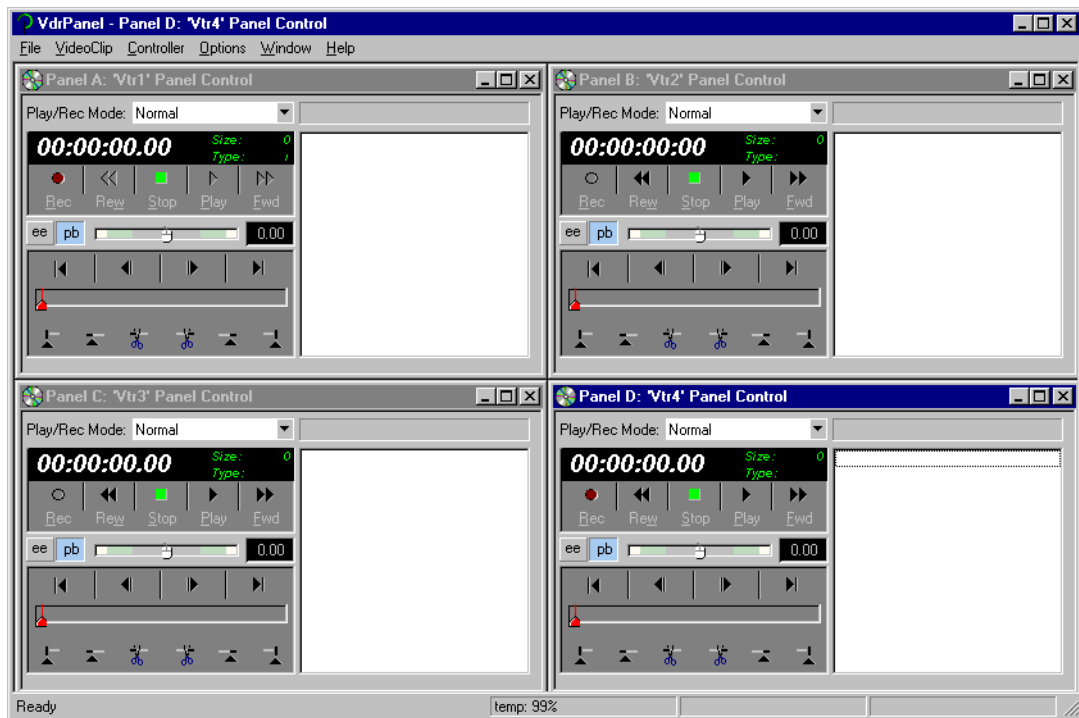
In this step, you will use VdrPanel in local control to test the record and play channels. This procedure assumes you have video and audio signals connected to the inputs of all record channels and have a way of monitoring the video, audio, and timecode outputs.

In systems without record channels you must use the video network to transfer a clip from another Profile. (See “Using Media Manager” in the 23 February 2004).

To test channels using VdrPanel:

1. Start VdrPanel using the desktop shortcut or by selecting **Start | Programs | Profile Applications | VdrPanel**. The VdrPanel window appears.

NOTE: The first time VdrPanel runs, a panel opens for each default record and play channel. The number of default channels depends on your model. Refer to “Default Video Connections” on page 5.



2. Record a short clip, a few seconds in duration as follows:
 - a. Click the **Record** button in the panel for a record channel. Recording starts. The **Size** display indicates compressed frame sizes during record as timecode advances in the Timecode display.
 - b. Click the **Stop** button to end the recording. Notice the clip name in the clip list is #1.



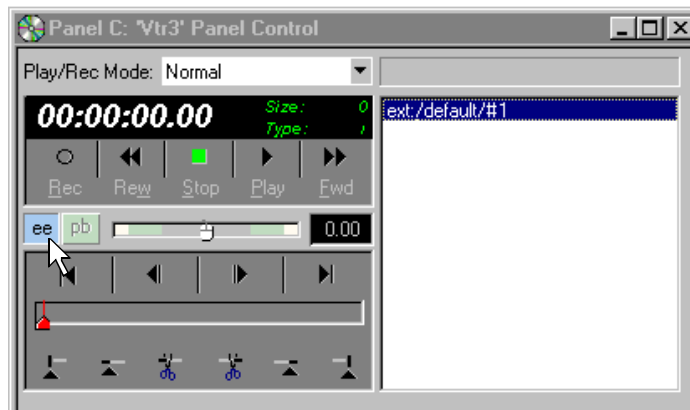
3. Load and play a clip on each Play Channel as follows:
 - a. Click anywhere in the panel for a Play Channel.
 - b. Select **VideoClip | Load Clip** to open the Load Clip dialog box.
 - c. Select clip #1 in the clip list, then click **OK** to load the clip.
 - d. Click **Play** and verify that video, audio are present at the channel outputs. If you have a problem, refer to the Chapter 10, “Solving Common Setup Problems” in the *Profile XP System Guide*.
4. Use steps 2 and 3 to test all record and play channels.
5. Continue with the next procedure in this guide to adjust video timing.

11 Adjust video output timing

All playback channels are zero timed by default, however, video output timing adjustment is provided to meet downstream timing requirements if needed. In this procedure you will load a clip and verify the output timing for each play channel.

To adjust video output timing:

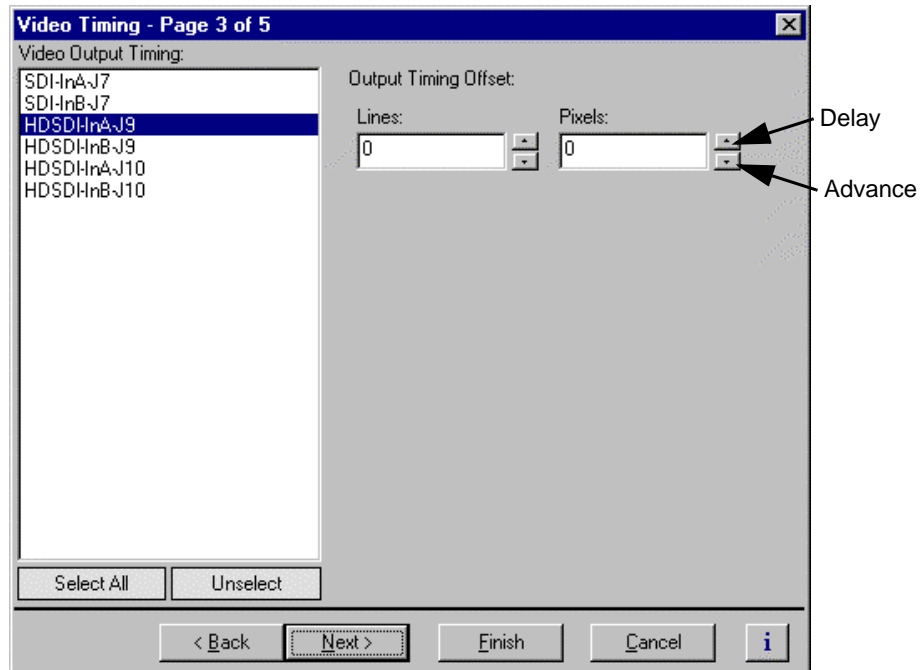
1. In VdrPanel, load and playback a clip as follows:
 - a. Click anywhere in the panel for the first Play Channel.
 - b. Select **Video Clip | Load Clip** to open the Load Clip dialog box.
 - c. Select a clip to load, then click **OK**.



- d. Click the **ee** (**ee**) button in the panel.
 - e. Repeat step a through step d for all Play channels.



2. Select **Video Timing** in the Configuration Manager window. Page 1 of the Video Timing dialog box appears.
3. Click **Next** to navigate to page 2 of 3.



4. Select the video output from the list, then adjust the video output timing with the timing controls.

NOTE: Use the **Select All** button to enter the same offset for all video outputs.

5. Repeat step 4 for each video output.
6. Click **Finish** to save your settings.
7. Continue with the next procedure in this guide to select RS-422 control protocol.

12

Select an RS-422 control protocol

PVS 1100 remote control protocols are shown in the table. Follow the procedure indicated for the remote control protocol you want to use. If you are not using RS-422 control, you can skip this step

Protocols Available	Application to Use	Procedure to Follow
VDCP Control Odetics Protocol BVW Protocol	VdrPanel	Setting up RS-422 remote control in VdrPanel
Profile Protocol	Prolink	Setting up RS-422 remote control using Prolink (Profile protocol)
RS-422 or Ethernet Network	AMP ^a application	Setting up AMP remote control

^a. Advanced Media Protocol (AMP) - AMP is an extension of the Odetics protocol.

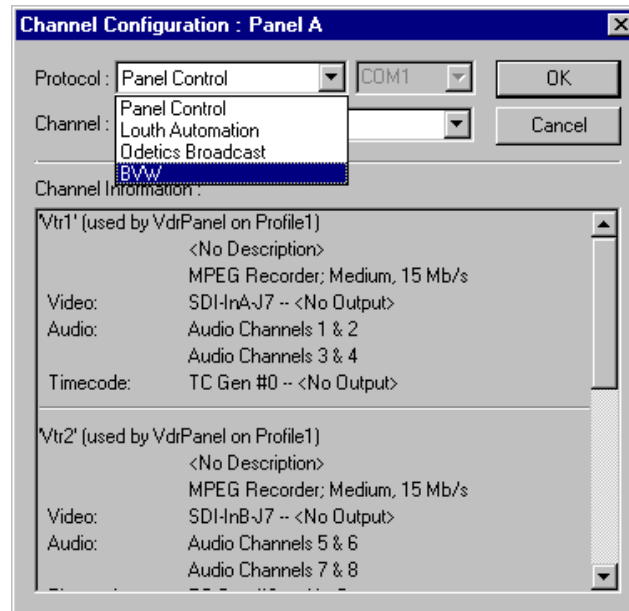
NOTE: Some third-party applications also support the General Purpose Interface (GPI). Refer to your vendor's documentation for instructions on using GPI triggers.



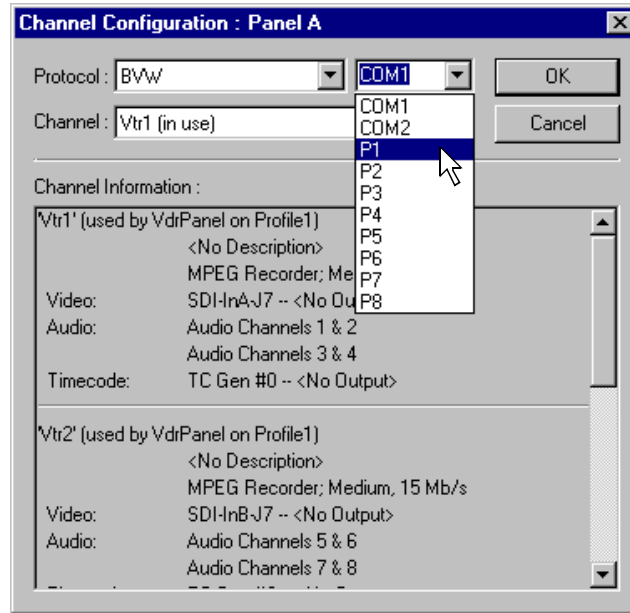
Setting up RS-422 remote control in VdrPanel

To setup a VdrPanel for remote control:

1. If VdrPanel is not already running, start it using the desktop shortcut or by selecting **Start | Programs | Profile Applications | VdrPanel**. The VdrPanel window appears.
2. In VdrPanel, click in the panel you want to set up for remote control.
3. Choose **Controller | Configure** to open the Channel Configuration dialog box, then select a control protocol using the **Protocol** drop-down list as shown.



4. Select a serial port using the port select drop-down list as shown. COM1 and COM2 are RS-232 ports on the PVS 1100 rear panel. P1 through P8 are RS-422 ports on the I/O Panel.



5. Click **OK** in the Channel Configuration dialog box.
6. Repeat step 2 through step 5 for the remaining panels.
7. Test the system using your automation controller.

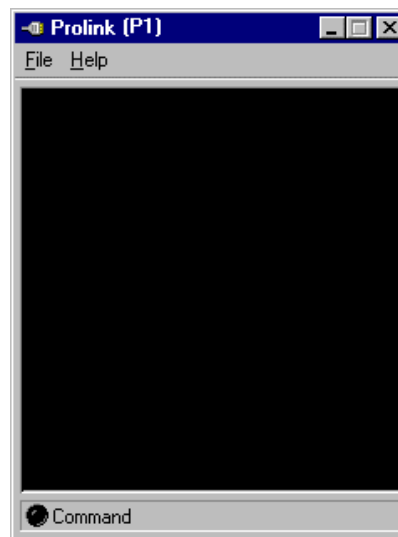
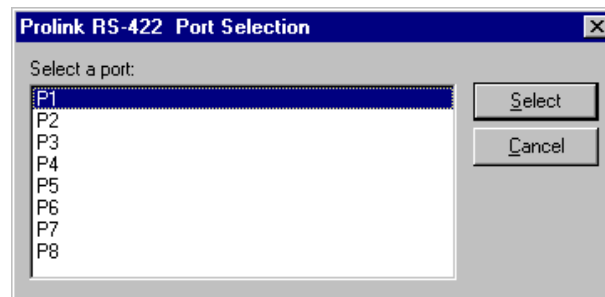
This completes all the procedures in this *Installation Guide*. Refer to the *Profile XP System Guide* for more information on customizing settings for your application.



Setting up RS-422 remote control using Prolink (Profile protocol)

Use this procedure to start and set up Prolink to control the PVS 1100 using Profile protocol.

1. Close VdrPanel if you used it earlier to test your record and play channels.
2. Open Prolink using the shortcut on the desktop or by selecting **Start | Programs | Profile Applications | Prolink**.
3. Select an RS-422 serial port, then click **Select**. The Prolink window appears.



4. Test the PVS 1100 system using your controller.
5. Repeat steps 2-4 for the number of control ports you need to control the PVS 1100 using Profile protocol.

NOTE: For more information on the Prolink user interface see Chapter 8, “Controlling the Profile XP Remotely” in the Profile XP System Guide.

This completes all the procedures in this *Installation Guide*. Refer to the *Profile XP System Guide* for more information on customizing settings for your application.

Setting up AMP remote control

You can use Advanced Media Protocol (AMP) to control a Profile XP system channel. This protocol is an extension of the Odetics protocol and is supported through the Profile XP AMP application. External control devices can be connected via RS-422 serial connectors, or an Ethernet network connection.

The AMP application acquires a single channel (Player, Recorder, or Player/Recorder) at a time.

The AMP application interface runs in the following modes:

- Local control mode — The Profile XP channel can be controlled by either the local AMP application or by third party applications such as a hardware controller or a software application.
- Status mode — The Profile XP channel is controlled by a remote application and the local AMP application only monitors activities on the channel.

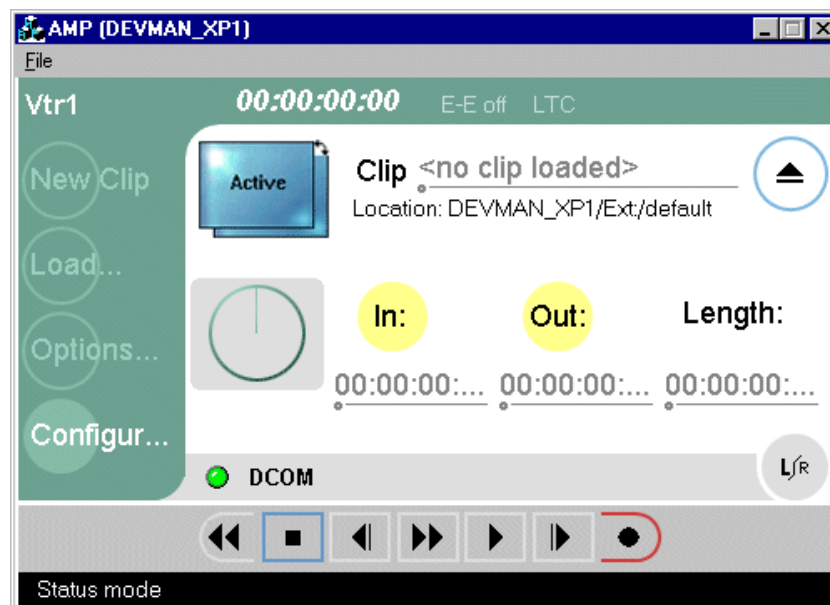
When you are using a remote application, AMP protocol supports the use of a two-head model in that two clips are loaded simultaneously, as follows:

- Active clip — The AMP “preset id” is considered the active clip that controls channel resources.
- Preview clip — The AMP “preview preset id” is considered the preview clip. Generally the preview clip begins playing after the active clip completes, at which point the preview clip becomes the active clip.

Configuring AMP protocol control

To configure a Profile XP channel for control by the AMP protocol, do the following:

1. Make sure that the channel you intend to control by the AMP protocol is not currently allocated to an application.
2. Open *C:/profile/ampclient.exe*. The AMP application opens.

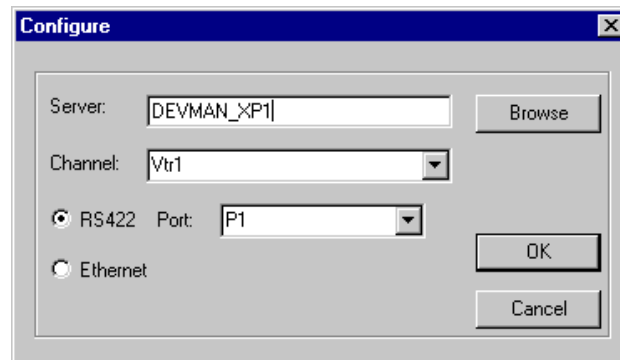




3. Click the **Configure** button,

- or -

On the **File** menu, click **Configure**. The Configure dialog box opens.



4. On the **Channel** drop-down list, select the local Profile XP channel to be controlled by AMP protocol.

5. Select either **RS422** or **Ethernet** for the type of communication you are using for AMP protocol. If you select RS422, also select the **Port** you are using.

6. Click **OK** to save changes and close. If the selected channel is currently allocated to another application, a message informs you that it is not available.

After a pause (indicated by “Connecting...Please wait” in the status bar) the selected channel is allocated to the AMP protocol. The channel remains allocated as long as the AMP application remains open.

You can now control the Profile XP channel with the AMP protocol using a remote AMP application or device. To control the channel with the AMP protocol using the local AMP application, see “Using the AMP application for local control” in the *Profile XP System Guide*.

Grass Valley Product Support

To get technical assistance, check on the status of problems, or report new problems, contact Grass Valley Product Support via e-mail, the Web, or by phone or fax.

Web Technical Support

To access support information on the Web, visit the product support Web page on the Grass Valley Web site. You can download software or find solutions to problems by searching our Frequently Asked Questions (FAQ) database.

World Wide Web: <http://www.thomsongrassvalley.com/support/>

Technical Support E-mail Address: gvgtechsupport@thomson.net

Phone Support

Use the following information to contact product support by phone during business hours. Afterhours phone support is available for warranty and contract customers.

United States	(800) 547-8949 (Toll Free)	France	+33 (1) 34 20 77 77
Latin America	(800) 547-8949 (Toll Free)	Germany	+49 6155 870 606
Eastern Europe	+49 6155 870 606	Greece	+33 (1) 34 20 77 77
Southern Europe	+33 (1) 34 20 77 77	Hong Kong	+852 2531 3058
Middle East	+33 (1) 34 20 77 77	Italy	+39 06 8720351
Australia	+61 3 9721 3737	Netherlands	+31 35 6238421
Belgium	+32 2 3349031	Poland	+49 6155 870 606
Brazil	+55 11 5509 3440	Russia	+49 6155 870 606
Canada	(800) 547-8949 (Toll Free)	Singapore	+656379 1390
China	+86 106615 9450	Spain	+ 34 91 512 03 50
Denmark	+45 45968800	Sweden	+46 87680705
Dubai	+ 971 4 299 64 40	Switzerland	+41 (1) 487 80 02
Finland	+35 9 68284600	UK	+44 870 903 2022

Authorized Support Representative

A local authorized support representative may be available in your country. To locate the support representative for your country, visit the product support Web page on the Grass Valley Web site.

Profile Users Group

You can connect with other Profile XP Media Platform users to ask questions or share advice, tips, and hints. Send e-mail to profile-users@thomson.net to join the community and benefit from the experience of others.

