



# InSync

PROFILE XP & OPEN SAN MIRRORING SOFTWARE

User Guide

SOFTWARE VERSION 3.0

071-8008-05  
JULY 2008

## Copyright

Copyright © 2008 Grass Valley, Inc. All rights reserved. Printed in the United States of America. Portions of software © 2000 – 2008, Microsoft Corporation. All rights reserved. This document may not be copied in whole or in part, or otherwise reproduced except as specifically permitted under U.S. copyright law, without the prior written consent of Grass Valley, Inc., P.O. Box 59900, Nevada City, California 95959-7900. This product may be covered by one or more U.S. and foreign patents.

## Disclaimer

Product options and specifications subject to change without notice. The information in this manual is furnished for informational use only, is subject to change without notice, and should not be construed as a commitment by Grass Valley, Inc. Grass Valley, Inc. assumes no responsibility or liability for any errors or inaccuracies that may appear in this publication.

## U.S. Government Restricted Rights Legend

Use, duplication, or disclosure by the United States Government is subject to restrictions as set forth in subparagraph (c)(1)(ii) of the Rights in Technical Data and Computer Software clause at DFARS 252.277-7013 or in subparagraph c(1) and (2) of the Commercial Computer Software Restricted Rights clause at FAR 52.227-19, as applicable. Manufacturer is Grass Valley, Inc., P.O. Box 59900, Nevada City, California 95959-7900 U.S.A.

## Trademarks and Logos

Grass Valley, K2, Aurora, Infinity, Turbo, M-Series, Profile, Profile XP, NetCentral, NewsBrowse, NewsEdit, NewsQ, NewsShare, NewsQ Pro, and Media Manager are either registered trademarks or trademarks of Grass Valley, Inc. in the United States and/or other countries. Grass Valley, Inc. products are covered by U.S. and foreign patents, issued and pending. Additional information regarding Grass Valley, Inc. trademarks and other proprietary rights may be found at [www.thomsongrassvalley.com](http://www.thomsongrassvalley.com).

Other trademarks and logos used in this document are either registered trademarks or trademarks of the manufacturers or vendors of the associated products, such as Microsoft® Windows® operating system, Windows Media® player, Internet Explorer® internet browser, and SQL Server™. QuickTime and the QuickTime logo are trademarks or registered trademarks of Apple Computer, Inc., used under license therefrom.



## Revision Status

Rev Date	Description
March 2000	Initial release of the Profile & Profile XP InSync User Guide, 071-8008-00
February 2001	Updated to include bi-directional mirroring mode, and to support v. 2.0. 071-8008-01.
April 2001	Updated to include PVS2000 in supported systems. 071-8008-02
September 2002	Updated to include Open SAN in supported systems. Part Number 071-8008-03.
February 2, 2004	Includes version 3 features. Part number 071-8008-04.
July 2, 2008	Updated synchronization rules. Part number 071-8008-05.

# Contents

---

Grass Valley Product Support .....	4
.....	6
Introducing InSync.....	7
Profile System requirements .....	7
Important information about using InSync.....	8
Installing InSync .....	8
Starting and stopping InSync .....	8
Setting master and slave Profile XPs .....	9
About synchronization .....	10
Configuring synchronization rules .....	11
Defining filters.....	14
Saving a configuration file .....	15
Loading a configuration file .....	16
Running synchronizations .....	16
Managing individual synchronization tasks .....	17
About task blocks .....	17
Re-arranging the order of synchronization tasks.....	17
Excluding synchronization tasks.....	17
Including synchronization tasks.....	18
Manually controlling deletions .....	18
Viewing synchronization history .....	19
Viewing the history log .....	19
Changing the slave Profile XP to be master.....	19

---

# Grass Valley Product Support

To get technical assistance, check on the status of a question, or to report new issue, contact Grass Valley Product Support via e-mail, the Web, or by phone or fax.

## Web Technical Support

To access support information on the Web, visit the product support Web page on the Grass Valley Web site. You can download software or find solutions to problems by searching our Frequently Asked Questions (FAQ) database.

**World Wide Web:** <http://www.thomsongrassvalley.com/support/>

**Technical Support E-mail Address:** [gvgtechsupport@thomson.net](mailto:gvgtechsupport@thomson.net).

## Phone Support

Use the following information to contact product support by phone during business hours. Afterhours phone support is available for warranty and contract customers.

International (France)	+800 80 80 20 20 +33 1 48 25 20 20	Italy	+39 02 24 13 16 01 +39 06 87 20 35 42
International (United States, Canada)	+1 800 547 8949 +1 530 478 4148	Belarus, Russia, Tadzikistan, Ukraine, Uzbekistan	+7 095 258 09 20 +33 (0) 2 334 90 30
Hong Kong, Taiwan, Korea, Macau	+852 2531 3058	Indian Subcontinent	+91 11 515 282 502 +91 11 515 282 504
Australia, New Zealand	+61 1300 721 495	Germany, Austria, Eastern Europe	+49 6150 104 444
Central, South America	+55 11 5509 3440	Near East, Africa	+33 1 48 25 20 20
China	+861 066 0159 450	Netherlands	+31 (0) 35 62 38 421
Belgium	+32 (0) 2 334 90 30	Northern Europe	+45 45 96 88 70
Japan	+81 3 5484 6868	Singapore	+65 6379 1313
Malaysia	+603 7805 3884	Spain	+41 487 80 02
Middle East	+971 4 299 64 40	UK, Ireland, Israel	+44 118 923 0499

## Authorized Support Representative

A local authorized support representative may be available in your country. To locate the support representative for your country, visit the product support Web page on the Grass Valley Web site.



## END-OF-LIFE PRODUCT RECYCLING NOTICE

Grass Valley's innovation and excellence in product design also extends to the programs we've established to manage the recycling of our products. Grass Valley has developed a comprehensive end-of-life product take back program for recycle or disposal of end-of-life products. Our program meets the requirements of the European Union's WEEE Directive, the United States Environmental Protection Agency, and U.S. state and local agencies.

Grass Valley's end-of-life product take back program assures proper disposal by use of Best Available Technology. This program accepts any Grass Valley branded equipment. Upon request, a Certificate of Recycling or a Certificate of Destruction, depending on the ultimate disposition of the product, can be sent to the requester.

Grass Valley will be responsible for all costs associated with recycling and disposal, including freight. However, you are responsible for the removal of the equipment from your facility and packing the equipment to make it ready for pickup.



For further information on the Grass Valley product take back system please contact Grass Valley at + 800 80 80 20 20 or +33 1 48 25 20 20 from most other countries. In the U.S. and Canada please call 800-547-8949 or 530-478-4148, and ask to be connected to the EH&S Department. Additional information concerning the program can be found at: [www.thomsongrassvalley.com/environment](http://www.thomsongrassvalley.com/environment)





# Using InSync

---

## Introducing InSync

Regardless of how reliable any broadcast device is, for mission-critical applications like broadcast, many facilities require full redundancy in their play-to-air servers. Disk mirroring, normally the responsibility of the controlling application, can add significantly to the complexity of the application. With InSync, mirroring is accomplished within the Profile system. InSync ensures that the contents of two systems are maintained as a mirrored pair. In the event of a failure the user routes control of replay function to the slave system, which InSync keeps synchronized with the master.

InSync can also provide bi-directional mirroring between two Profile systems. In this mode InSync allows each system to operate as a master system while serving as slave to the other.

## Profile System requirements

- InSync 3.0 is supported on these Profile systems:

System	Profile Software requirement
PVS1000	V5.2 or later
PVS1100	V5.2 or later
PVS2000	V5.2 or later
PVS3000	V5.4 or later

Not supported on PDR.

- Slave system must be configured to have the same number and type of active channels (channels used for record and play) as the master system.
- Fibre Channel or Ethernet video network installed and configured, such that Media Manager can make transfers between the Profile XPs. For information about configuring a network, see the *Profile XP System Guide*.
- InSync must be installed on the master Profile XP. It can also be installed on the slave Profile XP, but it should not be run simultaneously on both.
- PortServer must be running on the slave Profile XP. If you use bi-directional mirroring, PortServer must be running on both the master and slave Profile XPs. For information about starting or checking PortServer, see the *Profile XP System Guide*.
- In an Open SAN environment, you must use InSync on only one of the Profile XP Media Platforms attached to the shared storage.

**NOTE:** Grass Valley recommends that the storage capacity of the master and slave Profile XPs be the same. If the capacity of the slave unit is smaller, you must carefully manage the backup of material to avoid exceeding the storage capacity of the slave Profile XP. Exceeding the capacity of the slave Profile XP can result in the loss of backup material.

## Important information about using InSync

These are some constraints that you must be aware of when using InSync.

- Loop recording cannot be used with InSync.
- Clips of pre-defined length, such as those created by BVW Insert Edit, do not back up correctly with some versions of system software. To obtain system software that supports these operations, please contact Grass Valley Product Support (see [page 4](#)).
- When you are using the bi-directional mirroring mode you must not create, and you must not allow an automation program to create, a clip with the same name in the same directory **at the same time** on both units. Doing so creates contention that can result in the loss of one of the clips created.
- When you are using the bi-directional mirroring mode you must not edit the same clip in the same directory at the same time on both units. Doing so results in the loss of edits to the clip closed first.

## Installing InSync

The first step to installing InSync is to run the Setup program on the InSync CD-ROM. You must install InSync on one of the Profile XPs (the master) that you will use. You might want to install InSync on the slave Profile XP as well as the master. Having InSync installed and ready to run can be convenient if you need to operate the slave Profile XP as master and assign a new slave to maintain redundancy.

To install InSync you must be logged on as Administrator. For information about logging on as Administrator, see the *Profile XP System Guide*.

1. Insert the CD-ROM into the drive on the Profile XP you've chosen to be master. Choose **Start | Run** and browse for *Setup.exe* on the CD-ROM.
2. Follow on-screen instructions, clicking **Next** and **Finish**, to work through the installation program.

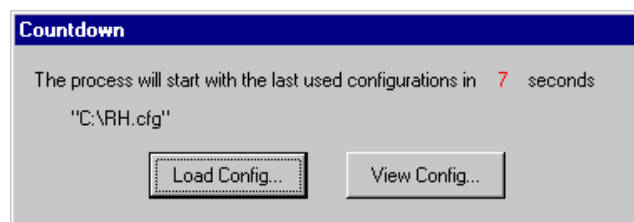
## Starting and stopping InSync

As InSync runs, it provides continuous, automatic mirroring of the master Profile XP on the slave Profile XP (unless you configure it to only run manually).

Start InSync by opening the following file:

`C:\profile\InSync.exe`

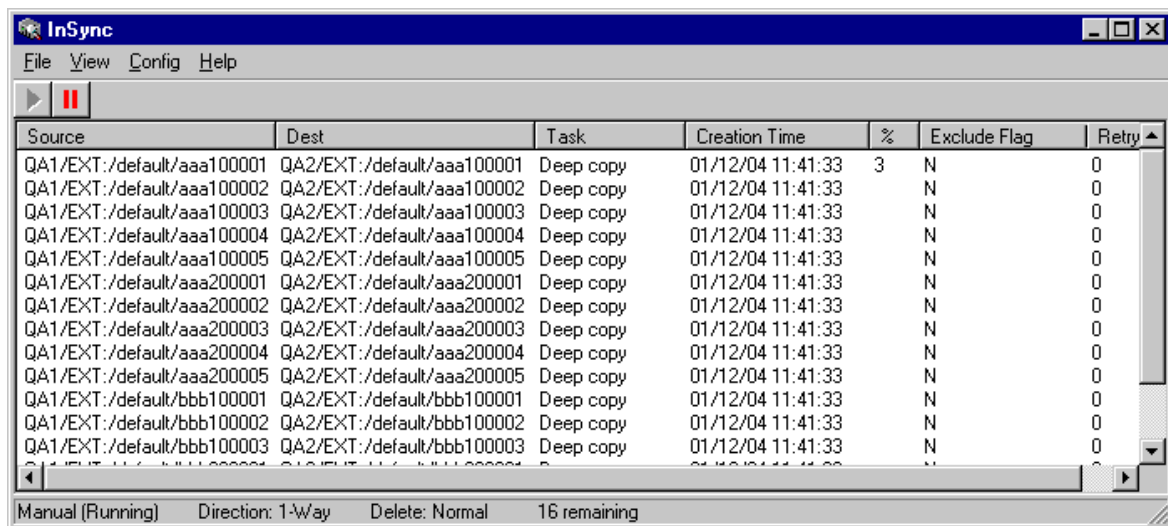
The Countdown dialog box appears.






This dialog box allows you to manually view and/or load a previously saved configuration file. If you do not manually view or load a configuration file before the countdown time period expires, InSync automatically loads the configuration file that you used last. The first time you start InSync, it loads a default configuration file, which is stored at *C:/InSync.cfg*.

There is a pause as the configuration file loads and InSync gets a list of clips from the XP. This pause can last for several seconds, depending on the number of clips on the XP. After the pause, the InSync main interface opens.



InSync opens with the Synchronization List area displayed. The status area, at the bottom of the InSync application window, displays a summary of the configuration currently loaded. Depending on the current configuration, synchronization might begin immediately, in which case a queue of synchronization tasks is displayed in the Synchronization List area. The progress of the task currently being processed is reported in the “%” column. When a task completes, it is purged from the queue.

To stop the current synchronization processes but leave the InSync application open, click the Pause button. 

To close the InSync application altogether, click **File | Exit**.

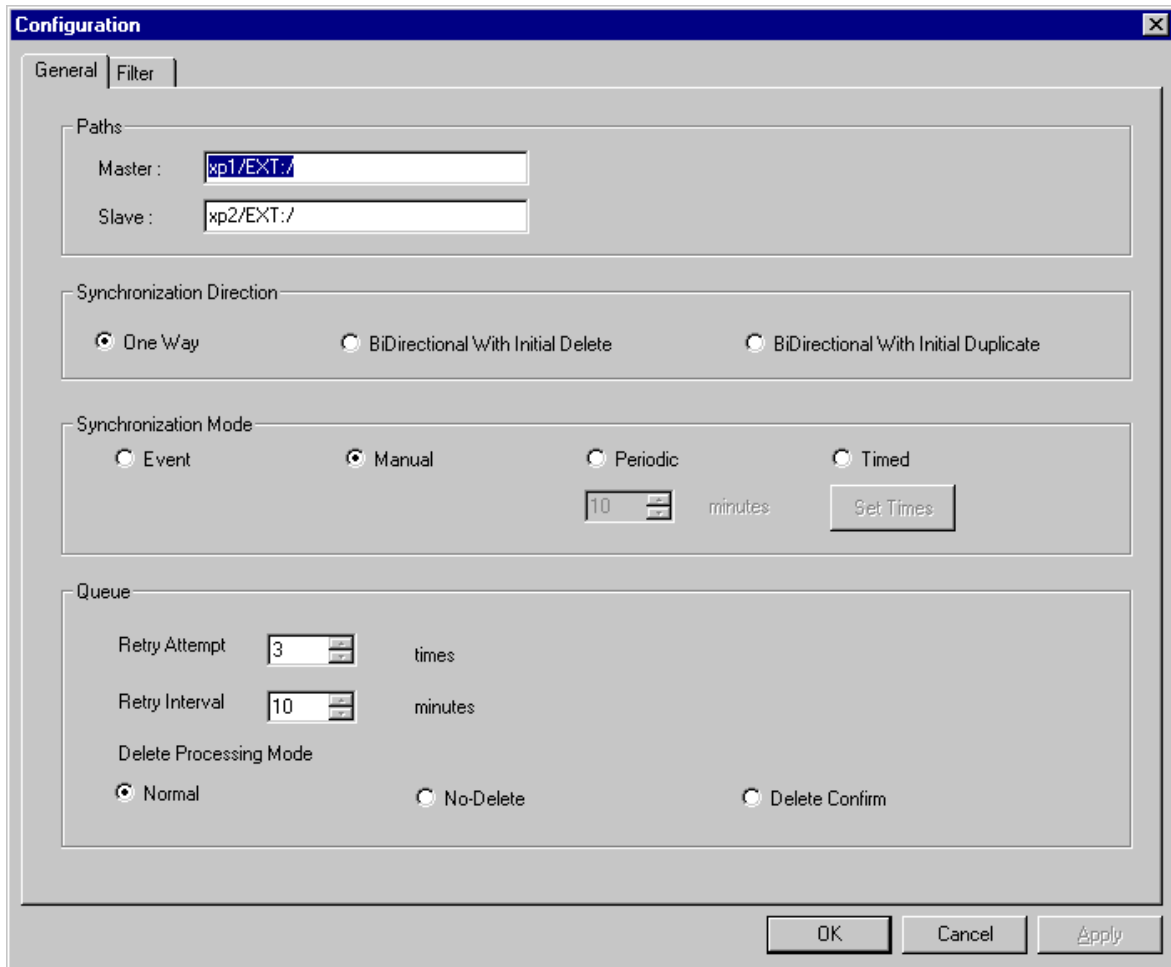
Continue with the following procedures to create, save, and use configurations to control InSync operation.

## Setting master and slave Profile XPs

You must define a master Profile XP and a slave Profile XP before any synchronization takes place. The Profile XPs must meet requirements as in [“Profile System requirements” on page 7](#). To test the connectivity required for InSync, use Media Manager and do a transfer between the Profile XPs.

To set master and slave Profile XPs, do the following:

1. Click **Config | View**. The Configuration dialog opens.



2. In the **Master** box, enter the machine name and path to the volume or bin that contains the clips to be backed up or mirrored. Use forward slashes.
3. In the **Slave** box, enter the machine name and path to the volume or bin to which clips are duplicated or mirrored. Use forward slashes.
4. When you are satisfied with your settings, click **Apply** to put settings into effect and leave the dialog open, or click **OK** to put settings into effect and close the dialog. When you click OK, the following occurs:
  - If the manual synchronization mode is currently selected, no synchronization processes begin.
  - If event, periodic, or timed synchronization mode is currently selected, a synchronization process might begin, depending on other settings. Refer to [“Running synchronizations”](#) on page 16.

## About synchronization

There are two phases of synchronization, as follows:

**Initial synchronization** — This runs only when a configuration is first loaded. This occurs when the InSync application is first started. It also occurs when a configuration is modified and you click the **OK** button.

In preparation for initial synchronization, InSync compares the clips on both the master and slave. The following conditions are detected:

- Clips present on one system but not on the other
- Clips present on both systems

Based on these conditions, InSync runs the initial synchronization. The synchronization behavior is determined by the currently loaded configuration.

**Ongoing synchronization** — This is the primary synchronization process that runs on a regular basis for as long as the InSync application remains open. It runs only after the initial synchronization is complete and is triggered according to the synchronization rules in the currently loaded configuration. In preparation for an ongoing synchronization process, InSync compares the clips on both the master and slave. The following conditions are detected:

- Clips present on one system but not on the other
- Clips present on both systems that are identical
- Clips present on both systems that are not identical. This includes clips that have been created (recorded or copied), modified (trimmed or renamed), or otherwise modified on one or both systems since the last ongoing synchronization occurred.

Based on these conditions, InSync runs synchronization processes according to the currently loaded configuration.

## Configuring synchronization rules

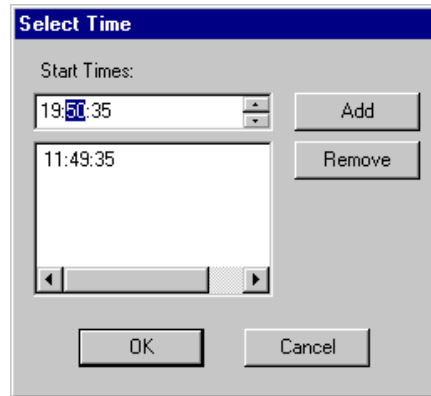
Configure the rules for InSync’s synchronization processes as follows:

1. Click **Config | View**. The Configuration dialog opens.
2. To control the behavior of initial synchronization, select one of the Synchronization Directions, as explained in the following table:

If you select this synchronization direction...	InSync initially does this to clips on the master but not on the slave...	And this to clips on the slave but not on the master...
One Way	Copy to slave	Nothing
BiDirectional With Initial Delete	Delete from master	Delete from slave
BiDirectional With Initial Duplicate	Copy to slave	Copy to master

3. Select one of the following Synchronization Modes:
  - **Event** — Synchronizes each time InSync detects a change in the master or slave file system, such as when a file is created (recorded or copied), modified (trimmed or renamed), or deleted.
  - **Manual** — Synchronizes only when you click the Start button.

- **Periodic** — When a synchronization completes, InSync waits for a specified time period, then automatically triggers another synchronization. Enter the time period that you want InSync to wait between synchronizations.
- **Timed** — Synchronizes at specified times. To specify times, click the **Set Times** button. The Select Time dialog box opens.



Enter a synchronization start time and click **Add**. Repeat until all your desired start times are added, then close the dialog box.

- To control the behavior of ongoing synchronization, select one of the Synchronization Directions, as explained in the following tables:
  - If Event synchronization mode is selected, settings behave as follows:

If you select this synchronization direction...	InSync does this to clips deleted from the slave only...	And this to clips deleted from the master only...	And does this to clips modified on the master only...	And this to clips modified on the slave only...
One Way	Nothing	Delete from slave	Copy to slave	Nothing
BiDirectional With Initial Delete	Delete from master	Delete from slave	Copy to slave	Copy to master
BiDirectional With Initial Duplicate	Delete from master	Delete from slave	Copy to slave	Copy to master

- If Manual, Period, or Time synchronization mode is selected, settings behave as follows:

If you select this synchronization direction...	InSync does this to clips deleted from the slave only...	And this to clips deleted from the master only...	And does this to clips modified on the master only...	And this to clips modified on the slave only...
One Way	Copy to slave	Nothing	Copy to slave	Nothing
BiDirectional With Initial Delete	Delete from master	Delete from slave	Copy to slave	Copy to master

If you select this synchronization direction...	InSync does this to clips deleted from the slave only...	And this to clips deleted from the master only...	And does this to clips modified on the master only...	And this to clips modified on the slave only...
BiDirectional With Initial Duplicate	Copy to slave	Nothing	Copy to slave	Copy to master

5. Configure values for Queue Retry as follows:

- **Retry Attempt** — When InSync cannot copy or delete a file, it can try the process again. Enter the number of times that you want InSync to try again.
- **Retry Interval** — Enter the number of minutes that you want InSync to wait between retries.

6. Select one of the following Delete Processing Modes:

- **Normal** — When a clip has a delete task listed in the synchronization queue, InSync processes the delete task and deletes the clip during the normal synchronization process. Each clip deletion is recorded in the History List.
- **No-Delete** — When a clip has a delete task listed in the synchronization queue, InSync does not process the delete task and the clip remains untouched. These unprocessed delete tasks remain in the synchronization list until a new synchronization runs. InSync does not retain any history or log entries of these unprocessed delete tasks.
- **Delete Confirm** — When a clip has a delete task listed in the synchronization queue, InSync does not process the delete task during the synchronization process. Instead, InSync places the clip’s delete task in the Confirm Delete List, so that you can later view the list and manually accept or reject each clip deletion. Refer to [“Managing individual synchronization tasks” on page 17](#).

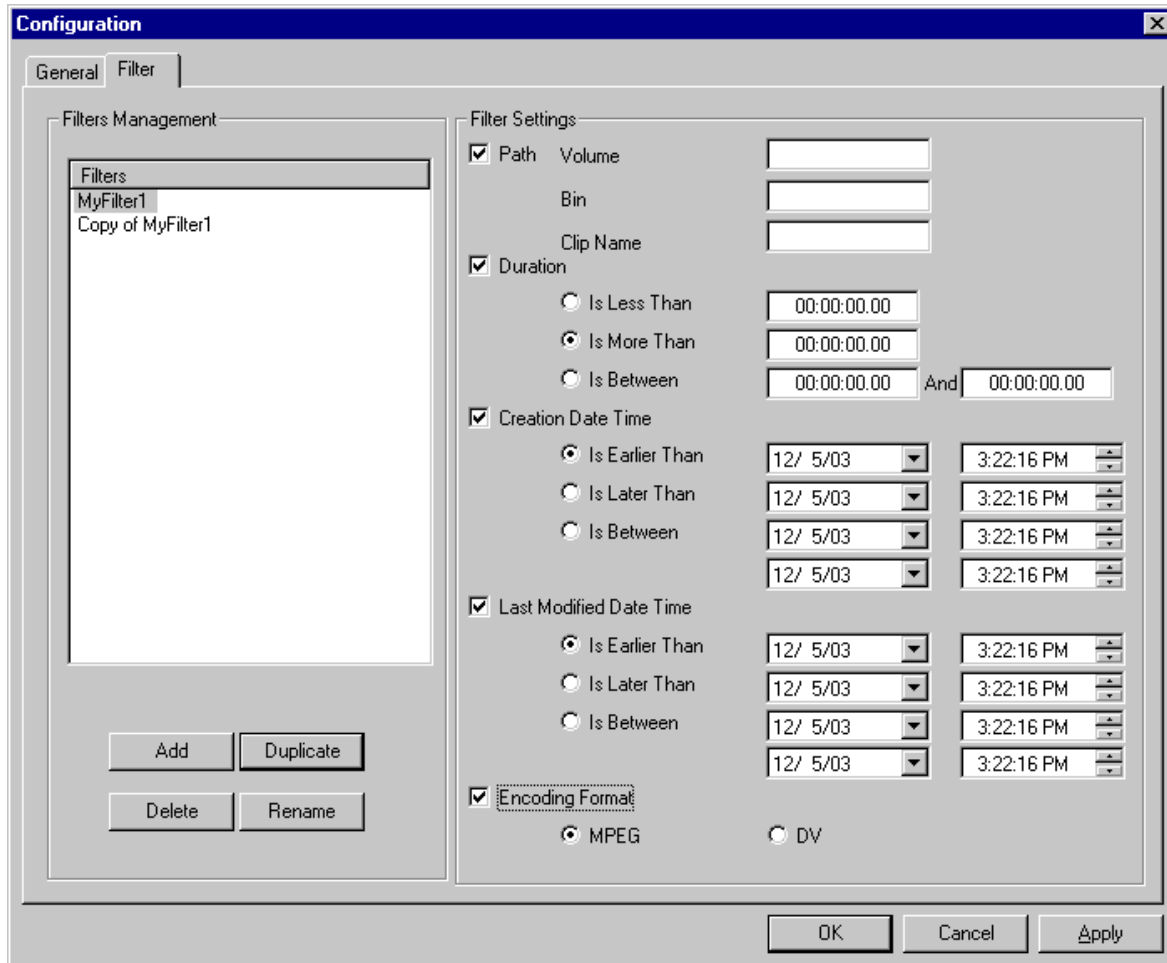
7. When you are satisfied with your settings, click **Apply** to put settings into effect and leave the dialog open, or click **OK** to put settings into effect and close the dialog. When you click OK, the following occurs:

- If the manual synchronization mode is currently selected, no synchronization processes begin.
- If event, periodic, or timed Synchronization Mode is currently selected, a synchronization process might begin, depending on other settings. Refer to [“Running synchronizations” on page 16](#).

## Defining filters

You can define a filter by which InSync only processes certain files during synchronization, as follows:

1. Click **Config | View**. The Configuration dialog opens.
2. Click the **Filter** tab.



3. Click **Add**. A filter name appears in the Filters list. Change the filter name to a name of your choosing.
4. With your new filter still selected in the **Filters** list, select the filter settings to include in that filter. As you select the check box for a filter setting, its parameters become enabled for modification.
5. For your selected filter settings, modify parameters as follows:
  - **Path** — Clips in the path are synchronized. Clips outside the path are not synchronized. Make sure that the path defined here is in “Master”, as defined on the General tab. Define the path by entering, in order, one or more of the

following:

- Volume (such as *EXT*:
- Bin (such as *default*)
- Clip Name

View the path in Media Manager to verify that you have entered the correct information.

- **Duration** — Select **Is Less Than**, **Is More Than**, or **Is Between** two given times. Enter Hours:Minutes:Seconds.Frames to define the length of the clips to synchronize.
  - **Created Date Time** — Select **Is Earlier Than**, **Is Later Than**, or **In Between** two given times. Enter dates and times to define the age of the clips to synchronize or select from the drop-down list.
  - **Last Modified Date Time** — Select **Is Earlier Than**, **Is Later Than**, or **In Between** two given times. Enter dates and times to define the time last modified of the clips to synchronize or select from the drop-down list.
  - **Encoding Format** — Select the format-type of the clips to synchronize: **MPEG** or **DV**. If you want to synchronize both format-types, do not select this filter setting.
6. Select filters in the **Filters** list and use the Add, Duplicate, Delete, and Rename buttons as necessary to create your required list of filters. For example, you could duplicate and rename a filter several times and for each duplication de-select some of the filter settings or otherwise modify certain parameters so as to create a series of “windows” for tight control of the clips to be synchronized. You can have a maximum of ten filters in the list. All filters in the list are processed when synchronization occurs.
  7. When you are satisfied with your settings, click **Apply** to put settings into effect and leave the dialog open, or click **OK** to put settings into effect and close the dialog. When you click OK, the following occurs:
    - If the manual synchronization mode is currently selected, no synchronization processes begin.
    - If event, periodic, or timed synchronization mode is currently selected, a synchronization process might begin, depending on other settings. Refer to [“Running synchronizations” on page 16](#).

## Saving a configuration file

The default configuration file is stored at *C:\InSync.cfg*. This default configuration file is updated whenever you modify InSync configuration, unless you intentionally save a configuration file with a specific name or location, as explained in this procedure.

You can create and save multiple configuration files, as follows:

1. Configure settings as in [“Setting master and slave Profile XPs” on page 9](#), [“Configuring synchronization rules” on page 11](#), and [“Defining filters” on page 14](#) to create a configuration that you want to save.

2. Click **OK** to retain current settings.
3. Click **Config | Save**. The Save Configuration File As dialog box opens.
4. Name the configuration file, navigate to a location, and save the file as type \*.cfg.
5. Repeat this procedure to save other configuration files.



## Loading a configuration file

You can load one of your previously saved configuration files as means of re-configuring all settings in a batch, as follows:

1. If InSync is not already running, start it as in [“Starting and stopping InSync” on page 8](#). When the Countdown dialog box appears, click **Load Config**. The Load Configuration File dialog box appears. Continue with step 3 of this procedure.
2. If InSync is already running, click **Config | Load**. The Load Configuration File dialog box appears.
3. Navigate to the location of your saved configuration file, select it, and load it. InSync settings are re-configured accordingly.
4. Click **Config | View** to confirm that you have the correct settings.

## Running synchronizations

InSync is intended to be used primarily as an automatic synchronization tool that runs continuously in the background and triggers synchronization processes as defined by the rules that you configure. The mechanisms that run the synchronization processes are designed for this use, as follows:

- In the manual synchronization mode, click the Start button  to start a synchronization. Only in the manual synchronization mode can you directly control the start of a synchronization in this way. This is the only synchronization mode in which the Start button is enabled.
- In any synchronization mode you can pause a currently running synchronization by clicking the Pause button.  When you do so, the currently duplicating task, if any, is cancelled. The Pause button then becomes the Resume button. Clicking the button again resumes processing at the same task.
- InSync refreshes its synchronization rules at the following times: when InSync starts up; when a configuration is changed and you click OK; or when you manually load a configuration file. If a synchronization is underway at any of these times, the synchronization is cancelled and a new synchronization runs as follows:
  - If the configuration is set to manual synchronization mode, no synchronization starts.
  - If the configuration is set to periodic synchronization mode, synchronization starts immediately.
  - If the configuration is set to event synchronization mode, synchronization starts immediately.
  - If the configuration is set to timed synchronization mode, InSync reads the start



time in the configuration, and automatically starts synchronization when the time arrives.

## Managing individual synchronization tasks

Individual synchronization tasks are listed as a queue in the synchronization list. The following procedures explain how you can manage the tasks as they appear in the list.

### About task blocks

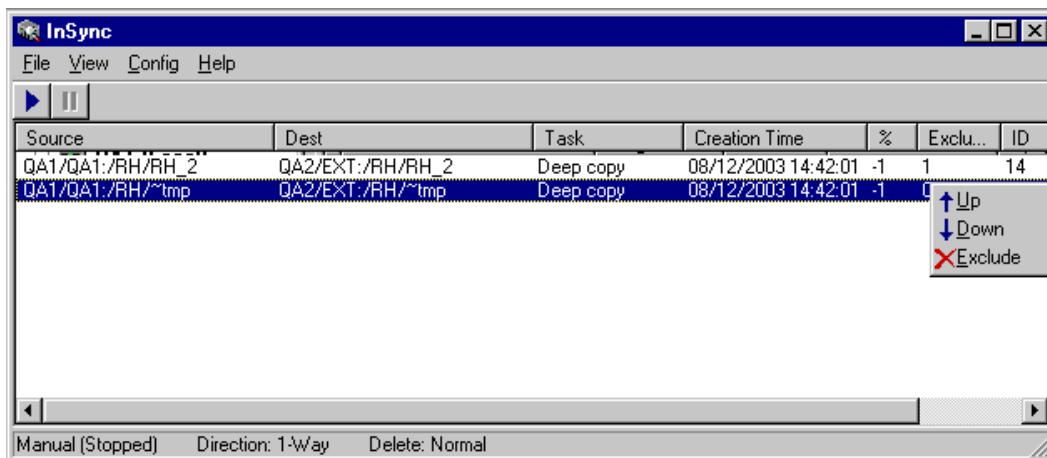
Individual tasks in the list can be related such that they form task blocks. For example, when a task uses a clip which is a result of an earlier copy or rename task, these two tasks are related. Multiple tasks can be inter-related in this way to form a task block.

As you manage individual tasks, you can do so only to the extent that you do not break task block relationships. For example, if you are moving a task up or down the list, you might find that it will not move past a related task if it creates an illogical sequence, such as renaming a clip after it has been deleted. In this case you need to move the related tasks as well and keep the task block intact.

### Re-arranging the order of synchronization tasks

You can move tasks up or down the queue as follows:

1. Right-click a task in the synchronization list.



2. On the pop-up menu, select Up or Down. This moves the task one row in the direction selected. Repeat this step until the task is in the required position.

### Excluding synchronization tasks

You can individually exclude a task so that it is not processed. This causes InSync to skip the excluded task as it works down through the synchronization queue.

To exclude a task, do the following:

1. Right-click a task in the synchronization list for which the value in the Exclude column is *N*. *N* is the value for a normally included task.

2. On the pop-up menu, select **Exclude**. This changes the value in the Exclude column from *N* to *Y*. InSync will now skip the task (and other task-block related tasks) when the task reaches the currently processing position at the head of the queue. Excluded tasks move past the currently processing position and accumulate at the top of the synchronization list area while other tasks continue their processing beneath.

## Including synchronization tasks

You can individually include an excluded task, as follows:

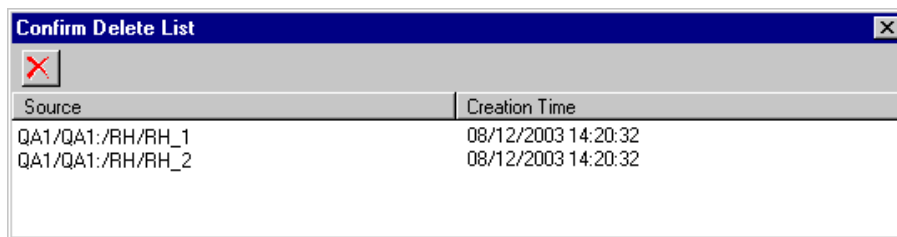
1. Right-click a task in the synchronization list for which the value in the Exclude column is *Y*. *Y* is the value for an excluded task.
2. On the pop-up menu, select **Include**. This changes the value in the Exclude column from *Y* to *N*. InSync will now process the task. Excluded tasks that InSync previously skipped and that remain at the top of the synchronization list area drop to the bottom of the list upon their inclusion.

## Manually controlling deletions


These features apply only when the Synchronization Direction is set to BiDirectional With Initial Delete.

InSync provides a process whereby no clip is deleted unless you individually confirm its deletion. To set up and use this process, do the following:

1. As explained in [“Configuring synchronization rules” on page 11](#), set your current configuration to **Delete Confirm**.
2. Allow one or more synchronizations to run in which the configuration rules direct one or more clips to be deleted.
3. Click **View | Confirm Delete List**. The Confirm Delete List opens.

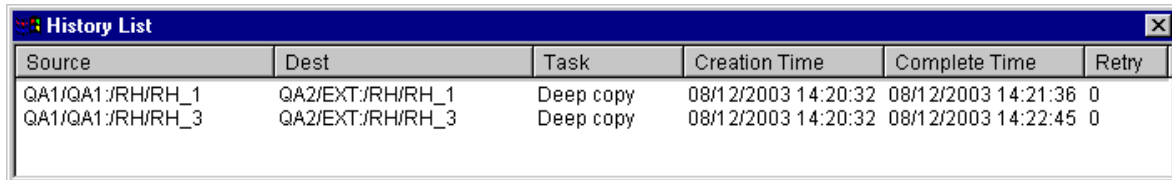


Delete tasks, including task-block related tasks, are listed for clips that should have been deleted, but were not. This is the result of setting the configuration to Confirm Delete.

4. For each clip that you want to confirm for deletion, select the row and click the Delete button.  You can use Ctrl + Click or Shift + Click to select multiple rows. InSync immediately moves these delete tasks, with their task-block related tasks, to the bottom of the synchronization queue and then closes the Confirm Delete List window. InSync processes the delete tasks when the tasks reach the currently processing position at the head of the queue.

## Viewing synchronization history

To view a list of the synchronization tasks processed since InSync was last started, click **View | History List**. The History List opens.



Source	Dest	Task	Creation Time	Complete Time	Retry
QA1/QA1:/RH/RH_1	QA2/EXT:/RH/RH_1	Deep copy	08/12/2003 14:20:32	08/12/2003 14:21:36	0
QA1/QA1:/RH/RH_3	QA2/EXT:/RH/RH_3	Deep copy	08/12/2003 14:20:32	08/12/2003 14:22:45	0

## Viewing the history log

InSync saves history logs for the last 30 days of activity, which includes startup, shutdown, and the tasks completed by InSync. Log files are stored in *C:\GVG\InSync History*. A history log file is named *Insynclog.xxyyy*, where *xx* is the day of the month and *yy* is the running number of total log files present. You can view a log file with WinTail or a text editor such as Notepad.

## Changing the slave Profile XP to be master

If you must remove the master Profile XP (call it Unit A) from service and place the slave Profile XP (call it Unit B) on line, and you want to maintain redundancy, you must reassign Profile XP B to be master and assign a different Profile XP (call it Unit C) as slave. You can do this by preparing a configuration file in advance, so that you can quickly load it should the need arise, or you can simply change the current configuration. In either case, use the following procedure to create the required configuration.

To change the designation of Profile XP B from slave to master, do the following:

1. Install InSync on Profile XP B (if it is not already installed). Follow the installation instructions given earlier.
2. On Profile XP B, set Profile XP B as master and Profile XP C as slave.
3. Select **Manual** synchronization mode so that you can control the start of the synchronization.
4. Make other configurations, according to your synchronization requirements.
5. Click **OK**.
6. If you do not want to use the configuration file immediately, save it with an appropriate name, then re-load your previous configuration.
7. If you do want to use the configuration immediately, first make sure that PortServer is running on Profile XP C, then click the Start button.
8. After the initial synchronization completes, you can change the synchronization mode according to your ongoing synchronization requirements.

