



grass valley
A **BELDEN** BRAND

EDIUS XRE

Users Guide
version 9.0

www.grassvalley.com

F0701803012
March 2018

Copyright Copyright 2013-2018 Grass Valley. All rights reserved. Portions of software © 2000 – 2018, Microsoft Corporation. All rights reserved. This document may not be copied in whole or in part, or otherwise reproduced except as specifically permitted under U.S. copyright law, without the prior written consent of Grass Valley, Inc., P.O. Box 59900, Nevada City, California 95959-7900. This product may be covered by one or more U.S. and foreign patents.

Disclaimer Product options and specifications subject to change without notice. The information in this manual is furnished for informational use only, is subject to change without notice, and should not be construed as a commitment by Grass Valley, Inc. Grass Valley, Inc. assumes no responsibility or liability for any errors or inaccuracies that may appear in this publication.

U.S. Government Restricted Rights Legend Use, duplication, or disclosure by the United States Government is subject to restrictions as set forth in subparagraph (c)(1)(ii) of the Rights in Technical Data and Computer Software clause at DFARS 252.277-7013 or in subparagraph c(1) and (2) of the Commercial Computer Software Restricted Rights clause at FAR 52.227-19, as applicable. Manufacturer is Grass Valley, Inc., P.O. Box 59900, Nevada City, California 95959-7900 U.S.A.

Trademarks and Logos Grass Valley, K2, Aurora, Summit, Dyno, Solo, Infinity, Turbo, Profile, Profile XP, NetCentral, NewsBrowse, NewsEdit, NewsQ, NewsShare, NewsQ Pro, and Media Manager are either registered trademarks or trademarks of Grass Valley, Inc. in the United States and/or other countries. Grass Valley, Inc. products are covered by U.S. and foreign patents, issued and pending. Additional information regarding Grass Valley, Inc. trademarks and other proprietary rights may be found at www.grassvalley.com.

Other trademarks and logos used in this document are either registered trademarks or trademarks of the manufacturers or vendors of the associated products, such as Microsoft® Windows® operating system, Windows Media® player, Internet Explorer® internet browser, and SQL Server™. QuickTime and the QuickTime logo are trademarks or registered trademarks of Apple, Inc., used under license therefrom. Intel, Pentium, Xeon and Core Duo are the trademarks or registered trademarks of Intel Corporation or its subsidiaries in the United States of America and other countries. They are manufactured based on their own license.

Manufactured under license from Dolby Laboratories. Dolby and the double-D symbol are trademarks of Dolby Laboratories. Unpublished work. Copyright 2003-2012 Dolby Laboratories, Inc. and Dolby Laboratories Licensing Corporation. All right reserved.



**Manual
Explanation**

- If there are any variations between the explanation in this manual and the actual application method, priority is given to the actual application method.
- The screens used as examples in this manual are those of the development stage, so they may vary from those in the final product.
- This manual is written for people who have a basic knowledge of how to use a computer. If there are no special instructions, perform the same operation as a normal computer operation.

**Revision
Status**

| Rev Date | Description |
|------------------|---------------------|
| July 8, 2013 | Release F3951307031 |
| April 28, 2014 | Release F3951404281 |
| October 28, 2014 | Release F3951410281 |
| November 1, 2016 | Release F0701611014 |
| March 16, 2018 | Release F0701803012 |

Contents

| | |
|---|-----------|
| Safety Summaries | 6 |
| General Safety Summary | 6 |
| Safety Terms and Symbols | 7 |
| Service Safety Summary..... | 8 |
| Certifications and Compliances..... | 8 |
| Laser Compliance | 9 |
| Résumé des mesures de sécurité | 10 |
| Résumé des mesures de sécurité générales | 10 |
| Termes et symboles de sécurité | 11 |
| Résumé des mesures de sécurité d'entretien | 12 |
| Certifications et conformités | 12 |
| Conformité laser..... | 14 |
| | |
| 1 Before Using | |
| Before Using | 15 |
| Package Contents | 15 |
| Grass Valley Product Support | 16 |
| Web Technical Support..... | 16 |
| Phone Support | 16 |
| Authorized Support Representative | 17 |
| | |
| 2 Overview | |
| EDIUS XRE Overview | 18 |
| Three elements comprising EDIUS XRE | 18 |

| | |
|--|----|
| 3 Setup | |
| Installing the controller/engine | 20 |
| Activation of Serial (Online)..... | 21 |
| Activation of Serial (Offline) | 22 |
| Installing the client | 24 |
| 4 EDIUS XRE Settings | |
| Setting Example | 25 |
| Configuring the controller..... | 26 |
| Configuring XREController..... | 26 |
| Configuring XRE Monitor (management mode) | 28 |
| Configuring the engine | 31 |
| Connection settings to the controller | 31 |
| Plug-in settings..... | 35 |
| Configuring the client..... | 36 |
| Configuring XRE Monitor (client mode) | 36 |
| 5 EDIUS XRE Operations | |
| Requesting Rendering Jobs | 39 |
| Things to check when creating a project on an client..... | 39 |
| Requesting a rendering job from an client..... | 40 |
| XRE Monitor Operations | 42 |
| Checking job status | 42 |
| About error notifications | 45 |
| Checking job properties..... | 46 |
| Sorting the order to perform jobs in XRE Monitor (management mode) | 47 |
| 6 Troubleshooting | |
| Troubleshooting | 49 |

Safety Summaries

General Safety Summary

Review the following safety precautions to avoid injury and prevent damage to this product or any products connected to it.

While using this product, you may need to access other parts of the system. Read the General Safety Summary in other system manuals for warnings and cautions related to operating the system.

Injury Precautions

Use Proper Power Cord

To avoid fire hazard, use only the power cord specified for this product.

Ground the Product

This product is grounded through the grounding conductor of the power cord. To avoid electric shock, the grounding conductor must be connected to earth ground. Before making connections to the input or output terminals of the product, ensure that the product is properly grounded.

Do Not Operate Without Covers

To avoid electric shock or fire hazard, do not operate this product with covers or panels removed.

Do Not Operate in Wet/Damp Conditions

To avoid electric shock, do not operate this product in wet or damp conditions.

Do Not Operate in an Explosive Atmosphere

To avoid injury or fire hazard, do not operate this product in an explosive atmosphere.

Avoid Exposed Circuitry

To avoid injury, remove jewelry such as rings, watches, and other metallic objects. Do not touch exposed connections and components when power is present.

Product Damage Precautions

Use Proper Power Source

Do not operate this product from a power source that applies more than the voltage specified.

Provide Proper Ventilation

To prevent product overheating, provide proper ventilation.

Do Not Operate With Suspected Failures

If you suspect there is damage to this product, have it inspected by qualified service personnel.


Battery Replacement


To avoid damage, a battery must be replaced once every five years. Please contact Grass Valley Product Support to replace the battery.

Safety Terms and Symbols

Terms in This Manual

These terms may appear in this manual:

 **WARNING:** *Warning statements identify conditions or practices that can result in personal injury or loss of life.*

 **CAUTION:** *Caution statements identify conditions or practices that may result in damage to equipment or other property, or which may cause equipment crucial to your business environment to become temporarily non-operational.*

Terms on the Product

These terms may appear on the product:

DANGER indicates a personal injury hazard immediately accessible as one reads the marking.

WARNING indicates a personal injury hazard not immediately accessible as you read the marking.

CAUTION indicates a hazard to property including the product.

Symbols on the Product


The following symbols may appear on the product:

 DANGER high voltage

 Protective ground (earth) terminal

 ATTENTION – refer to manual

Service Safety Summary

 **WARNING:** *The service instructions in this manual are intended for use by qualified service personnel only. To avoid personal injury, do not perform any servicing unless you are qualified to do so. Refer to all safety summaries before performing service.*

Do Not Service Alone

Do not perform internal service or adjustment of this product unless another person capable of rendering first aid and resuscitation is present.

Disconnect Power

To avoid electric shock, disconnect the main power by means of the power cord or, if provided, the power switch.

Use Care When Servicing With Power On

Dangerous voltages or currents may exist in this product. Disconnect power and remove battery (if applicable) before removing protective panels, soldering, or replacing components.

To avoid electric shock, do not touch exposed connections.

Certifications and Compliances

Canadian Certified Power Cords

Products that are relocated to other countries should use nationally certified power cords and plugs to ensure safe operation of the product.

FCC Emission Control

This equipment has been tested and found to comply with the limits for a Class A digital device, pursuant to Part 15 of the FCC Rules. These limits are designed to provide reasonable protection against harmful interference when the equipment is operated in a commercial environment. This equipment generates, uses, and can radiate radio frequency energy and, if not installed and used in accordance with the instruction manual, may cause harmful interference to radio communications. Operation of this equipment in a residential area is likely to cause harmful interference in which case the user will be required to correct the interference at his own expense. Changes or modifications not expressly approved by Grass Valley can affect emission compliance and could void the user's authority to operate this equipment.

Canadian EMC Notice of Compliance

This digital apparatus does not exceed the Class A limits for radio noise emissions from digital apparatus set out in the Radio Interference Regulations of the Canadian Department of Communications.

This product must not be used in residential areas.

EMC Directive

Class A Warning

This product must not be used in residential areas.

FCC Emission Limits

This device complies with Part 15 of the FCC Rules. Operation is subject to the following two conditions: (1) This device may not cause harmful interference, and (2) this device must accept any interference received, including interference that may cause undesirable operation.

Laser Compliance

Laser Safety Requirements

The system used in this product is a Class 1 certified laser product. Operating this product outside specifications or altering its original design may result in hazardous radiation exposure, and may be considered an act of modifying or new manufacturing of a laser product under U.S. regulations contained in 21CFR Chapter 1, subchapter J or CENELEC regulations in HD 482 S1.

People performing such an act are required by law to recertify and reidentify this product in accordance with provisions of 21CFR subchapter J for distribution within the U.S.A., and in accordance with CENELEC HD 482 S1 for distribution within countries using the IEC 825 standard.

Laser Safety

Laser safety in the United States is regulated by the Center for Devices and Radiological Health (CDRH). The laser safety regulations are published in the "Laser Product Performance Standard," Code of Federal Regulation (CFR), Title 21, Subchapter J. The International Electrotechnical Commission (IEC) Standard 825, "Radiation of Laser Products, Equipment Classification, Requirements and User's Guide," governs laser products outside the United States. Europe and member nations of the European Free Trade Association fall under the jurisdiction of the Comité Européen de Normalization Electrotechnique (CENELEC).

Résumé des mesures de sécurité

Résumé des mesures de sécurité générales

Consultez les mesures de sécurité suivantes afin d'éviter toute blessure corporelle et dommage au produit, et pour tous les produits qui y sont connectés.

Lors de l'utilisation de ce produit, il est possible que vous ayez à accéder à d'autres parties du système. Consultez le Résumé des mesures de sécurité générales du manuel des autres systèmes pour prendre connaissance des mises en garde et des avertissements relatifs à leur utilisation.

Précautions relatives aux blessures

Utiliser un cordon d'alimentation approprié

Afin d'éviter un risque d'incendie, utilisez uniquement le cordon d'alimentation spécifié pour ce produit.

Mettre le produit à la terre

Ce produit est mis à la terre au moyen du conducteur de terre du cordon d'alimentation. Afin d'éviter un choc électrique, le conducteur de terre doit être connecté à la terre. Avant de procéder à d'autres connexions aux terminaux entrants et sortants du produit, assurez-vous qu'il est mis à la terre de façon adéquate.

Ne pas faire fonctionner le produit sans couvercle

Afin d'éviter un choc électrique ou un risque d'incendie, ne faites pas fonctionner ce produit lorsque que les couvercles ou les panneaux sont retirés.

Ne pas faire fonctionner le produit dans des conditions humides

Afin d'éviter un choc électrique, ne faites pas fonctionner ce produit dans des conditions humides.

Ne pas faire fonctionner le produit dans une atmosphère explosive

Afin d'éviter une blessure corporelle ou un risque d'incendie, ne faites pas fonctionner ce produit dans une atmosphère explosive.

Éviter les circuits à nu

Afin d'éviter une blessure corporelle, retirez tous vos bijoux, tels que bagues, montres et autres objets métalliques. Ne touchez pas les connexions ni les composants à nu lorsque l'appareil est sous tension.

Précautions relatives aux dommages au produit

Utiliser une source d'alimentation appropriée

Ne faites pas fonctionner ce produit avec une source d'alimentation qui applique une tension supérieure à celle spécifiée.

Prévoir une ventilation adéquate

Afin d'empêcher une surchauffe du produit, prévoyez une ventilation adéquate.

Ne pas faire fonctionner le produit en cas de soupçons de panne

Si vous remarquez que ce produit est endommagé, faites-le examiner par un personnel d'entretien qualifié.


Remplacement de la pile


Afin d'éviter tout dommage, la pile doit être remplacée une fois tous les cinq ans. Veuillez contacter le support technique de Grass Valley pour le remplacement de la pile.

Termes et symboles de sécurité

Termes utilisés dans ce manuel

Les termes suivants peuvent apparaître dans ce manuel :

 **MISE EN GARDE:** Les indications de mise en garde identifient des conditions ou des pratiques qui peuvent provoquer des blessures corporelles ou le décès.

 **AVERTISSEMENT:** Les indications d'avertissement identifient des conditions ou des pratiques qui peuvent provoquer des dommages à l'équipement ou à d'autres biens, ou qui peuvent rendre temporairement non opérationnel un équipement indispensable à l'environnement de votre activité.

Termes relatifs au produit

Les termes suivants peuvent apparaître sur le produit :

DANGER indique un risque de blessure corporelle immédiatement accessible lors de la lecture de l'inscription.

MISE EN GARDE indique un risque de blessure corporelle non immédiatement accessible lors de la lecture de l'inscription.

AVERTISSEMENT indique un risque relatif aux biens, y compris le produit.

Symboles sur le produit

Les symboles suivants peuvent apparaître sur le produit :



DANGER haute tension



Prise de mise à la masse (terre)



ATTENTION – consultez le manuel

Résumé des mesures de sécurité d'entretien



MISE EN GARDE: Les instructions d'entretien de ce manuel sont destinées uniquement à du personnel d'entretien qualifié. Afin d'éviter toute blessure corporelle, ne procédez à aucun entretien à moins de posséder les qualifications requises. Consultez tous les résumés des mesures de sécurité avant de procéder à l'entretien.

Ne pas procéder seul à l'entretien

Ne procédez pas à un entretien ou à un ajustement interne de ce produit à moins qu'une autre personne en mesure de prodiguer les premiers soins ou une réanimation ne soit présente.

Débrancher l'alimentation

Afin d'éviter un choc électrique, coupez l'alimentation principale au moyen du cordon d'alimentation ou, le cas échéant, de l'interrupteur d'alimentation.

Faire preuve de prudence lors de l'entretien lorsque l'appareil est sous tension

Ce produit peut être le cadre de tensions et d'intensités dangereuses. Débranchez l'alimentation et retirez la pile (le cas échéant) avant de retirer les panneaux de protection, de procéder à une soudure ou de remplacer des composants.

Afin d'éviter un choc électrique, ne touchez pas les connexions à nu.

Certifications et conformités

Cordons d'alimentation certifiés pour le Canada

Les produits délocalisés dans d'autres pays doivent utiliser des cordons d'alimentation et des fiches certifiés pour assurer une utilisation en toute sécurité du produit.

Contrôle d'émission du FCC

Le présent équipement a été testé et approuvé comme répondant aux normes des dispositifs numériques de classe A, conformément à la Partie 15 des règlements du FCC. Ces limites sont conçues pour fournir une protection raisonnable contre les brouillages préjudiciables dans un environnement commercial. Cet appareil produit, utilise et peut dégager de l'énergie radioélectrique et, s'il n'est pas installé et utilisé selon les instructions, il peut être la source d'interférences gênantes pour les communications radio. L'utilisation de cet appareil dans une zone résidentielle peut également causer des interférences gênantes, auquel cas l'utilisateur s'engage à mettre fin à ces interférences à ses frais. Les changements et modifications non expressément approuvés par Grass Valley peuvent influencer sur la conformité des émissions et pourraient annuler l'autorisation de l'utilisateur à utiliser cet appareil.

Avis de conformité de la CEM pour le Canada

Le présent appareil numérique n'émet pas de bruits radioélectriques dépassant les limites applicables aux appareils numériques de la classe A prescrites dans le Règlement sur le brouillage radioélectrique édicté par le ministère des Communications du Canada.

Ce produit ne doit pas être utilisé dans des zones résidentielles.

Directive CEM

Avertissement relatif à la classe A

Ce produit ne doit pas être utilisé dans des zones résidentielles.

Limites d'émission du FCC

Cet appareil est conforme à la partie 15 des règlements du FCC. Son utilisation est soumise aux deux conditions suivantes : (1) Cet appareil ne doit pas provoquer d'interférences nuisibles, et (2) cet appareil doit tolérer toute interférence reçue, y compris des interférences qui pourraient provoquer un fonctionnement indésirable.

Conformité laser

Règles de sécurité relatives au laser

Le système utilisé dans ce produit est un laser certifié de classe 1. L'utilisation de ce produit hors des spécifications ou la modification de sa conception d'origine peuvent entraîner une exposition dangereuse à des radiations, et peuvent être considérées comme un acte de modification ou une nouvelle fabrication d'un produit laser, conformément à la réglementation 21CFR des États-Unis, chapitre 1, section J ou de la réglementation CENELEC dans HD 482 S1.

Les personnes procédant audit acte doivent, selon la loi, certifier et identifier à nouveau ce produit conformément aux dispositions 21CFR, section J relatives à la distribution aux États-Unis, et conformément à la réglementation CENELEC HD 482 S1 pour la distribution dans les pays utilisant la norme IEC 825.

Sécurité laser

La sécurité laser aux États-Unis est réglementée par le Center for Devices and Radiological Health (CDRH). La réglementation relative à la sécurité laser est publiée dans le « Laser Product Performance Standard », Code of Federal Regulation (CFR), titre 21, section J.

La commission électrotechnique internationale (CEI), norme 825, « Radiation des produits laser, classification des équipements, exigences et mode d'emploi », régit les produits laser à l'extérieur des États-Unis. L'Europe et les nations membres de l'Association européenne de libre-échange tombent sous la juridiction du Comité Européen de Normalisation Électrotechnique (CENELEC).

Before Using

Before Using

Package Contents

Please verify that the following items are included in EDIUS XRE.

- EDIUS XRE Server/Client DVD
- Serial number
- EDIUS XRE User Guide (Download) (this book)

Note

- Activation cannot be performed without the serial number. Keep the serial number not to be lost. The serial number cannot be reissued for any reason.

Grass Valley Product Support

For technical assistance, to check on the status of a question, or to report a new issue, contact Grass Valley Product Support via e-mail, the Web, or by phone or fax.

Web Technical Support

To access support information on the Web, visit the product support Web page on the Grass Valley Web site. You can download software or find solutions to problems by searching our Frequently Asked Questions (FAQ) database.

World Wide Web:

www.grassvalley.com/support/contact

Local Support Centers:

www.grassvalley.com/ad/contact_customer_support

Phone Support

Use the following information to contact product support by phone during business hours. After hours phone support is available for warranty and contract customers.

| | |
|--|---------------------|
| United States/Americas | +1 801 222 5204 |
| Europe, United Kingdom, Africa and The Middle East | +44 (0)20 8867 6305 |
| Asia (except Japan and Korea) | +86 21 5869 8668 |

Authorized Support Representative

To locate the support representative for your country, visit the Product Support Web page on the Grass Valley Web site: www.grassvalley.com/support.



END-OF-LIFE PRODUCT RECYCLING NOTICE

Grass Valley's innovation and excellence in product design also extends to the programs we've established to manage the recycling of our products. Grass Valley has developed a comprehensive end-of-life product take back program for recycle or disposal of end-of-life products. Our program meets the requirements of the European Union's WEEE Directive, the United States Environmental Protection Agency, and U.S. state and local agencies.

Grass Valley's end-of-life product take back program assures proper disposal by use of Best Available Technology. This program accepts any Grass Valley branded equipment. Upon request, a Certificate of Recycling or a Certificate of Destruction, depending on the ultimate disposition of the product, can be sent to the requester.

Grass Valley will be responsible for all costs associated with recycling and disposal, including freight. However, you are responsible for the removal of the equipment from your facility and packing the equipment to make it ready for pickup.



For further information on the Grass Valley product take back system please contact Grass Valley at + 800 80 80 20 20 or +33 1 48 25 20 20 from most other countries. In the U.S. and Americas please call 800-547-8949 or 530-478-4148, and ask to be connected to the EH&S Department. Additional information concerning the program can be found at: www.grassvalley.com/about/environmental-policy

Overview

Section 2

EDIUS XRE Overview

EDIUS XRE is a system for having a networked external PC perform rendering processes when exporting a project created in EDIUS. On an EDIUS edit terminal, you can perform another task as soon as you request an external PC to perform a rendering process, without waiting until the exporting process is complete.

Three elements comprising EDIUS XRE

Each rendering process you request from an EDIUS edit terminal is called a "rendering job". EDIUS XRE has networked PCs which have the following three different roles assigned to process rendering jobs.

➤ Client

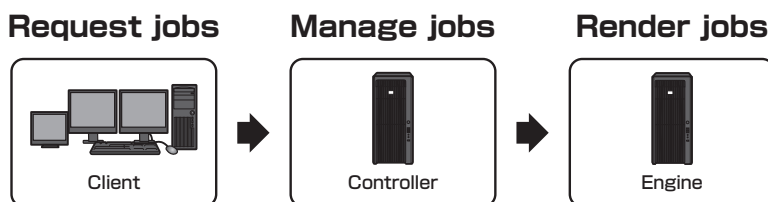
It is an edit terminal where EDIUS is installed. It requests the controller to perform a rendering job.

➤ Controller

It receives a rendering job request from a client, looks for an engine that can perform the task, and assigns the rendering job to it. The controller communicates with engines periodically. If a response is lost from an engine, the controller will assign the rendering job assigned to the engine to another one and have it performed again.

➤ Engine

It receives an instruction from the controller and processes a rendering job.

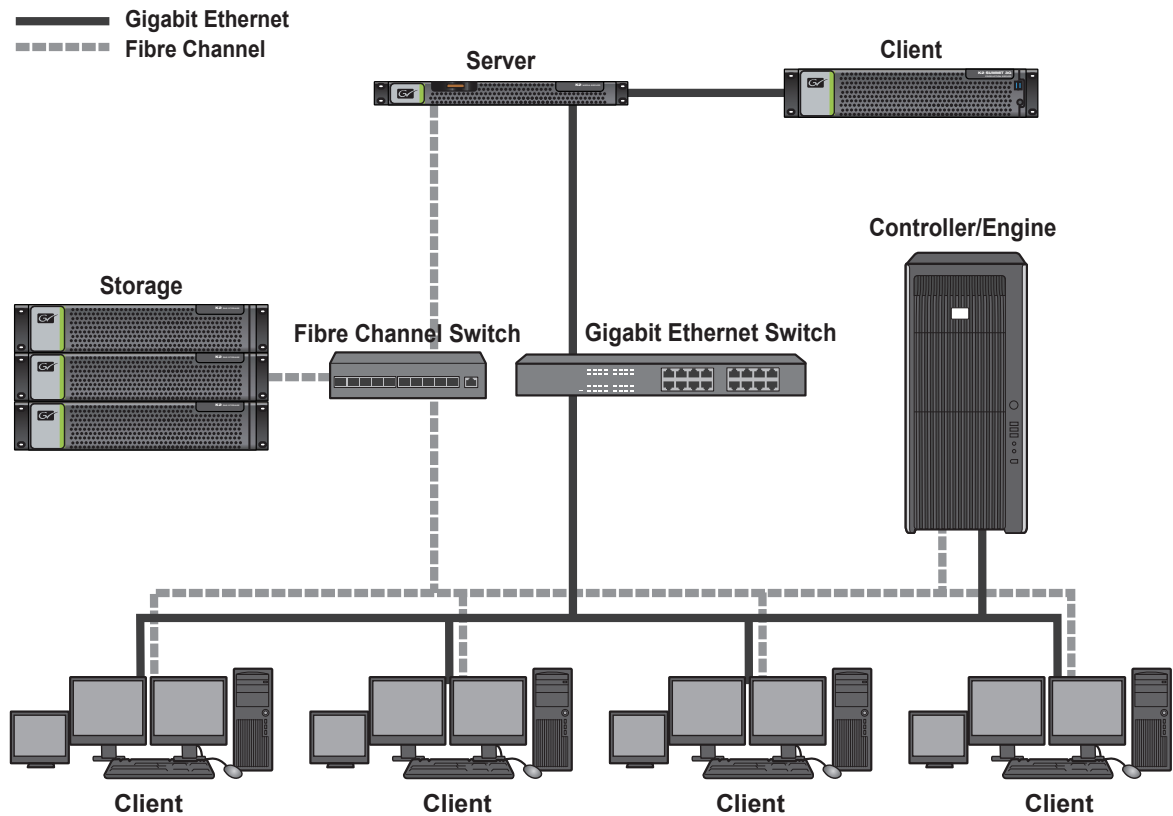


You can also check the status of rendering jobs in XRE Monitor. If it is started on the controller, XRE Monitor (management mode) is enabled, which allows you to sort the order to perform rendering jobs.

System configuration example

The following figure shows an example where four clients are connected to a single controller/engine to perform rendering processes. The section 4 describes how to set up EDIUS XRE based on a following system configuration example.

EDIUS XRE Settings ► P25



Note

- In v 8.0 or later, EDIUS XRE supports the service of Windows. If you use all functions of EDIUS XRE, you need log on a user with Administrator.
- EDIUS XRE needs same version of EDIUS which is on the client. In different version of EDIUS, EDIUS XRE will not finish rendering correctly.
- If you need to connect with GV STRATUS, EDIUS XRE require the option license.

Installing the controller/engine

Install XREController/GVRenderEngine on a PC you want to use as an controller/engine.

- Note**
- Close all other application software including resident software before installation.
 - Before installing the software on your PC, be sure to login with a user ID (such as Administrator) authorized to change system settings.
 - XREController/GVRenderEngine cannot be installed on a PC where EDIUS is installed.

1 Set your EDIUS XRE Server/Client DVD into the DVD drive.

Double-click XREServer_9.xx_xxxx_Setup.exe.

2 Click [Install] to agree the [GRASS VALLEY SOFTWARE LICENSE AGREEMENT TERMS AND CONDITIONS].

- POINT**
- Click [Close] to cancel the installation. If you do not agree to the license agreement, stop the installation and contact our customer support in writing.

- Note**
- Be sure to read through all of the terms and conditions by scrolling the window.

3 Click [Next] in the Setup wizard.

4 Enter the [User], [Password], and then click [Next].

EDIUS XRE is service of Windows. The installation of EDIUS XRE, the account information authorized are required.

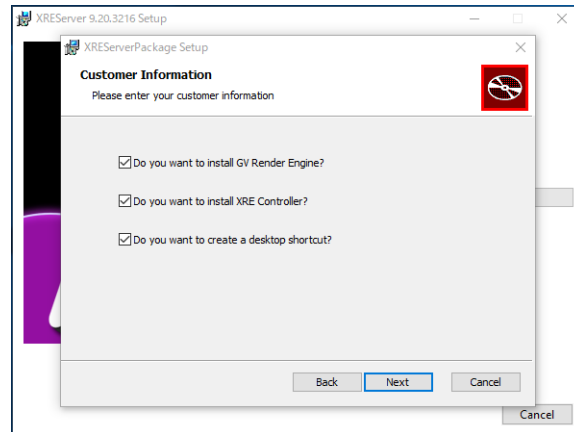
- Note**
- If you change account information, you need to reinstall EDIUS XRE in order to set the new account information.

5 Check the item(s) to install, and then click [Next].

Controller : Select "XREController"

Engine : Select "GVRenderEngine"

It is possible to use the controller and engine on a PC. In this case, please select the both of XREController and GVRenderEngine.



6 Select [Typical], and then click [Install].

The installation of XREController/GVRenderEngine begins.

7 Click [Finish].

The installation is complete. After restarted, the error message about serial registration will be appeared.

Note

- If the following items are installed on the PC to be used as the client, you must install them on the PC for EDIUS XRE system as well.
 - Third-party plug-ins
 - Title fonts

Activation of Serial (Online)

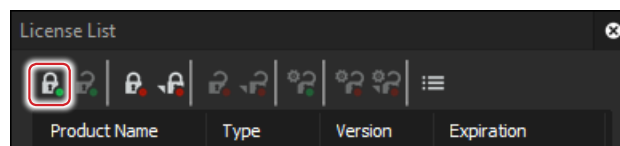
Activation is performed after the complete of installation. Activation requires internet connectivity environment. The function installed when activation was not performed cannot be used.

Note

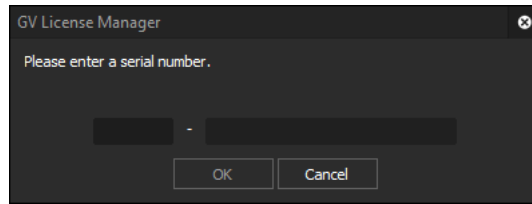
- Activation is required in the GVRenderEngineService installed machine.

1 Click the [start] menu, and then click [All Programs] > [Grass Valley] > [GV LicenseManager].

2 Click [Online Activation] in the [License List] dialog box.



- 3 Enter a serial number, and click [OK].



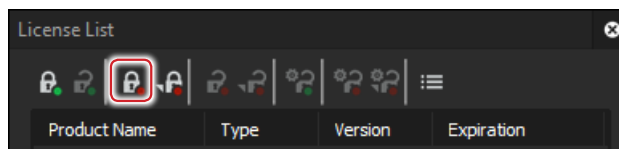
Activation is complete.

POINT • Activation in the offline environment is also possible.
Activation of Serial (Offline) ► P22

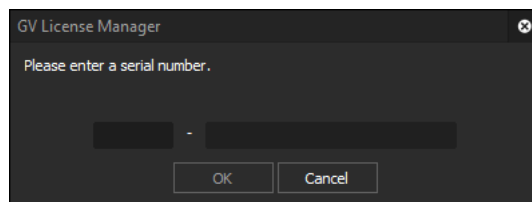
Activation of Serial (Offline)

Note • Activation is required in the GVRenderEngineService installed machine.

- 1 Connect a USB stick to the PC on which GVRenderEngineService has been installed.
- 2 Click the [start] menu, and then click [All Programs] > [Grass Valley] > [GV LicenseManager].
- 3 Click [Offline Activation Create ID File] in the [License List] dialog box.

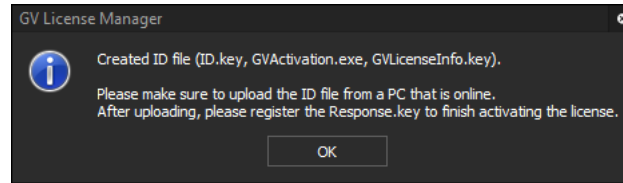


- 4 Enter a serial number, and click [OK].



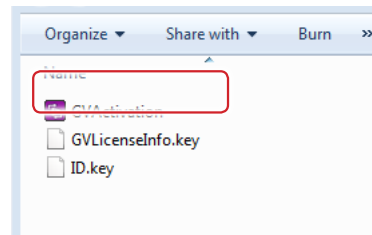
- 5 Choose the USB stick as save location and then click [Choose folder].

6 Click [OK].



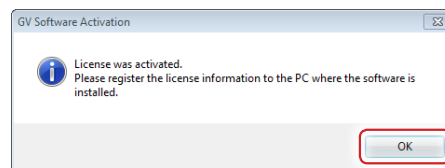
7 Eject the USB stick from the machine and then insert into a Windows PC connected to an internet.

8 Open the USB stick and then double-click [GVActivation].



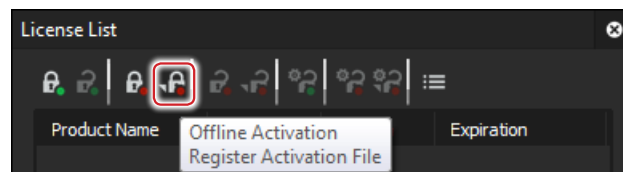
9 Click [Yes].

10 Click [OK].



11 Eject the USB stick from the Windows PC and then insert to the PC on which GVRenderEngineService has been installed.

12 Click [Offline Activation Register Activation File] in the [License List] dialog box.



13 Choose Response.key in the folder where the ID file of the USB stick has been exported, and then click [Open].

14 Click [OK].

15 Activated license will be listed. Close the window by clicking [X].

Installing the client

Install XRE Client on a PC you want to use as a client.

POINT • If EDIUS (v 8.0 or later) is not installed on the PC, only XRE Monitor (client mode) will be installed.

Note • Close all other application software including resident software before installation.
• Before installing the software on your PC, be sure to login with a user ID (such as Administrator) authorized to change system settings.

1 Set your EDIUS XRE Server/Client DVD into the drive.

Double-click XREClient_9.xx_xxxx_Setup.exe.

2 Click [Install] to agree the [GRASS VALLEY SOFTWARE LICENSE AGREEMENT TERMS AND CONDITIONS].

POINT • Click [Close] to cancel the installation. If you do not agree to the license agreement, stop the installation and contact our customer support in writing.

Note • Be sure to read through all of the terms and conditions by scrolling the window.

3 Click [Next] in the Setup wizard.

4 Check [Do you want to create a desktop shortcut?], and then click [Next].

5 Select [Typical], and then click [Install].

The installation of XREClientService begins.

6 Click [Finish].

The installation is complete.

EDIUS XRE Settings

Before you begin to configure EDIUS XRE, you must establish the network connection between the controller, engine, and client via Ethernet.

Note • EDIUS XRE system performs PC-to-PC communications through TCP/IP. Therefore, you must first configure IP addresses and port numbers for the communication.

Setting Example

In this section, each step is described based on the following system setting example.

Controller/Engine PC

➤ Controller settings

(Use a computer name: XREServer1, IP address: 172.25.90.161)

| | |
|-------------------------------------|---|
| Project folder | Controller Project Folder (any folder name) on the Server Ex. \\XREServer1\XRE_Controller_Project_Folder |
| Port | 1223 (default) |
| Days to keep jobs in history | 30 (default) |

➤ Engine settings

| | |
|-----------------------|---|
| Node name | Engine1 (any name) |
| Server setting | |
| Name | XREServer1 (any name) |
| Address | "XREServer1" (computer name) or "172.25.90.161" |
| Port | 1223 (default) |

Client PC

➤ XRE Monitor settings (common settings for all clients)

| Server setting | |
|----------------|---|
| Name | XREServer1 (any name) |
| Address | "XREServer1" (computer name of the base PC where controller/engine is installed) or "172.25.90.161" |
| Port | 1223 (default) |

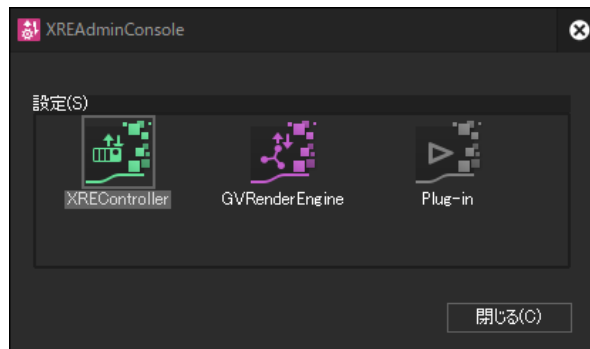
Configuring the controller

Configuring XREController

Configure settings including the location of the "project folder" where rendering job information is saved and port on the PC to be used for EDIUS XRE system.

- 1 Click the [start] menu, and then click [All Programs] > [Grass Valley] > [XREAdminConsole].

❖ [XREAdminConsole] dialog box



XRE Controller

Set the project folder.

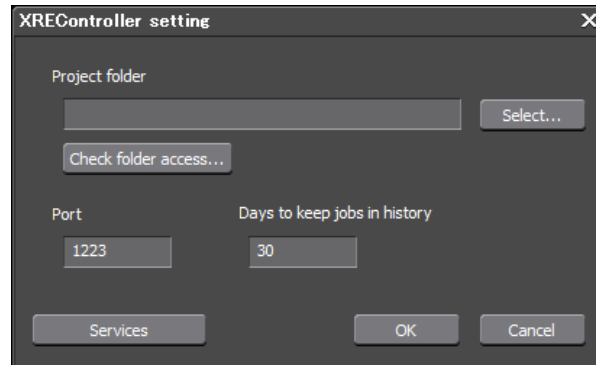
Note

- GVRenderEngine and Plug-in are the configuration of the engine. If you have installed both the controller and the engine on a PC, you are able to select GVRenderEngine and Plug-ins on the XREAdminConsole.

Configuring the engine ▶ P31

- 2 Double-click on the XREController icon.
The [XREController setting] dialog box appears.

❖ [XREController setting] dialog box



| | |
|-------------------------------------|--|
| Project folder | Register location of project folder where rendering job information is saved. If you click [Select...], you can select to specify the location. |
| Check folder access... | Check to connect with the location of project folder. |
| Port | Enter a port number. The default setting value is 1223. |
| Days to keep jobs in history | Set the number of days to keep the history of rendering jobs. The default setting value is 30 days. |
| Service | Open the service setting dialog on Windows |

Note

- You must specify a port number that is not blocked by the firewall. The firewall is turned off with the standard settings of a base PC.
- For a system whose firewall is turned on for operations, the firewall setting must be changed to unblock the desired port number.
- The system may not work properly if you specify a port number used by other programs. Therefore, you must specify an unused port number.

3 Set the project folder, and then click [OK].

POINT

- Setting the read-only and system attributes to the specified project folder can prevent accidents such as erroneous deletion of the project folder by users. Use the `Attrib` command at the command prompt to change the folder attribute.

Note

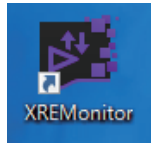
- The project folder must be specified as a folder that can be referenced from any controller/engine/client PCs and whose address display is always the same in Explorer.

4 Set each item, and then click [OK].

Continue to configure XRE Monitor (management mode).

Configuring XRE Monitor (management mode)

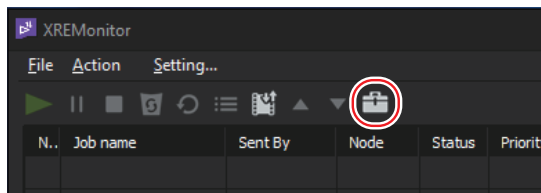
1 Double-click the XRE Monitor icon on the desktop.



Alternative

- Click the [start] menu, and then click [All Programs] > [Grass Valley] > [XREMonitor].

2 Click [Settings].

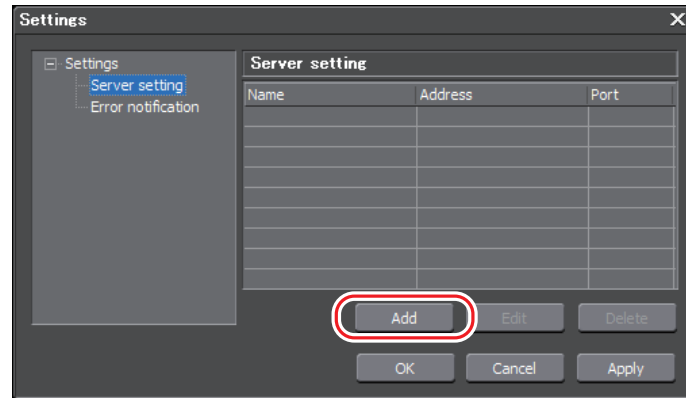


Alternative

- Click [Setting...] on the menu bar.

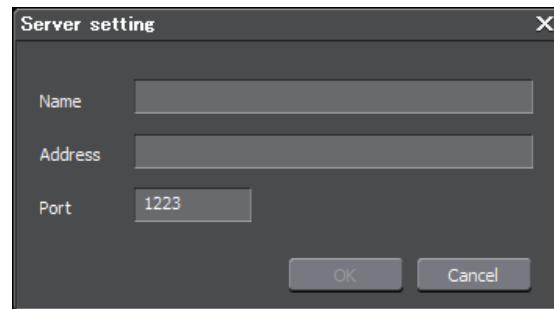
3 Click the [Settings] tree, and then click [Server setting].

4 Click [Add].



The [Server setting] dialog box appears.

❖ [Server setting] dialog box



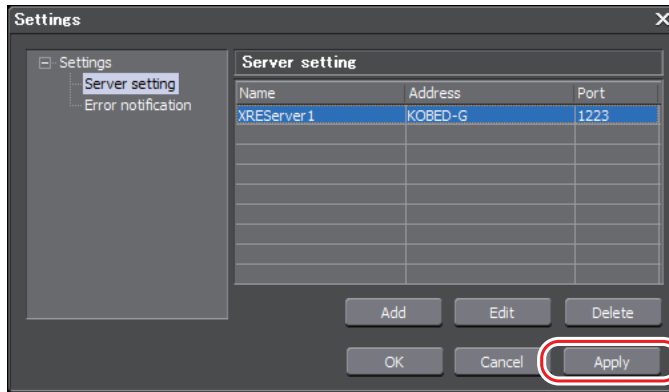
| | |
|----------------|---|
| Name | Type the name of the controller. |
| Address | Enter the computer name or IP address of the PC you want to use as an controller. |
| Port | Enter a port number. The default setting value is 1223. |

Note

- You must specify a port number that is not blocked by the firewall. The firewall is turned off with the standard settings of a base PC.
- For a system whose firewall is turned on for operations, the firewall setting must be changed to unblock the desired port number.
- The system may not work properly if you specify a port number used by other programs. Therefore, you must specify an unused port number.

5 Set each item, and then click [OK].

6 Click [Apply].

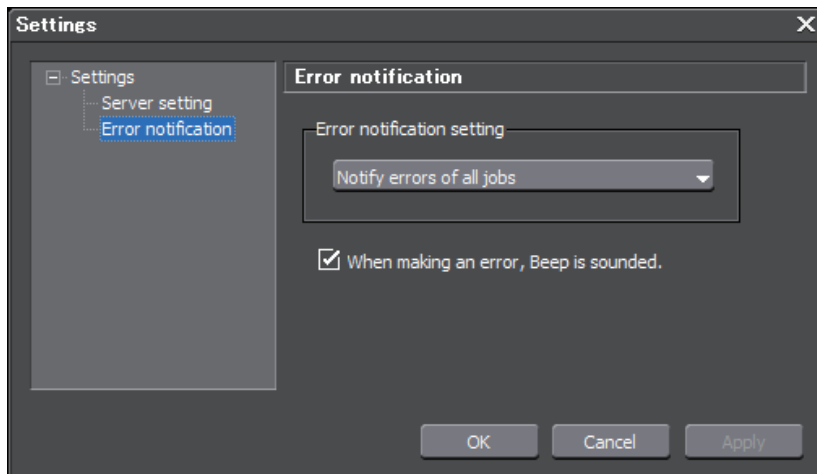


- POINT**
- If you want to change any setting, select the server to be changed from [Server setting] list and click [Edit].
 - If you want to delete any setting, select the server to be deleted from [Server setting] list and click [Delete].

Continue to configure [Error notification].

7 Click the [Settings] tree, and then click [Error notification].

❖ Error notification (management mode) dialog box



| | |
|--|---|
| <p>Error notification setting</p> | <p>Choose either [Notify errors of all jobs] or [No error notification] from the list. If you choose [Notify errors of all jobs], you will be notified of errors related to all rendering jobs instructed by the controller to each engine. *In the XRE Monitor management mode, [Notify errors of my jobs] is disabled. About error notifications ► P45</p> |
| <p>When making an error, Beep is sounded.</p> | <p>Check this option to make a beep sound when delivering error notifications.</p> |

8 Set each item, and then click [OK].

Configuring the engine

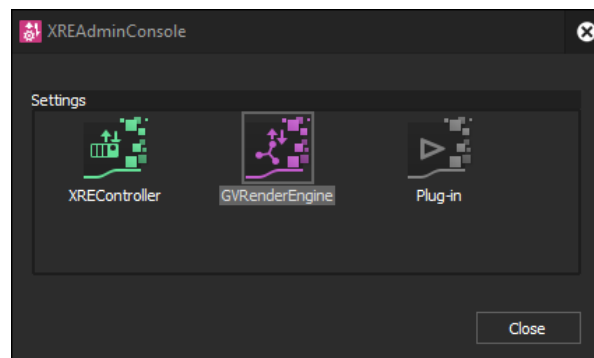
Connection settings to the controller

On the PC to be used as an engine, configure the connection settings to the controller.

Note • The destination controller must be started beforehand.
Configuring the controller ► P26

1 Click the [start] menu, and then click [All Programs] > [Grass Valley] > [XREAdminConsole].

❖ [XREAdminConsole] dialog box



| | |
|--------------------------------|---|
| <p>GV Render Engine</p> | <p>Set the connection to the controller.</p> |
| <p>Plug-ins</p> | <p>Set the plug-ins such as Importer/Exporter and Effects</p> |

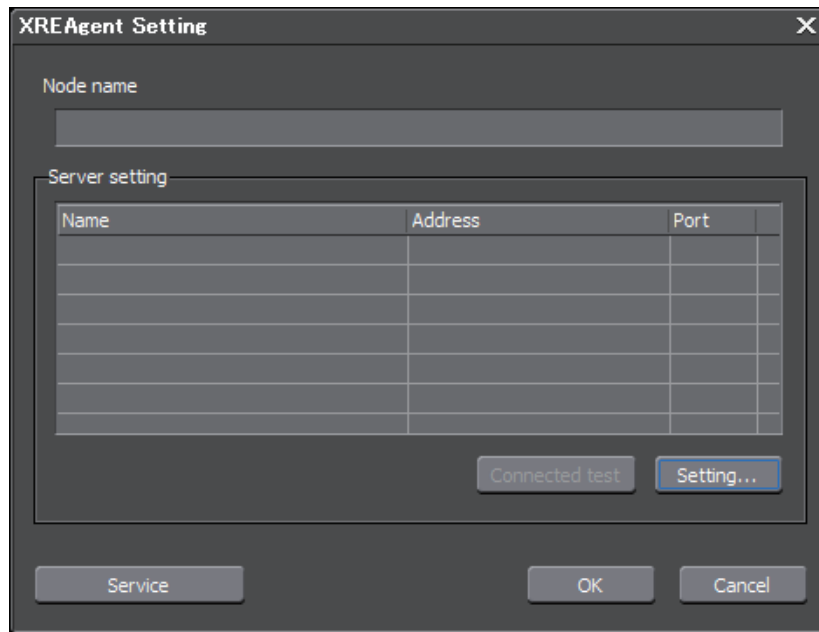
Note

- XREController is the configuration of the controller. If you have installed both the controller and the engine on a PC, you are able to select XREController on the XREAdminConsole.

Configuring the controller ► P26

2 Double-click on the GVRenderEngine icon.
The [GVRenderEngine setting] dialog box appears.

❖ **[GVRenderEngine setting] dialog box**

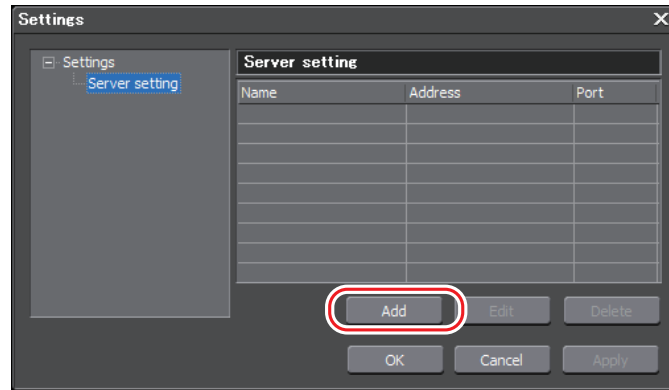


| | |
|------------------|---|
| Node name | Name of the engine. |
| Test | Connection test with the controller. |
| Setting | Manage the controllers. |
| Service | Open the service setting dialog on Windows. |

3 Enter the name of the engine in [Node name].
By default, the computer name of the PC is entered here. Change the name as necessary.

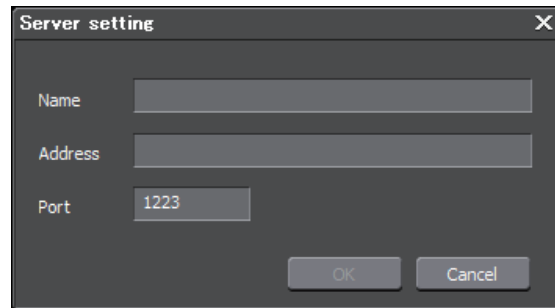
4 Click [Setting...].
The [Settings] dialog box appears.

5 Click [Add].



The [Server setting] dialog box appears.

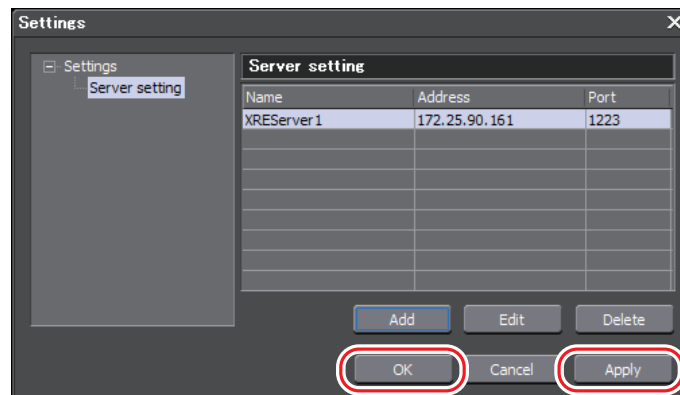
❖ [Server setting] dialog box



[Server setting] dialog box ► P29

6 Set each item, and then click [OK].

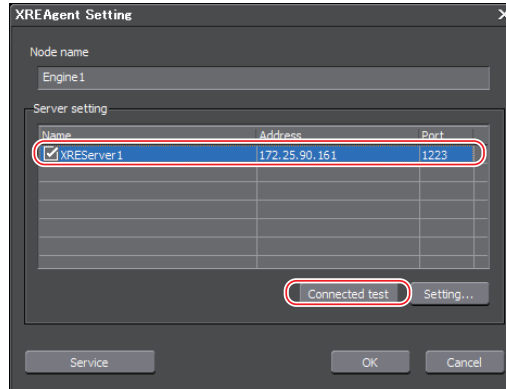
7 Click [Apply], and then click [OK].



POINT

- If you want to change any setting, select the controller to be changed from [Server setting] list and click [Edit].
- If you want to delete any setting, select the controller to be deleted from [Server setting] list and click [Delete].
- To add a destination, repeat steps 5 to 6.

8 Select the controller to be connected, and then click [Connected test].



The connection is complete if the [Success] message is displayed.

9 Click [OK].

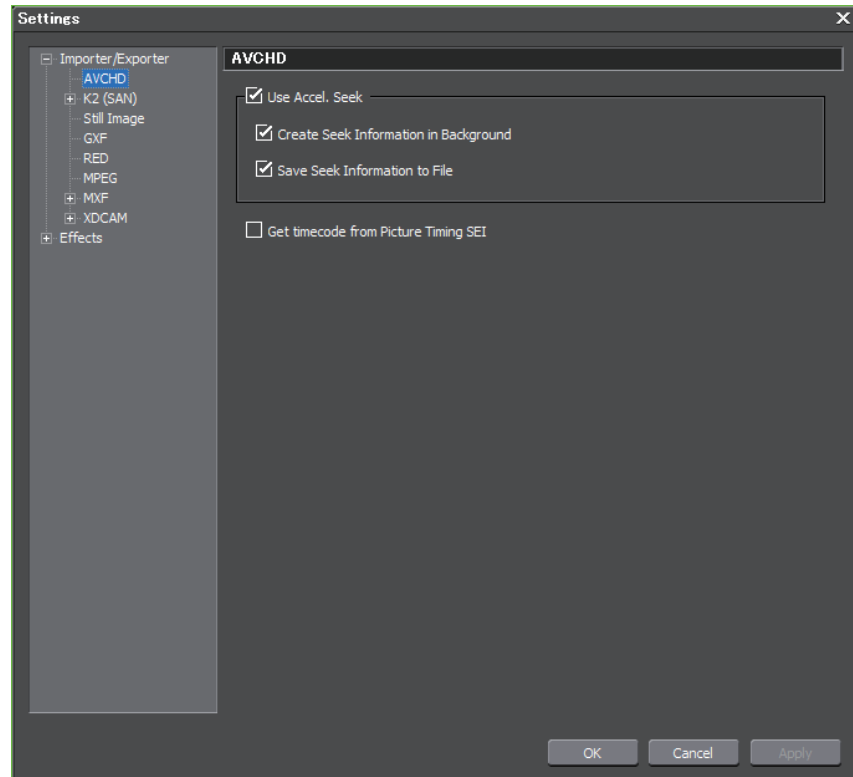
Plug-in settings

Configure the plug-in settings as necessary.

1 Double-click on the Plug-ins icon in the XREAdminConsole.

The [Plug-in settings] dialog box appears.

❖ [Plug-in settings] dialog box



For more information about the plug-in settings, see the EDIUS Reference Manual.

Note

- It is necessary that the plug-in environments on the EDIUS edit terminals and the controller/engine are all identical. If their plug-in environments are different, an error may occur or your data may not be exported properly.

2 Click the [Plug-in setting] tree, and then click an item to set.

3 Set each item, and then click [OK].

You can continue to configure other settings by clicking [Apply].

Configuring the client

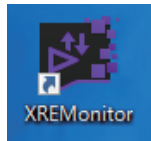
Configuring XRE Monitor (client mode)

On the EDIUS edit terminal to be used as an client, configure the connection settings to the controller.

The settings are also required when you are using only XRE Monitor on a PC where EDIUS is not installed.

Note • The destination controller must be started beforehand.
Configuring the controller ► P26

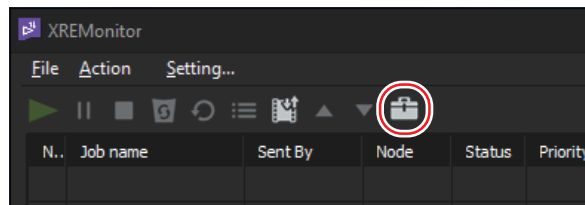
1 Double-click the XRE Monitor icon on the desktop.



Alternative

- Click the [start] menu, and then click [All Programs] > [Grass Valley] > [XREMonitor].

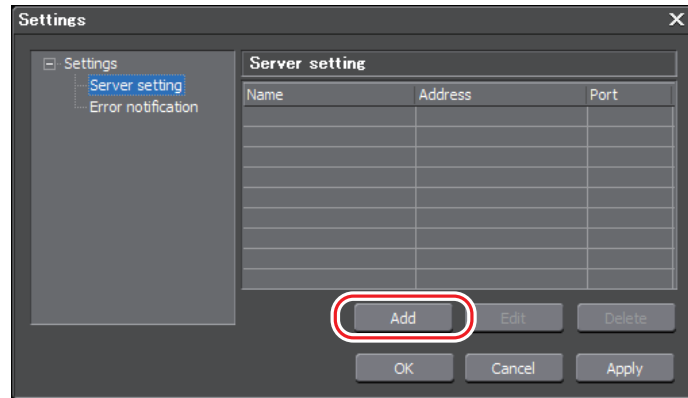
2 Click [Settings].



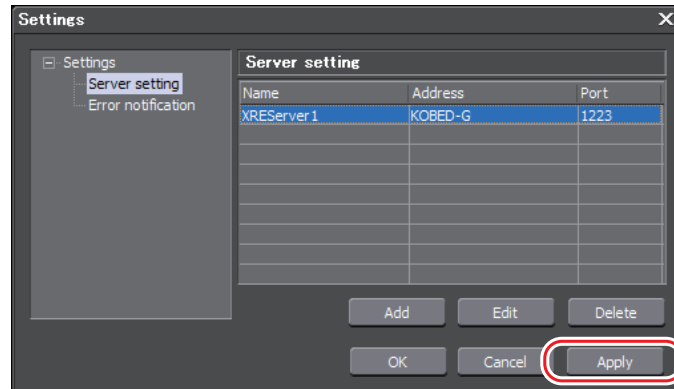
Alternative

- Click [Setting...] on the menu bar.

3 Click the [Settings] tree, and then click [Server setting].

4 Click [Add].

The [Server setting] dialog box appears.

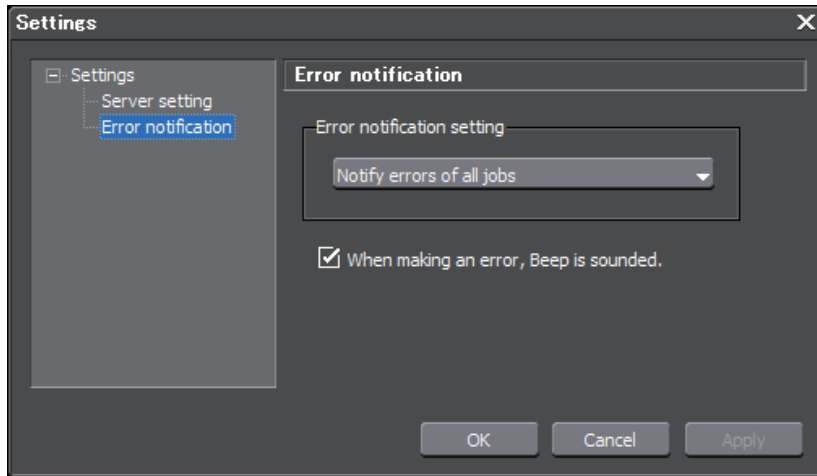
[Server setting] dialog box ► P29**5** Set each item, and then click [OK].**6** Click [Apply].**POINT**

- If you want to change any setting, select the controller to be changed from [Server setting] list and click [Edit].
- If you want to delete any setting, select the controller to be deleted from [Server setting] list and click [Delete].
- To add a destination, repeat steps 4 to 5.

Continue to configure [Error notification].

7 Click the [Settings] tree, and then click [Error notification].

❖ Error notification (client mode) dialog box



| | |
|---|---|
| Error notification setting | <p>From the list, choose the type of errors you will be notified of.</p> <p>If you choose [Notify errors of all jobs], you will be notified of errors related to all rendering jobs instructed by the controller to each engine.</p> <p>If you choose [Notify errors of my jobs], you will be notified of errors related to rendering jobs requested by this Client itself.</p> <p>If you choose [No error notification], no error notification will occur.</p> <p>About error notifications ► P45</p> |
| When making an error, Beep is sounded. | <p>Check this option to make a beep sound when delivering error notifications.</p> |

8 Set each item, and then click [OK].

EDIUS XRE Operations

Section 5

Note

- EDIUS XRE system does not work with the remote desktop that comes standard with Windows.
- Perform the initial settings of EDIUS XRE in advance according to Section 4 - EDIUS XRE Settings.
- The operation to store a rendering job from the previous version of EDIUS to EDIUS XRE which supports EDIUS 7 is not guaranteed. In addition, a rendering job cannot be stored from EDIUS 7 to the previous version of EDIUS XRE.

Requesting Rendering Jobs

Things to check when creating a project on an client

When you edit your EDIUS project file on an client, check the following points.

About the destination to save project files

The destination to save EDIUS XRE system's project files must be specified as a folder that can be referenced from any controller/engine/client PCs and whose address display is always the same in Explorer. For details on creating a project file, refer to EDIUS Reference Manual.

About the referenced location of sources used for editing

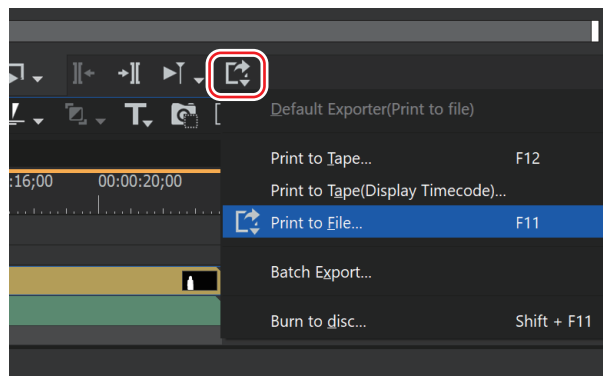
Individual clips (source files) to be placed on the timeline must be located in a folder that can be referenced from any controller/engine/client PCs and whose address display is always the same in Explorer. When storing a rendering job, if offline clips exist (including partial offline clips), the [Restore and transfer clip] dialog box appears. For details on restoring offline clips, refer to EDIUS Reference Manual.

Requesting a rendering job from an client

You can request the controller to perform a rendering job when exporting a project edited on an client (each EDIUS edit terminal).

- Note**
- Make sure that the controller/engine is started up.
Configuring the controller ► P26
Connection settings to the controller ► P31
 - While field editing, the rendering job cannot be stored from the project files of both checkout source and destination.

1 Click [Export] in Recorder, and then click [Print to File].



The [Print to File] dialog box appears.

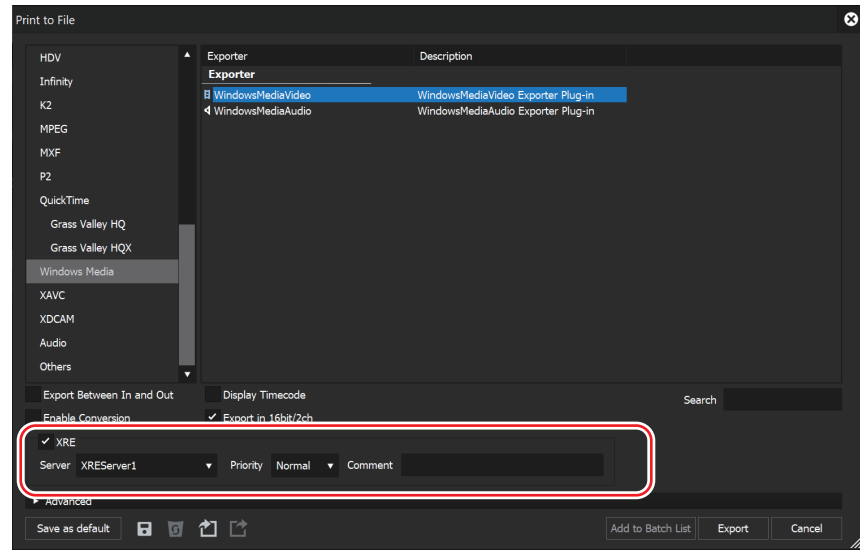
Alternative

- Click [File] on the menu bar, and then click [Export] > [Print to File].
- Print to File: **[F11]**

2 Select an exporter and configure the export setting.

For details on exporting to file, refer to EDIUS Reference Manual.

3 Check [XRE] to configure [Server] and [Priority].



| | |
|-----------------|--|
| Server | Click the list to choose the controller to which your rendering job request will be sent. |
| Priority | Choose the priority from [High], [Normal], or [Low] in terms of the order to perform rendering jobs. If you set the higher priority setting, the rendering job will be processed with higher priority. |
| Comment | Enter a comment here. |

POINT

- If the name of the controller is not displayed in [Server], configure the controller again.
Configuring XRE Monitor (management mode) ► P28
Configuring XRE Monitor (client mode) ► P36

4 Click [Export].

5 Set the exported items.

The settings will be different depending on the exporter.

6 Enter the file name, specify the export destination, and then click [Save].

Note

- The export destination must be specified as a folder that can be referenced from any controller/engine/client PCs and whose address display is always the same in Explorer.

Start rendering. The progress of the rendering job can be checked in XRE Monitor.

Checking job status ► P42

POINT • You can store preset exporters that contain EDIUS XRE related settings. For details on the preset exporter, refer to EDIUS Reference Manual.

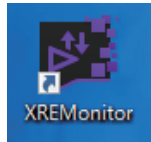
XRE Monitor Operations

XRE Monitor is software for checking the progress of rendering jobs and job history.

If it is started on the controller, the "management mode" is enabled and if it is started on an client, the "client mode" is enabled. The "management mode" allows you to sort the order to perform rendering jobs.

Checking job status

- 1 Double-click the XRE Monitor icon on the desktop.

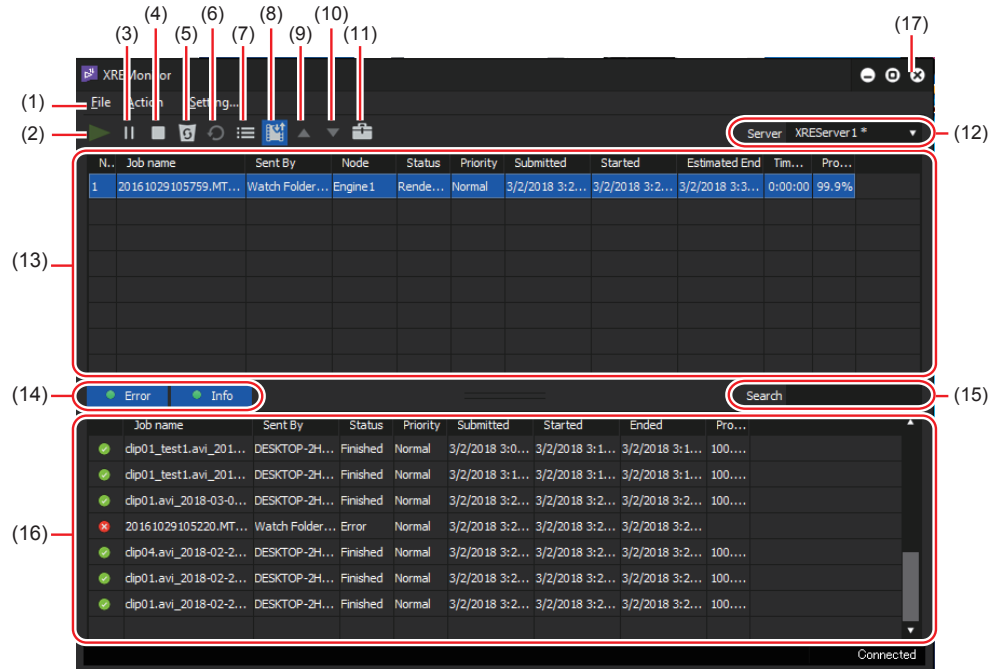


If XRE Monitor is already started and the XRE Monitor icon is in the task tray, right-click on the icon and then click [Open XRE Monitor].



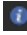
Alternative

- Click the [start] menu, and then click [All Programs] > [Grass Valley] > [XREMonitor].

❖ [XRE Monitor] dialog box



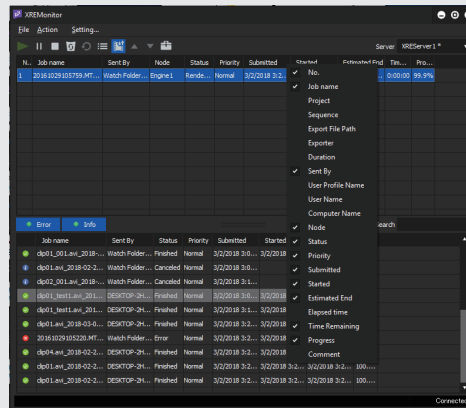
| | |
|---|--|
| (1) Menu bar | The menu bar also allows you to perform the operations from (2) to (11) in the table. |
| (2) Restart* | Click this button to restart a job after selecting a paused or stopped job from the [Job List (above)]. |
| (3) Pause* | Pauses the job you selected from the [Job List (above)]. |
| (4) Stop* | Stops the job you selected from the [Job List (above)]. |
| (5) Cancel* | Cancels the job you selected from the [Job List (above)]. The canceled job will move to the [Job List (below)]. |
| (6) Retry* | Performs the job you selected from the [Job List (below)] again. |
| (7) Property | Shows the properties of the job you selected from the [Job List (above)] or [Job List (below)]. Checking job properties ►P46 |
| (8) Change job order (management mode only) | Turns on/off the job sorting. Sorting the order to perform jobs in XRE Monitor (management mode) ►P47 |

| | |
|---|---|
| <p>Up (9) (management mode only)</p> | <p>Moves up the order to perform the job you selected from the [Job List (above)]. Sorting the order to perform jobs in XRE Monitor (management mode) ► P47</p> |
| <p>Down (10) (management mode only)</p> | <p>Moves down the order to perform the job you selected from the [Job List (above)]. Sorting the order to perform jobs in XRE Monitor (management mode) ► P47</p> |
| <p>(11) Settings</p> | <p>Configure settings in [Server setting] and [Error notification]. Configuring XRE Monitor (management mode) ► P28 Configuring XRE Monitor (client mode) ► P36</p> |
| <p>(12) Server</p> | <p>The currently connected controller is displayed. Clicking the list shows the list of the controllers stored as destinations, which allows you to switch the controller to check job status.</p> |
| <p>(13) Job List (above)</p> | <p>Shows the active jobs and jobs waiting to be performed.</p> |
| <p>(14) Error / Info</p> | <p>Choose the job history types to be shown. To show all of the job history, click both of them.</p> <p>Error Click this to show only jobs in which errors occurred.</p> <p>Info Click this to show jobs in which no error occurred (successful and canceled ones).</p> |
| <p>(15) Search</p> | <p>Enter a keyword to narrow down the search result of the [Job List (below)].</p> |
| <p>(16) Job List (below)</p> | <p>Shows the history of the performed jobs. A successful job is shown with , a job in which an error occurred is shown with , and a canceled job is shown with .</p> <p>The number of days to keep the history can be configured on the XRE Management Server. Configuring the controller ► P26</p> |
| <p>(17) Close</p> | <p>Closes the [XRE Monitor] dialog box.</p> |

*In the client mode, only the operations for jobs requested by the client itself are enabled.

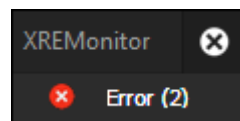
POINT

- If [Change job order] is turned off, every click on an item name in the [Job List (above)] can sort the rendering jobs in ascending or descending order. Sorting is not available if [Change job order] is turned off. Sorting is available in the [Job List (below)] whether [Change job order] is turned on or off.
- Displayed items can be customized. Right-click on an item name, and then check the item(s) to display.




About error notifications

If an error occurs during a rendering process, each PC will be notified of the error through XRE Monitor. An error message appears near the task tray.



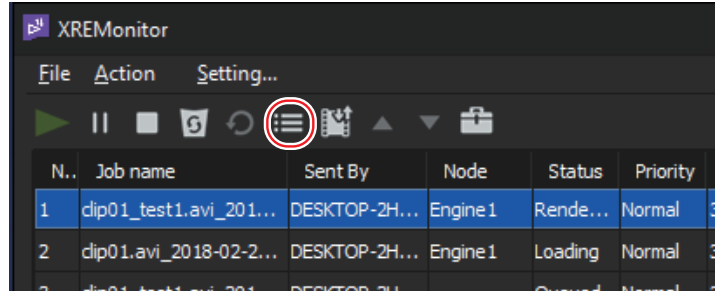
If you click the error message, it disappears.

POINT

- You can check the type of errors you will be notified of and change it.
Configuring XRE Monitor (management mode) ▶ P28
Configuring XRE Monitor (client mode) ▶ P36
- You will not be notified of error details. You can check them in the [Job List (below)] of the [XRE Monitor] dialog box. A job in which an error occurred is shown with .
[XRE Monitor] dialog box ▶ P43

Checking job properties

- 1 Select a job from the [Job List (above)] or [Job List (below)], and then click [Property].

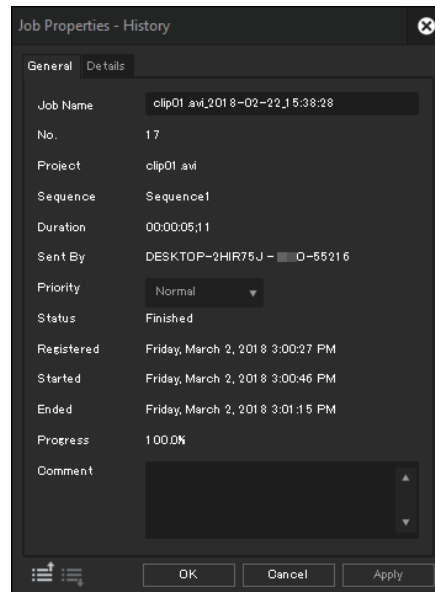


Alternative

- Select a job from the [Job List (above)] or [Job List (below)], and then click [Action] > [Property] from the menu bar.
- Select a job from the [Job List (above)] or [Job List (below)], right-click on it, and then click [Property].
- Double-click a job in the [Job List (above)] or [Job List (below)].

❖ [Job Properties]

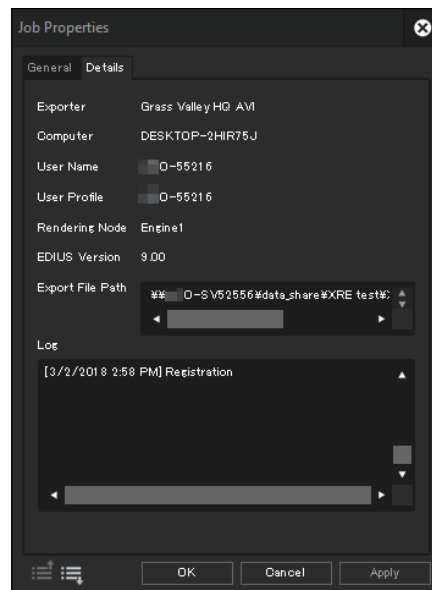
➤ [General] tab





POINT

- You can configure the [Job Name], [Priority], and [Comment] settings for a job in the [Job List (above)].
- In XRE Monitor (management mode), you can change the [Job Name], [Priority], and [Comment] settings for all jobs. On an client, you can only change the [Job Name], [Priority], and [Comment] settings for jobs requested by the client itself.
- Properties of a job in the [Job List (below)] cannot be changed. When viewing properties of a job in the [Job List (below)], [History] appears in the dialog box caption.

➤ [Details] tab



You can view the properties of the next upper or lower job from the currently displayed one by clicking  or .

Sorting the order to perform jobs in XRE Monitor (management mode)

Note

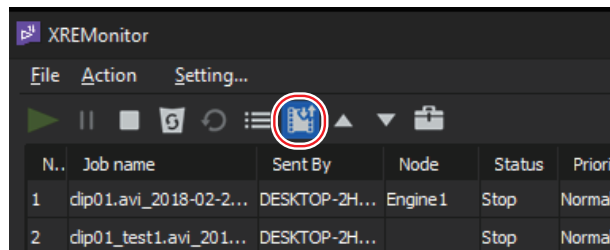
- The order to perform jobs cannot be sorted in XRE Monitor (client mode).

1 Click [Change job order] to turn it on.

Every click switches on and off.

If it is turned on, job sorting is enabled. If it is turned off, sorting operations are disabled and the icon is displayed with a diagonal line.

Ex. When turned off:

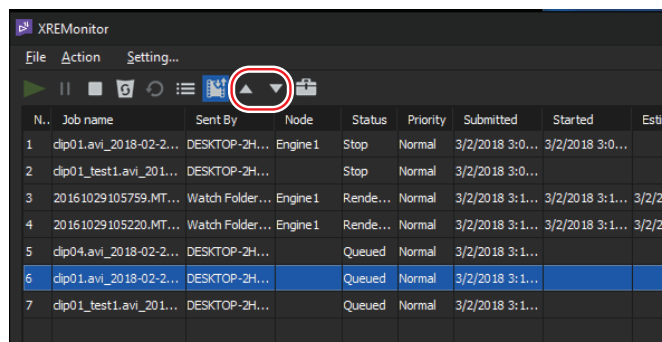


POINT • If job sorting is enabled, jobs are sorted by the order in which they are performed.

Alternative

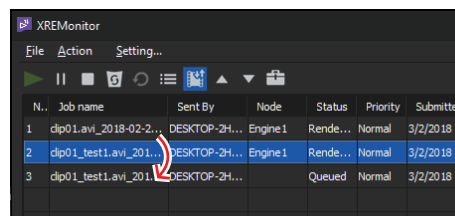
- Click [Action] > [Change job order] from the menu bar. A check mark appears if job sorting is enabled.
- Right-click on a job in the [Job List (above)] or [Job List (below)], and then click [Change job order]. A check mark appears if job sorting is enabled.

2 Select a job from the [Job List (above)], and then click either [Up] or [Down].



Alternative

- Select a job from the [Job List (above)], and then click [Action] > [Up] or [Down] from the menu bar.
- Select a job from the [Job List (above)], right-click on it, and then click [Up] or [Down].
- Select a job from the [Job List (above)], and then drag and drop the job in the upper or lower direction.



Troubleshooting

Troubleshooting

❖ If any rendering job does not start, check the following items:

Has the controller and engine been running?

Configuring the controller ▶ P26

Configuring the engine ▶ P31

Are your source files located on a network-connected PC (not a local PC)?

Things to check when creating a project on an client ▶ P39

**Is the same server selected on the client and engine?
(If more than one controller is stored.)**

Connection settings to the controller ▶ P31

Configuring XRE Monitor (client mode) ▶ P36
