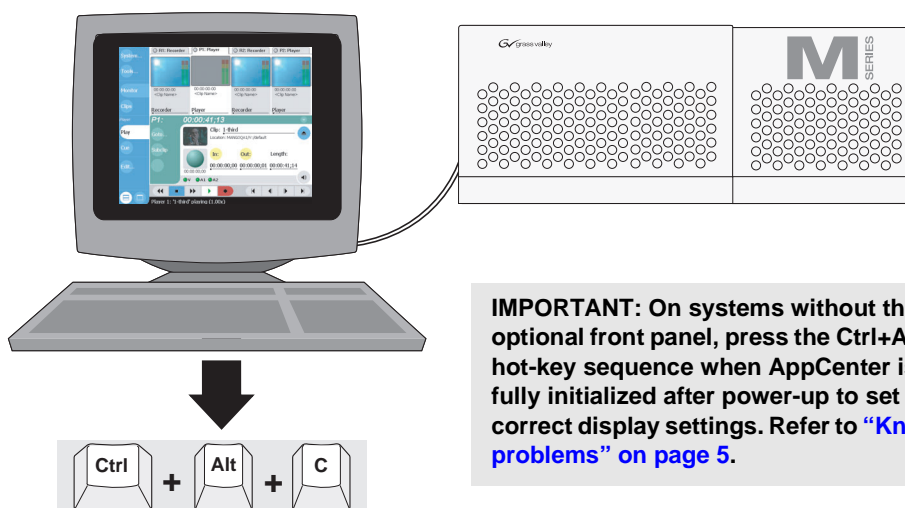


M-Series iVDR Version 1.5.1 Release Notes

Table of Contents

Grass Valley Product Support.....2
 Features not implemented in this release.....3
 Player3
 Playlist.....3
 Clips Pane3
 Configuration application.....3
 GPI trigger.....3
 AppCenter3
 Miscellaneous.....3
 Operational considerations.....4
 Sending files to DVD or CD removable media4
 Using USB devices4
 Verifying clip transfer rate before playing.....4
 Composite analog video input performance4
 Remote control protocol support4
 Known problems.....5
 VGA monitor display settings.....5
 Clips Pane5
 Player5
 Playlist.....5
 Configuration6
 Virus software support6
 Performing critical Windows updates.....6
 Part 1: Start the iVDR in Windows Safe Mode.....6
 Part 2: Install critical updates.....7

IMPORTANT: VGA Display ‘hot-key’ sequence



IMPORTANT: On systems without the optional front panel, press the Ctrl+Alt+C hot-key sequence when AppCenter is fully initialized after power-up to set the correct display settings. Refer to “Known problems” on page 5.

Grass Valley Product Support

To get technical assistance, check on the status of problems, or report new problems, contact Grass Valley Product Support via e-mail, the Web, or by phone or fax.

Web Technical Support

To access support information on the Web, visit the product support Web page on the Grass Valley Web site. You can download software or find solutions to problems by searching our Frequently Asked Questions (FAQ) database.

World Wide Web: <http://www.thomsongrassvalley.com/support/>
Technical Support E-mail Address: gvgtechsupport@thomson.net.

Phone Support

Use the following information to contact product support by phone during business hours. Afterhours phone support is available for warranty and contract customers.

USA and Americas (includes Latin America and Canada)

Telephone (800) 547-8949 (Toll Free)
(530) 478-4148 (Direct Dial Toll Call)
Fax (530) 478-3181

Europe and UK

UK Regional Service Location	Tel +44 1753 218 777 Fax +44 1753 218 757	Italy	Tel +39 72 901 428 Fax +39 72 905 371
France	Tel +33 145 297 300 Fax +33 145 297 302	Germany	Tel +49 221 1791 234 Fax +49 221 1791 235

Asia Pacific

Australia	Tel (612) 8877 6800 Fax (612) 8877 6825	India	Tel (91) 11 373 0544 Fax (91) 11 373 0543
China	Tel (86) 10 6235 1185 Fax (86)10 6235 1190	Japan	Tel (813) 5484 6869 Fax (813) 5484 3775
Hong Kong	Tel (852)-2531-3000 Fax (852)-2802-2996	South East Asia	Tel (65) 7328 729 Fax (65)7327 649

Authorized Support Representative

A local authorized support representative may be available in your country. To locate the support representative for your country, visit the product support Web page on the Grass Valley Web site (<http://www.thomsongrassvalley.com/support>).

Features not implemented in this release

The following features are not implemented in the 1.5.1 release of the M-Series iVDR software. These features will be supported in future releases.

Player

- **Playing playlists** - Player does not support playing playlists, however, you can use the Playlist application to save the playlist as a program, and then play the program in Player.
- **Saving clip audio levels** - Changes to clip audio levels are not saved.

Playlist

- **Opening Event view while playing a list** - You must stop playing the playlist before you can open the Event view.
- **Copy and Paste** - Copy, cut, and paste functionality are not implemented in Playlist. You can use either drag and drop or menu/button operations instead.

Clips Pane

The Clips pane is used to manage media— rename, delete, copy, move media, search, and find linked assets. The following Clips pane features are not yet supported.

- **Sending playlists or programs** – Sending playlists or programs to a file or stream is not supported in this release.
- **Importing playlists or programs** – Importing playlists or programs from a file or stream is not supported in this release.

Configuration application

- **Signal status indicators** - The VITC Present and Audio Clip indicators in the Configuration dialog box do not function. VITC present is always green, and Audio Clip is always gray.

GPI trigger

- **GPI I/O is not supported in this release.**

AppCenter

- **(V)(A1)(A2) signal status indicators** - The video and audio signal status indicators in AppCenter (the main M-Series iVDR user interface) are not functional in this release.

Miscellaneous

- **Keyboard shortcuts** - Keyboard shortcuts for transport controls (play/record/FF/rewind) are not implemented.

Operational considerations

Use the following information in your operational planning for the iVDR.

Sending files to DVD or CD removable media

Consider the following information before using DVD or CD removable media. Also refer to the *M-Series iVDR User Manual* for more information.

- **Choosing DVD media** - You may experience considerably longer write times when using DVD-RW media compared to other types, such as +RW, -R, or +R.
- **Estimating clip file sizes** - AppCenter, the main iVDR control application, does not prevent you from sending a file that is larger than the space available on the target disk. The transfer fails when the disk becomes full. The space written to on +R/-R disk types becomes unusable. To avoid this problem, check the clip size reported in the clip properties dialog box. You can use this to estimate the disk space required for the clip.

Using USB devices

The USB connectors on the rear panel and front panel can be used to connect a mouse, keyboard, USB drive, or other USB device. Do not plug or unplug these devices while the iVDR is being used for critical play to air activity.

Verifying clip transfer rate before playing

Before playing a clip that is being imported from a file or stream, verify that the clip transfer rate is higher than the clip data rate using the Transfer Monitor. This is required to prevent playback problems.

Composite analog video input performance

The iVDR can record signals from most non-timebase corrected signal sources such as color under video playback devices, i.e. VHS or U-Matic VTRs, and low cost cameras. However, for reliable recording performance some devices may require external signal conditioning products, i.e. timebase correction.

Remote control protocol support

You can use remote control devices and automation software developed for the M-Series iVDR that use industry-standard serial protocols. For each supported protocol, the iVDR provides a protocol-specific application. Be sure to contact your 3rd party automation system or software provider to ensure that the iVDR supported.

Contact your sales representative for a list companies that provide certified applications for the M-Series iVDR.

Known problems

The following limitations are present in this M-Series iVDR Software 1.5.1 release. If you wish to obtain more information about these limitations, please mention the reference numbers that follow the description of each limitation. These known problems will be resolved in future releases.

VGA monitor display settings

- Problem** The Windows desktop is oversized and scrolls as you move the mouse. The display adapter card in the iVDR always starts in 640x480 mode even though the Windows screen size is set to 800x600.
- Workaround** Press the **CTRL+ALT+C** hot-key sequence when AppCenter is fully initialized after power-up to switch the display adapter card to 800x600 display settings. If you inadvertently select this key sequence on an iVDR with a front panel, press **CTRL+ALT+F** hot-key sequence to return to 640x480 display settings which is required for front panel operation.

Clips Pane

- Problem** Sending a clip to CD or DVD media using the AVI file format appears to succeed, but the AVI file is not usable.
- Workaround** Send the clip to the 'D:' partition on the M-Series iVDR system drive, then use Windows Explorer to copy the file to the CD or DVD media.

Player

- Problem** Cannot loop play a clip that is being recorded. (CR38574)
- Workaround** After recording is stopped, eject the clip from Player, then reload it.

Playlist

- Problem** Playing the same playlist on both play channels at the same time can cause improper playout. (CR37647)
- Workaround** Save the playlist as a program, then play it out using Player. Alternatively, you can copy the playlist in the Clips Pane and give it a different name.
- Problem** The time needed to simultaneously load multiple clips into a list will increase with the number of clips when Playlist is in image view. For a large number of clips, the iVDR user interface may appear unresponsive. (CR37884)
- Workaround** Change Playlist to Text view when simultaneously loading large numbers of clips.

- | | |
|------------|---|
| Problem | Removing the section while playing an event belonging to that section causes Playlist to become unresponsive to user input. (CR38686) |
| Workaround | Do not remove a section that is currently playing. Skip to another section or stop playout before removing the section. |

Configuration

- | | |
|------------|---|
| Problem | Play channel Still-Play Mode setting has no affect. Still-Play mode is always set to Field (Line-interpolated). (CR37506) |
| Workaround | None. |

Virus software support

Thomson Grass Valley does not recommend installing third party software on your iVDR. If you must install virus scanning software, configure it for manual virus scan only. Automatic virus scanning could disrupt iVDR operation and should not be used.

Performing critical Windows updates



CAUTION: Only critical Windows updates should be installed. Do not install other Windows 2000 or driver updates on your iVDR unless instructed by procedures in these release notes. “Critical” updates must be installed manually using the Windows Update program.

From the factory, Automatic Windows Updates are disabled. This prevents updates from being performed in a manner that could harm the operation of networked iVDRs. Do not modify the Automatic Update setting.

Part 1: Start the iVDR in Windows Safe Mode

Starting the iVDR in safe mode prevents the update program from using the media drives as the target for downloading and installing windows updates.

To start Windows in safe mode:

1. Connect a keyboard and mouse to the iVDR rear panel or front panel.
You'll need these to boot in Safe mode and use Windows Update program.
2. Shutdown AppCenter as follows:
 - a. In the AppCenter toolbar, select **System | Shutdown**.
 - b. In the Shutdown dialog, select **Exit to Windows**, then **OK**.AppCenter closes, and the desktop appears.
3. In the Windows taskbar, select **Start**, then **Shut Down**.
4. Select **Restart**, and then **OK**.
Windows will shutdown, and restart.
5. As Windows starts, watch for the message Please select the operating system to start, then press **F8**.

NUM LOCK must be off before the arrow keys on the numeric keypad will function.

6. Use the arrow keys to highlight the **Safe Mode with Networking** option, and then press **ENTER**.

Windows starts in Safe mode.

7. Click **OK** in the Safe mode warning message.

Part 2: Install critical updates

If your iVDR has internet access, you can use the Windows 2000 Update feature to scan your iVDR to determine if any critical updates are required. Afterward, you can download and install those updates manually.

To scan and install critical updates:

1. In the Windows taskbar, click **Start**, then **Windows Update**.

Internet Explorer opens and connects to the Windows update web site.

2. Click **Scan for updates**. Wait for the scan to complete.

3. If there are critical updates required for your iVDR, follow the instructions on the web page to install them.



CAUTION: Only critical Windows updates should be installed. Do not install other Windows 2000 or driver updates on your iVDR unless instructed by procedures in these release notes.

Copyright © 2003 Thomson Broadcast and Media Solutions, Inc. All rights reserved. Printed in the United States of America.

This document may not be copied in whole or in part, or otherwise reproduced except as specifically permitted under U.S. copyright law, without the prior written consent of Thomson Broadcast and Media Solutions, Inc., P.O. Box 59900, Nevada City, California 95959-7900

Grass Valley, M-Series, Profile, and Profile XP are either registered trademarks or trademarks of Thomson Broadcast and Media Solutions, Inc. in the United States and/or other countries. Other trademarks used in this document are either registered trademarks or trademarks of the manufacturers or vendors of the associated products. Thomson Broadcast and Media Solutions, Inc. products are covered by U.S. and foreign patents, issued and pending. Additional information regarding Thomson Broadcast and Media Solutions, Inc.'s trademarks and other proprietary rights may be found at www.thomsongrassvalley.com.

Product options and specifications subject to change without notice. The information in this manual is furnished for informational use only, is subject to change without notice, and should not be construed as a commitment by Thomson Broadcast and Media Solutions, Inc. Thomson Broadcast and Media Solutions, Inc. assumes no responsibility or liability for any errors or inaccuracies that may appear in this publication.