

# M-Series iVDR Version 1.5.12 Release Notes

## Table of Contents

*IMPORTANT: VGA Display ‘hot-key’ sequence* ..... 1

*Grass Valley Product Support*..... 2

*New features in version 1.5.12* ..... 3

*Features not implemented in version 1.5.12* ..... 3

*Operational considerations*..... 4

*Installing software version 1.5.12* ..... 6

*Known problems*..... 8

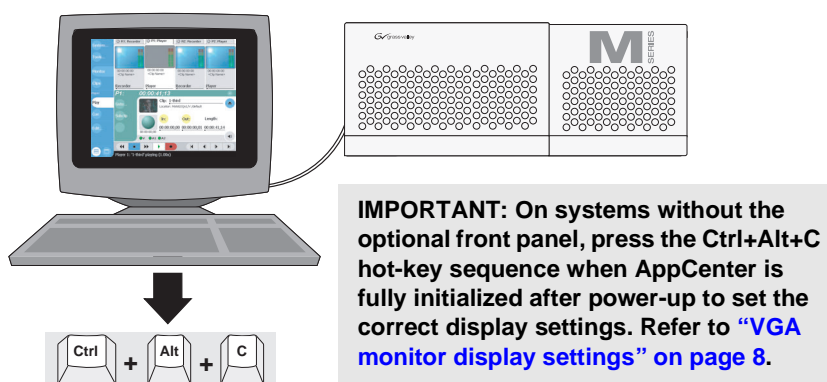
*Using Advanced Search*..... 10

*Saving a list as a program*..... 11

*Virus software support* ..... 12

*Performing critical Windows updates*..... 12

## IMPORTANT: VGA Display ‘hot-key’ sequence



**IMPORTANT: On systems without the optional front panel, press the Ctrl+Alt+C hot-key sequence when AppCenter is fully initialized after power-up to set the correct display settings. Refer to “VGA monitor display settings” on page 8.**

Copyright © 2003 Thomson Broadcast and Media Solutions, Inc. All rights reserved. Printed in the United States of America.

This document may not be copied in whole or in part, or otherwise reproduced except as specifically permitted under U.S. copyright law, without the prior written consent of Thomson Broadcast and Media Solutions, Inc., P.O. Box 59900, Nevada City, California 95959-7900

Grass Valley, M-Series, Profile, and Profile XP are either registered trademarks or trademarks of Thomson Broadcast and Media Solutions, Inc. in the United States and/or other countries. Other trademarks used in this document are either registered trademarks or trademarks of the manufacturers or vendors of the associated products. Thomson Broadcast and Media Solutions, Inc. products are covered by U.S. and foreign patents, issued and pending. Additional information regarding Thomson Broadcast and Media Solutions, Inc.'s trademarks and other proprietary rights may be found at [www.thomsongrassvalley.com](http://www.thomsongrassvalley.com).

Product options and specifications subject to change without notice. The information in this manual is furnished for informational use only, is subject to change without notice, and should not be construed as a commitment by Thomson Broadcast and Media Solutions, Inc. Thomson Broadcast and Media Solutions, Inc. assumes no responsibility or liability for any errors or inaccuracies that may appear in this publication.

## Grass Valley Product Support

To get technical assistance, check on the status of problems, or report new problems, contact Grass Valley Product Support via e-mail, the Web, or by phone or fax.

### Web Technical Support

To access support information on the Web, visit the product support Web page on the Grass Valley Web site. You can download software or find solutions to problems by searching our Frequently Asked Questions (FAQ) database.

**World Wide Web:** <http://www.thomsongrassvalley.com/support/>  
**Technical Support E-mail Address:** [gvgtechsupport@thomson.net](mailto:gvgtechsupport@thomson.net).

### Phone Support

Use the following information to contact product support by phone during business hours. Afterhours phone support is available for warranty and contract customers.

#### USA and Americas (includes Latin America and Canada)

Telephone (800) 547-8949 (Toll Free)  
(530) 478-4148 (Direct Dial Toll Call)  
Fax (530) 478-3181

#### Europe and UK

UK Regional Service Location	Tel +44 1753 218 777 Fax +44 1753 218 757	Italy	Tel +39 72 901 428 Fax +39 72 905 371
France	Tel +33 145 297 300 Fax +33 145 297 302	Germany	Tel +49 221 1791 234 Fax +49 221 1791 235

#### Asia Pacific

Australia	Tel (612) 8877 6800 Fax (612) 8877 6825	India	Tel (91) 11 373 0544 Fax (91) 11 373 0543
China	Tel (86) 10 6235 1185 Fax (86)10 6235 1190	Japan	Tel (813) 5484 6869 Fax (813) 5484 3775
Hong Kong	Tel (852)-2531-3000 Fax (852)-2802-2996	South East Asia	Tel (65) 7328 729 Fax (65)7327 649

### Authorized Support Representative

A local authorized support representative may be available in your country. To locate the support representative for your country, visit the product support Web page on the Grass Valley Web site (<http://www.thomsongrassvalley.com/support>).

## New features in version 1.5.12

Version 1.5.12 introduces the following software features to extend the capabilities of the M-Series iVDR.

- **Saving a playlist as a program** - A *program* is generated from a playlist using the new **Save As Program** feature in the Playlist application. A program includes all the media in the playlist, but does not include any event that breaks the flow of playout such as a pauses between events. You can insert programs into other playlists, or load and play them using the standard Player application. You can also send a program to a GXF file or a video network stream. See [“Saving a list as a program” on page 11](#) for more information.
- **Transferring playlists and programs** - You can transfer playlists and programs by file or network stream.
- **Saving clip and event audio levels** - You can save the audio level changes you make to a clip or an event in a list. After changing the audio level, click the **Save** button next to the audio level controls. Event audio levels are saved independent of the source clip. The saved audio level is used every time the clip or list is loaded. Unsaved changes are discarded when the clip or playlist is ejected.
- **Advanced Search** - Advanced search mode provides an extended set of attributes that you can use for locating assets anywhere in the iVDR media storage. Refer to [“Using Advanced Search” on page 10](#).
- **Freeze on next event** - Playlist sections and events can be configured to pause on the first frame of the next event. In operation, there is a momentary pause on the last frame of the current event, then a pause on the first frame on the next event.
- **Configuration dialog box enhancements** - The following selections take immediate effect before closing the Configuration dialog: Video Input, VITC Reader. In addition, the VITC present indicator is functional.

## Features not implemented in version 1.5.12

The following features are not implemented in the 1.5.12 release of the M-Series iVDR software. These features will be supported in future releases.

### GPI trigger

GPI I/O is not supported in this release.

### Keyboard shortcuts

Keyboard shortcuts for transport controls (play/record/FF/rewind) are not implemented.

## Operational considerations

Use the following information in your operational planning for the iVDR.

### Minimum record to playback time

To play a clip that is still recording, start record, then **wait at least 5 seconds before starting playback**. Violating the 5 second minimum record to play time results in freeze frames and intermittent audio. This could happen inadvertently while using the transport controls. See also [“Problems playing a clip that is still recording” on page 8](#).

### Composite analog video input performance

The iVDR can record signals from most non-timebase corrected signal sources such as color under video playback devices, i.e. VHS or U-Matic VTRs, and low cost cameras. However, for reliable recording performance some devices may require external signal conditioning products, i.e. timebase correction.

### Remote control protocol support

You can use remote control devices and automation software developed for the M-Series iVDR that use industry-standard serial protocols. For each supported protocol, the iVDR provides a protocol-specific application. Be sure to contact your 3rd party automation system or software provider to ensure that the iVDR is supported.

Contact your Thomson Grass Valley sales representative for a list companies that provide certified applications for the M-Series iVDR.

### Using USB devices

The USB connectors on the rear panel and front panel can be used to connect a mouse, keyboard, USB drive, or other USB device. Do not plug or unplug these devices while the iVDR is being used for critical play to air activity.

### Sending files to DVD or CD removable media

Consider the following information before using DVD or CD removable media. Also refer to the *M-Series iVDR User Manual* for more information.

- **Choosing DVD media** - You may experience considerably longer write times when using DVD-RW media compared to other types, such as +RW, -R, or +R.
- **Estimating clip file sizes** - AppCenter, the main iVDR control application, does not prevent you from sending a file that is larger than the space available on the target disk. The transfer fails when the disk becomes full. The space written to on +R/-R disk types becomes unusable. To avoid this problem, check the clip size reported in the clip properties dialog box. You can use this to estimate the disk space required for the clip.
- **Best transfer performance** - File transfers to the DVD or CD drives are handled concurrently, up to four at a time. Additional transfer requests are queued. To enhance transfer performance, you may try limiting transfers to one at a time.

## **Maximum file sizes when exporting assets**

Exporting assets with long durations may result in file sizes that exceed 4GB. Some disk file systems are limited to file sizes of less than 4GB. Some USB drives are formatted using FAT/FAT32 which has the 4GB maximum file size limitation. Attempting to send a file to these disk volumes will cause the transfer operation to fail. Disk volumes formatted using NTFS allow larger maximum file sizes.

Before exporting an asset, be sure to check that the file size is less than 4GB, otherwise, ensure that the file system on the target drive supports larger files sizes.

## **Verifying clip transfer rate before playing**

Before playing a clip that is being imported from a file or stream, verify that the clip transfer rate is higher than the clip data rate using the Transfer Monitor. This is required to prevent playback problems.

## **AVI file encoding requirements for importing**

Before importing an AVI file, make sure it meets the following encode requirements.

AVI file encoding requirements:

- Video Compression - DV25
- Color sampling - 4:1:1 (525 Line NTSC); 4:2:0 (625 Line PAL)
- Resolution - 720 X480 (525), or 720 X 576 (625)
- Frame Rate 29.97Hz - (525 Line), or 25Hz (625 Line)
- Audio Sampling - 16bit PCM, 48Khz sample rate, stereo

## Installing software version 1.5.12

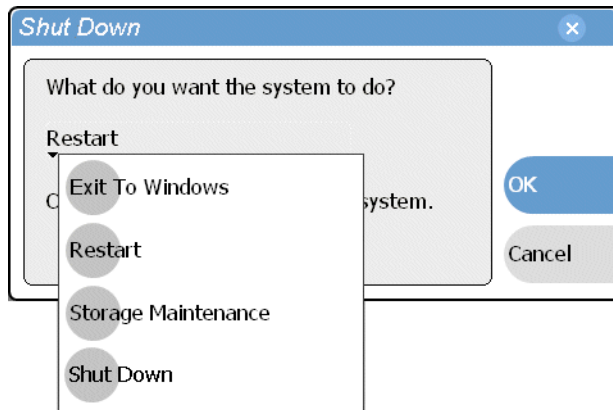
This software installation procedure includes:

- “Part 1: Install M-Series system software” on page 6
- “Part 2: Update the XML parser software” on page 7
- “Part 3: Create a system disk image file” on page 7

### Part 1: Install M-Series system software

To install system software version 1.5.12:

1. Exit AppCenter as follows:
  - a. In the AppCenter toolbar, select **System**, then choose **Shut Down** in the pop-up menu.  
The Shut Down dialog box appears.



- b. In the Shut Down dialog box, choose **Exit to Windows** in the drop-down list, then select **OK**.
2. Insert the *M-Series iVDR System Software* CD-ROM in the CD-ROM reader or connect to a network drive containing the downloaded software.
  3. Run *setup.exe*.

You can click **Start | Run** in the Windows taskbar, and then use **Browse** to locate and select the *setup.exe* file at the root level of the CD-ROM or the download directory, then click **OK** to start installation.
  4. In the Welcome dialog box, click **Next**, then follow onscreen instructions to install software.

**NOTE: Be sure to install the software in the default *c:\profile* directory. Do not change it. Specifying another location will result in incorrect operation of the software.**

5. After clicking **Finish** to close the install wizard, click **Yes**, to reboot the iVDR.  
After Windows initializes, AppCenter automatically starts.
6. Proceed to part 2 of this procedure.

## Part 2: Update the XML parser software

Use this procedure to update the Microsoft XML parser software to version 4.0 SP2. You can access the installation program on the *M-Series iVDR Software* CD-ROM or download it from <http://www.thomsongrassvalley.com/downloads/>.

To update the XML parser software:

1. Exit AppCenter as follows:
  - a. In the AppCenter toolbar, select **System**, then choose **Shut Down** in the pop-up menu.  
The Shut Down dialog box appears.
  - b. In the Shut Down dialog box, choose **Exit to Windows** in the drop-down list, then select **OK**.
2. Insert the *M-Series iVDR System Software* CD-ROM in the CD-ROM reader or connect to a network drive containing the downloaded software.
3. Use Windows Explorer to locate and run the *msxml.msi* installation file located in the XML folder on the CD-ROM, or in your download directory.  
The installation wizard Welcome page is displayed.
4. On the Welcome page, click **Next**, then follow the onscreen instructions to install the software. Use the **Install Now** option when asked.

**NOTE:** Do not modify the *Customer Information* text page when it is displayed.

5. Click **Finish** to close the installation wizard. The M-Series iVDR upgrade is complete.
6. Proceed to part 3 of this procedure.

## Part 3: Create a system disk image file

Create a system disk image as described in the *M-Series Service Manual*. This backup image can be used to restore the system disk in the event of a severe software problem. This procedure requires the *Recovery Program* CD-ROM that you received with your iVDR.

This concludes the software installation procedure.

## Known problems

The following limitations are present in this M-Series iVDR Software 1.5.12 release. If you wish to obtain more information about these limitations, please mention the reference numbers that follow the description of each limitation. These known problems will be resolved in future releases.

### VGA monitor display settings

- Problem** The Windows desktop is oversized and scrolls as you move the mouse. The display adapter card in the iVDR always starts in 640x480 mode even though the Windows screen size is set to 800x600.
- Workaround** Press the **CTRL+ALT+C** hot-key sequence when AppCenter is fully initialized after power-up to switch the display adapter card to 800x600 display settings. If you inadvertently select this key sequence on an iVDR with a front panel, press the **CTRL+ALT+F** hot-key sequence to return to 640x480 display settings which is required for front panel operation.

### Can't delete a clip after failed import

- Problem** When attempting to import a clip and the import fails for any reason, opening the Transfer Monitor creates a clip with no thumbnail, the correct name, but the clip is unusable. The clip cannot be deleted because it is locked. (CR39405)
- Workaround** Open the properties dialog box for the clip and select unlock, then delete the clip as usual.

### Problems playing a clip that is still recording

- Problem** Using the transport controls (FF or Jog/Shuttle) to play a clip that is still recording can cause momentary video freezes in the play channel. This occurs because the system does not currently enforce the 5 second minimum record to play time. This allows the play point to be positioned too close to the record point causing intermittent audio output and video freeze frames. (CR39247)
- Workaround** When positioning the play point using Fast Forward or the Jog/Shuttle knob, avoid positioning the play point within 5 seconds of the record point.

### Copy, paste, and multiple item select in Playlist

- Problem** Copy, cut, paste, and multiple item select functions are not implemented in Playlist.
- Workaround** Use drag and drop, menu commands, or button operations instead. If a mouse and keyboard are connected, you can use the SHIFT key to select multiple items.



## Audio clip indicator in Configuration application

- Problem The Audio Clip indicator in the Configuration dialog box does not function. The indicator is always gray.
- Workaround None

## Variable (VAR) speed play preset

- Problem The VAR speed play preset selection in the Configuration application has no affect. When variable speed play is selected, the initial play speed is set to the last speed used instead of the preset setting. (CR38313)
- Workaround Leave the VAR speed at the desired rate before exiting VAR playback mode.

## AppCenter signal status indicators

- Problem The (V)(A1)(A2) signal status indicators in AppCenter (the main M-Series iVDR user interface) are not functional in this release.
- Workaround None.

## Audio drop-outs after playing several single-frame clips

- Problem After playing several single-frame clips, subsequent clips of any length may have audio dropouts. (CR40514)
- Workaround Avoid playing consecutive short clips of less than 3 seconds duration.


## “No space” message when importing GXF stream or file

- Problem A CVFS “No Space!” popup message may be displayed when a playlist is exported and then imported via a file or a network stream. This occurs only when the subclips in the playlist are ordered such that a subclip created later in the source clip plays first, followed by subclips that were created earlier in the source clip.
- This message is displayed in error, and can be safely ignored. (CR38458)
- Workaround None.

## Using Advanced Search

The Search dialog box now provides the advanced search mode which provides an extended set of attributes for locating assets.

To locate assets using Advanced Search:

1. Open the Search dialog box by doing one of the following:
  - Select the Clips pane context menu button , then choose **Search**, or
  - Select the **Search** button in the Clips pane.  
If the **Search** button is not displayed in the Clips pane, refer to assignable buttons in the *M-Series User Manual*.
2. To choose a specific bin to search, select the **Current Bin** label Look in: V:\default in the Search dialog box, then select a bin from the drop-down list. Otherwise, the search runs on the entire disk volume V:\.
3. Choose **Advanced** search to view the advanced search criteria list.  
When Advanced search is used, Basic search criteria is ignored.
4. Select **Add** to add new search criteria, or select **Remove** to remove it, then click **OK** to start the search.

The following table lists the advanced search attributes along with their conditions and value choices. Advanced searches can include metadata attributes. Since these are user defined, only their types and conditions are listed here.

### Advanced Search Criteria

Attributes	Conditions	Value	Value
Name	Like/Not Like	Name	N/A
Type	Is/Is Not	Clip Program List	N/A
Compression Format	Is/Is Not	DV25 MPEG	N/A
Video Standard	Is/Is Not	PAL NTSC	N/A
Create Date	Between Before After	Date 1 Date Date	Date 2
Modified Date	Between Before After	Date 1 Date Date	Date 2
Length	Greater Than Less Than Equals Between	Length Length Length Length 1	Length 2
Locked	Is	True/False	N/A


Attributes	Conditions	Value	Value	
Drop-frame timecode	Is	True/False	N/A	
Data Type	Conditions	Value	Value	
Metadata	String	Like/Not Like	A string	N/A
	Integer	Greater Than	A number	N/A
	Float	Less Than		
		Equals		
		Between		
Date	Between	Date 1	Date 2	
	Before	Date		
	After	Date		
Boolean	Is	True/False	N/A	

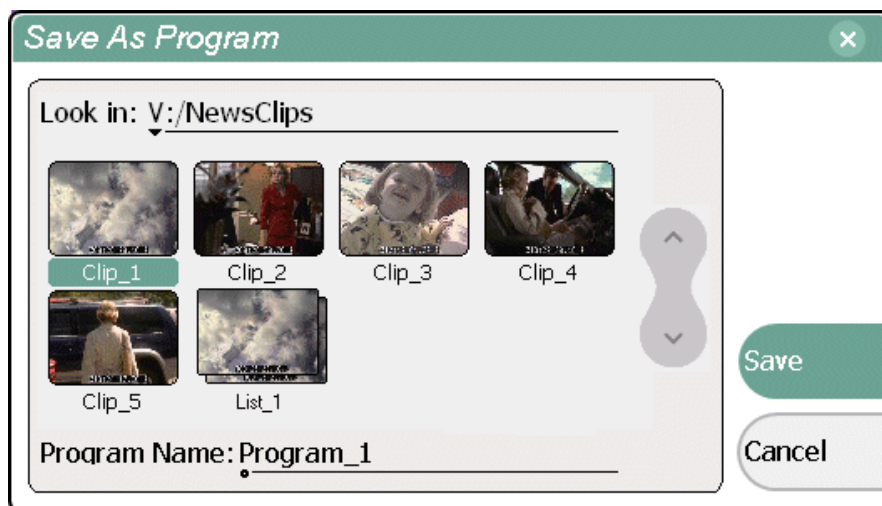
5. Once you have added all the search criteria, select **Ok** to start the search.

The search results are displayed in the Asset List. The text in the Current Bin control is replaced with a brief summary of the search.

## Saving a list as a program

Playlists can be saved as a program so that they can be managed as a single clip. This saves the media, but nothing that breaks the flow of playout such as pauses between events. You can insert programs into other playlists, or load and play them using the standard Player application. In Player, you can edit the program mark-in and mark-out points.

1. Load the playlist in the Playlist pane.
2. In List view, select the context menu button , and choose **Save As Program**.



3. Use the **Look in** control to change the current bin, if required.
4. Select the **Program Name** text entry control, then use the onscreen or external

keyboard to enter the program name.

5. Click **Save**.

The list is saved as a program in the current bin.

## Virus software support

Thomson Grass Valley does not recommend installing third party software on your iVDR. If you must install virus scanning software, configure it for manual virus scan only. Automatic virus scanning could disrupt iVDR operation and should not be used.

## Performing critical Windows updates



**CAUTION:** *Only critical Windows updates should be installed. Do not install other Windows 2000 or driver updates on your iVDR unless instructed by procedures in these release notes. “Critical” updates must be installed manually using the Windows Update program.*

From the factory, Automatic Windows Updates are disabled. This prevents updates from being performed in a manner that could harm the operation of networked iVDRs. Do not modify the Automatic Update setting.

### Part 1: Start the iVDR in Windows Safe Mode

Starting the iVDR in safe mode prevents the update program from using the media drives as the target for downloading and installing windows updates.

To start Windows in safe mode:

1. Connect a keyboard and mouse to the iVDR rear panel or front panel.

You'll need these to boot in Safe mode and use Windows Update program.

2. Shutdown AppCenter as follows:
  - a. In the AppCenter toolbar, select **System | Shutdown**.
  - b. In the Shutdown dialog, select **Exit to Windows**, then **OK**.

AppCenter closes, and the desktop appears.

3. In the Windows taskbar, select **Start**, then **Shut Down**.
4. Select **Restart**, and then **OK**.

Windows will shutdown, and restart.

5. Watch for the “Windows Starting” message in white text and the message “Please select the operating system to start”, then immediately press **F8**.

NUM LOCK must be off before the arrow keys on the numeric keypad will function.

6. Use the arrow keys to highlight the **Safe Mode with Networking** option, and then press **ENTER**.

Windows starts in Safe mode.

7. Click **OK** in the Safe mode warning message.
8. Proceed to Part 2 of this procedure.

## Part 2: Install critical updates

If your iVDR has internet access, you can use the Windows 2000 Update feature to scan your iVDR to determine if any critical updates are required. Afterward, you can download and install those updates manually.

To scan and install critical updates:

1. Open Windows Explorer, then locate and double-click the following file.

`c:\WINNT\system32\wupdmgr.exe`

Internet Explorer opens and connects to the Windows update web site.

2. On the web page, click **Scan for updates**.

Wait for the scan to complete.

3. If there are critical updates required for your iVDR, follow the instructions on the web page to install them.



***CAUTION: Install only critical Windows updates. Do not install other Windows 2000 updates or driver updates unless instructed by procedures in these release notes.***

