

# M-Series iVDR Version 1.6.9 Release Notes and Update Instructions

## Table of Contents

*Grass Valley Product Support*.....2  
*New features in version 1.6.9*.....3  
*Operational considerations*.....4  
*Installing software version 1.6.9*.....6  
*Known issues* .....11

## IMPORTANT: VGA Display ‘hot-key’ sequence

To set the correct display settings on systems without the optional front panel, press the **Ctrl+Alt+C** hot-key sequence after AppCenter initializes. Refer to “**VGA monitor display settings**” on page 11.

Copyright © 2004 Thomson Broadcast and Media Solutions, Inc. All rights reserved. Printed in the United States of America.

This document may not be copied in whole or in part, or otherwise reproduced except as specifically permitted under U.S. copyright law, without the prior written consent of Thomson Broadcast and Media Solutions, Inc., P.O. Box 59900, Nevada City, California 95959-7900

Grass Valley, M-Series, Profile, and Profile XP are either registered trademarks or trademarks of Thomson Broadcast and Media Solutions, Inc. in the United States and/or other countries. Other trademarks used in this document are either registered trademarks or trademarks of the manufacturers or vendors of the associated products. Thomson Broadcast and Media Solutions, Inc. products are covered by U.S. and foreign patents, issued and pending. Additional information regarding Thomson Broadcast and Media Solutions, Inc.'s trademarks and other proprietary rights may be found at [www.thomsongrassvalley.com](http://www.thomsongrassvalley.com).

Product options and specifications subject to change without notice. The information in this manual is furnished for informational use only, is subject to change without notice, and should not be construed as a commitment by Thomson Broadcast and Media Solutions, Inc. Thomson Broadcast and Media Solutions, Inc. assumes no responsibility or liability for any errors or inaccuracies that may appear in this publication.

## Grass Valley Product Support

To get technical assistance, check on the status of a question, or to report new issue, contact Grass Valley Product Support via e-mail, the Web, or by phone or fax.

### Web Technical Support

To access support information on the Web, visit the product support Web page on the Grass Valley Web site. You can download software or find solutions to a problem by searching our Frequently Asked Questions (FAQ) database.

**World Wide Web:** <http://www.thomsongrassvalley.com/support/>  
**Technical Support E-mail Address:** [gvgtechsupport@thomson.net](mailto:gvgtechsupport@thomson.net).

### Phone Support

Use the following information to contact product support by phone during business hours. Afterhours phone support is available for warranty and contract customers.

#### USA and Americas (includes Latin America and Canada)

Telephone (800) 547-8949 (Toll Free)  
(530) 478-4148 (Direct Dial Toll Call)  
Fax (530) 478-3181

#### Europe and UK

UK Regional Service Location	Tel +44 1753 218 777 Fax +44 1753 218 757	Italy	Tel +39 72 901 428 Fax +39 72 905 371
France	Tel +33 145 297 300 Fax +33 145 297 302	Germany	Tel +49 221 1791 234 Fax +49 221 1791 235

#### Asia Pacific

Australia	Tel (612) 8877 6800 Fax (612) 8877 6825	India	Tel (91) 11 373 0544 Fax (91) 11 373 0543
China	Tel (86) 10 6235 1185 Fax (86)10 6235 1190	Japan	Tel (813) 5484 6869 Fax (813) 5484 3775
Hong Kong	Tel (852)-2531-3000 Fax (852)-2802-2996	South East Asia	Tel (65) 7328 729 Fax (65)7327 649

### Authorized Support Representative

A local authorized support representative may be available in your country. To locate the support representative for your country, visit the product support Web page on the Grass Valley Web site (<http://www.thomsongrassvalley.com/support>).

## New features in version 1.6.9

Version 1.6.9 introduces the following features to extend the capabilities of the M-Series iVDR. Refer to the *M-Series User Manual* for more information.

- **Erase unused media**– After editing a clip by moving the mark-in/mark-out points, the remaining portion of media outside the marks can be erased to free media storage space. If the media outside the clip marks is referenced by a subclip, program, or event in a playlist, that media is not erased. Subclips and playlist events retain an extra 1 second of media before and after their mark points to allow some trimming.
- **Remote control through GPI Inputs**– The iVDR provides 12 GPI inputs through a rear panel 25-pin connector. You can assign the GPI inputs to control one or more channels and the action you want the iVDR channel(s) to take, such as play, record, stop, Fast Forward and Rewind. The iVDR channel can be configured to respond to active high or low GPI signals.
- **Controlling external equipment through GPI Outputs**– The iVDR provides 12 GPI outputs through a rear panel connector that you can use to control external equipment. You can assign the GPI outputs to channels in the iVDR using Configuration Manager. Once GPI outputs are assigned to a channel, you can use them in playlists to trigger external equipment. Further configuration is available in the Playlist application to assign the GPI output to an event or section.
- **BVW protocol**– You can use BVW protocol to control iVDR record and play channels. BVW protocol is supported using the BVW Player application running on an iVDR play channel, and BVW Recorder application running on an iVDR record channel. The iVDR applications support the standard set of BVW commands used for VTR machine control. BVW Insert Edit, used by some edit control panels, is not supported.
- **Continuous record mode**– Continuous record mode allows you to specify a fixed length recording that records continuously. When the fixed length you specify is reached, the iVDR begins to erase the oldest media in 3 minute segments to make room for new media. In this way, new media is continuously recorded while the recording is kept to a fixed length.

The continuous recording is stored in the iVDR as a program. The program thumbnail is displayed in the Clips pane immediately after the recording starts. While recording, you can load the continuous record program in Player for playout or to create subclips. The media referenced by the subclips that you create is saved outside the continuous record program and does not subtract from the continuous record length. The subclips can be inserted in Playlist as play events.

- **Cue points**– Player now includes the Cue View. When you select Cue View, a chronological list of cue points is displayed. The list begins with the mark-in point and ends with the mark-out point. You can add additional cue points to mark other frames within the clip. You can add cue points while the clip is playing or in stop mode. When you add a cue point, it is listed by a default name (such as “cue\_1”) and timecode value.

Cue points can be used to manage clip playout– jump to the selected cue or the next cue. You can also use the cue list to create subclips. The selected cue point becomes the mark-in point, while the mark-out point is the same as the source clip. If more than one cue point is selected, a subclip is created using the first and last cue points. The

“Create All” feature creates a subclip for every cue in the list. Each subclip duration is from each cue point to the source clip mark-out point.

- **Keyboard shortcuts**— A full set of keyboard shortcuts is now available for AppCenter and the control applications that run in AppCenter— Recorder, Player, Playlist.
- **Variable Speed Play enhancements** - Presets available for Variable Speed Play are now 0.25x, 0.5x, and 0.75x. In addition, a new option allows always using the selected preset when variable speed play starts rather than the last speed set by the Jog/Shuttle knob. Refer to the *M-Series User Manual* for more information.
- **Append record using serial protocol control** - Appending previously recorded clips is supported through serial protocol control using either AMP or VDCP Protocol Recorder applications. Contact Thomson Grass Valley for more information on control devices available.
- **Repositioning the AppCenter window**— When the iVDR display resolution is set to 800x600 or larger, you can reposition the AppCenter window as needed on the Windows desktop. To reposition the AppCenter window, click the StatusBar or an open space on the Toolbar, and then drag the window to a new position.
- **NewsQ Pro support** - Commands have been added to the AMP protocol to support NewsQ Pro.

## Operational considerations

Use the following information in your operational planning for the iVDR.

### Minimum record to playback time

To play a clip that is still recording, start record, then ***wait at least 5 seconds before starting playback***. Violating the 5 second minimum record to play time results in freeze frames and intermittent audio. This could happen inadvertently while using the transport controls. See [“Five second minimum record to play time is not enforced” on page 11](#).

### Composite analog video input performance

The iVDR can record signals from most non-timebase corrected signal sources such as color under video playback devices, i.e. VHS or U-Matic VTRs, and low cost cameras. However, for reliable recording performance some devices may require external signal conditioning products, i.e. timebase correction.

### Remote control protocol support

You can use remote control devices and automation software developed for the M-Series iVDR that use industry-standard serial protocols. For each supported protocol, the iVDR provides a protocol-specific application. Be sure to contact your 3rd party automation system or software provider to ensure that the iVDR is supported. Contact your Thomson Grass Valley sales representative for a list of companies that provide certified applications for the M-Series iVDR.

## Using USB devices

The USB connectors on the rear panel and front panel can be used to connect a USB drive, mouse, keyboard, or other USB device. Do not plug or unplug these devices while the iVDR is being used for critical play to air activity.

## Verifying clip transfer rate before playing

Before playing a clip that is being imported from a file or stream, verify that the clip transfer rate is higher than the clip data rate using the Transfer Monitor. This is required to ensure uninterrupted playback.

## Playing lists containing GPI output triggers

You can assign GPI output triggers to events and sections in a playlist. The GPI outputs can be used to trigger external equipment when the list plays. Before you can use GPI output triggers in a list, you must assign GPI outputs to the play channel using Configuration Manager. If you want to play a list that was created on another play channel, you must ensure that GPI triggers assigned to the play channels use the same names, otherwise the GPI triggers will not occur.

## Virus software support

Thomson Grass Valley does not recommend installing third party software on your iVDR. However, if you must install virus scanning software, configure it for manual virus scan only. Automatic virus scanning could disrupt iVDR operation and should not be used.

## Continuous record program length

A continuous recording is stored in the iVDR as a program. When the program is stored, its duration will be 3 minutes longer than the continuous record length specified. Take this into consideration when operating the iVDR with the media disks nearly full.

## Installing software version 1.6.9

This software installation procedure includes:

- [“Part 1: Install “Critical” Windows updates \(recommended\)” on page 6](#)
- [“Part 2: Update the XML parser software” on page 8](#)
- [“Part 3: Update the M-Series media file system” on page 9](#)
- [“Part 4: Uninstall existing version of M-Series software” on page 9](#)
- [“Part 5: Install M-Series system software” on page 10](#)
- [“Part 6: Create a system disk image file” on page 10](#)

### Part 1: Install “Critical” Windows updates (recommended)

“Critical” Windows updates are recommended, but not required for version 1.6.9. The iVDR must be connected to the internet to perform this procedure. If the iVDR does not have internet access, skip this procedure and start with [“Part 2: Update the XML parser software” on page 8](#).



**CAUTION:** Only “critical” Windows updates should be installed. Do not install other Windows 2000 or driver updates on your iVDR.

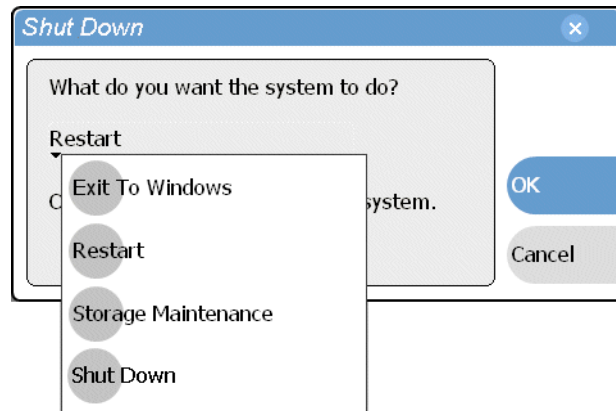
From the factory, Automatic Windows Updates are disabled. This prevents updates from being performed in a manner that could harm the operation of networked iVDRs. Do not modify the Automatic Update setting.

### Start the iVDR in Windows Safe Mode

Starting the iVDR in safe mode prevents the update program from using the media drives as the target for downloading and installing windows updates.

To start Windows in safe mode:

1. Connect a keyboard and mouse to the iVDR rear panel or front panel.  
You’ll need these to boot in Safe mode and use Windows Update program.
2. Restart the iVDR (and Windows) as follows:
  - a. In the AppCenter toolbar, select **System**, then choose **Shut Down** in the pop-up menu. The Shut Down dialog box appears.
  - b. In the Shut Down dialog box, choose **Restart** in the drop-down list, then select **OK**.



AppCenter closes, then Windows will shutdown, and restart.

3. Watch for the “Windows Starting” message in white text and the message “Please select the operating system to start”, then immediately press **F8**.

NUM LOCK must be off before the arrow keys on the numeric keypad will function.

4. Use the arrow keys to highlight the **Safe Mode with Networking** option, and then press **ENTER**.

Windows starts in Safe mode.

5. Click **OK** in the Safe mode warning message.
6. Proceed to [“Scan and install critical Windows updates”](#).

### Scan and install critical Windows updates

The Windows Update program is used in the procedure to scan the iVDR to determine if any critical updates are required. Afterward, you can download and install those updates manually. Your iVDR must have internet access to complete this procedure.

To scan and install critical updates:

1. Start the Windows Update program as follows:
  - a. Click **Start | Run**.
  - b. Type the following:  
`c:\WINNT\system32\wupdmgr`
  - c. Click **OK**.  
Internet Explorer opens and connects to the Windows update web site.
2. On the web page, click **Scan for updates**.  
Wait for the scan to complete.
3. If there are critical updates required for your iVDR, follow the instructions on the web page to install them.



**CAUTION: Install only critical Windows updates. Do not install other Windows 2000 updates or driver updates.**

4. Proceed to [“Part 2: Update the XML parser software”](#).

## Part 2: Update the XML parser software

Use the following steps to check the XML parser software version, and then update if needed.

To check and update the XML parser software:

1. Exit AppCenter as follows:
  - a. In the AppCenter toolbar, select **System**, then choose **Shut Down** in the pop-up menu.
  - b. In the Shut Down dialog box, choose **Exit to Windows** in the drop-down list, then select **OK**.
2. In the Windows taskbar, click **Start | Settings | Control Panel**, then select **Add/Remove Programs**.



3. Does **MSXML 4.0 SP2 Parser and SDK** appear in the programs list?
    - If “No”, proceed to step 4 to install the XML parser software.
    - If “Yes”, skip the rest of this procedure and go to [“Part 3: Update the M-Series media file system” on page 9](#).
  4. Insert the *M-Series iVDR System Software* CD-ROM in the CD-ROM reader or connect to a network drive containing the downloaded software.

You can also download the XML parser installation program from <http://www.thomsongrassvalley.com/downloads>.
  5. Use Windows Explorer to locate and run the *msxml.msi* installation file located in the **XML** folder on the CD-ROM, or in your download directory.

The installation wizard Welcome page is displayed.
  6. On the Welcome page, click **Next**, then follow the onscreen instructions to install the software. Use the **Install Now** option when asked.
- NOTE: Do not modify the Customer Information text page when it is displayed.**
7. Click **Finish** to close the installation wizard.
  8. Click **Yes** to restart the iVDR.
  9. Proceed to [“Part 3: Update the M-Series media file system”](#).



## Part 3: Update the M-Series media file system

Use this procedure to update the media file system. You can access the installation program on the *M-Series iVDR Software* CD-ROM or download it from <http://www.thomsongrassvalley.com/downloads/>.

To update the M-Series media file system:

1. Exit AppCenter as follows:
  - a. In the AppCenter toolbar, select **System**, then choose **Shut Down** in the pop-up menu.
  - b. In the Shut Down dialog box, choose **Exit to Windows** in the drop-down list, then select **OK**.
2. Insert the *M-Series iVDR System Software* CD-ROM in the CD-ROM reader or connect to a network drive containing the downloaded software.
3. Use Windows Explorer to locate and run the *cvfs\_win2k\_2.1.2b85Simple.exe* installation file located in the CVFS folder on the CD-ROM, or in your download directory.

The installation wizard Welcome page is displayed.

4. Accept the license agreement to start installation.
5. Click **Finish** when installation is complete.
6. Click **NO**.

You do not need to restart the iVDR at this time.

7. Proceed to [“Part 4: Uninstall existing version of M-Series software”](#).

## Part 4: Uninstall existing version of M-Series software

You must uninstall the existing version of M-Series software. This does not remove your media files from the iVDR. They will remain on the iVDR during the upgrade process.

To uninstall M-Series software:

1. Shutdown AppCenter as follows:
  - a. In the AppCenter toolbar, select **System | Shutdown**.
  - b. In the Shutdown dialog, select **Exit to Windows**, then **OK**.AppCenter closes, and the desktop appears.
2. Click **Start | Settings | Control Panel**.
3. Open **Add/Remove Programs**.
4. Select **M-Series**, then click **Remove**.
5. Click **Yes** to confirm file deletion.
6. When uninstall is complete, click **Yes** to restart the iVDR.
7. Proceed to [“Part 5: Install M-Series system software”](#).

## **Part 5: Install M-Series system software**

To install system software version 1.6.9:

1. Insert the *M-Series iVDR System Software* CD-ROM in the CD-ROM reader or connect to a network drive containing the downloaded software.

2. Run *setup.exe*

You can click **Start | Run** in the Windows taskbar, and then use **Browse** to locate and select the *setup.exe* file in the **M** directory on the CD-ROM or the download directory, then click **OK** to start installation.

3. In the Welcome dialog box, click **Next**, then follow onscreen instructions to install software.

**NOTE:** *Be sure to install the software in the default c:\profile directory. Do not change it. Specifying another location will result in incorrect operation of the software.*

4. After clicking **Finish** to close the install wizard, click **Yes**, to restart the iVDR.

After Windows initializes, AppCenter automatically starts.

5. Proceed to [“Part 6: Create a system disk image file”](#).

## **Part 6: Create a system disk image file**

Create a system disk image as described in the *M-Series Service Manual*. This backup image can be used to restore the system disk. The procedure requires the *Recovery Program* CD-ROM that you received with your iVDR.

This concludes the software installation procedure.

## Known issues

The following limitations are present in this M-Series iVDR Software 1.6.9 release. If you wish to obtain more information about these limitations, please mention the reference numbers that follow the description of each limitation. These known issues will be resolved in future releases.

### VGA monitor display settings

- Description** The Windows desktop is oversized and scrolls as you move the mouse. The display adapter card in the iVDR always starts in 640x480 mode even though the Windows screen size is set to 800x600.
- Workaround** Press the **CTRL+ALT+C** hot-key sequence when AppCenter is fully initialized after power-up to switch the display adapter card to 800x600 display settings. If you inadvertently select this key sequence on an iVDR with a front panel, press the **CTRL+ALT+L** hot-key sequence to return to 640x480 display settings which is required for front panel operation.

### Five second minimum record to play time is not enforced

- Description** The Player application does not enforce the 5 second minimum record to play time when playing a clip that is still being recorded. If the play point is positioned too close to the record point there can be momentary interruptions in audio output and video freeze frames. This can occur when using the transport controls (FF or Jog/Shuttle) to play a clip, or by pressing play less than 5 seconds after starting the recording. (CR39247)
- Workaround** Start record, then wait at least five seconds before pressing play. When positioning the play point using Fast Forward or the Jog/Shuttle knob, avoid positioning the play point within 5 seconds of the record point.

### Existing configuration files are not compatible with 1.6.9

- Description** Configuration files created using previous versions of M-Series System Software are not compatible with version 1.6.9.
- Workaround** Since the current configuration is retained during the software update, you can create a new configuration file after updating to 1.6.9. Files for other saved configurations must be recreated after updating to 1.6.9.

### Delay in update to available storage

- Description** When deleting a large number of clips, or clips with long durations, it may take from 1-2 minutes before the increase in available disk storage is reported in AppCenter.
- Workaround** None.

## Audio clipping indicator in Configuration application

- Description The audio clipping indicator in the Configuration dialog box does not function. The indicator is always gray.
- Workaround None

## AppCenter signal status indicators

- Description The (V)(A1)(A2) signal status indicators in AppCenter (the main M-Series iVDR user interface) are not functional in this release. The indicators are always on.
- Workaround None.

## New bin does not appear in 'Look In' drop-down list

- Description After creating a bin, the new bin is not displayed in the 'Look In' drop-down list. However, you can access the new bin by selecting **Organize Bins** in the 'Look In' drop-down list.
- Workaround After performing one of the following operations on any asset, the new bin will appear in the 'Look In' drop-down list— record, transfer, rename, delete, move, copy.

## Documentation: Minimum record length in continuous record

- Description Minimum continuous record length is 6 minutes, not 1 minute as indicated in the *M-Series User Manual* and *Online Help*.
- Workaround NA.

## Documentation: Erasing 'oldest' media in continuous record

- Description When continuous record length is reached, oldest media is erased in 3 minute segments, not 30 second segments as described in the *M-Series User Manual* and *Online Help*. The continuous record thumbnail image will update every three minutes as the oldest media is continuously deleted in 3 minute segments.
- Workaround NA.

## Documentation: Service Manual Software Version

- Description The M-Series Service Manual cover shows software version 1.5 instead of software version 1.6. There are no service manual updates for software version 1.6.
- Workaround NA.