

M-Series iVDR Version 2.0.4 Release Notes and Installation Instructions

Table of Contents

Grass Valley Product Support.....2
Version 2.0.4 new features and introductions.....3
Operational considerations.....3
Installing software version 2.0.4.....5
Known issues.....6
Installing “Critical” Windows updates.....8

IMPORTANT: VGA Display ‘hot-key’ sequence

To set the correct display settings on systems without the optional front panel, press the Ctrl+Alt+C hot-key sequence after AppCenter initializes. Refer to “VGA monitor display settings” on page 6.

Copyright © 2004 Thomson Broadcast and Media Solutions, Inc. All rights reserved. Printed in the United States of America.

This document may not be copied in whole or in part, or otherwise reproduced except as specifically permitted under U.S. copyright law, without the prior written consent of Thomson Broadcast and Media Solutions, Inc., P.O. Box 59900, Nevada City, California 95959-7900

Grass Valley, M-Series, Profile, and Profile XP are either registered trademarks or trademarks of Thomson Broadcast and Media Solutions, Inc. in the United States and/or other countries. Other trademarks used in this document are either registered trademarks or trademarks of the manufacturers or vendors of the associated products. Thomson Broadcast and Media Solutions, Inc. products are covered by U.S. and foreign patents, issued and pending. Additional information regarding Thomson Broadcast and Media Solutions, Inc.'s trademarks and other proprietary rights may be found at www.thomsongrassvalley.com.

Product options and specifications subject to change without notice. The information in this manual is furnished for informational use only, is subject to change without notice, and should not be construed as a commitment by Thomson Broadcast and Media Solutions, Inc. Thomson Broadcast and Media Solutions, Inc. assumes no responsibility or liability for any errors or inaccuracies that may appear in this publication.

Grass Valley Product Support

To get technical assistance, check on the status of a question, or to report new issue, contact Grass Valley Product Support via e-mail, the Web, or by phone or fax.

Web Technical Support

To access support information on the Web, visit the product support Web page on the Grass Valley Web site. You can download software or find solutions to a problem by searching our Frequently Asked Questions (FAQ) database.

World Wide Web: <http://www.thomsongrassvalley.com/support/>
Technical Support E-mail Address: gvgtechsupport@thomson.net.

Phone Support

Use the following information to contact product support by phone during business hours. Afterhours phone support is available for warranty and contract customers.

USA and Americas (includes Latin America and Canada)

Telephone (800) 547-8949 (Toll Free)
(530) 478-4148 (Direct Dial Toll Call)
Fax (530) 478-3181

Europe and UK

UK Regional Service Location	Tel +44 1753 218 777 Fax +44 1753 218 757	Italy	Tel +39 72 901 428 Fax +39 72 905 371
France	Tel +33 145 297 300 Fax +33 145 297 302	Germany	Tel +49 221 1791 234 Fax +49 221 1791 235

Asia Pacific

Australia	Tel (612) 8877 6800 Fax (612) 8877 6825	India	Tel (91) 11 373 0544 Fax (91) 11 373 0543
China	Tel (86) 10 6235 1185 Fax (86)10 6235 1190	Japan	Tel (813) 5484 6869 Fax (813) 5484 3775
Hong Kong	Tel (852)-2531-3000 Fax (852)-2802-2996	South East Asia	Tel (65) 7328 729 Fax (65)7327 649

Authorized Support Representative

A local authorized support representative may be available in your country. To locate the support representative for your country, visit the product support Web page on the Grass Valley Web site (<http://www.thomsongrassvalley.com/support>).

Version 2.0.4 new features and introductions

Version 2.0.4 introduces the following hardware and software features to extend the capabilities of the M-Series iVDR.

- **M-222D** - This new M-Series iVDR model has new hardware that provides digital audio I/O— AES/EBU and SDI embedded, 4ch/video.
- **M-322D** - This new M-Series iVDR model provides 50Mbps video compression— DV50, and MPEG-2 I Frame only, along with the new digital audio I/O— AES/EBU and SDI embedded, 4ch/video.
- **IEEE 1394 Input Option** - This IEEE 1394 option provides one 1394A input for importing and recording media from a digital recording device that uses DV format. After selecting the IEEE 1394 input for one of the Record channels, you can use the iVDR transport controls to control the DV device remotely through the 1394 connection.



WARNING: Do not install version 2.0.4 on models M-122A or M-222A. Version 2.0.4 does not support these models. Contact your Thomson Grass Valley representative for the latest information.

Operational considerations

Use the following information in your operational planning for the iVDR.

Minimum record to playback time

To play a clip that is still recording, start record, then *wait at least 5 seconds before starting playback*. Violating the 5 second minimum record to play time results in freeze frames and intermittent audio. This could happen inadvertently while using the transport controls. See [“Five second minimum record to play time is not enforced” on page 6](#).

Composite analog video input performance

The iVDR can record signals from most non-timebase corrected signal sources such as color under video playback devices, i.e. VHS or U-Matic VTRs, and low cost cameras. However, for reliable recording performance some devices may require external signal conditioning products, i.e. timebase correction.

Remote control protocol support

You can use remote control devices and automation software developed for the M-Series iVDR that use industry-standard serial protocols. For each supported protocol, the iVDR provides a protocol-specific application. Be sure to contact your 3rd party automation system or software provider to ensure that the iVDR is supported. Contact your Thomson Grass Valley sales representative for a list of companies that provide certified applications for the M-Series iVDR.

Using USB devices

The USB connectors on the rear panel and front panel can be used to connect a USB drive, mouse, keyboard, or other USB device. Do not plug or unplug these devices while the iVDR is being used for critical play to air activity.

Verifying clip transfer rate before playing

Before playing a clip that is being imported from a file or stream, verify that the clip transfer rate is higher than the clip data rate using the Transfer Monitor. This is required to ensure uninterrupted playback.

Playing lists containing GPI output triggers

You can assign GPI output triggers to events and sections in a playlist. The GPI outputs can be used to trigger external equipment when the list plays. Before you can use GPI output triggers in a list, you must assign GPI outputs to the play channel using Configuration Manager. If you want to play a list that was created on another play channel, you must ensure that GPI triggers assigned to the play channels use the same names, otherwise the GPI triggers will not occur.

Virus software support

Thomson Grass Valley does not recommend installing third party software on your iVDR. However, if you must install virus scanning software, configure it for manual virus scan only. Automatic virus scanning could disrupt iVDR operation and should not be used.

Continuous record program length

A continuous recording is stored in the iVDR as a program. When the program is stored, its duration will be 3 minutes longer than the continuous record length specified. Take this into consideration when operating the iVDR with the media disks nearly full.

NetCentral SNMP Agent

This software release installs the M-Series NetCentral SNMP Agent, however, the agent must be unlocked for operation with NetCentral Manager software. NetCentral Manager provides centralized monitoring using Simple Network Management Protocol (SNMP). The M-Series SNMP agent allows the M-Series to collect and store management information (such as disk errors, temperature, video and audio status) and make this available to NetCentral Manager. Contact your Thomson Grass Valley representative for more information about obtaining a software key to unlock the M-Series SNMP agent and configuring it for use with NetCentral Manager.

Installing software version 2.0.4

M-Series iVDR system software version 2.0.4 was installed on your new iVDR at the factory. In normal operation, you do not need to reinstall system software.

Perform the following installation procedure if:

- You are updating the iVDR system software.
- You are instructed by Thomson Grass Valley product support to re-install system software.



WARNING: Do not install version 2.0.4 on models M-122A or M-222A. Version 2.0.4 does not support these models. Contact your Thomson Grass Valley representative for the latest information.

Part 1: Install M-Series system software

To install system software:

1. Insert the *M-Series iVDR System Software* CD-ROM in the CD-ROM reader or connect to a network drive containing the downloaded software.

2. Run *setup.exe*

You can click **Start | Run** in the Windows taskbar, and then use **Browse** to locate and select the *setup.exe* file in the **M** directory on the CD-ROM or the download directory, then click **OK** to start installation.

3. In the Welcome dialog box, click **Next**, then follow onscreen instructions to install software.

NOTE: Be sure to install the software in the default *c:\profile* directory. Do not change it. Specifying another location will result in incorrect operation of the software.

4. After clicking **Finish** to close the install wizard, click **Yes**, to restart the iVDR.

After Windows initializes, AppCenter automatically starts.

5. Proceed to [“Create a system disk image file”](#).

Part 2: Create a system disk image file

Create a system disk image as described in the *M-Series Service Manual*. This backup image can be used to restore the system disk. The procedure requires the *Recovery Program* CD-ROM that you received with your iVDR.

This concludes the software installation procedure.

Known issues

The following limitations are present in this M-Series iVDR Software 2.0.4 release. If you wish to obtain more information about these limitations, please mention the reference numbers that follow the description of each limitation. These known issues will be resolved in future releases.

VGA monitor display settings

- Description** The Windows desktop is oversized and scrolls as you move the mouse. The display adapter card in the iVDR always starts in 640x480 mode even though the Windows screen size is set to 800x600.
- Workaround** Press the **CTRL+ALT+C** hot-key sequence when AppCenter is fully initialized after power-up to switch the display adapter card to 800x600 display settings. If you inadvertently select this key sequence on an iVDR with a front panel, press the **CTRL+ALT+L** hot-key sequence to return to 640x480 display settings which is required for front panel operation. All display hot-key sequences are described in the *M-Series User Manual*.

“Unsafe Removal of a Device...” message may appear during startup

- Description** Occasionally, during startup, the following Windows message may appear: “Unsafe Removal of a Device: PCI standard PCI-to-PCI bridge.” (CR47600)
- Workaround** Press **OK**, then restart the M-Series iVDR and complete startup without encountering the “Unsafe Removal” message.

Five second minimum record to play time is not enforced

- Description** The Player application does not enforce the 5 second minimum record to play time when playing a clip that is still being recorded. If the play point is positioned too close to the record point there can be momentary interruptions in audio output and video freeze frames. This can occur when using the transport controls (FF or Jog/Shuttle) to play a clip, or by pressing play less than 5 seconds after starting the recording. (CR39247)
- Workaround** Start record, then wait at least five seconds before pressing play. When positioning the play point using Fast Forward or the Jog/Shuttle knob, avoid positioning the play point within 5 seconds of the record point.

Audio clipping indicator in Configuration Manager

- Description** The audio clipping indicator in the Configuration dialog box does not function. The indicator is always gray.
- Workaround** None

Audio record fails after changing from digital to analog audio input

- Description After changing the audio source from digital (AES or embedded) to analog audio, subsequent clips recorded have silent audio. (CR48155)
- Workaround Select analog audio input, then exit and restart AppCenter. After AppCenter starts, new recordings will have good audio as long as the audio configuration is not changed.

Player: Signal status indicators do not operate

- Description The (V)(A1)(A2) signal status indicators in Player are not functional in this release. The indicators are always on.
- Workaround None.

AVI output file format is always non-interleaved

- Description When exporting media to an AVI file, the user interface allows you to choose interleaved (type1) or non-interleaved (type2) AVI file format, however, the AVI file format is always non-interleaved (type2). (CR46219)
- Workaround None.

VAR play speed always starts at preset VAR setting

- Description In Configuration Manager, when the “Always start at the preset VAR setting” option is cleared, the initial VAR speed is still set to the preset VAR setting. It should be set to the last VAR speed used. (CR47288)
- Workaround None.

Channel information displayed only in full-screen mode

- Description The operation of the channel information setting in Configuration Manager is unclear. As designed, this setting only affects the channel Monitor in full-screen mode, not split-screen mode. (CR47436)
- Workaround NA.

Documentation error

Description Error is located on page 205 of the user manual— “About editing events while playing a list”. You cannot modify an existing event while a playlist is playing. You must stop list play back, then open Event view to edit an event. However, new events can be added while playing the list.

Workaround NA.

Installing “Critical” Windows updates

“Critical” Windows updates are recommended, but not required for version 2.0.4. The following procedure describes how to install critical updates. The iVDR must be connected to the internet to perform this procedure.



CAUTION: Only “critical” Windows updates should be installed. Do not install other Windows 2000 or driver updates on your iVDR.

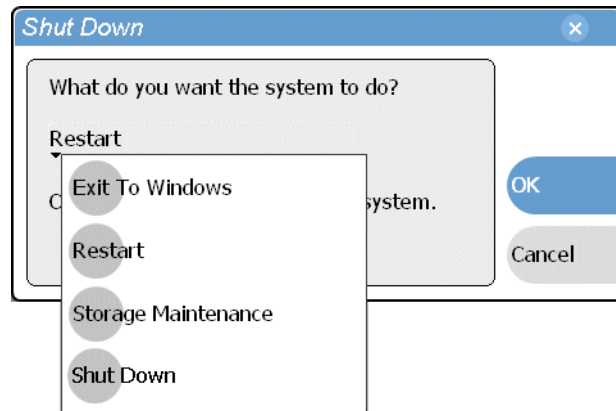
From the factory, Automatic Windows Updates are disabled. This prevents updates from being performed in a manner that could harm the operation of networked iVDRs. Do not modify the Automatic Update setting.

Start the iVDR in Windows Safe Mode

Starting the iVDR in safe mode prevents the update program from using the media drives as the target for downloading and installing windows updates.

To start Windows in safe mode:

1. Connect a keyboard and mouse to the iVDR rear panel or front panel.
You’ll need these to boot in Safe mode and use Windows Update program.
2. Restart the iVDR (and Windows) as follows:
 - a. In the AppCenter toolbar, select **System**, then choose **Shut Down** in the pop-up menu. The Shut Down dialog box appears.
 - b. In the Shut Down dialog box, choose **Restart** in the drop-down list, then select **OK**.



AppCenter closes, then Windows will shutdown, and restart.

3. Watch for the “Windows Starting” message in white text and the message “Please select the operating system to start”, then immediately press **F8**.

NUM LOCK must be off before the arrow keys on the numeric keypad will function.

4. Use the arrow keys to highlight the **Safe Mode with Networking** option, and then press **ENTER**.

Windows starts in Safe mode.

5. Click **OK** in the Safe mode warning message.
6. Proceed to “[Scan and install critical Windows updates](#)”.

Scan and install critical Windows updates

The Windows Update program is used in the procedure to scan the iVDR to determine if any critical updates are required. Afterward, you can download and install those updates manually. Your iVDR must have internet access to complete this procedure.

To scan and install critical updates:

1. Start the Windows Update program as follows:
 - a. Click **Start | Run**.
 - b. Type the following:
`c:\WINNT\system32\wupdmgr`
 - c. Click **OK**.
 Internet Explorer opens and connects to the Windows update web site.
2. On the web page, click **Scan for updates**.
 Wait for the scan to complete.
3. If there are critical updates required for your iVDR, follow the instructions on the web page to install them.



CAUTION: Install only critical Windows updates. Do not install other Windows 2000 updates or driver updates.

