



# Changing the Internal IP Address of an iMC-Panel-100

---

## Introduction

The iMC-Panel-100 has two IP addresses, one external and one internal. The internal IP address is normally 192.168.101.100.

If your system requires that the panel's external IP address be on a 192.168.101.xxx network, you must change the internal IP address so that it is *not* on the .101 network.

This note presents a procedure for changing the internal IP address. ***Do not perform this procedure unless you need to change the external IP address to 192.168.101.xxx.***

---

## Procedure

Several broad steps are required:

- Update the configuration of the iMC-Panel-100 to use an “alternate panel hardware address.”
- Change the network addresses in the (Windows) system of the iMC-Panel-100. This involves attaching a keyboard and mouse to the panel.
- Change a rotary switch setting on a circuit board inside the panel. You must remove the panel's rear hatch plate (with its attached circuit board) to access the rotary switch.
- Reassemble the panel, reconnect its cables, power it back up.
- If you changed the mouse cursor setting of the panel, change it back.

---

## Update the Panel Configuration

In these steps, you will read the panel's configuration, modify the configuration (slightly), and write the configuration back to the panel. Follow these steps:

- 1 Launch the MCS panel configuration editor.
- 2 Select the iMC-Panel-100 from the panel list at the left of the window. (If there is no entry in the panel list for your iMC-Panel-100, you must create one. See the *MCS Panel Configuration Editor Users Guide* for instructions.)
- 3 Choose ‘Read Config from Panel . . .’ from the ‘File’ menu.  
After a moment, the software will have read the configuration and you can navigate through its configuration pages.
- 4 Go to the ‘Advanced’ tab.  
Check the ‘Alternate Panel Hardware Address’ check box. You will see a large warning message. Click ‘OK’ in the warning window if you want to change the internal IP address.  
Uncheck the ‘Hide Mouse Cursor’ check box — for the duration of this procedure. You might need to recheck this option after you make the hardware changes required.

# Changing the Internal IP Address of an iMC-Panel-100

5 Choose 'Write Config to Panel . . .' from the 'File' menu.

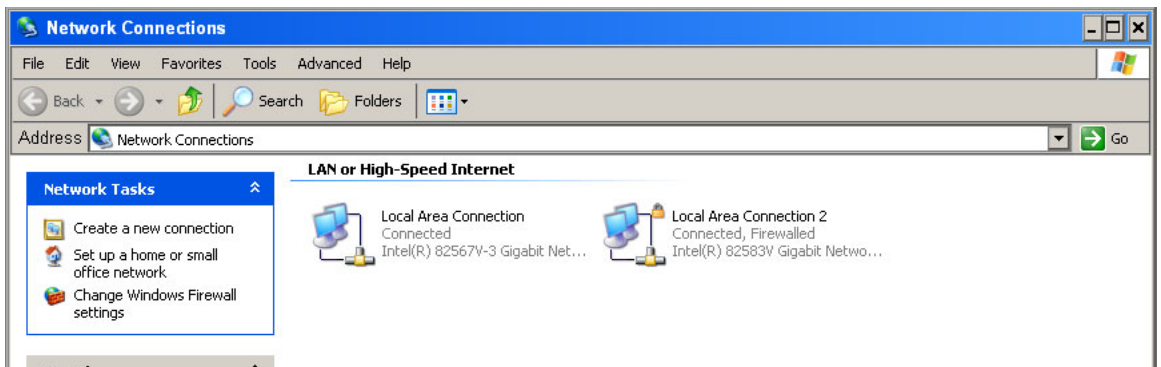
After a moment, the software will have updated the panel's configuration and will display an alert asking whether you want to reset the panel. At this step, it does not matter whether you do or not, so click 'No'.

---

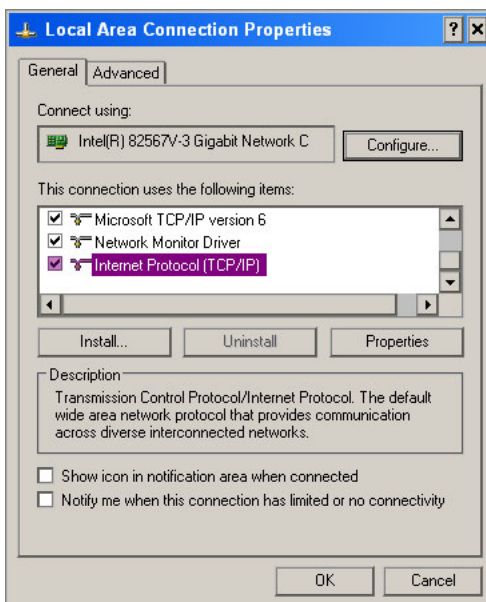
## Change the IP Addresses in the iMC-Panel-100

In these steps, you will use the Windows (XP) Network Connections tool of the iMC-Panel-100 and re-enter the panel's IP addresses.

- 1 Ensure that the panel is powered up and running.
- 2 Attach a USB mouse and a USB keyboard to the USB port(s) at the rear of the panel. You might need a USB hub (a cable having multiple USB ports) to connect the mouse and keyboard.
- 3 To get to the Windows desktop, press either 'Esc' or Alt-F4 on your keyboard. You might have to press 'Esc' more than once.
- 4 Click the Windows 'Start' button and, in the "Start" menu, click 'Network Connections'. The 'Network Connections' window appears:



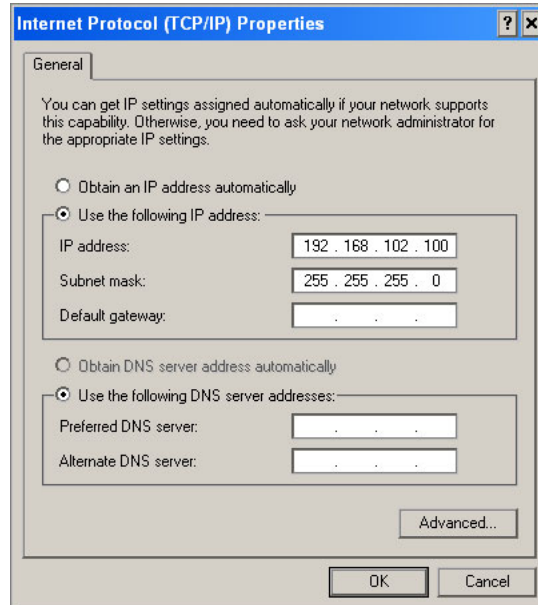
5 Right-click the icon for 'Local Connection'. This is for the *internal* IP address. Its 'Local Area Connection Properties' window appears:



Scroll to choose 'Internet Protocol (TCP/IP)' in the list and then click the 'Properties' button.

## Changing the Internal IP Address of an iMC-Panel-100

6 The 'Internet Protocol (TCP/IP) Properties' window appears:

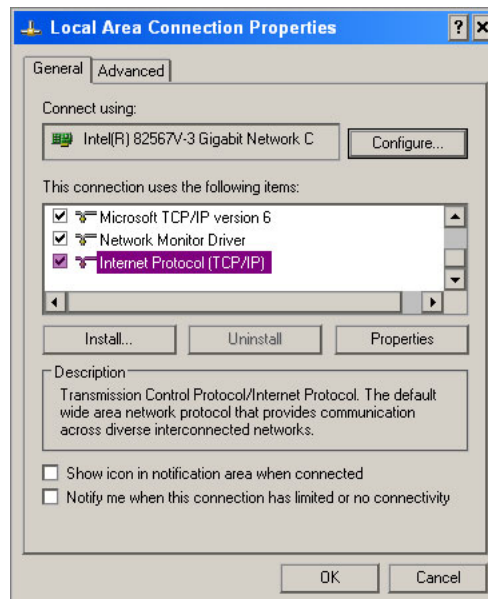


Enter 192.168.102.100 as the IP address and ensure that the subnet mask is 255.255.255.0. Click OK.

- ▲ Note that the external IP address and the internal IP address are not allowed to be the same, even for a moment. If in this process, your IP addresses collide, use a temporary IP address while changing the other of the IP addresses.

Click OK again to return to the 'Network Connections' window.

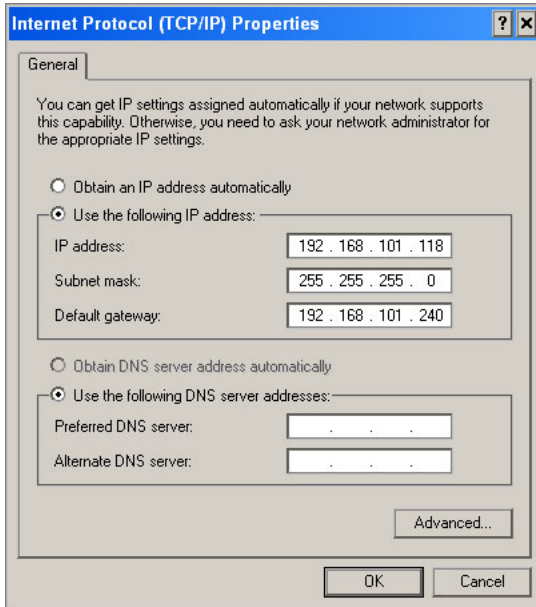
7 Now right-click the icon for 'Local Connection 2'. This is for the *external* IP address. Its 'Local Area Connection Properties' window appears:



Scroll to choose 'Internet Protocol (TCP/IP)' in the list and click the 'Properties' button.

# Changing the Internal IP Address of an iMC-Panel-100

8 The 'Internet Protocol (TCP/IP) Properties' window appears:



Using a device address suitable for your system, change the IP address to the .101 subnet. In this example, we entered 192.168.101.118. Ensure that the subnet mask is 255.255.255.0. Click OK.

- ▲ Note that the external IP address and the internal IP address are not allowed to be the same, even for a moment. If in this process, your IP addresses collide, use a temporary IP address while changing the other of the IP addresses.

Click OK again. Close the 'Network Connections' Window.

---

## Change the Rotary Switch inside the iMC-Panel-100

In these steps, you must remove the panel's rear hatch plate and a circuit board to access the rotary switch.

- 1 Power off the iMC-Panel-100. Do not just pull the power cable. Follow the shut-down procedure given in the *iMC-Panel-100 User's Guide*. Disconnect all cabling.
- 2 Place the iMC-Panel-100 face down on a clean well-lighted surface that is free of debris.
- 3 Remove the hatch plate at the rear of the panel.

Use a small Phillips-head screwdriver to remove the plate's 4 mounting screws:



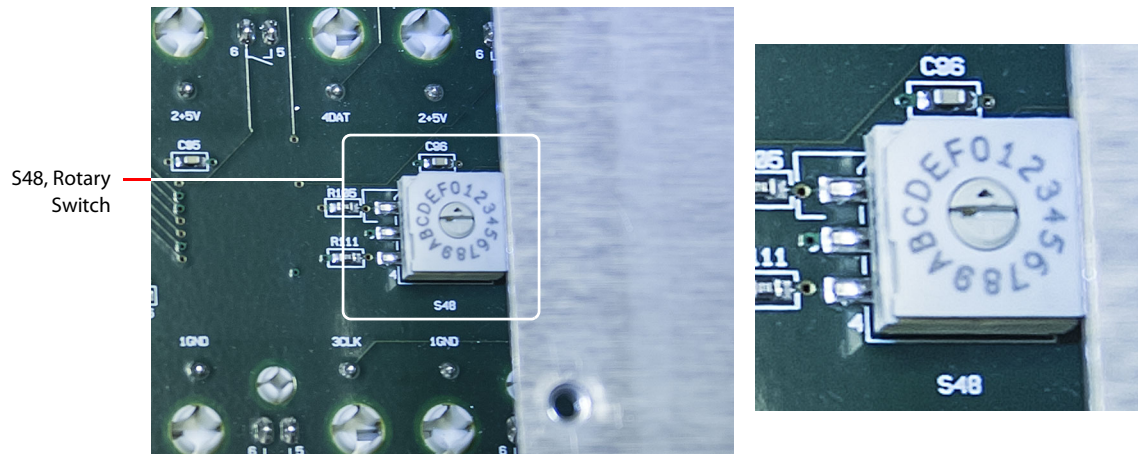
## Changing the Internal IP Address of an iMC-Panel-100

Lift the hatch plate away from the main panel enclosure. There is a circuit board attached to the hatch plate. Lay the hatch plate (with its circuit board) aside. The circuit board is attached to the main unit by several wire bundles.

Be careful not to stress the wire bundles.

Do not touch the circuit board unnecessarily. ESD damage could result. (Touch the metal enclosure before handling any of the electronics.)

- 4 Locate the rotary switch (S48) at the right end of the circuit board in the main enclosure:



Using a small slotted screwdriver, turn the rotary switch to position 0. It is a 16-position switch and its default position is F.

It is the small arrow on the switch that identifies the switch position. When you turn the switch, you will feel it snap into position.

- 5 Replace the hatch plate.
- 6 Reconnect cabling and power up the panel.

---

## Optionally Restore the Mouse Cursor State

If you changed the mouse cursor setting of the panel, follow these steps to change it back.

- 1 Launch the MCS panel configuration editor.
- 2 Select the iMC-Panel-100 from the panel list at the left of the window.
- 3 Choose 'Read Config from Panel . . .' from the 'File' menu.  
After a moment, the software will have read the configuration and you can navigate through its configuration pages.
- 4 Go to the 'Advanced' page.  
Ensure that the 'Alternate Panel Hardware Address' check box is checked.  
If you want the mouse cursor to be hidden, check the 'Hide Mouse Cursor' check box.
- 5 Choose 'Write Config to Panel . . .' from the 'File' menu.  
After a moment, the software will have updated the panel's configuration and will display an alert asking whether you want to reset the panel. Click 'Yes'. The panel will reset.