

2000NET

NETWORK INTERFACE MODULE

Release Notes



SOFTWARE VERSION 3.2.2

071812202
AUGUST 2004

the most watched worldwide

Contacting Grass Valley

Region	Voice	Fax	Address	Web Site
North America	(800) 547-8949 Support: 530-478-4148	Sales: (530) 478-3347 Support: (530) 478-3181	Grass Valley P.O. Box 599000 Nevada City, CA 95959-7900 USA	www.thomsongrassvalley.com
Pacific Operations	+852-2585-6688 Support: 852-2585-6579	+852-2802-2996		
U.K., Asia, Middle East	+44 1753 218 777	+44 1753 218 757		
France	+33 1 45 29 73 00			
Germany, Europe	+49 6150 104 782	+49 6150 104 223		

Copyright © Thomson Broadcast and Media Solutions All rights reserved.

Grass Valley Web Site

The www.thomsongrassvalley.com web site offers the following:

Online User Documentation — Current versions of product catalogs, brochures, data sheets, ordering guides, planning guides, manuals, and release notes in .pdf format can be downloaded.

FAQ Database — Solutions to problems and troubleshooting efforts can be found by searching our Frequently Asked Questions (FAQ) database.

Software Downloads — Software updates, drivers, and patches can be downloaded.

Version **3.2.2**

AUGUST 2004

2000NET Network Interface Module Release Notes

Introduction

This document provides information on the latest release of the network interface software for use with the 2000NET Network Interface Module for controlling the Kameleon 2000 Series frames. Read this document completely before attempting to download the latest software.

Pertinent reference documents are available on-line or hard copies can be ordered from Grass Valley.

These documents detail:

- New software features and operation ([page 4](#)),
- Acquiring and Installing Software ([page 7](#)), and
- Accessing Reference Documents ([page 9](#)).

Version 3.2.2 Software Release Features

2000NET Software version 3.2.2 adds the following features:

- Operation of new KAM-XM and other new Kameleon modules
- Other operational changes
- Asset tag assignment functionality
- Media module frame reporting enable and disable for external frame health connector

KAM-XM Module Operation

The latest 2000NET software allows operation of the new KAM-XM HDTV up/down conversion modules along with other new modules in the Kameleon series, including KAM-HD modules.

Refer to the Grass Valley web site for more information on the availability of these and other new Kameleon modules.

Other Operational Changes

Other operational changes for this release are summarized below:



- Documentation Server Address – the on-line access function to modular manual PDF files has been removed. This function provided assignment of an IP Address for to an on-line manual server on the Frame Config page. The **Help** button associated with this function (shown at left) will no longer appear on any web pages.

Asset Tag Assignment

The 2000NET module and applicable 2000 and Kameleon media modules may now be assigned an asset tag identifier for display on the Status page and in the inventory function of the NetConfig Network Configuration application.

On the 2000NET module, the Asset Tag entry field is located on the Configuration web page as shown in [Figure 1](#). Enter an asset tag identifier of up to 25 characters. On media modules, the Asset Tag function is on the Slot Config page ([Figure 2 on page 6](#)).

The asset tag identifier will be reported on the module's Status web page. The asset tag will also appear in the inventory function of the NetConfig Network Configuration application. Modules may then be sorted by asset number if desired. Refer to the NetConfig Instruction Manual for more information on using this function.

Figure 1. Slot Configuration Web Page

Configuration

Model: 2000NET Description: Network Interface Module
 Frame Location: Mod Lab - Bay 2, Slot: 13

reboot

Net Card SNMP Trap Reports

	Net Card Status	Hardware Switch
Enabled	<input checked="" type="checkbox"/>	<input checked="" type="checkbox"/>
Trap Severity	Alarm	Informational

SNMP Trap Destinations

IP Address	Community Name	Status	Operation
10.16.6.4	public	Active	<input type="button" value="v"/>
10.16.23.55	public	Active	<input type="button" value="v"/>
10.16.6.4	public	Active	<input type="button" value="v"/>
10.16.23.17	public	Active	<input type="button" value="v"/>
10.16.23.28	public	Active	<input type="button" value="v"/>
<input type="button" value="Apply"/>			

Asset Tag field

Asset Tag:

Media Module Frame Reporting

In addition to adding an Asset Tag function to applicable media modules, the latest 2000NET software provides a section for enabling or disabling Frame Health Reporting of media module slot faults, signal loss, and reference loss status back to the external Frame Health Alarm. Information sent to the external Frame Health connector, J103, labeled SER 3 GPI on the rear of the frame, has been modified to allow reporting of Signal Loss and Reference Loss warnings. Previously, only slot faults from media modules could be reported to this external alarm and disabling was not allowed.

Use the new **Frame Health Reporting** area on the media module slot config web page (Figure 2) to select what media module functions (**Slot Fault**, **Signal Loss** or **Reference Loss**) to report to the frame health alarm. If unchecked, the reporting for that function will not be reported to the frame health alarm.

Figure 2. Media Module Slot Config Web Page

Slot Config

Model: [Kameleon Module](#) Description: [Kameleon Module](#) ?
 Frame Location: [Bay 9 QA 2000 Frame](#) , Slot: 2

Slot Identification

Name: [Default](#)

Asset Tag:

Locate Module

Slot Memory

Restore upon Install

[Learn Module Config](#)

Frame Health Reporting

	Slot Fault	Signal Loss	Reference Loss
Enabled	<input checked="" type="checkbox"/>	<input checked="" type="checkbox"/>	<input checked="" type="checkbox"/>

Hardware Switch Controls

Module Status Reporting: [Enabled](#) Asynchronous Status Reporting: [Enabled](#)

Slot SNMP Trap Reports

	Slot Fault	Module Removed	Signal Loss	Reference Loss
Enabled	<input checked="" type="checkbox"/>	<input checked="" type="checkbox"/>	<input checked="" type="checkbox"/>	<input checked="" type="checkbox"/>
Trap Severity	Alarm	Warning	Warning	Warning

Acquiring and Installing Software

The latest software for the 2000NET module is available from the Thomson Grass Valley FAQ web site at the following URL:

<http://gvg.custhelp.com>

This will take you to the Grass Valley Customer Service FAQ data base. The information provided here is the most up-to-date. You may also subscribe to software updates through the FAQ site. This is recommended so that when new versions of software are released, you are notified by email.

To download the latest 2000NET software, do the following:

1. Navigate to the FAQ site and click on the first FAQ, **DOWNLOAD THE LATEST SOFTWARE?**
2. Select the 2000 Series link.
3. Select the link to the latest 2000NET Interface module software.
4. If you are updating from version 3.2.0 to version 3.2.2, you may use either the .fld or .bin file. If you are updating from an earlier version than 3.2.0, use the .bin file and the FTP Server procedure described in detail in the 2000NET Instruction Manual available on-line.
5. You may also use the NetConfig Networking Application option to update from version 3.2.0 to version 3.2.2 with the .fld file as described next.

NetConfig Method

To use this method, your 2000NET module must be running version 3.2.0 or later and you must have the NetConfig Networking Application option running on a networked PC on the same subnet as the frame with the 2000NET module. Two files are required for updating software, an .fld and an .sw2 for the module being updated. For acquiring software, refer to *Acquiring and Installing Software*. above.

To use NetConfig for software updating, follow the steps below:

1. Locate the PC directory in which the NetConfig application has been installed. The default location is C:\Program Files\Grass Valley Group\NetConfig.

If this is not where NetConfig was installed, right-click on the NetConfig desktop shortcut and select **Properties**, click on the **Shortcut** tab and note the location of the installation in the **Start In** field.

2. Copy the .sw2 file for the module update into the main NetConfig directory.

3. Create a subdirectory named **modular** (if one does not already exist) in the main NetConfig directory.
4. Copy the .fld file for the update into this modular subdirectory in the Netconfig directory.



5. Open NetConfig and click on the **Load SW** icon on the top toolbar (shown at left).
6. The NetConfig Update Devices window will open showing the software files available (Figure 3 on page 9).

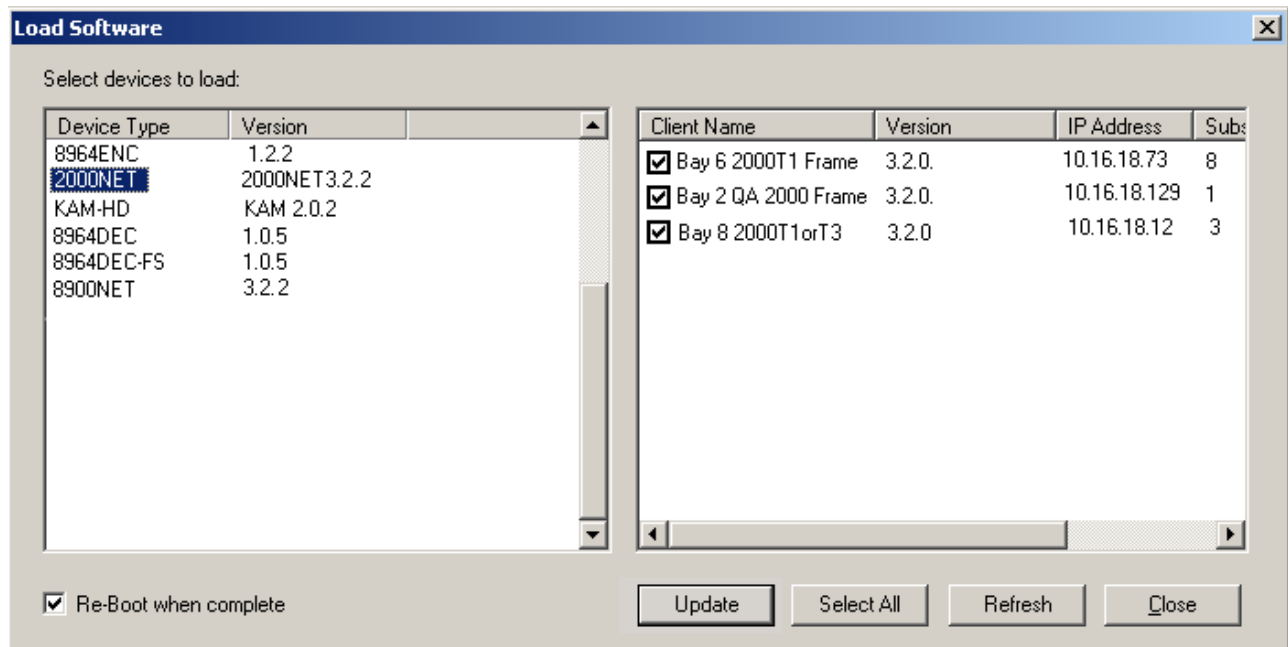
These device types and versions represent the .sw2 and .fld files loaded in the NetConfig main directory and the modular subdirectory. These files must be present on the PC running NetConfig for them to appear in the Device Type list.

7. Select the Device Type you wish to update. In the example in Figure 3, the 2000NET module Device Type has been selected and will be highlighted. All of the modules of this type accessible on the network will appear in the window on the right under the **Client Name** heading as shown.

The current software loaded on each module will be listed as well as the IP address and other information for the module client.

8. Check the corresponding **Client Name** boxes to upgrade the modules or use the **Select All** button to update all modules of this type present on the network.
9. Press the **Update** button to perform the update to all the selected modules.
10. Once the loading is complete, select the **Refresh** button to make sure all selected modules have updated to the correct software version which will be reported in the window.

Figure 3. NetConfig Update Devices Window



For more information on using NetConfig, refer to the NetConfig Networking Application Instruction Manual which is included with the option, available on the Thomson Grass Valley web site, and may also be present in the NetConfig directory during some NetConfig installations (Newton Control Panel installation is one example).

Accessing Reference Documents

For on-line access to any of the reference documents referred to in this Release Note, return to the Thomson Grass Valley home page and select the links described below.

- On-line access to instruction manuals in PDF format is available at <http://www.thomsongrassvalley.com/docs>. For this module, select Broadcast Products/Modular Products/Kameleon AV Media Processing System Products/Control and Monitoring, then select the 2000NET Network Interface Module link.

All of the documents referred to may also be ordered in hard copy from any Thomson Grass Valley Sales or Customer Service source. Refer to *Contacting Grass Valley* at the front of this document.

