

# KAM-XM-SERIES

HD UDC/UPC/UNC/DNC MODULES

Release Notes



SOFTWARE VERSION 1.4.1

071833702  
AUGUST 2005

*the most watched worldwide*

# Contacting Grass Valley

| Region                  | Voice                                    | Fax  | Address   | Web Site                   |
|-------------------------|--|--|---|----------------------------|
| North America           | (800) 547-8949<br>Support: 530-478-4148  | Sales: (530) 478-3347<br>Support: (530) 478-3181 | Grass Valley<br>P.O. Box 599000<br>Nevada City, CA 95959-7900 USA | www.thomsongrassvalley.com |
| Pacific Operations      | +852-2585-6688<br>Support: 852-2585-6579 | +852-2802-2996                                   |   |                            |
| U.K., Asia, Middle East | +44 1753 218 777                         | +44 1753 218 757                                 |   |                            |
| France                  | +33 1 45 29 73 00                        |  |   |                            |
| Germany, Europe         | +49 6150 104 782                         | +49 6150 104 223                                 |   |                            |

Copyright © Thomson Broadcast and Media Solutions All rights reserved.

## Grass Valley Web Site

The [www.thomsongrassvalley.com](http://www.thomsongrassvalley.com) web site offers the following:

**Online User Documentation** — Current versions of product catalogs, brochures, data sheets, ordering guides, planning guides, manuals, and release notes in .pdf format can be downloaded.

**FAQ Database** — Solutions to problems and troubleshooting efforts can be found by searching our Frequently Asked Questions (FAQ) database.

**Software Downloads** — Software updates, drivers, and patches can be downloaded.

Version **1.4.1**  
AUGUST 2005

# *KAM-XM Up/Down Converters Release Notes*

## **Introduction**

This document provides information on the latest release of the software for use with the following Kameleon modules:

- KAM-XM-UDC – HDTV Up/Down Converter
- KAM-XM-UPC – HDTV High Quality Up Converter
- KAM-XM-UNC – HDTV Up Converter with Advanced SDTV Noise Reduction
- KAM-XM-DNC – HDTV Down Converter

Read this document completely before attempting to download the latest software.

This document details:

- Important notes concerning this software release ([page 4](#)),
- System requirements ([page 4](#)),
- Information on acquiring and updating software ([page 5](#)), and
- Accessing Reference Documents ([page 12](#)).

## Version 1.4.1 Software Release

The latest software release for the KAM-XM modules fixes a number of software defects and adds the following enhancement:

- Improved embedded audio handling

Please refer to the Known Software Issues section below for important notes on this release of KAM-XM modules.

### Known Software Issues

Any existing software or operating issues or defects still present in this release are reported in [Table 1](#).

Table 1. Known Software and Operating Issues

| Area              | Issue  | ID    |
|-------------------|--|-------|
| 2000GEN           | When the 2000GEN module is locked to 525 or 625 line rate and the Reference is set to External on the Setup web page, inputting a signal into the module of an opposite line rate from that selected on the 2000GEN does not report an error on the Status web page. | 55229 |
| Software Update   | After a software update download, the module must be manually reset (removed and reinserted) to update the version numbers on the Status web page.   | 44128 |
| Down Conversion   | After a down conversion, active data is present on line 20 which is normally reserved as a V Blank line.   | 45884 |
| E-MEM             | When a saved E-MEM is loaded from an external storage area, the name associated with the E-MEM does not update in the corresponding Local Operations entry field. But when this E-MEM is recalled, the parameters are uploaded and applied to the module.            | 51408 |
| Factory Recall    | After a recall of factory defaults using the <b>Restore factory settings</b> button on the E-MEM page, the format settings on the Format web page may need to be reset.  | 51607 |
| KAM-XM-DNC        | When an untimed source is switched at the input to the module, black video will appear for 1-2 seconds before the new SD video appears on the output.  | 52774 |
| Closed Captioning | When an aspect of anamorphic is selected with a down converted signal containing closed captioning, a black box may appear covering a portion of the bottom half/mid-center of the video on the monitor.   | 52786 |
| RP 177 Setting    | The RP 177 checkbox setting on the ProcAmp web page is not remembered after a power cycle, E-MEM recall, or restoration of factory settings. It will have to be reselected if it was checked,  | 55151 |
| Web Page          | The Frame Reference hyperlink on a module Status web page opens an empty page. This should link to the Setup web page.   | 55224 |

## System Requirements

Operation of the KAM-XM modules in Kameleon 2000 Series frames has the following hardware and software requirements:

- Modules must be installed in a 2000T1DNG or 2000T3DNG Kameleon 2000 Series frame containing a 2000GEN module.
- The frame must have a 2000NET module with assembly number 671-5231-01 or later running software version 4.0.0 or later.

## Acquiring and Updating Software

The KAM-XM software upgrade package for this release is available from the Grass Valley FAQ database or the public FTP site. The fastest and easiest method for installing this software is using NetConfig, a networking application option available from Grass Valley. Before performing this upgrade, read the Important Notes below.

### Important Notes

- This upgrade will disable the video outputs from the module being upgraded. Make sure your module is off-air before beginning the upgrade process.
- The upgrade is a six step process that requires downloading six .fld files to the module. The module must reboot after each download.
- If you do not have the recommended NetConfig networking application, a free version of the latest NetConfig software can be downloaded from the Customer Service FAQ database as described in [Acquiring NetConfig on page 6](#). Using the latest version of NetConfig is recommended for best results. If using an older version of NetConfig is not successful, download the latest NetConfig and use it instead. NetConfig software download procedures are slightly different between versions 1.0 to 2.0.4 and 2.0.5 and later. Both procedures are described in these instructions.
- If you have previously used an ftp server and the Software Update web page for upgrading software to modular products, you may use this method to do this upgrade.

In this case, you would move the .fld files listed in [Step 3 on page 6](#) into the ftp server directory and follow the same instructions to download the first .fld, allow the module to reboot, then install the second .fld file.

**Note** This method is only recommended if you have the ftp server set up and have used this procedure before. Instructions for this type of download are covered in the *2000NET Instruction Manual* available online.

## Acquiring Software

To acquire the latest Kameleon software, go directly to the Grass Valley public FTP folder at the following URL:

`ftp://ftp.thomsongrassvalley.com/pub/modular`

1. Create a temporary folder on your C:\ drive if one does not exist.
2. Select the link to **Kameleon**. From this directory select the link to **KAM-XM**.
3. Download the following files to the C:\temp directory on your PC:
  - KAM-XM\_1.4.1.sw2 (required for NetConfig download)
  - apps\_1.4.1.fld
  - firmware\_1.4.1.fld
  - ucode1\_1.4.1.fld
  - ucode2\_1.4.1.fld
  - ucode3\_1.4.1.fld
  - uvc\_1.4.1.fld
4. If you have NetConfig running on a PC on the same subnet as the KAM-XM modules you are updating, proceed to [Updating Software With NetConfig](#) on page 7.

## Acquiring NetConfig

If you do not have NetConfig or the latest version (2.0.6) on your PC, you may download the latest version from the Grass Valley Customer Service FAQ database from the following URL:

`http://gvg.custhelp.com`

1. This link will take you to the Customer Service FAQ database. From the FAQ web page, select the first FAQ in the list, **Download the Latest Software?**
2. From the first FAQ, go to the **Answer** sections and select the **Software Utilities** selection at the bottom of the list.
3. Click on NetConfig to bring up the utilities available.
4. Click on the NetConfig (v2.0.6) link to access a zipped file for download. Download the zipped file to the C:\temp folder on your PC.
5. Extract the files into the following default location on your local drive:  
C:\Program Files\Grass Valley Group
6. Double-click on the NetConfig.exe file to install NetConfig.

## Updating Software With NetConfig

To update with NetConfig you must have the following:

- PC with NetConfig Networking application installed,
- IP connection between the frame containing the Kameleon modules and your PC, and
- 2000NET module in the Kameleon frame with software 3.2.2 or later.

### NetConfig Upgrade Procedure

Begin the upgrade procedure by moving the KAM-XM files you have downloaded into your Temp directory into the correct NetConfig directories.

1. Copy all KAM-XM software download files from the C:\temp directory into the main NetConfig directory on your PC. This is normally in the default location in C:\Program Files\Grass Valley Group\NetConfig.

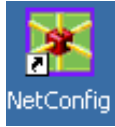
If you have installed NetConfig in another location, find the location of the NetConfig directory by right-clicking on the NetConfig shortcut. Select **Properties** and note the location in the **Start In** field. Download the package to the NetConfig directory.

2. In the main NetConfig directory, locate a folder named **modular**. If this folder does not exist, create a folder called **modular** in the main NetConfig directory.
3. Move the six .fld files you copied into the main NetConfig directory into this **modular** directory.
4. Verify that the KAM-XM\_1.4.1.sw2 file is somewhere in the main NetConfig directory (not in the **modular** directory).

**Note** NetConfig reads each .sw2 file in its main directory and navigates to the directory given in these files to find the .fld files available. The .sw2 file should not have a .txt extension or NetConfig will not recognize it. There may be a number of .sw2 and .fld files in your NetConfig directory for other modular products. These will not interfere with the update.

5. Locate the module to be upgraded in your frame and unplug it. Plug it back in to begin the upgrade.

**CAUTION** During the download, the module will have no video output, so be sure the module is off-air before upgrading.



6. Open NetConfig.
7. Navigate to the frame containing the KAM-XM module you wish to upgrade on the left of the screen.

**Note** If you have not used NetConfig before, refer to the *NetConfig Instruction Manual* in the main NetConfig directory in pdf format (NetConfig.pdf).



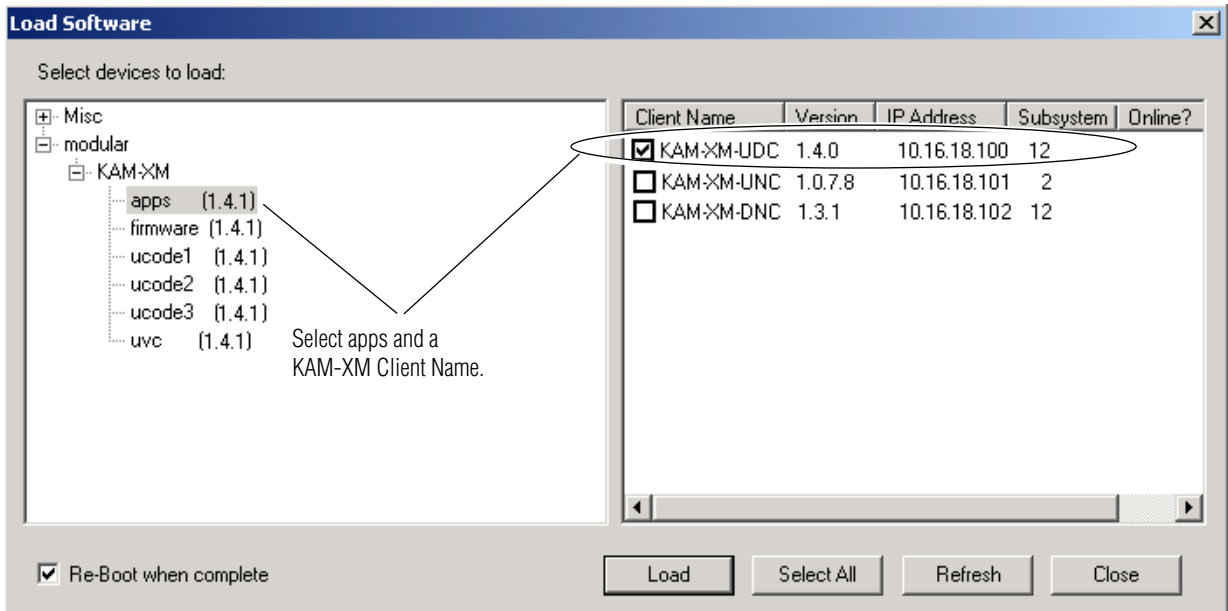
8. Click on the **Load SW** button on the top of the NetConfig toolbar.
9. This will bring up the Load Software screen (Figure 1). This screen shows NetConfig version 2.0.6. If you are using an earlier version of NetConfig, the file structure is slightly different, but the files versions are the same.

The following files should appear under Device Type, all reporting the same software version:

- apps\_1.4.1.fld
- firmware\_1.4.1.fld
- ucode1\_1.4.1.fld
- ucode2\_1.4.1.fld
- ucode3\_1.4.1.fld
- uvc\_1.4.1.fld

10. Highlight the **apps** Device Type. All KAM-XM modules accessible on this subnet will be displayed in the window on the right with their current software version and frame IP Address.

Figure 1. NetConfig Load Software Screen – First .fld Download



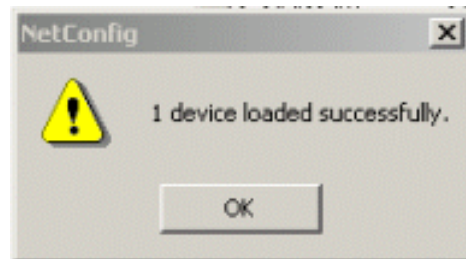


11. Find the KAM-XM module you are updating in the Client Name list. Check the corresponding checkbox in the window on the right to indicate you wish to update this device.

**Note** You may upgrade all modules at once with this application by checking all of the Client Name checkboxes. We recommend upgrading one module first to understand the process before attempting to upgrade all of the modules at once.

12. Check the **Re-Boot when complete** checkbox in the lower left corner of the screen.
13. Click on the **Load** button to begin the update.
14. If the load has been successful, a popup will appear as shown in [Figure 2](#). Click the **OK** button.

Figure 2. Load Successful Popup



15. Allow the reboot to complete.
16. Bring up NetConfig again and click on the **Discover** button in the top menu bar. Then click on the **Load SW** button.
17. Select the **firmware** Device Type on the left ([Figure 1 on page 8](#)).
18. Select the same Client Name as the first download.
19. Check the **Re-Boot when complete** checkbox in the lower left corner of the screen.
20. Press the **Load** button to download the firmware to the KAM-XM module selected.
21. If the load has been successful, a popup will appear as shown in [Figure 2](#). Click the **OK** button.
22. Allow the reboot to complete.



23. Bring up NetConfig again and click on the **Discover** button in the top menu bar. Then click on the **Load SW** button.
24. Select the **ucode1** Device Type on the left.
25. Select the same Client Name as the first download.
26. Complete the same steps for the rest of the .fld files listed, allowing the reboot to complete each time.
27. Verify that all downloads were successful by checking the Download Status table on the Status web page (Figure 3 on page 11).

For more information on using NetConfig, refer to the *NetConfig Networking Application Instruction Manual* which is included with the option, available on the Thomson Grass Valley web site, and may also be present in the NetConfig directory during some NetConfig installations (Newton Control Panel installation is one example).

## Confirm Download Status

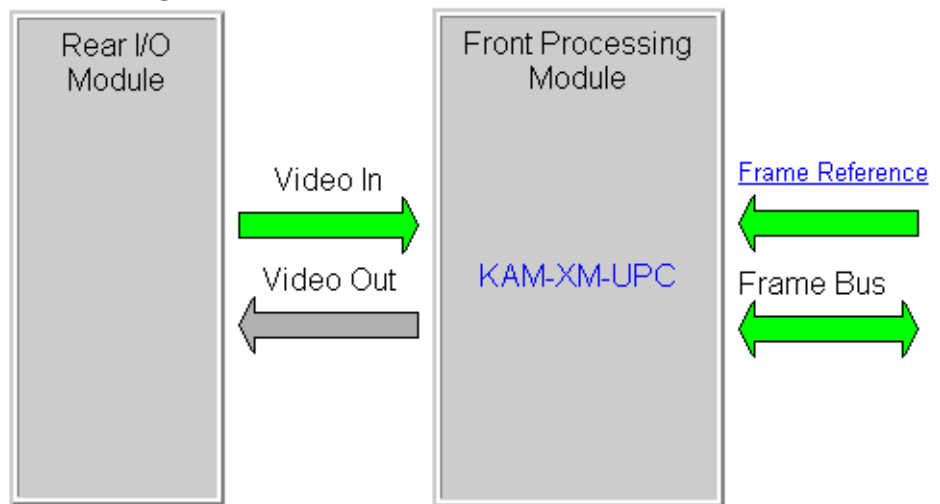
When the entire download has been completed, refer to the KAM-XM module Status web page to check that each of the Download Status fields reports the correct version as illustrated in Figure 3.

Figure 3. KAM-XM Status Web Page



Model: [KAM-XM-UPC](#) Description: [HQ Up Converter](#)  
 Frame Location: [Modular Lab](#) , Slot: [2](#)  
 Last Recalled E-MEM: [Power On Default](#)

### Module Physical Structure



Confirm Download Status

### Identification

|                  |                                   |
|------------------|-----------------------------------|
| Part Number      | <a href="#">115-0079-21B</a>      |
| Serial Number    | <a href="#">G0086</a>             |
| Hardware Version | <a href="#">B</a>                 |
| License Tag      | <a href="#">63.04.32.52.14.AF</a> |

### Download Status

|          |                       |
|----------|-----------------------|
| Apps     | <a href="#">1.4.1</a> |
| uCode1   | <a href="#">1.4.1</a> |
| uCode2   | <a href="#">1.4.1</a> |
| uCode3   | <a href="#">1.4.1</a> |
| UVC      | <a href="#">1.4.1</a> |
| Firmware | <a href="#">1.4.1</a> |

### Version

|                 |                        |
|-----------------|------------------------|
| Program         | <a href="#">UVC</a>    |
| Software        | <a href="#">1.4.1</a>  |
| Video Firmware  | <a href="#">1.6.13</a> |
| Audio Firmware  | <a href="#">2.0.2</a>  |
| P4K-MC Firmware | <a href="#">1.2.2</a>  |

## Accessing Reference Documents

For on-line access to reference documents referred to in these Release Notes, navigate to the following URL:

<http://www.thomsongrassvalley.com/docs/>

Select **Broadcast Products**, then the **Modular Products** link and scroll through the available documents. All of the documents referred to may also be ordered in hard copy from any Grass Valley Sales or Customer Service source. Refer to *Contacting Grass Valley* at the front of this document.