

8972PX

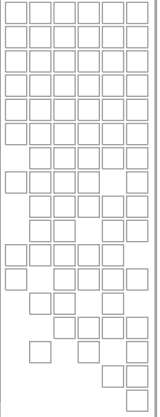
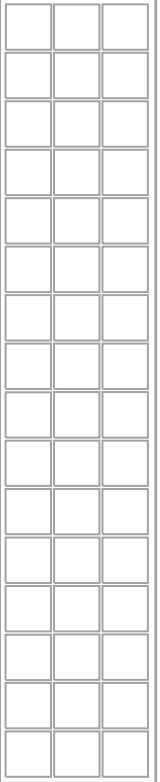
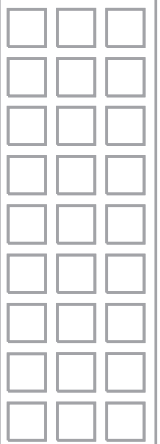
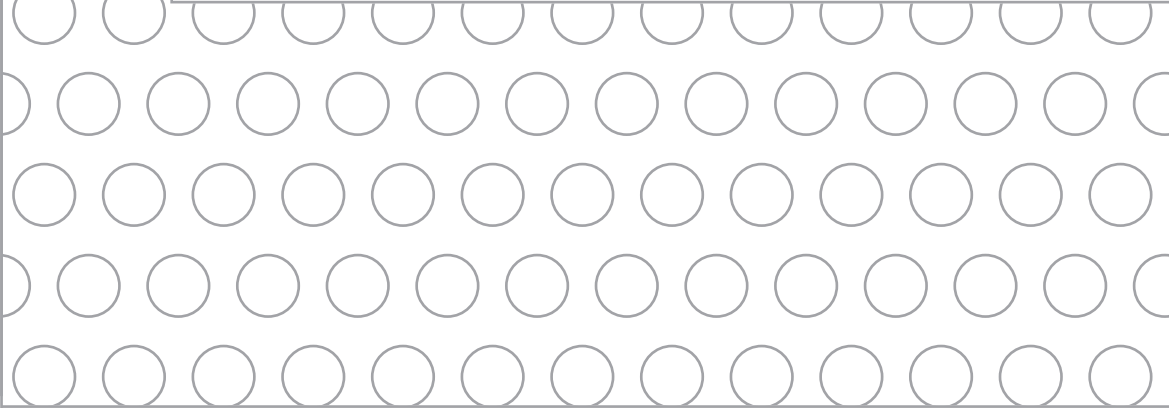
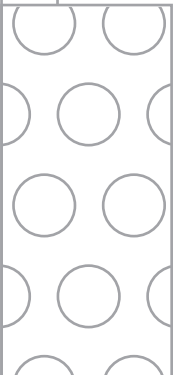
HD/SD/ASI PROTECTION SWITCH

Release Notes



SOFTWARE VERSION 1.1.1

071862401
MAY 2008



Contacting Grass Valley

International Support Centers	France 24 x 7	+800 8080 2020 or +33 1 48 25 20 20 +800 8080 2020 or +33 1 48 25 20 20	United States/Canada 24 x 7	+1 800 547 8949 or +1 530 478 4148
Local Support Centers (available during normal business hours)	Asia	Hong Kong, Taiwan, Korea, Macau: +852 2531 3058 Indian Subcontinent: +91 22 24933476 Southeast Asia/Malaysia: +603 7805 3884 Southeast Asia/Singapore: +65 6379 1313 China: +861 0660 159 450 Japan: +81 3 5484 6868		
		Australia and New Zealand: +61 1300 721 495	Central/South America: +55 11 5509 3443	
		Middle East: +971 4 299 64 40 Near East and Africa: +800 8080 2020 or +33 1 48 25 20 20		
	Europe	Belarus, Russia, Tadzikistan, Ukraine, Uzbekistan: +7 095 2580924 225 Switzerland: +41 1 487 80 02 S. Europe/Italy-Roma: +39 06 87 20 35 28 -Milan: +39 02 48 41 46 58 S. Europe/Spain: +34 91 512 03 50 Benelux/Belgium: +32 (0) 2 334 90 30 Benelux/Netherlands: +31 (0) 35 62 38 42 1 N. Europe: +45 45 96 88 70 Germany, Austria, Eastern Europe: +49 6150 104 444 UK, Ireland, Israel: +44 118 923 0499		

Copyright © Grass Valley. All rights reserved.

This product may be covered by one or more U.S. and foreign patents.

Grass Valley Web Site

The www.thomsongrassvalley.com web site offers the following:

Online User Documentation — Current versions of product catalogs, brochures, data sheets, ordering guides, planning guides, manuals, and release notes in .pdf format can be downloaded.

FAQ Database — Solutions to problems and troubleshooting efforts can be found by searching our Frequently Asked Questions (FAQ) database.

Software Downloads — Download software updates, drivers, and patches.



END-OF-LIFE PRODUCT RECYCLING NOTICE

Grass Valley's innovation and excellence in product design also extends to the programs we've established to manage the recycling of our products. Grass Valley has developed a comprehensive end-of-life product take back program for recycle or disposal of end-of-life products. Our program meets the requirements of the European Union's WEEE Directive, the United States Environmental Protection Agency, and U.S. state and local agencies.

Grass Valley's end-of-life product take back program assures proper disposal by use of Best Available Technology. This program accepts any Grass Valley branded equipment. Upon request, a Certificate of Recycling or a Certificate of Destruction, depending on the ultimate disposition of the product, can be sent to the requester.

Grass Valley will be responsible for all costs associated with recycling and disposal, including freight. However, you are responsible for the removal of the equipment from your facility and packing the equipment to make it ready for pickup.



For further information on the Grass Valley product take back system please contact Grass Valley at + 800 80 80 20 20 or +33 1 48 25 20 20 from most other countries. In the U.S. and Canada please call 800-547-8949 or 530-478-4148, and ask to be connected to the EH&S Department. Additional information concerning the program can be found at: www.thomsongrassvalley.com/environment



Contents

- 8972PX Protection Switch
Module Release Notes** 5
 - Introduction 5
 - 8972PX Version 1.1.1 Software Overview 5
 - Version 1.1.1 Resolved Software Issues 5
 - Software Updating 6
 - Using NetConfig to Update Software 6
 - NetConfig Update Procedure 7
 - Updating Software with a MicroSD Card 10
 - Required Components 10
 - MicroSD Card Update Procedure 11

8972PX Protection Switch Module Release Notes

Introduction

These release notes provide details on the latest release of the 8972PX Protection Switch module and instructions for updating software. This release upgrades software version 1.1.0 to version 1.1.1.

These release notes contain the following sections:

- 8972PX 1.1.1 Software Overview
 - Version 1.1.1 Resolved Software Issues ([page 5](#))
- Software Updating Procedures ([page 6](#))

8972PX Version 1.1.1 Software Overview

The resolved software issues for the 8972PX module from version 1.1.0 to version 1.1.1 are summarized below.

Version 1.1.1 Resolved Software Issues

The following software issues have been resolved in this release:

- The front edge **PRI**, **SEC**, and **ALT** hardware pushbuttons on the front edge of the module circuit board now work correctly to force the output to the selected input and switch the module to Manual Switch Mode (89654, 89607).
- The 8972PX Instruction Manual (071858001) has been updated to better describe the operation of the GPI interface. When the GPI interface is activated, no other controls can be used to change inputs. When GPI control is removed, the module is left in Manual mode and can be controlled by any of the manual switching controls or set for autonomous mode (88488).

Software Updating

There are two methods to update software: the Grass Valley PC application NetConfig (available from the Thomson Grass Valley web site free of charge) or using a microSD card (requires purchase of microSD card and adapter and USB card reader). Software loading times are somewhat shorter using the microSD method and multiple module type software update files can be loaded onto the microSD card for easy updating.

Using NetConfig to Update Software

The NetConfig networking application is a highly versatile tool for both software updating and accessing modular products on the network to view status and set module parameters. If you do not have NetConfig or the latest version (version 2.0.9 as of this printing), you can download it free of charge from the Thomson Grass Valley ftp server at this link:

<ftp://ftp.thomsongrassvalley.com/router/NetConfig/>

Right-click on the latest NetConfig link to download the zipped file to the C:\temp folder or other convenient location on your PC.

1. Extract the zipped files onto your local drive:
2. Double-click on the NetConfig.EXE file to install NetConfig.

Note Installing NetConfig into the default location given in the install script (C:\Programs\Grass Valley Group) is recommended for future NetConfig and module software updates.

NetConfig Update Procedure

To update with NetConfig you must have the following:

- PC with NetConfig Networking application installed (latest version is recommended, version 2.0.9 is available as of this printing),
- IP connection between the GeckoFlex frame and your PC, and
- 8900NET module in the GeckoFlex frame with software 4.2.0 or later.

Follow the steps below to update the modules with NetConfig:

1. Locate the 8972PX module software on the Thomson Grass Valley ftp server at this link:

<ftp://ftp.thomsongrassvalley.com/modular/8900/8972PX/1.1.1>

2. On your local C:\ drive, locate the NetConfig program directory. This directory is normally in the default location in C:\Program Files\Grass Valley Group\NetConfig.

If you have installed NetConfig in another location, find the location of the NetConfig directory by right-clicking on the NetConfig shortcut. Select **Properties** and note the location in the **Start In** field.

3. To update the 8972PX modules, copy the .fld and .sw2 files listed below into the main NetConfig directory from the ftp site.
 - 8972PX_v1.1.1.sw2
 - 8972PX_v1.1.1.fld
4. In the main NetConfig directory, locate a folder named **modular**. If this folder does not exist, create a folder called **modular** in the main NetConfig directory.
5. Move the .fld file listed above in the main NetConfig directory into this **modular** directory.
6. Verify that the 8972PX_v1.1.1.sw2 is in the main NetConfig directory (not in the **modular** directory).

Note NetConfig reads each .sw2 file in its main directory and navigates to the directory given in these files to find the .fld files available. There may be a number of .sw2 and .fld files in your NetConfig directory for other modular products. These will not interfere with the update.

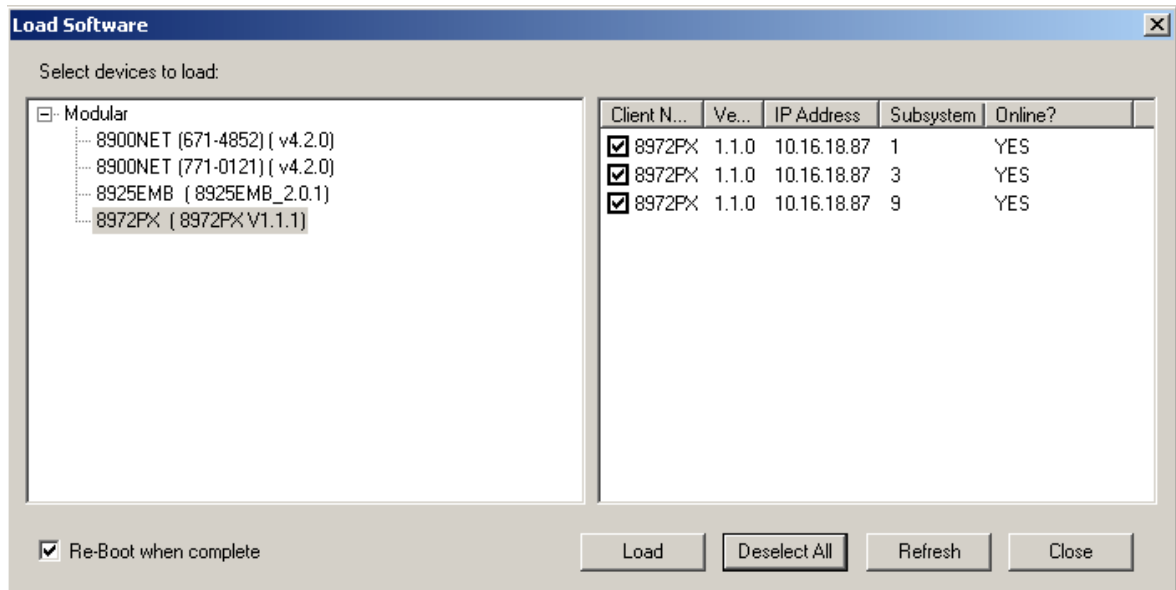
7. Open NetConfig by double clicking on the NetConfig icon.

Note If you have not used NetConfig before, refer to the *NetConfig Instruction Manual* included during installation in the main NetConfig directory in PDF format (NetConfig.pdf).



8. Click on the **Load SW** button on the top of the NetConfig toolbar.
9. Open the **modular** directory by selecting the +. You should see the 8972PX selections (as well as other modular .fld files you may have in your modular directory).
10. Select the **8972PX (8972PX V1.1.1)** directory to highlight it.
11. This will bring up all of the 8972PX modules on your network on the right side of the screen as shown in [Figure 1](#).

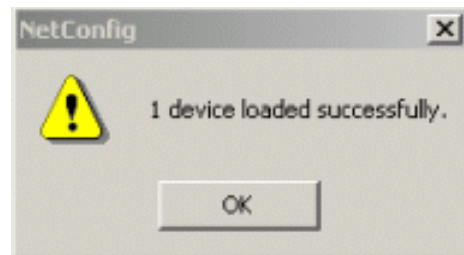
Figure 1. NetConfig Load Software Screen



12. Check the 8972PX module checkboxes you wish to update in the Client Name list. You may update all devices at once if desired by clicking on the **Select All** button at the bottom of the screen. This will check all the modules. Or you may only check the corresponding checkbox only next to the specific modules you need to update.
13. Check the **Re-Boot when complete** checkbox in the lower left corner of the Load Software screen.
14. Select the **Load** button to update all selected modules.

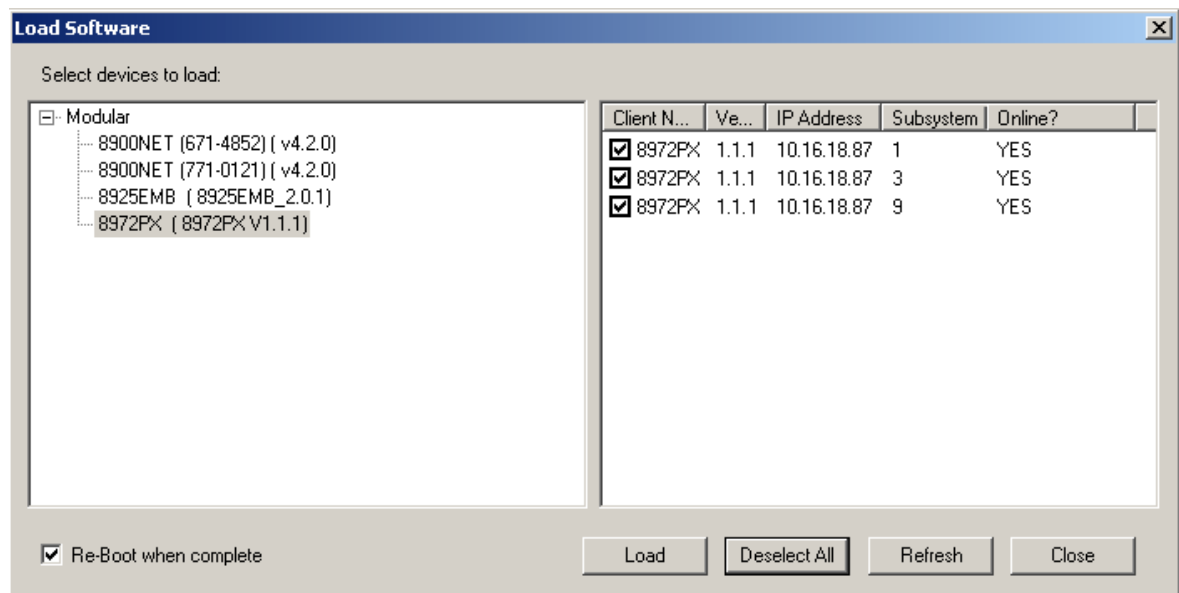
15. If the upload has been successful, a pop-up screen similar to the one shown in [Figure 2](#) will appear.

Figure 2. Load Successful Popup



16. When the software update has finished, check that the software version for each module in the Client Name list is at version 1.1.1 as shown in [Figure 3](#).

Figure 3. Updated Software Version Shown in NetConfig



17. Check the Status web page on the main module for the correct software version ([Figure 6 on page 13](#)).
18. Verify proper operation of the module.

Updating Software with a MicroSD Card

The 8972PX modules have been equipped with a microSD socket (J2) located on the front of the module to accept a microSD flash memory card for updating software (Figure 4). Using this method requires the purchase of microSD hardware by the customer.

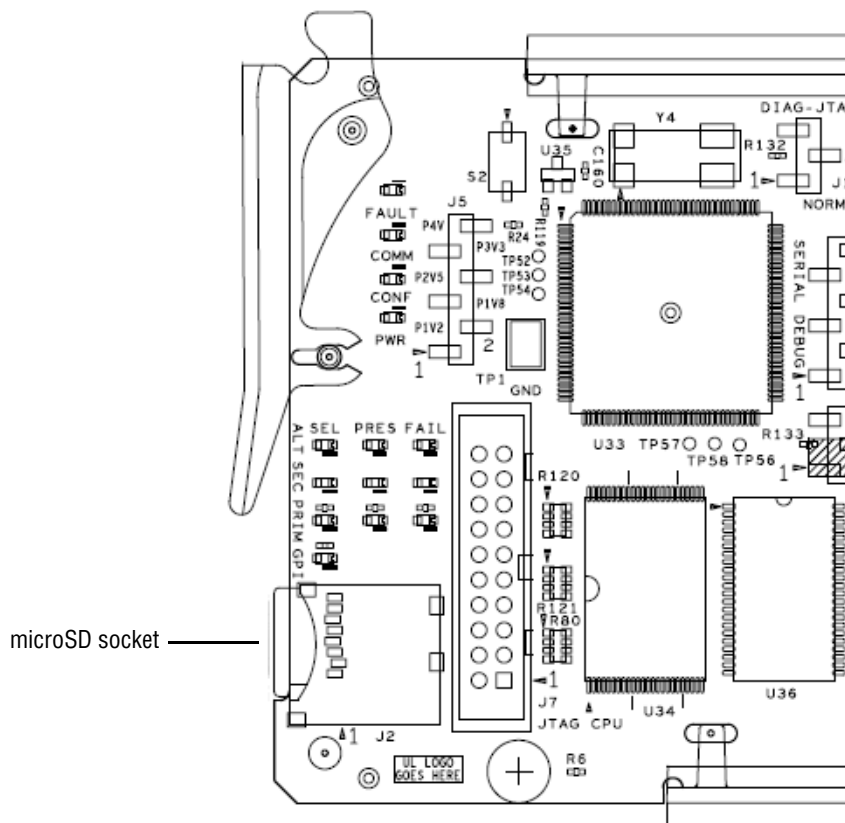
The microSD is a standard flash memory card format commonly used in cell phone and digital cameras for storage. The benefit of this socket is to save time in loading software to modules and ease of software upload.

Required Components

The required components for doing this method are the following:

- USB SD/MMC card reader for connecting to a PC to load the .upd software file onto the microSD card in the adapter. Any type of card reader can be used.
- Any TransFlash card with at least 256Mb of memory and an adapter for inserting the TransFlash card into the card reader.

Figure 4. MicroSD Socket



MicroSD Card Update Procedure

Follow the steps below to update your software:

Note Use standard anti-static precautions when handling these devices.

1. Locate the module software for the 8972PX update on the Thomson Grass Valley ftp server at this link:

<ftp://ftp.thomsongrassvalley.com/modular/8900/8972PX/v1.1.1>

1. In the 8972PX/v1.1.1 module folder, find the .upd files for this update as listed below:
 - 8972PX_v1.1.1.upd
2. Copy the appropriate .upd file for the modules you wish to update into a folder on your PC desktop.
3. Slide the TransFlash card into the TransFlash adapter.
4. Insert the adapter into the card reader with the adapter label facing up and snap the cover back into place.
5. Remove the cover from the USB connector end of the card reader and attach the USB card reader to a USB port on your PC.
6. Browse to this card reader drive device on your PC and copy the .upd files provided to the card reader drive.
7. On the card reader drive, remove any previous update files for 8972PX software. The 8972PX_v1.1.1.upd should be the only 8972PX file.

Note You may have a number of different .upd files on the flash card but you may not have two of the same module type files (8972PX_1.1.0.upd and 8972PX_1.1.1.upd for example).

8. Remove the card reader from the PC USB port.
9. Remove the adapter from the card reader.
10. Carefully remove the TransFlash card from the adapter, pull the 8972PX module out of the frame and place the SD card into the socket on the front of the module so the label side is to the outside as shown in [Figure 5 on page 12](#).
11. Insert the module back into the frame to reboot and start the update process.

Note If the module does not recognize the microSD card or does not reboot, use the NetConfig method described in [Using NetConfig to Update Software on page 6](#).

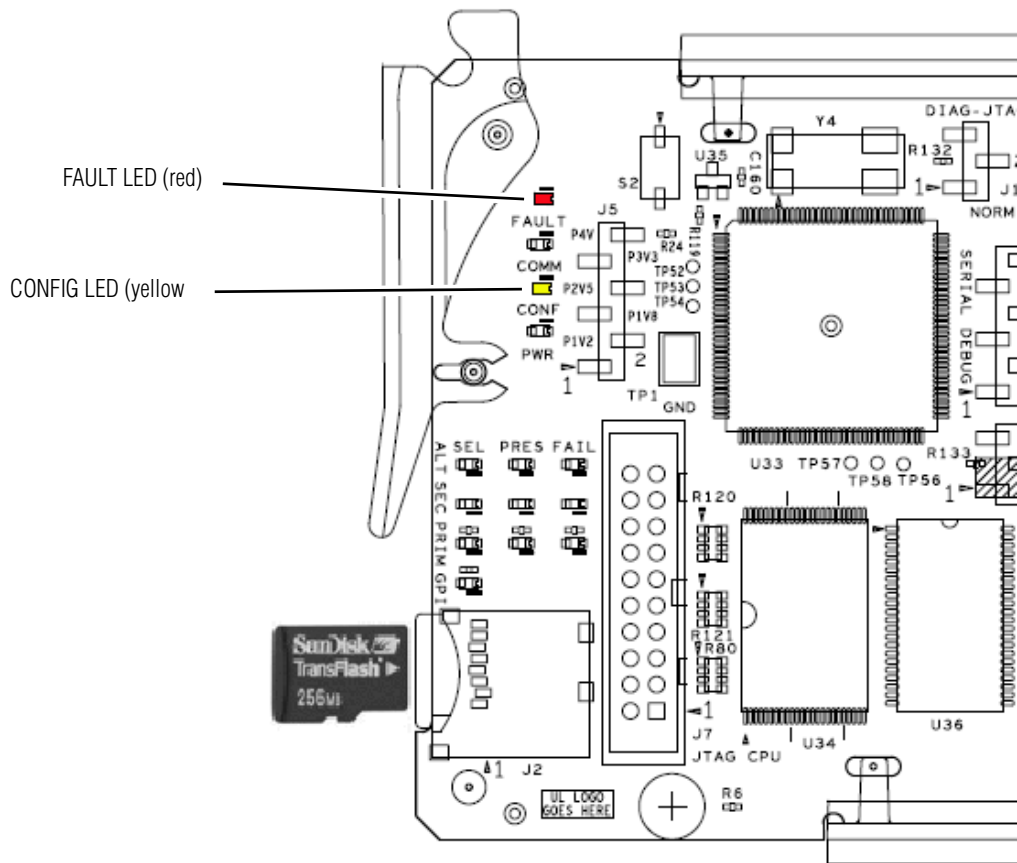
During the module reboot, when a card is inserted in the socket, the application will not be loaded to the module. The module will search the card for the correct file types and device class information and load these into the onboard flash memory. This process is automatic and requires no action on your part.

While the boot code is loading the update, the Config LED (Figure 5) on the module will indicate the progress. If the Config LED is lit, the boot code is currently writing the update to flash.

If the FAULT LED begins flashing, a failure to update has occurred. A failure to update can occur when the microSD card cannot be read, no .upd files are found for the module's device class, or multiple files are found for the same module type.


When the Config LED goes off, the update is complete. Remove the module, remove the microSD card, and reinstall the module to return to normal operation.

Figure 5. Insert TransFlash Card into Module Socket



- Once the module has rebooted completely and the Config LED is off, check that the Status web page is similar to the one shown in [Figure 6](#) and verify module operation.

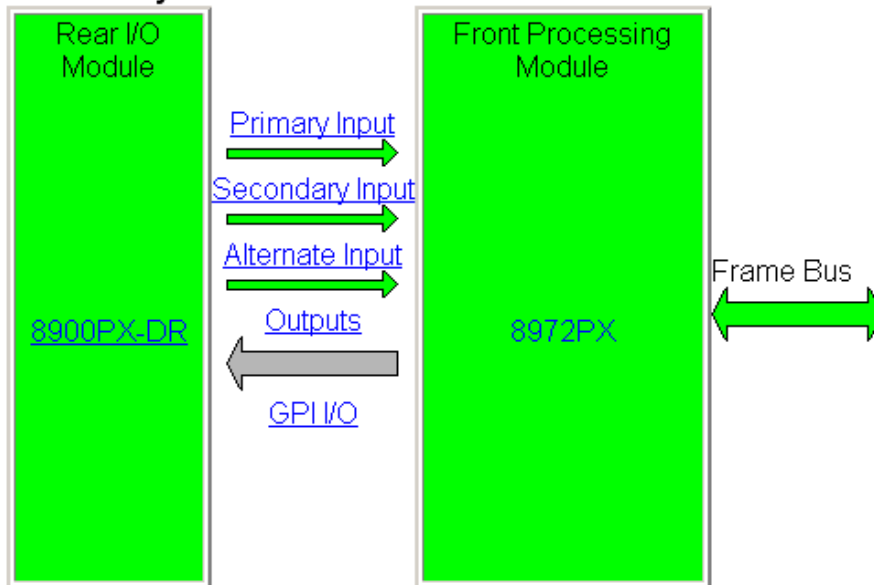
Figure 6. Status Web Page

Status 

Model: [8972PX](#) Description: [HD/SD/ASI Protection Switch](#)
 Frame Location: [not assigned](#) , Slot: [1](#)

Primary Input:	Present	Status: Good	Standard: 480i/59.94
Secondary Input:	Present	Status: Good	Standard: 720p/59.94
Alternate Input:	Present	Status: Good	Standard: 1080i/59.94
Program Output:	Primary Input : Primary In		Standard: 480i/59.94
Backup Candidate:	Secondary Input : Secondary In		Standard: 720p/59.94

Module Physical Structure



Status:

Front Module: [PASS](#)
 Rear Module: [PASS](#)

Front Module:

Part Number: [771-0324-00](#)
 Serial Number: [RN0710295748AA](#)
 Hardware Revision: [00](#)
 Firmware Version: [1.0.1](#)
 Software Version: [1.1.1](#)
 Boot Version: [1.2.0](#)
 Asset Tag:

Update successful

