



8985PRC

SD/HD PROCESSING AMPLIFIER

Release Notes

Software Version 1.1.0

Contacting Grass Valley

International Support Centers	France 24 x 7	+800 8080 2020 or +33 1 48 25 20 20	United States/Canada 24 x 7	+1 800 547 8949 or +1 530 478 4148
Local Support Centers (available during normal business hours)	Asia	Hong Kong, Taiwan, Korea, Macau: +852 2531 3058 Indian Subcontinent: +91 22 24933476 Southeast Asia/Malaysia: +603 7805 3884 Southeast Asia/Singapore: +65 6379 1313 China: +861 0660 159 450 Japan: +81 3 5484 6868		
		Australia and New Zealand: +61 1300 721 495	Central/South America: +55 11 5509 3443	
		Middle East: +971 4 299 64 40 Near East and Africa: +800 8080 2020 or +33 1 48 25 20 20		
	Europe	Belarus, Russia, Tadzikistan, Ukraine, Uzbekistan: +7 095 2580924 225 Switzerland: +41 1 487 80 02 S. Europe/Italy-Roma: +39 06 87 20 35 28 -Milan: +39 02 48 41 46 58 S. Europe/Spain: +34 91 512 03 50 Benelux/Belgium: +32 (0) 2 334 90 30 Benelux/Netherlands: +31 (0) 35 62 38 42 1 N. Europe: +45 45 96 88 70 Germany, Austria, Eastern Europe: +49 6150 104 444 UK, Ireland, Israel: +44 118 923 0499		

Copyright © Grass Valley, Inc. All rights reserved.
This product may be covered by one or more U.S. and foreign patents.

Grass Valley Web Site

The www.grassvalley.com web site offers the following:

Online User Documentation — Current versions of product catalogs, brochures, data sheets, ordering guides, planning guides, manuals, and release notes in .pdf format can be downloaded.

FAQ Database — Solutions to problems and troubleshooting efforts can be found by searching our Frequently Asked Questions (FAQ) database.

Software Downloads — Download software updates, drivers, and patches.



END-OF-LIFE PRODUCT RECYCLING NOTICE

Grass Valley's innovation and excellence in product design also extends to the programs we've established to manage the recycling of our products. Grass Valley has developed a comprehensive end-of-life product take back program for recycle or disposal of end-of-life products. Our program meets the requirements of the European Union's WEEE Directive, the United States Environmental Protection Agency, and U.S. state and local agencies.

Grass Valley's end-of-life product take back program assures proper disposal by use of Best Available Technology. This program accepts any Grass Valley branded equipment. Upon request, a Certificate of Recycling or a Certificate of Destruction, depending on the ultimate disposition of the product, can be sent to the requester.

Grass Valley will be responsible for all costs associated with recycling and disposal, including freight. However, you are responsible for the removal of the equipment from your facility and packing the equipment to make it ready for pickup.



For further information on the Grass Valley product take back system please contact Grass Valley at + 800 80 80 20 20 or +33 1 48 25 20 20 from most other countries. In the U.S. and Canada please call 800-547-8949 or 530-478-4148, and ask to be connected to the EH&S Department. Additional information concerning the program can be found at: www.thomsongrassvalley.com/environment



Contents

- 8985PRC HD/SD Proc Amp Module Release Notes..... 5**
 - Introduction 5
 - System Requirements 5
 - 8985PRC Version 1.1.0 Software Overview..... 6
 - Acquiring Software..... 6
 - Acquiring NetConfig Software 6
 - Acquiring 8900NET Software 7
 - Acquiring 8985PRC Software 7
 - Updating Software With NetConfig..... 8
 - 8985PRC Upgrade Procedure 8

Version **1.1.0**
APRIL 2010

8985PRC HD/SD Proc Amp Module Release Notes

Introduction

This document provides information on the latest release of the software for use with the 8985PRC HD/SD Proc Amp modules. It describes the software update from version 1.0.0 to 1.0.2.

Note The 8985FSP and 8985FS HD/SD Frame Sync/Proc Amp module software update and operation is covered in separate documentation.

Read this document completely before attempting to download the latest software.

This document details:

- System Requirements,
- Version 1.1.0 Software Release ([page 6](#)),
- Acquiring Software ([page 6](#)), and
- Software Updating ([page 8](#)).

System Requirements

Updating any 8985PRC module requires the presence of an 8900NET (Net Card) module in a GeckoFlex frame running software version 4.3.0. Refer to [Acquiring 8900NET Software on page 7](#).

8985PRC Version 1.1.0 Software Overview

Version 1.1.0 features the following new enhancements for the 8985PRC modules:

- Updates software to work with new SFP fiber optic submodules:
 - SFP-13103G-M1DTX (Dual Transmitter)
 - SFP-13103G-M1DRX (Dual Receiver)
 - SFP-13103G-M1TRX (Transceiver)

Note The older version SFPs (1310NM-DRL, 1310NM-DTL, and 1310NM-TRL) can still be used with this software, but the newer version SFPs can only be used when version 1.1.0 is installed on the 8985PRC.

Acquiring Software

The following software is required for this update:

- NetConfig, a networking application from Grass Valley, must be used for updating software. Use the latest version of NetConfig (version 2.0.10 as of this printing) available free of charge from the Grass Valley ftp site.
- The 8900NET module must be running version 4.3.0 for proper software updating. To update, refer to [Acquiring 8900NET Software on page 7](#).
- The latest version 8985PRC software is version 1.1.0. To acquire 8985PRC software, refer to [Acquiring 8985PRC Software on page 7](#).

Acquiring NetConfig Software

If you do not have NetConfig or the latest version (version 2.0.10 as of this printing), you can download it from the Grass Valley ftp site at this URL:

<ftp://ftp.grassvalley.com/router/NetConfig/>

1. Right-click on the latest NetConfig link to download the zipped file to the C:\temp folder or other convenient location on your PC.
2. Extract the zipped files onto your local drive:
3. Double-click on the NetConfig.EXE file to install NetConfig.

Note Installing NetConfig into the default location given in the install script (C:\Programs\Grass Valley Group) is recommended for future NetConfig and module software updates.

Acquiring 8900NET Software

Updating this version of 8985PRC software requires the use of an 8900NET module running software version 4.3.0 or later. This version of 8900NET software is available from the Grass Valley ftp site free of charge at the following location:

<ftp://ftp.grassvalley.com//modular/8900/8900NET>

To download the latest 8900NET software, do the following:

1. Select the 8900 Series link.
2. Select the link to the latest 8900NET Interface module software.
3. If you are updating from an earlier version than 3.2.0, use the .bin file and the FTP Server procedure described in detail in the *8900NET Release Notes* available on-line.
4. Use the NetConfig Networking Application option to update from version 3.2.2 to version 4.3.0 with the .fld file.

Acquiring 8985PRC Software

The latest software release for the 8985PRC module is available from the Grass Valley ftp server as described below.

Note The 8985FSP/FS HD/SD Frame/Sync Proc Amp module software update for version 1.3.2 is covered in separate release notes under the 8985FSP and 8985FS module links.

To download the latest software for the 8985PRC module, do the following:

1. Select the following link to the ftp server.

<ftp://ftp.grassvalley.com/modular/8900/8985PRC/1.1.0>

2. Right-click on all of the 8985PRC .fld and .xml files provided to download them to the C:\temp folder or other convenient location on your PC.

Updating Software With NetConfig

To update with NetConfig you must have the following:

- PC with NetConfig Networking application installed (version 2.0.10 is the latest as of this printing),
- IP connection between the frame containing the 8900 modules and your PC, and
- 8900NET module in the GeckoFlex frame with software 4.3.0 or later.

Note After updating software you will need to recall factory defaults. Record your parameter settings. You can also try saving your current settings into a user settings file to reload after the software update.

8985PRC Upgrade Procedure

Begin the upgrade procedure by moving the 8985PRC files you have downloaded from the ftp site into the correct NetConfig directories.

Note This update requires that factory defaults be recalled after the download is completed. This will return the module to the factory default settings. Be sure to note your current settings by writing them down or taking screen shots of each web page before doing this download.

1. You should have the following files downloaded to your PC:

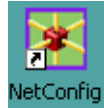
- 8985PRC_1.1.0.xml
- 8985PRC_1.1.0_FW_HD50_HD24.fld
- 8985PRC_1.1.0_FW_HD59.94_SD.fld
- 8985PRC_BOOT_2.0.1.fld

2. Copy the 8985PRC software download files into the main NetConfig directory on your PC. This is normally in the default location in C:\Program Files\Grass Valley Group\NetConfig.

If you have installed NetConfig in another location, find the location of the NetConfig directory by right-clicking on the NetConfig shortcut. Select **Properties** and note the location in the **Start In** field. Download the package to the NetConfig directory.

3. In the main NetConfig directory, locate a folder named **modular**. If this folder does not exist, create a folder called **modular** in the main NetConfig directory.
4. Move the .fld files you copied into the main NetConfig directory into this **modular** directory.
5. Verify that the .xml file is in the main NetConfig directory (not in the **modular** directory).

Note NetConfig reads each .xml file in its main directory and navigates to the directory given in these files to find the .fld files available. There may be a number of .xml and .fld files in your NetConfig directory for other modular products. These will not interfere with the update.



6. Open NetConfig by double clicking on the NetConfig icon.

Note If you have not used NetConfig before, refer to the *NetConfig Instruction Manual* included during installation in the main NetConfig directory in PDF format (NetConfig.pdf).



7. Click on the **Load SW** button on the top of the NetConfig toolbar.

8. This will bring up the Load Software screen (Figure 1). (This screen represents NetConfig version 2.0.10, the latest version available as of this printing.)

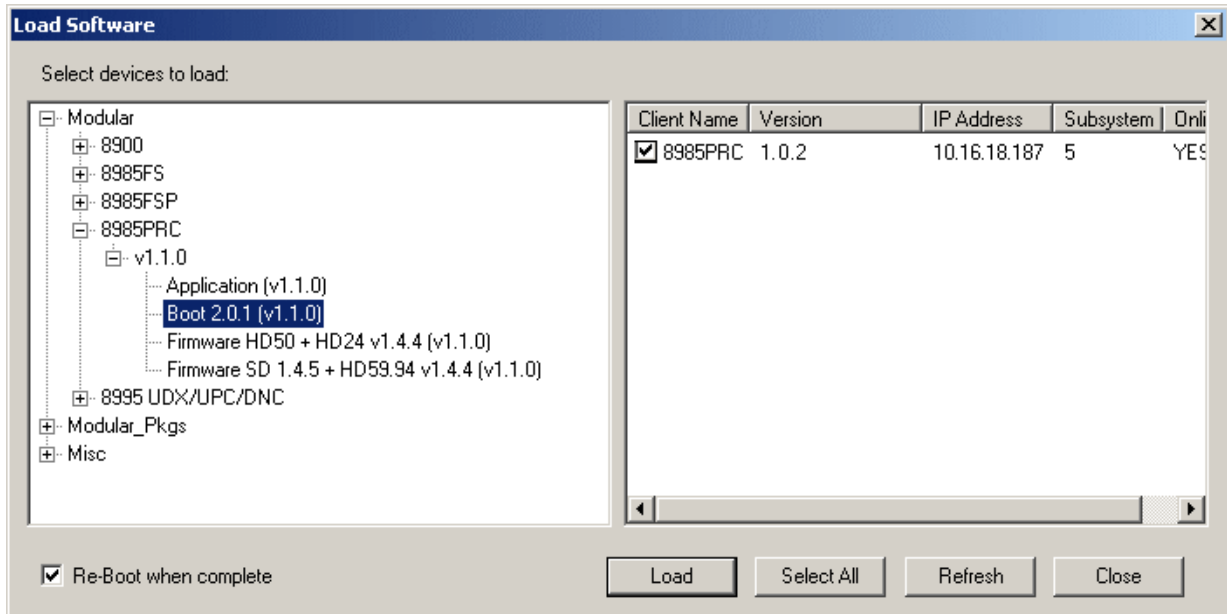
9. Open the modular directory by selecting the +.

10. Now select the 8985PRC directory by selecting the +.

11. Open the 1.1.0 directory by selecting the +. This will bring up the software files shown in Figure 1.

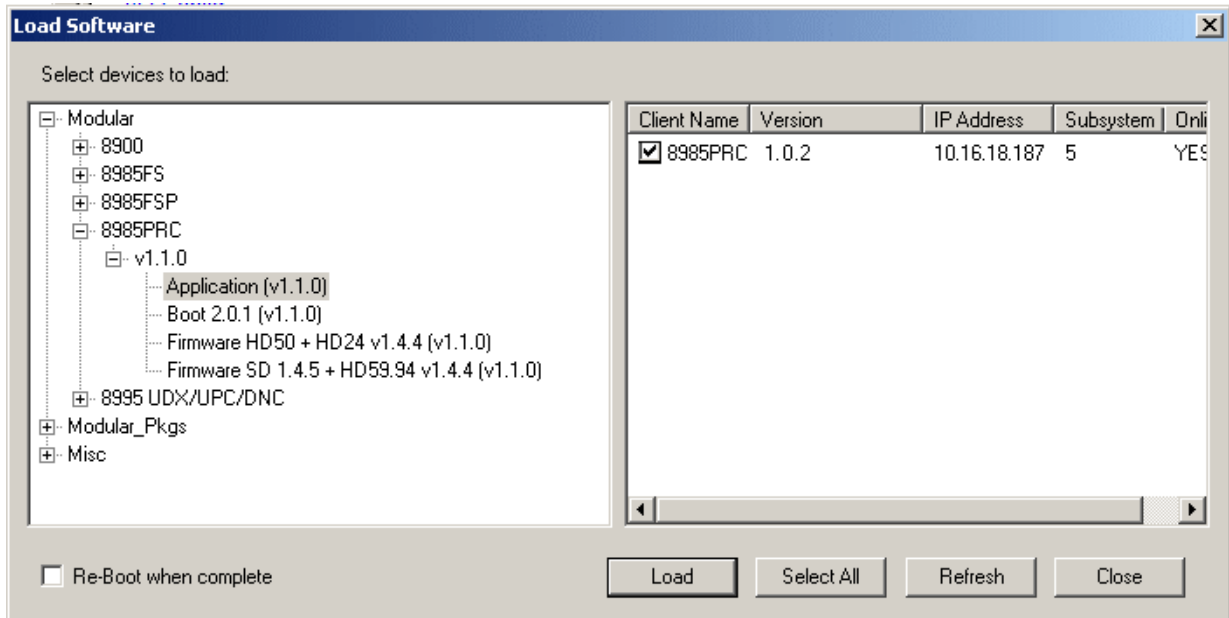
12. Select the **Boot 2.0.1 (v1.1.0)**. All 8985PRC modules accessible on this subnet should be displayed in the window on the right with their current software version, frame IP Address, Subsystem, and Online status.

Figure 1. 8985PRC Boot Load



13. Check the 8985PRC module(s) you need to update in the Client Name list on the right. You may update all devices at once by clicking on the **Select All** button to check all boxes. Or you may only check the corresponding checkbox next to the specific modules you wish to update.
14. Check the **Re-Boot when complete** checkbox in the lower left corner.
15. Press the **Load** button to load this Boot file to all selected modules.
16. The modules should re-boot. Check that the Boot load has been successful by looking at the 8985PRC Status web page ([Figure 7 on page 14](#)).
17. Now select the file labeled **Application (v1.1.0)** file under the 8985PRC list and check the same Client name checkboxes you updated for the boot code (or use the **Select All** button if you are updating all modules).

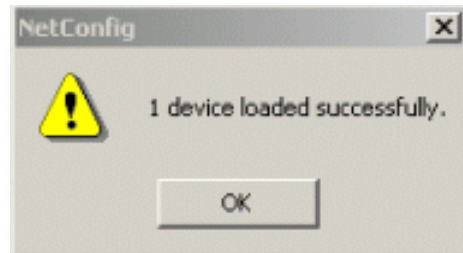
Figure 2. 8985PRC Application Load



18. Uncheck the **Re-Boot when complete** checkbox in the lower left corner of the Load Software screen. This file and the firmware files do not need to be rebooted.
19. Press the **Load** button to load this file to all selected modules.

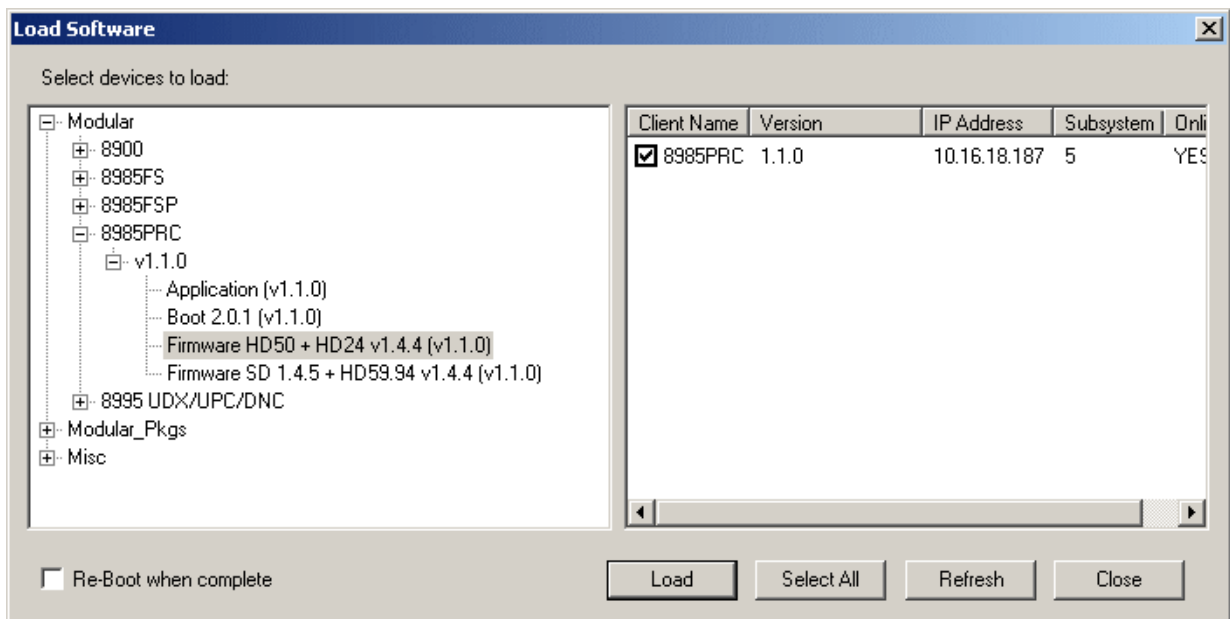
20. If the load has been successful, a popup will appear as shown in [Figure 3](#). Click the **OK** button.

Figure 3. Load Successful Popup



21. Now select the file labeled **Firmware HD50 + HD24 v1.44 (v1.1.0)** under the 8985PRC list as shown in [Figure 4](#). Note that the Version will now read 1.1.0 after the application load. Check the same Client name checkboxes you updated for the boot and application code (or use the **Select All** button if you are updating all modules).

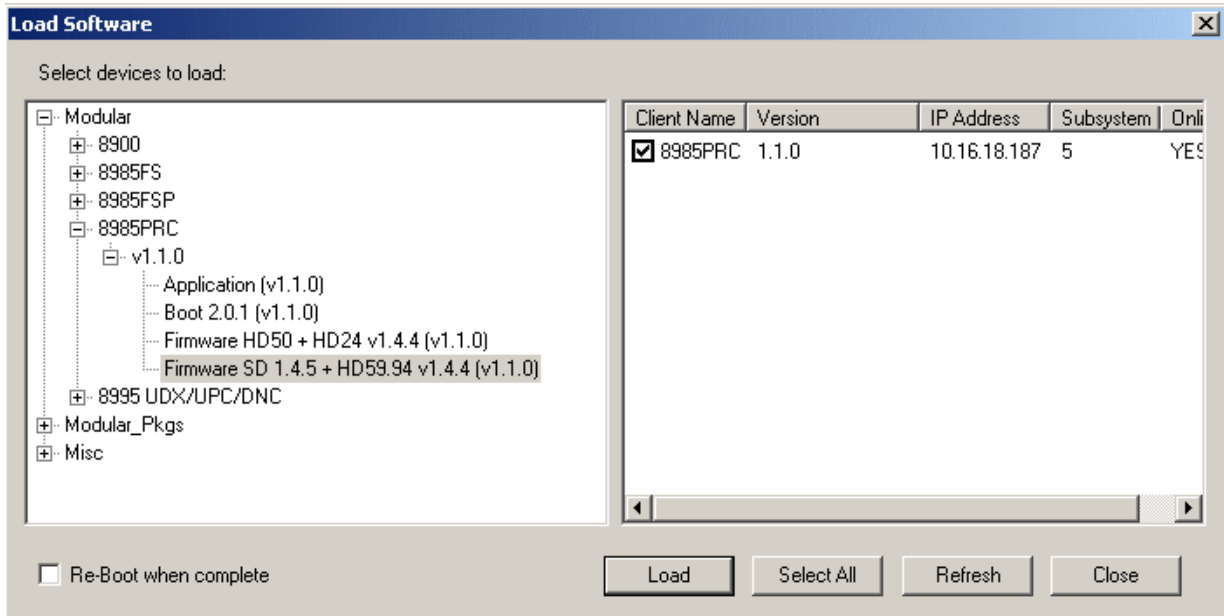
Figure 4. 8985PRC Firmware Load



22. Uncheck the **Re-Boot when complete** checkbox in the lower left corner of the Load Software screen. Do not reboot.
23. Press the **Load** button to load this file to all selected modules.

24. Now select the file labeled **Firmware SD 1.4.5 + HD59.94 v1.44 (v1.1.0)** under the 8985PRC list as shown in [Figure 5](#). Note that the Version will now read 1.1.0 after the application load. Check the same Client name checkboxes you updated for the previous updates (or use the **Select All** button if you are updating all modules).

Figure 5. 8985PRC Firmware Load

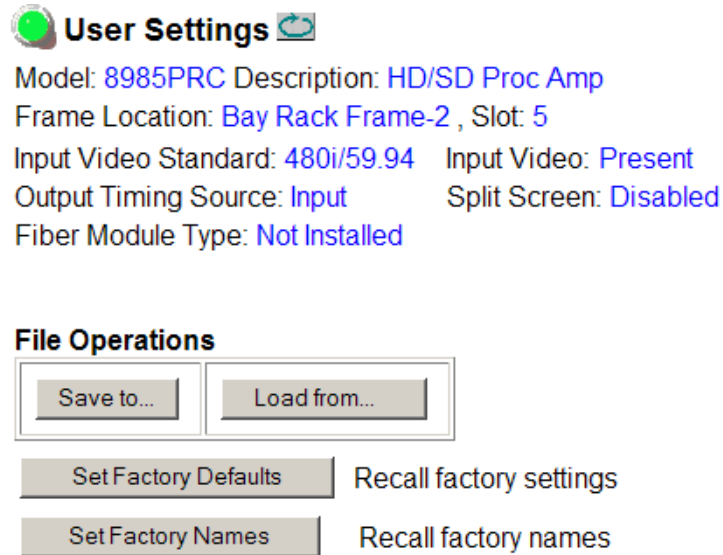


25. Uncheck the **Re-Boot when complete** checkbox in the lower left corner of the Load Software screen. Do not reboot.
26. Press the **Load** button to load this file to all selected modules.
This completes the update.
27. Check the software version is now at 1.1.0 and the Boot is at 2.0.1 on the Status web page ([Figure 7 on page 14](#)).

Note Be sure to record your current module parameters before recalling factory defaults in the next step.

28. Go to the User Setting web page and recall factory settings and names by selecting the **Set Factory Defaults** and **Set Factory Names** buttons to reset all parameters on the module.

Figure 6. 8985PRC User Setting Web Page



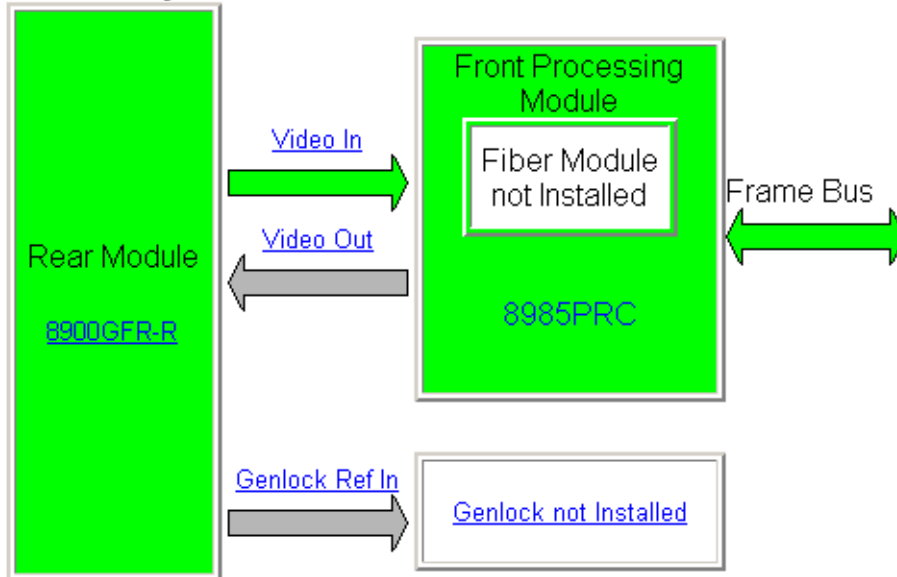
29. Verify proper operation of the module.

Figure 7. Verify Software Update



Model: [8985PRC](#) Description: [HD/SD Proc Amp](#)
Frame Location: [not assigned](#) , Slot: [8](#)
Input Video Standard: [1080i/59.94](#) Input Video: [Coax Input : Present](#)
Output Timing Source: [Input](#) Split Screen: [Disabled](#)

Module Physical Structure



Fiber Module is not installed
Genlock Module is not installed

Status:

Front Module: [PASS](#)
Rear Module: [PASS](#)
Genlock Module: [EMPTY](#)
Fiber Module: [EMPTY](#)

Front Module:

Part Number: [691-0079----](#)
Serial Number: [-----](#)
Hardware Revision: [---](#)
Firmware Image 1 Version: [inactive](#)
Firmware Image 2 Version: [1.4.5](#)
Firmware Image 3 Version: [inactive](#)
Firmware Image 4 Version: [inactive](#)
Software Version: [1.1.0](#)
Boot Version: [2.0.1](#)
Asset Tag:

Verify software and boot version