

KAM-HD-MULTI

KAMELEON HD/SD MODULE SERIES

Release Notes

SOFTWARE VERSION 3.0.1

071844100
NOVEMBER 2005

the most watched worldwide

Contacting Grass Valley

Region	Voice	Fax	Address	Web Site
North America	(800) 547-8949 Support: 530-478-4148	Sales: (530) 478-3347 Support: (530) 478-3181	Grass Valley P.O. Box 599000 Nevada City, CA 95959-7900 USA	www.thomsongrassvalley.com
Pacific Operations	+852-2585-6688 Support: 852-2585-6579	+852-2802-2996		
U.K., Asia, Middle East	+44 1753 218 777	+44 1753 218 757		
France	+33 1 45 29 73 00			
Germany, Europe	+49 6150 104 782	+49 6150 104 223		

Copyright © Grass Valley. All rights reserved.

Grass Valley Web Site

The www.thomsongrassvalley.com web site offers the following:

Online User Documentation — Current versions of product catalogs, brochures, data sheets, ordering guides, planning guides, manuals, and release notes in .pdf format can be downloaded.

FAQ Database — Solutions to problems and troubleshooting efforts can be found by searching our Frequently Asked Questions (FAQ) database.

Software Downloads — Software updates, drivers, and patches can be downloaded.

Contents

- KAM-HD-MULTI Function Module Release Notes** 5
 - Introduction 5
 - System Requirements 5
 - Version 3.0.1 Software Release 6
 - KAM-HD-MULTI Function Module Features 6
 - Unresolved Software Issues 7
 - Acquiring and Updating Software 8
 - Acquiring NetConfig Software 8
 - Acquiring 2000NET Software 8
 - Acquiring KAM-HD-MULTI Software 9
 - Updating Software With NetConfig 9
 - NetConfig Upgrade Procedure 9
 - Accessing Reference Documents 12

KAM-HD-MULTI Function Module Release Notes

Introduction

This document provides information on the latest release of the software for use with the following modules in the Kameleon HD series:

- KAM-HD-MULTI Function Module

Read this document completely before attempting to download the latest software.

This document details:

- System requirements ([page 5](#)),
- Version 3.0.1 Software Release Features ([page 6](#)),
- Unresolved Software Issues ([page 7](#)),
- Acquiring and Installing software ([page 8](#)), and
- Accessing Reference Documents ([page 12](#)).

System Requirements

Operation of the KAM-HD-MULTI Function modules in Kameleon 2000 Series frames has the following hardware and software requirements:

- Modules must be installed in a 2000T1DNG or 2000T3DNG Kameleon 2000 Series frame containing a 2000GEN module.
- The frame must have a 2000NET module with assembly number 671-5231-01 or later running software version 4.0.0 or later.
- Installation of this latest release of software requires a Kameleon HD module with assembly number 671-6514-20. Other Kameleon HD module assemblies cannot be updated with this release.

Version 3.0.1 Software Release

Version 3.0.1 provides functionality for the KAM-HD-MULTI module in the Kameleon HD Series.

KAM-HD-MULTI Function Module Features

Features offered in the release of this new module include:

- SD video rates of:
 - 480i/59.94 or 576i/50
- HD video rates of:
 - HD 59.94: 1080i or 720p,
 - HD 50: 1080i or 720p, and
 - HD 24: 1080sf or 1080p
- HD/SD video processing for brightness, contrast, saturation and hue,
- Frame synchronization with H and V timing delay adjustments,
- Split Screen (horizontal or vertical) output mode,
- Auto and Manual Freeze controls,
- HD/SD color correction and gamma adjustments,
- Color bars test signal generator,
- Two different rear module types:
 - KAM-HD-MULTI-BR with balanced AES/EBU audio connectors, or
 - KAM-HD-MULTI-UR with unbalanced AES/EBU connectors (includes audio breakout cables),
- Audio inputs and outputs on the rear modules are configurable as one of the following:
 - 8 inputs/0 outputs
 - 4 inputs/4 outputs
 - 0 inputs/8 outputs
- Four Audio Preset Configs for quick setup of audio configuration,
- Up to eight streams of input audio selectable for synchronization, then multiplexed into the output video stream and/or sent to available AES audio outputs on the rear module,

- Four streams of the selected audio may be paired and processed for multiplexing into the output audio stream and/or sent to available AES audio outputs,
- Dolby E bypass,
- Newton Modular Control Panel interface,
- NetConfig support, and
- SNMP support – remote monitoring.

Unresolved Software Issues

Take note of the following unresolved software issues when using this software release:

- (60311) Consumer Mode audio inserted into the AES inputs reports an AES Error indication on the Audio Input Status web page. For Consumer Mode only, this error can be ignored as this type of error can not currently be reset.
- (61334) When the audio delay between two audio streams in a channel is set to maximum (one stream has 0 delay, the other stream is set to 5140 ms of delay, the maximum) and the video input rate or output timing source is changed, the two audio streams will be out of phase for about 25 seconds before returning to normal.
- When an AES stream is being processed through the audio proc amp, you must uncheck the **AES C/U/V Bits Pass Through** checkbox for that stream. CUV bits must be set to regenerate when using the audio proc amp in a stream. If it is not unchecked, the CUV bits may be all zeros which could cause down stream equipment issues.

Acquiring and Updating Software

The KAM-HD-MULTI software upgrade package for this release is available from the Grass Valley public FTP site. NetConfig, a networking application option available from Grass Valley, must be used to update this software. Use the latest version of NetConfig, version 2.0.6.

Note Please note the [System Requirements on page 5](#) before downloading software to an existing KAM-HD-MULTI module.

Acquiring NetConfig Software

If you do not have NetConfig or the latest version, you can download it from the Thomson Grass Valley ftp site at this URL:

<ftp://ftp.thomsongrassvalley.com/pub/router/NetConfig/Version 2.0.6/>

1. Right-click on the latest NetConfig link to download the zipped file to the C:\temp folder or other convenient location on your PC.
2. Extract the zipped files onto your local drive:
3. Double-click on the NetConfig.EXE file to install NetConfig.

Note Installing NetConfig into the default location given in the install script (C:\Programs\Grass Valley Group) is recommended for future NetConfig and module software updates.

Acquiring 2000NET Software

The latest software for the 2000NET module is available from the Thomson Grass Valley ftp site at the following URL:

<ftp://ftp.thomsongrassvalley.com/pub/modular/2000/2000NET>

To download the latest 2000NET software, do the following:

4. Select the 2000 Series link.
5. Select the link to the latest 2000NET Interface module software.
6. If you are updating from an earlier version than 3.2.0, use the .bin file and the FTP Server procedure described in detail in the *2000NET Instruction Manual* available on-line.
7. Use the NetConfig Networking Application option to update from version 3.2.2 to version 4.0.0 with the .fld file.

Acquiring KAM-HD-MULTI Software

To acquire the latest Kameleon software for the KAM-HD-MULTI Function module, connect to the Grass Valley public FTP site at this location:

`ftp://ftp.thomsongrassvalley.com/pub/modular`

1. Create a temporary folder on your C:\ drive if one does not exist.
2. Select the link to **Kameleon HD**. From this directory select the link to **KAM-HD-MULTI**.
3. Download the following files to the C:\temp directory on your PC:
 - KAM-HD-MULTI_V3.0.1.fld
 - KAM-HD-MULTI_V3.0.1.sw2 (required for NetConfig download)

Updating Software With NetConfig

To update with NetConfig you must have the following:

- PC with NetConfig Networking application installed (version 2.0.6 recommended),
- IP connection between the frame containing the Kameleon modules and your PC, and
- 2000NET module in the Kameleon frame with software 4.0.0 or later.

NetConfig Upgrade Procedure

Begin the upgrade procedure by moving the KAM-HD-MULTI files you have downloaded into your Temp directory into the correct NetConfig directories.

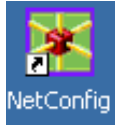
1. Copy all KAM-HD-MULTI software download files from the C:\temp directory into the main NetConfig directory on your PC. This is normally in the default location in C:\Program Files\Grass Valley Group\NetConfig.

If you have installed NetConfig in another location, find the location of the NetConfig directory by right-clicking on the NetConfig shortcut. Select **Properties** and note the location in the **Start In** field. Download the package to the NetConfig directory.

2. In the main NetConfig directory, locate a folder named **modular**. If this folder does not exist, create a folder called **modular** in the main NetConfig directory.
3. Move the .fld file you copied into the main NetConfig directory into this **modular** directory.

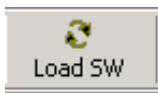
4. Verify that the KAM-HD-MULTI_V3.0.1.sw2 file is in the main NetConfig directory (not in the **modular** directory).

Note NetConfig reads each .sw2 file in its main directory and navigates to the directory given in these files to find the .fld files available. There may be a number of .sw2 and .fld files in your NetConfig directory for other modular products. These will not interfere with the update.



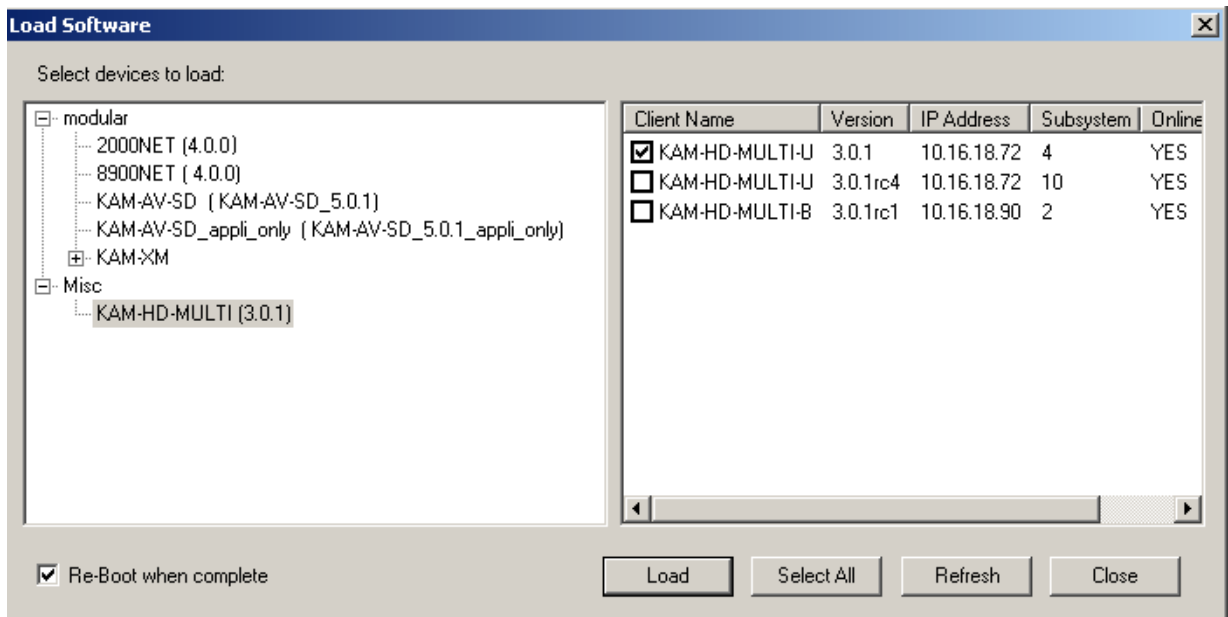
5. Open NetConfig by double clicking on the NetConfig icon shown at left.

Note If you have not used NetConfig before, refer to the *NetConfig Instruction Manual* included during installation in the main NetConfig directory in pdf format (NetConfig.pdf).



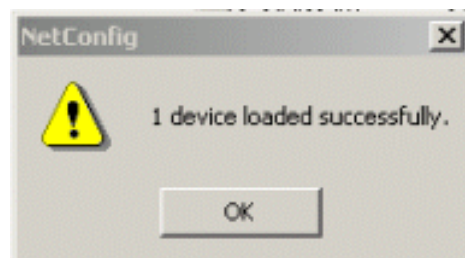
6. Click on the **Load SW** button on the top of the NetConfig toolbar.
7. This will bring up the Load Software screen ([Figure 1 on page 11](#)). This screen shows NetConfig version 2.0.6, the recommended version.
8. Find the KAM-HD-MULTI (3.0.1) on the left of the screen in the **Misc** directory.
9. Highlight the KAM-HD-MULTI (3.0.1) selection in the list. All KAM-HD-MULTI modules accessible on this subnet will be displayed in the window on the right with their current software version and frame IP Address.
10. Find the KAM-HD-MULTI module you are updating in the Client Name list. Check the corresponding checkbox in the window on the right to indicate you wish to update this device.
11. Check the **Re-Boot when complete** checkbox in the lower left corner of the screen.

Figure 1. NetConfig Load Software Screen – .fld Download



12. Click on the **Load** button to begin the update.
13. If the load has been successful, a popup will appear as shown in [Figure 2](#). Click the **OK** button.

Figure 2. Load Successful Popup



14. Allow the reboot to complete.
15. Complete the same steps for the rest of the KAM-HD-MULTI modules listed, allowing the reboot to complete each time.
16. After updating, go to the E-MEM web page of each module and select the Recall factory setting **Recall** button.
17. Verify proper operation of the module.
18. Complete operation of this new module is described in the *KAM-HD-MULTI Function Instruction Manual*, available in hard copy or on-line in [Accessing Reference Documents on page 12](#).

Accessing Reference Documents

For on-line access to any of the reference documents referred to in these Release Notes, return to the Thomson Grass Valley home page and select the links described below.

- On-line access to instruction manuals in PDF format is available at <http://www.thomsongrassvalley.com/docs>.

For this module, select Broadcast Products/Modular Products/Kameleon HD Modules, then select the KAM-HD-MULTI Function Module link.

All of the documents referred to may also be ordered in hard copy from any Thomson Grass Valley Sales or Customer Service source. Refer to [Contacting Grass Valley](#) at the front of this document.