



Aurora Browse Version 6.3.2 Release Notes and Installation Instructions

These release notes contain the most recent information and supersede previous publications, as of February 6, 2008. Check the Grass Valley website at www.thomsongrassvalley.com/docs for an updated version that contains additional important information.

Table of Contents

<i>Grass Valley Product Support</i>	2
<i>About this document</i>	3
<i>Aurora Browse 6.3.2 features</i>	3
<i>What's new in 6.3.2</i>	3
<i>Changes in previous releases</i>	3
<i>Aurora Browse version compatibility</i>	5
<i>Installing software on new Aurora Browse systems</i>	6
<i>Browse system upgrade considerations</i>	7
<i>Upgrading Aurora Browse systems</i>	8
<i>Troubleshooting Aurora Browse client PCs</i>	23
<i>Configuring a Windows Server 2003 MediaFrame server</i>	25
<i>Operation considerations</i>	26
<i>3rd party configuration considerations</i>	26
<i>Known problems</i>	27

Copyright © 2007 Grass Valley, Inc. All rights reserved. Printed in the United States of America. Portions of software © 2000 – 2007, Microsoft Corporation. All rights reserved. This document may not be copied in whole or in part, or otherwise reproduced except as specifically permitted under U.S. copyright law, without the prior written consent of Grass Valley, Inc., P.O. Box 59900, Nevada City, California 95959-7900. This product may be covered by one or more U.S. and foreign patents.

Product options and specifications subject to change without notice. The information in this manual is furnished for informational use only, is subject to change without notice, and should not be construed as a commitment by Grass Valley, Inc. Grass Valley, Inc. assumes no responsibility or liability for any errors or inaccuracies that may appear in this publication.

Grass Valley, K2, Aurora, Turbo, M-Series, Profile, Profile XP, NewsBrowse, NewsEdit, NewsQ, NewsShare, NewsQ Pro, and Media Manager are either registered trademarks or trademarks of Grass Valley, Inc. in the United States and/or other countries. Grass Valley, Inc. products are covered by U.S. and foreign patents, issued and pending. Additional information regarding Grass Valley, Inc.'s trademarks and other proprietary rights may be found at www.thomsongrassvalley.com. Other trademarks and logos used in this document are either registered trademarks or trademarks of the manufacturers or vendors of the associated products, such as Microsoft® Windows® operating system, Windows Media® player, Internet Explorer® internet browser, and SQL Server™. QuickTime and the QuickTime logo are trademarks or registered trademarks of Apple Computer, Inc., used under license therefrom.

Grass Valley Product Support

To get technical assistance, check on the status of a question, or to report new issue, contact Grass Valley Product Support via e-mail, the Web, or by phone or fax.

Web Technical Support

To access support information on the Web, visit the product support Web page on the Grass Valley Web site. You can download software or find solutions to problems by searching our Frequently Asked Questions (FAQ) database.

World Wide Web: <http://www.thomsongrassvalley.com/support/>

Technical Support E-mail Address: gvgtechsupport@thomson.net.

Phone Support

Use the following information to contact product support by phone during business hours. Afterhours phone support is available for warranty and contract customers.

International (France)	+800 80 80 20 20 +33 1 48 25 20 20	Italy	+39 02 24 13 16 01 +39 06 87 20 35 42
International (United States, Canada)	+1 800 547 8949 +1 530 478 4148	Belarus, Russia, Tadzikistan, Ukraine, Uzbekistan	+7 095 258 09 20 +33 (0) 2 334 90 30
Hong Kong, Taiwan, Korea, Macau	+852 2531 3058	Indian Subcontinent	+91 11 515 282 502 +91 11 515 282 504
Australia, New Zealand	+61 1300 721 495	Germany, Austria, Eastern Europe	+49 6150 104 444
Central, South America	+55 11 5509 3440	Near East, Africa	+33 1 48 25 20 20
China	+861 066 0159 450	Netherlands	+31 (0) 35 62 38 421
Belgium	+32 (0) 2 334 90 30	Northern Europe	+45 45 96 88 70
Japan	+81 3 5484 6868	Singapore	+65 6379 1313
Malaysia	+603 7805 3884	Spain	+41 487 80 02
Middle East	+971 4 299 64 40	UK, Ireland, Israel	+44 118 923 0499

Authorized Support Representative

A local authorized support representative may be available in your country. To locate the support representative for your country, visit the product support Web page on the Grass Valley Web site.

About this document

This document contains the latest information about the Aurora Browse system. For the complete description and instructions for Aurora Browse, read the Aurora Browse application online Help and the *Aurora Browse Installation and Configuration Guide*.

Aurora Browse 6.3.2 features

Aurora Browse creates various low-resolution proxy formats for high-resolution material, both HD and SD. The high-resolution material resides on a K2 system. You can use the Edit LD application to edit stories using the low-resolution proxy, which is accessible from the journalist's desktop. Aurora Browse also provides a rich metadata search engine that allows you to search for clips using various criteria.

Aurora Browse integrates with the Aurora Edit system for further editing. Aurora Browse can also pull high-resolution video from a video server and assemble an on-air quality sequence.

You can archive and restore high-resolution material. Archived assets are still visible from the Edit LD application.

What's new in 6.3.2

This version of Aurora Browse software includes several improvements, in addition to correcting some problems that were present in earlier releases.

Support for SGL version 6 — Aurora Browse is now compatible with version 6 of the SGL FlashNet archive product.

Changes in previous releases

The following sections describe the changes in past releases.

Version 6.3.0

Support for 720p — With this release, Aurora Browse creates proxy for HD 720p material. Features that support HD in the Aurora Browse application and the Edit LD application apply to 720p assets as well.

AxiomTek PC not supported — The AxiomTek PC is no longer supported as a MediaFrame server platform. This machine was a part of some early NewsBrowse systems. If you use a AxiomTek PC as your Aurora Browse (MediaFrame) server, you must upgrade to the XRE-2 platform or the HAFT-2 platform as part of the upgrade to Aurora Browse 6.3.

Dell platforms — The following platforms are now shipping with updated models:

- Dell 860 replaces Dell 850 as XRE-3 platform
- Dell 1950 replaces Dell 1850 as XRE-4 platform
- Dell 2950 replaces Dell 2850 as XRE-2 platform

K2 Nearline — The K2 Nearline Storage System is supported.

Browse-controlled ingest not supported — This release is not compatible with the legacy Profile XP and Open SAN system architecture, where the Browse application controls ingest. Ingest Scheduler and other features related to ingesting and/or recording media with the Browse application are not available. For Browse licensing, the roles of Ingest Manager and Ingest View are not available.

Aurora Browse version compatibility

Versions qualified for compatibility with this 6.3.2 release of Aurora Browse software are summarized in the following tables.

Aurora Browse devices

Aurora Browse devices are compatible with this 6.3.2 release of Aurora Browse software as follows:

Browse device	Component	Version	Comment
MediaFrame server	Windows Operating System	Server 2000 SP4 or Server 2003 SP2	
	SQL Server	2000 or 2005 SP2	Service Pack 2 is required on MediaFrame servers that have SQL 2005.
MDI server	Windows Operating System	Server 2000 SP4 or Server 2003 SP2	
Advanced Encoder	Windows Operating System	Server 2003 SP1	
SmartBin Encoder	Windows Operating System	Server 2003 SP1	
Single-channel encoder	Not supported		
Sequential Encoder	Not supported		
Image Support Server	Not supported		
MediaFrame server on Axiom platform	Not supported		
Router Gateway	Not supported		
NAS on Serial ATA network platform	Not supported		
NAS on Linux Fastora platform	Not supported		

Grass Valley products

Grass Valley products are compatible at the time of this 6.3.2 release of Aurora Browse software as follows:

Component or system	Version	Comments
Aurora Browse Server software	6.3.2.8	
Aurora Browse Encoder software	6.3.0.216	
Aurora Transfer software	6.3.0.4	
Aurora Edit software	6.3.2.30	
Aurora Edit Conform Server software	6.3.2.7	
Aurora Edit SmartBin Service software	6.3.2.30	
Aurora Edit DSM software	6.3.2.30	
Aurora Edit News FTP software	6.3.2.30	
Aurora Edit LD software	6.3.2	
Aurora Ingest software	6.3.2	
Aurora Playout software	6.3.2	
Aurora Core	6.3.2.30	Must be installed on the machine that hosts the News MDI.
K2 system software	3.2.58.832	with SNFS software version 3.0.3b56
Profile XP system software	5.4.9	
UIM	2.1.0.2	
M-Series system software	2.0.13.567	
DIVArchive software	5.10.9.1.0	
FlashNet software	6	Contact FlashNet for specific version information
Avalon software	3.2	
IngestStation	Not supported	
News Q Pro	Not supported	

Installing software on new Aurora Browse systems

Aurora Browse software version 6.3.2 is installed on new Aurora Browse devices as they come from the factory. If you have a new Aurora Browse system, you should not need to install or upgrade software. For general information about Aurora Browse software, refer to the *Aurora Browse Installation and Configuration Guide*.

Browse system upgrade considerations

Browse systems that were built with previous versions of Browse software have special considerations for upgrading to version 6.3.2 software, as follows:

- **Upgrade considerations for systems built with software version 2.7a** — Most of the Browse system devices originally built with version 2.7a or lower are not qualified with version 6.3.2 software. If your system is currently running with version 2.7a or is using one or more devices originally used with version 2.7a, contact Grass Valley Support to determine the steps necessary to upgrade to version 6.3.2 software.
- **Upgrade considerations for systems built with software version 3.1 or 6.0b** — If you have a Browse system originally built with version 3.1 or version 6.0b, depending on the design of your system, you might have some devices that are not supported by version 6.3.2 and so can not be upgraded.

The following devices can not be upgraded to version 6.3.2:

- Single-channel Encoder
- Sequential Encoder
- Image Support Server
- Router Gateway

Also refer to [“Aurora Browse version compatibility” on page 5](#) for a list of compatible devices and their software versions.

If your system uses one or more devices that are not supported by version 6.3.2, your system must be reconfigured before it can be upgraded. For example, a system with Browse controlled ingest to Profile XP/Open SAN using Single-channel Encoders must be reconfigured to use Advanced Encoders instead of Single-channel Encoders.

Systems built only with supported devices may be upgraded to version 6.3.2 using the upgrade procedure in these release notes. Refer to [“Aurora Browse version compatibility” on page 5](#) for the list of compatible devices and their software versions.

NOTE: The Aurora Core software must be installed on the machine that hosts the News MDI. To install Aurora Core, download SetupAuroraCore.exe from the FTP site.

Upgrading Aurora Browse systems

NOTE: *These upgrade instructions assume that current Browse software is at version 3.1 or higher. If you have a lower version of software, contact Grass Valley Support before upgrading.*

The following installation steps provide information specifically for upgrading an Aurora Browse system to version 6.3.2 software. Read the information in these sections carefully before attempting the upgrade.

To upgrade software on the system, work through the following procedures sequentially.

1. [“Prepare for system upgrade”](#)
2. [“Upgrade K2 software”](#)
3. [“Upgrade the MediaFrame server”](#)
4. [“Upgrade the MDI server”](#)
5. [“Upgrade Encoders”](#)
6. [“Restart devices”](#)
7. [“Verify Browse client PC upgrades”](#)

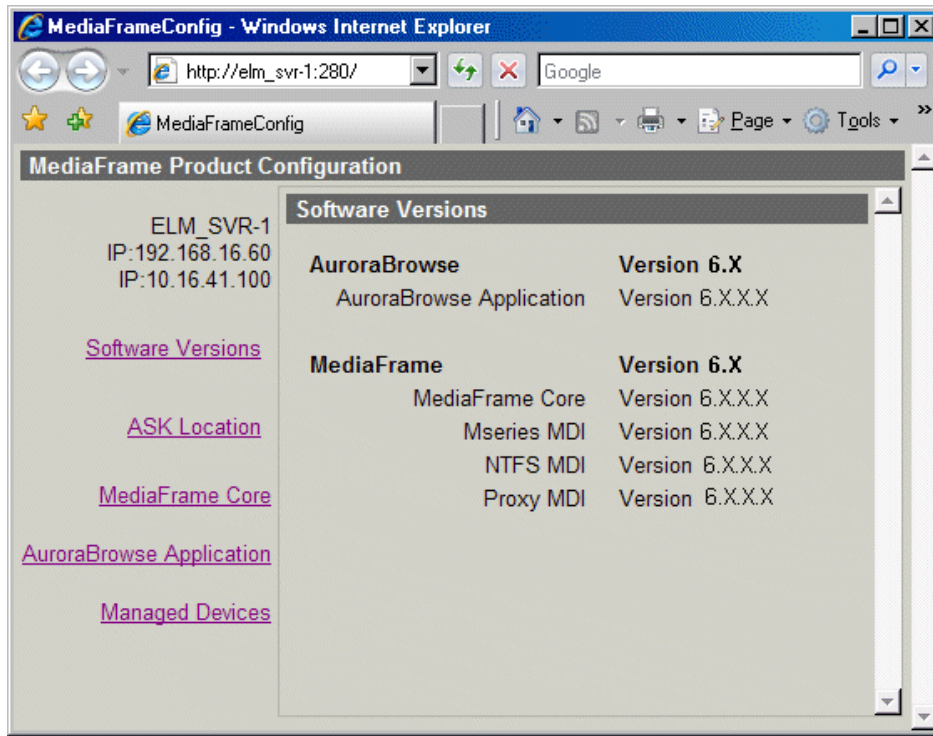
Prepare for system upgrade

Do the following to gather information and put the system in the state required for the upgrade:

Step 1: Identify components to upgrade

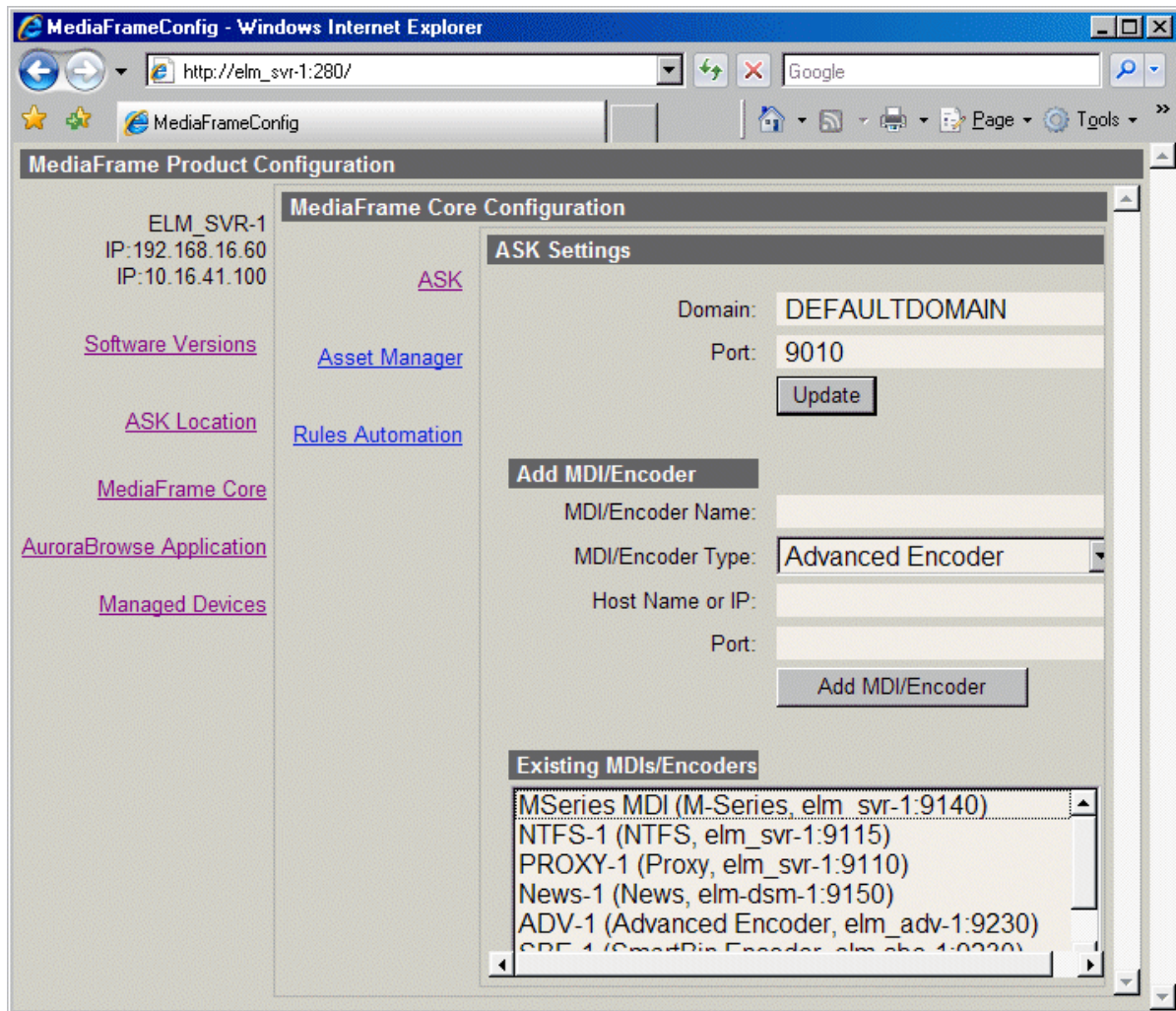
For your particular system, you must know what software components are in use, their current versions, and on what devices those software components are installed. If you have not yet clearly identified software components in this way, do so as follows:

1. View the MediaFrame server’s configuration page at **Software Versions**.



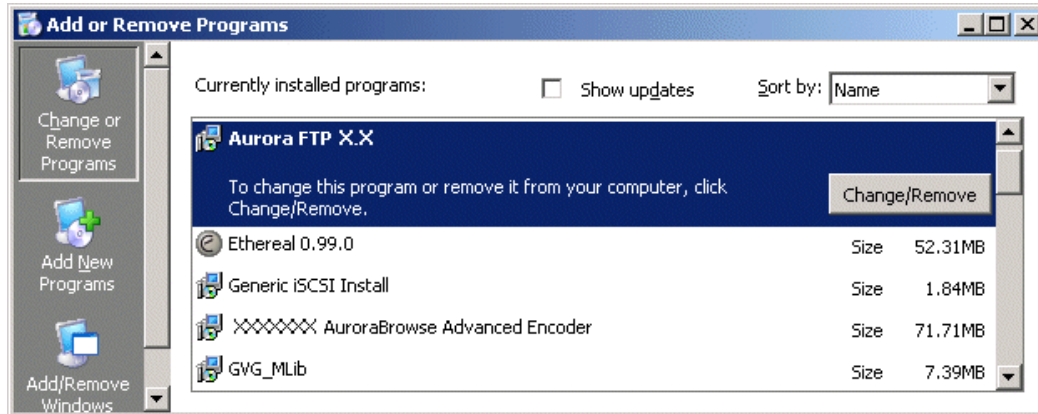
This page lists the components installed on the server and their versions.

2. View the server's configuration page at **MediaFrame Core | ASK**.



Existing MDIs/Encoders lists software components and the devices on which they are installed.

- At each device in the Browse system, view the Windows **Add/Remove Programs** control panel.



Identify the software installed on the device and determine what components must be compatible. Depending on your system design, there can be software related to K2 products, MediaFrame/Browse products, and other Aurora products all installed on a single device.

- When you have the complete list of all the components that need to be at compatible versions on your system, proceed to [“Step 2: Verify versions of supporting systems”](#).

Step 2: Verify versions of supporting systems

Refer to compatibility information earlier in these release notes, as well as compatibility information in the most recent release notes for other products, to determine version and upgrade requirements. Depending on the system design, the MediaFrame/Browse system requires that components from other systems be upgraded as follows:

- Open SAN or K2 systems must be running a compatible version.
- NewsEdit, IngestStation, NewsQ Pro, Aurora Edit, Aurora Ingest, or Aurora Playout systems must be running a compatible version.
- The News FTP version must be compatible.
- Encoders must have software components upgraded as necessary to access shared storage. For example, if accessing K2 shared storage, Encoders must have SNFS, Generic iSCSI, and GVG_MLib software upgraded to compatible versions and be able to successfully access the shared storage. The instructions for upgrading those K2 software components are provided in [“Upgrade K2 software”](#) on page 12 later in this Browse system upgrade procedure.

When you have verified that other systems are already running compatible versions or can be upgraded to compatible versions along with this Browse system upgrade, proceed to [“Step 3: Stop all system use”](#).

Step 3: Stop all system use

1. Stop all media access on the Browse system and on connected systems. This includes all ingest, playout, record, play, and transfer operations.
2. Proceed to [“Upgrade K2 software”](#).

Upgrade K2 software

Skip this step if:

- None of your browse system devices are iSCSI clients on a K2 Storage System. Skip ahead to [“Upgrade the MediaFrame server” on page 15](#).

Do this step if:

- One or more of your browse system devices are iSCSI clients on a K2 Storage System.

Determine the devices in your Browse system that are iSCSI clients. Depending on your system design, the following devices can be iSCSI clients:

- Advanced Encoders
- SmartBin Encoders
- MDI server

A device that is part of another system, such as an Aurora conform server or DSM, can also be an iSCSI client. Refer to documentation for these other products for specific software upgrade instructions.

On your iSCSI clients, upgrade software in this order:

1. StorNext File System
2. Grass Valley Generic iSCSI Client Installation
3. GVG_MLib software

Refer to the following procedures to upgrade software on iSCSI clients.

Step 1: Install the StorNext File System

The StorNext File System software is located on the Aurora Suite CD-ROM.

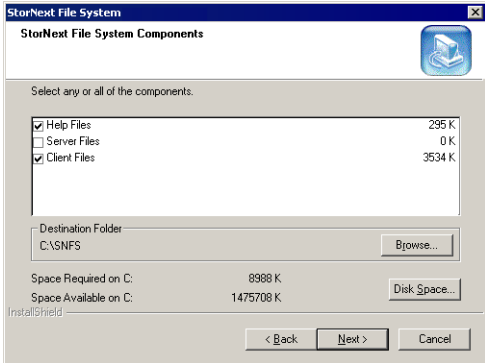
NOTE: Use the standard SNFS installer that is named according to the *“snfs2xxbxx.exe”* convention. Do not use the *“simple”* installer which is designed for K2 systems only.

You can over-install software when you upgrade.

To upgrade the StorNext software:

1. Navigate to the directory that contains the software.
2. Double-click on the setup.exe file.

3. Install the software following these instructions:

On this screen...	Do this...
Welcome (2 screens)	Click Next .
License Agreement	Click Yes .
Choose Destination Location	Accept the default location and click Next .
StorNext File System Components	Select Help Files and Client Files ; do not select Server Files. 
Select Program Folder	Accept the default location and click Next .
Start Copying Files	Click Next .
Choose Options to Complete the Installation	Leave the checkbox blank and click Next .
File System Name Service Locations	Enter the name or IP address of the K2 Media Server and click Next .
Confirm File System Name Services Host List	Click Next .
Establish StorNext File System Drive Mapping and Credentials?	Click No ; this will be configured automatically when you run the K2 Configuration application later.
StorNext File System Setup	Click Finish .

4. Reboot the Encoder when prompted.

5. Proceed with [“Step 2: Install Generic iSCSI Client Software”](#).

Step 2: Install Generic iSCSI Client Software

The Generic iSCSI Client software is located on the Aurora Suite CD-ROM. Refer to release notes to verify the version.

To install the software:

1. Navigate to the directory that contains the software.
2. Double-click on the setup.exe file.

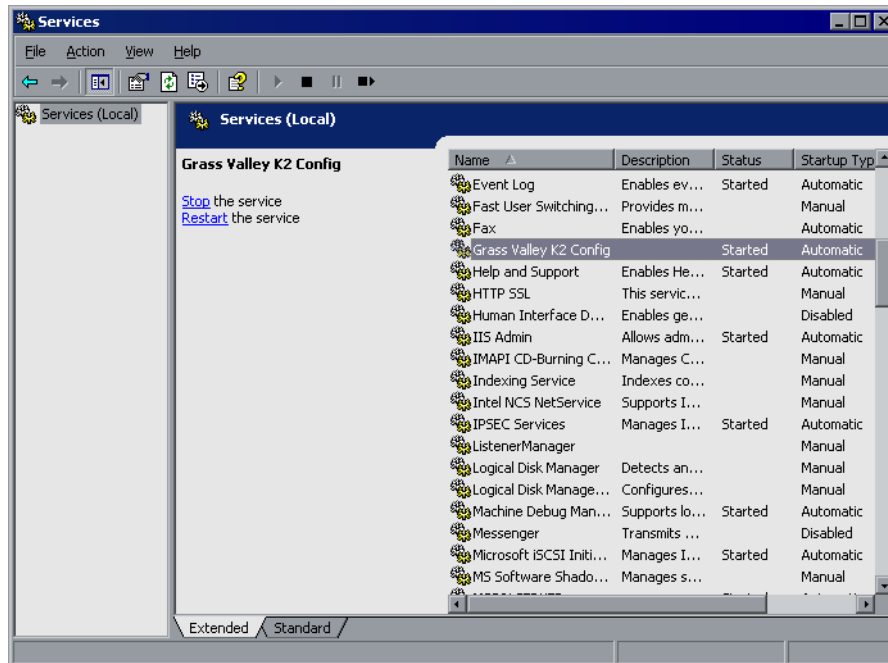
The Microsoft iSCSI Initiator software also installs. When the Microsoft iSCSI Initiator software install completes, the Generic iSCSI Client software install

continues.

3. Once the Generic iSCSI software is installed, restart the machine.

4. When the machine comes back up, check the services as follows:

- Go to **Start | Settings | Control Panel | Administrative Tools | Services**. The Services Control Panel opens



- Make sure that the service named “Grass Valley K2 Config” is started.

5. Proceed with “[Step 3: Install GVG_MLib Software](#)”.

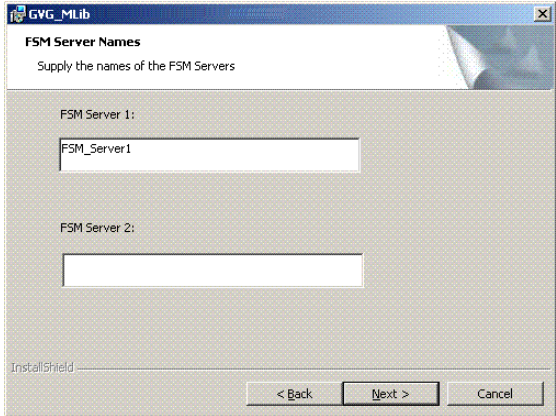
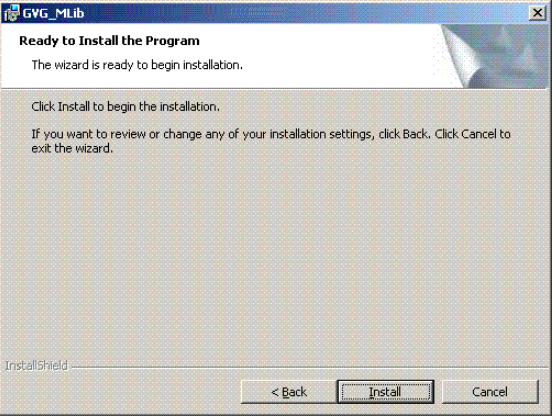
Step 3: Install GVG_MLib Software

The GVG_MLib software is located on the Aurora Suite CD-ROM. Refer to release notes to verify the version.

To install the software:

1. Insert the Aurora Edit CD into your CD drive.
2. Navigate to **Software Installs | GV_MLib**.
3. Double-click on **Setup.exe**.

Install the software following these instructions:

On this screen...	Do this...
Welcome	Click Next .
<p>Setup Type</p> 	<p>Enter the name of the K2 server.</p> <p>If you have a back-up server, enter that name as well; otherwise, leave the second entry space blank.</p> <p>Click Next.</p>
<p>Ready to Install</p> 	<p>To review or change your settings, click Back.</p> <p>To begin the installation process, click Install.</p>
Installation Complete	Click Finish . The workstation prompts you to reboot so the new settings take effect.

4. Proceed with [“Upgrade the MediaFrame server”](#).

Upgrade the MediaFrame server

Do the following to upgrade software on the MediaFrame server:

Step 1: Back up database and configuration

You should make sure that you have recent backups the MediaFrame database and the Browse configuration file before upgrading software, as follows:

1. Verify that the database maintenance plan on the MediaFrame server is running correctly. Refer to the *Aurora Browse Installation and Configuration Guide* for a

complete description and procedures for the database maintenance plan.

2. Copy the *C:\Thomson* directory to a different location. This directory contains the configuration files for the locally installed software components.
3. Proceed to “[Step 2: Install “High Priority” Windows updates](#)”.

Step 2: Install “High Priority” Windows updates

This step is required if:

- You have a server that was originally installed with version 3.1 Browse software and you have not done any Windows updates since the original installation. In this case you must update the Windows operating system to support the version 6.3.2 installation program.

This step is recommended if:

- You have a server that originally installed with version 3.1 Browse software and you have done subsequent Windows updates
- You have a server that you received from Grass Valley with a version of Browse software higher than version 3.1 pre-installed.

Install Windows “High Priority” updates for version 6.3.2. While you have the MediaFrame/Browse system in an offline state to upgrade software, you should check to see if there are any new updates that you need to install. Use standard Windows procedures.



CAUTION: Install only “High Priority Updates”. Do not install other Windows or driver updates.

Proceed to “[Step 4: Close all programs](#)”.

Step 3: Install SQL 2005 Service Pack 2

Skip this step if:

- Your MediaFrame server has SQL 2000. Skip ahead to “[Step 4: Close all programs](#)”.

Do this step if:

- Your MediaFrame server has SQL 2005.

To install SQL 2005 SP 2, do the following:

1. Procure the SP 2 installation file. Find information at the following:

<http://support.microsoft.com/kb/913089>

Follow links to obtain SQL Server 2005 SP2 (not Express) and download `SQLServer2005SP2-KB921896-x86-ENU.exe`

2. On the MediaFrame server, close all applications, windows, control panels, and any other program. Check the Windows taskbar and make sure that it is empty.
3. Open the SP 2 installation file and work through the installation wizard.
4. Restart the MediaFrame server

5. Proceed to [“Step 4: Close all programs”](#).

Step 4: Close all programs

On the MediaFrame server, do the following:

1. Close all applications, windows, control panels, and any other program. Check the Windows taskbar and make sure that it is empty.
2. Proceed to [“Step 5: Uninstall software”](#).

Step 5: Uninstall software

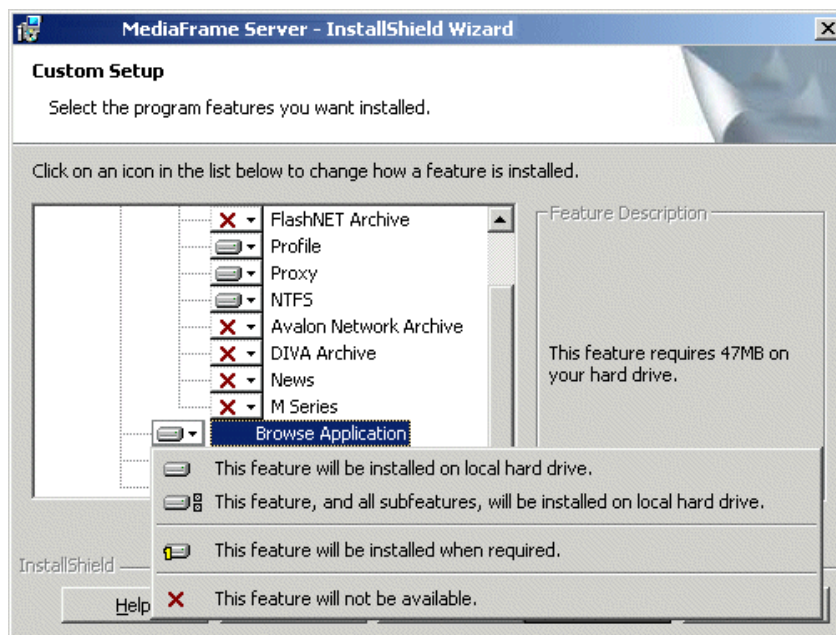
On the MediaFrame server, do the following:

1. Open Windows **Add/Remove Programs**.
2. Locate the server software. Depending on your version of Browse software, it is named one of the following:
 - Thomson NewsBrowse Server
 - Thomson Aurora Browse Server
3. Select the server software and click **Remove**.
4. When prompted “Do you want to delete the MediaFrame database from your system?”, click **No**.
5. When prompted “You must restart...”, click **Yes**. The MediaFrame server restarts.
6. When startup processes complete, log on to Windows and then proceed to [“Step 6: Install software”](#).

Step 6: Install software

On the MediaFrame server, do the following:

1. Insert the Browse software CD or otherwise gain access to the Browse software installation files.
2. Open ...*Server*\Setup.exe. The MediaFrame server installation wizard opens.
3. Click **Next** to progress through the wizard. When you arrive at the Custom Setup screen, select the components that were previously installed on the MediaFrame server, as follows:



If a component that you want to install displays a red X, click the component and select **This feature will be installed on local hard drive**.

If a component that you do not want to install does not display a red X, click the component and select **This feature will not be available**.

4. When components to install are selected, click **OK** and work through the remainder of the installation wizard.
5. On the last page of the wizard, a message informs you that you must configure. For the software upgrade that you are doing, it is sufficient to open configuration pages on the MediaFrame server and do a visual check to verify that previous configuration values are intact. When you are satisfied that you still have a valid configuration, click **Finish** to close the installation wizard.

Do not restart the MediaFrame server or manually start any services.

6. Proceed to [“Upgrade the MDI server”](#).

Upgrade the MDI server

Skip this procedure if:

- You do not have a separate MDI server as part of your MediaFrame/Browse system. This is the case if your MDIs are installed on the MediaFrame server. Skip ahead to [“Upgrade Encoders”](#).

Do this procedure if:

- You have a separate MDI server as part of your MediaFrame/Browse system.

Step 1: Back up configuration

You should back up the MDI server's configuration file before upgrading software, as follows:

1. Copy the *C:\Thomson* directory to a different location. This directory contains the configuration files for the locally installed software components.
2. Proceed to [“Step 2: Close all programs”](#).

Step 2: Close all programs

On the MDI server, do the following:

1. Close all applications, windows, control panels, and any other program. Check the Windows taskbar and make sure that it is empty.
2. Proceed to [“Step 3: Uninstall software”](#).

Step 3: Uninstall software

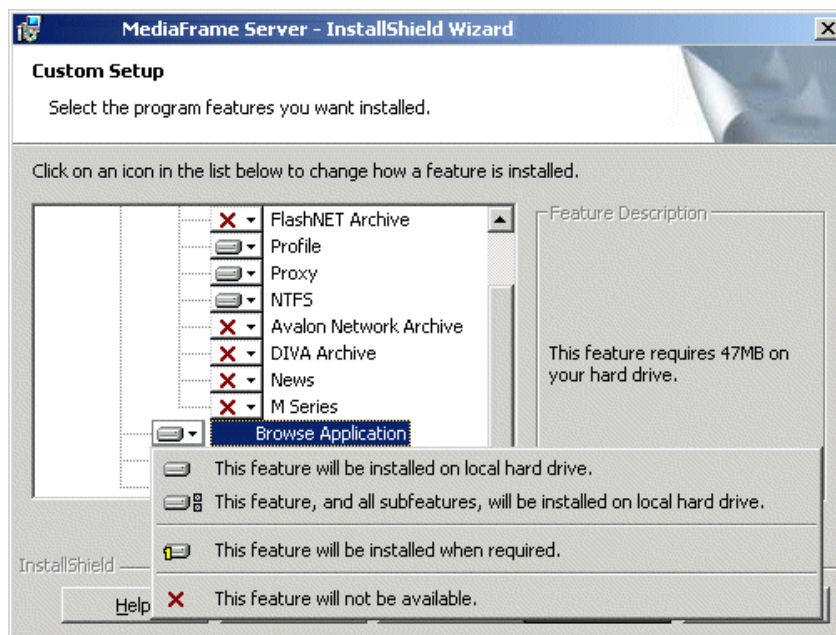
On the MDI server, do the following:

1. Open Windows **Add/Remove Programs**.
2. Locate the server software. Depending on your version of Browse software, it is named one of the following:
 - Thomson NewsBrowse Server
 - Thomson Aurora Browse Server
3. Select the server software and click **Remove**.
4. When prompted “You must restart...”, click **Yes**. The MDI server restarts.
5. When startup processes complete, log on to Windows and then proceed to [“Step 4: Install software”](#).

Step 4: Install software

On the MDI server, do the following:

1. Insert the Browse software CD or otherwise gain access to the Browse software installation files.
2. Open ...*Server*\Setup.exe. The MediaFrame server installation wizard opens.
3. Click **Next** to progress through the wizard. When you arrive at the Custom Setup screen, select the components that were previously installed on the MDI server, as follows:



If a MDI that you want to install displays a red X, click the component and select **This feature will be installed on local hard drive**.

If a MDI that you do not want to install does not display a red X, click the component and select **This feature will not be available**.

4. When components to install are selected, click **OK** and work through the remainder of the installation wizard.
5. On the last page of the wizard, a message informs you that you must configure. For the software upgrade that you are doing, it is sufficient to open configuration pages on the MDI server and do a visual check to verify that previous configuration values are intact. When you are satisfied that you still have a valid configuration, click **Finish** to close the installation wizard.

Do not restart the MDI server or manually start any services.

6. Proceed to [“Upgrade Encoders”](#).

Upgrade Encoders

A prerequisite for this procedure is that components related to supporting systems, such as K2 shared storage, are upgraded. Refer to [“Step 2: Verify versions of supporting systems” on page 11](#).

On each of the Advanced Encoders or SmartBin Encoders in your system, do the following to upgrade software:

Step 1: Back up configuration

You should back up the Encoder’s configuration file before upgrading software, as follows:

1. Copy the *C:\Thomson* directory to a different location. This directory contains the

configuration files for the locally installed software components.

2. Proceed to [“Step 2: Close all programs”](#).

Step 2: Close all programs

On the Encoder, do the following:

1. Close all applications, windows, control panels, and any other program. Check the Windows taskbar and make sure that it is empty.
2. Proceed to [“Step 3: Uninstall software”](#).

Step 3: Uninstall software

On the Encoder, do the following:

1. Open Windows **Add/Remove Programs**.
2. Locate the software. Depending on your version of Browse software, it is named one of the following:
 - ...NewsBrowse Advanced Encoder
 - ...AuroraBrowse Advanced Encoder
3. Select the software and click **Remove**.
4. Restart the Encoder.
5. When startup processes complete, log on to Windows and then proceed to [“Step 4: Install software”](#).

Step 4: Install software

On the Encoder, do the following:

1. Insert the Browse software CD or otherwise gain access to the Browse software installation files.
2. Locate and open the appropriate installation program as follows:
 - If upgrading an Advanced Encoder, open ...*AdvancedEncoder*\Setup.exe.
 - If upgrading a SmartBin Encoder, open ...*SmartBinEncoder*\Setup.exe.The installation wizard opens.

3. Click **Next** to progress through the wizard.
4. When screen to install DirectX software appear, click **Accept**, **Next**, and **Finish** to progress through the DirectX screens.
5. Click **Next** and **Finish** to close the installation wizard.

Do not restart the Encoder or manually start any services.

6. Repeat these steps to upgrade software on the remainder of the Advanced Encoders or SmartBin Encoders in your system.
7. Proceed to [“Upgrade NAS”](#).

Upgrade NAS

This procedure applies to the Fastora NAS with Windows operating system.

Step 1: Install Windows updates

It is recommended that you install Windows “High Priority” updates. While you have the MediaFrame/Browse system in an offline state to upgrade software, you should check to see if there are any new updates that you need to install. Use standard Windows procedures.



CAUTION: Install only “High Priority Updates”. Do not install other Windows or driver updates.

When the Windows update process is complete, proceed to [“Step 2: Verify that the Local Display Manager Service is disabled”](#).

Step 2: Verify that the Local Display Manager Service is disabled

After installing Windows updates, check the Local Display Manager Service (this is a Windows operating system service) and configure it if necessary, as follows:

1. Open the Windows Services Control Panel
2. Locate **Local Display Manager Service**.
3. If the service is started, stop the service.
4. Right-click the service, select **Properties**. The Properties dialog box opens.
5. In the Properties dialog box, set the startup type to **Disabled**.
6. In the Properties dialog box, click **OK** to save settings and close.
7. Close the Services Control Panel.
8. Proceed to [“Restart devices”](#).

Restart devices

When software upgrades are complete on all the devices of the MediaFrame/Browse system, restart devices as follows:

1. Restart the MediaFrame server. While restart is in process, you can proceed to the next step.
2. If you have a MDI server, restart the MDI server.
3. Wait until restart processes are complete on servers.
4. Restart Encoders.
5. Proceed to [“Verify Browse client PC upgrades”](#).

Verify Browse client PC upgrades

On each Browse application client PC, do the following:

1. Close and re-open the Browse client application.
The upgraded software on the MediaFrame server is automatically detected and a message box prompts you to upgrade software.
2. Answer the message box to upgrade the software.
The software is automatically upgraded on the client PC. There are no other manual tasks required to upgrade software on Browse client PCs.
3. If it appears that the wrong user interface components are displayed, clear the browse cache to insure updated components are downloaded. To clear the browser cache in Internet Explorer, do the following:
 - a. Go to **Tools | Internet Options**.
 - b. From the **General** tab select the **Delete Files** button.
 - c. Check **Delete all offline content**.
 - d. Click **OK**.

The software upgrade to your MediaFrame/Browse system is complete.

Troubleshooting Aurora Browse client PCs

When you run the 6.3 Aurora Browse client application on your PC, you might notice some problems that were not present with previous versions. Refer to the following sections to fix these problems.

Fixing video screen and tab problems

If your Aurora Browse application client PC has this problem, when you load a clip into the Aurora Browse application, you see the following symptoms:

- The clip's storyboard appears as normal
- The video screen is gray
- No tabs (general, related, keyword, etc.) appear.

To fix this problem, do the following:

1. Procure *RemoveClipPlayer.bat*. Contact your Grass Valley representative.
2. On the PC, close all Internet Explorer windows.
3. Copy *RemoveClipPlayer.bat* to the local drive.
4. Run (double-click) *RemoveClipPlayer.bat*.
5. Install the Aurora Browse application. Use the instructions in [“Verify Browse client PC upgrades” on page 23](#).

Fixing delayed playback on long clips

If your Aurora Browse application client PC has this problem, you see the following symptom:

- A long clip does not begin playback immediately

To fix this problem, do the following:

1. Procure *Ligos_Patch.exe*. Contact your Grass Valley representative.
2. Log on to the PC with administrator privileges to the local PC. If the PC is on a domain, you should have domain administrator privileges as well.
3. Copy *Ligos_Patch.exe* to the local drive.
4. Run (double-click) *Ligos_Patch.exe*. A command prompt opens and closes by itself.
5. If you want to verify that the fix is applied correctly, do the following:
 - e. Copy a short MPEG-1 clip from the low-res NAS to the *C:\Ligos_Patch* folder.
 - f. In the *C:\Ligos_Patch* folder, open *GraphEdit.exe*.
 - g. On the menu, choose **File | Render Media Files**.
 - h. Browse to the *C:\Ligos_Patch* folder.
 - i. Click on the MPEG-1 clip you copied to the folder.
 - j. Verify that “Ligos MPEG Splitter” is in the second square. This confirms that the fix is applied correctly.
6. Delete the *C:\Ligos_Patch* folder.

Upgrade to DirectX 9.0c

On the Aurora Browse application client PC, check the version of DirectX. If necessary, upgrade to version 9.0c or higher. This is necessary only on older machines with operating system Windows 2000 or earlier. Several problems are solved with this version of DirectX, for example, low-res browse controls not frame accurate, 0 ending timecode.

Configuring a Windows Server 2003 MediaFrame server

If your MediaFrame server is running on a platform with the Windows Server 2003 operating system, do the following:

1. Open the Windows **Control Panel | Administrative Tools | Internet Information Services** or **Internet Services Manager**.
2. Right-click **DefaultWebSite | Properties**.
3. On the **Services** tab, enable the check box **Run WWW Service in IIS 5.0 Mode**. You must run in IIS 5.0 isolation mode.
4. Save and close dialog boxes.
5. Open the following file in Notepad:

C:\windows\micorsoft.net\framework\v1.1.4322\CONFIG\machine.config

6. Locate the processModel section and for userName enter "SYSTEM". The following is an example of a correctly configured processModel section:

```
<processModel
  enable="true"
  timeout="Infinite"
  idleTimeout="Infinite"
  shutdownTimeout="0:00:05"
  requestLimit="Infinite"
  requestQueueLimit="5000"
  restartQueueLimit="10"
  memoryLimit="60"
  webGarden="false"
  cpuMask="0xffffffff"
  userName="SYSTEM"
  password="AutoGenerate"
  logLevel="Errors"
  clientConnectedCheck="0:00:05"
  comAuthenticationLevel="Connect"
  comImpersonationLevel="Impersonate"
  responseDeadlockInterval="00:03:00"
  maxWorkerThreads="20"
  maxIoThreads="20"
/>
```

7. Save and close *machine.config*.
8. Open up a command prompt and run "iisreset".

Operation considerations

SmartBin Encoder record duration — Because of the size limit on the cache drive (232GB), the longest duration that can be recorded is 10 hours for 50Mbs, 6 hours for 75Mbs and 5 hours for 100Mbs.

EDL locations — For each of the following EDL operations, configure a different location:

- Save EDL
- Temporary save EDL
- Conform EDL
- Export EDL

Using “Offline Status is set” search filter — This filter searches assets that are *only* offline (in the archive). It does not search assets that are both online and offline.

3rd party configuration considerations

FlashNet and Profile/UIM — The FlashNet archive installer needs to make accommodations when connecting to a Profile/UIM system. In the *comm_methods* file, UIMs are configured exactly the same way as a Profile XP system, except that the UIM becomes the “FC” entry in the “@” clause, as follows:

For a Profile XP system on its own...

Profile_IP_Address	6	@profile_FC_Address/movie
--------------------	---	---------------------------

And a UIM...

Profile_IP_address	6	@UIM_IP_Address/movie
--------------------	---	-----------------------

This is because the CONTENT (directory listing) of the system is picked up through a Profile “sdss” client, while the DATA is moved via Fibre Channel.

With the UIM again the clipnames are found via 100Bt interface from a Profile, then the DATA is moved via the GigE interface on the UIM.

Avalon frame synch — Partial File Restore assets from Avalon in NewsFTP/Aurora FTP systems can have high-res and low-res out of synch by two frames. To solve this problem, contact Avalon for assistance.

FlashNet clip deletion — There can be a problem where the FlashNet archive does not reclaim space after clips are deleted. To solve this problem, contact SGL for assistance.

Known problems

K2/M-Series systems

- Description If the LAN cable is pulled out while a data transfer is in progress, the Archive MDI does not automatically reconnect. (CR86834)
- Workaround After you reconnect the LAN cable, stop the Flashnet MDI and restart it to ensure future archives and restores will occur. (To start or stop the service, select **Start | Settings | Control Panel | Administrative Tools | Services**. The Services Control Panel opens. Select **Thomson Flashnet MDI**, and right click **Start** or **Stop**.)
- Description The News MDI configuration page is inaccessible. (CR85262)
- Workaround On the DSM, in Internet Information Services Manager under Web Service Extensions, for ASP.NET set status to Allowed.
- Description When installing Browse server software for the first time on a computer, the installation fails with message “mfadmin is not a valid login...”. (CR85264)
- Workaround Install server software again. The installation succeeds the second time.
- Description When 16:9 SD material is added to the timeline and previewed, it appears as 4:3. (CR83690)
- Workaround None. This is as designed.
- Description Subclips and sequences are ignored. (CR83421)
- Workaround None. This is as designed. The Rules Wizard treats subclips as masterclips.
- Description For 720p material, the timecode displayed with the storyboard is one second ahead of the actual timecode. (CR83667)
- Workaround The timecode below the VGA is correct. Ignore the timecode displayed with the storyboard.
- Description When doing a restore operation from NLS, the restore is not automatically made higher priority than other archive or transfer operations currently underway. (CR83521)
- Workaround To make a restore operation from NLS a high priority, make sure there are no archive or transfer operations underway.

Known problems

- Description In the Browse application the search text window can go beyond the frame boundary, which makes the Go button not visible. (CR83475)
- Workaround Press **Enter** to start the search. When the search is complete, the Go button is visible.
- Description Fastora NAS randomly locks up after a few weeks or months. (CR80997)
- Workaround This is caused by the Local Display Manager Service, which is a Windows operating system service. This service should not be started on a Fastora NAS. Refer to the procedure earlier in these release notes to correctly configure this service.
- Description DIVA transfers fail if the IP address is not used for the configured SourceName/DestinationName. (CR78273)
- Workaround This setting is in the DIVArchive Configuration Utility, not the MediaFrame DIVA MDI configuration page. In the utility, the source and destinations name configured must be the same as the IP address of the servers they are referring to.
- Description Event Viewer can crash with an “invalid value for machine name” message. (CR75795)
- Workaround Restart Event Viewer.
- Description There is an occasional benign error message in Browse server logs: “Collection was modified: enumeration operation may not execute”. (CR75285)
- Workaround Ignore this message. It does not indicate a problem.
- Description In Aurora Transfer, during batch transfer operations to K2 systems, the % done status of transfers occasionally freezes. Also, some of the clips might not appear in the destination bin displayed in Transfer Tool. (CR74733)
- Workaround This is a user interface display problem only. The transfers are successful. Refresh the user interface to see the clips in the destination bin.
- Description After renaming an asset, archive dialog boxes reference the old name. (CR75521)
- Workaround This is a user interface display problem only. Ignore the display of the old name. Archive/restore functions are still correct.

Description If a partial file restore fails mid-transfer, a proxy/metadata-only asset is created in the system. (CR73408)

Workaround Manually delete the proxy/metadata-only asset.

Description DIVArchive and FlashNet restore operations fail if the destination folder has clips with the same base name as the clip to be restored. This occurs even if duplicate name handling is enabled. The specific condition that causes the failure is when the name of the clip to be restored is *clipname*, and the destination folder has a clip named *clipname* **and** a clip named *clipname_0*. (CR50770)

Workaround Users must restore to a different destination folder or delete/rename the clips in the destination folder that have the same basename as the clip to be restored.

Description For DIVArchive and FlashNet, the control in the Aurora Browse application for renaming is disabled on full restore. (CR50542)

Workaround This is as designed. DIVArchive and FlashNet do not support a user specified name for a full restore. There is no workaround.

Description If a FlashNet partial file restore is interrupted (for example, if the network cable is disconnected mid-transfer), Browse incorrectly receives a “DONE” message from the archive and subsequently displays a complete status. The asset will have low res but no actual high res. (CR71891)

Workaround Ignore the “DONE” message, reconnect the network, restore again.

Description After you manually abort a transfer to the Flashnet archive system, the Archive Status page incorrectly reports that the transfer is complete. (CR72212)

Workaround None.

Description During FlashNet archive transfers, the status messages show an incorrect % done messages, even though the transfer is correct. The incorrect message goes from 0% straight to 100%, or it stays at 0% even when done. Restore status messages are correct. (CR71921)

Workaround This is a user interface display problem only. Ignore the % done messages.

Description Partial File Restore assets from older versions of FlashNet, have high-res and low-res out of synch randomly 8-15 frames. (CR71923)

Workaround Check with Grass Valley Service to confirm correct version of FlashNet.

- Description Aurora Browse shows invalid archived asset/group/volume(s) for FlashNet. (CR69678)
- Workaround Restart Thomson FlashNet MDI. This re-synchronizes the Aurora Browse database with the FlashNet archive file system. The problem occurs when you modify (add/delete) the FlashNet archive file system using some tool other than Aurora Browse. For example, if you label the FlashNet group/volume(s) using dtool.exe (supplied by SGL) or archive/delete an asset using testapi.exe or any other SGL supplied tool, you cause the problem. Since Aurora Browse does not support bi-directional synchronization with FlashNet archive, the Aurora Browse database goes out of sync with FlashNet.
- Description NTFS MDI cannot detect if a remote machine is online. This occurs if NetBIOS has been disabled. (CR75426)
- Workaround On machines monitored by the NTFS MDI, such as the Proxy NAS or the MediaFrame server, NetBIOS is enabled by default at the factory. Do not change this configuration. The NTFS MDI uses port 139, which becomes unavailable when NetBIOS is disabled.
- Description Aurora Edit LD audio files cannot be deleted. This occurs if the NTFS MDI is not monitoring the machine that stores the audio files. (CR75428)
- Workaround Make sure the NTFS MDI monitors at least one directory on the machine that stores Aurora Edit LD audio files.
- Description On Encoders, uninstall fails if Thomson Proxy Transfer service is selected in the Services window. (CR72735)
- Workaround Close the Services window before uninstalling. If the Services window is open and the uninstall fails, complete the uninstall process as follows:
- Manually remove files that are left over from the uninstall from the *C:\Program Files\Thomson* folder.
 - Manually remove service entries from the registry at
- HKLM\System\CurrentControlSet\Services\ProxyTransferService
- Description When opening the Smart Bin Encoder Status Page in a system where a large number of Smart Bin Ingest Jobs have occurred in the last 24 hours, the page may take up to several minutes to begin displaying data. (CR59286)
- Workaround Wait until the page is finally displayed.
- Description Links in related tab won't work for any asset with a single quote (') in the name. (CR56657)
- Workaround No workaround available. This should not affect normal operations, as the related tab is only required for system diagnostics.

- Description Aurora Browse Advanced/SmartBin Encoders support 16 bit audio, matching the rest of the News products. They will not encode other audio configurations. (CR56678)
- Workaround Configure the audio settings in the ingest servers to 16 bits.
-
- Description Sometimes the temporary EDL files created during conformance are not deleted. (CR52582).
- Workaround If the temporary EDL folder is consuming too much disk space, the temporary EDLs can be cleaned up using the following process:
1. Suspend all Conform operations during this process.
 2. On the NB server configuration page navigate to Aurora Browse Application → Conform Services.
 3. Confirm the device and pathname for the Temporary EDL location.
 4. Navigate to that location and delete the files.
-
- Description The SmartBin Encoder is able to maintain real time performance if the delay between recordings is 15 seconds or more. If the delay is less than 15 seconds, the SmartBin Encoder will take about a minute into the recording to get caught up. (CR57370)
- Workaround Ensure that the delay between successive SmartBin Encoder jobs is greater than 15 seconds. If this is not possible, ensure the length of the media being encoded is at least one minute in duration.
-
- Description After a rapid sequence of control clicks in the web interface, the different sections of the UI may lose communication with each other. Loading an asset or adding a segment to the timeline may not be possible. (CR58763)
- Workaround Simply reload the asset to recover; alternatively, save all work and restart the application.
-
- Description Double-clicking quickly on the “OK” button in the keywords tab of the Aurora Browse User Interface can add multiple keywords with the same information. (CR57740)
- Workaround Only use single-clicks when pressing the “OK” button. If multiple keywords are added, delete the duplicate keywords.
-
- Description GXF import (from within Aurora Edit) into a scavenge bin fails. (CR58258)
- Workaround Import file into non-scavenge folder. When the import is complete, move the clip to the scavenge folder.

Known problems

- Description EDL preview ends one frame early. (CR58952)
- Workaround Frame-accurate previewing of EDLs using Aurora Browse is not supported. Instead, either preview with the Edit LD application, or Conform to an Aurora Edit Sequence and preview with an Aurora Edit application.
- Description When the EDL timeline is completely zoomed in, the green EDL segment is no longer aligned correctly with the black pointer. (CR58596)
- Workaround Zoom out one step in order to align the pointer with the segment.
- Description During Batch deletion of clips, some of the clips might fail for the first time, but then they are successfully deleted on the second try. (CR58108)
- Workaround Reattempt a second deletion on those clips which were not successfully deleted on the first attempt.
- Description If one Aurora Browse user attempts to delete an asset at the same time another Aurora Browse user is viewing the clip, the High-resolution material will be deleted, however the proxy will remain. (CR57788)
- Workaround After the other user is no longer viewing the clip, retry deletion of the asset.
- Description Sometimes, the NewsMDI does not delete the source clip (a master clip) when the clip is being archived and the “delete online media following archive” is selected. (CR59065)
- Workaround Delete the online media manually using either the Aurora Browse or Aurora Edit applications.
- Description If the name of an M-Series MDI has not been first added to the ASK Configuration Page, it cannot be added to the list of M-Series MDIs within the M-Series MDI Configuration Page. In this case, when the “Add M-Series Managed Device” button is clicked, the following error message will appear: “Following fields are invalid: MDI Name”. (CR59274)
- Workaround Add the M-Series MDI Name to the ASK configuration page before adding the M-Series MDI Name to the MDI Configuration page.

- Description On certain systems, occasional delayed write popup windows occur during Smart Bin Ingests. Both High-resolution Aurora Edit material and proxy are successfully created, however the popup dialog windows remain on the Smart Bin Encoder computer. (CR59288)
- Workaround Periodically, the Smart Bin Encoder should be monitored and these windows closed.
-
- Description In the Aurora Browse application, while a clip is loading, if you change the tab selection the tab state can be out of synch with the active area after the clip loads. (CR44592)
- Workaround Change the tab selection only after the clip has finished loading.
-
- Description Occasionally a UIM transfer fails, but the Aurora Browse application automatically retries and the transfer is successful. An error is reported in the log, but in this case it can be ignored, since the transfer is successful. (CR50533)
- Workaround No workaround required.
-
- Description Though the UIM supports six simultaneous transfers, on rare occasion it behaves as if it supports only four simultaneous transfers and the fifth transfer fails. (CR49987)
- Workaround Restart the UIM.
-
- Description An EDL segment gets stuck on the cursor if you drag the EDL outside of the timeline frame. When you move the cursor back into the timeline frame the EDL segment is attached. (CR50158)
- Workaround Move the cursor into the timeline frame and left-click. This releases the EDL segment.
-
- Description Very large batch delete (~10K) causes NAS to get very slow. (CR50796)
- Workaround Reboot NAS. The system will recover after about 20 minutes when the deletions are complete.
-
- Description The Aurora Browse application shows black flashes between EDL segments. (CR50155)
- Workaround This occurs when the Aurora Browse client machine is experiencing slow performance. Optimize network performance or use a faster client machine.

Known problems

Description Sometimes, the Aurora Browse User Interface sometimes starts up with the scroll bars on the “find” tab partially hidden. (CR59376)

Workaround Press the Enter key on the keyboard.

Description Scavenge encoding will not work on conformed clips less than 10 seconds in length. (CR62104)

Workaround None

Description When Event Viewer is opened, software installation automatically starts with a “Service already exists” message. (CR69690)

Workaround This only occurs the first time that the Event Viewer is run after installation of the MediaFrame server software. To avoid this problem, do the following:

1. Start Event Viewer (first attempt).
The install program automatically starts.
2. Once the install program has completed running, when prompted to restart the server, enter **No**. No restart is necessary.
An Explorer window opens, displaying the drives on the local server.
3. Close the Explorer window.
4. Restart Event Viewer (second attempt).
This time the install program does not start.

Description In the Edit LD application, when deleting a clip, a dialog box pops up that prompts you for the MediaFrame server login. (CR72056)

Workaround Open Internet Explorer | Tools | Internet Options | Security. If the computer has a local login, select Internet. If the computer has a domain login, select Local intranet. Click Custom Level, then scroll to the bottom and select Automatic logon with current user name and password.

Description In the description field, text over 2000 characters is lost with no warning. (CR70925)

Workaround This occurs only when making a series of text edits that exceed the 2000 character limit. To make sure that you are warned when you exceed the limit, before adding text, first apply changes and then reload the asset. On a freshly loaded asset, the warning pops up correctly when you exceed the 2000 character limit.

Description Multiple click sounds are emitted when an asset is loaded into the Edit LD application. (CR68799)

Workaround To disable the click sound, clear the following registry key:
HKEY_CURRENT_USER\AppData\Local\Microsoft\Windows\Explorer\Navigating\Current

Description If a hi-res clip has one or more spaces at the end of its name, the low-res proxy for that clip might not be created. (CR73873)

Workaround End all clip names with a character, not a space.

Description Aurora Browse will not scavenge audio only assets. (CR58568)

Workaround No workaround available.

Open SAN systems

Description CPU spikes on Profile XP during event updates if VdrPanel is running. (CR79499)

Workaround Do not run the Profile MDI and VdrPanel on the same machine at the same time. The CPU spikes are the result of a conflict between these two software components.

Description If a Profile XP system that is controlled by BVW protocol records a fixed-length clip and the Proxy Creation Rule is set to “Create while Recording”, the proxy for the clip is not created properly. (CR79355)

Workaround None. This mode of operation is not supported.

Description During Profile MDI installation, a “...conformcom.dll cannot be registered...” message appears. (CR72690)

Workaround To prevent this problem, install Profile XP software prior to the Profile MDI installation. If you have already installed the Profile MDI, do the following:

1. Install Profile XP software.

2. From the Windows desktop, click **Start | Run**.

The Run dialog box opens.

3. Enter the following:

```
regsvr32 C:\Program Files\  
Thomson\ManagedDevices\Profile\ConformCOM.dll
```

4. Click **OK**.

A “...dll registered successfully...” message appears.

Description If a bin names have different upper/lower case between Profile XP Media Manager and Browse configuration screens, transfer behavior is unpredictable. (CR61338)

Workaround Make sure bin names are entered with the same case in Media Manager and in Browse configuration.

