

# ***Aurora Browse Release Notes Version 7.0 Release Notes & Upgrade Instructions***

These release notes contain the most recent information and supersede previous publications, as of *May 19, 2010*. Check the Grass Valley website at [www.grassvalley.com/docs](http://www.grassvalley.com/docs) for an updated version that contains additional important information.

These release notes contain information for the following:

- Aurora Browse client
- MediaFrame server
- MDI server
- K2 BaseCamp Express
- Aurora Proxy Encoder
- SmartBins Encoder

# Contents

Grass Valley Product Support.....	4
Release note revisions for this release.....	6
Release Summary.....	7
What's new in version 7.0.0.....	7
Changes and features in previous releases.....	8
Version 6.5.1.17.....	8
Version 6.5.1.....	8
Older versions.....	9
Version compatibility.....	10
System requirements.....	10
Compatible MediaFrame server and K2 BaseCamp Express components.....	11
Aurora Browse components.....	11
Compatible Grass Valley products.....	12
Compatible third party products.....	12
Upgrading Aurora Browse and MediaFrame systems.....	14
Upgrading Aurora Browse and MediaFrame devices with SiteConfig.....	14
About upgrading Aurora Browse and MediaFrame devices with SiteConfig.....	14
Prepare for upgrade.....	15
Prepare SiteConfig for software deployment.....	15
Install prerequisite files on the control point PC.....	15
Upgrade K2 systems.....	16
Distribute devices into deployment groups.....	16
Upgrade Aurora Edit, Ingest, and Playout systems.....	17
Upgrade NAS systems.....	17
Install High Priority Windows updates (recommended).....	18
Check all currently installed software.....	18
Add software package to deployment group for Aurora Browse devices.....	19
Setting deployment options.....	20
Upgrade software on Aurora Browse devices.....	23
Install Browse client PC application.....	25
Logging in to the Aurora Browse client PC.....	26
Licensing Grass Valley products.....	27
About software licensing.....	27
Requesting a license.....	27
Adding a license.....	29
Deleting licenses.....	29
New topics.....	30
About the MediaFrame/BaseCamp SDK.....	30
About the zoom knob.....	30
Additional notes.....	32
About using MediaFrame with non-English languages.....	32
Modifying the MediaFrame database for non-English searches.....	32
Asset and bin name limitations.....	33
Configuring the encoder for unicode languages.....	34
Operation considerations.....	35
Operating Considerations: Aurora Browse Client.....	35

Operating Considerations: MediaFrame Server and MDIs.....	35
Operating considerations: K2 BaseCamp Express.....	36
Operating Considerations: Aurora and K2 systems.....	36
Operating Considerations: 3rd party archive considerations.....	36
Known Issues.....	38

# Grass Valley Product Support

To get technical assistance, check on the status of a question, or to report a new issues, contact Grass Valley Product Support via e-mail, the Web, or by phone or fax.

## Web Technical Support

To access support information on the Web, visit the product support Web page on the Grass Valley Web site. You can download software or find solutions to problems.

**World Wide Web:** <http://www.grassvalley.com/support/>

**Technical Support E-mail Address:** [gvgtechsupport@grassvalley.com](mailto:gvgtechsupport@grassvalley.com)

## Telephone Support

Use the following information to contact Product Support by phone.

## International Support Centers

Our international support centers are available 24 hours a day, 7 days a week.

Support Center	Toll free	In country
France	+800 80 80 20 20	+33 1 48 25 20 20
United States	+1 800 547 8949	+1 530 478 4148

## Authorized Local Support Representative

A local support representative may be available in your country. To locate a support center during normal local business hours, refer to the following list. This list is regularly updated on the website for Grass Valley Product Support

(<http://www.grassvalley.com/support/contact/phone/>)

After-hours local phone support is also available for warranty and contract customers.

Region	County	Telephone
Asia	China	+86 10 5883 7575
	Hong Kong, Taiwan, Korea, Macau	+852 2531 3058
	Japan	+81 3 6848 5561
	Southeast Asia - Malaysia	+603 7492 3303

<b>Region</b>	<b>County</b>	<b>Telephone</b>
	Southeast Asia - Singapore	+65 6379 1313
	India	+91 22 676 10300
Pacific	Australia	1 300 721 495
	New Zealand	0800 846 676
	For callers outside Australia or New Zealand	+61 3 8540 3650
Central America, South America	All	+55 11 5509 3440
North America	North America, Mexico, Caribbean	+1 800 547 8949; +1 530 478 4148
Europe	UK, Ireland, Israel	+44 118 923 0499
	Benelux – Netherlands	+31 (0) 35 62 38 421
	Benelux – Belgium	+32 (0) 2 334 90 30
	France	+800 80 80 20 20; +33 1 48 25 20 20
	Germany, Austria, Eastern Europe	+49 6150 104 444
	Belarus, Russia, Tadjikistan, Ukraine, Uzbekistan	+7 095 258 09 20; +33 (0) 2 334 90 30
	Nordics (Norway, Sweden, Finland, Denmark, Iceland)	+45 40 47 22 37; +32 2 333 00 02
	Southern Europe – Italy	Rome: +39 06 87 20 35 28 ; +39 06 8720 35 42. Milan: +39 02 48 41 46 58
	Southern Europe – Spain	+34 91 512 03 50
	Switzerland	+41 56 299 36 32
Middle East, Near East, Africa	Middle East	+971 4 299 64 40
	Near East and Africa	+800 80 80 20 20; +33 1 48 25 20 20

## Release note revisions for this release

This release of software has multiple versions of release notes, as follows:

Part number	Description
071-8639-05	Initial release notes for Aurora Browse 7.0 software
071-8639-07	Topics added/modified, with the following changes: <ul style="list-style-type: none"><li>• <a href="#">About using MediaFrame with non-English languages</a> on page 32 added.</li></ul>

# Release Summary

## What's new in version 7.0.0

This version of software includes several improvements, in addition to correcting some problems that were present in earlier releases.

### Version 7.0.0

- **New look** — The look and feel of the Aurora Browse client has been changed to match the rest of the Grass Valley product lines.
- **New terminology** — The MediaFrame server will now be referred to as K2 BaseCamp. (The scaled-down version of the Aurora Browse/MediaFrame system is still referred to as K2 BaseCamp Express.)
- **AVC-Intra** — Proxy encoders support both AVC-Intra 50 and AVC-Intra 100. For a list of supported partial file restore (PFR) formats, refer to [Operating Considerations: 3rd party archive considerations](#) on page 36 .
- **K2 Summit MDI** — A new K2 Summit MDI allows for detection of multiple-tiered bin structure.
- **Extended naming capabilities** — Longer names are now allowed for bins and assets. For more information, refer to [Asset and bin name limitations](#) on page 33.
- **Dockable Transfer Manager** — The Transfer Manager, which can be launched via the Window menu, can be docked as a preferred view within Aurora Browse. This works just like the other dockable windows, such as the search window and asset results list. In addition, the Transfer Manager can be configured into a saved view for quick recall.
- **Simplified Transfer Manager interface** — Multiple tabs of the Transfer Manager interface have been merged into a single view.
- **Extended transfer history** — Transfer Manager history now can extend up to one year.
- **Concurrent transfers** — For News, K2, K2 Summit, and Generic FTP MDIs, you can now specify a maximum number of concurrent transfers. The maximum number of transfers depends on the configuration of your system. For more information, see your Grass Valley representative.
- **Increased transfer capabilities for nearlines and other archives** — You can now manage transfers between multiple nearline systems, or between a nearline system and a Flashnet or Diva archive, from a single PC.
- **Enhanced keyword notepad** — Double-clicking keywords now launches an enhanced keyword “notepad”, which allows for a much more flexible dialog for editing keywords within Browse, Edit, etc. When the keyword is double-clicked, a pop-up dialog appears that shows the keyword thumbnail along with naming information, which can be extended to much more than a typical name character size.
- **Extended NetCentral audit trail** — MediaFrame support of NetCentral has been extended to incorporate an audit capability; NetCentral can now track the lifetime of an asset.

- **Updated SDK** — The SDK is fully supported. Refer to [About the MediaFrame/BaseCamp SDK](#) on page 30 .
- **New zoom capability** — You now have the ability to zoom in on long files, similar to Aurora Edit. Refer to [About the zoom knob](#) on page 30.

## Changes and features in previous releases

The following sections describe changes and features in past releases.

### Version 6.5.2

- **SiteConfig support** — Network configuration and software deployment across all Aurora products is supported by SiteConfig, Grass Valley's system management tool.
- **Administrator password** – The default administrator account on Aurora devices has credentials as follows:
  - Username: administrator
  - Password: adminGV!

SiteConfig expects these credentials by default.

- **Database configuration change** — The database needs to be configured in simple mode. You no longer need to run transaction log backups. If the database has previously been set to the full recovery model, you must update it to the simple model before upgrading to version 6.5.2. For more information, see the Additional Notes section of the release notes.

### Version 6.5.1.17

- **K2 Summit compatible** – The Aurora suite of software, including Aurora Browse, is compatible with the K2 Summit software.

### Version 6.5.1

- **The MediaFrame Config tool** — the MediaFrame server can now be configured with an application that facilitates the various MediaFrame setup.
- **Aurora Browse client installed locally on client PCs** — The Aurora Browse application is no longer a web-based application. In previous versions, it was installed on the MediaFrame server and served to individual client PCs via HTTP. In Aurora Browse 6.5.1, it is a Windows executable, like the Aurora Edit LD application, and is installed locally on each client PC.
- **Support for archives** — Aurora Browse is now compatible with version 6 of the SGL FlashNet archive product and version 6 of the DIVA archive product, as well as the Avalon archive, version 3.2



- **Round robin archiving of assets** — Aurora Browse supports a round robin method for distributing transfers requests from a K2, News, M-Series or Profile MDI server to multiple transfer servers.
- **Condor NAS** — Aurora Browse is now compatible with the Condor NAS used with K2 Storage Systems.
- **Collections** —a virtual folder workspace allows you to create public or private folders so that you and others can contribute references to the assets. Some of the uses for Collections include selecting clips for projects, selecting clips to be archived or restored, and requests for the media manager, all without actually moving or duplicating assets.
- **TransferTool now integrated** — In the Aurora Browse Client, you can drag and drop files and monitor transfer progress between devices.
- **Pinnable Windows** — the MediaFrame panels are now pinnable and relocatable so you can customize and resize MediaFrame tools within the application
- **Extended Custom Metadata types** — Custom Metadata now supports fields that are variable- and unlimited-sized text fields, date, pick list, and numbers
- **Enhanced Search** — use filters for flexible and efficient searches. You can now search device metadata and save commonly used searches for private or global use.
- **Expanded results window, with dynamically positioned columns** — you can customize a view using the column picker to show technical, general, or custom metadata when viewing search results.
- **Dynamic Keyword and Keyframe marking** — FeedClip features are now included as standard functions. This includes AutoMark for single button capture of events with preset duration. These automatic calculation features enable easy capture of sports highlights, sound bites, or shots of interest for development of stories from live footage or material in shared storage.

## Older versions

For information about older software versions not listed in these release notes, refer to the release notes for those versions.

# Version compatibility

Versions qualified for compatibility with this release of software are summarized in the following sections.

## System requirements

This section describes the recommended hardware requirements for this release.

<b>MediaFrame Server component</b>	<b>Recommended spec</b>
Model	Dell PowerEdge R610
Processor(s)	Two Intel Xeon E5520, 2.26 GHz
Memory	4 GB
System Drive	146 GB 15K RPM SAS
Network	Gigabit Ethernet
OS	Windows Server 2003 R2 32 SP2

<b>K2 BaseCamp Express component</b>	<b>Recommended spec</b>
Model	Dell PowerEdge R710
Processor(s)	Two Intel Xeon E5520, 2.26 GHz
Memory	4 GB
System Drive	Four 250 GB 7.2K SATA
Network	Gigabit Ethernet
OS	Windows Server 2003 R2 32 SP2

<b>MDI Server component</b>	<b>Recommended spec</b>
Model	Dell PowerEdge R610
Processor(s)	Intel Xeon E5520, 2.26 GHz
Memory	4 GB
System Drive	146 GB 15K RPM SAS
Network	Gigabit Ethernet
OS	Windows Server 2003 R2 32 SP2

<b>Aurora Proxy Encoder component</b>	<b>Recommended spec</b>
---------------------------------------	-------------------------

Model	Dell PowerEdge R610
Processor(s)	Two Intel Xeon E5520, 2.26 GHz
Memory	4 GB
System Drive	146 GB 15K RPM SAS
Network	Gigabit Ethernet
OS	Windows Server 2003 R2 32 SP2

## Compatible MediaFrame server and K2 BaseCamp Express components

The following components are prerequisites that reside on the MediaFrame server and K2 BaseCamp Express. Compatible versions are pre-installed on new servers shipped from the factory.

Product	Version	Comments
SQL	2005 SP3	
Internet Information Services (IIS)	Version 6	Under Web Service Extensions, make sure ASP.NET is allowed.
Web Services Enhancements	3.0	

## Aurora Browse components

The following components make up the Aurora Browse system and are compatible with this release of software as listed in the following table.

Component	Version	Comments
Aurora Browse client	7.0.0.57	Bundled in the MediaFrame Server install  Supported on Windows XP SP3 and Windows Vista Business Edition
MediaFrame server	7.0.0.107	
Aurora Proxy Encoder	7.0.0.59	Formerly referred to as Advanced Encoder
NAS on Serial ATA network platform	Not supported	
NAS on Linux Fastora platform	Not supported	

## Compatible Grass Valley products

Grass Valley products are compatible with this release of software as follows:

Product	Version	Comments
Aurora Edit	7.0.0.263	With compatible version of SQL
Aurora Ingest	7.0.0.53	With compatible version of SQL
Aurora Playout	7.0.0.33	With compatible version of SQL
Aurora Suite installer	7.0.0.263	
K2	3.3.1.1282 or 7.1.14.1281	GVG_MLib installer and Generic iSCSI installer with compatible version of SNFS.
K2-Aurora FTP	7.0.0.263	
SiteConfig application	1.4.0.451 or higher	—
SiteConfig Discovery Agent	1.1.188	—
Grass Valley prerequisite files	1.0.0	The prerequisite files must be installed on the SiteConfig control point PC.

## Compatible third party products

Products by manufacturers other than Grass Valley are compatible with this release of software as follows:

Product	Version	Comments
Acronis Imaging	8162	To create a recovery image for a MediaFrame server or Proxy Encoder, use a recovery CD, part number 063-8246-04.
Microsoft .Net Framework	3.5 SP1 / 2.0 SP2	Prerequisite for all Aurora machines. <b>NOTE: Install after IIS.</b>
DivArchive software	6.1.22	
SGL FlashNet software	6.1.40	After installing FlashNet MDI you need to make sure that the fnapi.dll in the

<b>Product</b>	<b>Version</b>	<b>Comments</b>
		C:\Program Files\ Grass Valley\ ManagedDevices\ FlashNET directory is the same version as the FlashNet Client software that is in C:\flashnet6\bin. If not copy the file in C:\flashnet6\bin to C:\Program Files\ Grass Valley\ ManagedDevices\ FlashNET.
Avalon software	See comments.	Avalon software is now "End of Service." The last supported version was 3.2.

# Upgrading Aurora Browse and MediaFrame systems

This section contains the tasks necessary for the upgrade to this release of software.

## Upgrading Aurora Browse and MediaFrame devices with SiteConfig

This section contains the tasks for using SiteConfig to upgrade to this release of software. Work through the tasks sequentially to complete the upgrade.

**NOTE:** *These upgrade instructions assume that current software is at version 6.5 or higher. If you have a lower version of software, contact Grass Valley Support before upgrading.*

**⚠ CAUTION:** *If you upgrade and then decide you do not want to stay with this version of software, you must use the recovery disk image process to downgrade to your previous version.*

## About upgrading Aurora Browse and MediaFrame devices with SiteConfig

With the upgrade instructions in this document, you use SiteConfig from a network connected control point PC and remotely upgrade software simultaneously on your Aurora product devices. This is the recommended process for software upgrades.

**NOTE:** *Do not use the upgrade instructions in this document if upgrading with SiteConfig for the first time.*

If SiteConfig was not used for your previous software upgrade, do not use the upgrade instructions in these release notes. Instead, use the *SiteConfig Migration Instructions*. Before you upgrade software using SiteConfig, each of your Aurora product devices must be migrated to become a SiteConfig managed device. This includes installing SiteConfig support on the device, manually uninstalling any and all Aurora components, and qualifying the device for communication with SiteConfig. These instructions are in the *SiteConfig Migration Instructions*. Also refer to the *SiteConfig User Manual* or *SiteConfig Help Topics*.

The upgrade instructions in this document apply to the following devices:

- MediaFrame server
- MDI server
- Aurora Proxy Encoder
- K2 Basecamp Express

To upgrade software using SiteConfig, you must first have SiteConfig set up for system management and software deployment in your facility. These upgrade instructions

assume that you have already done that for your K2 SAN. Then you add your Aurora product devices to the SiteConfig system description that you are using for your K2 SAN.

***NOTE: Do not attempt to upgrade software incrementally across the devices of a K2 SAN while media access is underway. Online software upgrading is not supported.***

The following installation tasks provide information specifically for the upgrade to this version of software. Read the information in these sections carefully before attempting any upgrade to software.

## Prepare for upgrade

Before upgrading, do the following:

- Procure the software installation files for this release via the appropriate distribution method, such as download, CD-ROM, network drive, or external drive.
- Start up the devices you are upgrading, if they are not already started.
- Stop all media access on the devices you are upgrading.
- Shut down all applications on the devices you are upgrading.

## Prepare SiteConfig for software deployment

Do the following to prepare SiteConfig for the software upgrade.

1. Make the following files accessible to the SiteConfig control point PC:
  - MediaFrameServer software installation (\*.cab) file
  - AuroraProxyEncoder software installation (\*.cab) file
  - GenericISCSI software installation (\*.cab) file
  - GVGMLib software installation (\*.cab) file
  - PCmonitoring software installation (\*.cab) file
  - Aurora Suite - software installation (\*.cab) file
2. If a newer version of SiteConfig is available for upgrade and you have not yet upgraded SiteConfig, do the following:
  - a) From Windows Add/Remove programs, uninstall the current version of SiteConfig from the control point PC.
  - b) Install the new version of SiteConfig on the control point PC.

## Install prerequisite files on the control point PC

Some software components, such as those for Aurora products, share common prerequisite software. You must install a prerequisite software package on the control point PC to make the prerequisite software available for software deployment to devices.

1. Check release notes for the required version of prerequisite files, if any.

2. On the SiteConfig control point PC, open Windows Add/Remove programs and look for **Grass Valley Prerequisite Files**, then proceed as follows:
  - If the required version of prerequisite files is installed, do not proceed with this task.
  - If prerequisite files are not installed or are not at the required version, proceed with this task.
3. Procure the required prerequisite software installation file. The file name is *Prerequisite Files.msi*.
4. On the SiteConfig control point PC, run the installation file. The installation program copies prerequisite files to *C:\Program Files\Grass Valley\Prerequisite Files*.

## Upgrade K2 systems

Prerequisites for this task are as follows:

- If upgrading a K2 SAN, all SAN clients must be offline (all media access stopped) or shut down. Depending on your system design, this could include devices such as K2 clients, K2 appliances, Aurora Proxy (Advanced) Encoders, MDI server, Aurora Edit clients, Aurora Ingest clients, Aurora Playout clients, and generic clients.

Upgrade your K2 systems to the compatible version of K2 system software. This includes K2 SAN systems and stand-alone K2 Media Client and K2 Summit Production Client systems. Refer to *K2 Release Notes* for procedures.

## Distribute devices into deployment groups

You can gather devices of different types into a SiteConfig deployment group. This allows you to deploy software to all the devices in the deployment group at the same time, as part of the same deployment session. Based on the roles you have assigned to the devices, SiteConfig deploys the proper software to each device. This increases the efficiency of your software deployment with SiteConfig.

If you have not already done so, configure your deployment groups. The recommended deployment group distribution is as follows. Depending on your system design, your system might not have all the device types listed.

- In a deployment group named "Aurora\_Edit\_Ingest\_Playout", place the following devices:
  - Aurora Edit workstation of any storage options: Shared storage, NAS storage, and stand-alone.
  - Aurora Edit LD computer
  - DSM
  - Conform Server
  - SmartBin Server



- FTP Server
- Aurora Ingest Platform
- IEP
- Aurora Playout Platform
- In a deployment group named "Aurora\_Browse\_MediaFrame", place the following devices:
  - MediaFrame server
  - MDI server
  - Aurora Proxy Encoder
  - K2 Basecamp Express
- If you have a K2 Nearline SAN (NAS), in a deployment group named for the SAN system, place the following devices:
  - The Nearline SAN's K2 Media Servers.

## **Upgrade Aurora Edit, Ingest, and Playout systems**

Prerequisites for this task are as follows:

- K2 systems are upgraded to the compatible version of K2 system software.
- All Aurora Browse and MediaFrame devices are offline (all media access stopped) or shut down.

Upgrade your Aurora Edit, Ingest, and Playout systems to the compatible versions of software. Refer to each Aurora product's release notes for procedures.

## **Upgrade NAS systems**

Prerequisites for this task are as follows:

- K2 systems are upgraded to the compatible version of K2 system software.
- Aurora Edit, Ingest, and Playout systems are upgraded to the compatible versions of software.

Upgrade the MediaFrame Proxy NAS (K2 Nearline SAN) to the compatible version of K2 software. Use SiteConfig and deploy software, using steps similar to those for other systems.

- a) Check software on the Nearline SAN's K2 Media Servers.
- b) Add software \*.cab file to the deployment group that contains the K2 Media Servers.
- c) Upgrade software on K2 Media Servers via a SiteConfig deployment session.

## Install High Priority Windows updates (recommended)

- Windows “High Priority” updates are recommended, but not required. While you have devices in an offline state to upgrade software, you should check to see if there are any new updates that you need to install. Use standard Windows procedures.

**△ CAUTION:** *Only “High Priority Updates” should be installed. Do not install other Windows or driver updates unless specifically directed by product documentation or by Grass Valley Support.*

## Check all currently installed software

Prerequisites for this task are as follow:

- The device is assigned in the SiteConfig system description and network connectivity is present.
- SiteConfig is able to log in to the device using the username/password credentials assigned to the device.
- The SiteConfig control point PC does not have a network drive mapped to an administrative share (such as C\$) on a device on which you are checking software.
- If the SiteConfig Network Configuration Kit and/or Discovery Agent at version lower than 1.1.0.185 is currently installed, it must be manually uninstalled and updated. For more information refer to *SiteConfig Migration Instructions*.
- If Aurora product software at a version lower than 6.5.2 is currently installed, it must be manually uninstalled. For more information refer to *SiteConfig Migration Instructions*.

Do the following steps on the devices that you are upgrading.

1. In the **Software Deployment | Deployment Groups** tree view, right-click the top-most node for the group or any individual device and select **Check Software**.

**NOTE:** *If you have access problems, verify that the administrator account on the device has credentials as currently configured in SiteConfig. By default credentials on the device should be administrator/adminGV! for Aurora devices and Administrator/adminK2 for K2 devices.*

The Check Software dialog box appears. SiteConfig searches for software on the selected device or devices and gathers information. Progress is reported.

2. When the check is complete for the selected device or devices, close the Check Software dialog box.

An updated list of all currently installed software is displayed in the **Software Deployment | Devices | Installed Software** list view. If software is a SiteConfig managed software package, information is displayed in the Managed Package and Deployment Group columns.

### Related Links

*About installing SiteConfig***Add software package to deployment group for Aurora Browse devices**

Prerequisites for this task are as follows:

- You can access the software package file from the SiteConfig control point PC.
- The devices to which you are deploying software are in a deployment group.

To review which Browse/MediaFrame software roles to install on which machine, see the *Aurora Browse Installation and Configuration Manual*.

Use the following procedure to add one or more software package installation files to the deployment group that contains the devices in the following list. Depending on your system design, you might not have all of the device-types listed:

- MediaFrame server
- MDI server
- Aurora Proxy Encoder
- K2 Basecamp Express
- AuroraSuite

For this release of software, identify and add software package installation files as follows:

Software	File name
MediaFrame Server	<i>MediaFrameServer_7.0.0.xxxx.cab</i>
Aurora Proxy Encoder	<i>AuroraProxyEncoder_7.0.0.xxxx.cab</i>
Aurora Suite	<i>AuroraSuite_7.0.x.xxxx.cab</i>
Grass Valley Windows Monitoring SNMP agent	<i>PCMonitoring_x.x.x.xx.cab</i>

Depending on the K2 software version of your K2 SAN, also add software package installation files as follows:

**NOTE: Add files for either 3.x OR 7.x. Do not add files for both 3.x AND 7.x.**

- If your devices access storage on a K2 software version 3.x K2 SAN, add software package installation files as follows:

Software compatible with 3.x K2 SAN	File name
Generic iSCSI client	<i>GenericISCI_x86_3.3.x.cab</i>
GVG MLib software	<i>GVG_MLib_3.3.1282.cab</i>

- If your devices access storage on a K2 software version 7.x K2 SAN, add software package installation files as follows:

Software compatible with 7.x K2 SAN	File name
Generic iSCSI client	<i>GenericISCI_x86_7.1.14.1281.cab</i>

Software compatible with 7.x K2 SAN	File name
GVG MLib software	GVG_MLib_7.1.14.1281.cab

SNFS is bundled with the Generic iSCSI cab file.

1. In the **Software Deployment | Deployment Groups** tree view, select a deployment group.
2. Click the **Add** button.

The Add Package(s) dialog box opens.

3. Do one of the following to select the software package:
  - Select from the list of packages then click **OK**.
  - Click **Browse**, browse to and select the package, then click **Open**.
4. If one or more EULAs are displayed, accept them to proceed. If you do not accept a EULA, the associated software is not assigned to the deployment group.

SiteConfig adds the package to the deployment group.

The package appears in the Managed Packages list for the selected deployment group. SiteConfig creates new software deployment tasks for the package and displays them in the Tasks list view.

## Setting deployment options

Pre-requisites for this procedure are as follows:

- A software package has been assigned to the deployment group and applicable deployment tasks are now displayed in the Tasks area.
1. In the **Software Deployment | Deployment Groups** tree view, select a deployment group.
  2. In the Tasks list view, view tasks and determine if you must set deployment options. Tasks that need to have deployment options set display in the Details column a message stating "Deployment options required."  
If you select a task that needs to have its deployment options set, the Start Deployment button is disabled and the message is displayed next to the button.
  3. Proceed with next steps to set deployment options for the following:
    - GVG\_MLib
    - MediaFrame Server
    - Proxy Encoder
    - Aurora Suite
  4. Do one of the following to set deployment options:
    - Double-click the task.

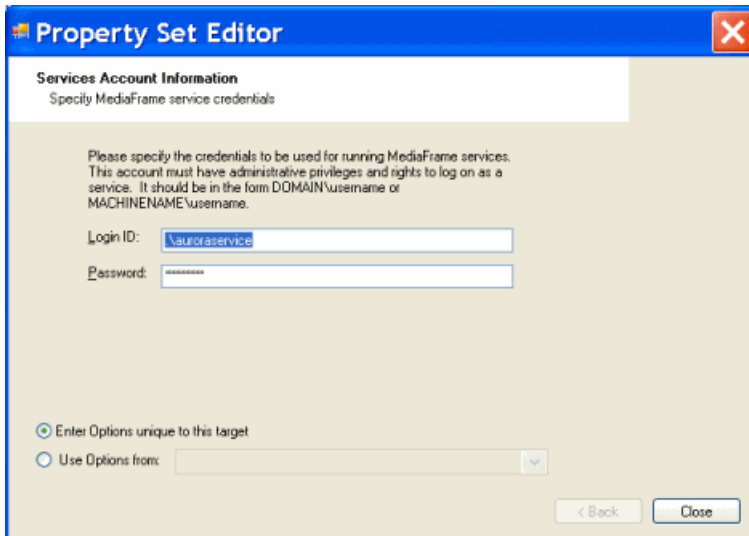
- Select the task and click the **Options** button.

A wizard opens.

5. Work through wizards and set deployment options as follows:

Software	Deployment options
GVG_MLib	Enter the name(s) of the K2 Media Server(s) with role of file system server (FSMs)

MediaFrame  
Server and  
Proxy  
Encoder



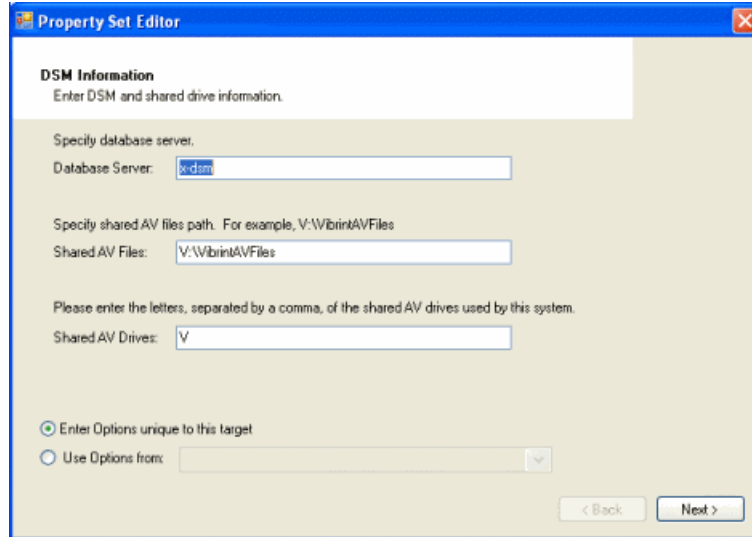
Enter the service credentials to be used. You can enter a domain account or a local account in the format domain\accountname or machinename\accountname. In the case of using a local account, it is advisable to enter it as ".\accountname" where the "." means a local account. Entering the local account in this way allows you to use the "Use options from" feature for all other devices of the same type. Once you enter the local account in this way on the first device, it becomes the template from which options for other devices are copied.

---

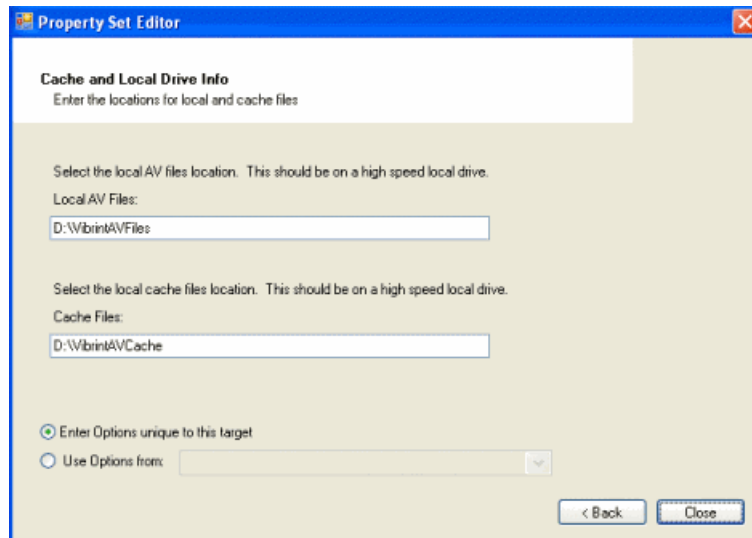
**Software    Deployment options**

---

Aurora Suite



Enter the Database server (DSM,) shared AV files, and shared AV drives.



Enter local AV files and cache files.

- 
6. If you have multiple devices of the same type, you can enter deployment options for one of them using the wizard. Then, when you bring up the same wizard on every device, you can choose the **Use options from** radio button and select the first device for which you set options. SiteConfig copies the options you set for the first device and fills in the blanks on the wizard.

## Upgrade software on Aurora Browse devices

Prerequisites for this task are as follows:

- The devices that you are upgrading are in a deployment group.
- For the software you are upgrading, you have added a newer version of that managed software package to the deployment group.
- Prerequisite files are installed on the control point PC.
- You have recently done the SiteConfig "Check Software" operation on the devices you are upgrading.

If you are upgrading multiple software components for which there is a required sequence, you must check and uncheck tasks and run multiple deployment sessions to control the sequence. For some software components, SiteConfig aids you by enforcing dependencies. For each individual software component, SiteConfig enforces an uninstall of the current version of software before installing the upgrade version. SiteConfig provides uninstall deployment tasks and install deployment tasks to indicate the taskflow. SiteConfig can do the uninstall/install in a single deployment session.

1. In the **Software Deployment | Deployment Groups** tree view, select the device or the group of devices to which you are deploying software.  
The corresponding software deployment tasks are displayed in the Tasks list view.
2. For the software you are deploying, select the **Deploy** check box in the row for the uninstall task.

**NOTE:** *If you manually uninstalled or installed software, the uninstall task might not appear or it might appear with a different package name.*

3. For the software you are installing, select the **Deploy** check box in the row for the install task.

For upgrading Aurora Browse and MediaFrame and Aurora Suite devices to this release, deploy the following tasks:

Deploy	Managed Package	Action
✓	MediaFrameServer xxxx.xxxx	Uninstall
✓	MediaFrameServer 7.0.0.xxxx	Install
✓	AuroraProxyEncoder xxxx.xxxx	Uninstall
✓	AuroraProxyEncoder 7.0.0.xxxx	Install
✓	GenericISCI x86 xxxx.xxxx	Uninstall
✓	GenericISCI x86 xxxx.xxxx (version must be compatible with K2 SAN)	Install
✓	GVGMLib xxxx.xxxx	Uninstall

Deploy	Managed Package	Action
✓	GVGMLib xxxx.xxxx (version must be compatible with K2 SAN)	Install
✓	PCmonitoring x.x.x.xx	Install

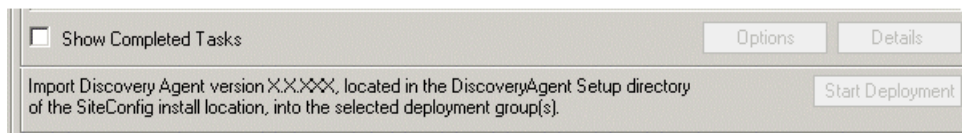
Also, you must upgrade SNFS with this release, so deploy the following tasks at the same time:

Deploy	Managed Package	Action
✓	SNFS nonK2 xxxxxx	Uninstall
✓	SNFS nonK2 3.5.1.12630	Install

When using SiteConfig for upgrades, the SNFS upgrade is required even if you are already at version 3.5.1.12630. The upgrade resets SNFS version information for SiteConfig.

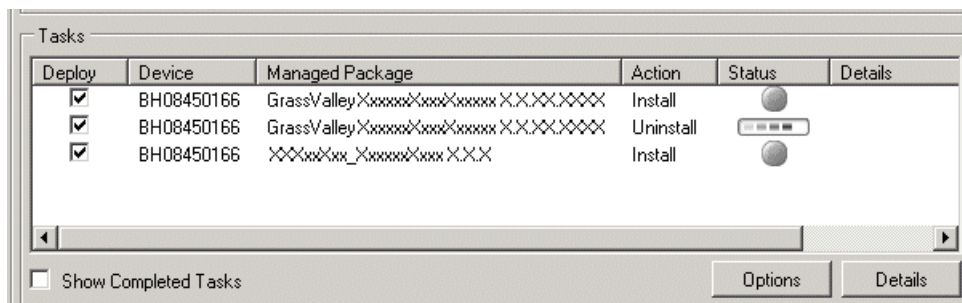
**NOTE: If there are dependencies, SiteConfig can enforce that some tasks be deployed together.**

4. Check the area next to the Start Deployment button for a message.



If a message instructs you to upgrade the Discovery Agent, on the control point PC go to the directory to which SiteConfig is installed, find the *DiscoveryAgent\_x.x.x.x.cab* file, add it to the deployment group, and deploy the Discovery Agent software as well.

5. Click the **Start Deployment** button.



Deployment tasks run and software is uninstalled. Progress is reported and next steps are indicated in both the Status and Details columns. If an error appears



regarding prerequisite software, install the prerequisite files on the control point PC and then repeat this step.

6. When the Status or Details columns indicate next steps, identify the software in the row, then do one of the following:
  - For K2 software, when Details displays a **Restart required** link, click the link and when prompted "...are you sure...", click **Yes**.

The device restarts.

Deployment tasks run and software is installed. Progress is reported and next steps are indicated in both the Status and Details columns.

7. When the Status or Details columns indicate next steps, identify the software in the row, then do one of the following:
  - For K2 software, when Details displays a **Restart required** link, click the link and when prompted "...are you sure...", click **Yes**.
8. Monitor progress as indicated by both the Status and Details column. When finished, the Status column indicates complete.
9. Restart all MediaFrame devices. This last restart is required, regardless of whether the Details column does or does not display "Restart required".

## Install Browse client PC application

The Aurora Browse client application runs on the local PC. If the Aurora Browse client application is already installed, any upgraded software on the MediaFrame server is automatically detected and a message box prompts you to upgrade your Aurora Browse client application. Follow the prompts to upgrade the software. If you do not upgrade software as prompted, the automatic prompt is disabled for future upgrades. To enable the automatic prompt you must re-install the Aurora Browse client application.

If the Aurora Browse user has administrator privileges you can use *setup.exe* to install the Aurora Browse application on the client PC. The executable file installs the prerequisites and the Aurora Browse application. If the Aurora Browse user does not have administrator privileges, an administrator needs to install all the prerequisites for the user. The user then can install the Aurora Browse application by using the AuroraBrowse.application installer.

Use the following steps to install the Aurora Browse client application.

1. Make sure that the PC has been licensed for the particular user role. See the *Aurora Browse Installation and Configuration Guide* for specific instructions on roles and licensing.
2. Navigate to the location of the Browse installation file on the MediaFrame server share. The path is:  
`\\<MediaFrameServerName>\AuroraBrowse`
3. Once you have installed the Browse client software, you will need to enter the name of the MediaFrame server.

## **Logging in to the Aurora Browse client PC**

1. To log in to Aurora Browse, select **Programs | Grass Valley Aurora Browse | Aurora Browse**. Aurora Browse will check your settings before the user interface displays.
2. If this is the first time you have accessed Aurora Browse, a dialog box displays asking you for the name of the Aurora Browse server. If you need to change this name later, select *File | Connect to server*.

For information on using the Aurora Browse client application, see the *Aurora Browse User Guide* or the Help menu of the Aurora Browse client application.

# Licensing Grass Valley products

The following sections contain instructions for managing Grass Valley product licenses.

## About software licensing

Licenses are requested through the License Wizard and managed through the SabreTooth License Manager, which is installed on the Grass Valley product with the Grass Valley software. The License Wizard and SabreTooth License Manager must be located on the Grass Valley product.

License information is stored in text files that you can manage just like any other file on your system. Licenses are unique to the system for which they are requested and cannot be used on any other machine. You should back up the license text files to a separate drive or as part of a recovery image.

Licenses are based on your system's unique identifier, which is partially derived from your system's Media Access Control (MAC) address. If you change your system's MAC address by performing operations such as changing the System Processor card, you must obtain a new license based on the new MAC address.

## Requesting a license

Software licenses are unique to the system for which they are purchased. They cannot be used on any other system. This requires that you provide a generated unique ID for the desired system to Grass Valley, which is then used to create your unique license.

1. Log on to the device that you want to license.

You must log in as a Windows administrator with a local account, not a domain account.

2. Open the License Request Wizard.

Find the License Request Wizard shortcut on the Windows desktop.

The License Request Wizard displays.

3. Read the on-screen instructions, then click **Next**.

The Customer dialog box displays.

4. Enter the information requested on this page then click **Next**.

You must provide a valid email address to receive your license file.

The Sales Number dialog box displays.

5. Enter the Sales Order Number in the field then click **Next**.

Typically the Sales Order Number is found on the Software License sheet that you received with your Grass Valley product.

The Summary dialog box displays.

6. Review the License Request information and click **Finish**.

A License Request text file, *License\_Request\_<SalesNumber>.txt*, is generated and saved to the Windows Desktop.

**NOTE:** *If you are requesting licenses for more than one application, be sure to modify the name of the first License Request text file before saving it to your desktop. (In Notepad, use the Save As command.) Otherwise, the second License Request text file will overwrite it.*

7. If you have K2 Summit Production Client or K2 Solo Media Server and if the write filter is currently enabled, be aware that files on the desktop are lost on restart. Therefore do one of the following:

- Save the License Request text file(s) to a different location.
- Keep the K2 system running (do not restart) until after you have requested the license(s).

8. Do one of the following:

- Attach the License Request text file to an email.
- Paste the text directly into an email message.

You might want to keep a copy of the message for your records.

9. Send the email as instructed by the License Request Wizard.

An email will be sent from Grass Valley to the return email address you specified; your SabreTooth software license will be provided as a text file.

10. Save this email in case you ever need to re-image this machine.

Next add the license to the SabreTooth License Manager.

### **If you encounter difficulties when requesting a license**

If you encounter difficulties running the License wizard, try this alternate method:

1. Generate a unique ID of the device where you will install software, as follows:
  - a) Click on the License Manager icon on the Windows Desktop.

The SabreTooth License Manager opens.
  - b) Choose **File | Generate Unique Id** the License Manager.
  - c) Click **Copy to clipboard** to copy the generated ID, and **OK** to exit.
2. Prepare an email that includes the following information:

- Customer Name
- Customer Email
- Sales Order Number
- Unique ID of the device where you will install software.

3. Send the email to [K2License@grassvalley.com](mailto:K2License@grassvalley.com).

The SabreTooth license number will be emailed to the email address you specified.

## Adding a license

Your software license, *Licenses\_<SalesNumber>.txt*, is provided as a text file. Use the License Manager to add this file to your system and enable the desired feature.

1. Click on the License Manager icon on the Windows Desktop.

The SabreTooth License Manager opens.

2. Do one of the following:

- Choose **File | Import License** and navigate to the file location to open the text file.
- Drag and drop the text file onto the License Manager.

You will now see the permanent license in SabreTooth, as well as any other licenses, permanent or temporary, that have been installed on this machine.

Once you have added the permanent license, you can delete the temporary license. If the temporary license is still in SabreTooth you will continue to get temporary license notifications, even with the permanent license installed, unless you delete the temporary license.

You should save the permanent license to a backup system.

## Deleting licenses

Deleting a license disables the feature that it enabled. You might want to delete a temporary license prior to its expiry if you have decided not to purchase the feature. You can delete a temporary license after the permanent license has been installed without disabling the licensed product.

1. Select the license in the SabreTooth License Manager.
2. Use the Delete key on your keyboard or right click with your mouse and select **Delete**.

# ***New topics***

This section contains new or modified topics associated with this release of software.

## **About the MediaFrame/BaseCamp SDK**

The MediaFrame/BaseCamp SDK lets developers customize the MediaFrame/BaseCamp functionality.

The MediaFrame SDK requires a Sabretooth *BaseCamp-Integration* license to run. A separate license is needed for each process that the MediaFrameAppPool uses. For released systems this is typically set to **2**. Contact your Grass Valley representative for more information.

## **About the zoom knob**

The zoom knob lets you browse a specified length of the asset.

The zoom knob focuses the seekbar on a section of the timeline. You can specify increments of time such as one second or one minute, or you can rotate the knob up to "full," which causes the seekbar to display the entire asset.



In this example, the zoom knob is set to one minute. The gray line shows the section that the seekbar has zoomed in on, and orange lines indicate the areas of the asset that are outside the zoom section.

## Additional notes

The following sections contain additional information about this release.

### About using MediaFrame with non-English languages

When using MediaFrame with a non-English language, asset name length and search behavior might be affected. If using unicode, the encoder can be configured to support UTF-8.

- **How searches work** -- All of the text in the MediaFrame database is indexed using a full-text index rather than searching for a specific string of characters. This index is used when you search using the Word or Phrase in the Asset Metadata text field. (It is not used in the All or Part of the Asset Name text field.) In a full-text index, before the data can be indexed the word boundaries must be determined. The index uses a 'word breaker' to determine where the word boundaries are.
- **Non-English searches** -- Different languages might determine word boundaries differently. This could affect searching for non-English text. An administrator can configure the MediaFrame database settings to the appropriate language word breaker. (Some languages, such as Chinese, deal with regional language differences by using different versions of word breakers depending on the region.) For information on modifying the database for non-English searches, see [Modifying the MediaFrame database for non-English searches](#) on page 32.
- **Bin name limitation** -- Regardless of the language used for the asset names, bin names need to use the Latin-1 character set as defined in the ISO 8859-1 standard.
- **File path limitation** -- If using the Latin-1 character set, the file path, bin name, and asset name can include up to 259 characters (including separators such as \) . The number of characters might be less than 259 if using other character sets. Try to limit path names to less than 150 characters. For more information on name limitation issues, see [Asset and bin name limitations](#) on page 33.
- **Generic FTP and unicode** -- The Generic FTP MDI supports UTF-8 for Aurora Browse version 6.2.1.124, 6.5.2.29, and 7.0.0.108 or higher.
- **Encoders and unicode** -- If your system is encoding assets that use unicode languages, the Aurora FTP communication format needs to be set to UTF8. For more information, see [Configuring the encoder for unicode languages](#) on page 34.

### Modifying the MediaFrame database for non-English searches

To enable the MediaFrame database to allow searches in non-English languages, such as Chinese, the database needs to be modified.

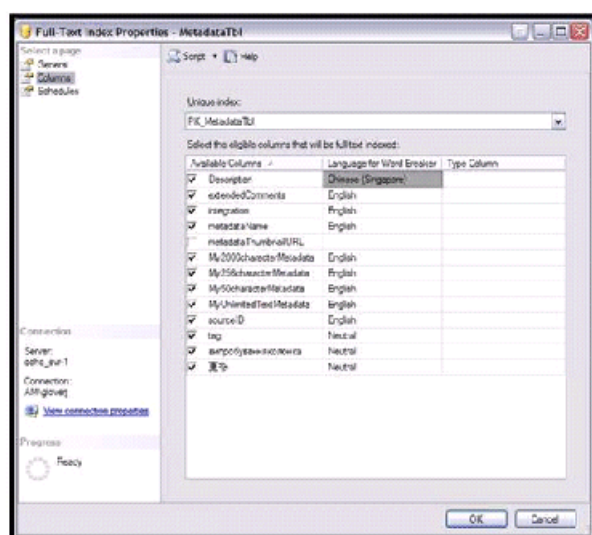


Because it will take some time to re-index the data, this procedure should be performed when the system is not in prime use. This procedure will not affect operations aside from search functionality.

1. Open the Microsoft SQL Server Management Studio tool and select **Databases | MediaFrame | Tables**.
2. Right-click on the `dbo.MetadataTbl` table and select **Full-Text Index | Properties**.

The Full-Text Index Properties dialog box displays.

3. Select the Columns page.
4. For every column that has a check mark in the Available Columns column, click on the Language for Word Breaker column and use the drop-down list to select the appropriate language.
5. Once all the values are correct, click **OK**.



The indexes are rebuilt with the new word breaker.

## Asset and bin name limitations

The asset name, bin name, and path can include up to 259 characters (including separators such as \). Some parts of the file path are not visible in AppCenter or Aurora applications.

The file system limits the number of bytes in a name as well as the number of characters. The full count of 259 characters applies to names in English and other languages referred to in ISO 8859-1. The number of characters might be less than 259 with some other character sets.

The following table breaks down the character length restrictions for the sample file system path of `\media\mybin1\mybin2\MyVideo.cmf\MyVideo.xml`.

<b>Asset name, bin name, and path (up to 259<sup>1</sup> characters, including separators such as \)</b>				
Sections of an asset/path name	The rest of the path name (i.e. everything apart from the bin and asset names)	Bin name	Asset media directory and extension	Asset name and extension
Naming limitation	This part of the path name is not visible in AppCenter or Aurora applications.	The bin name can be up to 227 characters (which would leave room for only a 1-character asset name)  <b><i>NOTE: The bin name must be in English or another language referred to in ISO 8859-1.</i></b>	This part of the path name is not visible in AppCenter or Aurora applications. The directory name is the same as the asset name. 4 characters are reserved for the extension.	The extension is not visible in AppCenter or Aurora applications. At least 25 characters are reserved for the asset name and extension, even if they are not all used.
File system example	<code>\media</code>	<code>\mybin1\mybin2</code>	<code>\MyVideo.cmf</code>	<code>\MyVideo.xml</code>

**NOTE:** Try to limit path names to less than 150 characters.

## Configuring the encoder for unicode languages

If your system is encoding assets that use unicode languages, the Aurora FTP communication format needs to be set to UTF-8. To configure the encoder for unicode, follow these steps.

1. From the Start menu on the encoder, select **Programs | Grass Valley | Aurora FTP**.
2. In the AuroraFTP configuration dialog box, click the Communication format drop-down list.
3. Select **UTF8** and click **OK**.

The encoder is configured for unicode languages.

<sup>1</sup> The full count of 259 characters might not be available with some character sets.

# Operation considerations

The following sections contain additional information about operating your product devices.

## Operating Considerations: Aurora Browse Client

- **Browse 6.5 workspaces are not upgraded to 7.0** -- You need to recreate workspaces in 7.0.
- **Tooltip behavior** -- Once a button/control has been clicked/pressed/selected, its tooltip is not shown again. This is due to the way the Microsoft Windows UI was designed.
- **Print metadata button** -- The print metadata button is designed to print only basic and keyword metadata, not custom.
- **Display setting** -- Aurora Browse needs to be run on machines that have a display setting of 96 DPI.
- **Using "All Offline is true" search filter** -- This filter searches only assets that are offline (in the archive). It does not search assets that are both online and offline.
- **Aurora Browse and Vista** -- For Aurora Browse to work with Windows Vista, make sure the following conditions have been met:
  - Turn off the Vista Firewall. This is located in the Control Panel – Security section.
  - The Browse PC needs to be recognized on the Aurora network and the Browse login must be one of the users defined on the MediaFrame server. The Browse client will establish communication with the ASK server (MediaFrame server) and will fail unless the credentials on the Browse PC and MediaFrame server match.

## Operating Considerations: MediaFrame Server and MDIs

- **MDI Name** -- Do not change the MDI name. If this needs to be done, you must update the database manually.
- **Profile XP installation** -- Install the Profile XP software before installing MediaFrame or SabreTooth software. If it is installed after, uninstall the SabreTooth Standalone software and then re-install it. You can do this by re-installing MediaFrame software or install the MediaFramePrereq.exe software that is included with the MediaFrame software installs.
- **SmartBin Encoder record duration** -- Because of the size limit on the cache drive (232GB), the longest duration that can be recorded is 10 hours for 50Mbs, 6 hours for 75Mbs and 5 hours for 100Mbs.
- **EDL locations** -- As of 6.5, EDL operations are handled by Aurora Edit.
- **Programs, playlists, and complex movies** -- Programs, playlists and complex movies are not supported. (K2 and Profile.)

## Operating considerations: K2 BaseCamp Express

- **BaseCamp Express and low-res for rendered sequences** -- Because K2-Aurora FTP only supports simple clips, K2 BaseCamp Express systems do not support creating low-res for rendered sequences.

## Operating Considerations: Aurora and K2 systems

- Asset and Bin name limitations -- When using Aurora products with a K2 3.x system, clip asset and bin names need to be 32 characters or less.
- Non-hierarchical bins — When using Aurora products with a K2 3.x system, only non-hierarchical (non-nested) bins are supported.

## Operating Considerations: 3rd party archive considerations

Partial File Restore (PFR) support in 7.0.0 is described in the following table. Full archive and restore is supported in all of the listed formats.

Supported	SGL Flashnet	Diva
Ancillary data	No	No
AVC-I	No	No
Audio (16, 24, PCM)	Yes	Yes
DV25	Yes	Yes
DV50	Yes	Yes
DV100	Yes	No
IMX/D10	Yes	Yes
MPEG I-Frame	Yes	Yes
MPEG LGOP	Yes	Yes
Source timecode	Yes	Yes

Below are additional archive considerations:

- **FlashNet and MediaFrame Server** -- MediaFrame systems that use a FlashtNet archive and were upgraded from version earlier the 6.5.2.22 or 6.5.1.120 need to run the *ClearFlashNetLocations.bat* file. This file is located on the MediaFrame server under *C:\Program Files\Grass Valley\MediaFrame\Database\Support\ClearFlashNetLocations*.

- **FlashNet and Profile/UIM** -- The FlashNet archive installer needs to make accommodations when connecting to a Profile/UIM system. In the comm\_methods file, UIMs are configured exactly the same way as a Profile XP system, except that the UIM becomes the “FC” entry in the “@” clause. For a Profile XP system on its own: Profile\_IP\_Address 6 @profile\_FC\_Address/movie. For a UIM: Profile\_IP\_address 6 @UIM\_IP\_Address/movie. This is because the CONTENT (directory listing) of the system is picked up through a Profile "sdss" client, while the DATA is moved via Fibre Channel. With the UIM again the clipnames are found via 100Bt interface from a Profile, then the DATA is moved via the GigE interface on the UIM.
- **Avalon frame synch** -- Partial File Restore assets from Avalon in NewsFTP/Aurora FTP systems can have high-res and low-res out of synch by two frames. Avalon software is end of service.
- **Diva tape or disk archives** — To explore disk-based or tape-based archives, the Diva MDI configuration must specify the name of the archive(s) in the Disk Array Names field of the MediaFrame Configuration tool. For more information on configuring the Diva MDI, see the *Aurora Browse Installation and Configuration Guide*.
- **FlashNet clip deletion** — There can be a problem where the FlashNet archive does not reclaim space after clips are deleted. To solve this problem, contact SGL for assistance.
- **Restoring assets to SmartBins or Scavenge folder from an archive** — not recommended. To avoid creating disassociated assets, restore to a non-scavenge folder instead.
- **Avoid partial file restores to reverse-wink SmartBin folders** — Partial File Restore (PFR) of Aurora Assets into a reverse-wink, SmartBin folder is not recommended. Restore to another folder instead.
- **Unicode characters** — Only Diva supports unicode characters.

# Known Issues

The following limitations are present in this release of software. If you wish to obtain more information about these limitations, please mention the reference numbers.

---

CR86834	Description:	If the LAN cable is pulled out while a data transfer is in progress, the Flashnet archive MDI does not automatically reconnect.
	Workaround:	After you reconnect the LAN cable, stop the Flashnet MDI and restart it to ensure future archives and restores will occur. (To start or stop the service, select Start   Settings   Control Panel   Administrative Tools   Services. The Services Control Panel opens. Select the Flashnet MDI, and right click Start or Stop.)
CR78273	Description:	DIVA transfers fail if the IP address is not used for the configured SourceName/DestinationName.
	Workaround:	This setting is in the DIVArchive Configuration Utility, not the MediaFrame DIVA MDI configuration page. In the utility, the source and destinations name configured must be the same as the IP address of the servers they are referring to.
CR50770	Description:	DIVArchive and FlashNet restore operations fail if the destination folder has clips with the same base name as the clip to be restored. This occurs even if duplicate name handling is enabled. The specific condition that causes the failure is when the name of the clip to be restored is clipname, and the destination folder has a clip named clipname and a clip named clipname_0.
	Workaround:	Users must restore to a different destination folder or delete/rename the clips in the destination folder that have the same basename as the clip to be restored.
CR71891	Description:	If a FlashNet partial file restore is interrupted (for example, if the network cable is disconnected mid-transfer), Browse incorrectly receives a “DONE” message from the archive and subsequently displays a complete status. The asset will have low res but no actual high res.
	Workaround:	Ignore the “DONE” message, reconnect the network, restore again.
CR71921	Description:	During FlashNet archive transfers, the status messages show an incorrect % done messages, even though the transfer is correct. The incorrect message goes from 0% straight to 100%, or it stays at 0% even when done. Restore status messages are correct.

---

	Workaround:	This is a user interface display problem only. Ignore the % done messages.
CR69678	Description:	Aurora Browse shows invalid archived asset/group/volume(s) for FlashNet.
	Workaround:	Restart Thomson FlashNet MDI. This re-synchronizes the Aurora Browse database with the FlashNet archive file system. The problem occurs when you modify (add/delete) the FlashNet archive file system using some tool other than Aurora Browse. For example, if you label the FlashNet group/volume(s) using dtool.exe (supplied by SGL) or archive/delete an asset using testapi.exe or any other SGL supplied tool, you cause the problem. Since Aurora Browse does not support bi-directional synchronization with FlashNet archive, the Aurora Browse database goes out of sync with FlashNet.
CR75426	Description:	NTFS MDI cannot detect if a remote machine is online. This occurs if NetBIOS has been disabled.
	Workaround:	On machines monitored by the NTFS MDI, such as the Proxy NAS or the MediaFrame server, NetBIOS is enabled by default at the factory. Do not change this configuration. The NTFS MDI uses port 139, which becomes unavailable when NetBIOS is disabled
CR58258	Description:	GXF import (from within Aurora Edit) into a scavenge bin fails.
	Workaround:	Import file into non-scavenge folder. When the import is complete, move the clip to the scavenge folder.
CR57788	Description:	If one Aurora Browse user attempts to delete an asset at the same time another Aurora Browse user is viewing the clip, the High-resolution material will be deleted, however the proxy will remain.
	Workaround:	After the other user is no longer viewing the clip, retry deletion of the asset.
CR59288	Description:	On certain systems, occasional delayed write popup windows occur during Smart Bin Ingests. Both High-resolution Aurora Edit material and proxy are successfully created, however the popup dialog windows remain on the Smart Bin Encoder computer.
	Workaround:	Periodically, the Smart Bin Encoder should be monitored and these windows closed.
CR58568	Description:	Aurora Browse will not scavenge audio-only assets.
	Workaround:	No workaround available.
CR92283	Description:	If you transfer a single asset to an archive that already has an asset of that name, a dialog box appears asking if you want to rename the asset. If you transfer a batch of archives without

		enabling auto-rename, no dialog box prompts you to rename the assets; instead Browse returns an error message.
	Workaround:	Specify auto-rename before archiving the batch of assets.
CR86742	Description:	When archiving to SGL 6, the status page does not show transfer updates. The status jumps from 0% to 100%.
	Workaround:	No workaround available.
CR97357	Description:	If foreign metadata is deleted, the URI remains in the URN2URI table.
	Workaround:	Run a SQL query to purge these URIs: <pre>delete from URN2URI where URIFormat = N'&lt;your type here&gt;'</pre>
CR96498	Description:	If you reboot a standalone K2 Media Client when using Transfer Smart Bins, the SmartBins encoders and SmartBins folders are affected.
	Workaround:	Restart the SmartBins service on the affected machines.
CR102544	Description:	If you record a new asset, the video compression or broadcast video format displayed in the K2 or News MDI might differ from the values displayed in the K2 Media Server.
	Workaround:	To confirm the video compression or broadcast video format of a new asset, verify the asset's settings as displayed in K2 AppCenter.
CR106032	Description:	If you change the case of a bin's name (for example, from "james" to "James") on a K2 system, the K2 continues to associate the bin's assets with the original name. When an asset in this bin is modified, the asset is removed from the current view.
	Workaround:	Do not change the case of a bin's name.
CR105665	Description:	In the MediaFrame Event Log, the News MDI can report an event for a non-existent object in the assetEventList.
	Workaround:	When convenient, restart the "GV News Share MDI" service.
CR106170	Description:	When configuring an MDI, using the IP address for the DSM location instead of the DSM name results in connection difficulties.
	Workaround:	Always configure MDIs with the name, not the IP address.
CR107021	Description:	Searches and other date-related operations can fail if regional settings are not set for English (United States).
	Workaround:	Configure regional settings to English (United States) for the user account (typically nbadmin) that runs the MediaFrame services.



---

CR109995	Description:	Partial File Restore (PFR) is not available on AVC-I on SGL Flashnet archive.
	Workaround:	N/A
CR109996	Description:	Partial File Restore (PFR) is not available on AVC-I or DV100 on Diva archive.
	Workaround:	N/A
CR110145	Description:	Partial file restore of LGOP assets to reverse-winking SmartBins is not supported in 7.0. Because of a timing issue, the GOP-mark correction that is necessary in this scenario may not be reliably applied before the reverse wink occurs.
	Workaround:	None
CR110252	Description:	Duration for non-drop frame clips in Aurora Browse are shown as drop frame durations.
	Workaround:	N/A
CR110614	Description:	FTP to Profile transfers fail
	Workaround:	Move the files from FTP to a K2 or K2 Summit and then transfer them to the Profile server.
CR111701	Description:	If the News, K2, or M-Series MDI loses connection with the FTP server, a job or jobs can be dropped from the queue.
	Workaround:	If the connection with the FTP server is lost, reconnect and then stop and re-start the MDI.

---