

Aurora Playout Version 7.1.1 Release Notes and Upgrade Instructions

These release notes contain the most recent information and supersede previous publications, as of August 18, 2011. Check the Grass Valley website at www.grassvalley.com/docs for an updated version that contains additional important information.

Copyright © Grass Valley, Inc. All rights reserved. Printed in the United States of America. Portions of software © 2000 – 2011, Microsoft Corporation. All rights reserved. This document may not be copied in whole or in part, or otherwise reproduced except as specifically permitted under U.S. copyright law, without the prior written consent of Grass Valley, Inc., P.O. Box 59900, Nevada City, California 95959-7900. This product may be covered by one or more U.S. and foreign patents.

Product options and specifications subject to change without notice. The information in this manual is furnished for informational use only, is subject to change without notice, and should not be construed as a commitment by Grass Valley, Inc. Grass Valley, Inc. assumes no responsibility or liability for any errors or inaccuracies that may appear in this publication.

Grass Valley, K2, Aurora, Summit, Solo, Dyno, Turbo, Profile, Profile XP, NetCentral, NewsBrowse, NewsEdit, NewsQ, NewsShare, NewsQ Pro, and Media Manager are either registered trademarks or trademarks of Grass Valley, Inc. in the United States and/or other countries. Grass Valley, Inc. products are covered by U.S. and foreign patents, issued and pending. Additional information regarding Grass Valley, Inc.'s trademarks and other proprietary rights may be found at www.grassvalley.com. Other trademarks and logos used in this document are either registered trademarks or trademarks of the manufacturers or vendors of the associated products, such as Microsoft® Windows® operating system, Windows Media® player, Internet Explorer® internet browser, and SQL Server™. QuickTime and the QuickTime logo are trademarks or registered trademarks of Apple Computer, Inc., used under license therefrom.

Contents

Grass Valley Product Support.....	3
Release Summary.....	5
What's new in version 7.1.1.....	5
Version 7.1.1.....	5
Feature limitations in this release.....	5
Changes and features in previous releases.....	6
Version 7.1.....	6
Version compatibility.....	9
System specifications.....	9
Compatible Grass Valley products.....	9
Compatible third party products.....	10
Upgrading Aurora Playout systems.....	11
Upgrading Aurora Playout devices with SiteConfig.....	11
About upgrading Aurora Playout devices with SiteConfig.....	11
Prepare for upgrade.....	11
Prepare SiteConfig for software deployment.....	12
Install prerequisite files on the SiteConfig PC.....	12
Upgrade K2 systems.....	12
Distribute devices into deployment groups.....	13
Install High Priority Windows updates (recommended).....	13
Check all currently installed software on Aurora Playout devices.....	13
Add software package to deployment group for Aurora Playout devices.....	14
Upgrade software on Aurora Playout devices.....	15
Upgrade NAS systems.....	18
Upgrade Browse and MediaFrame systems.....	18
Licensing Grass Valley products.....	19
About software licensing.....	19
Requesting a license.....	19
Adding a license.....	21
Deleting licenses.....	21
Archiving licenses.....	21
Aurora Playout licenses.....	22
New topics.....	23
About essence path.....	23
Setting General options.....	23
Setting Playback options.....	25
Disabling User Account Control on Windows 7 clients.....	26
Searching for MOS Objects within ENPS.....	26
Inserting graphics into ENPS story.....	29
Playing clips with Orad graphics.....	30
Use configured web proxy settings.....	30
User setting to disallow trimming within ALP.....	31
Additional notes.....	32
Setting up AMP control on a K2 Client.....	32
Installing Aurora Playout software manually.....	32
Installing ALP using a Configuration File.....	33
Installing ALP using a Batch File.....	35
Setting up ENPS.....	35
Known Issues.....	37

Grass Valley Product Support

To get technical assistance, check on the status of a question, or to report a new issue, contact Grass Valley Product Support via e-mail, the Web, or by phone or fax.

Web Technical Support

To access support information on the Web, visit the product support Web page on the Grass Valley Web site. You can download software or find solutions to problems.

World Wide Web: <http://www.grassvalley.com/support/>

Technical Support E-mail Address: gvgtechsupport@grassvalley.com

Grass Valley Knowledge Base: <http://grassvalley.novosolutions.net/>

In the Knowledge Base you can search by topic, search by product, or browse the Table of Contents to find Frequently Asked Questions (FAQ).

Telephone Support

Use the following information to contact Product Support by phone.

International Support Centers

Our international support centers are available 24 hours a day, 7 days a week.

Support Center	Toll free	In country
France	+800 80 80 20 20	+33 1 48 25 20 20
United States	+1 800 547 8949	+1 530 478 4148

Authorized Local Support Representative

A local support representative may be available in your country. To locate a support center during normal local business hours, refer to the following list. This list is regularly updated on the website for Grass Valley Product Support

(<http://www.grassvalley.com/support/contact/phone/>)

After-hours local phone support is also available for warranty and contract customers.

Region	Country	Telephone
Asia	China	+86 10 5883 7575
	Hong Kong, Taiwan, Korea, Macau	+852 2531 3058
	Japan	+81 3 6848 5561
	Southeast Asia - Malaysia	+603 7492 3303
	Southeast Asia - Singapore	+65 6379 1313

Region	Country	Telephone
Pacific	India	+91 22 676 10324
	Australia	1 300 721 495
	New Zealand	0800 846 676
	For callers outside Australia or New Zealand	+61 3 8540 3650
Central America, South America	All	+55 11 5509 3440
North America	North America, Mexico, Caribbean	+1 800 547 8949; +1 530 478 4148
Europe	UK, Ireland, Israel	+44 1189 230 499
	Benelux – Netherlands	+31 (0) 35 62 38 421
	Benelux – Belgium	+32 (0) 2 334 90 30
	France	+800 80 80 20 20; +33 1 48 25 20 20
	Germany, Austria, Eastern Europe	+49 6150 104 444
	Belarus, Russia, Tadjikistan, Ukraine, Uzbekistan	+7 495 258 09 20
	Northern Europe	+45 404 72 237
	Southern Europe – Italy	+39 06 87 20 35 28
	Southern Europe – Spain	+34 91 512 03 50
	Middle East, Near East, Africa	Middle East
Near East and Africa		+800 80 80 20 20; +33 1 48 25 20 20

Release Summary

What's new in version 7.1.1

This version of software includes several improvements, in addition to correcting some problems that were present in earlier releases.

Version 7.1.1

- **STRATUS support** — Aurora Payout is compatible with the STRATUS Media Workflow Application Suite. For Aurora Payout to work in the STRATUS environment, STRATUS Elite licence needs to be installed on Aurora Payout machines.
- **MOS channel update** — Aurora Payout supports the option to update the Newsroom Computer System (NRCS) of assigned payout channels. Refer to [Setting General options](#) on page 23 for more information in these release notes.
- **Essence path to NRCS** — The Aurora Payout allows FTP path of an essence clip to be reported to the NRCS. Refer to [About essence path](#) on page 23 for more information in these release notes.
- **New setting in Aurora Payout** — If the new setting **Prevent Stop Cue Delay on Post Roll** is enabled, the Stop Cue Delay period does not take effect when a clip goes into post roll mode (either by a play next or tally off-air). Refer to [Setting Playback options](#) on page 25 for more information in these release notes.
- **New column in Housekeeper** — The Clip Import tab in the Housekeeper application now has the **Created** column in the asset list; to display the creation date of the asset.
- **Removal of separate licensing for SDB and XMOS servers** — SDB and XMOS servers no longer need licenses to operate.
- **Removal of skinning** — User-interface skinning using a third-party product has been removed from the Assignment List Plugin and Housekeeper application.
- **Documentation for this release** — As a minor release, this constitutes the revision of release notes only and not the whole customer documentation set. In addition to these release notes, use the following document for this release of Aurora Payout software:
 - Aurora Payout User Guide v7.0 — 071-8516-05 — April, 2010

The document is on Aurora Payout 7.0 Software CD with part number 063-8267-10 or you can also search for the document at <http://www.grassvalley.com/docs>.

Feature limitations in this release

- For Aurora Payout to work with Windows 7, you need to disable the User Account Control in your machine. Refer to [Disabling User Account Control on Windows 7 clients](#) on page 26 for more information in these release notes.
- It is not possible for STRATUS Control Panel running on Windows Server 2008 or Windows 7 machine to remotely write into the registry of SDB or XMOS machine running on Windows XP. This is due to a Microsoft .NET Framework 4 limitation. So, users with SDB and XMOS running on Windows XP machines need to configure their SDB and XMOS servers manually.
- For STRATUS Control Panel to successfully configure SDB and XMOS servers, the same administrator login account need to exist on STRATUS Control Panel machine and SDB / XMOS machines.

- Windows 2000 that was supported in previous versions of Aurora Playout software is no longer supported.

Changes and features in previous releases

The following sections describe changes and features in past releases.

Version 7.1

- **Windows 7 support** — Aurora Playout supports the Windows 7 operating system for 32-bit and 64-bit versions.
- **Documentation for this release** — In addition to these release notes, use the following document for this release of Aurora Playout software:
 - Aurora Playout User Guide v7.0 — 071-8516-05 — April, 2010

The document is on Aurora Playout 7.0 Software CD with part number 063-8267-10 or you can also search for the document at <http://www.grassvalley.com/docs>.

Version 7.0

- **New Look** — The look and feel of the Aurora Playout has been changed to match the rest of the Grass Valley product lines.
- **New terminology** — The MediaFrame server will now be referred to as K2 BaseCamp. (The scaled-down version of the Aurora Browse/MediaFrame system is still referred to as K2 BaseCamp Express.)
- **Enhanced MOS Workflow** — With this workflow, assets will be embedded with MOS Object IDs and seen as MOS objects throughout ENPS. Therefore, a search in ENPS can easily get the script, rundown and video assets. In addition to the ability to attach these video elements to scripts on ENPS, users can also display a list of current MOS Object IDs for raw feeds in the Assignment List Plug-in. So, journalists and editors now have a direct search link between wire information within ENPS and video assets within Grass Valley. Refer to [Searching for MOS Objects within ENPS](#) on page 26 for more information in these release notes.
- **Graphics Trigger Workflow** — Aurora Playout has graphics workflow through an interface to the Orad graphics playout engine, Maestro. With this workflow, graphics can be inserted as MOS objects into ENPS stories via the Orad plug-in. Then, editors can place MOS-driven graphic elements on the Aurora Edit timeline and transfer graphic timing information directly to Aurora Playout. As the story is played to air, Aurora Playout can frame-accurately trigger the Orad graphics server for direct play-to-air as well. Refer to [Inserting graphics into ENPS story](#) on page 29 for more information in these release notes.
- **Multi-Tiered Bins in K2 Summit** — Aurora Playout supports the ability to configure playout destinations into K2 Summit's multi-level bin hierarchy feature. The configuration needs to be set up within the SDB Server component.
- **Use Configured Web Proxy Settings** — You can set MediaFrame to use proxy settings configured in your web browser to communicate with MediaFrame services. For example, the proxy configured in Internet Explorer under Tools > Options > Connections > LAN Settings > Proxy Server. Refer to [Use configured web proxy settings](#) on page 30 for more information in these release notes.

- **User Setting to Disallow Trimming within ALP** — When launched under Administrator control, the operator has the option of disabling trim capabilities. Refer to [User setting to disallow trimming within ALP](#) on page 31 for more information in these release notes.

Version 6.5.2

- **SiteConfig support** — Network configuration and software deployment across all Aurora products is supported by SiteConfig, Grass Valley's system management tool.
- **Script Preview in Final Cut Pro** — Scripts created through GV supported NCS systems are now available for preview within a FireFox web browser on Final Cut Pro.
- **Copy Clip ID in ALP** — A new item within the right click menu of ALP, allows the copying of the Clip ID and can then be pasted into alternative locations for use in file names and metadata entry.
- **Administrator password** – The default administrator account on Aurora devices has credentials as follows:
 - Username: administrator
 - Password: adminGV!

SiteConfig expects these credentials by default.

- **Documentation for this release** — The following manual is new:
 - SiteConfig Migration Instructions 071-8705-00

The manual is on Aurora Playout Software CD part number 063-8267-09.

Version 6.5.1.62

- **K2 Summit compatible** – The Aurora suite of software, including Aurora Playout, is compatible with the K2 Summit software.

Version 6.5

- **MediaFrame in the Assignment List Plug-in** — A MediaFrame tab has been added to the ALP in order to allow search, preview, and highlight capabilities.
- **Preview Finished Stories in ALP, Playlist, and ALM** — The Assignment List Plug-in, Aurora Playout Playlist, and Assignment List Manager all have the ability to preview low-resolution assets that have been published as finished stories through the news workflow.
- **MediaFrame in Housekeeper** — MediaFrame in Housekeeper allows users to search a K2 MDI, preview assets, and drag and drop assets to empty placeholders within the clip import tab.
NOTE: For MediaFrame connectivity to function between the ALP, Housekeeper, and the Aurora Playout applications that are on a different domain than the MediaFrame server, there must be a defined one-way trust relationship between these systems and the MediaFrame Server.
- **System Information Utility** — The Help->About box now includes a System Information Utility.
- **Recue Option Change** — There is now an option to prevent auto recue above the last played item in the rundown.
- **Cue All with X-Keys** — X-Keys configuration now has an option to set Cue All to a button on the panel.

- **Prevent Cue All from Ejecting Playing Items** — The Cue and Chain tab of Tools/Options now allows users to prevent cue all from ejecting playing items.
- **Delete Button in ALP and ALM** — Users can now delete placeholders from the ALP and ALM.
- **Assign Stories to Channels not in Rotation** — Users can now assign stories to channels that are not included in the regular channel rotation, even from NRCS.

Older versions

For information about older software versions not listed in these release notes, refer to the release notes for those versions.

Version compatibility

Versions qualified for compatibility with this release of software are summarized in the following sections.

System specifications

This section describes the hardware requirements that customers should use when purchasing equipment for this release. The minimum spec describes the bare minimum requirement for running Aurora, which may reduce the quality of user experience, depending on the task. The expected lifespan of minimum spec equipment is also less than that of recommended spec equipment, since it lacks head room for future growth.

NOTE: *Minimum specs for SD configurations are provided only for existing SD customers upgrading to this release. New customers should use HD configurations.*

Aurora Playout

	MINIMUM Spec	RECOMMENDED Spec
Processor	Intel Core 2 Dual Core 2.3 GHz	Intel Core 2 Dual Core 2.3 GHz
Memory	1 GB (for 32 bit OS) 2 GB (for 64 bit OS)	2 GB (for 32 bit OS) 3 GB (for 64 bit OS)
Graphics	Integrated or discrete graphics with 128 MB of memory and support for Direct3D 9 and Shader Model 3.0	Discrete graphics with 128 MB of dedicated memory and support for Direct3D 9 and Shader Model 3.0
System Drive	80 GB 7200 RPM SATA	80 GB 7200 RPM SATA
Optical Drive	CD/DVD	CD/DVD
Network	Gigabit Ethernet (2)	Gigabit Ethernet (2)
OS	Windows XP Pro 32 SP3, Windows 7 Pro or Ultimate 32 or 64	Windows 7 Pro or Ultimate 32 or 64
Notes	It is the customer's responsibility to ensure that the system has sufficient number and type of expansion slots to meet the intended use. Playout requires one free PCI slot for each Control 422 and Sealevel GPIO board.	

Compatible Grass Valley products

Grass Valley products are compatible with this release of software as follows:

Product	Version	Comments
Aurora Browse client	7.1.1.2	—

Version compatibility

Product	Version	Comments
Aurora Browse MediaFrame Server	7.1.1.8	With Windows Server 2003 SQL Server 2005 SP3
Aurora Proxy Encoder	7.1.1.3	—
Aurora Edit	7.1.1.322	With compatible version of SQL
Aurora Ingest	7.1.1.93	With compatible version of SQL
Generic iSCSI Installer	3.3.2.1401 or 7.4.2.x	—
GVG_MLib Installer	3.3.2.1401 or 7.4.2.x	—
K2 system software	3.3.2.1401 for K2 Media Client 7.4.2.x for K2 Summit Production Client	With compatible version of SNFS
STRATUS application	1.0	—
SiteConfig application	1.4.0.460 or higher	—
Grass Valley prerequisite files	1.0.0	The prerequisite file must be installed on the SiteConfig control point PC.

Compatible third party products

Products by manufacturers other than Grass Valley are compatible with this release of software as follows:

Product	Version	Comments
ENPS	6.00.0048	
iNEWS Client	3.3.0.173	
iNEWS Server	3.3.0.173	
iNEWS MOS Gateway	3.0.0.47	
Microsoft Windows	XP with Service Pack 3, Windows 7 SP1	Windows 7 supported on Playout clients
Octopus	6.0.5.6054	
Orad (Maestro On-Air-Graphics System)	5.0.0.1564	

Upgrading Aurora Playout systems

This section contains the tasks necessary for the upgrade to this release of software.

Upgrading Aurora Playout devices with SiteConfig

This section contains the tasks for using SiteConfig to upgrade to this release of software. Work through the tasks sequentially to complete the upgrade.

NOTE: *These upgrade instructions assume that current software is at version 6.5.0 or higher. If you have a lower version of software, contact Grass Valley Support before upgrading.*

About upgrading Aurora Playout devices with SiteConfig

With the upgrade instructions in this document, you use SiteConfig from a network connected control point PC and remotely upgrade software simultaneously on your Aurora product devices. This is the recommended process for software upgrades.

NOTE: *Do not use the upgrade instructions in this document if upgrading with SiteConfig for the first time.*

If SiteConfig was not used for your previous software upgrade, do not use the upgrade instructions in these release notes. Instead, use the *SiteConfig Migration Instructions*. Before you upgrade software using SiteConfig, each of your Aurora product devices must be migrated to become a SiteConfig managed device. This includes installing SiteConfig support on the device, manually uninstalling any and all Aurora components, and qualifying the device for communication with SiteConfig. These instructions are in the *SiteConfig Migration Instructions*. Also refer to the *SiteConfig User Manual* or *SiteConfig Help Topics*.

The upgrade instructions in this document apply to the following device:

- Aurora Playout Platform

To upgrade software using SiteConfig, you must first have SiteConfig set up for system management and software deployment in your facility. These upgrade instructions assume that you have already done that for your K2 SAN. Then you add your Aurora product devices to the SiteConfig system description that you are using for your K2 SAN.

NOTE: *Do not attempt to upgrade software incrementally across the devices of a K2 SAN while media access is underway. Online software upgrading is not supported.*

The following installation tasks provide information specifically for the upgrade to this version of software. Read the information in these sections carefully before attempting any upgrade to software.

Prepare for upgrade

Before upgrading, do the following:

- Procure the software installation files for this release via the appropriate distribution method, such as download, CD-ROM, network drive, or external drive.
- Start up the devices you are upgrading, if they are not already started.
- Stop all media access on the devices you are upgrading.
- Shut down all applications on the devices you are upgrading.

Prepare SiteConfig for software deployment

Do the following to prepare SiteConfig for the software upgrade.

1. Make the following files accessible to the SiteConfig control point PC:
 - Aurora Playout software installation (*.cab) file
 - PCmonitoring software installation (*.cab) file
2. If a newer version of SiteConfig is available for upgrade and you have not yet upgraded SiteConfig, do the following:
 - a) From Windows Add/Remove programs, uninstall the current version of SiteConfig from the control point PC.
 - b) Install the new version of SiteConfig on the control point PC.
3. If not already present in the SiteConfig system description, configure deployment groups as follows:
 - A deployment group that contains your Aurora Playout devices.

Install prerequisite files on the SiteConfig PC

Some software components share common prerequisite software. You must install a prerequisite software package on the SiteConfig PC to make the prerequisite software available for software deployment to devices.

1. Check release notes for the required version of prerequisite files, if any.
2. On the SiteConfig PC, open Windows Add/Remove programs and look for **Grass Valley Prerequisite Files**, then proceed as follows:
 - If the required version of prerequisite files is installed, do not proceed with this task.
 - If prerequisite files are not installed or are not at the required version, proceed with this task.
3. Procure the required prerequisite software installation file. The file name is *Prerequisite Files.msi*.
4. On the SiteConfig PC, run the installation file. The installation program copies prerequisite files to *C:\Program Files\Grass Valley\Prerequisite Files*.

Upgrade K2 systems

Prerequisites for this task are as follows:

- If upgrading a K2 SAN, all SAN clients must be offline (all media access stopped) or shut down. Depending on your system design, this could include devices such as K2 clients, K2 appliances, Aurora Proxy (Advanced) Encoders, MDI server, Aurora Edit clients, Aurora Ingest clients, Aurora Playout clients, and generic clients.

Upgrade your K2 systems to the compatible version of K2 system software. This includes K2 SAN systems and stand-alone K2 Media Client and K2 Summit Production Client systems. Refer to *K2 Release Notes* for procedures.

Distribute devices into deployment groups

You can gather devices of different types into a SiteConfig deployment group. This allows you to deploy software to all the devices in the deployment group at the same time, as part of the same deployment session. Based on the roles you have assigned to the devices, SiteConfig deploys the proper software to each device. This increases the efficiency of your software deployment with SiteConfig.

If you have not already done so, configure your deployment groups. The recommended deployment group distribution is as follows. Depending on your system design, your system might not have all the device types listed.

- In a deployment group named "Aurora_Edit_Ingest_Playout", place the following devices:
 - Aurora Edit workstation of any storage options: Shared storage, NAS storage, and stand-alone.
 - Aurora Edit LD computer
 - DSM
 - Conform Server
 - SmartBin Server
 - FTP Server
 - Aurora Ingest Platform
 - IEP
 - Aurora Playout Platform
- In a deployment group named "Aurora_Browse_MediaFrame", place the following devices:
 - MediaFrame server
 - MDI server
 - Aurora Proxy Encoder
 - K2 Basecamp Express
- If you have a K2 Nearline SAN (NAS), in a deployment group named for the SAN system, place the following devices:
 - The Nearline SAN's K2 Media Servers.

Install High Priority Windows updates (recommended)

- Windows “High Priority” updates are recommended, but not required. While you have devices in an offline state to upgrade software, you should check to see if there are any new updates that you need to install. Use standard Windows procedures.

⚠ CAUTION: Only “High Priority Updates” should be installed. Do not install other Windows or driver updates unless specifically directed by product documentation or by Grass Valley Support.

Check all currently installed software on Aurora Playout devices

Prerequisites for this task are as follow:

- The device is assigned in the SiteConfig system description and network connectivity is present.

- SiteConfig is able to log in to the device using the username/password credentials assigned to the device.
- The SiteConfig PC does not have a network drive mapped to an administrative share (such as C\$) on a device on which you are checking software.
- If Aurora product software at a version lower than 6.5.2 is currently installed, it must be manually uninstalled. For more information refer to *SiteConfig Migration Instructions*.

Do the following steps on the device that you are upgrading.

1. In the **Software Deployment | Deployment Groups** tree view, right-click the top-most node for the group or any individual device and select **Check Software**.

NOTE: *If you have access problems, verify that the administrator account on the device has credentials as currently configured in SiteConfig.*

The Check Software dialog box appears. SiteConfig searches for software on the selected device or devices and gathers information. Progress is reported.

2. When the check is complete, close the Check Software dialog box.

An updated list of all currently installed software is displayed in the **Software Deployment | Devices | Installed Software** list view. If software is a SiteConfig managed software package, information is displayed in the Managed Package and Deployment Group columns.

Add software package to deployment group for Aurora Playout devices

Prerequisites for this task are as follows:

- You can access the software package file from the SiteConfig control point PC.
- The devices to which you are deploying software are in a deployment group.

Use the following procedure to add one or more software packages to the deployment group that contains your Aurora Playout devices. For this release of software, identify and add software installation files as follows:

Software	File name
Aurora Playout software	<i>AuroraPlayout_7.1.1.xx.cab</i>
Grass Valley Windows Monitoring SNMP agent	<i>PCMonitoring_x.x.x.xx.cab</i>

1. In the **Software Deployment | Deployment Groups** tree view, select a deployment group.
2. Click the **Add** button.
The Add Package(s) dialog box opens.
3. Do one of the following to select the software package:
 - Select from the list of packages then click **OK**.
 - Click **Browse**, browse to and select the package, then click **Open**.
4. If one or more EULAs are displayed, accept them to proceed. If you do not accept a EULA, the associated software is not assigned to the deployment group.
SiteConfig adds the package to the deployment group.

The package appears in the Managed Packages list for the selected deployment group. SiteConfig creates new software deployment tasks for the package and displays them in the Tasks list view.

Upgrade software on Aurora Playout devices

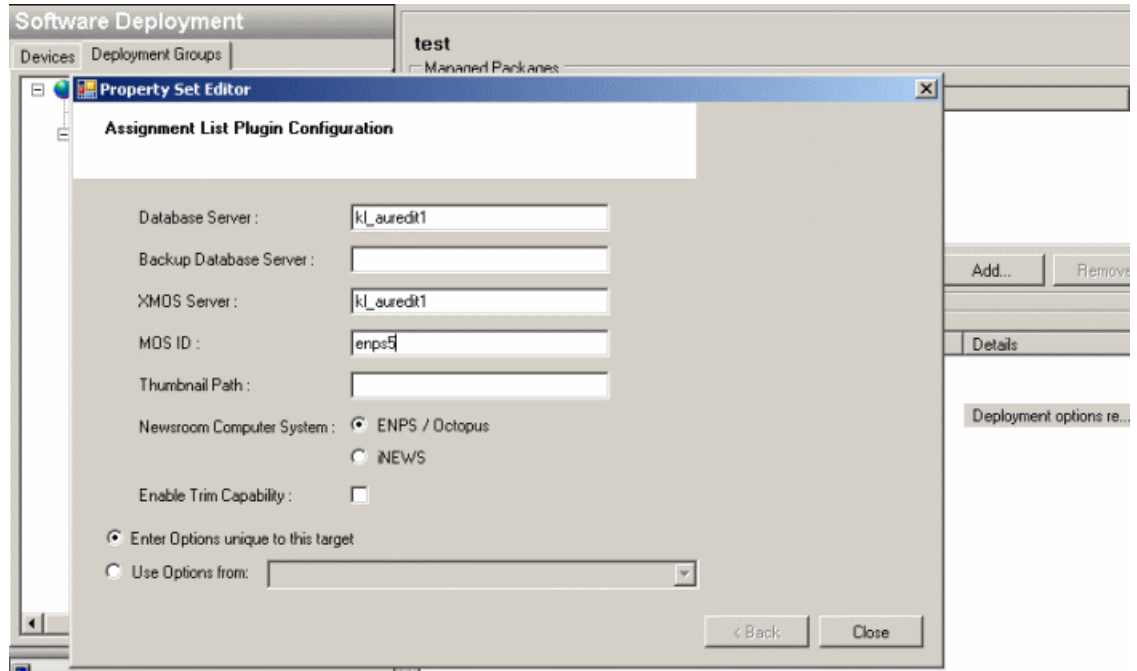
Prerequisites for this task are as follows:

- The devices that you are upgrading are in a deployment group.
- For the software you are upgrading, you have added a newer version of that managed software package to the deployment group.
- Prerequisite files are installed on the control point PC.
- You have recently done the SiteConfig "Check Software" operation on the devices you are upgrading.

If you are upgrading multiple software components for which there is a required sequence, you must check and uncheck tasks and run multiple deployment sessions to control the sequence. For some software components, SiteConfig aids you by enforcing dependencies. For each individual software component, SiteConfig enforces an uninstall of the current version of software before installing the upgrade version. SiteConfig provides uninstall deployment tasks and install deployment tasks to indicate the taskflow. SiteConfig can do the uninstall/install in a single deployment session.

1. In the **Software Deployment | Deployment Groups** tree view, select the device or the group of devices to which you are deploying software.
The corresponding software deployment tasks are displayed in the Tasks list view.
2. For the software you are deploying, select the **Deploy** check box in the row for the uninstall task.

- For the software you are installing, select the **Deploy** check box in the row for the install task.
 If you have the Assignment List Plugin role assigned to a payout device, then you will have to set deployment options. The **Details** column will indicate **Deployment options required**.
 Click the **Deployment options required** link and a wizard page appears.



Key-in the Database Server, XMOS Server, MOS ID and select the appropriate Newsroom Computer System in your operation. Then, click **Close**.

For upgrading Aurora Payout to this release, deploy the following tasks:

Deploy	Managed Package	Action
✓	AuroraPayout xxxx.xxxx	Uninstall
✓	AuroraPayout 7.1.1.xx	Install
✓	PCmonitoring x.x.x.xx	Install

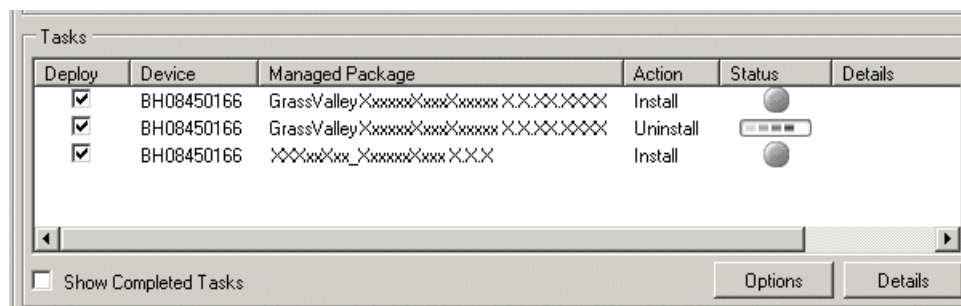
NOTE: *If there are dependencies, SiteConfig can enforce that some tasks be deployed together.*

4. Check the area next to the Start Deployment button for a message.



If a message instructs you to upgrade the Discovery Agent, on the control point PC go to the directory to which SiteConfig is installed, find the *DiscoveryAgent_x.x.x.x.cab* file, add it to the deployment group, and deploy the Discovery Agent software as well.

5. Click the **Start Deployment** button.



Deployment tasks run and software is uninstalled. Progress is reported and next steps are indicated in both the Status and Details columns. If an error appears regarding prerequisite software, install the prerequisite files on the control point PC and then repeat this step.

6. When the Status or Details columns indicate next steps, identify the software in the row, then do one of the following:
 - For K2 software, when Details displays a **Restart required** link (but not "Visible dialog pending..."), click the link and when prompted "...are you sure...", click **Yes**.

The device restarts. This restart is required by the Aurora Playout software uninstall.

Deployment tasks run and software is installed. Progress is reported and next steps are indicated in both the Status and Details columns.

7. When the Status or Details columns indicate next steps, identify the software in the row, then do one of the following:
 - For K2 software, when Details displays a **Restart required** link (but not "Visible dialog pending..."), click the link and when prompted "...are you sure...", click **Yes**.

The device restarts.

8. Monitor progress as indicated by both the Status and Details column. When finished, the Status column indicates complete.

Upgrade NAS systems

Prerequisites for this task are as follows:

- K2 systems are upgraded to the compatible version of K2 system software.
- Aurora Edit, Ingest, and Playout systems are upgraded to the compatible versions of software.

Upgrade the MediaFrame Proxy NAS (K2 Nearline SAN) to the compatible version of K2 software. Use SiteConfig and deploy software, using steps similar to those for other systems.

- a) Check software on the Nearline SAN's K2 Media Servers.
- b) Add software *.cab file to the deployment group that contains the K2 Media Servers.
- c) Upgrade software on K2 Media Servers via a SiteConfig deployment session.

Upgrade Browse and MediaFrame systems

Prerequisites for this task are as follows:

- K2 systems are upgraded to the compatible version of K2 system software.
- Aurora Edit, Ingest, and Playout systems are upgraded to the compatible versions of software.
- K2 Nearline SAN (NAS) systems are upgraded to the compatible version of K2 system software.

Upgrade your Browse and MediaFrame systems to the compatible versions of software. Refer to *Aurora Browse Release Notes* for procedures.

Licensing Grass Valley products

The following sections contain instructions for managing Grass Valley product licenses.

About software licensing

Once you have installed Aurora Payout, you are provided with a 30-day demo license. You need to get a license number from Grass Valley in order to install the permanent license. Obtaining the software license number is important because you cannot launch channels or configure Aurora Payout after your 30-day demo license has expired.

If you want to use Aurora Payout with the STRATUS Media Workflow Application Suite, you also need to install STRATUS Elite license on your Aurora Payout machines.

Licenses are requested through the License Wizard and managed through the SabreTooth License Manager, which is installed on the Grass Valley product with the Grass Valley software. The License Wizard and SabreTooth License Manager must be located on the Grass Valley product.

License information is stored in XML files that you can manage just like any other file on your system. Node-locked licenses are unique to the system for which they are requested and cannot be used on any other machine. A floating license can be used on multiple machines, one at a time. You should back up the license text files to a separate drive or as part of a recovery image.

Licenses are based on your system's unique identifier, which is partially derived from your system's Media Access Control (MAC) address. If you change your system's MAC address by performing operations such as changing the System Processor card, you must obtain a new license based on the new MAC address.

Requesting a license

This topic applies to Grass Valley Sabretooth licenses. For the system you are licensing, you must provide a generated unique ID to Grass Valley. Grass Valley uses the ID to create your unique license.

1. Log on to the device that you want to license.

You must log in as a Windows administrator with a local account, not a domain account.

2. Open the License Request Wizard.

Find the License Request Wizard shortcut on the Windows desktop.

The License Request Wizard displays.

3. Read the on-screen instructions, then click **Next**.

The Customer dialog box displays.

4. Enter the information requested on this page then click **Next**.

You must provide a valid email address to receive your license file.

The Sales Number dialog box displays.

5. Enter the Sales Order Number in the field then click **Next**.

Typically the Sales Order Number is found on the Software License sheet that you received with your Grass Valley product.

The Summary dialog box displays.

6. Review the License Request information and click **Finish**.

A License Request text file, *License_Request_<SalesNumber>.txt*, is generated and saved to the Windows Desktop.

NOTE: *If you are requesting licenses for more than one application, be sure to modify the name of the first License Request text file before saving it to your desktop. (In Notepad, use the Save As command.) Otherwise, the second License Request text file will overwrite it.*

7. If you have K2 Summit Production Client or K2 Solo Media Server and if the write filter is currently enabled, be aware that files on the desktop are lost on restart. Therefore do one of the following:
 - Save the License Request text file(s) to a different location.
 - Keep the K2 system running (do not restart) until after you have requested the license(s).
8. Do one of the following:
 - Attach the License Request text file to an email.
 - Paste the text directly into an email message.

You might want to keep a copy of the message for your records.

9. Send the email as instructed by the License Request Wizard.

An email will be sent from Grass Valley to the return email address you specified; your SabreTooth software license will be provided as a text file.

10. Save this email in case you ever need to re-image this machine.

Next add the license to the SabreTooth License Manager.

If you encounter difficulties when requesting a license

If you encounter difficulties running the License wizard, or the License wizard is not available, try this alternate method:

1. Generate a unique ID of the device where you will install software, as follows:
 - a) Click on the License Manager icon on the Windows Desktop.

The SabreTooth License Manager opens.
 - b) Choose **File | Generate Unique Id** the License Manager.
 - c) Click **Copy to clipboard** to copy the generated ID, and **OK** to exit.
2. Prepare an email that includes the following information:
 - Customer Name
 - Customer Email
 - Sales Order Number
 - Unique ID of the device where you will install software.

3. Send the email to AuroraLicenses@grassvalley.com.

The SabreTooth license number will be emailed to the email address you specified.

Adding a license

Your software license, *Licenses_<SalesNumber>.txt*, is provided as a text file. Use the License Manager to add this file to your system and enable the desired feature.

1. Click on the License Manager icon on the Windows Desktop.

The SabreTooth License Manager opens.

2. Do one of the following:

- Choose **File | Import License** and navigate to the file location to open the text file.
- Drag and drop the text file onto the License Manager.

You will now see the permanent license in SabreTooth, as well as any other licenses, permanent or temporary, that have been installed on this machine.

Once you have added the permanent license, you can delete the temporary license. If the temporary license is still in SabreTooth you will continue to get temporary license notifications, even with the permanent license installed, unless you delete the temporary license.

You should archive the permanent license to a backup system.

Deleting licenses

Deleting a license disables the feature that it enabled. You might want to delete a temporary license prior to its expiry if you have decided not to purchase the feature. You can delete a temporary license after the permanent license has been installed without disabling the licensed product.

1. Select the license in the SabreTooth License Manager.
2. Use the Delete key on your keyboard or right click with your mouse and select **Delete**.

Archiving licenses

You can archive your licenses to a secure external location. This allows you to quickly re-install a license should it be deleted or should you have to downgrade and then re-license the software. You can archive multiple licenses at the same time.

NOTE: *If you downgrade to an earlier version of the licensed software, make sure to archive the licenses first.*

1. In the SabreTooth License Manager, select the license or licenses.
2. Choose **File | Export License** to open the Save As dialog box.
3. Assign a meaningful name to the file, and save it to the desired location. Grass Valley recommends saving the license file to a USB drive or other external location.

Aurora Payout licenses

The Grass Valley licenses available at the time of this writing that can be installed on Aurora Payout are as follows. Contact your Grass Valley representative for more information about licenses.

Aurora Payout licenses

License	License type
Aurora Payout	SabreTooth
Aurora GFX	SabreTooth
STRATUS Elite	SabreTooth

New topics

This section contains new or modified topics associated with this release of software.

About essence path

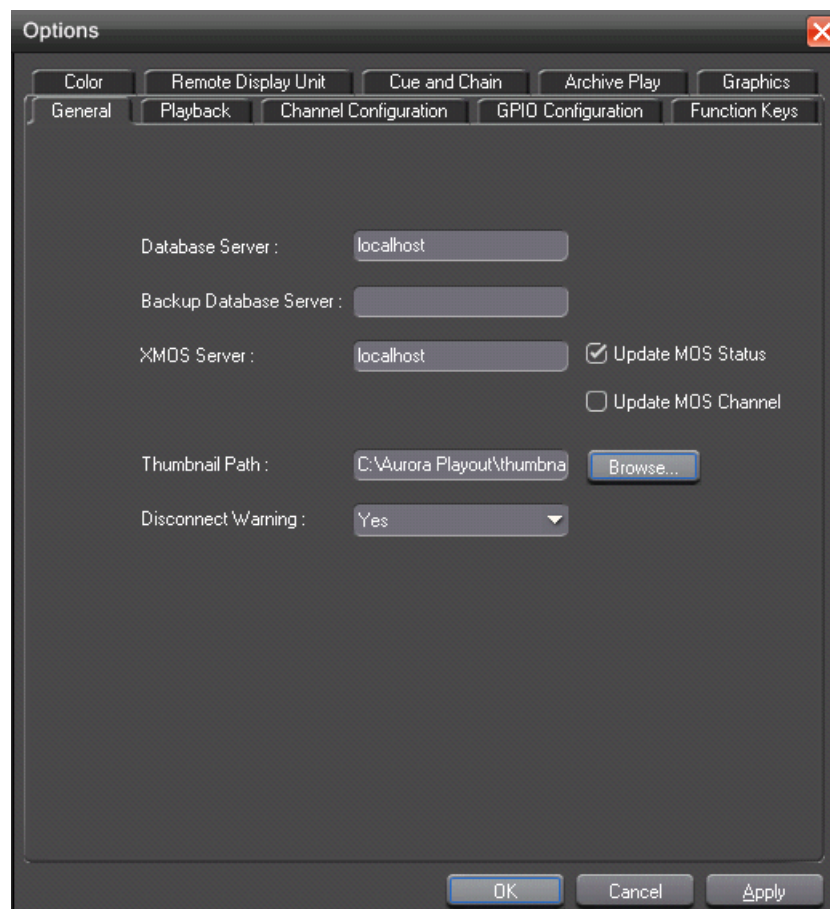
Aurora Playout allows FTP path of an essence clip to be reported to the Newsroom Computer System.

This feature can be turned on by configuring the *EssenceTechDesc* registry setting in *HKLM\Software\Grass Valley\Aurora Playout\XMOS Server*.

For SDB and XMOS servers that are not configured through the STRATUS Control Panel, the *FTPHost* registry setting in *HKLM\Software\Grass Valley\Aurora Playout\DB Server\MediaServer\[x]* needs to be changed manually on both the primary and hot standby SDB Server systems.

The FTP username should be **movie** for GXF transfer and **mxfmovie** for MXF transfer.

Setting General options



Setting	Options	Description
Database Server		Enter the name of the computer hosting the primary SDB Server.
Backup Database Server		Enter the name of the computer hosting the hot-standby SDB Server.
XMOS Server		Enter the name of the computer hosting the XMOS Server.
Update MOS Status		By default, the Update MOS Status checkbox is selected. When you have two or more Playout systems running, uncheck the box on the backup system to avoid MOS status conflicts when the same rundown is loaded by more than one Playout system.
Update MOS Channel		When the checkbox is selected, it enables channel assignments in Aurora Playout to be updated to the Newsroom Computer System.
Thumbnail Path		Enter the full path to the shared thumbnail directory on the computer where thumbnails are stored, in the format <code>\\server\foldername</code> ; e.g., if you have a shared folder named “thumbnails” on your playout system named “Playout1”, the path would be <code>\\Playout1\thumbnails</code> . This path needs to match the path set in Aurora Edit—Tools Options Aurora Playout Thumbnails Path.
Disconnect Warning	Yes; No	Select Yes to be alerted before Aurora Playout disconnects the synchronization with the Newsroom Computer System.

Setting Playback options



Setting	Option	Description
Channel Assignment	Soft	When a rundown is loaded, Playout does not assign channels to stories; clips will be cued to the first available channel.
	Hard	When a rundown is loaded, Playout assigns channels to all stories without a current channel assignment and maintains that assignment regardless of the available channels.
Space Bar Play	Enabled	Enables or disables use of the space bar to play the next cued clip.
	Disabled	
Counter Mode	Count Down	Sets the clip duration counter to count time down from the clip duration to zero, or from zero up to the clip duration.
	Count Up	
Counter Display	HH:MM:SS:FF	Determines how the counter is displayed.
	MM:SS	
Stop Cue Delay		Determines the amount of time to freeze a clip on its last frame before cueing the next clip on that channel.

Setting	Option	Description
Post Roll Stop		When a channel is playing and Play Next is pressed, determines the amount of time that the clip continues to post roll before cueing the next clip to that channel.
Out Cue Preview		Previews the last few seconds of the clip and immediately recues. (The number of seconds that previews is determined by your studio's needs.)
Minimum On-Air		Determines the minimum time that the On-Air GPI trigger must be on before releasing it will send the clip into post-roll and cue the next clip.
End Blip 1 and 2		Determines the amount of time prior to the end of a clip to display an audio/visual warning.
End Blip Stay On		Determines whether the End Blip visual signal remains on once triggered, or just flashes momentarily.
Prevent Pause within X Seconds of Play		Determines whether stop commands (through GPI input or mouse click) can occur within a determined period of time after the playing of a clip begins.
Prevent Stop Cue Delay on Post Roll		Determines whether there should be a Stop Cue Delay duration when a clip goes into post roll mode by a play next command or tally off-air.

Disabling User Account Control on Windows 7 clients

You need to disable the User Account Control on Windows 7 in order to configure **Tools | Options** settings in Aurora Playout.

1. Go to **Start | Control Panel | User Accounts**.
2. Click on the **Change User Account Control settings** link.
3. Drag the slider bar to the lowest value that shows **Never notify**.
4. Click **OK**.
5. Restart your computer for the change to take effect.

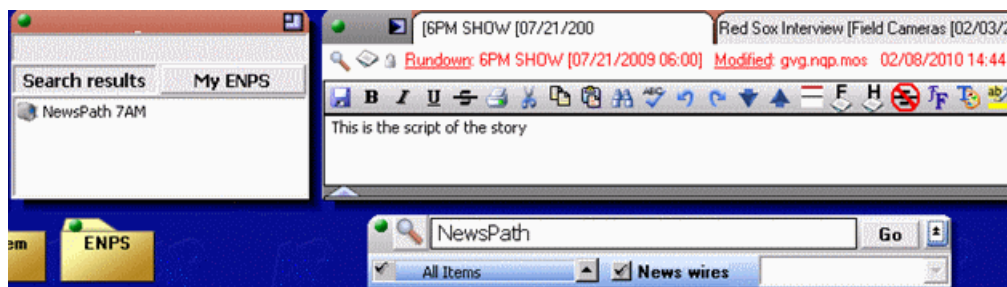
Searching for MOS Objects within ENPS

When you add a feed to the system, Aurora Playout immediately makes it a searchable MOS object within ENPS. You can then find the Grass Valley feed with an ENPS search.

1. Set the search filter in ENPS to include Grass Valley video elements.
2. Enter keywords to be searched in the search box.

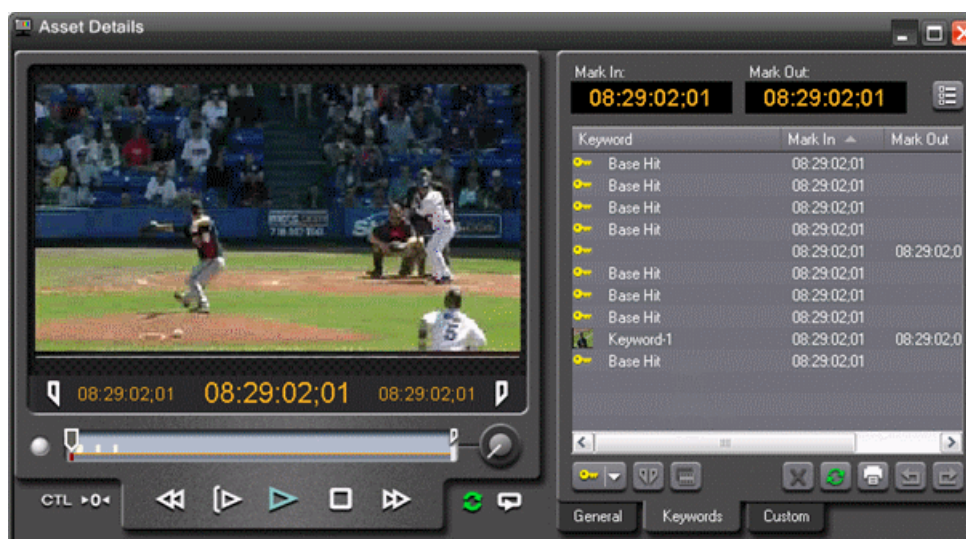
3. Click **Go**.

Search results display.



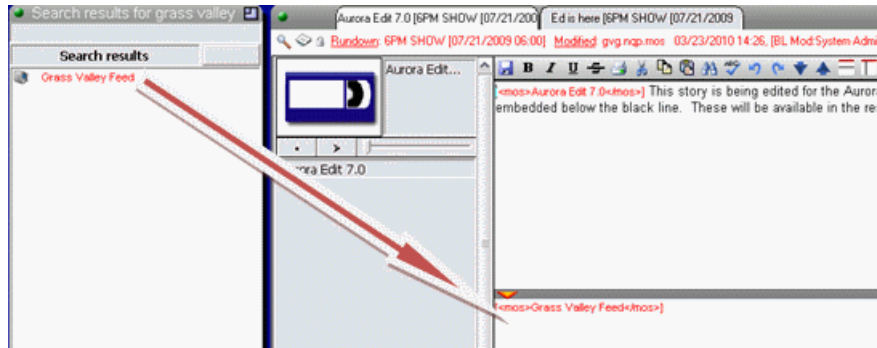
4. Double-click the video feed.

A proxy preview window launches.



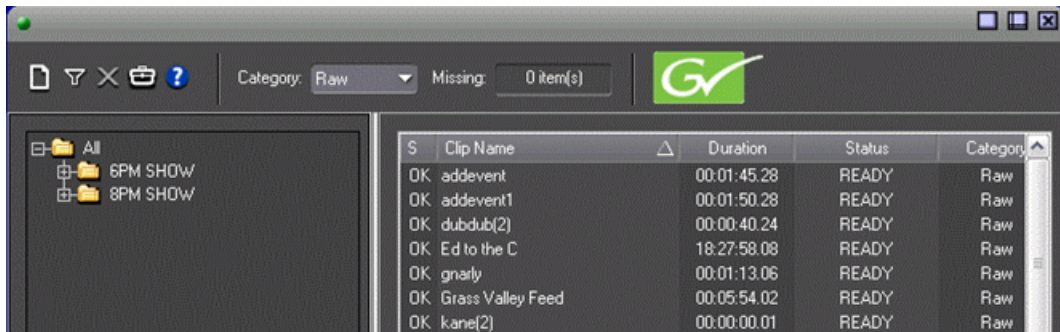
Access metadata and keyword notations as desired.

5. Find your feed, then drag and drop the video element "below the black line" of the script within ENPS.



This is a "scratch pad" area that does not impact the text of the story. It merely represents a repository for non-essential items outside of the typical rundown management.

In addition to conducting a search through the ENPS user interface, the Assignment List Plug-in (ALP) may be configured to display a list of all of the current MOS Object IDs for raw feeds in the system. A 'Raw' category must reside within the SDB Server in order to allow journalists to see this in the ALP. Video elements within the 'Raw' category may then be previewed and inserted into scripts via drag and drop.



When media that was tagged with a MOS Object ID is archived and the hi-res media is subsequently removed from the K2 system, the MOS Object ID is deleted. If the story was linked to a script, however, the MOS reference within the script remains intact, thus allowing for searches even after the media is gone.

The journalist double-clicks the remaining MOS link and the Grass Valley preview window launches to display the proxy of the offline media. This media can be linked to a new script, which allows journalists to present offline feed and previously finished story video to the editors.



Inserting graphics into ENPS story

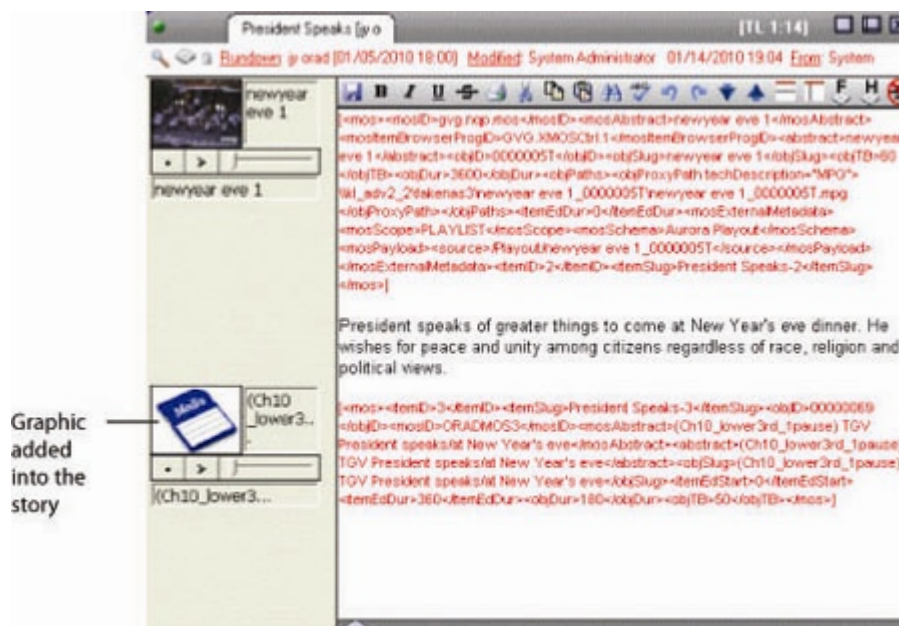
Graphics can be inserted as MOS objects into ENPS stories via the Orad plug-in. Within the plug-in, you can call up existing graphics, modify templates, preview graphics, and insert graphic elements into stories.

1. Create a new rundown or open an existing rundown in ENPS.
2. Create a new story in the rundown and prepare the script.
3. Select the related clip to your story in the Aurora Playout Assignment List Plug-in.
4. Drag the placeholder from the Assignment List Plug-in to the ENPS Editing Window.
5. Launch the Orad plug-in and select the appropriate graphic template.



6. Key-in texts related to your story into the template.
7. Click the **Save item** button to save the graphic into your story.

The graphic is added as a MOS object within your story in the ENPS.


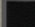



If needed, you can also insert multiple graphics into your story.

Playing clips with Orad graphics

Aurora Playout supports graphics workflow through an interface to the Orad graphics playout engine, Maestro. Editors can place MOS-driven graphic elements on an Aurora Edit timeline and then transfer graphic timing information directly to Aurora Playout.

On the Aurora Playout playlist, graphic ID can be seen in the Graphics column so operators can look at a glance to see which story includes graphics.

Thumb	Clip Name	ID	Duration	Hi Time	Status	Channel	Assign	Page	Story Slug	Description	Graphics
	2010oradstory	00000074	00:00:30:00		Ready				2010oradstory		00000062
	2010orad	00000073	00:00:07:05		Ready				2010orad		00000061
	today's news	00000063	00:07:30:00		Ready				jyorad1		

To play a clip:

- If not already cued, cue the clip to the desired channel. To cue a clip, drag and drop it into a channel window.

Clips with Orad graphics contain timing information that will be retrieved by Aurora Playout.

- Click the **Play** button  in the channel window.

As the story airs, Aurora Playout triggers these frame accurate graphic elements through the graphics device for play-to-air.

If you have multiple graphics in your story, each time that a graphic is triggered and subsequently removed; the graphics column updates the number of graphics sequence in "n of n" value and displays the graphic ID of the currently playing graphic.

For Orad events, a second play command will automatically be sent via Aurora Playout for graphics that have an animated out. This trigger will begin the exit sequence for the graphic so that it can be removed at the out point of the timeline, which has been specified by the editor.

Use configured web proxy settings

A new setting to bypass the configured web proxy has been added to each application within the Aurora Suite. This checkbox pertains to environments that have MediaFrame enabled.

For Aurora Playout, the checkbox is found in **Tools|Options|MediaFrame** of the SDB Server and will become active only with MediaFrame turned on.

- When checked, the application will continue to go through the configured Web Proxy settings in order to communicate with MediaFrame services.

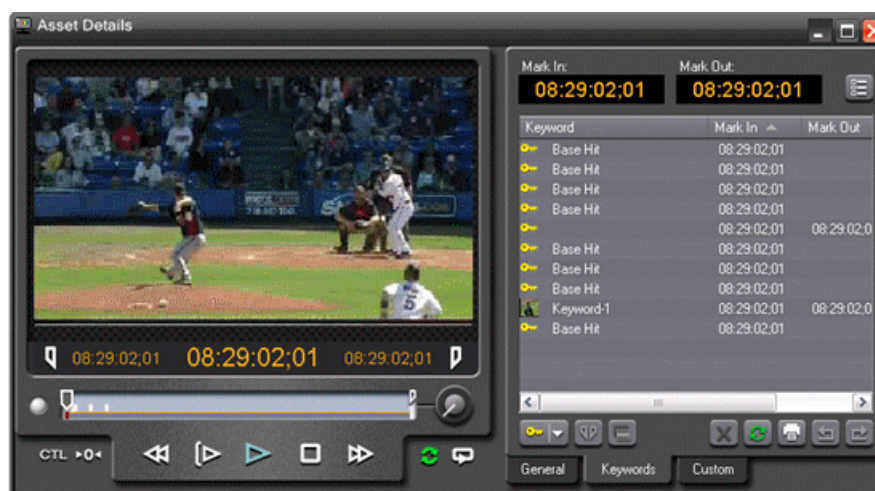
When deselected, web calls through MediaFrame services will bypass the configured settings.

User setting to disallow trimming within ALP

Previously, the ALP allowed unfettered access to trimming placeholders directly from the ALP. To some, this represented too much capability for some journalist seats. Therefore, requests were made to allow for blocking access to trimming.

1. Launch the ALP using Administrator account.
2. Click the **Options** button.
3. Deselect the **Enable Trim Capability** checkbox.
4. Right-click on a clip within ALP and select **View Asset** to view the proxy via the MediaFrame clip player.

The Asset Details window is displayed.



When this is done, launching a clip from the ALP will only present the video window plus metadata view. There will be no additional button for applying a mark in or out to a finished story.

Additional notes

The following section contains additional information about this release.

Setting up AMP control on a K2 Client

K2 Media Client and K2 Summit Production Client are controlled via AMP Protocol over Ethernet.

To set up AMP control of a K2 Client:

1. On AppCenter of the client, click the **Options** button for the desired panel.
2. Set the Control setting to either **Remote Only** or **Remote and Local** and the Protocol setting to **AMP**. Repeat this step for each panel that will be controlled remotely.
3. In the SDB Server application, go to **Tools | Options | Media**, click the Add button to add the media server and add the name of the client.
4. In the Aurora Payout application, go to **Tools | Options | Channel Configuration** and select channel from the dropdown list. To configure the channel, add the channel name, media server and channel server name.

NOTE: *Each K2/Summit channel should be connected to either Aurora Ingest or Aurora Payout only. Connecting to both applications at the same time will cause channel conflicts.*

Installing Aurora Payout software manually

If you don't have SiteConfig within your operation, you can install Aurora Payout software using the Aurora Payout installation CD.

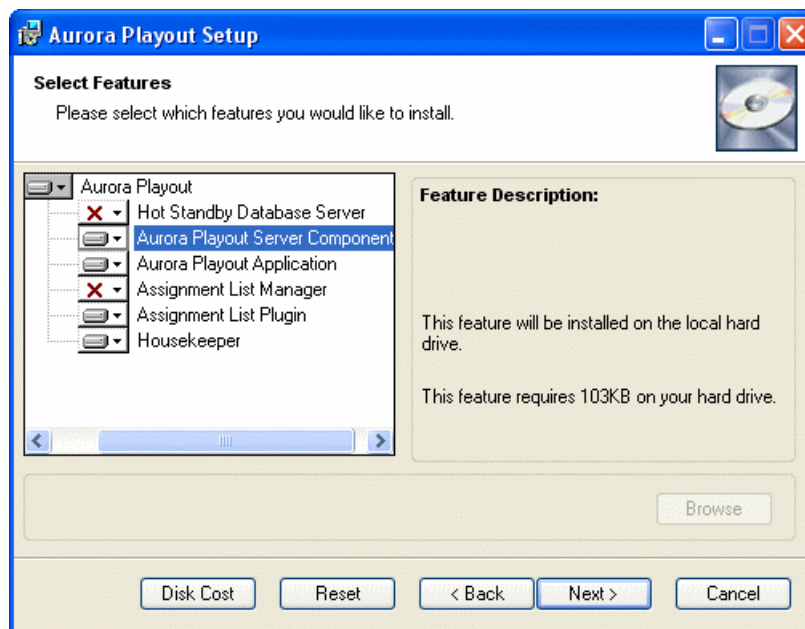
Because you must configure some components with the locations of other components, you should plan your overall installation before you begin.

The various Aurora Payout components reside on multiple computers. Using the installation CD, you can choose which component to install on a particular computer.

Component	Machine where you install it...
Aurora Payout application	Aurora Payout computer. NOTE: <i>It is recommended that Aurora Payout is run at a display resolution of 1280 x 1024.</i>
Aurora Payout Server Components: XMOS Server / SDB Server	Recommend installing on a separate computer even though they are allowed to be on Aurora Payout computer. NOTE: <i>When the XMOS Server application is running on a Windows XP system, it is recommended that the "Windows Firewall" feature be turned off, as it can adversely affect the speed of MOS communication with the newsroom computer system.</i>
Housekeeper	Aurora Payout computer or another PC on the same network.
Assignment List Manager (standalone version)	Non-NCS computers, usually used by Newsroom Producers.
Assignment List Plug-in	All NCS client computers.

Component	Machine where you install it...
Hot Standby Database Server	Optional; install on a PC on the same network as the Aurora Payout computer.

1. Insert the Aurora Payout CD into the CD-ROM drive.
2. Navigate to the CD and double-click **SetupAuroraPayout.exe**.
3. Click **Next** until you reach the Select Features screen.



4. At the Select Features screen, select the component(s) that you want to install.
5. Click **Next** to start the installation.
6. Click **Finish** at the Installation Complete screen.

Installing ALP using a Configuration File

If you want to install the Assignment List Plug-in on multiple computers with the same configuration, you can create a network installer.

1. Copy the Aurora Payout software installation file, **SetupAuroraPayout.exe**, from the CD onto your network.

- Using a text editor such as Notepad, create a file called setup.ini similar to this example:

```
[AssignmentListPlugin]
DatabaseServer=localhost
BackupDatabaseServer=
MosID=gvg.ngp.mos
ThumbnailPath=C:\AuroraPlayout\thumbnails
XMOSServer=localhost
DisplayMode=2
AddTypeToObjSlug=0
UnicodeDragDrop=1
EnablePlayerTrim=0
EnableDelete=1
```

Name	Description
DatabaseServer	The name of the server hosting the Aurora Playout database (primary SDB Server).
BackupDatabaseServer	The name of the server hosting the hot standby Aurora Playout database (backup SDB Server).
MOSID	Your MOS ID.
Thumbnail Path	The full path to the shared thumbnail directory on the computer where thumbnails are stored, in the format \\server\foldername; e.g., if you have a shared folder named “thumbnails” on your playout system named “Playout1”, the path would be \\Playout1\thumbnails. This path needs to match the path set in Aurora Edit—Tools Options Aurora Playout Thumbnails Path.
XMOS Server	The name of the computer hosting the XMOS Server.
Display Mode	Determines the display mode of the Assignment List Plug-in: 0 for Placeholder List only, 1 for Rundown View only, 2 for both Rundown View and Placeholder List display.
AddTypeToObjSlug	Determines whether to insert the placeholder type to the MOS name when the placeholder is dragged and dropped into a script: 0 for off, 1 for on.
UnicodeDragDrop	Your Newsroom Computer System: 0 for iNEWS or 1 for ENPS/Octopus.
EnablePlayerTrim	Determines whether placeholder can be trimmed in the MediaFrame clip player: 0 for off, 1 for on.
EnableDelete	Determines whether placeholder deletion is allowed in ALP: 0 for off, 1 for on.

- Save the file in the directory with the SetupAuroraPlayout.exe file.

4. a) Navigate to the network directory where you saved the installer and configuration file and double-click **SetupAuroraPlayout.exe**.
- b) Click **Next** until you reach the Select Components screen.
- c) At the Select Components screen, check the **Assignment List Plugin** checkbox and click **Next**.
- d) Select **Configure Assignment List Plugin using setup.ini** and click **Next**.
- e) Click **Next**.
- f) Click **Finish** to complete the installation.

The installer uses the setup.ini file to configure the Assignment List Plug-in.

Installing ALP using a Batch File

You can also create a batch file to automatically install the Assignment List Plug-in using the setup.ini file.

1. Create a text file named **setupALP.bat**.
2. In the file, put this text:

```
.\AuroraPlayout\FILEPATH1\DotNetInstall.EXE

.\AuroraPlayout\FILEPATH2\AuroraIngestPlayoutPrereq.EXE
msiexec.exe /package "AuroraPlayout.msi" /QB
ALP_INSTALL=1
```

3. Save the file into the same directory as the Aurora Playout installer and your setup.ini file.
4. From each computer on which you are installing the plug-in; double-click **setupALP.bat**.

The batch file runs and installs the plug-in.

Setting up ENPS

To set up ENPS for use with Aurora Playout, you need to modify your ENPS configuration.

1. On an ENPS client, log in as the administrator and start up ENPS.
2. From the fourth folder rover (e.g. KXYZ NEWS), select **System Maintenance | Groups | New** and create a new group with these parameters:

ID	KXYZGVG
Description	GV Clips
Server	Select the name of your ENPS server from the dropdown list

3. Click **Save** and close ENPS on the workstation.
4. Close the News Object Manager and it should restart automatically. After the NOM has started, restart the ENPS client.

- From the fourth folder rover, select **System Maintenance | MOS Configuration | New** and create a new MOS entry with these parameters:

ID	The MOS ID; this value is case sensitive and must match the MOS ID configured in the XMOS Server Options. The recommended format is <family>.<machine>.<location>.<enterprise>.mos. Standard practice is to use station call letters for location and station group abbreviation for enterprise.
Description	GV Assignment List
IP	The IP address or host name of the machine hosting the SDB Server and the XMOS Server.
ActiveX	GVG.XMOSCtrl.1
Default Settings	Leave blank. These settings are configured when you install the Assignment List Plug-in.
Program	The group ID you configured in step 2.
MOS Version	2.6 or 2.8.2
Local DragDrop	Off
Auto Create	On
Story Send	On

- From the fourth folder rover, select **System Maintenance | Global Configuration Options**, add a new property named `AddMOSObjDuration` and set its value to `1`.

NOTE: *AddMOSObjDuration is the optional setting that allows the duration of clips to be automatically included in the rundown timing. If you prefer to manually enter the duration of your story and clips, do not activate this setting.*

- On the ENPS server, close the NOM one last time and let it restart automatically.
- Restart the ENPS client application.
- Install the Assignment List Plug-in on all ENPS clients where this functionality is needed.

Known Issues

The following limitations are present in this release of software. If you wish to obtain more information about these limitations, please mention the reference numbers.

Aurora Payout

CR42885	Description:	If Aurora Payout doesn't play all the way through your playlist when using the Archive Play feature, there may be a problem with the black clip that is used as filler between clips.
	Workaround:	Make sure that you have a clip called "BLACK" (all uppercase) in the same bin on the Media Server where you send stories for payout (normally the "default" bin). One way to create this clip is to insert 10 seconds of filler into an otherwise empty Aurora Edit sequence and send it to the payout bin.
CR68152	Description:	A K2 version 3.2 payout system supports a maximum of only eight channeless AMP connections at one time (this is separate from the channeled connections that are used for playback).
	Workaround:	Make sure only eight channeless AMP connections are activated at a time. So, for example, only one SDB Server connection and seven Housekeeper connections to a K2 can be configured at a time.
CR68611	Description:	Problems with updating the Ready status of clips.
	Workaround:	More than one Aurora Payout system should not be configured to connect to the same channel on a K2 as this can cause problems with updating the Ready status of clips.
PR20458	Description:	When installing Aurora on Windows 7 clients, a pending SiteConfig dialog can be missed.
	Workaround:	When a dialog is pending, a blinking icon displays on the Windows 7 task bar. Clicking on this indicator brings up the dialog that takes you to the isolated session. If you are logged in via remote desktop, the interactive services detection service sends a notification about the pending dialog. If the notification has been missed, go into Windows Services and stop and restart the Interactive Services Detection Service. This causes the service to send an immediate notification about the pending dialog.

MediaFrame

CR91630	Description:	There is no Clear Points function in the MediaFrame Clip Viewer of ALP and Playlist.
	Workaround:	To reset trimmed clips back to the original mark in and mark out, you must manually move the new mark in and out back to their original positions and reset the mark points individually.
CR99292	Description:	Republication of sequence, master clip, or subclip causes metadata associations to break.

Workaround: Before resending, if the previously published version of the item is deleted from the publish folder, then the resend will preserve metadata association. To delete the previously published item, use Aurora Browse to list the associated assets for the logical asset, then delete only the asset (a sequence, for example) that is in the Aurora Edit publish folder.

Newsroom Computer System (NCS)

CR34585 **Description:** When working with iNEWS rundowns, the Rundown Bar window in Aurora Payout will always display "NOT READY" in the Status column.

Workaround: This column is designed to work with the "MOS Ready to air" property that is available with ENPS rundowns. Since this feature is not applicable with iNEWS rundowns, you may wish to resize the Status column to its minimum size when connected to an iNEWS system.

CR35882 **Description:** The connection between iNEWS rundowns is lost and then re-established (such as by rebooting the iNEWS server).

Workaround: Re-monitor your rundowns through iNEWS before they will be available in Aurora Payout's dropdown list.

CR35932 **Description:** When connected to a Newsroom Computer System, channel assignment or status changes that were made through the Aurora Payout interface will be reset if the item's rundown position is changed on the NCS.

Workaround: This is by design. If you wish to keep manual channel assignments when reordering items, you can assign channels through the NCS, rather than through Aurora Payout.

CR44269 **Description:** In ENPS client, the Actual column couldn't be updated with the Editorial Duration set for the Aurora Payout placeholder.

Workaround: In the ENPS client, the script window for a story must be closed before the Actual column will be updated with the Editorial Duration set for the Aurora Payout placeholder.

CR44677 **Description:** When media is sent to a placeholder that is embedded in an iNEWS story, the Clip Duration column in the iNEWS client will not update.

Workaround: The duration will update if the media is first sent to the placeholder and then added to the iNEWS story.

CR49674 **Description:** Differences in MOS status reporting could lead to Octopus not operating correctly with Aurora Payout.

Workaround: Octopus users need to make these following changes to the Statuses tab within **Admin | MOS | Devices** of the Octopus application:

1. Change **CUED** status to **STAND BY**.
 2. Change **PLAYED** status to **END**.
-

CR63446	Description:	Trimming a clip in an Aurora Playout channel will not affect the duration that displays on a Newsroom Computer System.
	Workaround:	None.
CR69097	Description:	Status translation table in mosconfig.xml on the iNEWS MOS Gateway system did not operate correctly with Aurora Playout.
	Workaround:	<p>iNEWS users may need to make the following changes to the status translation table in mosconfig.xml on the iNEWS MOS Gateway system in order to make statuses operate correctly with Aurora Playout:</p> <ol style="list-style-type: none">1. Change <code><statusCued>CUED</statusCued></code> to <code><statusCued>STAND BY</statusCued></code>.2. Change <code><statusStopped>PLAYED</statusStopped></code> to <code><statusStopped>END</statusStopped></code>.
CR75836	Description:	With iNEWS, misconfigured settings can cause stories to drop to the bottom of the playlist when they are newly inserted, or when their channel assignment is changed.
	Workaround:	<p>This problem can occur when the mosconfig.xml on the iNEWS gateway has "handlesRoItemLevel" set to "YES". Ensure that the line in the mosconfig.xml is set as follows:</p> <ul style="list-style-type: none">• <code><handlesRoItemLevelCommands> NO</code> <code><handlesRoItemLevelCommands></code>
