

# NewsBrowse Version 3.1 Release Notes

## Table of Contents

<i>Grass Valley Product Support</i> .....	2
<i>About this document</i> .....	3
<i>NewsBrowse features</i> .....	3
<i>Special Notes on 3.1 release</i> .....	3
<i>NewsBrowse version compatibility</i> .....	4
<i>Installing NewsBrowse software</i> .....	5
<i>Tips</i> .....	5
<i>Verify the NewsBrowse 3.1 installation with .Net</i> .....	5
<i>Migrating from version 2.7a to version 3.1</i> .....	6
<i>Running NewsBrowse on a “split” K2 system</i> .....	6
<i>Verify K2</i> .....	7
<i>Verify DSM and NewsEdit</i> .....	7
<i>Configure SmartBins</i> .....	7
<i>Install NewsFTP</i> .....	7
<i>Configure MDIs</i> .....	8
<i>Configure Encoders</i> .....	10
<i>Configure Archive</i> .....	10
<i>Configure FlashNet</i> .....	10
<i>Configure DIVA</i> .....	11
<i>Install, test Transfer</i> .....	11
<i>System test</i> .....	11
<i>Known problems</i> .....	12

# Grass Valley Product Support

To get technical assistance, check on the status of problems, or report new problems, contact Grass Valley Product Support via e-mail, the Web, or by phone or fax.

## Web Technical Support

To access support information on the Web, visit the product support Web page on the Grass Valley Web site. You can download software or find solutions to problems by searching our Frequently Asked Questions (FAQ) database.

**World Wide Web:** <http://www.thomsongrassvalley.com/support/>

**Technical Support E-mail Address:** [gvgtechsupport@thomson.net](mailto:gvgtechsupport@thomson.net).

## Phone Support

Use the following information to contact product support by phone during business hours. Afterhours phone support is available for warranty and contract customers.

United States	(800) 547-8949 (Toll Free)	France	+33 (1) 34 20 77 77
Latin America	(800) 547-8949 (Toll Free)	Germany	+49 6155 870 606
Eastern Europe	+49 6155 870 606	Greece	+33 (1) 34 20 77 77
Southern Europe	+33 (1) 34 20 77 77	Hong Kong	+852 2531 3058
Middle East	+33 (1) 34 20 77 77	Italy	+39 06 8720351
Australia	+61 1300 721 495	Netherlands	+31 35 6238421
Belgium	+32 2 3349031	Poland	+49 6155 870 606
Brazil	+55 11 5509 3440	Russia	+49 6155 870 606
Canada	(800) 547-8949 (Toll Free)	Singapore	+656379 1390
China	+86 106615 9450	Spain	+ 34 91 512 03 50
Denmark	+45 45968800	Sweden	+46 87680705
Dubai	+ 971 4 299 64 40	Switzerland	+41 (1) 487 80 02
Finland	+35 9 68284600	UK	+44 870 903 2022

## Authorized Support Representative

A local authorized support representative may be available in your country. To locate the support representative for your country, visit the product support Web page on the Grass Valley Web site.

## About this document

This document contains the latest information about the NewsBrowse system. For the complete description and instructions for NewsBrowse, read the NewsBrowse application online Help and the *NewsBrowse Installation and Configuration Guide*.

## NewsBrowse features

NewsBrowse creates various low-resolution proxy formats for high-resolution material. The high-resolution material can reside on a Profile XP system—either stand-alone or Open SAN—or on a NewsShare NAS. You can use the NewsBrowse application to edit stories using the low-resolution proxy, which is accessible from the journalist’s desktop. NewsBrowse also provides a rich metadata search engine that allows you to search for clips using various criteria.

NewsBrowse integrates with the NewsEdit system for further editing. NewsBrowse can also pull high-resolution video from a Video Server and assemble an on-air quality sequence.

From the NewsBrowse application you can archive and restore high-resolution material. Archived assets are still visible from the NewsBrowse application.

## Special Notes on 3.1 release

**Integration with Open SAN and Profile XP storage** — NewsBrowse 3.1 is qualified with Profile/Open SAN systems. Systems running NewsBrowse 2.7a will continue to have the “Profile-centric” view of assets. Newer systems run with a News MDI, but this is not required (or supported) in legacy systems.

**K2 MDI** — A K2 Media Client and/or K2 Media Server can be added to the MediaFrame core system as a managed device.

**AxiomTek PC** — The AxiomTek PC is no longer supported as a NewsBrowse server platform. This machine was a part of some early NewsBrowse systems. If you use a AxiomTek PC as your NewsBrowse server, you must upgrade to the Dell 2850 (dual CPU) platform or the HAFT platform as part of the upgrade to NewsBrowse 3.1.

**Archive** — NewsBrowse 3.1 supports full archive and restore with DIVArchive, EMC Avalon, and FlashNet archive servers. Support for partial file restore will be provided as a follow-on patch release.

## NewsBrowse version compatibility

The following components and systems have been qualified to work together in this 3.1 release of NewsBrowse.

Component or system	Version
NewsBrowse Server Software	3.1.0.78
NewsBrowse Encoder Software	3.1.0.7
Profile XP system software	5.4.8.7
NewsEdit Software (Conform Server, SmartBin Service)	5.5
NewsFTP	3.0 (also known as 5.6)
M-Series system software	2.0.13.1
DIVArchive software	5_8_7_3_0
FlashNet software	5.8.3.0
Avalon software	3.1
IngestStation	1.6
NewsQ Pro	2.1
K2 (with appropriate SNFS, as specified in K2 release notes)	3.0.1.4 and 3.0.1.19
Transfer application	1.0.0.20

# Installing NewsBrowse software

For the general installation instructions for NewsBrowse software, refer to the *NewsBrowse Installation and Configuration Guide*.

## Tips

**EDL locations** — For each of the following EDL operations, configure a different locations:

- Save EDL
- Temporary save EDL
- Conform EDL
- Export EDL

**Adding Advanced Encoders to existing systems** — For existing sites wishing to increase their Image Support Server or Sequential Encoder capacity, the Advanced Encoder can be used in their place.

**Upgrade to DirectX 9.0c or higher on NewsBrowse client machines** — Several problems are solved with this version of DirectX, which can be installed from the “client setup” page.

**Use filters to remove future assets** — To compensate for a possible drift of the clock on a Profile XP, NewsBrowse can display an asset that does not yet exist. These future assets have a duration of zero. To keep these future assets from being displayed in NewsBrowse, configure and apply a filter that removes assets with zero duration (Duration in frames = 0, inverse the logic).

## Verify the NewsBrowse 3.1 installation with .Net

If your system was deployed in the field without manufacturing assistance, check the following:

NewsBrowse 3.1 uses Microsoft.Net Framework 1.1 and the “machine.config” for this framework will require the same modification. The machine.config file for Microsoft.Net Framework 1.1 is located at the following:

```
C:\WINNT\Microsoft.NET\Framework\v1.1.4322\CONFIG\machine.config
```

Open the file in notepad and perform a search for “<process”. Look for the following:

```
userName=”machine”
```

Change it as follows:

```
username =”SYSTEM”
```

Restart IIS for changes to take.

## Migrating from version 2.7a to version 3.1

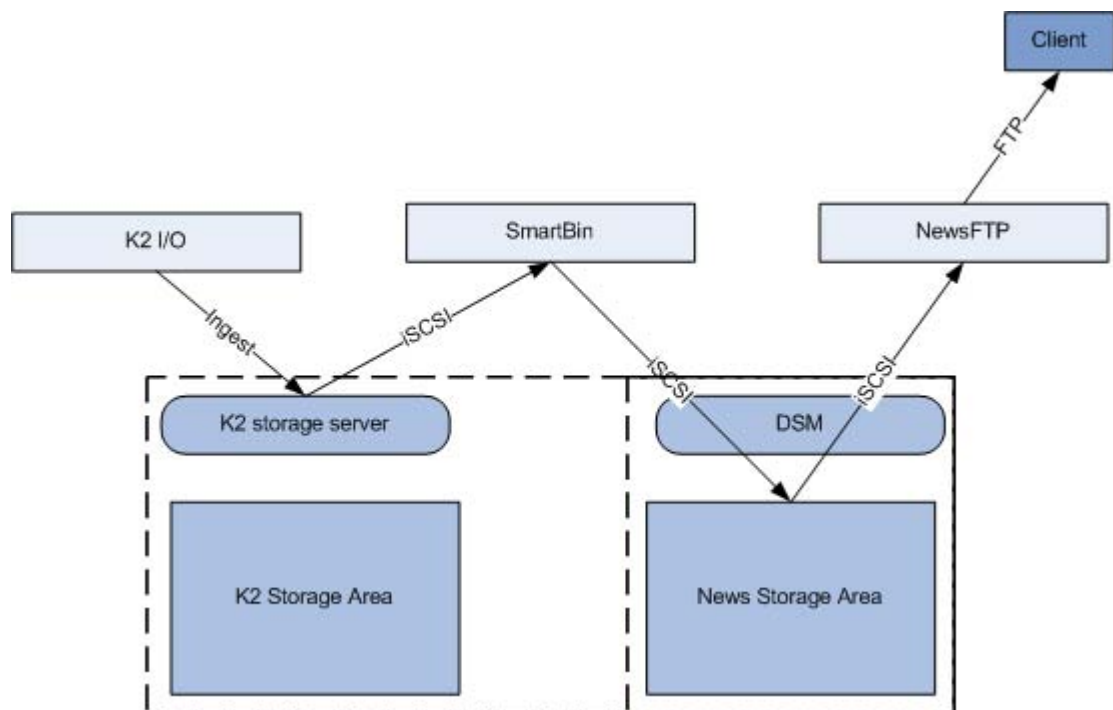
Take the following into consideration when upgrading from version 2.7a to version 3.1:

- As with any NewsBrowse upgrade, back up the database first
- NAS must be connected
- Before the upgrade, make a list of the scavenge folders. After the upgrade, on the Rules Automation configuration page, delete and re-enter all rules. This page is greatly simplified in NewsBrowse 3.1.
- After upgrade, check the Sequential Encoder Primary Media Server configuration page. A new field is available for Profile asset information configuration. In this field you can dedicate a Sequential encoder to a special bin. By default, it is set to \*, which makes all bins available. If desired, you can use this new field to specify a particular bin for the Sequential encoder.

## Running NewsBrowse on a “split” K2 system

The first deployments of News on K2 use a “split” architecture in which part of the storage is used by K2 clients, and part is used for News. A SmartBin (often a SmartBin Encoder) is used to move material from the K2 “side” to the News “side”. This is a temporary work-around until winking becomes available.

Note that the SmartBin and NewsFTP are running as iSCSI clients. The NewsFTP client is an archive system.



The basic steps are as follows:

1. K2 storage and I/O clients operational
2. News system operational
3. Configure MDIs
4. Enable encoders
5. Configure archive
6. Configure Transfer
7. System test

These steps are documented in the following procedures. Work through these procedures in sequence.

## **Verify K2**

Configure and test K2 shared storage system. Test ingest and playout

## **Verify DSM and NewsEdit**

Install DSM, NewsEdit clients. Perform ingest via edit to verify connection to shared (K2) storage

## **Configure SmartBins**

1. The SmartBin box must be an iSCSI client. Verify that this is so.  
Refer to the *NewsBrowse Installation and Configuration Guide* for iSCSI/SNFS installation instructions.
2. On the host table of the encoder another entry needs to be created. This entry should have the K2 server's FTP IP entered with the name of the K2 client.

Host table can be located under c:\WINNT\system32\drivers\etc folder

***NOTE: Tthis host table configuration will no longer be valid after the release of 5.6 SmartBins***

3. Setup SmartBins  
Refer to "Guide for SmartBin Encoder" later in this document for configuration of SmartBins
4. Test SmartBins  
Refer to "Guide for SmartBin Encoder" later in this document for tests to determine if SmartBins configuration is correct.

## **Install NewsFTP**

1. NewsFTP box must be an iSCSI client. Verify that this is so.

Refer to the *NewsBrowse Installation and Configuration Guide* for iSCSI/SNFS installation instructions.

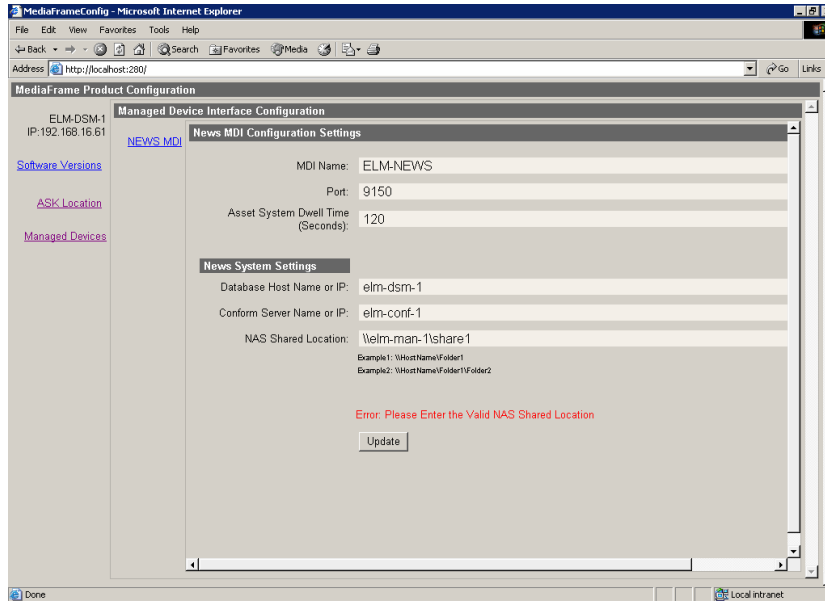
2. Disable Microsoft FTP as follows:
  - a. If File Transfer Protocol (FTP) Server is installed on the machine it needs to be disabled. This can be done via the Services MMC found in the administrator tools. Stop the FTP Server service and set its “Startup Type” to disabled.
  - b. If FTP Server has not been installed on the machine no additional steps are needed to disable it.
3. Install version 5.6 of NewsFTP.
4. Configure NewsFTP as follows:
  - a. Close NewsFTP application (Right click on NewsFTP icon in system tray, choose exit).
  - b. Go to Start->Programs->Vibrint 5.5->NewsFTP Config.
  - c. Set Default Bin Location to V:\VibrintAVFiles.
  - d. Close the configuration app.
  - e. Go to Start->Programs->Vibrint 5.5->NewsFTP to restart NewsFTP.
5. Do the following manual FTP test:
  - a. Open DOS prompt on machine with NewsFTP installed.
  - b. Type “FTP localhost”.
  - c. Username should be “vmfmovie” with no password.
  - d. Type “bin”
  - e. Type “dir”.
  - f. Type “cd <name of a directory>  
The directory should have been created when testing SmartBins in the procedure earlier in this section.
  - g. Type “dir”
  - h. Type “get <name of a clip>  
A clip should have been created when testing SmartBins in the procedure earlier in this section.
  - i. If transfer starts, NewsFTP works fine.

## Configure MDIs

1. Add nbadmin account to K2 storage as follows:
  - a. Using the Computer Management MMC navigate to “Local Users and Groups”



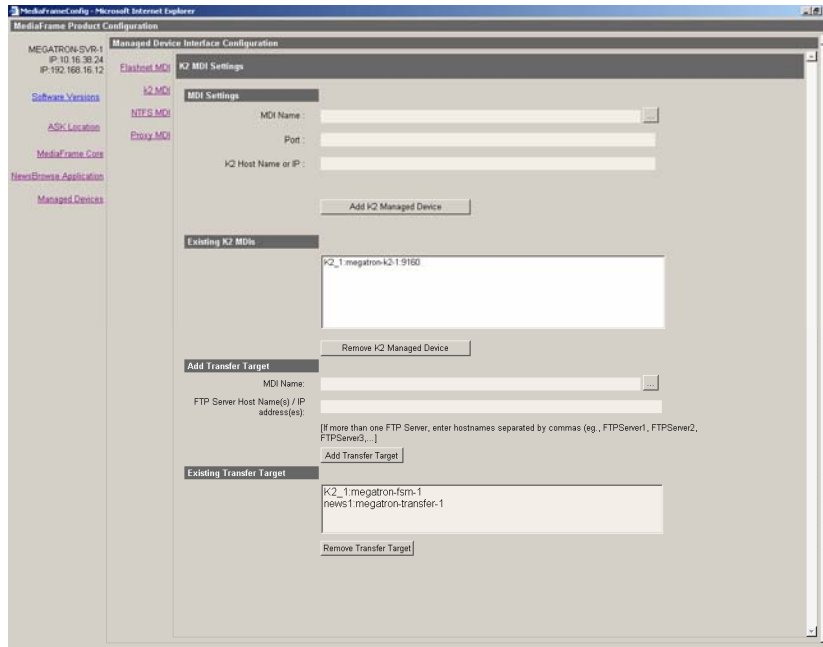
- b. In the Users folder create and new user nbadmin password \*\*\*\*\*
  - c. In the Groups folder open “Administrators” and click the add button
  - d. Type nbadmin and click OK
2. Configure News MDI as follows:
    - a. On DSM machine go to http://localhost:280.



- b. Configure as illustrated.
 

NOTE NAS shared storage location can be blank

3. Configure the K2 MDI as follows:
  - a. One MDI for one of the K2 I/O Clients
  - b. Set transfer target to K2 storage server
  - c. Add transfer target for NewsFTP



## Configure Encoders

1. Configure SmartBin Encoders as follows:
  - a. Set NAS location.
  - b. Test ingest: new asset added to system.
  - c. Test delete: SmartBin asset removed from the system.
2. Configure Advanced Encoders as follows:
  - a. The Advanced Encoder must be an iSCSI client. Verify that this is so.  
Refer to the *NewsBrowse Installation and Configuration Guide* for iSCSI/SNFS installation instructions.
  - b. Test scavenge: new asset added to system.
  - c. Test delete: scavenged asset deleted from the system

## Configure Archive

Use the appropriate procedure for your archive system.

## Configure FlashNet

Point to NewsFTP instance:

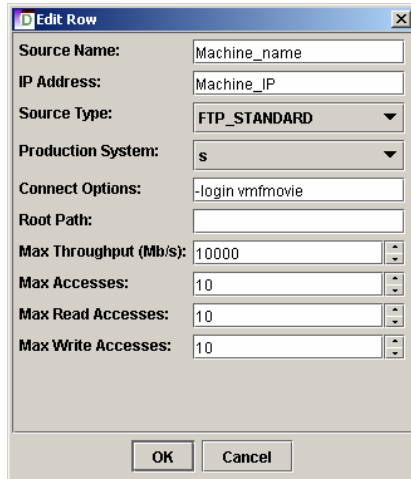
1. On the FlashNet machine locate comms\_methods file under  
C:\FlashNet5\database
2. Add the entry below to comms\_methods file  
*Machine\_name* 14 @vmfmovie/vmfmovie

*Machine\_name* is where the NewsFTP is installed, as in “Install NewsFTP” earlier in this section.

## Configure DIVA

Point to NewsFTP instance:

1. Using the DIVArchive Configuration Utility add the NewsFTP location as follows:
  - a. Under the “System” tab navigate to the “Sources and Destinations” pane



- b. Add the entry
- c. *Machine\_name* and *Machine\_IP* should be the machine that NewsFTP was installed on. Step 4

## Install, test Transfer

Refer to the *Transfer Instruction Manual* for installation of Transfer 1.0

1. Set ASK.
2. Test K2/News transfers.
3. Test News/Archive transfers.

Note: K2/archive transfers are not supported at the current time

## System test

1. Ingest Station: New clip is SmartBinned to News, becomes asset in the system
2. Edit in Browse and conform to scavenge location.
3. Archive and restore test.
4. Delete test.

## Known problems

**Problem:** Partial file restore not yet implemented for Avalon (EMC), FlashNet (SGL), or DIVArchive (Front Porch Digital)

**Workaround:** If your facility depends on these features with 2.7a delay the upgrade to NewsBrowse 3.1. A patch to 3.1 is forthcoming which will enable partial file restore. Contact your service representative for an update on the schedule for this.

**Problem:** When opening the Smart Bin Encoder Status Page in a system where a large number of Smart Bin Ingest Jobs have occurred in the last 24 hours, the page may take up to several minutes to begin displaying data. (CR# 59286)

**Workaround:** Wait until the page is finally displayed.

**Problem:** Links in related tab won't work for any asset with a single quote (') in the name. (CR #56657)

**Workaround:** No workaround available. This should not affect normal operations, as the related tab is only required for system diagnostics.

**Problem:** For NewsShare NAS systems, there is no ingest functionality in NewsBrowse. Opening the ingest view will cause a failure. (Classic systems with single channel encoders will continue to use the ingest view.) (CR# 56715)

**Workaround:** Do not install the Ingest portions of the NewsBrowse Server software (or alternatively, do not give ingest or ingest view licenses to users) on a NewsShare NAS system.

**Problem:** NewsBrowse Advanced/SmartBin Encoders support 16 bit audio, matching the rest of the News products. They will not encode other audio configurations. (CR #56678)

**Workaround:** Configure the audio settings in the ingest servers to 16 bits.

**Problem:** Sometimes the temporary EDL files created during conformance are not deleted. (CR # 52582).

**Workaround:** If the temporary EDL folder is consuming too much disk space, the temporary EDLs can be cleaned up using the following process:

1. Suspend all Conform operations during this process.

2. On the NB server configuration page navigate to NewsBrowse Application → Conform Services.
3. Confirm the device and pathname for the Temporary EDL location.
4. Navigate to that location and delete the files.

**Problem:** The SmartBin Encoder is able to maintain real time performance if the delay between recordings is 15 seconds or more. If the delay is less than 15 seconds, the SmartBin Encoder will take about a minute into the recording to get caught up. (CR 57370)

**Workaround:** Ensure that the delay between successive SmartBin Encoder jobs is greater than 15 seconds. If this is not possible, ensure the length of the media being encoded is at least one minute in duration.

**Problem:** NewsBrowse 3.0 will not scavenge audio only assets. (CR #58568)

**Workaround:** No workaround available.

**Problem:** After a rapid sequence of control clicks in the web interface, the different sections of the UI may lose communication with each other. Loading an asset or adding a segment to the timeline may not be possible. (CR# 58763)

**Workaround:** Simply reload the asset to recover; alternatively, save all work and restart the application.

**Problem:** GXF import (from within NewsEdit) into a scavenge bin fails. (CR 58258)

**Workaround:** Import file into non-scavenge folder. When the import is complete, move the clip to the scavenge folder.

**Problem:** EDL preview ends one frame early. (CR 58952)

**Workaround:** Frame-accurate previewing of EDLs using NewsBrowse is not supported. Instead, either preview with the Advanced Edit application, or Conform to a NewsEdit Sequence and preview with a NewsEdit application.

**Problem:** Double-clicking quickly on the “OK” button in the keywords tab of the NewsBrowse User Interface can add multiple keywords with the same information. (CR 57740)

**Workaround:** Only use single-clicks when pressing the “OK” button. If multiple keywords are added, delete the duplicate keywords.

**Problem:** When the EDL timeline is completely zoomed in, the green EDL segment is no longer aligned correctly with the black pointer. (CR 58596)

**Workaround:** Zoom out one step in order to align the pointer with the segment.

**Problem:** During Batch deletion of clips, some of the clips might fail for the first time, but then they are successfully deleted on the second try. (CR# 58108)

**Workaround:** Reattempt a second deletion on those clips which were not successfully deleted on the first attempt.

**Problem:** If one NewsBrowse user attempts to delete an asset at the same time another NewsBrowse user is viewing the clip, the High-resolution material will be deleted, however the proxy will remain. (CR# 57788)

**Workaround:** After the other user is no longer viewing the clip, retry deletion of the asset.

**Problem:** Sometimes, the NewsMDI does not delete the source clip (a master clip) when the clip is being archived and the “delete online media following archive” is selected. (CR# 59065)

**Workaround:** Delete the online media manually using either the NewsBrowse or NewsEdit applications.

**Problem:** If the name of an M-Series MDI has not been first added to the ASK Configuration Page, it cannot be added to the list of M-Series MDIs within the M-Series MDI Configuration Page. In this case, when the "Add M-Series Managed Device" button is clicked, the following error message will appear: "Following fields are invalid : MDI Name". (CR# 59274)

**Workaround:** Add the M-Series MDI Name to the ASK configuration page before adding the M-Series MDI Name to the MDI Configuration page.

**Problem:** On certain systems, occasional delayed write popup windows occur during Smart Bin Ingests. Both High-resolution NewsEdit material and proxy are successfully created, however the popup dialog windows remain on the Smart Bin Encoder computer. (CR# 59288)

**Workaround:** Periodically, the Smart Bin Encoder should be monitored and these windows closed.

- Problem:** Web Browser displays wrong NewsBrowse User Interface components after an upgrade. (CR #46747)
- Workaround:** After installation be sure to clear the browser cache on client machines to insure updated components are downloaded. To clear the browser cache in Internet Explorer go to **Tools | Internet Options**, from the **General** tab select the **Delete Files** button, check **Delete all offline content**, and click **OK**.
- Problem:** In the NewsBrowse application, while a clip is loading, if you change the tab selection the tab state can be out of synch with the active area after the clip loads. (CR # 44592)
- Workaround:** Change the tab selection only after the clip has finished loading.
- Problem:** Occasionally a UIM transfer fails, but the NewsBrowse application automatically retries and the transfer is successful. An error is reported in the log, but in this case it can be ignored, since the transfer is successful. (CR # 50533)
- Workaround:** No workaround required.
- Problem:** Though the UIM supports six simultaneous transfers, on rare occasion it behaves as if it supports only four simultaneous transfers and the fifth transfer fails. (CR # 49987)
- Workaround:** Restart the UIM.
- Problem:** An EDL segment gets stuck on the cursor if you drag the EDL outside of the timeline frame. When you move the cursor back into the timeline frame the EDL segment is attached. (CR # 50158)
- Workaround:** Move the cursor into the timeline frame and left-click. This releases the EDL segment.
- Problem:** Low-res browse controls not frame accurate, 0 ending timecode. (CR # 50796)
- Workaround:** Upgrade NewsBrowse client to DirectX 9.0c or higher. For additional troubleshooting tips, click on the “troubleshooting tips” link on the “client setup page”.
- Problem:** Very large batch delete (~10K) causes NAS to get very slow. (CR # 50796)
- Workaround:** Reboot NAS. The system will recover after about 20 minutes when the deletions are complete.

- Problem:** DIVArchive and FlashNet restore operations fail if the destination folder has clips with the same base name as the clip to be restored. This occurs even if duplicate name handling is enabled. The specific condition that causes the failure is when the name of the clip to be restored is *clipname*, and the destination folder has a clip named *clipname* **and** a clip named *clipname\_0*. (CR # 50770)
- Workaround:** Users must restore to a different destination folder or delete/rename the clips in the destination folder that have the same basename as the clip to be restored.
- Problem:** For DIVArchive and FlashNet, the control in the NewsBrowse application for renaming is disabled on full restore. (CR # 50542)
- Workaround:** This is as designed. DIVArchive and FlashNet do not support a user specified name for a full restore. There is no workaround.
- Problem:** The NewsBrowse application shows black flashes between EDL segments. (CR # 50155)
- Workaround:** This occurs when the NewsBrowse client machine is experiencing slow performance. Optimize network performance or use a faster client machine.
- Problem:** Sometimes, the NewsBrowse User Interface sometimes starts up with the scroll bars on the “find” tab partially hidden. (CR #59376)
- Workaround:** Press the refresh button in the upper right button of the NewsBrowse User Interface.
- Problem:** In NewsBrowse systems containing both Image Support Servers (ISS) and Advanced Encoders, jobs to create thumbnails and storyboards where Proxy (MPEG-1) is the source may be sent simultaneously to both an ISS and an Advanced Encoder. (CR #59390)
- Workaround:** In NewsBrowse systems containing both ISS’ and Advanced Encoders, the Advanced Encoders must be configured to only produce proxy (not storyboards and thumbnails) from Hi-resolution material. Thus, the ISS must perform all proxy-to-storyboard/thumbnail creation.
- Problem:** Scavenge encoding will not work on conformed clips less than 10 seconds in length. (CR #62104)
- Workaround:** None.