



grass valley
A **BELDEN** BRAND

ORBIT

Version: 3.1.11

Release Notes

2019-05-24

Copyright and Trademark Notice

Copyright © 2019, Grass Valley Canada. All rights reserved.

Belden, Belden Sending All The Right Signals, and the Belden logo are trademarks or registered trademarks of Belden Inc. or its affiliated companies in the United States and other jurisdictions. Grass Valley, Orbit are trademarks or registered trademarks of Grass Valley Canada. Belden Inc., Grass Valley Canada, and other parties may also have trademark rights in other terms used herein.

Terms and Conditions

Please read the following terms and conditions carefully. By using this documentation, you agree to the following terms and conditions.

Grass Valley hereby grants permission and license to owners of Orbit to use their product manuals for their own internal business use. Manuals for Grass Valley products may not be reproduced or transmitted in any form or by any means, electronic or mechanical, including photocopying and recording, for any purpose unless specifically authorized in writing by Grass Valley.

A Grass Valley manual may have been revised to reflect changes made to the product during its manufacturing life. Thus, different versions of a manual may exist for any given product. Care should be taken to ensure that one obtains the proper manual version for a specific product serial number.

Information in this document is subject to change without notice and does not represent a commitment on the part of Grass Valley.

Warranty information is available from the Legal Terms and Conditions section of Grass Valley's website (www.grassvalley.com).

Warranty Policies

Warranty information is available from the Legal Terms and Conditions section of Grass Valley's website (www.grassvalley.com).

toc

Table of Contents

Installation and Network Requirements	3
Hardware Requirements	3
System Requirements for running Orbit Client	3
System Requirements for running Orbit Services	4
Network Requirements.....	4
TCP/UDP Port Usage	4
Software Component Compatibility.....	7
Installing Orbit Client on a PC	7
Installing Orbit Services on a Server	8
Documentation.....	8
Release Notes	9
Overview	9
New Features, Enhancements, and Bugs Fixed in Orbit	9
Orbit Version 3.1.11.....	9
Orbit Version 3.0.10.....	14
Orbit Version 2.5.17.....	18
Orbit Version 2.5.17.....	18
Orbit Version 2.5.13.....	18
Orbit Version 2.5.12.....	18
Orbit Version 2.4.23.....	19

Orbit Version 2.2.15.....	19
Orbit Version 2.2.14.....	19
Orbit Version 2.2.9.....	20
Orbit Version 2.1.25.....	20
Orbit Version 2.1.20.....	21
Orbit Version 2.1.17.....	21
Orbit Version 2.1.15.....	22
Orbit Version 2.0.24.....	22
Orbit Version 2.0.23.....	23
Orbit Version 2.0.22.....	23
Orbit Version 2.0.21.....	23
Orbit Version 2.0.20.....	23
Orbit Version 2.0.19.....	23
Orbit Version 2.0.18.....	24
Orbit Version 2.0.17.....	24
Orbit Version 2.0.16.....	24
Orbit Version 2.0.15.....	24
Orbit Version 2.0.14.....	24
Orbit Version 2.0.13.....	24
Orbit Version 2.0.11.....	25
Orbit Version 2.0.10.....	25
Orbit Version 2.0.9.....	25
Orbit Version 2.0.8.....	25
Orbit Version 2.0.7.....	25
Orbit Version 2.0.6.....	25
Orbit Version 2.0.5.....	25
Orbit Version 2.0.4.....	26
Orbit Version 2.0.3.....	26
Orbit Version 2.0.2.....	26
Orbit Version 2.0.1.....	26
Orbit Version 1.2.13.....	26
Orbit Version 1.2.12.....	27
Orbit Version 1.2.11.....	27
Orbit Version 1.2.10.....	27
Orbit Version 1.2.9.....	27
Orbit Version 1.2.8.....	28
Orbit Version 1.2.7.....	28
Known Issues and Limitations.....	28
Contact US.....	29
Grass Valley Technical Support.....	29
Corporate Head Office.....	29

1

Installation and Network Requirements

This section details the requirements that must be met prior to installing or upgrading a system with the current version of Orbit.

Hardware Requirements

System Requirements for running Orbit Client

The client platform must meet the following system specifications for optimal performance:

Operating System	Microsoft Windows 10, Windows 7, Server 2016 or Server 2012r2
Processor	Intel Core i5, the minimum required by the operating system, or better
Memory	8GB RAM minimum, the minimum required by the operating system, or more
Disk Space	The minimum required by the operating system plus one GB, or more

System Requirements for running Orbit Services

The server platform must meet the following system specifications for optimal performance:

Operating System	Microsoft Server 2016 or Server 2012r2
Processor	Intel Xeon, the minimum required by the operating system, or better
Memory	16GB RAM minimum, the minimum required by the operating system, or more
Disk Space	The minimum required by the operating system plus one GB, or more. If using the Recording Service to store alarm state minimum requirement is 240GB, or more
Supported Web Browser	Google Chrome only (most recent version) Used to open Orbit Service configuration pages outside of the Orbit Client. The Orbit Service configuration pages can be opened in the Orbit Client without needing a browser to be installed
Java Runtime	Java Runtime Environment version 8u121. Required to open Densité Service Panels only

Network Requirements

It is recommended that the desktop/servers running the Orbit Client and Orbit Services (as well as the associated equipment being configured and monitored) be installed on a dedicated LAN, using the existing security infrastructure. A qualified system administrator should verify that the setup follows the security standards of your organization.

TCP/UDP Port Usage

The various communication protocols used by Orbit require access to specific ports. In networks where a firewall is present between device A and device B, the ports used to communicate from device A to device B must be open on the incoming (external) side of the firewall.

The ports required for communication between the Orbit Client, Orbit Services and other Grass Valley devices that make use of a Domain ID are derived from the value of the Domain ID and the number of participants on the Domain. Note that participant IDs are 0 based.

For each Domain there is one multicast port required, for each participant to a Domain a further two unicast ports are required. A formula is used to calculate the required multicast and unicast port numbers.

Discovery Multicast Port = $7400 + (250 \times \text{Domain ID})$

Discovery Unicast Port = $7400 + (250 \times \text{Domain ID}) + (2 \times \text{Participant ID}) + 10$

Data Unicast Port = $7400 + (250 \times \text{Domain ID}) + (2 \times \text{Participant ID}) + 11$

Default Domain IDs are used by the Orbit Client and Orbit Services, the ports used described below relate to the default Domain ID. If using user defined Domain IDs use the formulas above to calculate the required port numbers

The following network ports must be open inbound and outbound on PCs running the Orbit Client, recalculate if a different Domain ID is used, or if multiple projects that use the same Domain ID are open concurrently:

Description	Default Domain ID	Max Participant ID	Multicast Port	Unicast Ports	Comment
Multiviewer Project	0	0	7400	7410 7411	Domain 0 is a default domain used for Multiviewer discovery. Domain 100 can be user configured.
	100	0	32400	32410 32411	
IP Routing Project	101	0	32650	32660 32661	
	105	0	33650	33660 33661	
C&M Project	100	0	32400	32410 32411	Multiviewer and C&M Projects can share a domain

Note: When opening multiple projects on the same domain at the same time additional ports must be opened in accordance with the number of Domain Participants. Whilst the port numbers can be determined from the above formulae the actual assignment of a port number to a Domain Participant is random.

For example if a Multiviewer Project and C&M Project are both open and using Domain ID 100 then the Max Participant ID becomes 1 as both services have a Domain Participant. The required ports would be:

Default Domain ID	Max Participant ID	Multicast Port	Unicast Ports	Comment
0	0	7400	7410 7411	Domain 0 is a default domain used for Multiviewer discovery
100	1	32400	32410 32411 32412 32413	The assignment of the unicast ports to the Multiviewer and C&M Projects is random

The following ports must be open inbound and outbound on PC's running the Orbit Client:

Port Number	Application / Protocol
2050	Default RollCall communication port, open other ports for RollCall communication as described in relevant product documentation
9627	Densité Panel Launcher Application
5951 5953 5955	Densité REST API
5957	GSM REST API

The following network ports must be open inbound and outbound on Servers running the Orbit Services, recalculate if a different Domain ID is used:

Description	Default Domain ID	Max Participant ID	Multicast Port	Unicast Ports	Comment
Client Domain	100	4	32400	32410 32411 32412 32413 32414 32415 32416 32417 32418 32419	Ports used by Orbit Services on the client domain: Monitoring MapView Routing Recording Email
Log Server Domain	110	1	34900	34910 34911 34912 34913	Ports used by Orbit Services on the Log Server Domain: Monitoring Densité Control
IP Routing Domain	101	0	32650	32660 32661	Densité Control Service

The following ports must be open inbound and outbound on servers running the Orbit Services:

Port Number	Application / Protocol
5951 5953 5955	Densité REST API
9193 + GV Convergent Area External ID	NP0017 protocol communication port with GV Convergent. The Area External ID can be looked up in the GV Convergent client Area Configurator by selecting the area that needs to be controlled and looking at the External ID Property
2000	Probel SW-P-08 protocol, or as defined in Router Controller
Mail Server Port	The Email Service requires connection to an email server. Refer to documentation for email server for the required connection parameters

Software Component Compatibility

Grass Valley recommends you use the following software components and the stated versions for optimal performance and compatibility with Orbit version 3.0.10:

Product	Requirement for Orbit Compatibility
GV Convergent	Software Version 2.1
iControl	Software Version 8.1 (With Densité and GSM REST API licenses)
IP Edge Routing Controller	Software Version 9.10.15
MV-8 Series Multiviewer	Software Version 3.0.14 FPGA V280 Note: To support NP0017 Tallies version 3.1 is required
Audio Live	Version 1.5.0.14
IQMIX/IQUCP IP Gateways	Version 11.73D
IQAMD	Version 8.60.18
Router Protocols	NP0017 SW-P-08

Installing Orbit Client on a PC

To install the Orbit Client version 3.1.11 on a PC run the installer.

Note: This release installs into C:\Program Files\Grass Valley\Orbit. It can be installed alongside Orbit v2.5. To preserve settings from Orbit 2.5 install version 3.1.11 first, then uninstall Orbit v2.5

Installing Orbit Services on a Server

To install the Orbit Services version 3.1.11 on a server run the installer, ensure to select the Install Services option during installation. Note the client application is also installed on the server.

Documentation

You can obtain the latest version of the Release Notes and all manuals from the Documentation Library section of Grass Valley's website.

2

Release Notes

The Orbit Release Notes guide includes lists of new features and enhancements, bugs fixed, as well as known issues and limitations associated with the latest version of the Orbit software.

Overview

Orbit version 3.1.11 is a major release that adds new features to Orbit. This release also contains bug fixes. See also Known Issues and Limitations.

New Features, Enhancements, and Bugs Fixed in Orbit

The following is a list of Orbit features and enhancements. The most recent items are marked with a star (*) symbol.

Orbit Version 3.1.11

This release adds the following enhancement(s) and corrects the following issue(s).

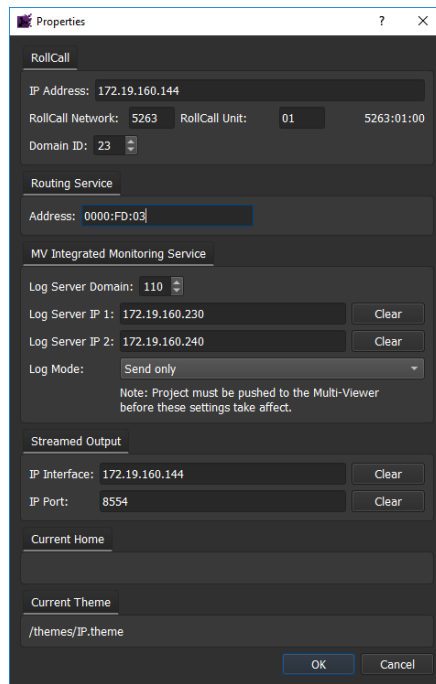
New Features and Enhancements

- * [FUS-2122] - **General, Added support for NP0017 Protocol to Routing Service:** The Orbit Routing Service now supports the NP0017 protocol. This enables soft routing panels in the Orbit client to control GV Convergent. Instructions on how to configure the Routing Service can be found in the Orbit Services User Manual

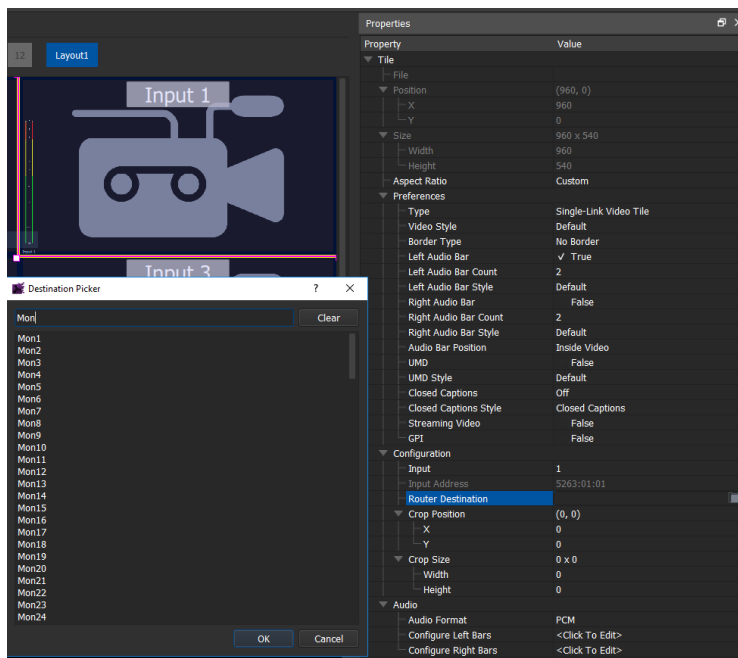
- * [FUS-2347] - **General, Added Routing Panel for breakaway, audio shuffle and bulk routing:**
The Orbit Client now supports a soft routing panel that can be used to make fast routing operations such as route one to many, route with breakaway and route with audio shuffle. The soft routing panels connects to the Orbit Routing Service and therefore is compatible with Router Controllers that support either NP0017 or SW-P-08 router control protocols Instruction on how to operate the Bulk Routing screen can be found in the Orbit Bulk Routing User Manual



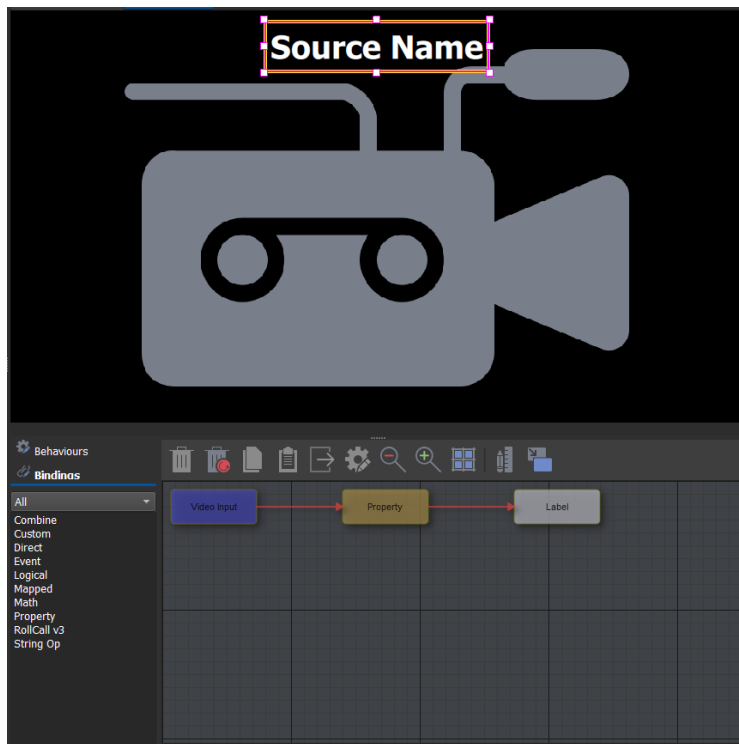
- * [FUS-2382] - **General, Added support for opening Densité Service Panels from the Network Tree:** The service panels for Densité devices can be opened from the context menu on Densité devices in the Network View. Refer to the Orbit MapView User Manual for configuration details
- * [FUS-2426] - **Multiviewer, Added ability to set the router destination on a Tile one a Multiviewer Wall:** The Multiviewer Wall Editor has been enhanced to enable the destination associated with a Multiviewer Tile to be set. The Tile can then automatically show the name of the source routed to the Multiviewer Tile. The Multiviewer Properties should be set with the RollCall address of the Routing Service



The destination associated with a Multiviewer Tile can then be selected from the Property View



- * [FUS-2423] - **Multiviewer, Added Destination Behaviour to obtain source tally name for a given destination:** The Video Input Behaviour has been enhanced such that if a Routing Service is defined in the Multiviewer Properties then the Video Input Behaviour will retrieve the name the of the source routed to the Multiviewer Tile. The Video Input Behaviour can be connected to a Label Widget via a Property Binding to display the source name



- * [FUS-2417] - **General, Text to speech synthesizer:** A new Speech Behaviour has been added that allows a text string to be vocalised using the Client PC sound card
- * [FUS-2398] - **General, Added double click on network tree item to open control screen:** Double click a device in the Network View to open the card service panel
- * [FUS-2413] - **General, Added ability to set the services in the iControl config dialog box to use different IP addresses for GSM Rest, Densite and Lookup Service:** Extended the configuration dialog box for iControl to enable different iControl servers to be configured for the REST APIs and Lookup Service
- * [FUS-2456] - **General, Added additional Log Messages to Orbit Services:** The Orbit Services have been enhanced to log additional information such as the server name and IP address they are running on
- * [FUS-2448] - **Multiviewer, Simplified video tile type definitions:** Renamed the 3G/HD tile type to Single Link as SD, HD, 3G and 12G are supported
- * [FUS-2502] - **Multiviewer, Added Copy to the context menu for all file types except Wall:** Enables existing files to be copied from within the Project View. Copy of Walls is not supported. Walls or Layouts can be imported instead
- * [FUS-2501] - **Multiviewer, Added Save File As to editor types that were missing this functionality:** Users can select Save File As from the File menu to save the current file with a different name

Bugs Fixed

- * [LUCY-1371] - Multiviewer, Corrected issue where renaming a Wall caused Orbit to report all outputs are in use
- * [FUS-2505] - Multiviewer, Corrected issue where Move to Front/Back icons were not enabled when multiple widgets are selected

- * [FUS-2366] - General, Corrected issue where Routing plugin was not writing logging messages
- * [FUS-2372] - MapView, Corrected issue where Link states were not working when path and variables are configured by variables
- * [FUS-2388] - General, Corrected issue where launching project full screen was not working
- * [FUS-2402] - General, Corrected issue where re-installing Orbit overwrote port for service configuration back to 8080
- * [FUS-2405] - General, Corrected issue where GSM text alarm sometimes did not display the correct value
- * [FUS-2410] - General, Corrected issue where iControl Password was shown in the clear while editing
- * [FUS-2414] - General, Corrected issue where Video Widget did not respond to Property Binding on Source Path
- * [FUS-2416] - IP Configuration, Corrected issue where SDP Files generated by Orbit fail conformance tests
- * [FUS-2280] - General, Corrected issue where Recording service with two fixed addresses in the filter was not working
- * [FUS-2288] - General, Corrected issue with Polygon Widget not drawing correctly
- * [FUS-2432] - IP Configuration, Corrected issue where IP Configurator text was truncated at 150% windows scale
- * [FUS-2437] - Multiviewer, Corrected issue where Analog Clock in Auto Wall Editor Mode shows Digital Clock Style
- * [FUS-2441] - Multiviewer, Fixed crash when Wall File was deleted
- * [FUS-2447] - General, Fixed crash when changing tabs if a property is selected
- * [FUS-2267] - General, Corrected issue where a Combo Box copied from a Control Screen did not update correctly
- * [FUS-2450] - Multiviewer, Corrected issue where a new Multiviewer Project has no Theme
- * [FUS-2460] - General, Corrected issue where GSM Text Alarm does not Display Text Value in User Folder
- * [FUS-2461] - General, Corrected issue where the Monitoring Service caused the Network Tree to disappear if a device had a RollCall Address 0000:00:00
- * [FUS-2462] - General, Corrected issue where incorrect timestamp caused Recording Service Log Viewer not to display alarms from last 30 minutes
- * [FUS-2464] - General, Corrected issue where Monitoring Service could set device to Unit Lost rather than deleting it
- * [FUS-2465] - General, Corrected issue where Densité Control Service connected to only a single Densité Manager
- * [FUS-2389] - General, Removed the RollCall Multi-Matrix protocol from the Routing Service, only SW-P-08 and NP0017 protocols supported
- * [FUS-2466] – General, Corrected issue where combo box displayed the wrong value
- * [FUS-2469] – General, Fixed crash when loading IQAMD template after deleting cache
- * FUS-2470] – General, Fixed issue where empty Combo Box was not hidden

- * [FUS-241] – General, Fixed issue where webpage was not always displayed in Orbit Client until the editor was resized

Orbit Version 3.0.10

- [FUS-2176] – General, Fixed issue with empty target literal value in event binding
- [FUS-2167] – Multiviewer, Fixed issue where network interruption to Multiviewer caused Orbit to show connection fault
- [FUS-2135] – General, Fixed issue with copied Behaviours and Bindings not showing as linked
- [FUS-2130] – IP Configuration, Improved clearing and assigning multiple flow parameters for the IFM-2T
- [FUS-2096] – Multiviewer, Add support for Connected IQIMV project
- [FUS-2081] – MapView, Improved MapView link state display when stopping/starting the MapView service
- [FUS-2066] – General, Improved stability of RollCallv3 plugin
- [FUS-2059] – General, Fixed issue with undo/redo not working in the Global Logic editor
- [FUS-1843] – General, Added support for mouse over color on widgets such as Label
- [FUS-1972] – MapView, Added Globalx components, logic components executed server side
- [FUS-1989] – MapView, Added state change on Rate of Change of values
- [FUS-2041] – Multiviewer, Added support for Ancillary Time Code as a Digital Clock Type
- [FUS-2058] – MapView, Added User Configurable Network View Panel (Logical View)
- [FUS-2073] – MapView, Added Edge widget, widget interconnection lines
- [FUS-2105] – MapView, Added ability to add router panels like components
- [FUS-2112] – MapView, Added Playback Behaviour, Play Audio Alarm on Client Workstation
- [FUS-2173] – MapView, Added the ability to invert alarms
- [FUS-2182] – MapView, Added latched state
- [FUS-2248] – MapView, Added Email service and send Email Behaviour
- [FUS-2089] – MapView, Added support for SW-P-08 to the Routing service
- [FUS-2090] – MapView, Added Cancel button to Router panel
- [FUS-2091] - MapView, Added ability to display port numbers on the router panel buttons
- [FUS-1335] – General, Enable Direct Binding GUI to allow another Behaviour to be targeted
- [FUS-1575] – General, Enable property bind to the Disabled property of a widget
- [FUS-1809] – General, Added ability to browse images in the property binding rules editor
- [FUS-2072] – General, Groupbox supports group functionality, shift + drag drops widget into group, layout can be assigned to the widgets in the Groupbox
- [FUS-2076] – MapView, Renamed Schematic to Screen
- [FUS-2079] – MapView, Added Align options relative to Screen
- [FUS-2095] – MapView, Added an Alarm List widget that provides a Filtered Alarm List & Log File

- [FUS-2097] – MapView, Improved the XY Soft Panel Editor
- [FUS-2102] – General, Added Grass Valley, A Belden Brand License Agreement
- [FUS-2115] – MapView, Enhanced Control screens to support variable addressing
- [FUS-2137] – General, Added ability to set Binding Order. Right click on Binding and edit the execution order
- [FUS-2148] – MapView, Added ability purge stale data from the Monitoring Service, useful to remove stale data about devices that have been removed the system
- [FUS-2150] – MapView, Added ability to open an Orbit soft panel by right clicking on a routing node in the network tree
- [FUS-2111] – General, Added horizontally/vertically locked dragging, hold down L before starting to drag
- [FUS-2153] – General, Restyle of the application, removed the bright theme
- [FUS-2160] – General, Removed IP Multiviewer as Project Type
- [FUS-2164] – General, Sorting Behaviours and Bindings Alphabetically
- [FUS-2197] – General, Improved User Experience when Deleting Permissions
- [FUS-2199] – General, Sorting Permissions Alphabetically
- [FUS-2200] – General, Added ability to change Date to different formats
- [FUS-2245] – MapView, Changed Link Behaviour to use Screen and Monitor instead of Schematic and Screen
- [FUS-1807] – General, Added ability to name 'Virtual Node' in the network tree
- [FUS-1987] – MapView, Added a Combine Behaviour to stitch together the output from several Behaviours
- [FUS-2001] – General, Fixed issue where network tree was not refreshing and showing new devices added to IP Proxy
- [FUS-2005] – MapView, Fixed memory issues with MapView plugin on large systems
- [FUS-2007] – MapView, Fixed memory leak in MapView service
- [FUS-2008] – General, Fixed issue with expanding/collapsing the Property Grid
- [FUS-2009] – MapView, Fixed issue with MapView service not auto-updating correctly when a project is modified
- [FUS-2053] – MapView, Fixed issue with Monitoring service not handling wildcards at the end of a header
- [FUS-2055] – MapView, Fixed crash in the GSM plugin
- [FUS-2062] – General, Fixed issue with Orbit services not stopping/starting via web config screens
- [FUS-2084] – General, Fixed issue where variable overrides of type Address disappear when set
- [FUS-2094] – Multiviewer, Fixed issue where changing tile properties were not getting reflected on the wall
- [FUS-2098] – General, Fixed issue with Mapped Binding greater then/less than not working with strings with a numerical value
- [FUS-2107] – MapView, Improved using Alt + click to cycle through selected widgets
- [FUS-2109] – IP Configuration, Fixed crash when checking routed flow status

- [FUS-2149] – IP Configurator, Fixed default Audio RTP Port, was 5004, now is 50104
- [FUS-2151] – General, Fixed minor issue with the logical binding GUI
- [FUS-2161] – MapView, Fixed issue with masking unit/cells created by the Log Field Behaviour
- [FUS-2165] – General, Fixed issue with RollTrak Behaviour being unable to Read or Write value
- [FUS-2169] – MapView, Fixed issue with MbyE showing incorrect state when using link state and the states are within a component
- [FUS-2174] – General, Changed Install Point to Grass Valley
- [FUS-2177] – General, Changed Webpage Links to point to Grass Valley
- [FUS-2178] – Multiviewer, Fixed issue with Multiviewer Download Logs is not working
- [FUS-2179] – IP Configuration, Fixed issue with assign multicast to an individual flow not working
- [FUS-2180] – IP Configuration, Updated Styling
- [FUS-2183] – Fixed issue with property bound component path not working when the screen is opened in run mode
- [FUS-2184] – MapView, Fixed issue with Get/Set SNMP Behaviour crashing if invalid IP address used
- [FUS-2186] – General, Fixed issues with configuring new permissions
- [FUS-2187] – General, Fixed issue where non-admin role can add and delete permissions
- [FUS-2191] – General, Fixed issue where user without Edit Schematic permissions could modify the Theme
- [FUS-2201] – General, Fixed crash when changing tools options links
- [FUS-2203] – MapView, Added default Theme file to Control and Monitoring project
- [FUS-2204] – MapView, Fixed issue where Image Button mouse over was not working when placed behind a Label
- [FUS-2205] – General, Fixed double prompt for save when closing Orbit and the project has been modified
- [FUS-2207] – MapView, Correct issue where background color was lost if the mouse over color is transparent
- [FUS-2208] – MapView, Fixed issue where after updating a Component the background turns black on screen
- [FUS-2241] – MapView, Fixed issue with Monitoring Service not handling log fields on the client domain from a remote pc
- [FUS-2242] – MapView, Fixed issue with incorrect timestamps for monitoring service data
- [FUS-2243] – General, Fixed issue where renaming an open file caused subsequent changed to the file to be lost
- [FUS-2244] – General, Fixed issue with clean shutdown of Orbit Config service
- [FUS-2245] – General, Changed naming of schematic to screen in the Link Behaviour
- [FUS-2246] – MapView, Fixed issue where adding a Lock Behaviour to Button creates unnamed Behaviour
- [FUS-2247] – MapView, Fixed issue where cannot unlock Screen as Button containing a Lock Behaviour is not excluded from lock

- [FUS-2251] – MapView, Fixed issue where it is not possible to copy a Widget out of a Group
- [FUS-2252] – General, Added ability to select network interface in Orbit Services to limit traffic to desired interfaces
- [FUS-2256] – General, Corrected filtering in project file select dialog
- [FUS-2262] – General, Corrected bug causing horizontal or vertical lines to lose their edge thickness
- [FUS-2263] – Multiviewer, Fixed issue where Load Control screen was added multiple time to context menu
- [FUS-2266] – General, Control screen styling improvements
- [FUS-2269] – General, Fixed issue where a lost RollCall connection was not restored
- [FUS-2272] – MapView, Enabled GSM and Densité plugins to dynamically handle iControl server re-configuration
- [FUS-2278] – General, Fixed incorrect message when cancelling a project pull
- [FUS-2284] – MapView, Fixed a bug where ctrl+s when in run mode causes link states to go grey
- [FUS-2288] – General, Fixed issues with Polygon Widget not drawing correctly
- [FUS-2291] – General, Fixed issue with Service status not showing correctly in Internet Explorer
- [FUS-2292] – General, Updated license files for Open Source software
- [FUS-2294] – General, Added maximise and minimize buttons to the pop-up windows
- [FUS-2295] – General, Removed iControl settings from the Monitoring Service, Densité and GSM Behaviours should be used instead
- [FUS-2297] – MapView, Fixed crash when double clicking binding in the Global Logic editor whilst in run mode
- [FUS-2301] – Multiviewer, Fixed issue where refreshing log data caused the Multiviewer on line indicator to turn yellow
- [FUS-2307] – MapView, Fixed issue where the link state was not correct when including Behaviours on a Component using variables
- [FUS-2308] – MapView, Fixed crash when deleting iControl settings a closing a running screen containing GSM alarms
- [FUS-2313] – Multiviewer, Fixed issue with selecting layouts in the Wall editor
- [FUS-2322] – MapView, Allow Variable dialog boxes to import/export values to a file
- [FUS-2324] – MapView, Revert selected colors on cancel when selecting colors for link status
- [FUS-2323] – MapView, Corrected case where variable overrides on Logic files inside a GlobalX file were lost on save
- [FUS-2329] – Multiviewer, Corrected issue where an IQIMV Connect Project sometimes pulls from the wrong Multiviewer
- [FUS-2327] – MapView, Fixed a crash when loading logic files that contain themselves
- [FUS-2337] – MapView, Fixed issue with Custom Bindings to loading when inside GlobalX files
- [FUS-2338] – IP Configuration, Corrected issue where source flow is shown as not assigned when RTP source port is empty
- [FUS-2240] – MapView, Allow variable values to be shown during run mode

- [FUS-2341] – MapView, Fix issue where reloading a component does not reset variable overrides
- [FUS-2250] – General, Set default RollCall addresses for services

Orbit Version 2.5.17

- [FUS-2165] – General, Fixed issue with RollTrack set and get failing to work

Orbit Version 2.5.17

- [FUS-2080] – Multiviewer, Fixed crash when opening an empty Wall file
- [FUS-2084] – General, Fixed bug where component variable overrides of type Address disappear when set
- [FUS-2083] – General, Stability improvements for soft XY Panel
- [FUS-2132] – Multiviewer, Fixed issue where deleting wall from project did not correctly remove wall from Project

Orbit Version 2.5.13

- [FUS-2075] – General, Fixed project push failure on machines with Dell encryption software

Orbit Version 2.5.12

- [FUS-1841] – General, Added ability to delete Behaviour/Binding using the Delete key
- [FUS-1870] – IP Configurator, Added Device Proxy export
- [FUS-1961] – IP Configurator, Show device MAC address
- [FUS-1963] – Multiviewer, Added default portrait grid templates
- [FUS-1900] – Multiviewer, Allow Tally Lamp shape to set in Theme Editor
- [FUS-696] – General, Added SNMP Behaviour
- [FUS-701] – General, Added control of MV Flex Multiviewers
- [FUS-1854] – General, Added support for animated GIFs
- [FUS-1960] – General, Added String Binding for string manipulation
- [FUS-657] – General, Add support for mouse wheel to scroll schematic/walls
- [FUS-2010] – General, Add support for UTC offset for date
- [FUS-1974] – MapView, Add support for accented characters in schematic link files
- [FUS-1976] – Multiviewer, Allow background of Audio Bars to be configured
- [FUS-2013] – IP Configurator, Added SDP file export
- [FUS-2020] – MapView, Added GSM plugin to enable GSM Behaviours to be used
- [FUS-2027] – MapView, Identified and fixed memory leak
- [FUS-2040] – General, Allow copy of Log Field value to clipboard
- [FUS-2051] – MapView, Fixed issue with Mask Until Green status failing when service is restarted
- [FUS-2063] – IP Configurator, Corrected size of IP project icon

- [FUS-2055] – General, Fixed crash in GSM plugin
- [FUS-2056] – General, Fixed crash in RollCallv3 plugin

Orbit Version 2.4.23

- [FUS-1253] – Multiviewer, Apply changes to default style to Auto Tiles
- [FUS-1658] – Multiviewer, Preserve Input and TSL addresses when adding Tile to Wall
- [FUS-1781] – General, Added Chart widget
- [FUS-1790] – Multiviewer, Corrected occasional slow application of alarm masks
- [FUS-1811] – General, Fixed crash when closing a Control Screen while still downloading menus
- [FUS-1767] – IP Configurator, Added Port View to the Routing Status tab
- [FUS-1829] – General, Added support for LDK and UCP licenses
- [FUS-1853] – General, Added Image Button widget
- [FUS-1864] – IP Configurator, Added display of switch port information derived from LLDP
- [FUS-1881] – IP Configurator, Indicate TPG active in Routing Status tab
- [FUS-1887] – MapView, Added support for C&M Projects and backend services
- [FUS-1876] – IP Configurator, Allow user to select Source/Destination first in Routing Status tab
- [FUS-1707] – Multiviewer, Removed alarm support for SMPTE2010, this is an indicator, not an alarm
- [FUS-1880] – General, Added support for control of Grass Valley Densité devices
- [FUS-1890] – General, Apply Grass Valley branding
- [FUS-1917] – General, Added support for handling of Grass Valley GSM alarms
- [FUS-1932] – IP Configurator, Correct filtering on Port tab
- [FUS-1944] – General, Improve performance of decode of H.264 streams

Orbit Version 2.2.15

- [FUS-1800] – Multiviewer, Fixed occasional case where wrong files were updated during project push

Orbit Version 2.2.14

- [FUS-1680] – Multiviewer, added Video Aspect Ratio Enable mode that disables video aspect ratio limits. Video is stretched to fill the video widget
- [FUS-1084] – Multiviewer, Support crop and zoom
- [FUS-1617] – Multiviewer, Update Multiviewer Properties automatically if RollCall address and domain if changed in RollCall template
- [FUS-1672] – Multiviewer, Correct storage of additional peer and multicast settings
- [FUS-1613] – General, Stability improvements
- [FUS-1657] – Multiviewer, Correct context menu “New Style” operation
- [FUS-1600] – IP Configurator, Remember column widths

Orbit Version 2.2.9

- [FUS-1555] – IP Configurator, Improve duplicate multicast scan mechanism
- [FUS-1556] – IP Configurator, Enable assignment of multicast address to individual spigot
- [FUS-1561] – General, Improving RollCall template loading time
- [FUS-1564] – General, Correct issues rendering RollCall templates from IQ Modular cards
- [FUS-1570] – General, Correct issue where Monitoring Service reports no Log Server
- [FUS-1571] – General, Correct issue with Monitoring Service interaction with dual Log Servers
- [FUS-1574] – General, Correct Monitoring Service incorrectly reporting WARN: No Data when connecting to Log Server
- [FUS-1591] – Multiviewer, Correct Clock Widget hour offset handling
- [FUS-1592] – Multiviewer, Correct download log feature operation with large files
- [FUS-1602] – Multiviewer, Correct reading of Logical Binding configuration
- [FUS-1583] – General, Correct reloading of Multiviewer template after reboot
- [FUS-1455] – Multiviewer, Add TSL Addressing to Assign Inputs
- [FUS-1618] – General, Improve resilience to network configuration changes
- [FUS-1590] – Multiviewer, Correct issue where Multiviewers could pick up TSL data intended for another Multiviewer, caused if Multiviewers were on the same RollCall+ Domain
- [FUS-1599] – General, Correct Unit Loss not being detected after a Map reconnection
- [FUS-1605] – IP Configurator, corrected Spigot allocation with Linked Spigot mode
- [FUS-1608] – General, corrected issue where Property Grid became unresponsive
- [FUS-1622] – Multiviewer, Changed Wall Designer to use HTML colour codes to match Tile editor
- [FUS-1630] – IP Configurator, Correct MAC multicast address calculation
- [FUS-78] – General, Implemented Toggle Button
- [FUS-697] – General, Added Command Line Behaviour
- [FUS-699] – General, Added Ping Behaviour
- [FUS-1482] – General, Added Event binding to allow events to be generated from behaviour value changes
- [FUS-1588] – General, Added Push to Make Button
- [FUS-1645] – Multiviewer, Corrected issue where Hours could not be set in Timer Widget
- FUS-1061] – IP Configurator, Added ability to transfer settings from one device to another
- [FUS-1649] – Multiviewer, Corrected LTC binding to Clock Widget
- [FUS-1647] – Multiviewer, Added new default tiles when creating new Multiviewer Project
- [FUS-1653] – IP Configurator, Handle off line devices when assigning port numbers
- [FUS-1626] – IP Configurator, Simplify flow enable/disable and use SMPTE-2110 names

Orbit Version 2.1.25

- [FUS-1552] – Multiviewer, Add support for 720p60 in Video Input Format Change alarm

- [FUS-1563] – Multiviewer, Correct inconsistent widget sizes between 2.0 and 2.1 releases
- [FUS-1471] – General, App data path changed to SAM/Orbit
- [FUS-1490] – General, Improvement to rendering of RollCallv3 Templates
- [FUS-1348] – General, Correct issue with RollCallv3 drop down box
- [FUS-1402] – Multiviewer, Correct copy and paste of Video Widget, behaviours were not copied
- [FUS-1412] – General, Handle hidden entries on RollCallv3 Templates
- [FUS-1423] – General, Sync behaviour name in Property Grid with Behaviour Editor
- [FUS-1445] – General, Fix crash if Orbit is closed when RollCall IP connection has been lost
- [FUS-1451] – General, Enable cut and paste from Template to Schematic
- [FUS-1458] – General, Improve combo box display on RollCallv3 Templates
- [FUS-1464] – General, Correct error that could cause RollCallv3 Plugin to crash
- [FUS-1470] – IP Configurator, Fix issue with Find Source option on DstFlows tab
- [FUS-1472] – General, Refresh recent project list on project close
- [FUS-1473] – General, Correct crash when deleting a newly added style
- [FUS-1479] – General, Set default network cache size to 250ms
- [FUS-1492] – General, Correct overlapping names on Theme Editor
- [FUS-1497] – General, Provide a clearer distinction between enabled and disabled controls
- [FUS-1528] – General, Added RollCallv3 Template caching for programmable
- [FUS-1530] – General, Added ability to set a colour as a variable
- [FUS-1462] – General, Correct display of IQMIX configuration in RollCallv3 Template
- [FUS-1509] – General, Use Escape to deselect currently selected item on schematic/tile, use right click to deselect selected widget when adding to a schematic/tile
- [FUS-1516] – General, Corrected crash when opening a tile with a writeable RollCall+ behaviour
- [FUS-1517] – Multiviewer, Decrement wall count when deleting walls
- [FUS-1532] – General, Allow component variables to be exposed to the Wall Editor
- [FUS-1542] – Multiviewer, Support 1280x720 outputs

Orbit Version 2.1.20

- [FUS-1450] – General, Correct crash when adding the ComboBox widget to a schematic
- [FUS-1452] – General, Correct display of Label widget in the Theme editor
- [FUS-1454] – Multiviewer, Disable Fill Grid/Replicate when in fine edit mode on the Wall Designer

Orbit Version 2.1.17

- [FUS-1425] – Multiviewer, Align widget selection between Wall and Tile editors
- [FUS-1443] – Multiviewer, Correct handling of aspect ratio property in the Wall Designer
- [FUS-1446] – General, Update font on Label Widget when changing setting in property grid
- [FUS-1448] – Multiviewer, Correct tile drag operation when in fine edit mode of Wall Designer

- [FUS-1449] – Multiviewer, Correct tile selection in fine edit mode of Wall Designer

Orbit Version 2.1.15

- [FUS-1307] – Multiviewer, Support individual input selection for 4k input. Allow 4k input to be assigned to a custom tile
- [FUS-1164] – Multiviewer, Tile can be placed into run mode without MV-800-DT licence. License required to view the Wall in run mode
- [FUS-1293] – Multiviewer, Extended Logical Binding to enable more complex logical expressions to be defined
- [FUS-1254] – Multiviewer, Correct horizontal alignment of Video Widget caption
- [FUS-1329] – Multiviewer, Application name changed to Orbit
- [FUS-1297] – Multiviewer, Added graphical editor for Behaviours and Bindings
- [FUS-1294] – Multiviewer, Allow style to be set for clock on auto tile
- [FUS-1238] – Multiviewer, Fixed issue with RollCall Template combo boxes not updating from menu line back-channel entries
- [FUS-1322] – Multiviewer, Fixed issue with RollCall timers not updating in Orbit run mode
- [FUS-1194] – IP Configurator, Added ability to save log to a file
- [FUS-1289] – Multiviewer, Allow name to be set when creating a custom tile from auto tile
- [FUS-1376] – IP Configurator, Added active link status check via ping
- [FUS-1384] – IP Configurator, Added port assignment for spigot marked as 4k linked
- [FUS-1098] – General, Mark User DB file is modified if permissions are changed
- [FUS-1318] – Multiviewer, Correct issue where Timer widget caption could extend beyond caption box
- [FUS-1378] – Multiviewer, Correct issue with Monitoring Service not receiving Log Server updates. Added new log fields to see the connection status with Log Server from the MV-8xx
- [FUS-1403] – Multiviewer, Separated LTC clock from the global system tick, was introducing offset to LTC time and also caused LTC clock to continue running when LTC source was removed
- [FUS-969] – Multiviewer, Added ability to import files from another project
- [FUS-1316] – IP Configurator, Added ability to make a Device to Device route
- [FUS-1393] – General, Added layouts to a group of widgets. Dropping widget into a group automatically follows the layout selected
- [FUS-1413] – Multiviewer, Corrected issue where Audio Widget could be resized beyond the size of the tile
- [FUS-1414] – Multiviewer, Reduced the minimum size of audio bars
- [FUS-1074] – Multiviewer, limit the number of streams that can be decoded by MV-800-DT to 48
- [FUS-1422] – General, Fixes issues where recent file list on landing page was not rendered correctly

Orbit Version 2.0.24

- [FUS-1284] – Multiviewer, Observe marker bytes for TSL 5.0 over TCP

- [FUS-1317] – IP Configurator, Removed audio matrix display
- [FUS-1315] – IP Configurator, Show network status for Audio XS
- [FUS-1312] – IP Configurator, Improved spreadsheet import to allow flows that are not matched in the spreadsheet to be cleared and import of all settings, not just changed settings
- [FUS-1309] – IP Configurator, Add device protect to prevent devices being purged
- [FUS-1310] – IP Configurator, Add display for spigots tagged as 4K gang
- [FUS-1307] – Multiviewer, Allow inputs in 4K gang to be individually selected
- [FUS-1245] – IP Configurator, Enable assignment of multicast address from the highest address in use
- [FUS-1280] – IP Configurator, Handle IQMIX configuration changes

Orbit Version 2.0.23

- [FUS-1175] – Multiviewer, Added support for displaying closed caption on label widget
- [FUS-1279] – Multiviewer, Closed caption support
- [FUS-992] – IP Configurator, purge individual device
- [FUS-1269] – Refresh recent file list when file is deleted
- [FUS-1271] – IP Configurator, removed Show Flow Types property
- [FUS-1270] – IP Configurator, Corrected search feature
- [FUS-1278] – IP Configurator, Updated look and feel
- [FUS-1264] – Multiviewer, remove start byte check for TSL over UDP, not required by spec.
- [FUS-1260] – IP Configurator, Enable Home button

Orbit Version 2.0.22

- [FUS-1251] – IP Configurator, Improve handling of port assignment within Audio Matrix display

Orbit Version 2.0.21

- [FUS-1249] – Multiviewer, Corrected default properties for Timer in example project

Orbit Version 2.0.20

- [FUS-1246] – IP Configurator, Offline devices hidden when selecting device specific display option
- [FUS-1243] – IP Configurator, Added global option to hide off line devices
- [FUS-1240] – Multiviewer, Added ability to show current date in digital clock
- [FUS-1078] – Multiviewer, Fixed issue where RollCall controlled timers reset on layout change

Orbit Version 2.0.19

- [FUS-1237] – IP Configurator, Added check for duplicate IP addresses
- [FUS-1206] – IP Configurator, Added check for out of subnet source IP addresses

- [FUS-1213] – Multiviewer, Added support for Plura TRP Time, Date and Timecode
- [FUS-1217] – Multiviewer, Default TSL 3.1 tally lamp to off
- [FUS-1216] – Multiviewer, Allow TSL 3.1 tally lamp colour to be selectable, from red, green or yellow

Orbit Version 2.0.18

- [FUS-1199] – IP Configurator, Added import summary column sort
- [FUS-1207] – IP Configurator, Added page up and page down controls to ease working with large systems
- [FUS-1200] – IP Configurator, Fixed issue where setting a destination flow multicast address has no effect
- [FUS-1209] – Corrected issue where MV project pull could fail
- [FUS-1210] – Corrected issue that could prevent buttons on device template from working

Orbit Version 2.0.17

- [FUS-1190] – Corrected index into Behaviour list within Binding Edit dialog

Orbit Version 2.0.16

- [FUS-1179] – Improve configuration import for IP Configuration
- [FUS-1184] – Correct issues that prevented Wall files being correctly updated when Multiviewer properties were modified
- [FUS-1185] – Enable UMD Tally lamps to be styled in Theme Editor
- [FUS-1187] – Add property to enable/disable Video Caption

Orbit Version 2.0.15

- [FUS-1024] – Update to RollCall+ Quality of Service configuration
- [FUS-1172] – Correct issue with downloading RollCall template from MV-800/MV-805
- [FUS-1173] – Correct issue with selecting style for a group selection of tiles
- [FUS-1174] – Correct issue with auto acknowledgement for OP42, OP47 and SMPTE2010 alarms
- [FUS-1176] – Correct issue with Fusion landing page appearing black over remote desktop connection

Orbit Version 2.0.14

- [FUS-1162] – Enable enum to be used as a property variable

Orbit Version 2.0.13

- [FUS-1056] – Highlight network not present in IP Configurator

Orbit Version 2.0.11

- [FUS-1080] – Enable display of RollCall template from within Fusion
- [FUS-1128] – Added move to front and move to back buttons to Tile Editor
- [FUS-1134] – Correct issue with default properties not being set correctly in edit mode
- [FUS-1143] – Add configuration for TRP plugin
- [FUS-1151] – Enable logging of operation within IP Configuration to file

Orbit Version 2.0.10

- [FUS-1142] – Correct bug in path handling for configuration files

Orbit Version 2.0.9

- [FUS-1124] - Support Grids of up to 10x10 on Wall Designer
- [FUS-1126] - Change application name from Fusion to Fusion Client. Note. Old registry settings are not retained. Licensing settings and recently opened projects will be reset.
- [FUS-1141] – Correct bug when setting image for tile/schematic background

Orbit Version 2.0.8

- [FUS-1122] – Network Configurator, key on flow type when importing source flows
- [FUS-1110] – Wall Designer Fill/Grid Replicate fix to work on all outputs
- [FUS-1102] – Network Configurator, fix to reset filtering when network is rebuilt

Orbit Version 2.0.7

- [FUS-1106] – Fix display of spigot list

Orbit Version 2.0.6

- [FUS-1035] – Improve IP Adapter handling in MV-805 Template
- [FUS-1104] – Correct black Audio Bars in Theme Editor and when Placed on Tile
- [FUS-1117] – Correct exception when quickly opening and closing a project
- [FUS-1118] – Update Main Landing Page Recent Project List when closing a project
- [FUS-1086] - Added Source Stream Configuration to MV-805 Template

Orbit Version 2.0.5

- [FUS-768] – Correct problem with selecting audio bars when expanded to show 16 bars
- [FUS-989] – Added protection to Network Configurator to prevent accidental configuration changes
- [FUS-1043] – Add tool to check for duplicated IP stream parameters

Orbit Version 2.0.4

- [FUS-1031] – Corrected case where pushing a new project to a Multiviewer resulted in output loss
- [FUS-1095] – Fixed crash in Fusion when network state changed and no project was open
- [FUS-1097] – Fixed crash in Fusion when trying to route 1:ALL in Network Configurator

Orbit Version 2.0.3

- [FUS-980] – Improved efficiency of IP Configurator logging
- [FUS-1077] – Update default tiles with TSL variables
- [FUS-1088] – Allow negative offset to be set for clocks
- [FUS-1089] – Remove white border around audio meters
- [FUS-1091] – UMD should ignore leading and trailing spaces on TSL text tally

Orbit Version 2.0.2

- [FUS-368] – Persist custom colours between sessions
- [FUS-487] – Add align through centre
- [FUS-989] – Provide user roles and permissions to limit user changes in IP Configurator
- [FUS-1048] – RollCall cache clear menus were swapped
- [FUS-1051] – Correct issue that could result in incorrect display of units in the Network View
- [FUS-1053] – Correct issue that caused Fusion to hang when connecting to non existent video stream
- [FUS-1058] – Sync border tallies when flashing
- [FUS-1059] – Fix issue where alarm tally is clipped when displayed on small tile
- [FUS-1060] – Improve performance when settings flows across multiple IQMIX devices
- [FUS-1063] – Add ability to disable source name tally on Audio widget
- [FUS-1064] – Add ability to set the background colour in the Theme editor
- [FUS-1065] – Correct configuration of Audio widget on the Wall designer
- [FUS-1066] – Correct issue where widget theme could not be set to default if name had been changed

Orbit Version 2.0.1

- [FUS-407] – Add double click to edit label name
- [FUS-1011] – Add licensing to IP Configurator
- [FUS-1050] – Added RollCall+ type advertisement and checking
- [FUS-1052] – Fixed audio bar display in Fusion

Orbit Version 1.2.13

- [FUS-740] – Insert units into the Network Tree in the same format as Control Panel

- [FUS-838] – Correct display of RollCall templates
- [FUS-904] – Remove incorrect message regarding TSL version changing, reconfigure bindings
- [FUS-1015] – Prevent extended property items collapsing after setting property
- [FUS-1029] – IP Configurator UI improvements
- [FUS-1032] – Correct IP Configurator crash when purging lost devices
- [FUS-1033] – Correct issue where info of purged device is left over in IP Configurator
- [FUS-1037] – Correct issue where closing RollCall+ connections causes Fusion to hang
- [FUS-1039] – Display properties in Bindings Dialog in alphabetical order
- [FUS-1040] – Correct # field evaluation on MV-805
- [FUS-1041] – Correct log field status evaluation on MV-805
- [FUS-1042] – Improvement to RollCall+ library to restrict discovery between different unit types

Orbit Version 1.2.12

- [FUS-1008] – Correct an issue where adding a new layout to a Multiviewer Project did not change the layout select button focus
- [FUS-1012] – Corrected an issue where Video Black and Video Freeze alarm thresholds could not be set correctly
- [FUS-1019] – Fixed issue where labels with transparent backgrounds do not clear old values when updating
- [FUS-1028] – Change to IP Routing QoS to use monotonic clock

Orbit Version 1.2.11

- [FUS-744] – Added ability to assign default router input to Multiviewer tile
- [FUS-850] – Added ability to display the property grid from the menu View->Windows
- [FUS-970] – Improved visibility of Video Widget black bars while editing
- [FUS-998] – Fixed occasional crash when exiting the Monitor Units window
- [FUS-1001] – Fixed rare crash with multiple layouts
- [FUS-1009] – Fixed issue with the router service that prevented MV-805 from displaying SWP-08 source tally names

Orbit Version 1.2.10

- [FUS-847] – Corrected bug where child windows were not closed when Fusion is closed
- [FUS-997] – Corrected bug which prevented the MV-805 from running as a service

Orbit Version 1.2.9

- [FUS-991] – Component variables can now be set using the same UI as properties
- [FUS-996] – Corrected bug which prevented the MV-805 from displaying video

Orbit Version 1.2.8

- [FUS-687] – Enhance the slider control with styling options
- [FUS-955] – Corrected bug where destination ports were not cleared after configuring IQMIX port from Source to Destination
- [FUS-971] – Add Aspect Ratio Lock for Widget Size Changes
- [FUS-975] – Network interface white list verified against available network interfaces
- [FUS-976] – Correct bug where VideoWidget wouldn't play video file from Resources directory
- [FUS-979] – Sort IP address in Network Monitor in correct numerical order
- [FUS-982] – Assign names to Multiviewer dialog boxes
- [FUS-994] – Correct bug that broke H.264 streaming decoder
- [FUS-995] – Fix unresponsive app bug caused by side effect in Network Monitor performance improvements

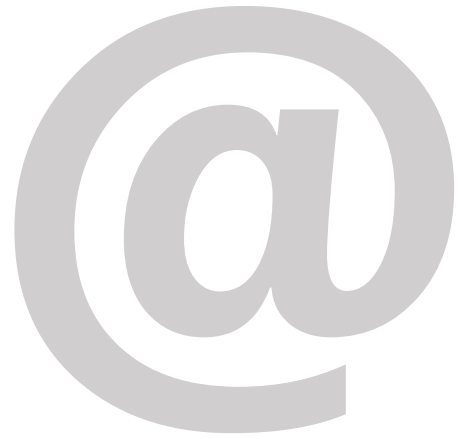
Orbit Version 1.2.7

- [FUS-829] – Allow shift and left click drag to select tiles on Wall
- [FUS-984] – Set the flow type to "No Flow" when clearing multicast settings
- [FUS-986] – QoS changes to allow DDS to release memory following routing request
- [FUS-987] – Correct bug that prevented "Show Spigots" and "Show Flows" from displaying information

Known Issues and Limitations

The following is a list of known issues and limitations associated with Orbit. The star (*) symbol indicated a new issue in Orbit Version 3.1.11.

- * [UCCM-251] - Audio Shuffle Icon not Displayed in Bulk Routing Panel: This issue occurs when connecting to the GV Convergent Router Controller and an audio shuffle is made on composite levels. This issue requires version GV Convergent version 2.2 to shuffle correctly with composite levels



Contact US

Grass Valley Technical Support

For technical assistance, contact our international support center, at 1-800-547-8949 (US and Canada) or +1-530-478-4148.

To obtain a local phone number for the support center nearest you, consult the Contact Us section of Grass Valley's website (www.grassvalley.com).

An online form for e-mail contact is also available from the website.

Corporate Head Office

Grass Valley
3499 Douglas-B.-Floreni
St-Laurent, Quebec H4S 2C6
Canada

Telephone: +1 514 333 1772

Fax: +1 514 333 9828

www.grassvalley.com