

M-Series NetCentral Monitoring Setup Instructions

This document describes how to set up the M-Series iVDR for monitoring with NetCentral Remote Monitoring Software.

For information about the overall NetCentral system, read the *NetCentral User Guide*.

Table of Contents

<i>About the iVDR StatusPane and StatusBar</i>	1
<i>Setting up M-Series iVDR NetCentral monitoring</i>	2
<i>Installation requirements</i>	2
<i>Installation overview</i>	2
<i>Unlock NetCentral agent software on the M-Series iVDR</i>	3
<i>Install the M-Series device provider on the NetCentral Server</i>	3
<i>Add the iVDR to the NetCentral Manager tree view</i>	4
<i>What if NetCentral cannot enable iVDR SNMP messages?</i>	6
<i>Monitoring the iVDR with NetCentral</i>	7
<i>For more information</i>	7

About the iVDR StatusPane and StatusBar

The StatusBar and StatusPane are part of the iVDR AppCenter, the main disk recorder control application on the iVDR. The StatusBar and Status Pane are used for local monitoring of the iVDR. The StatusBar displays system and applications messages during operation. The StatusPane can be opened to view more detailed system messages including information, warning, and error messages.

The functionality of these tools is limited to the local M-Series iVDR only and is not SNMP based, therefore, you cannot monitor the iVDR remotely with NetCentral Monitoring software.

As part of this setup procedure, you'll install NetCentral SNMP software on the iVDR to enable NetCentral monitoring. The more powerful NetCentral manager monitoring supersedes the iVDR StatusPane monitoring. However, the StatusPane continues to function on iVDR so it is available for basic status information at the local machine.

Setting up M-Series iVDR NetCentral monitoring

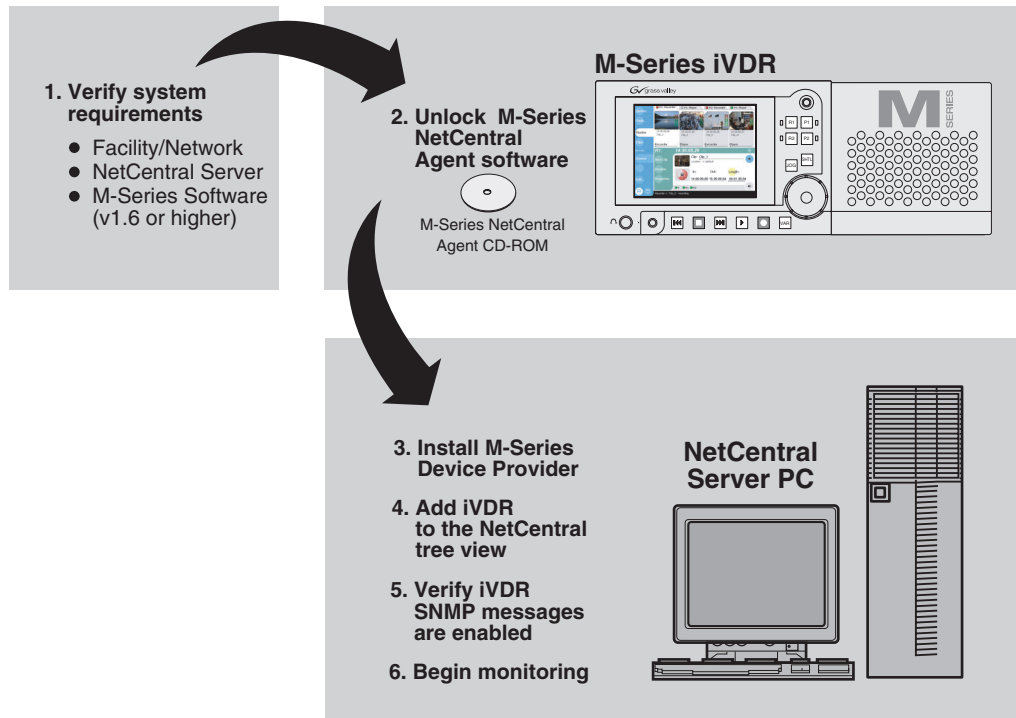
This section provides the procedures for setting up the M-Series iVDR for monitoring with NetCentral Manager.

Installation requirements

Before you begin installation, verify the following requirements:

- You have obtained an M-Series NetCentral Agent unlock program (One for each iVDR you monitor)
- M-Series iVDR software version 1.6.9 or higher is installed on the iVDR
- NetCentral manager software must be installed and operating correctly on the NetCentral server. Refer to the *NetCentral User Guide*.
- The NetCentral server and the M-Series iVDR must be on the network and be able to communicate with one another.

Installation overview



Unlock NetCentral agent software on the M-Series iVDR

This procedure describes how to unlock the NetCentral SNMP agent software installed on the iVDR using the *M-Series iVDR NetCentral Agent CD-ROM*.

To unlock the NetCentral SNMP agent on the iVDR:

1. If needed, minimize AppCenter by selecting **System** in the AppCenter toolbar, then choose **Minimize**.
2. Insert the *M-Series iVDR NetCentral Agent CD-ROM* in the CD-ROM drive.
3. Browse the CD-ROM contents and run *M-Series_NetCentralAgent.exe* to start the installation program.
4. Click **Next** in the install wizard Welcome page, then follow on-screen instructions.
5. When installation is complete, proceed to [“Install the M-Series device provider on the NetCentral Server”](#).

Install the M-Series device provider on the NetCentral Server

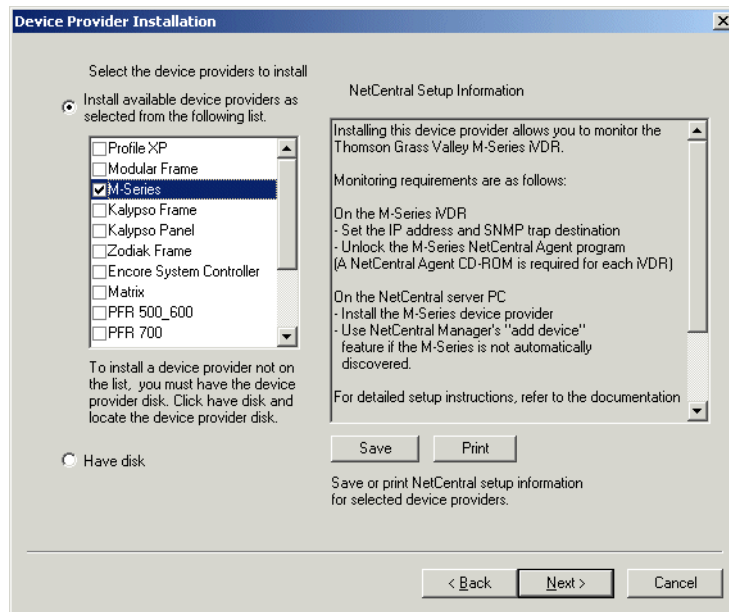
This procedure describes how to install the M-Series device provider software on the NetCentral Server.

NOTE: Before installing any device providers, ensure that you have re-started the NetCentral server PC at least once since installing NetCentral Manager software. Otherwise, the manager software will not be completely registered and the device provider installation will abort when it cannot detect the manager as a pre-requisite.

To install the M-Series device provider on the NetCentral server:

1. At the NetCentral server, log on to NetCentral manager with administrator-level access rights. (Tip: In NetCentral, select **File | Logon**)
2. In NetCentral manager, click **File | Add | Device Provider**.
3. Accept the license agreement, then select **Next**.

The Device Provider Installation dialog box opens.



4. Select **M-Series** in the device provider list, then click **Next**.

NOTE: *If you have an updated M-Series Device Provider, select the **Have Disk** option, then click **Next** and browse to the .ncp file.*

5. When installation is complete, proceed to [“Add the iVDR to the NetCentral Manager tree view”](#).

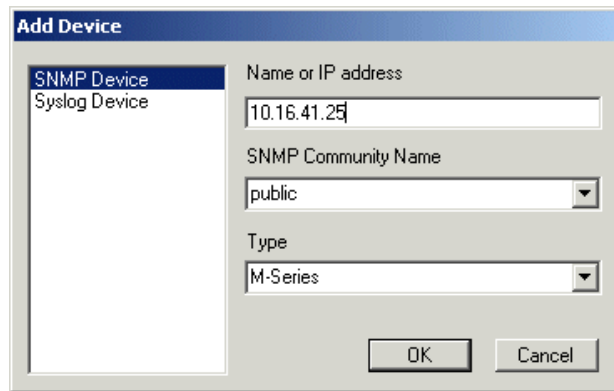
Add the iVDR to the NetCentral Manager tree view

Use the following procedure to add the iVDR to the NetCentral manager tree view and automatically configure SNMP trap destination on the iVDR. Setting the SNMP trap destination ensures that iVDR status messages are sent to the NetCentral server.

To add the iVDR to the NetCentral tree view:

1. If you have not already done so, log on to NetCentral manager with administrator-level access rights.
2. In NetCentral, click **File | Add | Device**.

The Add Device dialog box opens.



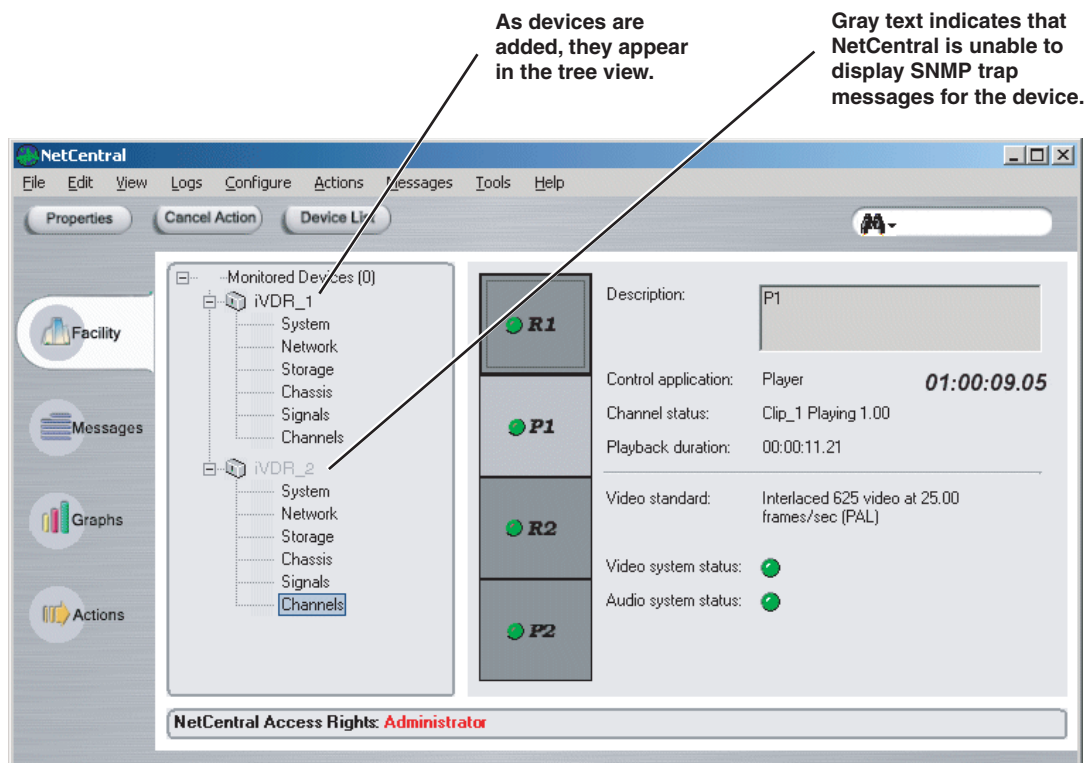
3. Enter the iVDR IP address.
4. Select **M-Series** in the Type drop-down list, then click **OK**.

NetCentral Manager attempts to communicate with the iVDR. When contact is made, the iVDR is added to the NetCentral tree view and NetCentral automatically sets the SNMP trap destination address on the iVDR. This may take a few moments.

5. Verify that iVDR message reporting is 'enabled' by observing the iVDR icon in the tree view.

The label text changes from gray to black as shown in the following figure.

NOTE: If messages are not enabled for the iVDR, refer to [“What if NetCentral cannot enable iVDR SNMP messages?”](#) on page 6.



6. Proceed to [“Monitoring the iVDR with NetCentral” on page 7.](#)

What if NetCentral cannot enable iVDR SNMP messages?

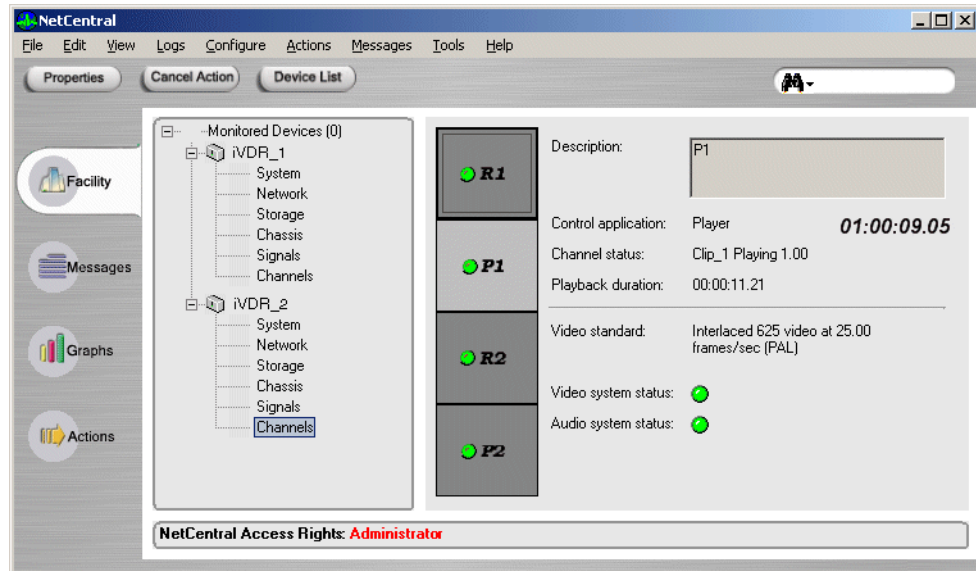
If message reporting is not automatically enabled, there may be a problem with the SNMP configuration settings on the iVDR. Use the following procedure to check and configure iVDR SNMP settings. You'll need the IP address or host name of the NetCentral server PC.

To check SNMP settings on the iVDR:

1. Connect a mouse and keyboard to the iVDR, then restart Windows.
2. If needed, minimize AppCenter by selecting **System** in the AppCenter toolbar, then choosing **Minimize**.
3. In Windows, select **Start | Settings | Control Panel**, then open **Administrative Tools**.
4. In the Administrative Tools dialog, open **Services**.
5. Double-click **SNMP Service** to view the properties dialog box.
6. Select the Traps tab.
7. Enter `public` as the community name, then click **Add to list**.
8. Under “Trap destinations”, click **Add**.
9. Enter the IP address or host name of the NetCentral server PC, then click **Add**.
10. Click **OK** to save changes and close.
11. On the NetCentral server, verify the iVDR message reporting status is now ‘enabled’ by observing the iVDR icon in the tree view, then perform one of the following:
 - If the iVDR label text is black, the iVDR message reporting status is ‘enabled’. Proceed to [“Monitoring the iVDR with NetCentral” on page 7.](#)
 - If the iVDR label text is gray, NetCentral is still not able to receive messages from the iVDR. Refer to the troubleshooting information in the *NetCentral User Guide*.

Monitoring the iVDR with NetCentral

After completing the setup procedure, you are ready to monitor the iVDR using NetCentral.



1. In NetCentral, select **Facility**.
2. Expand the NetCentral tree view and locate the iVDR device icon.
3. Expand the iVDR device icon, then select a subsystem to view properties or status of the subsystem.

Subsystem pages are self documenting. Errors displayed in subsystem pages are accompanied by messages containing corrective actions.

- To display error messages, select the iVDR device icon then click **Messages**.

For more information

For more information about NetCentral, how it works, and how to configure and use its features, refer to the *NetCentral User Guide*.

