
PIX:XP Version 1.6.0

Release Notes

Table of Contents

<i>Grass Valley Product Support</i>	2
<i>Introducing PIX:XP</i>	3
<i>What's new in Version 1.6.0?</i>	3
<i>The PIX:XP document set</i>	3
<i>System requirements</i>	4
<i>Software installation</i>	5
<i>Installing PIX:XP on a Profile XP Media Platform</i>	5
<i>Installing PIX:XP on a client PC</i>	5
<i>Obtaining and installing a PIX:XP license</i>	5
<i>Known problems</i>	9



Grass Valley Product Support

To get technical assistance, check on the status of problems, or report new problems, contact Grass Valley Product Support via e-mail, the Web, or by phone or fax.

Web Technical Support

To access support information on the Web, visit the product support Web page on the Grass Valley Web site. You can download software or find solutions to problems by searching our Frequently Asked Questions (FAQ) database.

World Wide Web: <http://www.thomsongrassvalley.com/support/>

Technical Support E-mail Address: gvgtechsupport@thomson.net.

Phone Support

Use the following information to contact product support by phone during business hours. Afterhours phone support is available for warranty and contract customers.

United States	(800) 547-8949 (Toll Free)	France	+33 (1) 34 20 77 77
Latin America	(800) 547-8949 (Toll Free)	Germany	+49 6155 870 606
Eastern Europe	+49 6155 870 606	Greece	+33 (1) 34 20 77 77
Southern Europe	+33 (1) 34 20 77 77	Hong Kong	+852 2531 3058
Middle East	+33 (1) 34 20 77 77	Italy	+39 06 8720351
Australia	+61 3 9721 3737	Netherlands	+31 35 6238421
Belgium	+32 2 3349031	Poland	+49 6155 870 606
Brazil	+55 11 5509 3440	Russia	+49 6155 870 606
Canada	(800) 547-8949 (Toll Free)	Singapore	+656379 1390
China	+86 106615 9450	Spain	+ 34 91 512 03 50
Denmark	+45 45968800	Sweden	+46 87680705
Dubai	+ 971 4 299 64 40	Switzerland	+41 (1) 487 80 02
Finland	+35 9 68284600	UK	+44 870 903 2022

Authorized Support Representative

A local authorized support representative may be available in your country. To locate the support representative for your country, visit the product support Web page on the Grass Valley Web site.

Profile Users Group

You can connect with other Profile XP Media Platform users to ask questions or share advice, tips, and hints. Send e-mail to profile-users@thomson.net to join the community and benefit from the experience of others.

Introducing PIX:XP

PIX:XP, the Profile Image eXchange XP - Image, Audio, and Animation Interchange Tool for the Profile XP Media Platform, introduces the ability to re-purpose your Windows media files as Profile movies for use on your Profile XP Media Platforms. Through simple drag and drop operations, you can create Profile movies based on single or multiple image files. Your Profile movies can also include up to 16 tracks of audio which you add by the same drag and drop process.

What's new in Version 1.6.0?

This version of PIX:XP introduces a number of features to extend your ability to create Profile video clips out of Windows media files. You'll find a full description of each of these features in the PIX:XP online help.

HD Support — PIX:XP now has full support for the creation of 1080i clips at 50Hz or 59.94Hz. The image size for imports is 1920x1088.

Extended WAV Support — PIX:XP now supports Windows Wave files at any sample size and rate. Tracks are resampled to 16 bit, 48 Hz using an interpolated resampling algorithm.

Alpha channels — Alpha channels from TGA, PNG, BMP and GIF can be used to create a monochrome clip that can be routed to a downstream keyer.

Color channels — As well as support for alpha channels, PIX:XP now allows the isolation of one or more color channels.

Auto Slate — PIX:XP AutoSlate enables automatic slate creation through the use of the Profile's movie database. Construct a slate template with graphical elements, colorbars, countdown clocks, timecode counters and meta data variables (such as encoding format, or clip name). These templates can then be attached to existing Profile clips resulting in a digitally generated slate, in the house style, containing all pertinent clip information.

16:9 support — PIX:XP supports the creation of 16:9 SD MPEG clips.

New File Explorer layout — The File Explorer panel now follows the Windows Explorer filesystem hierarchy, rather than presenting a list of mounted drives.

The PIX:XP document set

Please consult the following documents to learn more about this version of PIX:XP.

- **PIX:XP User Guide** — This guide provides an overview of PIX:XP, a tutorial on its use, and a reference section that lists supported platforms, file formats, etc.
- **PIX:XP online help** — Use the online help to learn about all the menu commands and dialog box options, as well as the basic use of the product.
- **PIX:XP Release Notes** — These Release Notes include installation instructions, licensing requirements, and the latest product information.



System requirements

The PIX:XP client must be installed on a client workstation which meets the following requirements:

- Processor: Pentium III
- Network: 100 Base T Ethernet on client, Option 1L card on Profile.
- OS: Windows NT 4.0 with Service Pack 6A
Windows 2000

Note that the client machine must have two network routes to the Profile system:

- The standard Windows network. This allows you to use the Pronet interface to a Profile XP system, which enables remote use of Profile commands.
- The optional Ethernet Video Network on the Profile XP. Depending on the advice of your local system administrator, you may choose to configure the Ethernet switch or hub so that the two Profile XP Ethernet connections on different subnets. This may help to prevent inter-Profile media traffic from congesting the Windows network.

Software installation

PIX:XP Version 1.6.0 must be installed on each of our client PCs and on every Profile XP Media Platform that will receive the Profile movies. Once the PIX:XP software is installed, you must obtain and install a license for each of your client PCs. The following sections describe these procedures.

Installing PIX:XP on a Profile XP Media Platform

To use PIX:XP to create Profile movies on the target Profile XP Media Platform:

1. Ensure that Ethernet Video Networking is correctly installed and configured on the system. Refer to the Profile XP System Guide for complete instructions.
2. Install the PIX:XP software on the target Profile XP Media Platform. You can run *setup.exe* from either the PIX:XP CD-ROM, or from a system that has the downloaded software.
3. Choose **Start | Profile Applications | PortServer** to start the application that allows the client PC to send commands to the Profile system. You may choose to put this application in the Startup folder so that it starts automatically.

You do not need to install a license on the Profile XP Media Platform.

Installing PIX:XP on a client PC

To install PIX:XP on a client PC:

1. Install Profile System Software on the client PC using the instructions in the *Profile XP System Software Release Notes*. Be sure to confirm that you are performing a PC installation, not an installation on a Profile XP Media Platform.

NOTE: *You must install Profile System Software on your PC first, then install the PIX:XP software*

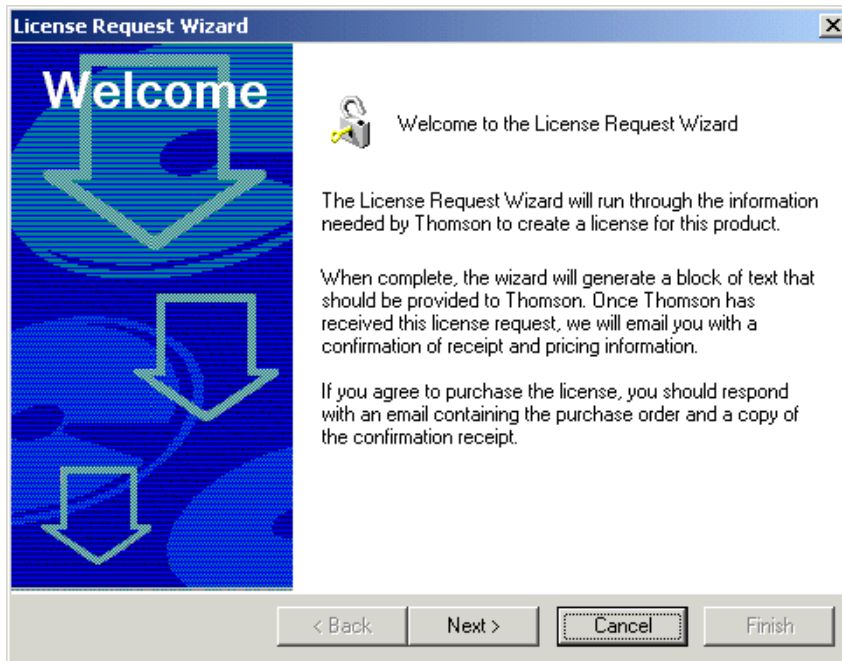
2. Install the PIX:XP software on the system. You can run *setup.exe* from either the PIX:XP CD-ROM, or from a system that has the downloaded software.
3. Click **Next** to continue the installation, then follow the prompts.

You can now use the PIX:XP software to create Profile movies as explained in the *PIX:XP User Guide*. All of your movies will display the Grass Valley logo until you obtain and install a PIX:XP license, as explained in the following section.

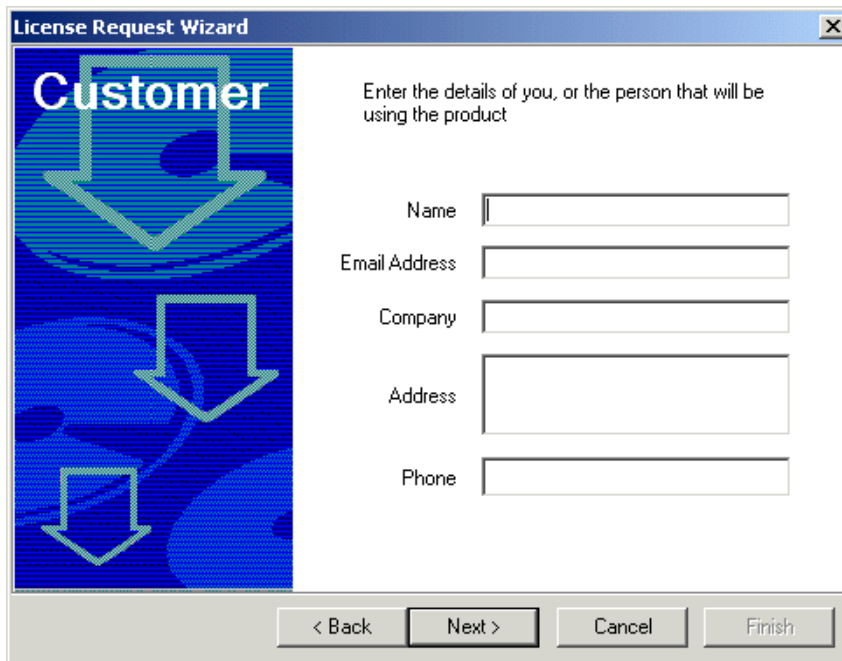
Obtaining and installing a PIX:XP license

PIX:XP software requires a license to allow it to create Profile movies that do not display the Grass Valley logo. You must obtain and install a license for each of the client PCs on which you intend to use the PIX:XP software. To do this:

1. Install the PIX:XP software on the target Profile XP Media Platform and on your client PC as explained in the preceding sections.
2. Start the PIX:XP on the client PC and choose **Connection | Request PIX:XP License**. This starts the License Request Wizard.

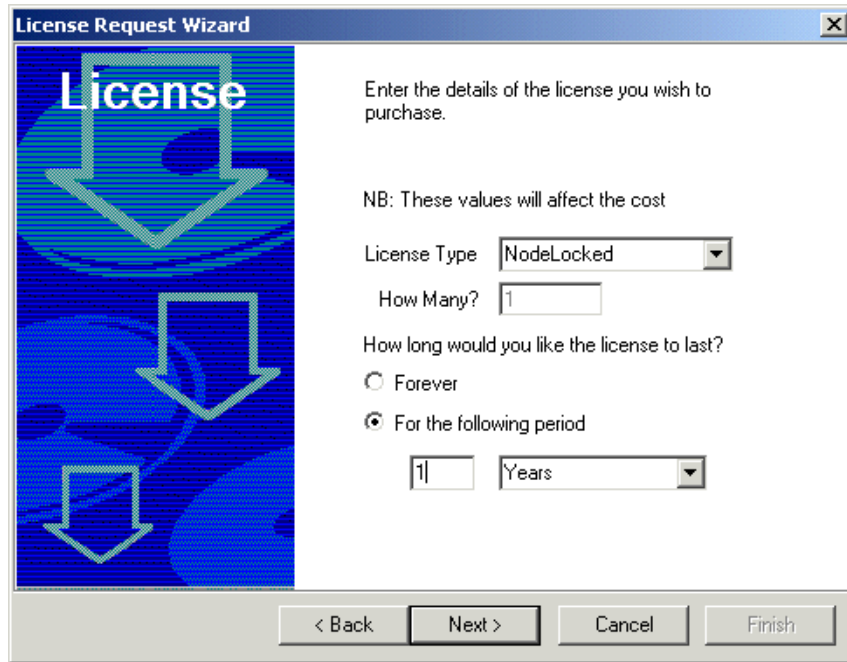


3. Click **Next**, then enter your contact information on the next page

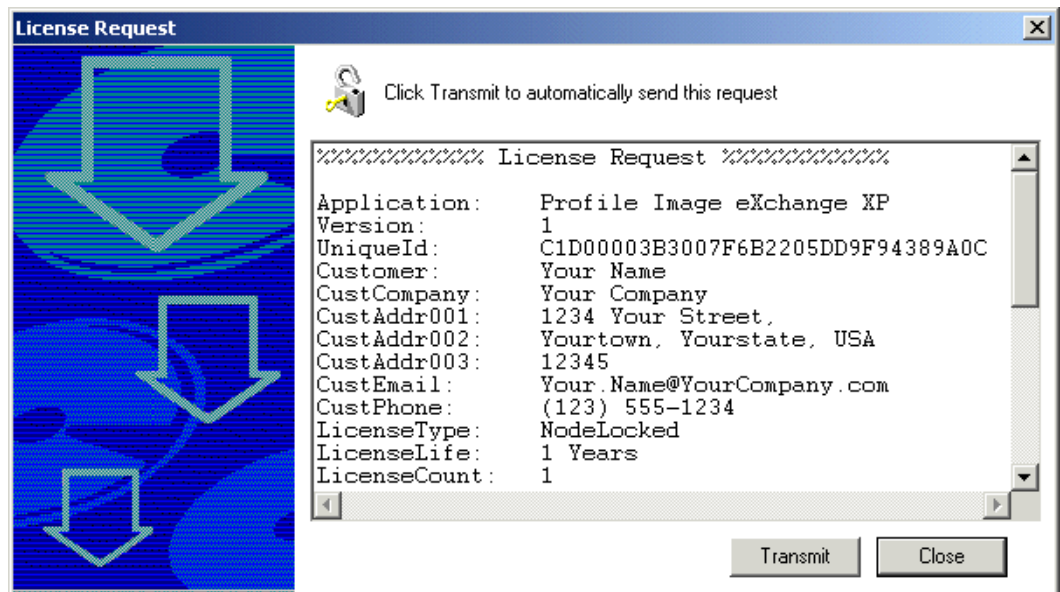


4. After completing the form, click **Next** to complete the Billing and Shipping forms. Select the check box to use the previously entered details, or fill in each form with the appropriate contact information.

5. On the following page, specify the type of license you wish to purchase.
- Select **NodeLocked** to run the PIX:XP software on one client PC only.
 - Select **Floating** if you wish to use a single license on different client PCs at different times. The License Server must be running at all times, and you must use the **File | Change Computer** command to designate which PC is licensed to use the software.
- Be sure to select the desired license duration. In most cases, select **Forever**.



6. Click **Next** to view a summary of your request, including the Unique ID for your system.





-
7. If all the information is correct, send your request to Grass Valley by either:
 - Clicking the Transmit button if the system has e-mail capabilities; or,
 - Selecting all the text in the Licence Request summary, copying it to the clipboard, and pasting it into a text file or the body of an e-mail message. Send the information to gv.license.request@thomson.net.
 8. After a short time (up to five business days), you will receive your purchased license from gv.license.fulfillment@thomson.net. Contact gv.license.support@thomson.net if you don't receive your license.
 9. Start the License Manager by choosing **Start | Programs | GVG Applications | SabreTooth License Manager**.
 10. To install the license, you can either:
 - Drag the e-mail attachment containing the license information into the SabreTooth License Manager window; or,
 - Choose **File | New License** in the SabreTooth License Manager and paste the license string into the New License(s) dialog box. Click **OK** to enable your new license.

Your PIX:XP software should now create Profile movies without the GV logo.

Known problems

The following limitations are present in this PIX:XP Version 1.6.0 release. If you wish to obtain more information about these limitations, please mention the reference numbers that follow the description of each limitation.

- | | |
|------------|--|
| Problem | Animation sequences created in Macromedia Flash MX and saved as <i>.bmp</i> files create black movies when converted with PIX:XP Version 1.6.0. (CR 27110) |
| Workaround | Save the animation as a series of still images in another file format, such as <i>.tif</i> or <i>.jpeg</i> . These formats convert correctly and result in the desired Profile movie. |
| Problem | Converting still sequences into a 625/50 Profile movie sometimes adds extraneous information to the vertical interval of the last frame of the clip. (CR 26905) |
| Workaround | The visible image is correct. If the extraneous information is unacceptable, use a Profile application such as VdrPanel to trim the last frame from the clip. |
| Problem | Using the Go to Clip End button in VdrPanel displays a black frame at the end of the converted clip. (CR 26929) |
| Workaround | The last frame is correct, as can be seen by using the Rewind and Fast Forward buttons to move to the last frame again. Playing the clip at normal speed always displays the frames correctly. |
| Problem | Profile movies created from 32-bit <i>.tga</i> files may display black video. |
| Workaround | Save the file as a <i>.tga</i> with a lower bit depth (16 or 24, for example), or save it in another file format prior to converting it with PIX:XP. |

