
SiteConfig Version 1.4 Release Notes

These release notes contain the most recent information and supersede previous publications, as of 18 November 2010. Check the Grass Valley website at www.grassvalley.com/docs for an updated version that contains additional important information.

Copyright © Grass Valley, Inc. All rights reserved. Printed in the United States of America. Portions of software © 2000 – 2010, Microsoft Corporation. All rights reserved. This document may not be copied in whole or in part, or otherwise reproduced except as specifically permitted under U.S. copyright law, without the prior written consent of Grass Valley, Inc., P.O. Box 59900, Nevada City, California 95959-7900. This product may be covered by one or more U.S. and foreign patents.

Product options and specifications subject to change without notice. The information in this manual is furnished for informational use only, is subject to change without notice, and should not be construed as a commitment by Grass Valley, Inc. Grass Valley, Inc. assumes no responsibility or liability for any errors or inaccuracies that may appear in this publication.

Grass Valley, K2, Aurora, Summit, Dyno, Solo, Infinity, Turbo, Profile, Profile XP, NetCentral, NewsBrowse, NewsEdit, NewsQ, NewsShare, NewsQ Pro, and Media Manager are either registered trademarks or trademarks of Grass Valley, Inc. in the United States and/or other countries. Grass Valley, Inc. products are covered by U.S. and foreign patents, issued and pending. Additional information regarding Grass Valley, Inc. trademarks and other proprietary rights may be found at www.grassvalley.com. Other trademarks and logos used in this document are either registered trademarks or trademarks of the manufacturers or vendors of the associated products, such as Microsoft® Windows® operating system, Windows Media® player, Internet Explorer® internet browser, and SQL Server™. QuickTime and the QuickTime logo are trademarks or registered trademarks of Apple Computer, Inc., used under license therefrom.

Contents

Grass Valley Product Support.....	3
Release Summary.....	5
Release note revisions for this release.....	5
What's new in version 1.4.....	5
Version 1.4.....	5
Changes and features in previous releases.....	6
Version 1.3.....	6
Version 1.2.....	6
Version 1.1.0.425.....	6
Version compatibility.....	7
Compatible Grass Valley platforms and software versions.....	7
Compatible SiteConfig components.....	8
Upgrading SiteConfig.....	10
About installing SiteConfig.....	10
System requirements for SiteConfig control point PC.....	10
Installing/upgrading SiteConfig.....	11
Install prerequisite files on the control point PC.....	12
Upgrading the Discovery Agent.....	12
About the Discovery Agent.....	13
Known Problems.....	15

Grass Valley Product Support

To get technical assistance, check on the status of a question, or to report a new issue, contact Grass Valley Product Support via e-mail, the Web, or by phone or fax.

Web Technical Support

To access support information on the Web, visit the product support Web page on the Grass Valley Web site. You can download software or find solutions to problems.

World Wide Web: <http://www.grassvalley.com/support/>

Technical Support E-mail Address: gvgtechsupport@grassvalley.com

Grass Valley Knowledge Base: <http://grassvalley.novosolutions.net/>

In the Knowledge Base you can search by topic, search by product, or browse the Table of Contents to find Frequently Asked Questions (FAQ).

Telephone Support

Use the following information to contact Product Support by phone.

International Support Centers

Our international support centers are available 24 hours a day, 7 days a week.

Support Center	Toll free	In country
France	+800 80 80 20 20	+33 1 48 25 20 20
United States	+1 800 547 8949	+1 530 478 4148

Authorized Local Support Representative

A local support representative may be available in your country. To locate a support center during normal local business hours, refer to the following list. This list is regularly updated on the website for Grass Valley Product Support

(<http://www.grassvalley.com/support/contact/phone/>)

After-hours local phone support is also available for warranty and contract customers.

Region	Country	Telephone
Asia	China	+86 10 5883 7575
	Hong Kong, Taiwan, Korea, Macau	+852 2531 3058
	Japan	+81 3 6848 5561
	Southeast Asia - Malaysia	+603 7492 3303
	Southeast Asia - Singapore	+65 6379 1313

Region	Country	Telephone
Pacific	India	+91 22 676 10324
	Australia	1 300 721 495
	New Zealand	0800 846 676
	For callers outside Australia or New Zealand	+61 3 8540 3650
Central America, South America	All	+55 11 5509 3440
North America	North America, Mexico, Caribbean	+1 800 547 8949; +1 530 478 4148
Europe	UK, Ireland, Israel	+44 1189 230 499
	Benelux – Netherlands	+31 (0) 35 62 38 421
	Benelux – Belgium	+32 (0) 2 334 90 30
	France	+800 80 80 20 20; +33 1 48 25 20 20
	Germany, Austria, Eastern Europe	+49 6150 104 444
	Belarus, Russia, Tadjikistan, Ukraine, Uzbekistan	+7 495 258 09 20
	Northern Europe	+45 404 72 237
	Southern Europe – Italy	+39 06 87 20 35 28
	Southern Europe – Spain	+34 91 512 03 50
	Middle East, Near East, Africa	Middle East
Near East and Africa		+800 80 80 20 20; +33 1 48 25 20 20

Release Summary

These release notes contain the latest information about SiteConfig software and supersede previous publications. Check the Grass Valley website at www.grassvalley.com/docs for an updated version that contains additional important information. Also refer to K2 documentation and the *SiteConfig User Manual*.

Release note revisions for this release

This release of software has multiple versions of release notes, as follows:

Part number	Description
071-8720-02	Initial release notes for SiteConfig version 1.4 software
071-8720-03	Revisions as follows: <ul style="list-style-type: none">In <i>Compatible SiteConfig components</i> on page 8, replaced references to a specific version number for Discovery Agent with a generic "1.1" version number.Added steps to <i>Upgrading the Discovery Agent</i> on page 12 to use the SiteConfig application to determine the specific version of Discovery Agent required.

What's new in version 1.4

This version of software includes several improvements, in addition to correcting some problems that were present in earlier releases.

Version 1.4

- **Prerequisite files** — SiteConfig supports deployment of prerequisites that are not directly embedded in the product cab. Common prerequisite files are copied into the control point PC by running the "Grass Valley Prerequisite Files" installer. SiteConfig then deploys prerequisites on demand when a product cab indicates the need to do so.
- **Integration with Netcentral** — NetCentral 5.2 provides the ability to import a SiteConfig system description into the NetCentral tree view. For Aurora 7.x devices imported in this way, you can view additional role-based subsystem nodes and receive role-based messages in NetCentral. This feature requires that the Aurora device have PC monitoring software installed.
- Use the following documents with this release:
 - *SiteConfig User Manual* part number 071-8693-02.
 - *SiteConfig Migration Instructions* part number 071-8705-01

Changes and features in previous releases

The following sections describe changes and features in past releases.

Version 1.3

- Support added for the following:
 - K2 Solo Media Server
- Use the following documents with this release:
 - *SiteConfig User Manual* part number 071-8693-01. This manual is valid for SiteConfig version 1.2 (which is the version number displayed on the cover) as well as version 1.3.
 - *SiteConfig Migration Instructions* part number 071-8705-00

Version 1.2

- Support added for the following:
 - K2 Appliance
 - Aurora DSM
 - Aurora Edit PC and Edit LD
 - Media Frame Server and MDI Server, BaseCamp Express
 - IEP
 - Aurora Proxy Encoder
 - Aurora SmartBin Server, Conform Server, Aurora FTP Server
 - Aurora Ingest and Playout Servers and Client PCs
- Use the following documents with this release:
 - *SiteConfig User Manual* part number 071-8693-01
 - *SiteConfig Migration Instructions* part number 071-8705-00

NOTE: *Version 1.2 was previously named 1.1.0.433.*

Version 1.1.0.425

- Support added for the following:
 - K2 Media Server
 - K2 Summit Production Client (SAN and Standalone)
 - K2 Media Client (SAN and Standalone)
 - Control Point PC

Version compatibility

Versions qualified for compatibility with this release of software are summarized in the following sections.

Compatible Grass Valley platforms and software versions

This release of SiteConfig software supports network configuration capabilities on the following platforms and devices:

Device/platform	Comments
K2 Media Server	—
K2 Summit Production Client	SAN and Standalone
K2 Media Client	SAN and Standalone
K2 Solo Media Server	—
K2 Appliance	—
Control Point PC	—
Aurora DSM	—
Aurora Edit PC and Edit LD	—
Media Frame Server and MDI Server, BaseCamp Express	—
IEP	—
Aurora Proxy Encoder	—
Aurora SmartBin Server, Conform Server, Aurora FTP Server	—
Aurora Ingest and Playout Servers and Client PCs	—

This release of SiteConfig software supports software deployment of the following software installers using the appropriate version of the SiteConfig installer package cab file:

Software	Comments
K2 Server Software version 7.0.11.x and higher and 3.3.x and higher	—
K2 Summit SAN Client Software version 7.0.11.x and higher	—
K2 Summit Standalone Client Software version 7.0.11.x and higher	Use this file at version 7.1 and higher for K2 Solo Media Server
K2 Media Client SAN Client Software version 3.3.x and higher	—
K2 Media Client Standalone Software version 3.3.x and higher	—

Software	Comments
K2 Control Point Software version 7.0.11.x and higher and 3.3.x and higher	—
K2 Appliance Software version 7.0.11.x and 3.3.x and higher	—
StorNext File System software version 3.1.2.6138	—
SiteConfig Network Configuration Connect Kit 1.0.8 and higher.	This installer is now called SiteConfig Discovery Agent.
Aurora Suite 6.5.2.x and higher	—
Aurora NewsShare 6.5.2.x and higher	—
Aurora Conform Server 6.5.2.x and higher	—
MediaFrame Server 6.5.2.x and higher	—
Aurora Proxy Encoder 6.5.2.x and higher	—
Aurora Ingest 6.5.2.x and higher	—
Aurora Payout 6.5.2.x and higher	—
Generic iSCSI 7.0.11.x and higher and 3.3.x and higher	—
GVG MLib 7.0.11.x and higher and 3.3.x and higher	—

Do not use this version of SiteConfig software to manage network configuration of devices or software deployment of installers not mentioned in the lists above. The SiteConfig release notes in future versions of the software will specify additional devices and installers that can be managed by SiteConfig.

Compatible SiteConfig components

This release of SiteConfig software is compatible with the following components:

Component	Version	Comments
Discovery Agent	1.1	Lower versions are still compatible for device discovery. If you need an updated version to support configuration and software deployment features, the SiteConfig application prompts you to upgrade.

Component	Version	Comments
Grass Valley Prerequisite Files	1.0.0	The prerequisite files must be installed on the SiteConfig control point PC. Check your Grass Valley product release notes to determine if a later version is required.

Upgrading SiteConfig

This section contains the tasks necessary for the upgrade to this release of software.

About installing SiteConfig

SiteConfig uses a protocol that involves sending Ethernet broadcast messages to discover and configure devices. To enable this protocol to work correctly, there must be unrestricted network access between the control point PC and the devices to be discovered.

This is achieved if control network interfaces are all connected to the same switch or to multiple switches interconnected with ISLs/trunks. If your site requires that other switches and/or routers be in the network path, you must make sure that no restrictions are in place that block SiteConfig protocols.

Also, do not install SiteConfig on a PC on which a drive from a managed device is mapped as an administrative share (C\$). For example, if you have a PC set up to run anti-virus software and for this purpose you have network drives set up on the PC mapped to C\$ shares on devices, then do not use that PC as the SiteConfig control point PC that manages those devices.

System requirements for SiteConfig control point PC

The PC on which SiteConfig is installed must meet the following requirements:

Requirements	Comments
Operating system	Microsoft Windows (Must be a U.S. version): XP Professional Service Pack 2, Server 2003, or Vista Enterprise Service Pack 1.
RAM	Minimum 512 MB, 1 GB recommended
Graphics acceleration	Must have at least 128 MB memory
Processor	Pentium 4 or higher class, 2 GHz or greater
Hard disk space	400 MB
Microsoft .NET Framework	Version 2.0
Java JRE	1.3.1_12 and 1.4.2_05 or higher. Required for the HP Ethernet Switch configuration interface, which is used for K2 Storage Systems (shared storage).
XML	Microsoft XML 4 Service Pack 2 is required. You can install it from the msxml4sp2 file on the K2 System Software CD.

Installing/upgrading SiteConfig

Connect a PC with the appropriate system requirements to the LAN on which all the devices to be managed are connected. Take into consideration the requirement that there be no routed paths to the devices.

1. Procure SiteConfig installation files from the Grass Valley website or via other distribution mechanisms.

The following directory and files are required to install SiteConfig:

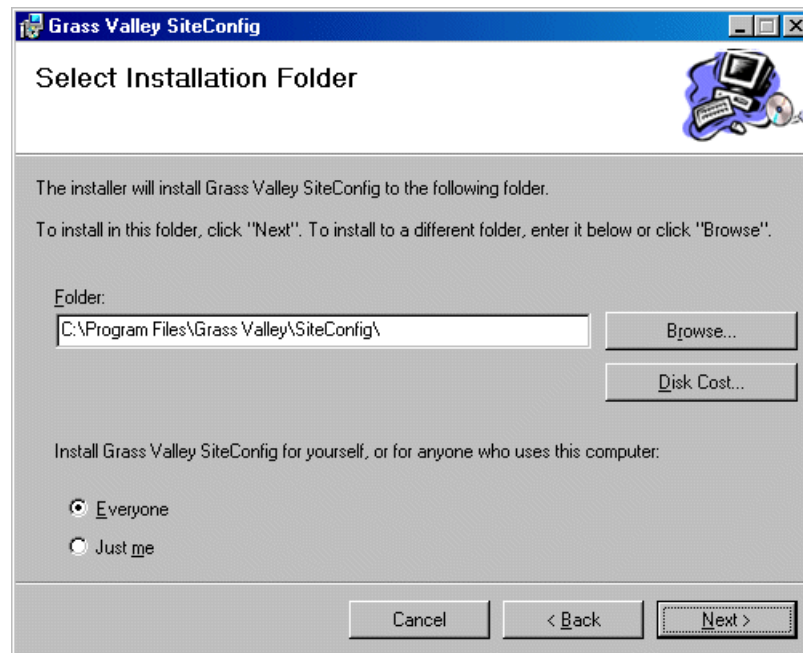
- *DotNetFx* directory
- *ProductFrameUISetup.msi*
- *setup.exe*

2. If you already have a version of SiteConfig installed, go to Windows **Add/Remove Programs** and uninstall it.

3. Double-click *setup.exe*.

The installation wizard opens.

4. Work through the wizard pages, clicking **Next** and **Finish**.



If the PC does not have the appropriate version of Microsoft .NET, the SiteConfig installation programs installs it.

5. Open the Windows operating system Services control panel on your Control Point PC and look for an entry called " ProductFrame Discovery Agent".

The Discovery Agent must be installed on the control point PC so that the control point PC can be discovered by SiteConfig and added to the system description as a managed device. This is necessary to ensure name resolution in SiteConfig's hosts file.

The Discovery Agent is also known as the Network Configuration Connect Kit. For example, in Windows Add/Remove Programs, it can be displayed as either Network Configuration Connect Kit or SiteConfig Discovery Agent.

6. Proceed as follows:
 - If the Discovery Agent is not installed, navigate to the SiteConfig install location's Discovery Agent Setup subdirectory and double-click the *DiscoveryAgentServiceSetup.msi* file. This launches the setup program and installs the Discovery Agent. Follow the setup wizard to complete installation. A restart is required after installation. Then continue with the next step in this procedure.
 - If the Discovery Agent is already installed, continue with the next step in this procedure.
7. If not already configured, configure the control point PC with a valid Ethernet IP address for the LAN using Windows Network Connections.
8. If you are not going to be using SiteConfig to manage system hosts files, put the system hosts file on the control point PC.

Install prerequisite files on the control point PC

Some software components, such as those for Aurora products, share common prerequisite software. You must install a prerequisite software package on the control point PC to make the prerequisite software available for software deployment to devices.

1. Check release notes for the required version of prerequisite files, if any.
2. On the SiteConfig control point PC, open Windows Add/Remove programs and look for **Grass Valley Prerequisite Files**, then proceed as follows:
 - If the required version of prerequisite files is installed, do not proceed with this task.
 - If prerequisite files are not installed or are not at the required version, proceed with this task.
3. Procure the required prerequisite software installation file. The file name is *Prerequisite Files.msi*.
4. On the SiteConfig control point PC, run the installation file. The installation program copies prerequisite files to *C:\Program Files\Grass Valley\Prerequisite Files*.

Upgrading the Discovery Agent

Do this task after installing or upgrading the SiteConfig application.

Prerequisites for this task are as follows:

- Your devices are in one or more deployment groups

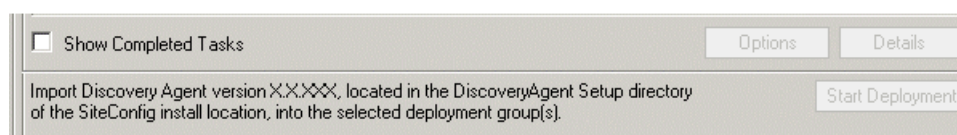
In this task you use the SiteConfig application to check the version of the Discovery Agent on your devices and upgrade the Discovery Agent if necessary.

1. In the **Software Deployment | Deployment Groups** tree view, right-click the top-most node for the group or any individual device and select **Check Software**.

NOTE: *If you have access problems, verify that the administrator account on the device has credentials as currently configured in SiteConfig. By default credentials on the device should be administrator/adminGV! for Aurora devices and Administrator/adminK2 for K2 devices.*

The Check Software dialog box appears. SiteConfig searches for software on the selected device or devices and gathers information. Progress is reported.

2. When the check is complete for the selected device or devices, close the Check Software dialog box.
3. Select a software deployment group and check the area next to the Start Deployment button for a message.



Proceed as follows:

- If there is no message instructing you to upgrade the Discovery Agent, the device or devices already have the compatible version of the Discovery Agent. Skip ahead to the last step of this procedure.
 - If a message instructs you to upgrade the Discovery Agent, make a note of the required Discovery Agent version number and continue with the next step in this procedure.
4. Click **Add Package**
 5. Click **Browse** in the add package dialog and browse to the Discovery Agent Setup folder under your SiteConfig install location on the SiteConfig PC.
 6. Select the required *DiscoveryAgent_<version>.cab* file and click **Open**.
SiteConfig generates deployment tasks to uninstall the existing version and installs the selected version and enables the **Start Deployment** button.
 7. Check the uninstall and install deploy tasks for the Discovery Agent and click the **Start Deployment** button when you are ready to deploy.
SiteConfig runs the deployment tasks.
 8. Repeat these steps for any other software deployment groups.

About the Discovery Agent

The SiteConfig Network Configuration Connect Kit, also known as the Discovery Agent, is a SiteConfig prerequisite that must be installed on all managed devices to allow for discovery and configuration by SiteConfig. Any version of the Discovery Agent supports discovery, so if the device has the Discovery Agent installed, it is not necessary to upgrade it before discovering the device with SiteConfig.

When you install the SiteConfig application on your control point PC, a subfolder called Discovery Agent Setup is created under your install folder that contains the Discovery Agent package. You are required to add and deploy this package to all your deployment groups to keep this software updated.

When you install a new version of SiteConfig, that version might come with an updated Discovery Agent package. If you plan to perform deployment operations on any deployment group and add a package that generates deployment tasks, SiteConfig displays text indicating that you are required to add the Discovery Agent package to the deployment group.

SiteConfig does this if it detects that there is no Discovery Agent in the deployment group or if there is a different version of the package in the group.

You must add the package to the group before the Start Deployment button will be enabled to allow you to run deployment tasks.

Known Problems

The following limitations are present in this release of software. If you wish to obtain more information about these limitations, please mention the reference numbers.

CR95410	Description:	SiteConfig sometimes displays an error message that says "An error was discovered processing a <security> header".
	Workaround:	Modify the clock time on the Control Point PC and all managed devices to have more or less the same UTC time. This error will only occur if the clock times in UTC are out of sync by more than 5 minutes.
CR107766	Description:	SiteConfig will install SNFS to C:\SNFS on all non K2 devices. This will result in the file system not being mounted after the upgrade if the install folder prior to the install was not C:\SNFS. The SNFS cab file is contained within the Generic iSCSI cab file.
	Workaround:	After installing SNFS, copy the fsnameservers file to C:\SNFS\config from the previous install location's config folder and reboot the device.
