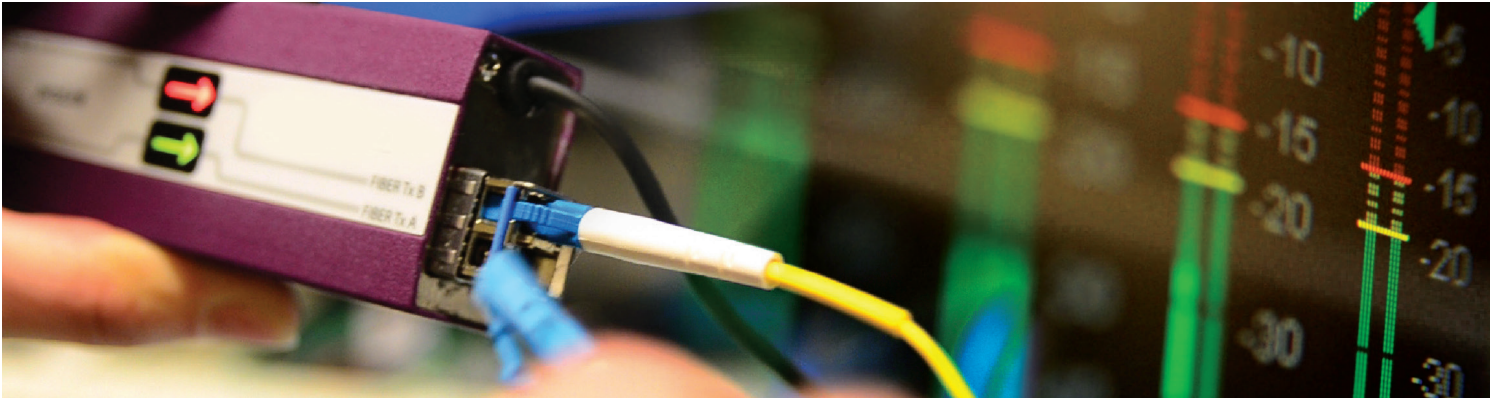


PicoLink Series ENC-291p

12-bit SDI to NTSC/PAL Encoder



Cost-efficient performance and versatility.

The ENC-291p from Grass Valley, a Belden Brand, is a miniature SDI to NTSC/PAL encoder, which features 12-bit superior quality processing.

It features automatic 525-line and 625-line SDI signal detection conforming to the SMPTE ST 259-C standard, and provides a NTSC, PAL, PAL-M or PAL-N composite output signal. It also includes a convenient built-in test pattern generator.

This unit is very simple to install and to operate, and it is the ideal solution for monitoring applications.

KEY FEATURES

- Superior quality 12-bit processing
- Automatic 525-line and 625-line format input detection
- NTSC or PAL-M composite output for 525-line input, and PAL or PAL-N composite output for 625-line input
- Y-only (monochrome) output selection
- Output setup selection: 7.5 or 0 IRE (NTSC)
- Built-in color bars generator
- Bi-color LED providing error status on input SDI signal
- Lightweight and very small extruded aluminum housing

SPECIFICATIONS

Input

Signal:

SMPTE ST 259-C (270 Mb/s)

Cable length: 200m (656 ft.) Belden 8281

Return loss: >15 dB up to 270 MHz

Connector: 75Ω BNC

Output

Signal:

NTSC (525/60)

PAL (625/50)

PAL-M (525/60)

PAL-N (625/50)

Connector: 75Ω BNC

Processing Performance

Quantization: 12 bits

Signal path: 10 bits

Sampling: 216 MHz (16x oversampling)

Freq. response: ±0.5 dB to 5 MHz

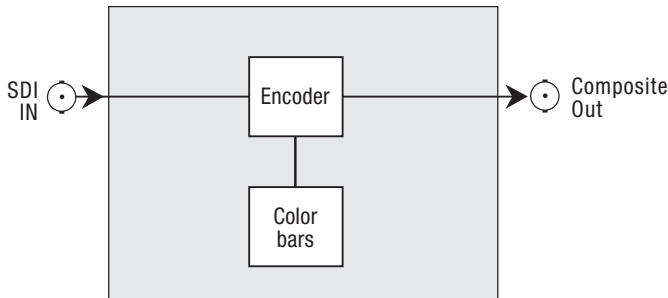
Test signal: 75% color bars with 100% white

Processing delay: 3.2 μs

Electrical

Voltage: 5 VDC

Power: 1.5W



ENC-291p functional block diagram

ORDERING

ENC-291p

12-bit SDI to NTSC/PAL encoder

Accessories

LKS-WSU

Power supply for 110V or 22V

pL-Tray

40W rack mounted tray for up to 10 picoLinks

pico-PA

12V to 5V power adapter